

# November 2018 FY 2018-2019 CYDC JDSAG SUPPLEMENTAL REPORT

---

Prepared by the Division of Youth Services (DYS)  
Data Management & Analysis  
December 28, 2018



**COLORADO**

**Office of Children,  
Youth & Families**

Division of Youth Services

# November 2018 CYDC Supplemental Report

## DYS Commitment ADP & New Commitments by Judicial District

Region	JD <sup>1</sup>	2019 Population Estimates <sup>2</sup>	ADP <sup>3</sup>		New Commitments		
			November 2018	YTD	November 2018	YTD	YTD Rate <sup>4</sup>
<i>Central Region</i>							
	1st	55,734	84.7	88.4	2	20	3.6
	2nd	56,489	83.9	88.8	5	20	3.5
	5th	9,445	6.6	5.9	0	2	2.1
	18th	117,328	95.0	90.9	2	19	1.6
<b>Central Total</b>		<b>238,996</b>	<b>270.3</b>	<b>274.0</b>	<b>9</b>	<b>61</b>	<b>2.6</b>
<i>Northeast Region</i>							
	8th	34,282	21.6	23.6	1	2	0.6
	13th	8,510	3.2	4.7	0	0	0.0
	17th	70,426	57.5	60.6	1	13	1.8
	19th	37,897	43.9	47.9	3	7	1.8
	20th	31,849	2.2	5.7	0	0	0.0
<b>Northeast Total</b>		<b>182,964</b>	<b>128.5</b>	<b>142.4</b>	<b>5</b>	<b>22</b>	<b>1.2</b>
<i>Southern Region</i>							
	3rd	1,805	0.0	0.0	0	0	0.0
	4th	81,988	88.7	96.7	5	21	2.6
	10th	18,298	16.6	16.8	0	1	0.5
	11th	7,228	5.8	5.2	1	1	1.4
	12th	5,295	2.0	2.2	0	0	0.0
	15th	2,106	5.0	6.2	0	1	4.7
	16th	2,796	0.0	0.4	0	0	0.0
<b>Southern Total</b>		<b>119,516</b>	<b>118.2</b>	<b>127.4</b>	<b>6</b>	<b>24</b>	<b>2.0</b>
<i>Western Region</i>							
	6th	7,337	4.0	4.0	0	1	1.4
	7th	10,703	9.7	9.5	1	2	1.9
	9th	8,691	5.6	5.9	1	1	1.2
	14th	5,745	2.0	2.4	0	1	1.7
	21st	16,228	34.7	34.2	0	12	7.4
	22nd	3,215	7.0	6.2	0	1	3.1
<b>Western Total</b>		<b>51,919</b>	<b>63.0</b>	<b>62.4</b>	<b>2</b>	<b>18</b>	<b>3.5</b>
<b>Statewide Total</b>		<b>593,395</b>	<b>580.0</b>	<b>606.2</b>	<b>22</b>	<b>125</b>	<b>2.1</b>

<sup>1</sup> JD represents the judicial district in which the client was committed. Regional totals are a sum of their respective judicial districts. Regional totals reported here may differ slightly from those reported in the Monthly Population Report, where region is defined by active caseloads.

<sup>2</sup> Source: DOLA 2019 Estimates.

<sup>3</sup> Due to rounding, totals shown may not be an exact sum of the subtotals.

<sup>4</sup> Per 10,000 youth in the population.

# November 2018 CYDC Supplemental Report

## DYS Detention ADP and New Detention Admissions by Judicial District

Region	JD	2019 Population Estimates <sup>1</sup>	ADP		New Admits		
			November 2018	YTD	November 2018	YTD	YTD New Admit Rate <sup>2</sup>
<i>Central Region</i>							
	1st	55,734	22.1	24.6	38	216	38.8
	2nd	56,489	38.0	42.4	74	360	63.7
	5th	9,445	1.4	1.0	4	17	18.0
	18th	117,328	47.5	45.8	70	374	31.9
<b>Central Total</b>		<b>238,996</b>	<b>109.0</b>	<b>113.9</b>	<b>186</b>	<b>967</b>	<b>40.5</b>
<i>Northeast Region</i>							
	8th	34,282	13.7	12.0	31	122	35.6
	13th	8,510	4.9	4.1	8	39	45.8
	17th	70,426	23.3	22.3	43	241	34.2
	19th	37,897	16.9	17.0	38	196	51.7
	20th	31,849	9.1	6.5	10	54	17.0
<b>Northeast Total</b>		<b>182,964</b>	<b>67.8</b>	<b>61.9</b>	<b>130</b>	<b>652</b>	<b>35.6</b>
<i>Southern Region</i>							
	3rd	1,805	2.2	1.8	1	9	49.9
	4th	81,988	45.6	46.3	62	295	36.0
	10th	18,298	7.6	6.4	19	79	43.2
	11th	7,228	3.7	2.7	8	41	56.7
	12th	5,295	2.2	1.1	7	26	49.1
	15th	2,106	0.3	1.3	0	8	38.0
	16th	2,796	0.6	0.8	1	3	10.7
<b>Southern Total</b>		<b>119,516</b>	<b>62.2</b>	<b>60.4</b>	<b>98</b>	<b>461</b>	<b>38.6</b>
<i>Western Region</i>							
	6th	7,337	1.6	1.5	5	17	23.2
	7th	10,703	4.3	3.1	7	32	29.9
	9th	8,691	1.7	2.0	0	12	13.8
	14th	5,745	0.0	0.5	0	2	3.5
	21st	16,228	13.8	12.7	21	109	67.2
	22nd	3,215	0.0	0.7	0	7	21.8
<b>Western Total</b>		<b>51,919</b>	<b>21.4</b>	<b>20.5</b>	<b>33</b>	<b>179</b>	<b>34.5</b>
<i>Missing JD or Multiple JDs</i>			4.3	2.4			
<b>Statewide Total</b>		<b>593,395</b>	<b>264.7</b>	<b>259.2</b>	<b>447</b>	<b>2,259</b>	<b>38.1</b>

<sup>1</sup> Source: DOLA 2019 Estimates.

<sup>2</sup> Per 10,000 youth in the population.

# November 2018 CYDC Supplemental Report

DYS Detention LOS by Judicial District				
Region	JD	YTD Detention Releases	YTD LOS (days)	LOS (days) Compared to State AVG
<i>Central Region</i>				
	1st	210	18.3	0.3
	2nd	357	16.0	-2.0
	5th	16	10.0	-8.0
	18th	391	17.2	-0.9
<b>Central Total</b>		<b>974</b>	<b>16.9</b>	<b>-1.2</b>
<i>Northeast Region</i>				
	8th	126	14.0	-4.0
	13th	38	15.0	-3.0
	17th	233	14.2	-3.8
	19th	186	12.0	-6.0
	20th	51	19.9	1.8
<b>Northeast Total</b>		<b>634</b>	<b>14.0</b>	<b>-4.0</b>
<i>Southern Region</i>				
	3rd	7	2.7	-15.3
	4th	300	26.8	8.8
	10th	74	7.7	-10.3
	11th	41	7.3	-10.7
	12th	26	7.0	-11.0
	15th	11	21.1	3.1
	16th	5	28.5	10.5
<b>Southern Total</b>		<b>464</b>	<b>20.4</b>	<b>2.4</b>
<i>Western Region</i>				
	6th	13	12.0	-6.0
	7th	30	11.8	-6.2
	9th	12	12.9	-5.1
	14th	2	40.3	22.2
	21st	104	14.1	-3.9
	22nd	9	14.6	-3.4
<b>Western Total</b>		<b>170</b>	<b>13.8</b>	<b>-4.2</b>
<b>Statewide Total</b>		<b>2,241</b>	<b>18.0</b>	<b>-</b>

## November 2018 CDYC Supplemental Report

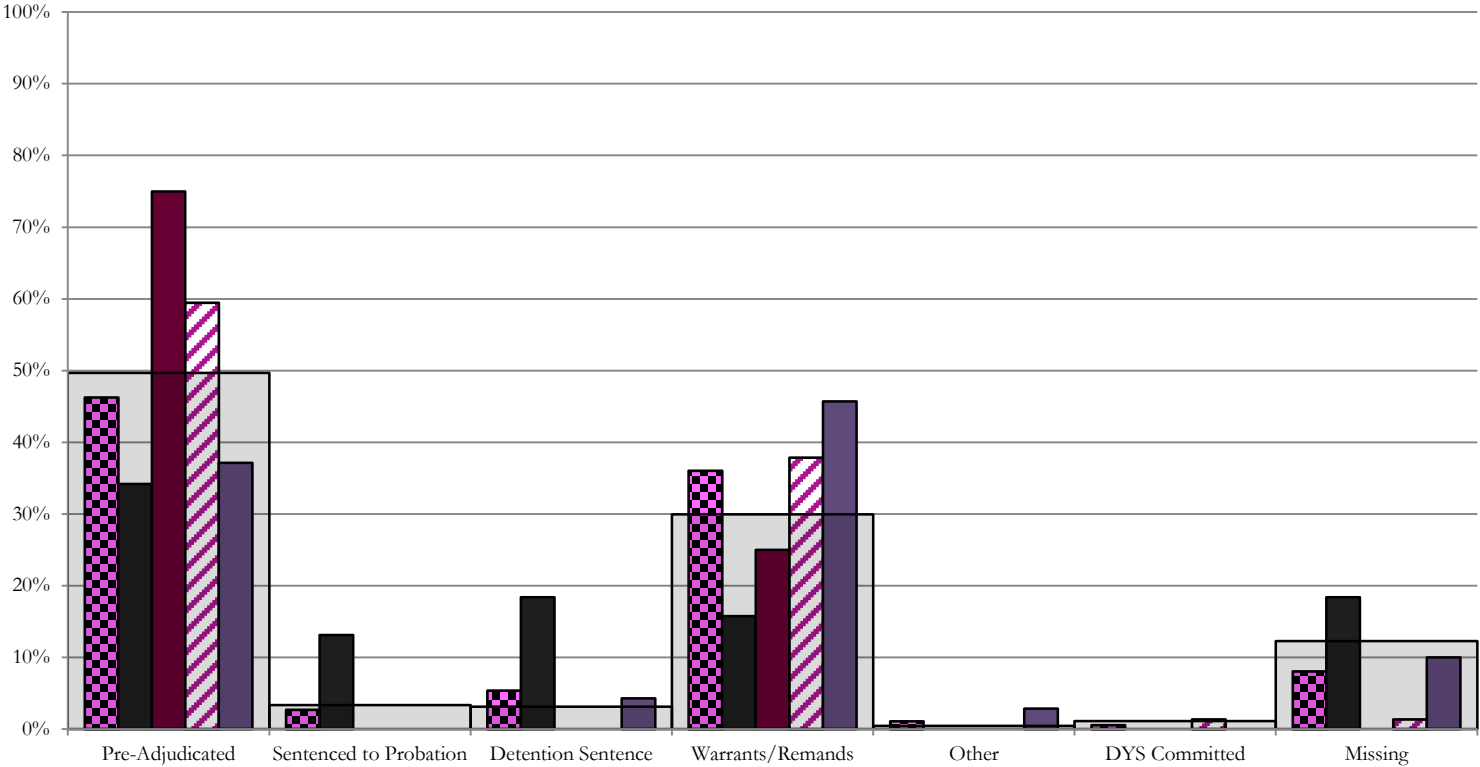
### CYDC Reason Detained (RD) by Judicial District

Region	JD	Monthly New Admits	Pre-Adjudicated				Sentenced to Probation				Detention Sentence								Warrants/Remands				Other				DYS Committed		Missing									
			Felony		Misdemeanor		Technical Violator		New Charges		Probation Sentence		Detention Sentence		Valid Court Order (VCO) Truancy		Awaiting DSS (Social Services) Placement		Failure to Appear (FTA)		Failure to Comply (FTC)		Interstate Compact on Juveniles (ICJ) Hold		Immigration Hold		No Bond Hold		Out-of-Country Warrant		Institutional		Parole		Missing			
			#	%	#	%	#	%	#	%	#	%	#	%	#	%	#	%	#	%	#	%	#	%	#	%	#	%	#	%	#	%	#	%	#	%		
<i>Central Region</i>																																						
	1st	38	11	28.9%	2	5.3%	5	13.2%	0	0.0%	0	0.0%	7	18.4%	0	0.0%	0	0.0%	1	2.6%	5	13.2%	0	0.0%	0	0.0%	0	0.0%	0	0.0%	0	0.0%	0	0.0%	0	0.0%	7	18.4%
	2nd	74	34	45.9%	10	13.5%	0	0.0%	0	0.0%	0	0.0%	0	0.0%	0	0.0%	9	12.2%	19	25.7%	0	0.0%	0	0.0%	0	0.0%	1	1.4%	0	0.0%	1	1.4%	0	0.0%	1	1.4%		
	5th	4	1	25.0%	2	50.0%	0	0.0%	0	0.0%	0	0.0%	0	0.0%	0	0.0%	0	0.0%	1	25.0%	0	0.0%	0	0.0%	0	0.0%	0	0.0%	0	0.0%	0	0.0%	0	0.0%	0	0.0%		
	18th	70	19	27.1%	7	10.0%	0	0.0%	0	0.0%	0	0.0%	3	4.3%	0	0.0%	0	0.0%	8	11.4%	24	34.3%	2	2.9%	0	0.0%	0	0.0%	0	0.0%	0	0.0%	0	0.0%	0	0.0%	7	10.0%
<b>Central Total</b>		<b>186</b>	<b>65</b>	<b>35%</b>	<b>21</b>	<b>11%</b>	<b>5</b>	<b>2.7%</b>	<b>0</b>	<b>0.0%</b>	<b>0</b>	<b>0.0%</b>	<b>10</b>	<b>5.4%</b>	<b>0</b>	<b>0.0%</b>	<b>0</b>	<b>0.0%</b>	<b>18</b>	<b>10%</b>	<b>49</b>	<b>26%</b>	<b>2</b>	<b>1.1%</b>	<b>0</b>	<b>0.0%</b>	<b>0</b>	<b>0.0%</b>	<b>0</b>	<b>0.0%</b>	<b>0</b>	<b>0.0%</b>	<b>1</b>	<b>0.5%</b>	<b>0</b>	<b>0.0%</b>	<b>15</b>	<b>8.1%</b>
<i>Northeast Region</i>																																						
	8th	31	9	29.0%	2	6.5%	0	0.0%	0	0.0%	0	0.0%	0	0.0%	0	0.0%	0	0.0%	1	3.2%	13	41.9%	0	0.0%	0	0.0%	0	0.0%	0	0.0%	0	0.0%	0	0.0%	0	0.0%	6	19.4%
	13th	8	3	37.5%	2	25.0%	0	0.0%	0	0.0%	0	0.0%	0	0.0%	0	0.0%	0	0.0%	0	0.0%	0	0.0%	0	0.0%	0	0.0%	0	0.0%	0	0.0%	0	0.0%	0	0.0%	3	37.5%		
	17th	43	12	27.9%	2	4.7%	0	0.0%	0	0.0%	0	0.0%	0	0.0%	0	0.0%	4	9.3%	9	20.9%	0	0.0%	0	0.0%	0	0.0%	0	0.0%	0	0.0%	0	0.0%	0	0.0%	0	0.0%	16	37.2%
	19th	38	11	28.9%	12	31.6%	5	13.2%	1	2.6%	0	0.0%	0	0.0%	0	0.0%	1	2.6%	4	10.5%	3	7.9%	0	0.0%	0	0.0%	0	0.0%	0	0.0%	0	0.0%	0	0.0%	0	0.0%	1	2.6%
	20th	10	2	20.0%	3	30.0%	2	20.0%	0	0.0%	0	0.0%	0	0.0%	0	0.0%	0	0.0%	0	0.0%	1	10.0%	0	0.0%	0	0.0%	0	0.0%	0	0.0%	0	0.0%	0	0.0%	0	0.0%	2	20.0%
<b>Northeast Total</b>		<b>130</b>	<b>37</b>	<b>28%</b>	<b>21</b>	<b>16%</b>	<b>7</b>	<b>5.4%</b>	<b>1</b>	<b>0.8%</b>	<b>0</b>	<b>0.0%</b>	<b>0</b>	<b>0.0%</b>	<b>0</b>	<b>0.0%</b>	<b>1</b>	<b>0.8%</b>	<b>9</b>	<b>6.9%</b>	<b>26</b>	<b>20%</b>	<b>0</b>	<b>0.0%</b>	<b>0</b>	<b>0.0%</b>	<b>0</b>	<b>0.0%</b>	<b>0</b>	<b>0.0%</b>	<b>0</b>	<b>0.0%</b>	<b>0</b>	<b>0.0%</b>	<b>0</b>	<b>0.0%</b>	<b>28</b>	<b>22%</b>
<i>Southern Region</i>																																						
	3rd	1	0	0.0%	0	0.0%	0	0.0%	0	0.0%	0	0.0%	0	0.0%	0	0.0%	0	0.0%	0	0.0%	0	0.0%	0	0.0%	0	0.0%	0	0.0%	0	0.0%	0	0.0%	0	0.0%	0	0.0%	1	100.0%
	4th	62	34	54.8%	8	12.9%	0	0.0%	0	0.0%	0	0.0%	0	0.0%	0	0.0%	5	8.1%	6	9.7%	0	0.0%	0	0.0%	0	0.0%	0	0.0%	3	4.8%	1	1.6%	5	8.1%	5	8.1%		
	10th	19	7	36.8%	2	10.5%	0	0.0%	0	0.0%	0	0.0%	2	10.5%	0	0.0%	0	0.0%	2	10.5%	5	26.3%	0	0.0%	0	0.0%	0	0.0%	0	0.0%	0	0.0%	0	0.0%	0	0.0%	1	5.3%
	11th	8	5	62.5%	0	0.0%	1	12.5%	0	0.0%	0	0.0%	0	0.0%	0	0.0%	1	12.5%	1	12.5%	0	0.0%	0	0.0%	0	0.0%	0	0.0%	0	0.0%	0	0.0%	0	0.0%	0	0.0%	0	0.0%
	12th	7	1	14.3%	3	42.9%	0	0.0%	0	0.0%	0	0.0%	0	0.0%	0	0.0%	0	0.0%	2	28.6%	0	0.0%	0	0.0%	0	0.0%	0	0.0%	0	0.0%	0	0.0%	0	0.0%	0	0.0%	1	14.3%
	15th	0	0	0.0%	0	0.0%	0	0.0%	0	0.0%	0	0.0%	0	0.0%	0	0.0%	0	0.0%	0	0.0%	0	0.0%	0	0.0%	0	0.0%	0	0.0%	0	0.0%	0	0.0%	0	0.0%	0	0.0%	0	0.0%
	16th	1	0	0.0%	0	0.0%	0	0.0%	0	0.0%	0	0.0%	1	100.0%	0	0.0%	0	0.0%	0	0.0%	0	0.0%	0	0.0%	0	0.0%	0	0.0%	0	0.0%	0	0.0%	0	0.0%	0	0.0%	0	0.0%
<b>Southern Total</b>		<b>98</b>	<b>47</b>	<b>48%</b>	<b>13</b>	<b>13%</b>	<b>1</b>	<b>1.0%</b>	<b>0</b>	<b>0.0%</b>	<b>0</b>	<b>0.0%</b>	<b>3</b>	<b>3.1%</b>	<b>0</b>	<b>0.0%</b>	<b>0</b>	<b>0.0%</b>	<b>10</b>	<b>10%</b>	<b>12</b>	<b>12%</b>	<b>0</b>	<b>0.0%</b>	<b>0</b>	<b>0.0%</b>	<b>0</b>	<b>0.0%</b>	<b>0</b>	<b>0.0%</b>	<b>0</b>	<b>0.0%</b>	<b>3</b>	<b>3.1%</b>	<b>1</b>	<b>1.0%</b>	<b>8</b>	<b>8%</b>
<i>Western Region</i>																																						
	6th	5	3	60.0%	0	0.0%	1	20.0%	0	0.0%	0	0.0%	0	0.0%	0	0.0%	0	0.0%	0	0.0%	0	0.0%	0	0.0%	0	0.0%	0	0.0%	0	0.0%	0	0.0%	0	0.0%	0	0.0%	1	20%
	7th	7	3	42.9%	1	14.3%	0	0.0%	0	0.0%	0	0.0%	0	0.0%	0	0.0%	0	0.0%	0	0.0%	1	14.3%	0	0.0%	0	0.0%	0	0.0%	0	0.0%	0	0.0%	0	0.0%	0	0.0%	2	29%
	9th	0	0	0.0%	0	0.0%	0	0.0%	0	0.0%	0	0.0%	0	0.0%	0	0.0%	0	0.0%	0	0.0%	0	0.0%	0	0.0%	0	0.0%	0	0.0%	0	0.0%	0	0.0%	0	0.0%	0	0.0%	0	0.0%
	14th	0	0	0.0%	0	0.0%	0	0.0%	0	0.0%	0	0.0%	0	0.0%	0	0.0%	0	0.0%	0	0.0%	0	0.0%	0	0.0%	0	0.0%	0	0.0%	0	0.0%	0	0.0%	0	0.0%	0	0.0%	0	0.0%
	21st	21	5	23.8%	6	28.6%	0	0.0%	0	0.0%	0	0.0%	0	0.0%	0	0.0%	0	0.0%	1	4.8%	8	38.1%	0	0.0%	0	0.0%	0	0.0%	0	0.0%	0	0.0%	0	0.0%	0	0.0%	1	5%
	22nd	0	0	0.0%	0	0.0%	0	0.0%	0	0.0%	0	0.0%	0	0.0%	0	0.0%	0	0.0%	0	0.0%	0	0.0%	0	0.0%	0	0.0%	0	0.0%	0	0.0%	0	0.0%	0	0.0%	0	0.0%	0	0.0%
<b>Western Total</b>		<b>33</b>	<b>11</b>	<b>33%</b>	<b>7</b>	<b>21.2%</b>	<b>1</b>	<b>3.0%</b>	<b>0</b>	<b>0.0%</b>	<b>0</b>	<b>0.0%</b>	<b>0</b>	<b>0.0%</b>	<b>0</b>	<b>0.0%</b>	<b>0</b>	<b>0.0%</b>	<b>1</b>	<b>3.0%</b>	<b>9</b>	<b>27%</b>	<b>0</b>	<b>0.0%</b>	<b>0</b>	<b>0.0%</b>	<b>0</b>	<b>0.0%</b>	<b>0</b>	<b>0.0%</b>	<b>0</b>	<b>0.0%</b>	<b>0</b>	<b>0.0%</b>	<b>0</b>	<b>0.0%</b>	<b>4</b>	<b>12%</b>
<b>Individual RD Totals</b>		<b>447</b>	<b>160</b>	<b>36%</b>	<b>62</b>	<b>14%</b>	<b>14</b>	<b>3.1%</b>	<b>1</b>	<b>0.2%</b>	<b>0</b>	<b>0.0%</b>	<b>13</b>	<b>2.9%</b>	<b>0</b>	<b>0.0%</b>	<b>1</b>	<b>0.2%</b>	<b>38</b>	<b>9%</b>	<b>96</b>	<b>21%</b>	<b>2</b>	<b>0.4%</b>	<b>0</b>	<b>0.0%</b>	<b>0</b>	<b>0.0%</b>	<b>0</b>	<b>0.0%</b>	<b>0</b>	<b>0.0%</b>	<b>4</b>	<b>0.9%</b>	<b>1</b>	<b>0.2%</b>	<b>55</b>	<b>12%</b>
<b>Statewide Totals</b>		<b>447</b>	<b>222</b>	<b>49.7%</b>	<b>15</b>	<b>3.4%</b>	<b>14</b>	<b>3.1%</b>	<b>1</b>	<b>0.2%</b>	<b>0</b>	<b>0.0%</b>	<b>13</b>	<b>2.9%</b>	<b>0</b>	<b>0.0%</b>	<b>1</b>	<b>0.2%</b>	<b>38</b>	<b>8.5%</b>	<b>96</b>	<b>21.5%</b>	<b>2</b>	<b>0.4%</b>	<b>0</b>	<b>0.0%</b>	<b>0</b>	<b>0.0%</b>	<b>0</b>	<b>0.0%</b>	<b>4</b>	<b>0.9%</b>	<b>1</b>	<b>0.2%</b>	<b>55</b>	<b>12.3%</b>		

# Central Region

## CYDC Reason Detained by Judicial District

### November 2018 New Admits

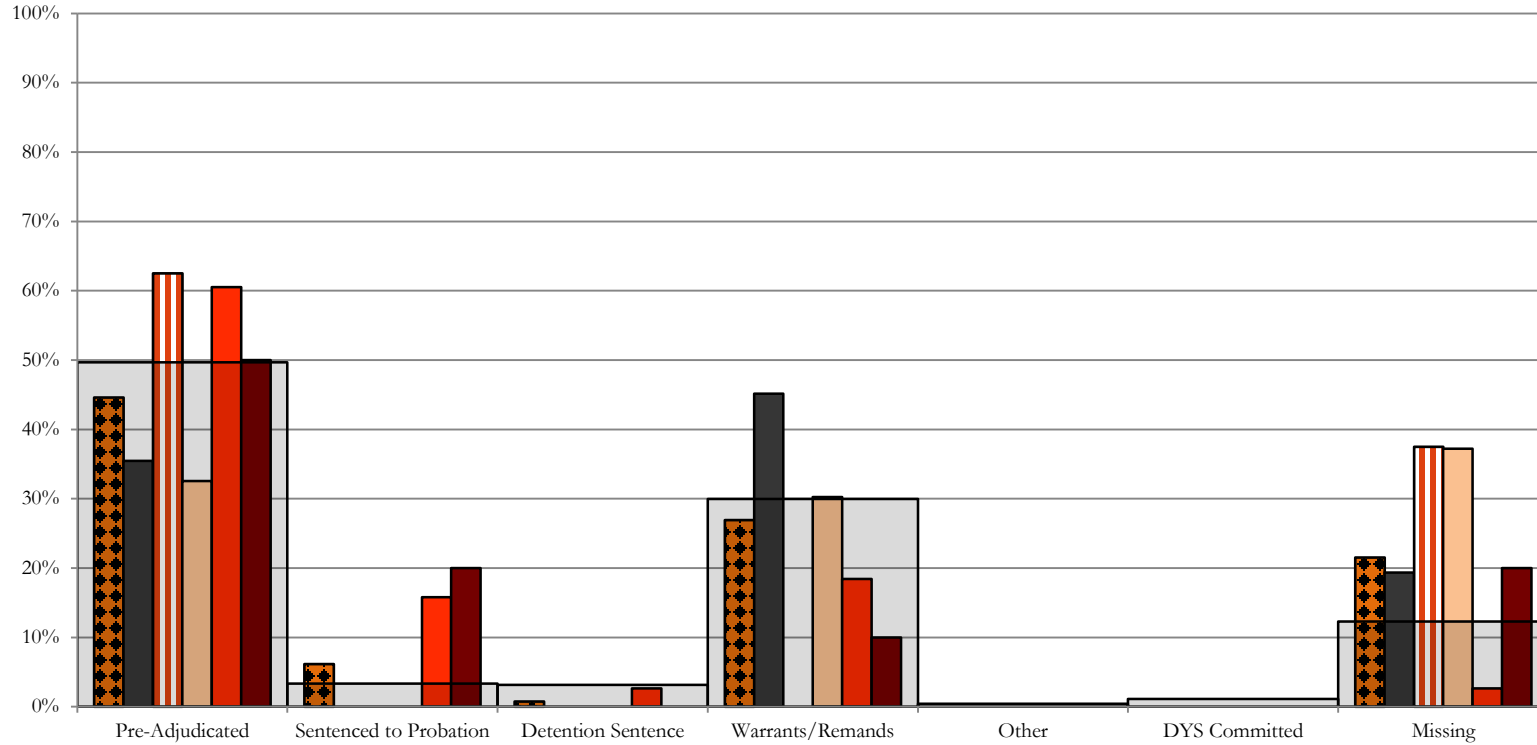


- CENTRAL REGION, 186 New Admits
- 1st JD, 38 New Admits
- 5th JD, 4 New Admits
- 2nd JD, 74 New Admits
- 18th JD, 70 New Admits
- STATEWIDE, 447 New Admits

# Northeast Region

## CYDC Reason Detained by Judicial District

### November 2018 New Admits



■ NORTHEAST REGION, 130 New Admits

■ 8th JD, 31 New Admits

■ 13th JD, 8 New Admits

■ 17th JD, 43 New Admits

■ 19th JD, 38 New Admits

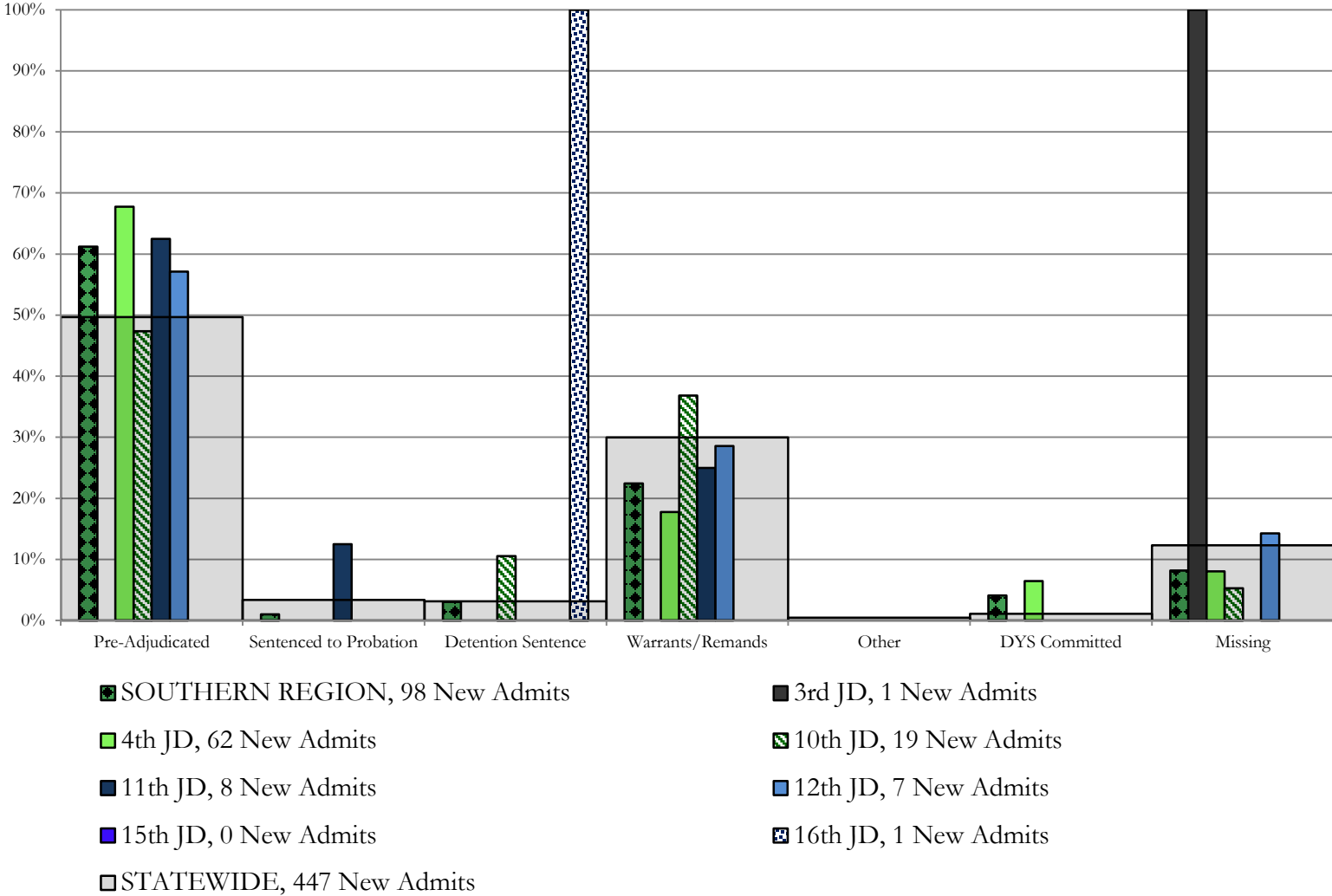
■ 20th JD, 10 New Admits

■ STATEWIDE, 447 New Admits

# Southern Region

## CYDC Reason Detained by Judicial District

### November 2018 New Admits

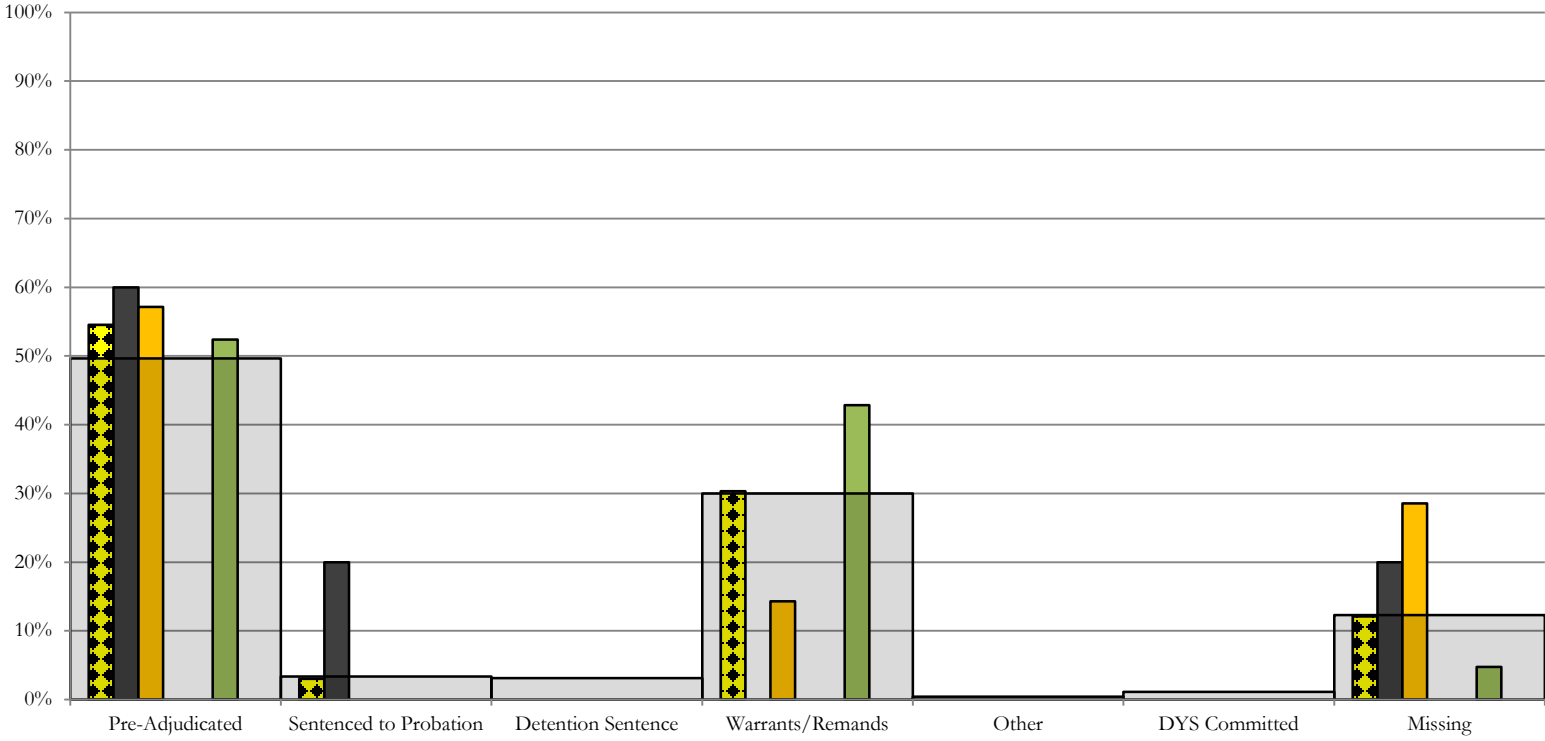




# Western Region

## CYDC Reason Detained by Judicial District

### November 2018 New Admits



- WESTERN REGION, 33 New Admits**
- 6th JD, 5 New Admits**
- 7th JD, 7 New Admits**
- 14th JD, 0 New Admits**
- 22nd JD, 0 New Admits**
- 9th JD, 0 New Admits**
- 21st JD, 21 New Admits**
- STATEWIDE, 447 New Admits**

# November 2018 CYDC Supplemental Report

## DYS Detention Maximum Youth Served by Judicial District<sup>1</sup>

Region	JD	Detention Capacity	Detention ADP		Maximum Youth Served on a Single Day <sup>2,3</sup>			
			November 2018	YTD	November 2018		YTD	
					Number of Youth	% of Detention Capacity	Number of Youth	% of Detention Capacity
<i>Central Region</i>								
	1st	37	22.1	24.6	30	81.1%	34	91.9%
	2nd	64	38.0	42.4	45	70.3%	59	92.2%
	5th	4	1.4	1.0	3	75.0%	3	75.0%
	18th	61	47.5	45.8	58	95.1%	58	95.1%
<b>Central Region</b>		<b>166</b>	<b>109.0</b>	<b>113.9</b>	<b>130</b>	<b>78.3%</b>	<b>134</b>	<b>80.7%</b>
<i>Northeast Region</i>								
	8th	21	13.7	12.0	20	95.2%	20	95.2%
	13th	5	4.9	4.1	6	120.0%	9	180.0%
	17th	30	23.3	22.3	30	100.0%	30	100.0%
	19th	25	16.9	17.0	22	88.0%	26	104.0%
	20th	13	9.1	6.5	12	92.3%	12	92.3%
<b>Northeast Region</b>		<b>94</b>	<b>67.8</b>	<b>61.9</b>	<b>81</b>	<b>86.2%</b>	<b>81</b>	<b>86.2%</b>
<i>Southern Region</i>								
	3rd	2	2.2	1.8	3	150.0%	4	200.0%
	4th	51	45.6	46.3	52	102.0%	52	102.0%
	10th	13	7.6	6.4	11	84.6%	11	84.6%
	11th	8	3.7	2.7	5	62.5%	6	75.0%
	12th	4	2.2	1.1	3	75.0%	3	75.0%
	15th	2	0.3	1.3	2	100.0%	4	200.0%
	16th	3	0.6	0.8	1	33.3%	3	100.0%
<b>Southern Region</b>		<b>83</b>	<b>62.2</b>	<b>60.4</b>	<b>71</b>	<b>85.5%</b>	<b>71</b>	<b>85.5%</b>
<i>Western Region</i>								
	6th	5	1.6	1.5	4	80.0%	4	80.0%
	7th	7	4.3	3.1	6	85.7%	6	85.7%
	9th	6	1.7	2.0	3	50.0%	6	100.0%
	14th	3	0.0	0.5	0	0.0%	2	66.7%
	21st	14	13.8	12.7	16	114.3%	17	121.4%
	22nd	4	0.0	0.7	0	0.0%	4	100.0%
<b>Western Region</b>		<b>39</b>	<b>21.4</b>	<b>20.5</b>	<b>26</b>	<b>66.7%</b>	<b>27</b>	<b>69.2%</b>
<i>Missing JD or Multiple JDs</i>			4.3	2.4				
<b>Statewide</b>		<b>382</b>	<b>264.7</b>	<b>259.2</b>	<b>291</b>	<b>76.2%</b>	<b>291</b>	<b>76.2%</b>

<sup>1</sup> Maximum youth served is the highest number of youth in detention on a single day during the month or fiscal year.

<sup>2</sup> Regional figures are not the sum of judicial districts, but represent the maximum count on one day for the entire region.

<sup>3</sup> State figures are not the sum of regional figures, but represent the maximum count on one day for the entire state.

## November 2018 CYDC Supplemental Report

### CYDC Community ADP by Judicial District

Region	JD	Committed		Diversion		ICJ		Municipal		Pre-Adjudicated		Sentenced		VCO		Total	
		November 2018	YTD	November 2018	YTD	November 2018	YTD	November 2018	YTD	November 2018	YTD	November 2018	YTD	November 2018	YTD	November 2018	YTD
<i>Central Region</i>																	
	1st	1.0	0.3	1.0	0.4	0.0	0.0	51.5	23.7	151.1	139.5	26.9	30.9	0.0	0.0	231.5	194.8
	2nd	0.0	0.0	0.0	0.0	1.0	0.5	0.0	0.0	161.3	132.6	22.0	16.4	0.0	0.0	184.4	149.5
	5th	0.0	0.0	23.0	24.8	0.0	0.0	0.0	0.0	9.3	7.0	31.5	33.0	0.0	0.0	63.8	64.8
	18th	0.9	0.6	0.0	0.0	0.0	0.1	0.0	0.0	257.4	243.2	22.6	27.0	0.0	0.0	280.9	270.8
<b>Central Total</b>		<b>1.9</b>	<b>0.9</b>	<b>24.0</b>	<b>25.2</b>	<b>1.0</b>	<b>0.5</b>	<b>51.5</b>	<b>23.7</b>	<b>579.1</b>	<b>522.3</b>	<b>103.1</b>	<b>107.3</b>	<b>0.0</b>	<b>0.0</b>	<b>760.6</b>	<b>679.9</b>
<i>Northeast Region</i>																	
	8th	0.0	0.0	1.0	3.1	0.0	0.0	0.0	0.0	50.2	39.7	30.8	22.2	0.0	0.0	82.0	64.9
	13th	0.0	0.0	0.0	0.0	0.0	0.0	1.2	1.8	25.3	24.0	3.7	2.4	3.0	3.0	33.3	31.2
	17th	1.0	0.3	0.0	0.0	0.0	0.0	0.0	0.0	250.4	232.8	83.7	73.8	0.0	0.0	335.1	306.9
	19th	0.2	0.3	1.0	3.3	0.0	0.0	0.0	0.0	63.5	58.1	24.4	26.2	0.9	0.7	90.0	88.7
	20th	3.0	2.7	7.0	6.9	0.0	0.0	0.0	0.0	93.3	79.8	34.0	29.1	11.0	8.2	148.3	126.8
<b>Northeast Total</b>		<b>4.2</b>	<b>3.3</b>	<b>9.0</b>	<b>13.3</b>	<b>0.0</b>	<b>0.0</b>	<b>1.2</b>	<b>1.8</b>	<b>482.7</b>	<b>434.4</b>	<b>176.6</b>	<b>153.7</b>	<b>14.9</b>	<b>11.9</b>	<b>688.7</b>	<b>618.5</b>
<i>Southern Region</i>																	
	3rd	0.0	0.0	0.0	0.0	0.0	0.0	0.0	0.0	11.0	8.9	6.0	5.8	0.0	0.0	17.0	14.7
	4th	2.8	1.6	0.0	0.0	0.0	0.0	19.8	27.3	145.1	120.2	40.7	38.4	0.1	0.0	208.5	187.4
	10th	1.0	1.0	0.0	0.0	1.0	1.0	2.0	2.0	19.0	21.4	8.9	7.9	0.0	0.0	31.8	33.3
	11th	1.0	1.0	0.0	0.0	0.0	0.0	21.0	13.6	31.3	24.0	24.0	22.6	0.0	0.0	77.3	61.2
	12th	0.0	0.0	1.0	1.0	0.0	0.0	4.0	2.8	15.2	10.9	0.0	0.0	0.0	0.0	20.2	14.8
	15th	0.0	0.0	1.0	1.8	0.0	0.0	0.0	0.0	4.0	2.4	5.0	5.4	0.0	0.0	10.0	9.6
	16th	0.0	0.0	0.0	0.0	0.0	0.0	0.0	0.0	5.9	9.1	3.0	2.7	14.4	15.4	23.3	27.2
<b>Southern Total</b>		<b>4.8</b>	<b>3.6</b>	<b>2.0</b>	<b>2.8</b>	<b>1.0</b>	<b>1.0</b>	<b>46.8</b>	<b>45.7</b>	<b>231.4</b>	<b>196.9</b>	<b>87.6</b>	<b>82.8</b>	<b>14.5</b>	<b>15.4</b>	<b>388.1</b>	<b>348.3</b>
<i>Western Region</i>																	
	6th	0.0	0.0	0.0	0.0	0.0	0.0	0.0	0.0	7.6	5.0	0.1	0.0	0.0	0.0	7.6	5.0
	7th	0.0	0.0	4.7	3.0	0.0	0.0	0.0	0.7	9.8	11.0	15.0	14.7	0.0	0.0	29.5	29.4
	9th	0.0	0.0	0.6	0.9	0.0	0.0	1.8	3.5	6.6	8.2	1.7	2.3	0.0	0.0	10.6	14.9
	14th	0.0	0.0	2.0	1.3	0.0	0.0	1.0	1.2	3.2	4.5	2.0	2.1	0.0	0.0	8.2	9.1
	21st	0.0	0.0	0.0	0.0	0.0	0.0	0.0	0.0	55.9	50.0	14.2	12.0	0.0	0.0	70.1	62.0
	22nd	0.0	0.0	0.0	0.0	0.0	0.0	0.0	0.0	8.3	6.5	2.0	2.1	0.0	0.0	10.3	8.7
<b>Western Total</b>		<b>0.0</b>	<b>0.0</b>	<b>7.2</b>	<b>5.2</b>	<b>0.0</b>	<b>0.0</b>	<b>2.8</b>	<b>5.4</b>	<b>91.3</b>	<b>85.2</b>	<b>35.0</b>	<b>33.2</b>	<b>0.0</b>	<b>0.0</b>	<b>136.3</b>	<b>129.1</b>
<b>Statewide Total</b>		<b>10.9</b>	<b>7.8</b>	<b>42.3</b>	<b>46.6</b>	<b>2.0</b>	<b>1.5</b>	<b>102.4</b>	<b>76.6</b>	<b>1384.6</b>	<b>1238.9</b>	<b>402.3</b>	<b>377.1</b>	<b>29.4</b>	<b>27.3</b>	<b>1973.8</b>	<b>1775.7</b>