

# October 2018 FY 2018-2019 CYDC JDSAG SUPPLEMENTAL REPORT

---

Prepared by the Division of Youth Services (DYS)  
Data Management & Analysis  
December 1, 2018



**COLORADO**

**Office of Children,  
Youth & Families**

Division of Youth Services

# October 2018 CYDC Supplemental Report

## DYS Commitment ADP & New Commitments by Judicial District

Region	JD <sup>1</sup>	2019 Population Estimates <sup>2</sup>	ADP <sup>3</sup>		New Commitments		
			October 2018	YTD	October 2018	YTD	YTD Rate <sup>4</sup>
<i>Central Region</i>							
	1st	55,734	85.6	89.3	4	18	3.2
	2nd	56,489	86.9	90.0	4	15	2.7
	5th	9,445	6.0	5.7	0	1	1.1
	18th	117,328	89.3	89.9	4	15	1.3
<b>Central Total</b>		<b>238,996</b>	<b>267.8</b>	<b>275.0</b>	<b>12</b>	<b>49</b>	<b>2.1</b>
<i>Northeast Region</i>							
	8th	34,282	20.4	24.0	0	0	0.0
	13th	8,510	4.4	5.1	0	0	0.0
	17th	70,426	62.5	62.0	4	11	1.6
	19th	37,897	45.8	49.4	0	3	0.8
	20th	31,849	4.2	6.5	0	0	0.0
<b>Northeast Total</b>		<b>182,964</b>	<b>137.4</b>	<b>147.0</b>	<b>4</b>	<b>14</b>	<b>0.8</b>
<i>Southern Region</i>							
	3rd	1,805	0.0	0.0	0	0	0.0
	4th	81,988	92.3	98.6	2	16	2.0
	10th	18,298	15.6	16.8	0	1	0.5
	11th	7,228	5.0	5.0	0	0	0.0
	12th	5,295	2.0	2.2	0	0	0.0
	15th	2,106	5.3	6.5	0	1	4.7
	16th	2,796	0.0	0.5	0	0	0.0
<b>Southern Total</b>		<b>119,516</b>	<b>120.1</b>	<b>129.6</b>	<b>2</b>	<b>18</b>	<b>1.5</b>
<i>Western Region</i>							
	6th	7,337	4.0	4.1	0	1	1.4
	7th	10,703	9.2	9.5	1	1	0.9
	9th	8,691	5.6	6.0	0	0	0.0
	14th	5,745	2.0	2.5	0	1	1.7
	21st	16,228	35.9	34.1	2	12	7.4
	22nd	3,215	7.0	6.1	0	1	3.1
<b>Western Total</b>		<b>51,919</b>	<b>63.8</b>	<b>62.2</b>	<b>3</b>	<b>16</b>	<b>3.1</b>
<b>Statewide Total</b>		<b>593,395</b>	<b>589.1</b>	<b>613.8</b>	<b>21</b>	<b>97</b>	<b>1.6</b>

<sup>1</sup> JD represents the judicial district in which the client was committed. Regional totals are a sum of their respective judicial districts. Regional totals reported here may differ slightly from those reported in the Monthly Population Report, where region is defined by active caseloads.

<sup>2</sup> Source: DOLA 2019 Estimates.

<sup>3</sup> Due to rounding, totals shown may not be an exact sum of the subtotals.

<sup>4</sup> Per 10,000 youth in the population.

# October 2018 CYDC Supplemental Report

## DYS Detention ADP and New Detention Admissions by Judicial District

Region	JD	2019 Population Estimates <sup>1</sup>	ADP		New Admits		YTD New Admit Rate <sup>2</sup>
			October 2018	YTD	October 2018	YTD	
<i>Central Region</i>							
	1st	55,734	27.1	25.1	41	177	31.8
	2nd	56,489	47.5	43.5	70	286	50.6
	5th	9,445	1.0	0.9	6	13	13.8
	18th	117,328	45.8	45.4	78	302	25.7
<b>Central Total</b>		<b>238,996</b>	<b>121.4</b>	<b>114.9</b>	<b>195</b>	<b>778</b>	<b>32.6</b>
<i>Northeast Region</i>							
	8th	34,282	11.5	11.6	27	91	26.5
	13th	8,510	4.2	3.9	6	31	36.4
	17th	70,426	22.6	22.1	42	198	28.1
	19th	37,897	19.9	17.5	42	157	41.4
	20th	31,849	7.3	5.9	11	44	13.8
<b>Northeast Total</b>		<b>182,964</b>	<b>65.6</b>	<b>60.9</b>	<b>128</b>	<b>521</b>	<b>28.5</b>
<i>Southern Region</i>							
	3rd	1,805	2.5	1.6	3	8	44.3
	4th	81,988	46.1	46.4	60	233	28.4
	10th	18,298	7.1	6.1	16	60	32.8
	11th	7,228	1.9	2.5	5	33	45.7
	12th	5,295	1.1	0.9	7	19	35.9
	15th	2,106	1.5	1.6	1	8	38.0
	16th	2,796	0.8	0.8	0	2	7.2
<b>Southern Total</b>		<b>119,516</b>	<b>61.1</b>	<b>60.0</b>	<b>92</b>	<b>363</b>	<b>30.4</b>
<i>Western Region</i>							
	6th	7,337	1.6	1.5	2	12	16.4
	7th	10,703	3.7	2.8	7	25	23.4
	9th	8,691	3.5	2.0	6	12	13.8
	14th	5,745	0.9	0.7	0	2	3.5
	21st	16,228	10.8	12.4	24	88	54.2
	22nd	3,215	0.1	0.9	0	7	21.8
<b>Western Total</b>		<b>51,919</b>	<b>20.7</b>	<b>20.3</b>	<b>39</b>	<b>146</b>	<b>28.1</b>
<i>Missing JD or Multiple JDs</i>			2.9	1.3			
<b>Statewide Total</b>		<b>593,395</b>	<b>271.8</b>	<b>257.4</b>	<b>454</b>	<b>1,808</b>	<b>30.5</b>

<sup>1</sup> Source: DOLA 2019 Estimates.

<sup>2</sup> Per 10,000 youth in the population.

# October 2018 CYDC Supplemental Report

DYS Detention LOS by Judicial District				
Region	JD	YTD Detention Releases	YTD LOS (days)	LOS (days) Compared to State AVG
<i>Central Region</i>				
	1st	163	17.9	0.0
	2nd	280	16.2	-1.6
	5th	14	9.8	-8.0
	18th	308	15.8	-2.0
<b>Central Total</b>		<b>765</b>	<b>16.3</b>	<b>-1.5</b>
<i>Northeast Region</i>				
	8th	100	14.8	-3.0
	13th	31	15.1	-2.8
	17th	192	14.3	-3.5
	19th	150	11.9	-5.9
	20th	41	21.3	3.4
<b>Northeast Total</b>		<b>514</b>	<b>14.3</b>	<b>-3.5</b>
<i>Southern Region</i>				
	3rd	7	2.7	-15.1
	4th	237	27.6	9.8
	10th	54	7.6	-10.2
	11th	35	7.4	-10.4
	12th	19	6.1	-11.7
	15th	9	19.3	1.5
	16th	5	28.6	10.7
<b>Southern Total</b>		<b>366</b>	<b>21.0</b>	<b>3.1</b>
<i>Western Region</i>				
	6th	11	14.1	-3.7
	7th	22	11.3	-6.5
	9th	11	13.4	-4.5
	14th	2	40.3	22.5
	21st	83	14.7	-3.1
	22nd	9	14.6	-3.2
<b>Western Total</b>		<b>138</b>	<b>14.4</b>	<b>-3.4</b>
<b>Statewide Total</b>		<b>1,781</b>	<b>17.8</b>	<b>-</b>

## October 2018 CDYC Supplemental Report

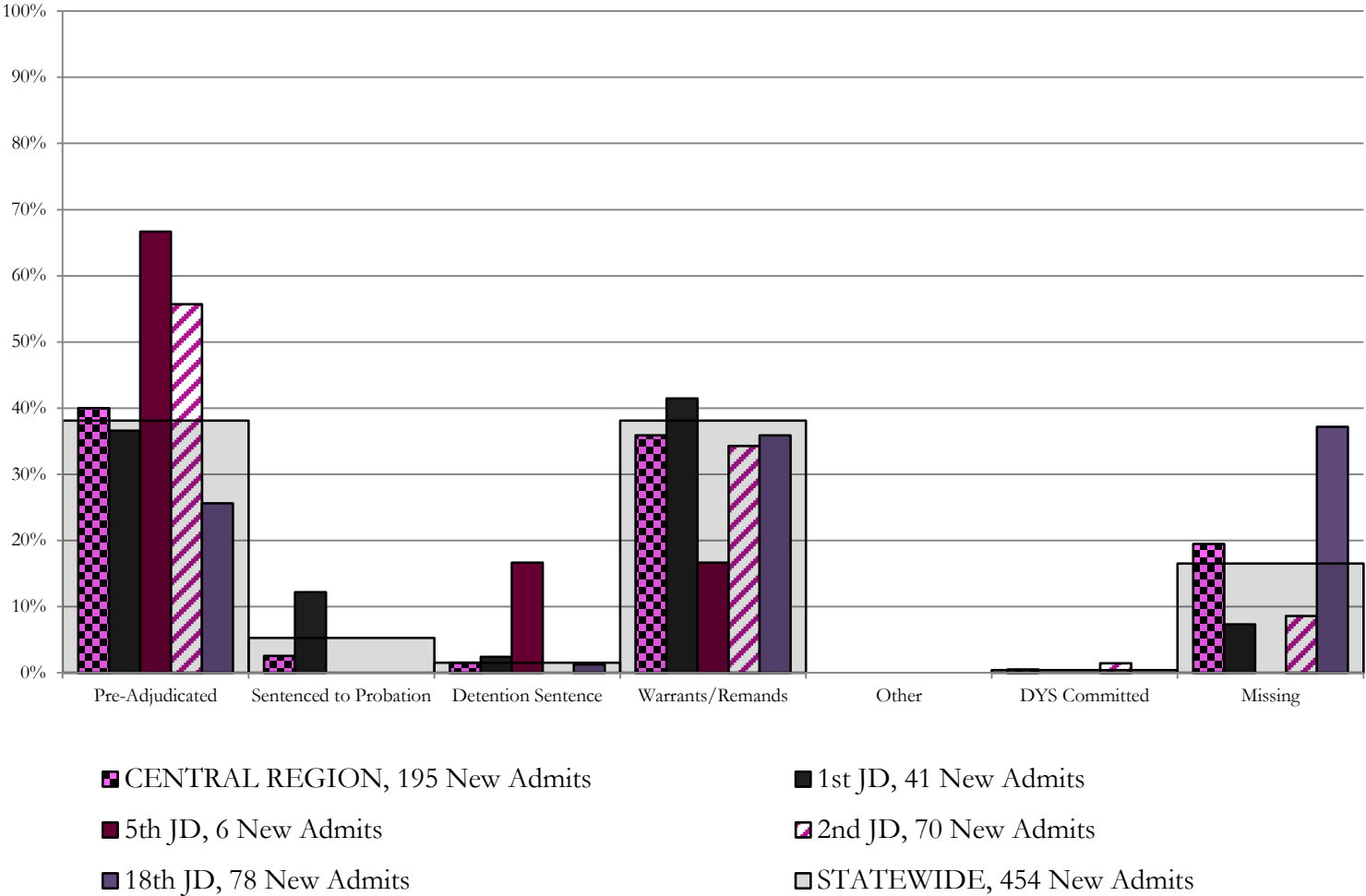
### CYDC Reason Detained (RD) by Judicial District

Region	JD	Monthly New Admits	Pre-Adjudicated				Sentenced to Probation				Detention Sentence								Warrants/Remands				Other				DYS Committed		Missing											
			Felony		Misdemeanor		Technical Violator		New Charges		Probation Sentence		Detention Sentence		Valid Court Order (VCO) Truancy		Awaiting DSS (Social Services) Placement		Failure to Appear (FTA)		Failure to Comply (FTC)		Interstate Compact on Juveniles (ICJ) Hold		Immigration Hold		No Bond Hold		Out-of-Country Warrant		Institutional		Parole		Missing					
			#	%	#	%	#	%	#	%	#	%	#	%	#	%	#	%	#	%	#	%	#	%	#	%	#	%	#	%	#	%	#	%	#	%				
<b>Central Region</b>																																								
	1st	41	12	29.3%	3	7.3%	5	12.2%	0	0.0%	0	0.0%	1	2.4%	0	0.0%	0	0.0%	0	0.0%	3	7.3%	14	34.1%	0	0.0%	0	0.0%	0	0.0%	0	0.0%	0	0.0%	0	0.0%	0	0.0%	3	7.3%
	2nd	70	34	48.6%	5	7.1%	0	0.0%	0	0.0%	0	0.0%	0	0.0%	0	0.0%	0	0.0%	7	10.0%	17	24.3%	0	0.0%	0	0.0%	0	0.0%	0	0.0%	1	1.4%	0	0.0%	6	8.6%	6	8.6%		
	5th	6	3	50.0%	1	16.7%	0	0.0%	0	0.0%	0	0.0%	1	16.7%	0	0.0%	0	0.0%	0	0.0%	1	16.7%	0	0.0%	0	0.0%	0	0.0%	0	0.0%	0	0.0%	0	0.0%	0	0.0%	0	0.0%	0	0.0%
	18th	78	10	12.8%	10	12.8%	0	0.0%	0	0.0%	0	0.0%	1	1.3%	0	0.0%	0	0.0%	6	7.7%	22	28.2%	0	0.0%	0	0.0%	0	0.0%	0	0.0%	0	0.0%	0	0.0%	0	0.0%	0	0.0%	29	37.2%
<b>Central Total</b>		<b>195</b>	<b>59</b>	<b>30%</b>	<b>19</b>	<b>10%</b>	<b>5</b>	<b>2.6%</b>	<b>0</b>	<b>0.0%</b>	<b>0</b>	<b>0.0%</b>	<b>3</b>	<b>1.5%</b>	<b>0</b>	<b>0.0%</b>	<b>0</b>	<b>0.0%</b>	<b>16</b>	<b>8%</b>	<b>54</b>	<b>28%</b>	<b>0</b>	<b>0.0%</b>	<b>0</b>	<b>0.0%</b>	<b>0</b>	<b>0.0%</b>	<b>0</b>	<b>0.0%</b>	<b>0</b>	<b>0.0%</b>	<b>1</b>	<b>0.5%</b>	<b>0</b>	<b>0.0%</b>	<b>38</b>	<b>19.5%</b>		
<b>Northeast Region</b>																																								
	8th	27	2	7.4%	5	18.5%	0	0.0%	0	0.0%	0	0.0%	1	3.7%	0	0.0%	0	0.0%	2	7.4%	16	59.3%	0	0.0%	0	0.0%	0	0.0%	0	0.0%	0	0.0%	0	0.0%	0	0.0%	0	0.0%	1	3.7%
	13th	6	4	66.7%	1	16.7%	0	0.0%	0	0.0%	0	0.0%	0	0.0%	0	0.0%	0	0.0%	0	0.0%	0	0.0%	0	0.0%	0	0.0%	0	0.0%	0	0.0%	0	0.0%	0	0.0%	0	0.0%	1	16.7%		
	17th	42	8	19.0%	2	4.8%	1	2.4%	0	0.0%	0	0.0%	0	0.0%	0	0.0%	0	0.0%	3	7.1%	17	40.5%	0	0.0%	0	0.0%	0	0.0%	0	0.0%	0	0.0%	0	0.0%	0	0.0%	0	0.0%	11	26.2%
	19th	42	13	31.0%	7	16.7%	13	31.0%	0	0.0%	0	0.0%	0	0.0%	0	0.0%	0	0.0%	0	0.0%	9	21.4%	0	0.0%	0	0.0%	0	0.0%	0	0.0%	0	0.0%	0	0.0%	0	0.0%	0	0.0%	0	0.0%
	20th	11	0	0.0%	0	0.0%	0	0.0%	0	0.0%	0	0.0%	0	0.0%	0	0.0%	0	0.0%	0	0.0%	0	0.0%	0	0.0%	0	0.0%	0	0.0%	0	0.0%	0	0.0%	0	0.0%	0	0.0%	0	0.0%	11	100.0%
<b>Northeast Total</b>		<b>128</b>	<b>27</b>	<b>21%</b>	<b>15</b>	<b>12%</b>	<b>14</b>	<b>10.9%</b>	<b>0</b>	<b>0.0%</b>	<b>0</b>	<b>0.0%</b>	<b>1</b>	<b>0.8%</b>	<b>0</b>	<b>0.0%</b>	<b>0</b>	<b>0.0%</b>	<b>5</b>	<b>3.9%</b>	<b>42</b>	<b>33%</b>	<b>0</b>	<b>0.0%</b>	<b>0</b>	<b>0.0%</b>	<b>0</b>	<b>0.0%</b>	<b>0</b>	<b>0.0%</b>	<b>0</b>	<b>0.0%</b>	<b>0</b>	<b>0.0%</b>	<b>0</b>	<b>0.0%</b>	<b>24</b>	<b>19%</b>		
<b>Southern Region</b>																																								
	3rd	3	2	66.7%	0	0.0%	1	33.3%	0	0.0%	0	0.0%	0	0.0%	0	0.0%	0	0.0%	0	0.0%	0	0.0%	0	0.0%	0	0.0%	0	0.0%	0	0.0%	0	0.0%	0	0.0%	0	0.0%	0	0.0%	0	0.0%
	4th	60	26	43.3%	2	3.3%	0	0.0%	3	5.0%	0	0.0%	1	1.7%	0	0.0%	0	0.0%	6	10.0%	18	30.0%	0	0.0%	0	0.0%	0	0.0%	0	0.0%	1	1.7%	0	0.0%	3	5.0%	3	5.0%		
	10th	16	5	31.3%	2	12.5%	0	0.0%	0	0.0%	0	0.0%	1	6.3%	0	0.0%	0	0.0%	2	12.5%	5	31.3%	0	0.0%	0	0.0%	0	0.0%	0	0.0%	0	0.0%	0	0.0%	0	0.0%	1	6.3%	1	6.3%
	11th	5	1	20.0%	1	20.0%	0	0.0%	0	0.0%	0	0.0%	0	0.0%	0	0.0%	0	0.0%	1	20.0%	1	20.0%	0	0.0%	0	0.0%	0	0.0%	0	0.0%	0	0.0%	0	0.0%	0	0.0%	0	0.0%	1	20.0%
	12th	7	3	42.9%	1	14.3%	0	0.0%	0	0.0%	0	0.0%	1	14.3%	0	0.0%	0	0.0%	2	28.6%	0	0.0%	0	0.0%	0	0.0%	0	0.0%	0	0.0%	0	0.0%	0	0.0%	0	0.0%	0	0.0%	0	0.0%
	15th	1	0	0.0%	0	0.0%	0	0.0%	0	0.0%	0	0.0%	0	0.0%	0	0.0%	0	0.0%	0	0.0%	1	100.0%	0	0.0%	0	0.0%	0	0.0%	0	0.0%	0	0.0%	0	0.0%	0	0.0%	0	0.0%	0	0.0%
	16th	0	0	0.0%	0	0.0%	0	0.0%	0	0.0%	0	0.0%	0	0.0%	0	0.0%	0	0.0%	0	0.0%	0	0.0%	0	0.0%	0	0.0%	0	0.0%	0	0.0%	0	0.0%	0	0.0%	0	0.0%	0	0.0%	0	0.0%
<b>Southern Total</b>		<b>92</b>	<b>37</b>	<b>40%</b>	<b>6</b>	<b>7%</b>	<b>1</b>	<b>1.1%</b>	<b>3</b>	<b>3.3%</b>	<b>0</b>	<b>0.0%</b>	<b>3</b>	<b>3.3%</b>	<b>0</b>	<b>0.0%</b>	<b>0</b>	<b>0.0%</b>	<b>11</b>	<b>12%</b>	<b>25</b>	<b>27%</b>	<b>0</b>	<b>0.0%</b>	<b>0</b>	<b>0.0%</b>	<b>0</b>	<b>0.0%</b>	<b>0</b>	<b>0.0%</b>	<b>0</b>	<b>0.0%</b>	<b>1</b>	<b>1.1%</b>	<b>0</b>	<b>0.0%</b>	<b>5</b>	<b>5%</b>		
<b>Western Region</b>																																								
	6th	2	0	0.0%	0	0.0%	0	0.0%	0	0.0%	0	0.0%	0	0.0%	0	0.0%	0	0.0%	0	0.0%	0	0.0%	0	0.0%	0	0.0%	0	0.0%	0	0.0%	0	0.0%	0	0.0%	0	0.0%	2	100%		
	7th	7	3	42.9%	0	0.0%	0	0.0%	0	0.0%	0	0.0%	0	0.0%	0	0.0%	0	0.0%	2	28.6%	0	0.0%	0	0.0%	0	0.0%	0	0.0%	0	0.0%	0	0.0%	0	0.0%	0	0.0%	2	29%		
	9th	6	1	16.7%	0	0.0%	1	16.7%	0	0.0%	0	0.0%	0	0.0%	0	0.0%	0	0.0%	2	33.3%	0	0.0%	0	0.0%	0	0.0%	0	0.0%	0	0.0%	0	0.0%	0	0.0%	0	0.0%	2	33%		
	14th	0	0	0.0%	0	0.0%	0	0.0%	0	0.0%	0	0.0%	0	0.0%	0	0.0%	0	0.0%	0	0.0%	0	0.0%	0	0.0%	0	0.0%	0	0.0%	0	0.0%	0	0.0%	0	0.0%	0	0.0%	0	0.0%	0	0%
	21st	24	4	16.7%	2	8.3%	0	0.0%	0	0.0%	0	0.0%	0	0.0%	0	0.0%	0	0.0%	5	20.8%	11	45.8%	0	0.0%	0	0.0%	0	0.0%	0	0.0%	0	0.0%	0	0.0%	0	0.0%	0	0.0%	2	8%
	22nd	0	0	0.0%	0	0.0%	0	0.0%	0	0.0%	0	0.0%	0	0.0%	0	0.0%	0	0.0%	0	0.0%	0	0.0%	0	0.0%	0	0.0%	0	0.0%	0	0.0%	0	0.0%	0	0.0%	0	0.0%	0	0.0%	0	0%
<b>Western Total</b>		<b>39</b>	<b>8</b>	<b>21%</b>	<b>2</b>	<b>5.1%</b>	<b>1</b>	<b>2.6%</b>	<b>0</b>	<b>0.0%</b>	<b>0</b>	<b>0.0%</b>	<b>0</b>	<b>0.0%</b>	<b>0</b>	<b>0.0%</b>	<b>0</b>	<b>0.0%</b>	<b>5</b>	<b>12.8%</b>	<b>15</b>	<b>38%</b>	<b>0</b>	<b>0.0%</b>	<b>0</b>	<b>0.0%</b>	<b>0</b>	<b>0.0%</b>	<b>0</b>	<b>0.0%</b>	<b>0</b>	<b>0.0%</b>	<b>0</b>	<b>0.0%</b>	<b>0</b>	<b>0.0%</b>	<b>8</b>	<b>21%</b>		
<b>Individual RD Totals</b>		<b>454</b>	<b>131</b>	<b>29%</b>	<b>42</b>	<b>9%</b>	<b>21</b>	<b>4.6%</b>	<b>3</b>	<b>0.7%</b>	<b>0</b>	<b>0.0%</b>	<b>7</b>	<b>1.5%</b>	<b>0</b>	<b>0.0%</b>	<b>0</b>	<b>0.0%</b>	<b>37</b>	<b>8%</b>	<b>136</b>	<b>30%</b>	<b>0</b>	<b>0.0%</b>	<b>0</b>	<b>0.0%</b>	<b>0</b>	<b>0.0%</b>	<b>0</b>	<b>0.0%</b>	<b>0</b>	<b>0.0%</b>	<b>2</b>	<b>0.4%</b>	<b>0</b>	<b>0.0%</b>	<b>75</b>	<b>17%</b>		
<b>Statewide Totals</b>		<b>454</b>	<b>173</b>	<b>38.1%</b>	<b>24</b>	<b>5.3%</b>	<b>7</b>	<b>1.5%</b>	<b>0</b>	<b>0.0%</b>	<b>0</b>	<b>0.0%</b>	<b>0</b>	<b>0.0%</b>	<b>0</b>	<b>0.0%</b>	<b>0</b>	<b>0.0%</b>	<b>173</b>	<b>38.1%</b>	<b>0</b>	<b>0.0%</b>	<b>0</b>	<b>0.0%</b>	<b>0</b>	<b>0.0%</b>	<b>0</b>	<b>0.0%</b>	<b>2</b>	<b>0.4%</b>	<b>0</b>	<b>0.0%</b>	<b>75</b>	<b>17%</b>						

# Central Region

## CYDC Reason Detained by Judicial District

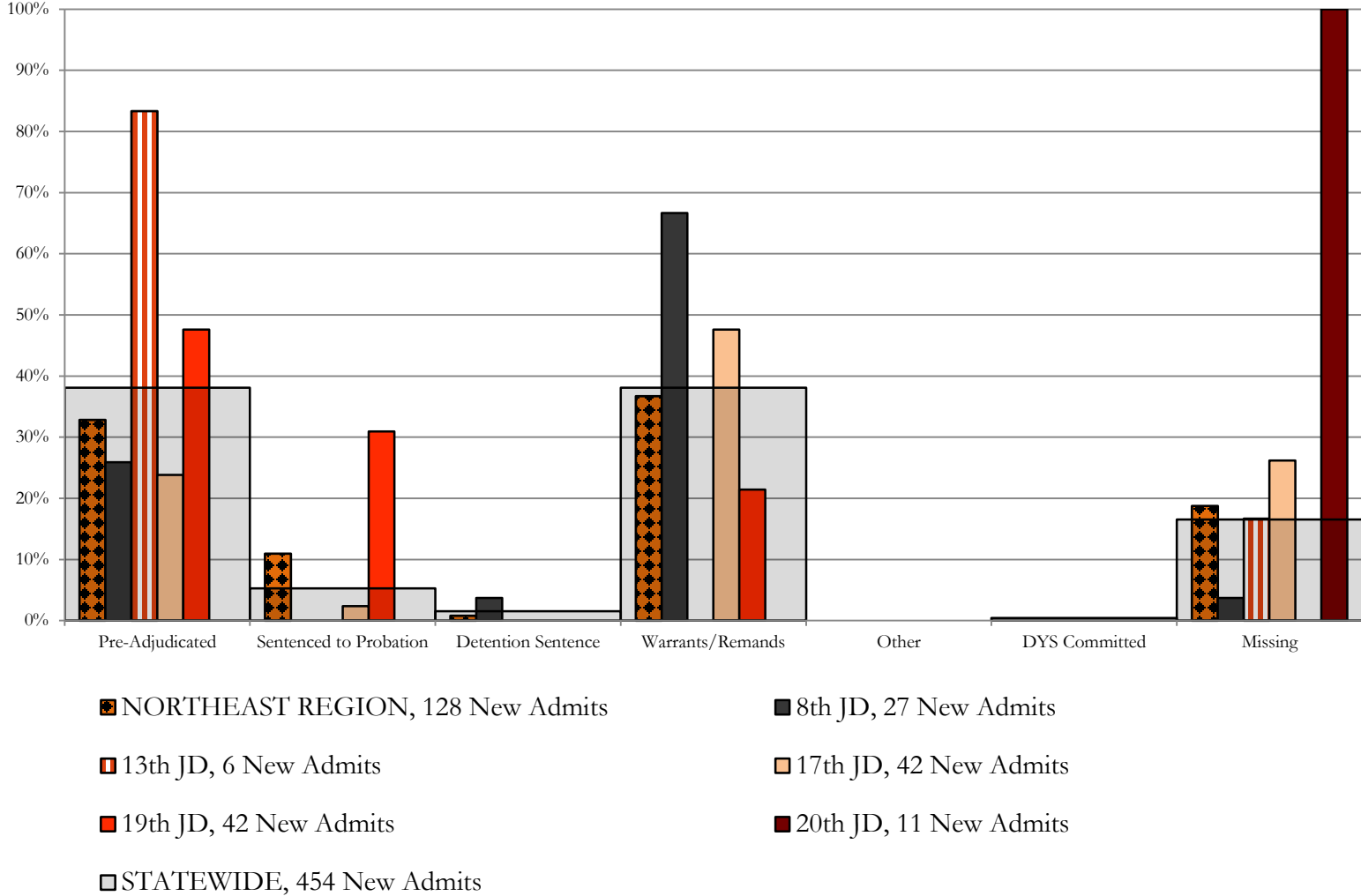
### October 2018 New Admits



# Northeast Region

## CYDC Reason Detained by Judicial District

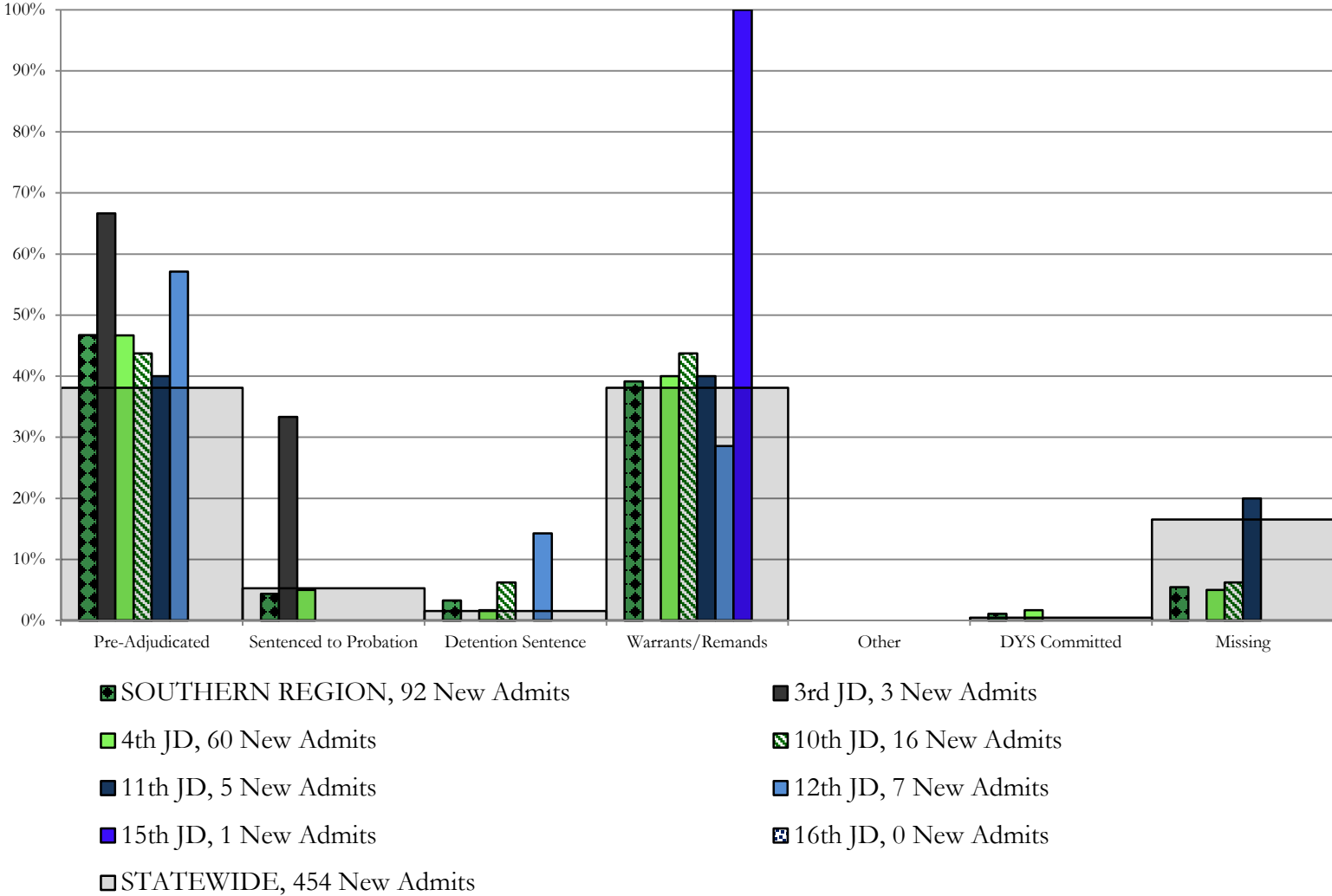
### October 2018 New Admits



# Southern Region

## CYDC Reason Detained by Judicial District

### October 2018 New Admits

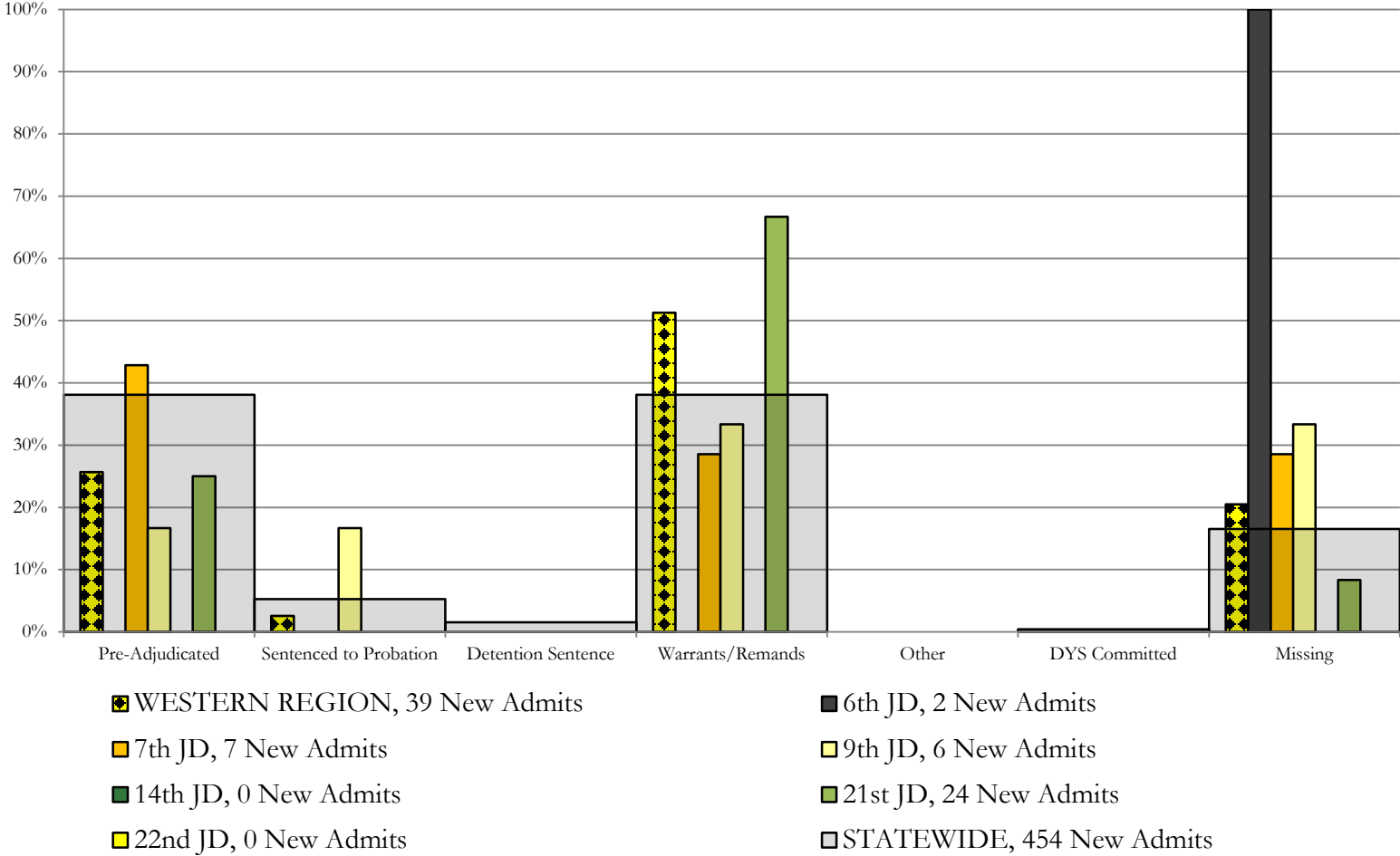




# Western Region

## CYDC Reason Detained by Judicial District

### October 2018 New Admits



# October 2018 CYDC Supplemental Report

## DYS Detention Maximum Youth Served by Judicial District<sup>1</sup>

Region	JD	Detention Capacity	Detention ADP		Maximum Youth Served on a Single Day <sup>2,3</sup>			
			October 2018	YTD	October 2018		YTD	
					Number of Youth	% of Detention Capacity	Number of Youth	% of Detention Capacity
<i>Central Region</i>								
	1st	37	27.1	25.1	33	89.2%	33	89.2%
	2nd	64	47.5	43.5	59	92.2%	59	92.2%
	5th	4	1.0	0.9	3	75.0%	3	75.0%
	18th	61	45.8	45.4	53	86.9%	58	95.1%
<b>Central Region</b>		<b>166</b>	<b>121.4</b>	<b>114.9</b>	<b>133</b>	<b>80.1%</b>	<b>133</b>	<b>80.1%</b>
<i>Northeast Region</i>								
	8th	21	11.5	11.6	16	76.2%	18	85.7%
	13th	5	4.2	3.9	6	120.0%	9	180.0%
	17th	30	22.6	22.1	27	90.0%	29	96.7%
	19th	25	19.9	17.5	25	100.0%	25	100.0%
	20th	13	7.3	5.9	9	69.2%	10	76.9%
<b>Northeast Region</b>		<b>94</b>	<b>65.6</b>	<b>60.9</b>	<b>75</b>	<b>79.8%</b>	<b>75</b>	<b>79.8%</b>
<i>Southern Region</i>								
	3rd	2	2.5	1.6	4	200.0%	4	200.0%
	4th	51	46.1	46.4	52	102.0%	52	102.0%
	10th	13	7.1	6.1	11	84.6%	11	84.6%
	11th	8	1.9	2.5	3	37.5%	6	75.0%
	12th	4	1.1	0.9	3	75.0%	3	75.0%
	15th	2	1.5	1.6	2	100.0%	4	200.0%
	16th	3	0.8	0.8	1	33.3%	3	100.0%
<b>Southern Region</b>		<b>83</b>	<b>61.1</b>	<b>60.0</b>	<b>67</b>	<b>80.7%</b>	<b>70</b>	<b>84.3%</b>
<i>Western Region</i>								
	6th	5	1.6	1.5	3	60.0%	3	60.0%
	7th	7	3.7	2.8	6	85.7%	6	85.7%
	9th	6	3.5	2.0	6	100.0%	6	100.0%
	14th	3	0.9	0.7	2	66.7%	2	66.7%
	21st	14	10.8	12.4	14	100.0%	17	121.4%
	22nd	4	0.1	0.9	1	25.0%	4	100.0%
<b>Western Region</b>		<b>39</b>	<b>20.7</b>	<b>20.3</b>	<b>25</b>	<b>64.1%</b>	<b>27</b>	<b>69.2%</b>
<i>Missing JD or Multiple JDs</i>			2.9	1.3				
<b>Statewide</b>		<b>382</b>	<b>271.8</b>	<b>257.4</b>	<b>287</b>	<b>75.1%</b>	<b>287</b>	<b>75.1%</b>

<sup>1</sup> Maximum youth served is the highest number of youth in detention on a single day during the month or fiscal year.

<sup>2</sup> Regional figures are not the sum of judicial districts, but represent the maximum count on one day for the entire region.

<sup>3</sup> State figures are not the sum of regional figures, but represent the maximum count on one day for the entire state.

## October 2018 CYDC Supplemental Report

### CYDC Community ADP by Judicial District

Region	JD	Committed		Diversion		ICJ		Municipal		Pre-Adjudicated		Sentenced		VCO		Total	
		October 2018	YTD	October 2018	YTD	October 2018	YTD	October 2018	YTD	October 2018	YTD	October 2018	YTD	October 2018	YTD	October 2018	YTD
<i>Central Region</i>																	
	1st	0.5	0.1	1.0	0.3	0.0	0.0	36.4	17.2	148.6	137.9	38.8	33.4	0.0	0.0	225.3	188.9
	2nd	0.0	0.0	0.0	0.0	1.0	0.3	0.0	0.0	146.4	125.7	18.2	15.0	0.0	0.0	165.5	141.0
	5th	0.0	0.0	27.0	26.8	0.0	0.0	0.0	0.0	9.6	8.3	30.0	31.9	0.0	0.0	66.6	67.0
	18th	0.0	0.5	0.0	0.0	0.0	0.1	1.0	0.5	255.8	242.2	30.8	28.5	0.0	0.0	287.6	271.8
<b>Central Total</b>		<b>0.6</b>	<b>0.6</b>	<b>28.0</b>	<b>27.1</b>	<b>1.0</b>	<b>0.4</b>	<b>37.4</b>	<b>17.7</b>	<b>560.4</b>	<b>514.0</b>	<b>117.8</b>	<b>108.9</b>	<b>0.0</b>	<b>0.0</b>	<b>745.1</b>	<b>668.7</b>
<i>Northeast Region</i>																	
	8th	0.0	0.0	0.0	3.4	0.0	0.0	0.0	0.0	43.3	37.0	23.0	19.3	0.0	0.0	66.3	59.7
	13th	0.0	0.0	0.0	0.0	0.0	0.0	2.0	1.9	24.0	23.7	2.8	2.5	3.0	3.0	31.8	31.1
	17th	0.5	0.1	0.0	0.0	0.0	0.0	0.0	0.0	252.3	233.0	78.9	71.9	0.0	0.0	331.7	305.0
	19th	0.0	0.3	2.0	1.5	0.0	0.0	0.0	0.0	60.1	56.7	27.5	26.9	1.0	1.0	90.7	86.4
	20th	3.0	2.6	7.0	6.9	0.0	0.0	0.0	0.0	85.4	76.6	32.0	27.8	10.6	7.5	138.0	121.3
<b>Northeast Total</b>		<b>3.5</b>	<b>3.1</b>	<b>9.0</b>	<b>11.8</b>	<b>0.0</b>	<b>0.0</b>	<b>2.0</b>	<b>1.9</b>	<b>465.1</b>	<b>426.9</b>	<b>164.3</b>	<b>148.5</b>	<b>14.6</b>	<b>11.4</b>	<b>658.5</b>	<b>603.6</b>
<i>Southern Region</i>																	
	3rd	0.0	0.0	0.0	0.0	0.0	0.0	0.0	0.0	11.0	8.4	6.0	5.8	0.0	0.0	17.0	14.2
	4th	2.1	1.3	0.0	0.0	0.0	0.0	23.9	29.5	125.0	114.4	42.7	37.7	0.0	0.0	193.6	182.9
	10th	1.0	1.0	0.0	0.0	1.0	1.0	2.0	2.0	20.7	22.0	8.7	7.7	0.0	0.0	33.3	33.7
	11th	1.0	1.0	0.0	0.0	0.0	0.0	21.0	11.8	21.0	21.7	24.0	22.2	0.0	0.0	67.0	56.7
	12th	0.0	0.0	1.0	1.0	0.0	0.0	3.7	2.5	11.4	9.9	0.2	0.1	0.0	0.0	16.3	13.5
	15th	0.0	0.0	1.3	2.0	0.0	0.0	0.0	0.0	3.5	2.0	4.0	5.1	0.0	0.0	8.9	9.2
	16th	0.0	0.0	0.0	0.0	0.0	0.0	0.0	0.0	10.0	10.1	3.0	2.6	15.0	15.7	28.0	28.3
<b>Southern Total</b>		<b>4.1</b>	<b>3.3</b>	<b>2.3</b>	<b>3.0</b>	<b>1.0</b>	<b>1.0</b>	<b>50.6</b>	<b>45.8</b>	<b>202.6</b>	<b>188.5</b>	<b>88.6</b>	<b>81.1</b>	<b>15.0</b>	<b>15.7</b>	<b>364.2</b>	<b>338.4</b>
<i>Western Region</i>																	
	6th	0.0	0.0	0.0	0.0	0.0	0.0	0.0	0.0	7.0	5.7	0.0	0.0	0.0	0.0	7.0	5.8
	7th	0.0	0.0	4.0	2.6	0.0	0.0	1.0	1.0	12.7	12.4	15.8	14.5	0.0	0.0	33.5	30.4
	9th	0.0	0.0	0.0	0.0	0.0	0.0	0.0	0.0	9.0	9.2	1.5	1.5	0.0	0.0	10.6	10.6
	14th	0.0	0.0	1.0	1.0	0.0	0.0	2.0	1.9	6.0	5.4	2.8	2.1	0.0	0.0	11.8	10.4
	21st	0.0	0.0	0.0	0.0	0.0	0.0	0.0	0.0	59.8	54.3	10.8	12.3	0.0	0.0	70.5	66.6
	22nd	0.0	0.0	0.0	0.0	0.0	0.0	0.0	0.0	5.2	5.9	2.0	2.2	0.0	0.0	7.2	8.1
<b>Western Total</b>		<b>0.0</b>	<b>0.0</b>	<b>5.0</b>	<b>3.6</b>	<b>0.0</b>	<b>0.0</b>	<b>3.0</b>	<b>2.9</b>	<b>99.7</b>	<b>92.9</b>	<b>32.9</b>	<b>32.6</b>	<b>0.0</b>	<b>0.0</b>	<b>140.6</b>	<b>132.0</b>
<b>Statewide Total</b>		<b>8.2</b>	<b>7.0</b>	<b>44.3</b>	<b>45.5</b>	<b>2.0</b>	<b>1.4</b>	<b>93.0</b>	<b>68.3</b>	<b>1327.9</b>	<b>1222.2</b>	<b>403.5</b>	<b>371.0</b>	<b>29.6</b>	<b>27.1</b>	<b>1908.4</b>	<b>1742.7</b>