

September 2018 FY 2018-2019 CYDC JDSAG SUPPLEMENTAL REPORT

Prepared by the Division of Youth Services (DYS)
Data Management & Analysis
November 1, 2018



COLORADO

**Office of Children,
Youth & Families**

Division of Youth Services

September 2018 CYDC Supplemental Report

DYS Commitment ADP & New Commitments by Judicial District

Region	JD ¹	2019 Population Estimates ²	ADP ³		New Commitments		
			September 2018	YTD	September 2018	YTD	YTD Rate ⁴
<i>Central Region</i>							
	1st	55,734	91.7	90.6	3	14	2.5
	2nd	56,489	89.4	91.1	2	10	1.8
	5th	9,445	5.4	5.6	1	1	1.1
	18th	117,328	86.7	90.2	3	10	0.9
Central Total		238,996	273.2	277.5	9	35	1.5
<i>Northeast Region</i>							
	8th	34,282	21.8	25.3	0	0	0.0
	13th	8,510	5.4	5.3	0	0	0.0
	17th	70,426	60.3	60.8	2	7	1.0
	19th	37,897	47.2	50.6	2	3	0.8
	20th	31,849	6.4	7.3	0	0	0.0
Northeast Total		182,964	141.0	149.2	4	10	0.5
<i>Southern Region</i>							
	3rd	1,805	0.0	0.0	0	0	0.0
	4th	81,988	98.1	100.7	1	13	1.6
	10th	18,298	16.1	17.2	1	1	0.5
	11th	7,228	5.0	5.0	0	0	0.0
	12th	5,295	2.0	2.3	0	0	0.0
	15th	2,106	5.8	7.0	0	1	4.7
	16th	2,796	0.1	0.7	0	0	0.0
Southern Total		119,516	127.1	132.8	2	15	1.3
<i>Western Region</i>							
	6th	7,337	3.6	4.1	1	1	1.4
	7th	10,703	8.4	9.6	0	0	0.0
	9th	8,691	6.0	6.1	0	0	0.0
	14th	5,745	2.5	2.7	0	1	1.7
	21st	16,228	35.8	33.5	4	10	6.2
	22nd	3,215	6.7	5.7	0	1	3.1
Western Total		51,919	63.1	61.6	5	13	2.5
Statewide Total		593,395	604.4	621.2	20	73	1.2

¹ JD represents the judicial district in which the client was committed. Regional totals are a sum of their respective judicial districts. Regional totals reported here may differ slightly from those reported in the Monthly Population Report, where region is defined by active caseloads.

² Source: DOLA 2018 Estimates.

³ Due to rounding, totals shown may not be an exact sum of the subtotals.

⁴ Per 10,000 youth in the population.

September 2018 CYDC Supplemental Report

DYS Detention ADP and New Detention Admissions by Judicial District

Region	JD	2019 Population Estimates ¹	ADP		New Admits		
			September 2018	YTD	September 2018	YTD	YTD New Admit Rate ²
<i>Central Region</i>							
	1st	55,734	23.6	24.4	41	136	24.4
	2nd	56,489	43.3	42.2	74	216	38.2
	5th	9,445	0.6	0.9	0	7	7.4
	18th	117,328	45.4	45.3	77	224	19.1
Central Total		238,996	112.9	112.7	192	583	24.4
<i>Northeast Region</i>							
	8th	34,282	12.4	11.6	25	64	18.7
	13th	8,510	2.1	3.8	5	25	29.4
	17th	70,426	22.3	21.9	53	156	22.2
	19th	37,897	17.6	16.7	39	115	30.3
	20th	31,849	7.3	5.4	10	33	10.4
Northeast Total		182,964	61.7	59.4	132	393	21.5
<i>Southern Region</i>							
	3rd	1,805	1.7	1.3	3	5	27.7
	4th	81,988	46.0	46.5	52	173	21.1
	10th	18,298	6.6	5.8	15	44	24.0
	11th	7,228	3.0	2.7	9	28	38.7
	12th	5,295	0.9	0.8	6	12	22.7
	15th	2,106	0.6	1.6	2	7	33.2
	16th	2,796	1.1	0.9	1	2	7.2
Southern Total		119,516	59.7	59.6	88	271	22.7
<i>Western Region</i>							
	6th	7,337	1.6	1.4	3	10	13.6
	7th	10,703	1.7	2.5	3	18	16.8
	9th	8,691	1.4	1.6	2	6	6.9
	14th	5,745	1.4	0.6	1	2	3.5
	21st	16,228	12.4	12.9	23	64	39.4
	22nd	3,215	2.3	1.1	2	7	21.8
Western Total		51,919	20.8	20.1	34	107	20.6
<i>Missing JD or Multiple JDs</i>			0.2	0.7			
Statewide Total		593,395	255.3	252.6	446	1,354	22.8

¹ Source: DOLA 2018 Estimates.

² Per 10,000 youth in the population.

September 2018 CYDC Supplemental Report

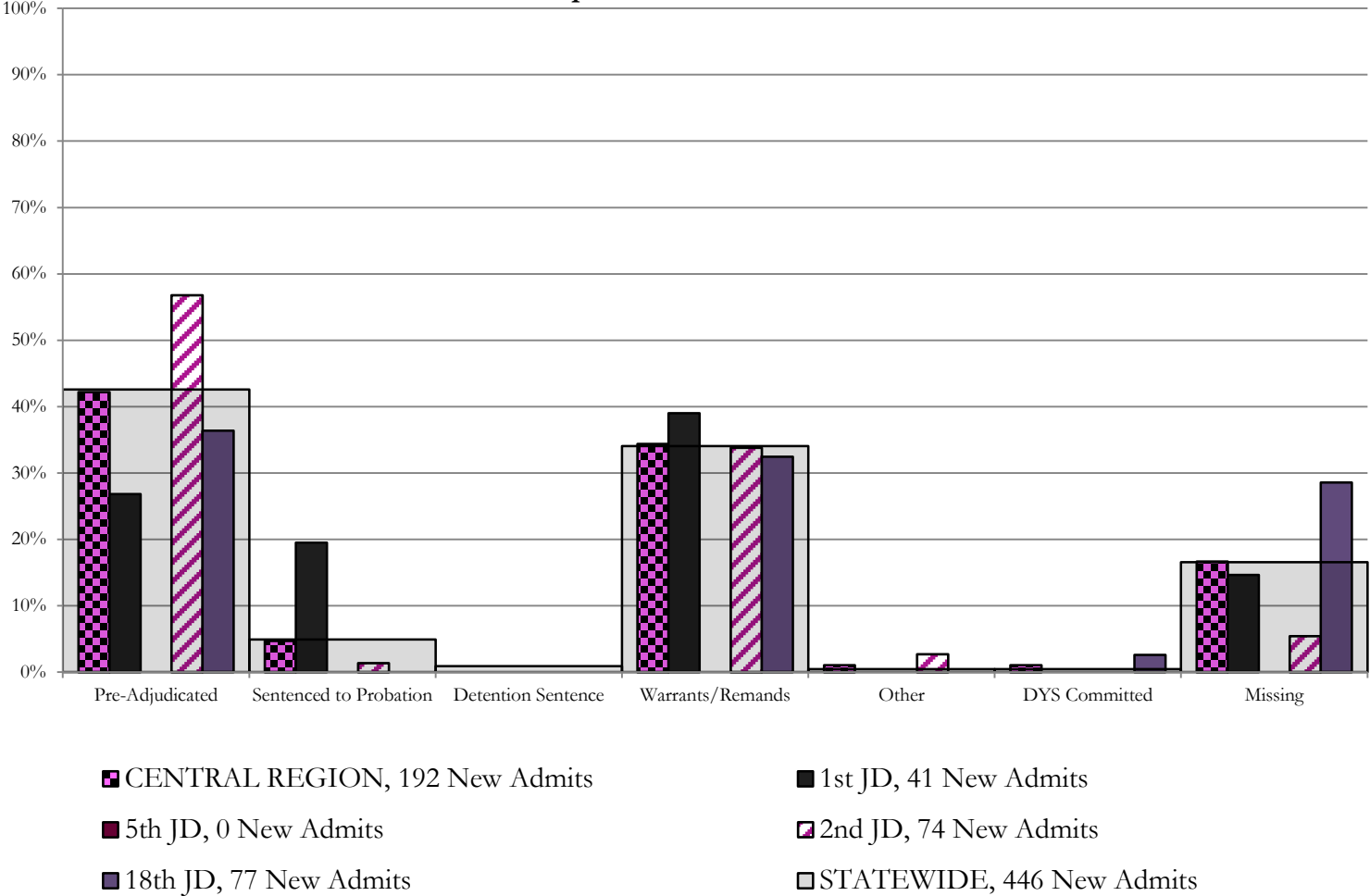
DYS Detention LOS by Judicial District				
Region	JD	YTD Detention Releases	YTD LOS (days)	LOS (days) Compared to State AVG
<i>Central Region</i>				
	1st	126	17.0	-0.7
	2nd	200	15.7	-2.0
	5th	8	13.6	-4.1
	18th	234	16.2	-1.5
Central Total		568	16.2	-1.5
<i>Northeast Region</i>				
	8th	69	16.8	-0.9
	13th	28	13.2	-4.5
	17th	153	14.2	-3.5
	19th	107	12.6	-5.2
	20th	29	11.3	-6.4
Northeast Total		386	13.9	-3.8
<i>Southern Region</i>				
	3rd	4	2.3	-15.4
	4th	170	29.2	11.5
	10th	43	6.0	-11.7
	11th	29	8.0	-9.7
	12th	14	6.7	-11.0
	15th	9	19.4	1.7
	16th	4	23.6	5.9
Southern Total		273	21.4	3.6
<i>Western Region</i>				
	6th	6	12.5	-5.2
	7th	19	11.2	-6.5
	9th	6	15.5	-2.3
	14th	0	0.0	-17.7
	21st	57	14.9	-2.8
	22nd	8	12.3	-5.4
Western Total		96	13.9	-3.8
Statewide Total		1,321	17.7	-

September 2018 CDYC Supplemental Report

CYDC Reason Detained (RD) by Judicial District

Region	JD	Monthly New Admits	Pre-Adjudicated				Sentenced to Probation				Detention Sentence								Warrants/Remands				Other				DYS Committed		Missing									
			Felony		Misdemeanor		Technical Violator		New Charges		Probation Sentence		Detention Sentence		Valid Court Order (VCO) Truancy		Awaiting DSS (Social Services) Placement		Failure to Appear (FTA)		Failure to Comply (FTC)		Interstate Compact on Juveniles (ICJ) Hold		Immigration Hold		No Bond Hold		Out-of-Country Warrant		Institutional		Parole		Missing			
			#	%	#	%	#	%	#	%	#	%	#	%	#	%	#	%	#	%	#	%	#	%	#	%	#	%	#	%	#	%	#	%	#	%		
Central Region																																						
	1st	41	6	14.6%	5	12.2%	7	17.1%	1	2.4%	0	0.0%	0	0.0%	0	0.0%	0	0.0%	0	0.0%	4	9.8%	12	29.3%	0	0.0%	0	0.0%	0	0.0%	0	0.0%	0	0.0%	0	0.0%	6	14.6%
	2nd	74	37	50.0%	5	6.8%	1	1.4%	0	0.0%	0	0.0%	0	0.0%	0	0.0%	0	0.0%	8	10.8%	17	23.0%	2	2.7%	0	0.0%	0	0.0%	0	0.0%	0	0.0%	0	0.0%	0	0.0%	4	5.4%
	5th	0	0	0.0%	0	0.0%	0	0.0%	0	0.0%	0	0.0%	0	0.0%	0	0.0%	0	0.0%	0	0.0%	0	0.0%	0	0.0%	0	0.0%	0	0.0%	0	0.0%	0	0.0%	0	0.0%	0	0.0%	0	0.0%
	18th	77	15	19.5%	13	16.9%	0	0.0%	0	0.0%	0	0.0%	0	0.0%	0	0.0%	0	0.0%	4	5.2%	21	27.3%	0	0.0%	0	0.0%	0	0.0%	0	0.0%	2	2.6%	0	0.0%	22	28.6%		
	Central Total	192	58	30%	23	12%	8	4.2%	1	0.5%	0	0.0%	0	0.0%	0	0.0%	0	0.0%	16	8%	50	26%	2	1.0%	0	0.0%	0	0.0%	0	0.0%	0	0.0%	2	1.0%	0	0.0%	32	16.7%
Northeast Region																																						
	8th	25	9	36.0%	4	16.0%	0	0.0%	0	0.0%	0	0.0%	2	8.0%	0	0.0%	0	0.0%	5	20.0%	2	8.0%	0	0.0%	0	0.0%	0	0.0%	0	0.0%	0	0.0%	0	0.0%	0	0.0%	3	12.0%
	13th	5	2	40.0%	1	20.0%	0	0.0%	0	0.0%	0	0.0%	0	0.0%	0	0.0%	0	0.0%	0	0.0%	1	20.0%	0	0.0%	0	0.0%	0	0.0%	0	0.0%	0	0.0%	0	0.0%	1	20.0%		
	17th	53	12	22.6%	4	7.5%	0	0.0%	0	0.0%	0	0.0%	0	0.0%	0	0.0%	0	0.0%	3	5.7%	18	34.0%	0	0.0%	0	0.0%	0	0.0%	0	0.0%	0	0.0%	0	0.0%	16	30.2%		
	19th	39	12	30.8%	6	15.4%	12	30.8%	0	0.0%	0	0.0%	0	0.0%	0	0.0%	0	0.0%	2	5.1%	7	17.9%	0	0.0%	0	0.0%	0	0.0%	0	0.0%	0	0.0%	0	0.0%	0	0.0%	0	0.0%
	20th	10	0	0.0%	0	0.0%	0	0.0%	0	0.0%	0	0.0%	0	0.0%	0	0.0%	0	0.0%	0	0.0%	0	0.0%	0	0.0%	0	0.0%	0	0.0%	0	0.0%	0	0.0%	0	0.0%	10	100.0%		
	Northeast Total	132	35	27%	15	11%	12	9.1%	0	0.0%	0	0.0%	2	1.5%	0	0.0%	0	0.0%	10	7.6%	28	21%	0	0.0%	0	0.0%	0	0.0%	0	0.0%	0	0.0%	0	0.0%	30	23%		
Southern Region																																						
	3rd	3	1	33.3%	1	33.3%	0	0.0%	0	0.0%	0	0.0%	0	0.0%	0	0.0%	0	0.0%	0	0.0%	0	0.0%	0	0.0%	0	0.0%	0	0.0%	0	0.0%	0	0.0%	0	0.0%	1	33.3%		
	4th	52	23	44.2%	10	19.2%	0	0.0%	0	0.0%	0	0.0%	1	1.9%	0	0.0%	0	0.0%	3	5.8%	12	23.1%	0	0.0%	0	0.0%	0	0.0%	0	0.0%	0	0.0%	0	0.0%	3	5.8%		
	10th	15	3	20.0%	2	13.3%	0	0.0%	0	0.0%	0	0.0%	0	0.0%	0	0.0%	0	0.0%	2	13.3%	8	53.3%	0	0.0%	0	0.0%	0	0.0%	0	0.0%	0	0.0%	0	0.0%	0	0.0%	0	0.0%
	11th	9	4	44.4%	0	0.0%	0	0.0%	0	0.0%	0	0.0%	0	0.0%	0	0.0%	0	0.0%	2	22.2%	1	11.1%	0	0.0%	0	0.0%	0	0.0%	0	0.0%	0	0.0%	2	22.2%				
	12th	6	4	66.7%	0	0.0%	0	0.0%	0	0.0%	0	0.0%	0	0.0%	0	0.0%	0	0.0%	1	16.7%	1	16.7%	0	0.0%	0	0.0%	0	0.0%	0	0.0%	0	0.0%	0	0.0%	0	0.0%	0	0.0%
	15th	2	0	0.0%	0	0.0%	0	0.0%	0	0.0%	0	0.0%	0	0.0%	0	0.0%	0	0.0%	2	100.0%	0	0.0%	0	0.0%	0	0.0%	0	0.0%	0	0.0%	0	0.0%	0	0.0%	0	0.0%	0	0.0%
	16th	1	1	100.0%	0	0.0%	0	0.0%	0	0.0%	0	0.0%	0	0.0%	0	0.0%	0	0.0%	0	0.0%	0	0.0%	0	0.0%	0	0.0%	0	0.0%	0	0.0%	0	0.0%	0	0.0%	0	0.0%	0	0.0%
	Southern Total	88	36	41%	13	15%	0	0.0%	0	0.0%	0	0.0%	1	1.1%	0	0.0%	0	0.0%	10	11%	22	25%	0	0.0%	0	0.0%	0	0.0%	0	0.0%	0	0.0%	0	0.0%	6	7%		
Western Region																																						
	6th	3	1	33.3%	0	0.0%	0	0.0%	0	0.0%	0	0.0%	0	0.0%	0	0.0%	0	0.0%	0	0.0%	0	0.0%	0	0.0%	0	0.0%	0	0.0%	0	0.0%	0	0.0%	0	0.0%	2	67%		
	7th	3	2	66.7%	0	0.0%	0	0.0%	0	0.0%	0	0.0%	1	33.3%	0	0.0%	0	0.0%	0	0.0%	0	0.0%	0	0.0%	0	0.0%	0	0.0%	0	0.0%	0	0.0%	0	0.0%	0	0.0%	0	0.0%
	9th	2	0	0.0%	0	0.0%	1	50.0%	0	0.0%	0	0.0%	0	0.0%	0	0.0%	0	0.0%	0	0.0%	1	50.0%	0	0.0%	0	0.0%	0	0.0%	0	0.0%	0	0.0%	0	0.0%	0	0.0%	0	0.0%
	14th	1	0	0.0%	0	0.0%	0	0.0%	0	0.0%	0	0.0%	0	0.0%	0	0.0%	0	0.0%	0	0.0%	0	0.0%	0	0.0%	0	0.0%	0	0.0%	0	0.0%	0	0.0%	1	100%				
	21st	23	4	17.4%	3	13.0%	0	0.0%	0	0.0%	0	0.0%	0	0.0%	0	0.0%	0	0.0%	2	8.7%	13	56.5%	0	0.0%	0	0.0%	0	0.0%	0	0.0%	0	0.0%	1	4%				
	22nd	2	0	0.0%	0	0.0%	0	0.0%	0	0.0%	0	0.0%	0	0.0%	0	0.0%	0	0.0%	0	0.0%	0	0.0%	0	0.0%	0	0.0%	0	0.0%	0	0.0%	0	0.0%	2	100%				
	Western Total	34	7	21%	3	8.8%	1	2.9%	0	0.0%	0	0.0%	1	2.9%	0	0.0%	0	0.0%	2	5.9%	14	41%	0	0.0%	0	0.0%	0	0.0%	0	0.0%	0	0.0%	6	18%				
	Individual RD Totals	446	136	30%	54	12%	21	4.7%	1	0.2%	0	0.0%	4	0.9%	0	0.0%	0	0.0%	38	9%	114	26%	2	0.4%	0	0.0%	0	0.0%	0	0.0%	0	0.0%	2	0.4%	0	0.0%	74	17%
	Statewide Totals	446	190	42.6%	22	4.9%	4	0.9%	0	0.0%	0	0.0%	0	0.0%	0	0.0%	0	0.0%	152	34.1%	2	0.4%	0	0.0%	0	0.0%	0	0.0%	2	0.4%	0	0.0%	74	17%				

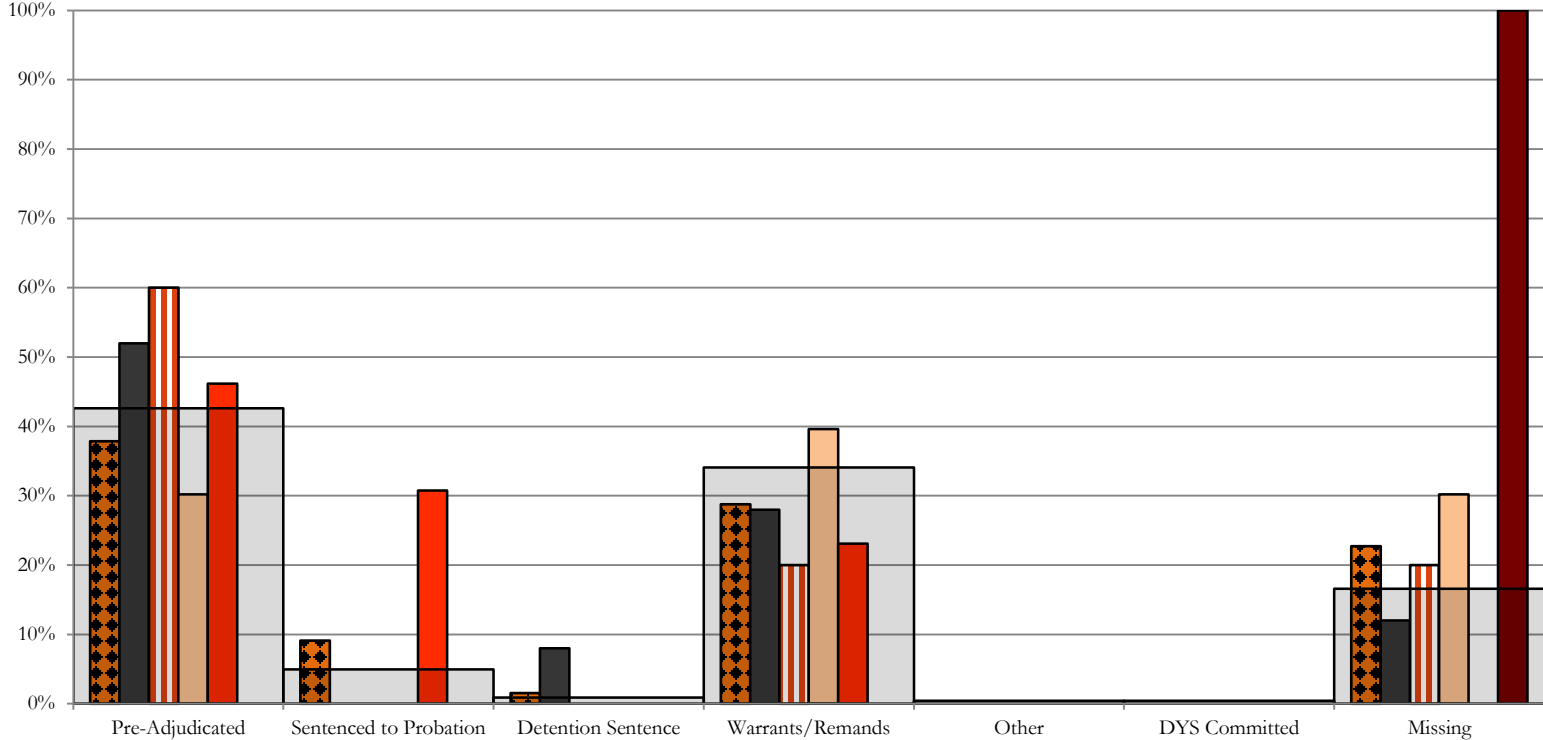
Central Region CYDC Reason Detained by Judicial District September 2018 New Admits



Northeast Region

CYDC Reason Detained by Judicial District

September 2018 New Admits

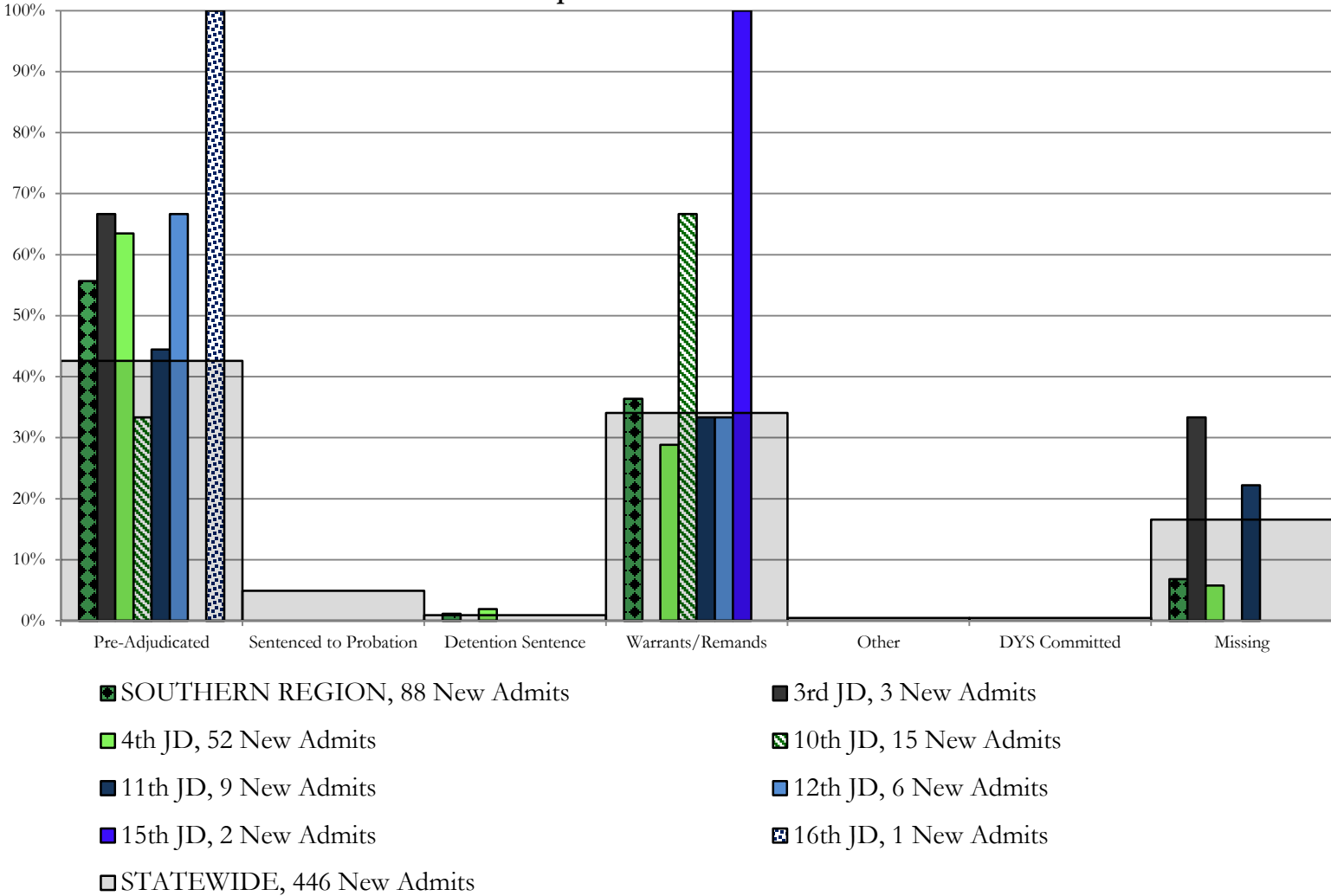


- NORTHEAST REGION, 132 New Admits
- 8th JD, 25 New Admits
- 13th JD, 5 New Admits
- 17th JD, 53 New Admits
- 19th JD, 39 New Admits
- 20th JD, 10 New Admits
- STATEWIDE, 446 New Admits

Southern Region

CYDC Reason Detained by Judicial District

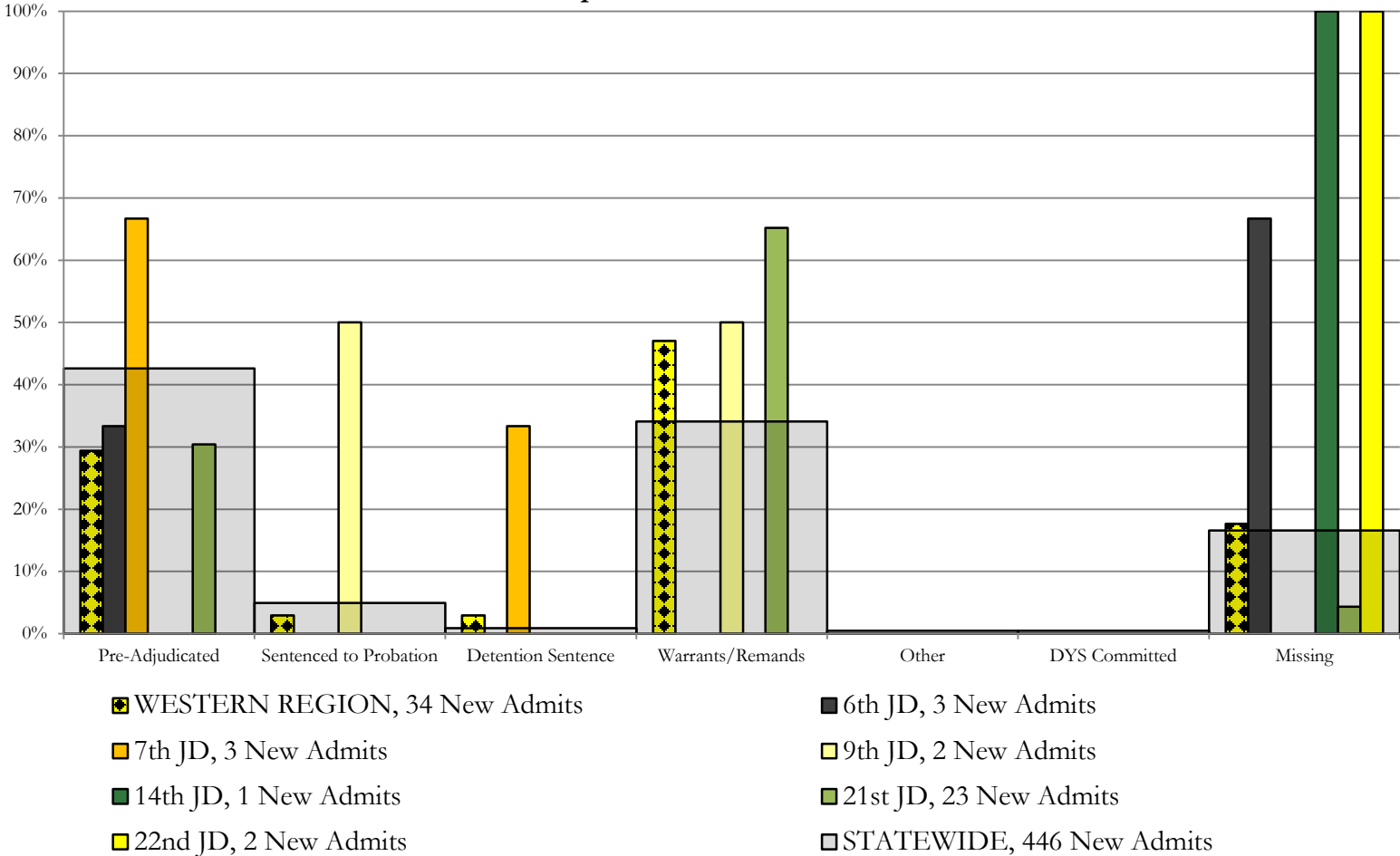
September 2018 New Admits



Western Region

CYDC Reason Detained by Judicial District

September 2018 New Admits



September 2018 CYDC Supplemental Report

DYS Detention Maximum Youth Served by Judicial District¹

Region	JD	Detention Capacity	Detention ADP		Maximum Youth Served on a Single Day ^{2,3}			
			September 2018	YTD	September 2018		YTD	
					Number of Youth	% of Detention Capacity	Number of Youth	% of Detention Capacity
<i>Central Region</i>								
	1st	37	23.6	24.4	27	73.0%	33	89.2%
	2nd	64	43.3	42.2	52	81.3%	52	81.3%
	5th	4	0.6	0.9	1	25.0%	2	50.0%
	18th	61	45.4	45.3	53	86.9%	58	95.1%
Central Region		166	112.9	112.7	123	74.1%	130	78.3%
<i>Northeast Region</i>								
	8th	21	12.4	11.6	16	76.2%	18	85.7%
	13th	5	2.1	3.8	4	80.0%	9	180.0%
	17th	30	22.3	21.9	29	96.7%	29	96.7%
	19th	25	17.6	16.7	24	96.0%	24	96.0%
	20th	13	7.3	5.4	10	76.9%	10	76.9%
Northeast Region		94	61.7	59.4	75	79.8%	75	79.8%
<i>Southern Region</i>								
	3rd	2	1.7	1.3	2	100.0%	2	100.0%
	4th	51	46.0	46.5	51	100.0%	52	102.0%
	10th	13	6.6	5.8	11	84.6%	11	84.6%
	11th	8	3.0	2.7	6	75.0%	6	75.0%
	12th	4	0.9	0.8	3	75.0%	3	75.0%
	15th	2	0.6	1.6	1	50.0%	4	200.0%
	16th	3	1.1	0.9	2	66.7%	3	100.0%
Southern Region		83	59.7	59.6	70	84.3%	70	84.3%
<i>Western Region</i>								
	6th	5	1.6	1.4	3	60.0%	3	60.0%
	7th	7	1.7	2.5	4	57.1%	6	85.7%
	9th	6	1.4	1.6	2	33.3%	2	33.3%
	14th	3	1.4	0.6	2	66.7%	2	66.7%
	21st	14	12.4	12.9	17	121.4%	17	121.4%
	22nd	4	2.3	1.1	4	100.0%	4	100.0%
Western Region		39	20.8	20.1	27	69.2%	27	69.2%
<i>Missing JD or Multiple JDs</i>			0.2	0.7				
Statewide		382	255.3	252.6	280	73.3%	284	74.3%

¹ Maximum youth served is the highest number of youth in detention on a single day during the month or fiscal year. All maximums retrieved from the CYFF Database on October 19th, 2018. Due to CYFF Database outage and data corruption, DYS can not ensure the accuracy of all maximum calculations presented in this report.

² Regional figures are not the sum of judicial districts, but represent the maximum count on one day for the entire region.

³ State figures are not the sum of regional figures, but represent the maximum count on one day for the entire state.

September 2018 CYDC Supplemental Report

CYDC Community ADP by Judicial District

Region	JD	Committed		Diversion		ICJ		Municipal		Pre-Adjudicated		Sentenced		VCO		Total	
		September	YTD	September	YTD	September	YTD	September	YTD	September	YTD	September	YTD	September	YTD	September	YTD
<i>Central Region</i>																	
	1st	0.0	0.0	0.1	0.0	0.0	0.0	21.2	10.7	130.8	136.8	40.3	34.1	0.0	0.0	192.4	181.6
	2nd	0.0	0.0	0.0	0.0	0.3	0.1	0.0	0.0	123.3	118.8	14.4	14.2	0.0	0.0	138.0	133.1
	5th	0.0	0.0	27.0	26.7	0.0	0.0	0.0	0.0	8.0	7.8	32.5	32.6	0.0	0.0	67.5	67.1
	18th	0.9	0.6	0.0	0.0	0.0	0.1	1.0	0.4	249.6	239.1	27.1	27.3	0.0	0.0	278.6	267.5
Central Total		0.9	0.7	27.1	26.8	0.3	0.2	22.1	11.0	511.8	502.6	114.2	108.1	0.0	0.0	676.4	649.3
<i>Northeast Region</i>																	
	8th	0.0	0.0	0.0	4.5	0.0	0.0	0.0	0.0	41.1	35.1	21.6	17.5	0.0	0.0	62.7	57.1
	13th	0.0	0.0	0.0	0.0	0.0	0.0	2.0	1.9	27.4	24.6	3.5	2.8	3.0	3.0	36.0	32.3
	17th	0.0	0.0	0.0	0.0	0.0	0.0	0.0	0.0	239.3	226.7	74.1	69.6	0.0	0.0	313.4	296.3
	19th	0.0	0.4	1.9	1.3	0.0	0.0	0.0	0.0	56.1	54.9	25.6	25.6	1.0	1.0	84.5	83.1
	20th	2.0	2.0	7.0	6.9	0.0	0.0	0.0	0.0	77.4	73.3	29.4	26.2	3.0	3.0	118.8	111.4
Northeast Total		2.0	2.4	8.9	12.7	0.0	0.0	2.0	1.9	441.3	414.6	154.2	141.6	7.0	7.0	615.4	580.1
<i>Southern Region</i>																	
	3rd	0.0	0.0	0.0	0.0	0.0	0.0	0.0	0.0	9.6	7.5	6.0	5.7	0.0	0.0	15.6	13.2
	4th	2.4	1.2	0.0	0.0	0.0	0.0	30.8	31.5	121.8	115.5	45.7	38.2	0.0	0.0	200.8	186.3
	10th	1.0	1.0	0.0	0.0	1.0	1.0	2.0	2.0	21.2	24.4	8.3	7.4	0.0	0.0	33.5	35.8
	11th	1.0	1.0	0.0	0.0	0.0	0.0	15.6	8.7	21.0	21.9	23.2	21.6	0.0	0.0	60.8	53.3
	12th	0.0	0.0	1.0	1.0	0.0	0.0	3.0	3.0	13.3	11.2	0.0	0.0	0.0	0.0	17.3	15.2
	15th	0.0	0.0	2.0	2.3	0.0	0.0	0.0	0.0	2.2	1.6	4.4	5.4	0.0	0.0	8.6	9.2
	16th	0.0	0.0	0.0	0.0	0.0	0.0	0.0	0.0	10.0	10.1	2.9	2.5	15.7	15.9	28.6	28.5
Southern Total		4.4	3.2	3.0	3.3	1.0	1.0	51.4	45.2	199.1	192.1	90.5	80.8	15.7	15.9	365.1	341.5
<i>Western Region</i>																	
	6th	0.0	0.0	0.0	0.0	0.0	0.0	0.0	0.0	4.5	5.2	0.1	0.0	0.0	0.0	4.6	5.2
	7th	0.0	0.0	2.0	1.9	0.0	0.0	1.0	1.0	13.0	13.2	16.0	14.0	0.0	0.0	32.0	30.2
	9th	0.0	0.0	0.0	0.0	0.0	0.0	0.0	0.0	9.6	9.2	1.0	1.4	0.0	0.0	10.6	10.6
	14th	0.0	0.0	1.0	1.0	0.0	0.0	2.0	1.9	6.1	5.4	2.0	1.8	0.0	0.0	11.1	10.1
	21st	0.0	0.0	0.0	0.0	0.0	0.0	0.0	0.0	57.2	52.5	15.2	13.3	0.0	0.0	72.3	65.8
	22nd	0.0	0.0	0.0	0.0	0.0	0.0	0.0	0.0	5.7	6.2	2.6	2.2	0.0	0.0	8.3	8.5
Western Total		0.0	0.0	3.0	2.9	0.0	0.0	3.0	2.9	96.1	91.8	36.8	32.8	0.0	0.0	138.9	130.4
Statewide Total		7.3	6.2	42.0	45.7	1.3	1.2	78.6	61.1	1248.2	1201.1	395.8	363.3	22.7	22.9	1795.9	1701.4