

August 2018 FY 2018-2019 CYDC JDSAG SUPPLEMENTAL REPORT

Prepared by the Division of Youth Services (DYS)
Data Management & Analysis
October 2, 2018



COLORADO

**Office of Children,
Youth & Families**

Division of Youth Services

August 2018 CYDC Supplemental Report

DYS Commitment ADP & New Commitments by Judicial District

Region	JD ¹	2019 Population Estimates ²	ADP ³		New Commitments		
			August 2018	YTD	August 2018	YTD	YTD Rate ⁴
<i>Central Region</i>							
	1st	55,734	91.5	90.1	4	11	2.0
	2nd	56,489	91.6	91.8	3	8	1.4
	5th	9,445	5.5	5.7	0	0	0.0
	18th	117,328	90.2	91.7	3	7	0.6
Central Total		238,996	278.7	279.4	10	26	1.1
<i>Northeast Region</i>							
	8th	34,282	25.0	26.9	0	0	0.0
	13th	8,510	5.0	5.3	0	0	0.0
	17th	70,426	61.5	61.1	2	5	0.7
	19th	37,897	49.9	52.2	1	1	0.3
	20th	31,849	7.5	7.7	0	0	0.0
Northeast Total		182,964	148.8	153.2	3	6	0.3
<i>Southern Region</i>							
	3rd	1,805	0.0	0.0	0	0	0.0
	4th	81,988	101.5	101.9	7	12	1.5
	10th	18,298	17.7	17.7	0	0	0.0
	11th	7,228	5.0	5.0	0	0	0.0
	12th	5,295	2.0	2.4	0	0	0.0
	15th	2,106	7.8	7.5	0	1	4.7
	16th	2,796	1.0	1.0	0	0	0.0
Southern Total		119,516	135.1	135.5	7	13	1.1
<i>Western Region</i>							
	6th	7,337	3.5	4.3	0	0	0.0
	7th	10,703	8.7	10.1	0	0	0.0
	9th	8,691	5.8	6.2	0	0	0.0
	14th	5,745	2.9	2.8	0	1	1.7
	21st	16,228	31.5	32.4	4	5	3.1
	22nd	3,215	5.3	5.2	0	0	0.0
Western Total		51,919	57.8	60.9	4	6	1.2
Statewide Total		593,395	620.3	629.1	24	51	0.9

¹ JD represents the judicial district in which the client was committed. Regional totals are a sum of their respective judicial districts. Regional totals reported here may differ slightly from those reported in the Monthly Population Report, where region is defined by active caseloads.

² Source: DOLA 2018 Estimates.

³ Due to rounding, totals shown may not be an exact sum of the subtotals.

⁴ Per 10,000 youth in the population.

August 2018 CYDC Supplemental Report

DYS Detention ADP and New Detention Admissions by Judicial District

Region	JD	2019 Population Estimates ¹	ADP		New Admits		YTD New Admit Rate ²
			August 2018	YTD	August 2018	YTD	
<i>Central Region</i>							
	1st	55,734	21.4	24.7	48	95	17.0
	2nd	56,489	41.7	41.6	63	141	25.0
	5th	9,445	1.4	1.1	5	7	7.4
	18th	117,328	39.8	45.2	69	147	12.5
Central Total		238,996	104.3	112.6	185	390	16.3
<i>Northeast Region</i>							
	8th	34,282	9.6	11.2	22	39	11.4
	13th	8,510	4.1	4.6	6	20	23.5
	17th	70,426	19.2	21.7	41	103	14.6
	19th	37,897	16.9	16.2	38	76	20.1
	20th	31,849	4.5	4.5	13	23	7.2
Northeast Total		182,964	54.3	58.3	120	261	14.3
<i>Southern Region</i>							
	3rd	1,805	1.0	1.2	1	2	11.1
	4th	81,988	45.5	46.8	58	121	14.8
	10th	18,298	5.0	5.4	10	29	15.8
	11th	7,228	2.2	2.6	10	19	26.3
	12th	5,295	0.4	0.7	4	6	11.3
	15th	2,106	1.8	2.1	3	5	23.7
	16th	2,796	0.1	0.8	1	1	3.6
Southern Total		119,516	56.0	59.6	87	183	15.3
<i>Western Region</i>							
	6th	7,337	2.0	1.4	3	7	9.5
	7th	10,703	2.8	2.9	9	15	14.0
	9th	8,691	1.4	1.6	1	4	4.6
	14th	5,745	0.3	0.2	1	1	1.7
	21st	16,228	13.0	13.1	20	41	25.3
	22nd	3,215	0.2	0.6	4	5	15.6
Western Total		51,919	19.7	19.8	38	73	14.1
<i>Missing JD or Multiple JDs</i>			<i>1.0</i>	<i>1.0</i>			
Statewide Total		593,395	235.2	251.2	430	907	15.3

¹ Source: DOLA 2018 Estimates.

² Per 10,000 youth in the population.

August 2018 CYDC Supplemental Report

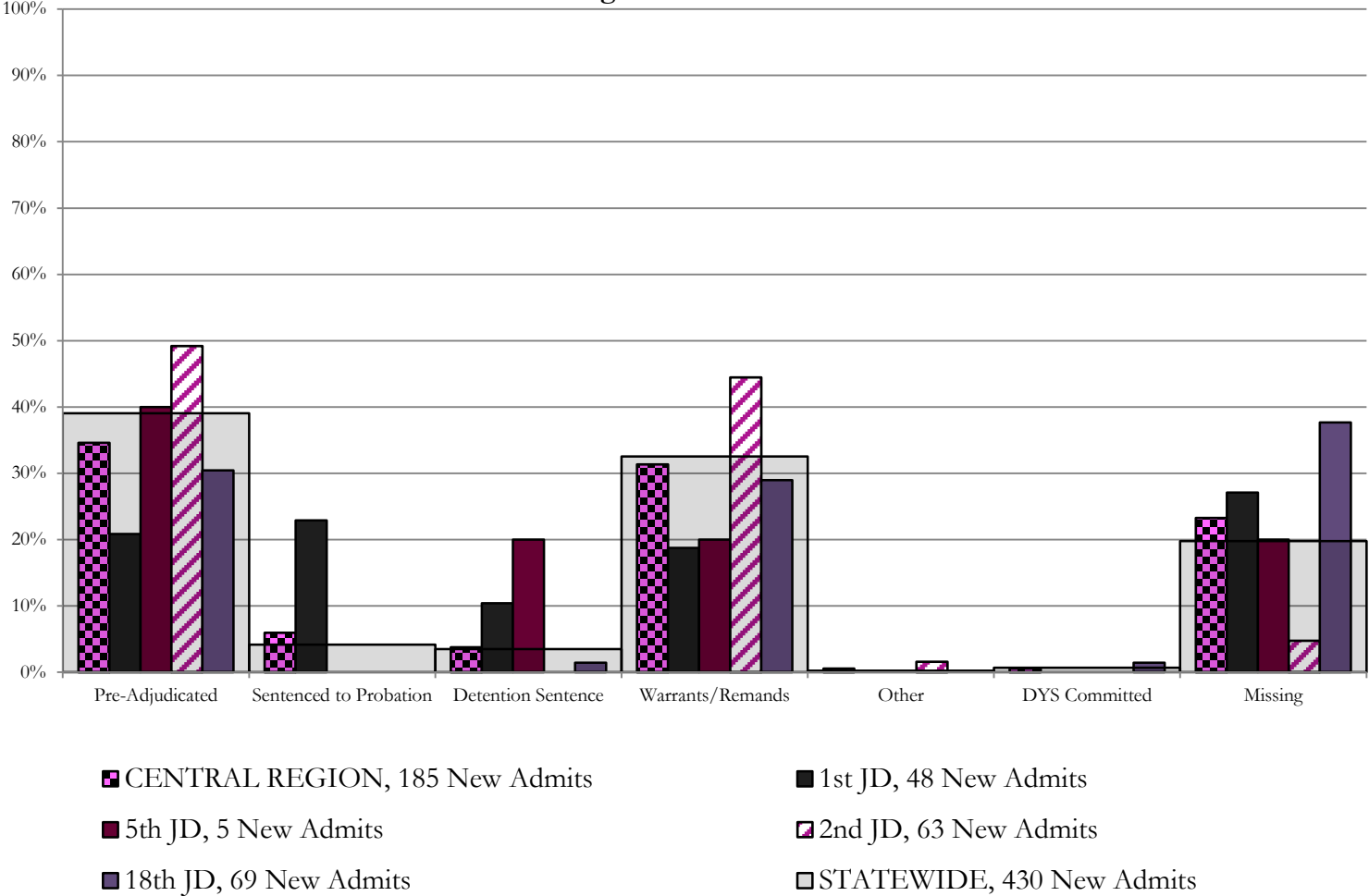
DYS Detention LOS by Judicial District				
Region	JD	YTD Detention Releases	YTD LOS (days)	LOS (days) Compared to State AVG
<i>Central Region</i>				
	1st	90	18.2	0.0
	2nd	138	16.4	-1.8
	5th	8	13.6	-4.5
	18th	162	16.0	-2.1
Central Total		398	16.6	-1.5
<i>Northeast Region</i>				
	8th	46	16.1	-2.0
	13th	22	10.0	-8.1
	17th	109	15.0	-3.2
	19th	74	11.4	-6.7
	20th	18	12.3	-5.9
Northeast Total		269	13.6	-4.5
<i>Southern Region</i>				
	3rd	2	3.1	-15.1
	4th	127	28.9	10.7
	10th	31	6.0	-12.1
	11th	18	7.7	-10.4
	12th	8	9.0	-9.2
	15th	7	21.1	3.0
	16th	3	29.6	11.5
Southern Total		196	22.0	3.8
<i>Western Region</i>				
	6th	6	12.5	-5.6
	7th	13	14.1	-4.0
	9th	4	20.7	2.6
	14th	0	0.0	-18.1
	21st	37	17.4	-0.7
	22nd	5	13.3	-4.8
Western Total		65	16.2	-1.9
Statewide Total		926	18.1	-

August 2018 CDYC Supplemental Report

CYDC Reason Detained (RD) by Judicial District

Region	JD	Pre-Adjudicated				Sentenced to Probation				Detention Sentence						Warrants/Remands				Other						DYS Committed		Missing								
		Felony		Misdemeanor		Technical Violator		New Charges		Probation Sentence		Detention Sentence		Valid Court Order (VCO) Truancy		Awaiting DSS (Social Services) Placement		Failure to Appear (FTA)		Failure to Comply (FTC)		Interstate Compact on Juveniles (ICJ) Hold		Immigration Hold		No Bond Hold		Out-of-Country Warrant		Institutional		Parole		Missing		
		#	%	#	%	#	%	#	%	#	%	#	%	#	%	#	%	#	%	#	%	#	%	#	%	#	%	#	%	#	%	#	%	#	%	
<i>Central Region</i>																																				
	1st	48	7	14.6%	3	6.3%	11	22.9%	0	0.0%	0	0.0%	5	10.4%	0	0.0%	0	0.0%	3	6.3%	6	12.5%	0	0.0%	0	0.0%	0	0.0%	0	0.0%	0	0.0%	0	0.0%	13	27.1%
	2nd	63	27	42.9%	4	6.3%	0	0.0%	0	0.0%	0	0.0%	0	0.0%	0	0.0%	6	9.5%	22	34.9%	1	1.6%	0	0.0%	0	0.0%	0	0.0%	0	0.0%	0	0.0%	0	0.0%	3	4.8%
	5th	5	2	40.0%	0	0.0%	0	0.0%	0	0.0%	0	0.0%	1	20.0%	0	0.0%	0	0.0%	0	0.0%	1	20.0%	0	0.0%	0	0.0%	0	0.0%	0	0.0%	0	0.0%	0	0.0%	1	20.0%
	18th	69	13	18.8%	8	11.6%	0	0.0%	0	0.0%	0	0.0%	1	1.4%	0	0.0%	0	0.0%	5	7.2%	15	21.7%	0	0.0%	0	0.0%	0	0.0%	0	0.0%	0	0.0%	1	1.4%	26	37.7%
Central Total		185	49	26%	15	8%	11	5.9%	0	0.0%	0	0.0%	7	3.8%	0	0.0%	0	0.0%	14	8%	44	24%	1	0.5%	0	0.0%	0	0.0%	0	0.0%	0	0.0%	1	0.5%	43	23.2%
<i>Northeast Region</i>																																				
	8th	22	6	27.3%	2	9.1%	0	0.0%	0	0.0%	0	0.0%	2	9.1%	0	0.0%	0	0.0%	2	9.1%	9	40.9%	0	0.0%	0	0.0%	0	0.0%	0	0.0%	0	0.0%	0	0.0%	1	4.5%
	13th	6	3	50.0%	1	16.7%	0	0.0%	0	0.0%	0	0.0%	0	0.0%	0	0.0%	0	0.0%	0	0.0%	1	16.7%	0	0.0%	0	0.0%	0	0.0%	0	0.0%	0	0.0%	1	16.7%		
	17th	41	15	36.6%	1	2.4%	0	0.0%	0	0.0%	0	0.0%	2	4.9%	0	0.0%	0	0.0%	4	9.8%	12	29.3%	0	0.0%	0	0.0%	0	0.0%	0	0.0%	0	0.0%	0	0.0%	7	17.1%
	19th	38	9	23.7%	7	18.4%	6	15.8%	0	0.0%	0	0.0%	0	0.0%	0	0.0%	0	0.0%	14	36.8%	0	0.0%	0	0.0%	0	0.0%	0	0.0%	0	0.0%	0	0.0%	0	0.0%	2	5.3%
	20th	13	2	15.4%	0	0.0%	0	0.0%	0	0.0%	0	0.0%	0	0.0%	0	0.0%	1	7.7%	0	0.0%	1	7.7%	0	0.0%	0	0.0%	0	0.0%	0	0.0%	0	0.0%	0	0.0%	9	69.2%
Northeast Total		120	35	29%	11	9%	6	5.0%	0	0.0%	0	0.0%	4	3.3%	0	0.0%	1	0.8%	6	5.0%	37	31%	0	0.0%	0	0.0%	0	0.0%	0	0.0%	0	0.0%	0	0.0%	20	17%
<i>Southern Region</i>																																				
	3rd	1	0	0.0%	0	0.0%	0	0.0%	0	0.0%	0	0.0%	0	0.0%	0	0.0%	0	0.0%	0	0.0%	0	0.0%	0	0.0%	0	0.0%	0	0.0%	0	0.0%	0	0.0%	0	0.0%	1	100.0%
	4th	58	25	43.1%	5	8.6%	0	0.0%	0	0.0%	0	0.0%	1	1.7%	0	0.0%	1	1.7%	4	6.9%	16	27.6%	0	0.0%	0	0.0%	0	0.0%	2	3.4%	0	0.0%	4	6.9%		
	10th	10	2	20.0%	1	10.0%	0	0.0%	0	0.0%	0	0.0%	0	0.0%	0	0.0%	0	0.0%	0	0.0%	7	70.0%	0	0.0%	0	0.0%	0	0.0%	0	0.0%	0	0.0%	0	0.0%	0	0.0%
	11th	10	6	60.0%	1	10.0%	0	0.0%	0	0.0%	0	0.0%	0	0.0%	0	0.0%	0	0.0%	0	0.0%	1	10.0%	0	0.0%	0	0.0%	0	0.0%	0	0.0%	0	0.0%	2	20.0%		
	12th	4	3	75.0%	0	0.0%	0	0.0%	0	0.0%	0	0.0%	0	0.0%	0	0.0%	0	0.0%	0	0.0%	0	0.0%	0	0.0%	0	0.0%	0	0.0%	0	0.0%	0	0.0%	1	25.0%		
	15th	3	0	0.0%	0	0.0%	0	0.0%	0	0.0%	0	0.0%	1	33.3%	0	0.0%	0	0.0%	0	0.0%	1	33.3%	0	0.0%	0	0.0%	0	0.0%	0	0.0%	0	0.0%	1	33.3%		
	16th	1	0	0.0%	1	100.0%	0	0.0%	0	0.0%	0	0.0%	0	0.0%	0	0.0%	0	0.0%	0	0.0%	0	0.0%	0	0.0%	0	0.0%	0	0.0%	0	0.0%	0	0.0%	0	0.0%		
Southern Total		87	36	41%	8	9%	0	0.0%	0	0.0%	0	0.0%	2	2.3%	0	0.0%	1	1.1%	4	5%	25	29%	0	0.0%	0	0.0%	0	0.0%	0	0.0%	2	2.3%	0	0.0%	9	10%
<i>Western Region</i>																																				
	6th	3	1	33.3%	0	0.0%	0	0.0%	0	0.0%	0	0.0%	0	0.0%	0	0.0%	0	0.0%	0	0.0%	0	0.0%	0	0.0%	0	0.0%	0	0.0%	0	0.0%	0	0.0%	2	67%		
	7th	9	3	33.3%	3	33.3%	0	0.0%	0	0.0%	0	0.0%	0	0.0%	0	0.0%	0	0.0%	1	11.1%	0	0.0%	0	0.0%	0	0.0%	0	0.0%	0	0.0%	0	0.0%	2	22%		
	9th	1	0	0.0%	0	0.0%	0	0.0%	0	0.0%	0	0.0%	0	0.0%	0	0.0%	0	0.0%	0	0.0%	0	0.0%	0	0.0%	0	0.0%	0	0.0%	0	0.0%	1	100%				
	14th	1	0	0.0%	0	0.0%	0	0.0%	1	100.0%	0	0.0%	0	0.0%	0	0.0%	0	0.0%	0	0.0%	0	0.0%	0	0.0%	0	0.0%	0	0.0%	0	0.0%	0	0.0%	0	0.0%		
	21st	20	3	15.0%	4	20.0%	0	0.0%	0	0.0%	0	0.0%	0	0.0%	0	0.0%	0	0.0%	2	10.0%	7	35.0%	0	0.0%	0	0.0%	0	0.0%	0	0.0%	0	0.0%	4	20%		
	22nd	4	0	0.0%	0	0.0%	0	0.0%	0	0.0%	0	0.0%	0	0.0%	0	0.0%	0	0.0%	0	0.0%	0	0.0%	0	0.0%	0	0.0%	0	0.0%	0	0.0%	0	0.0%	4	100%		
Western Total		38	7	18%	7	18.4%	0	0.0%	1	2.6%	0	0.0%	0	0.0%	0	0.0%	0	0.0%	2	5.3%	8	21%	0	0.0%	0	0.0%	0	0.0%	0	0.0%	0	0.0%	0	0.0%	13	34%
Individual RD Totals		430	127	30%	41	10%	17	4.0%	1	0.2%	0	0.0%	13	3.0%	0	0.0%	2	0.5%	26	6%	114	27%	1	0.2%	0	0.0%	0	0.0%	0	0.0%	2	0.5%	1	0.2%	85	20%
Statewide Totals		430	168	39.1%	18	4.2%	15	3.5%	140	32.6%	1	0.2%	85	20%																						

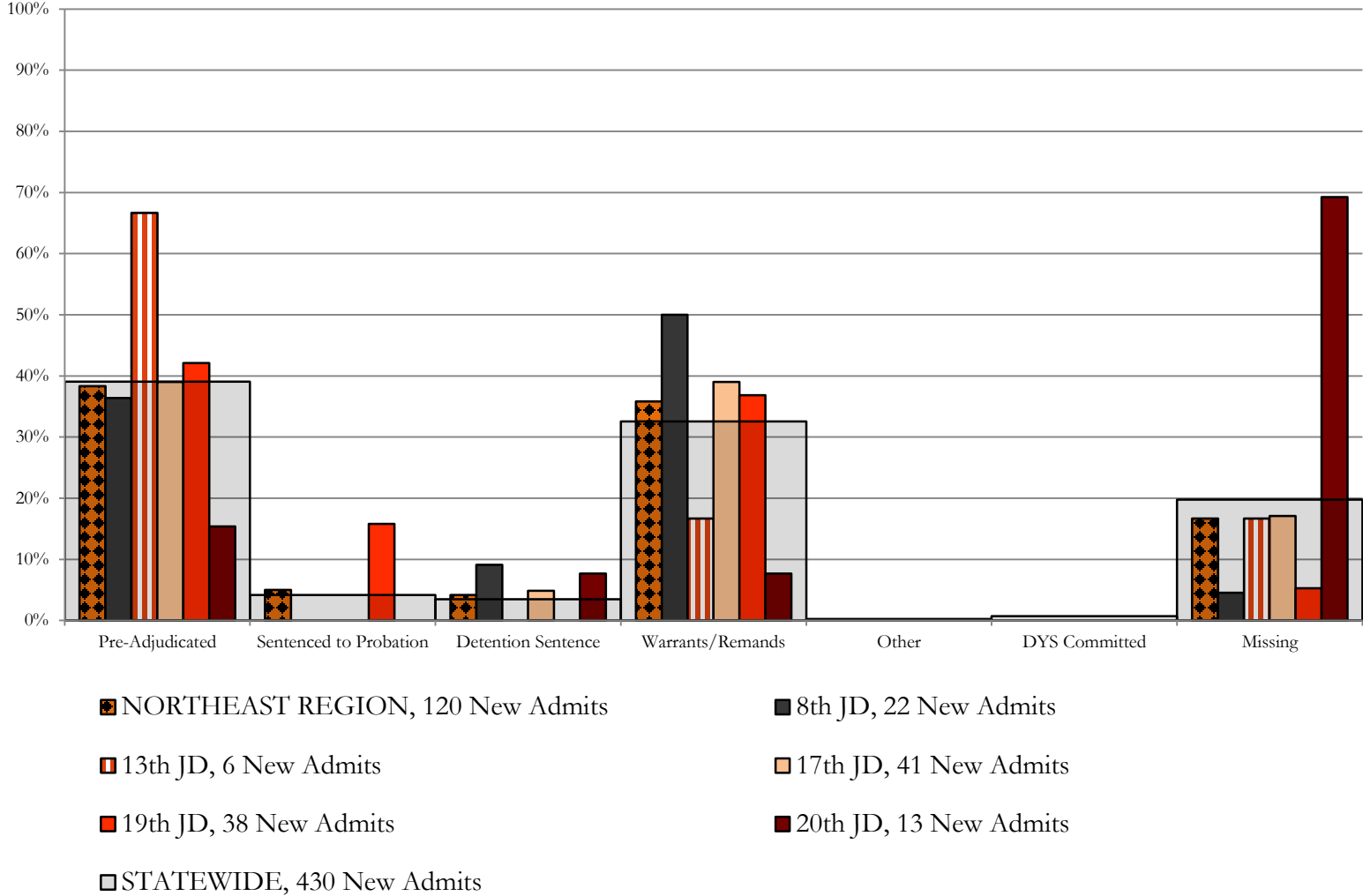
Central Region CYDC Reason Detained by Judicial District August 2018 New Admits



Northeast Region

CYDC Reason Detained by Judicial District

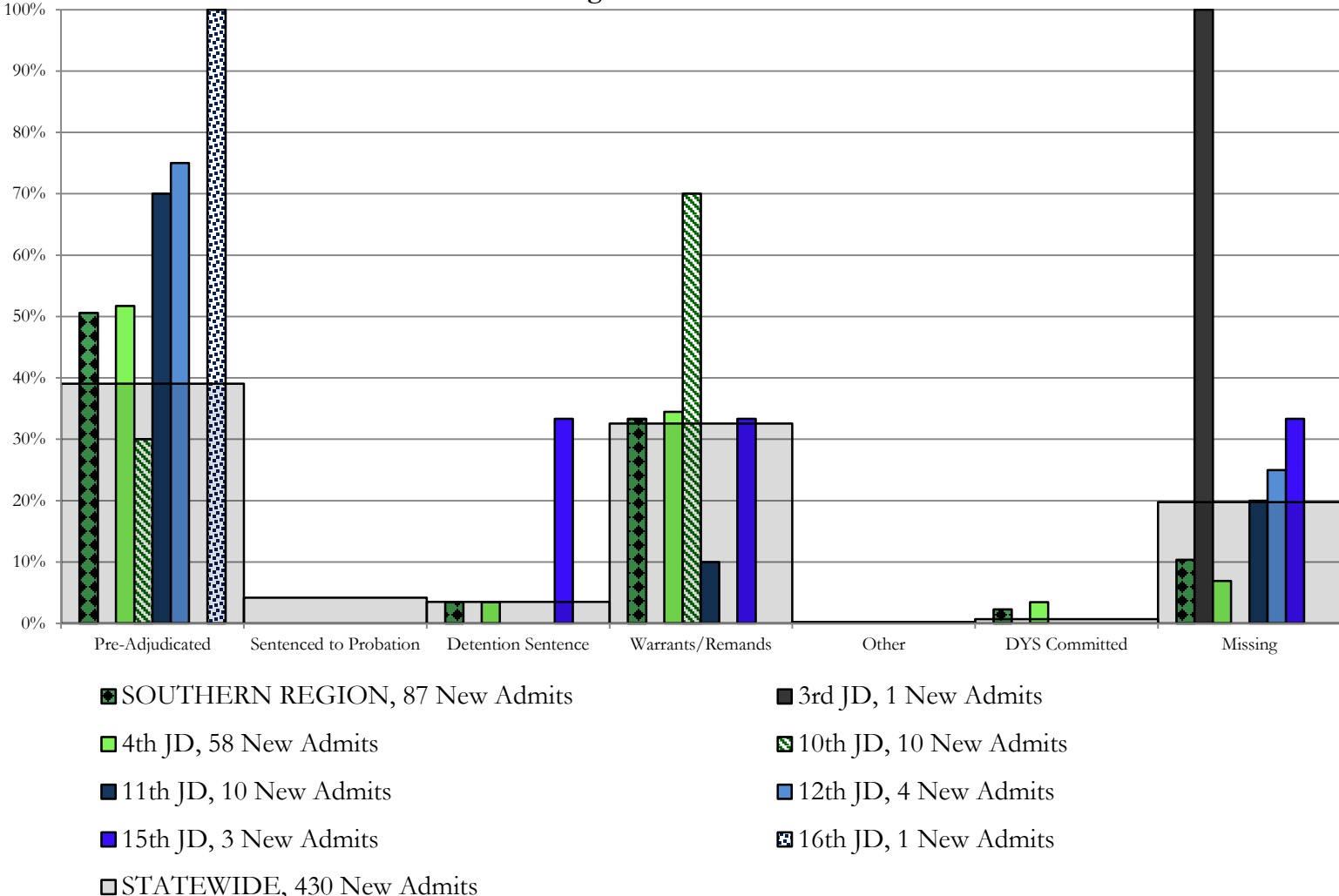
August 2018 New Admits



Southern Region

CYDC Reason Detained by Judicial District

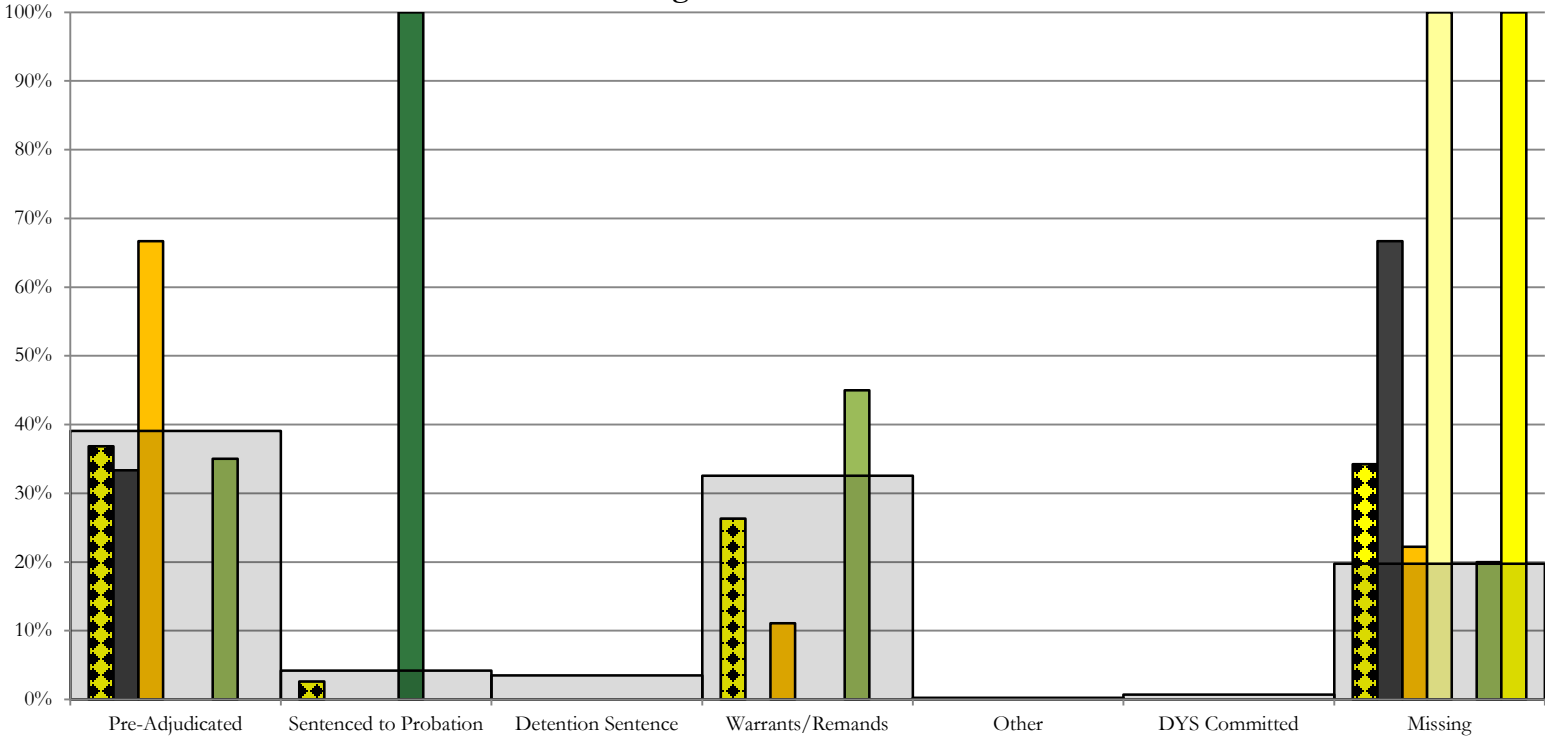
August 2018 New Admits



Western Region

CYDC Reason Detained by Judicial District

August 2018 New Admits



- WESTERN REGION, 38 New Admits**
- 7th JD, 9 New Admits**
- 14th JD, 1 New Admits**
- 22nd JD, 4 New Admits**
- 6th JD, 3 New Admits**
- 9th JD, 1 New Admits**
- 21st JD, 20 New Admits**
- STATEWIDE, 430 New Admits**

August 2018 CYDC Supplemental Report

DYS Detention Maximum Youth Served by Judicial District¹

Region	JD	Detention Capacity	Detention ADP		Maximum Youth Served on a Single Day ^{2,3}			
			August 2018	YTD	August 2018		YTD	
					Number of Youth	% of Detention Capacity	Number of Youth	% of Detention Capacity
<i>Central Region</i>								
	1st	37	21.4	24.7	27	73.0%	33	89.2%
	2nd	64	41.7	41.6	50	78.1%	50	78.1%
	5th	4	1.4	1.1	2	50.0%	2	50.0%
	18th	61	39.8	45.2	49	80.3%	58	95.1%
Central Region		166	104.3	112.6	126	75.9%	130	78.3%
<i>Northeast Region</i>								
	8th	21	9.6	11.2	13	61.9%	18	85.7%
	13th	5	4.1	4.6	6	120.0%	9	180.0%
	17th	30	19.2	21.7	28	93.3%	28	93.3%
	19th	25	16.9	16.2	22	88.0%	22	88.0%
	20th	13	4.5	4.5	9	69.2%	9	69.2%
Northeast Region		94	54.3	58.3	66	70.2%	71	75.5%
<i>Southern Region</i>								
	3rd	2	1.0	1.2	2	100.0%	2	100.0%
	4th	51	45.5	46.8	51	100.0%	52	102.0%
	10th	13	5.0	5.4	11	84.6%	11	84.6%
	11th	8	2.2	2.6	4	50.0%	5	62.5%
	12th	4	0.4	0.7	2	50.0%	2	50.0%
	15th	2	1.8	2.1	3	150.0%	4	200.0%
	16th	3	0.1	0.8	1	33.3%	3	100.0%
Southern Region		83	56.0	59.6	65	78.3%	67	80.7%
<i>Western Region</i>								
	6th	5	2.0	1.4	3	60.0%	3	60.0%
	7th	7	2.8	2.9	5	71.4%	5	71.4%
	9th	6	1.4	1.6	2	33.3%	2	33.3%
	14th	3	0.3	0.2	1	33.3%	1	33.3%
	21st	14	13.0	13.1	17	121.4%	17	121.4%
	22nd	4	0.2	0.6	2	50.0%	2	50.0%
Western Region		39	19.7	19.8	25	64.1%	26	66.7%
<i>Missing JD or Multiple JDs</i>			1.0	1.0				
Statewide		382	235.2	251.2	268	70.2%	284	74.3%

¹ Maximum youth served is the highest number of youth in detention on a single day during the month or fiscal year.

² Regional figures are not the sum of judicial districts, but represent the maximum count on one day for the entire region.

³ State figures are not the sum of regional figures, but represent the maximum count on one day for the entire state.

August 2018 CYDC Supplemental Report

CYDC Community ADP by Judicial District

Region	JD	Committed		Diversion		ICJ		Municipal		Pre-Adjudicated		Sentenced		VCO		Total	
		August	YTD	August	YTD	August	YTD	August	YTD	August	YTD	August	YTD	August	YTD	August	YTD
<i>Central Region</i>																	
	1st	0.0	0.0	0.0	0.0	0.0	0.0	9.7	5.6	135.5	138.6	26.4	24.8	0.0	0.0	171.5	169.1
	2nd	0.0	0.0	0.0	0.0	1.0	0.7	0.0	0.0	130.1	126.1	14.4	14.9	0.0	0.0	145.5	141.7
	5th	0.0	0.0	26.9	26.6	0.0	0.0	0.0	0.0	9.6	8.7	30.0	30.0	0.0	0.0	66.5	65.3
	18th	0.3	0.5	0.0	0.0	0.3	0.1	0.1	0.1	235.4	236.5	27.1	27.4	0.0	0.0	263.3	264.6
Central Total		0.4	0.5	26.9	26.6	1.3	0.8	9.8	5.7	510.6	509.9	97.8	97.1	0.0	0.0	646.8	640.7
<i>Northeast Region</i>																	
	8th	0.0	0.0	3.4	7.7	0.0	0.0	0.0	0.0	36.3	36.5	24.4	21.5	0.0	0.0	64.0	65.7
	13th	0.0	0.0	0.0	0.0	0.0	0.0	2.0	1.9	25.1	22.3	3.2	3.2	3.0	3.0	33.3	30.4
	17th	0.0	0.0	0.0	0.0	0.0	0.0	0.0	0.0	235.1	227.6	69.1	67.2	0.0	0.0	304.2	294.8
	19th	0.5	0.6	1.0	1.1	0.0	0.0	0.0	0.0	55.7	53.9	26.8	25.5	1.0	0.9	84.9	82.0
	20th	1.0	1.0	7.0	6.8	0.0	0.0	0.0	0.0	76.2	71.0	26.1	23.5	3.0	3.0	113.3	105.3
Northeast Total		1.5	1.6	11.4	15.6	0.0	0.0	2.0	1.9	428.4	411.3	149.5	141.0	7.0	6.9	599.7	578.2
<i>Southern Region</i>																	
	3rd	0.0	0.0	0.0	0.0	0.0	0.0	0.0	0.0	6.4	6.5	6.0	5.5	0.0	0.0	12.5	12.1
	4th	0.7	0.6	0.0	0.0	0.0	0.0	29.9	31.2	110.1	110.8	37.8	37.7	0.0	0.0	178.4	180.3
	10th	1.0	1.0	0.0	0.0	1.0	1.0	2.0	2.0	32.0	31.9	10.0	9.0	1.0	1.0	47.1	45.9
	11th	1.0	1.0	0.0	0.0	0.0	0.0	4.0	3.7	24.0	23.4	21.6	20.8	0.0	0.0	50.6	48.9
	12th	0.0	0.0	1.0	1.0	0.0	0.0	3.0	3.0	9.9	10.2	0.0	0.0	0.0	0.0	13.9	14.3
	15th	0.0	0.0	2.0	2.4	0.0	0.0	0.0	0.0	4.5	4.2	6.8	6.5	0.0	0.0	13.3	13.2
	16th	0.0	0.0	0.0	0.0	0.0	0.0	0.0	0.0	9.4	10.1	2.0	2.3	15.0	15.5	26.4	27.9
Southern Total		2.7	2.6	3.0	3.4	1.0	1.0	38.9	39.9	196.3	197.2	84.2	81.9	16.0	16.5	342.1	342.5
<i>Western Region</i>																	
	6th	0.0	0.0	0.0	0.0	0.0	0.0	0.0	0.0	5.9	5.6	0.0	0.0	0.0	0.0	5.9	5.6
	7th	0.0	0.0	6.3	5.6	0.0	0.0	1.0	1.0	13.5	13.3	16.2	15.1	0.0	0.0	37.0	35.1
	9th	0.0	0.0	0.0	0.0	0.0	0.0	1.0	1.0	11.0	10.9	0.0	0.0	0.0	0.0	12.0	11.9
	14th	0.0	0.0	1.0	1.0	0.0	0.0	0.0	0.0	5.0	5.1	0.3	0.7	0.0	0.0	6.3	6.8
	21st	0.0	0.0	0.0	0.0	0.0	0.0	0.0	0.0	55.2	51.9	13.2	13.1	0.0	0.0	68.4	64.9
	22nd	0.0	0.0	0.0	0.0	0.0	0.0	0.0	0.0	5.7	6.5	2.0	2.1	0.0	0.0	7.7	8.6
Western Total		0.0	0.0	7.3	6.6	0.0	0.0	2.0	2.0	96.2	93.2	31.7	31.0	0.0	0.0	137.2	132.8
Statewide Total		4.6	4.7	48.6	52.3	2.3	1.8	52.7	49.4	1231.4	1211.6	363.2	351.0	23.0	23.4	1725.8	1694.1