

July 2018 FY 2018-2019 CYDC JDSAG SUPPLEMENTAL REPORT

Prepared by the Division of Youth Services (DYS)
Data Management and Analysis
August 24, 2018



COLORADO

**Office of Children,
Youth & Families**

Division of Youth Services

July 2018 CYDC Supplemental Report

DYS Commitment ADP & New Commitments by Judicial District

Region	JD ¹	2019 Population Estimates ²	ADP ³		New Commitments		
			July 2018	YTD	July 2018	YTD	YTD Rate ⁴
<i>Central Region</i>							
	1st	55,734	88.8	88.8	4	4	0.7
	2nd	56,489	91.8	91.8	4	4	0.7
	5th	9,445	6.0	6.0	0	0	0.0
	18th	117,328	93.2	93.2	4	4	0.3
Central Total		238,996	279.8	279.8	12	12	0.5
<i>Northeast Region</i>							
	8th	34,282	29.3	29.3	0	0	0.0
	13th	8,510	5.6	5.6	0	0	0.0
	17th	70,426	60.9	60.9	3	3	0.4
	19th	37,897	54.7	54.7	0	0	0.0
	20th	31,849	8.0	8.0	0	0	0.0
Northeast Total		182,964	158.4	158.4	3	3	0.2
<i>Southern Region</i>							
	3rd	1,805	0.0	0.0	0	0	0.0
	4th	81,988	102.3	102.3	4	4	0.5
	10th	18,298	17.7	17.7	0	0	0.0
	11th	7,228	4.9	4.9	0	0	0.0
	12th	5,295	2.7	2.7	0	0	0.0
	15th	2,106	7.2	7.2	1	1	4.7
	16th	2,796	1.0	1.0	0	0	0.0
Southern Total		119,516	135.9	135.9	5	5	0.4
<i>Western Region</i>							
	6th	7,337	5.1	5.1	0	0	0.0
	7th	10,703	11.6	11.6	0	0	0.0
	9th	8,691	6.5	6.5	0	0	0.0
	14th	5,745	2.6	2.6	1	1	1.7
	21st	16,228	33.2	33.2	1	1	0.6
	22nd	3,215	5.1	5.1	0	0	0.0
Western Total		51,919	64.1	64.1	2	2	0.4
Statewide Total		593,395	638.2	638.2	22	22	0.4

¹ JD represents the judicial district in which the client was committed. Regional totals are a sum of their respective judicial districts. Regional totals reported here may differ slightly from those reported in the Monthly Population Report, where region is defined by active caseloads.

² Source: DOLA 2019 Estimates.

³ Due to rounding, totals shown may not be an exact sum of the subtotals.

⁴ Per 10,000 youth in the population.

July 2018 CYDC Supplemental Report

DYS Detention ADP and New Detention Admissions by Judicial District

Region	JD	2019 Population Estimates ¹	ADP		New Admits		YTD New Admit Rate ²
			July 2018	YTD	July 2018	YTD	
<i>Central Region</i>							
	1st	55,734	27.7	27.7	47	47	8.4
	2nd	56,489	42.0	42.0	79	79	14.0
	5th	9,445	0.8	0.8	2	2	2.1
	18th	117,328	50.5	50.5	77	77	6.6
Central Total		238,996	120.9	120.9	205	205	8.6
<i>Northeast Region</i>							
	8th	34,282	12.9	12.9	17	17	5.0
	13th	8,510	5.2	5.2	14	14	16.5
	17th	70,426	24.3	24.3	62	62	8.8
	19th	37,897	15.4	15.4	38	38	10.0
	20th	31,849	4.4	4.4	10	10	3.1
Northeast Total		182,964	62.1	62.1	141	141	7.7
<i>Southern Region</i>							
	3rd	1,805	1.3	1.3	1	1	5.5
	4th	81,988	48.0	48.0	63	63	7.7
	10th	18,298	5.9	5.9	19	19	10.4
	11th	7,228	3.0	3.0	9	9	12.5
	12th	5,295	1.1	1.1	2	2	3.8
	15th	2,106	2.3	2.3	2	2	9.5
	16th	2,796	1.4	1.4	0	0	0.0
Southern Total		119,516	63.1	63.1	96	96	8.0
<i>Western Region</i>							
	6th	7,337	0.8	0.8	4	4	5.5
	7th	10,703	3.0	3.0	6	6	5.6
	9th	8,691	1.8	1.8	3	3	3.5
	14th	5,745	0.1	0.1	0	0	0.0
	21st	16,228	13.3	13.3	21	21	12.9
	22nd	3,215	1.0	1.0	1	1	3.1
Western Total		51,919	20.0	20.0	35	35	6.7
<i>Missing JD or Multiple JDs</i>			1.0	1.0			
Statewide Total		593,395	267.1	267.1	477	477	8.0

¹ Source: DOLA 2019 Estimates.

² Per 10,000 youth in the population.

July 2018 CYDC Supplemental Report

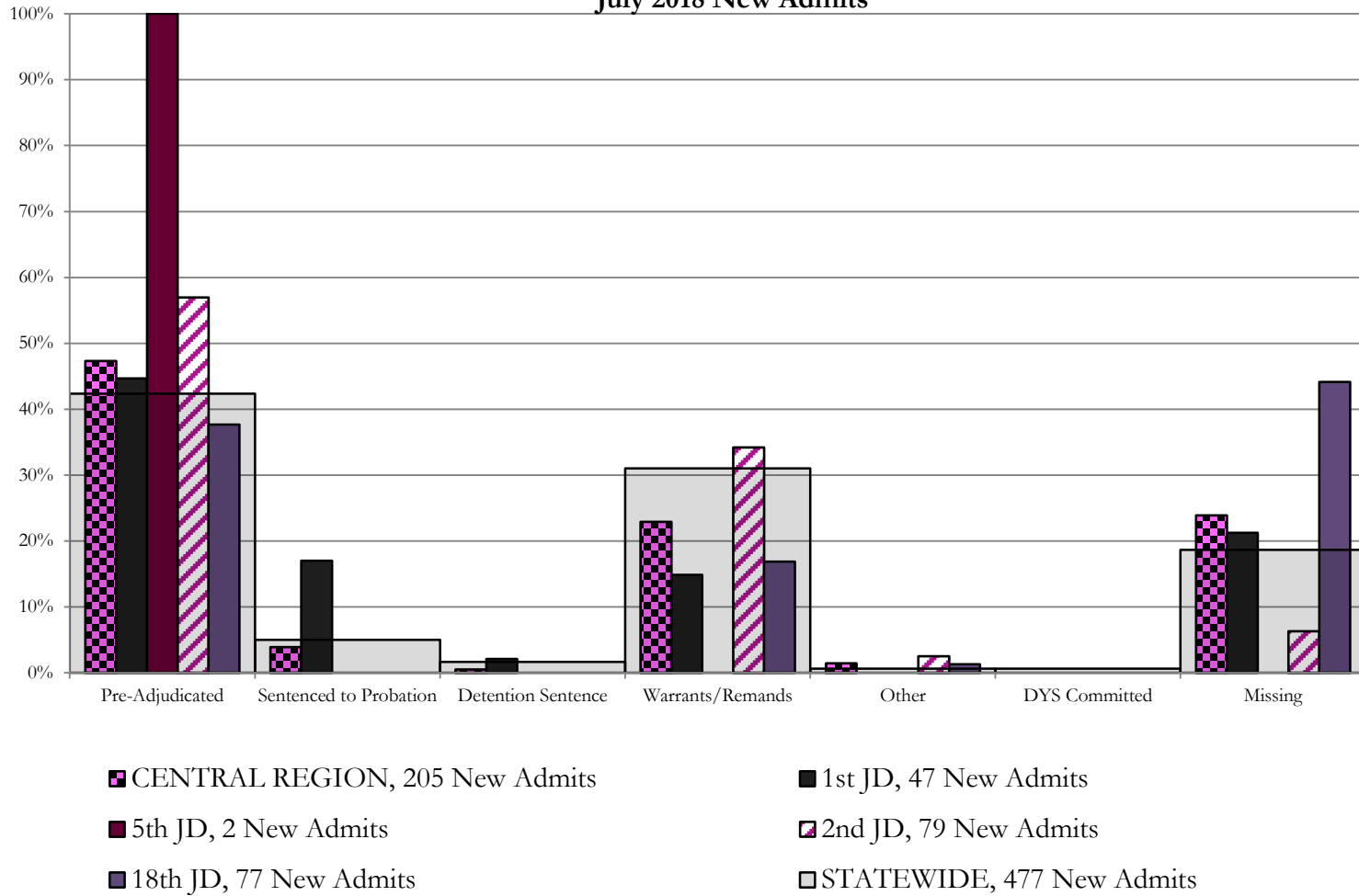
DYS Detention LOS by Judicial District				
Region	JD	YTD Detention Releases	YTD LOS (days)	LOS (days) Compared to State AVG
<i>Central Region</i>				
	1st	45	22.1	3.2
	2nd	64	10.7	-8.2
	5th	4	17.7	-1.2
	18th	82	18.6	-0.3
Central Total		195	16.8	-2.1
<i>Northeast Region</i>				
	8th	26	20.0	1.1
	13th	13	7.6	-11.3
	17th	58	18.1	-0.8
	19th	39	11.5	-7.4
	20th	9	12.5	-6.5
Northeast Total		145	15.4	-3.5
<i>Southern Region</i>				
	3rd	1	7.3	-11.6
	4th	64	33.4	14.5
	10th	16	4.0	-14.9
	11th	10	9.8	-9.2
	12th	3	18.3	-0.6
	15th	3	24.1	5.2
	16th	3	30.8	11.9
Southern Total		100	25.3	6.3
<i>Western Region</i>				
	6th	1	8.3	-10.6
	7th	6	24.1	5.2
	9th	3	9.1	-9.8
	14th	0	0.0	-18.9
	21st	17	23.5	4.6
	22nd	3	21.3	2.4
Western Total		30	21.5	2.5
Statewide Total		468	18.9	-

July 2018 CYDC JDSAG Supplemental Report

CYDC Reason Detained (RD) by Judicial District

Region	JD	Pre-Adjudicated				Sentenced to Probation				Detention Sentence								Warrants/Remands				Other				DYS Committed		Missing										
		Felony		Misdemeanor		Technical Violator		New Charges		Probation Sentence		Detention Sentence		Valid Court Order (VCO) Truancy		Awaiting DSS (Social Services) Placement		Failure to Appear (FTA)		Failure to Comply (FTC)		Interstate Compact on Juveniles (ICJ) Hold		Immigration Hold		No Bond Hold		Out-of-Country Warrant		Institutional		Parole		Missing				
		#	%	#	%	#	%	#	%	#	%	#	%	#	%	#	%	#	%	#	%	#	%	#	%	#	%	#	%	#	%	#	%	#	%			
Central Region																																						
	1st	47	19	40.4%	2	4.3%	8	17.0%	0	0.0%	0	0.0%	1	2.1%	0	0.0%	0	0.0%	2	4.3%	5	10.6%	0	0.0%	0	0.0%	0	0.0%	0	0.0%	0	0.0%	0	0.0%	10	21.3%		
	2nd	79	37	46.8%	8	10.1%	0	0.0%	0	0.0%	0	0.0%	0	0.0%	0	0.0%	3	3.8%	24	30.4%	2	2.5%	0	0.0%	0	0.0%	0	0.0%	0	0.0%	0	0.0%	0	0.0%	5	6.3%		
	5th	2	2	100.0%	0	0.0%	0	0.0%	0	0.0%	0	0.0%	0	0.0%	0	0.0%	0	0.0%	0	0.0%	0	0.0%	0	0.0%	0	0.0%	0	0.0%	0	0.0%	0	0.0%	0	0.0%	0	0.0%		
	18th	77	18	23.4%	11	14.3%	0	0.0%	0	0.0%	0	0.0%	0	0.0%	0	0.0%	2	2.6%	11	14.3%	1	1.3%	0	0.0%	0	0.0%	0	0.0%	0	0.0%	0	0.0%	0	0.0%	34	44.2%		
Central Total		205	76	37%	21	10%	8	3.9%	0	0.0%	0	0.0%	1	0.5%	0	0.0%	0	0.0%	7	3%	40	20%	3	1.5%	0	0.0%	0	0.0%	0	0.0%	0	0.0%	0	0.0%	49	23.9%		
Northeast Region																																						
	8th	17	4	23.5%	3	17.6%	0	0.0%	0	0.0%	0	0.0%	0	0.0%	0	0.0%	0	0.0%	9	52.9%	0	0.0%	0	0.0%	0	0.0%	0	0.0%	0	0.0%	0	0.0%	0	0.0%	1	5.9%		
	13th	14	3	21.4%	3	21.4%	0	0.0%	0	0.0%	0	0.0%	0	0.0%	0	0.0%	0	0.0%	4	28.6%	0	0.0%	0	0.0%	0	0.0%	0	0.0%	0	0.0%	0	0.0%	0	0.0%	4	28.6%		
	17th	62	13	21.0%	2	3.2%	0	0.0%	0	0.0%	0	0.0%	2	3.2%	0	0.0%	0	0.0%	4	6.5%	25	40.3%	0	0.0%	0	0.0%	0	0.0%	0	0.0%	1	1.6%	15	24.2%				
	19th	38	11	28.9%	6	15.8%	10	26.3%	0	0.0%	0	0.0%	0	0.0%	0	0.0%	2	5.3%	9	23.7%	0	0.0%	0	0.0%	0	0.0%	0	0.0%	0	0.0%	0	0.0%	0	0.0%	0	0.0%		
	20th	10	2	20.0%	0	0.0%	1	10.0%	0	0.0%	0	0.0%	4	40.0%	0	0.0%	2	20.0%	0	0.0%	0	0.0%	0	0.0%	0	0.0%	0	0.0%	0	0.0%	0	0.0%	0	0.0%	1	10.0%		
Northeast Total		141	33	23%	14	10%	11	7.8%	0	0.0%	0	0.0%	6	4.3%	0	0.0%	2	1.4%	6	4.3%	47	33%	0	0.0%	0	0.0%	0	0.0%	0	0.0%	0	0.0%	1	0.7%	21	15%		
Southern Region																																						
	3rd	1	0	0.0%	0	0.0%	0	0.0%	0	0.0%	0	0.0%	0	0.0%	0	0.0%	0	0.0%	0	0.0%	0	0.0%	0	0.0%	0	0.0%	0	0.0%	0	0.0%	0	0.0%	0	0.0%	1	100.0%		
	4th	63	19	30.2%	7	11.1%	0	0.0%	5	7.9%	0	0.0%	1	1.6%	0	0.0%	0	0.0%	10	15.9%	17	27.0%	0	0.0%	0	0.0%	0	0.0%	2	3.2%	0	0.0%	2	3.2%	0	0.0%		
	10th	19	10	52.6%	2	10.5%	0	0.0%	0	0.0%	0	0.0%	0	0.0%	0	0.0%	3	15.8%	4	21.1%	0	0.0%	0	0.0%	0	0.0%	0	0.0%	0	0.0%	0	0.0%	0	0.0%	0	0.0%		
	11th	9	3	33.3%	1	11.1%	0	0.0%	0	0.0%	0	0.0%	0	0.0%	0	0.0%	0	0.0%	0	0.0%	0	0.0%	0	0.0%	0	0.0%	0	0.0%	0	0.0%	0	0.0%	5	55.6%				
	12th	2	1	50.0%	0	0.0%	0	0.0%	0	0.0%	0	0.0%	0	0.0%	0	0.0%	0	0.0%	1	50.0%	0	0.0%	0	0.0%	0	0.0%	0	0.0%	0	0.0%	0	0.0%	0	0.0%	0	0.0%		
	15th	2	0	0.0%	0	0.0%	0	0.0%	0	0.0%	0	0.0%	0	0.0%	0	0.0%	1	50.0%	1	50.0%	0	0.0%	0	0.0%	0	0.0%	0	0.0%	0	0.0%	0	0.0%	0	0.0%	0	0.0%		
	16th	0	0	0.0%	0	0.0%	0	0.0%	0	0.0%	0	0.0%	0	0.0%	0	0.0%	0	0.0%	0	0.0%	0	0.0%	0	0.0%	0	0.0%	0	0.0%	0	0.0%	0	0.0%	0	0.0%	0	0.0%		
Southern Total		96	33	34%	10	10%	0	0.0%	5	5.2%	0	0.0%	1	1.0%	0	0.0%	0	0.0%	14	15%	23	24%	0	0.0%	0	0.0%	0	0.0%	0	0.0%	2	2.1%	0	0.0%	8	8%		
Western Region																																						
	6th	4	0	0.0%	0	0.0%	0	0.0%	0	0.0%	0	0.0%	0	0.0%	0	0.0%	0	0.0%	1	25.0%	0	0.0%	0	0.0%	0	0.0%	0	0.0%	0	0.0%	0	0.0%	0	0.0%	3	75.0%		
	7th	6	2	33.3%	2	33.3%	0	0.0%	0	0.0%	0	0.0%	0	0.0%	0	0.0%	0	0.0%	0	0.0%	0	0.0%	0	0.0%	0	0.0%	0	0.0%	0	0.0%	0	0.0%	0	0.0%	2	33.3%		
	9th	3	0	0.0%	2	66.7%	0	0.0%	0	0.0%	0	0.0%	0	0.0%	0	0.0%	0	0.0%	0	0.0%	0	0.0%	0	0.0%	0	0.0%	0	0.0%	0	0.0%	0	0.0%	1	33.3%				
	14th	0	0	0.0%	0	0.0%	0	0.0%	0	0.0%	0	0.0%	0	0.0%	0	0.0%	0	0.0%	0	0.0%	0	0.0%	0	0.0%	0	0.0%	0	0.0%	0	0.0%	0	0.0%	0	0.0%	0	0.0%		
	21st	21	5	23.8%	3	14.3%	0	0.0%	0	0.0%	0	0.0%	0	0.0%	0	0.0%	3	14.3%	7	33.3%	0	0.0%	0	0.0%	0	0.0%	0	0.0%	0	0.0%	0	0.0%	0	0.0%	3	14.3%		
	22nd	1	0	0.0%	1	100.0%	0	0.0%	0	0.0%	0	0.0%	0	0.0%	0	0.0%	0	0.0%	0	0.0%	0	0.0%	0	0.0%	0	0.0%	0	0.0%	0	0.0%	0	0.0%	0	0.0%	0	0.0%		
Western Total		35	7	20%	8	22.9%	0	0.0%	0	0.0%	0	0.0%	0	0.0%	0	0.0%	0	0.0%	3	8.6%	8	23%	0	0.0%	0	0.0%	0	0.0%	0	0.0%	0	0.0%	0	0.0%	9	26%		
Individual RD Totals		477	149	31%	53	11%	19	4.0%	5	1.0%	0	0.0%	8	1.7%	0	0.0%	0	0.0%	30	6%	118	25%	3	0.6%	0	0.0%	0	0.0%	0	0.0%	0	0.0%	2	0.4%	1	0.2%	89	19%
Statewide Totals		477	202	42.3%	24	5.0%	8	1.7%	0	0.0%	0	0.0%	8	1.7%	0	0.0%	0	0.0%	148	31.0%	3	0.6%	0	0.0%	0	0.0%	0	0.0%	0	0.0%	3	0.6%	1	0.2%	89	19%		

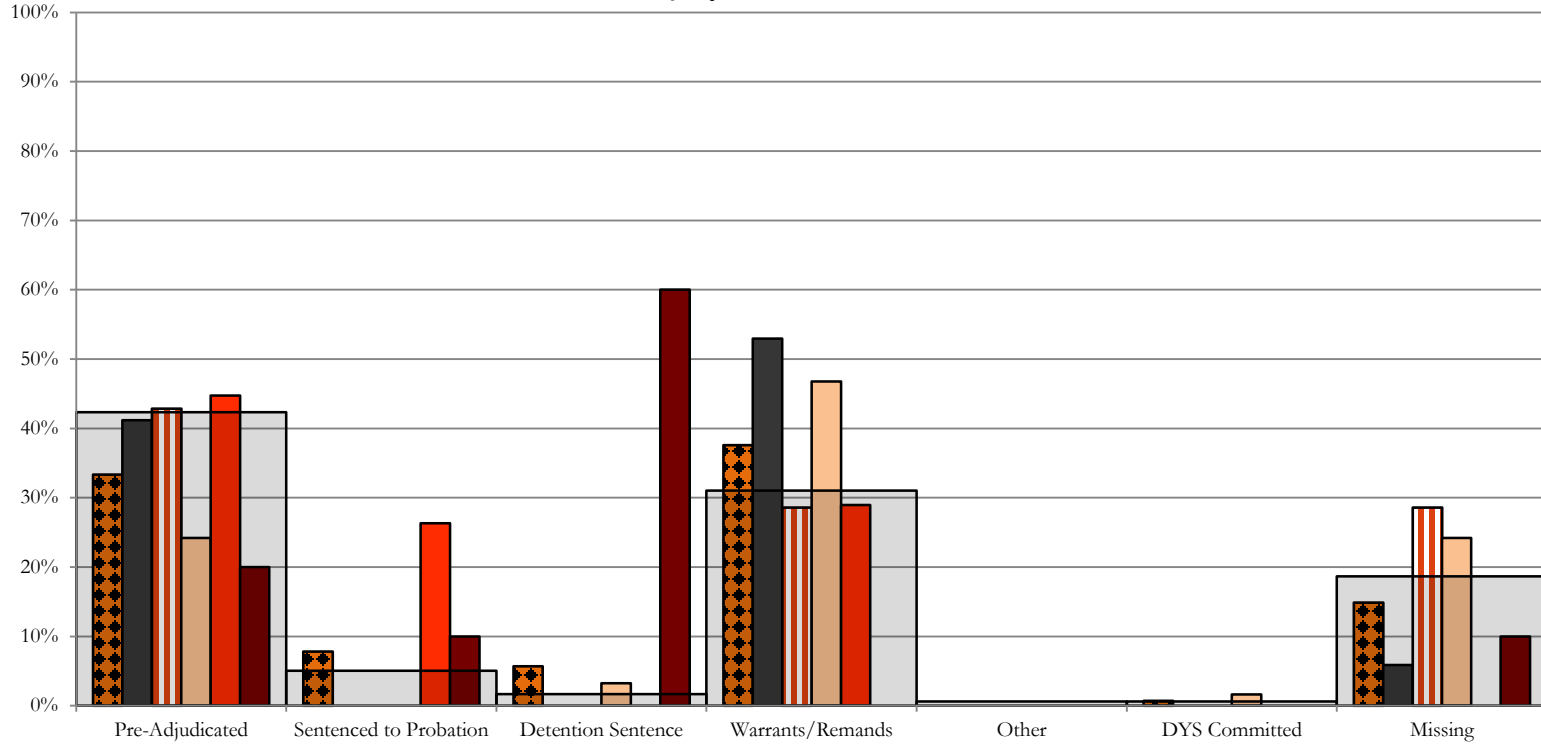
Central Region CYDC Reason Detained by Judicial District July 2018 New Admits



Northeast Region

CYDC Reason Detained by Judicial District

July 2018 New Admits



■ NORTHEAST REGION, 141 New Admits

■ 8th JD, 17 New Admits

■ 13th JD, 14 New Admits

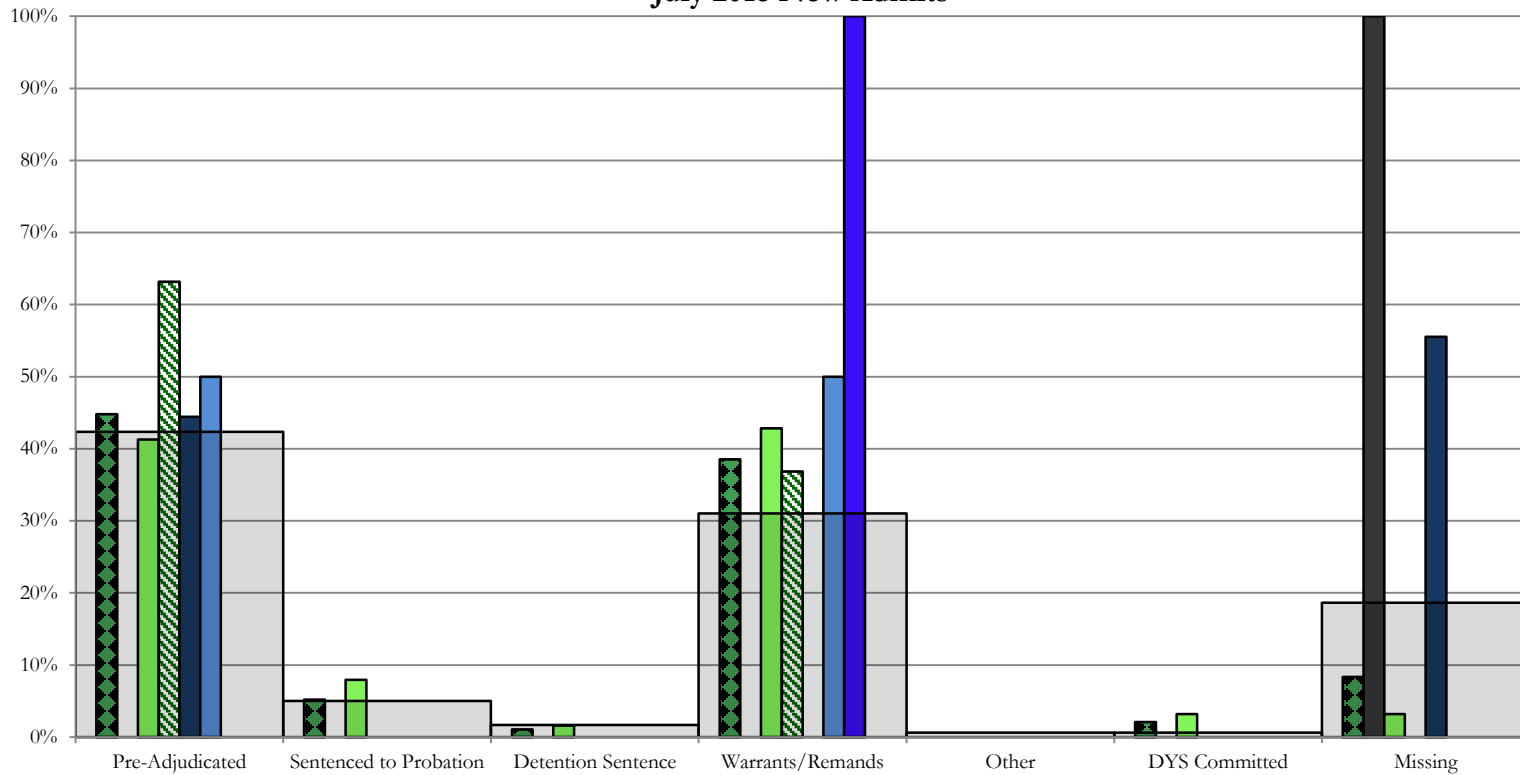
■ 17th JD, 62 New Admits

■ 19th JD, 38 New Admits

■ 20th JD, 10 New Admits

■ STATEWIDE, 477 New Admits

Southern Region CYDC Reason Detained by Judicial District July 2018 New Admits



■ SOUTHERN REGION, 96 New Admits

■ 4th JD, 63 New Admits

■ 11th JD, 9 New Admits

■ 15th JD, 2 New Admits

■ STATEWIDE, 477 New Admits

■ 3rd JD, 1 New Admits

■ 10th JD, 19 New Admits

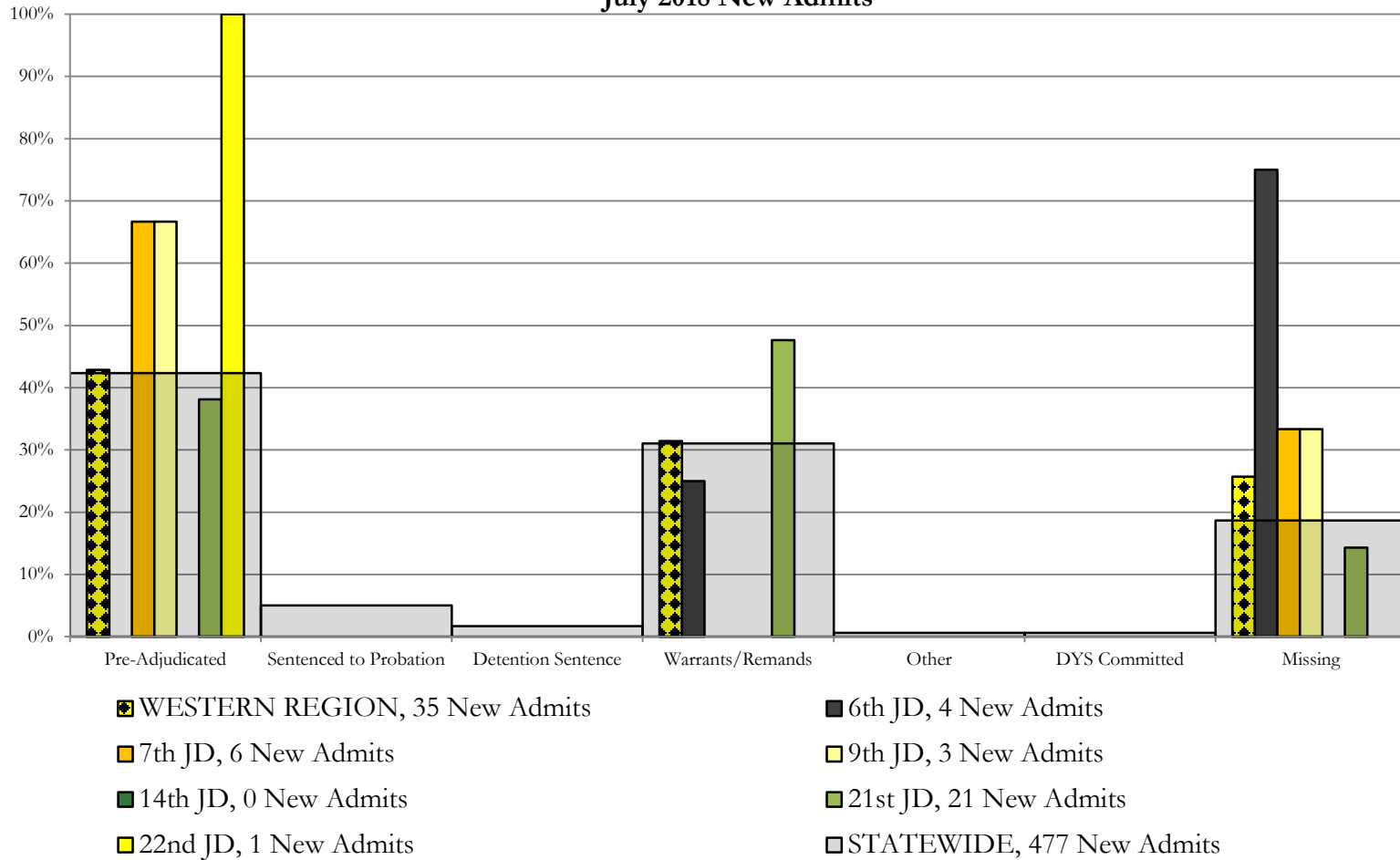
■ 12th JD, 2 New Admits

■ 16th JD, 0 New Admits

Western Region

CYDC Reason Detained by Judicial District

July 2018 New Admits



July 2018 CYDC Supplemental Report

DYS Detention Maximum Youth Served by Judicial District¹

Region	JD	Detention Capacity	Detention ADP		Maximum Youth Served on a Single Day ^{2,3}			
			July 2018	YTD	July 2018		YTD	
					Number of Youth	% of Detention Capacity	Number of Youth	% of Detention Capacity
<i>Central Region</i>								
	1st	37	27.7	27.7	33	89.2%	33	89.2%
	2nd	64	42.0	42.0	51	79.7%	51	79.7%
	5th	4	0.8	0.8	2	50.0%	2	50.0%
	18th	61	50.5	50.5	58	95.1%	58	95.1%
Central Region		166	120.9	120.9	130	78.3%	130	78.3%
<i>Northeast Region</i>								
	8th	21	12.9	12.9	18	85.7%	18	85.7%
	13th	5	5.2	5.2	9	180.0%	9	180.0%
	17th	30	24.3	24.3	28	93.3%	28	93.3%
	19th	25	15.4	15.4	21	84.0%	21	84.0%
	20th	13	4.4	4.4	7	53.8%	7	53.8%
Northeast Region		94	62.1	62.1	70	74.5%	70	74.5%
<i>Southern Region</i>								
	3rd	2	1.3	1.3	2	100.0%	2	100.0%
	4th	51	48.0	48.0	52	102.0%	52	102.0%
	10th	13	5.9	5.9	9	69.2%	9	69.2%
	11th	8	3.0	3.0	5	62.5%	5	62.5%
	12th	4	1.1	1.1	2	50.0%	2	50.0%
	15th	2	2.3	2.3	4	200.0%	4	200.0%
	16th	3	1.4	1.4	3	100.0%	3	100.0%
Southern Region		83	63.1	63.1	67	80.7%	67	80.7%
<i>Western Region</i>								
	6th	5	0.8	0.8	3	60.0%	3	60.0%
	7th	7	3.0	3.0	5	71.4%	5	71.4%
	9th	6	1.8	1.8	2	33.3%	2	33.3%
	14th	3	0.1	0.1	1	33.3%	1	33.3%
	21st	14	13.3	13.3	17	121.4%	17	121.4%
	22nd	4	1.0	1.0	2	50.0%	2	50.0%
Western Region		39	20.0	20.0	26	66.7%	26	66.7%
<i>Missing JD or Multiple JDs</i>			1.0	1.0				
Statewide		382	267.1	267.1	284	74.3%	284	74.3%

¹ Maximum youth served is the highest number of youth in detention on a single day during the month or fiscal year.

² Regional figures are not the sum of judicial districts, but represent the maximum count on one day for the entire region.

³ State figures are not the sum of regional figures, but represent the maximum count on one day for the entire state.

July 2018 CYDC Supplemental Report

CYDC Community ADP by Judicial District

Region	JD	Committed		Diversion		ICJ		Municipal		Pre-Adjudicated		Sentenced		VCO		Total	
		July	YTD	July	YTD	July	YTD	July	YTD	July	YTD	July	YTD	July	YTD	July	YTD
<i>Central Region</i>																	
	1st	0.0	0.0	0.0	0.0	0.0	0.0	1.5	1.5	139.2	139.2	22.4	22.4	0.0	0.0	163.1	163.1
	2nd	0.0	0.0	0.0	0.0	0.4	0.4	0.0	0.0	122.4	122.4	14.8	14.8	0.0	0.0	137.6	137.6
	5th	0.0	0.0	26.3	26.3	0.0	0.0	0.0	0.0	7.8	7.8	29.0	29.0	0.0	0.0	63.1	63.1
	18th	0.7	0.7	0.0	0.0	0.0	0.0	0.0	0.0	238.5	238.5	26.7	26.7	0.0	0.0	265.9	265.9
Central Total		0.7	0.7	26.3	26.3	0.4	0.4	1.5	1.5	508.0	508.0	92.9	92.9	0.0	0.0	629.8	629.8
<i>Northeast Region</i>																	
	8th	0.0	0.0	12.0	12.0	0.0	0.0	0.0	0.0	40.0	40.0	19.6	19.6	0.0	0.0	71.7	71.7
	13th	0.0	0.0	0.0	0.0	0.0	0.0	1.7	1.7	20.2	20.2	6.9	6.9	3.0	3.0	31.8	31.8
	17th	0.0	0.0	0.0	0.0	0.0	0.0	0.0	0.0	221.2	221.2	65.3	65.3	0.0	0.0	286.5	286.5
	19th	0.6	0.6	1.2	1.2	0.0	0.0	0.0	0.0	55.2	55.2	22.2	22.2	0.9	0.9	80.0	80.0
	20th	1.0	1.0	6.7	6.7	0.0	0.0	0.0	0.0	65.7	65.7	21.0	21.0	3.0	3.0	97.4	97.4
Northeast Total		1.6	1.6	19.9	19.9	0.0	0.0	1.7	1.7	402.3	402.3	135.0	135.0	6.9	6.9	567.3	567.3
<i>Southern Region</i>																	
	3rd	0.0	0.0	0.0	0.0	0.0	0.0	0.0	0.0	6.6	6.6	5.0	5.0	0.0	0.0	11.6	11.6
	4th	0.4	0.4	0.0	0.0	0.0	0.0	32.9	32.9	122.6	122.6	38.7	38.7	0.0	0.0	194.7	194.7
	10th	1.0	1.0	0.0	0.0	1.0	1.0	2.0	2.0	31.4	31.4	7.5	7.5	1.0	1.0	43.9	43.9
	11th	1.0	1.0	0.0	0.0	0.0	0.0	3.0	3.0	22.8	22.8	20.0	20.0	0.0	0.0	46.8	46.8
	12th	0.0	0.0	1.0	1.0	0.0	0.0	3.0	3.0	10.6	10.6	0.0	0.0	0.0	0.0	14.6	14.6
	15th	0.0	0.0	2.8	2.8	0.0	0.0	0.0	0.0	4.0	4.0	7.0	7.0	16.0	16.0	29.8	29.8
	16th	0.0	0.0	0.0	0.0	0.0	0.0	0.0	0.0	10.8	10.8	2.5	2.5	#REF!	#REF!	#REF!	#REF!
Southern Total		2.4	2.4	3.8	3.8	1.0	1.0	41.0	41.0	208.9	208.9	80.8	80.8	#REF!	#REF!	#REF!	#REF!
<i>Western Region</i>																	
	6th	0.0	0.0	0.0	0.0	0.0	0.0	0.0	0.0	5.3	5.3	0.0	0.0	0.0	0.0	5.3	5.3
	7th	0.0	0.0	5.0	5.0	0.0	0.0	1.0	1.0	13.1	13.1	14.0	14.0	0.0	0.0	33.1	33.1
	9th	0.0	0.0	0.0	0.0	0.0	0.0	1.0	1.0	14.4	14.4	0.0	0.0	0.0	0.0	15.5	15.5
	14th	0.0	0.0	1.0	1.0	0.0	0.0	0.0	0.0	5.7	5.7	1.1	1.1	0.0	0.0	7.7	7.7
	21st	0.0	0.0	0.0	0.0	0.0	0.0	0.0	0.0	48.3	48.3	12.9	12.9	0.0	0.0	61.2	61.2
	22nd	0.0	0.0	0.0	0.0	0.0	0.0	0.0	0.0	7.3	7.3	2.2	2.2	0.0	0.0	9.4	9.4
Western Total		0.0	0.0	6.0	6.0	0.0	0.0	2.0	2.0	94.1	94.1	30.2	30.2	0.0	0.0	132.3	132.3
Statewide Total		4.8	4.8	55.9	55.9	1.4	1.4	46.2	46.2	1213.2	1213.2	338.9	338.9	#REF!	#REF!	#REF!	#REF!