

June 2018 FY 2017-2018 CYDC JDSAG SUPPLEMENTAL REPORT

Prepared by the Division of Youth Services (DYS)
Data Management & Analysis
July 26, 2018



COLORADO

**Office of Children,
Youth & Families**

Division of Youth Services

June 2018 CYDC Supplemental Report

DYS Commitment ADP & New Commitments by Judicial District

Region	JD ¹	2018 Population Estimates ²	ADP ³		New Commitments		
			June 2018	YTD	June 2018	YTD	YTD Rate ⁴
<i>Central Region</i>							
	1st	56,139	88.9	82.3	2	52	9.3
	2nd	65,275	93.5	96.3	7	57	8.7
	5th	10,694	5.2	7.3	0	2	1.9
	18th	122,766	93.3	78.1	4	60	4.9
Central Total		254,874	280.9	264.0	13	171	6.7
<i>Northeast Region</i>							
	8th	34,025	33.3	38.4	0	20	5.9
	13th	8,531	6.6	7.8	1	4	4.7
	17th	73,588	63.0	63.2	2	32	4.3
	19th	37,441	57.1	57.3	5	37	9.9
	20th	33,056	7.1	8.4	0	2	0.6
Northeast Total		186,641	167.1	175.2	8	95	5.1
<i>Southern Region</i>							
	3rd	1,785	0.0	0.4	0	0	0.0
	4th	83,158	102.8	97.2	4	62	7.5
	10th	18,165	21.6	29.8	0	9	5.0
	11th	7,111	5.9	6.1	0	3	4.2
	12th	5,276	3.0	4.5	0	1	1.9
	15th	2,117	7.4	6.1	2	8	37.8
	16th	2,827	1.0	0.3	0	1	3.5
Southern Total		120,439	141.7	144.3	6	84	7.0
<i>Western Region</i>							
	6th	6,710	5.2	7.5	1	5	7.5
	7th	10,675	11.5	8.6	3	8	7.5
	9th	9,607	5.0	6.1	0	2	2.1
	14th	5,587	1.9	2.1	0	1	1.8
	21st	16,016	32.6	33.7	3	25	15.6
	22nd	3,144	6.3	5.4	0	5	15.9
Western Total		51,739	62.5	63.4	7	46	8.9
Statewide Total		613,693	653.3	646.8	34	396	6.5

¹ JD represents the judicial district in which the client was committed. Regional totals are a sum of their respective judicial districts. Regional totals reported here may differ slightly from those reported in the Monthly Population Report, where region is defined by active caseloads.

² Source: DOLA 2018 Estimates.

³ Due to rounding, totals shown may not be an exact sum of the subtotals.

⁴ Per 10,000 youth in the population.

June 2018 CYDC Supplemental Report

DYS Detention ADP and New Detention Admissions by Judicial District

Region	JD	2018 Population Estimates ¹	ADP		New Admits		YTD New Admit Rate ²
			June 2018	YTD	June 2018	YTD	
<i>Central Region</i>							
	1st	56,139	26.5	28.7	48	636	113.3
	2nd	65,275	35.0	40.0	60	829	127.0
	5th	10,694	2.3	1.4	3	34	31.8
	18th	122,766	41.9	41.6	88	1,029	83.8
Central Total		254,874	105.6	111.8	199	2,528	99.2
<i>Northeast Region</i>							
	8th	34,025	16.1	11.3	30	281	82.6
	13th	8,531	4.0	4.4	6	76	89.1
	17th	73,588	21.5	22.5	38	515	70.0
	19th	37,441	18.3	14.6	52	424	113.2
	20th	33,056	7.3	6.5	12	141	42.7
Northeast Total		186,641	67.1	59.3	138	1,437	77.0
<i>Southern Region</i>							
	3rd	1,785	1.2	0.9	0	24	134.5
	4th	83,158	46.8	45.9	64	727	87.4
	10th	18,165	6.8	10.5	14	236	129.9
	11th	7,111	1.5	2.6	6	92	129.4
	12th	5,276	2.2	1.9	4	38	72.0
	15th	2,117	2.0	1.3	1	19	89.7
	16th	2,827	2.5	1.6	4	34	120.3
Southern Total		120,439	62.8	64.7	93	1,170	97.1
<i>Western Region</i>							
	6th	6,710	1.3	2.6	2	42	62.6
	7th	10,675	3.0	3.2	2	65	60.9
	9th	9,607	2.8	2.9	5	53	55.2
	14th	5,587	1.0	1.0	0	18	32.2
	21st	16,016	14.6	13.3	15	249	155.5
	22nd	3,144	1.3	2.4	4	29	92.2
Western Total		51,739	23.8	25.6	28	456	88.1
<i>Missing JD or Multiple JDs</i>			<i>0.4</i>	<i>1.4</i>			
Statewide Total		613,693	259.9	262.8	458	5,591	91.1

¹ Source: DOLA 2018 Estimates.

² Per 10,000 youth in the population.

June 2018 CYDC Supplemental Report

DYS Detention LOS by Judicial District				
Region	JD	YTD Detention Releases	YTD LOS (days)	LOS (days) Compared to State AVG
<i>Central Region</i>				
	1st	632	15.7	-1.0
	2nd	834	16.6	0.0
	5th	32	14.2	-2.4
	18th	990	14.4	-2.2
Central Total		2,488	15.5	-1.2
<i>Northeast Region</i>				
	8th	275	14.4	-2.3
	13th	75	22.7	6.1
	17th	511	15.1	-1.5
	19th	424	10.8	-5.8
	20th	146	16.1	-0.5
Northeast Total		1,431	14.2	-2.4
<i>Southern Region</i>				
	3rd	26	7.6	-9.1
	4th	706	21.6	4.9
	10th	244	14.6	-2.1
	11th	95	9.0	-7.6
	12th	38	17.5	0.9
	15th	18	27.5	10.9
	16th	34	15.0	-1.6
Southern Total		1,161	18.5	1.9
<i>Western Region</i>				
	6th	47	22.8	6.2
	7th	64	16.7	0.1
	9th	53	17.9	1.3
	14th	17	14.9	-1.8
	21st	243	16.8	0.2
	22nd	29	29.8	13.2
Western Total		453	18.3	1.7
Statewide Total		5,583	16.6	-

June 2018 CYDC Supplemental Report

YTD DYS Detention ADP & Ethnicity by Judicial District

Region	JD	Anglo-American		African-American		Hispanic / Latino		Native-American		Asian-American		Other		TOTAL	
		ADP	%	ADP	%	ADP	%	ADP	%	ADP	%	ADP	%	ADP	%
Central															
	1st	13.6	47.3%	2.2	7.8%	11.1	38.7%	1.0	3.3%	0.2	0.8%	0.6	2.0%	28.7	100%
	2nd	4.5	11.3%	18.6	46.6%	15.9	39.7%	0.2	0.5%	0.1	0.2%	0.7	1.8%	40.0	100%
	5th	0.6	41.5%	0.0	0.0%	0.8	56.2%	0.0	0.0%	0.0	2.3%	0.0	0.0%	1.4	100%
	18th	14.5	34.9%	16.9	40.6%	8.7	20.8%	0.5	1.1%	0.4	1.0%	0.7	1.6%	41.6	100%
Central Total		33.2	33.8%	37.7	23.7%	36.5	38.9%	1.6	1.2%	0.8	1.1%	1.9	1.3%	111.8	100%
Northeast															
	8th	7.5	66.1%	1.0	8.9%	2.7	23.9%	0.1	0.5%	0.0	0.0%	0.1	0.7%	11.3	100%
	13th	2.3	52.1%	0.1	1.8%	1.8	41.8%	0.1	2.8%	0.0	0.0%	0.1	1.5%	4.4	100%
	17th	8.1	35.9%	4.1	18.1%	9.9	43.9%	0.2	1.0%	0.1	0.5%	0.1	0.6%	22.5	100%
	19th	6.0	41.0%	1.1	7.6%	7.4	50.2%	0.0	0.0%	0.1	0.7%	0.1	0.6%	14.6	100%
	20th	4.4	67.8%	0.3	5.3%	1.7	25.8%	0.0	0.7%	0.0	0.0%	0.0	0.4%	6.5	100%
Northeast Total		28.2	52.6%	6.6	8.3%	23.4	37.1%	0.5	1.0%	0.2	0.2%	0.4	0.7%	59.3	100%
Southern															
	3rd	0.2	19.7%	0.0	0.9%	0.7	79.0%	0.0	0.0%	0.0	0.0%	0.0	0.4%	0.9	100%
	4th	14.3	31.2%	18.6	40.6%	12.2	26.6%	0.1	0.3%	0.4	0.9%	0.2	0.4%	45.9	100%
	10th	2.8	27.2%	0.5	4.5%	6.9	65.7%	0.1	0.9%	0.0	0.0%	0.2	1.8%	10.5	100%
	11th	0.9	34.2%	0.8	29.8%	0.9	34.6%	0.0	0.9%	0.0	0.0%	0.0	0.6%	2.6	100%
	12th	0.5	26.1%	0.0	2.2%	1.3	68.5%	0.1	3.2%	0.0	0.0%	0.0	0.1%	1.9	100%
	15th	0.8	60.3%	0.0	0.0%	0.5	37.3%	0.0	2.5%	0.0	0.0%	0.0	0.0%	1.3	100%
	16th	1.0	64.6%	0.0	0.0%	0.5	34.4%	0.0	0.9%	0.0	0.0%	0.0	0.0%	1.6	100%
Southern Total		20.6	37.6%	19.9	11.1%	23.0	49.4%	0.4	1.2%	0.4	0.1%	0.4	0.5%	64.7	100%
Western															
	6th	1.8	66.1%	0.2	7.0%	0.2	8.8%	0.4	15.4%	0.0	0.0%	0.1	2.7%	2.6	100%
	7th	2.3	69.9%	0.0	0.0%	1.0	29.6%	0.0	0.4%	0.0	0.0%	0.0	0.1%	3.2	100%
	9th	1.5	51.8%	0.0	0.3%	1.4	46.8%	0.0	1.2%	0.0	0.0%	0.0	0.0%	2.9	100%
	14th	0.9	88.0%	0.0	3.8%	0.1	8.3%	0.0	0.0%	0.0	0.0%	0.0	0.0%	1.0	100%
	21st	10.3	77.6%	0.5	3.6%	2.3	17.5%	0.1	0.6%	0.1	0.5%	0.0	0.2%	13.3	100%
	22nd	1.5	63.9%	0.0	0.0%	0.1	3.3%	0.8	32.6%	0.0	0.0%	0.0	0.1%	2.4	100%
Western Total		18.3	69.5%	0.7	2.4%	5.1	19.1%	1.3	8.4%	0.1	0.1%	0.1	0.5%	25.6	100%
Missing JD Data		0.1		0.5		0.8		0.0		0.0		0.0		1.4	
Statewide Total		100.4	38.2%	65.5	24.9%	88.9	33.8%	3.8	1.4%	1.4	0.5%	2.8	1.1%	262.8	100%

June 2018 CDYC Supplemental Report

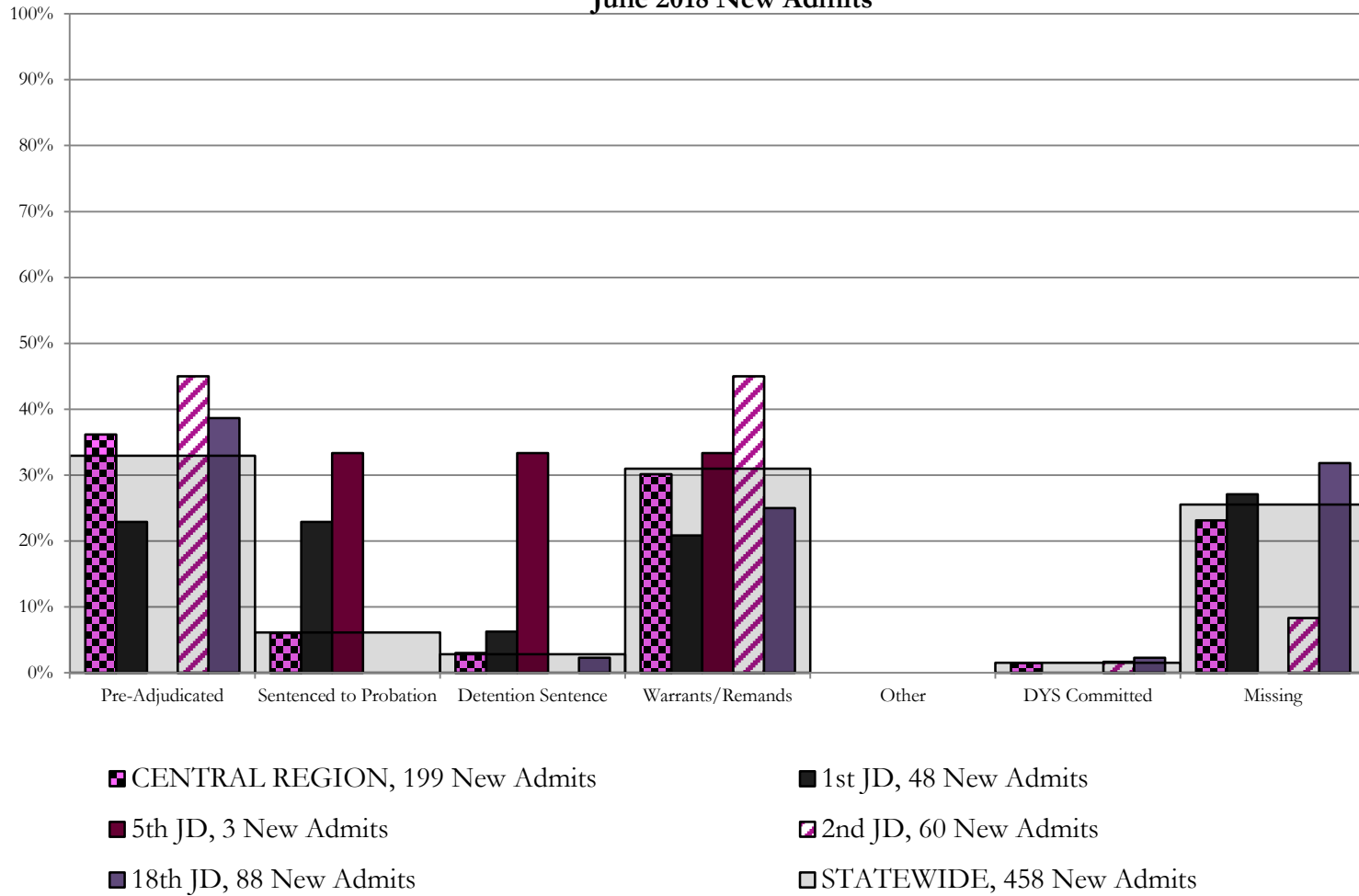
CYDC Reason Detained (RD) by Judicial District

Region	JD	Monthly New Admits	Pre-Adjudicated				Sentenced to Probation				Detention Sentence								Warrants/Remands				Other				DYS Committed		Missing									
			Felony		Misdemeanor		Technical Violator		New Charges		Probation Sentence		Detention Sentence		Valid Court Order (VCO) Truancy		Awaiting DSS (Social Services) Placement		Failure to Appear (FTA)		Failure to Comply (FTC)		Interstate Compact on Juveniles (ICJ) Hold		Immigration Hold		No Bond Hold		Out-of-Country Warrant		Institutional		Parole		Missing			
			#	%	#	%	#	%	#	%	#	%	#	%	#	%	#	%	#	%	#	%	#	%	#	%	#	%	#	%	#	%	#	%	#	%		
<i>Central Region</i>																																						
	1st	48	6	12.5%	5	10.4%	11	22.9%	0	0.0%	0	0.0%	3	6.3%	0	0.0%	0	0.0%	1	2.1%	9	18.8%	0	0.0%	0	0.0%	0	0.0%	0	0.0%	0	0.0%	0	0.0%	0	0.0%	13	27.1%
	2nd	60	24	40.0%	3	5.0%	0	0.0%	0	0.0%	0	0.0%	0	0.0%	0	0.0%	8	13.3%	19	31.7%	0	0.0%	0	0.0%	0	0.0%	0	0.0%	0	0.0%	1	1.7%	0	0.0%	5	8.3%		
	5th	3	0	0.0%	0	0.0%	1	33.3%	0	0.0%	0	0.0%	1	33.3%	0	0.0%	0	0.0%	0	0.0%	1	33.3%	0	0.0%	0	0.0%	0	0.0%	0	0.0%	0	0.0%	0	0.0%	0	0.0%	0	0.0%
	18th	88	23	26.1%	11	12.5%	0	0.0%	0	0.0%	0	0.0%	2	2.3%	0	0.0%	0	0.0%	4	4.5%	18	20.5%	0	0.0%	0	0.0%	0	0.0%	0	0.0%	1	1.1%	1	1.1%	28	31.8%		
Central Total		199	53	27%	19	10%	12	6.0%	0	0.0%	0	0.0%	6	3.0%	0	0.0%	0	0.0%	13	7%	47	24%	0	0.0%	0	0.0%	0	0.0%	0	0.0%	0	0.0%	2	1.0%	1	0.5%	46	23.1%
<i>Northeast Region</i>																																						
	8th	30	5	16.7%	6	20.0%	0	0.0%	0	0.0%	0	0.0%	1	3.3%	0	0.0%	0	0.0%	3	10.0%	12	40.0%	0	0.0%	0	0.0%	0	0.0%	0	0.0%	0	0.0%	0	0.0%	0	0.0%	3	10.0%
	13th	6	3	50.0%	0	0.0%	0	0.0%	0	0.0%	0	0.0%	0	0.0%	1	16.7%	0	0.0%	0	0.0%	2	33.3%	0	0.0%	0	0.0%	0	0.0%	0	0.0%	0	0.0%	0	0.0%	0	0.0%	0	0.0%
	17th	38	18	47.4%	3	7.9%	0	0.0%	0	0.0%	0	0.0%	0	0.0%	0	0.0%	0	0.0%	2	5.3%	11	28.9%	0	0.0%	0	0.0%	0	0.0%	0	0.0%	0	0.0%	0	0.0%	0	0.0%	4	10.5%
	19th	52	23	44.2%	4	7.7%	13	25.0%	0	0.0%	0	0.0%	0	0.0%	0	0.0%	0	0.0%	1	1.9%	11	21.2%	0	0.0%	0	0.0%	0	0.0%	0	0.0%	0	0.0%	0	0.0%	0	0.0%	0	0.0%
	20th	12	1	8.3%	0	0.0%	1	8.3%	0	0.0%	0	0.0%	0	0.0%	0	0.0%	2	16.7%	0	0.0%	1	8.3%	0	0.0%	0	0.0%	0	0.0%	0	0.0%	0	0.0%	0	0.0%	0	0.0%	7	58.3%
Northeast Total		138	50	36%	13	9%	14	10.1%	0	0.0%	0	0.0%	1	0.7%	1	0.7%	2	1.4%	6	4.3%	37	27%	0	0.0%	0	0.0%	0	0.0%	0	0.0%	0	0.0%	0	0.0%	0	0.0%	14	10%
<i>Southern Region</i>																																						
	3rd	0	0	0.0%	0	0%	0	0.0%	0	0.0%	0	0.0%	0	0.0%	0	0.0%	0	0.0%	0	0.0%	0	0.0%	0	0.0%	0	0.0%	0	0.0%	0	0.0%	0	0.0%	0	0.0%	0	0.0%	0	0.0%
	4th	64	36	56.3%	4	6.3%	1	1.6%	0	0.0%	0	0.0%	0	0.0%	0	0.0%	0	0.0%	6	9.4%	9	14.1%	0	0.0%	0	0.0%	0	0.0%	0	0.0%	4	6.3%	0	0.0%	4	6.3%		
	10th	14	1	7.1%	1	7.1%	0	0.0%	1	7.1%	0	0.0%	0	0.0%	0	0.0%	0	0.0%	8	57.1%	3	21.4%	0	0.0%	0	0.0%	0	0.0%	0	0.0%	0	0.0%	0	0.0%	0	0.0%	0	0.0%
	11th	6	3	50.0%	1	16.7%	0	0.0%	0	0.0%	0	0.0%	0	0.0%	0	0.0%	0	0.0%	1	16.7%	0	0.0%	0	0.0%	0	0.0%	0	0.0%	0	0.0%	0	0.0%	0	0.0%	1	16.7%		
	12th	4	0	0.0%	0	0.0%	0	0.0%	0	0.0%	0	0.0%	0	0.0%	0	0.0%	0	0.0%	1	25.0%	1	25.0%	0	0.0%	0	0.0%	0	0.0%	0	0.0%	0	0.0%	0	0.0%	2	50.0%		
	15th	1	0	0.0%	0	0.0%	0	0.0%	0	0.0%	0	0.0%	0	0.0%	0	0.0%	0	0.0%	0	0.0%	0	0.0%	0	0.0%	0	0.0%	0	0.0%	0	0.0%	0	0.0%	0	0.0%	1	100.0%		
	16th	4	1	25.0%	0	0.0%	0	0.0%	0	0.0%	0	0.0%	1	25.0%	0	0.0%	0	0.0%	0	0.0%	1	25.0%	0	0.0%	0	0.0%	0	0.0%	0	0.0%	0	0.0%	0	0.0%	1	25.0%		
Southern Total		93	41	44%	6	6%	1	1.1%	1	1.1%	0	0.0%	1	1.1%	0	0.0%	0	0.0%	16	17%	14	15%	0	0.0%	0	0.0%	0	0.0%	0	0.0%	0	0.0%	4	4.3%	0	0.0%	9	10%
<i>Western Region</i>																																						
	6th	2	1	50.0%	0	0.0%	0	0.0%	0	0.0%	0	0.0%	0	0.0%	0	0.0%	0	0.0%	0	0.0%	0	0.0%	0	0.0%	0	0.0%	0	0.0%	0	0.0%	0	0.0%	0	0.0%	1	50%		
	7th	2	1	50.0%	0	0.0%	0	0.0%	0	0.0%	0	0.0%	1	50.0%	0	0.0%	0	0.0%	0	0.0%	0	0.0%	0	0.0%	0	0.0%	0	0.0%	0	0.0%	0	0.0%	0	0.0%	0	0.0%	0	0.0%
	9th	5	0	0.0%	0	0.0%	0	0.0%	0	0.0%	0	0.0%	0	0.0%	0	0.0%	0	0.0%	0	0.0%	0	0.0%	0	0.0%	0	0.0%	0	0.0%	0	0.0%	0	0.0%	0	0.0%	0	0.0%	5	100.0%
	14th	0	0	0.0%	0	0.0%	0	0.0%	0	0.0%	0	0.0%	0	0.0%	0	0.0%	0	0.0%	0	0.0%	0	0.0%	0	0.0%	0	0.0%	0	0.0%	0	0.0%	0	0.0%	0	0.0%	0	0.0%	0	0.0%
	21st	15	4	26.7%	0	0.0%	0	0.0%	0	0.0%	0	0.0%	1	6.7%	0	0.0%	0	0.0%	1	6.7%	7	46.7%	0	0.0%	0	0.0%	0	0.0%	0	0.0%	0	0.0%	0	0.0%	2	13.3%		
	22nd	4	1	25.0%	1	25.0%	0	0.0%	0	0.0%	0	0.0%	0	0.0%	0	0.0%	0	0.0%	1	25.0%	0	0.0%	0	0.0%	0	0.0%	0	0.0%	0	0.0%	0	0.0%	0	0.0%	1	25.0%		
Western Total		28	7	25%	1	3.6%	0	0.0%	0	0.0%	0	0.0%	2	7.1%	0	0.0%	0	0.0%	1	3.6%	8	29%	0	0.0%	0	0.0%	0	0.0%	0	0.0%	0	0.0%	0	0.0%	0	0.0%	9	32%
Individual RD Totals		458	151	33%	0	0%	27	5.9%	1	0.2%	0	0.0%	10	2.2%	1	0.2%	2	0.4%	36	8%	106	23%	0	0.0%	0	0.0%	0	0.0%	0	0.0%	0	0.0%	6	1.3%	1	0.2%	117	26%
Statewide Totals		458	151	33.0%	0	0.0%	28	6.1%	0	0.0%	13	2.8%	0	0.0%	2	0.4%	36	7.9%	142	31.0%	0	0.0%	0	0.0%	0	0.0%	0	0.0%	0	0.0%	7	1.5%	117	26%				

Central Region

CYDC Reason Detained by Judicial District

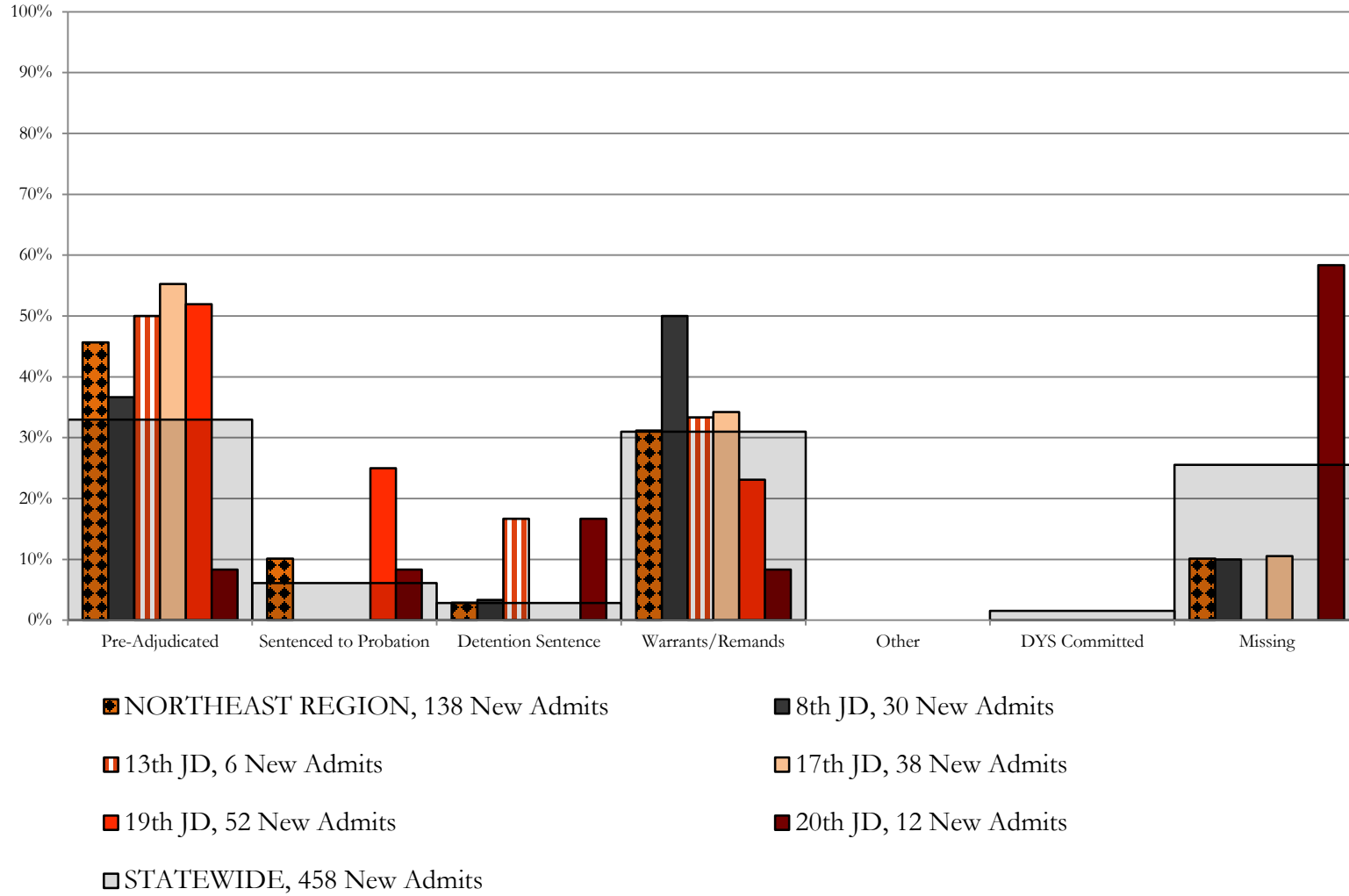
June 2018 New Admits



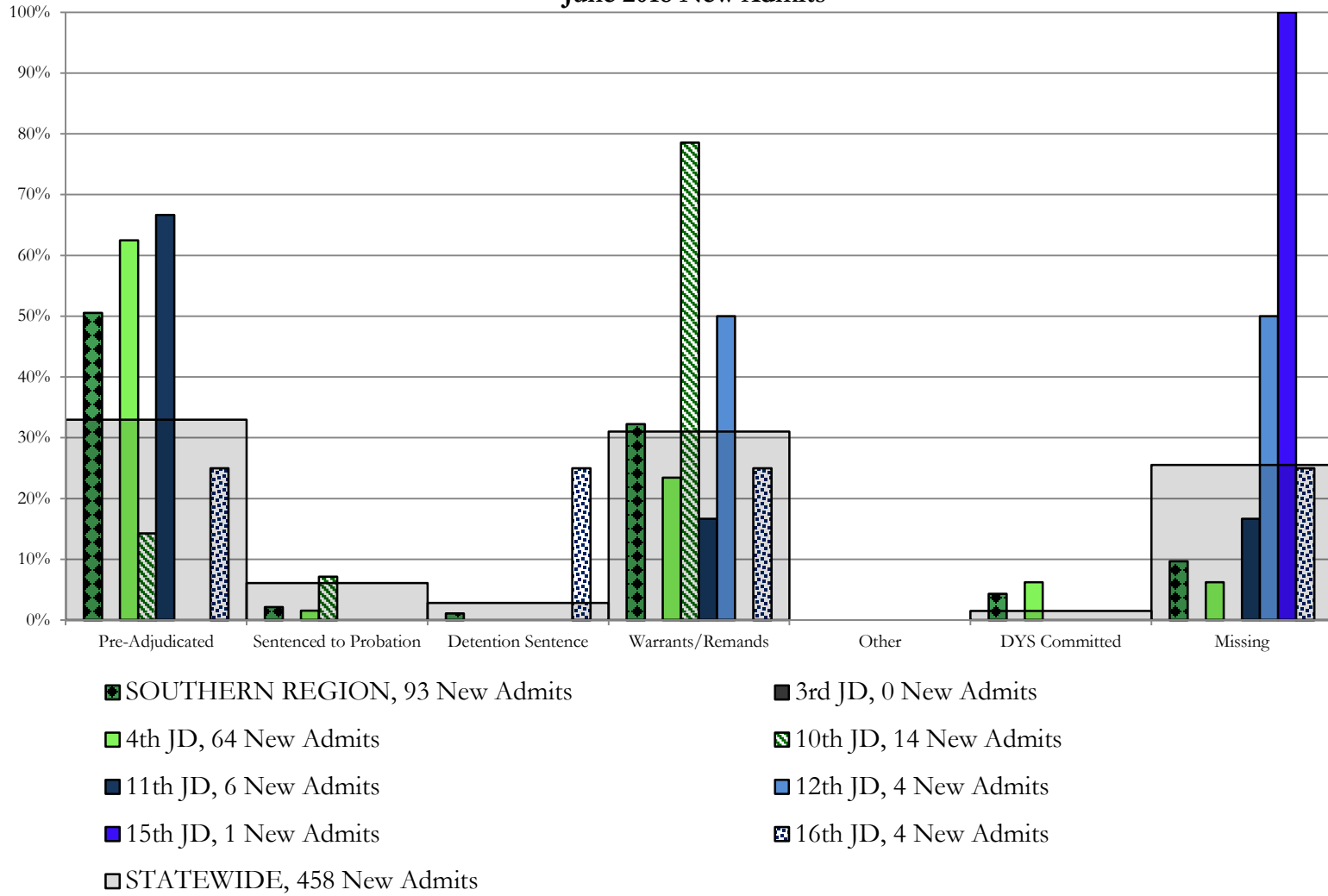
Northeast Region

CYDC Reason Detained by Judicial District

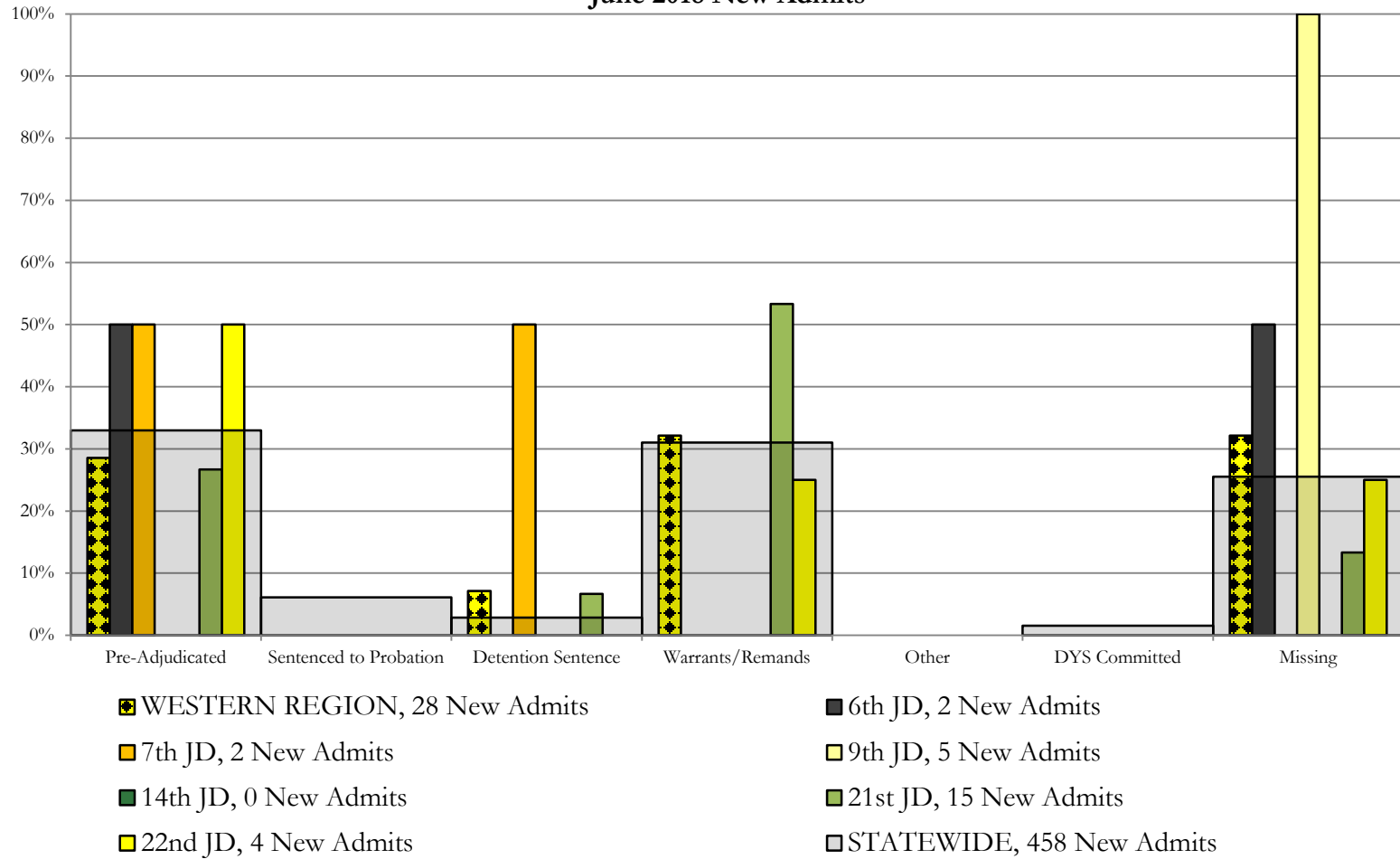
June 2018 New Admits



Southern Region CYDC Reason Detained by Judicial District June 2018 New Admits



Western Region CYDC Reason Detained by Judicial District June 2018 New Admits



June 2018 CYDC Supplemental Report

CYDC Reason Detained (RD) by Judicial District Year to Date

Region	JD	Pre-Adjudicated				Sentenced to Probation				Detention Sentence								Warrants/Remands				Other				DYS Committed				Missing										
		Felony		Misdemeanor		Technical Violator		New Charges		Probation Sentence		Detention Sentence		Valid Court Order (VCO) Truancy		Awaiting DSS (Social Services) Placement		Failure to Appear (FTA)		Failure to Comply (FTC)		Interstate Compact on Juveniles (ICJ) Hold		Immigration Hold		Institutional		Parole		Missing										
		#	%	#	%	#	%	#	%	#	%	#	%	#	%	#	%	#	%	#	%	#	%	#	%	#	%	#	%	#	%									
<i>Central Region</i>																																								
	1st	636	135	21.2%	94	14.8%	202	31.8%	3	0.5%	0	0.0%	55	8.6%	0	0.0%	0	0.0%	40	6.3%	71	11.2%	1	0.2%	0	0.0%	0	0.0%	0	0.0%	35	5.5%								
	2nd	829	311	37.5%	54	6.5%	1	0.1%	0	0.0%	0	0.0%	0	0.0%	0	0.0%	0	0.0%	98	11.8%	271	32.7%	13	1.6%	0	0.0%	2	0.2%	1	0.1%	78	9.4%								
	5th	34	13	38.2%	7	20.6%	3	8.8%	0	0.0%	0	0.0%	4	11.8%	0	0.0%	0	0.0%	0	0.0%	6	17.6%	0	0.0%	0	0.0%	0	0.0%	0	0.0%	1	2.9%								
	18th	1,029	250	24.3%	211	20.5%	0	0.0%	1	0.1%	0	0.0%	20	1.9%	0	0.0%	1	0.1%	77	7.5%	342	33.2%	8	0.8%	0	0.0%	4	0.4%	5	0.5%	110	10.7%								
Central Total		2,528	709	28.0%	366	14.5%	206	8.1%	4	0.2%	0	0.0%	79	3.1%	0	0.0%	1	0.0%	215	8.5%	690	27.3%	22	0.9%	0	0.0%	6	0.1%	6	0.2%	224	8.9%								
<i>Northeast Region</i>																																								
	8th	281	60	21.4%	44	15.7%	0	0.0%	0	0.0%	0	0.0%	20	7.1%	0	0.0%	0	0.0%	19	6.8%	128	45.6%	0	0.0%	0	0.0%	0	0.0%	0	0.0%	10	3.6%								
	13th	76	15	19.7%	18	23.7%	4	5.3%	0	0.0%	0	0.0%	1	1.3%	5	6.6%	0	0.0%	1	1.3%	31	40.8%	0	0.0%	0	0.0%	0	0.0%	0	0.0%	1	1.3%								
	17th	515	125	24.3%	27	5.2%	1	0.2%	0	0.0%	0	0.0%	6	1.2%	0	0.0%	0	0.0%	55	10.7%	196	38.1%	0	0.0%	0	0.0%	0	0.0%	0	0.0%	105	20.4%								
	19th	424	139	32.8%	64	15.1%	115	27.1%	0	0.0%	0	0.0%	2	0.5%	1	0.2%	1	0.2%	20	4.7%	78	18.4%	0	0.0%	0	0.0%	0	0.0%	0	0.0%	4	0.9%								
	20th	141	19	13.5%	4	2.8%	18	12.8%	1	0.7%	0	0.0%	30	21.3%	0	0.0%	38	27.0%	3	2.1%	14	9.9%	0	0.0%	0	0.0%	0	0.0%	0	0.0%	14	9.9%								
Northeast Total		1,437	358	24.9%	157	10.9%	138	9.6%	1	0.1%	0	0.0%	59	4.1%	6	0.4%	39	2.7%	98	6.8%	447	31.1%	0	0.0%	0	0.0%	0	0.0%	0	0.0%	134	9.3%								
<i>Southern Region</i>																																								
	3rd	24	6	25.0%	3	12.5%	5	20.8%	0	0.0%	0	0.0%	1	4.2%	0	0.0%	0	0.0%	3	12.5%	5	20.8%	0	0.0%	0	0.0%	0	0.0%	0	0.0%	1	4.2%								
	4th	727	304	41.8%	33	4.5%	8	1.1%	19	2.6%	0	0.0%	6	0.8%	2	0.3%	2	0.3%	82	11.3%	201	27.6%	1	0.1%	0	0.0%	28	3.9%	1	0.1%	40	5.5%								
	10th	236	45	19.1%	16	6.8%	3	1.3%	12	5.1%	0	0.0%	5	2.1%	4	1.7%	0	0.0%	41	17.4%	91	38.6%	0	0.0%	0	0.0%	0	0.0%	0	0.0%	19	8.1%								
	11th	92	32	34.8%	9	9.8%	2	2.2%	0	0.0%	0	0.0%	2	2.2%	0	0.0%	0	0.0%	4	4.3%	12	13.0%	0	0.0%	0	0.0%	0	0.0%	0	0.0%	31	33.7%								
	12th	38	16	42.1%	6	15.8%	0	0.0%	0	0.0%	0	0.0%	0	0.0%	0	0.0%	1	2.6%	6	15.8%	6	15.8%	0	0.0%	0	0.0%	0	0.0%	0	0.0%	3	7.9%								
	15th	19	5	26.3%	2	10.5%	5	26.3%	0	0.0%	0	0.0%	1	5.3%	0	0.0%	0	0.0%	1	5.3%	3	15.8%	1	5.3%	0	0.0%	0	0.0%	0	0.0%	1	5.3%								
	16th	34	15	44.1%	7	20.6%	1	2.9%	0	0.0%	0	0.0%	5	14.7%	0	0.0%	0	0.0%	1	2.9%	2	5.9%	0	0.0%	0	0.0%	0	0.0%	0	0.0%	3	8.8%								
Southern Total		1,170	423	36.2%	76	6.5%	24	2.1%	31	2.6%	0	0.0%	20	1.7%	6	0.5%	3	0.3%	138	11.8%	320	27.4%	2	0.2%	0	0.0%	28	2.4%	1	0.1%	98	8.4%								
<i>Western Region</i>																																								
	6th	42	6	14.3%	5	11.9%	3	7.1%	1	2.4%	0	0.0%	0	0.0%	0	0.0%	0	0.0%	1	2.4%	9	21.4%	0	0.0%	0	0.0%	0	0.0%	0	0.0%	17	40.5%								
	7th	65	21	32.3%	4	6.2%	4	6.2%	0	0.0%	0	0.0%	6	9.2%	0	0.0%	0	0.0%	10	15.4%	11	16.9%	0	0.0%	0	0.0%	0	0.0%	0	0.0%	9	13.8%								
	9th	53	14	26.4%	11	20.8%	3	5.7%	0	0.0%	0	0.0%	1	1.9%	0	0.0%	0	0.0%	1	1.9%	6	11.3%	0	0.0%	0	0.0%	0	0.0%	0	0.0%	17	32.1%								
	14th	18	6	33.3%	3	16.7%	0	0.0%	1	5.6%	0	0.0%	0	0.0%	0	0.0%	0	0.0%	0	0.0%	4	22.2%	0	0.0%	0	0.0%	0	0.0%	0	0.0%	4	22.2%								
	21st	249	72	28.9%	37	14.9%	0	0.0%	0	0.0%	0	0.0%	11	4.4%	0	0.0%	0	0.0%	19	7.6%	99	39.8%	0	0.0%	0	0.0%	0	0.0%	1	0.4%	10	4.0%								
	22nd	29	2	6.9%	6	20.7%	1	3.4%	0	0.0%	0	0.0%	0	0.0%	0	0.0%	0	0.0%	2	6.9%	2	6.9%	0	0.0%	0	0.0%	0	0.0%	0	0.0%	16	55.2%								
Western Total		456	121	26.5%	66	14.5%	11	2.4%	2	0.4%	0	0.0%	18	3.9%	0	0.0%	0	0.0%	33	7.2%	131	28.7%	0	0.0%	0	0.0%	0	0.0%	1	0.2%	73	16.0%								
Individual RD Totals		5,591	1611	28.8%	665	11.9%	379	6.8%	38	0.7%	0	0.0%	176	3.1%	12	0.1%	43	0.1%	484	8.7%	1588	28.4%	24	0.4%	0	0.0%	34	0.6%	8	0.1%	529	9.5%								
Statewide Totals		5,591	2,276	40.7%	417	7.5%					231				4.1%				2072				37.1%				24				42				0.8%		529		9.5%	

June 2018 CYDC Supplemental Report

DYS Detention Maximum Youth Served by Judicial District¹

Region	JD	Detention Capacity	Detention ADP		Maximum Youth Served on a Single Day ^{2,3}			
			June 2018	YTD	June 2018		YTD	
					Number of Youth	% of Detention Capacity	Number of Youth	% of Detention Capacity
<i>Central Region</i>								
	1st	37	26.5	28.7	31	83.8%	40	108.1%
	2nd	64	35.0	40.0	43	67.2%	60	93.8%
	5th	4	2.3	1.4	3	75.0%	6	150.0%
	18th	61	41.9	41.6	54	88.5%	57	93.4%
Central Region		166	105.6	111.8	123	74.1%	136	81.9%
<i>Northeast Region</i>								
	8th	21	16.1	11.3	21	100.0%	21	100.0%
	13th	5	4.0	4.4	6	120.0%	9	180.0%
	17th	30	21.5	22.5	28	93.3%	30	100.0%
	19th	25	18.3	14.6	24	96.0%	28	112.0%
	20th	13	7.3	6.5	10	76.9%	14	107.7%
Northeast Region		94	67.1	59.3	81	86.2%	81	86.2%
<i>Southern Region</i>								
	3rd	2	1.2	0.9	2	100.0%	4	200.0%
	4th	51	46.8	45.9	52	102.0%	55	107.8%
	10th	13	6.8	10.5	12	92.3%	19	146.2%
	11th	8	1.5	2.6	3	37.5%	10	125.0%
	12th	4	2.2	1.9	3	75.0%	5	125.0%
	15th	2	2.0	1.3	2	100.0%	3	150.0%
	16th	3	2.5	1.6	4	133.3%	4	133.3%
Southern Region		83	62.8	64.7	70	84.3%	78	94.0%
<i>Western Region</i>								
	6th	5	1.3	2.6	2	40.0%	7	140.0%
	7th	7	3.0	3.2	4	57.1%	8	114.3%
	9th	6	2.8	2.9	5	83.3%	8	133.3%
	14th	3	1.0	1.0	1	33.3%	4	133.3%
	21st	14	14.6	13.3	19	135.7%	19	135.7%
	22nd	4	1.3	2.4	4	100.0%	6	150.0%
Western Region		39	23.8	25.6	29	74.4%	37	94.9%
<i>Missing JD or Multiple JDs</i>			0.4	1.4				
Statewide		382	259.9	262.8	273	71.5%	302	79.1%

¹ Maximum youth served is the highest number of youth in detention on a single day during the month or fiscal year.

² Regional figures are not the sum of judicial districts, but represent the maximum count on one day for the entire region.

³ State figures are not the sum of regional figures, but represent the maximum count on one day for the entire state.

June 2018 CYDC Supplemental Report

CYDC Community ADP by Judicial District

Region	JD	Committed		Diversion		ICJ		Municipal		Pre-Adjudicated		Sentenced		VCO		Total	
		June	YTD	June	YTD	June	YTD	June	YTD	June	YTD	June	YTD	June	YTD	June	YTD
<i>Central Region</i>																	
	1st	0.0	0.0	0.0	0.6	0.0	0.0	0.0	6.1	144.3	167.8	21.7	19.3	0.0	0.0	166.1	193.8
	2nd	2.0	0.7	0.0	0.0	1.0	0.7	0.0	1.0	199.4	164.5	25.1	27.1	0.0	0.0	227.6	194.1
	5th	0.0	0.0	22.9	12.6	0.0	0.0	0.0	0.0	7.5	7.8	32.1	34.0	0.0	0.0	62.5	54.4
	18th	0.8	0.7	0.0	0.0	0.0	0.0	0.0	0.0	239.3	232.3	22.9	25.6	0.0	0.7	262.9	259.3
Central Total		2.8	1.5	22.9	13.2	1.0	0.7	0.0	7.1	590.5	572.4	101.9	106.0	0.0	0.7	719.0	701.6
<i>Northeast Region</i>																	
	8th	0.0	0.0	4.7	1.4	0.0	0.0	0.0	0.0	38.8	43.7	17.4	29.6	0.0	0.0	60.9	74.8
	13th	0.0	0.0	0.0	0.0	0.0	0.0	1.0	0.2	16.6	14.0	5.0	2.7	3.3	5.0	25.9	21.9
	17th	1.0	1.0	0.0	0.0	0.0	0.0	0.0	0.0	213.6	169.2	69.7	58.9	0.0	0.0	284.3	229.0
	19th	0.1	0.2	1.0	1.4	0.0	0.0	0.0	1.1	56.8	50.8	24.9	24.9	0.0	1.1	82.9	79.5
	20th	0.3	0.5	0.6	0.8	0.0	0.0	0.0	0.0	56.0	37.9	18.0	13.8	3.0	1.7	77.9	54.8
Northeast Total		1.5	1.7	6.3	3.6	0.0	0.0	1.0	1.2	381.8	315.6	135.0	130.0	6.3	7.9	531.9	460.0
<i>Southern Region</i>																	
	3rd	0.0	0.0	0.0	0.0	0.0	0.0	0.0	0.0	9.1	11.0	6.0	6.0	0.0	0.0	15.1	17.1
	4th	0.4	1.2	0.0	0.0	0.0	0.0	45.0	75.4	111.6	107.2	33.9	43.3	0.0	0.0	191.0	227.1
	10th	1.0	1.5	0.0	0.0	1.0	1.0	2.0	2.1	30.2	21.4	9.7	18.3	1.4	1.9	45.3	46.2
	11th	1.0	1.1	0.0	0.1	0.0	0.0	3.5	6.1	22.7	14.6	21.8	19.8	0.0	1.1	49.0	42.8
	12th	0.0	0.0	1.8	2.8	0.0	0.0	3.9	2.7	17.8	12.2	0.0	0.9	0.0	0.0	23.5	18.6
	15th	0.0	0.0	3.0	1.4	0.0	0.0	0.0	0.0	3.2	4.2	13.8	11.4	0.0	0.0	20.0	17.1
	16th	0.0	0.0	0.0	0.0	0.0	0.0	0.0	0.0	10.3	9.4	3.5	5.8	17.7	14.5	31.5	29.6
Southern Total		2.4	3.9	4.8	4.2	1.0	1.0	54.4	86.2	204.9	180.1	88.8	105.6	19.1	17.5	375.3	398.5
<i>Western Region</i>																	
	6th	0.0	0.0	0.0	0.0	0.0	0.0	0.0	0.0	5.7	8.1	0.0	0.5	0.0	0.0	5.7	8.6
	7th	0.0	0.0	7.4	4.6	0.0	0.0	1.0	0.4	14.5	16.8	13.9	19.5	0.0	0.0	36.8	41.4
	9th	0.0	0.0	0.5	0.4	0.0	0.0	1.2	2.0	13.5	13.3	0.5	1.1	0.0	0.0	15.7	16.8
	14th	0.0	0.1	1.9	4.5	0.0	0.0	0.0	0.0	6.9	4.6	2.0	0.9	0.0	0.0	10.8	10.2
	21st	0.0	0.0	0.0	0.0	0.0	0.0	0.0	0.0	46.2	40.2	12.6	14.6	0.0	0.0	58.7	54.8
	22nd	0.0	0.0	0.0	1.0	0.0	0.0	0.0	0.0	6.4	7.1	4.0	4.8	0.0	0.0	10.4	12.9
Western Total		0.0	0.1	9.8	10.6	0.0	0.0	2.2	2.4	93.2	90.2	32.9	41.5	0.0	0.0	138.2	144.7
Statewide Total		6.6	7.1	43.8	31.6	2.0	1.7	57.6	97.0	1270.4	1158.3	358.6	383.1	25.4	26.1	1764.4	1704.8