

April 2018 FY 2017-2018 CYDC JDSAG SUPPLEMENTAL REPORT

Prepared by the Division of Youth Services (DYS)
Data Management and Analysis
May 24, 2018



COLORADO

**Office of Children,
Youth & Families**

Division of Youth Services

April 2018 CYDC Supplemental Report

DYS Commitment ADP & New Commitments by Judicial District

Region	JD ¹	2018 Population Estimates ²	ADP ³		New Commitments		
			April 2018	YTD	April 2018	YTD	YTD Rate ⁴
<i>Central Region</i>							
	1st	56,139	88.0	80.8	3	42	7.5
	2nd	65,275	93.8	96.8	0	42	6.4
	5th	10,694	7.0	7.4	1	2	1.9
	18th	122,766	85.1	75.5	7	49	4.0
Central Total		254,874	273.8	260.5	11	135	5.3
<i>Northeast Region</i>							
	8th	34,025	36.1	39.6	1	20	5.9
	13th	8,531	9.0	7.9	0	3	3.5
	17th	73,588	62.7	62.7	5	26	3.5
	19th	37,441	53.9	57.6	3	28	7.5
	20th	33,056	7.2	8.7	0	2	0.6
Northeast Total		186,641	168.9	176.6	9	79	4.2
<i>Southern Region</i>							
	3rd	1,785	0.0	0.4	0	0	0.0
	4th	83,158	99.6	96.6	2	50	6.0
	10th	18,165	23.2	31.2	1	8	4.4
	11th	7,111	6.0	6.1	0	3	4.2
	12th	5,276	4.5	5.8	0	1	1.9
	15th	2,117	6.0	5.9	0	6	28.3
	16th	2,827	1.0	0.1	0	1	3.5
Southern Total		120,439	140.2	146.1	3	69	5.7
<i>Western Region</i>							
	6th	6,710	5.1	8.0	0	4	6.0
	7th	10,675	8.0	8.2	0	5	4.7
	9th	9,607	7.0	6.2	0	2	2.1
	14th	5,587	1.2	2.2	0	1	1.8
	21st	16,016	31.5	33.8	1	21	13.1
	22nd	3,144	7.0	5.2	0	5	15.9
Western Total		51,739	59.8	63.7	1	38	7.3
Statewide Total		613,693	642.8	646.8	24	321	5.2

¹ JD represents the judicial district in which the client was committed. Regional totals are a sum of their respective judicial districts. Regional totals reported here may differ slightly from those reported in the Monthly Population Report, where region is defined by active caseloads.

² Source: DOLA 2018 Estimates.

³ Due to rounding, totals shown may not be an exact sum of the subtotals.

⁴ Per 10,000 youth in the population.

April 2018 CYDC Supplemental Report

DYS Detention ADP and New Detention Admissions by Judicial District

Region	JD	2018 Population Estimates ¹	ADP		New Admits		YTD New Admit Rate ²
			April 2018	YTD	April 2018	YTD	
<i>Central Region</i>							
	1st	56,139	31.3	29.2	60	540	96.2
	2nd	65,275	42.3	40.4	60	705	108.0
	5th	10,694	2.1	1.5	3	31	29.0
	18th	122,766	46.5	41.6	73	855	69.6
Central Total		254,874	122.3	112.7	196	2,131	83.6
<i>Northeast Region</i>							
	8th	34,025	8.8	10.8	16	226	66.4
	13th	8,531	5.8	4.3	13	64	75.0
	17th	73,588	22.6	22.6	41	434	59.0
	19th	37,441	9.8	14.2	33	335	89.5
	20th	33,056	6.4	6.2	10	112	33.9
Northeast Total		186,641	53.3	58.1	113	1,171	62.7
<i>Southern Region</i>							
	3rd	1,785	1.6	0.8	2	21	117.6
	4th	83,158	49.1	45.5	64	603	72.5
	10th	18,165	7.2	10.9	17	204	112.3
	11th	7,111	0.9	2.7	7	75	105.5
	12th	5,276	1.8	1.8	5	30	56.9
	15th	2,117	0.7	1.2	2	16	75.6
	16th	2,827	1.1	1.6	1	25	88.4
Southern Total		120,439	62.3	64.6	98	974	80.9
<i>Western Region</i>							
	6th	6,710	2.3	2.9	2	38	56.6
	7th	10,675	2.4	3.3	6	55	51.5
	9th	9,607	2.8	2.9	5	45	46.8
	14th	5,587	1.3	1.0	0	17	30.4
	21st	16,016	9.6	12.9	25	210	131.1
	22nd	3,144	0.5	2.8	1	25	79.5
Western Total		51,739	18.9	25.9	39	390	75.4
<i>Missing JD or Multiple JDs</i>			<i>0.5</i>	<i>1.6</i>			
Statewide Total		613,693	257.2	262.8	446	4,666	76.0

¹ Source: DOLA 2018 Estimates.

² Per 10,000 youth in the population.

April 2018 CYDC Supplemental Report

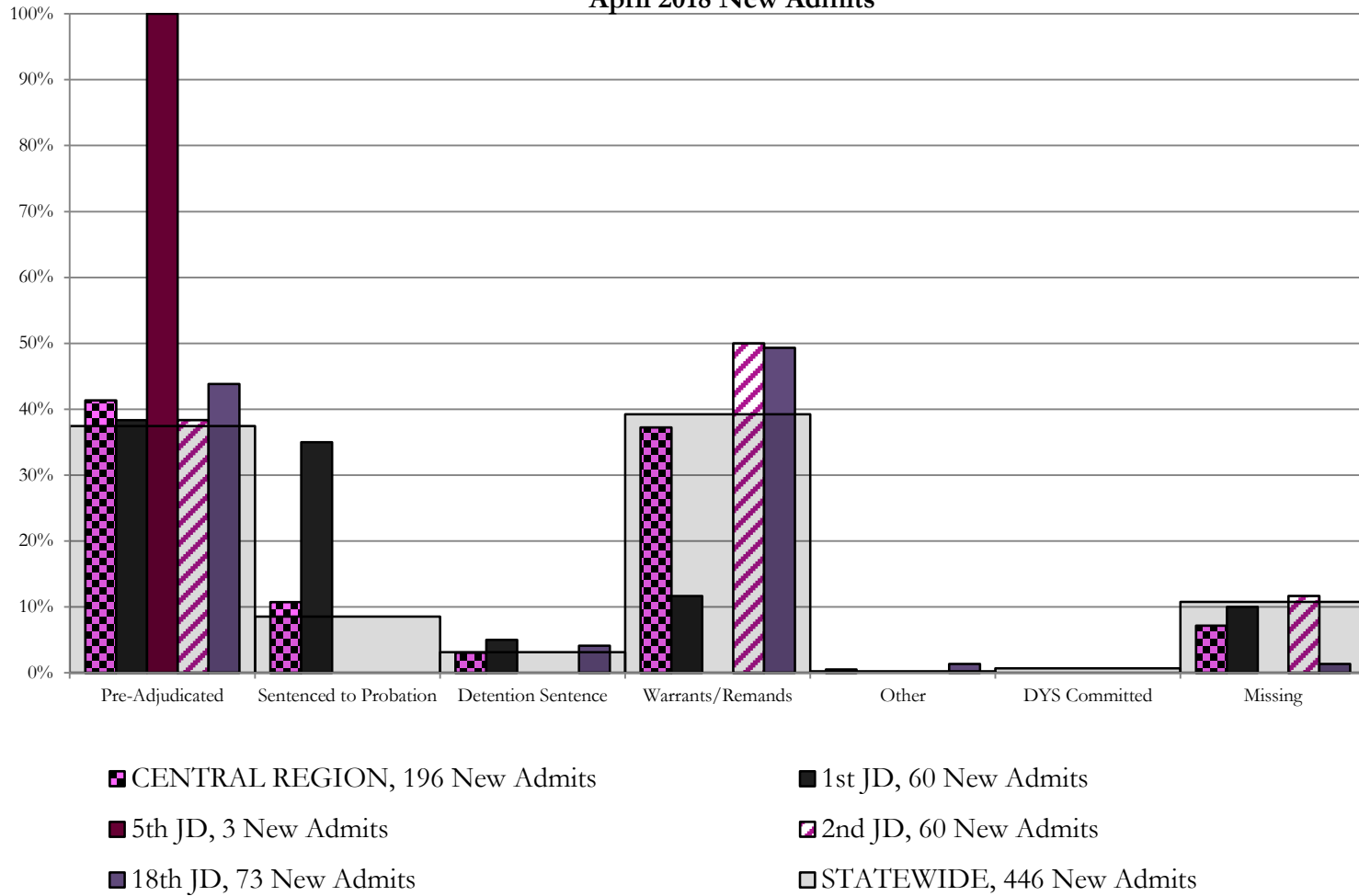
DYS Detention LOS by Judicial District				
Region	JD	YTD Detention Releases	YTD LOS (days)	LOS (days) Compared to State AVG
<i>Central Region</i>				
	1st	527	15.7	-0.8
	2nd	703	15.6	-0.9
	5th	28	12.9	-3.6
	18th	835	13.8	-2.7
Central Total		2,093	14.9	-1.6
<i>Northeast Region</i>				
	8th	231	14.4	-2.1
	13th	61	20.5	4.0
	17th	427	14.9	-1.6
	19th	342	11.3	-5.2
	20th	114	16.1	-0.4
Northeast Total		1,175	14.2	-2.3
<i>Southern Region</i>				
	3rd	22	7.0	-9.6
	4th	584	21.9	5.4
	10th	204	14.7	-1.8
	11th	77	10.0	-6.5
	12th	30	17.1	0.6
	15th	15	27.9	11.4
	16th	25	16.1	-0.4
Southern Total		957	18.9	2.4
<i>Western Region</i>				
	6th	41	21.9	5.4
	7th	54	17.6	1.1
	9th	44	18.4	1.9
	14th	15	13.8	-2.7
	21st	210	16.8	0.3
	22nd	25	34.1	17.6
Western Total		389	18.6	2.1
Statewide Total		4,647	16.5	-

April 2018 CYDC JDSAG Supplemental Report

CYDC Reason Detained (RD) by Judicial District

Region	JD	Monthly New Admits	Pre-Adjudicated				Sentenced to Probation				Detention Sentence								Warrants/Remands				Other				DYS Committed		Missing							
			Felony		Misdemeanor		Technical Violator		New Charges		Probation Sentence		Detention Sentence		Valid Court Order (VCO) Truancy		Awaiting DSS (Social Services) Placement		Failure to Appear (FTA)		Failure to Comply (FTC)		Interstate Compact on Juveniles (ICJ) Hold		Immigration Hold		No Bond Hold		Out-of-Country Warrant		Institutional		Parole		Missing	
			#	%	#	%	#	%	#	%	#	%	#	%	#	%	#	%	#	%	#	%	#	%	#	%	#	%	#	%	#	%	#	%	#	%
<i>Central Region</i>																																				
	1st	60	14	23.3%	9	15.0%	21	35.0%	0	0.0%	0	0.0%	3	5.0%	0	0.0%	0	0.0%	2	3.3%	5	8.3%	0	0.0%	0	0.0%	0	0.0%	0	0.0%	0	0.0%	0	0.0%	6	10.0%
	2nd	60	18	30.0%	5	8.3%	0	0.0%	0	0.0%	0	0.0%	0	0.0%	0	0.0%	9	15.0%	21	35.0%	0	0.0%	0	0.0%	0	0.0%	0	0.0%	0	0.0%	0	0.0%	0	0.0%	7	11.7%
	5th	3	1	33.3%	2	66.7%	0	0.0%	0	0.0%	0	0.0%	0	0.0%	0	0.0%	0	0.0%	0	0.0%	0	0.0%	0	0.0%	0	0.0%	0	0.0%	0	0.0%	0	0.0%	0	0.0%	0	0.0%
	18th	73	19	26.0%	13	17.8%	0	0.0%	0	0.0%	0	0.0%	3	4.1%	0	0.0%	0	0.0%	8	11.0%	28	38.4%	1	1.4%	0	0.0%	0	0.0%	0	0.0%	0	0.0%	0	0.0%	1	1.4%
Central Total		196	52	27%	29	15%	21	10.7%	0	0.0%	0	0.0%	6	3.1%	0	0.0%	0	0.0%	19	10%	54	28%	1	0.5%	0	0.0%	0	0.0%	0	0.0%	0	0.0%	0	0.0%	14	7.1%
<i>Northeast Region</i>																																				
	8th	16	1	6.3%	2	12.5%	0	0.0%	0	0.0%	0	0.0%	2	12.5%	0	0.0%	0	0.0%	1	6.3%	9	56.3%	0	0.0%	0	0.0%	0	0.0%	0	0.0%	0	0.0%	0	0.0%	1	6.3%
	13th	13	2	15.4%	2	15.4%	0	0.0%	0	0.0%	0	0.0%	0	0.0%	0	0.0%	0	0.0%	0	0.0%	4	30.8%	0	0.0%	0	0.0%	0	0.0%	0	0.0%	0	0.0%	0	0.0%	5	38.5%
	17th	41	10	24.4%	4	9.8%	0	0.0%	0	0.0%	0	0.0%	1	2.4%	0	0.0%	0	0.0%	1	2.4%	17	41.5%	0	0.0%	0	0.0%	0	0.0%	0	0.0%	0	0.0%	0	0.0%	8	19.5%
	19th	33	12	36.4%	6	18.2%	11	33.3%	0	0.0%	0	0.0%	0	0.0%	0	0.0%	2	6.1%	2	6.1%	2	6.1%	0	0.0%	0	0.0%	0	0.0%	0	0.0%	0	0.0%	0	0.0%	0	0.0%
	20th	10	0	0.0%	1	10.0%	0	0.0%	0	0.0%	0	0.0%	0	0.0%	0	0.0%	0	0.0%	4	40.0%	0	0.0%	0	0.0%	0	0.0%	0	0.0%	0	0.0%	0	0.0%	0	0.0%	4	40.0%
Northeast Total		113	25	22%	15	13%	12	10.6%	0	0.0%	0	0.0%	3	2.7%	0	0.0%	0	0.0%	4	3.5%	36	32%	0	0.0%	0	0.0%	0	0.0%	0	0.0%	0	0.0%	0	0.0%	18	16%
<i>Southern Region</i>																																				
	3rd	2	0	0.0%	0	0.0%	1	50.0%	0	0.0%	0	0.0%	0	0.0%	0	0.0%	0	0.0%	0	0.0%	0	0.0%	0	0.0%	0	0.0%	0	0.0%	0	0.0%	0	0.0%	0	0.0%	1	50.0%
	4th	64	19	29.7%	2	3.1%	2	3.1%	0	0.0%	0	0.0%	3	4.7%	0	0.0%	1	1.6%	13	20.3%	15	23.4%	0	0.0%	0	0.0%	0	0.0%	2	3.1%	0	0.0%	0	0.0%	7	10.9%
	10th	17	4	23.5%	1	5.9%	0	0.0%	0	0.0%	0	0.0%	0	0.0%	0	0.0%	8	47.1%	4	23.5%	0	0.0%	0	0.0%	0	0.0%	0	0.0%	0	0.0%	0	0.0%	0	0.0%	0	0.0%
	11th	7	3	42.9%	0	0.0%	0	0.0%	0	0.0%	0	0.0%	0	0.0%	0	0.0%	0	0.0%	2	28.6%	0	0.0%	0	0.0%	0	0.0%	0	0.0%	0	0.0%	0	0.0%	2	28.6%		
	12th	5	1	20.0%	1	20.0%	0	0.0%	0	0.0%	0	0.0%	0	0.0%	0	0.0%	2	40.0%	1	20.0%	0	0.0%	0	0.0%	0	0.0%	0	0.0%	0	0.0%	0	0.0%	0	0.0%	0	0.0%
	15th	2	1	50.0%	0	0.0%	1	50.0%	0	0.0%	0	0.0%	0	0.0%	0	0.0%	0	0.0%	0	0.0%	0	0.0%	0	0.0%	0	0.0%	0	0.0%	0	0.0%	0	0.0%	0	0.0%	0	0.0%
	16th	1	1	100.0%	0	0.0%	0	0.0%	0	0.0%	0	0.0%	0	0.0%	0	0.0%	0	0.0%	0	0.0%	0	0.0%	0	0.0%	0	0.0%	0	0.0%	0	0.0%	0	0.0%	0	0.0%	0	0.0%
Southern Total		98	29	30%	4	4%	4	4.1%	0	0.0%	0	0.0%	3	3.1%	0	0.0%	1	1.0%	23	23%	22	22%	0	0.0%	0	0.0%	0	0.0%	0	0.0%	2	2.0%	0	0.0%	10	10%
<i>Western Region</i>																																				
	6th	2	0	0.0%	0	0.0%	1	50.0%	0	0.0%	0	0.0%	0	0.0%	0	0.0%	0	0.0%	0	0.0%	0	0.0%	0	0.0%	0	0.0%	0	0.0%	0	0.0%	0	0.0%	1	50.0%		
	7th	6	1	16.7%	1	16.7%	0	0.0%	0	0.0%	0	0.0%	0	0.0%	0	0.0%	1	16.7%	2	33.3%	0	0.0%	0	0.0%	0	0.0%	0	0.0%	0	0.0%	0	0.0%	1	16.7%		
	9th	5	1	20.0%	1	20.0%	0	0.0%	0	0.0%	0	0.0%	0	0.0%	0	0.0%	1	20.0%	0	0.0%	0	0.0%	0	0.0%	0	0.0%	0	0.0%	0	0.0%	0	0.0%	2	40.0%		
	14th	0	0	0.0%	0	0.0%	0	0.0%	0	0.0%	0	0.0%	0	0.0%	0	0.0%	0	0.0%	0	0.0%	0	0.0%	0	0.0%	0	0.0%	0	0.0%	0	0.0%	0	0.0%	0	0.0%	0	0.0%
	21st	25	4	16.0%	4	16.0%	0	0.0%	0	0.0%	0	0.0%	1	4.0%	0	0.0%	0	0.0%	1	4.0%	12	48.0%	0	0.0%	0	0.0%	0	0.0%	0	0.0%	1	4.0%	2	8.0%		
	22nd	1	0	0.0%	1	100.0%	0	0.0%	0	0.0%	0	0.0%	0	0.0%	0	0.0%	0	0.0%	0	0.0%	0	0.0%	0	0.0%	0	0.0%	0	0.0%	0	0.0%	0	0.0%	0	0.0%	0	0.0%
Western Total		39	6	15%	7	17.9%	1	2.6%	0	0.0%	0	0.0%	1	2.6%	0	0.0%	0	0.0%	3	7.7%	14	36%	0	0.0%	0	0.0%	0	0.0%	0	0.0%	1	2.6%	6	15%		
Individual RD Totals		446	112	25%	55	12%	38	8.5%	0	0.0%	0	0.0%	13	2.9%	0	0.0%	1	0.2%	49	11%	126	28%	1	0.2%	0	0.0%	0	0.0%	0	0.0%	2	0.4%	1	0.2%	48	11%
Statewide Totals		446	167	37.4%	38	8.5%	14	3.1%	0	0.0%	0	0.0%	175	39.2%	1	0.2%	0	0.0%	1	0.2%	0	0.0%	0	0.0%	0	0.0%	3	0.7%	48	11%						

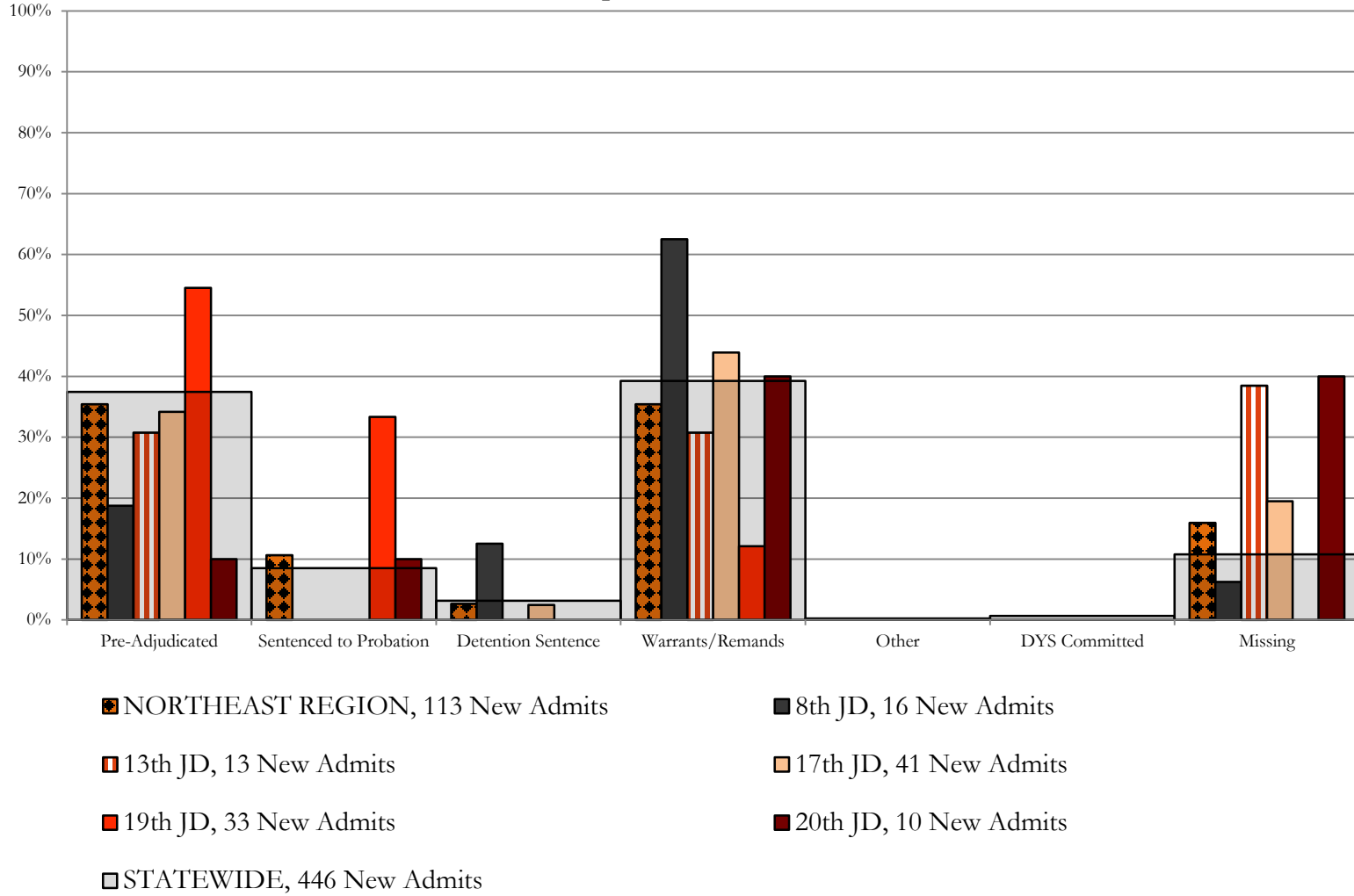
Central Region CYDC Reason Detained by Judicial District April 2018 New Admits



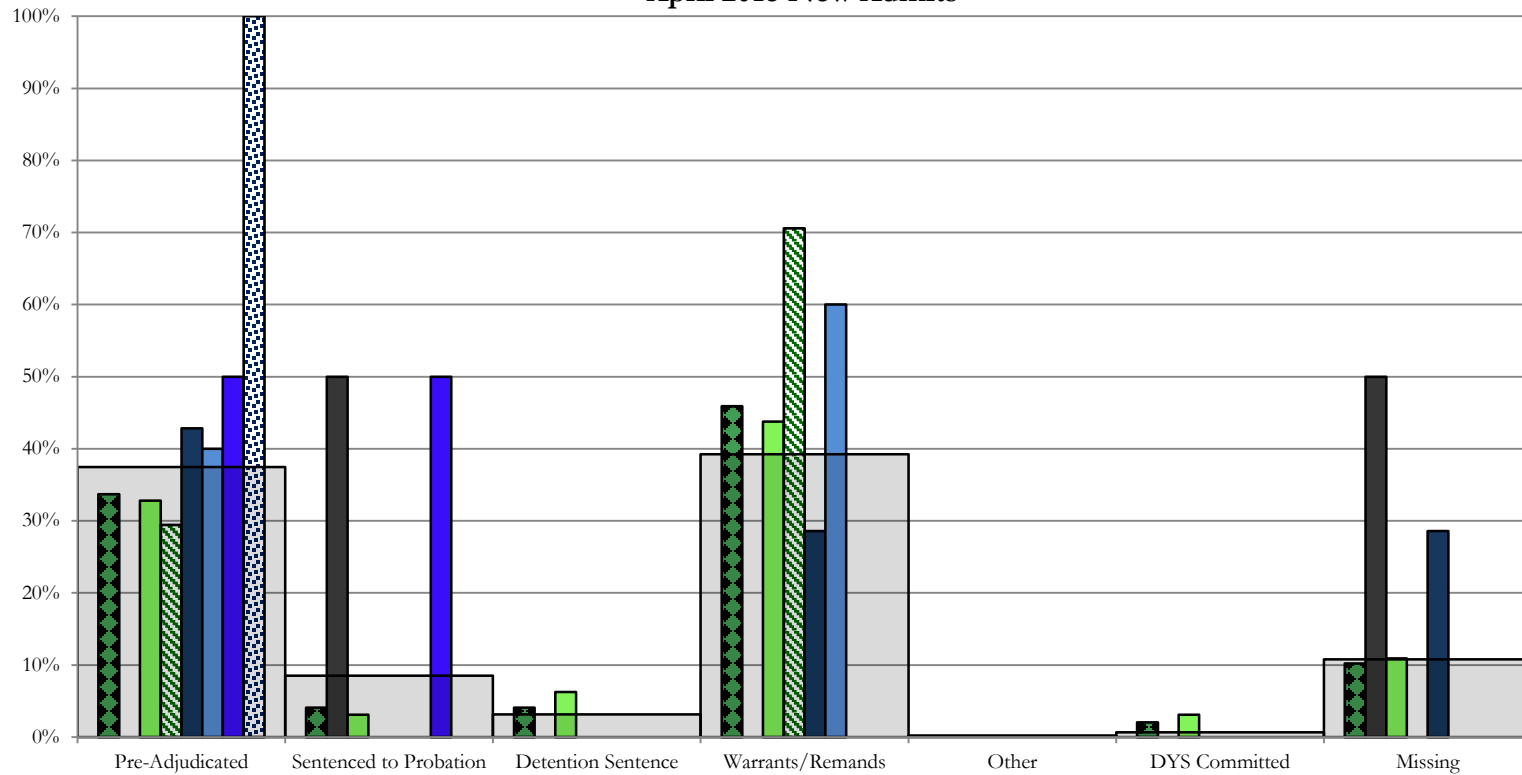
Northeast Region

CYDC Reason Detained by Judicial District

April 2018 New Admits



Southern Region CYDC Reason Detained by Judicial District April 2018 New Admits



■ SOUTHERN REGION, 98 New Admits

■ 4th JD, 64 New Admits

■ 11th JD, 7 New Admits

■ 15th JD, 2 New Admits

■ STATEWIDE, 446 New Admits

■ 3rd JD, 2 New Admits

■ 10th JD, 17 New Admits

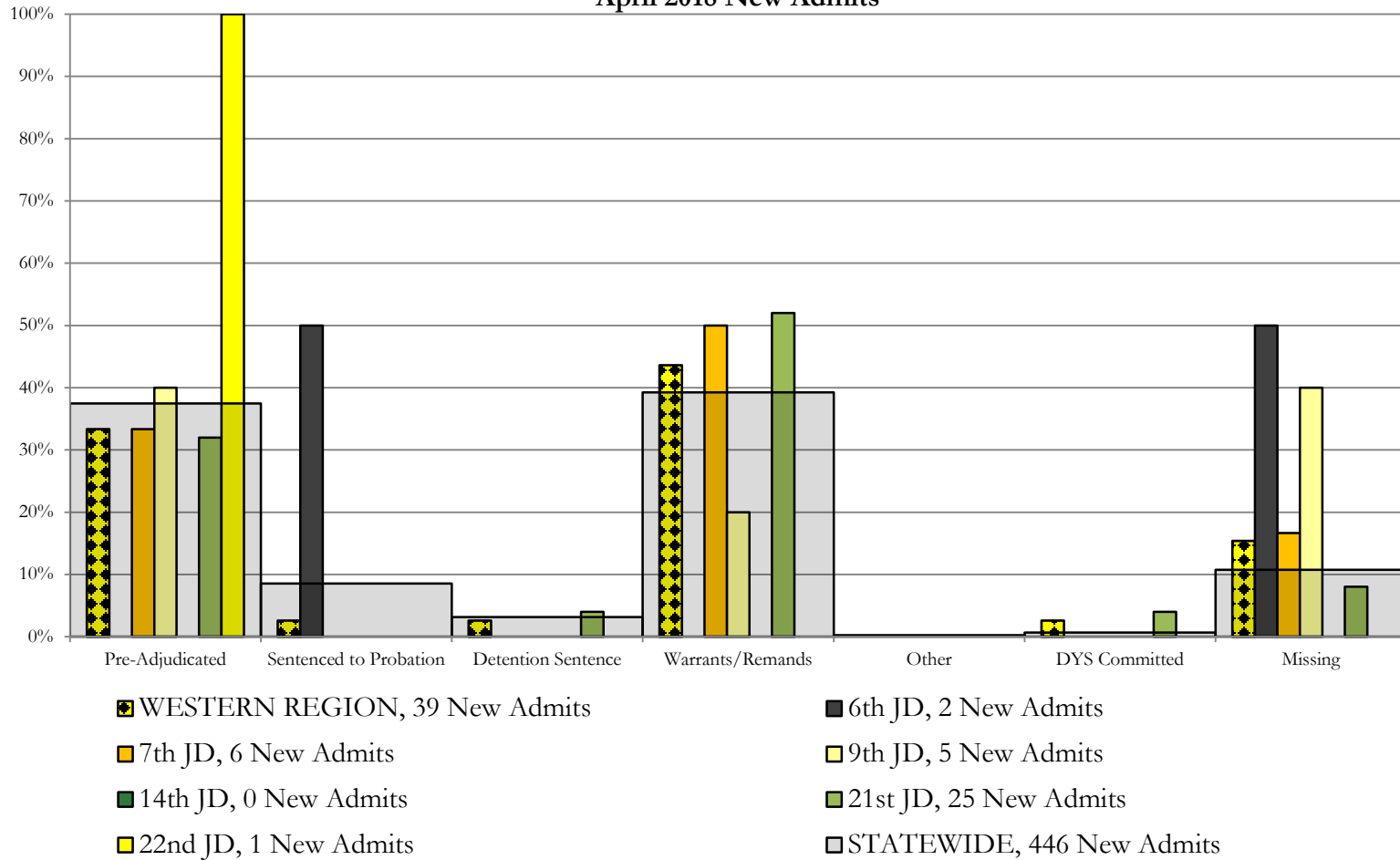
■ 12th JD, 5 New Admits

■ 16th JD, 1 New Admits

Western Region

CYDC Reason Detained by Judicial District

April 2018 New Admits



April 2018 CYDC Supplemental Report

DYS Detention Maximum Youth Served by Judicial District¹

Region	JD	Detention Capacity	Detention ADP		Maximum Youth Served on a Single Day ^{2,3}			
			April 2018	YTD	April 2018		YTD	
					Number of Youth	% of Detention Capacity	Number of Youth	% of Detention Capacity
<i>Central Region</i>								
	1st	37	31.3	29.2	38	102.7%	40	108.1%
	2nd	64	42.3	40.4	48	75.0%	60	93.8%
	5th	4	2.1	1.5	3	75.0%	6	150.0%
	18th	61	46.5	41.6	54	88.5%	57	93.4%
Central Region		166	122.3	112.7	134	80.7%	136	81.9%
<i>Northeast Region</i>								
	8th	21	8.8	10.8	11	52.4%	18	85.7%
	13th	5	5.8	4.3	9	180.0%	9	180.0%
	17th	30	22.6	22.6	26	86.7%	30	100.0%
	19th	25	9.8	14.2	16	64.0%	28	112.0%
	20th	13	6.4	6.2	9	69.2%	13	100.0%
Northeast Region		94	53.3	58.1	63	67.0%	77	81.9%
<i>Southern Region</i>								
	3rd	2	1.6	0.8	2	100.0%	3	150.0%
	4th	51	49.1	45.5	55	107.8%	55	107.8%
	10th	13	7.2	10.9	11	84.6%	19	146.2%
	11th	8	0.9	2.7	4	50.0%	10	125.0%
	12th	4	1.8	1.8	3	75.0%	5	125.0%
	15th	2	0.7	1.2	2	100.0%	3	150.0%
	16th	3	1.1	1.6	2	66.7%	4	133.3%
Southern Region		83	62.3	64.6	72	86.7%	78	94.0%
<i>Western Region</i>								
	6th	5	2.3	2.9	3	60.0%	7	140.0%
	7th	7	2.4	3.3	4	57.1%	8	114.3%
	9th	6	2.8	2.9	5	83.3%	8	133.3%
	14th	3	1.3	1.0	2	66.7%	4	133.3%
	21st	14	9.6	12.9	14	100.0%	19	135.7%
	22nd	4	0.5	2.8	2	50.0%	6	150.0%
Western Region		39	18.9	25.9	25	64.1%	37	94.9%
<i>Missing JD or Multiple JDs</i>			0.5	1.6				
Statewide		382	257.2	262.8	276	72.3%	302	79.1%

¹ Maximum youth served is the highest number of youth in detention on a single day during the month or fiscal year.

² Regional figures are not the sum of judicial districts, but represent the maximum count on one day for the entire region.

³ State figures are not the sum of regional figures, but represent the maximum count on one day for the entire state.

April 2018 CYDC Supplemental Report

CYDC Community ADP by Judicial District

Region	JD	Committed		Diversion		ICJ		Municipal		Pre-Adjudicated		Sentenced		VCO		Total	
		April	YTD	April	YTD	April	YTD	April	YTD	April	YTD	April	YTD	April	YTD	April	YTD
<i>Central Region</i>																	
	1st	0.1	0.0	3.9	1.2	0.0	0.0	6.2	8.2	233.7	237.5	24.0	25.3	0.0	0.0	267.9	272.2
	2nd	1.0	0.6	0.0	0.0	1.0	0.6	0.0	1.2	118.8	158.0	36.8	28.6	0.0	0.0	157.6	189.0
	5th	0.0	0.0	15.0	10.1	0.0	0.0	0.0	0.0	11.2	8.0	32.4	34.4	0.0	0.0	58.6	52.5
	18th	0.2	0.7	0.0	0.0	0.0	0.0	0.0	0.0	261.7	246.5	27.5	27.4	0.0	0.9	289.4	275.5
Central Total		1.3	1.3	18.9	11.3	1.0	0.6	6.2	9.4	625.5	650.0	120.6	115.8	0.0	0.9	773.5	789.2
<i>Northeast Region</i>																	
	8th	0.0	0.0	4.0	1.0	0.0	0.0	0.0	0.0	55.1	45.6	29.0	33.2	0.0	0.0	88.1	79.8
	13th	0.0	0.0	0.0	0.0	0.0	0.0	0.0	0.0	17.3	13.5	2.2	2.4	5.0	5.2	24.5	21.1
	17th	3.0	2.5	0.0	0.0	0.0	0.0	0.0	0.0	198.6	171.2	56.4	56.2	0.0	0.0	258.0	229.9
	19th	1.5	0.3	2.0	1.5	0.0	0.0	0.0	1.3	51.2	52.3	23.9	27.2	3.0	2.3	81.6	84.8
	20th	3.0	1.7	36.0	17.0	0.0	0.0	0.0	0.0	118.8	68.2	36.1	21.2	21.0	9.6	214.9	117.6
Northeast Total		7.5	4.5	42.0	19.4	0.0	0.0	0.0	1.3	441.0	350.8	147.6	140.2	29.0	17.0	667.2	533.3
<i>Southern Region</i>																	
	3rd	0.0	0.0	0.0	0.0	0.0	0.0	0.0	0.0	17.3	12.6	7.1	6.5	0.0	0.0	24.4	19.0
	4th	2.8	1.6	0.0	0.0	0.0	0.0	113.5	116.9	141.3	111.6	47.0	46.6	0.0	0.0	304.7	276.6
	10th	0.0	1.7	0.0	0.0	1.0	1.0	2.0	2.1	26.4	19.3	11.3	19.9	1.2	1.9	41.9	45.8
	11th	1.0	1.1	0.0	0.1	0.0	0.0	11.0	7.9	20.1	13.4	27.7	20.1	2.0	1.4	61.8	44.0
	12th	0.0	0.0	4.9	2.9	0.0	0.0	2.0	2.5	15.2	11.5	0.4	1.1	0.0	0.0	22.6	18.1
	15th	0.0	0.0	2.6	1.0	0.0	0.0	0.0	0.0	4.4	4.3	15.9	10.7	0.0	0.0	22.9	16.0
	16th	0.0	0.0	0.0	0.0	0.0	0.0	0.0	0.0	7.1	9.4	4.4	6.2	12.9	14.0	24.3	29.6
Southern Total		3.8	4.4	7.5	4.1	1.0	1.0	128.5	129.4	231.7	182.1	113.8	111.1	16.1	17.2	502.5	449.2
<i>Western Region</i>																	
	6th	0.0	0.0	0.0	0.0	0.0	0.0	0.0	0.0	4.5	8.7	0.4	0.7	0.0	0.0	4.9	9.3
	7th	0.0	0.0	9.9	5.8	0.0	0.0	0.0	0.0	19.0	18.8	24.2	21.9	0.0	0.0	53.1	46.6
	9th	0.0	0.0	0.0	0.0	0.0	0.0	2.0	3.7	20.2	14.0	1.0	1.6	0.0	0.0	23.2	19.4
	14th	0.0	0.1	2.8	5.1	0.0	0.0	0.0	0.0	3.1	3.6	2.3	0.7	0.0	0.0	8.2	9.4
	21st	0.0	0.0	0.0	0.0	0.0	0.0	0.0	0.0	42.9	39.6	14.9	15.4	0.0	0.0	57.8	55.0
	22nd	0.0	0.0	2.0	1.2	0.0	0.0	0.0	0.0	7.7	7.8	5.0	4.5	0.0	0.0	14.7	13.4
Western Total		0.0	0.1	14.7	12.1	0.0	0.0	2.0	3.7	97.4	92.4	47.9	44.8	0.0	0.0	162.0	153.0
Statewide Total		12.7	10.3	83.0	46.9	2.0	1.6	136.8	143.7	1395.6	1275.3	429.9	411.8	45.1	35.1	2105.2	1924.8