

March 2018 FY 2017-2018 SB94 JDSAG SUPPLEMENTAL REPORT

Prepared by the Division of Youth Services (DYS)
Data Management and Analysis
April 25, 2018



COLORADO

**Office of Children,
Youth & Families**

Division of Youth Services

March 2018 SB94 Supplemental Report

DYS Commitment ADP & New Commitments by Judicial District

Region	JD ¹	2018 Population Estimates ²	ADP ³		New Commitments		
			March 2018	YTD	March 2018	YTD	YTD Rate ⁴
<i>Central Region</i>							
	1st	56,139	85.4	80.1	2	38	6.8
	2nd	65,275	97.9	97.1	2	42	6.4
	5th	10,694	7.0	7.4	1	1	0.9
	18th	122,766	81.2	75.3	4	42	3.4
Central Total		254,874	271.4	260.0	9	123	4.8
<i>Northeast Region</i>							
	8th	34,025	42.0	40.0	2	19	5.6
	13th	8,531	8.5	7.8	0	3	3.5
	17th	73,588	63.3	62.7	2	21	2.9
	19th	37,441	54.7	58.0	2	25	6.7
	20th	33,056	7.7	8.9	1	2	0.6
Northeast Total		186,641	176.3	177.4	7	70	3.8
<i>Southern Region</i>							
	3rd	1,785	0.0	0.5	0	0	0.0
	4th	83,158	97.7	96.2	2	48	5.8
	10th	18,165	26.3	32.0	0	7	3.9
	11th	7,111	6.7	6.2	0	3	4.2
	12th	5,276	4.6	6.0	0	1	1.9
	15th	2,117	4.9	5.9	0	6	28.3
	16th	2,827	0.1	0.0	1	1	3.5
Southern Total		120,439	140.3	146.8	3	66	5.5
<i>Western Region</i>							
	6th	6,710	5.7	8.3	0	4	6.0
	7th	10,675	7.1	8.2	1	5	4.7
	9th	9,607	7.0	6.1	0	2	2.1
	14th	5,587	2.7	2.3	0	1	1.8
	21st	16,016	33.5	34.0	1	20	12.5
	22nd	3,144	6.9	5.1	1	5	15.9
Western Total		51,739	62.8	64.1	3	37	7.2
Statewide Total		613,693	650.8	648.2	22	296	4.8

¹ JD represents the judicial district in which the client was committed. Regional totals are a sum of their respective judicial districts. Regional totals reported here may differ slightly from those reported in the Monthly Population Report, where region is defined by active caseloads.

² Source: DOLA 2018 Estimates.

³ Due to rounding, totals shown may not be an exact sum of the subtotals.

⁴ Per 10,000 youth in the population.

March 2018 SB94 Supplemental Report

DYS Detention ADP and New Detention Admissions by Judicial District

Region	JD	2018 Population Estimates ¹	ADP		New Admits		YTD New Admit Rate ²
			March 2018	YTD	March 2018	YTD	
<i>Central Region</i>							
	1st	56,139	30.0	29.0	57	480	85.5
	2nd	65,275	40.3	40.2	79	645	98.8
	5th	10,694	1.6	1.4	2	28	26.2
	18th	122,766	49.0	41.1	85	782	63.7
Central Total		254,874	120.9	111.6	223	1,935	75.9
<i>Northeast Region</i>							
	8th	34,025	13.6	11.0	21	209	61.4
	13th	8,531	3.7	4.1	9	51	59.8
	17th	73,588	21.6	22.6	52	392	53.3
	19th	37,441	10.7	13.7	29	302	80.7
	20th	33,056	6.6	6.2	15	102	30.9
Northeast Total		186,641	56.2	57.6	126	1,056	56.6
<i>Southern Region</i>							
	3rd	1,785	1.5	0.7	1	19	106.4
	4th	83,158	46.2	45.2	66	539	64.8
	10th	18,165	9.6	11.3	21	187	102.9
	11th	7,111	3.1	2.9	4	68	95.6
	12th	5,276	0.0	1.8	1	25	47.4
	15th	2,117	0.2	1.3	0	14	66.1
	16th	2,827	1.9	1.7	0	24	84.9
Southern Total		120,439	62.4	64.9	93	876	72.7
<i>Western Region</i>							
	6th	6,710	2.2	2.9	0	36	53.7
	7th	10,675	2.0	3.4	8	49	45.9
	9th	9,607	3.2	3.0	4	40	41.6
	14th	5,587	1.5	1.0	2	17	30.4
	21st	16,016	9.6	13.3	20	185	115.5
	22nd	3,144	2.1	3.0	1	24	76.3
Western Total		51,739	20.6	26.6	35	351	67.8
<i>Missing JD or Multiple JDs</i>			<i>0.6</i>	<i>1.7</i>			
Statewide Total		613,693	260.8	262.4	477	4,218	68.7

¹ Source: DOLA 2018 Estimates.

² Per 10,000 youth in the population.

March 2018 SB94 Supplemental Report

DYS Detention LOS by Judicial District				
Region	JD	YTD Detention Releases	YTD LOS (days)	LOS (days) Compared to State AVG
<i>Central Region</i>				
	1st	464	15.0	-1.6
	2nd	641	15.7	-0.9
	5th	26	8.8	-7.8
	18th	761	13.6	-2.9
Central Total		1,892	14.6	-2.0
<i>Northeast Region</i>				
	8th	210	14.3	-2.2
	13th	50	23.6	7.0
	17th	392	15.6	-0.9
	19th	310	11.3	-5.2
	20th	101	16.7	0.2
Northeast Total		1,063	14.6	-2.0
<i>Southern Region</i>				
	3rd	20	7.1	-9.4
	4th	527	22.0	5.5
	10th	191	15.0	-1.6
	11th	68	9.6	-6.9
	12th	27	18.7	2.1
	15th	15	27.9	11.3
	16th	24	16.6	0.0
Southern Total		872	19.0	2.5
<i>Western Region</i>				
	6th	39	21.3	4.8
	7th	48	17.7	1.1
	9th	38	18.5	2.0
	14th	14	13.3	-3.2
	21st	186	17.6	1.1
	22nd	23	28.5	12.0
Western Total		348	18.7	2.1
Statewide Total		33	16.6	-

March 2018 SB94 JDSAG Supplemental Report

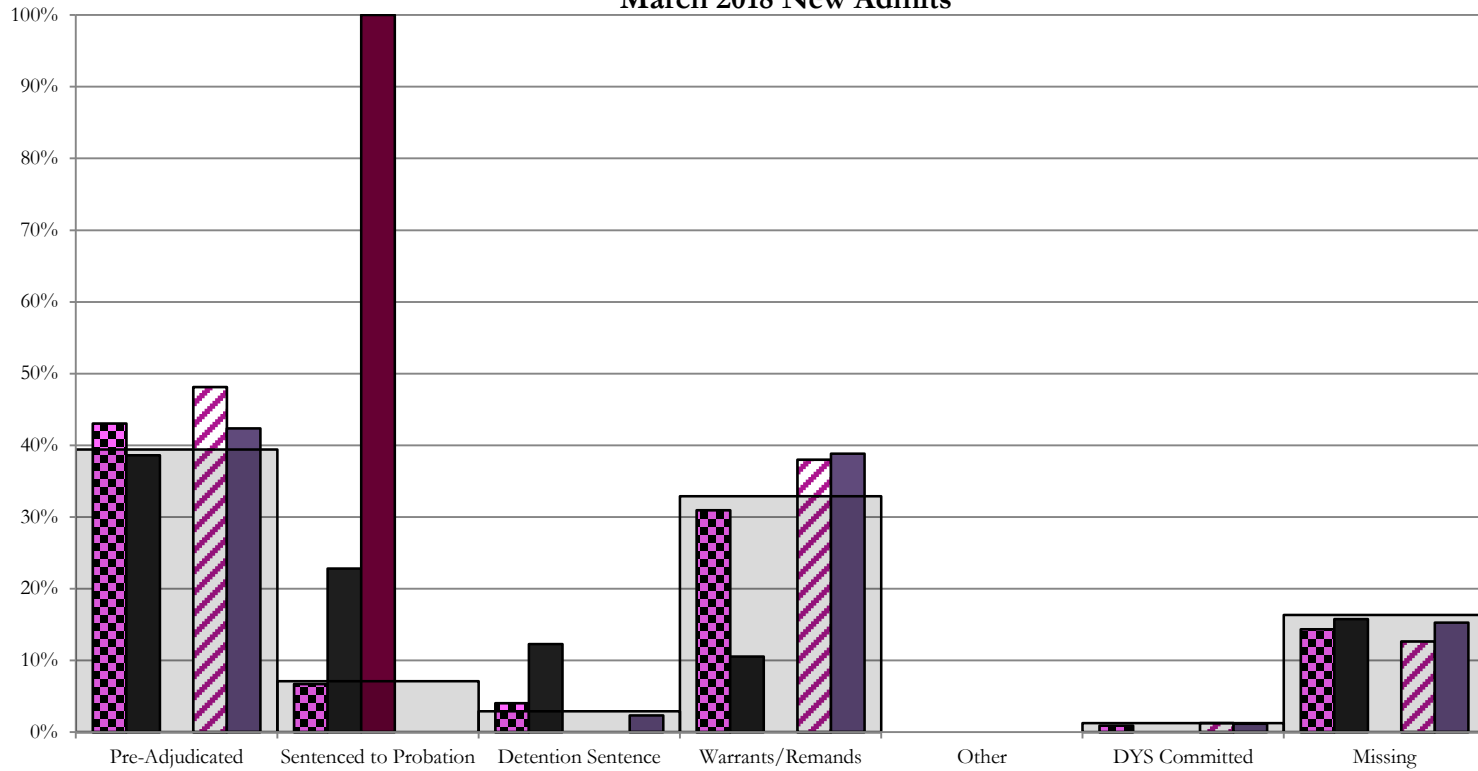
SB94 Reason Detained (RD) by Judicial District

Region	JD	Pre-Adjudicated				Sentenced to Probation				Detention Sentence								Warrants/Remands				Other				DYS Committed		Missing										
		Felony		Misdemeanor		Technical Violator		New Charges		Probation Sentence		Detention Sentence		Valid Court Order (VCO) Truancy		Awaiting DSS (Social Services) Placement		Failure to Appear (FTA)		Failure to Comply (FTC)		Interstate Compact on Juveniles (ICJ) Hold		Immigration Hold		No Bond Hold		Out-of-Country Warrant		Institutional		Parole		Missing				
		#	%	#	%	#	%	#	%	#	%	#	%	#	%	#	%	#	%	#	%	#	%	#	%	#	%	#	%	#	%	#	%	#	%			
Central Region																																						
	1st	57	16	28.1%	6	10.5%	13	22.8%	0	0.0%	0	0.0%	7	12.3%	0	0.0%	0	0.0%	6	10.5%	0	0.0%	0	0.0%	0	0.0%	0	0.0%	0	0.0%	0	0.0%	0	0.0%	0	0.0%	9	15.8%
	2nd	79	31	39.2%	7	8.9%	0	0.0%	0	0.0%	0	0.0%	0	0.0%	0	0.0%	6	7.6%	24	30.4%	0	0.0%	0	0.0%	0	0.0%	0	0.0%	0	0.0%	0	0.0%	1	1.3%	10	12.7%		
	5th	2	0	0.0%	0	0.0%	2	100.0%	0	0.0%	0	0.0%	0	0.0%	0	0.0%	0	0.0%	0	0.0%	0	0.0%	0	0.0%	0	0.0%	0	0.0%	0	0.0%	0	0.0%	0	0.0%	0	0.0%	0	0.0%
	18th	85	19	22.4%	17	20.0%	0	0.0%	0	0.0%	0	0.0%	2	2.4%	0	0.0%	0	0.0%	8	9.4%	25	29.4%	0	0.0%	0	0.0%	0	0.0%	0	0.0%	1	1.2%	1	0.4%	13	15.3%		
Central Total		223	66	30%	30	13%	15	6.7%	0	0.0%	0	0.0%	9	4.0%	0	0.0%	0	0.0%	20	9%	49	22%	0	0.0%	0	0.0%	0	0.0%	0	0.0%	1	0.4%	1	0.4%	32	14.3%		
Northeast Region																																						
	8th	21	4	19.0%	4	19.0%	0	0.0%	0	0.0%	0	0.0%	1	4.8%	0	0.0%	0	0.0%	8	38.1%	0	0.0%	0	0.0%	0	0.0%	0	0.0%	0	0.0%	0	0.0%	0	0.0%	4	19.0%		
	13th	9	0	0.0%	1	11.1%	0	0.0%	0	0.0%	0	0.0%	0	0.0%	0	0.0%	1	11.1%	3	33.3%	0	0.0%	0	0.0%	0	0.0%	0	0.0%	0	0.0%	0	0.0%	0	0.0%	4	44.4%		
	17th	52	10	19.2%	6	11.5%	0	0.0%	0	0.0%	0	0.0%	1	1.9%	0	0.0%	0	0.0%	3	5.8%	18	34.6%	0	0.0%	0	0.0%	0	0.0%	0	0.0%	0	0.0%	0	0.0%	14	26.9%		
	19th	29	12	41.4%	4	13.8%	8	27.6%	0	0.0%	0	0.0%	0	0.0%	0	0.0%	1	3.4%	4	13.8%	0	0.0%	0	0.0%	0	0.0%	0	0.0%	0	0.0%	0	0.0%	0	0.0%	0	0.0%		
	20th	15	0	0.0%	0	0.0%	2	13.3%	0	0.0%	0	0.0%	0	0.0%	0	0.0%	1	6.7%	0	0.0%	0	0.0%	0	0.0%	0	0.0%	0	0.0%	0	0.0%	0	0.0%	0	0.0%	12	80.0%		
Northeast Total		126	26	21%	15	12%	10	7.9%	0	0.0%	0	0.0%	2	1.6%	0	0.0%	1	0.8%	5	4.0%	33	26%	0	0.0%	0	0.0%	0	0.0%	0	0.0%	0	0.0%	0	0.0%	34	27%		
Southern Region																																						
	3rd	1	0	0.0%	0	0.0%	0	0.0%	0	0.0%	0	0.0%	0	0.0%	0	0.0%	0	0.0%	0	0.0%	0	0.0%	0	0.0%	0	0.0%	0	0.0%	0	0.0%	0	0.0%	0	0.0%	1	100.0%		
	4th	66	26	39.4%	3	4.5%	0	0.0%	5	7.6%	0	0.0%	1	1.5%	0	0.0%	0	0.0%	2	3.0%	21	31.8%	0	0.0%	0	0.0%	0	0.0%	4	6.1%	0	0.0%	4	6.1%	0	0.0%		
	10th	21	3	14.3%	4	19.0%	0	0.0%	4	19.0%	0	0.0%	0	0.0%	0	0.0%	0	0.0%	4	19.0%	6	28.6%	0	0.0%	0	0.0%	0	0.0%	0	0.0%	0	0.0%	0	0.0%	0	0.0%		
	11th	4	0	0.0%	1	25.0%	0	0.0%	0	0.0%	0	0.0%	0	0.0%	0	0.0%	0	0.0%	2	50.0%	0	0.0%	0	0.0%	0	0.0%	0	0.0%	0	0.0%	0	0.0%	1	25.0%	0	0.0%		
	12th	1	0	0.0%	0	0.0%	0	0.0%	0	0.0%	0	0.0%	0	0.0%	0	0.0%	1	100.0%	0	0.0%	0	0.0%	0	0.0%	0	0.0%	0	0.0%	0	0.0%	0	0.0%	0	0.0%	0	0.0%		
	15th	0	0	0.0%	0	0.0%	0	0.0%	0	0.0%	0	0.0%	0	0.0%	0	0.0%	0	0.0%	0	0.0%	0	0.0%	0	0.0%	0	0.0%	0	0.0%	0	0.0%	0	0.0%	0	0.0%	0	0.0%		
	16th	0	0	0.0%	0	0.0%	0	0.0%	0	0.0%	0	0.0%	0	0.0%	0	0.0%	0	0.0%	0	0.0%	0	0.0%	0	0.0%	0	0.0%	0	0.0%	0	0.0%	0	0.0%	0	0.0%	0	0.0%		
Southern Total		93	29	31%	8	9%	0	0.0%	9	9.7%	0	0.0%	1	1.1%	0	0.0%	0	0.0%	7	8%	29	31%	0	0.0%	0	0.0%	0	0.0%	0	0.0%	4	4.3%	0	0.0%	6	6%		
Western Region																																						
	6th	0	0	0.0%	0	0.0%	0	0.0%	0	0.0%	0	0.0%	0	0.0%	0	0.0%	0	0.0%	0	0.0%	0	0.0%	0	0.0%	0	0.0%	0	0.0%	0	0.0%	0	0.0%	0	0.0%	0	0.0%		
	7th	8	2	25.0%	1	12.5%	0	0.0%	0	0.0%	0	0.0%	0	0.0%	0	0.0%	2	25.0%	1	12.5%	0	0.0%	0	0.0%	0	0.0%	0	0.0%	0	0.0%	0	0.0%	0	0.0%	2	25.0%		
	9th	4	1	25.0%	1	25.0%	0	0.0%	0	0.0%	0	0.0%	0	0.0%	0	0.0%	0	0.0%	1	25.0%	0	0.0%	0	0.0%	0	0.0%	0	0.0%	0	0.0%	0	0.0%	1	25.0%	0	0.0%		
	14th	2	0	0.0%	0	0.0%	0	0.0%	0	0.0%	0	0.0%	0	0.0%	0	0.0%	0	0.0%	0	0.0%	0	0.0%	0	0.0%	0	0.0%	0	0.0%	0	0.0%	0	0.0%	2	100.0%				
	21st	20	5	25.0%	4	20.0%	0	0.0%	0	0.0%	0	0.0%	1	5.0%	0	0.0%	0	0.0%	1	5.0%	9	45.0%	0	0.0%	0	0.0%	0	0.0%	0	0.0%	0	0.0%	0	0.0%	0	0.0%		
	22nd	1	0	0.0%	0	0.0%	0	0.0%	0	0.0%	0	0.0%	0	0.0%	0	0.0%	0	0.0%	0	0.0%	0	0.0%	0	0.0%	0	0.0%	0	0.0%	0	0.0%	0	0.0%	1	100.0%				
Western Total		35	8	23%	6	17.1%	0	0.0%	0	0.0%	0	0.0%	1	2.9%	0	0.0%	0	0.0%	3	8.6%	11	31%	0	0.0%	0	0.0%	0	0.0%	0	0.0%	0	0.0%	0	0.0%	6	17%		
Individual RD Totals		477	129	27%	59	12%	25	5.2%	9	1.9%	0	0.0%	13	2.7%	0	0.0%	1	0.2%	35	7%	122	26%	0	0.0%	0	0.0%	0	0.0%	0	0.0%	5	1.0%	1	0.2%	78	16%		
Statewide Totals		477	188	39.4%	34	7.1%	0	0.0%	0	0.0%	14	2.9%	0	0.0%	1	0.2%	35	7.3%	157	32.9%	0	0.0%	0	0.0%	0	0.0%	0	0.0%	6	1.3%	1	0.2%	78	16%				

Central Region

SB94 Reason Detained by Judicial District

March 2018 New Admits

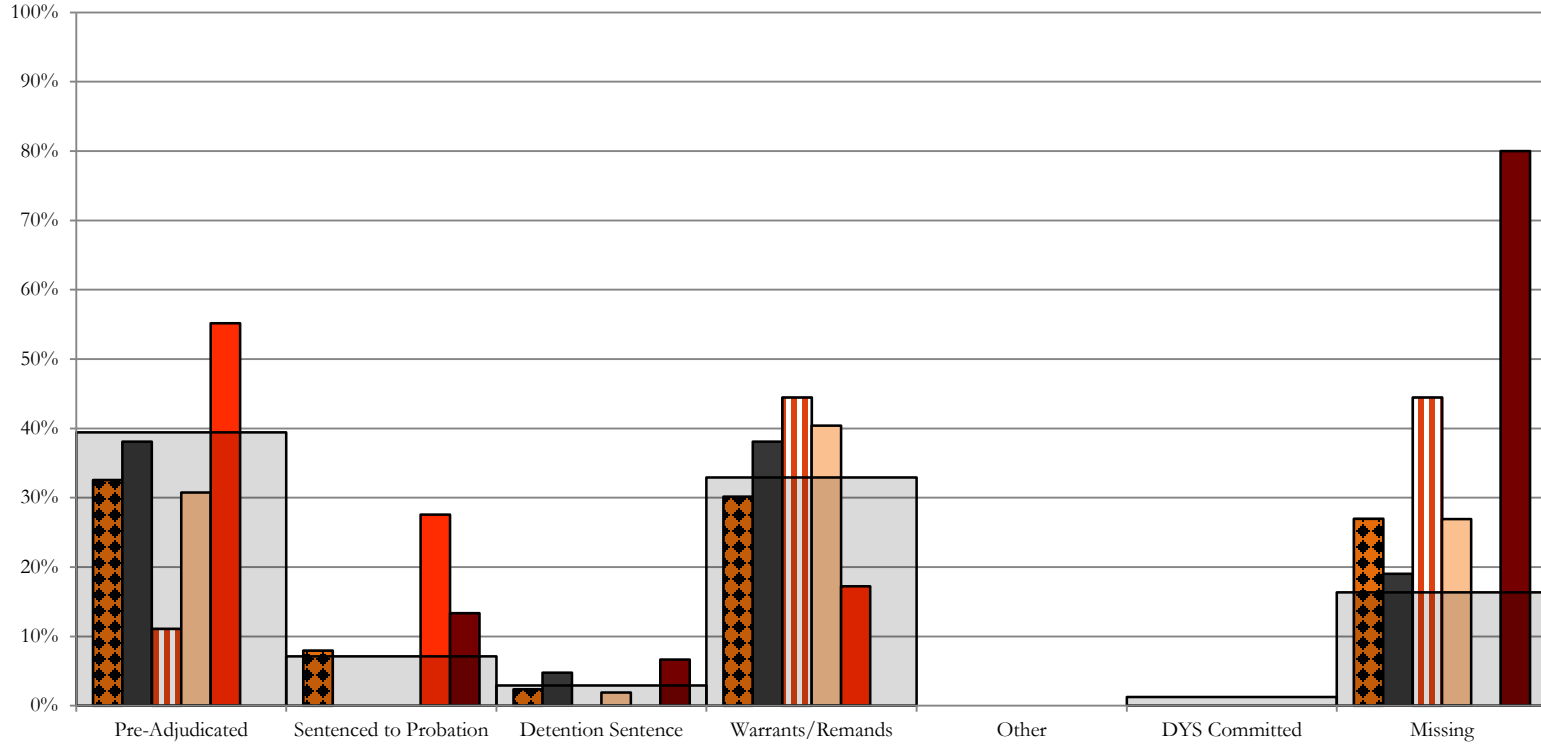


- CENTRAL REGION, 223 New Admits
- 5th JD, 2 New Admits
- 18th JD, 85 New Admits
- 1st JD, 57 New Admits
- 2nd JD, 79 New Admits
- STATEWIDE, 477 New Admits

Northeast Region

SB94 Reason Detained by Judicial District

March 2018 New Admits



■ NORTHEAST REGION, 126 New Admits

■ 8th JD, 21 New Admits

■ 13th JD, 9 New Admits

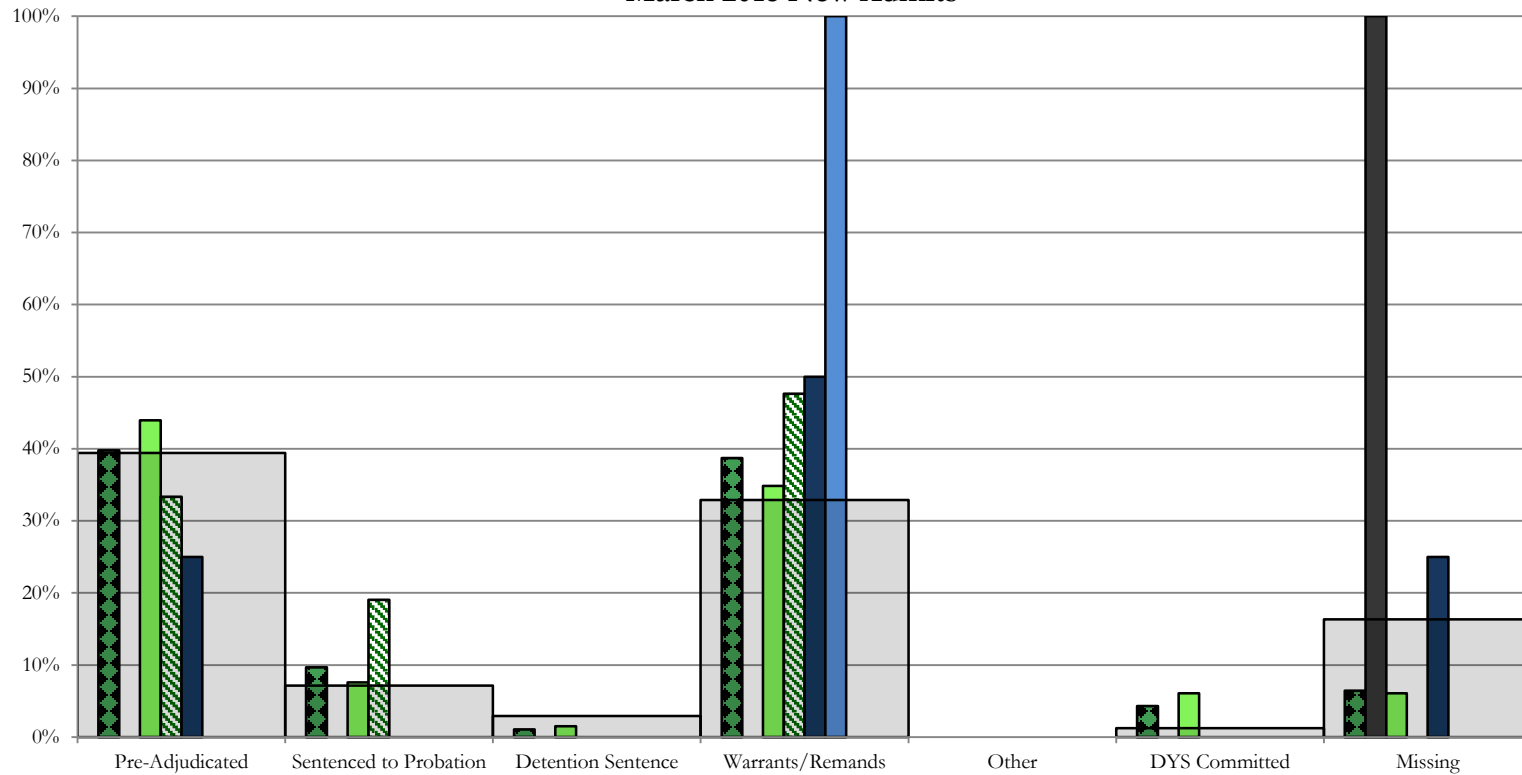
■ 17th JD, 52 New Admits

■ 19th JD, 29 New Admits

■ 20th JD, 15 New Admits

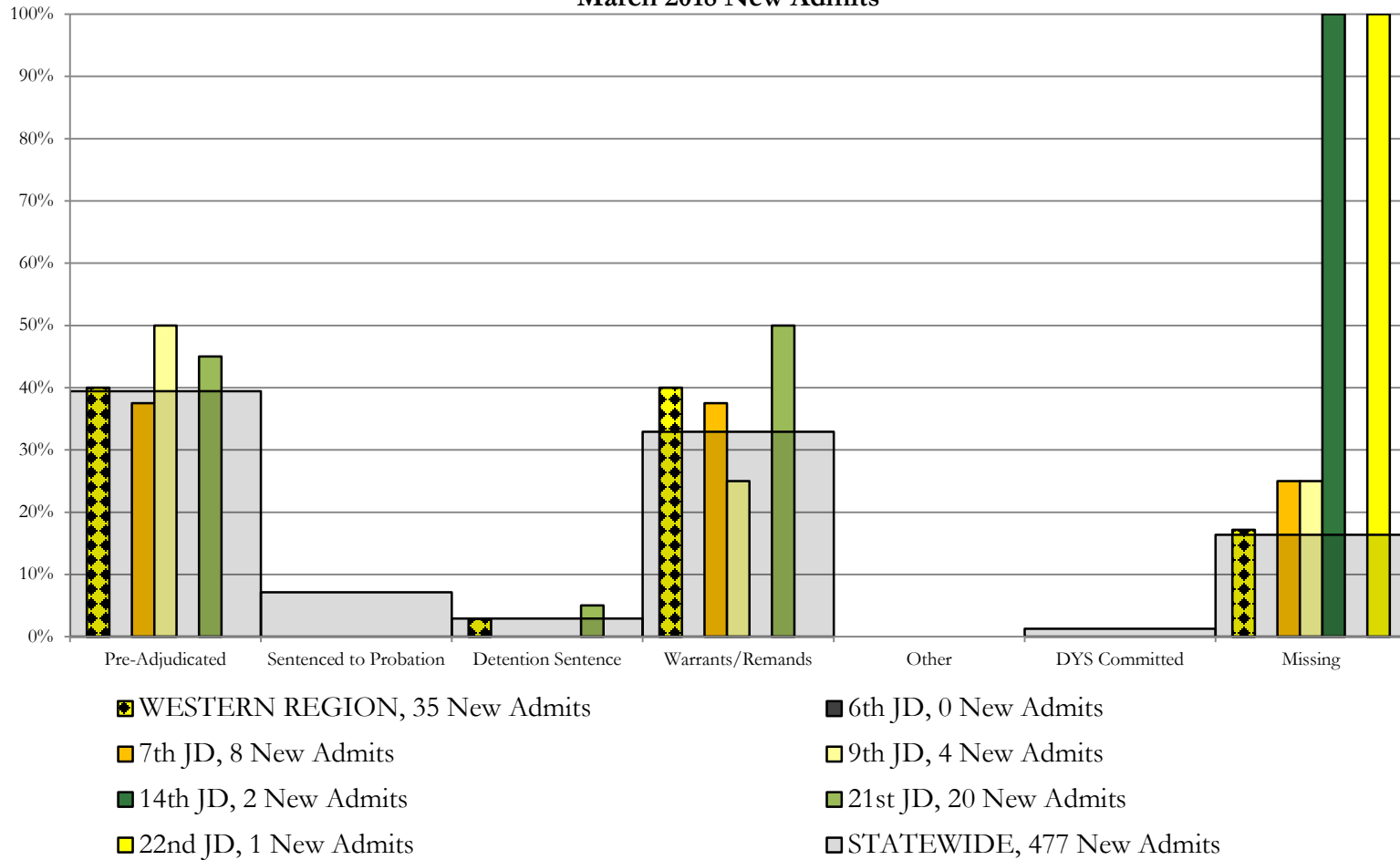
■ STATEWIDE, 477 New Admits

Southern Region SB94 Reason Detained by Judicial District March 2018 New Admits



- SOUTHERN REGION, 93 New Admits
- 4th JD, 66 New Admits
- 11th JD, 4 New Admits
- 15th JD, 0 New Admits
- STATEWIDE, 477 New Admits
- 3rd JD, 1 New Admits
- 10th JD, 21 New Admits
- 12th JD, 1 New Admits
- 16th JD, 0 New Admits

Western Region SB94 Reason Detained by Judicial District March 2018 New Admits



March 2018 SB94 Supplemental Report

DYS Detention Maximum Youth Served by Judicial District¹

Region	JD	Detention Capacity	Detention ADP		Maximum Youth Served on a Single Day ^{2,3}			
			March 2018	YTD	March 2018		YTD	
					Number of Youth	% of Detention Capacity	Number of Youth	% of Detention Capacity
<i>Central Region</i>								
	1st	37	30.0	29.0	36	97.3%	40	108.1%
	2nd	64	40.3	40.2	53	82.8%	60	93.8%
	5th	4	1.6	1.4	3	75.0%	6	150.0%
	18th	61	49.0	41.1	57	93.4%	57	93.4%
Central Region		166	120.9	111.6	131	78.9%	136	81.9%
<i>Northeast Region</i>								
	8th	21	13.6	11.0	18	85.7%	18	85.7%
	13th	5	3.7	4.1	6	120.0%	7	140.0%
	17th	30	21.6	22.6	29	96.7%	30	100.0%
	19th	25	10.7	13.7	16	64.0%	28	112.0%
	20th	13	6.6	6.2	13	100.0%	13	100.0%
Northeast Region		94	56.2	57.6	69	73.4%	77	81.9%
<i>Southern Region</i>								
	3rd	2	1.5	0.7	2	100.0%	3	150.0%
	4th	51	46.2	45.2	51	100.0%	54	105.9%
	10th	13	9.6	11.3	14	107.7%	19	146.2%
	11th	8	3.1	2.9	7	87.5%	10	125.0%
	12th	4	0.0	1.8	1	25.0%	5	125.0%
	15th	2	0.2	1.3	1	50.0%	3	150.0%
	16th	3	1.9	1.7	3	100.0%	4	133.3%
Southern Region		83	62.4	64.9	72	86.7%	78	94.0%
<i>Western Region</i>								
	6th	5	2.2	2.9	3	60.0%	7	140.0%
	7th	7	2.0	3.4	4	57.1%	8	114.3%
	9th	6	3.2	3.0	6	100.0%	8	133.3%
	14th	3	1.5	1.0	2	66.7%	4	133.3%
	21st	14	9.6	13.3	12	85.7%	19	135.7%
	22nd	4	2.1	3.0	3	75.0%	6	150.0%
Western Region		39	20.6	26.6	23	59.0%	37	94.9%
<i>Missing JD or Multiple JDs</i>			0.6	1.7				
Statewide		382	260.8	262.4	275	72.0%	302	79.1%

¹ Maximum youth served is the highest number of youth in detention on a single day during the month or fiscal year.

² Regional figures are not the sum of judicial districts, but represent the maximum count on one day for the entire region.

³ State figures are not the sum of regional figures, but represent the maximum count on one day for the entire state.

March 2018 SB94 Supplemental Report

SB94 Community ADP by Judicial District

Region	JD	Committed		Diversion		ICJ		Municipal		Pre-Adjudicated		Sentenced		VCO		Total	
		March	YTD	March	YTD	March	YTD	March	YTD	March	YTD	March	YTD	March	YTD	March	YTD
<i>Central Region</i>																	
	1st	0.0	0.0	3.0	0.9	0.0	0.0	16.0	8.5	288.7	242.4	29.8	25.9	0.0	0.0	337.5	277.7
	2nd	1.0	0.5	0.0	0.0	1.0	0.6	0.0	1.3	105.4	152.6	31.0	27.7	0.0	0.0	138.5	182.8
	5th	0.0	0.0	13.4	9.6	0.0	0.0	0.0	0.0	10.4	8.4	30.0	33.6	0.0	0.0	53.8	51.6
	18th	0.4	0.8	0.0	0.0	0.2	0.0	0.0	0.0	252.7	246.0	33.2	27.4	0.0	1.0	286.5	275.1
Central Total		1.4	1.3	16.4	10.5	1.2	0.6	16.0	9.9	657.2	649.5	124.0	114.6	0.0	1.0	816.2	787.3
<i>Northeast Region</i>																	
	8th	0.0	0.0	4.0	0.6	0.0	0.0	0.0	0.0	66.3	48.2	44.0	36.7	0.0	0.0	114.3	85.5
	13th	0.0	0.0	0.0	0.0	0.0	0.0	0.0	0.0	13.4	13.1	2.0	2.4	5.0	5.2	20.4	20.8
	17th	3.0	2.4	0.0	0.0	0.0	0.0	0.0	0.0	193.7	168.5	55.6	56.2	0.0	0.0	252.3	227.2
	19th	0.0	0.2	1.5	1.4	0.0	0.0	0.0	1.4	57.5	53.2	24.4	27.5	3.0	2.2	86.4	85.9
	20th	3.0	1.5	36.0	14.9	0.0	0.0	0.0	0.0	105.4	63.3	30.0	19.5	18.2	8.3	192.6	107.7
Northeast Total		6.0	4.2	41.5	17.0	0.0	0.0	0.0	1.4	436.4	346.3	155.9	142.5	26.2	15.7	666.0	527.0
<i>Southern Region</i>																	
	3rd	0.0	0.0	0.0	0.0	0.0	0.0	0.0	0.0	17.2	13.4	6.0	6.1	0.0	0.0	23.2	19.5
	4th	2.8	1.5	0.0	0.0	0.0	0.0	132.0	120.9	126.5	106.4	53.9	48.3	0.0	0.0	315.2	277.1
	10th	0.0	1.8	0.0	0.0	1.0	1.0	2.0	2.1	22.5	18.5	13.8	20.8	1.0	2.0	40.3	46.2
	11th	1.0	1.1	0.0	0.1	0.0	0.0	11.0	7.5	20.4	13.1	30.0	19.6	2.0	1.3	64.4	42.8
	12th	0.0	0.0	2.3	2.7	0.0	0.0	2.0	2.6	13.5	11.1	1.0	1.2	0.0	0.0	18.8	17.6
	15th	0.0	0.0	1.9	0.9	0.0	0.0	0.0	0.0	4.3	4.3	18.1	10.1	0.0	0.0	24.3	15.2
	16th	0.0	0.0	0.0	0.0	0.0	0.0	0.0	0.0	7.7	9.7	5.0	6.4	6.0	13.1	18.7	29.2
Southern Total		3.8	4.4	4.2	3.7	1.0	1.0	147.0	133.2	212.1	176.5	127.8	112.5	9.0	16.4	504.9	447.7
<i>Western Region</i>																	
	6th	0.0	0.0	0.0	0.0	0.0	0.0	0.0	0.0	5.0	9.1	0.0	0.7	0.0	0.0	5.0	9.8
	7th	0.0	0.0	7.0	5.2	0.0	0.0	0.0	0.0	21.4	19.0	24.2	21.3	0.0	0.0	52.7	45.6
	9th	0.0	0.0	0.0	0.1	0.0	0.0	2.0	3.9	17.0	13.4	1.1	1.7	0.0	0.0	20.1	18.9
	14th	0.0	0.1	3.0	5.3	0.0	0.0	0.0	0.0	4.0	3.7	2.0	0.4	0.0	0.0	9.0	9.5
	21st	0.0	0.0	0.0	0.0	0.0	0.0	0.0	0.0	39.6	39.4	15.4	15.2	0.0	0.0	54.9	54.6
	22nd	0.0	0.0	2.0	1.1	0.0	0.0	0.0	0.0	7.6	7.8	4.0	4.3	0.0	0.0	13.6	13.2
Western Total		0.0	0.1	12.0	11.7	0.0	0.0	2.0	3.9	94.6	92.3	46.7	43.7	0.0	0.0	155.3	151.5
Statewide Total		11.3	10.0	74.1	42.8	2.2	1.6	165.0	148.3	1400.3	1264.6	454.5	413.2	35.2	33.0	2142.6	1913.5