

# February 2018 FY 2017-2018 SB94 JDSAG SUPPLEMENTAL REPORT

---

Prepared by the Division of Youth Services (DYS)  
Data Management and Analysis  
March 23, 2018



**COLORADO**

**Office of Children,  
Youth & Families**

Division of Youth Services

## February 2018 SB94 Supplemental Report

### DYS Commitment ADP & New Commitments by Judicial District

Region	JD <sup>1</sup>	2018 Population Estimates <sup>2</sup>	ADP <sup>3</sup>		New Commitments		
			February 2018	YTD	February 2018	YTD	YTD Rate <sup>4</sup>
<i>Central Region</i>							
	1st	56,139	85.8	79.4	6	36	6.4
	2nd	65,275	99.2	97.1	5	40	6.1
	5th	10,694	5.5	7.5	0	0	0.0
	18th	122,766	75.1	74.6	5	37	3.0
<b>Central Total</b>		<b>254,874</b>	<b>265.5</b>	<b>258.6</b>	<b>16</b>	<b>113</b>	<b>4.4</b>
<i>Northeast Region</i>							
	8th	34,025	44.1	40.3	3	17	5.0
	13th	8,531	8.5	7.7	1	3	3.5
	17th	73,588	60.5	62.7	2	20	2.7
	19th	37,441	62.0	58.7	4	23	6.1
	20th	33,056	7.0	8.9	0	1	0.3
<b>Northeast Total</b>		<b>186,641</b>	<b>182.1</b>	<b>178.4</b>	<b>10</b>	<b>64</b>	<b>3.4</b>
<i>Southern Region</i>							
	3rd	1,785	0.0	0.5	0	0	0.0
	4th	83,158	98.1	96.2	3	45	5.4
	10th	18,165	29.6	32.8	0	7	3.9
	11th	7,111	7.3	6.2	1	3	4.2
	12th	5,276	5.6	6.2	0	1	1.9
	15th	2,117	7.1	6.0	1	6	28.3
	16th	2,827	0.0	0.0	0	0	0.0
<b>Southern Total</b>		<b>120,439</b>	<b>147.7</b>	<b>147.9</b>	<b>5</b>	<b>62</b>	<b>5.1</b>
<i>Western Region</i>							
	6th	6,710	7.5	8.6	0	4	6.0
	7th	10,675	6.4	8.4	0	3	2.8
	9th	9,607	7.0	6.0	0	2	2.1
	14th	5,587	3.0	2.3	0	1	1.8
	21st	16,016	32.8	34.0	3	18	11.2
	22nd	3,144	5.5	4.8	1	4	12.7
<b>Western Total</b>		<b>51,739</b>	<b>62.2</b>	<b>64.1</b>	<b>4</b>	<b>32</b>	<b>6.2</b>
<b>Statewide Total</b>		<b>613,693</b>	<b>657.6</b>	<b>649.0</b>	<b>35</b>	<b>271</b>	<b>4.4</b>

<sup>1</sup> JD represents the judicial district in which the client was committed. Regional totals are a sum of their respective judicial districts. Regional totals reported here may differ slightly from those reported in the Monthly Population Report, where region is defined by active caseloads.

<sup>2</sup> Source: DOLA 2018 Estimates.

<sup>3</sup> Due to rounding, totals shown may not be an exact sum of the subtotals.

<sup>4</sup> Per 10,000 youth in the population.

## February 2018 SB94 Supplemental Report

### DYS Detention ADP and New Detention Admissions by Judicial District

Region	JD	2018 Population Estimates <sup>1</sup>	ADP		New Admits		
			February 2018	YTD	February 2018	YTD	YTD New Admit Rate <sup>2</sup>
<i>Central Region</i>							
	1st	56,139	30.5	28.8	45	423	75.3
	2nd	65,275	31.5	40.1	52	566	86.7
	5th	10,694	3.1	1.4	6	26	24.3
	18th	122,766	40.2	40.1	77	696	56.7
<b>Central Total</b>		<b>254,874</b>	<b>105.3</b>	<b>110.4</b>	<b>180</b>	<b>1,711</b>	<b>67.1</b>
<i>Northeast Region</i>							
	8th	34,025	12.8	10.9	26	191	56.1
	13th	8,531	4.6	4.2	7	42	49.2
	17th	73,588	22.9	22.7	36	340	46.2
	19th	37,441	12.4	13.8	26	275	73.4
	20th	33,056	5.2	6.2	11	88	26.6
<b>Northeast Total</b>		<b>186,641</b>	<b>57.9</b>	<b>57.8</b>	<b>106</b>	<b>936</b>	<b>50.1</b>
<i>Southern Region</i>							
	3rd	1,785	1.8	0.6	1	18	100.8
	4th	83,158	44.6	45.0	58	473	56.9
	10th	18,165	8.7	11.6	20	166	91.4
	11th	7,111	5.0	2.9	11	64	90.0
	12th	5,276	0.1	2.0	2	24	45.5
	15th	2,117	0.8	1.4	1	14	66.1
	16th	2,827	2.3	1.6	0	24	84.9
<b>Southern Total</b>		<b>120,439</b>	<b>63.2</b>	<b>65.2</b>	<b>93</b>	<b>783</b>	<b>65.0</b>
<i>Western Region</i>							
	6th	6,710	1.3	3.0	5	36	53.7
	7th	10,675	5.0	3.6	8	41	38.4
	9th	9,607	2.3	2.9	4	36	37.5
	14th	5,587	2.2	0.9	3	15	26.8
	21st	16,016	12.8	13.8	18	165	103.0
	22nd	3,144	2.2	3.1	5	23	73.2
<b>Western Total</b>		<b>51,739</b>	<b>25.9</b>	<b>27.4</b>	<b>43</b>	<b>316</b>	<b>61.1</b>
<i>Missing JD or Multiple JDs</i>			<i>0.0</i>	<i>1.9</i>			
<b>Statewide Total</b>		<b>613,693</b>	<b>252.4</b>	<b>262.6</b>	<b>422</b>	<b>3,746</b>	<b>61.0</b>

<sup>1</sup> Source: DOLA 2018 Estimates.

<sup>2</sup> Per 10,000 youth in the population.

## February 2018 SB94 Supplemental Report

DYS Detention LOS by Judicial District				
Region	JD	YTD Detention Releases	YTD LOS (days)	LOS (days) Compared to State AVG
<i>Central Region</i>				
	1st	410	14.2	-2.5
	2nd	572	16.1	-0.6
	5th	22	6.7	-10.0
	18th	676	13.9	-2.8
<b>Central Total</b>		<b>1,680</b>	<b>14.6</b>	<b>-2.1</b>
<i>Northeast Region</i>				
	8th	192	14.6	-2.1
	13th	42	25.8	9.1
	17th	339	15.3	-1.5
	19th	280	11.5	-5.2
	20th	93	17.4	0.7
<b>Northeast Total</b>		<b>946</b>	<b>14.7</b>	<b>-2.0</b>
<i>Southern Region</i>				
	3rd	19	5.1	-11.6
	4th	470	22.1	5.4
	10th	163	16.2	-0.5
	11th	59	9.3	-7.4
	12th	26	19.4	2.7
	15th	14	28.5	11.8
	16th	22	13.4	-3.3
<b>Southern Total</b>		<b>773</b>	<b>19.3</b>	<b>2.6</b>
<i>Western Region</i>				
	6th	38	21.6	4.9
	7th	40	19.5	2.8
	9th	35	15.5	-1.2
	14th	13	11.0	-5.7
	21st	160	17.9	1.2
	22nd	21	31.0	14.3
<b>Western Total</b>		<b>307</b>	<b>18.9</b>	<b>2.2</b>
<b>Statewide Total</b>		<b>3,721</b>	<b>16.7</b>	<b>-</b>

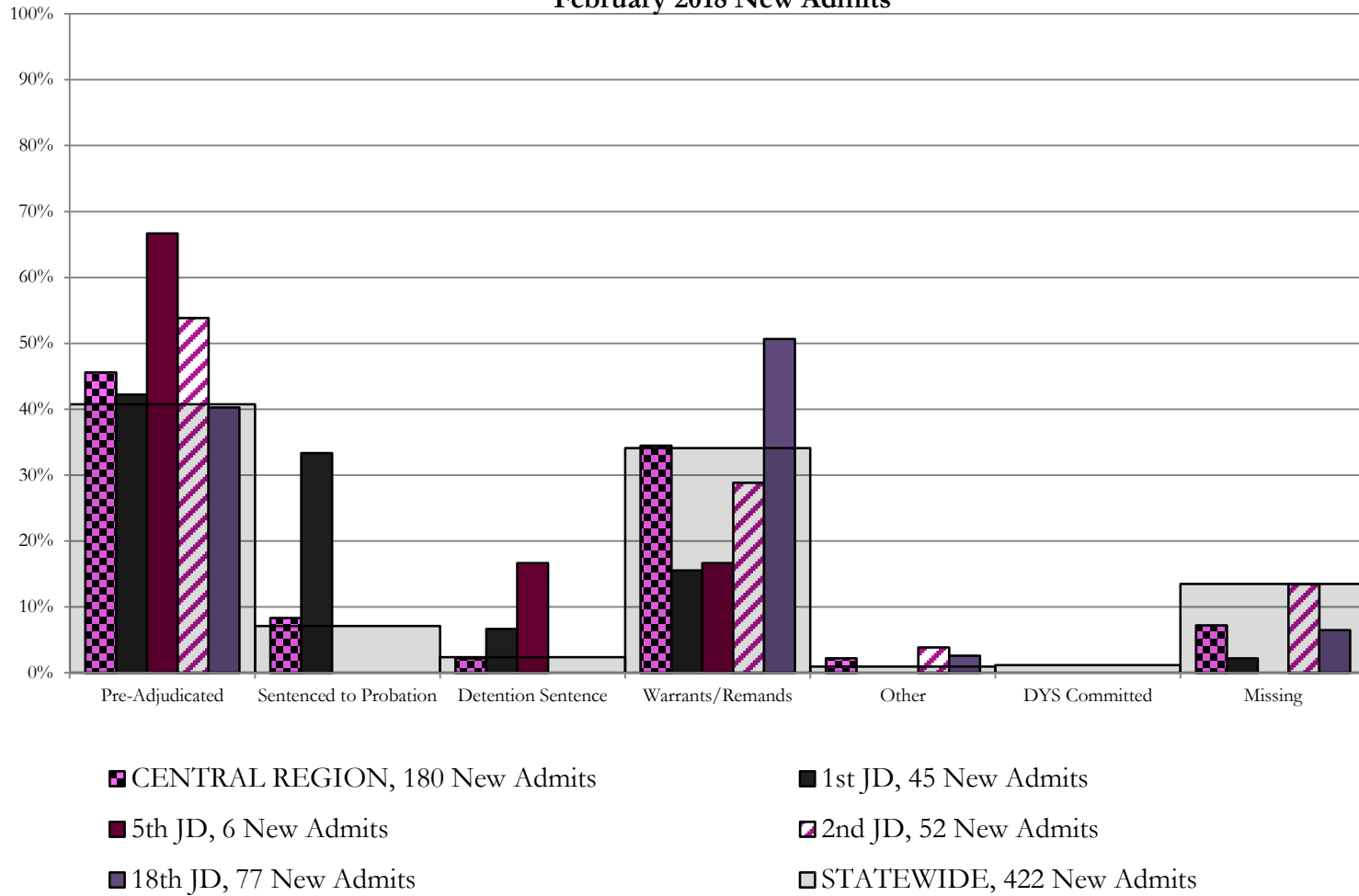
## February 2018 SB94 JDSAG Supplemental Report

### SB94 Reason Detained (RD) by Judicial District

Region	JD	Monthly New Admits	Pre-Adjudicated				Sentenced to Probation				Detention Sentence								Warrants/Remands				Other				DYS Committed		Missing									
			Felony		Misdemeanor		Technical Violator		New Charges		Probation Sentence		Detention Sentence		Valid Court Order (VCO) Truancy		Awaiting DSS (Social Services) Placement		Failure to Appear (FTA)		Failure to Comply (FTC)		Interstate Compact on Juveniles (ICJ) Hold		Immigration Hold		No Bond Hold		Out-of-Country Warrant		Institutional		Parole		Missing			
			#	%	#	%	#	%	#	%	#	%	#	%	#	%	#	%	#	%	#	%	#	%	#	%	#	%	#	%	#	%	#	%	#	%		
<b>Central Region</b>																																						
	1st	45	10	22.2%	9	20.0%	15	33.3%	0	0.0%	0	0.0%	3	6.7%	0	0.0%	0	0.0%	4	8.9%	3	6.7%	0	0.0%	0	0.0%	0	0.0%	0	0.0%	0	0.0%	0	0.0%	0	0.0%	1	2.2%
	2nd	52	22	42.3%	6	11.5%	0	0.0%	0	0.0%	0	0.0%	0	0.0%	0	0.0%	0	0.0%	4	7.7%	11	21.2%	2	3.8%	0	0.0%	0	0.0%	0	0.0%	0	0.0%	0	0.0%	0	0.0%	7	13.5%
	5th	6	4	66.7%	0	0.0%	0	0.0%	0	0.0%	0	0.0%	1	16.7%	0	0.0%	0	0.0%	0	0.0%	1	16.7%	0	0.0%	0	0.0%	0	0.0%	0	0.0%	0	0.0%	0	0.0%	0	0.0%	0	0.0%
	18th	77	15	19.5%	16	20.8%	0	0.0%	0	0.0%	0	0.0%	0	0.0%	0	0.0%	0	0.0%	6	7.8%	33	42.9%	2	2.6%	0	0.0%	0	0.0%	0	0.0%	0	0.0%	0	0.0%	0	0.0%	5	6.5%
<b>Central Total</b>		<b>180</b>	<b>51</b>	<b>28%</b>	<b>31</b>	<b>17%</b>	<b>15</b>	<b>8.3%</b>	<b>0</b>	<b>0.0%</b>	<b>0</b>	<b>0.0%</b>	<b>4</b>	<b>2.2%</b>	<b>0</b>	<b>0.0%</b>	<b>0</b>	<b>0.0%</b>	<b>14</b>	<b>8%</b>	<b>48</b>	<b>27%</b>	<b>4</b>	<b>2.2%</b>	<b>0</b>	<b>0.0%</b>	<b>0</b>	<b>0.0%</b>	<b>0</b>	<b>0.0%</b>	<b>0</b>	<b>0.0%</b>	<b>0</b>	<b>0.0%</b>	<b>13</b>	<b>7.2%</b>		
<b>Northeast Region</b>																																						
	8th	26	10	38.5%	3	11.5%	0	0.0%	0	0.0%	0	0.0%	0	0.0%	0	0.0%	0	0.0%	1	3.8%	7	26.9%	0	0.0%	0	0.0%	0	0.0%	0	0.0%	0	0.0%	0	0.0%	0	0.0%	5	19.2%
	13th	7	0	0.0%	1	14.3%	0	0.0%	0	0.0%	0	0.0%	0	0.0%	0	0.0%	0	0.0%	0	0.0%	3	42.9%	0	0.0%	0	0.0%	0	0.0%	0	0.0%	0	0.0%	0	0.0%	3	42.9%		
	17th	36	7	19.4%	1	2.8%	0	0.0%	0	0.0%	0	0.0%	0	0.0%	0	0.0%	0	0.0%	4	11.1%	17	47.2%	0	0.0%	0	0.0%	0	0.0%	0	0.0%	0	0.0%	0	0.0%	7	19.4%		
	19th	26	13	50.0%	3	11.5%	8	30.8%	0	0.0%	0	0.0%	0	0.0%	0	0.0%	0	0.0%	0	0.0%	1	3.8%	0	0.0%	0	0.0%	0	0.0%	0	0.0%	0	0.0%	0	0.0%	1	3.8%		
	20th	11	0	0.0%	0	0.0%	0	0.0%	0	0.0%	0	0.0%	1	9.1%	0	0.0%	1	9.1%	0	0.0%	0	0.0%	0	0.0%	0	0.0%	0	0.0%	0	0.0%	0	0.0%	0	0.0%	0	0.0%	8	72.7%
<b>Northeast Total</b>		<b>106</b>	<b>30</b>	<b>28%</b>	<b>8</b>	<b>8%</b>	<b>8</b>	<b>7.5%</b>	<b>0</b>	<b>0.0%</b>	<b>0</b>	<b>0.0%</b>	<b>1</b>	<b>0.9%</b>	<b>0</b>	<b>0.0%</b>	<b>1</b>	<b>0.9%</b>	<b>6</b>	<b>5.7%</b>	<b>28</b>	<b>26%</b>	<b>0</b>	<b>0.0%</b>	<b>0</b>	<b>0.0%</b>	<b>0</b>	<b>0.0%</b>	<b>0</b>	<b>0.0%</b>	<b>0</b>	<b>0.0%</b>	<b>0</b>	<b>0.0%</b>	<b>24</b>	<b>23%</b>		
<b>Southern Region</b>																																						
	3rd	1	0	0.0%	1	100.0%	0	0.0%	0	0.0%	0	0.0%	0	0.0%	0	0.0%	0	0.0%	0	0.0%	0	0.0%	0	0.0%	0	0.0%	0	0.0%	0	0.0%	0	0.0%	0	0.0%	0	0.0%	0	0.0%
	4th	58	22	37.9%	3	5.2%	2	3.4%	1	1.7%	0	0.0%	0	0.0%	0	0.0%	4	6.9%	17	29.3%	0	0.0%	0	0.0%	0	0.0%	0	0.0%	5	8.6%	0	0.0%	4	6.9%	0	0.0%		
	10th	20	1	5.0%	0	0.0%	0	0.0%	0	0.0%	0	0.0%	3	15.0%	0	0.0%	0	0.0%	4	20.0%	12	60.0%	0	0.0%	0	0.0%	0	0.0%	0	0.0%	0	0.0%	0	0.0%	0	0.0%	0	0.0%
	11th	11	4	36.4%	1	9.1%	1	9.1%	0	0.0%	0	0.0%	0	0.0%	0	0.0%	0	0.0%	2	18.2%	0	0.0%	0	0.0%	0	0.0%	0	0.0%	0	0.0%	0	0.0%	3	27.3%	0	0.0%		
	12th	2	0	0.0%	2	100.0%	0	0.0%	0	0.0%	0	0.0%	0	0.0%	0	0.0%	0	0.0%	0	0.0%	0	0.0%	0	0.0%	0	0.0%	0	0.0%	0	0.0%	0	0.0%	0	0.0%	0	0.0%		
	15th	1	0	0.0%	0	0.0%	1	100.0%	0	0.0%	0	0.0%	0	0.0%	0	0.0%	0	0.0%	0	0.0%	0	0.0%	0	0.0%	0	0.0%	0	0.0%	0	0.0%	0	0.0%	0	0.0%	0	0.0%		
	16th	0	0	0.0%	0	0.0%	0	0.0%	0	0.0%	0	0.0%	0	0.0%	0	0.0%	0	0.0%	0	0.0%	0	0.0%	0	0.0%	0	0.0%	0	0.0%	0	0.0%	0	0.0%	0	0.0%	0	0.0%		
<b>Southern Total</b>		<b>93</b>	<b>27</b>	<b>29%</b>	<b>7</b>	<b>8%</b>	<b>4</b>	<b>4.3%</b>	<b>1</b>	<b>1.1%</b>	<b>0</b>	<b>0.0%</b>	<b>3</b>	<b>3.2%</b>	<b>0</b>	<b>0.0%</b>	<b>0</b>	<b>0.0%</b>	<b>8</b>	<b>9%</b>	<b>31</b>	<b>33%</b>	<b>0</b>	<b>0.0%</b>	<b>0</b>	<b>0.0%</b>	<b>0</b>	<b>0.0%</b>	<b>0</b>	<b>0.0%</b>	<b>5</b>	<b>5.4%</b>	<b>0</b>	<b>0.0%</b>	<b>7</b>	<b>8%</b>		
<b>Western Region</b>																																						
	6th	5	1	20.0%	1	20.0%	0	0.0%	0	0.0%	0	0.0%	0	0.0%	0	0.0%	0	0.0%	0	0.0%	0	0.0%	0	0.0%	0	0.0%	0	0.0%	0	0.0%	0	0.0%	0	0.0%	3	60.0%		
	7th	8	5	62.5%	1	12.5%	1	12.5%	0	0.0%	0	0.0%	0	0.0%	0	0.0%	1	12.5%	0	0.0%	0	0.0%	0	0.0%	0	0.0%	0	0.0%	0	0.0%	0	0.0%	0	0.0%	0	0.0%		
	9th	4	1	25.0%	1	25.0%	0	0.0%	0	0.0%	0	0.0%	0	0.0%	0	0.0%	0	0.0%	0	0.0%	0	0.0%	0	0.0%	0	0.0%	0	0.0%	0	0.0%	0	0.0%	2	50.0%	0	0.0%		
	14th	3	0	0.0%	0	0.0%	0	0.0%	0	0.0%	0	0.0%	0	0.0%	0	0.0%	0	0.0%	0	0.0%	0	0.0%	0	0.0%	0	0.0%	0	0.0%	0	0.0%	0	0.0%	3	100.0%	0	0.0%		
	21st	18	8	44.4%	0	0.0%	0	0.0%	0	0.0%	0	0.0%	1	5.6%	0	0.0%	0	0.0%	1	5.6%	6	33.3%	0	0.0%	0	0.0%	0	0.0%	0	0.0%	0	0.0%	2	11.1%	0	0.0%		
	22nd	5	0	0.0%	0	0.0%	1	20.0%	0	0.0%	0	0.0%	0	0.0%	0	0.0%	0	0.0%	1	20.0%	0	0.0%	0	0.0%	0	0.0%	0	0.0%	0	0.0%	0	0.0%	3	60.0%	0	0.0%		
<b>Western Total</b>		<b>43</b>	<b>15</b>	<b>35%</b>	<b>3</b>	<b>7.0%</b>	<b>2</b>	<b>4.7%</b>	<b>0</b>	<b>0.0%</b>	<b>0</b>	<b>0.0%</b>	<b>1</b>	<b>2.3%</b>	<b>0</b>	<b>0.0%</b>	<b>0</b>	<b>0.0%</b>	<b>2</b>	<b>4.7%</b>	<b>7</b>	<b>16%</b>	<b>0</b>	<b>0.0%</b>	<b>0</b>	<b>0.0%</b>	<b>0</b>	<b>0.0%</b>	<b>0</b>	<b>0.0%</b>	<b>0</b>	<b>0.0%</b>	<b>13</b>	<b>30%</b>				
<b>Individual RD Totals</b>		<b>422</b>	<b>123</b>	<b>29%</b>	<b>49</b>	<b>12%</b>	<b>29</b>	<b>6.9%</b>	<b>1</b>	<b>0.2%</b>	<b>0</b>	<b>0.0%</b>	<b>9</b>	<b>2.1%</b>	<b>0</b>	<b>0.0%</b>	<b>1</b>	<b>0.2%</b>	<b>30</b>	<b>7%</b>	<b>114</b>	<b>27%</b>	<b>4</b>	<b>0.9%</b>	<b>0</b>	<b>0.0%</b>	<b>0</b>	<b>0.0%</b>	<b>0</b>	<b>0.0%</b>	<b>5</b>	<b>1.2%</b>	<b>0</b>	<b>0.0%</b>	<b>57</b>	<b>14%</b>		
<b>Statewide Totals</b>		<b>422</b>	<b>172</b>	<b>40.8%</b>	<b>30</b>	<b>7.1%</b>	<b>10</b>	<b>2.4%</b>	<b>0</b>	<b>0.0%</b>	<b>0</b>	<b>0.0%</b>	<b>10</b>	<b>2.4%</b>	<b>0</b>	<b>0.0%</b>	<b>1</b>	<b>0.2%</b>	<b>144</b>	<b>34.1%</b>	<b>4</b>	<b>0.9%</b>	<b>0</b>	<b>0.0%</b>	<b>0</b>	<b>0.0%</b>	<b>0</b>	<b>0.0%</b>	<b>5</b>	<b>1.2%</b>	<b>0</b>	<b>0.0%</b>	<b>57</b>	<b>14%</b>				

# Central Region

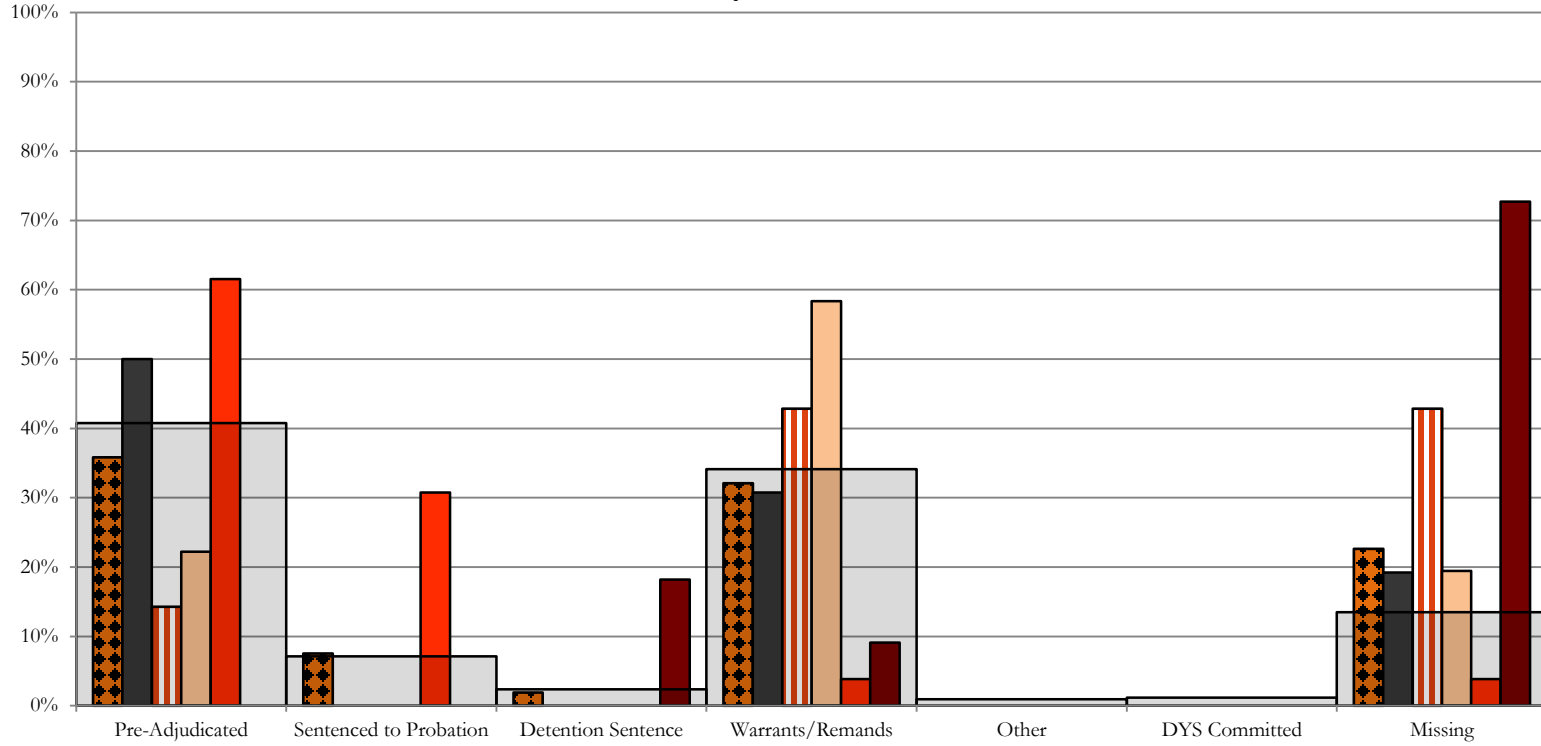
## SB94 Reason Detained by Judicial District February 2018 New Admits



# Northeast Region

## SB94 Reason Detained by Judicial District

### February 2018 New Admits



■ NORTHEAST REGION, 106 New Admits

■ 8th JD, 26 New Admits

■ 13th JD, 7 New Admits

■ 17th JD, 36 New Admits

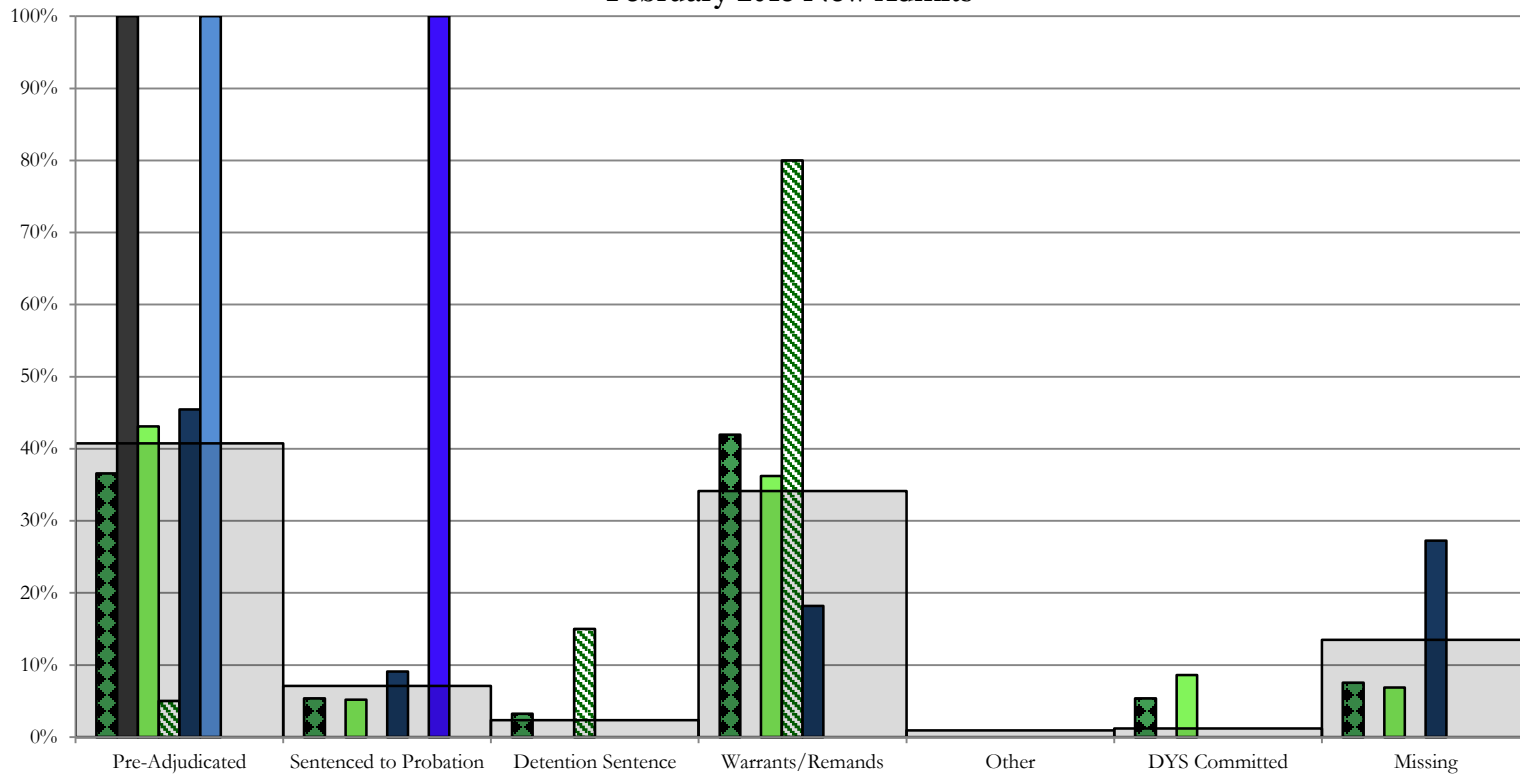
■ 19th JD, 26 New Admits

■ 20th JD, 11 New Admits

■ STATEWIDE, 422 New Admits

## Southern Region

### SB94 Reason Detained by Judicial District February 2018 New Admits



■ SOUTHERN REGION, 93 New Admits

■ 4th JD, 58 New Admits

■ 11th JD, 11 New Admits

■ 15th JD, 1 New Admits

■ STATEWIDE, 422 New Admits

■ 3rd JD, 1 New Admits

■ 10th JD, 20 New Admits

■ 12th JD, 2 New Admits

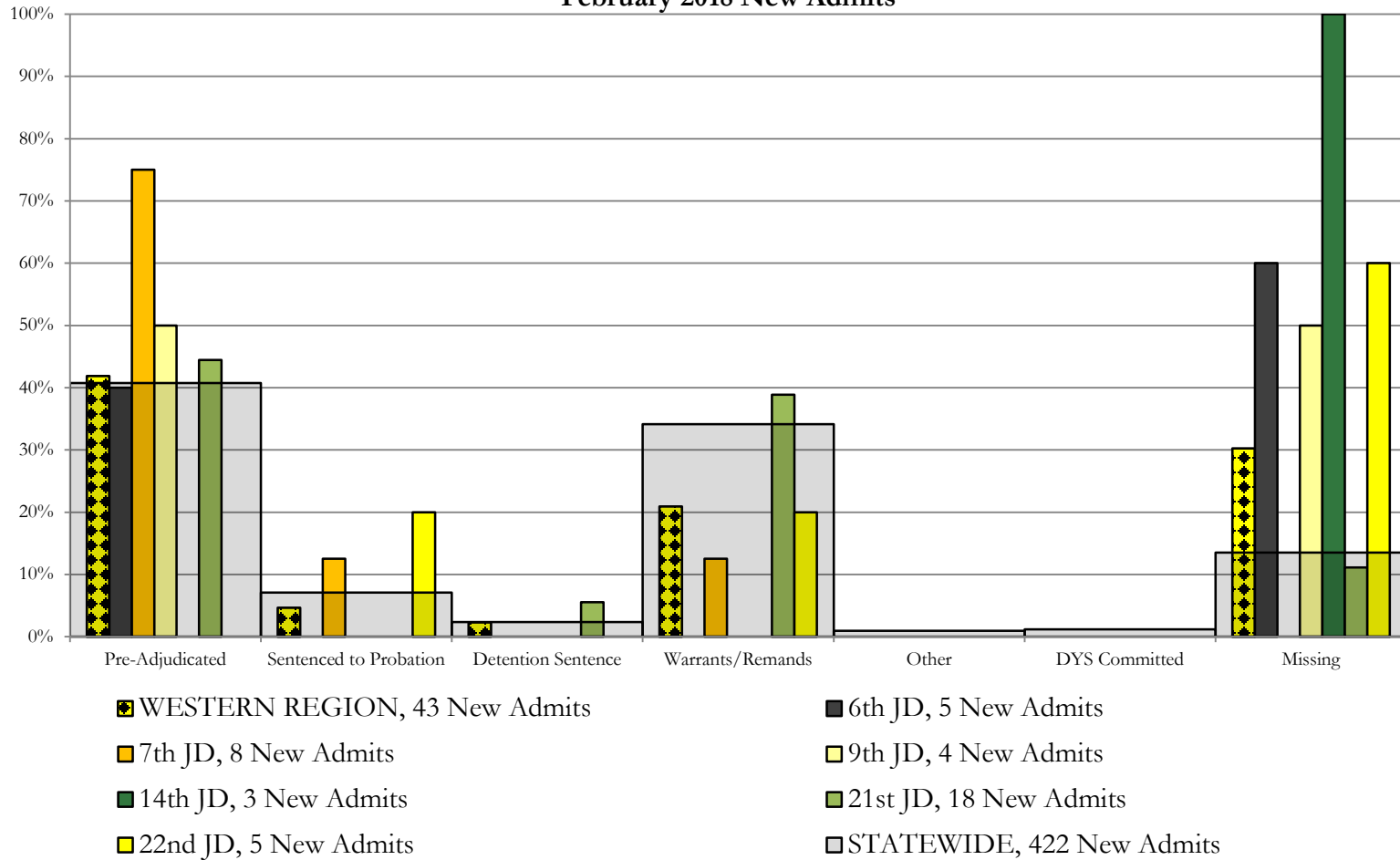
■ 16th JD, 0 New Admits



## Western Region

### SB94 Reason Detained by Judicial District

#### February 2018 New Admits



## February 2018 SB94 Supplemental Report

### DYS Detention Maximum Youth Served by Judicial District<sup>1</sup>

Region	JD	Detention Capacity	Detention ADP		Maximum Youth Served on a Single Day <sup>2,3</sup>			
			February 2018	YTD	February 2018		YTD	
					Number of Youth	% of Detention Capacity	Number of Youth	% of Detention Capacity
<i>Central Region</i>								
	1st	37	30.5	28.8	34	91.9%	40	108.1%
	2nd	64	31.5	40.1	38	59.4%	60	93.8%
	5th	4	3.1	1.4	6	150.0%	6	150.0%
	18th	61	40.2	40.1	51	83.6%	55	90.2%
<b>Central Region</b>		<b>166</b>	<b>105.3</b>	<b>110.4</b>	<b>122</b>	<b>73.5%</b>	<b>136</b>	<b>81.9%</b>
<i>Northeast Region</i>								
	8th	21	12.8	10.9	16	76.2%	18	85.7%
	13th	5	4.6	4.2	5	100.0%	7	140.0%
	17th	30	22.9	22.7	27	90.0%	30	100.0%
	19th	25	12.4	13.8	16	64.0%	27	108.0%
	20th	13	5.2	6.2	7	53.8%	11	84.6%
<b>Northeast Region</b>		<b>94</b>	<b>57.9</b>	<b>57.8</b>	<b>69</b>	<b>73.4%</b>	<b>76</b>	<b>80.9%</b>
<i>Southern Region</i>								
	3rd	2	1.8	0.6	3	150.0%	3	150.0%
	4th	51	44.6	45.0	51	100.0%	54	105.9%
	10th	13	8.7	11.6	13	100.0%	19	146.2%
	11th	8	5.0	2.9	10	125.0%	10	125.0%
	12th	4	0.1	2.0	1	25.0%	5	125.0%
	15th	2	0.8	1.4	1	50.0%	3	150.0%
	16th	3	2.3	1.6	3	100.0%	4	133.3%
<b>Southern Region</b>		<b>83</b>	<b>63.2</b>	<b>65.2</b>	<b>74</b>	<b>89.2%</b>	<b>78</b>	<b>94.0%</b>
<i>Western Region</i>								
	6th	5	1.3	3.0	5	100.0%	7	140.0%
	7th	7	5.0	3.6	8	114.3%	8	114.3%
	9th	6	2.3	2.9	4	66.7%	8	133.3%
	14th	3	2.2	0.9	4	133.3%	4	133.3%
	21st	14	12.8	13.8	16	114.3%	19	135.7%
	22nd	4	2.2	3.1	3	75.0%	6	150.0%
<b>Western Region</b>		<b>39</b>	<b>25.9</b>	<b>27.4</b>	<b>30</b>	<b>76.9%</b>	<b>37</b>	<b>94.9%</b>
<i>Missing JD or Multiple JDs</i>			0.0	1.9				
<b>Statewide</b>		<b>382</b>	<b>252.4</b>	<b>262.6</b>	<b>264</b>	<b>69.1%</b>	<b>301</b>	<b>78.8%</b>

<sup>1</sup> Maximum youth served is the highest number of youth in detention on a single day during the month or fiscal year.

<sup>2</sup> Regional figures are not the sum of judicial districts, but represent the maximum count on one day for the entire region.

<sup>3</sup> State figures are not the sum of regional figures, but represent the maximum count on one day for the entire state.

## February 2018 SB94 Supplemental Report

### SB94 Community ADP by Judicial District

Region	JD	Committed		Diversion		ICJ		Municipal		Pre-Adjudicated		Sentenced		VCO		Total	
		February	YTD	February	YTD	February	YTD	February	YTD	February	YTD	February	YTD	February	YTD	February	YTD
<i>Central Region</i>																	
	1st	0.0	0.0	2.7	0.6	0.0	0.0	14.1	7.6	290.1	247.5	29.5	25.4	0.0	0.0	336.4	281.1
	2nd	1.0	0.5	0.0	0.0	1.2	0.5	0.2	1.5	189.2	146.4	28.0	27.3	0.0	0.0	219.6	176.2
	5th	0.0	0.0	9.0	9.1	0.0	0.0	0.0	0.0	9.8	8.2	30.0	34.1	0.0	0.0	48.8	51.4
	18th	0.0	0.9	0.0	0.0	0.0	0.0	0.0	0.0	266.8	249.4	29.4	26.2	0.0	1.1	296.3	277.6
<b>Central Total</b>		<b>1.0</b>	<b>1.3</b>	<b>11.7</b>	<b>9.7</b>	<b>1.2</b>	<b>0.5</b>	<b>14.3</b>	<b>9.1</b>	<b>755.9</b>	<b>651.5</b>	<b>117.0</b>	<b>113.0</b>	<b>0.0</b>	<b>1.1</b>	<b>901.1</b>	<b>786.2</b>
<i>Northeast Region</i>																	
	8th	0.0	0.0	0.7	0.2	0.0	0.0	0.0	0.0	63.4	46.0	37.9	35.4	0.0	0.0	102.1	81.6
	13th	0.0	0.0	0.0	0.0	0.0	0.0	0.0	0.0	11.5	13.1	2.8	2.5	5.0	5.2	19.3	20.9
	17th	3.0	2.4	0.0	0.0	0.0	0.0	0.0	0.0	193.5	165.2	56.6	56.4	0.0	0.0	253.1	224.0
	19th	0.1	0.2	1.0	0.8	0.0	0.0	1.3	1.6	63.6	52.7	24.4	27.9	3.0	2.0	93.4	85.2
	20th	3.0	1.4	37.7	12.9	0.0	0.0	0.0	0.0	93.8	58.6	26.0	18.0	16.6	8.0	177.1	99.0
<b>Northeast Total</b>		<b>6.1</b>	<b>3.9</b>	<b>39.5</b>	<b>13.9</b>	<b>0.0</b>	<b>0.0</b>	<b>1.3</b>	<b>1.6</b>	<b>425.8</b>	<b>335.7</b>	<b>147.8</b>	<b>140.4</b>	<b>24.6</b>	<b>15.2</b>	<b>645.0</b>	<b>510.7</b>
<i>Southern Region</i>																	
	3rd	0.0	0.0	0.0	0.0	0.0	0.0	0.0	0.0	12.2	11.1	5.0	5.8	0.0	0.0	17.2	16.8
	4th	0.9	1.3	0.0	0.0	0.0	0.0	129.7	120.3	112.8	102.2	48.2	46.6	0.0	0.0	291.6	270.4
	10th	0.4	2.1	0.0	0.0	1.0	1.0	2.0	2.1	21.2	18.0	15.6	21.7	2.3	2.1	42.5	47.0
	11th	1.0	1.1	0.0	0.1	0.0	0.0	11.0	7.1	17.5	12.3	25.5	18.3	2.0	1.2	56.9	40.2
	12th	0.0	0.0	4.0	3.7	0.0	0.0	2.0	2.7	16.6	11.7	3.0	1.9	0.0	0.0	25.6	20.0
	15th	0.0	0.0	1.0	0.7	0.0	0.0	0.0	0.0	4.0	4.3	16.0	9.8	0.0	0.0	21.0	14.8
	16th	0.0	0.0	0.0	0.0	0.0	0.0	0.0	0.0	11.1	10.1	4.4	6.6	4.1	13.1	19.6	29.8
<b>Southern Total</b>		<b>2.3</b>	<b>4.5</b>	<b>5.0</b>	<b>4.5</b>	<b>1.0</b>	<b>1.0</b>	<b>144.7</b>	<b>132.2</b>	<b>195.3</b>	<b>169.7</b>	<b>117.8</b>	<b>110.6</b>	<b>8.3</b>	<b>16.4</b>	<b>474.4</b>	<b>439.0</b>
<i>Western Region</i>																	
	6th	0.0	0.0	0.0	0.0	0.0	0.0	0.0	0.0	5.7	9.6	0.0	0.8	0.0	0.0	5.7	10.4
	7th	0.0	0.0	8.0	6.0	0.0	0.0	0.0	0.0	21.3	19.1	28.0	21.2	0.0	0.0	57.3	46.3
	9th	0.0	0.0	0.0	0.1	0.0	0.0	2.0	4.1	14.9	12.9	1.7	1.7	0.0	0.0	18.5	18.8
	14th	0.0	0.1	3.5	5.6	0.0	0.0	0.0	0.0	4.0	3.6	0.8	0.2	0.0	0.0	8.3	9.5
	21st	0.0	0.0	0.0	0.0	0.0	0.0	0.0	0.0	39.5	40.4	17.4	15.7	0.0	0.0	56.9	56.1
	22nd	0.0	0.0	2.0	1.0	0.0	0.0	0.0	0.0	7.4	7.9	4.0	4.3	0.0	0.0	13.4	13.2
<b>Western Total</b>		<b>0.0</b>	<b>0.1</b>	<b>13.5</b>	<b>12.6</b>	<b>0.0</b>	<b>0.0</b>	<b>2.0</b>	<b>4.1</b>	<b>92.7</b>	<b>93.5</b>	<b>51.9</b>	<b>44.0</b>	<b>0.0</b>	<b>0.0</b>	<b>160.2</b>	<b>154.3</b>
<b>Statewide Total</b>		<b>9.4</b>	<b>9.8</b>	<b>69.7</b>	<b>40.8</b>	<b>2.2</b>	<b>1.5</b>	<b>162.4</b>	<b>147.0</b>	<b>1469.8</b>	<b>1250.3</b>	<b>434.4</b>	<b>408.1</b>	<b>32.9</b>	<b>32.7</b>	<b>2180.8</b>	<b>1890.2</b>