

January 2018 FY 2017-2018 SB94 JDSAG SUPPLEMENTAL REPORT

Prepared by the Division of Youth Services (DYS)
Data Management and Analysis
February 27, 2018



COLORADO

**Office of Children,
Youth & Families**

Division of Youth Services

January 2018 SB94 Supplemental Report

DYS Commitment ADP & New Commitments by Judicial District

Region	JD ¹	2018 Population Estimates ²	ADP ³		New Commitments		
			January 2018	YTD	January 2018	YTD	YTD Rate ⁴
<i>Central Region</i>							
	1st	56,139	82.7	78.5	7	30	5.3
	2nd	65,275	99.8	96.8	2	35	5.4
	5th	10,694	5.6	7.8	0	0	0.0
	18th	122,766	73.5	74.1	4	31	2.5
Central Total		254,874	261.5	257.1	13	96	3.8
<i>Northeast Region</i>							
	8th	34,025	41.9	39.8	2	14	4.1
	13th	8,531	7.8	7.6	0	2	2.3
	17th	73,588	58.0	63.6	3	16	2.2
	19th	37,441	59.6	58.1	2	19	5.1
	20th	33,056	7.0	9.2	0	1	0.3
Northeast Total		186,641	174.3	178.3	7	52	2.8
<i>Southern Region</i>							
	3rd	1,785	0.0	0.6	0	0	0.0
	4th	83,158	100.2	96.0	4	42	5.1
	10th	18,165	31.7	33.2	1	7	3.9
	11th	7,111	6.2	6.0	1	2	2.8
	12th	5,276	5.3	6.2	1	1	1.9
	15th	2,117	7.0	5.9	0	5	23.6
	16th	2,827	0.0	0.0	0	0	0.0
Southern Total		120,439	150.4	147.9	7	57	4.7
<i>Western Region</i>							
	6th	6,710	8.4	8.8	0	4	6.0
	7th	10,675	7.1	8.6	1	3	2.8
	9th	9,607	7.0	5.9	0	2	2.1
	14th	5,587	3.0	2.2	0	1	1.8
	21st	16,016	33.6	34.2	1	15	9.4
	22nd	3,144	5.0	4.7	0	3	9.5
Western Total		51,739	64.1	64.4	2	28	5.4
Statewide Total		613,693	650.3	647.8	29	233	3.8

¹ JD represents the judicial district in which the client was committed. Regional totals are a sum of their respective judicial districts. Regional totals reported here may differ slightly from those reported in the Monthly Population Report, where region is defined by active caseloads.

² Source: DOLA 2018 Estimates.

³ Due to rounding, totals shown may not be an exact sum of the subtotals.

⁴ Per 10,000 youth in the population.

January 2018 SB94 Supplemental Report

DYS Detention ADP and New Detention Admissions by Judicial District

Region	JD	2018 Population Estimates ¹	ADP		New Admits		YTD New Admit Rate ²
			January 2018	YTD	January 2018	YTD	
<i>Central Region</i>							
	1st	56,139	29.7	28.6	61	378	67.3
	2nd	65,275	43.4	41.3	77	514	78.7
	5th	10,694	1.8	1.1	3	20	18.7
	18th	122,766	41.7	40.0	94	619	50.4
Central Total		254,874	116.5	111.1	235	1,531	60.1
<i>Northeast Region</i>							
	8th	34,025	6.1	10.6	29	165	48.5
	13th	8,531	3.1	4.1	6	35	41.0
	17th	73,588	21.7	22.7	45	304	41.3
	19th	37,441	9.1	14.0	27	245	65.4
	20th	33,056	5.5	6.3	13	77	23.3
Northeast Total		186,641	45.5	57.8	120	826	44.3
<i>Southern Region</i>							
	3rd	1,785	0.8	0.5	3	18	100.8
	4th	83,158	45.7	45.1	61	415	49.9
	10th	18,165	11.5	11.9	15	146	80.4
	11th	7,111	5.3	2.7	10	53	74.5
	12th	5,276	1.2	2.3	1	22	41.7
	15th	2,117	1.2	1.5	3	13	61.4
	16th	2,827	1.7	1.4	3	23	81.4
Southern Total		120,439	67.4	65.4	96	690	57.3
<i>Western Region</i>							
	6th	6,710	1.5	3.3	3	31	46.2
	7th	10,675	3.7	3.4	8	33	30.9
	9th	9,607	3.7	3.0	2	32	33.3
	14th	5,587	0.9	0.8	2	12	21.5
	21st	16,016	15.4	13.9	21	147	91.8
	22nd	3,144	2.5	3.3	2	18	57.3
Western Total		51,739	27.6	27.6	38	273	52.8
<i>Missing JD or Multiple JDs</i>			<i>0.3</i>	<i>2.1</i>			
Statewide Total		613,693	257.3	264.0	489	3,320	54.1

¹ Source: DOLA 2018 Estimates.

² Per 10,000 youth in the population.

January 2018 SB94 Supplemental Report

DYS Detention LOS by Judicial District

Region	JD	YTD Detention Releases	YTD LOS (days)	LOS (days) Compared to State AVG
<i>Central Region</i>				
	1st	369	14.1	-2.7
	2nd	521	16.3	-0.6
	5th	18	7.3	-9.5
	18th	602	14.0	-2.9
Central Total		1,510	14.7	-2.1
<i>Northeast Region</i>				
	8th	168	15.2	-1.6
	13th	36	26.8	10.0
	17th	305	14.7	-2.1
	19th	254	11.8	-5.1
	20th	83	18.7	1.9
Northeast Total		846	14.9	-2.0
<i>Southern Region</i>				
	3rd	17	4.7	-12.2
	4th	416	22.9	6.0
	10th	146	15.9	-0.9
	11th	49	9.0	-7.9
	12th	24	21.0	4.1
	15th	13	25.3	8.5
	16th	21	13.1	-3.7
Southern Total		686	19.6	2.8
<i>Western Region</i>				
	6th	36	22.6	5.7
	7th	30	18.6	1.8
	9th	32	16.0	-0.8
	14th	9	11.8	-5.0
	21st	142	17.0	0.1
	22nd	17	31.5	14.7
Western Total		266	18.6	1.7
Statewide Total		26	16.9	-

**January 2018
SB94 JDSAG Supplemental Report**

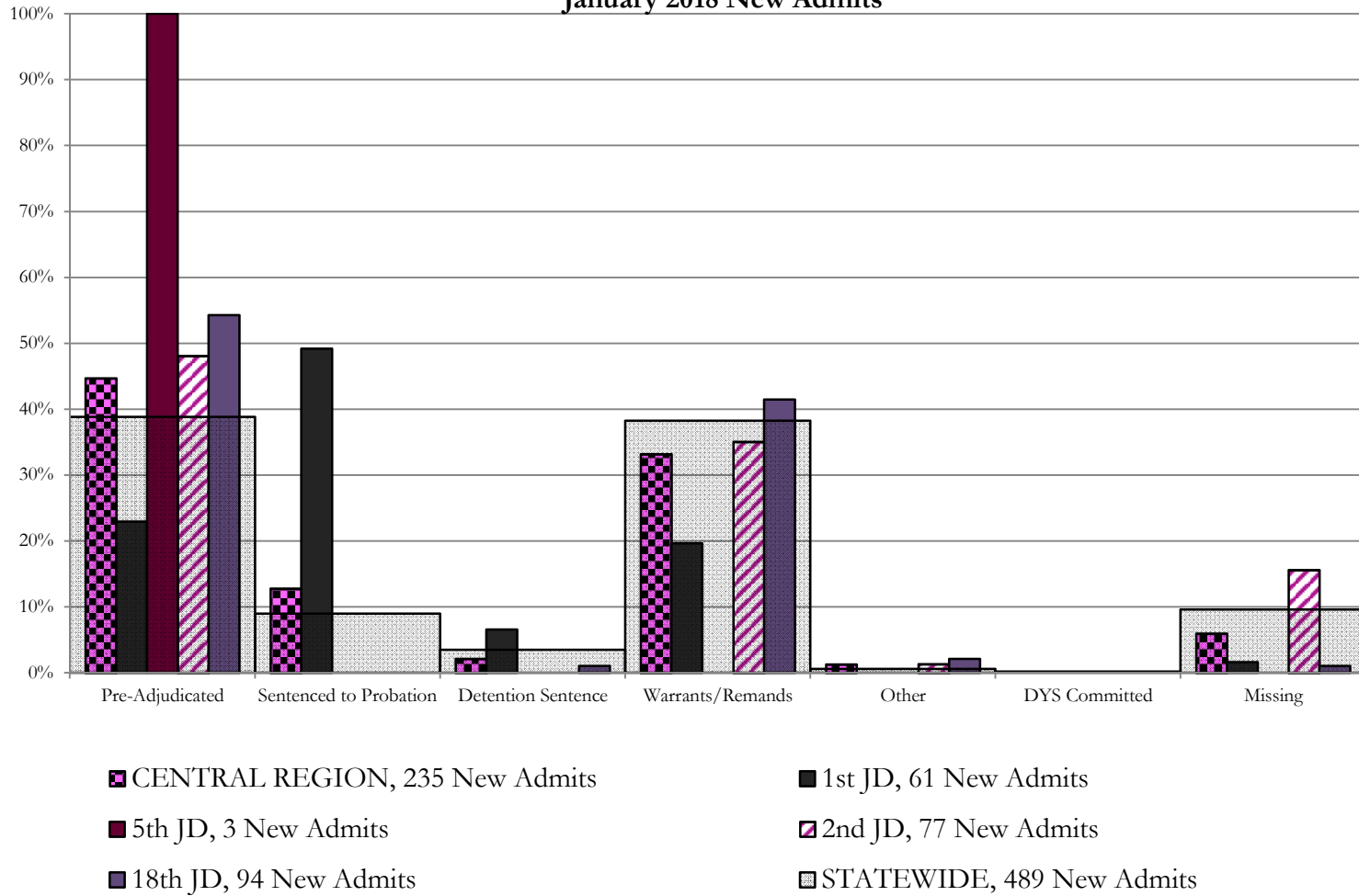
SB94 Reason Detained (RD) by Judicial District

Region	JD	Monthly New Admits	Pre-Adjudicated				Sentenced to Probation				Detention Sentence								Warrants/Remands				Other						DYS Committed		Missing							
			Felony		Misdemeanor		Technical Violator		New Charges		Probation Sentence		Detention Sentence		Valid Court Order (VCO) Truancy		Awaiting DSS (Social Services) Placement		Failure to Appear (FTA)		Failure to Comply (FTC)		Interstate Compact on Juveniles (ICJ) Hold		Immigration Hold		No Bond Hold		Out-of-Country Warrant		Institutional		Parole		Missing			
			#	%	#	%	#	%	#	%	#	%	#	%	#	%	#	%	#	%	#	%	#	%	#	%	#	%	#	%	#	%	#	%				
Central Region																																						
	1st	61	11	18.0%	3	4.9%	30	49.2%	0	0.0%	0	0.0%	4	6.6%	0	0.0%	0	0.0%	0	0.0%	0	0.0%	0	0.0%	0	0.0%	0	0.0%	0	0.0%	0	0.0%	0	0.0%	0	0.0%	1	1.6%
	2nd	77	34	44.2%	3	3.9%	0	0.0%	0	0.0%	0	0.0%	0	0.0%	0	0.0%	0	0.0%	9	11.7%	18	23.4%	1	1.3%	0	0.0%	0	0.0%	0	0.0%	0	0.0%	0	0.0%	0	0.0%	12	15.6%
	5th	3	2	66.7%	1	33.3%	0	0.0%	0	0.0%	0	0.0%	0	0.0%	0	0.0%	0	0.0%	0	0.0%	0	0.0%	0	0.0%	0	0.0%	0	0.0%	0	0.0%	0	0.0%	0	0.0%	0	0.0%	0	0.0%
	18th	94	25	26.6%	26	27.7%	0	0.0%	0	0.0%	0	0.0%	0	0.0%	1	1.1%	7	7.4%	32	34.0%	2	2.1%	0	0.0%	0	0.0%	0	0.0%	0	0.0%	0	0.0%	0	0.0%	0	0.0%	1	1.1%
Central Total		235	72	31%	33	14%	30	12.8%	0	0.0%	0	0.0%	4	1.7%	0	0.0%	1	0.4%	21	9%	57	24%	3	1.3%	0	0.0%	0	0.0%	0	0.0%	0	0.0%	0	0.0%	0	0.0%	14	6.0%
Northeast Region																																						
	8th	29	7	24.1%	6	20.7%	0	0.0%	0	0.0%	0	0.0%	0	0.0%	0	0.0%	0	0.0%	4	13.8%	11	37.9%	0	0.0%	0	0.0%	0	0.0%	0	0.0%	0	0.0%	0	0.0%	0	0.0%	1	3.4%
	13th	6	1	16.7%	0	0.0%	0	0.0%	0	0.0%	0	0.0%	0	0.0%	0	0.0%	0	0.0%	0	0.0%	5	83.3%	0	0.0%	0	0.0%	0	0.0%	0	0.0%	0	0.0%	0	0.0%	0	0.0%	0	0.0%
	17th	45	6	13.3%	6	13.3%	0	0.0%	0	0.0%	0	0.0%	0	0.0%	0	0.0%	0	0.0%	2	4.4%	19	42.2%	0	0.0%	0	0.0%	0	0.0%	0	0.0%	0	0.0%	0	0.0%	0	0.0%	12	26.7%
	19th	27	6	22.2%	4	14.8%	11	40.7%	0	0.0%	0	0.0%	0	0.0%	0	0.0%	0	0.0%	1	3.7%	5	18.5%	0	0.0%	0	0.0%	0	0.0%	0	0.0%	0	0.0%	0	0.0%	0	0.0%	0	0.0%
	20th	13	1	7.7%	1	7.7%	0	0.0%	0	0.0%	0	0.0%	3	23.1%	0	0.0%	2	15.4%	0	0.0%	0	0.0%	0	0.0%	0	0.0%	0	0.0%	0	0.0%	0	0.0%	0	0.0%	0	0.0%	6	46.2%
Northeast Total		120	21	18%	17	14%	11	9.2%	0	0.0%	0	0.0%	3	2.5%	0	0.0%	2	1.7%	7	5.8%	40	33%	0	0.0%	0	0.0%	0	0.0%	0	0.0%	0	0.0%	0	0.0%	0	0.0%	19	16%
Southern Region																																						
	3rd	3	1	33.3%	1	33.3%	0	0.0%	0	0.0%	0	0.0%	0	0.0%	0	0.0%	0	0.0%	0	0.0%	0	0.0%	0	0.0%	0	0.0%	0	0.0%	0	0.0%	0	0.0%	0	0.0%	1	33.3%		
	4th	61	19	31.1%	5	8.2%	0	0.0%	1	1.6%	0	0.0%	0	0.0%	0	0.0%	1	1.6%	8	13.1%	25	41.0%	0	0.0%	0	0.0%	0	0.0%	0	0.0%	1	1.6%	0	0.0%	1	1.6%		
	10th	15	6	40.0%	1	6.7%	0	0.0%	0	0.0%	0	0.0%	0	0.0%	2	13.3%	0	0.0%	2	13.3%	4	26.7%	0	0.0%	0	0.0%	0	0.0%	0	0.0%	0	0.0%	0	0.0%	0	0.0%	0	0.0%
	11th	10	3	30.0%	0	0.0%	0	0.0%	0	0.0%	2	20.0%	0	0.0%	0	0.0%	0	0.0%	1	10.0%	2	20.0%	0	0.0%	0	0.0%	0	0.0%	0	0.0%	0	0.0%	0	0.0%	2	20.0%		
	12th	1	0	0.0%	0	0.0%	0	0.0%	0	0.0%	0	0.0%	0	0.0%	0	0.0%	0	0.0%	1	100.0%	0	0.0%	0	0.0%	0	0.0%	0	0.0%	0	0.0%	0	0.0%	0	0.0%	0	0.0%		
	15th	3	0	0.0%	0	0.0%	1	33.3%	0	0.0%	0	0.0%	1	33.3%	0	0.0%	0	0.0%	1	33.3%	0	0.0%	0	0.0%	0	0.0%	0	0.0%	0	0.0%	0	0.0%	0	0.0%	0	0.0%		
	16th	3	1	33.3%	0	0.0%	0	0.0%	0	0.0%	0	0.0%	0	0.0%	0	0.0%	1	33.3%	0	0.0%	0	0.0%	0	0.0%	0	0.0%	0	0.0%	0	0.0%	0	0.0%	0	0.0%	1	33.3%		
Southern Total		96	30	31%	7	7%	1	1.0%	1	1.0%	0	0.0%	3	3.1%	2	2.1%	1	1.0%	14	15%	31	32%	0	0.0%	0	0.0%	0	0.0%	0	0.0%	0	0.0%	1	1.0%	0	0.0%	5	5%
Western Region																																						
	6th	3	0	0.0%	0	0.0%	0	0.0%	0	0.0%	0	0.0%	0	0.0%	0	0.0%	0	0.0%	1	33.3%	1	33.3%	0	0.0%	0	0.0%	0	0.0%	0	0.0%	0	0.0%	0	0.0%	1	33.3%		
	7th	8	3	37.5%	0	0.0%	1	12.5%	0	0.0%	0	0.0%	0	0.0%	0	0.0%	0	0.0%	1	12.5%	1	12.5%	0	0.0%	0	0.0%	0	0.0%	0	0.0%	0	0.0%	0	0.0%	2	25.0%		
	9th	2	0	0.0%	0	0.0%	0	0.0%	0	0.0%	0	0.0%	0	0.0%	0	0.0%	0	0.0%	0	0.0%	1	50.0%	0	0.0%	0	0.0%	0	0.0%	0	0.0%	0	0.0%	1	50.0%				
	14th	2	0	0.0%	0	0.0%	0	0.0%	0	0.0%	0	0.0%	0	0.0%	0	0.0%	0	0.0%	0	0.0%	0	0.0%	0	0.0%	0	0.0%	0	0.0%	0	0.0%	0	0.0%	2	100.0%				
	21st	21	3	14.3%	3	14.3%	0	0.0%	0	0.0%	0	0.0%	1	4.8%	0	0.0%	0	0.0%	3	14.3%	9	42.9%	0	0.0%	0	0.0%	0	0.0%	0	0.0%	0	0.0%	0	0.0%	2	9.5%		
	22nd	2	0	0.0%	1	50.0%	0	0.0%	0	0.0%	0	0.0%	0	0.0%	0	0.0%	0	0.0%	0	0.0%	0	0.0%	0	0.0%	0	0.0%	0	0.0%	0	0.0%	0	0.0%	0	0.0%	1	50.0%		
Western Total		38	6	16%	4	10.5%	1	2.6%	0	0.0%	0	0.0%	1	2.6%	0	0.0%	0	0.0%	5	13.2%	12	32%	0	0.0%	0	0.0%	0	0.0%	0	0.0%	0	0.0%	0	0.0%	9	24%		
Individual RD Totals		489	129	26%	61	12%	43	8.8%	1	0.2%	0	0.0%	11	2.2%	2	0.4%	4	0.8%	47	10%	140	29%	3	0.6%	0	0.0%	0	0.0%	0	0.0%	0	0.0%	1	0.2%	0	0.0%	47	10%
Statewide Totals		489	190	38.9%	44	9.0%	17	3.5%	187	38.2%	3	0.6%	1	0.2%	0	0.0%	0	0.0%	0	0.0%	0	0.0%	0	0.0%	0	0.0%	0	0.0%	0	0.0%	1	0.2%	0	0.0%	47	10%		

Central Region

SB94 Reason Detained by Judicial District

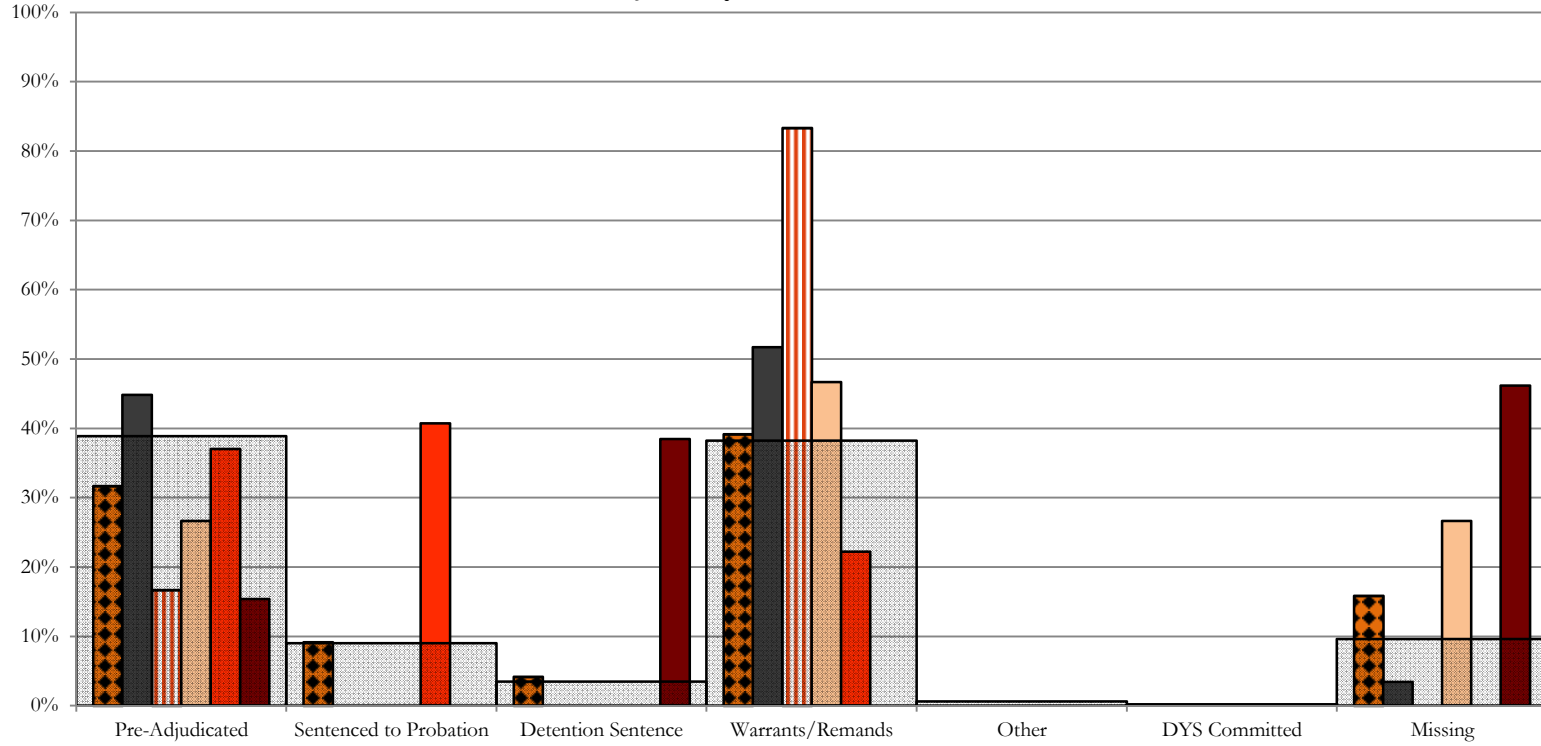
January 2018 New Admits



Northeast Region

SB94 Reason Detained by Judicial District

January 2018 New Admits



■ NORTHEAST REGION, 120 New Admits

■ 8th JD, 29 New Admits

■ 13th JD, 6 New Admits

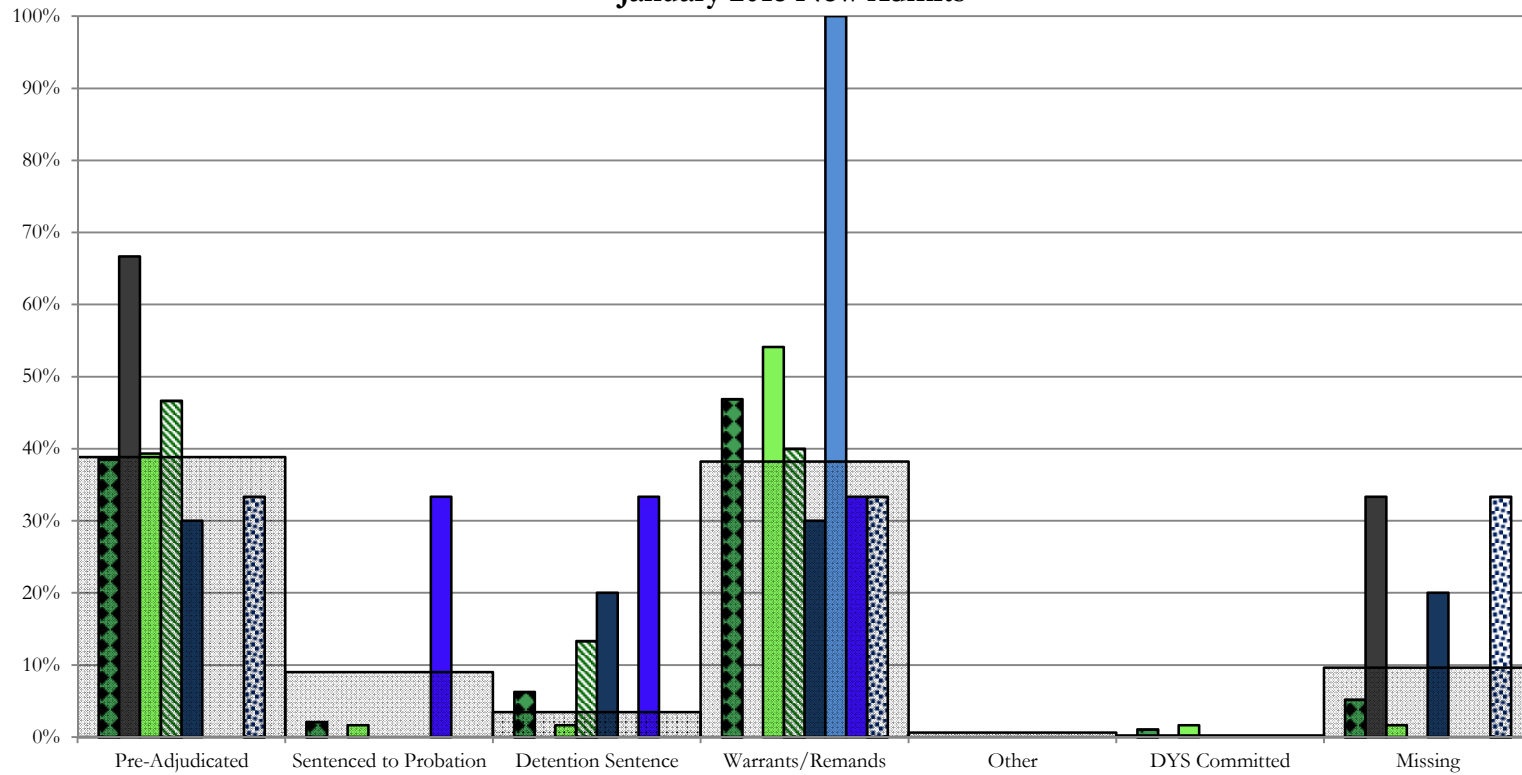
■ 17th JD, 45 New Admits

■ 19th JD, 27 New Admits

■ 20th JD, 13 New Admits

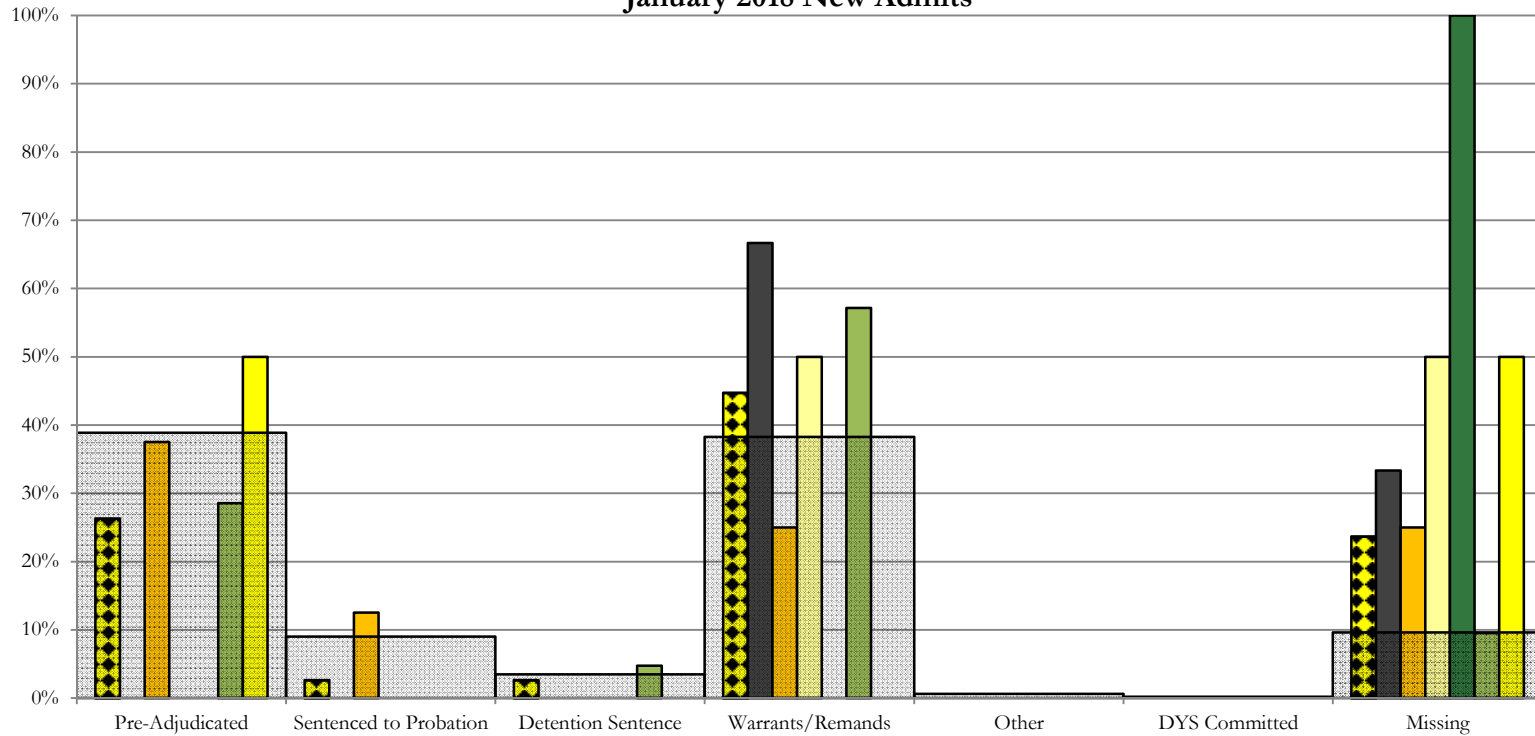
■ STATEWIDE, 489 New Admits

Southern Region SB94 Reason Detained by Judicial District January 2018 New Admits



- SOUTHERN REGION, 96 New Admits
- 4th JD, 61 New Admits
- 11th JD, 10 New Admits
- 15th JD, 3 New Admits
- STATEWIDE, 489 New Admits
- 3rd JD, 3 New Admits
- 10th JD, 15 New Admits
- 12th JD, 1 New Admits
- 16th JD, 3 New Admits

Western Region SB94 Reason Detained by Judicial District January 2018 New Admits



■ WESTERN REGION, 38 New Admits

■ 7th JD, 8 New Admits

■ 14th JD, 2 New Admits

■ 22nd JD, 2 New Admits

■ 6th JD, 3 New Admits

■ 9th JD, 2 New Admits

■ 21st JD, 21 New Admits

■ STATEWIDE, 489 New Admits

January 2018 SB94 Supplemental Report

DYS Detention Maximum Youth Served by Judicial District¹

Region	JD	Detention Capacity	Detention ADP		Maximum Youth Served on a Single Day ^{2,3}			
			January 2018	YTD	January 2018		YTD	
					Number of Youth	% of Detention Capacity	Number of Youth	% of Detention Capacity
<i>Central Region</i>								
	1st	37	29.7	28.6	36	97.3%	40	108.1%
	2nd	64	43.4	41.3	59	92.2%	60	93.8%
	5th	4	1.8	1.1	3	75.0%	4	100.0%
	18th	61	41.7	40.0	49	80.3%	55	90.2%
Central Region		166	116.5	111.1	137	82.5%	137	82.5%
<i>Northeast Region</i>								
	8th	21	6.1	10.6	11	52.4%	18	85.7%
	13th	5	3.1	4.1	5	100.0%	7	140.0%
	17th	30	21.7	22.7	27	90.0%	30	100.0%
	19th	25	9.1	14.0	12	48.0%	27	108.0%
	20th	13	5.5	6.3	8	61.5%	11	84.6%
Northeast Region		94	45.5	57.8	53	56.4%	76	80.9%
<i>Southern Region</i>								
	3rd	2	0.8	0.5	2	100.0%	2	100.0%
	4th	51	45.7	45.1	50	98.0%	54	105.9%
	10th	13	11.5	11.9	15	115.4%	19	146.2%
	11th	8	5.3	2.7	7	87.5%	7	87.5%
	12th	4	1.2	2.3	2	50.0%	5	125.0%
	15th	2	1.2	1.5	2	100.0%	3	150.0%
	16th	3	1.7	1.4	3	100.0%	4	133.3%
Southern Region		83	67.4	65.4	76	91.6%	78	94.0%
<i>Western Region</i>								
	6th	5	1.5	3.3	3	60.0%	7	140.0%
	7th	7	3.7	3.4	6	85.7%	7	100.0%
	9th	6	3.7	3.0	5	83.3%	8	133.3%
	14th	3	0.9	0.8	2	66.7%	3	100.0%
	21st	14	15.4	13.9	18	128.6%	19	135.7%
	22nd	4	2.5	3.3	3	75.0%	6	150.0%
Western Region		39	27.6	27.6	32	82.1%	37	94.9%
<i>Missing JD or Multiple JDs</i>			0.3	2.1				
Statewide		382	257.3	264.0	280	73.3%	301	78.8%

¹ Maximum youth served is the highest number of youth in detention on a single day during the month or fiscal year.

² Regional figures are not the sum of judicial districts, but represent the maximum count on one day for the entire region.

³ State figures are not the sum of regional figures, but represent the maximum count on one day for the entire state.

January 2018 SB94 Supplemental Report

SB94 Community ADP by Judicial District

Region	JD	Committed		Diversion		ICJ		Municipal		Pre-Adjudicated		Sentenced		VCO		Total	
		January	YTD	January	YTD	January	YTD	January	YTD	January	YTD	January	YTD	January	YTD	January	YTD
<i>Central Region</i>																	
	1st	0.0	0.0	1.9	0.3	0.0	0.0	6.0	6.6	259.8	241.4	24.3	24.8	0.0	0.0	292.0	273.2
	2nd	1.0	0.4	0.0	0.0	1.3	0.4	0.6	1.7	178.7	141.2	33.3	28.0	0.0	0.0	214.9	171.6
	5th	0.0	0.0	11.0	11.3	0.0	0.0	0.0	0.0	7.5	7.9	31.8	34.6	0.0	0.0	50.2	53.8
	18th	0.6	1.0	0.0	0.0	0.0	0.0	0.0	0.0	281.7	248.5	27.7	25.5	0.0	1.2	310.0	276.2
Central Total		1.6	1.4	12.8	11.6	1.3	0.4	6.6	8.3	727.7	639.0	117.1	113.0	0.0	1.2	867.2	774.8
<i>Northeast Region</i>																	
	8th	0.0	0.0	0.0	0.1	0.0	0.0	0.0	0.0	46.0	44.8	32.5	34.7	0.0	0.0	78.5	79.7
	13th	0.0	0.0	0.0	0.0	0.0	0.0	0.0	0.0	11.4	13.3	2.2	2.5	5.0	5.2	18.6	21.1
	17th	3.0	2.3	0.0	0.0	0.0	0.0	0.0	0.0	189.9	162.7	54.0	56.4	0.0	0.0	246.9	221.4
	19th	0.1	0.2	1.0	0.8	0.0	0.0	3.0	1.8	56.6	49.5	27.2	27.5	4.0	2.2	91.9	82.1
	20th	2.9	1.2	6.0	4.9	0.0	0.0	0.0	0.0	99.3	63.8	26.5	24.8	19.0	8.8	153.6	103.5
Northeast Total		6.0	3.6	7.0	5.8	0.0	0.0	3.0	1.8	403.2	334.1	142.4	146.0	28.0	16.3	589.6	507.7
<i>Southern Region</i>																	
	3rd	0.0	0.0	0.0	0.0	0.0	0.0	0.0	0.0	11.4	10.9	4.8	5.9	0.0	0.0	16.1	16.8
	4th	0.1	1.3	0.0	0.0	0.0	0.0	124.4	118.3	117.9	102.1	48.1	45.7	0.0	0.0	290.5	267.5
	10th	2.0	2.3	0.0	0.0	1.0	1.0	2.0	2.2	20.0	16.4	21.4	24.0	2.0	2.0	48.4	47.9
	11th	1.0	1.2	0.0	0.1	3.6	0.0	7.8	7.4	14.8	11.8	24.0	18.1	1.7	1.1	53.0	39.6
	12th	0.0	0.0	4.8	3.6	0.0	0.0	2.9	2.7	14.0	11.1	3.5	1.7	0.0	0.0	25.3	19.2
	15th	0.0	0.0	1.0	6.6	0.0	0.0	0.0	0.0	3.7	4.3	14.7	8.9	0.0	0.0	19.4	19.9
	16th	0.0	0.0	0.0	0.0	0.0	0.0	0.0	0.0	13.1	10.0	5.5	7.9	6.6	14.3	25.2	32.2
Southern Total		3.1	4.8	5.8	10.4	4.6	1.0	137.0	130.6	195.0	166.6	121.9	112.3	10.3	17.5	477.8	443.1
<i>Western Region</i>																	
	6th	0.0	0.0	0.0	0.0	0.0	0.0	0.0	0.0	6.6	9.8	0.1	0.9	0.0	0.0	6.6	10.7
	7th	0.0	0.0	6.1	5.5	0.0	0.0	0.0	0.0	22.1	18.8	23.9	21.2	0.0	0.0	52.1	45.6
	9th	0.0	0.0	0.0	0.1	0.0	0.0	2.0	4.4	16.1	13.6	1.3	1.8	0.0	0.0	19.4	19.8
	14th	0.2	0.1	5.0	6.6	0.0	0.0	0.0	0.0	4.0	3.1	0.0	0.1	0.0	0.0	9.2	9.9
	21st	0.0	0.0	0.0	0.0	0.0	0.0	0.0	0.0	44.0	41.4	15.7	15.5	0.0	0.0	59.7	56.9
	22nd	0.0	0.0	0.0	0.0	0.0	0.0	0.0	0.0	6.0	7.3	4.8	5.0	0.0	0.0	10.8	12.3
Western Total		0.2	0.1	11.1	12.2	0.0	0.0	2.0	4.4	98.9	94.1	45.8	44.5	0.0	0.0	158.0	155.2
Statewide Total		10.9	9.9	36.7	40.0	5.9	1.4	148.7	145.1	1424.7	1233.7	427.2	415.8	38.3	35.0	2092.5	1880.9