

# December 2017 FY 2017-2018 SB94 JDSAG SUPPLEMENTAL REPORT

---

Prepared by the Division of Youth Services (DYS)  
Data Management & Analysis  
January 25, 2018



**CO L O R A D O**

**Office of Children,  
Youth & Families**

Division of Youth Services

# December 2017 SB94 Supplemental Report

## DYS Commitment ADP & New Commitments by Judicial District

Region	JD <sup>1</sup>	2017 Population Estimates <sup>2</sup>	ADP <sup>3</sup>		New Commitments		
			December 2017	YTD	December 2017	YTD	YTD Rate <sup>4</sup>
<i>Central Region</i>							
	1st	56,020	82.9	77.8	2	23	4.1
	2nd	62,634	100.3	96.2	7	32	5.1
	5th	10,162	6.9	8.1	0	0	0.0
	18th	121,363	72.1	74.2	4	27	2.2
<b>Central Total</b>		<b>250,179</b>	<b>262.2</b>	<b>256.4</b>	<b>13</b>	<b>82</b>	<b>3.3</b>
<i>Northeast Region</i>							
	8th	32,983	38.8	39.4	1	12	3.6
	13th	8,520	7.0	7.6	0	2	2.3
	17th	71,425	61.1	64.6	1	12	1.7
	19th	36,924	59.8	58.0	4	17	4.6
	20th	32,693	7.4	9.6	0	1	0.3
<b>Northeast Total</b>		<b>182,545</b>	<b>174.2</b>	<b>179.1</b>	<b>6</b>	<b>44</b>	<b>2.4</b>
<i>Southern Region</i>							
	3rd	1,871	0.0	0.7	0	0	0.0
	4th	81,725	102.4	95.3	0	38	4.6
	10th	17,869	29.4	33.4	3	6	3.4
	11th	7,196	6.0	6.0	0	1	1.4
	12th	5,241	5.5	6.4	0	0	0.0
	15th	2,102	7.0	5.7	0	5	23.8
	16th	2,749	0.0	0.0	0	0	0.0
<b>Southern Total</b>		<b>118,753</b>	<b>150.3</b>	<b>147.4</b>	<b>3</b>	<b>50</b>	<b>4.2</b>
<i>Western Region</i>							
	6th	6,491	8.3	8.9	0	4	6.2
	7th	10,788	6.9	8.9	0	2	1.9
	9th	9,477	6.2	5.7	2	2	2.1
	14th	5,635	2.4	2.1	0	1	1.8
	21st	15,968	33.1	34.2	2	14	8.8
	22nd	3,108	5.1	4.7	2	3	9.7
<b>Western Total</b>		<b>51,467</b>	<b>62.0</b>	<b>64.4</b>	<b>6</b>	<b>26</b>	<b>5.1</b>
<b>Statewide Total</b>		<b>602,944</b>	<b>648.8</b>	<b>647.3</b>	<b>28</b>	<b>202</b>	<b>3.4</b>

<sup>1</sup> JD represents the judicial district in which the client was committed. Regional totals are a sum of their respective judicial districts. Regional totals reported here may differ slightly from those reported in the Monthly Population Report, where region is defined by active caseloads.

<sup>2</sup> Source: DOLA 2017 Estimates.

<sup>3</sup> Due to rounding, totals shown may not be an exact sum of the subtotals.

<sup>4</sup> Per 10,000 youth in the population.

## December 2017 SB94 Supplemental Report

### DYS Detention ADP and New Detention Admissions by Judicial District

Region	JD	2017 Population Estimates <sup>1</sup>	ADP		New Admits		
			December 2017	YTD	December 2017	YTD	YTD New Admit Rate <sup>2</sup>
<i>Central Region</i>							
	1st	56,020	21.2	28.4	42	317	56.6
	2nd	62,634	44.8	40.9	70	437	69.8
	5th	10,162	1.0	1.0	1	17	16.7
	18th	121,363	45.0	40.1	86	526	43.3
<b>Central Total</b>		<b>250,179</b>	<b>112.0</b>	<b>110.5</b>	<b>199</b>	<b>1,297</b>	<b>51.8</b>
<i>Northeast Region</i>							
	8th	32,983	8.8	11.4	22	136	41.2
	13th	8,520	2.5	4.3	3	29	34.0
	17th	71,425	22.9	22.8	41	259	36.3
	19th	36,924	10.4	14.8	27	218	59.0
	20th	32,693	6.2	6.5	10	64	19.6
<b>Northeast Total</b>		<b>182,545</b>	<b>50.9</b>	<b>59.8</b>	<b>103</b>	<b>706</b>	<b>38.7</b>
<i>Southern Region</i>							
	3rd	1,871	0.0	0.5	0	15	80.2
	4th	81,725	46.7	45.0	48	354	43.3
	10th	17,869	11.4	12.0	18	131	73.3
	11th	7,196	2.7	2.2	7	43	59.8
	12th	5,241	3.3	2.5	7	21	40.1
	15th	2,102	1.6	1.6	0	10	47.6
	16th	2,749	2.9	1.4	1	20	72.8
<b>Southern Total</b>		<b>118,753</b>	<b>68.5</b>	<b>65.1</b>	<b>81</b>	<b>594</b>	<b>50.0</b>
<i>Western Region</i>							
	6th	6,491	1.4	3.6	2	28	43.1
	7th	10,788	4.2	3.3	5	25	23.2
	9th	9,477	3.0	2.9	3	30	31.7
	14th	5,635	1.0	0.7	0	10	17.7
	21st	15,968	9.5	13.7	17	126	78.9
	22nd	3,108	3.9	3.4	1	16	51.5
<b>Western Total</b>		<b>51,467</b>	<b>23.0</b>	<b>27.6</b>	<b>28</b>	<b>235</b>	<b>45.7</b>
<i>Missing JD or Multiple JDs</i>			0.5	2.4			
<b>Statewide Total</b>		<b>602,944</b>	<b>255.1</b>	<b>265.4</b>	<b>411</b>	<b>2,832</b>	<b>47.0</b>

<sup>1</sup> Source: DOLA 2017 Estimates.

<sup>2</sup> Per 10,000 youth in the population.

# December 2017 SB94 Supplemental Report

DYS Detention LOS by Judicial District				
Region	JD	YTD Detention Releases	YTD LOS (days)	LOS (days) Compared to State AVG
<i>Central Region</i>				
	1st	328	14.1	-2.4
	2nd	437	15.7	-0.7
	5th	16	6.9	-9.5
	18th	515	13.4	-3.0
<b>Central Total</b>		<b>1,296</b>	<b>14.3</b>	<b>-2.2</b>
<i>Northeast Region</i>				
	8th	140	16.0	-0.4
	13th	33	29.1	12.7
	17th	258	15.3	-1.1
	19th	229	11.8	-4.6
	20th	69	20.6	4.1
<b>Northeast Total</b>		<b>729</b>	<b>15.5</b>	<b>-1.0</b>
<i>Southern Region</i>				
	3rd	16	4.9	-11.5
	4th	353	21.3	4.8
	10th	131	15.0	-1.4
	11th	40	8.2	-8.2
	12th	21	20.3	3.9
	15th	10	32.4	16.0
	16th	17	6.9	-9.5
<b>Southern Total</b>		<b>588</b>	<b>18.3</b>	<b>1.8</b>
<i>Western Region</i>				
	6th	32	22.8	6.4
	7th	23	19.5	3.1
	9th	27	15.8	-0.7
	14th	8	7.3	-9.2
	21st	121	16.7	0.3
	22nd	14	27.7	11.3
<b>Western Total</b>		<b>225</b>	<b>18.1</b>	<b>1.7</b>
<b>Statewide Total</b>		<b>2,843</b>	<b>16.4</b>	<b>-</b>

## December 2017 SB 94 Supplemental Report

### YTD DYS Detention ADP & Ethnicity by Judicial District

Region	JD	Anglo-American		African-American		Hispanic / Latino		Native-American		Asian-American		Other		TOTAL	
		ADP	%	ADP	%	ADP	%	ADP	%	ADP	%	ADP	%	ADP	%
<b>Central</b>															
	1st	14.1	49.7%	1.8	6.3%	11.1	39.0%	1.0	3.5%	0.2	0.7%	0.2	0.9%	28.4	100%
	2nd	4.7	11.4%	19.4	47.3%	16.0	39.2%	0.2	0.4%	0.2	0.4%	0.5	1.1%	40.9	100%
	5th	0.5	50.0%	0.0	0.0%	0.5	50.0%	0.0	0.0%	0.0	0.0%	0.0	0.0%	1.0	100%
	18th	17.2	42.9%	12.8	31.8%	8.6	21.5%	0.4	0.9%	0.6	1.6%	0.5	1.2%	40.1	100%
<b>Central Total</b>		<b>36.6</b>	<b>38.5%</b>	<b>33.9</b>	<b>21.4%</b>	<b>36.3</b>	<b>37.4%</b>	<b>1.6</b>	<b>1.2%</b>	<b>1.0</b>	<b>0.7%</b>	<b>1.2</b>	<b>0.8%</b>	<b>110.5</b>	<b>100%</b>
<b>Northeast</b>															
	8th	8.1	70.8%	0.6	5.4%	2.7	23.8%	0.0	0.0%	0.0	0.0%	0.0	0.0%	11.4	100%
	13th	1.9	43.9%	0.0	0.0%	2.4	55.5%	0.0	0.2%	0.0	0.0%	0.0	0.4%	4.3	100%
	17th	8.3	36.5%	4.0	17.6%	9.8	43.0%	0.5	2.0%	0.2	0.7%	0.0	0.1%	22.8	100%
	19th	5.2	34.8%	0.8	5.2%	8.7	58.9%	0.0	0.0%	0.0	0.1%	0.1	1.0%	14.8	100%
	20th	4.2	64.1%	0.2	3.5%	2.1	31.8%	0.0	0.0%	0.0	0.0%	0.0	0.6%	6.5	100%
<b>Northeast Total</b>		<b>27.6</b>	<b>50.0%</b>	<b>5.6</b>	<b>6.3%</b>	<b>25.7</b>	<b>42.6%</b>	<b>0.5</b>	<b>0.4%</b>	<b>0.2</b>	<b>0.2%</b>	<b>0.2</b>	<b>0.4%</b>	<b>59.8</b>	<b>100%</b>
<b>Southern</b>															
	3rd	0.2	38.0%	0.0	3.6%	0.3	56.7%	0.0	0.0%	0.0	0.0%	0.0	1.7%	0.5	100%
	4th	12.9	28.7%	18.8	41.7%	12.3	27.4%	0.1	0.2%	0.4	0.9%	0.5	1.0%	45.0	100%
	10th	3.2	26.3%	0.4	3.4%	7.7	64.0%	0.2	1.3%	0.0	0.0%	0.6	5.0%	12.0	100%
	11th	0.9	42.5%	1.0	43.8%	0.3	13.6%	0.0	0.0%	0.0	0.0%	0.0	0.0%	2.2	100%
	12th	0.6	25.1%	0.1	3.3%	1.6	66.0%	0.1	2.3%	0.0	0.0%	0.1	3.3%	2.5	100%
	15th	1.1	71.3%	0.0	0.0%	0.4	24.6%	0.1	4.1%	0.0	0.0%	0.0	0.0%	1.6	100%
	16th	0.9	67.6%	0.0	0.0%	0.4	30.2%	0.0	2.1%	0.0	0.0%	0.0	0.0%	1.4	100%
<b>Southern Total</b>		<b>19.8</b>	<b>42.8%</b>	<b>20.3</b>	<b>13.7%</b>	<b>23.0</b>	<b>40.4%</b>	<b>0.4</b>	<b>1.4%</b>	<b>0.4</b>	<b>0.1%</b>	<b>1.2</b>	<b>1.6%</b>	<b>65.1</b>	<b>100%</b>
<b>Western</b>															
	6th	2.5	70.2%	0.4	10.3%	0.2	7.0%	0.3	8.5%	0.0	0.0%	0.1	4.0%	3.6	100%
	7th	2.4	71.8%	0.0	5.4%	0.9	27.3%	0.0	0.8%	0.0	0.0%	0.0	0.1%	3.3	105%
	9th	1.8	62.0%	0.0	0.0%	1.1	38.0%	0.0	0.0%	0.0	0.0%	0.0	0.0%	2.9	100%
	14th	0.7	89.3%	0.1	10.7%	0.0	0.0%	0.0	0.0%	0.0	0.0%	0.0	0.0%	0.7	100%
	21st	10.6	77.4%	0.7	4.9%	2.4	17.3%	0.0	0.0%	0.0	0.0%	0.1	0.4%	13.7	100%
	22nd	2.4	70.8%	0.0	0.0%	0.0	0.0%	1.0	29.2%	0.0	0.0%	0.0	0.0%	3.4	100%
<b>Western Total</b>		<b>20.3</b>	<b>73.6%</b>	<b>1.1</b>	<b>5.2%</b>	<b>4.6</b>	<b>14.9%</b>	<b>1.3</b>	<b>6.4%</b>	<b>0.0</b>	<b>0.0%</b>	<b>0.2</b>	<b>0.8%</b>	<b>27.6</b>	<b>101%</b>
Missing JD Data		0.1		0.9		1.4		0.0		0.0		0.0		2.4	
<b>Statewide Total</b>		<b>104.4</b>	<b>39.3%</b>	<b>61.8</b>	<b>23.3%</b>	<b>91.0</b>	<b>34.3%</b>	<b>3.8</b>	<b>1.4%</b>	<b>1.6</b>	<b>0.6%</b>	<b>2.8</b>	<b>1.1%</b>	<b>265.4</b>	<b>100%</b>

**December 2017**  
**SB94 JDSAG Supplemental Report**

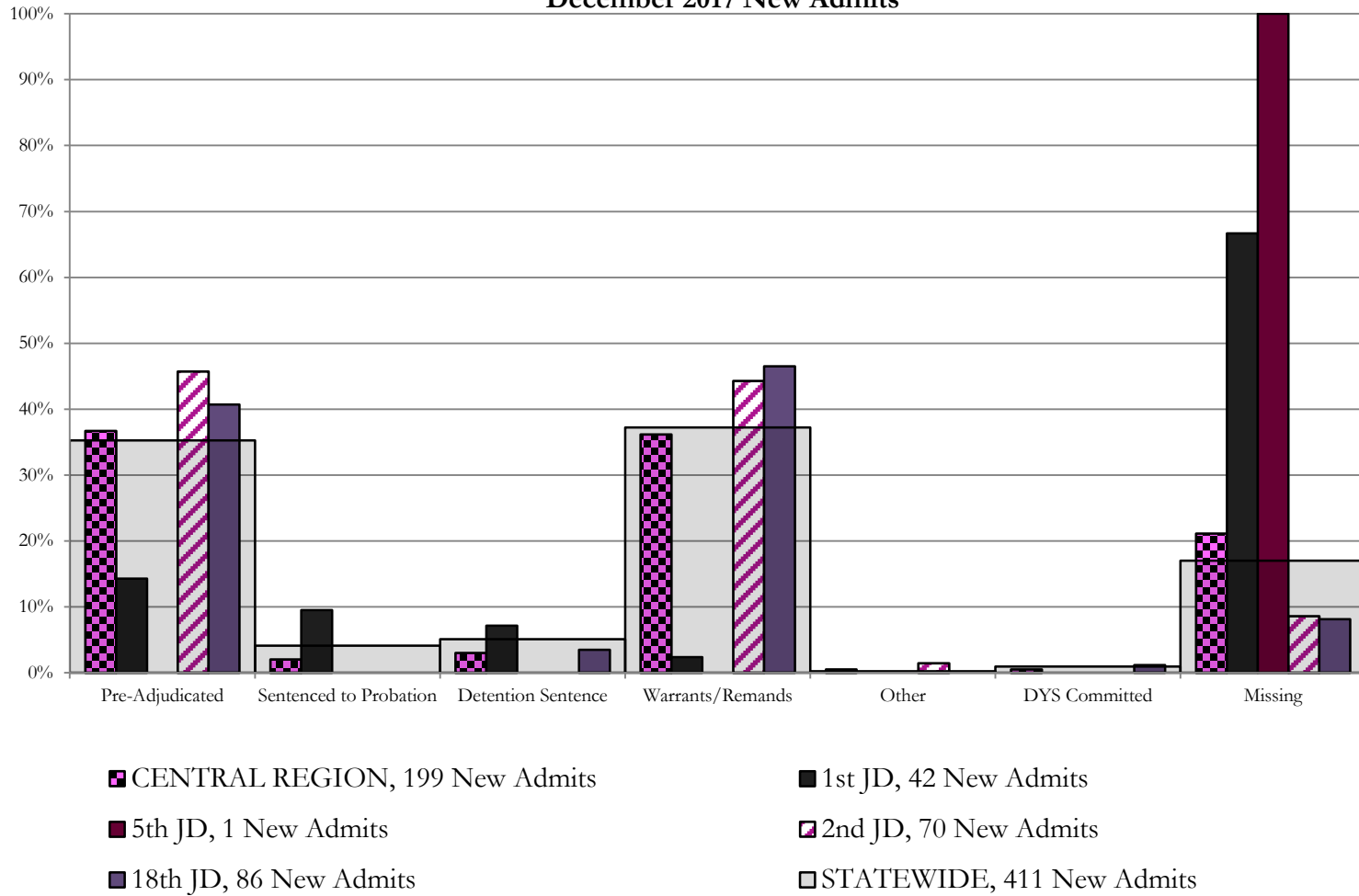
**SB94 Reason Detained (RD) by Judicial District**

Region	JD	Monthly New Admits	Pre-Adjudicated				Sentenced to Probation				Detention Sentence								Warrants/Remands				Other								DYS Committed				Missing					
			Felony		Misdemeanor		Technical Violator		New Charges		Probation Sentence		Detention Sentence		Valid Court Order (VCO) Truancy		Awaiting DSS (Social Services) Placement		Failure to Appear (FTA)		Failure to Comply (FTC)		Interstate Compact on Juveniles (ICJ) Hold		Immigration Hold		No Bond Hold		Out-of-Country Warrant		Institutional		Parole		Missing					
			#	%	#	%	#	%	#	%	#	%	#	%	#	%	#	%	#	%	#	%	#	%	#	%	#	%	#	%	#	%	#	%						
<i>Central Region</i>																																								
	1st	42	3	7.1%	3	7.1%	4	9.5%	0	0.0%	0	0.0%	3	7.1%	0	0.0%	0	0.0%	0	0.0%	0	0.0%	0	0.0%	0	0.0%	0	0.0%	0	0.0%	0	0.0%	0	0.0%	0	0.0%	28	66.7%		
	2nd	70	27	38.6%	5	7.1%	0	0.0%	0	0.0%	0	0.0%	0	0.0%	0	0.0%	0	0.0%	8	11.4%	23	32.9%	1	1.4%	0	0.0%	0	0.0%	0	0.0%	0	0.0%	0	0.0%	0	0.0%	6	8.6%		
	5th	1	0	0.0%	0	0.0%	0	0.0%	0	0.0%	0	0.0%	0	0.0%	0	0.0%	0	0.0%	0	0.0%	0	0.0%	0	0.0%	0	0.0%	0	0.0%	0	0.0%	0	0.0%	0	0.0%	1	100.0%				
	18th	86	15	17.4%	20	23.3%	0	0.0%	0	0.0%	0	0.0%	3	3.5%	0	0.0%	0	0.0%	10	11.6%	30	34.9%	0	0.0%	0	0.0%	0	0.0%	0	0.0%	0	0.0%	1	1.2%	0	0.0%	7	8.1%		
<b>Central Total</b>		<b>199</b>	<b>45</b>	<b>23%</b>	<b>28</b>	<b>14%</b>	<b>4</b>	<b>2.0%</b>	<b>0</b>	<b>0.0%</b>	<b>0</b>	<b>0.0%</b>	<b>6</b>	<b>3.0%</b>	<b>0</b>	<b>0.0%</b>	<b>0</b>	<b>0.0%</b>	<b>18</b>	<b>9%</b>	<b>54</b>	<b>27%</b>	<b>1</b>	<b>0.5%</b>	<b>0</b>	<b>0.0%</b>	<b>0</b>	<b>0.0%</b>	<b>0</b>	<b>0.0%</b>	<b>0</b>	<b>0.0%</b>	<b>1</b>	<b>0.5%</b>	<b>0</b>	<b>0.0%</b>	<b>42</b>	<b>21.1%</b>		
<i>Northeast Region</i>																																								
	8th	22	1	4.5%	1	4.5%	0	0.0%	0	0.0%	0	0.0%	3	13.6%	0	0.0%	0	0.0%	2	9.1%	7	31.8%	0	0.0%	0	0.0%	0	0.0%	0	0.0%	0	0.0%	0	0.0%	0	0.0%	8	36.4%		
	13th	3	0	0.0%	1	33.3%	0	0.0%	0	0.0%	0	0.0%	0	0.0%	0	0.0%	0	0.0%	0	0.0%	1	33.3%	0	0.0%	0	0.0%	0	0.0%	0	0.0%	0	0.0%	0	0.0%	0	0.0%	1	33.3%		
	17th	41	9	22.0%	0	0.0%	1	2.4%	0	0.0%	0	0.0%	2	4.9%	0	0.0%	0	0.0%	2	4.9%	18	43.9%	0	0.0%	0	0.0%	0	0.0%	0	0.0%	0	0.0%	0	0.0%	0	0.0%	9	22.0%		
	19th	27	8	29.6%	5	18.5%	4	14.8%	0	0.0%	0	0.0%	0	0.0%	1	3.7%	0	0.0%	2	7.4%	7	25.9%	0	0.0%	0	0.0%	0	0.0%	0	0.0%	0	0.0%	0	0.0%	0	0.0%	0	0.0%		
	20th	10	1	10.0%	1	10.0%	0	0.0%	0	0.0%	0	0.0%	3	30.0%	0	0.0%	2	20.0%	0	0.0%	0	0.0%	0	0.0%	0	0.0%	0	0.0%	0	0.0%	0	0.0%	0	0.0%	0	0.0%	3	30.0%		
<b>Northeast Total</b>		<b>103</b>	<b>19</b>	<b>18%</b>	<b>8</b>	<b>8%</b>	<b>5</b>	<b>4.9%</b>	<b>0</b>	<b>0.0%</b>	<b>0</b>	<b>0.0%</b>	<b>8</b>	<b>7.8%</b>	<b>1</b>	<b>1.0%</b>	<b>2</b>	<b>1.9%</b>	<b>6</b>	<b>5.8%</b>	<b>33</b>	<b>32%</b>	<b>0</b>	<b>0.0%</b>	<b>0</b>	<b>0.0%</b>	<b>0</b>	<b>0.0%</b>	<b>0</b>	<b>0.0%</b>	<b>0</b>	<b>0.0%</b>	<b>0</b>	<b>0.0%</b>	<b>0</b>	<b>0.0%</b>	<b>21</b>	<b>20%</b>		
<i>Southern Region</i>																																								
	3rd	0	0	0.0%	0	0%	0	0.0%	0	0.0%	0	0.0%	0	0.0%	0	0.0%	0	0.0%	0	0.0%	0	0.0%	0	0.0%	0	0.0%	0	0.0%	0	0.0%	0	0.0%	0	0.0%	0	0.0%	0	0.0%		
	4th	48	20	41.7%	5	10.4%	0	0.0%	2	4.2%	0	0.0%	0	0.0%	0	0.0%	0	0.0%	8	16.7%	9	18.8%	0	0.0%	0	0.0%	0	0.0%	0	0.0%	3	6.3%	0	0.0%	1	2.1%				
	10th	18	3	16.7%	0	0.0%	2	11.1%	3	16.7%	0	0.0%	0	0.0%	0	0.0%	0	0.0%	1	5.6%	9	50.0%	0	0.0%	0	0.0%	0	0.0%	0	0.0%	0	0.0%	0	0.0%	0	0.0%	0	0.0%		
	11th	7	1	14.3%	1	14.3%	0	0.0%	0	0.0%	0	0.0%	0	0.0%	0	0.0%	0	0.0%	0	0.0%	2	28.6%	0	0.0%	0	0.0%	0	0.0%	0	0.0%	0	0.0%	0	0.0%	3	42.9%				
	12th	7	4	57.1%	1	14.3%	0	0.0%	0	0.0%	0	0.0%	0	0.0%	0	0.0%	1	14.3%	0	0.0%	0	0.0%	0	0.0%	0	0.0%	0	0.0%	0	0.0%	0	0.0%	0	0.0%	1	14.3%				
	15th	0	0	0.0%	0	0.0%	0	0.0%	0	0.0%	0	0.0%	0	0.0%	0	0.0%	0	0.0%	0	0.0%	0	0.0%	0	0.0%	0	0.0%	0	0.0%	0	0.0%	0	0.0%	0	0.0%	0	0.0%	0	0.0%		
	16th	1	0	0.0%	0	0.0%	1	100.0%	0	0.0%	0	0.0%	0	0.0%	0	0.0%	0	0.0%	0	0.0%	0	0.0%	0	0.0%	0	0.0%	0	0.0%	0	0.0%	0	0.0%	0	0.0%	0	0.0%	0	0.0%		
<b>Southern Total</b>		<b>81</b>	<b>28</b>	<b>35%</b>	<b>7</b>	<b>9%</b>	<b>3</b>	<b>3.7%</b>	<b>5</b>	<b>6.2%</b>	<b>0</b>	<b>0.0%</b>	<b>0</b>	<b>0.0%</b>	<b>0</b>	<b>0.0%</b>	<b>1</b>	<b>1.2%</b>	<b>9</b>	<b>11%</b>	<b>20</b>	<b>25%</b>	<b>0</b>	<b>0.0%</b>	<b>0</b>	<b>0.0%</b>	<b>0</b>	<b>0.0%</b>	<b>0</b>	<b>0.0%</b>	<b>0</b>	<b>0.0%</b>	<b>3</b>	<b>3.7%</b>	<b>0</b>	<b>0.0%</b>	<b>5</b>	<b>6%</b>		
<i>Western Region</i>																																								
	6th	2	0	0.0%	0	0.0%	0	0.0%	0	0.0%	0	0.0%	0	0.0%	0	0.0%	0	0.0%	0	0.0%	1	50.0%	0	0.0%	0	0.0%	0	0.0%	0	0.0%	0	0.0%	0	0.0%	1	50%				
	7th	5	0	0.0%	0	0.0%	0	0.0%	0	0.0%	0	0.0%	3	60.0%	0	0.0%	0	0.0%	1	20.0%	1	20.0%	0	0.0%	0	0.0%	0	0.0%	0	0.0%	0	0.0%	0	0.0%	0	0.0%	0	0.0%		
	9th	3	0	0.0%	2	66.7%	0	0.0%	0	0.0%	0	0.0%	0	0.0%	0	0.0%	0	0.0%	0	0.0%	0	0.0%	0	0.0%	0	0.0%	0	0.0%	0	0.0%	0	0.0%	0	0.0%	1	33.3%				
	14th	0	0	0.0%	0	0.0%	0	0.0%	0	0.0%	0	0.0%	0	0.0%	0	0.0%	0	0.0%	0	0.0%	0	0.0%	0	0.0%	0	0.0%	0	0.0%	0	0.0%	0	0.0%	0	0.0%	0	0.0%	0	0.0%		
	21st	17	4	23.5%	3	17.6%	0	0.0%	0	0.0%	0	0.0%	0	0.0%	0	0.0%	0	0.0%	2	11.8%	8	47.1%	0	0.0%	0	0.0%	0	0.0%	0	0.0%	0	0.0%	0	0.0%	0	0.0%	0	0.0%		
	22nd	1	0	0.0%	1	100.0%	0	0.0%	0	0.0%	0	0.0%	0	0.0%	0	0.0%	0	0.0%	0	0.0%	0	0.0%	0	0.0%	0	0.0%	0	0.0%	0	0.0%	0	0.0%	0	0.0%	0	0.0%	0	0.0%		
<b>Western Total</b>		<b>28</b>	<b>4</b>	<b>14%</b>	<b>6</b>	<b>21.4%</b>	<b>0</b>	<b>0.0%</b>	<b>0</b>	<b>0.0%</b>	<b>0</b>	<b>0.0%</b>	<b>3</b>	<b>10.7%</b>	<b>0</b>	<b>0.0%</b>	<b>0</b>	<b>0.0%</b>	<b>3</b>	<b>10.7%</b>	<b>10</b>	<b>36%</b>	<b>0</b>	<b>0.0%</b>	<b>0</b>	<b>0.0%</b>	<b>0</b>	<b>0.0%</b>	<b>0</b>	<b>0.0%</b>	<b>0</b>	<b>0.0%</b>	<b>0</b>	<b>0.0%</b>	<b>0</b>	<b>0.0%</b>	<b>2</b>	<b>7%</b>		
<b>Individual RD Totals</b>		<b>411</b>	<b>96</b>	<b>23%</b>	<b>49</b>	<b>12%</b>	<b>12</b>	<b>2.9%</b>	<b>5</b>	<b>1.2%</b>	<b>0</b>	<b>0.0%</b>	<b>17</b>	<b>4.1%</b>	<b>1</b>	<b>0.2%</b>	<b>3</b>	<b>0.7%</b>	<b>36</b>	<b>9%</b>	<b>117</b>	<b>28%</b>	<b>1</b>	<b>0.2%</b>	<b>0</b>	<b>0.0%</b>	<b>0</b>	<b>0.0%</b>	<b>0</b>	<b>0.0%</b>	<b>0</b>	<b>0.0%</b>	<b>0</b>	<b>0.0%</b>	<b>4</b>	<b>1.0%</b>	<b>0</b>	<b>0.0%</b>	<b>70</b>	<b>17%</b>
<b>Statewide Totals</b>		<b>411</b>	<b>145</b>	<b>35.3%</b>	<b>17</b>	<b>4.1%</b>	<b>21</b>	<b>5.1%</b>	<b>153</b>	<b>37.2%</b>	<b>1</b>	<b>0.2%</b>	<b>3</b>	<b>0.7%</b>	<b>36</b>	<b>9%</b>	<b>117</b>	<b>28%</b>	<b>1</b>	<b>0.2%</b>	<b>0</b>	<b>0.0%</b>	<b>0</b>	<b>0.0%</b>	<b>0</b>	<b>0.0%</b>	<b>0</b>	<b>0.0%</b>	<b>0</b>	<b>0.0%</b>	<b>4</b>	<b>1.0%</b>	<b>0</b>	<b>0.0%</b>	<b>70</b>	<b>17%</b>				

# Central Region

## SB94 Reason Detained by Judicial District

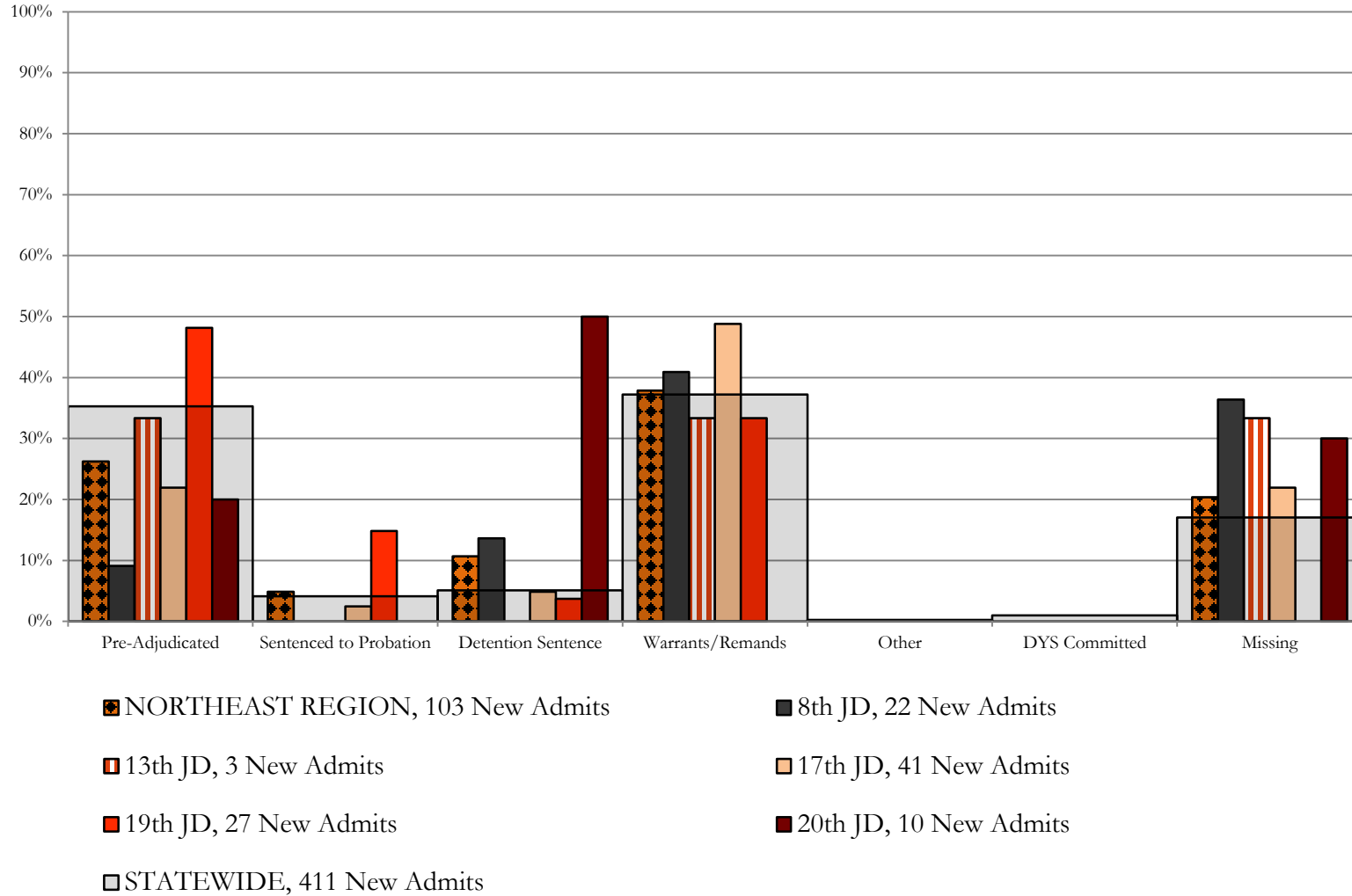
### December 2017 New Admits



# Northeast Region

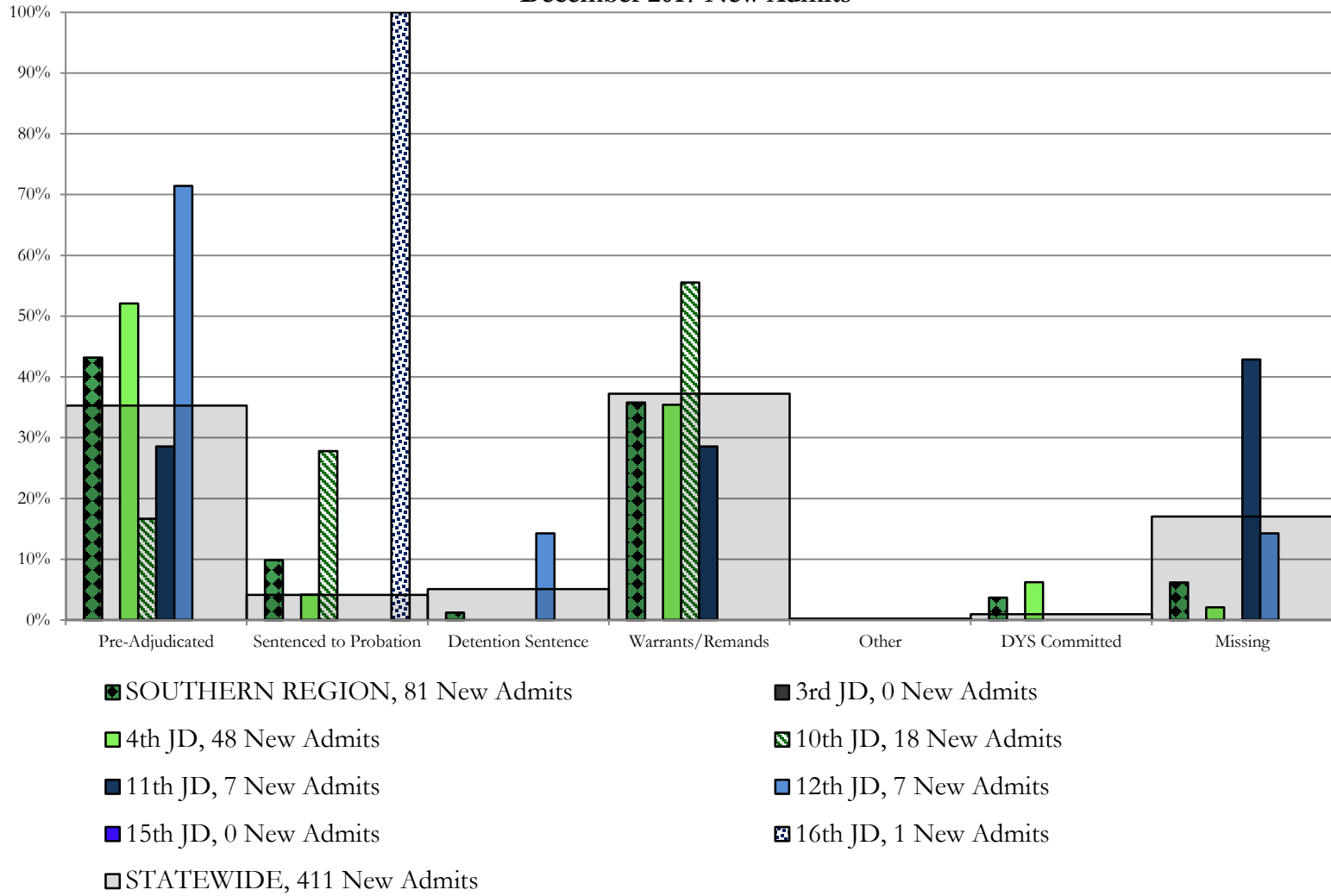
## SB94 Reason Detained by Judicial District

### December 2017 New Admits



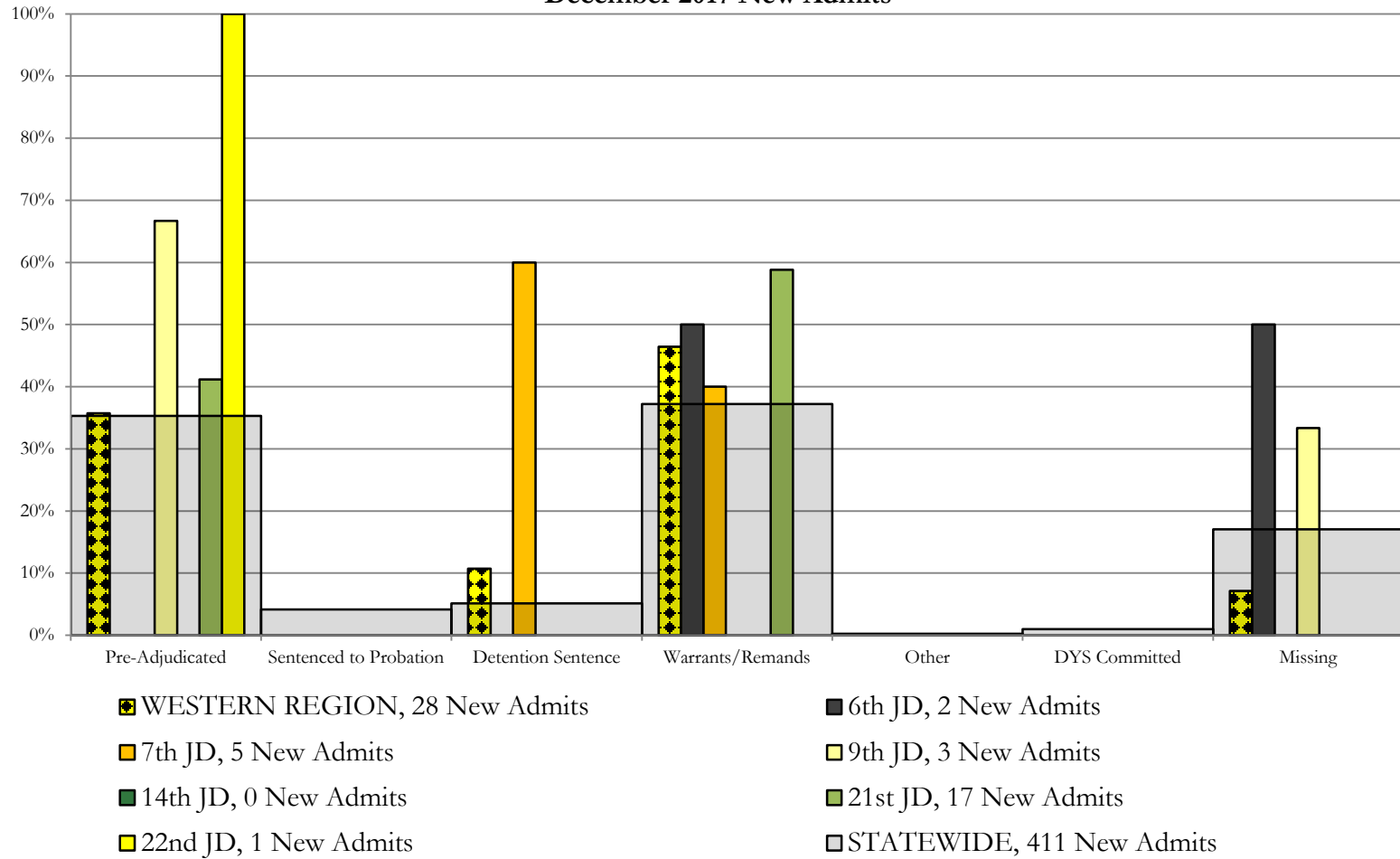


## Southern Region SB94 Reason Detained by Judicial District December 2017 New Admits



# Western Region

## SB94 Reason Detained by Judicial District December 2017 New Admits



## December 2017 SB94 JDSAG Supplemental Report

SB94 Reason Detained (RD) by Judicial District Year to Date

Region	JD	Year to Date New Admits	Pre-Adjudicated				Sentenced to Probation				Detention Sentence								Warrants/Remands				Other				DYS Committed				Missing			
			Felony		Misdemeanor		Technical Violator		New Charges		Probation Sentence		Detention Sentence		Valid Court Order (VCO) Truancy		Awaiting DSS (Social Services) Placement		Failure to Appear (FTA)		Failure to Comply (FTC)		Interstate Compact on Juveniles (ICJ) Hold		Immigration Hold		Institutional		Parole		Missing			
			#	%	#	%	#	%	#	%	#	%	#	%	#	%	#	%	#	%	#	%	#	%	#	%	#	%	#	%	#	%		
<i>Central Region</i>																																		
	1st	317	57	18.0%	51	16.1%	80	25.2%	2	0.6%	0	0.0%	29	9.1%	0	0.0%	0	0.0%	22	6.9%	41	12.9%	1	0.3%	0	0.0%	0	0.0%	0	0.0%	0	0.0%	34	10.7%
	2nd	437	152	34.8%	28	6.4%	1	0.2%	0	0.0%	0	0.0%	0	0.0%	0	0.0%	0	0.0%	52	11.9%	160	36.6%	7	1.6%	0	0.0%	0	0.0%	0	0.0%	0	0.0%	37	8.5%
	5th	17	7	41.2%	3	17.6%	0	0.0%	0	0.0%	0	0.0%	2	11.8%	0	0.0%	0	0.0%	0	0.0%	4	23.5%	0	0.0%	0	0.0%	0	0.0%	0	0.0%	1	5.9%		
	18th	526	127	24.1%	113	21.5%	0	0.0%	1	0.2%	0	0.0%	10	1.9%	0	0.0%	0	0.0%	39	7.4%	177	33.7%	2	0.4%	0	0.0%	2	0.4%	1	0.2%	54	10.3%		
<b>Central Total</b>		<b>1,297</b>	<b>343</b>	<b>26.4%</b>	<b>195</b>	<b>15.0%</b>	<b>81</b>	<b>6.2%</b>	<b>3</b>	<b>0.2%</b>	<b>0</b>	<b>0.0%</b>	<b>41</b>	<b>3.2%</b>	<b>0</b>	<b>0.0%</b>	<b>0</b>	<b>0.0%</b>	<b>113</b>	<b>8.7%</b>	<b>382</b>	<b>29.5%</b>	<b>10</b>	<b>0.8%</b>	<b>0</b>	<b>0.0%</b>	<b>2</b>	<b>0.1%</b>	<b>1</b>	<b>0.1%</b>	<b>126</b>	<b>9.7%</b>		
<i>Northeast Region</i>																																		
	8th	136	26	19.1%	22	16.2%	0	0.0%	0	0.0%	0	0.0%	8	5.9%	0	0.0%	0	0.0%	7	5.1%	60	44.1%	0	0.0%	0	0.0%	0	0.0%	0	0.0%	0	0.0%	13	9.6%
	13th	29	7	24.1%	7	24.1%	3	10.3%	0	0.0%	0	0.0%	0	0.0%	4	13.8%	0	0.0%	0	0.0%	7	24.1%	0	0.0%	0	0.0%	0	0.0%	0	0.0%	1	3.4%		
	17th	259	58	22.4%	4	1.5%	1	0.4%	0	0.0%	0	0.0%	3	1.2%	0	0.0%	0	0.0%	33	12.7%	97	37.5%	0	0.0%	0	0.0%	0	0.0%	0	0.0%	63	24.3%		
	19th	218	55	25.2%	37	17.0%	54	24.8%	0	0.0%	0	0.0%	2	0.9%	1	0.5%	1	0.5%	14	6.4%	52	23.9%	0	0.0%	0	0.0%	0	0.0%	0	0.0%	2	0.9%		
	20th	64	9	14.1%	2	3.1%	7	10.9%	0	0.0%	0	0.0%	13	20.3%	0	0.0%	20	31.3%	2	3.1%	6	9.4%	0	0.0%	0	0.0%	0	0.0%	0	0.0%	5	7.8%		
<b>Northeast Total</b>		<b>706</b>	<b>155</b>	<b>22.0%</b>	<b>72</b>	<b>10.2%</b>	<b>65</b>	<b>9.2%</b>	<b>0</b>	<b>0.0%</b>	<b>0</b>	<b>0.0%</b>	<b>26</b>	<b>3.7%</b>	<b>5</b>	<b>0.7%</b>	<b>21</b>	<b>3.0%</b>	<b>56</b>	<b>7.9%</b>	<b>222</b>	<b>31.4%</b>	<b>0</b>	<b>0.0%</b>	<b>0</b>	<b>0.0%</b>	<b>0</b>	<b>0.0%</b>	<b>0</b>	<b>0.0%</b>	<b>84</b>	<b>11.9%</b>		
<i>Southern Region</i>																																		
	3rd	15	5	33.3%	1	6.7%	3	20.0%	0	0.0%	0	0.0%	0	0.0%	0	0.0%	0	0.0%	2	13.3%	4	26.7%	0	0.0%	0	0.0%	0	0.0%	0	0.0%	0	0.0%		
	4th	354	155	43.8%	14	4.0%	2	0.6%	11	3.1%	0	0.0%	1	0.3%	2	0.6%	0	0.0%	47	13.3%	94	26.6%	1	0.3%	0	0.0%	11	3.1%	1	0.3%	15	4.2%		
	10th	131	26	19.8%	7	5.3%	3	2.3%	6	4.6%	0	0.0%	1	0.8%	2	1.5%	0	0.0%	12	9.2%	53	40.5%	0	0.0%	0	0.0%	0	0.0%	0	0.0%	21	16.0%		
	11th	43	14	32.6%	4	9.3%	0	0.0%	0	0.0%	0	0.0%	0	0.0%	0	0.0%	0	0.0%	1	2.3%	3	7.0%	0	0.0%	0	0.0%	0	0.0%	0	0.0%	21	48.8%		
	12th	21	13	61.9%	3	14.3%	0	0.0%	0	0.0%	0	0.0%	0	0.0%	0	0.0%	1	4.8%	0	0.0%	3	14.3%	0	0.0%	0	0.0%	0	0.0%	0	0.0%	1	4.8%		
	15th	10	4	40.0%	1	10.0%	0	0.0%	0	0.0%	0	0.0%	0	0.0%	0	0.0%	0	0.0%	0	0.0%	3	30.0%	1	10.0%	0	0.0%	0	0.0%	0	0.0%	0	0.0%		
	16th	20	11	55.0%	4	20.0%	1	5.0%	0	0.0%	0	0.0%	2	10.0%	0	0.0%	0	0.0%	0	0.0%	1	5.0%	0	0.0%	0	0.0%	0	0.0%	0	0.0%	1	5.0%		
<b>Southern Total</b>		<b>594</b>	<b>228</b>	<b>38.4%</b>	<b>34</b>	<b>5.7%</b>	<b>10</b>	<b>1.7%</b>	<b>17</b>	<b>2.9%</b>	<b>0</b>	<b>0.0%</b>	<b>4</b>	<b>0.7%</b>	<b>4</b>	<b>0.7%</b>	<b>1</b>	<b>0.2%</b>	<b>62</b>	<b>10.4%</b>	<b>161</b>	<b>27.1%</b>	<b>2</b>	<b>0.3%</b>	<b>0</b>	<b>0.0%</b>	<b>11</b>	<b>1.9%</b>	<b>1</b>	<b>0.2%</b>	<b>59</b>	<b>9.9%</b>		
<i>Western Region</i>																																		
	6th	28	4	14.3%	3	10.7%	1	3.6%	0	0.0%	0	0.0%	0	0.0%	0	0.0%	0	0.0%	0	0.0%	8	28.6%	0	0.0%	0	0.0%	0	0.0%	0	0.0%	12	42.9%		
	7th	25	4	16.0%	2	8.0%	2	8.0%	0	0.0%	0	0.0%	5	20.0%	0	0.0%	0	0.0%	4	16.0%	6	24.0%	0	0.0%	0	0.0%	0	0.0%	0	0.0%	2	8.0%		
	9th	30	8	26.7%	7	23.3%	3	10.0%	0	0.0%	0	0.0%	1	3.3%	0	0.0%	0	0.0%	0	0.0%	3	10.0%	0	0.0%	0	0.0%	0	0.0%	0	0.0%	8	26.7%		
	14th	10	3	30.0%	2	20.0%	0	0.0%	0	0.0%	0	0.0%	0	0.0%	0	0.0%	0	0.0%	0	0.0%	2	20.0%	0	0.0%	0	0.0%	0	0.0%	0	0.0%	3	30.0%		
	21st	126	40	31.7%	23	18.3%	0	0.0%	0	0.0%	0	0.0%	4	3.2%	0	0.0%	0	0.0%	11	8.7%	46	36.5%	0	0.0%	0	0.0%	0	0.0%	0	0.0%	2	1.6%		
	22nd	16	1	6.3%	2	12.5%	0	0.0%	0	0.0%	0	0.0%	0	0.0%	0	0.0%	0	0.0%	2	12.5%	0	0.0%	0	0.0%	0	0.0%	0	0.0%	0	0.0%	11	68.8%		
<b>Western Total</b>		<b>235</b>	<b>60</b>	<b>25.5%</b>	<b>39</b>	<b>16.6%</b>	<b>6</b>	<b>2.6%</b>	<b>0</b>	<b>0.0%</b>	<b>0</b>	<b>0.0%</b>	<b>10</b>	<b>4.3%</b>	<b>0</b>	<b>0.0%</b>	<b>0</b>	<b>0.0%</b>	<b>17</b>	<b>7.2%</b>	<b>65</b>	<b>27.7%</b>	<b>0</b>	<b>0.0%</b>	<b>0</b>	<b>0.0%</b>	<b>0</b>	<b>0.0%</b>	<b>0</b>	<b>0.0%</b>	<b>38</b>	<b>16.2%</b>		
<b>Individual RD Totals</b>		<b>2,832</b>	<b>786</b>	<b>27.8%</b>	<b>340</b>	<b>12.0%</b>	<b>162</b>	<b>5.7%</b>	<b>20</b>	<b>0.7%</b>	<b>0</b>	<b>0.0%</b>	<b>81</b>	<b>2.9%</b>	<b>9</b>	<b>0.1%</b>	<b>22</b>	<b>0.1%</b>	<b>248</b>	<b>8.8%</b>	<b>830</b>	<b>29.3%</b>	<b>12</b>	<b>0.4%</b>	<b>0</b>	<b>0.0%</b>	<b>13</b>	<b>0.5%</b>	<b>2</b>	<b>0.1%</b>	<b>307</b>	<b>10.8%</b>		
<b>Statewide Totals</b>		<b>2,832</b>	<b>1,126</b>	<b>39.8%</b>	<b>182</b>	<b>6.4%</b>	<b>112</b>	<b>4.0%</b>	<b>1078</b>	<b>38.1%</b>	<b>12</b>	<b>0.4%</b>	<b>0</b>	<b>0.0%</b>	<b>13</b>	<b>0.5%</b>	<b>2</b>	<b>0.1%</b>	<b>307</b>	<b>10.8%</b>														

# December 2017 SB94 Supplemental Report

## DYC Detention Maximum Youth Served by Judicial District<sup>1</sup>

Region	JD	Detention Capacity	Detention ADP		Maximum Youth Served on a Single Day <sup>2,3</sup>			
			December 2017	YTD	December 2017		YTD	
					Number of Youth	% of Detention Capacity	Number of Youth	% of Detention Capacity
<i>Central Region</i>								
	1st	37	21.2	28.4	29	78.4%	40	108.1%
	2nd	64	44.8	40.9	51	79.7%	54	84.4%
	5th	4	1.0	1.0	2	50.0%	4	100.0%
	18th	61	45.0	40.1	56	91.8%	56	91.8%
<b>Central Region</b>		<b>166</b>	<b>112.0</b>	<b>110.5</b>	<b>130</b>	<b>78.3%</b>	<b>135</b>	<b>81.3%</b>
<i>Northeast Region</i>								
	8th	21	8.8	11.4	12	57.1%	18	85.7%
	13th	5	2.5	4.3	4	80.0%	7	140.0%
	17th	30	22.9	22.8	27	90.0%	30	100.0%
	19th	25	10.4	14.8	17	68.0%	27	108.0%
	20th	13	6.2	6.5	10	76.9%	11	84.6%
<b>Northeast Region</b>		<b>94</b>	<b>50.9</b>	<b>59.8</b>	<b>65</b>	<b>69.1%</b>	<b>76</b>	<b>80.9%</b>
<i>Southern Region</i>								
	3rd	2	0.0	0.5	0	0.0%	2	100.0%
	4th	51	46.7	45.0	51	100.0%	54	105.9%
	10th	13	11.4	12.0	16	123.1%	19	146.2%
	11th	8	2.7	2.2	5	62.5%	6	75.0%
	12th	4	3.3	2.5	5	125.0%	5	125.0%
	15th	2	1.6	1.6	2	100.0%	3	150.0%
	16th	3	2.9	1.4	3	100.0%	4	133.3%
<b>Southern Region</b>		<b>83</b>	<b>68.5</b>	<b>65.1</b>	<b>76</b>	<b>91.6%</b>	<b>78</b>	<b>94.0%</b>
<i>Western Region</i>								
	6th	5	1.4	3.6	3	60.0%	7	140.0%
	7th	7	4.2	3.3	6	85.7%	7	100.0%
	9th	6	3.0	2.9	6	100.0%	8	133.3%
	14th	3	1.0	0.7	1	33.3%	3	100.0%
	21st	14	9.5	13.7	12	85.7%	19	135.7%
	22nd	4	3.9	3.4	5	125.0%	6	150.0%
<b>Western Region</b>		<b>39</b>	<b>23.0</b>	<b>27.6</b>	<b>30</b>	<b>76.9%</b>	<b>37</b>	<b>94.9%</b>
<i>Missing JD or Multiple JDs</i>			0.5	2.4				
<b>Statewide</b>		<b>382</b>	<b>255.1</b>	<b>265.4</b>	<b>288</b>	<b>75.4%</b>	<b>301</b>	<b>78.8%</b>

<sup>1</sup> Maximum youth served is the highest number of youth in detention on a single day during the month or fiscal year.

<sup>2</sup> Regional figures are not the sum of judicial districts, but represent the maximum count on one day for the entire region.

<sup>3</sup> State figures are not the sum of regional figures, but represent the maximum count on one day for the entire state.

## December 2017 SB94 Supplemental Report

### SB94 Community ADP by Judicial District

Region	JD	Committed		Diversion		ICJ		Municipal		Pre-Adjudicated		Sentenced		VCO		Total	
		December	YTD	December	YTD	December	YTD	December	YTD	December	YTD	December	YTD	December	YTD	December	YTD
<i>Central Region</i>																	
	1st	0.0	0.0	0.4	0.1	0.0	0.0	8.8	6.7	288.7	243.1	20.7	24.4	0.0	0.0	318.6	274.2
	2nd	1.0	0.3	0.0	0.0	1.0	0.3	0.0	0.8	156.8	135.0	33.4	27.8	0.0	0.0	192.2	164.1
	5th	0.0	0.0	15.0	13.7	0.0	0.0	0.0	0.0	15.0	13.3	29.0	29.8	0.0	0.0	59.0	56.8
	18th	0.3	1.0	1.0	0.8	0.0	0.0	0.0	0.0	283.2	246.0	28.5	25.0	1.0	1.6	314.0	274.3
<b>Central Total</b>		<b>1.3</b>	<b>1.3</b>	<b>16.4</b>	<b>14.6</b>	<b>1.0</b>	<b>0.3</b>	<b>8.8</b>	<b>7.5</b>	<b>743.7</b>	<b>637.4</b>	<b>111.5</b>	<b>107.0</b>	<b>1.0</b>	<b>1.6</b>	<b>883.8</b>	<b>769.6</b>
<i>Northeast Region</i>																	
	8th	0.0	0.0	1.0	1.0	0.0	0.0	0.0	0.0	63.3	61.0	67.0	62.8	0.0	0.0	131.3	124.8
	13th	0.0	0.0	0.0	0.0	0.0	0.0	0.0	0.0	13.1	13.7	2.0	2.6	5.0	5.3	20.1	21.6
	17th	3.0	2.2	0.0	0.0	0.0	0.0	0.0	0.0	172.2	156.3	15.1	56.8	0.0	0.0	190.2	215.2
	19th	0.3	0.2	0.8	0.7	0.0	0.0	3.0	1.6	53.0	48.6	24.8	27.3	4.0	2.0	85.9	80.4
	20th	1.4	0.9	10.0	7.6	0.0	0.0	0.0	0.0	98.6	63.9	26.6	16.9	17.6	7.9	154.1	97.2
<b>Northeast Total</b>		<b>4.7</b>	<b>3.3</b>	<b>11.8</b>	<b>9.4</b>	<b>0.0</b>	<b>0.0</b>	<b>3.0</b>	<b>1.6</b>	<b>400.2</b>	<b>343.4</b>	<b>135.5</b>	<b>166.5</b>	<b>26.6</b>	<b>15.2</b>	<b>581.7</b>	<b>539.3</b>
<i>Southern Region</i>																	
	3rd	0.0	0.0	0.0	0.0	0.0	0.0	0.0	0.0	9.5	9.8	4.0	6.1	0.0	0.0	13.5	15.9
	4th	0.1	1.5	0.0	0.0	0.0	0.0	126.1	116.7	120.5	102.3	46.3	45.2	0.0	0.0	293.0	265.7
	10th	2.5	2.3	0.0	0.0	1.0	1.0	2.0	2.2	17.8	15.0	22.6	24.6	2.3	2.1	48.2	47.1
	11th	1.0	1.2	0.0	0.2	0.0	0.0	9.0	8.7	15.2	12.2	19.2	16.3	1.0	1.0	45.4	39.5
	12th	0.0	0.0	4.0	3.2	0.0	0.0	4.6	2.7	13.9	10.8	3.6	2.0	0.0	0.0	26.1	18.7
	15th	0.0	0.0	1.0	0.6	0.0	0.0	0.0	0.0	4.0	4.5	15.1	8.3	0.0	0.0	20.1	13.4
	16th	0.0	0.0	0.0	0.0	0.0	0.0	0.0	0.0	15.2	9.9	7.0	8.3	10.1	14.6	32.3	32.8
<b>Southern Total</b>		<b>3.6</b>	<b>5.1</b>	<b>5.0</b>	<b>4.0</b>	<b>1.0</b>	<b>1.0</b>	<b>141.7</b>	<b>130.3</b>	<b>196.2</b>	<b>164.4</b>	<b>117.8</b>	<b>110.7</b>	<b>13.4</b>	<b>17.6</b>	<b>478.6</b>	<b>433.1</b>
<i>Western Region</i>																	
	6th	0.0	0.0	0.0	0.0	0.0	0.0	0.0	0.0	7.8	10.4	1.0	1.0	0.0	0.0	8.8	11.4
	7th	0.0	0.0	7.3	5.4	0.0	0.0	0.0	0.0	21.0	18.2	20.1	20.8	0.0	0.0	48.4	44.5
	9th	0.0	0.0	0.0	0.1	0.0	0.0	3.5	4.8	13.8	11.9	2.4	1.8	0.0	0.0	19.7	18.6
	14th	0.4	0.1	5.0	6.9	0.0	0.0	0.0	0.0	3.4	3.0	0.0	0.2	0.0	0.0	8.8	10.0
	21st	0.0	0.0	0.0	0.0	0.0	0.0	0.0	0.0	43.3	40.7	11.9	15.4	0.0	0.0	55.2	56.2
	22nd	0.0	0.0	0.0	0.0	0.0	0.0	0.0	0.0	6.8	6.9	6.0	5.1	0.0	0.0	12.8	12.0
<b>Western Total</b>		<b>0.4</b>	<b>0.1</b>	<b>12.3</b>	<b>12.4</b>	<b>0.0</b>	<b>0.0</b>	<b>3.5</b>	<b>4.8</b>	<b>96.0</b>	<b>91.2</b>	<b>41.4</b>	<b>44.3</b>	<b>0.0</b>	<b>0.0</b>	<b>153.6</b>	<b>152.7</b>
<b>Statewide Total</b>		<b>9.9</b>	<b>9.7</b>	<b>45.5</b>	<b>40.3</b>	<b>2.0</b>	<b>1.3</b>	<b>157.0</b>	<b>144.2</b>	<b>1436.1</b>	<b>1236.3</b>	<b>406.2</b>	<b>428.5</b>	<b>41.0</b>	<b>34.4</b>	<b>2097.6</b>	<b>1894.7</b>