

# November 2017 FY 2017-2018 SB94 JDSAG SUPPLEMENTAL REPORT

---

Prepared by the Division of Youth Services (DYS)  
Data Management and Analysis  
January 2, 2017



**COLORADO**

**Office of Children,  
Youth & Families**

Division of Youth Services

# November 2017 SB94 Supplemental Report

## DYS Commitment ADP & New Commitments by Judicial District

Region	JD <sup>1</sup>	2018 Population Estimates <sup>2</sup>	ADP <sup>3</sup>		New Commitments		
			November 2017	YTD	November 2017	YTD	YTD Rate <sup>4</sup>
<i>Central Region</i>							
	1st	56,139	80.0	76.8	6	19	3.4
	2nd	65,275	95.7	96.3	3	24	3.7
	5th	10,694	8.0	8.4	0	0	0.0
	18th	122,766	72.2	74.6	2	22	1.8
<b>Central Total</b>		<b>254,874</b>	<b>255.8</b>	<b>256.0</b>	<b>11</b>	<b>65</b>	<b>2.6</b>
<i>Northeast Region</i>							
	8th	34,025	39.0	39.6	1	10	2.9
	13th	8,531	7.2	7.7	1	2	2.3
	17th	73,588	62.4	65.3	1	10	1.4
	19th	37,441	57.5	57.4	6	13	3.5
	20th	33,056	9.2	10.0	0	1	0.3
<b>Northeast Total</b>		<b>186,641</b>	<b>175.3</b>	<b>180.0</b>	<b>9</b>	<b>36</b>	<b>1.9</b>
<i>Southern Region</i>							
	3rd	1,785	0.3	0.9	0	0	0.0
	4th	83,158	107.2	93.8	4	38	4.6
	10th	18,165	32.0	34.2	0	3	1.7
	11th	7,111	5.7	6.0	0	1	1.4
	12th	5,276	7.0	6.6	0	0	0.0
	15th	2,117	5.9	5.4	2	5	23.6
	16th	2,827	0.0	0.0	0	0	0.0
<b>Southern Total</b>		<b>120,439</b>	<b>158.1</b>	<b>146.9</b>	<b>6</b>	<b>47</b>	<b>3.9</b>
<i>Western Region</i>							
	6th	6,710	9.0	9.0	0	4	6.0
	7th	10,675	7.6	9.3	0	2	1.9
	9th	9,607	5.0	5.6	0	0	0.0
	14th	5,587	2.0	2.0	0	1	1.8
	21st	16,016	32.1	34.5	3	12	7.5
	22nd	3,144	5.0	4.6	0	1	3.2
<b>Western Total</b>		<b>51,739</b>	<b>60.7</b>	<b>64.9</b>	<b>3</b>	<b>20</b>	<b>3.9</b>
<b>Statewide Total</b>		<b>613,693</b>	<b>649.8</b>	<b>647.8</b>	<b>29</b>	<b>168</b>	<b>2.7</b>

<sup>1</sup> JD represents the judicial district in which the client was committed. Regional totals are a sum of their respective judicial districts. Regional totals reported here may differ slightly from those reported in the Monthly Population Report, where region is defined by active caseloads.

<sup>2</sup> Source: DOLA 2018 Estimates.

<sup>3</sup> Due to rounding, totals shown may not be an exact sum of the subtotals.

<sup>4</sup> Per 10,000 youth in the population.

# November 2017

## SB94 Supplemental Report

### DYS Detention ADP and New Detention Admissions by Judicial District

Region	JD	2018 Population Estimates <sup>1</sup>	ADP		New Admits		
			November 2017	YTD	November 2017	YTD	YTD New Admit Rate <sup>2</sup>
<i>Central Region</i>							
	1st	56,139	21.6	29.8	48	274	48.8
	2nd	65,275	43.2	40.1	80	367	56.2
	5th	10,694	1.6	1.0	2	16	15.0
	18th	122,766	45.9	39.5	90	440	35.8
<b>Central Total</b>		<b>254,874</b>	<b>112.3</b>	<b>110.4</b>	<b>220</b>	<b>1,097</b>	<b>43.0</b>
<i>Northeast Region</i>							
	8th	34,025	10.3	12.1	22	115	33.8
	13th	8,531	4.1	4.6	4	26	30.5
	17th	73,588	21.1	22.8	40	218	29.6
	19th	37,441	15.3	15.7	32	190	50.7
	20th	33,056	7.5	6.5	12	54	16.3
<b>Northeast Total</b>		<b>186,641</b>	<b>58.2</b>	<b>61.8</b>	<b>110</b>	<b>603</b>	<b>32.3</b>
<i>Southern Region</i>							
	3rd	1,785	0.6	0.5	2	15	84.0
	4th	83,158	46.8	44.6	58	306	36.8
	10th	18,165	12.1	12.2	19	113	62.2
	11th	7,111	1.7	2.1	3	36	50.6
	12th	5,276	3.0	2.3	1	14	26.5
	15th	2,117	2.3	1.5	2	10	47.2
	16th	2,827	1.2	1.1	5	19	67.2
<b>Southern Total</b>		<b>120,439</b>	<b>67.6</b>	<b>64.4</b>	<b>90</b>	<b>513</b>	<b>42.6</b>
<i>Western Region</i>							
	6th	6,710	1.4	4.0	4	26	38.7
	7th	10,675	5.1	3.2	4	20	18.7
	9th	9,607	4.9	2.9	8	27	28.1
	14th	5,587	0.9	0.7	4	10	17.9
	21st	16,016	12.3	14.5	25	109	68.1
	22nd	3,144	5.4	3.3	1	15	47.7
<b>Western Total</b>		<b>51,739</b>	<b>30.0</b>	<b>28.5</b>	<b>46</b>	<b>207</b>	<b>40.0</b>
<i>Missing JD or Multiple JDs</i>			<i>0.7</i>	<i>1.8</i>			
<b>Statewide Total</b>		<b>613,693</b>	<b>268.8</b>	<b>266.9</b>	<b>466</b>	<b>2,420</b>	<b>39.4</b>

<sup>1</sup> Source: DOLA 2018 Estimates.

<sup>2</sup> Per 10,000 youth in the population.

# November 2017 SB94 Supplemental Report

## DYS Detention LOS by Judicial District

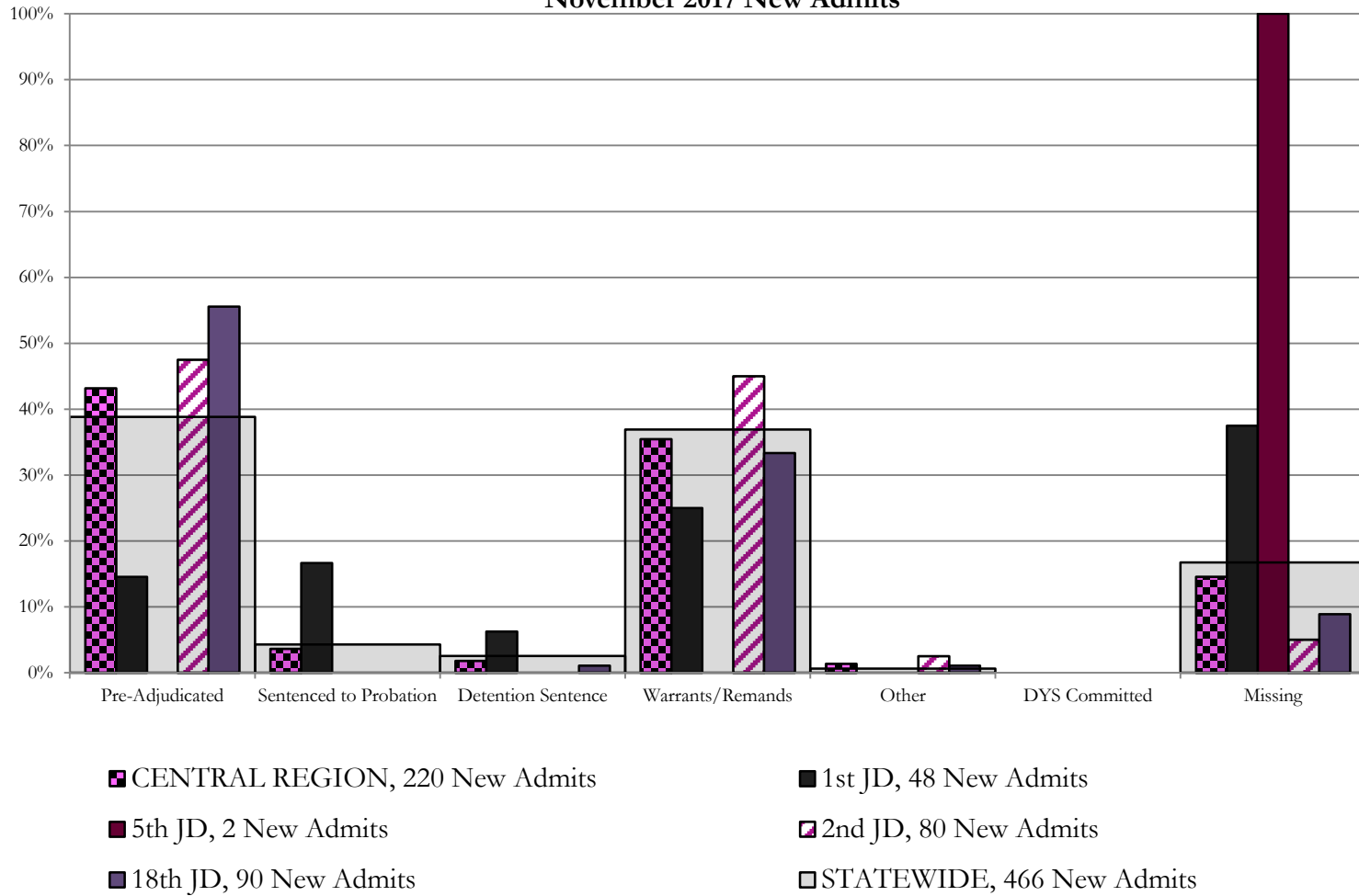
Region	JD	YTD Detention Releases	YTD LOS (days)	LOS (days) Compared to State AVG
<i>Central Region</i>				
	1st	280	14.8	-1.6
	2nd	367	14.9	-1.5
	5th	15	7.3	-9.1
	18th	420	13.4	-3.0
<b>Central Total</b>		<b>1,082</b>	<b>14.2</b>	<b>-2.2</b>
<i>Northeast Region</i>				
	8th	122	17.1	0.7
	13th	28	24.4	8.0
	17th	216	15.9	-0.5
	19th	196	12.1	-4.3
	20th	54	19.0	2.6
<b>Northeast Total</b>		<b>616</b>	<b>15.6</b>	<b>-0.8</b>
<i>Southern Region</i>				
	3rd	16	4.9	-11.5
	4th	301	20.9	4.5
	10th	113	14.5	-1.9
	11th	37	8.3	-8.1
	12th	14	20.9	4.5
	15th	9	33.2	16.8
	16th	17	6.9	-9.5
<b>Southern Total</b>		<b>507</b>	<b>17.8</b>	<b>1.4</b>
<i>Western Region</i>				
	6th	30	24.0	7.6
	7th	16	17.9	1.5
	9th	24	12.9	-3.5
	14th	8	7.3	-9.1
	21st	107	17.2	0.8
	22nd	12	29.1	12.7
<b>Western Total</b>		<b>197</b>	<b>18.1</b>	<b>1.7</b>
<b>Statewide Total</b>		<b>2,404</b>	<b>16.4</b>	<b>-</b>



# Central Region

## SB94 Reason Detained by Judicial District

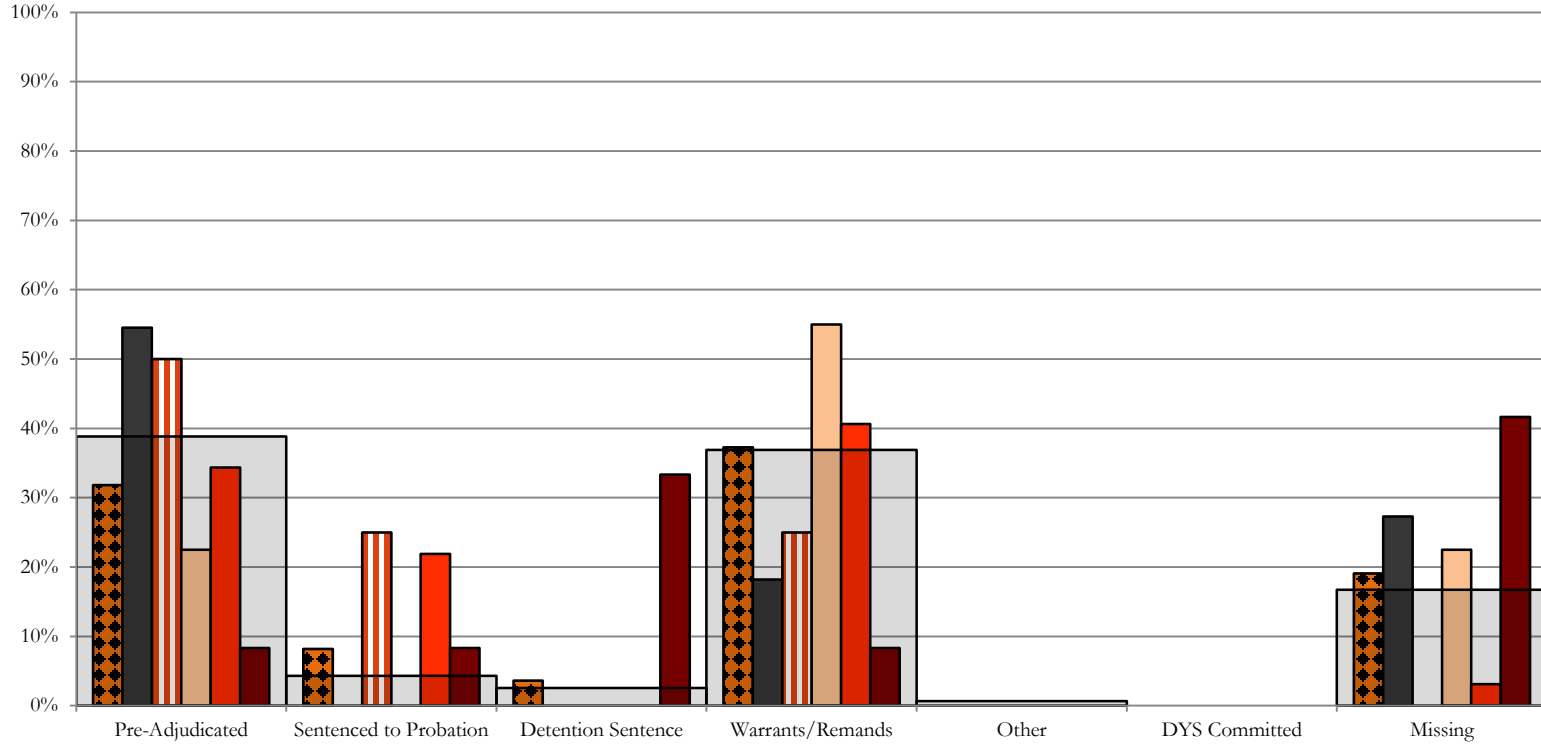
### November 2017 New Admits



# Northeast Region

## SB94 Reason Detained by Judicial District

### November 2017 New Admits



■ NORTHEAST REGION, 110 New Admits

■ 8th JD, 22 New Admits

■ 13th JD, 4 New Admits

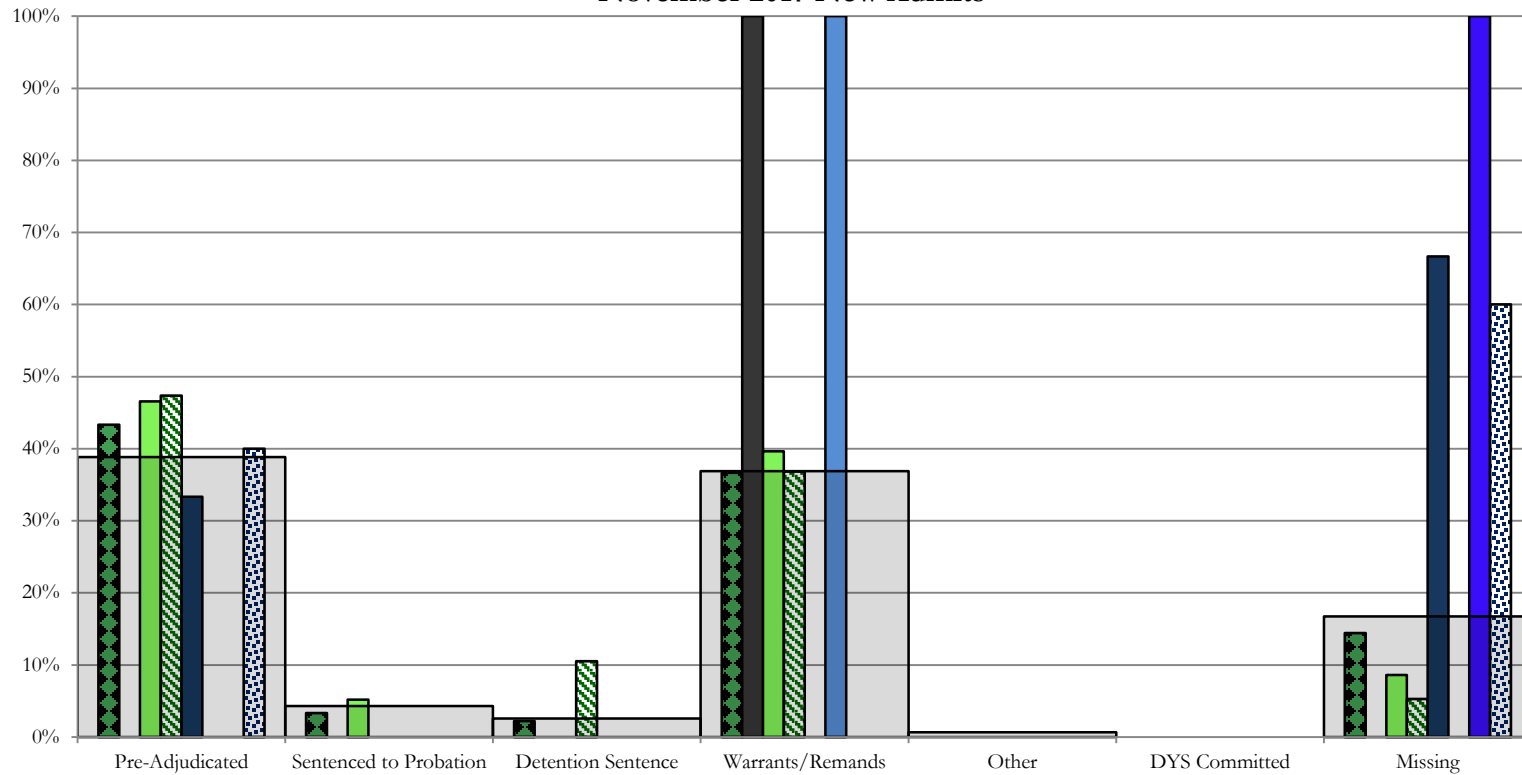
■ 17th JD, 40 New Admits

■ 19th JD, 32 New Admits

■ 20th JD, 12 New Admits

■ STATEWIDE, 466 New Admits

## Southern Region SB94 Reason Detained by Judicial District November 2017 New Admits



■ SOUTHERN REGION, 90 New Admits

■ 4th JD, 58 New Admits

■ 11th JD, 3 New Admits

■ 15th JD, 2 New Admits

■ STATEWIDE, 466 New Admits

■ 3rd JD, 2 New Admits

■ 10th JD, 19 New Admits

■ 12th JD, 1 New Admits

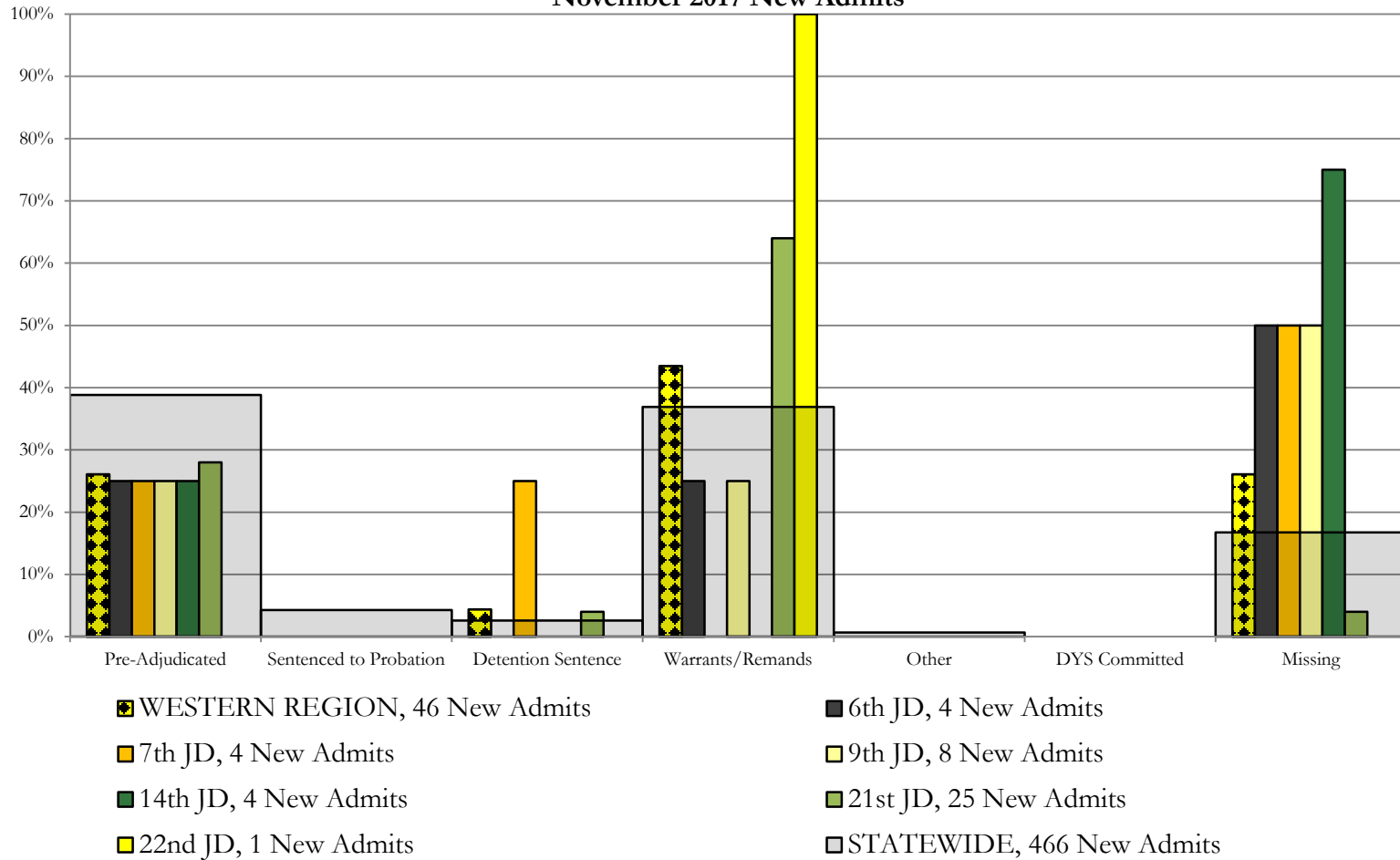
■ 16th JD, 5 New Admits



## Western Region

### SB94 Reason Detained by Judicial District

#### November 2017 New Admits



# November 2017 SB94 Supplemental Report

## DYS Detention Maximum Youth Served by Judicial District<sup>1</sup>

Region	JD	Detention Capacity	Detention ADP		Maximum Youth Served on a Single Day <sup>2,3</sup>			
			November 2017	YTD	November 2017		YTD	
					Number of Youth	% of Detention Capacity	Number of Youth	% of Detention Capacity
<i>Central Region</i>								
	1st	37	21.6	29.8	28	75.7%	40	108.1%
	2nd	64	43.2	40.1	49	76.6%	54	84.4%
	5th	4	1.6	1.0	2	50.0%	4	100.0%
	18th	61	45.9	39.5	53	86.9%	53	86.9%
<b>Central Region</b>		<b>166</b>	<b>112.3</b>	<b>110.4</b>	<b>127</b>	<b>76.5%</b>	<b>135</b>	<b>81.3%</b>
<i>Northeast Region</i>								
	8th	21	10.3	12.1	14	66.7%	18	85.7%
	13th	5	4.1	4.6	6	120.0%	7	140.0%
	17th	30	21.1	22.8	25	83.3%	30	100.0%
	19th	25	15.3	15.7	20	80.0%	27	108.0%
	20th	13	7.5	6.5	10	76.9%	11	84.6%
<b>Northeast Region</b>		<b>94</b>	<b>58.2</b>	<b>61.8</b>	<b>68</b>	<b>72.3%</b>	<b>76</b>	<b>80.9%</b>
<i>Southern Region</i>								
	3rd	2	0.6	0.5	2	100.0%	2	100.0%
	4th	51	46.8	44.6	51	100.0%	54	105.9%
	10th	13	12.1	12.2	15	115.4%	19	146.2%
	11th	8	1.7	2.1	2	25.0%	6	75.0%
	12th	4	3.0	2.3	4	100.0%	4	100.0%
	15th	2	2.3	1.5	3	150.0%	3	150.0%
	16th	3	1.2	1.1	4	133.3%	4	133.3%
<b>Southern Region</b>		<b>83</b>	<b>67.6</b>	<b>64.4</b>	<b>75</b>	<b>90.4%</b>	<b>78</b>	<b>94.0%</b>
<i>Western Region</i>								
	6th	5	1.4	4.0	3	60.0%	7	140.0%
	7th	7	5.1	3.2	7	100.0%	7	100.0%
	9th	6	4.9	2.9	8	133.3%	8	133.3%
	14th	3	0.9	0.7	2	66.7%	3	100.0%
	21st	14	12.3	14.5	16	114.3%	19	135.7%
	22nd	4	5.4	3.3	6	150.0%	6	150.0%
<b>Western Region</b>		<b>39</b>	<b>30.0</b>	<b>28.5</b>	<b>37</b>	<b>94.9%</b>	<b>37</b>	<b>94.9%</b>
<i>Missing JD or Multiple JDs</i>			0.7	1.8				
<b>Statewide</b>		<b>382</b>	<b>268.8</b>	<b>266.9</b>	<b>298</b>	<b>78.0%</b>	<b>301</b>	<b>78.8%</b>

<sup>1</sup> Maximum youth served is the highest number of youth in detention on a single day during the month or fiscal year.

<sup>2</sup> Regional figures are not the sum of judicial districts, but represent the maximum count on one day for the entire region.

<sup>3</sup> State figures are not the sum of regional figures, but represent the maximum count on one day for the entire state.

## November 2017 SB94 Supplemental Report

### SB94 Community ADP by Judicial District

Region	JD	Committed		Diversion		ICJ		Municipal		Pre-Adjudicated		Sentenced		VCO		Total	
		November	YTD	November	YTD	November	YTD	November	YTD	November	YTD	November	YTD	November	YTD	November	YTD
<i>Central Region</i>																	
	1st	0.0	0.0	0.0	0.0	0.0	0.0	9.6	7.0	266.5	235.2	24.4	25.5	0.0	0.0	300.5	267.6
	2nd	0.5	0.1	0.0	0.0	0.6	0.1	1.0	1.0	147.4	130.6	29.4	27.8	0.0	0.0	179.0	159.7
	5th	0.0	0.0	15.0	13.4	0.0	0.0	0.0	0.0	17.2	14.0	29.6	29.7	0.0	0.0	61.8	57.1
	18th	0.3	1.2	1.0	0.7	0.0	0.0	0.0	0.0	295.5	249.8	27.0	24.8	1.0	1.0	324.8	277.5
<b>Central Total</b>		<b>0.8</b>	<b>1.3</b>	<b>16.0</b>	<b>14.2</b>	<b>0.6</b>	<b>0.1</b>	<b>10.6</b>	<b>8.0</b>	<b>726.7</b>	<b>629.5</b>	<b>110.3</b>	<b>107.8</b>	<b>1.0</b>	<b>1.0</b>	<b>866.0</b>	<b>762.0</b>
<i>Northeast Region</i>																	
	8th	0.0	0.0	1.0	1.0	0.0	0.0	0.0	0.0	71.9	60.6	67.2	61.5	0.0	0.0	140.1	123.0
	13th	0.0	0.0	0.0	0.0	0.0	0.0	0.0	0.0	13.5	13.2	2.3	2.8	5.4	5.3	21.1	21.3
	17th	2.8	2.0	0.0	0.0	0.0	0.0	1.0	1.0	182.0	164.3	66.1	66.4	0.0	0.0	251.9	233.7
	19th	1.5	0.6	0.0	0.0	0.0	0.0	0.0	0.0	61.4	57.7	51.1	38.0	1.9	1.2	116.0	97.5
	20th	1.0	0.7	10.0	7.2	0.0	0.0	0.0	0.0	85.1	56.7	24.4	14.9	12.8	5.8	133.3	85.3
<b>Northeast Total</b>		<b>5.3</b>	<b>3.3</b>	<b>11.0</b>	<b>8.2</b>	<b>0.0</b>	<b>0.0</b>	<b>1.0</b>	<b>1.0</b>	<b>413.9</b>	<b>352.5</b>	<b>211.1</b>	<b>183.5</b>	<b>20.1</b>	<b>12.3</b>	<b>662.4</b>	<b>560.8</b>
<i>Southern Region</i>																	
	3rd	0.0	0.0	0.0	0.0	0.0	0.0	0.0	0.0	11.3	10.3	4.2	6.3	0.0	0.0	15.5	16.7
	4th	0.0	1.8	0.0	0.0	0.0	0.0	129.1	115.3	113.3	99.4	42.0	43.8	0.0	0.0	284.4	260.3
	10th	2.8	2.3	0.0	0.0	1.0	1.0	2.7	2.2	20.3	15.0	23.1	24.1	2.0	2.0	51.8	46.7
	11th	1.0	1.0	1.0	0.9	0.0	0.0	11.8	9.7	18.5	12.9	20.1	15.7	1.0	1.0	53.4	41.2
	12th	0.0	0.0	6.0	3.9	0.0	0.0	3.0	2.2	11.0	10.1	3.0	1.7	0.0	0.0	23.0	18.0
	15th	0.0	0.0	1.0	0.6	0.0	0.0	0.0	0.0	3.9	4.6	11.6	7.0	0.0	0.0	16.5	12.1
	16th	0.0	0.0	0.0	0.0	0.0	0.0	0.0	0.0	15.0	9.6	7.0	7.9	15.0	15.6	37.0	33.1
<b>Southern Total</b>		<b>3.8</b>	<b>5.1</b>	<b>8.0</b>	<b>5.4</b>	<b>1.0</b>	<b>1.0</b>	<b>146.6</b>	<b>129.5</b>	<b>193.3</b>	<b>162.0</b>	<b>110.9</b>	<b>106.5</b>	<b>18.0</b>	<b>18.6</b>	<b>481.7</b>	<b>428.1</b>
<i>Western Region</i>																	
	6th	0.0	0.0	0.0	0.0	0.0	0.0	0.0	0.0	11.0	11.7	1.0	1.0	0.0	0.0	12.0	12.7
	7th	0.0	0.0	8.0	5.6	0.0	0.0	0.0	0.0	20.9	17.7	20.5	20.9	0.0	0.0	49.4	44.2
	9th	0.0	0.0	0.0	0.0	0.0	0.0	0.0	0.0	14.9	11.6	1.5	0.4	0.0	0.0	16.4	12.0
	14th	0.0	0.0	5.5	7.2	0.0	0.0	0.0	0.0	4.0	3.9	0.0	0.2	0.0	0.0	9.5	11.3
	21st	0.0	0.0	0.0	0.0	0.0	0.0	0.0	0.0	45.3	40.2	14.7	16.2	0.0	0.0	60.0	56.4
	22nd	0.0	0.0	0.0	0.0	0.0	0.0	0.0	0.0	5.9	7.0	5.0	4.2	0.0	0.0	10.9	11.2
<b>Western Total</b>		<b>0.0</b>	<b>0.0</b>	<b>13.5</b>	<b>12.8</b>	<b>0.0</b>	<b>0.0</b>	<b>0.0</b>	<b>0.0</b>	<b>102.0</b>	<b>92.0</b>	<b>42.7</b>	<b>42.9</b>	<b>0.0</b>	<b>0.0</b>	<b>158.2</b>	<b>147.7</b>
<b>Statewide Total</b>		<b>9.9</b>	<b>9.8</b>	<b>48.5</b>	<b>40.6</b>	<b>1.6</b>	<b>1.1</b>	<b>158.2</b>	<b>138.4</b>	<b>1436.0</b>	<b>1235.9</b>	<b>475.0</b>	<b>440.8</b>	<b>39.1</b>	<b>31.9</b>	<b>2168.3</b>	<b>1898.5</b>