

October 2017 FY 2017-2018 SB94 JDSAG SUPPLEMENTAL REPORT

Prepared by the Division of Youth Services (DYS)
Data Management and Analysis
November 20, 2017



COLORADO

**Office of Children,
Youth & Families**

Division of Youth Services

October 2017 SB94 Supplemental Report

DYS Commitment ADP & New Commitments by Judicial District

Region	JD ¹	2018 Population Estimates ²	ADP ³		New Commitments		
			October 2017	YTD	October 2017	YTD	YTD Rate ⁴
<i>Central Region</i>							
	1st	56,139	76.9	76.0	7	13	2.3
	2nd	65,275	95.7	96.5	5	19	2.9
	5th	10,694	7.3	8.5	0	0	0.0
	18th	122,766	75.3	73.9	2	19	1.5
Central Total		254,874	255.2	254.8	14	51	2.0
<i>Northeast Region</i>							
	8th	34,025	38.3	39.7	4	9	2.6
	13th	8,531	8.0	7.8	0	1	1.2
	17th	73,588	62.7	66.0	4	9	1.2
	19th	37,441	57.6	57.4	1	7	1.9
	20th	33,056	8.8	10.2	1	1	0.3
Northeast Total		186,641	175.3	181.1	10	27	1.4
<i>Southern Region</i>							
	3rd	1,785	1.0	1.0	0	0	0.0
	4th	83,158	99.4	90.7	10	34	4.1
	10th	18,165	33.1	34.8	0	3	1.7
	11th	7,111	5.0	6.1	0	0	0.0
	12th	5,276	7.0	6.5	0	0	0.0
	15th	2,117	6.0	5.3	0	3	14.2
	16th	2,827	0.0	0.0	0	0	0.0
Southern Total		120,439	151.5	144.2	10	40	3.3
<i>Western Region</i>							
	6th	6,710	9.9	9.0	1	4	6.0
	7th	10,675	8.8	9.7	0	2	1.9
	9th	9,607	5.0	5.7	0	0	0.0
	14th	5,587	2.0	2.0	0	1	1.8
	21st	16,016	33.6	35.1	4	9	5.6
	22nd	3,144	5.0	4.5	0	1	3.2
Western Total		51,739	64.3	66.0	5	17	3.3
Statewide Total		613,693	646.4	646.2	39	135	2.2

¹ JD represents the judicial district in which the client was committed. Regional totals are a sum of their respective judicial districts. Regional totals reported here may differ slightly from those reported in the Monthly Population Report, where region is defined by active caseloads.

² Source: DOLA 2018 Estimates.

³ Due to rounding, totals shown may not be an exact sum of the subtotals.

⁴ Per 10,000 youth in the population.

October 2017 SB94 Supplemental Report

DYS Detention ADP and New Detention Admissions by Judicial District

Region	JD	2018 Population Estimates ¹	ADP		New Admits		
			October 2017	YTD	October 2017	YTD	YTD New Admit Rate ²
<i>Central Region</i>							
	1st	56,139	30.3	31.8	55	226	40.3
	2nd	65,275	44.2	39.4	76	287	44.0
	5th	10,694	0.6	0.9	3	14	13.1
	18th	122,766	44.8	38.8	91	351	28.6
Central Total		254,874	120.0	110.8	225	878	34.4
<i>Northeast Region</i>							
	8th	34,025	12.9	12.5	29	93	27.3
	13th	8,531	5.1	4.8	6	22	25.8
	17th	73,588	24.7	23.2	45	178	24.2
	19th	37,441	15.7	16.2	43	160	42.7
	20th	33,056	8.0	6.3	14	42	12.7
Northeast Total		186,641	66.5	63.1	137	495	26.5
<i>Southern Region</i>							
	3rd	1,785	0.4	0.5	0	13	72.8
	4th	83,158	44.7	44.1	70	248	29.8
	10th	18,165	13.7	12.2	24	94	51.7
	11th	7,111	1.3	2.2	6	33	46.4
	12th	5,276	1.1	2.1	4	13	24.6
	15th	2,117	2.3	1.3	1	8	37.8
	16th	2,827	2.6	1.1	5	14	49.5
Southern Total		120,439	66.0	63.6	110	423	35.1
<i>Western Region</i>							
	6th	6,710	3.3	4.6	3	22	32.8
	7th	10,675	3.0	2.7	3	16	15.0
	9th	9,607	2.9	2.4	5	19	19.8
	14th	5,587	0.0	0.6	0	6	10.7
	21st	16,016	14.0	15.0	23	84	52.4
	22nd	3,144	2.6	2.8	8	14	44.5
Western Total		51,739	25.7	28.2	42	161	31.1
<i>Missing JD or Multiple JDs</i>			1.2	2.1			
Statewide Total		613,693	279.3	267.8	514	1,957	31.9

¹ Source: DOLA 2018 Estimates.

² Per 10,000 youth in the population.

October 2017 SB94 Supplemental Report

DYS Detention LOS by Judicial District				
Region	JD	YTD Detention Releases	YTD LOS (days)	LOS (days) Compared to State AVG
<i>Central Region</i>				
	1st	227	15.2	-1.3
	2nd	295	14.7	-1.7
	5th	12	7.0	-9.5
	18th	349	13.8	-2.7
Central Total		883	14.3	-2.1
<i>Northeast Region</i>				
	8th	96	18.8	2.4
	13th	22	17.9	1.4
	17th	179	16.7	0.2
	19th	158	11.7	-4.8
	20th	45	21.0	4.6
Northeast Total		500	15.9	-0.5
<i>Southern Region</i>				
	3rd	14	4.4	-12.0
	4th	243	21.7	5.3
	10th	93	14.7	-1.7
	11th	33	7.7	-8.8
	12th	12	21.5	5.0
	15th	6	22.2	5.8
	16th	13	8.8	-7.6
Southern Total		414	18.0	1.6
<i>Western Region</i>				
	6th	25	23.2	6.7
	7th	14	19.5	3.0
	9th	20	14.2	-2.3
	14th	5	6.9	-9.6
	21st	77	15.1	-1.4
	22nd	11	28.9	12.5
Western Total		152	17.4	1.0
Statewide Total		1,948	16.5	-

October 2017 SB94 JDSAG Supplemental Report

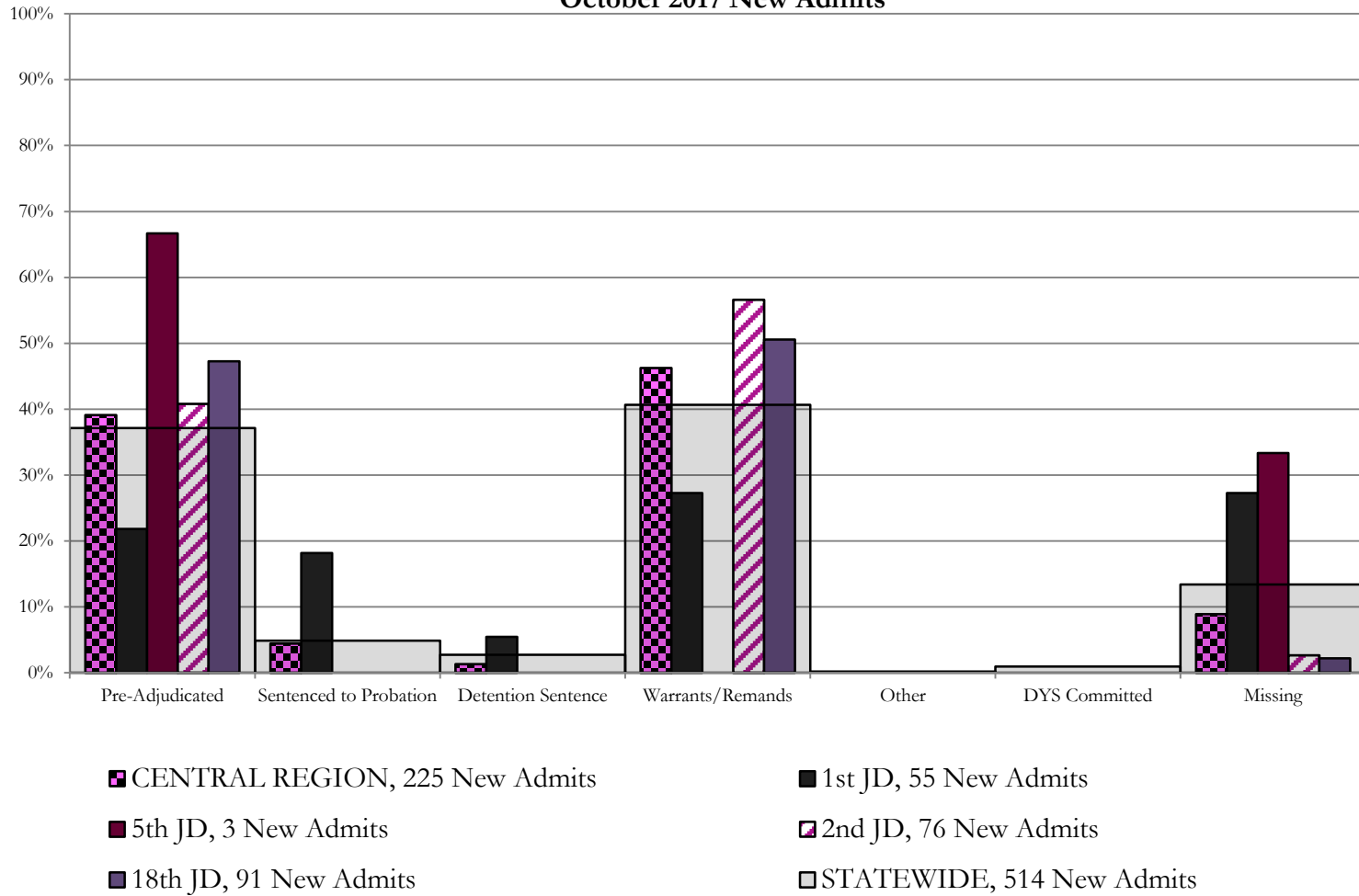
SB94 Reason Detained (RD) by Judicial District

Region	JD	Monthly New Admits	Pre-Adjudicated		Sentenced to Probation		Detention Sentence				Warrants/Remands		Other						DYS Committed		Missing															
			Felony	Misdemeanor	Technical Violator	New Charges	Probation Sentence	Detention Sentence	Valid Court Order (VCO) Truancy	Awaiting DSS (Social Services) Placement	Failure to Appear (FTA)	Failure to Comply (FTC)	Interstate Compact on Juveniles (ICJ) Hold	Immigration Hold	No Bond Hold	Out-of-Country Warrant	Institutional	Parole	Missing																	
			#	%	#	%	#	%	#	%	#	%	#	%	#	%	#	%	#	%	#	%	#	%	#	%	#	%	#	%						
Central Region																																				
	1st	55	6	10.9%	6	10.9%	9	16.4%	1	1.8%	0	0.0%	3	5.5%	0	0.0%	0	0.0%	6	10.9%	9	16.4%	0	0.0%	0	0.0%	0	0.0%	0	0.0%	0	0.0%	0	0.0%	15	27.3%
	2nd	76	26	34.2%	5	6.6%	0	0.0%	0	0.0%	0	0.0%	0	0.0%	0	0.0%	0	0.0%	11	14.5%	32	42.1%	0	0.0%	0	0.0%	0	0.0%	0	0.0%	0	0.0%	0	0.0%	2	2.6%
	5th	3	0	0.0%	2	66.7%	0	0.0%	0	0.0%	0	0.0%	0	0.0%	0	0.0%	0	0.0%	0	0.0%	0	0.0%	0	0.0%	0	0.0%	0	0.0%	0	0.0%	0	0.0%	1	33.3%		
	18th	91	24	26.4%	19	20.9%	0	0.0%	0	0.0%	0	0.0%	0	0.0%	0	0.0%	0	0.0%	9	9.9%	37	40.7%	0	0.0%	0	0.0%	0	0.0%	0	0.0%	0	0.0%	0	0.0%	2	2.2%
Central Total		225	56	25%	32	14%	9	4.0%	1	0.4%	0	0.0%	3	1.3%	0	0.0%	0	0.0%	26	12%	78	35%	0	0.0%	0	0.0%	0	0.0%	0	0.0%	0	0.0%	0	0.0%	20	8.9%
Northeast Region																																				
	8th	29	3	10.3%	7	24.1%	0	0.0%	0	0.0%	0	0.0%	1	3.4%	0	0.0%	0	0.0%	1	3.4%	10	34.5%	0	0.0%	0	0.0%	0	0.0%	0	0.0%	0	0.0%	0	0.0%	7	24.1%
	13th	6	1	16.7%	0	0.0%	0	0.0%	0	0.0%	0	0.0%	0	0.0%	1	16.7%	0	0.0%	0	0.0%	2	33.3%	0	0.0%	0	0.0%	0	0.0%	0	0.0%	0	0.0%	0	0.0%	2	33.3%
	17th	45	13	28.9%	0	0.0%	0	0.0%	0	0.0%	0	0.0%	0	0.0%	0	0.0%	0	0.0%	5	11.1%	11	24.4%	0	0.0%	0	0.0%	0	0.0%	0	0.0%	0	0.0%	0	0.0%	16	35.6%
	19th	43	13	30.2%	5	11.6%	11	25.6%	0	0.0%	0	0.0%	0	0.0%	0	0.0%	0	0.0%	2	4.7%	11	25.6%	0	0.0%	0	0.0%	0	0.0%	0	0.0%	0	0.0%	0	0.0%	1	2.3%
	20th	14	2	14.3%	0	0.0%	1	7.1%	0	0.0%	0	0.0%	4	28.6%	0	0.0%	3	21.4%	1	7.1%	0	0.0%	0	0.0%	0	0.0%	0	0.0%	0	0.0%	0	0.0%	3	21.4%		
Northeast Total		137	32	23%	12	9%	12	8.8%	0	0.0%	0	0.0%	5	3.6%	1	0.7%	3	2.2%	9	6.6%	34	25%	0	0.0%	0	0.0%	0	0.0%	0	0.0%	0	0.0%	0	0.0%	29	21%
Southern Region																																				
	3rd	0	0	0.0%	0	0.0%	0	0.0%	0	0.0%	0	0.0%	0	0.0%	0	0.0%	0	0.0%	0	0.0%	0	0.0%	0	0.0%	0	0.0%	0	0.0%	0	0.0%	0	0.0%	0	0.0%	0	0.0%
	4th	70	33	47.1%	1	1.4%	1	1.4%	1	1.4%	0	0.0%	0	0.0%	0	0.0%	0	0.0%	6	8.6%	20	28.6%	1	1.4%	0	0.0%	0	0.0%	4	5.7%	1	1.4%	2	2.9%		
	10th	24	6	25.0%	2	8.3%	0	0.0%	0	0.0%	0	0.0%	0	0.0%	0	0.0%	0	0.0%	2	8.3%	11	45.8%	0	0.0%	0	0.0%	0	0.0%	0	0.0%	0	0.0%	0	0.0%	3	12.5%
	11th	6	0	0.0%	0	0.0%	0	0.0%	0	0.0%	0	0.0%	0	0.0%	0	0.0%	0	0.0%	1	16.7%	2	33.3%	0	0.0%	0	0.0%	0	0.0%	0	0.0%	0	0.0%	0	0.0%	3	50.0%
	12th	4	3	75.0%	0	0.0%	0	0.0%	0	0.0%	0	0.0%	0	0.0%	0	0.0%	0	0.0%	0	0.0%	1	25.0%	0	0.0%	0	0.0%	0	0.0%	0	0.0%	0	0.0%	0	0.0%	0	0.0%
	15th	1	0	0.0%	0	0.0%	0	0.0%	0	0.0%	0	0.0%	0	0.0%	0	0.0%	0	0.0%	0	0.0%	1	100.0%	0	0.0%	0	0.0%	0	0.0%	0	0.0%	0	0.0%	0	0.0%	0	0.0%
	16th	5	4	80.0%	0	0.0%	0	0.0%	0	0.0%	0	0.0%	0	0.0%	0	0.0%	0	0.0%	0	0.0%	0	0.0%	0	0.0%	0	0.0%	0	0.0%	0	0.0%	0	0.0%	1	20.0%		
Southern Total		110	46	42%	3	3%	1	0.9%	1	0.9%	0	0.0%	0	0.0%	0	0.0%	0	0.0%	9	8%	35	32%	1	0.9%	0	0.0%	0	0.0%	0	0.0%	4	3.6%	1	0.9%	9	8%
Western Region																																				
	6th	3	0	0.0%	0	0.0%	0	0.0%	0	0.0%	0	0.0%	0	0.0%	0	0.0%	0	0.0%	0	0.0%	2	66.7%	0	0.0%	0	0.0%	0	0.0%	0	0.0%	0	0.0%	0	0.0%	1	33.3%
	7th	3	0	0.0%	0	0.0%	0	0.0%	0	0.0%	0	0.0%	0	0.0%	0	0.0%	0	0.0%	1	33.3%	2	66.7%	0	0.0%	0	0.0%	0	0.0%	0	0.0%	0	0.0%	0	0.0%	0	0.0%
	9th	5	0	0.0%	0	0.0%	1	20.0%	0	0.0%	0	0.0%	0	0.0%	0	0.0%	0	0.0%	0	0.0%	1	20.0%	0	0.0%	0	0.0%	0	0.0%	0	0.0%	0	0.0%	0	0.0%	3	60.0%
	14th	0	0	0.0%	0	0.0%	0	0.0%	0	0.0%	0	0.0%	0	0.0%	0	0.0%	0	0.0%	0	0.0%	0	0.0%	0	0.0%	0	0.0%	0	0.0%	0	0.0%	0	0.0%	0	0.0%	0	0.0%
	21st	23	5	21.7%	4	17.4%	0	0.0%	0	0.0%	0	0.0%	2	8.7%	0	0.0%	0	0.0%	3	13.0%	9	39.1%	0	0.0%	0	0.0%	0	0.0%	0	0.0%	0	0.0%	0	0.0%	0	0.0%
	22nd	8	0	0.0%	1	12.5%	0	0.0%	0	0.0%	0	0.0%	0	0.0%	0	0.0%	0	0.0%	0	0.0%	0	0.0%	0	0.0%	0	0.0%	0	0.0%	0	0.0%	0	0.0%	7	87.5%		
Western Total		42	5	12%	5	11.9%	1	2.4%	0	0.0%	0	0.0%	2	4.8%	0	0.0%	0	0.0%	4	9.5%	14	33%	0	0.0%	0	0.0%	0	0.0%	0	0.0%	0	0.0%	0	0.0%	11	26%
Individual RD Totals		514	139	27%	52	10%	23	4.5%	2	0.4%	0	0.0%	10	1.9%	1	0.2%	3	0.6%	48	9%	161	31%	1	0.2%	0	0.0%	0	0.0%	0	0.0%	4	0.8%	1	0.2%	69	13%
Statewide Totals		514	191	37.2%	25	4.9%	14	2.7%	0	0.0%	0	0.0%	10	1.9%	1	0.2%	3	0.6%	48	9.3%	161	31.3%	1	0.2%	0	0.0%	0	0.0%	4	0.8%	1	0.2%	69	13.4%		

Central Region

SB94 Reason Detained by Judicial District

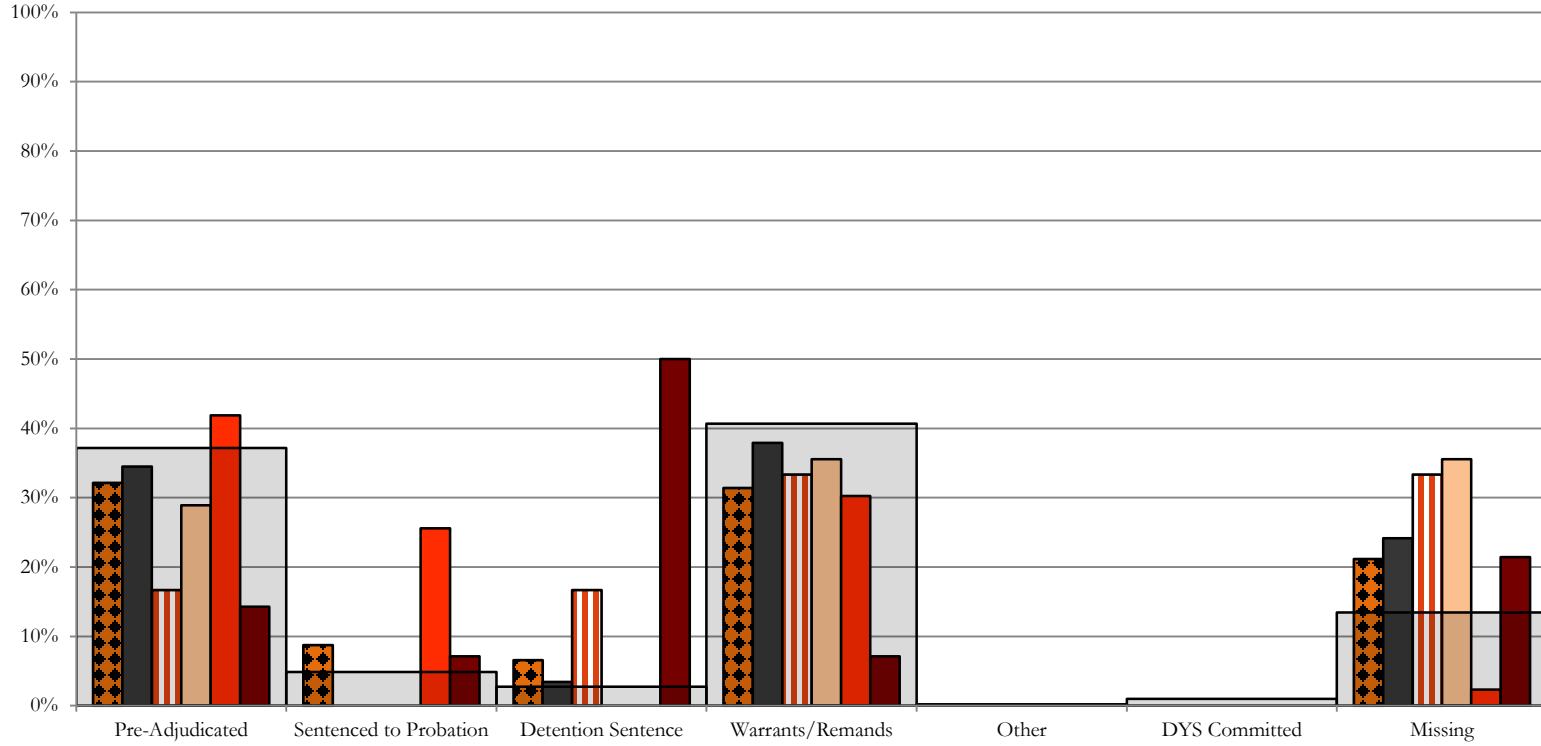
October 2017 New Admits



Northeast Region

SB94 Reason Detained by Judicial District

October 2017 New Admits



■ NORTHEAST REGION, 137 New Admits

■ 8th JD, 29 New Admits

■ 13th JD, 6 New Admits

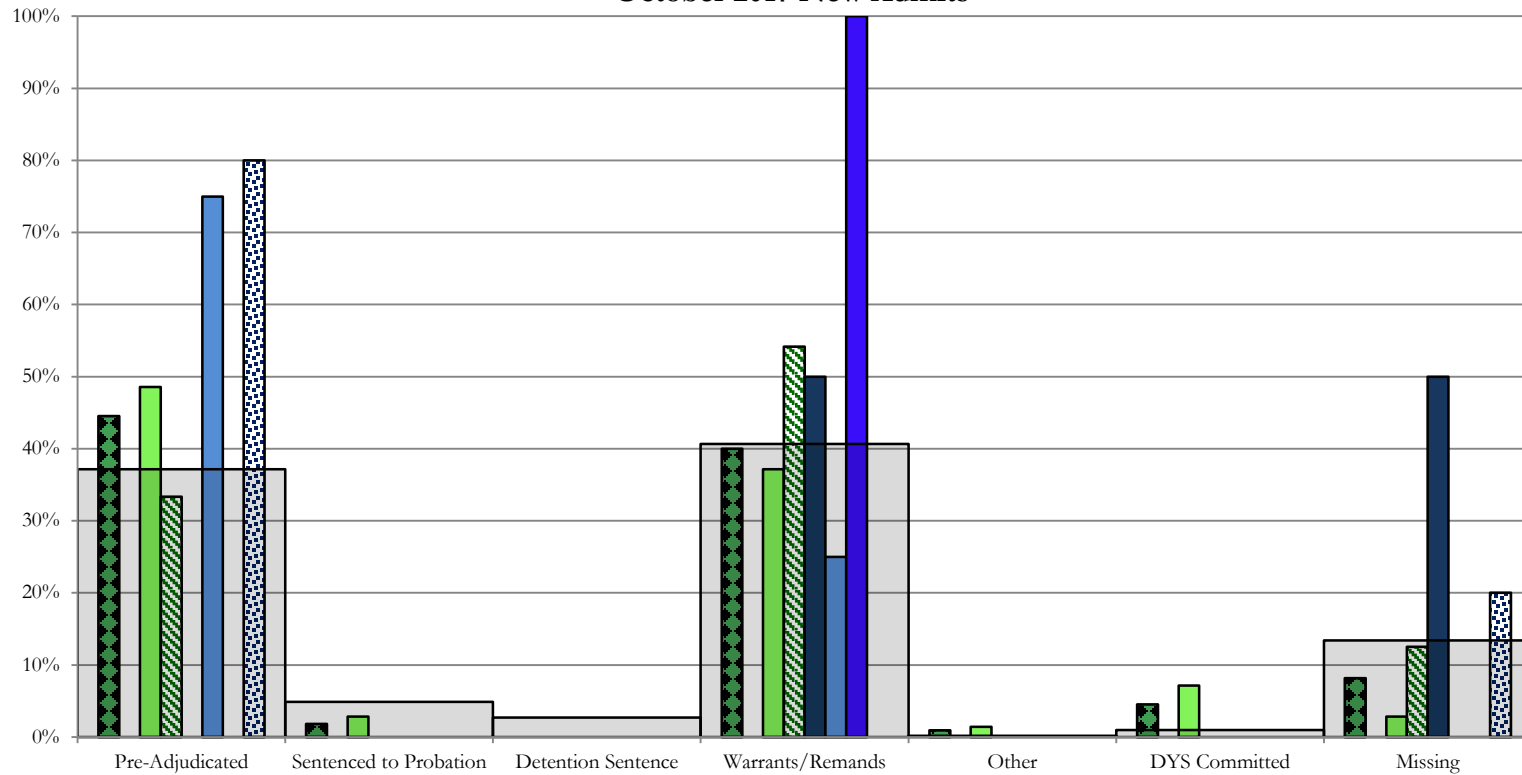
■ 17th JD, 45 New Admits

■ 19th JD, 43 New Admits

■ 20th JD, 14 New Admits

■ STATEWIDE, 514 New Admits

Southern Region SB94 Reason Detained by Judicial District October 2017 New Admits



■ SOUTHERN REGION, 110 New Admits

■ 4th JD, 70 New Admits

■ 11th JD, 6 New Admits

■ 15th JD, 1 New Admits

□ STATEWIDE, 514 New Admits

■ 3rd JD, 0 New Admits

■ 10th JD, 24 New Admits

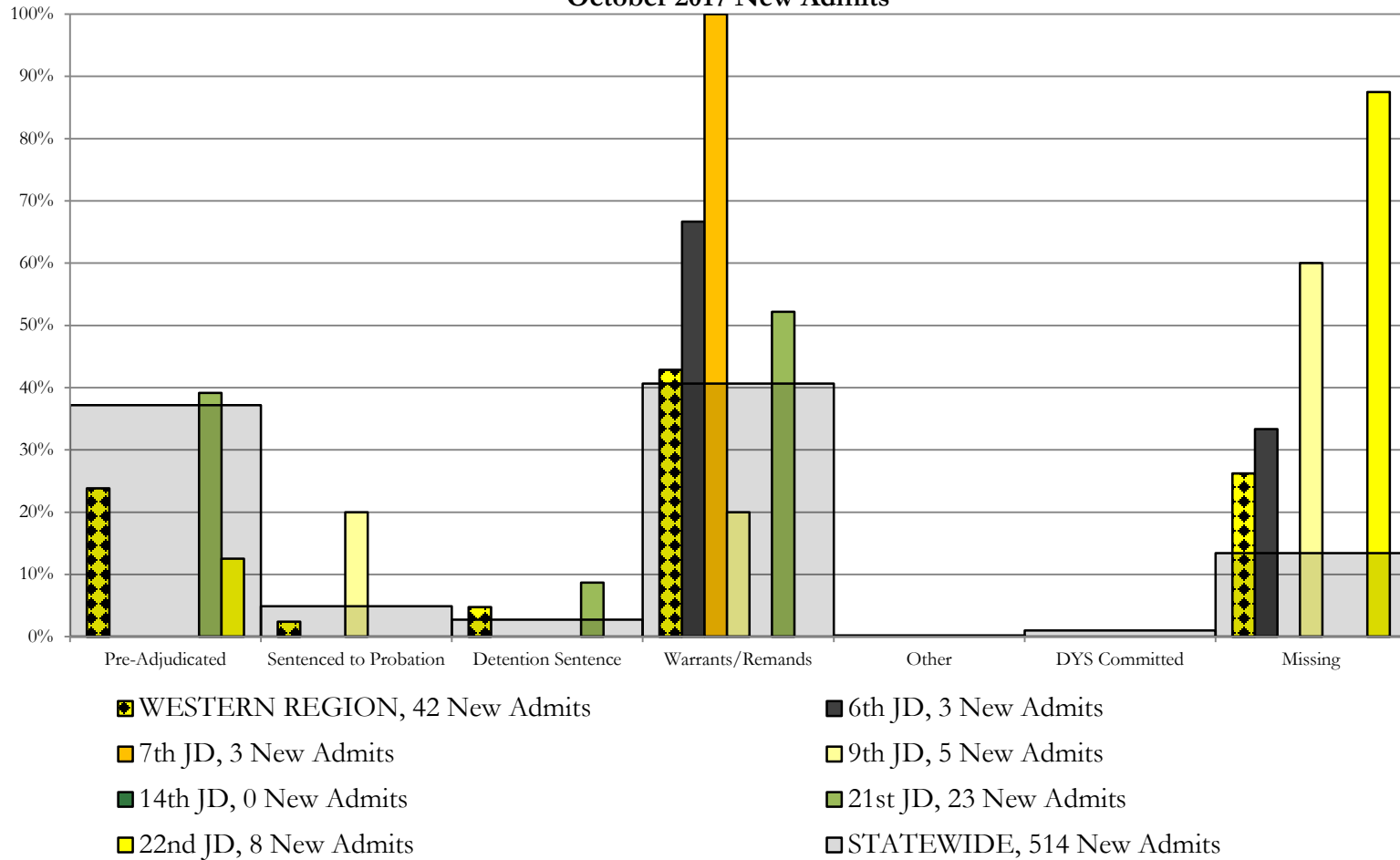
■ 12th JD, 4 New Admits

■ 16th JD, 5 New Admits

Western Region

SB94 Reason Detained by Judicial District

October 2017 New Admits



October 2017 SB94 Supplemental Report

DYS Detention Maximum Youth Served by Judicial District¹

Region	JD	Detention Capacity	Detention ADP		Maximum Youth Served on a Single Day ^{2,3}			
			October 2017	YTD	October 2017		YTD	
					Number of Youth	% of Detention Capacity	Number of Youth	% of Detention Capacity
<i>Central Region</i>								
	1st	37	30.3	31.8	38	102.7%	40	108.1%
	2nd	64	44.2	39.4	53	82.8%	54	84.4%
	5th	4	0.6	0.9	2	50.0%	4	100.0%
	18th	61	44.8	38.8	54	88.5%	54	88.5%
Central Region		166	120.0	110.8	136	81.9%	136	81.9%
<i>Northeast Region</i>								
	8th	21	12.9	12.5	18	85.7%	18	85.7%
	13th	5	5.1	4.8	7	140.0%	7	140.0%
	17th	30	24.7	23.2	30	100.0%	30	100.0%
	19th	25	15.7	16.2	21	84.0%	26	104.0%
	20th	13	8.0	6.3	11	84.6%	11	84.6%
Northeast Region		94	66.5	63.1	74	78.7%	75	79.8%
<i>Southern Region</i>								
	3rd	2	0.4	0.5	1	50.0%	2	100.0%
	4th	51	44.7	44.1	54	105.9%	54	105.9%
	10th	13	13.7	12.2	17	130.8%	19	146.2%
	11th	8	1.3	2.2	4	50.0%	6	75.0%
	12th	4	1.1	2.1	3	75.0%	4	100.0%
	15th	2	2.3	1.3	3	150.0%	3	150.0%
	16th	3	2.6	1.1	4	133.3%	4	133.3%
Southern Region		83	66.0	63.6	78	94.0%	78	94.0%
<i>Western Region</i>								
	6th	5	3.3	4.6	5	100.0%	7	140.0%
	7th	7	3.0	2.7	5	71.4%	6	85.7%
	9th	6	2.9	2.4	5	83.3%	5	83.3%
	14th	3	0.0	0.6	0	0.0%	3	100.0%
	21st	14	14.0	15.0	18	128.6%	19	135.7%
	22nd	4	2.6	2.8	5	125.0%	5	125.0%
Western Region		39	25.7	28.2	30	76.9%	35	89.7%
<i>Missing JD or Multiple JDs</i>			1.2	2.1				
Statewide		382	279.3	267.8	302	79.1%	302	79.1%

¹ Maximum youth served is the highest number of youth in detention on a single day during the month or fiscal year.

² Regional figures are not the sum of judicial districts, but represent the maximum count on one day for the entire region.

³ State figures are not the sum of regional figures, but represent the maximum count on one day for the entire state.

October 2017 SB94 Supplemental Report

SB94 Community ADP by Judicial District

Region	JD	Committed		Diversion		ICJ		Municipal		Pre-Adjudicated		Sentenced		VCO		Total	
		October	YTD	October	YTD	October	YTD	October	YTD	October	YTD	October	YTD	October	YTD	October	YTD
<i>Central Region</i>																	
	1st	0.0	0.0	0.0	0.0	0.0	0.0	10.6	6.3	251.0	229.9	28.0	26.8	0.0	0.0	289.6	263.0
	2nd	0.1	0.0	0.0	0.0	0.0	0.0	0.0	0.0	131.0	125.2	25.3	26.3	0.0	0.0	156.4	151.5
	5th	0.0	0.0	13.2	13.0	0.0	0.0	0.0	0.0	16.6	13.2	30.7	29.3	0.0	0.0	60.5	55.5
	18th	1.6	1.4	1.0	0.7	0.0	0.0	0.0	0.0	302.6	265.2	26.9	24.6	1.0	1.0	333.2	292.8
Central Total		1.8	1.5	14.2	13.7	0.0	0.0	10.6	6.3	701.2	633.5	111.0	106.9	1.0	1.0	839.7	762.9
<i>Northeast Region</i>																	
	8th	0.0	0.0	1.0	1.0	0.0	0.0	0.0	0.0	70.4	57.6	64.9	60.8	0.0	0.0	136.3	119.4
	13th	0.0	0.0	0.0	0.0	0.0	0.0	0.0	0.0	11.7	13.1	3.6	3.0	4.6	5.3	19.8	21.5
	17th	2.0	1.8	0.0	0.0	0.0	0.0	1.0	1.0	201.4	184.9	78.6	76.8	0.0	0.0	283.0	264.5
	19th	1.0	0.4	0.0	0.0	0.0	0.0	0.0	0.0	78.4	68.4	44.8	35.6	1.0	1.0	125.2	105.4
	20th	1.0	0.7	10.0	6.5	0.0	0.0	0.0	0.0	70.4	45.3	17.5	12.6	6.2	3.8	105.1	68.8
Northeast Total		4.0	2.9	11.0	7.5	0.0	0.0	1.0	1.0	432.2	369.3	209.4	188.8	11.8	10.2	669.4	579.6
<i>Southern Region</i>																	
	3rd	0.0	0.0	0.0	0.0	0.0	0.0	0.0	0.0	11.0	10.9	7.0	7.0	0.0	0.0	18.0	17.9
	4th	1.7	2.3	0.0	0.0	0.0	0.0	118.1	112.9	133.9	113.2	64.3	56.7	0.0	0.0	318.0	285.2
	10th	4.0	3.4	0.0	0.0	1.0	1.0	2.0	2.1	14.9	13.2	20.5	19.1	2.1	2.0	44.5	40.8
	11th	1.0	1.0	1.0	0.8	0.0	0.0	11.0	9.2	15.3	11.0	13.6	13.2	1.0	1.0	42.9	36.2
	12th	0.0	0.0	6.0	3.4	0.0	0.0	3.0	2.0	11.1	10.3	3.4	2.1	0.0	0.0	23.6	17.8
	15th	0.0	0.0	1.0	0.5	0.0	0.0	0.0	0.0	4.0	4.7	8.2	5.8	0.0	0.0	13.1	11.0
	16th	0.0	0.0	0.0	0.0	0.0	0.0	0.0	0.0	9.8	7.3	7.1	8.1	15.0	15.7	31.9	31.2
Southern Total		6.7	6.7	8.0	4.7	1.0	1.0	134.1	126.3	200.1	170.7	124.1	112.0	18.1	18.8	491.9	440.2
<i>Western Region</i>																	
	6th	0.0	0.0	0.0	0.0	0.0	0.0	0.0	0.0	12.7	11.8	1.1	1.0	0.0	0.0	13.8	12.9
	7th	0.0	0.0	9.0	5.4	0.0	0.0	0.0	0.0	20.0	17.0	26.6	25.0	0.0	0.0	55.6	47.4
	9th	0.0	0.0	0.0	0.0	0.0	0.0	0.0	0.0	11.4	10.4	0.2	0.1	0.0	0.0	11.6	10.6
	14th	0.0	0.0	9.0	9.0	0.0	0.0	0.0	0.0	4.0	4.0	0.0	0.2	0.0	0.0	13.0	13.2
	21st	0.0	0.0	0.0	0.0	0.0	0.0	0.0	0.0	42.8	38.5	13.6	16.1	0.0	0.0	56.4	54.6
	22nd	0.0	0.0	0.0	0.0	0.0	0.0	0.0	0.0	6.9	7.2	5.0	4.0	0.0	0.0	11.9	11.2
Western Total		0.0	0.0	18.0	14.4	0.0	0.0	0.0	0.0	97.8	89.0	46.5	46.5	0.0	0.0	162.3	149.9
Statewide Total		12.4	11.1	51.2	40.4	1.0	1.0	145.7	133.6	1431.3	1262.4	491.0	454.3	30.9	29.9	2163.5	1932.6