

September 2017 FY 2017-2018 SB94 JDSAG SUPPLEMENTAL REPORT

Prepared by the Division of Youth Services (DYS)
Data Management and Analysis
October 24, 2017



COLORADO

**Office of Children,
Youth & Families**

Division of Youth Services

September 2017 SB94 Supplemental Report

DYS Commitment ADP & New Commitments by Judicial District

Region	JD ¹	2018 Population Estimates ²	ADP ³		New Commitments		
			September 2017	YTD	September 2017	YTD	YTD Rate ⁴
<i>Central Region</i>							
	1st	56,139	74.7	76.0	2	6	1.1
	2nd	65,275	93.6	96.7	6	14	2.1
	5th	10,694	7.3	8.8	0	0	0.0
	18th	122,766	78.6	73.5	4	16	1.3
Central Total		254,874	254.2	255.0	12	36	1.4
<i>Northeast Region</i>							
	8th	34,025	36.8	40.3	3	5	1.5
	13th	8,531	8.0	7.8	0	1	1.2
	17th	73,588	63.1	66.9	1	5	0.7
	19th	37,441	56.8	57.3	2	6	1.6
	20th	33,056	8.6	10.7	0	0	0.0
Northeast Total		186,641	173.4	182.9	6	17	0.9
<i>Southern Region</i>							
	3rd	1,785	1.0	1.0	0	0	0.0
	4th	83,158	93.9	87.2	5	20	2.4
	10th	18,165	34.8	35.6	0	3	1.7
	11th	7,111	5.4	6.4	0	0	0.0
	12th	5,276	6.3	6.3	0	0	0.0
	15th	2,117	6.0	5.0	0	3	14.2
	16th	2,827	0.0	0.0	0	0	0.0
Southern Total		120,439	147.4	141.6	5	26	2.2
<i>Western Region</i>							
	6th	6,710	9.8	8.7	0	3	4.5
	7th	10,675	9.1	10.0	0	2	1.9
	9th	9,607	5.9	6.0	0	0	0.0
	14th	5,587	2.0	2.0	1	1	1.8
	21st	16,016	34.0	35.5	1	5	3.1
	22nd	3,144	5.0	4.3	0	1	3.2
Western Total		51,739	65.9	66.5	2	12	2.3
Statewide Total		613,693	640.8	646.0	25	91	1.5

¹ JD represents the judicial district in which the client was committed. Regional totals are a sum of their respective judicial districts. Regional totals reported here may differ slightly from those reported in the Monthly Population Report, where region is defined by active caseloads.

² Source: DOLA 2018 Estimates.

³ Due to rounding, totals shown may not be an exact sum of the subtotals.

⁴ Per 10,000 youth in the population.

September 2017 SB94 Supplemental Report

DYS Detention ADP and New Detention Admissions by Judicial District

Region	JD	2018 Population Estimates ¹	ADP		New Admits		
			September 2017	YTD	September 2017	YTD	YTD New Admit Rate ²
<i>Central Region</i>							
	1st	56,139	35.3	32.1	63	170	30.3
	2nd	65,275	37.5	37.8	75	211	32.3
	5th	10,694	1.7	1.2	4	12	11.2
	18th	122,766	40.5	36.8	81	260	21.2
Central Total		254,874	115.0	107.8	223	653	25.6
<i>Northeast Region</i>							
	8th	34,025	11.2	12.7	18	65	19.1
	13th	8,531	4.3	4.6	4	16	18.8
	17th	73,588	24.6	23.0	40	134	18.2
	19th	37,441	18.2	16.4	34	117	31.2
	20th	33,056	4.0	5.7	9	28	8.5
Northeast Total		186,641	62.4	62.4	105	360	19.3
<i>Southern Region</i>							
	3rd	1,785	0.5	0.6	2	13	72.8
	4th	83,158	44.0	44.2	61	178	21.4
	10th	18,165	12.0	11.6	19	70	38.5
	11th	7,111	1.6	2.5	9	27	38.0
	12th	5,276	1.4	2.5	2	9	17.1
	15th	2,117	1.6	1.0	3	7	33.1
	16th	2,827	1.5	0.6	6	9	31.8
Southern Total		120,439	62.7	63.0	102	313	26.0
<i>Western Region</i>							
	6th	6,710	4.4	5.1	6	19	28.3
	7th	10,675	3.0	2.6	3	13	12.2
	9th	9,607	2.2	2.2	7	14	14.6
	14th	5,587	1.1	0.8	1	6	10.7
	21st	16,016	16.0	15.4	27	61	38.1
	22nd	3,144	4.1	2.8	3	6	19.1
Western Total		51,739	30.7	29.0	47	119	23.0
<i>Missing JD or Multiple JDs</i>			2.1	2.4			
Statewide Total		613,693	272.9	264.5	477	1,445	23.5

¹ Source: DOLA 2018 Estimates.

² Per 10,000 youth in the population.

September 2017 SB94 Supplemental Report

DYS Detention LOS by Judicial District				
Region	JD	YTD Detention Releases	YTD LOS (days)	LOS (days) Compared to State AVG
<i>Central Region</i>				
	1st	167	11.7	-3.9
	2nd	208	14.6	-0.9
	5th	11	7.5	-8.0
	18th	257	14.4	-1.2
Central Total		643	13.6	-1.9
<i>Northeast Region</i>				
	8th	66	13.5	-2.0
	13th	16	8.8	-6.7
	17th	127	15.3	-0.2
	19th	120	12.6	-3.0
	20th	29	26.3	10.7
Northeast Total		358	14.7	-0.9
<i>Southern Region</i>				
	3rd	13	3.5	-12.0
	4th	173	21.0	5.4
	10th	71	14.6	-0.9
	11th	25	8.2	-7.4
	12th	10	25.3	9.8
	15th	5	24.5	9.0
	16th	6	1.2	-14.3
Southern Total		303	17.5	2.0
<i>Western Region</i>				
	6th	20	21.5	6.0
	7th	12	19.6	4.1
	9th	14	14.3	-1.3
	14th	5	6.9	-8.6
	21st	58	15.3	-0.2
	22nd	4	35.2	19.7
Western Total		113	17.1	1.5
Statewide Total		1,417	15.5	-

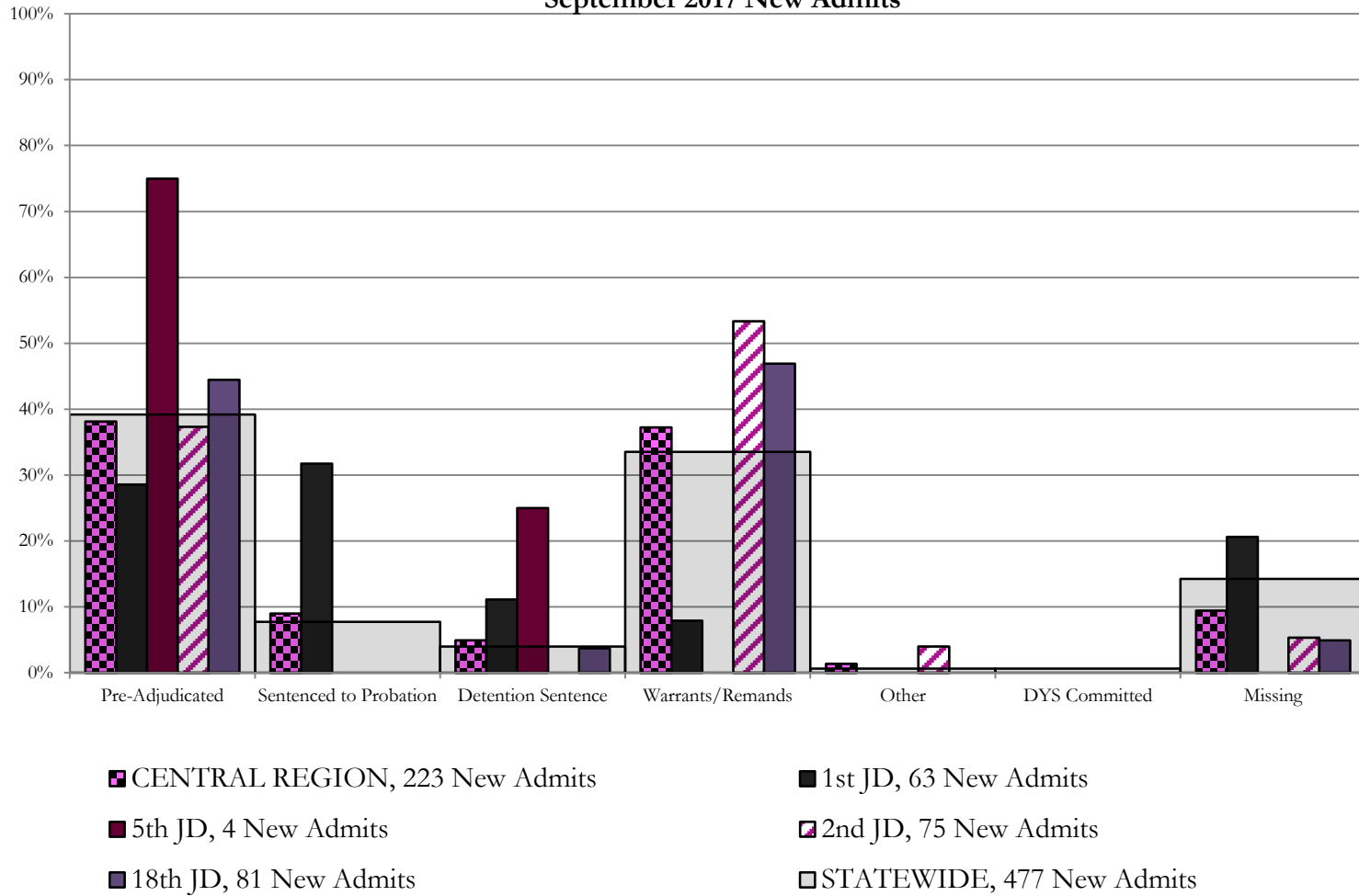
September 2017
SB94 JDSAG Supplemental Report

SB94 Reason Detained (RD) by Judicial District

Region	JD	Monthly New Admits	Pre-Adjudicated				Sentenced to Probation				Detention Sentence								Warrants/Remands				Other								DYS Committed				Missing			
			Felony		Misdemeanor		Technical Violator		New Charges		Probation Sentence		Detention Sentence		Valid Court Order (VCO) Truancy		Awaiting DSS (Social Services) Placement		Failure to Appear (FTA)		Failure to Comply (FTC)		Interstate Compact on Juveniles (ICJ) Hold		Immigration Hold		No Bond Hold		Out-of-Country Warrant		Institutional		Parole		Missing			
			#	%	#	%	#	%	#	%	#	%	#	%	#	%	#	%	#	%	#	%	#	%	#	%	#	%	#	%	#	%	#	%				
Central Region																																						
	1st	63	15	23.8%	3	4.8%	19	30.2%	1	1.6%	0	0.0%	7	11.1%	0	0.0%	0	0.0%	3	4.8%	2	3.2%	0	0.0%	0	0.0%	0	0.0%	0	0.0%	0	0.0%	0	0.0%	13	20.6%		
	2nd	75	25	33.3%	3	4.0%	0	0.0%	0	0.0%	0	0.0%	0	0.0%	0	0.0%	0	0.0%	7	9.3%	33	44.0%	3	4.0%	0	0.0%	0	0.0%	0	0.0%	0	0.0%	0	0.0%	4	5.3%		
	5th	4	3	75.0%	0	0.0%	0	0.0%	0	0.0%	0	0.0%	1	25.0%	0	0.0%	0	0.0%	0	0.0%	0	0.0%	0	0.0%	0	0.0%	0	0.0%	0	0.0%	0	0.0%	0	0.0%	0	0.0%		
	18th	81	19	23.5%	17	21.0%	0	0.0%	0	0.0%	0	0.0%	3	3.7%	0	0.0%	0	0.0%	7	8.6%	31	38.3%	0	0.0%	0	0.0%	0	0.0%	0	0.0%	0	0.0%	0	0.0%	4	4.9%		
Central Total		223	62	28%	23	10%	19	8.5%	1	0.4%	0	0.0%	11	4.9%	0	0.0%	0	0.0%	17	8%	66	30%	3	1.3%	0	0.0%	0	0.0%	0	0.0%	0	0.0%	0	0.0%	21	9.4%		
Northeast Region																																						
	8th	18	3	16.7%	4	22.2%	0	0.0%	0	0.0%	0	0.0%	0	0.0%	0	0.0%	0	0.0%	2	11.1%	8	44.4%	0	0.0%	0	0.0%	0	0.0%	0	0.0%	0	0.0%	0	0.0%	1	5.6%		
	13th	4	1	25.0%	0	0.0%	1	25.0%	0	0.0%	0	0.0%	0	0.0%	0	0.0%	0	0.0%	0	0.0%	1	25.0%	0	0.0%	0	0.0%	0	0.0%	0	0.0%	0	0.0%	0	0.0%	1	25.0%		
	17th	40	8	20.0%	1	2.5%	0	0.0%	0	0.0%	0	0.0%	0	0.0%	0	0.0%	0	0.0%	3	7.5%	13	32.5%	0	0.0%	0	0.0%	0	0.0%	0	0.0%	0	0.0%	0	0.0%	15	37.5%		
	19th	34	8	23.5%	9	26.5%	9	26.5%	0	0.0%	0	0.0%	1	2.9%	0	0.0%	1	2.9%	3	8.8%	3	8.8%	0	0.0%	0	0.0%	0	0.0%	0	0.0%	0	0.0%	0	0.0%	0	0.0%		
	20th	9	0	0.0%	0	0.0%	2	22.2%	0	0.0%	0	0.0%	0	0.0%	0	0.0%	1	11.1%	1	11.1%	1	11.1%	0	0.0%	0	0.0%	0	0.0%	0	0.0%	0	0.0%	0	0.0%	4	44.4%		
Northeast Total		105	20	19%	14	13%	12	11.4%	0	0.0%	0	0.0%	1	1.0%	0	0.0%	2	1.9%	9	8.6%	26	25%	0	0.0%	0	0.0%	0	0.0%	0	0.0%	0	0.0%	0	0.0%	21	20%		
Southern Region																																						
	3rd	2	1	50.0%	1	50.0%	0	0.0%	0	0.0%	0	0.0%	0	0.0%	0	0.0%	0	0.0%	0	0.0%	0	0.0%	0	0.0%	0	0.0%	0	0.0%	0	0.0%	0	0.0%	0	0.0%	0	0.0%		
	4th	61	27	44.3%	2	3.3%	0	0.0%	2	3.3%	0	0.0%	1	1.6%	2	3.3%	0	0.0%	11	18.0%	11	18.0%	0	0.0%	0	0.0%	0	0.0%	0	0.0%	3	4.9%	0	0.0%	2	3.3%		
	10th	19	3	15.8%	2	10.5%	0	0.0%	1	5.3%	0	0.0%	0	0.0%	0	0.0%	0	0.0%	3	15.8%	6	31.6%	0	0.0%	0	0.0%	0	0.0%	0	0.0%	0	0.0%	0	0.0%	4	21.1%		
	11th	9	2	22.2%	2	22.2%	0	0.0%	0	0.0%	0	0.0%	0	0.0%	0	0.0%	0	0.0%	0	0.0%	0	0.0%	0	0.0%	0	0.0%	0	0.0%	0	0.0%	0	0.0%	5	55.6%				
	12th	2	1	50.0%	1	50.0%	0	0.0%	0	0.0%	0	0.0%	0	0.0%	0	0.0%	0	0.0%	0	0.0%	0	0.0%	0	0.0%	0	0.0%	0	0.0%	0	0.0%	0	0.0%	0	0.0%	0	0.0%		
	15th	3	2	66.7%	0	0.0%	0	0.0%	0	0.0%	0	0.0%	0	0.0%	0	0.0%	0	0.0%	0	0.0%	0	0.0%	0	0.0%	0	0.0%	0	0.0%	0	0.0%	0	0.0%	1	33.3%				
	16th	6	1	16.7%	1	16.7%	0	0.0%	0	0.0%	0	0.0%	1	16.7%	0	0.0%	0	0.0%	0	0.0%	0	0.0%	0	0.0%	0	0.0%	0	0.0%	0	0.0%	0	0.0%	3	50.0%				
Southern Total		102	37	36%	9	9%	0	0.0%	3	2.9%	0	0.0%	2	2.0%	2	2.0%	0	0.0%	14	14%	17	17%	0	0.0%	0	0.0%	0	0.0%	0	0.0%	0	0.0%	3	2.9%	0	0.0%	15	15%
Western Region																																						
	6th	6	1	16.7%	0	0.0%	0	0.0%	0	0.0%	0	0.0%	0	0.0%	0	0.0%	0	0.0%	0	0.0%	0	0.0%	0	0.0%	0	0.0%	0	0.0%	0	0.0%	0	0.0%	5	83.3%				
	7th	3	0	0.0%	0	0.0%	1	33.3%	0	0.0%	0	0.0%	0	0.0%	0	0.0%	0	0.0%	1	33.3%	0	0.0%	0	0.0%	0	0.0%	0	0.0%	0	0.0%	0	0.0%	0	0.0%	1	33.3%		
	9th	7	4	57.1%	1	14.3%	1	14.3%	0	0.0%	0	0.0%	1	14.3%	0	0.0%	0	0.0%	0	0.0%	0	0.0%	0	0.0%	0	0.0%	0	0.0%	0	0.0%	0	0.0%	0	0.0%	0	0.0%		
	14th	1	0	0.0%	0	0.0%	0	0.0%	0	0.0%	0	0.0%	0	0.0%	0	0.0%	0	0.0%	0	0.0%	0	0.0%	0	0.0%	0	0.0%	0	0.0%	0	0.0%	0	0.0%	1	100.0%				
	21st	27	8	29.6%	8	29.6%	0	0.0%	0	0.0%	0	0.0%	0	0.0%	0	0.0%	0	0.0%	4	14.8%	5	18.5%	0	0.0%	0	0.0%	0	0.0%	0	0.0%	0	0.0%	0	0.0%	2	7.4%		
	22nd	3	0	0.0%	0	0.0%	0	0.0%	0	0.0%	0	0.0%	0	0.0%	0	0.0%	0	0.0%	1	33.3%	0	0.0%	0	0.0%	0	0.0%	0	0.0%	0	0.0%	0	0.0%	2	66.7%				
Western Total		47	13	28%	9	19.1%	2	4.3%	0	0.0%	0	0.0%	1	2.1%	0	0.0%	0	0.0%	6	12.8%	5	11%	0	0.0%	0	0.0%	0	0.0%	0	0.0%	0	0.0%	0	0.0%	11	23%		
Individual RD Totals		477	132	28%	55	12%	33	6.9%	4	0.8%	0	0.0%	15	3.1%	2	0.4%	2	0.4%	46	10%	114	24%	3	0.6%	0	0.0%	0	0.0%	0	0.0%	0	0.0%	3	0.6%	0	0.0%	68	14%
Statewide Totals		477	187	39.2%	37	7.8%	19	4.0%	0	0.0%	0	0.0%	15	3.1%	2	0.4%	2	0.4%	160	33.5%	3	0.6%	0	0.0%	0	0.0%	0	0.0%	3	0.6%	0	0.0%	68	14%				

Central Region

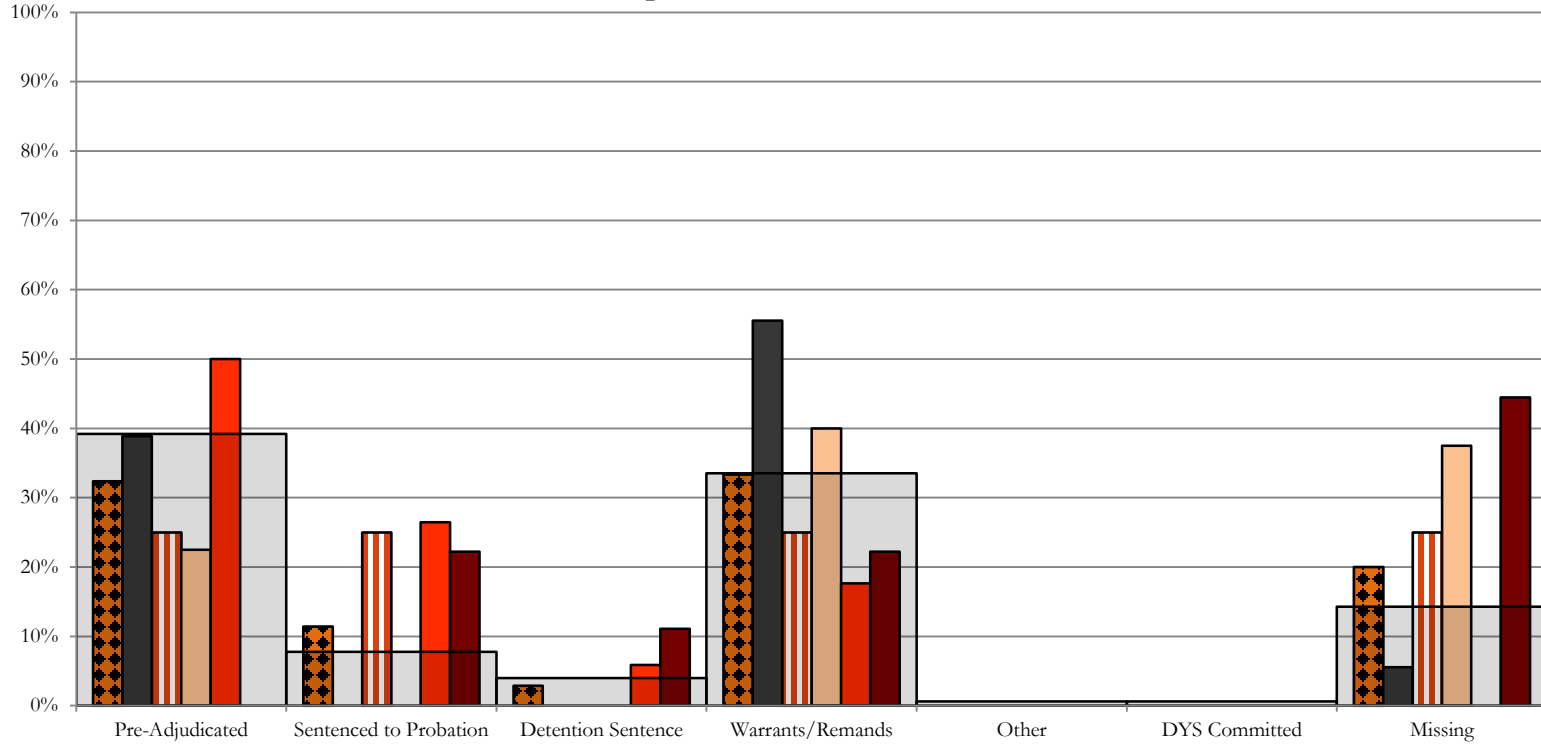
SB94 Reason Detained by Judicial District September 2017 New Admits



Northeast Region

SB94 Reason Detained by Judicial District

September 2017 New Admits



■ NORTHEAST REGION, 105 New Admits

■ 8th JD, 18 New Admits

■ 13th JD, 4 New Admits

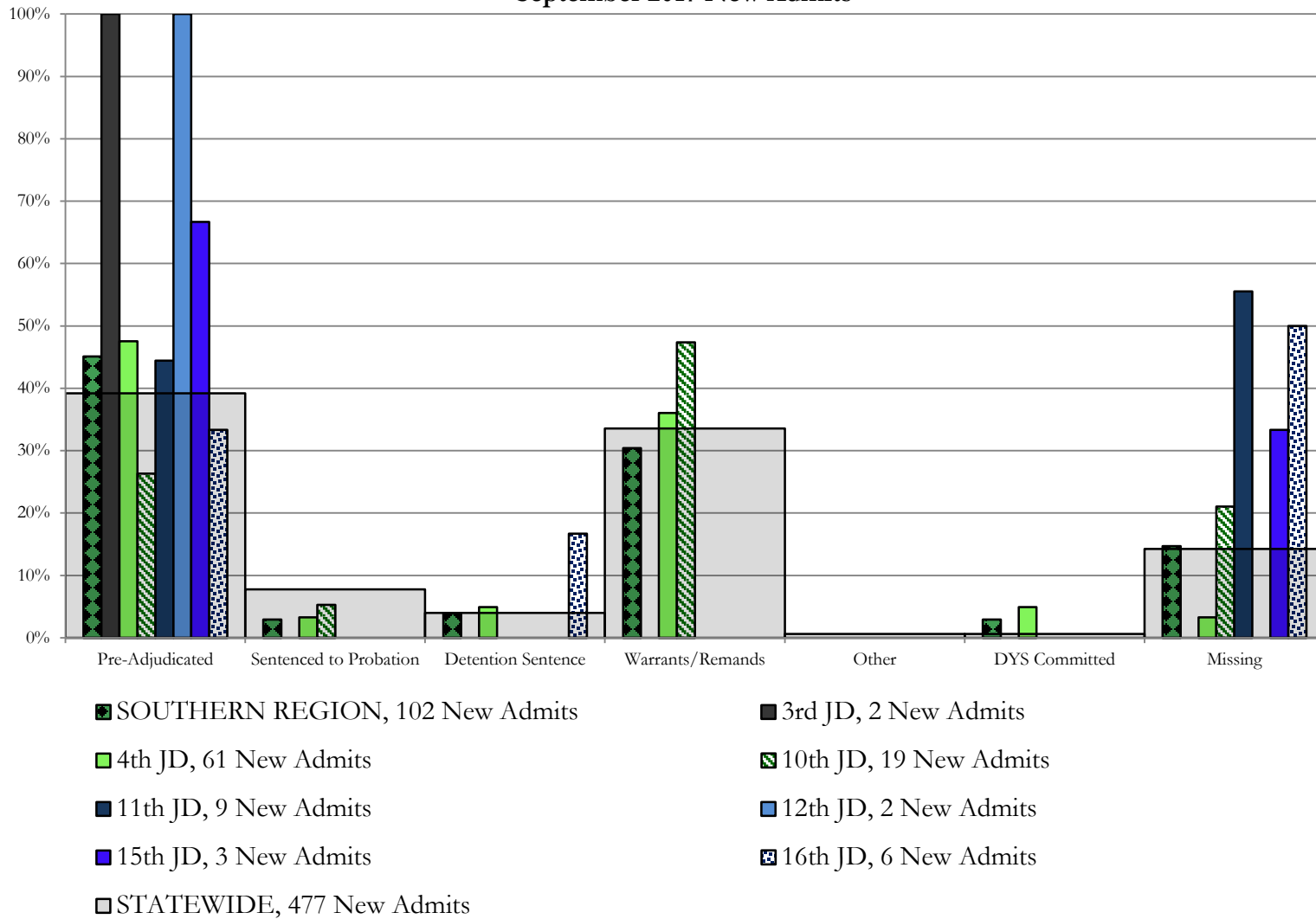
■ 17th JD, 40 New Admits

■ 19th JD, 34 New Admits

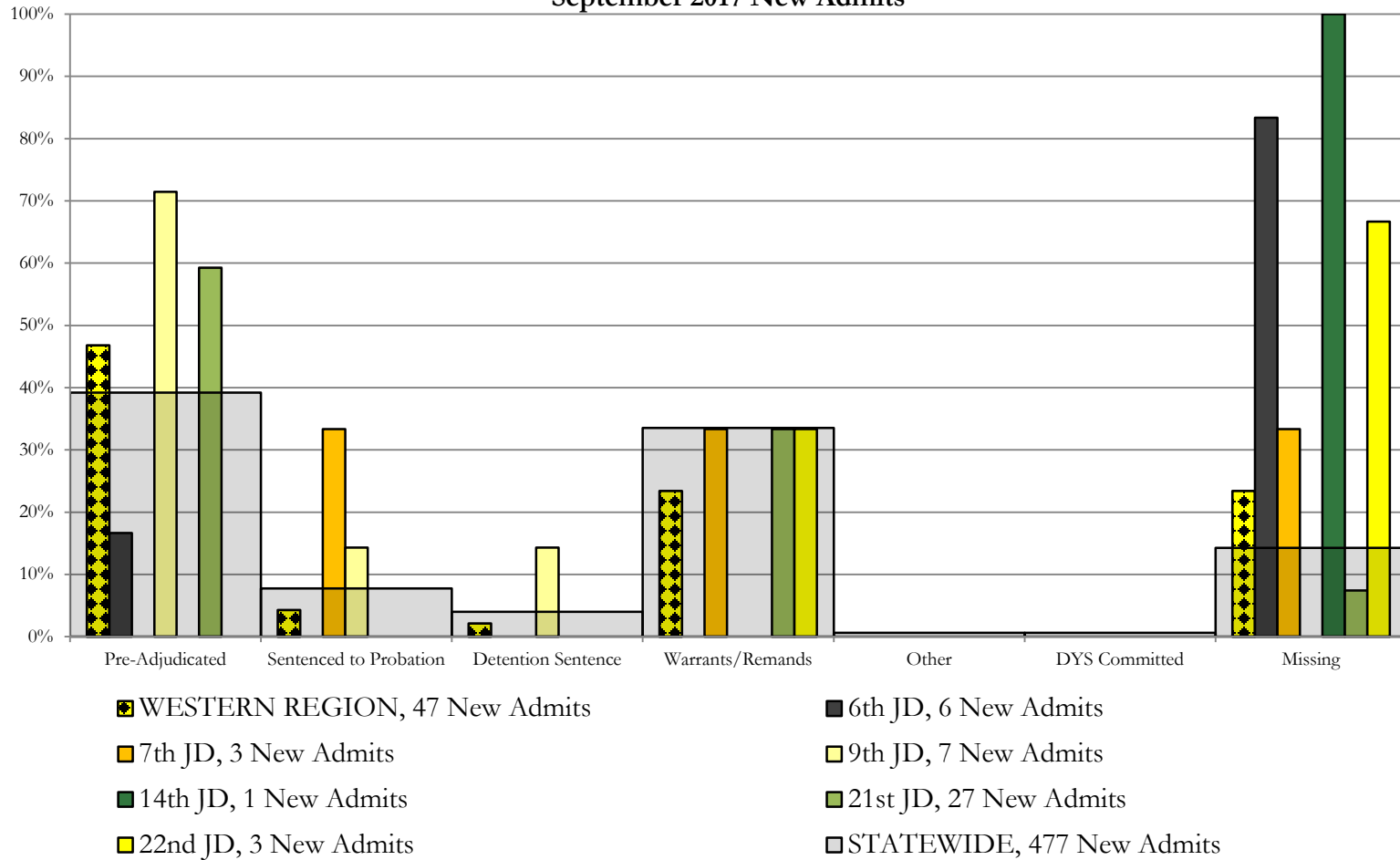
■ 20th JD, 9 New Admits

■ STATEWIDE, 477 New Admits

Southern Region SB94 Reason Detained by Judicial District September 2017 New Admits



Western Region SB94 Reason Detained by Judicial District September 2017 New Admits



September 2017 SB94 Supplemental Report

DYS Detention Maximum Youth Served by Judicial District¹

Region	JD	Detention Capacity	Detention ADP		Maximum Youth Served on a Single Day ^{2,3}			
			September 2017	YTD	September 2017		YTD	
					Number of Youth	% of Detention Capacity	Number of Youth	% of Detention Capacity
<i>Central Region</i>								
	1st	37	35.3	32.1	40	108.1%	40	108.1%
	2nd	64	37.5	37.8	49	76.6%	52	81.3%
	5th	4	1.7	1.2	3	75.0%	4	100.0%
	18th	61	40.5	36.8	47	77.0%	52	85.2%
Central Region		166	115.0	107.8	125	75.3%	125	75.3%
<i>Northeast Region</i>								
	8th	21	11.2	12.7	14	66.7%	18	85.7%
	13th	5	4.3	4.6	5	100.0%	7	140.0%
	17th	30	24.6	23.0	29	96.7%	29	96.7%
	19th	25	18.2	16.4	26	104.0%	26	104.0%
	20th	13	4.0	5.7	8	61.5%	11	84.6%
Northeast Region		94	62.4	62.4	68	72.3%	75	79.8%
<i>Southern Region</i>								
	3rd	2	0.5	0.6	1	50.0%	2	100.0%
	4th	51	44.0	44.2	50	98.0%	51	100.0%
	10th	13	12.0	11.6	19	146.2%	19	146.2%
	11th	8	1.6	2.5	4	50.0%	6	75.0%
	12th	4	1.4	2.5	2	50.0%	4	100.0%
	15th	2	1.6	1.0	3	150.0%	3	150.0%
	16th	3	1.5	0.6	3	100.0%	3	100.0%
Southern Region		83	62.7	63.0	72	86.7%	77	92.8%
<i>Western Region</i>								
	6th	5	4.4	5.1	7	140.0%	7	140.0%
	7th	7	3.0	2.6	4	57.1%	6	85.7%
	9th	6	2.2	2.2	4	66.7%	4	66.7%
	14th	3	1.1	0.8	2	66.7%	3	100.0%
	21st	14	16.0	15.4	18	128.6%	19	135.7%
	22nd	4	4.1	2.8	5	125.0%	5	125.0%
Western Region		39	30.7	29.0	35	89.7%	35	89.7%
<i>Missing JD or Multiple JDs</i>			2.1	2.4				
Statewide		382	272.9	264.5	286	74.9%	286	74.9%

¹ Maximum youth served is the highest number of youth in detention on a single day during the month or fiscal year.

² Regional figures are not the sum of judicial districts, but represent the maximum count on one day for the entire region.

³ State figures are not the sum of regional figures, but represent the maximum count on one day for the entire state.

September 2017 SB94 Supplemental Report

SB94 Community ADP by Judicial District

Region	JD	Committed		Diversion		ICJ		Municipal		Pre-Adjudicated		Sentenced		VCO		Total	
		September	YTD	September	YTD	September	YTD	September	YTD	September	YTD	September	YTD	September	YTD	September	YTD
<i>Central Region</i>																	
	1st	0.0	0.0	0.0	0.0	0.0	0.0	8.5	6.3	261.5	253.3	27.3	27.8	0.0	0.0	297.2	287.4
	2nd	1.0	1.0	0.8	0.3	1.0	0.6	0.0	0.0	133.5	129.3	31.1	30.5	0.0	0.0	167.5	161.7
	5th	0.0	0.0	13.0	13.0	0.0	0.0	0.0	0.0	16.3	12.0	30.6	28.8	0.0	0.0	59.8	53.8
	18th	2.1	2.4	5.0	4.6	0.0	0.0	0.0	0.0	350.4	324.2	48.9	45.8	8.0	8.0	414.3	384.9
Central Total		3.1	3.4	18.8	17.8	1.0	0.6	8.5	6.3	761.7	718.8	137.9	132.8	8.0	8.0	938.9	887.7
<i>Northeast Region</i>																	
	8th	0.0	0.0	2.0	2.0	0.0	0.0	0.0	0.0	59.1	55.5	65.4	61.5	0.0	0.0	126.5	119.0
	13th	0.0	0.0	0.0	0.0	0.0	0.0	0.0	0.0	12.7	13.6	3.2	2.8	5.2	5.6	21.1	22.0
	17th	2.0	1.8	0.0	0.0	0.0	0.0	1.0	1.0	197.0	180.2	77.8	76.0	0.0	0.0	277.9	258.9
	19th	0.2	0.1	0.0	0.0	0.0	0.0	0.0	0.0	72.2	65.1	36.2	32.5	1.0	1.0	109.5	98.7
	20th	1.0	0.6	11.8	6.9	0.0	0.0	0.0	0.0	66.2	49.9	16.3	15.4	3.4	3.1	98.8	75.9
Northeast Total		3.2	2.5	13.8	8.9	0.0	0.0	1.0	1.0	407.2	364.2	198.9	188.2	9.6	9.7	633.7	574.5
<i>Southern Region</i>																	
	3rd	0.0	0.0	0.0	0.0	0.0	0.0	0.0	0.0	11.0	10.9	7.0	7.0	0.0	0.0	18.0	17.9
	4th	0.4	2.5	0.0	0.0	0.0	0.0	122.7	127.2	124.8	115.6	53.3	51.2	0.0	0.0	301.2	296.6
	10th	3.6	3.2	0.0	0.0	1.0	1.0	2.0	2.1	15.1	12.0	17.8	16.7	2.0	2.0	41.5	37.0
	11th	1.0	1.0	1.0	0.8	0.0	0.0	9.4	8.6	13.2	9.6	20.0	20.0	1.0	1.0	45.7	41.0
	12th	0.0	0.0	1.5	1.5	0.0	0.0	1.0	1.0	11.5	10.0	1.7	1.5	0.0	0.0	15.6	13.9
	15th	0.0	0.0	0.8	0.3	0.0	0.0	0.0	0.0	5.6	4.9	6.0	5.0	0.0	0.0	12.4	10.2
	16th	0.0	0.0	0.0	0.0	0.0	0.0	0.0	0.0	6.4	6.5	8.0	8.4	16.0	16.0	30.4	30.9
Southern Total		5.0	6.7	3.3	2.5	1.0	1.0	135.1	138.9	187.7	169.5	113.8	109.8	19.0	19.0	464.8	447.5
<i>Western Region</i>																	
	6th	0.0	0.0	0.0	0.0	0.0	0.0	0.0	0.0	12.8	11.6	1.1	1.0	0.0	0.0	13.9	12.6
	7th	0.0	0.0	7.6	4.2	0.0	0.0	0.0	0.0	18.2	15.7	25.9	24.0	0.0	0.0	51.7	43.8
	9th	0.0	0.0	0.0	0.0	0.0	0.0	0.0	0.0	8.7	10.1	0.2	0.1	0.0	0.0	8.8	10.2
	14th	0.0	0.0	9.0	9.0	0.0	0.0	0.0	0.0	4.5	3.9	1.0	0.7	0.0	0.0	14.5	13.6
	21st	0.0	0.0	0.0	0.0	0.0	0.0	2.0	2.0	49.2	43.6	18.0	18.0	0.0	0.0	69.2	63.6
	22nd	0.0	0.0	0.0	0.0	0.0	0.0	0.0	0.0	6.5	8.2	3.0	3.0	0.0	0.0	9.5	11.2
Western Total		0.0	0.0	16.6	13.2	0.0	0.0	2.0	2.0	99.9	93.1	49.1	46.8	0.0	0.0	167.7	155.1
Statewide Total		11.3	12.6	52.6	42.5	2.0	1.6	146.6	148.3	1456.5	1345.7	499.6	477.6	36.5	36.7	2205.1	2064.9