

August 2017 FY 2017-2018 SB94 JDSAG SUPPLEMENTAL REPORT

Prepared by the Division of Youth Services (DYS)
Data Management and Analysis
September 20, 2017



CO L O R A D O

**Office of Children,
Youth & Families**

Division of Youth Services

August 2017 SB94 Supplemental Report

DYS Commitment ADP & New Commitments by Judicial District

Region	JD ¹	2018 Population Estimates ²	ADP ³		New Commitments		
			August 2017	YTD	August 2017	YTD	YTD Rate ⁴
<i>Central Region</i>							
	1st	56,139	76.7	76.6	3	4	0.7
	2nd	65,275	98.0	98.2	2	8	1.2
	5th	10,694	9.2	9.6	0	0	0.0
	18th	122,766	71.7	70.6	9	12	1.0
Central Total		254,874	255.6	255.1	14	24	0.9
<i>Northeast Region</i>							
	8th	34,025	39.8	40.8	0	2	0.6
	13th	8,531	8.0	7.7	0	1	1.2
	17th	73,588	68.3	68.8	2	4	0.5
	19th	37,441	54.6	57.5	1	4	1.1
	20th	33,056	11.7	11.7	0	0	0.0
Northeast Total		186,641	182.3	186.4	3	11	0.6
<i>Southern Region</i>							
	3rd	1,785	1.0	1.0	0	0	0.0
	4th	83,158	85.6	84.0	5	14	1.7
	10th	18,165	36.6	36.1	1	3	1.7
	11th	7,111	6.8	6.9	0	0	0.0
	12th	5,276	6.5	6.3	0	0	0.0
	15th	2,117	5.2	4.5	2	3	14.2
	16th	2,827	0.0	0.0	0	0	0.0
Southern Total		120,439	141.8	138.8	8	20	1.7
<i>Western Region</i>							
	6th	6,710	8.5	8.1	2	3	4.5
	7th	10,675	11.0	10.4	0	2	1.9
	9th	9,607	6.0	6.0	0	0	0.0
	14th	5,587	2.0	2.0	0	0	0.0
	21st	16,016	35.4	36.3	3	4	2.5
	22nd	3,144	4.2	4.0	1	1	3.2
Western Total		51,739	67.1	66.8	6	10	1.9
Statewide Total		613,693	646.7	647.0	31	65	1.1

¹ JD represents the judicial district in which the client was committed. Regional totals are a sum of their respective judicial districts. Regional totals reported here may differ slightly from those reported in the Monthly Population Report, where region is defined by active caseloads.

² Source: DOLA 2018 Estimates.

³ Due to rounding, totals shown may not be an exact sum of the subtotals.

⁴ Per 10,000 youth in the population.

August 2017 SB94 Supplemental Report

DYS Detention ADP and New Detention Admissions by Judicial District

Region	JD	2018 Population Estimates ¹	ADP		New Admits		
			August 2017	YTD	August 2017	YTD	YTD New Admit Rate ²
<i>Central Region</i>							
	1st	56,139	29.4	29.5	57	107	19.1
	2nd	65,275	32.5	37.9	72	136	20.8
	5th	10,694	1.4	0.9	5	8	7.5
	18th	122,766	39.6	36.4	115	180	14.7
Central Total		254,874	102.9	104.7	249	431	16.9
<i>Northeast Region</i>							
	8th	34,025	15.0	14.0	26	48	14.1
	13th	8,531	3.9	4.8	5	12	14.1
	17th	73,588	23.3	22.1	48	94	12.8
	19th	37,441	15.4	15.5	51	83	22.2
	20th	33,056	4.6	6.6	10	19	5.7
Northeast Total		186,641	62.2	63.0	140	256	13.7
<i>Southern Region</i>							
	3rd	1,785	0.2	0.6	6	11	61.6
	4th	83,158	45.2	45.3	58	117	14.1
	10th	18,165	11.0	11.5	21	51	28.1
	11th	7,111	2.9	3.0	7	18	25.3
	12th	5,276	3.1	3.0	3	7	13.3
	15th	2,117	1.0	0.7	3	4	18.9
	16th	2,827	0.1	0.1	2	3	10.6
Southern Total		120,439	63.7	64.2	100	211	17.5
<i>Western Region</i>							
	6th	6,710	5.2	5.4	10	13	19.4
	7th	10,675	3.4	2.5	5	10	9.4
	9th	9,607	2.1	2.3	3	7	7.3
	14th	5,587	1.3	0.7	3	5	8.9
	21st	16,016	14.0	15.1	18	34	21.2
	22nd	3,144	2.4	2.2	3	3	9.5
Western Total		51,739	28.5	28.1	42	72	13.9
<i>Missing JD or Multiple JDs</i>			2.3	2.5			
Statewide Total		613,693	259.5	262.6	531	970	15.8

¹ Source: DOLA 2018 Estimates.

² Per 10,000 youth in the population.

August 2017 SB94 Supplemental Report

DYS Detention LOS by Judicial District				
Region	JD	YTD Detention Releases	YTD LOS (days)	LOS (days) Compared to State AVG
<i>Central Region</i>				
	1st	104	12.1	-2.5
	2nd	154	15.1	0.5
	5th	7	2.5	-12.1
	18th	171	10.8	-3.8
Central Total		436	12.5	-2.1
<i>Northeast Region</i>				
	8th	48	13.1	-1.5
	13th	13	10.3	-4.3
	17th	91	12.6	-2.0
	19th	77	10.8	-3.8
	20th	21	31.8	17.2
Northeast Total		250	13.6	-1.0
<i>Southern Region</i>				
	3rd	11	3.4	-11.2
	4th	116	20.2	5.6
	10th	52	12.5	-2.1
	11th	20	9.2	-5.4
	12th	7	14.2	-0.4
	15th	4	30.4	15.8
	16th	3	1.4	-13.2
Southern Total		213	16.1	1.6
<i>Western Region</i>				
	6th	14	25.4	10.8
	7th	7	15.9	1.3
	9th	8	14.2	-0.4
	14th	4	5.1	-9.5
	21st	31	19.2	4.6
	22nd	2	55.4	40.9
Western Total		66	19.8	5.2
Statewide Total		965	14.6	-

August 2017 SB94 JDSAG Supplemental Report

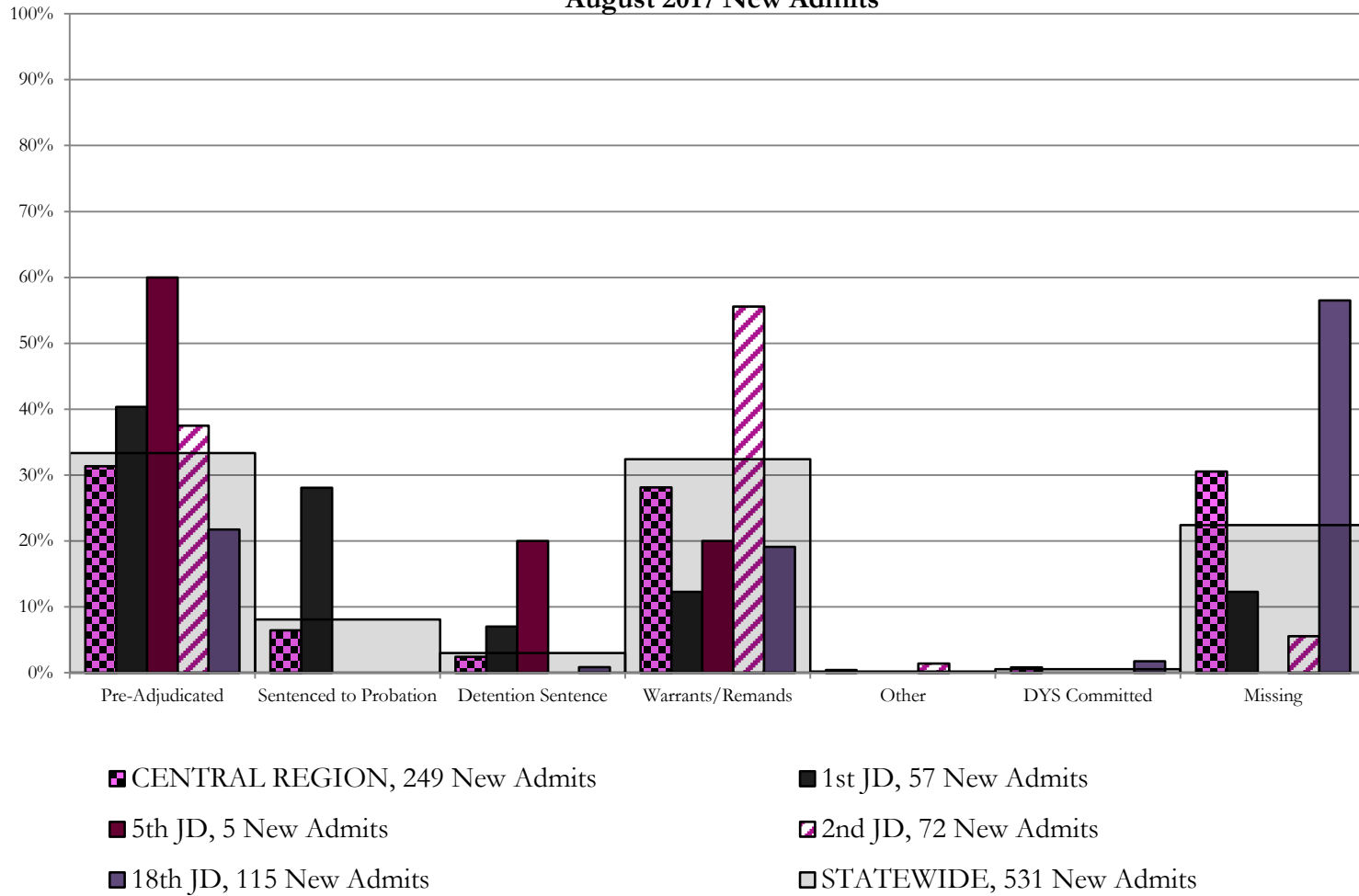
SB94 Reason Detained (RD) by Judicial District

Region	JD	Monthly New Admits	Pre-Adjudicated		Sentenced to Probation		Detention Sentence				Warrants/Remands				Other						DYS Committed		Missing															
			Felony	Misdemeanor	Technical Violator	New Charges	Probation Sentence	Detention Sentence	Valid Court Order (VCO) Truancy	Awaiting DSS (Social Services) Placement	Failure to Appear (FTA)	Failure to Comply (FTC)	Interstate Compact on Juveniles (ICJ) Hold	Immigration Hold	No Bond Hold	Out-of-Country Warrant	Institutional	Parole	Missing																			
			#	%	#	%	#	%	#	%	#	%	#	%	#	%	#	%	#	%	#	%	#	%	#	%	#	%	#	%								
Central Region																																						
	1st	57	15	26.3%	8	14.0%	16	28.1%	0	0.0%	0	0.0%	4	7.0%	0	0.0%	0	0.0%	3	5.3%	4	7.0%	0	0.0%	0	0.0%	0	0.0%	0	0.0%	0	0.0%	0	0.0%	7	12.3%		
	2nd	72	20	27.8%	7	9.7%	0	0.0%	0	0.0%	0	0.0%	0	0.0%	0	0.0%	0	0.0%	12	16.7%	28	38.9%	1	1.4%	0	0.0%	0	0.0%	0	0.0%	0	0.0%	0	0.0%	4	5.6%		
	5th	5	3	60.0%	0	0.0%	0	0.0%	0	0.0%	0	0.0%	1	20.0%	0	0.0%	0	0.0%	0	0.0%	1	20.0%	0	0.0%	0	0.0%	0	0.0%	0	0.0%	0	0.0%	0	0.0%	0	0.0%		
	18th	115	13	11.3%	12	10.4%	0	0.0%	0	0.0%	0	0.0%	1	0.9%	0	0.0%	0	0.0%	2	1.7%	20	17.4%	0	0.0%	0	0.0%	0	0.0%	0	0.0%	1	0.9%	1	0.9%	65	56.5%		
Central Total		249	51	20%	27	11%	16	6.4%	0	0.0%	0	0.0%	6	2.4%	0	0.0%	0	0.0%	17	7%	53	21%	1	0.4%	0	0.0%	0	0.0%	0	0.0%	0	0.0%	1	0.4%	1	0.4%	76	30.5%
Northeast Region																																						
	8th	26	5	19.2%	1	3.8%	0	0.0%	0	0.0%	0	0.0%	2	7.7%	0	0.0%	0	0.0%	1	3.8%	9	34.6%	0	0.0%	0	0.0%	0	0.0%	0	0.0%	0	0.0%	0	0.0%	8	30.8%		
	13th	5	0	0.0%	2	40.0%	0	0.0%	0	0.0%	0	0.0%	0	0.0%	0	0.0%	0	0.0%	0	0.0%	0	0.0%	0	0.0%	0	0.0%	0	0.0%	0	0.0%	0	0.0%	0	0.0%	3	60.0%		
	17th	48	9	18.8%	2	4.2%	0	0.0%	0	0.0%	0	0.0%	1	2.1%	0	0.0%	0	0.0%	9	18.8%	19	39.6%	0	0.0%	0	0.0%	0	0.0%	0	0.0%	0	0.0%	0	0.0%	8	16.7%		
	19th	51	9	17.6%	7	13.7%	21	41.2%	0	0.0%	0	0.0%	1	2.0%	0	0.0%	0	0.0%	1	2.0%	12	23.5%	0	0.0%	0	0.0%	0	0.0%	0	0.0%	0	0.0%	0	0.0%	0	0.0%	0	0.0%
	20th	10	2	20.0%	0	0.0%	1	10.0%	0	0.0%	0	0.0%	0	0.0%	0	0.0%	5	50.0%	0	0.0%	0	0.0%	0	0.0%	0	0.0%	0	0.0%	0	0.0%	0	0.0%	0	0.0%	2	20.0%		
Northeast Total		140	25	18%	12	9%	22	15.7%	0	0.0%	0	0.0%	4	2.9%	0	0.0%	5	3.6%	11	7.9%	40	29%	0	0.0%	0	0.0%	0	0.0%	0	0.0%	0	0.0%	0	0.0%	0	0.0%	21	15%
Southern Region																																						
	3rd	6	1	16.7%	0	0.0%	2	33.3%	0	0.0%	0	0.0%	0	0.0%	0	0.0%	0	0.0%	0	0.0%	0	0.0%	0	0.0%	0	0.0%	0	0.0%	0	0.0%	0	0.0%	0	0.0%	3	50.0%		
	4th	58	24	41.4%	2	3.4%	0	0.0%	1	1.7%	0	0.0%	0	0.0%	0	0.0%	0	0.0%	10	17.2%	18	31.0%	0	0.0%	0	0.0%	0	0.0%	1	1.7%	0	0.0%	0	0.0%	2	3.4%		
	10th	21	3	14.3%	1	4.8%	0	0.0%	0	0.0%	0	0.0%	0	0.0%	0	0.0%	0	0.0%	5	23.8%	7	33.3%	0	0.0%	0	0.0%	0	0.0%	0	0.0%	0	0.0%	0	0.0%	5	23.8%		
	11th	7	5	71.4%	0	0.0%	0	0.0%	0	0.0%	0	0.0%	0	0.0%	0	0.0%	0	0.0%	0	0.0%	0	0.0%	0	0.0%	0	0.0%	0	0.0%	0	0.0%	0	0.0%	2	28.6%				
	12th	3	2	66.7%	0	0.0%	0	0.0%	0	0.0%	0	0.0%	0	0.0%	0	0.0%	0	0.0%	0	0.0%	1	33.3%	0	0.0%	0	0.0%	0	0.0%	0	0.0%	0	0.0%	0	0.0%	0	0.0%		
	15th	3	2	66.7%	0	0.0%	1	33.3%	0	0.0%	0	0.0%	0	0.0%	0	0.0%	0	0.0%	0	0.0%	0	0.0%	0	0.0%	0	0.0%	0	0.0%	0	0.0%	0	0.0%	0	0.0%	0	0.0%		
	16th	2	2	100.0%	0	0.0%	0	0.0%	0	0.0%	0	0.0%	0	0.0%	0	0.0%	0	0.0%	0	0.0%	0	0%	0	0.0%	0	0.0%	0	0.0%	0	0.0%	0	0.0%	0	0.0%	0	0.0%		
Southern Total		100	39	39%	3	3%	3	3.0%	1	1.0%	0	0.0%	0	0.0%	0	0.0%	0	0.0%	15	15%	26	26%	0	0.0%	0	0.0%	0	0.0%	0	0.0%	0	0.0%	1	1.0%	0	0.0%	12	12%
Western Region																																						
	6th	10	2	20.0%	2	20.0%	0	0.0%	0	0.0%	0	0.0%	0	0.0%	0	0.0%	0	0.0%	0	0.0%	2	20.0%	0	0.0%	0	0.0%	0	0.0%	0	0.0%	0	0.0%	0	0.0%	4	40.0%		
	7th	5	2	40.0%	0	0.0%	0	0.0%	0	0.0%	0	0.0%	1	20.0%	0	0.0%	0	0.0%	1	20.0%	1	20.0%	0	0.0%	0	0.0%	0	0.0%	0	0.0%	0	0.0%	0	0.0%	0	0.0%		
	9th	3	0	0.0%	1	33.3%	1	33.3%	0	0.0%	0	0.0%	0	0.0%	0	0.0%	0	0.0%	0	0.0%	0	0.0%	0	0.0%	0	0.0%	0	0.0%	0	0.0%	0	0.0%	0	0.0%	1	33.3%		
	14th	3	0	0.0%	1	33.3%	0	0.0%	0	0.0%	0	0.0%	0	0.0%	0	0.0%	0	0.0%	0	0.0%	0	0.0%	0	0.0%	0	0.0%	0	0.0%	0	0.0%	0	0.0%	0	0.0%	2	66.7%		
	21st	18	8	44.4%	4	22.2%	0	0.0%	0	0.0%	0	0.0%	0	0.0%	0	0.0%	0	0.0%	0	0.0%	6	33.3%	0	0.0%	0	0.0%	0	0.0%	0	0.0%	0	0.0%	0	0.0%	0	0.0%		
	22nd	3	0	0.0%	0	0.0%	0	0.0%	0	0.0%	0	0.0%	0	0.0%	0	0.0%	0	0.0%	0	0.0%	0	0.0%	0	0.0%	0	0.0%	0	0.0%	0	0.0%	0	0.0%	0	0.0%	3	100.0%		
Western Total		42	12	29%	8	19.0%	1	2.4%	0	0.0%	0	0.0%	1	2.4%	0	0.0%	0	0.0%	1	2.4%	9	21%	0	0.0%	0	0.0%	0	0.0%	0	0.0%	0	0.0%	0	0.0%	10	24%		
Individual RD Totals		531	127	24%	50	9%	42	7.9%	1	0.2%	0	0.0%	11	2.1%	0	0.0%	5	0.9%	44	8%	128	24%	1	0.2%	0	0.0%	0	0.0%	0	0.0%	0	0.0%	2	0.4%	1	0.2%	119	22%
Statewide Totals		531	177	33.3%	43	8.1%	16	3.0%	0	0.0%	0	0.0%	17	3.2%	0	0.0%	5	0.9%	172	32.4%	1	0.2%	0	0.0%	0	0.0%	0	0.0%	3	0.6%	119	22%						

Central Region

SB94 Reason Detained by Judicial District

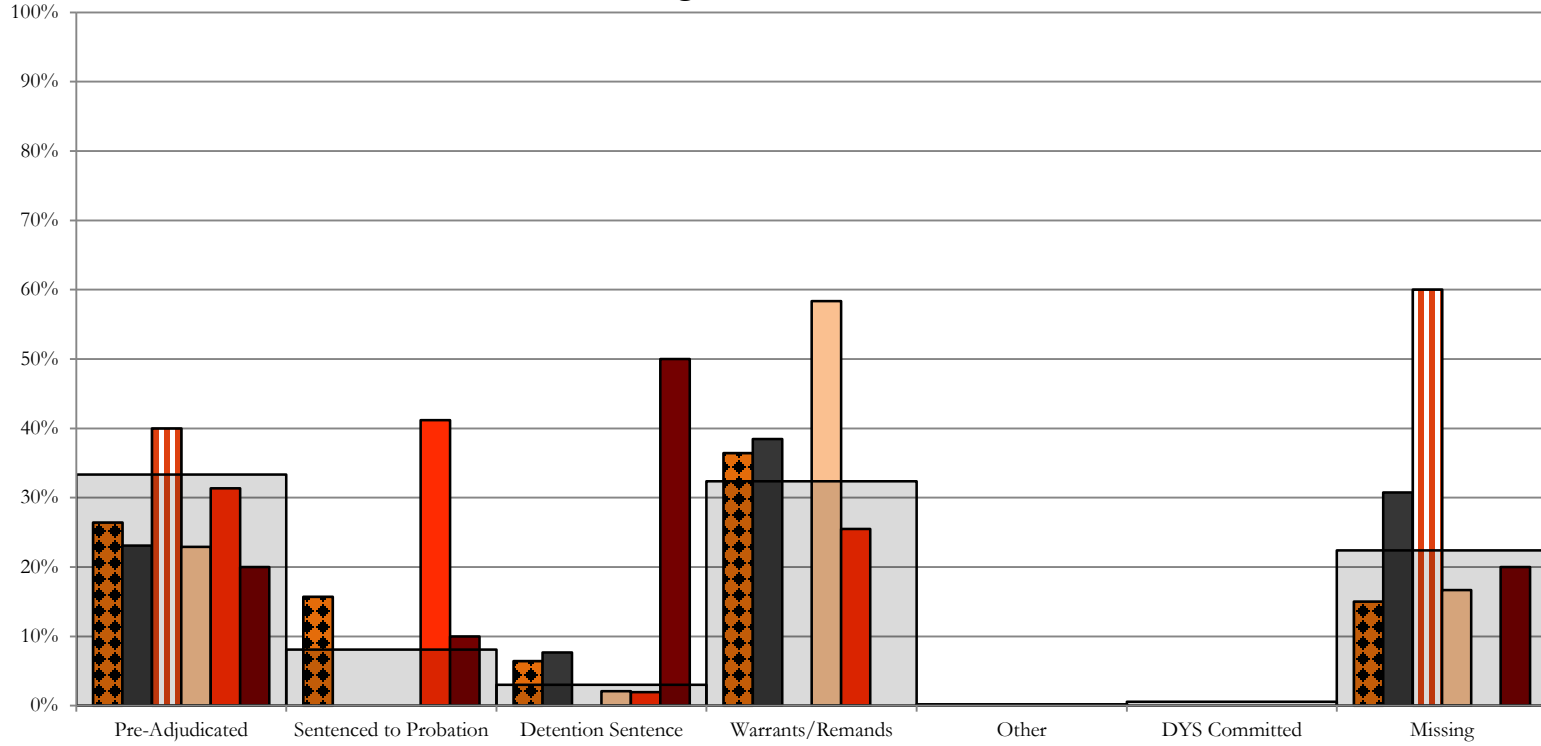
August 2017 New Admits



Northeast Region

SB94 Reason Detained by Judicial District

August 2017 New Admits



■ NORTHEAST REGION, 140 New Admits

■ 8th JD, 26 New Admits

■ 13th JD, 5 New Admits

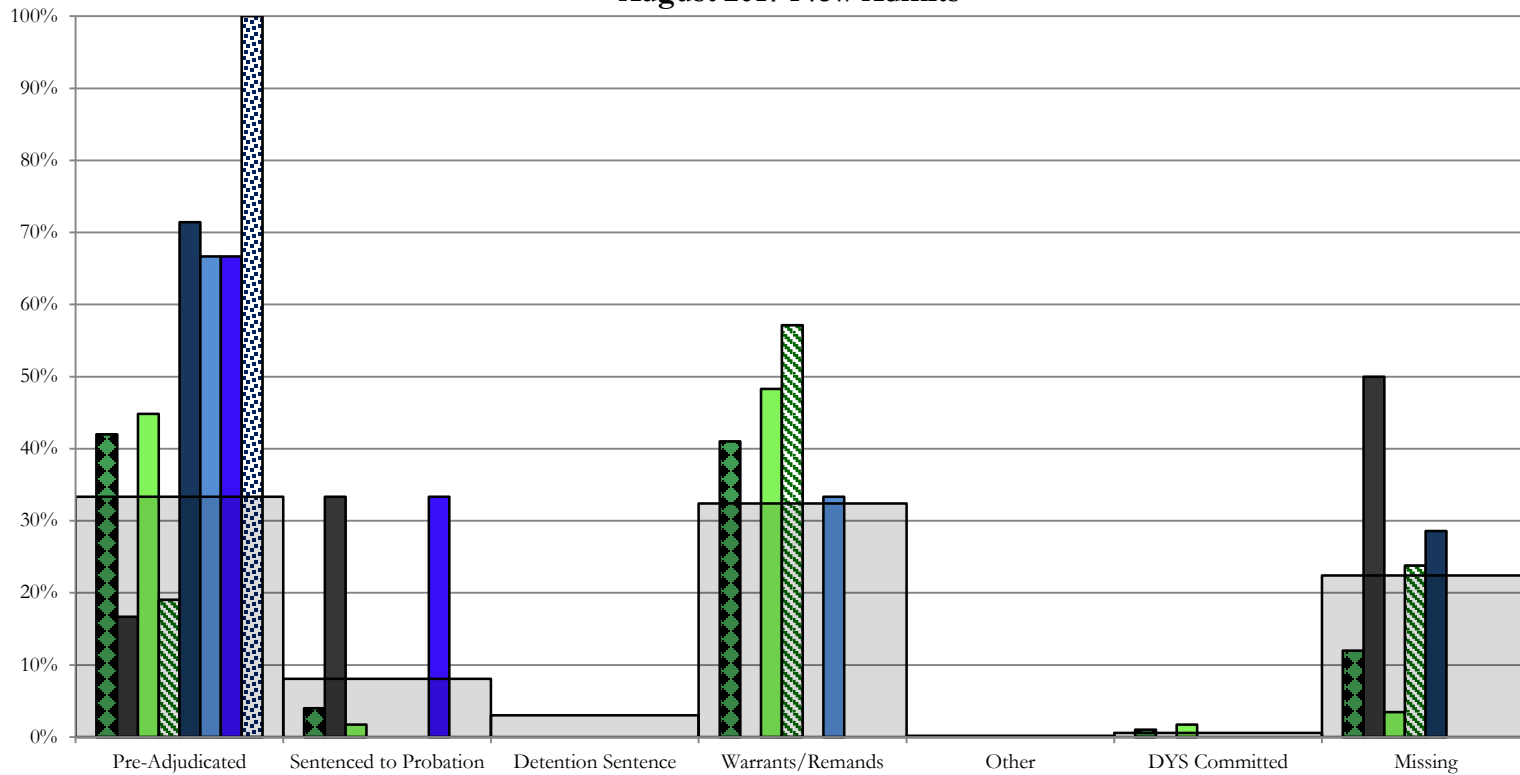
■ 17th JD, 48 New Admits

■ 19th JD, 51 New Admits

■ 20th JD, 10 New Admits

■ STATEWIDE, 531 New Admits

Southern Region SB94 Reason Detained by Judicial District August 2017 New Admits



■ SOUTHERN REGION, 100 New Admits

■ 4th JD, 58 New Admits

■ 11th JD, 7 New Admits

■ 15th JD, 3 New Admits

■ STATEWIDE, 531 New Admits

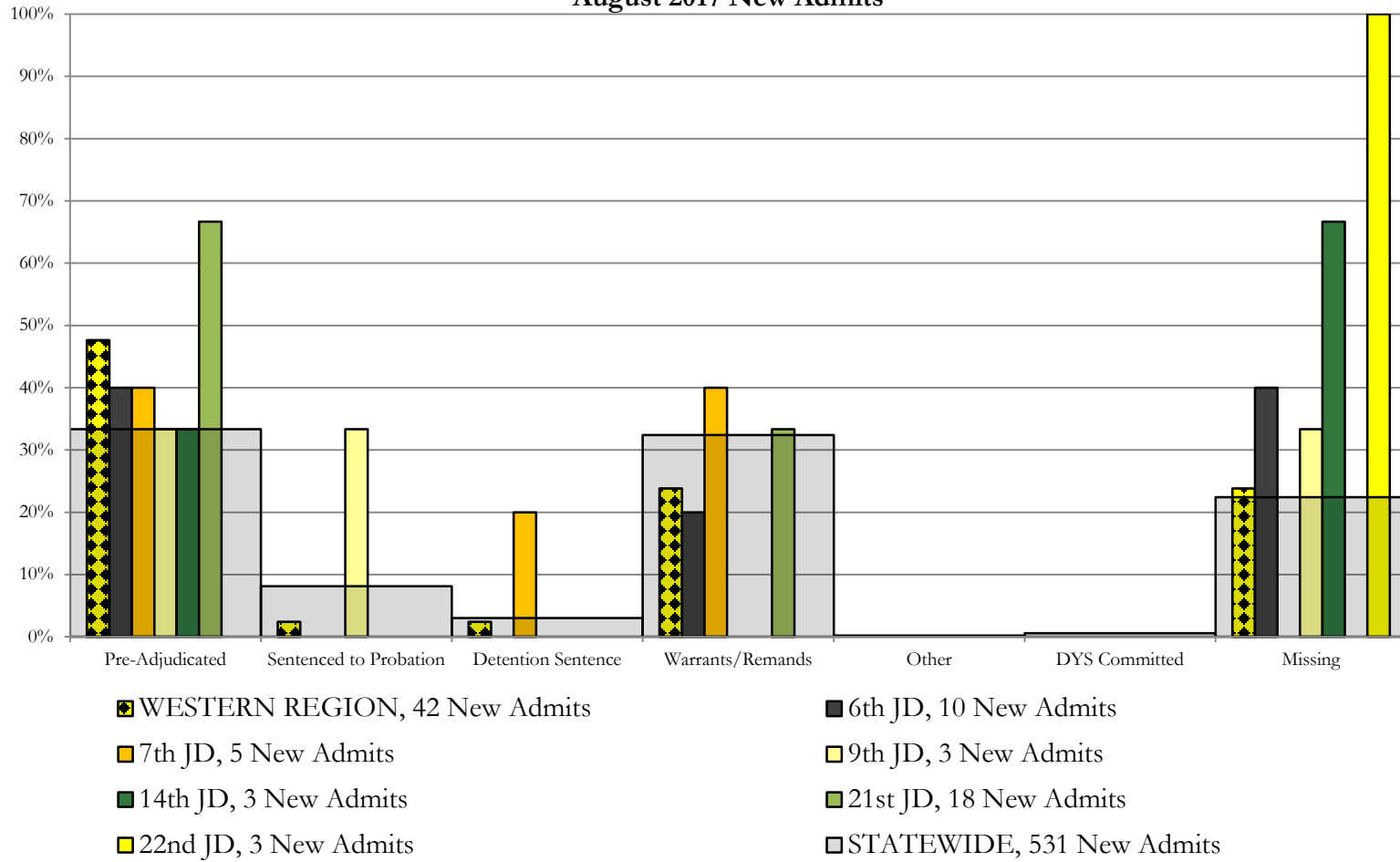
■ 3rd JD, 6 New Admits

■ 10th JD, 21 New Admits

■ 12th JD, 3 New Admits

■ 16th JD, 2 New Admits

Western Region SB94 Reason Detained by Judicial District August 2017 New Admits



August 2017 SB94 Supplemental Report

DYS Detention Maximum Youth Served by Judicial District¹

Region	JD	Detention Capacity	Detention ADP		Maximum Youth Served on a Single Day ^{2,3}			
			August 2017	YTD	August 2017		YTD	
					Number of Youth	% of Detention Capacity	Number of Youth	% of Detention Capacity
<i>Central Region</i>								
	1st	37	29.4	29.5	35	94.6%	37	100.0%
	2nd	64	32.5	37.9	39	60.9%	52	81.3%
	5th	4	1.4	0.9	4	100.0%	4	100.0%
	18th	61	39.6	36.4	53	86.9%	53	86.9%
Central Region		166	102.9	104.7	117	70.5%	120	72.3%
<i>Northeast Region</i>								
	8th	21	15.0	14.0	18	85.7%	18	85.7%
	13th	5	3.9	4.8	6	120.0%	7	140.0%
	17th	30	23.3	22.1	27	90.0%	27	90.0%
	19th	25	15.4	15.5	24	96.0%	24	96.0%
	20th	13	4.6	6.6	8	61.5%	11	84.6%
Northeast Region		94	62.2	63.0	75	79.8%	75	79.8%
<i>Southern Region</i>								
	3rd	2	0.2	0.6	2	100.0%	2	100.0%
	4th	51	45.2	45.3	52	102.0%	52	102.0%
	10th	13	11.0	11.5	16	123.1%	16	123.1%
	11th	8	2.9	3.0	5	62.5%	6	75.0%
	12th	4	3.1	3.0	4	100.0%	4	100.0%
	15th	2	1.0	0.7	2	100.0%	2	100.0%
	16th	3	0.1	0.1	1	33.3%	1	33.3%
Southern Region		83	63.7	64.2	75	90.4%	78	94.0%
<i>Western Region</i>								
	6th	5	5.2	5.4	7	140.0%	7	140.0%
	7th	7	3.4	2.5	6	85.7%	6	85.7%
	9th	6	2.1	2.3	3	50.0%	4	66.7%
	14th	3	1.3	0.7	3	100.0%	3	100.0%
	21st	14	14.0	15.1	17	121.4%	19	135.7%
	22nd	4	2.4	2.2	4	100.0%	4	100.0%
Western Region		39	28.5	28.1	33	84.6%	33	84.6%
<i>Missing JD or Multiple JDs</i>			2.3	2.5				
Statewide		382	259.5	262.6	279	73.0%	279	73.0%

¹ Maximum youth served is the highest number of youth in detention on a single day during the month or fiscal year.

² Regional figures are not the sum of judicial districts, but represent the maximum count on one day for the entire region.

³ State figures are not the sum of regional figures, but represent the maximum count on one day for the entire state.

August 2017 SB94 Supplemental Report

SB94 Community ADP by Judicial District

Region	JD	Committed		Diversion		ICJ		Municipal		Pre-Adjudicated		Sentenced		VCO		Total	
		August	YTD	August	YTD	August	YTD	August	YTD	August	YTD	August	YTD	August	YTD	August	YTD
<i>Central Region</i>																	
	1st	0.0	0.0	0.0	0.0	0.0	0.0	6.0	5.0	246.2	250.8	27.3	29.7	0.0	0.0	279.5	285.4
	2nd	1.0	1.0	0.0	0.0	0.7	0.4	0.0	0.0	139.9	136.0	30.1	31.2	0.0	0.0	171.7	168.6
	5th	0.0	0.0	13.0	13.0	0.0	0.0	0.0	0.0	11.7	9.7	32.8	32.0	0.0	0.0	57.5	54.6
	18th	3.0	2.5	5.7	5.2	0.0	0.0	0.0	0.0	325.9	313.7	47.3	44.3	8.0	8.0	389.9	373.6
Central Total		4.0	3.5	18.7	18.2	0.7	0.4	6.0	5.0	723.7	710.1	137.5	137.2	8.0	8.0	898.7	882.3
<i>Northeast Region</i>																	
	8th	0.0	0.0	2.0	2.0	0.0	0.0	0.0	0.0	54.4	55.3	59.0	59.0	0.0	0.0	115.5	116.3
	13th	0.0	0.0	0.0	0.0	0.0	0.0	0.0	0.0	14.8	14.0	2.3	2.6	4.9	5.8	22.0	22.4
	17th	2.0	1.6	0.0	0.0	0.0	0.0	1.0	1.0	183.4	174.6	73.8	73.1	0.0	0.0	260.2	250.3
	19th	0.1	0.1	0.0	0.0	0.0	0.0	0.0	0.0	94.5	89.0	54.7	51.2	1.0	1.0	150.2	141.3
	20th	0.8	0.4	18.1	14.5	0.0	0.0	0.0	0.0	97.5	91.9	39.0	39.0	49.0	49.0	204.4	194.8
Northeast Total		2.8	2.1	20.1	16.5	0.0	0.0	1.0	1.0	444.6	424.8	228.8	224.8	54.9	55.8	752.2	725.1
<i>Southern Region</i>																	
	3rd	0.0	0.0	0.0	0.0	0.0	0.0	0.0	0.0	11.0	10.8	7.0	7.0	0.0	0.0	18.0	17.8
	4th	5.1	5.6	0.0	0.0	0.0	0.0	93.4	87.0	122.9	119.4	53.4	49.8	0.0	0.0	274.8	261.7
	10th	3.9	3.0	0.0	0.0	1.0	1.0	2.0	2.2	11.5	11.0	14.5	15.7	3.0	3.0	36.0	35.9
	11th	1.0	1.0	1.0	0.7	0.0	0.0	9.0	8.2	9.2	7.8	20.0	20.0	1.0	1.0	41.2	38.8
	12th	0.0	0.0	2.0	1.5	0.0	0.0	1.0	1.0	10.3	9.2	1.7	1.4	0.0	0.0	15.0	13.1
	15th	0.0	0.0	0.0	0.0	0.0	0.0	0.0	0.0	5.0	4.6	5.6	4.6	0.0	0.0	10.6	9.1
	16th	0.0	0.0	0.0	0.0	0.0	0.0	0.0	0.0	6.5	6.5	7.1	7.7	17.0	17.0	30.6	31.2
Southern Total		10.0	9.6	3.0	2.2	1.0	1.0	105.4	98.4	176.4	169.4	109.3	106.0	21.0	21.0	426.2	407.6
<i>Western Region</i>																	
	6th	0.0	0.0	0.0	0.0	0.0	0.0	0.0	0.0	12.4	11.3	1.0	1.0	0.0	0.0	13.4	12.3
	7th	0.0	0.0	2.1	2.5	0.0	0.0	0.0	0.0	15.1	14.4	24.5	23.1	0.0	0.0	41.6	40.0
	9th	0.0	0.0	0.0	0.0	0.0	0.0	0.0	0.0	12.5	12.4	0.1	0.1	0.0	0.0	12.6	12.4
	14th	0.0	0.0	9.0	9.0	0.0	0.0	0.0	0.0	4.0	3.7	1.0	0.5	0.0	0.0	14.0	13.2
	21st	0.0	0.0	0.0	0.0	0.0	0.0	2.0	2.0	43.0	41.1	19.4	19.1	0.0	0.0	64.4	62.2
	22nd	0.0	0.0	0.0	0.0	0.0	0.0	0.0	0.0	7.0	9.1	3.0	3.0	0.0	0.0	10.0	12.1
Western Total		0.0	0.0	11.1	11.5	0.0	0.0	2.0	2.0	93.9	91.8	49.0	46.7	0.0	0.0	156.0	152.1
Statewide Total		16.9	15.2	52.9	48.3	1.7	1.4	114.3	106.4	1438.5	1396.2	524.6	514.8	83.9	84.8	2233.0	2167.0