

July 2017 FY 2017-2018 SB94 JDSAG SUPPLEMENTAL REPORT

Prepared by the Division of Youth Services (DYS)
Data Management and Analysis
August 23, 2017



COLORADO

**Office of Children,
Youth & Families**

Division of Youth Services

July 2017 SB94 Supplemental Report

DYS Commitment ADP & New Commitments by Judicial District

Region	JD ¹	2018 Population Estimates ²	ADP ³		New Commitments		
			July 2017	YTD	July 2017	YTD	YTD Rate ⁴
<i>Central Region</i>							
	1st	56,139	76.5	76.5	1	1	0.2
	2nd	65,275	98.5	98.5	6	6	0.9
	5th	10,694	10.0	10.0	0	0	0.0
	18th	122,766	69.5	69.5	3	3	0.2
Central Total		254,874	254.5	254.5	10	10	0.4
<i>Northeast Region</i>							
	8th	34,025	43.0	43.0	2	2	0.6
	13th	8,531	7.4	7.4	1	1	1.2
	17th	73,588	69.2	69.2	1	1	0.1
	19th	37,441	60.6	60.6	3	3	0.8
	20th	33,056	11.7	11.7	0	0	0.0
Northeast Total		186,641	191.8	191.8	7	7	0.4
<i>Southern Region</i>							
	3rd	1,785	1.0	1.0	0	0	0.0
	4th	83,158	82.5	82.5	9	9	1.1
	10th	18,165	35.5	35.5	2	2	1.1
	11th	7,111	7.0	7.0	0	0	0.0
	12th	5,276	6.0	6.0	0	0	0.0
	15th	2,117	3.8	3.8	1	1	4.7
	16th	2,827	0.0	0.0	0	0	0.0
Southern Total		120,439	135.8	135.8	12	12	1.0
<i>Western Region</i>							
	6th	6,710	7.8	7.8	1	1	1.5
	7th	10,675	9.8	9.8	2	2	1.9
	9th	9,607	6.0	6.0	0	0	0.0
	14th	5,587	2.0	2.0	0	0	0.0
	21st	16,016	37.2	37.2	1	1	0.6
	22nd	3,144	3.8	3.8	0	0	0.0
Western Total		51,739	66.5	66.5	4	4	0.8
Statewide Total		613,693	648.6	648.6	33	33	0.5

¹ JD represents the judicial district in which the client was committed. Regional totals are a sum of their respective judicial districts. Regional totals reported here may differ slightly from those reported in the Monthly Population Report, where region is defined by active caseloads.

² Source: DOLA 2018 Estimates.

³ Due to rounding, totals shown may not be an exact sum of the subtotals.

⁴ Per 10,000 youth in the population.

July 2017 SB94 Supplemental Report

DYS Detention ADP and New Detention Admissions by Judicial District

Region	JD	2018 Population Estimates ¹	ADP		New Admits		
			July 2017	YTD	July 2017	YTD	YTD New Admit Rate ²
<i>Central Region</i>							
	1st	56,139	30.0	30.0	51	51	9.1
	2nd	65,275	43.3	43.3	64	64	9.8
	5th	10,694	0.4	0.4	3	3	2.8
	18th	122,766	34.7	34.7	66	66	5.4
Central Total		254,874	108.4	108.4	184	184	7.2
<i>Northeast Region</i>							
	8th	34,025	12.8	12.8	21	21	6.2
	13th	8,531	5.6	5.6	7	7	8.2
	17th	73,588	21.0	21.0	46	46	6.3
	19th	37,441	15.7	15.7	33	33	8.8
	20th	33,056	8.5	8.5	9	9	2.7
Northeast Total		186,641	63.6	63.6	116	116	6.2
<i>Southern Region</i>							
	3rd	1,785	1.0	1.0	5	5	28.0
	4th	83,158	45.4	45.4	59	59	7.1
	10th	18,165	11.9	11.9	30	30	16.5
	11th	7,111	3.0	3.0	11	11	15.5
	12th	5,276	3.0	3.0	4	4	7.6
	15th	2,117	0.4	0.4	1	1	4.7
	16th	2,827	0.1	0.1	1	1	3.5
Southern Total		120,439	64.8	64.8	111	111	9.2
<i>Western Region</i>							
	6th	6,710	5.6	5.6	3	3	4.5
	7th	10,675	1.5	1.5	5	5	4.7
	9th	9,607	2.4	2.4	4	4	4.2
	14th	5,587	0.1	0.1	2	2	3.6
	21st	16,016	16.2	16.2	16	16	10.0
	22nd	3,144	2.0	2.0	0	0	0.0
Western Total		51,739	27.8	27.8	30	30	5.8
<i>Missing JD or Multiple JDs</i>			2.7	2.7			
Statewide Total		613,693	267.3	267.3	441	441	7.2

¹ Source: DOLA 2018 Estimates.

² Per 10,000 youth in the population.

July 2017 SB94 Supplemental Report

DYS Detention LOS by Judicial District				
Region	JD	YTD Detention Releases	YTD LOS (days)	LOS (days) Compared to State AVG
<i>Central Region</i>				
	1st	56	13.6	-0.9
	2nd	74	16.6	2.1
	5th	2	4.1	-10.4
	18th	65	14.0	-0.5
Central Total		197	14.8	0.2
<i>Northeast Region</i>				
	8th	20	10.0	-4.6
	13th	6	14.1	-0.5
	17th	44	15.0	0.4
	19th	39	13.0	-1.5
	20th	13	13.4	-1.1
Northeast Total		122	13.3	-1.2
<i>Southern Region</i>				
	3rd	5	3.6	-11.0
	4th	58	17.0	2.4
	10th	31	9.1	-5.5
	11th	8	1.3	-13.2
	12th	2	26.6	12.1
	15th	1	86.1	71.6
	16th	1	1.1	-13.4
Southern Total		106	13.5	-1.0
<i>Western Region</i>				
	6th	3	20.4	5.9
	7th	3	15.1	0.5
	9th	4	3.9	-10.6
	14th	1	2.1	-12.4
	21st	17	19.1	4.6
	22nd	0	0.0	-14.5
Western Total		28	16.0	1.5
Statewide Total		453	14.5	-

July 2017 SB94 JDSAG Supplemental Report

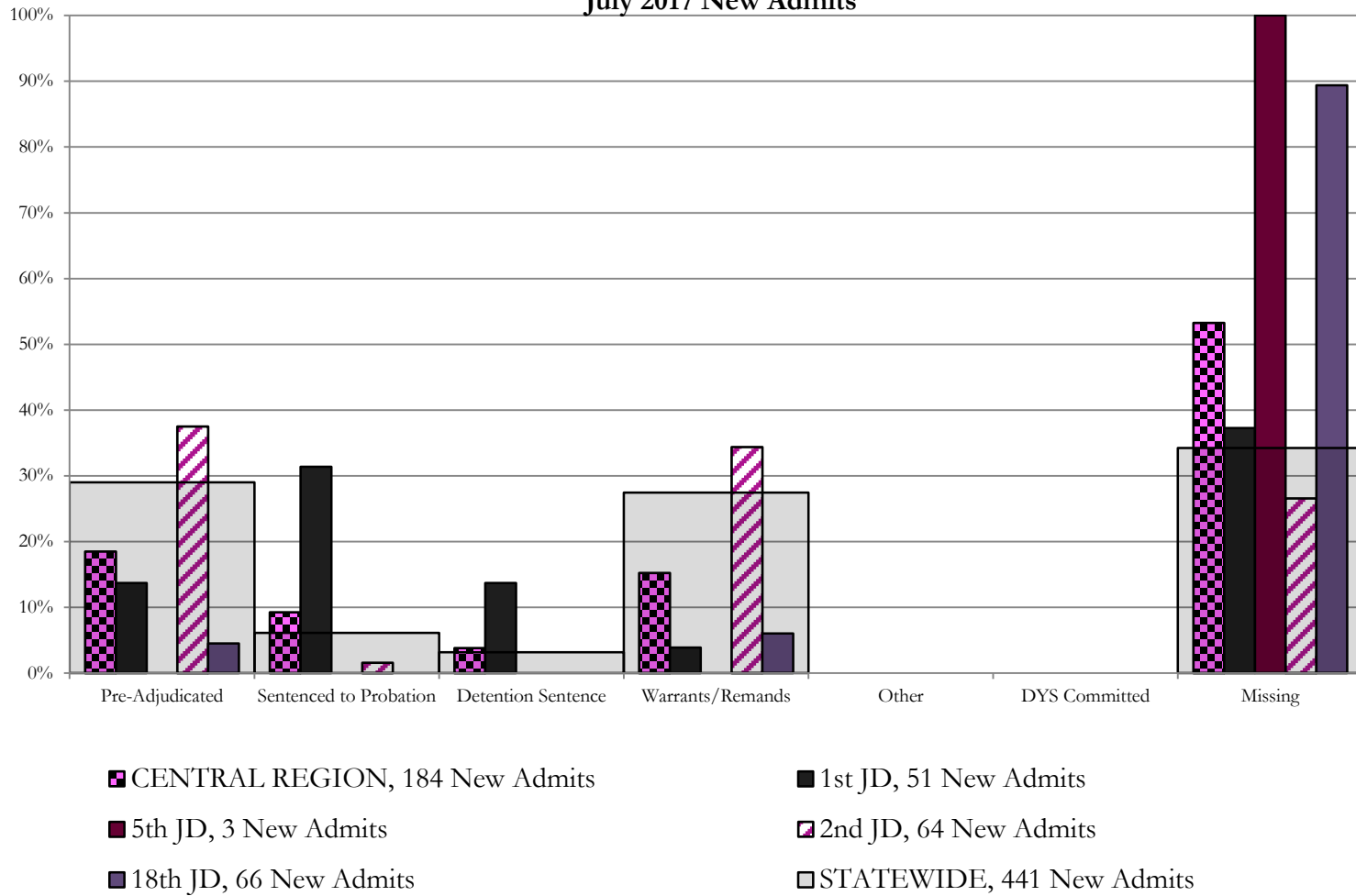
SB94 Reason Detained (RD) by Judicial District

Region	JD	Monthly New Admits	Pre-Adjudicated				Sentenced to Probation				Detention Sentence								Warrants/Remands				Other				DYS Committed		Missing							
			Felony		Misdemeanor		Technical Violator		New Charges		Probation Sentence		Detention Sentence		Valid Court Order (VCO) Truancy		Awaiting DSS (Social Services) Placement		Failure to Appear (FTA)		Failure to Comply (FTC)		Interstate Compact on Juveniles (ICJ) Hold		Immigration Hold		No Bond Hold		Out-of-Country Warrant		Institutional		Parole		Missing	
			#	%	#	%	#	%	#	%	#	%	#	%	#	%	#	%	#	%	#	%	#	%	#	%	#	%	#	%	#	%	#	%	#	%
<i>Central Region</i>																																				
	1st	51	1	2.0%	6	11.8%	16	31.4%	0	0.0%	0	0.0%	7	13.7%	0	0.0%	0	0.0%	2	3.9%	0	0.0%	0	0.0%	0	0.0%	0	0.0%	0	0.0%	0	0.0%	0	0.0%	19	37.3%
	2nd	64	23	35.9%	1	1.6%	1	1.6%	0	0.0%	0	0.0%	0	0.0%	0	0.0%	9	14.1%	13	20.3%	0	0.0%	0	0.0%	0	0.0%	0	0.0%	0	0.0%	0	0.0%	0	0.0%	17	26.6%
	5th	3	0	0.0%	0	0.0%	0	0.0%	0	0.0%	0	0.0%	0	0.0%	0	0.0%	0	0.0%	0	0.0%	0	0.0%	0	0.0%	0	0.0%	0	0.0%	0	0.0%	0	0.0%	0	0.0%	3	100.0%
	18th	66	3	4.5%	0	0.0%	0	0.0%	0	0.0%	0	0.0%	0	0.0%	0	0.0%	1	1.5%	3	4.5%	0	0.0%	0	0.0%	0	0.0%	0	0.0%	0	0.0%	0	0.0%	0	0.0%	59	89.4%
Central Total		184	27	15%	7	4%	17	9.2%	0	0.0%	0	0.0%	7	3.8%	0	0.0%	0	0.0%	12	7%	16	9%	0	0.0%	0	0.0%	0	0.0%	0	0.0%	0	0.0%	0	0.0%	98	53.3%
<i>Northeast Region</i>																																				
	8th	21	1	4.8%	5	23.8%	0	0.0%	0	0.0%	0	0.0%	1	4.8%	0	0.0%	0	0.0%	1	4.8%	13	61.9%	0	0.0%	0	0.0%	0	0.0%	0	0.0%	0	0.0%	0	0.0%	0	0.0%
	13th	7	2	28.6%	1	14.3%	1	14.3%	0	0.0%	0	0.0%	0	0.0%	3	42.9%	0	0.0%	0	0.0%	0	0.0%	0	0.0%	0	0.0%	0	0.0%	0	0.0%	0	0.0%	0	0.0%	0	0.0%
	17th	46	8	17.4%	1	2.2%	0	0.0%	0	0.0%	0	0.0%	0	0.0%	0	0.0%	0	0.0%	8	17.4%	16	34.8%	0	0.0%	0	0.0%	0	0.0%	0	0.0%	0	0.0%	0	0.0%	13	28.3%
	19th	33	10	30.3%	8	24.2%	3	9.1%	0	0.0%	0	0.0%	0	0.0%	0	0.0%	3	9.1%	8	24.2%	0	0.0%	0	0.0%	0	0.0%	0	0.0%	0	0.0%	0	0.0%	0	0.0%	1	3.0%
	20th	9	0	0.0%	0	0.0%	0	0.0%	0	0.0%	0	0.0%	1	11.1%	0	0.0%	1	11.1%	0	0.0%	0	0.0%	0	0.0%	0	0.0%	0	0.0%	0	0.0%	0	0.0%	0	0.0%	7	77.8%
Northeast Total		116	21	18%	15	13%	4	3.4%	0	0.0%	0	0.0%	2	1.7%	3	2.6%	1	0.9%	12	10.3%	37	32%	0	0.0%	0	0.0%	0	0.0%	0	0.0%	0	0.0%	0	0.0%	21	18%
<i>Southern Region</i>																																				
	3rd	5	3	60.0%	0	0.0%	1	20.0%	0	0.0%	0	0.0%	0	0.0%	0	0.0%	0	0.0%	0	0.0%	1	20.0%	0	0.0%	0	0.0%	0	0.0%	0	0.0%	0	0.0%	0	0.0%	0	0.0%
	4th	59	26	44.1%	1	1.7%	0	0.0%	1	1.7%	0	0.0%	0	0.0%	0	0.0%	0	0.0%	4	6.8%	21	35.6%	0	0.0%	0	0.0%	0	0.0%	0	0.0%	0	0.0%	0	0.0%	6	10.2%
	10th	30	2	6.7%	0	0.0%	1	3.3%	2	6.7%	0	0.0%	1	3.3%	0	0.0%	0	0.0%	1	3.3%	11	36.7%	0	0.0%	0	0.0%	0	0.0%	0	0.0%	0	0.0%	0	0.0%	12	40.0%
	11th	11	4	36.4%	1	9.1%	0	0.0%	0	0.0%	0	0.0%	0	0.0%	0	0.0%	0	0.0%	0	0.0%	0	0.0%	0	0.0%	0	0.0%	0	0.0%	0	0.0%	0	0.0%	6	54.5%		
	12th	4	3	75.0%	1	25.0%	0	0.0%	0	0.0%	0	0.0%	0	0.0%	0	0.0%	0	0.0%	0	0.0%	0	0.0%	0	0.0%	0	0.0%	0	0.0%	0	0.0%	0	0.0%	0	0.0%	0	0.0%
	15th	1	0	0.0%	0	0.0%	0	0.0%	0	0.0%	0	0.0%	0	0.0%	0	0.0%	0	0.0%	0	0.0%	0	0.0%	0	0.0%	0	0.0%	0	0.0%	0	0.0%	0	0.0%	1	100.0%		
	16th	1	0	0.0%	0	0.0%	0	0.0%	0	0.0%	0	0.0%	0	0.0%	0	0.0%	0	0.0%	0	0.0%	1	100%	0	0.0%	0	0.0%	0	0.0%	0	0.0%	0	0.0%	0	0.0%	0	0.0%
Southern Total		111	38	34%	3	3%	2	1.8%	3	2.7%	0	0.0%	1	0.9%	0	0.0%	0	0.0%	5	5%	34	31%	0	0.0%	0	0.0%	0	0.0%	0	0.0%	0	0.0%	0	0.0%	25	23%
<i>Western Region</i>																																				
	6th	3	0	0.0%	0	0.0%	0	0.0%	0	0.0%	0	0.0%	0	0.0%	0	0.0%	0	0.0%	0	0.0%	0	0.0%	0	0.0%	0	0.0%	0	0.0%	0	0.0%	0	0.0%	0	0.0%	3	100%
	7th	5	1	20.0%	2	40.0%	1	20.0%	0	0.0%	0	0.0%	0	0.0%	0	0.0%	0	0.0%	1	20.0%	0	0.0%	0	0.0%	0	0.0%	0	0.0%	0	0.0%	0	0.0%	0	0.0%	0	0.0%
	9th	4	2	50.0%	0	0.0%	0	0.0%	0	0.0%	0	0.0%	0	0.0%	0	0.0%	0	0.0%	0	0.0%	0	0.0%	0	0.0%	0	0.0%	0	0.0%	0	0.0%	0	0.0%	0	0.0%	2	50.0%
	14th	2	0	0.0%	0	0.0%	0	0.0%	0	0.0%	0	0.0%	0	0.0%	0	0.0%	0	0.0%	0	0.0%	0	0.0%	0	0.0%	0	0.0%	0	0.0%	0	0.0%	0	0.0%	2	100%		
	21st	16	9	56.3%	3	18.8%	0	0.0%	0	0.0%	0	0.0%	0	0.0%	0	0.0%	1	6.3%	3	18.8%	0	0.0%	0	0.0%	0	0.0%	0	0.0%	0	0.0%	0	0.0%	0	0.0%	0	0.0%
	22nd	0	0	0.0%	0	0.0%	0	0.0%	0	0.0%	0	0.0%	0	0.0%	0	0.0%	0	0.0%	0	0.0%	0	0.0%	0	0.0%	0	0.0%	0	0.0%	0	0.0%	0	0.0%	0	0.0%	0	0.0%
Western Total		30	12	40%	5	16.7%	1	3.3%	0	0.0%	0	0.0%	0	0.0%	0	0.0%	0	0.0%	1	3.3%	4	13%	0	0.0%	0	0.0%	0	0.0%	0	0.0%	0	0.0%	0	0.0%	7	23%
Individual RD Totals		441	98	22%	30	7%	24	5.4%	3	0.7%	0	0.0%	10	2.3%	3	0.7%	1	0.2%	30	7%	91	21%	0	0.0%	0	0.0%	0	0.0%	0	0.0%	0	0.0%	0	0.0%	151	34%
Statewide Totals		441	128	29.0%	27	6.1%	14	3.2%	0	0.0%	0	0.0%	14	3.2%	3	0.7%	1	0.2%	121	27.4%	0	0.0%	0	0.0%	0	0.0%	0	0.0%	0	0.0%	0	0.0%	151	34%		

Central Region

SB94 Reason Detained by Judicial District

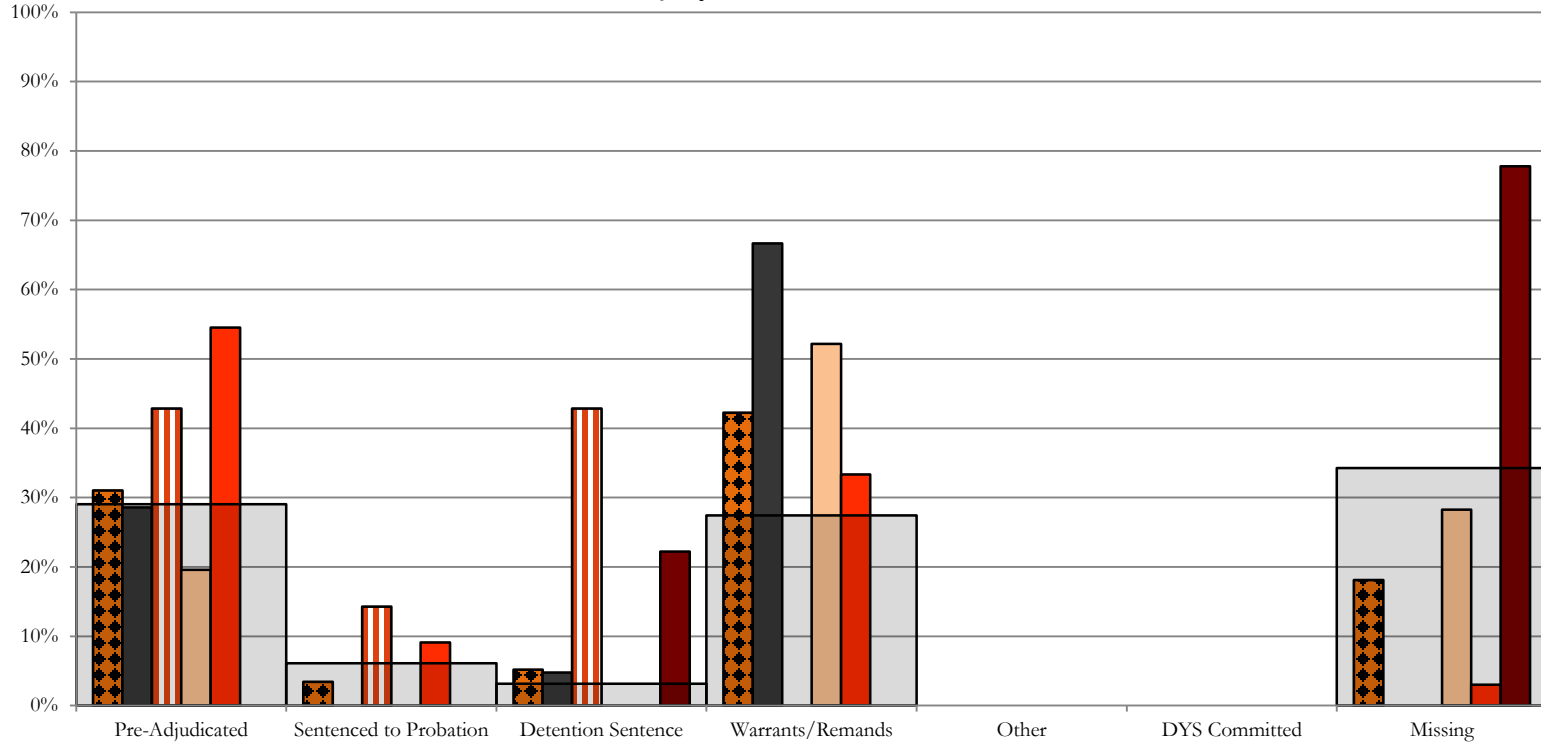
July 2017 New Admits



Northeast Region

SB94 Reason Detained by Judicial District

July 2017 New Admits



■ NORTHEAST REGION, 116 New Admits

■ 8th JD, 21 New Admits

■ 13th JD, 7 New Admits

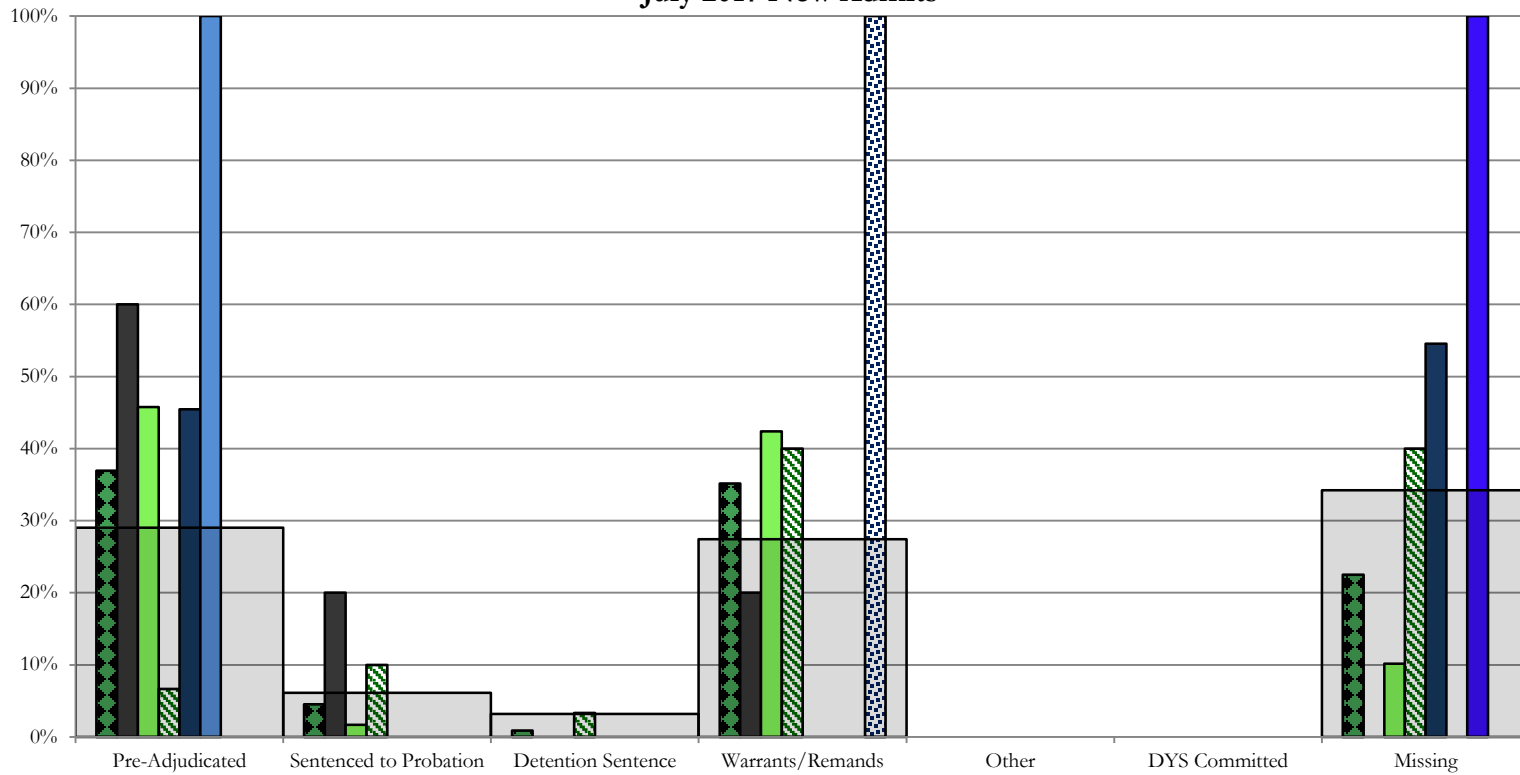
■ 17th JD, 46 New Admits

■ 19th JD, 33 New Admits

■ 20th JD, 9 New Admits

■ STATEWIDE, 441 New Admits

Southern Region SB94 Reason Detained by Judicial District July 2017 New Admits



■ SOUTHERN REGION, 111 New Admits

■ 4th JD, 59 New Admits

■ 11th JD, 11 New Admits

■ 15th JD, 1 New Admits

■ STATEWIDE, 441 New Admits

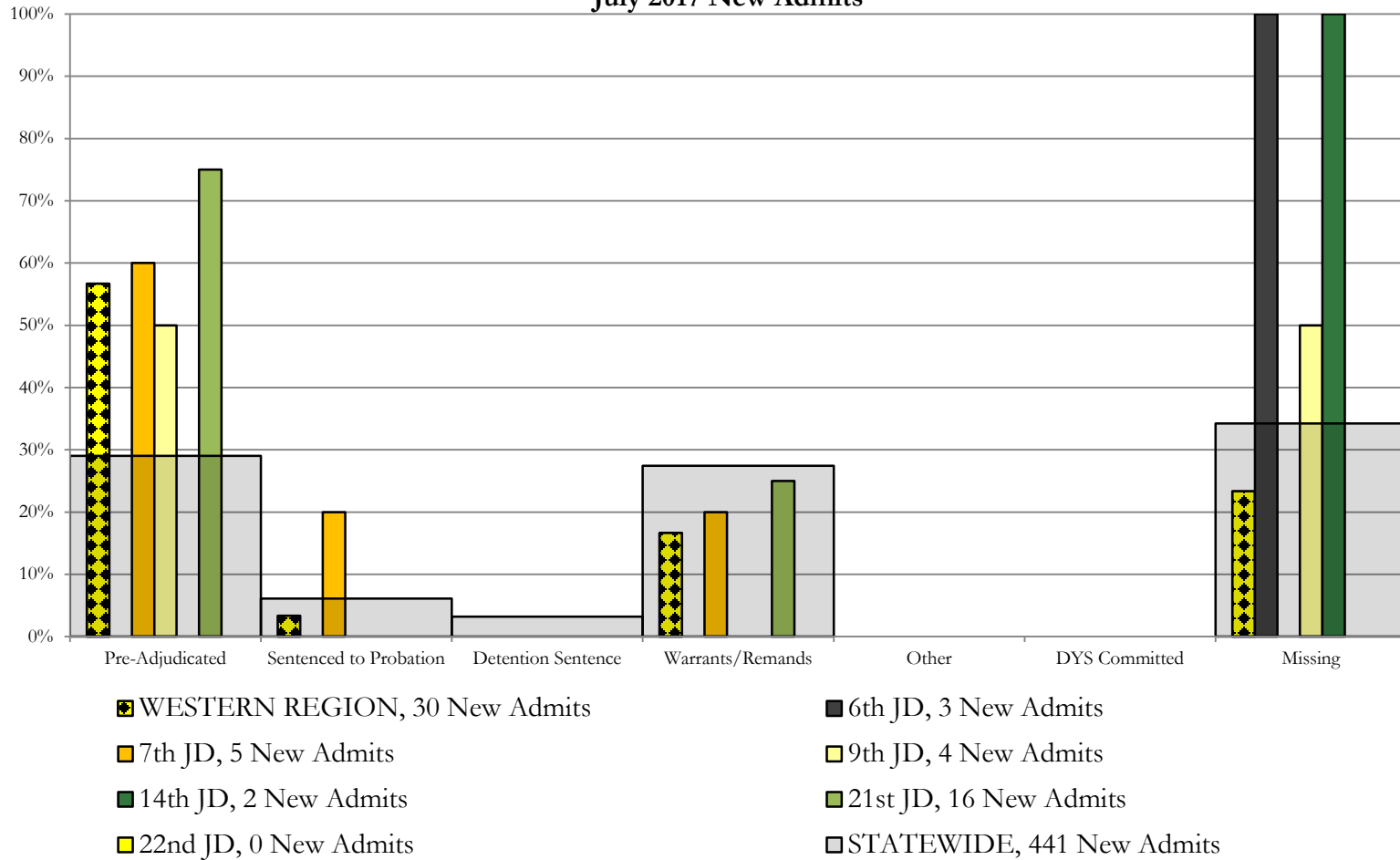
■ 3rd JD, 5 New Admits

■ 10th JD, 30 New Admits

■ 12th JD, 4 New Admits

■ 16th JD, 1 New Admits

Western Region SB94 Reason Detained by Judicial District July 2017 New Admits



July 2017 SB94 Supplemental Report

DYS Detention Maximum Youth Served by Judicial District¹

Region	JD	Detention Capacity	Detention ADP		Maximum Youth Served on a Single Day ^{2,3}			
			July 2017	YTD	July 2017		YTD	
					Number of Youth	% of Detention Capacity	Number of Youth	% of Detention Capacity
<i>Central Region</i>								
	1st	37	30.0	30.0	37	100.0%	37	100.0%
	2nd	64	43.3	43.3	52	81.3%	52	81.3%
	5th	4	0.4	0.4	2	50.0%	2	50.0%
	18th	61	34.7	34.7	39	63.9%	39	63.9%
Central Region		166	108.4	108.4	120	72.3%	120	72.3%
<i>Northeast Region</i>								
	8th	21	12.8	12.8	17	81.0%	17	81.0%
	13th	5	5.6	5.6	7	140.0%	7	140.0%
	17th	30	21.0	21.0	26	86.7%	26	86.7%
	19th	25	15.7	15.7	20	80.0%	20	80.0%
	20th	13	8.5	8.5	11	84.6%	11	84.6%
Northeast Region		94	63.6	63.6	70	74.5%	70	74.5%
<i>Southern Region</i>								
	3rd	2	1.0	1.0	2	100.0%	2	100.0%
	4th	51	45.4	45.4	51	100.0%	51	100.0%
	10th	13	11.9	11.9	15	115.4%	15	115.4%
	11th	8	3.0	3.0	6	75.0%	6	75.0%
	12th	4	3.0	3.0	4	100.0%	4	100.0%
	15th	2	0.4	0.4	1	50.0%	1	50.0%
	16th	3	0.1	0.1	1	33.3%	1	33.3%
Southern Region		83	64.8	64.8	78	94.0%	78	94.0%
<i>Western Region</i>								
	6th	5	5.6	5.6	7	140.0%	7	140.0%
	7th	7	1.5	1.5	3	42.9%	3	42.9%
	9th	6	2.4	2.4	4	66.7%	4	66.7%
	14th	3	0.1	0.1	1	33.3%	1	33.3%
	21st	14	16.2	16.2	18	128.6%	18	128.6%
	22nd	4	2.0	2.0	2	50.0%	2	50.0%
Western Region		39	27.8	27.8	29	74.4%	29	74.4%
<i>Missing JD or Multiple JDs</i>			2.7	2.7				
Statewide		382	267.3	267.3	278	72.8%	278	72.8%

¹ Maximum youth served is the highest number of youth in detention on a single day during the month or fiscal year.

² Regional figures are not the sum of judicial districts, but represent the maximum count on one day for the entire region.

³ State figures are not the sum of regional figures, but represent the maximum count on one day for the entire state.

July 2017 SB94 Supplemental Report

SB94 Community ADP by Judicial District

Region	JD	Committed		Diversion		ICJ		Municipal		Pre-Adjudicated		Sentenced		VCO		Total	
		July	YTD	July	YTD	July	YTD	July	YTD	July	YTD	July	YTD	July	YTD	July	YTD
<i>Central Region</i>																	
	1st	0.0	0.0	0.0	0.0	0.0	0.0	4.0	4.0	259.8	259.8	31.7	31.7	0.0	0.0	295.5	295.5
	2nd	6.0	6.0	0.0	0.0	1.0	1.0	0.0	0.0	232.4	232.4	59.7	59.7	0.0	0.0	299.2	299.2
	5th	0.0	0.0	13.0	13.0	0.0	0.0	0.0	0.0	7.6	7.6	31.2	31.2	0.0	0.0	51.8	51.8
	18th	2.0	2.0	4.6	4.6	0.0	0.0	0.0	0.0	301.7	301.7	41.3	41.3	8.0	8.0	357.6	357.6
Central Total		8.0	8.0	17.6	17.6	1.0	1.0	4.0	4.0	801.6	801.6	163.9	163.9	8.0	8.0	1004.0	1004.0
<i>Northeast Region</i>																	
	8th	0.0	0.0	2.0	2.0	0.0	0.0	0.0	0.0	55.6	55.6	55.6	55.6	0.0	0.0	113.1	113.1
	13th	0.0	0.0	0.0	0.0	0.0	0.0	0.0	0.0	14.3	14.3	3.0	3.0	6.7	6.7	23.9	23.9
	17th	1.3	1.3	0.0	0.0	0.0	0.0	1.0	1.0	197.8	197.8	65.4	65.4	0.0	0.0	265.5	265.5
	19th	0.2	0.2	0.0	0.0	0.0	0.0	0.0	0.0	85.5	85.5	48.2	48.2	0.0	0.0	133.9	133.9
	20th	0.0	0.0	11.0	11.0	0.0	0.0	0.0	0.0	88.7	88.7	40.0	40.0	98.0	98.0	237.7	237.7
Northeast Total		1.5	1.5	13.0	13.0	0.0	0.0	1.0	1.0	441.9	441.9	212.1	212.1	104.7	104.7	774.1	774.1
<i>Southern Region</i>																	
	3rd	0.0	0.0	0.0	0.0	0.0	0.0	0.0	0.0	10.7	10.7	7.0	7.0	0.0	0.0	17.7	17.7
	4th	7.0	7.0	0.0	0.0	0.0	0.0	53.4	53.4	117.2	117.2	44.7	44.7	0.0	0.0	222.3	222.3
	10th	1.2	1.2	0.0	0.0	1.0	1.0	2.4	2.4	9.7	9.7	14.9	14.9	3.5	3.5	32.7	32.7
	11th	1.0	1.0	0.3	0.3	0.0	0.0	7.5	7.5	6.5	6.5	21.0	21.0	1.0	1.0	37.3	37.3
	12th	0.0	0.0	1.0	1.0	0.0	0.0	1.0	1.0	8.1	8.1	1.0	1.0	0.0	0.0	11.1	11.1
	15th	0.0	0.0	0.0	0.0	0.0	0.0	0.0	0.0	4.2	4.2	2.5	2.5	0.0	0.0	6.7	6.7
	16th	0.0	0.0	0.0	0.0	0.0	0.0	0.0	0.0	8.5	8.5	4.2	4.2	21.0	21.0	33.8	33.8
Southern Total		9.2	9.2	1.3	1.3	1.0	1.0	64.3	64.3	164.8	164.8	95.3	95.3	25.5	25.5	361.6	361.6
<i>Western Region</i>																	
	6th	0.0	0.0	0.0	0.0	0.0	0.0	0.0	0.0	9.9	9.9	1.0	1.0	0.0	0.0	10.9	10.9
	7th	0.0	0.0	1.0	1.0	0.0	0.0	0.0	0.0	13.6	13.6	21.2	21.2	0.0	0.0	35.9	35.9
	9th	0.0	0.0	0.0	0.0	0.0	0.0	0.0	0.0	12.3	12.3	0.0	0.0	0.0	0.0	12.3	12.3
	14th	0.0	0.0	9.0	9.0	0.0	0.0	0.0	0.0	3.3	3.3	0.0	0.0	0.0	0.0	12.3	12.3
	21st	0.0	0.0	0.0	0.0	0.0	0.0	2.0	2.0	40.4	40.4	18.8	18.8	0.0	0.0	61.2	61.2
	22nd	0.0	0.0	0.0	0.0	0.0	0.0	0.0	0.0	11.2	11.2	3.0	3.0	0.0	0.0	14.2	14.2
Western Total		0.0	0.0	10.0	10.0	0.0	0.0	2.0	2.0	90.7	90.7	44.0	44.0	0.0	0.0	146.7	146.7
Statewide Total		18.7	18.7	41.9	41.9	2.0	2.0	71.3	71.3	1499.0	1499.0	515.4	515.4	138.2	138.2	2286.5	2286.5