

June 2017
FY 2016-2017
SB94 JDSAG SUPPLEMENTAL REPORT

Prepared by the Division of Youth Services (DYS)
Research and Evaluation Unit
July 26, 2017



COLORADO

**Office of Children,
Youth & Families**

Division of Youth Services

June 2017 SB94 Supplemental Report

DYS Commitment ADP & New Commitments by Judicial District

Region	JD ¹	2017 Population Estimates ²	ADP ³		New Commitments		
			June 2017	YTD	June 2017	YTD	YTD Rate ⁴
<i>Central Region</i>							
	1st	56,020	77.0	75.4	6	47	8.4
	2nd	62,634	99.8	111.0	3	33	5.3
	5th	10,162	10.6	9.8	0	5	4.9
	18th	121,363	69.7	66.6	4	45	3.7
Central Total		250,179	257.2	262.8	13	130	5.2
<i>Northeast Region</i>							
	8th	32,983	49.2	44.8	0	36	10.9
	13th	8,520	7.9	6.9	0	4	4.7
	17th	71,425	67.0	71.5	3	35	4.9
	19th	36,924	62.3	56.3	4	48	13.0
	20th	32,693	11.1	9.6	0	7	2.1
Northeast Total		182,545	197.4	189.1	7	130	7.1
<i>Southern Region</i>							
	3rd	1,871	1.0	1.0	0	1	5.3
	4th	81,725	80.0	80.6	2	48	5.9
	10th	17,869	34.2	38.1	4	20	11.2
	11th	7,196	5.9	4.9	2	4	5.6
	12th	5,241	7.7	8.4	0	3	5.7
	15th	2,102	3.8	1.8	1	4	19.0
	16th	2,749	-	-	0	0	0.0
Southern Total		118,753	132.6	134.9	9	80	6.7
<i>Western Region</i>							
	6th	6,491	8.0	7.4	0	4	6.2
	7th	10,788	9.6	8.1	1	6	5.6
	9th	9,477	6.0	5.1	0	3	3.2
	14th	5,635	2.0	2.4	0	0	0.0
	21st	15,968	39.3	37.8	2	25	15.7
	22nd	3,108	4.0	3.4	0	2	6.4
Western Total		51,467	68.9	64.1	3	40	7.8
Statewide Total		602,944	656.2	651.0	32	380	6.3

¹ JD represents the judicial district in which the client was committed. Regional totals are a sum of their respective judicial districts. Regional totals reported here may differ slightly from those reported in the Monthly Population Report, where region is defined by active caseloads.

² Source: DOLA 2017 Estimates.

³ Due to rounding, totals shown may not be an exact sum of the subtotals.

⁴ Per 10,000 youth in the population.

June 2017 SB94 Supplemental Report

DYS Detention ADP and New Detention Admissions by Judicial District

Region	JD	2017 Population Estimates ¹	ADP		New Admits		YTD New Admit Rate ²
			June 2017	YTD	June 2017	YTD	
<i>Central Region</i>							
	1st	56,020	28.1	24.2	67	704	125.7
	2nd	62,634	37.4	43.4	67	930	148.5
	5th	10,162	1.4	1.1	1	26	25.6
	18th	121,363	43.7	40.5	91	993	81.8
Central Total		250,179	110.6	109.2	226	2,653	106.0
<i>Northeast Region</i>							
	8th	32,983	10.0	10.7	24	285	86.4
	13th	8,520	7.3	2.9	2	69	81.0
	17th	71,425	21.9	21.6	45	479	67.1
	19th	36,924	11.0	18.8	31	507	137.3
	20th	32,693	6.2	6.7	18	197	60.3
Northeast Total		182,545	56.4	60.6	120	1,537	84.2
<i>Southern Region</i>							
	3rd	1,871	0.9	0.6	5	27	144.3
	4th	81,725	46.5	44.9	67	808	98.9
	10th	17,869	11.7	11.4	30	304	170.1
	11th	7,196	3.4	2.5	14	117	162.6
	12th	5,241	1.9	1.8	4	41	78.2
	15th	2,102	2.6	2.8	4	35	166.5
	16th	2,749	0.4	0.8	3	25	90.9
Southern Total		118,753	67.4	64.8	127	1,357	114.3
<i>Western Region</i>							
	6th	6,491	3.3	2.3	4	48	73.9
	7th	10,788	2.9	4.0	5	63	58.4
	9th	9,477	2.0	2.4	4	51	53.8
	14th	5,635	0.4	0.3	0	11	19.5
	21st	15,968	12.4	11.0	19	236	147.8
	22nd	3,108	1.7	0.9	4	25	80.4
Western Total		51,467	22.6	21.0	36	434	84.3
<i>Missing JD or Multiple JDs</i>			3.3	1.5			
Statewide Total		602,944	260.4	257.1	509	5,981	99.2

¹ Source: DOLA 2017 Estimates.

² Per 10,000 youth in the population.

June 2017 SB94 Supplemental Report

DYS Detention LOS by Judicial District				
Region	JD	YTD Detention Releases	YTD LOS (days)	LOS (days) Compared to State AVG
<i>Central Region</i>				
	1st	683	12.1	-3.2
	2nd	936	17.0	1.7
	5th	27	14.8	-0.4
	18th	969	14.3	-1.0
Central Total		2,615	14.7	-0.6
<i>Northeast Region</i>				
	8th	282	12.9	-2.4
	13th	68	11.7	-3.6
	17th	473	15.5	0.2
	19th	511	13.1	-2.2
	20th	193	10.5	-4.8
Northeast Total		1,527	13.4	-1.9
<i>Southern Region</i>				
	3rd	27	8.4	-6.9
	4th	795	18.4	3.1
	10th	303	13.0	-2.2
	11th	113	7.3	-7.9
	12th	40	15.7	0.5
	15th	38	25.9	10.6
	16th	25	11.2	-4.1
Southern Total		1,341	16.0	0.8
<i>Western Region</i>				
	6th	46	15.7	0.4
	7th	60	17.9	2.6
	9th	50	16.3	1.0
	14th	11	9.5	-5.8
	21st	223	15.1	-0.1
	22nd	24	10.1	-5.2
Western Total		414	15.3	0.0
Statewide Total		5,943	15.3	-

June 2017 SB 94 Supplemental Report

YTD DYS Detention ADP & Ethnicity by Judicial District

Region	JD	Anglo-American		African-American		Hispanic / Latino		Native-American		Asian-American		Other		TOTAL	
		ADP	%	ADP	%	ADP	%	ADP	%	ADP	%	ADP	%	ADP	%
Central															
	1st	13.8	57.1%	1.4	6.0%	8.0	33.2%	0.4	1.6%	0.3	1.1%	0.3	1.1%	24.2	100%
	2nd	6.2	14.4%	16.9	38.9%	19.8	45.8%	0.2	0.5%	0.0	0.1%	0.2	0.4%	43.4	100%
	5th	0.4	34.5%	0.1	4.6%	0.7	60.9%	0.0	0.0%	0.0	0.0%	0.0	0.0%	1.1	100%
	18th	14.9	36.8%	15.3	37.8%	8.8	21.7%	0.6	1.5%	0.4	1.0%	0.5	1.1%	40.5	100%
Central Total		35.4	35.7%	33.7	21.8%	37.4	40.4%	1.2	0.9%	0.7	0.5%	0.9	0.7%	109.2	100%
Northeast															
	8th	5.6	52.4%	1.3	12.6%	3.3	30.9%	0.1	1.2%	0.1	0.5%	0.3	2.4%	10.7	100%
	13th	1.8	61.8%	0.0	0.2%	1.1	36.7%	0.0	0.3%	0.0	0.0%	0.0	1.1%	2.9	100%
	17th	6.5	30.3%	3.2	15.0%	11.5	53.6%	0.0	0.2%	0.2	0.9%	0.0	0.0%	21.5	100%
	19th	6.5	34.4%	1.0	5.2%	11.3	60.4%	0.0	0.0%	0.0	0.0%	0.0	0.0%	18.8	100%
	20th	4.0	60.2%	0.4	5.6%	2.2	32.3%	0.0	0.0%	0.1	1.7%	0.0	0.2%	6.7	100%
Northeast Total		24.4	47.8%	5.9	7.7%	29.4	42.8%	0.2	0.3%	0.4	0.6%	0.3	0.7%	60.6	100%
Southern															
	3rd	0.1	14.8%	0.0	5.0%	0.4	69.3%	0.0	0.0%	0.0	0.0%	0.1	10.8%	0.6	100%
	4th	16.6	37.0%	13.8	30.6%	13.3	29.7%	0.5	1.2%	0.1	0.2%	0.5	1.2%	44.9	100%
	10th	2.8	24.6%	0.8	6.9%	7.3	64.2%	0.1	0.9%	0.0	0.0%	0.4	3.3%	11.4	100%
	11th	1.9	75.0%	0.4	17.3%	0.2	7.7%	0.0	0.0%	0.0	0.0%	0.0	0.0%	2.5	100%
	12th	0.6	32.2%	0.0	1.1%	1.1	65.6%	0.0	0.0%	0.0	0.0%	0.0	1.2%	1.8	100%
	15th	1.6	55.7%	0.0	0.4%	1.2	43.4%	0.0	0.0%	0.0	0.0%	0.0	0.5%	2.8	100%
	16th	0.5	55.7%	0.3	32.8%	0.1	11.6%	0.0	0.0%	0.0	0.0%	0.0	0.0%	0.8	100%
Southern Total		24.0	42.1%	15.3	13.4%	23.8	41.6%	0.6	0.3%	0.1	0.0%	1.0	2.4%	64.8	100%
Western															
	6th	1.1	48.1%	0.1	3.7%	0.7	28.4%	0.2	7.3%	0.0	0.0%	0.3	12.4%	2.3	100%
	7th	3.0	73.6%	0.0	0.3%	0.6	15.3%	0.4	10.8%	0.0	0.0%	0.0	0.0%	4.0	100%
	9th	1.7	71.1%	0.0	0.7%	0.7	27.8%	0.0	0.3%	0.0	0.0%	0.0	0.0%	2.4	100%
	14th	0.3	96.1%	0.0	0.0%	0.0	3.9%	0.0	0.0%	0.0	0.0%	0.0	0.0%	0.3	100%
	21st	8.9	80.2%	0.2	2.1%	1.7	15.3%	0.1	0.7%	0.0	0.3%	0.1	1.3%	11.0	100%
	22nd	0.7	79.7%	0.0	0.1%	0.1	14.2%	0.1	6.0%	0.0	0.0%	0.0	0.0%	0.9	100%
Western Total		15.7	74.8%	0.4	1.2%	3.8	17.5%	0.7	4.2%	0.0	0.1%	0.4	2.3%	21.0	100%
Missing JD Data		0.1		0.1		1.3		0.0		0.0		0.0		1.5	
Statewide Total		99.5	38.7%	55.3	21.5%	95.7	37.2%	2.8	1.1%	1.2	0.5%	2.7	1.0%	257.1	100%

June 2017 SB94 JDSAG Supplemental Report

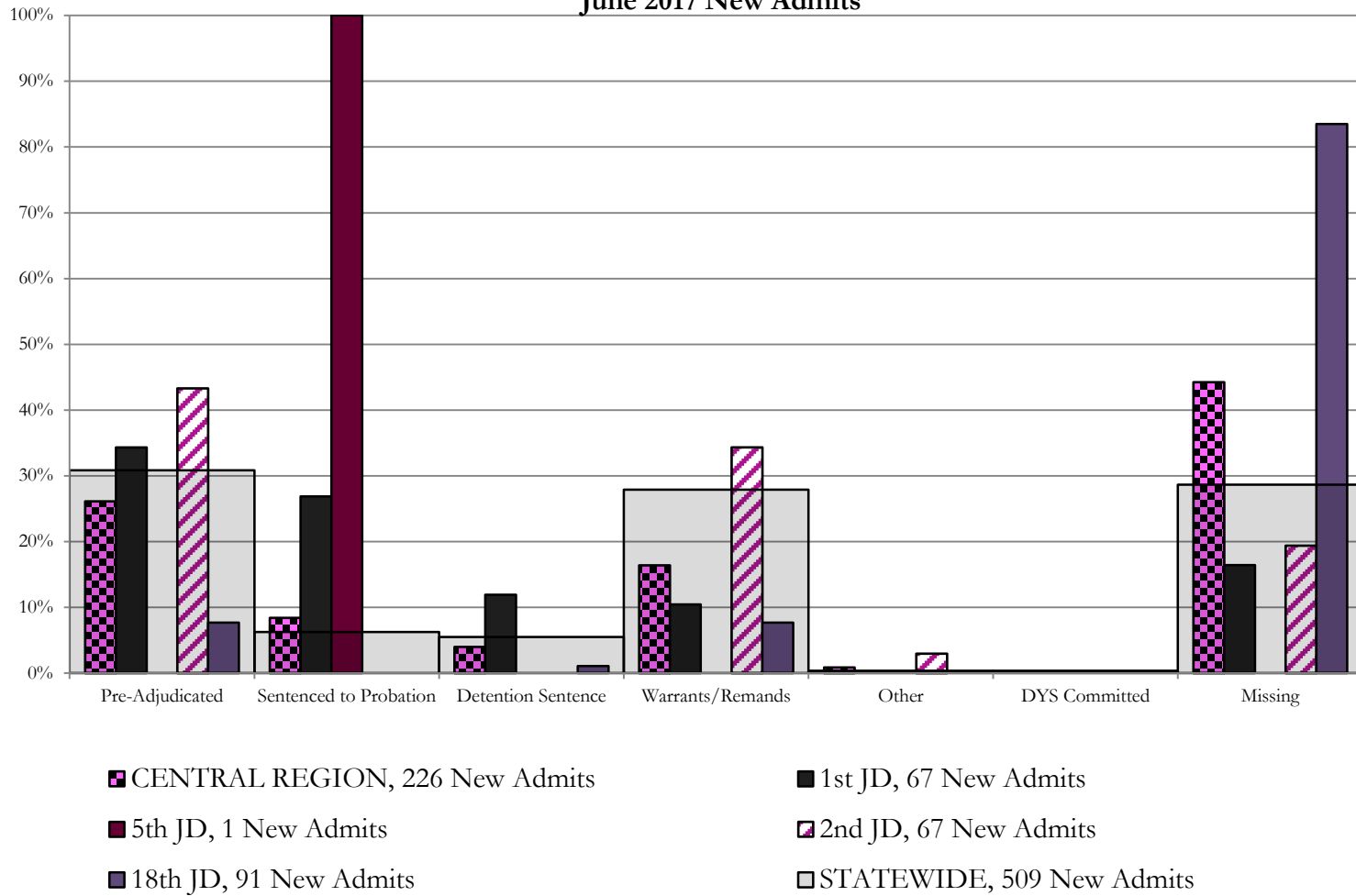
SB94 Reason Detained (RD) by Judicial District

Region	JD	Pre-Adjudicated				Sentenced to Probation				Detention Sentence								Warrants/Remands				Other				DYS Committed		Missing										
		Felony		Misdemeanor		Technical Violator		New Charges		Probation Sentence		Detention Sentence		Valid Court Order (VCO) Truancy		Awaiting DSS (Social Services) Placement		Failure to Appear (FTA)		Failure to Comply (FTC)		Interstate Compact on Juveniles (ICJ) Hold		Immigration Hold		No Bond Hold		Out-of-Country Warrant		Institutional		Parole		Missing				
		#	%	#	%	#	%	#	%	#	%	#	%	#	%	#	%	#	%	#	%	#	%	#	%	#	%	#	%	#	%	#	%	#	%			
<i>Central Region</i>																																						
	1st	67	17	25.4%	6	9.0%	18	26.9%	0	0.0%	0	0.0%	8	11.9%	0	0.0%	0	0.0%	3	4.5%	4	6.0%	0	0.0%	0	0.0%	0	0.0%	0	0.0%	0	0.0%	0	0.0%	0	0.0%	11	16.4%
	2nd	67	21	31.3%	8	11.9%	0	0.0%	0	0.0%	0	0.0%	0	0.0%	0	0.0%	6	9.0%	17	25.4%	2	3.0%	0	0.0%	0	0.0%	0	0.0%	0	0.0%	0	0.0%	0	0.0%	0	0.0%	13	19.4%
	5th	1	0	0.0%	0	0.0%	1	100.0%	0	0.0%	0	0.0%	0	0.0%	0	0.0%	0	0.0%	0	0.0%	0	0.0%	0	0.0%	0	0.0%	0	0.0%	0	0.0%	0	0.0%	0	0.0%	0	0.0%	0	0.0%
	18th	91	5	5.5%	2	2.2%	0	0.0%	0	0.0%	0	0.0%	1	1.1%	0	0.0%	0	0.0%	1	1.1%	6	6.6%	0	0.0%	0	0.0%	0	0.0%	0	0.0%	0	0.0%	0	0.0%	0	0.0%	76	83.5%
Central Total		226	43	19%	16	7%	19	8.4%	0	0.0%	0	0.0%	9	4.0%	0	0.0%	0	0.0%	10	4%	27	12%	2	0.9%	0	0.0%	0	0.0%	0	0.0%	0	0.0%	0	0.0%	0	0.0%	100	44.2%
<i>Northeast Region</i>																																						
	8th	24	5	20.8%	0	0.0%	0	0.0%	0	0.0%	0	0.0%	5	20.8%	0	0.0%	0	0.0%	5	20.8%	7	29.2%	0	0.0%	0	0.0%	0	0.0%	0	0.0%	0	0.0%	0	0.0%	0	0.0%	2	8.3%
	13th	2	0	0.0%	0	0.0%	0	0.0%	0	0.0%	0	0.0%	0	0.0%	0	0.0%	1	50.0%	0	0.0%	0	0.0%	0	0.0%	0	0.0%	0	0.0%	0	0.0%	0	0.0%	0	0.0%	0	0.0%	1	50.0%
	17th	45	10	22.2%	0	0.0%	0	0.0%	0	0.0%	0	0.0%	0	0.0%	0	0.0%	0	0.0%	9	20.0%	15	33.3%	0	0.0%	0	0.0%	0	0.0%	0	0.0%	0	0.0%	0	0.0%	0	0.0%	11	24.4%
	19th	31	8	25.8%	3	9.7%	4	12.9%	0	0.0%	0	0.0%	0	0.0%	1	3.2%	0	0.0%	4	12.9%	11	35.5%	0	0.0%	0	0.0%	0	0.0%	0	0.0%	0	0.0%	0	0.0%	0	0.0%	0	0.0%
	20th	18	0	0.0%	0	0.0%	3	16.7%	0	0.0%	0	0.0%	1	5.6%	0	0.0%	5	27.8%	0	0.0%	6	33.3%	0	0.0%	0	0.0%	0	0.0%	0	0.0%	0	0.0%	0	0.0%	0	0.0%	3	16.7%
Northeast Total		120	23	19%	3	3%	7	5.8%	0	0.0%	0	0.0%	6	5.0%	1	0.8%	5	4.2%	19	15.8%	39	33%	0	0.0%	0	0.0%	0	0.0%	0	0.0%	0	0.0%	0	0.0%	0	0.0%	17	14%
<i>Southern Region</i>																																						
	3rd	5	0	0.0%	3	0%	1	20.0%	0	0.0%	0	0.0%	0	0.0%	0	0.0%	0	0.0%	0	0.0%	1	20.0%	0	0.0%	0	0.0%	0	0.0%	0	0.0%	0	0.0%	0	0.0%	0	0.0%	0	0.0%
	4th	67	22	32.8%	8	11.9%	0	0.0%	2	3.0%	0	0.0%	2	3.0%	0	0.0%	0	0.0%	6	9.0%	14	20.9%	0	0.0%	0	0.0%	0	0.0%	2	3.0%	0	0.0%	0	0.0%	11	16.4%		
	10th	30	5	16.7%	1	3.3%	0	0.0%	0	0.0%	0	0.0%	1	3.3%	0	0.0%	0	0.0%	3	10.0%	14	46.7%	0	0.0%	0	0.0%	0	0.0%	0	0.0%	0	0.0%	0	0.0%	0	0.0%	6	20.0%
	11th	14	5	35.7%	0	0.0%	0	0.0%	0	0.0%	0	0.0%	0	0.0%	0	0.0%	0	0.0%	2	14.3%	0	0.0%	0	0.0%	0	0.0%	0	0.0%	0	0.0%	0	0.0%	0	0.0%	7	50.0%		
	12th	4	2	50.0%	1	25.0%	0	0.0%	0	0.0%	0	0.0%	0	0.0%	0	0.0%	0	0.0%	1	25.0%	0	0.0%	0	0.0%	0	0.0%	0	0.0%	0	0.0%	0	0.0%	0	0.0%	0	0.0%		
	15th	4	1	25.0%	0	0.0%	0	0.0%	0	0.0%	0	0.0%	1	25.0%	0	0.0%	0	0.0%	0	0.0%	0	0.0%	0	0.0%	0	0.0%	0	0.0%	0	0.0%	0	0.0%	0	0.0%	2	50.0%		
	16th	3	3	100.0%	0	0.0%	0	0.0%	0	0.0%	0	0.0%	0	0.0%	0	0.0%	0	0.0%	0	0.0%	0	0.0%	0	0.0%	0	0.0%	0	0.0%	0	0.0%	0	0.0%	0	0.0%	0	0.0%		
Southern Total		127	38	30%	13	10%	1	0.8%	2	1.6%	0	0.0%	4	3.1%	0	0.0%	0	0.0%	9	7%	32	25%	0	0.0%	0	0.0%	0	0.0%	0	0.0%	2	1.6%	0	0.0%	26	20%		
<i>Western Region</i>																																						
	6th	4	4	100.0%	0	0.0%	0	0.0%	0	0.0%	0	0.0%	0	0.0%	0	0.0%	0	0.0%	0	0.0%	0	0.0%	0	0.0%	0	0.0%	0	0.0%	0	0.0%	0	0.0%	0	0.0%	0	0.0%		
	7th	5	1	20.0%	0	0.0%	3	60.0%	0	0.0%	0	0.0%	1	20.0%	0	0.0%	0	0.0%	0	0.0%	0	0.0%	0	0.0%	0	0.0%	0	0.0%	0	0.0%	0	0.0%	0	0.0%	0	0.0%		
	9th	4	2	50.0%	1	25.0%	0	0.0%	0	0.0%	0	0.0%	1	25.0%	0	0.0%	0	0.0%	0	0.0%	0	0.0%	0	0.0%	0	0.0%	0	0.0%	0	0.0%	0	0.0%	0	0.0%	0	0.0%		
	14th	0	0	0.0%	0	0.0%	0	0.0%	0	0.0%	0	0.0%	0	0.0%	0	0.0%	0	0.0%	0	0.0%	0	0.0%	0	0.0%	0	0.0%	0	0.0%	0	0.0%	0	0.0%	0	0.0%				
	21st	19	7	36.8%	3	15.8%	0	0.0%	0	0.0%	0	0.0%	1	5.3%	0	0.0%	0	0.0%	6	31.6%	0	0.0%	0	0.0%	0	0.0%	0	0.0%	0	0.0%	0	0.0%	0	0.0%	2	10.5%		
	22nd	4	2	50.0%	1	25.0%	0	0.0%	0	0.0%	0	0.0%	0	0.0%	0	0.0%	0	0.0%	0	0.0%	0	0.0%	0	0.0%	0	0.0%	0	0.0%	0	0.0%	0	0.0%	0	0.0%	1	25.0%		
Western Total		36	16	44%	5	13.9%	3	8.3%	0	0.0%	0	0.0%	3	8.3%	0	0.0%	0	0.0%	0	0.0%	6	17%	0	0.0%	0	0.0%	0	0.0%	0	0.0%	0	0.0%	0	0.0%	3	8%		
Individual RD Totals		509	120	24%	37	7%	30	5.9%	2	0.4%	0	0.0%	22	4.3%	1	0.2%	5	1.0%	38	7%	104	20%	2	0.4%	0	0.0%	0	0.0%	0	0.0%	0	0.0%	2	0.4%	0	0.0%	146	29%
Statewide Totals		509	157	30.8%	32	6.3%	28	5.5%	2	0.4%	0	0.0%	28	5.5%	1	0.2%	5	1.0%	142	27.9%	104	20%	2	0.4%	0	0.0%	0	0.0%	0	0.0%	2	0.4%	0	0.0%	146	29%		

Central Region

SB94 Reason Detained by Judicial District

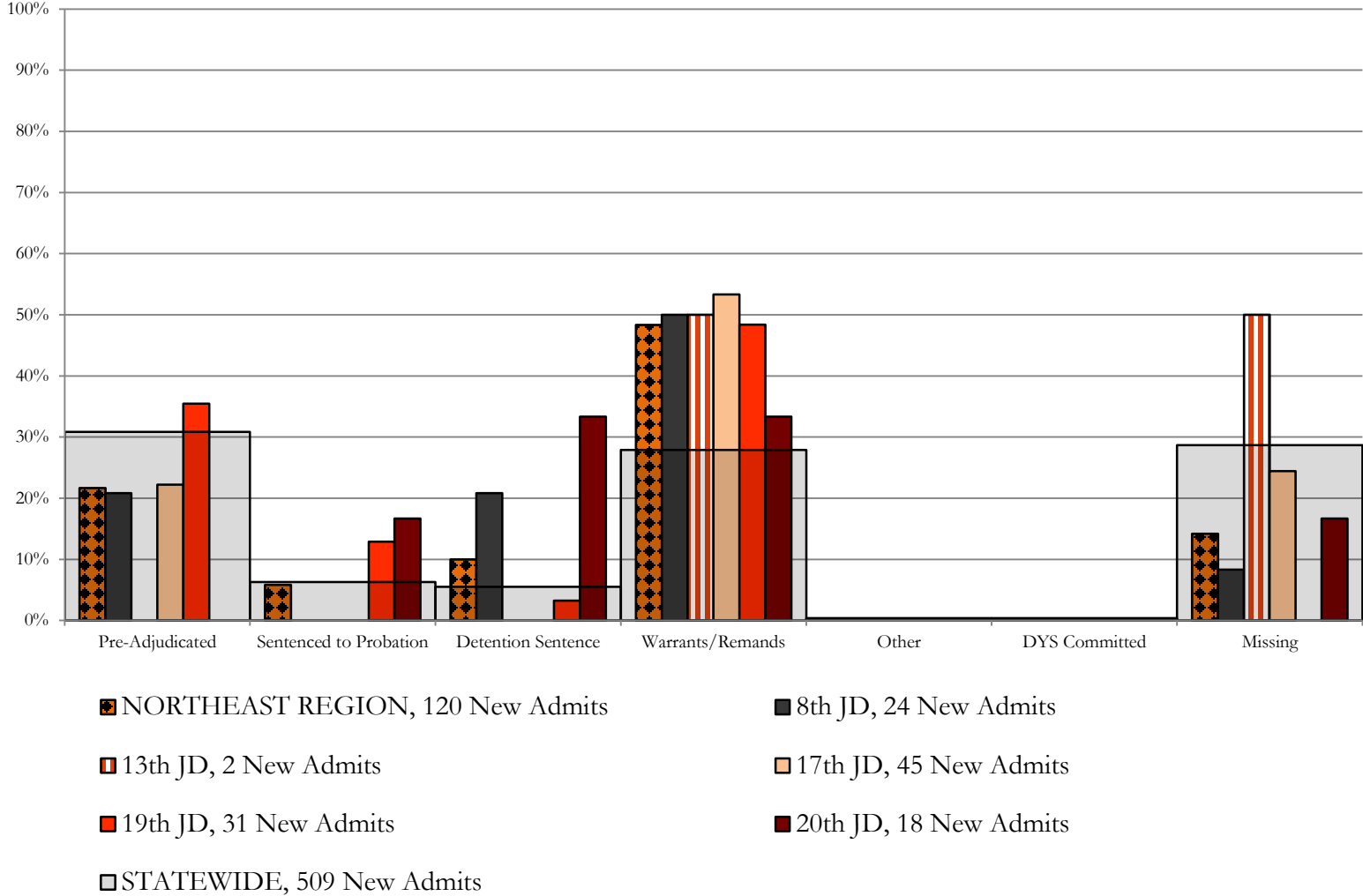
June 2017 New Admits



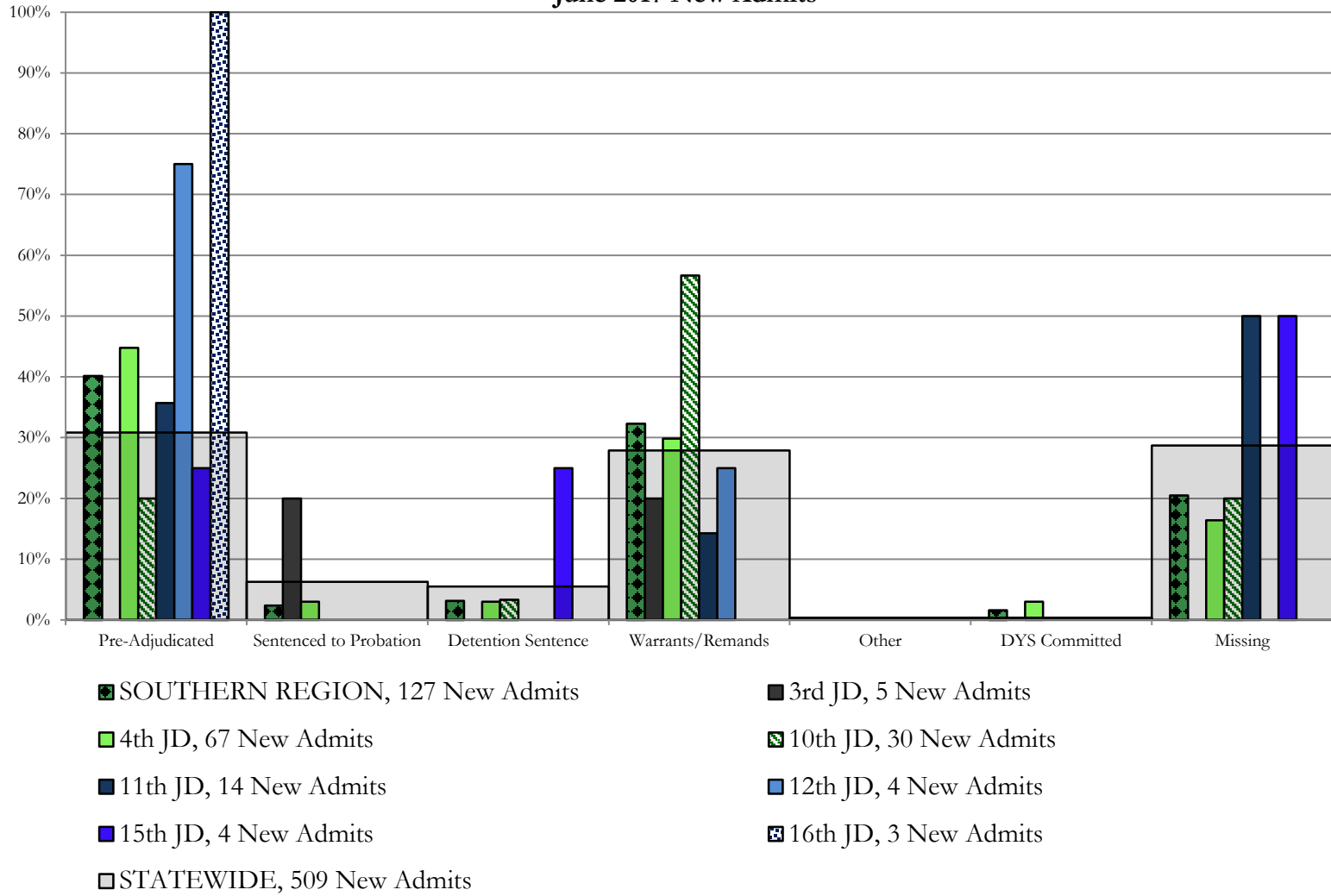
Northeast Region

SB94 Reason Detained by Judicial District

June 2017 New Admits



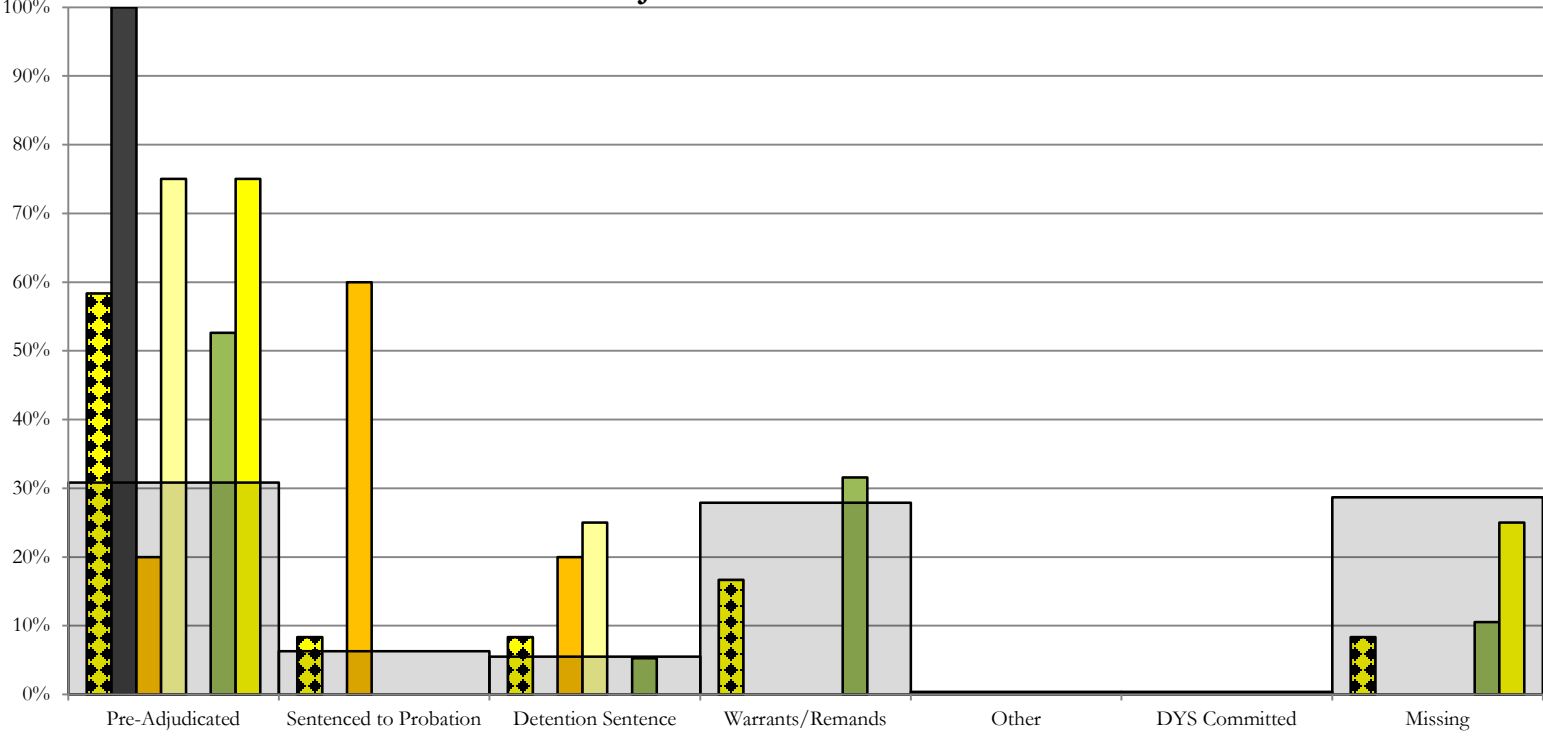
Southern Region SB94 Reason Detained by Judicial District June 2017 New Admits



Western Region

SB94 Reason Detained by Judicial District

June 2017 New Admits



- WESTERN REGION, 36 New Admits**
- 6th JD, 4 New Admits**
- 7th JD, 5 New Admits**
- 9th JD, 4 New Admits**
- 14th JD, 0 New Admits**
- 21st JD, 19 New Admits**
- STATEWIDE, 509 New Admits**
- 22nd JD, 4 New Admits**

June 2017 SB94 JDSAG Supplemental Report

SB94 Reason Detained (RD) by Judicial District Year to Date

Region	JD	Year to Date New Admits	Pre-Adjudicated				Sentenced to Probation				Detention Sentence								Warrants/Remands				Other				DYS Committed				Missing					
			Felony		Misdemeanor		Technical Violator		New Charges		Probation Sentence		Detention Sentence		Valid Court Order (VCO) Truancy		Awaiting DSS (Social Services) Placement		Failure to Appear (FTA)		Failure to Comply (FTC)		Interstate Compact on Juveniles (ICJ) Hold		Immigration Hold		Institutional		Parole		Missing					
			#	%	#	%	#	%	#	%	#	%	#	%	#	%	#	%	#	%	#	%	#	%	#	%	#	%	#	%	#	%				
<i>Central Region</i>																																				
	1st	704	158	22.4%	95	13.5%	88	12.5%	11	1.6%	118	16.8%	0	0.0%	0	0.0%	0	0.0%	0	0.0%	61	8.7%	133	18.9%	1	0.1%	0	0.0%	0	0.0%	0	0.0%	0	0.0%	39	5.5%
	2nd	930	337	36.2%	78	8.4%	6	0.6%	4	0.4%	1	0.1%	0	0.0%	0	0.0%	0	0.0%	0	0.0%	112	12.0%	200	21.5%	14	1.5%	0	0.0%	2	0.2%	0	0.0%	0	0.0%	176	18.9%
	5th	26	4	15.4%	1	3.8%	4	15.4%	0	0.0%	4	15.4%	0	0.0%	0	0.0%	0	0.0%	0	0.0%	3	11.5%	5	19.2%	1	3.8%	0	0.0%	0	0.0%	0	0.0%	0	0.0%	4	15.4%
	18th	993	179	18.0%	208	20.9%	0	0.0%	1	0.1%	14	1.4%	0	0.0%	0	0.0%	0	0.0%	0	0.0%	86	8.7%	244	24.6%	6	0.6%	0	0.0%	0	0.0%	0	0.0%	0	0.0%	255	25.7%
Central Total		2,653	678	25.6%	382	14.4%	98	3.7%	16	0.6%	137	5.2%	0	0.0%	0	0.0%	0	0.0%	0	0.0%	262	9.9%	582	21.9%	22	0.8%	0	0.0%	2	0.1%	0	0.0%	474	17.9%		
<i>Northeast Region</i>																																				
	8th	285	38	13.3%	36	12.6%	0	0.0%	0	0.0%	22	7.7%	0	0.0%	0	0.0%	0	0.0%	0	0.0%	26	9.1%	157	55.1%	0	0.0%	0	0.0%	0	0.0%	0	0.0%	0	0.0%	6	2.1%
	13th	69	23	33.3%	11	15.9%	6	8.7%	0	0.0%	1	1.4%	0	0.0%	3	4.3%	0	0.0%	0	0.0%	5	7.2%	17	24.6%	0	0.0%	0	0.0%	0	0.0%	0	0.0%	0	0.0%	3	4.3%
	17th	479	129	26.9%	38	7.9%	3	0.6%	0	0.0%	0	0.0%	0	0.0%	0	0.0%	0	0.0%	0	0.0%	60	12.5%	182	38.0%	0	0.0%	0	0.0%	1	0.2%	0	0.0%	0	0.0%	66	13.8%
	19th	507	122	24.1%	81	16.0%	105	20.7%	0	0.0%	13	2.6%	0	0.0%	4	0.8%	1	0.2%	33	6.5%	144	28.4%	0	0.0%	0	0.0%	1	0.2%	1	0.2%	1	0.2%	2	0.4%		
	20th	197	40	20.3%	29	14.7%	20	10.2%	0	0.0%	50	25.4%	0	0.0%	0	0.0%	0	0.0%	2	1.0%	39	19.8%	0	0.0%	0	0.0%	0	0.0%	0	0.0%	0	0.0%	10	5.1%		
Northeast Total		1,537	352	22.9%	195	12.7%	134	8.7%	0	0.0%	86	5.6%	0	0.0%	7	0.5%	8	0.5%	126	8.2%	539	35.1%	0	0.0%	0	0.0%	2	0.1%	1	0.1%	87	5.7%				
<i>Southern Region</i>																																				
	3rd	27	4	14.8%	7	25.9%	7	25.9%	0	0.0%	0	0.0%	0	0.0%	0	0.0%	0	0.0%	4	14.8%	5	18.5%	0	0.0%	0	0.0%	0	0.0%	0	0.0%	0	0.0%	0	0.0%		
	4th	808	256	31.7%	85	10.5%	3	0.4%	47	5.8%	5	0.6%	0	0.0%	5	0.6%	1	0.1%	73	9.0%	276	34.2%	0	0.0%	0	0.0%	13	1.6%	2	0.2%	42	5.2%				
	10th	304	57	18.8%	18	5.9%	1	0.3%	1	0.3%	13	4.3%	0	0.0%	1	0.3%	0	0.0%	81	26.6%	120	39.5%	1	0.3%	0	0.0%	2	0.7%	0	0.0%	9	3.0%				
	11th	117	12	10.3%	10	8.5%	0	0.0%	0	0.0%	1	0.9%	0	0.0%	0	0.0%	1	0.9%	18	15.4%	29	24.8%	0	0.0%	0	0.0%	1	0.9%	0	0.0%	45	38.5%				
	12th	41	17	41.5%	8	19.5%	1	2.4%	1	2.4%	0	0.0%	0	0.0%	0	0.0%	1	2.4%	6	14.6%	5	12.2%	0	0.0%	0	0.0%	0	0.0%	0	0.0%	2	4.9%				
	15th	35	5	14.3%	1	2.9%	8	22.9%	0	0.0%	6	17.1%	0	0.0%	0	0.0%	0	0.0%	1	2.9%	7	20.0%	1	2.9%	0	0.0%	0	0.0%	0	0.0%	6	17.1%				
	16th	25	13	52.0%	5	20.0%	0	0.0%	0	0.0%	4	16.0%	0	0.0%	0	0.0%	0	0.0%	1	4.0%	1	4.0%	0	0.0%	0	0.0%	0	0.0%	0	0.0%	1	4.0%				
Southern Total		1,357	364	26.8%	134	9.9%	20	1.5%	49	3.6%	29	2.1%	0	0.0%	6	0.4%	3	0.2%	184	13.6%	443	32.6%	2	0.1%	0	0.0%	16	1.2%	2	0.1%	105	7.7%				
<i>Western Region</i>																																				
	6th	48	19	39.6%	10	20.8%	8	16.7%	0	0.0%	0	0.0%	0	0.0%	0	0.0%	0	0.0%	1	2.1%	4	8.3%	0	0.0%	0	0.0%	0	0.0%	0	0.0%	0	0.0%	6	12.5%		
	7th	63	23	36.5%	5	7.9%	3	4.8%	0	0.0%	7	11.1%	0	0.0%	0	0.0%	1	1.6%	6	9.5%	18	28.6%	0	0.0%	0	0.0%	0	0.0%	0	0.0%	0	0.0%	0	0.0%		
	9th	51	14	27.5%	8	15.7%	14	27.5%	0	0.0%	2	3.9%	0	0.0%	0	0.0%	0	0.0%	1	2.0%	4	7.8%	0	0.0%	0	0.0%	0	0.0%	0	0.0%	8	15.7%				
	14th	11	3	27.3%	5	45.5%	0	0.0%	0	0.0%	0	0.0%	0	0.0%	0	0.0%	0	0.0%	0	0.0%	2	18.2%	0	0.0%	0	0.0%	0	0.0%	0	0.0%	1	9.1%				
	21st	236	74	31.4%	22	9.3%	1	0.4%	0	0.0%	17	7.2%	0	0.0%	0	0.0%	0	0.0%	12	5.1%	102	43.2%	0	0.0%	0	0.0%	0	0.0%	0	0.0%	8	3.4%				
	22nd	25	5	20.0%	7	28.0%	3	12.0%	0	0.0%	0	0.0%	0	0.0%	0	0.0%	0	0.0%	3	12.0%	2	8.0%	0	0.0%	0	0.0%	0	0.0%	0	0.0%	5	20.0%				
Western Total		434	138	31.8%	57	13.1%	29	6.7%	0	0.0%	26	6.0%	0	0.0%	0	0.0%	1	0.2%	23	5.3%	132	30.4%	0	0.0%	0	0.0%	0	0.0%	0	0.0%	28	6.5%				
Individual RD Totals		5,981	1532	25.6%	768	12.8%	281	4.7%	65	1.1%	278	4.6%	0	0.0%	13	0.1%	12	0.1%	595	9.9%	1696	28.4%	24	0.4%	0	0.0%	20	0.3%	3	0.1%	694	11.6%				
Statewide Totals		5,981	2,300	38.5%	346	5.8%					303								2291	38.3%			24				23				694	11.6%				

June 2017 SB94 Supplemental Report

DYC Detention Maximum Youth Served by Judicial District¹

Region	JD	Detention Capacity	Detention ADP		Maximum Youth Served on a Single Day ^{2,3}			
			June 2017	YTD	June 2017		YTD	
					Number of Youth	% of Detention Capacity	Number of Youth	% of Detention Capacity
<i>Central Region</i>								
	1st	37	28.1	24.2	33	89.2%	38	102.7%
	2nd	64	37.4	43.4	46	71.9%	59	92.2%
	5th	4	1.4	1.1	2	50.0%	4	100.0%
	18th	61	43.7	40.5	51	83.6%	59	96.7%
Central Region		166	110.6	109.2	126	75.9%	135	81.3%
<i>Northeast Region</i>								
	8th	21	10.0	10.7	15	71.4%	19	90.5%
	13th	5	7.3	2.9	10	200.0%	11	220.0%
	17th	30	21.9	21.6	27	90.0%	30	100.0%
	19th	25	11.0	18.8	17	68.0%	32	128.0%
	20th	13	6.2	6.7	10	76.9%	13	100.0%
Northeast Region		94	56.4	60.6	64	68.1%	76	80.9%
<i>Southern Region</i>								
	3rd	2	0.9	0.6	4	200.0%	4	200.0%
	4th	51	46.5	44.9	53	103.9%	53	103.9%
	10th	13	11.7	11.4	15	115.4%	19	146.2%
	11th	8	3.4	2.5	6	75.0%	6	75.0%
	12th	4	1.9	1.8	3	75.0%	4	100.0%
	15th	2	2.6	2.8	5	250.0%	6	300.0%
	16th	3	0.4	0.8	3	100.0%	4	133.3%
Southern Region		83	67.4	64.8	80	96.4%	80	96.4%
<i>Western Region</i>								
	6th	5	3.3	2.3	5	100.0%	7	140.0%
	7th	7	2.9	4.0	5	71.4%	9	128.6%
	9th	6	2.0	2.4	3	50.0%	5	83.3%
	14th	3	0.4	0.3	1	33.3%	2	66.7%
	21st	14	12.4	11.0	15	107.1%	18	128.6%
	22nd	4	1.7	0.9	3	75.0%	4	100.0%
Western Region		39	22.6	21.0	27	69.2%	31	79.5%
<i>Missing JD or Multiple JDs</i>			3.3	1.5				
Statewide		382	260.4	257.1	284	74.3%	299	78.3%

¹ Maximum youth served is the highest number of youth in detention on a single day during the month or fiscal year.

² Regional figures are not the sum of judicial districts, but represent the maximum count on one day for the entire region.

³ State figures are not the sum of regional figures, but represent the maximum count on one day for the entire state.

June 2017 SB94 Supplemental Report

SB94 Community ADP by Judicial District

Region	JD	Committed		Diversion		ICJ		Municipal		Pre-Adjudicated		Sentenced		VCO		Total	
		June	YTD	June	YTD	June	YTD	June	YTD	June	YTD	June	YTD	June	YTD	June	YTD
<i>Central Region</i>																	
	1st	0.0	0.4	0.1	0.0	0.5	0.0	2.1	3.4	273.4	227.2	29.3	18.1	0.0	0.2	305.4	249.3
	2nd	6.0	5.3	0.0	0.0	1.1	0.6	0.0	0.1	210.6	185.8	58.5	42.2	0.0	0.0	276.2	233.9
	5th	0.0	0.0	14.2	11.3	0.0	0.0	0.0	0.0	7.0	12.2	29.7	26.5	0.0	0.0	50.9	50.0
	18th	1.9	1.3	4.0	5.9	0.0	0.2	0.0	0.6	328.2	302.1	48.4	45.1	8.0	12.4	390.5	367.5
Central Total		7.9	7.0	18.3	17.2	1.6	0.9	2.1	4.0	819.2	727.2	165.9	131.8	8.0	12.6	1023.0	900.7
<i>Northeast Region</i>																	
	8th	0.0	0.0	1.0	1.3	0.0	0.0	0.0	0.0	48.6	42.7	46.7	36.3	0.0	0.0	96.3	80.3
	13th	0.0	0.3	0.0	0.0	0.0	0.0	0.0	0.0	15.7	11.6	2.6	8.3	8.0	6.1	26.3	26.3
	17th	1.0	0.8	0.0	0.0	0.0	0.0	1.0	1.0	195.0	156.0	67.8	62.2	0.0	0.0	264.8	220.0
	19th	0.3	0.3	0.0	0.2	0.0	0.0	0.0	0.0	72.1	55.9	38.4	35.9	0.0	0.8	110.7	93.1
	20th	0.0	0.5	11.0	8.8	0.0	0.0	0.0	0.0	78.7	54.0	41.9	48.1	100.6	59.9	232.3	171.3
Northeast Total		1.3	1.8	12.0	10.3	0.0	0.0	1.0	1.0	410.1	320.2	197.4	190.9	108.6	66.8	730.4	591.0
<i>Southern Region</i>																	
	3rd	0.0	0.0	0.0	0.0	0.0	0.0	0.0	0.0	9.7	8.7	5.4	6.2	0.0	0.7	15.2	15.6
	4th	6.5	1.8	0.0	0.0	0.0	0.0	56.0	52.7	116.4	130.5	34.3	40.4	0.0	0.6	213.2	225.9
	10th	0.0	0.0	0.0	0.0	1.0	0.2	8.0	20.5	19.9	16.0	11.3	14.4	6.2	3.9	46.5	55.0
	11th	1.0	0.3	0.0	0.0	0.0	0.0	9.9	3.4	13.4	8.6	25.8	23.4	3.0	1.2	53.1	36.9
	12th	0.0	0.0	2.3	2.8	0.0	0.0	3.8	4.7	8.5	4.6	3.1	2.9	0.0	0.0	17.7	15.0
	15th	0.0	0.0	0.0	0.0	0.0	0.0	0.0	0.0	3.9	1.4	4.1	10.7	0.0	0.0	8.1	12.0
	16th	0.0	0.0	0.0	0.0	0.0	0.0	0.0	0.0	9.7	6.0	4.3	6.4	21.0	20.1	35.0	32.5
Southern Total		7.5	2.1	2.3	2.8	1.0	0.2	77.7	81.4	181.5	175.8	88.5	104.3	30.2	26.4	388.7	393.0
<i>Western Region</i>																	
	6th	0.0	0.0	0.0	0.0	0.0	0.0	0.0	0.0	10.3	11.9	1.0	0.3	0.0	0.0	11.3	12.3
	7th	0.0	0.1	1.0	3.4	0.0	0.0	0.0	0.6	15.8	13.2	21.2	24.1	0.0	0.0	37.9	41.5
	9th	0.0	0.0	0.0	0.0	0.0	0.0	0.3	0.5	12.6	8.6	1.1	4.6	0.0	0.0	14.0	13.8
	14th	0.0	0.0	10.6	12.3	0.0	0.0	0.0	0.0	4.7	3.3	0.4	1.5	0.0	0.0	15.7	17.1
	21st	0.0	0.0	0.0	0.2	0.0	0.0	2.0	2.0	39.0	34.7	19.5	29.4	0.0	0.0	60.6	66.3
	22nd	0.0	0.0	0.0	0.0	0.0	0.0	0.0	0.0	10.4	7.9	2.1	0.9	0.0	0.0	12.5	8.8
Western Total		0.0	0.1	11.6	16.0	0.0	0.0	2.3	3.1	92.8	79.6	45.3	60.9	0.0	0.0	151.9	159.7
Statewide Total		16.7	11.1	44.2	46.2	2.6	1.1	83.0	89.4	1503.7	1302.8	497.0	487.9	146.8	105.8	2294.0	2044.3