

May 2017
FY 2016-2017
SB94 JDSAG SUPPLEMENTAL REPORT

Prepared by the Division of Youth Services (DYS)
Research and Evaluation Unit
June 26th, 2017



COLORADO

**Office of Children,
Youth & Families**

Division of Youth Services

May 2017 SB94 Supplemental Report

DYS Commitment ADP & New Commitments by Judicial District

Region	JD ¹	2017 Population Estimates ²	ADP ³		New Commitments		
			May 2017	YTD	May 2017	YTD	YTD Rate ⁴
<i>Central Region</i>							
	1st	56,020	80.0	75.4	5	41	7.3
	2nd	62,634	100.6	112.0	1	30	4.8
	5th	10,162	11.5	9.7	1	5	4.9
	18th	121,363	69.3	66.3	2	41	3.4
Central Total		250,179	261.4	263.4	9	117	4.7
<i>Northeast Region</i>							
	8th	32,983	47.0	44.3	2	36	10.9
	13th	8,520	8.0	6.9	0	4	4.7
	17th	71,425	68.7	71.9	1	31	4.3
	19th	36,924	64.2	55.7	4	44	11.9
	20th	32,693	10.0	9.4	0	7	2.1
Northeast Total		182,545	198.0	188.1	7	122	6.7
<i>Southern Region</i>							
	3rd	1,871	1.0	1.1	0	1	5.3
	4th	81,725	81.7	80.5	7	45	5.5
	10th	17,869	36.3	38.5	1	16	9.0
	11th	7,196	6.0	4.9	0	2	2.8
	12th	5,241	7.4	8.4	0	3	5.7
	15th	2,102	3.0	1.6	0	3	14.3
	16th	2,749	0.0	0.0	0	0	0.0
Southern Total		118,753	135.5	134.9	8	70	5.9
<i>Western Region</i>							
	6th	6,491	8.0	7.3	0	4	6.2
	7th	10,788	8.5	8.0	2	5	4.6
	9th	9,477	6.0	5.0	0	3	3.2
	14th	5,635	2.0	2.5	0	0	0.0
	21st	15,968	37.7	37.7	1	23	14.4
	22nd	3,108	4.0	3.3	0	2	6.4
Western Total		51,467	66.2	63.7	3	37	7.2
Statewide Total		602,944	661.0	650.1	27	346	5.7

¹ JD represents the judicial district in which the client was committed. Regional totals are a sum of their respective judicial districts. Regional totals reported here may differ slightly from those reported in the Monthly Population Report, where region is defined by active caseloads.

² Source: DOLA 2017 Estimates.

³ Due to rounding, totals shown may not be an exact sum of the subtotals.

⁴ Per 10,000 youth in the population.

May 2017 SB94 Supplemental Report

DYS Detention ADP and New Detention Admissions by Judicial District

Region	JD	2017 Population Estimates ¹	ADP		New Admits		YTD New Admit Rate ²
			May 2017	YTD	May 2017	YTD	
<i>Central Region</i>							
	1st	56,020	34.0	24.0	59	639	114.1
	2nd	62,634	39.3	43.9	77	863	137.8
	5th	10,162	0.7	1.1	2	25	24.6
	18th	121,363	38.8	40.2	81	902	74.3
Central Total		250,179	112.8	109.2	219	2,429	97.1
<i>Northeast Region</i>							
	8th	32,983	10.8	10.7	22	261	79.1
	13th	8,520	7.6	2.5	15	67	78.6
	17th	71,425	18.7	21.5	29	434	60.8
	19th	36,924	10.8	19.5	30	477	129.2
	20th	32,693	4.7	6.7	14	179	54.8
Northeast Total		182,545	52.6	61.0	110	1,418	77.7
<i>Southern Region</i>							
	3rd	1,871	0.8	0.6	3	22	117.6
	4th	81,725	45.4	44.9	50	741	90.7
	10th	17,869	10.9	11.4	31	274	153.3
	11th	7,196	0.4	2.4	8	103	143.1
	12th	5,241	2.7	1.7	3	37	70.6
	15th	2,102	3.9	2.8	2	31	147.5
	16th	2,749	0.8	0.9	1	22	80.0
Southern Total		118,753	65.0	64.7	98	1,230	103.6
<i>Western Region</i>							
	6th	6,491	1.9	2.2	4	44	67.8
	7th	10,788	3.3	4.1	7	58	53.8
	9th	9,477	2.1	2.5	7	47	49.6
	14th	5,635	0.5	0.3	2	11	19.5
	21st	15,968	10.7	10.9	20	217	135.9
	22nd	3,108	1.3	0.8	4	21	67.6
Western Total		51,467	19.8	20.9	44	398	77.3
<i>Missing JD or Multiple JDs</i>			2.3	1.3			
Statewide Total		602,944	252.5	257.1	471	5,475	90.8

¹ Source: DOLA 2017 Estimates.

² Per 10,000 youth in the population.

May 2017 SB94 Supplemental Report

DYS Detention LOS by Judicial District

Region	JD	YTD Detention Releases	YTD LOS (days)	LOS (days) Compared to State AVG
<i>Central Region</i>				
	1st	617	11.4	-3.8
	2nd	876	16.8	1.7
	5th	25	14.3	-0.8
	18th	875	13.9	-1.2
Central Total		2,393	14.4	-0.8
<i>Northeast Region</i>				
	8th	262	12.7	-2.5
	13th	61	10.3	-4.9
	17th	427	15.1	0.0
	19th	482	13.3	-1.8
	20th	178	10.7	-4.5
Northeast Total		1,410	13.3	-1.9
<i>Southern Region</i>				
	3rd	22	9.3	-5.9
	4th	727	18.4	3.2
	10th	274	13.5	-1.7
	11th	99	7.6	-7.5
	12th	36	15.7	0.5
	15th	31	26.1	10.9
	16th	22	12.4	-2.8
Southern Total		1,211	16.2	1.1
<i>Western Region</i>				
	6th	45	15.7	0.5
	7th	54	18.5	3.3
	9th	45	17.2	2.1
	14th	10	8.1	-7.0
	21st	213	15.2	0.1
	22nd	21	11.5	-3.7
Western Total		388	15.6	0.4
Statewide Total		5,438	15.2	-

May 2017
SB94 JDSAG Supplemental Report

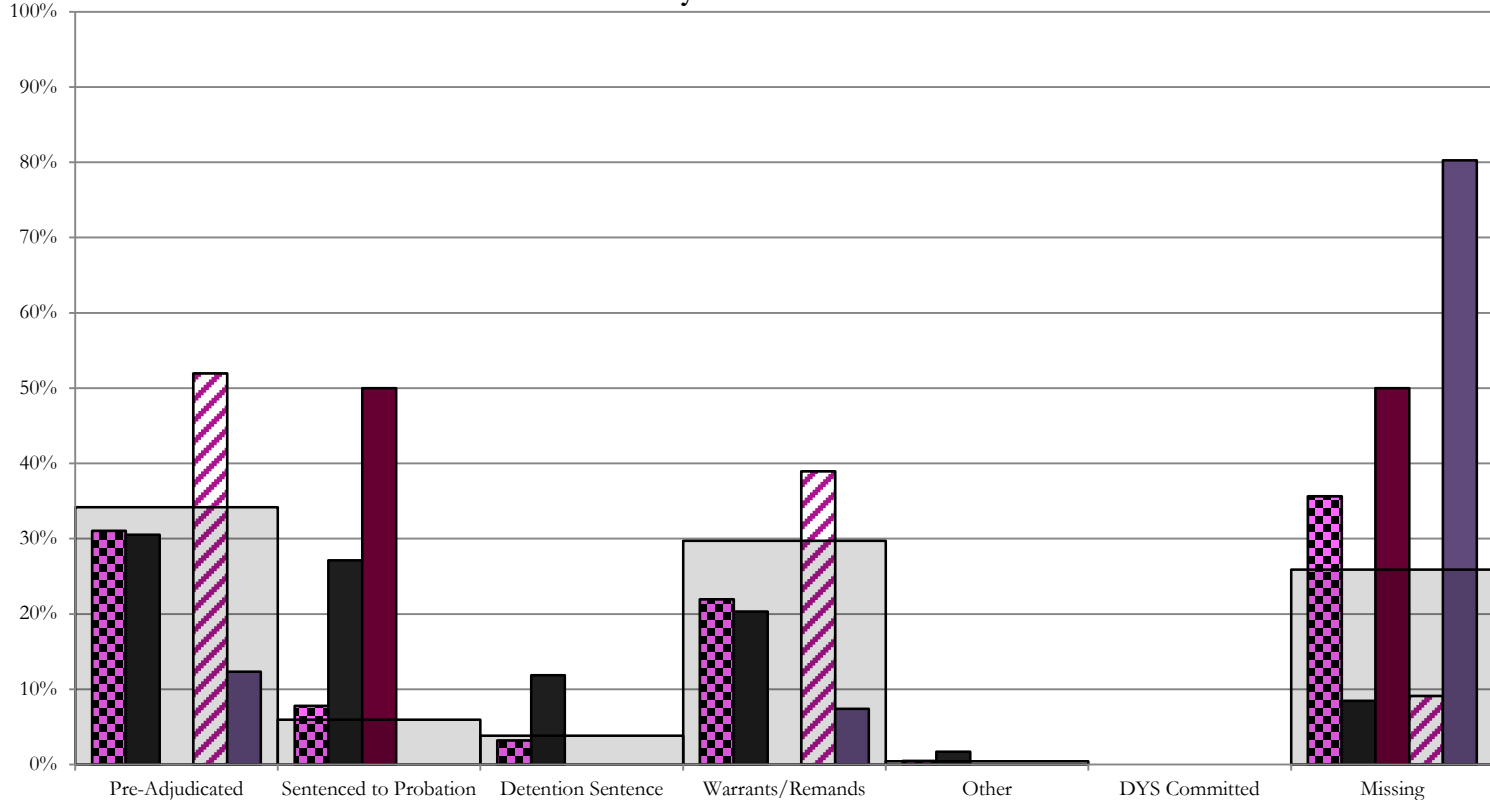
SB94 Reason Detained (RD) by Judicial District

Region	JD	Monthly New Admits	Pre-Adjudicated				Sentenced to Probation				Detention Sentence								Warrants/Remands				Other						DYS Committed		Missing							
			Felony		Misdemeanor		Technical Violator		New Charges		Probation Sentence		Detention Sentence		Valid Court Order (VCO) Truancy		Awaiting DSS (Social Services) Placement		Failure to Appear (FTA)		Failure to Comply (FTC)		Interstate Compact on Juveniles (ICJ) Hold		Immigration Hold		No Bond Hold		Out-of-Country Warrant		Institutional		Parole		Missing			
			#	%	#	%	#	%	#	%	#	%	#	%	#	%	#	%	#	%	#	%	#	%	#	%	#	%	#	%	#	%	#	%	#	%		
Central Region																																						
	1st	59	16	27.1%	2	3.4%	14	23.7%	2	3.4%	0	0.0%	7	11.9%	0	0.0%	0	0.0%	5	8.5%	7	11.9%	1	1.7%	0	0.0%	0	0.0%	0	0.0%	0	0.0%	0	0.0%	5	8.5%		
	2nd	77	31	40.3%	9	11.7%	0	0.0%	0	0.0%	0	0.0%	0	0.0%	0	0.0%	0	0.0%	8	10.4%	22	28.6%	0	0.0%	0	0.0%	0	0.0%	0	0.0%	0	0.0%	0	0.0%	7	9.1%		
	5th	2	0	0.0%	0	0.0%	1	50.0%	0	0.0%	0	0.0%	0	0.0%	0	0.0%	0	0.0%	0	0.0%	0	0.0%	0	0.0%	0	0.0%	0	0.0%	0	0.0%	0	0.0%	0	0.0%	1	50.0%		
	18th	81	6	7.4%	4	4.9%	0	0.0%	0	0.0%	0	0.0%	0	0.0%	0	0.0%	0	0.0%	1	1.2%	5	6.2%	0	0.0%	0	0.0%	0	0.0%	0	0.0%	0	0.0%	0	0.0%	65	80.2%		
Central Total		219	53	24%	15	7%	15	6.8%	2	0.9%	0	0.0%	7	3.2%	0	0.0%	0	0.0%	14	6%	34	16%	1	0.5%	0	0.0%	0	0.0%	0	0.0%	0	0.0%	0	0.0%	78	35.6%		
Northeast Region																																						
	8th	22	6	27.3%	2	9.1%	0	0.0%	0	0.0%	0	0.0%	2	9.1%	0	0.0%	0	0.0%	2	9.1%	10	45.5%	0	0.0%	0	0.0%	0	0.0%	0	0.0%	0	0.0%	0	0.0%	0	0.0%	0	0.0%
	13th	15	2	13.3%	3	20.0%	2	13.3%	0	0.0%	0	0.0%	1	6.7%	1	6.7%	0	0.0%	0	0.0%	2	13.3%	0	0.0%	0	0.0%	0	0.0%	0	0.0%	0	0.0%	0	0.0%	4	26.7%		
	17th	29	10	34.5%	2	6.9%	0	0.0%	0	0.0%	0	0.0%	0	0.0%	0	0.0%	0	0.0%	3	10.3%	11	37.9%	0	0.0%	0	0.0%	0	0.0%	0	0.0%	0	0.0%	0	0.0%	3	10.3%		
	19th	30	10	33.3%	5	16.7%	5	16.7%	0	0.0%	0	0.0%	1	3.3%	1	3.3%	0	0.0%	3	10.0%	5	16.7%	0	0.0%	0	0.0%	0	0.0%	0	0.0%	0	0.0%	0	0.0%	0	0.0%		
	20th	14	0	0.0%	0	0.0%	0	0.0%	0	0.0%	0	0.0%	0	0.0%	0	0.0%	0	0.0%	0	0.0%	0	0.0%	0	0.0%	0	0.0%	0	0.0%	0	0.0%	0	0.0%	0	0.0%	14	100.0%		
Northeast Total		110	28	25%	12	11%	7	6.4%	0	0.0%	0	0.0%	4	3.6%	2	1.8%	0	0.0%	8	7.3%	28	25%	0	0.0%	0	0.0%	0	0.0%	0	0.0%	0	0.0%	0	0.0%	21	19%		
Southern Region																																						
	3rd	3	0	0.0%	1	33.3%	1	33.3%	0	0.0%	0	0.0%	0	0.0%	0	0.0%	0	0.0%	1	33.3%	0	0.0%	0	0.0%	0	0.0%	0	0.0%	0	0.0%	0	0.0%	0	0.0%	0	0.0%		
	4th	50	14	28.0%	5	10.0%	0	0.0%	2	4.0%	0	0.0%	0	0.0%	0	0.0%	0	0.0%	8	16.0%	17	34.0%	0	0.0%	0	0.0%	0	0.0%	0	0.0%	0	0.0%	0	0.0%	0	0.0%		
	10th	31	6	19.4%	3	9.7%	0	0.0%	0	0.0%	0	0.0%	2	6.5%	1	3.2%	0	0.0%	6	19.4%	10	32.3%	1	3.2%	0	0.0%	0	0.0%	0	0.0%	0	0.0%	0	0.0%	2	6.5%		
	11th	8	1	12.5%	2	25.0%	0	0.0%	0	0.0%	0	0.0%	0	0.0%	0	0.0%	0	0.0%	0	0.0%	0	0.0%	0	0.0%	0	0.0%	0	0.0%	0	0.0%	0	0.0%	5	62.5%				
	12th	3	2	66.7%	1	33.3%	0	0.0%	0	0.0%	0	0.0%	0	0.0%	0	0.0%	0	0.0%	0	0.0%	0	0.0%	0	0.0%	0	0.0%	0	0.0%	0	0.0%	0	0.0%	0	0.0%				
	15th	2	0	0.0%	0	0.0%	0	0.0%	0	0.0%	0	0.0%	0	0.0%	0	0.0%	0	0.0%	0	0.0%	0	0.0%	0	0.0%	0	0.0%	0	0.0%	0	0.0%	0	0.0%	2	100.0%				
	16th	1	0	0.0%	0	0.0%	0	0.0%	0	0.0%	0	0.0%	0	0.0%	0	0.0%	0	0.0%	0	0.0%	0	0.0%	0	0.0%	0	0.0%	0	0.0%	0	0.0%	0	0.0%	1	100.0%				
Southern Total		98	23	23%	12	12%	1	1.0%	2	2.0%	0	0.0%	2	2.0%	1	1.0%	0	0.0%	15	15%	27	28%	1	1.0%	0	0.0%	0	0.0%	0	0.0%	0	0.0%	0	0.0%	14	14%		
Western Region																																						
	6th	4	0	0.0%	2	50.0%	0	0.0%	0	0.0%	0	0.0%	0	0.0%	0	0.0%	0	0.0%	0	0.0%	0	0.0%	0	0.0%	0	0.0%	0	0.0%	0	0.0%	0	0.0%	2	50%				
	7th	7	1	14.3%	0	0.0%	0	0.0%	0	0.0%	0	0.0%	0	0.0%	0	0.0%	0	0.0%	3	42.9%	0	0.0%	0	0.0%	0	0.0%	0	0.0%	0	0.0%	0	0.0%	0	0.0%	3	42.9%		
	9th	7	3	42.9%	2	28.6%	1	14.3%	0	0.0%	0	0.0%	0	0.0%	0	0.0%	0	0.0%	1	14.3%	0	0.0%	0	0.0%	0	0.0%	0	0.0%	0	0.0%	0	0.0%	0	0.0%	0	0.0%		
	14th	2	0	0.0%	2	100.0%	0	0.0%	0	0.0%	0	0.0%	0	0.0%	0	0.0%	0	0.0%	0	0.0%	0	0.0%	0	0.0%	0	0.0%	0	0.0%	0	0.0%	0	0.0%	0	0.0%	0	0%		
	21st	20	7	35.0%	1	5.0%	0	0.0%	0	0.0%	0	0.0%	2	10.0%	0	0.0%	0	0.0%	1	5.0%	7	35.0%	0	0.0%	0	0.0%	0	0.0%	0	0.0%	0	0.0%	2	10.0%				
	22nd	4	0	0.0%	0	0.0%	0	0.0%	0	0.0%	0	0.0%	0	0.0%	0	0.0%	0	0.0%	2	50.0%	0	0.0%	0	0.0%	0	0.0%	0	0.0%	0	0.0%	0	0.0%	2	50.0%				
Western Total		44	11	25%	7	15.9%	1	2.3%	0	0.0%	0	0.0%	2	4.5%	0	0.0%	0	0.0%	3	6.8%	11	25%	0	0.0%	0	0.0%	0	0.0%	0	0.0%	0	0.0%	9	20%				
Individual RD Totals		471	115	24%	46	10%	24	5.1%	4	0.8%	0	0.0%	15	3.2%	3	0.6%	0	0.0%	40	8%	100	21%	2	0.4%	0	0.0%	0	0.0%	0	0.0%	0	0.0%	0	0.0%	122	26%		
Statewide Totals		471	161	34.2%	28	5.9%					18			3.8%			140	29.7%		2		0.4%		0		0.0%		0		0.0%	122	26%						

Central Region

SB94 Reason Detained by Judicial District

May 2017 New Admits

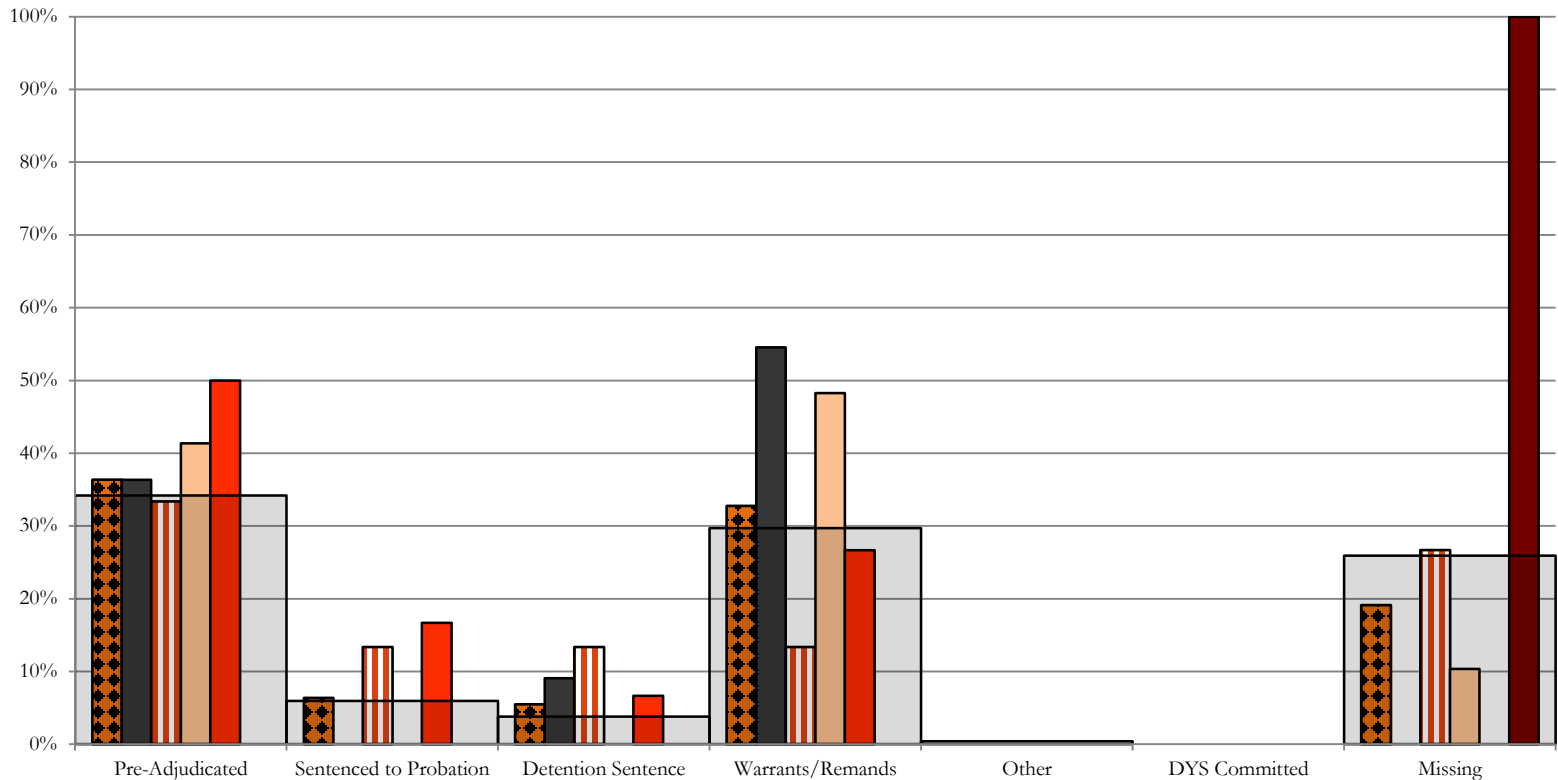


- CENTRAL REGION, 219 New Admits
- 1st JD, 59 New Admits
- 5th JD, 2 New Admits
- 2nd JD, 77 New Admits
- 18th JD, 81 New Admits
- STATEWIDE, 471 New Admits

Northeast Region

SB94 Reason Detained by Judicial District

May 2017 New Admits

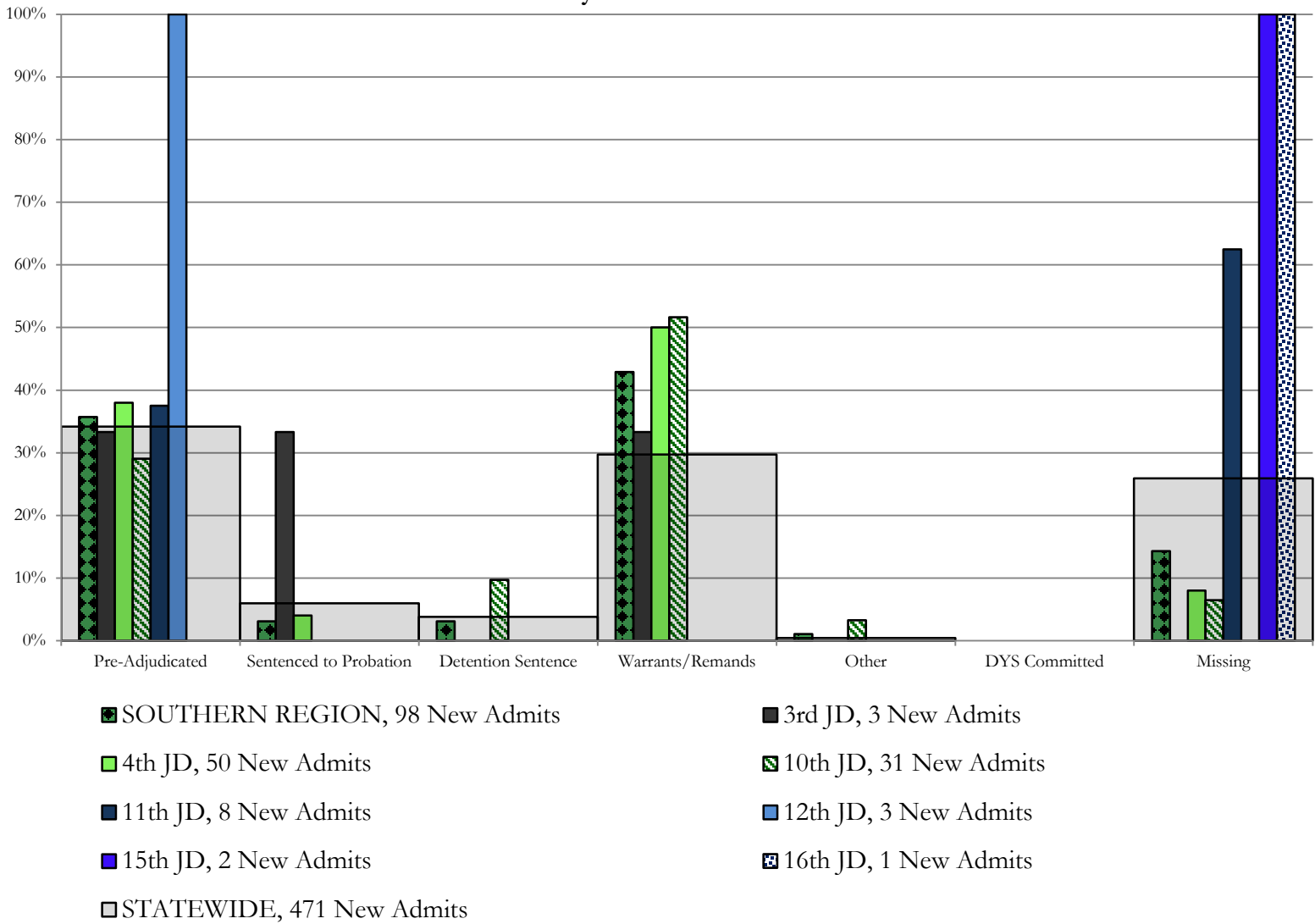


- NORTHEAST REGION, 110 New Admits
- 8th JD, 22 New Admits
- 13th JD, 15 New Admits
- 17th JD, 29 New Admits
- 19th JD, 30 New Admits
- 20th JD, 14 New Admits
- STATEWIDE, 471 New Admits

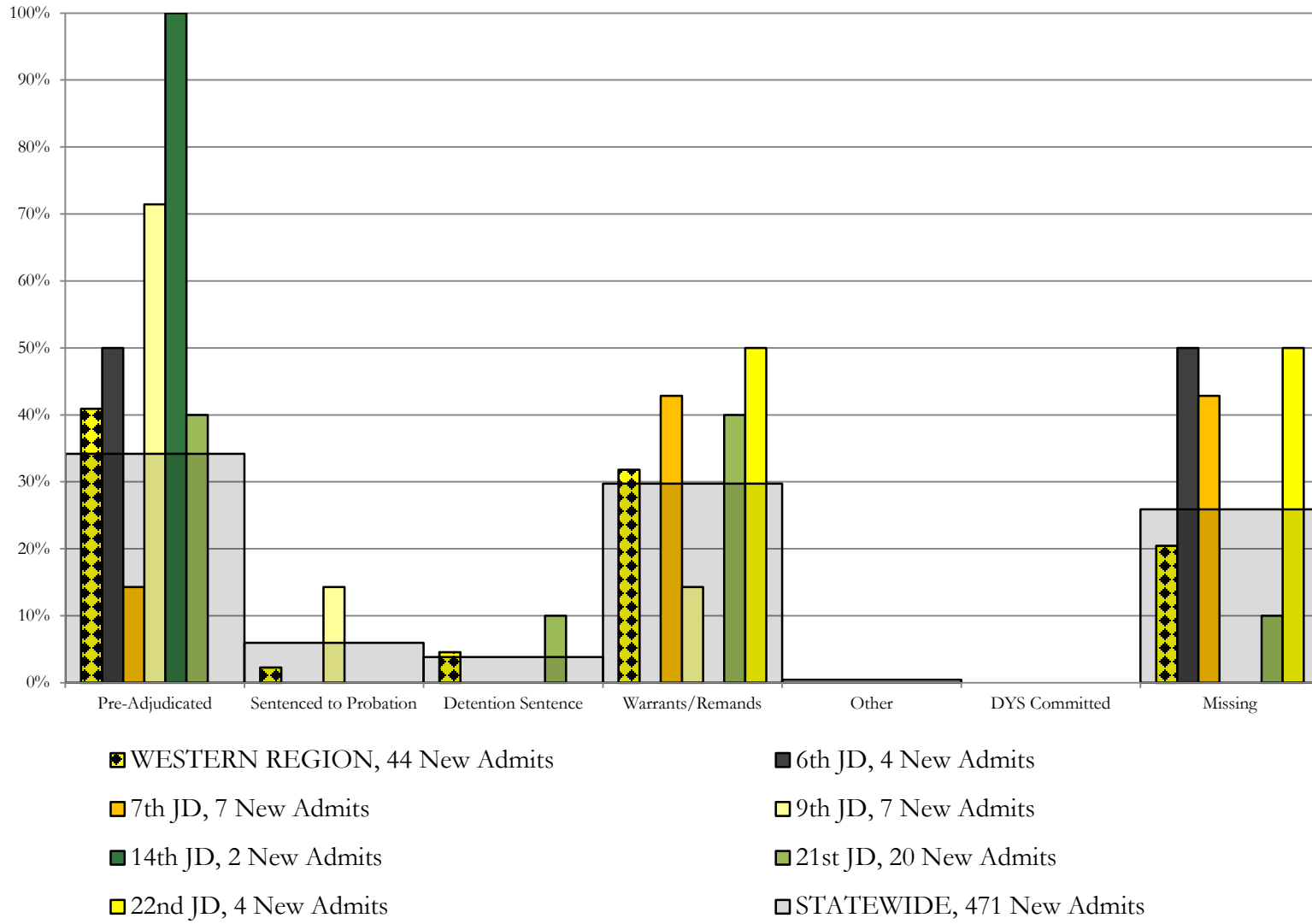
Southern Region

SB94 Reason Detained by Judicial District

May 2017 New Admits



Western Region SB94 Reason Detained by Judicial District May 2017 New Admits



May 2017 SB94 Supplemental Report

DYS Detention Maximum Youth Served by Judicial District¹

Region	JD	Detention Capacity	Detention ADP		Maximum Youth Served on a Single Day ^{2,3}			
			May 2017	YTD	May 2017		YTD	
					Number of Youth	% of Detention Capacity	Number of Youth	% of Detention Capacity
<i>Central Region</i>								
	1st	37	34.0	24.0	39	105.4%	39	105.4%
	2nd	64	39.3	43.9	46	71.9%	59	92.2%
	5th	4	0.7	1.1	1	25.0%	4	100.0%
	18th	61	38.8	40.2	48	78.7%	59	96.7%
Central Region		166	112.8	109.2	118	71.1%	135	81.3%
<i>Northeast Region</i>								
	8th	21	10.8	10.7	13	61.9%	19	90.5%
	13th	5	7.6	2.5	11	220.0%	11	220.0%
	17th	30	18.7	21.5	23	76.7%	30	100.0%
	19th	25	10.8	19.5	16	64.0%	32	128.0%
	20th	13	4.7	6.7	8	61.5%	13	100.0%
Northeast Region		94	52.6	61.0	64	68.1%	76	80.9%
<i>Southern Region</i>								
	3rd	2	0.8	0.6	2	100.0%	3	150.0%
	4th	51	45.4	44.9	51	100.0%	52	102.0%
	10th	13	10.9	11.4	15	115.4%	19	146.2%
	11th	8	0.4	2.4	5	62.5%	6	75.0%
	12th	4	2.7	1.7	3	75.0%	4	100.0%
	15th	2	3.9	2.8	6	300.0%	6	300.0%
	16th	3	0.8	0.9	2	66.7%	4	133.3%
Southern Region		83	65.0	64.7	71	85.5%	78	94.0%
<i>Western Region</i>								
	6th	5	1.9	2.2	4	80.0%	7	140.0%
	7th	7	3.3	4.1	5	71.4%	9	128.6%
	9th	6	2.1	2.5	4	66.7%	5	83.3%
	14th	3	0.5	0.3	2	66.7%	2	66.7%
	21st	14	10.7	10.9	15	107.1%	18	128.6%
	22nd	4	1.3	0.8	2	50.0%	4	100.0%
Western Region		39	19.8	20.9	27	69.2%	31	79.5%
<i>Missing JD or Multiple JDs</i>			2.3	1.3				
Statewide		382	252.5	257.1	274	71.7%	299	78.3%

¹ Maximum youth served is the highest number of youth in detention on a single day during the month or fiscal year.

² Regional figures are not the sum of judicial districts, but represent the maximum count on one day for the entire region.

³ State figures are not the sum of regional figures, but represent the maximum count on one day for the entire state.

May 2017
SB94 Supplemental Report

SB94 Community ADP by Judicial District

Region	JD	Committed		Diversion		ICJ		Municipal		Pre-Adjudicated		Sentenced		VCO		Total	
		May	YTD	May	YTD	May	YTD	May	YTD	May	YTD	May	YTD	May	YTD	May	YTD
<i>Central Region</i>																	
	1st	0.0	0.4	0.0	0.0	0.1	0.0	9.9	9.7	325.7	271.7	34.8	23.3	0.3	0.2	370.8	305.3
	2nd	8.0	5.9	0.0	0.0	1.0	0.6	0.0	0.1	202.3	183.5	52.8	40.7	0.0	0.0	264.1	230.8
	5th	0.0	0.0	20.3	10.9	0.0	0.0	0.0	0.0	9.4	12.7	27.7	26.6	0.0	0.0	57.4	50.2
	18th	2.0	1.3	4.0	4.0	0.0	0.2	0.0	0.0	361.3	54.5	45.0	44.9	8.0	8.2	420.2	113.1
Central Total		10.0	7.6	24.3	14.9	1.1	0.8	9.9	9.8	898.7	522.4	160.3	135.5	8.3	8.5	1112.6	699.4
<i>Northeast Region</i>																	
	8th	0.0	0.0	1.0	1.3	0.0	0.0	0.0	0.0	47.4	42.2	42.9	33.7	0.0	0.0	91.3	77.3
	13th	0.0	0.3	0.0	0.0	0.0	0.0	0.0	0.0	21.2	11.5	8.0	9.4	9.0	6.0	38.1	27.3
	17th	1.0	0.8	0.0	0.0	0.0	0.0	1.0	1.0	178.8	320.6	65.1	61.7	0.0	0.0	245.9	384.1
	19th	1.1	0.3	0.0	0.2	0.0	0.0	0.0	0.0	58.8	54.5	30.2	36.1	0.0	0.8	90.1	91.9
	20th	0.0	0.5	14.9	9.2	0.0	0.0	0.0	0.0	97.9	59.6	56.2	54.6	103.0	55.6	272.1	179.6
Northeast Total		2.1	1.9	15.9	10.7	0.0	0.0	1.0	1.0	404.2	488.4	202.5	195.5	112.0	62.5	737.6	760.1
<i>Southern Region</i>																	
	3rd	0.0	0.0	0.0	0.0	0.0	0.0	0.0	0.0	12.5	8.6	6.0	6.2	0.0	0.7	18.5	15.6
	4th	4.0	1.4	0.0	0.0	0.0	0.0	106.0	100.4	228.1	180.1	59.0	49.7	1.0	1.0	398.1	332.5
	10th	0.0	0.0	0.0	0.0	2.0	0.9	21.9	24.4	24.7	18.2	17.4	16.0	5.0	5.2	71.1	64.7
	11th	0.0	0.0	0.0	0.0	0.0	0.0	5.0	2.6	10.0	7.8	20.5	22.1	2.0	0.9	37.5	33.4
	12th	0.0	0.0	12.0	3.8	0.0	0.0	8.9	5.4	5.4	4.2	3.0	2.9	0.0	0.0	29.3	16.3
	15th	0.0	0.0	0.0	0.0	0.0	0.0	0.0	0.0	2.5	5.7	3.8	11.2	0.0	0.0	6.4	16.9
	16th	0.0	0.0	0.0	0.0	0.0	0.0	0.0	0.0	10.5	152.5	4.0	6.5	20.7	20.1	35.2	179.1
Southern Total		4.0	1.4	12.0	3.8	2.0	0.9	141.8	132.8	293.8	377.2	113.7	114.7	28.6	27.9	596.0	658.6
<i>Western Region</i>																	
	6th	0.0	0.0	0.0	0.0	0.0	0.0	0.0	0.0	9.3	12.0	1.0	0.3	0.0	0.0	10.3	12.4
	7th	0.0	0.1	5.0	6.5	0.0	0.0	1.0	0.8	18.1	13.4	21.2	23.4	0.0	0.0	45.3	44.2
	9th	0.0	0.0	0.0	0.0	0.0	0.0	0.0	0.0	14.8	8.5	5.4	7.8	0.0	0.0	20.2	16.2
	14th	0.0	0.0	3.0	8.9	0.0	0.0	0.0	0.0	4.2	3.2	1.2	1.6	0.0	0.0	8.5	13.7
	21st	0.0	0.0	0.0	0.2	0.0	0.0	2.0	2.0	44.4	36.2	16.6	17.7	0.0	0.0	63.0	56.2
	22nd	0.0	0.0	0.0	0.0	0.0	0.0	0.0	0.0	11.5	7.5	2.0	0.8	0.0	0.0	13.4	8.3
Western Total		0.0	0.1	8.0	15.6	0.0	0.0	3.0	2.8	102.3	80.8	47.4	51.6	0.0	0.0	160.7	151.0
Statewide Total		16.1	10.9	60.2	45.0	3.1	1.7	155.8	146.4	1699.0	1468.8	523.9	497.3	148.9	98.8	2606.9	2269.1