

April 2017  
FY 2016-2017  
SB94 JDSAG SUPPLEMENTAL REPORT

Prepared by the Division of Youth Corrections (DYC)  
Research and Evaluation Unit  
May 24th, 2017



**COLORADO**

**Office of Children,  
Youth & Families**

Division of Youth Corrections

# April 2017 SB94 Supplemental Report

## DYC Commitment ADP & New Commitments by Judicial District

Region	JD <sup>1</sup>	2017 Population Estimates <sup>2</sup>	ADP <sup>3</sup>		New Commitments		
			April 2017	YTD	April 2017	YTD	YTD Rate <sup>4</sup>
<i>Central Region</i>							
	1st	56,020	79.7	74.9	6	36	6.4
	2nd	62,634	102.7	113.1	2	29	4.6
	5th	10,162	10.7	9.5	2	4	3.9
	18th	121,363	72.3	66.0	8	39	3.2
<b>Central Total</b>		<b>250,179</b>	<b>265.3</b>	<b>263.6</b>	<b>18</b>	<b>108</b>	<b>4.3</b>
<i>Northeast Region</i>							
	8th	32,983	46.6	44.0	4	34	10.3
	13th	8,520	6.6	6.7	0	4	4.7
	17th	71,425	68.1	72.3	1	30	4.2
	19th	36,924	63.1	54.8	3	40	10.8
	20th	32,693	9.6	9.4	0	7	2.1
<b>Northeast Total</b>		<b>182,545</b>	<b>194.0</b>	<b>187.2</b>	<b>8</b>	<b>115</b>	<b>6.3</b>
<i>Southern Region</i>							
	3rd	1,871	1.0	1.1	0	1	5.3
	4th	81,725	82.0	80.3	4	38	4.6
	10th	17,869	37.0	38.7	1	15	8.4
	11th	7,196	6.0	4.7	0	2	2.8
	12th	5,241	8.0	8.9	0	3	5.7
	15th	2,102	3.0	1.4	0	3	14.3
	16th	2,749	0.0	-	0	0	0.0
<b>Southern Total</b>		<b>118,753</b>	<b>136.9</b>	<b>135.0</b>	<b>5</b>	<b>62</b>	<b>5.2</b>
<i>Western Region</i>							
	6th	6,491	7.6	7.2	0	4	6.2
	7th	10,788	7.0	7.9	0	3	2.8
	9th	9,477	6.0	4.9	0	3	3.2
	14th	5,635	2.0	2.5	0	0	0.0
	21st	15,968	41.1	37.7	1	22	13.8
	22nd	3,108	4.1	3.2	1	2	6.4
<b>Western Total</b>		<b>51,467</b>	<b>67.7</b>	<b>63.5</b>	<b>2</b>	<b>34</b>	<b>6.6</b>
<b>Statewide Total</b>		<b>602,944</b>	<b>664.0</b>	<b>649.3</b>	<b>33</b>	<b>319</b>	<b>5.3</b>

<sup>1</sup> JD represents the judicial district in which the client was committed. Regional totals are a sum of their respective judicial districts. Regional totals reported here may differ slightly from those reported in the Monthly Population Report, where region is defined by active caseloads.

<sup>2</sup> Source: DOLA 2017 Estimates.

<sup>3</sup> Due to rounding, totals shown may not be an exact sum of the subtotals.

<sup>4</sup> Per 10,000 youth in the population.

# April 2017

## SB94 Supplemental Report

### DYC Detention ADP and New Detention Admissions by Judicial District

Region	JD	2017 Population Estimates <sup>1</sup>	ADP		New Admits		YTD New Admit Rate <sup>2</sup>
			April 2017	YTD	April 2017	YTD	
<i>Central Region</i>							
	1st	56,020	28.4	23.1	50	581	103.7
	2nd	62,634	42.6	44.4	69	786	125.5
	5th	10,162	0.2	1.2	1	23	22.6
	18th	121,363	41.0	40.3	66	821	67.6
<b>Central Total</b>		<b>250,179</b>	<b>112.2</b>	<b>109.0</b>	<b>186</b>	<b>2,211</b>	<b>88.4</b>
<i>Northeast Region</i>							
	8th	32,983	11.5	10.7	20	238	72.2
	13th	8,520	3.3	2.0	10	52	61.0
	17th	71,425	21.0	22.1	35	406	56.8
	19th	36,924	17.2	20.4	41	448	121.3
	20th	32,693	6.3	6.9	9	165	50.5
<b>Northeast Total</b>		<b>182,545</b>	<b>59.4</b>	<b>62.1</b>	<b>115</b>	<b>1,309</b>	<b>71.7</b>
<i>Southern Region</i>							
	3rd	1,871	0.4	0.6	5	19	101.5
	4th	81,725	43.8	45.4	75	692	84.7
	10th	17,869	10.2	11.4	21	244	136.5
	11th	7,196	2.4	2.6	6	95	132.0
	12th	5,241	2.9	1.7	5	34	64.9
	15th	2,102	4.9	2.7	5	29	138.0
	16th	2,749	0.8	0.9	4	21	76.4
<b>Southern Total</b>		<b>118,753</b>	<b>65.5</b>	<b>65.2</b>	<b>121</b>	<b>1,134</b>	<b>95.5</b>
<i>Western Region</i>							
	6th	6,491	0.8	2.3	6	40	61.6
	7th	10,788	4.0	4.2	1	51	47.3
	9th	9,477	3.3	2.5	6	40	42.2
	14th	5,635	0.2	0.3	1	9	16.0
	21st	15,968	10.9	10.9	18	197	123.4
	22nd	3,108	0.1	0.8	1	17	54.7
<b>Western Total</b>		<b>51,467</b>	<b>19.3</b>	<b>21.0</b>	<b>33</b>	<b>354</b>	<b>68.8</b>
<i>Missing JD or Multiple JDs</i>			<i>2.1</i>	<i>1.2</i>			
<b>Statewide Total</b>		<b>602,944</b>	<b>258.5</b>	<b>258.5</b>	<b>455</b>	<b>5,008</b>	<b>83.1</b>

<sup>1</sup> Source: DOLA 2017 Estimates.

<sup>2</sup> Per 10,000 youth in the population.

# April 2017 SB94 Supplemental Report

## DYC Detention LOS by Judicial District

Region	JD	YTD Detention Releases	YTD LOS (days)	LOS (days) Compared to State AVG
<i>Central Region</i>				
	1st	557	11.3	-4.0
	2nd	798	16.7	1.4
	5th	23	14.7	-0.6
	18th	804	14.2	-1.1
<b>Central Total</b>		<b>2,182</b>	<b>14.4</b>	<b>-0.9</b>
<i>Northeast Region</i>				
	8th	238	13.2	-2.0
	13th	49	10.8	-4.4
	17th	398	15.4	0.1
	19th	455	13.3	-1.9
	20th	163	10.7	-4.6
<b>Northeast Total</b>		<b>1,303</b>	<b>13.5</b>	<b>-1.8</b>
<i>Southern Region</i>				
	3rd	19	9.8	-5.5
	4th	680	18.6	3.4
	10th	248	13.5	-1.8
	11th	92	7.9	-7.4
	12th	31	15.4	0.1
	15th	27	26.6	11.3
	16th	20	11.7	-3.6
<b>Southern Total</b>		<b>1,117</b>	<b>16.4</b>	<b>1.2</b>
<i>Western Region</i>				
	6th	42	16.5	1.2
	7th	48	17.8	2.5
	9th	38	18.1	2.8
	14th	9	8.7	-6.6
	21st	191	15.0	-0.3
	22nd	18	12.7	-2.6
<b>Western Total</b>		<b>346</b>	<b>15.6</b>	<b>0.3</b>
<b>Statewide Total</b>		<b>4,978</b>	<b>15.3</b>	<b>-</b>

## April 2017 SB94 JDSAG Supplemental Report

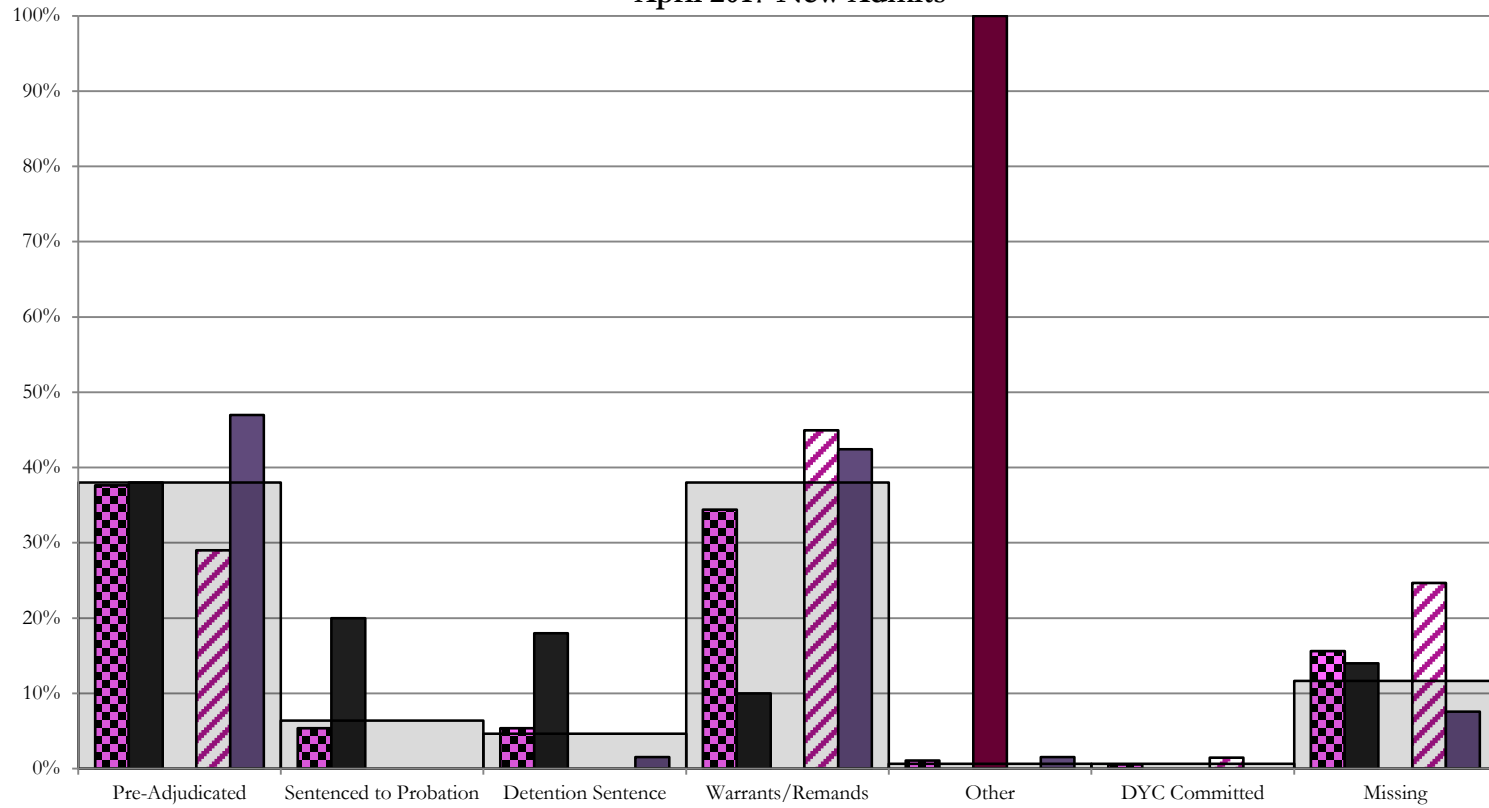
### SB94 Reason Detained (RD) by Judicial District

Region	JD	Monthly New Admits	Pre-Adjudicated				Sentenced to Probation				Detention Sentence								Warrants/Remands				Other						DYC Committed		Missing					
			Felony		Misdemeanor		Technical Violator		New Charges		Probation Sentence		Detention Sentence		Valid Court Order (VCO) Truancy		Awaiting DSS (Social Services) Placement		Failure to Appear (FTA)		Failure to Comply (FTC)		Interstate Compact on Juveniles (ICJ) Hold		Immigration Hold		No Bond Hold		Out-of-Country Warrant		Institutional		Parole		Missing	
			#	%	#	%	#	%	#	%	#	%	#	%	#	%	#	%	#	%	#	%	#	%	#	%	#	%	#	%	#	%	#	%	#	%
<b>Central Region</b>																																				
	1st	50	11	22.0%	8	16.0%	10	20.0%	0	0.0%	0	0.0%	9	18.0%	0	0.0%	0	0.0%	2	4.0%	3	6.0%	0	0.0%	0	0.0%	0	0.0%	0	0.0%	0	0.0%	0	0.0%	7	14.0%
	2nd	69	12	17.4%	8	11.6%	0	0.0%	0	0.0%	0	0.0%	0	0.0%	0	0.0%	0	0.0%	10	14.5%	21	30.4%	0	0.0%	0	0.0%	0	0.0%	0	0.0%	1	1.4%	0	0.0%	17	24.6%
	5th	1	0	0.0%	0	0.0%	0	0.0%	0	0.0%	0	0.0%	0	0.0%	0	0.0%	0	0.0%	0	0.0%	0	0.0%	1	100.0%	0	0.0%	0	0.0%	0	0.0%	0	0.0%	0	0.0%	0	0.0%
	18th	66	16	24.2%	15	22.7%	0	0.0%	0	0.0%	0	0.0%	1	1.5%	0	0.0%	0	0.0%	5	7.6%	23	34.8%	1	1.5%	0	0.0%	0	0.0%	0	0.0%	0	0.0%	0	0.0%	5	7.6%
<b>Central Total</b>		<b>186</b>	<b>39</b>	<b>21%</b>	<b>31</b>	<b>17%</b>	<b>10</b>	<b>5.4%</b>	<b>0</b>	<b>0.0%</b>	<b>0</b>	<b>0.0%</b>	<b>10</b>	<b>5.4%</b>	<b>0</b>	<b>0.0%</b>	<b>0</b>	<b>0.0%</b>	<b>17</b>	<b>9%</b>	<b>47</b>	<b>25%</b>	<b>2</b>	<b>1.1%</b>	<b>0</b>	<b>0.0%</b>	<b>0</b>	<b>0.0%</b>	<b>0</b>	<b>0.0%</b>	<b>1</b>	<b>0.5%</b>	<b>0</b>	<b>0.0%</b>	<b>29</b>	<b>15.6%</b>
<b>Northeast Region</b>																																				
	8th	20	3	15.0%	1	5.0%	0	0.0%	0	0.0%	0	0.0%	1	5.0%	0	0.0%	0	0.0%	1	5.0%	11	55.0%	0	0.0%	0	0.0%	0	0.0%	0	0.0%	0	0.0%	0	0.0%	3	15.0%
	13th	10	2	20.0%	2	20.0%	1	10.0%	0	0.0%	0	0.0%	0	0.0%	0	0.0%	0	0.0%	0	0.0%	0	0.0%	0	0.0%	0	0.0%	0	0.0%	0	0.0%	0	0.0%	5	50.0%		
	17th	35	6	17.1%	3	8.6%	0	0.0%	0	0.0%	0	0.0%	0	0.0%	0	0.0%	0	0.0%	5	14.3%	13	37.1%	0	0.0%	0	0.0%	0	0.0%	0	0.0%	0	0.0%	0	0.0%	8	22.9%
	19th	41	15	36.6%	5	12.2%	6	14.6%	0	0.0%	0	0.0%	0	0.0%	0	0.0%	0	0.0%	2	4.9%	13	31.7%	0	0.0%	0	0.0%	0	0.0%	0	0.0%	0	0.0%	0	0.0%	0	0.0%
	20th	9	3	33.3%	0	0.0%	2	22.2%	0	0.0%	0	0.0%	3	33.3%	0	0.0%	1	11.1%	0	0.0%	0	0.0%	0	0.0%	0	0.0%	0	0.0%	0	0.0%	0	0.0%	0	0.0%	0	0.0%
<b>Northeast Total</b>		<b>115</b>	<b>29</b>	<b>25%</b>	<b>11</b>	<b>10%</b>	<b>9</b>	<b>7.8%</b>	<b>0</b>	<b>0.0%</b>	<b>0</b>	<b>0.0%</b>	<b>4</b>	<b>3.5%</b>	<b>0</b>	<b>0.0%</b>	<b>1</b>	<b>0.9%</b>	<b>8</b>	<b>7.0%</b>	<b>37</b>	<b>32%</b>	<b>0</b>	<b>0.0%</b>	<b>0</b>	<b>0.0%</b>	<b>0</b>	<b>0.0%</b>	<b>0</b>	<b>0.0%</b>	<b>0</b>	<b>0.0%</b>	<b>0</b>	<b>0.0%</b>	<b>16</b>	<b>14%</b>
<b>Southern Region</b>																																				
	3rd	5	0	0.0%	0	0.0%	1	20.0%	0	0.0%	0	0.0%	0	0.0%	0	0.0%	0	0.0%	1	20.0%	3	60.0%	0	0.0%	0	0.0%	0	0.0%	0	0.0%	0	0.0%	0	0.0%	0	0.0%
	4th	75	24	32.0%	7	9.3%	0	0.0%	4	5.3%	0	0.0%	0	0.0%	1	1.3%	0	0.0%	10	13.3%	24	32.0%	0	0.0%	0	0.0%	0	0.0%	2	2.7%	0	0.0%	3	4.0%		
	10th	21	6	28.6%	0	0.0%	0	0.0%	0	0.0%	0	0.0%	0	0.0%	0	0.0%	0	0.0%	9	42.9%	6	28.6%	0	0.0%	0	0.0%	0	0.0%	0	0.0%	0	0.0%	0	0.0%	0	0.0%
	11th	6	1	16.7%	2	33.3%	0	0.0%	0	0.0%	0	0.0%	1	16.7%	0	0.0%	0	0.0%	1	16.7%	1	16.7%	0	0.0%	0	0.0%	0	0.0%	0	0.0%	0	0.0%	0	0.0%	0	0.0%
	12th	5	4	80.0%	1	20.0%	0	0.0%	0	0.0%	0	0.0%	0	0.0%	0	0.0%	0	0.0%	0	0.0%	0	0.0%	0	0.0%	0	0.0%	0	0.0%	0	0.0%	0	0.0%	0	0.0%	0	0.0%
	15th	5	0	0.0%	0	0.0%	3	60.0%	0	0.0%	0	0.0%	1	20.0%	0	0.0%	0	0.0%	0	0.0%	0	0.0%	1	20.0%	0	0.0%	0	0.0%	0	0.0%	0	0.0%	0	0.0%	0	0.0%
	16th	4	2	50.0%	1	25.0%	0	0.0%	0	0.0%	0	0.0%	1	25.0%	0	0.0%	0	0.0%	0	0.0%	0	0%	0	0.0%	0	0.0%	0	0.0%	0	0.0%	0	0.0%	0	0.0%	0	0.0%
<b>Southern Total</b>		<b>121</b>	<b>37</b>	<b>31%</b>	<b>11</b>	<b>9%</b>	<b>4</b>	<b>3.3%</b>	<b>4</b>	<b>3.3%</b>	<b>0</b>	<b>0.0%</b>	<b>3</b>	<b>2.5%</b>	<b>1</b>	<b>0.8%</b>	<b>0</b>	<b>0.0%</b>	<b>21</b>	<b>17%</b>	<b>34</b>	<b>28%</b>	<b>1</b>	<b>0.8%</b>	<b>0</b>	<b>0.0%</b>	<b>0</b>	<b>0.0%</b>	<b>0</b>	<b>0.0%</b>	<b>2</b>	<b>1.7%</b>	<b>0</b>	<b>0.0%</b>	<b>3</b>	<b>2%</b>
<b>Western Region</b>																																				
	6th	6	2	33.3%	2	33.3%	0	0.0%	0	0.0%	0	0.0%	0	0.0%	0	0.0%	0	0.0%	1	16.7%	0	0.0%	0	0.0%	0	0.0%	0	0.0%	0	0.0%	0	0.0%	1	17%		
	7th	1	1	100.0%	0	0.0%	0	0.0%	0	0.0%	0	0.0%	0	0.0%	0	0.0%	0	0.0%	0	0.0%	0	0.0%	0	0.0%	0	0.0%	0	0.0%	0	0.0%	0	0.0%	0	0.0%	0	0.0%
	9th	6	2	33.3%	1	16.7%	2	33.3%	0	0.0%	0	0.0%	0	0.0%	0	0.0%	0	0.0%	0	0.0%	0	0.0%	0	0.0%	0	0.0%	0	0.0%	0	0.0%	0	0.0%	0	0.0%	1	16.7%
	14th	1	0	0.0%	0	0.0%	0	0.0%	0	0.0%	0	0.0%	0	0.0%	0	0.0%	0	0.0%	0	0.0%	0	0.0%	0	0.0%	0	0.0%	0	0.0%	0	0.0%	0	0.0%	0	0.0%	1	100%
	21st	18	5	27.8%	2	11.1%	0	0.0%	0	0.0%	0	0.0%	2	11.1%	0	0.0%	0	0.0%	1	5.6%	7	38.9%	0	0.0%	0	0.0%	0	0.0%	0	0.0%	0	0.0%	1	5.6%		
	22nd	1	0	0.0%	0	0.0%	0	0.0%	0	0.0%	0	0.0%	0	0.0%	0	0.0%	0	0.0%	0	0.0%	0	0.0%	0	0.0%	0	0.0%	0	0.0%	0	0.0%	0	0.0%	1	100.0%		
<b>Western Total</b>		<b>33</b>	<b>10</b>	<b>30%</b>	<b>5</b>	<b>15.2%</b>	<b>2</b>	<b>6.1%</b>	<b>0</b>	<b>0.0%</b>	<b>0</b>	<b>0.0%</b>	<b>2</b>	<b>6.1%</b>	<b>0</b>	<b>0.0%</b>	<b>0</b>	<b>0.0%</b>	<b>2</b>	<b>6.1%</b>	<b>7</b>	<b>21%</b>	<b>0</b>	<b>0.0%</b>	<b>0</b>	<b>0.0%</b>	<b>0</b>	<b>0.0%</b>	<b>0</b>	<b>0.0%</b>	<b>0</b>	<b>0.0%</b>	<b>5</b>	<b>15%</b>		
<b>Individual RD Totals</b>		<b>455</b>	<b>115</b>	<b>25%</b>	<b>58</b>	<b>13%</b>	<b>25</b>	<b>5.5%</b>	<b>4</b>	<b>0.9%</b>	<b>0</b>	<b>0.0%</b>	<b>19</b>	<b>4.2%</b>	<b>1</b>	<b>0.2%</b>	<b>1</b>	<b>0.2%</b>	<b>48</b>	<b>11%</b>	<b>125</b>	<b>27%</b>	<b>3</b>	<b>0.7%</b>	<b>0</b>	<b>0.0%</b>	<b>0</b>	<b>0.0%</b>	<b>0</b>	<b>0.0%</b>	<b>3</b>	<b>0.7%</b>	<b>0</b>	<b>0.0%</b>	<b>53</b>	<b>12%</b>
<b>Statewide Totals</b>		<b>455</b>	<b>173</b>	<b>38.0%</b>	<b>29</b>	<b>6.4%</b>	<b>21</b>	<b>4.6%</b>	<b>173</b>	<b>38.0%</b>	<b>3</b>	<b>0.7%</b>	<b>53</b>	<b>12%</b>																						

# Central Region

## SB94 Reason Detained by Judicial District

### April 2017 New Admits



■ CENTRAL REGION, 186 New Admits

■ 5th JD, 1 New Admits

■ 18th JD, 66 New Admits

■ 1st JD, 50 New Admits

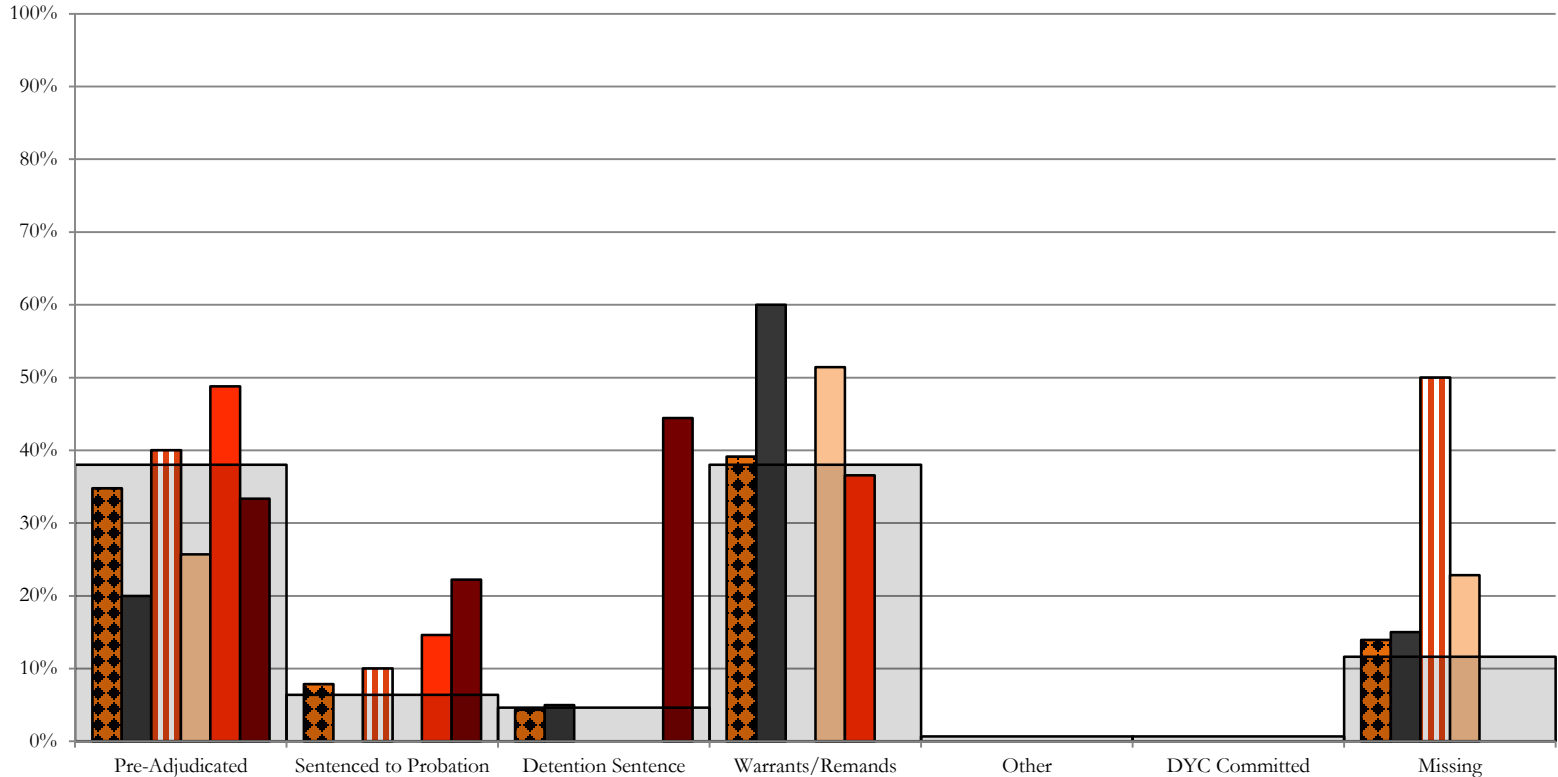
■ 2nd JD, 69 New Admits

■ STATEWIDE, 455 New Admits

# Northeast Region

## SB94 Reason Detained by Judicial District

### April 2017 New Admits

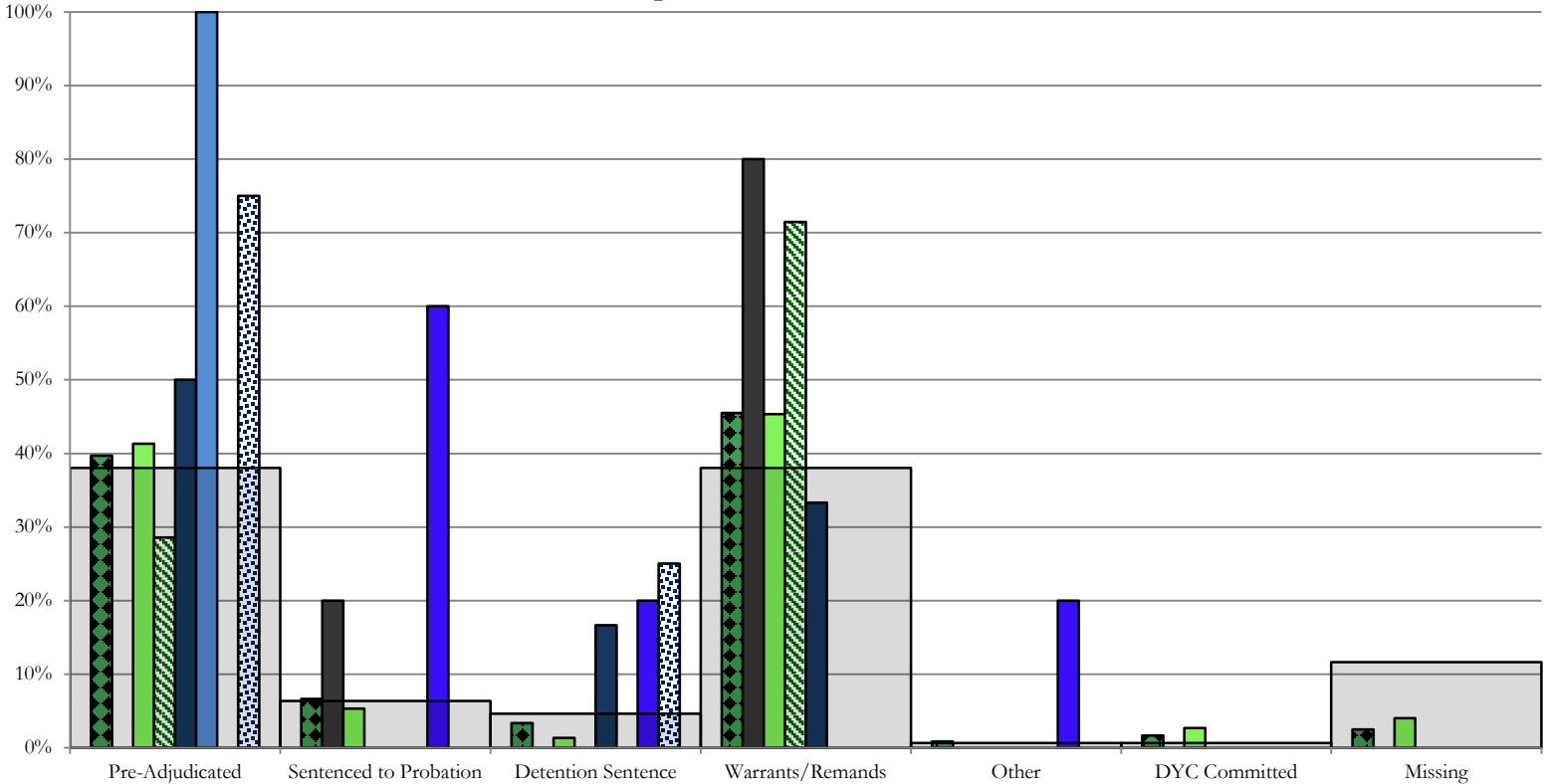


- NORTHEAST REGION, 115 New Admits
- 8th JD, 20 New Admits
- 13th JD, 10 New Admits
- 19th JD, 41 New Admits
- STATEWIDE, 455 New Admits
- 17th JD, 35 New Admits
- 20th JD, 9 New Admits

# Southern Region

## SB94 Reason Detained by Judicial District

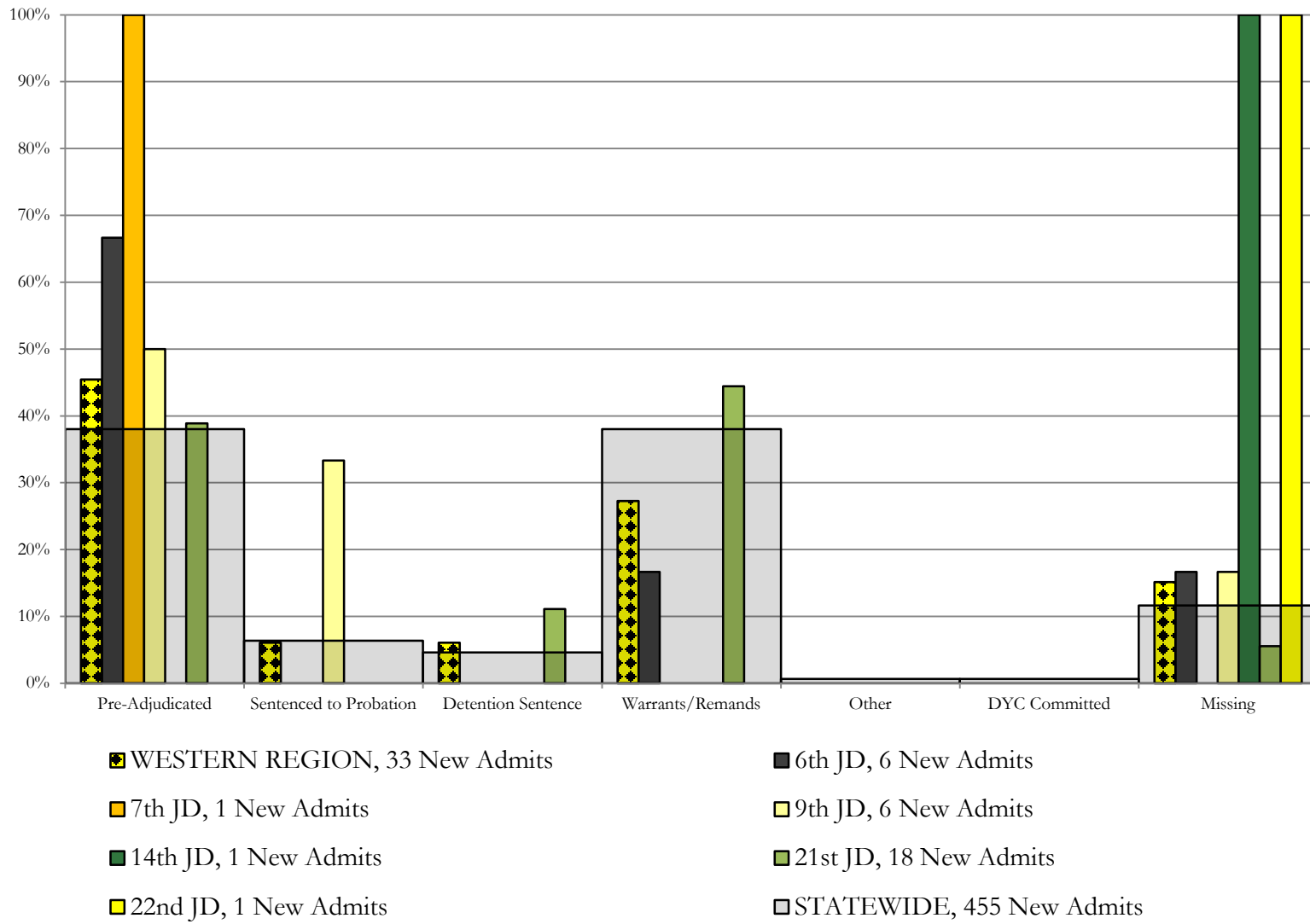
### April 2017 New Admits



- SOUTHERN REGION, 121 New Admits
- 4th JD, 75 New Admits
- 11th JD, 6 New Admits
- 15th JD, 5 New Admits
- STATEWIDE, 455 New Admits
- 3rd JD, 5 New Admits
- 10th JD, 21 New Admits
- 12th JD, 5 New Admits
- 16th JD, 4 New Admits



## Western Region SB94 Reason Detained by Judicial District April 2017 New Admits



# April 2017 SB94 Supplemental Report

## DYC Detention Maximum Youth Served by Judicial District<sup>1</sup>

Region	JD	Detention Capacity	Detention ADP		Maximum Youth Served on a Single Day <sup>2,3</sup>			
			April 2017	YTD	April 2017		YTD	
					Number of Youth	% of Detention Capacity	Number of Youth	% of Detention Capacity
<i>Central Region</i>								
	1st	37	28.4	23.1	34	91.9%	38	102.7%
	2nd	64	42.6	44.4	49	76.6%	59	92.2%
	5th	4	0.2	1.2	1	25.0%	4	100.0%
	18th	61	41.0	40.3	46	75.4%	59	96.7%
<b>Central Region</b>		<b>166</b>	<b>112.2</b>	<b>109.0</b>	<b>121</b>	<b>72.9%</b>	<b>135</b>	<b>81.3%</b>
<i>Northeast Region</i>								
	8th	21	11.5	10.7	14	66.7%	19	90.5%
	13th	5	3.3	2.0	7	140.0%	7	140.0%
	17th	30	21.0	22.1	25	83.3%	30	100.0%
	19th	25	17.2	20.4	24	96.0%	32	128.0%
	20th	13	6.3	6.9	10	76.9%	13	100.0%
<b>Northeast Region</b>		<b>94</b>	<b>59.4</b>	<b>62.1</b>	<b>66</b>	<b>70.2%</b>	<b>76</b>	<b>80.9%</b>
<i>Southern Region</i>								
	3rd	2	0.4	0.6	2	100.0%	3	150.0%
	4th	51	43.8	45.4	48	94.1%	52	102.0%
	10th	13	10.2	11.4	16	123.1%	19	146.2%
	11th	8	2.4	2.6	4	50.0%	6	75.0%
	12th	4	2.9	1.7	4	100.0%	4	100.0%
	15th	2	4.9	2.7	6	300.0%	6	300.0%
	16th	3	0.8	0.9	3	100.0%	4	133.3%
<b>Southern Region</b>		<b>83</b>	<b>65.5</b>	<b>65.2</b>	<b>79</b>	<b>95.2%</b>	<b>79</b>	<b>95.2%</b>
<i>Western Region</i>								
	6th	5	0.8	2.3	2	40.0%	7	140.0%
	7th	7	4.0	4.2	5	71.4%	9	128.6%
	9th	6	3.3	2.5	5	83.3%	5	83.3%
	14th	3	0.2	0.3	1	33.3%	2	66.7%
	21st	14	10.9	10.9	14	100.0%	18	128.6%
	22nd	4	0.1	0.8	1	25.0%	4	100.0%
<b>Western Region</b>		<b>39</b>	<b>19.3</b>	<b>21.0</b>	<b>23</b>	<b>59.0%</b>	<b>31</b>	<b>79.5%</b>
<i>Missing JD or Multiple JDs</i>			2.1	1.2				
<b>Statewide</b>		<b>382</b>	<b>258.5</b>	<b>258.5</b>	<b>265</b>	<b>69.4%</b>	<b>299</b>	<b>78.3%</b>

<sup>1</sup> Maximum youth served is the highest number of youth in detention on a single day during the month or fiscal year.

<sup>2</sup> Regional figures are not the sum of judicial districts, but represent the maximum count on one day for the entire region.

<sup>3</sup> State figures are not the sum of regional figures, but represent the maximum count on one day for the entire state.

## April 2017 SB94 Supplemental Report

### SB94 Community ADP by Judicial District

Region	JD	Committed		Diversion		ICJ		Municipal		Pre-Adjudicated		Sentenced		VCO		Total	
		April	YTD	April	YTD	April	YTD	April	YTD	April	YTD	April	YTD	April	YTD	April	YTD
<i>Central Region</i>																	
	1st	0.0	0.5	0.0	0.0	0.0	0.0	9.0	9.6	332.7	275.2	32.0	22.3	1.0	0.2	374.7	307.8
	2nd	8.9	5.6	0.0	0.0	1.0	0.6	0.0	0.1	186.2	182.5	54.5	39.5	0.0	0.0	250.7	228.3
	5th	0.0	0.0	18.0	9.7	0.0	0.0	0.0	0.0	18.0	14.3	24.0	25.2	0.0	0.0	60.0	49.3
	18th	1.4	1.2	4.0	4.0	0.0	0.2	0.0	0.0	349.9	318.8	46.9	46.5	8.0	8.3	410.2	379.0
<b>Central Total</b>		<b>10.3</b>	<b>7.3</b>	<b>22.0</b>	<b>13.7</b>	<b>1.0</b>	<b>0.8</b>	<b>9.0</b>	<b>9.6</b>	<b>886.8</b>	<b>790.8</b>	<b>157.4</b>	<b>133.6</b>	<b>9.0</b>	<b>8.5</b>	<b>1095.6</b>	<b>964.3</b>
<i>Northeast Region</i>																	
	8th	0.0	0.0	1.0	1.4	0.0	0.0	0.0	0.0	42.9	42.0	40.4	32.7	0.0	0.0	84.3	76.1
	13th	0.0	0.3	0.0	0.0	0.0	0.0	0.0	0.0	15.2	10.5	6.8	9.6	7.9	5.5	29.9	25.9
	17th	1.0	0.7	0.0	0.0	0.0	0.0	1.0	1.0	173.3	149.8	65.5	61.4	0.0	0.0	240.8	213.0
	19th	0.2	0.2	0.4	0.2	0.0	0.0	0.0	0.0	50.4	54.0	32.6	36.7	0.1	0.9	83.6	92.0
	20th	0.0	0.6	13.0	8.6	0.0	0.0	0.0	0.0	85.6	55.7	54.2	52.9	96.4	50.8	249.1	168.6
<b>Northeast Total</b>		<b>1.3</b>	<b>1.9</b>	<b>14.4</b>	<b>10.2</b>	<b>0.0</b>	<b>0.0</b>	<b>1.0</b>	<b>1.0</b>	<b>367.4</b>	<b>312.1</b>	<b>199.5</b>	<b>193.3</b>	<b>104.3</b>	<b>57.2</b>	<b>687.8</b>	<b>575.6</b>
<i>Southern Region</i>																	
	3rd	0.0	0.0	0.0	0.0	0.0	0.0	0.0	0.0	7.1	7.9	7.0	6.5	1.0	1.0	15.2	15.4
	4th	3.0	1.1	0.0	0.0	0.0	0.0	106.0	99.8	212.1	174.8	52.0	47.4	1.0	1.0	374.1	324.1
	10th	0.0	0.0	0.0	0.0	2.0	0.7	20.5	24.6	20.6	17.5	16.1	15.8	5.8	5.2	65.0	64.0
	11th	0.0	0.0	0.0	0.0	0.0	0.0	5.0	2.4	9.2	7.6	19.7	22.2	2.0	0.8	35.9	33.0
	12th	0.0	0.0	11.1	2.9	0.0	0.0	7.9	5.1	4.7	4.1	3.0	2.9	0.0	0.0	26.8	15.0
	15th	0.0	0.0	0.0	0.0	0.0	0.0	0.0	0.0	0.8	1.1	5.1	11.9	0.0	0.0	5.8	13.0
	16th	0.0	0.0	0.0	0.0	0.0	0.0	0.0	0.0	10.3	5.2	4.0	6.8	22.6	20.8	36.9	32.8
<b>Southern Total</b>		<b>3.0</b>	<b>1.1</b>	<b>11.1</b>	<b>2.9</b>	<b>2.0</b>	<b>0.7</b>	<b>139.4</b>	<b>131.9</b>	<b>264.9</b>	<b>218.2</b>	<b>106.9</b>	<b>113.6</b>	<b>32.4</b>	<b>28.8</b>	<b>559.7</b>	<b>497.2</b>
<i>Western Region</i>																	
	6th	0.0	0.0	0.0	0.0	0.0	0.0	0.0	0.0	12.3	12.3	1.0	0.2	0.0	0.0	13.3	12.6
	7th	0.0	0.1	6.0	6.7	0.0	0.0	1.0	0.8	18.5	12.9	21.8	23.4	0.0	0.0	47.4	43.9
	9th	0.0	0.0	0.0	0.0	0.0	0.0	0.0	0.0	10.2	7.9	6.3	8.0	0.0	0.0	16.4	15.9
	14th	0.0	0.0	4.8	9.5	0.0	0.0	0.0	0.0	4.7	3.1	2.0	1.7	0.0	0.0	11.5	14.2
	21st	0.0	0.0	0.0	0.2	0.0	0.0	2.0	2.0	36.2	35.5	20.5	17.6	0.0	0.0	58.7	55.3
	22nd	0.0	0.0	0.0	0.0	0.0	0.0	0.0	0.0	10.3	7.1	1.0	0.7	0.0	0.0	11.3	7.8
<b>Western Total</b>		<b>0.0</b>	<b>0.1</b>	<b>10.8</b>	<b>16.4</b>	<b>0.0</b>	<b>0.0</b>	<b>3.0</b>	<b>2.8</b>	<b>92.2</b>	<b>78.8</b>	<b>52.6</b>	<b>51.5</b>	<b>0.0</b>	<b>0.0</b>	<b>158.5</b>	<b>149.7</b>
<b>Statewide Total</b>		<b>14.6</b>	<b>10.4</b>	<b>58.3</b>	<b>43.2</b>	<b>3.0</b>	<b>1.5</b>	<b>152.4</b>	<b>145.4</b>	<b>1611.3</b>	<b>1399.9</b>	<b>516.4</b>	<b>491.9</b>	<b>145.6</b>	<b>94.5</b>	<b>2501.6</b>	<b>2186.8</b>