

March 2017
FY 2016-2017
SB94 JDSAG SUPPLEMENTAL REPORT

Prepared by the Division of Youth Corrections (DYC)
Research and Evaluation Unit
May 2nd, 2017



COLORADO

**Office of Children,
Youth & Families**

Division of Youth Corrections

March 2017 SB94 Supplemental Report

DYC Commitment ADP & New Commitments by Judicial District

Region	JD ¹	2017 Population Estimates ²	ADP ³		New Commitments		
			March 2017	YTD	March 2017	YTD	YTD Rate ⁴
<i>Central Region</i>							
	1st	56,020	79.9	74.9	4	30	5.4
	2nd	62,634	104.3	114.3	4	27	4.3
	5th	10,162	10.0	9.4	0	2	2.0
	18th	121,363	68.4	64.7	5	31	2.6
Central Total		250,179	262.7	263.3	13	90	3.6
<i>Northeast Region</i>							
	8th	32,983	45.7	43.7	4	30	9.1
	13th	8,520	7.0	6.8	0	4	4.7
	17th	71,425	70.2	72.7	4	29	4.1
	19th	36,924	61.4	53.9	7	37	10.0
	20th	32,693	9.4	9.4	1	6	1.8
Northeast Total		182,545	193.7	186.4	16	106	5.8
<i>Southern Region</i>							
	3rd	1,871	1.0	1.1	0	1	5.3
	4th	81,725	82.4	80.2	3	34	4.2
	10th	17,869	36.9	38.8	2	14	7.8
	11th	7,196	6.0	4.6	0	2	2.8
	12th	5,241	8.0	9.0	0	3	5.7
	15th	2,102	3.0	1.3	0	3	14.3
	16th	2,749	0.0	-	0	0	0.0
Southern Total		118,753	137.3	134.9	5	57	4.8
<i>Western Region</i>							
	6th	6,491	7.7	7.2	0	4	6.2
	7th	10,788	7.0	8.0	0	3	2.8
	9th	9,477	6.0	4.8	0	3	3.2
	14th	5,635	2.0	2.6	0	0	0.0
	21st	15,968	41.8	37.4	3	21	13.2
	22nd	3,108	4.0	3.1	0	1	3.2
Western Total		51,467	68.4	63.1	3	32	6.2
Statewide Total		602,944	662.1	647.7	37	285	4.7

¹ JD represents the judicial district in which the client was committed. Regional totals are a sum of their respective judicial districts. Regional totals reported here may differ slightly from those reported in the Monthly Population Report, where region is defined by active caseloads.

² Source: DOLA 2017 Estimates.

³ Due to rounding, totals shown may not be an exact sum of the subtotals.

⁴ Per 10,000 youth in the population.

March 2017 SB94 Supplemental Report

DYC Detention ADP and New Detention Admissions by Judicial District

Region	JD	2017 Population Estimates ¹	ADP		New Admits		YTD New Admit Rate ²
			March 2017	YTD	March 2017	YTD	
<i>Central Region</i>							
	1st	56,020	29.2	22.5	65	531	94.8
	2nd	62,634	49.9	44.6	84	717	114.5
	5th	10,162	1.4	1.3	2	23	22.6
	18th	121,363	42.8	41.0	89	756	62.3
Central Total		250,179	123.3	109.3	240	2,027	81.0
<i>Northeast Region</i>							
	8th	32,983	8.8	10.6	24	218	66.1
	13th	8,520	1.4	1.8	4	42	49.3
	17th	71,425	19.5	22.2	36	371	51.9
	19th	36,924	19.8	20.8	39	407	110.2
	20th	32,693	5.7	7.0	20	156	47.7
Northeast Total		182,545	55.2	62.4	123	1,194	65.4
<i>Southern Region</i>							
	3rd	1,871	0.7	0.6	2	14	74.8
	4th	81,725	46.7	45.9	69	617	75.5
	10th	17,869	11.9	11.6	32	223	124.8
	11th	7,196	2.8	2.7	13	89	123.7
	12th	5,241	0.8	1.5	5	29	55.3
	15th	2,102	2.6	2.5	3	24	114.2
	16th	2,749	1.6	0.9	4	17	61.8
Southern Total		118,753	67.0	65.6	128	1,013	85.3
<i>Western Region</i>							
	6th	6,491	0.0	2.4	0	34	52.4
	7th	10,788	4.2	4.3	3	50	46.3
	9th	9,477	3.3	2.4	3	34	35.9
	14th	5,635	0.1	0.3	1	8	14.2
	21st	15,968	11.4	11.0	20	179	112.1
	22nd	3,108	1.0	0.9	1	16	51.5
Western Total		51,467	20.0	21.2	28	321	62.4
<i>Missing JD or Multiple JDs</i>			<i>1.8</i>	<i>1.1</i>			
Statewide Total		602,944	267.4	259.6	519	4,555	75.5

¹ Source: DOLA 2017 Estimates.

² Per 10,000 youth in the population.

March 2017 SB94 Supplemental Report

DYC Detention LOS by Judicial District				
Region	JD	YTD Detention Releases	YTD LOS (days)	LOS (days) Compared to State AVG
<i>Central Region</i>				
	1st	514	11.0	-4.3
	2nd	726	16.7	1.5
	5th	22	13.2	-2.0
	18th	738	13.7	-1.5
Central Total		2,000	14.1	-1.1
<i>Northeast Region</i>				
	8th	224	13.3	-1.9
	13th	44	11.2	-4.0
	17th	367	15.4	0.2
	19th	402	13.5	-1.8
	20th	154	10.6	-4.6
Northeast Total		1,191	13.6	-1.7
<i>Southern Region</i>				
	3rd	15	11.9	-3.3
	4th	611	18.5	3.3
	10th	222	13.9	-1.3
	11th	86	7.7	-7.5
	12th	27	15.4	0.2
	15th	25	26.1	10.8
	16th	16	13.1	-2.1
Southern Total		1,002	16.5	1.3
<i>Western Region</i>				
	6th	37	18.2	3.0
	7th	47	18.1	2.9
	9th	31	17.7	2.5
	14th	8	9.0	-6.2
	21st	173	15.5	0.2
	22nd	17	13.3	-2.0
Western Total		313	16.1	0.9
Statewide Total		4,526	15.2	-

March 2017 SB94 JDSAG Supplemental Report

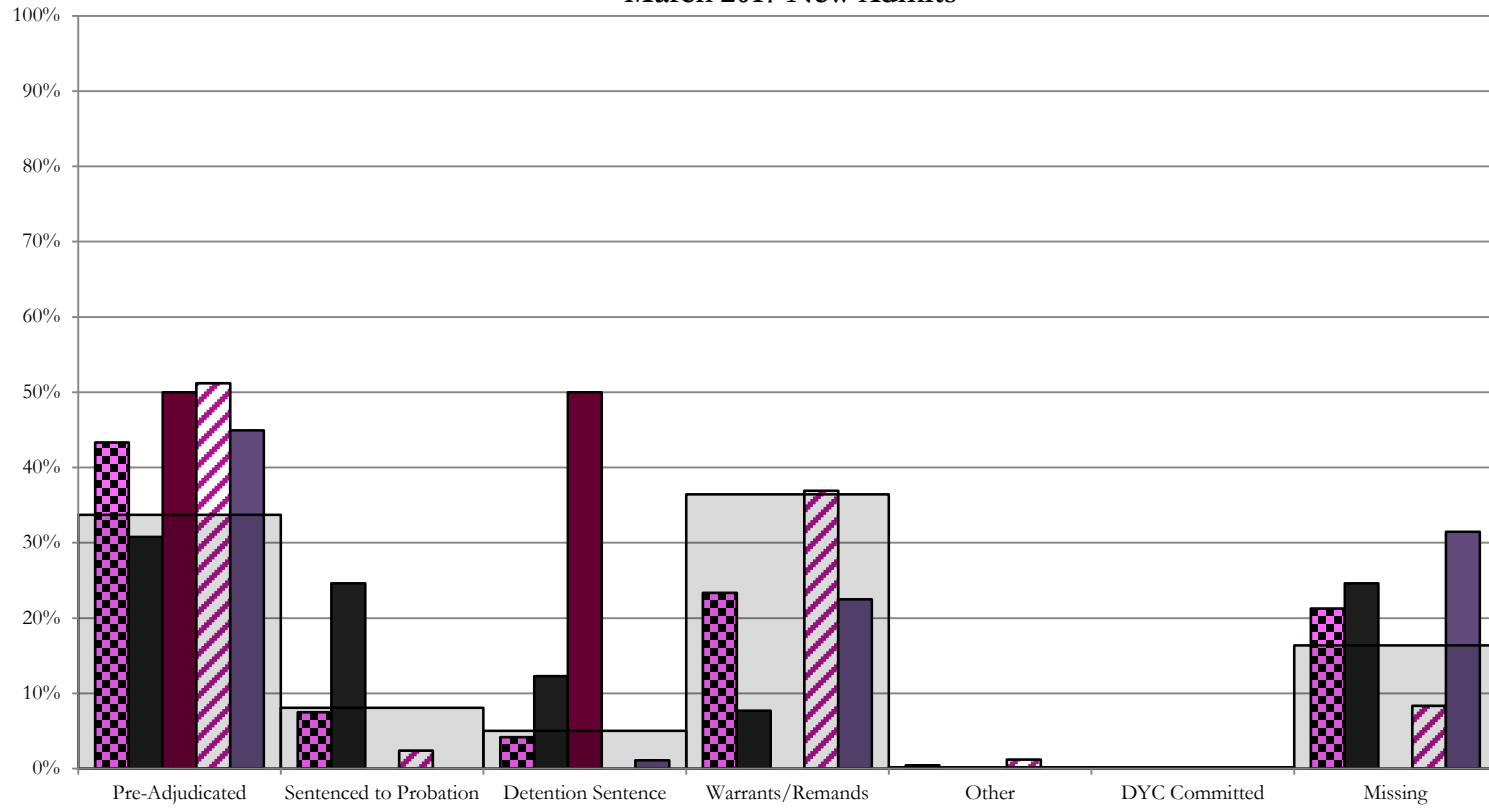
SB94 Reason Detained (RD) by Judicial District

Region	JD	Monthly New Admits	Pre-Adjudicated				Sentenced to Probation				Detention Sentence								Warrants/Remands				Other						DYC Committed		Missing					
			Felony		Misdemeanor		Technical Violator		New Charges		Probation Sentence		Detention Sentence		Valid Court Order (VCO) Truancy		Awaiting DSS (Social Services) Placement		Failure to Appear (FTA)		Failure to Comply (FTC)		Interstate Compact on Juveniles (ICJ) Hold		Immigration Hold		No Bond Hold		Out-of-Country Warrant		Institutional		Parole		Missing	
			#	%	#	%	#	%	#	%	#	%	#	%	#	%	#	%	#	%	#	%	#	%	#	%	#	%	#	%	#	%	#	%	#	%
Central Region																																				
	1st	65	10	15.4%	10	15.4%	14	21.5%	2	3.1%	0	0.0%	8	12.3%	0	0.0%	0	0.0%	2	3.1%	3	4.6%	0	0.0%	0	0.0%	0	0.0%	0	0.0%	0	0.0%	0	0.0%	16	24.6%
	2nd	84	30	35.7%	13	15.5%	1	1.2%	1	1.2%	0	0.0%	0	0.0%	0	0.0%	0	0.0%	11	13.1%	20	23.8%	1	1.2%	0	0.0%	0	0.0%	0	0.0%	0	0.0%	0	0.0%	7	8.3%
	5th	2	1	50.0%	0	0.0%	0	0.0%	0	0.0%	0	0.0%	1	50.0%	0	0.0%	0	0.0%	0	0.0%	0	0.0%	0	0.0%	0	0.0%	0	0.0%	0	0.0%	0	0.0%	0	0.0%	0	0.0%
	18th	89	19	21.3%	21	23.6%	0	0.0%	0	0.0%	0	0.0%	1	1.1%	0	0.0%	0	0.0%	7	7.9%	13	14.6%	0	0.0%	0	0.0%	0	0.0%	0	0.0%	0	0.0%	0	0.0%	28	31.5%
Central Total		240	60	25%	44	18%	15	6.3%	3	1.3%	0	0.0%	10	4.2%	0	0.0%	0	0.0%	20	8%	36	15%	1	0.4%	0	0.0%	0	0.0%	0	0.0%	0	0.0%	0	0.0%	51	21.3%
Northeast Region																																				
	8th	24	1	4.2%	2	8.3%	0	0.0%	0	0.0%	0	0.0%	2	8.3%	0	0.0%	0	0.0%	1	4.2%	14	58.3%	0	0.0%	0	0.0%	0	0.0%	0	0.0%	0	0.0%	0	0.0%	4	16.7%
	13th	4	1	25.0%	0	0.0%	0	0.0%	0	0.0%	0	0.0%	0	0.0%	0	0.0%	0	0.0%	0	0.0%	1	25.0%	0	0.0%	0	0.0%	0	0.0%	0	0.0%	0	0.0%	0	0.0%	2	50.0%
	17th	36	10	27.8%	0	0.0%	0	0.0%	0	0.0%	0	0.0%	0	0.0%	0	0.0%	0	0.0%	3	8.3%	17	47.2%	0	0.0%	0	0.0%	0	0.0%	0	0.0%	0	0.0%	0	0.0%	6	16.7%
	19th	39	3	7.7%	5	12.8%	16	41.0%	0	0.0%	0	0.0%	1	2.6%	1	2.6%	0	0.0%	6	15.4%	4	10.3%	0	0.0%	0	0.0%	0	0.0%	1	2.6%	0	0.0%	2	5.1%		
	20th	20	1	5.0%	1	5.0%	3	15.0%	0	0.0%	0	0.0%	7	35.0%	0	0.0%	0	0.0%	2	10.0%	2	10.0%	0	0.0%	0	0.0%	0	0.0%	0	0.0%	0	0.0%	6	30.0%		
Northeast Total		123	16	13%	8	7%	19	15.4%	0	0.0%	0	0.0%	10	8.1%	1	0.8%	0	0.0%	10	8.1%	38	31%	0	0.0%	0	0.0%	0	0.0%	0	0.0%	1	0.8%	0	0.0%	20	16%
Southern Region																																				
	3rd	2	1	50.0%	0	0.0%	0	0.0%	0	0.0%	0	0.0%	0	0.0%	0	0.0%	1	50.0%	0	0.0%	0	0.0%	0	0.0%	0	0.0%	0	0.0%	0	0.0%	0	0.0%	0	0.0%	0	0.0%
	4th	69	17	24.6%	8	11.6%	1	1.4%	1	1.4%	0	0.0%	0	0.0%	1	1.4%	0	0.0%	7	10.1%	31	44.9%	0	0.0%	0	0.0%	0	0.0%	0	0.0%	0	0.0%	0	0.0%	3	4.3%
	10th	32	2	6.3%	3	9.4%	0	0.0%	0	0.0%	0	0.0%	2	6.3%	0	0.0%	0	0.0%	11	34.4%	13	40.6%	0	0.0%	0	0.0%	0	0.0%	0	0.0%	0	0.0%	1	3.1%		
	11th	13	2	15.4%	1	7.7%	0	0.0%	0	0.0%	0	0.0%	0	0.0%	0	0.0%	0	0.0%	4	30.8%	3	23.1%	0	0.0%	0	0.0%	0	0.0%	0	0.0%	0	0.0%	3	23.1%		
	12th	5	0	0.0%	0	0.0%	0	0.0%	0	0.0%	0	0.0%	0	0.0%	0	0.0%	1	20.0%	3	60.0%	0	0.0%	0	0.0%	0	0.0%	0	0.0%	0	0.0%	0	0.0%	1	20.0%		
	15th	3	0	0.0%	0	0.0%	1	33.3%	0	0.0%	0	0.0%	1	33.3%	0	0.0%	0	0.0%	0	0.0%	0	0.0%	0	0.0%	0	0.0%	0	0.0%	0	0.0%	0	0.0%	1	33.3%		
	16th	4	3	75.0%	1	25.0%	0	0.0%	0	0.0%	0	0.0%	0	0.0%	0	0.0%	0	0.0%	0	0.0%	0	0%	0	0.0%	0	0.0%	0	0.0%	0	0.0%	0	0.0%	0	0.0%		
Southern Total		128	25	20%	13	10%	2	1.6%	1	0.8%	0	0.0%	3	2.3%	1	0.8%	1	0.8%	26	20%	47	37%	0	0.0%	0	0.0%	0	0.0%	0	0.0%	0	0.0%	0	0.0%	9	7%
Western Region																																				
	6th	0	0	0.0%	0	0.0%	0	0.0%	0	0.0%	0	0.0%	0	0.0%	0	0.0%	0	0.0%	0	0.0%	0	0.0%	0	0.0%	0	0.0%	0	0.0%	0	0.0%	0	0.0%	0	0.0%	0	0%
	7th	3	0	0.0%	0	0.0%	0	0.0%	0	0.0%	0	0.0%	0	0.0%	0	0.0%	1	33.3%	0	0.0%	0	0.0%	0	0.0%	0	0.0%	0	0.0%	0	0.0%	0	0.0%	0	0.0%	2	66.7%
	9th	3	1	33.3%	1	33.3%	1	33.3%	0	0.0%	0	0.0%	0	0.0%	0	0.0%	0	0.0%	0	0.0%	0	0.0%	0	0.0%	0	0.0%	0	0.0%	0	0.0%	0	0.0%	0	0.0%	0	0.0%
	14th	1	0	0.0%	0	0.0%	0	0.0%	0	0.0%	0	0.0%	0	0.0%	0	0.0%	0	0.0%	1	100.0%	0	0.0%	0	0.0%	0	0.0%	0	0.0%	0	0.0%	0	0.0%	0	0.0%	0	0%
	21st	20	4	20.0%	2	10.0%	0	0.0%	1	5.0%	0	0.0%	0	0.0%	0	0.0%	2	10.0%	8	40.0%	0	0.0%	0	0.0%	0	0.0%	0	0.0%	0	0.0%	0	0.0%	3	15.0%		
	22nd	1	0	0.0%	1	100.0%	0	0.0%	0	0.0%	0	0.0%	0	0.0%	0	0.0%	0	0.0%	0	0.0%	0	0.0%	0	0.0%	0	0.0%	0	0.0%	0	0.0%	0	0.0%	0	0.0%		
Western Total		28	5	18%	4	14.3%	1	3.6%	1	3.6%	0	0.0%	0	0.0%	0	0.0%	3	10.7%	9	32%	0	0.0%	0	0.0%	0	0.0%	0	0.0%	0	0.0%	0	0.0%	5	18%		
Individual RD Totals		519	106	20%	69	13%	37	7.1%	5	1.0%	0	0.0%	23	4.4%	2	0.4%	1	0.2%	59	11%	130	25%	1	0.2%	0	0.0%	0	0.0%	0	0.0%	1	0.2%	0	0.0%	85	16%
Statewide Totals		519	175	33.7%	42	8.1%	26	5.0%	0	0.0%	26	5.0%	2	0.4%	1	0.2%	189	36.4%	1	0.2%	0	0.0%	0	0.0%	0	0.0%	1	0.2%	0	0.0%	85	16%				

Central Region

SB94 Reason Detained by Judicial District

March 2017 New Admits



■ CENTRAL REGION, 240 New Admits

■ 5th JD, 2 New Admits

■ 18th JD, 89 New Admits

■ 1st JD, 65 New Admits

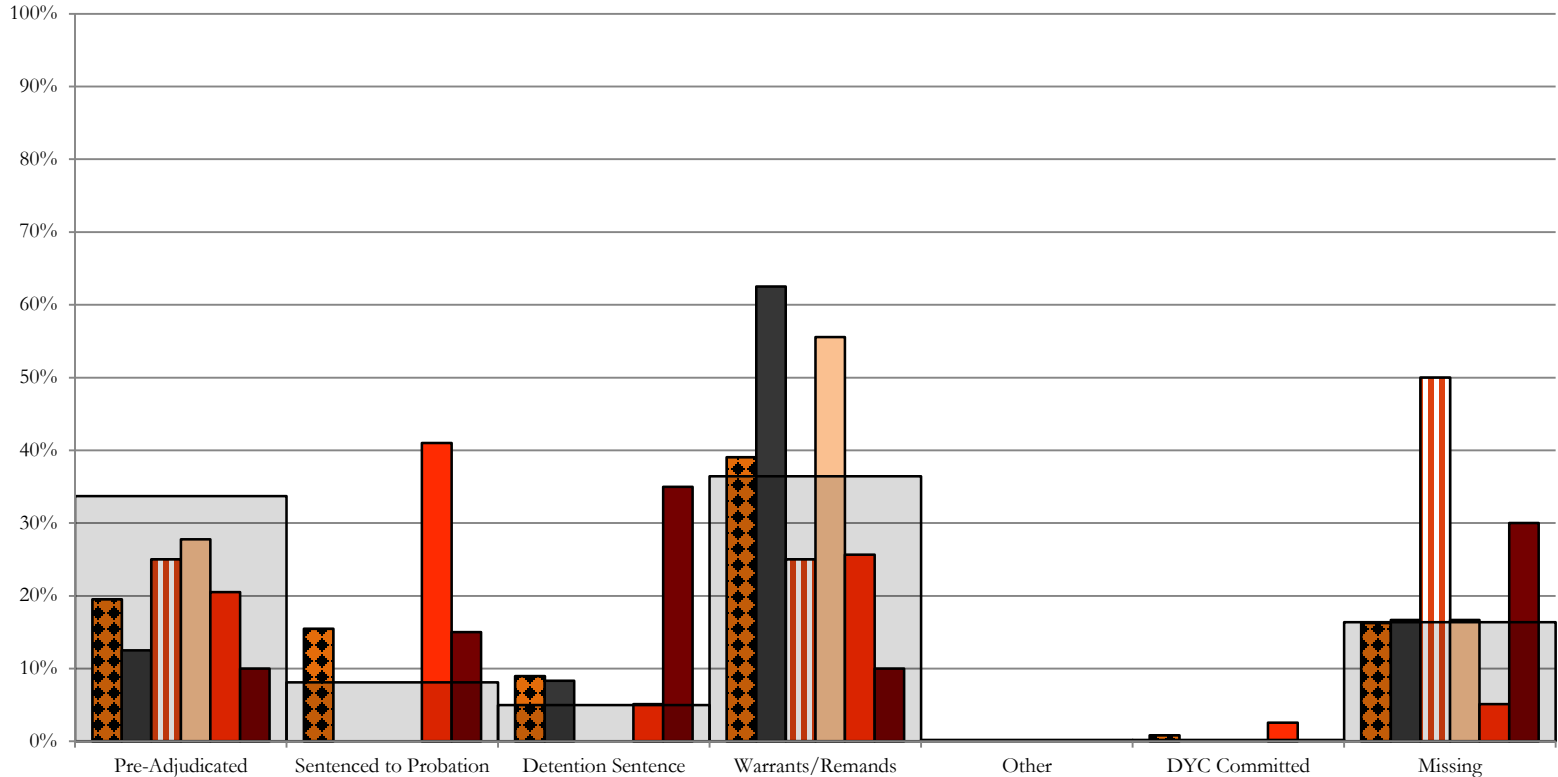
■ 2nd JD, 84 New Admits

■ STATEWIDE, 519 New Admits

Northeast Region

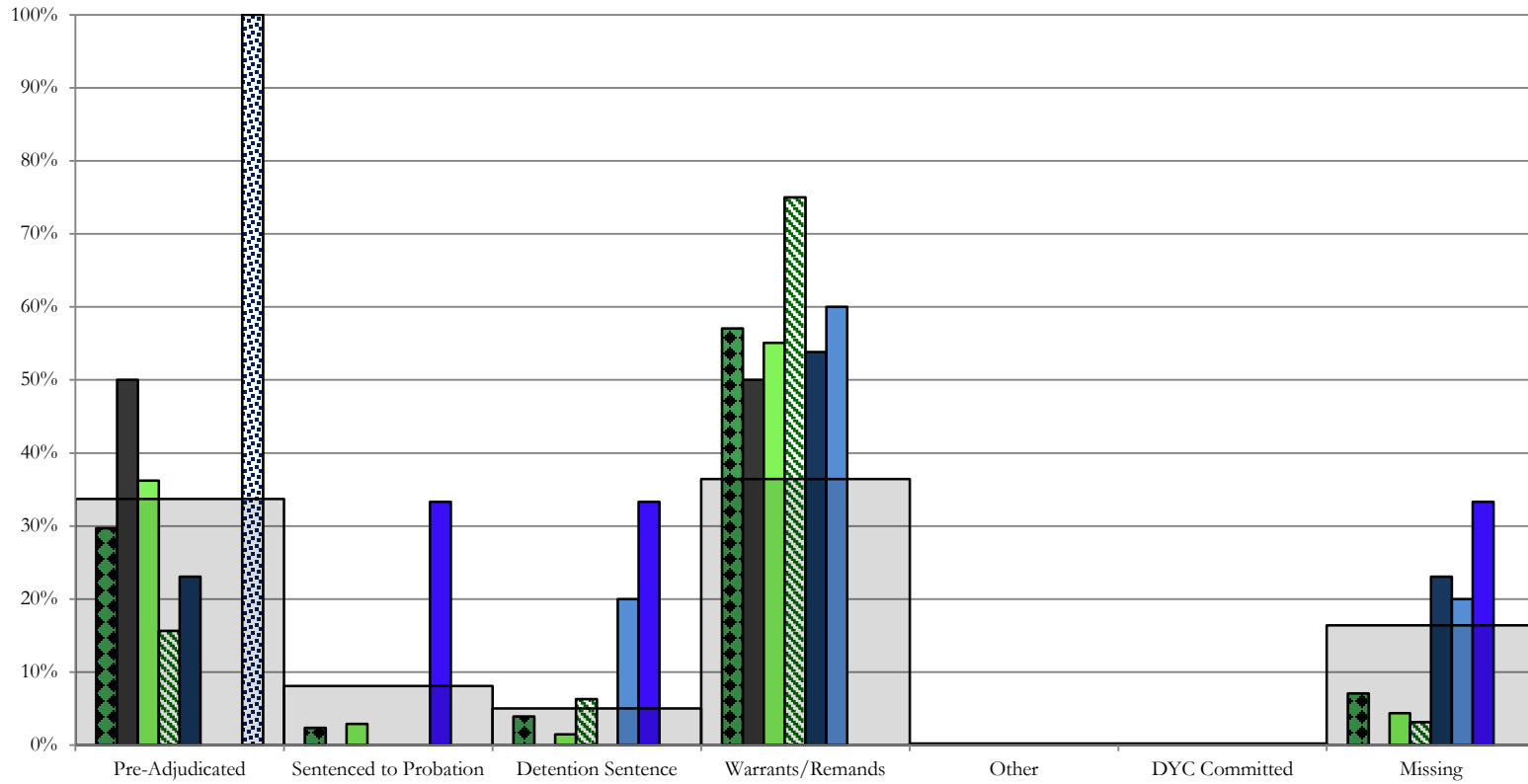
SB94 Reason Detained by Judicial District

March 2017 New Admits



- NORTHEAST REGION, 123 New Admits
- 8th JD, 24 New Admits
- 13th JD, 4 New Admits
- 17th JD, 36 New Admits
- 19th JD, 39 New Admits
- 20th JD, 20 New Admits
- STATEWIDE, 519 New Admits

Southern Region SB94 Reason Detained by Judicial District March 2017 New Admits



■ SOUTHERN REGION, 128 New Admits

■ 4th JD, 69 New Admits

■ 11th JD, 13 New Admits

■ 15th JD, 3 New Admits

■ STATEWIDE, 519 New Admits

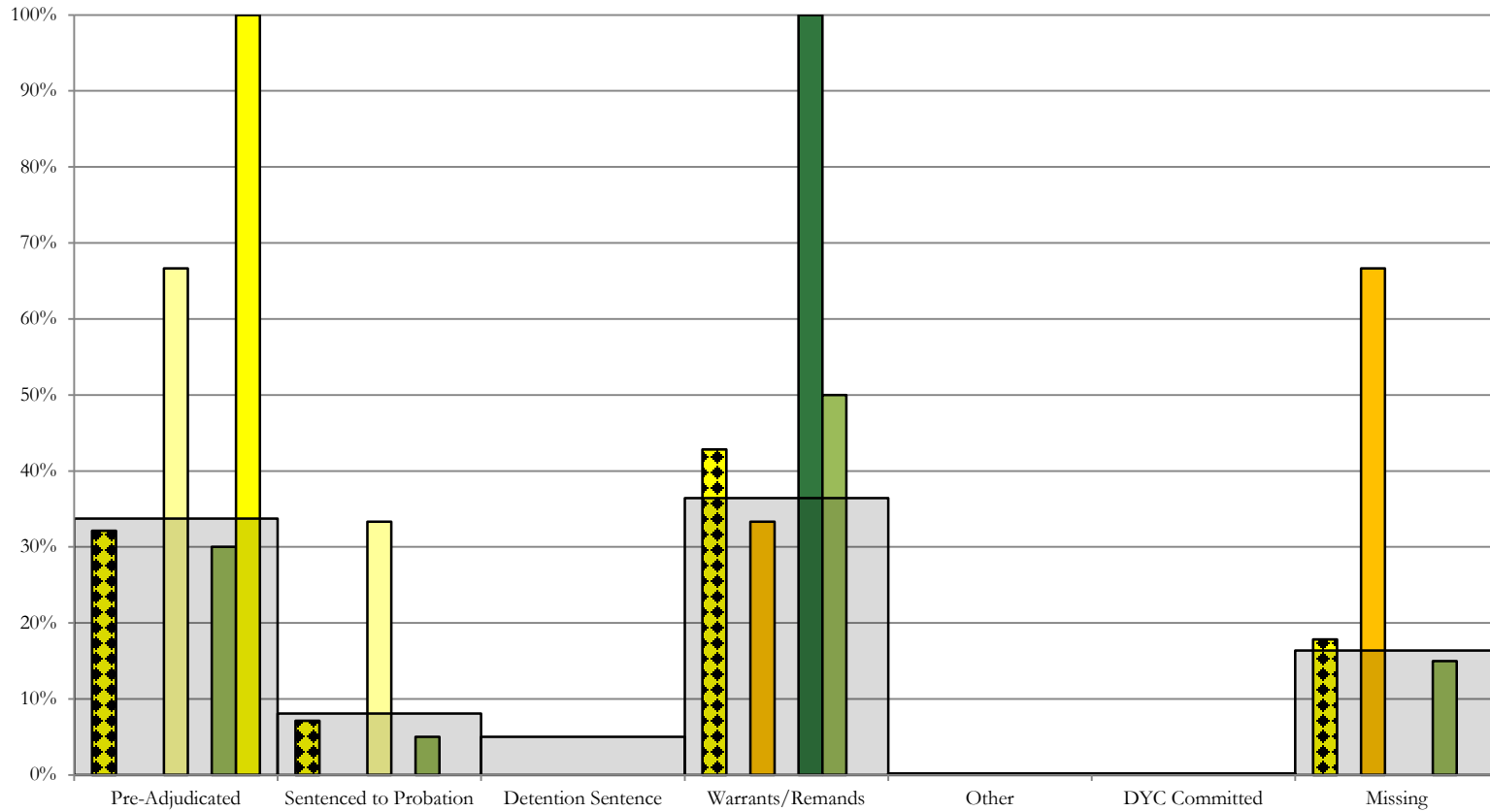
■ 3rd JD, 2 New Admits

■ 10th JD, 32 New Admits

■ 12th JD, 5 New Admits

■ 16th JD, 4 New Admits

Western Region SB94 Reason Detained by Judicial District March 2017 New Admits



■ WESTERN REGION, 28 New Admits

■ 7th JD, 3 New Admits

■ 14th JD, 1 New Admits

■ 22nd JD, 1 New Admits

■ 6th JD, 0 New Admits

■ 9th JD, 3 New Admits

■ 21st JD, 20 New Admits

■ STATEWIDE, 519 New Admits

March 2017 SB94 Supplemental Report

DYC Detention Maximum Youth Served by Judicial District¹

Region	JD	Detention Capacity	Detention ADP		Maximum Youth Served on a Single Day ^{2,3}			
			March 2017	YTD	March 2017		YTD	
					Number of Youth	% of Detention Capacity	Number of Youth	% of Detention Capacity
<i>Central Region</i>								
	1st	37	29.2	22.5	38	102.7%	38	102.7%
	2nd	64	49.9	44.6	55	85.9%	59	92.2%
	5th	4	1.4	1.3	2	50.0%	4	100.0%
	18th	61	42.8	41.0	45	73.8%	59	96.7%
Central Region		166	123.3	109.3	132	79.5%	135	81.3%
<i>Northeast Region</i>								
	8th	21	8.8	10.6	12	57.1%	19	90.5%
	13th	5	1.4	1.8	2	40.0%	5	100.0%
	17th	30	19.5	22.2	25	83.3%	30	100.0%
	19th	25	19.8	20.8	26	104.0%	32	128.0%
	20th	13	5.7	7.0	11	84.6%	13	100.0%
Northeast Region		94	55.2	62.4	62	66.0%	76	80.9%
<i>Southern Region</i>								
	3rd	2	0.7	0.6	2	100.0%	3	150.0%
	4th	51	46.7	45.9	51	100.0%	53	103.9%
	10th	13	11.9	11.6	16	123.1%	19	146.2%
	11th	8	2.8	2.7	6	75.0%	6	75.0%
	12th	4	0.8	1.5	3	75.0%	4	100.0%
	15th	2	2.6	2.5	4	200.0%	6	300.0%
	16th	3	1.6	0.9	3	100.0%	4	133.3%
Southern Region		83	67.0	65.6	75	90.4%	77	92.8%
<i>Western Region</i>								
	6th	5	0.0	2.4	1	20.0%	7	140.0%
	7th	7	4.2	4.3	5	71.4%	9	128.6%
	9th	6	3.3	2.4	5	83.3%	5	83.3%
	14th	3	0.1	0.3	1	33.3%	2	66.7%
	21st	14	11.4	11.0	14	100.0%	18	128.6%
	22nd	4	1.0	0.9	4	100.0%	4	100.0%
Western Region		39	20.0	21.2	24	61.5%	31	79.5%
<i>Missing JD or Multiple JDs</i>			1.8	1.1				
Statewide		382	267.4	259.6	281	73.6%	300	78.5%

¹ Maximum youth served is the highest number of youth in detention on a single day during the month or fiscal year.

² Regional figures are not the sum of judicial districts, but represent the maximum count on one day for the entire region.

³ State figures are not the sum of regional figures, but represent the maximum count on one day for the entire state.

March 2017 SB94 Supplemental Report

SB94 Community ADP by Judicial District

Region	JD	Committed		Diversion		ICJ		Municipal		Pre-Adjudicated		Sentenced		VCO		Total	
		March	YTD	March	YTD	March	YTD	March	YTD	March	YTD	March	YTD	March	YTD	March	YTD
<i>Central Region</i>																	
	1st	0.5	0.5	0.0	0.0	0.0	0.0	9.0	9.6	318.6	268.8	25.7	20.3	1.0	0.1	354.8	299.4
	2nd	9.0	5.3	0.0	0.0	1.0	0.5	0.0	0.1	174.2	183.1	52.4	37.9	0.0	0.0	236.6	226.8
	5th	0.0	0.0	18.0	8.8	0.0	0.0	0.0	0.0	16.0	13.9	24.3	25.4	0.0	0.0	58.3	48.1
	18th	2.7	1.5	4.0	4.0	0.0	0.2	0.0	0.0	354.7	318.0	47.9	46.4	8.0	8.3	417.3	378.5
Central Total		12.1	7.3	22.0	12.8	1.0	0.7	9.0	9.7	863.5	783.9	150.2	130.0	9.0	8.4	1066.8	952.8
<i>Northeast Region</i>																	
	8th	0.0	0.0	1.0	1.4	0.0	0.0	0.0	0.0	43.4	41.9	39.3	31.4	0.0	0.0	83.7	74.7
	13th	0.0	0.3	0.0	0.0	0.0	0.0	0.0	0.0	8.5	10.0	8.7	9.9	7.0	5.2	24.2	25.5
	17th	1.0	0.7	0.0	0.0	0.0	0.0	1.0	1.0	150.4	145.4	64.7	60.7	0.0	0.0	217.0	207.8
	19th	0.1	0.2	1.0	0.2	0.0	0.0	0.0	0.0	47.1	54.5	37.6	37.1	0.7	1.0	86.5	93.0
	20th	0.0	0.7	10.6	8.0	0.0	0.0	0.0	0.0	66.5	50.4	50.5	52.0	87.6	45.4	215.3	156.5
Northeast Total		1.1	1.9	12.6	9.6	0.0	0.0	1.0	1.0	315.8	302.2	200.9	191.2	95.4	51.6	626.7	557.5
<i>Southern Region</i>																	
	3rd	0.0	0.0	0.0	0.0	0.0	0.0	0.0	0.0	9.1	8.0	7.0	6.4	1.0	1.0	17.1	15.4
	4th	1.0	0.9	0.0	0.0	0.0	0.0	102.0	98.9	203.2	173.0	45.3	47.1	1.0	1.0	352.6	320.9
	10th	0.0	0.0	0.0	0.0	2.2	0.6	24.5	25.2	16.7	17.0	18.1	15.5	6.4	5.2	67.9	63.5
	11th	0.0	0.0	0.0	0.0	0.0	0.0	6.0	2.3	7.4	6.8	21.9	23.0	2.0	0.7	37.4	32.9
	12th	0.0	0.0	2.0	0.2	0.0	0.0	2.8	3.7	10.1	6.1	4.0	2.9	0.0	0.0	19.0	12.8
	15th	0.0	0.0	0.0	0.0	0.0	0.0	0.0	0.0	0.0	1.1	4.6	12.7	0.0	0.0	4.6	13.8
	16th	0.0	0.0	0.0	0.0	0.0	0.0	0.0	0.0	10.1	4.6	4.0	7.1	22.1	20.6	36.2	32.3
Southern Total		1.0	0.9	2.0	0.2	2.2	0.6	135.4	130.2	256.7	216.6	104.9	114.8	32.5	28.4	534.7	491.8
<i>Western Region</i>																	
	6th	0.0	0.0	0.0	0.1	0.0	0.0	0.0	0.0	10.4	12.3	0.3	0.1	0.0	0.0	10.7	12.5
	7th	0.0	0.1	6.0	6.7	0.0	0.0	1.0	0.8	16.4	12.3	24.6	23.5	0.0	0.0	48.1	43.5
	9th	0.0	0.0	0.0	0.0	0.0	0.0	0.0	0.0	9.8	7.6	6.5	8.2	0.0	0.0	16.3	15.8
	14th	0.0	0.0	5.0	10.0	0.0	0.0	0.0	0.0	5.1	3.7	2.4	1.6	0.0	0.0	12.5	15.3
	21st	0.0	0.0	0.0	0.2	0.0	0.0	2.0	2.0	34.9	35.7	19.7	17.3	0.0	0.0	56.6	55.2
	22nd	0.0	0.0	0.0	0.0	0.0	0.0	0.0	0.0	7.8	6.7	0.7	0.7	0.0	0.0	8.6	7.4
Western Total		0.0	0.1	11.0	17.0	0.0	0.0	3.0	2.8	84.5	78.3	54.2	51.4	0.0	0.0	152.7	149.6
Statewide Total		14.3	10.2	47.6	39.6	3.2	1.4	148.4	143.6	1520.4	1381.0	510.3	487.4	136.8	88.4	2381.0	2151.7