

February 2017  
FY 2016-2017  
SB94 JDSAG SUPPLEMENTAL REPORT

Prepared by the Division of Youth Corrections (DYC)  
Research and Evaluation Unit  
April 5th, 2017



**COLORADO**

**Office of Children,  
Youth & Families**

Division of Youth Corrections

## February 2017 SB94 Supplemental Report

### DYC Commitment ADP & New Commitments by Judicial District

Region	JD <sup>1</sup>	2017 Population Estimates <sup>2</sup>	ADP <sup>3</sup>		New Commitments		
			February 2017	YTD	February 2017	YTD	YTD Rate <sup>4</sup>
<i>Central Region</i>							
	1st	56,020	76.4	73.7	5	26	4.6
	2nd	62,634	104.2	115.5	1	23	3.7
	5th	10,162	10.0	9.3	0	2	2.0
	18th	121,363	62.7	64.0	7	26	2.1
<b>Central Total</b>		<b>250,179</b>	<b>253.2</b>	<b>262.5</b>	<b>13</b>	<b>77</b>	<b>3.1</b>
<i>Northeast Region</i>							
	8th	32,983	45.3	43.3	3	26	7.9
	13th	8,520	7.4	6.7	0	4	4.7
	17th	71,425	71.8	73.6	4	25	3.5
	19th	36,924	58.5	52.9	3	29	7.9
	20th	32,693	9.3	9.3	0	5	1.5
<b>Northeast Total</b>		<b>182,545</b>	<b>192.4</b>	<b>185.9</b>	<b>10</b>	<b>89</b>	<b>4.9</b>
<i>Southern Region</i>							
	3rd	1,871	1.0	1.1	0	1	5.3
	4th	81,725	81.4	79.7	3	31	3.8
	10th	17,869	35.4	39.1	0	11	6.2
	11th	7,196	4.8	4.4	1	2	2.8
	12th	5,241	7.2	9.1	0	3	5.7
	15th	2,102	2.2	1.0	1	3	14.3
	16th	2,749	-	-	0	0	0.0
<b>Southern Total</b>		<b>118,753</b>	<b>131.9</b>	<b>134.4</b>	<b>5</b>	<b>51</b>	<b>4.3</b>
<i>Western Region</i>							
	6th	6,491	7.0	7.1	0	4	6.2
	7th	10,788	7.0	8.2	0	3	2.8
	9th	9,477	6.0	4.6	0	3	3.2
	14th	5,635	2.0	2.7	0	0	0.0
	21st	15,968	38.9	36.8	4	18	11.3
	22nd	3,108	4.0	3.0	0	1	3.2
<b>Western Total</b>		<b>51,467</b>	<b>64.9</b>	<b>62.4</b>	<b>4</b>	<b>29</b>	<b>5.6</b>
<b>Statewide Total</b>		<b>602,944</b>	<b>642.4</b>	<b>645.3</b>	<b>32</b>	<b>246</b>	<b>4.1</b>

<sup>1</sup> JD represents the judicial district in which the client was committed. Regional totals are a sum of their respective judicial districts. Regional totals reported here may differ slightly from those reported in the Monthly Population Report, where region is defined by active caseloads.

<sup>2</sup> Source: DOLA 2017 Estimates.

<sup>3</sup> Due to rounding, totals shown may not be an exact sum of the subtotals.

<sup>4</sup> Per 10,000 youth in the population.

## February 2017 SB94 Supplemental Report

### DYC Detention ADP and New Detention Admissions by Judicial District

Region	JD	2017 Population Estimates <sup>1</sup>	ADP		New Admits		
			February 2017	YTD	February 2017	YTD	YTD New Admit Rate <sup>2</sup>
<i>Central Region</i>							
	1st	56,020	29.0	21.8	57	467	83.4
	2nd	62,634	46.9	43.9	94	633	101.1
	5th	10,162	1.5	1.3	3	21	20.7
	18th	121,363	52.5	40.7	78	668	55.0
<b>Central Total</b>		<b>250,179</b>	<b>129.8</b>	<b>107.7</b>	<b>232</b>	<b>1,789</b>	<b>71.5</b>
<i>Northeast Region</i>							
	8th	32,983	9.3	10.9	16	194	58.8
	13th	8,520	2.2	1.9	6	38	44.6
	17th	71,425	23.3	22.5	38	335	46.9
	19th	36,924	21.1	20.9	38	368	99.7
	20th	32,693	8.3	7.2	20	136	41.6
<b>Northeast Total</b>		<b>182,545</b>	<b>64.2</b>	<b>63.3</b>	<b>118</b>	<b>1,071</b>	<b>58.7</b>
<i>Southern Region</i>							
	3rd	1,871	0.5	0.6	2	12	64.1
	4th	81,725	47.8	45.8	56	548	67.1
	10th	17,869	10.1	11.5	17	191	106.9
	11th	7,196	2.4	2.7	8	76	105.6
	12th	5,241	0.2	1.6	0	24	45.8
	15th	2,102	1.7	2.5	2	21	99.9
	16th	2,749	1.9	0.8	2	13	47.3
<b>Southern Total</b>		<b>118,753</b>	<b>64.7</b>	<b>65.4</b>	<b>87</b>	<b>885</b>	<b>74.5</b>
<i>Western Region</i>							
	6th	6,491	1.1	2.7	0	34	52.4
	7th	10,788	5.3	4.3	4	47	43.6
	9th	9,477	3.0	2.3	6	31	32.7
	14th	5,635	1.0	0.3	1	7	12.4
	21st	15,968	13.9	10.9	16	159	99.6
	22nd	3,108	1.5	0.8	4	15	48.3
<b>Western Total</b>		<b>51,467</b>	<b>25.7</b>	<b>21.3</b>	<b>31</b>	<b>293</b>	<b>56.9</b>
<i>Missing JD or Multiple JDs</i>			<i>0.4</i>	<i>1.0</i>			
<b>Statewide Total</b>		<b>602,944</b>	<b>284.8</b>	<b>258.8</b>	<b>468</b>	<b>4,038</b>	<b>67.0</b>

<sup>1</sup> Source: DOLA 2017 Estimates.

<sup>2</sup> Per 10,000 youth in the population.

## February 2017 SB94 Supplemental Report

### DYC Detention LOS by Judicial District

Region	JD	YTD Detention Releases	YTD LOS (days)	LOS (days) Compared to State AVG
<i>Central Region</i>				
	1st	442	10.8	-4.4
	2nd	635	16.9	1.8
	5th	21	13.8	-1.4
	18th	648	13.4	-1.8
<b>Central Total</b>		<b>1,746</b>	<b>14.0</b>	<b>-1.1</b>
<i>Northeast Region</i>				
	8th	201	14.0	-1.2
	13th	39	10.7	-4.5
	17th	332	14.9	-0.3
	19th	360	13.3	-1.9
	20th	129	10.9	-4.3
<b>Northeast Total</b>		<b>1,061</b>	<b>13.5</b>	<b>-1.7</b>
<i>Southern Region</i>				
	3rd	12	13.1	-2.1
	4th	538	18.4	3.2
	10th	193	13.9	-1.3
	11th	75	7.5	-7.7
	12th	26	15.9	0.8
	15th	23	27.7	12.5
	16th	12	9.8	-5.4
<b>Southern Total</b>		<b>879</b>	<b>16.4</b>	<b>1.3</b>
<i>Western Region</i>				
	6th	36	17.9	2.7
	7th	44	18.0	2.8
	9th	28	18.0	2.8
	14th	7	9.9	-5.3
	21st	157	15.7	0.5
	22nd	13	12.4	-2.8
<b>Western Total</b>		<b>285</b>	<b>16.3</b>	<b>1.1</b>
<b>Statewide Total</b>		<b>3,990</b>	<b>15.2</b>	<b>-</b>

**February 2017  
SB94 JDSAG Supplemental Report**

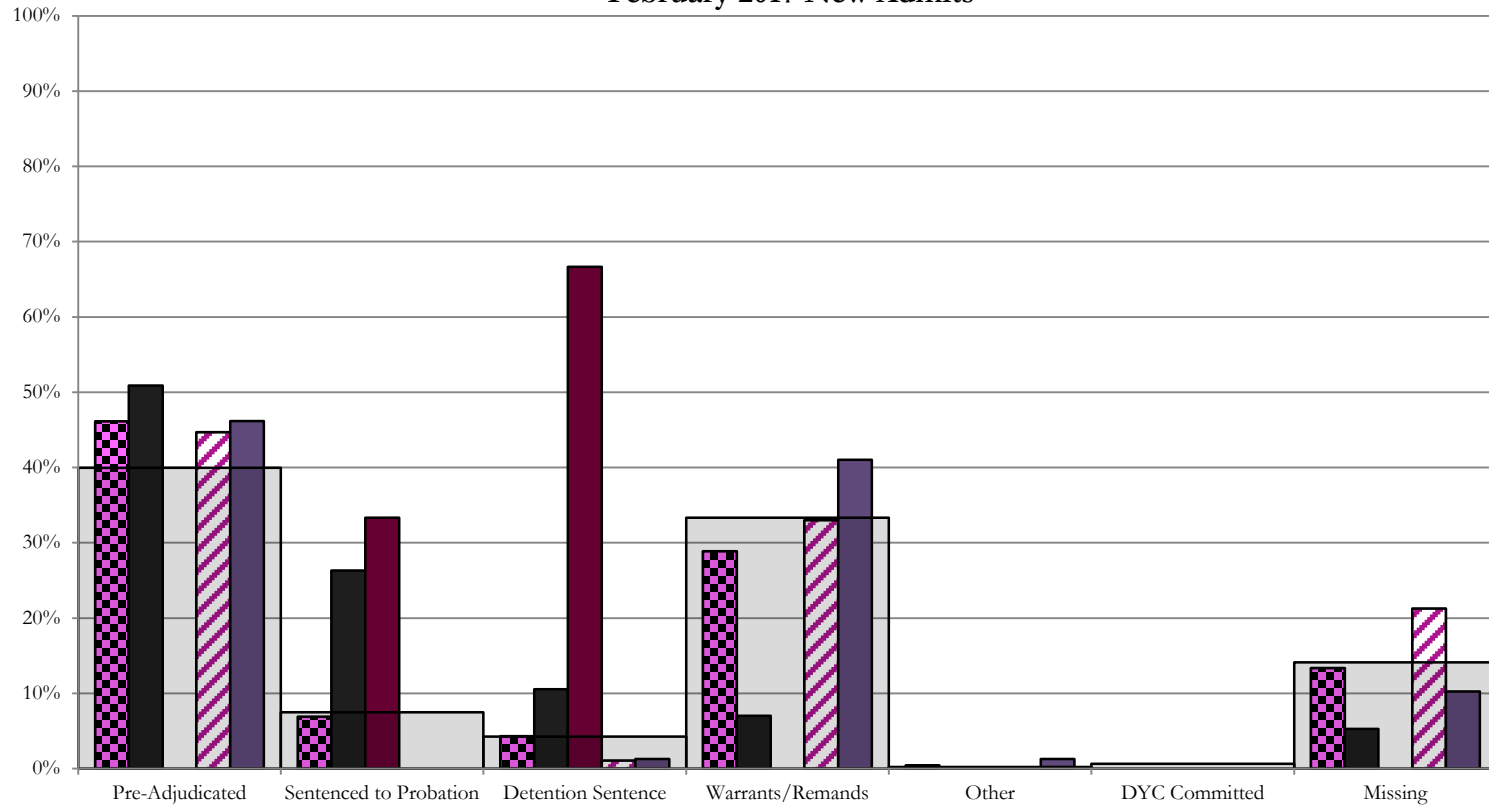
**SB94 Reason Detained (RD) by Judicial District**

Region	JD	Monthly New Admits	Pre-Adjudicated				Sentenced to Probation				Detention Sentence								Warrants/Remands				Other						DYC Committed		Missing							
			Felony		Misdemeanor		Technical Violator		New Charges		Probation Sentence		Detention Sentence		Valid Court Order (VCO) Truancy		Awaiting DSS (Social Services) Placement		Failure to Appear (FTA)		Failure to Comply (FTC)		Interstate Compact on Juveniles (ICJ) Hold		Immigration Hold		No Bond Hold		Out-of-Country Warrant		Institutional		Parole		Missing			
			#	%	#	%	#	%	#	%	#	%	#	%	#	%	#	%	#	%	#	%	#	%	#	%	#	%	#	%	#	%	#	%	#	%		
<b>Central Region</b>																																						
	1st	57	19	33.3%	10	17.5%	14	24.6%	1	1.8%	0	0.0%	6	10.5%	0	0.0%	0	0.0%	4	7.0%	0	0.0%	0	0.0%	0	0.0%	0	0.0%	0	0.0%	0	0.0%	0	0.0%	3	5.3%		
	2nd	94	37	39.4%	5	5.3%	0	0.0%	0	0.0%	0	0.0%	1	1.1%	0	0.0%	0	0.0%	8	8.5%	23	24.5%	0	0.0%	0	0.0%	0	0.0%	0	0.0%	0	0.0%	0	0.0%	0	0.0%	20	21.3%
	5th	3	0	0.0%	0	0.0%	1	33.3%	0	0.0%	0	0.0%	2	66.7%	0	0.0%	0	0.0%	0	0.0%	0	0.0%	0	0.0%	0	0.0%	0	0.0%	0	0.0%	0	0.0%	0	0.0%	0	0.0%	0	0.0%
	18th	78	17	21.8%	19	24.4%	0	0.0%	0	0.0%	0	0.0%	1	1.3%	0	0.0%	0	0.0%	8	10.3%	24	30.8%	1	1.3%	0	0.0%	0	0.0%	0	0.0%	0	0.0%	0	0.0%	0	0.0%	8	10.3%
<b>Central Total</b>		<b>232</b>	<b>73</b>	<b>31%</b>	<b>34</b>	<b>15%</b>	<b>15</b>	<b>6.5%</b>	<b>1</b>	<b>0.4%</b>	<b>0</b>	<b>0.0%</b>	<b>10</b>	<b>4.3%</b>	<b>0</b>	<b>0.0%</b>	<b>0</b>	<b>0.0%</b>	<b>20</b>	<b>9%</b>	<b>47</b>	<b>20%</b>	<b>1</b>	<b>0.4%</b>	<b>0</b>	<b>0.0%</b>	<b>0</b>	<b>0.0%</b>	<b>0</b>	<b>0.0%</b>	<b>0</b>	<b>0.0%</b>	<b>0</b>	<b>0.0%</b>	<b>31</b>	<b>13.4%</b>		
<b>Northeast Region</b>																																						
	8th	16	5	31.3%	3	18.8%	0	0.0%	0	0.0%	0	0.0%	2	12.5%	0	0.0%	0	0.0%	1	6.3%	4	25.0%	0	0.0%	0	0.0%	0	0.0%	0	0.0%	0	0.0%	0	0.0%	0	0.0%	1	6.3%
	13th	6	1	16.7%	1	16.7%	0	0.0%	0	0.0%	0	0.0%	0	0.0%	1	16.7%	0	0.0%	1	16.7%	1	16.7%	0	0.0%	0	0.0%	0	0.0%	0	0.0%	0	0.0%	0	0.0%	0	0.0%	1	16.7%
	17th	38	8	21.1%	3	7.9%	0	0.0%	0	0.0%	0	0.0%	0	0.0%	0	0.0%	0	0.0%	5	13.2%	12	31.6%	0	0.0%	0	0.0%	0	0.0%	0	0.0%	1	2.6%	0	0.0%	9	23.7%		
	19th	38	5	13.2%	6	15.8%	9	23.7%	0	0.0%	0	0.0%	2	5.3%	0	0.0%	0	0.0%	0	0.0%	16	42.1%	0	0.0%	0	0.0%	0	0.0%	0	0.0%	0	0.0%	0	0.0%	0	0.0%	0	0.0%
	20th	20	1	5.0%	4	20.0%	0	0.0%	0	0.0%	0	0.0%	1	5.0%	0	0.0%	0	0.0%	0	0.0%	2	10.0%	0	0.0%	0	0.0%	0	0.0%	0	0.0%	0	0.0%	0	0.0%	0	0.0%	12	60.0%
<b>Northeast Total</b>		<b>118</b>	<b>20</b>	<b>17%</b>	<b>17</b>	<b>14%</b>	<b>9</b>	<b>7.6%</b>	<b>0</b>	<b>0.0%</b>	<b>0</b>	<b>0.0%</b>	<b>5</b>	<b>4.2%</b>	<b>1</b>	<b>0.8%</b>	<b>0</b>	<b>0.0%</b>	<b>7</b>	<b>5.9%</b>	<b>35</b>	<b>30%</b>	<b>0</b>	<b>0.0%</b>	<b>0</b>	<b>0.0%</b>	<b>0</b>	<b>0.0%</b>	<b>0</b>	<b>0.0%</b>	<b>0</b>	<b>0.0%</b>	<b>1</b>	<b>0.8%</b>	<b>0</b>	<b>0.0%</b>	<b>23</b>	<b>19%</b>
<b>Southern Region</b>																																						
	3rd	2	0	0.0%	1	50.0%	1	50.0%	0	0.0%	0	0.0%	0	0.0%	0	0.0%	0	0.0%	0	0.0%	0	0.0%	0	0.0%	0	0.0%	0	0.0%	0	0.0%	0	0.0%	0	0.0%	0	0.0%	0	0.0%
	4th	56	16	28.6%	7	12.5%	0	0.0%	5	8.9%	0	0.0%	0	0.0%	2	3.6%	0	0.0%	1	1.8%	22	39.3%	0	0.0%	0	0.0%	0	0.0%	1	1.8%	1	1.8%	1	1.8%	1	1.8%	1	1.8%
	10th	17	5	29.4%	1	5.9%	0	0.0%	0	0.0%	0	0.0%	1	5.9%	0	0.0%	0	0.0%	2	11.8%	7	41.2%	0	0.0%	0	0.0%	0	0.0%	0	0.0%	0	0.0%	0	0.0%	0	0.0%	1	5.9%
	11th	8	1	12.5%	1	12.5%	0	0.0%	0	0.0%	0	0.0%	0	0.0%	0	0.0%	0	0.0%	1	12.5%	0	0.0%	0	0.0%	0	0.0%	0	0.0%	0	0.0%	0	0.0%	0	0.0%	5	62.5%		
	12th	0	0	0.0%	0	0.0%	0	0.0%	0	0.0%	0	0.0%	0	0.0%	0	0.0%	0	0.0%	0	0.0%	0	0.0%	0	0.0%	0	0.0%	0	0.0%	0	0.0%	0	0.0%	0	0.0%	0	0.0%	0	0.0%
	15th	2	0	0.0%	0	0.0%	1	50.0%	0	0.0%	0	0.0%	0	0.0%	0	0.0%	0	0.0%	0	0.0%	1	50.0%	0	0.0%	0	0.0%	0	0.0%	0	0.0%	0	0.0%	0	0.0%	0	0.0%	0	0.0%
	16th	2	1	50.0%	0	0.0%	0	0.0%	0	0.0%	0	0.0%	1	50.0%	0	0.0%	0	0.0%	0	0.0%	0	0.0%	0	0.0%	0	0.0%	0	0.0%	0	0.0%	0	0.0%	0	0.0%	0	0.0%	0	0.0%
<b>Southern Total</b>		<b>87</b>	<b>23</b>	<b>26%</b>	<b>10</b>	<b>11%</b>	<b>2</b>	<b>2.3%</b>	<b>5</b>	<b>5.7%</b>	<b>0</b>	<b>0.0%</b>	<b>2</b>	<b>2.3%</b>	<b>2</b>	<b>2.3%</b>	<b>0</b>	<b>0.0%</b>	<b>3</b>	<b>3%</b>	<b>31</b>	<b>36%</b>	<b>0</b>	<b>0.0%</b>	<b>0</b>	<b>0.0%</b>	<b>0</b>	<b>0.0%</b>	<b>0</b>	<b>0.0%</b>	<b>0</b>	<b>0.0%</b>	<b>1</b>	<b>1.1%</b>	<b>1</b>	<b>1.1%</b>	<b>7</b>	<b>8%</b>
<b>Western Region</b>																																						
	6th	0	0	0.0%	0	0.0%	0	0.0%	0	0.0%	0	0.0%	0	0.0%	0	0.0%	0	0.0%	0	0.0%	0	0.0%	0	0.0%	0	0.0%	0	0.0%	0	0.0%	0	0.0%	0	0.0%	0	0.0%	0	0%
	7th	4	2	50.0%	0	0.0%	0	0.0%	0	0.0%	0	0.0%	0	0.0%	0	0.0%	0	0.0%	1	25.0%	0	0.0%	0	0.0%	0	0.0%	0	0.0%	0	0.0%	0	0.0%	0	0.0%	0	0.0%	1	25.0%
	9th	6	0	0.0%	2	33.3%	3	50.0%	0	0.0%	0	0.0%	0	0.0%	0	0.0%	0	0.0%	0	0.0%	0	0.0%	0	0.0%	0	0.0%	0	0.0%	0	0.0%	0	0.0%	0	0.0%	0	0.0%	1	16.7%
	14th	1	0	0.0%	0	0.0%	0	0.0%	0	0.0%	0	0.0%	0	0.0%	0	0.0%	0	0.0%	0	0.0%	0	0.0%	0	0.0%	0	0.0%	0	0.0%	0	0.0%	0	0.0%	0	0.0%	0	0.0%	1	100%
	21st	16	3	18.8%	0	0.0%	0	0.0%	0	0.0%	0	0.0%	0	0.0%	0	0.0%	0	0.0%	12	75.0%	0	0.0%	0	0.0%	0	0.0%	0	0.0%	0	0.0%	0	0.0%	0	0.0%	1	6.3%		
	22nd	4	1	25.0%	2	50.0%	0	0.0%	0	0.0%	0	0.0%	0	0.0%	0	0.0%	0	0.0%	0	0.0%	0	0.0%	0	0.0%	0	0.0%	0	0.0%	0	0.0%	0	0.0%	0	0.0%	1	25.0%		
<b>Western Total</b>		<b>31</b>	<b>6</b>	<b>19%</b>	<b>4</b>	<b>12.9%</b>	<b>3</b>	<b>9.7%</b>	<b>0</b>	<b>0.0%</b>	<b>0</b>	<b>0.0%</b>	<b>0</b>	<b>0.0%</b>	<b>0</b>	<b>0.0%</b>	<b>0</b>	<b>0.0%</b>	<b>1</b>	<b>3.2%</b>	<b>12</b>	<b>39%</b>	<b>0</b>	<b>0.0%</b>	<b>0</b>	<b>0.0%</b>	<b>0</b>	<b>0.0%</b>	<b>0</b>	<b>0.0%</b>	<b>0</b>	<b>0.0%</b>	<b>0</b>	<b>0.0%</b>	<b>0</b>	<b>0.0%</b>	<b>5</b>	<b>16%</b>
<b>Individual RD Totals</b>		<b>468</b>	<b>122</b>	<b>26%</b>	<b>65</b>	<b>14%</b>	<b>29</b>	<b>6.2%</b>	<b>6</b>	<b>1.3%</b>	<b>0</b>	<b>0.0%</b>	<b>17</b>	<b>3.6%</b>	<b>3</b>	<b>0.6%</b>	<b>0</b>	<b>0.0%</b>	<b>31</b>	<b>7%</b>	<b>125</b>	<b>27%</b>	<b>1</b>	<b>0.2%</b>	<b>0</b>	<b>0.0%</b>	<b>0</b>	<b>0.0%</b>	<b>0</b>	<b>0.0%</b>	<b>0</b>	<b>0.0%</b>	<b>2</b>	<b>0.4%</b>	<b>1</b>	<b>0.2%</b>	<b>66</b>	<b>14%</b>
<b>Statewide Totals</b>		<b>468</b>	<b>187</b>	<b>40.0%</b>	<b>35</b>	<b>7.5%</b>	<b>20</b>	<b>4.3%</b>	<b>156</b>	<b>33.3%</b>	<b>1</b>	<b>0.2%</b>	<b>66</b>	<b>14%</b>																								

# Central Region

## SB94 Reason Detained by Judicial District

### February 2017 New Admits



■ CENTRAL REGION, 232 New Admits

■ 1st JD, 57 New Admits

■ 5th JD, 3 New Admits

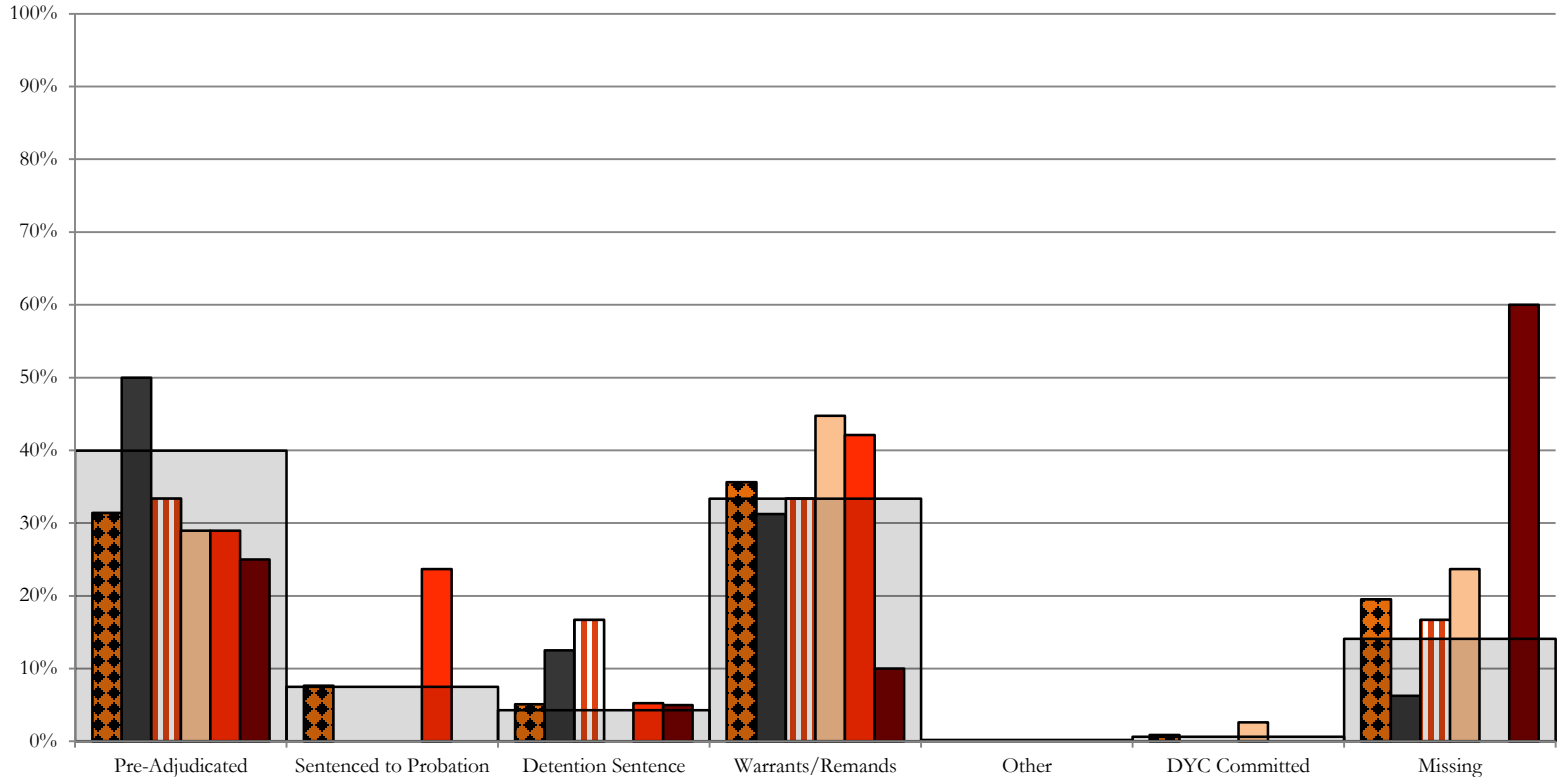
■ 2nd JD, 94 New Admits

■ 18th JD, 78 New Admits

■ STATEWIDE, 468 New Admits

# Northeast Region

## SB94 Reason Detained by Judicial District February 2017 New Admits

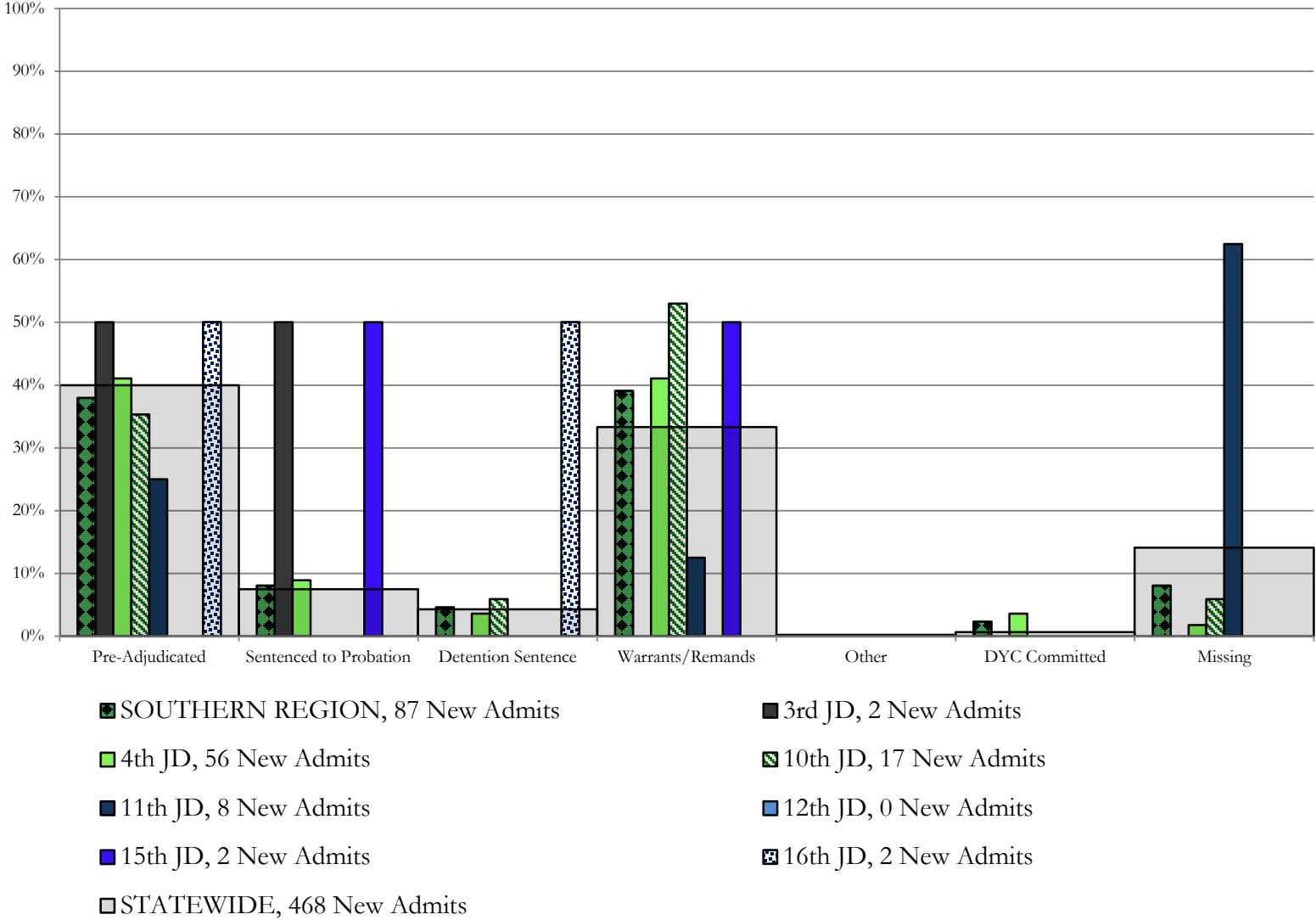


- NORTHEAST REGION, 118 New Admits
- 8th JD, 16 New Admits
- 13th JD, 6 New Admits
- 17th JD, 38 New Admits
- 19th JD, 38 New Admits
- 20th JD, 20 New Admits
- STATEWIDE, 468 New Admits

# Southern Region

## SB94 Reason Detained by Judicial District

### February 2017 New Admits

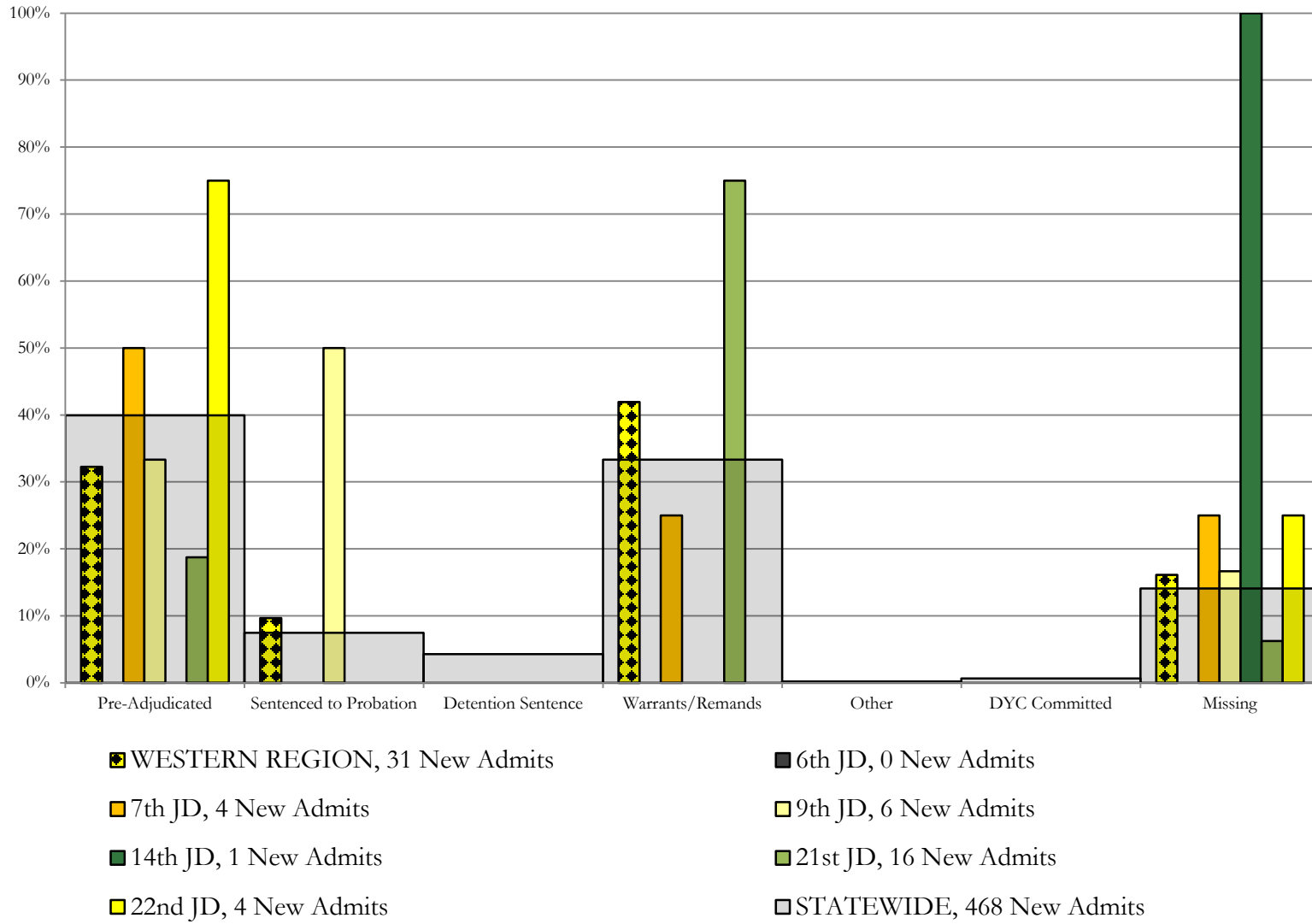




# Western Region

## SB94 Reason Detained by Judicial District

### February 2017 New Admits



# February 2017 SB94 Supplemental Report

## DYC Detention Maximum Youth Served by Judicial District<sup>1</sup>

Region	JD	Detention Capacity	Detention ADP		Maximum Youth Served on a Single Day <sup>2,3</sup>			
			February 2017	YTD	February 2017		YTD	
					Number of Youth	% of Detention Capacity	Number of Youth	% of Detention Capacity
<i>Central Region</i>								
	1st	37	29.0	21.8	35	94.6%	35	94.6%
	2nd	64	46.9	43.9	53	82.8%	59	92.2%
	5th	4	1.5	1.3	3	75.0%	4	100.0%
	18th	61	52.5	40.7	57	93.4%	60	98.4%
<b>Central Region</b>		<b>166</b>	<b>129.8</b>	<b>107.7</b>	<b>136</b>	<b>81.9%</b>	<b>136</b>	<b>81.9%</b>
<i>Northeast Region</i>								
	8th	21	9.3	10.9	13	61.9%	19	90.5%
	13th	5	2.2	1.9	4	80.0%	5	100.0%
	17th	30	23.3	22.5	29	96.7%	30	100.0%
	19th	25	21.1	20.9	28	112.0%	32	128.0%
	20th	13	8.3	7.2	13	100.0%	13	100.0%
<b>Northeast Region</b>		<b>94</b>	<b>64.2</b>	<b>63.3</b>	<b>73</b>	<b>77.7%</b>	<b>76</b>	<b>80.9%</b>
<i>Southern Region</i>								
	3rd	2	0.5	0.6	2	100.0%	3	150.0%
	4th	51	47.8	45.8	51	100.0%	53	103.9%
	10th	13	10.1	11.5	12	92.3%	19	146.2%
	11th	8	2.4	2.7	5	62.5%	6	75.0%
	12th	4	0.2	1.6	1	25.0%	4	100.0%
	15th	2	1.7	2.5	2	100.0%	6	300.0%
	16th	3	1.9	0.8	3	100.0%	4	133.3%
<b>Southern Region</b>		<b>83</b>	<b>64.7</b>	<b>65.4</b>	<b>71</b>	<b>85.5%</b>	<b>77</b>	<b>92.8%</b>
<i>Western Region</i>								
	6th	5	1.1	2.7	2	40.0%	7	140.0%
	7th	7	5.3	4.3	6	85.7%	9	128.6%
	9th	6	3.0	2.3	5	83.3%	5	83.3%
	14th	3	1.0	0.3	2	66.7%	2	66.7%
	21st	14	13.9	10.9	16	114.3%	18	128.6%
	22nd	4	1.5	0.8	3	75.0%	3	75.0%
<b>Western Region</b>		<b>39</b>	<b>25.7</b>	<b>21.3</b>	<b>29</b>	<b>74.4%</b>	<b>31</b>	<b>79.5%</b>
<i>Missing JD or Multiple JDs</i>			0.4	1.0				
<b>Statewide</b>		<b>382</b>	<b>284.8</b>	<b>258.8</b>	<b>299</b>	<b>78.3%</b>	<b>302</b>	<b>79.1%</b>

<sup>1</sup> Maximum youth served is the highest number of youth in detention on a single day during the month or fiscal year.

<sup>2</sup> Regional figures are not the sum of judicial districts, but represent the maximum count on one day for the entire region.

<sup>3</sup> State figures are not the sum of regional figures, but represent the maximum count on one day for the entire state.

## February 2017 SB94 Supplemental Report

### SB94 Community ADP by Judicial District

Region	JD	Committed		Diversion		ICJ		Municipal		Pre-Adjudicated		Sentenced		VCO		Total	
		February	YTD	February	YTD	February	YTD	February	YTD	February	YTD	February	YTD	February	YTD	February	YTD
<i>Central Region</i>																	
	1st	1.3	0.5	0.0	0.0	0.0	0.0	9.0	9.4	303.4	262.3	28.2	19.7	0.0	0.0	341.9	291.8
	2nd	8.4	4.8	0.0	0.0	1.0	0.5	0.0	0.1	174.2	199.4	43.9	36.1	0.0	0.0	227.5	240.9
	5th	0.0	0.0	12.3	7.6	0.0	0.0	0.0	0.0	14.8	13.7	24.3	25.5	0.0	0.0	51.3	46.8
	18th	2.1	1.4	4.0	4.0	0.8	0.2	0.0	0.0	356.5	317.0	54.7	48.7	8.0	8.3	426.1	379.7
<b>Central Total</b>		<b>11.8</b>	<b>6.7</b>	<b>16.3</b>	<b>11.6</b>	<b>1.8</b>	<b>0.7</b>	<b>9.0</b>	<b>9.4</b>	<b>848.8</b>	<b>792.4</b>	<b>151.0</b>	<b>130.0</b>	<b>8.0</b>	<b>8.3</b>	<b>1046.8</b>	<b>959.2</b>
<i>Northeast Region</i>																	
	8th	0.0	0.0	2.0	2.3	0.0	0.0	0.0	0.0	45.4	42.0	45.8	30.4	0.0	0.0	93.2	74.7
	13th	1.0	0.5	0.0	0.0	0.0	0.0	0.0	0.0	7.5	10.2	9.1	10.0	7.0	5.0	24.7	25.8
	17th	0.1	0.7	0.0	0.0	0.0	0.0	1.0	1.0	141.7	141.5	71.5	59.2	0.0	0.0	214.3	202.3
	19th	0.0	0.2	0.5	0.1	0.0	0.0	0.0	0.0	50.7	55.0	34.6	36.0	1.1	1.1	86.9	92.4
	20th	0.0	0.7	10.0	7.7	0.0	0.0	0.0	0.0	58.5	47.5	47.5	51.9	82.6	40.0	198.7	147.8
<b>Northeast Total</b>		<b>1.1</b>	<b>2.2</b>	<b>12.5</b>	<b>10.1</b>	<b>0.0</b>	<b>0.0</b>	<b>1.0</b>	<b>1.0</b>	<b>303.9</b>	<b>296.3</b>	<b>208.6</b>	<b>187.4</b>	<b>90.7</b>	<b>46.0</b>	<b>617.7</b>	<b>543.0</b>
<i>Southern Region</i>																	
	3rd	0.0	0.0	0.0	0.0	0.0	0.0	0.0	0.0	6.8	7.8	5.7	6.4	1.0	1.0	13.6	15.2
	4th	0.2	0.9	0.0	0.0	0.0	0.0	104.4	100.5	213.2	169.7	49.4	48.5	1.9	1.1	369.1	320.7
	10th	0.0	0.0	0.0	0.0	3.0	0.4	29.0	25.2	18.3	17.0	14.8	15.4	6.0	5.0	71.1	63.1
	11th	0.0	0.0	0.0	0.0	0.0	0.0	6.0	1.9	5.6	6.8	19.8	23.2	2.0	0.5	33.4	32.3
	12th	0.0	0.0	0.0	0.0	0.0	0.0	2.2	3.8	9.8	5.5	4.0	2.7	0.0	0.0	16.1	12.0
	15th	0.0	0.0	0.0	0.0	0.0	0.0	0.0	0.0	0.0	1.3	12.5	13.7	0.0	0.0	12.5	15.0
	16th	0.0	0.0	0.0	0.0	0.0	0.0	0.0	0.0	6.2	3.9	4.9	7.5	23.8	20.4	34.9	31.9
<b>Southern Total</b>		<b>0.2</b>	<b>0.9</b>	<b>0.0</b>	<b>0.0</b>	<b>3.0</b>	<b>0.4</b>	<b>141.6</b>	<b>131.4</b>	<b>260.0</b>	<b>212.1</b>	<b>111.2</b>	<b>117.4</b>	<b>34.7</b>	<b>28.1</b>	<b>550.7</b>	<b>490.2</b>
<i>Western Region</i>																	
	6th	0.0	0.0	0.1	0.1	0.0	0.0	0.0	0.0	9.8	13.0	0.0	0.1	0.0	0.0	9.8	13.2
	7th	0.0	0.1	8.9	6.8	0.0	0.0	1.0	0.7	16.6	12.3	25.4	21.9	0.0	0.0	51.9	41.9
	9th	0.0	0.0	0.0	0.0	0.0	0.0	0.0	0.0	8.6	7.3	7.7	8.4	0.0	0.0	16.4	15.8
	14th	0.0	0.0	7.8	10.6	0.0	0.0	0.0	0.0	7.9	3.5	1.8	1.5	0.0	0.0	17.6	15.6
	21st	0.0	0.0	0.0	0.3	0.0	0.0	2.0	2.0	42.7	36.5	22.1	17.0	0.0	0.0	66.7	55.8
	22nd	0.0	0.0	0.0	0.0	0.0	0.0	0.0	0.0	10.2	7.9	4.0	3.7	0.0	0.0	14.2	11.7
<b>Western Total</b>		<b>0.0</b>	<b>0.1</b>	<b>16.8</b>	<b>17.8</b>	<b>0.0</b>	<b>0.0</b>	<b>3.0</b>	<b>2.7</b>	<b>95.9</b>	<b>80.5</b>	<b>61.0</b>	<b>52.8</b>	<b>0.0</b>	<b>0.0</b>	<b>176.6</b>	<b>153.9</b>
<b>Statewide Total</b>		<b>13.0</b>	<b>9.9</b>	<b>45.6</b>	<b>39.5</b>	<b>4.8</b>	<b>1.1</b>	<b>154.6</b>	<b>144.6</b>	<b>1508.7</b>	<b>1381.3</b>	<b>531.8</b>	<b>487.5</b>	<b>133.3</b>	<b>82.4</b>	<b>2391.8</b>	<b>2146.3</b>