

January 2017
FY 2016-2017
SB94 JDSAG SUPPLEMENTAL REPORT

Prepared by the Division of Youth Corrections (DYC)
Research and Evaluation Unit
March 3rd, 2017



COLORADO

**Office of Children,
Youth & Families**

Division of Youth Corrections

January 2017 SB94 Supplemental Report

DYC Commitment ADP & New Commitments by Judicial District

Region	JD ¹	2017 Population Estimates ²	ADP ³		New Commitments		
			January 2017	YTD	January 2017	YTD	YTD Rate ⁴
<i>Central Region</i>							
	1st	56,020	71.0	73.2	2	21	3.7
	2nd	62,634	104.2	116.9	5	22	3.5
	5th	10,162	9.8	9.2	0	2	2.0
	18th	121,363	59.8	64.2	6	20	1.6
Central Total		250,179	244.9	263.6	13	65	2.6
<i>Northeast Region</i>							
	8th	32,983	42.0	43.1	2	23	7.0
	13th	8,520	7.5	6.6	2	4	4.7
	17th	71,425	76.2	74.0	2	20	2.8
	19th	36,924	56.6	52.1	4	26	7.0
	20th	32,693	10.3	9.4	1	5	1.5
Northeast Total		182,545	192.6	185.2	11	78	4.3
<i>Southern Region</i>							
	3rd	1,871	1.0	1.1	0	1	5.3
	4th	81,725	80.4	79.6	2	27	3.3
	10th	17,869	35.3	39.5	3	11	6.2
	11th	7,196	5.0	4.4	0	1	1.4
	12th	5,241	7.9	9.3	0	3	5.7
	15th	2,102	2.0	0.9	0	2	9.5
	16th	2,749	-	-	0	0	0.0
Southern Total		118,753	131.7	134.8	5	45	3.8
<i>Western Region</i>							
	6th	6,491	7.4	7.1	0	4	6.2
	7th	10,788	7.0	8.3	0	3	2.8
	9th	9,477	6.0	4.4	0	3	3.2
	14th	5,635	2.0	2.8	0	0	0.0
	21st	15,968	36.1	36.5	2	14	8.8
	22nd	3,108	3.9	2.9	1	1	3.2
Western Total		51,467	62.3	62.1	3	25	4.9
Statewide Total		602,944	631.6	645.7	32	213	3.5

¹ JD represents the judicial district in which the client was committed. Regional totals are a sum of their respective judicial districts. Regional totals reported here may differ slightly from those reported in the Monthly Population Report, where region is defined by active caseloads.

² Source: DOLA 2017 Estimates.

³ Due to rounding, totals shown may not be an exact sum of the subtotals.

⁴ Per 10,000 youth in the population.

January 2017 SB94 Supplemental Report

DYC Detention ADP and New Detention Admissions by Judicial District

Region	JD	2017 Population Estimates ¹	ADP		New Admits		YTD New Admit Rate ²
			January 2017	YTD	January 2017	YTD	
<i>Central Region</i>							
	1st	56,020	25.1	21.1	68	412	73.5
	2nd	62,634	39.6	43.5	66	539	86.1
	5th	10,162	1.4	1.3	2	18	17.7
	18th	121,363	52.4	39.2	112	590	48.6
Central Total		250,179	118.5	105.0	248	1,559	62.3
<i>Northeast Region</i>							
	8th	32,983	10.0	11.1	19	178	54.0
	13th	8,520	0.6	1.8	3	32	37.6
	17th	71,425	24.2	22.4	41	296	41.4
	19th	36,924	17.9	20.9	49	330	89.4
	20th	32,693	7.6	7.0	9	116	35.5
Northeast Total		182,545	60.3	63.2	121	952	52.2
<i>Southern Region</i>							
	3rd	1,871	1.1	0.6	4	10	53.4
	4th	81,725	44.7	45.5	69	492	60.2
	10th	17,869	12.8	11.7	29	174	97.4
	11th	7,196	3.6	2.7	10	68	94.5
	12th	5,241	0.8	1.8	5	24	45.8
	15th	2,102	2.0	2.5	4	19	90.4
	16th	2,749	2.3	0.6	2	11	40.0
Southern Total		118,753	67.4	65.5	123	798	67.2
<i>Western Region</i>							
	6th	6,491	2.3	2.9	2	34	52.4
	7th	10,788	3.5	4.1	10	43	39.9
	9th	9,477	1.7	2.2	3	25	26.4
	14th	5,635	0.1	0.2	1	6	10.6
	21st	15,968	14.4	10.5	24	143	89.6
	22nd	3,108	0.2	0.8	0	11	35.4
Western Total		51,467	22.3	20.8	40	262	50.9
<i>Missing JD or Multiple JDs</i>			<i>0.5</i>	<i>1.1</i>			
Statewide Total		602,944	269.0	255.6	532	3,571	59.2

¹ Source: DOLA 2017 Estimates.

² Per 10,000 youth in the population.

January 2017 SB94 Supplemental Report

DYC Detention LOS by Judicial District

Region	JD	YTD Detention Releases	YTD LOS (days)	LOS (days) Compared to State AVG
<i>Central Region</i>				
	1st	400	11.2	-3.9
	2nd	546	17.1	2.0
	5th	17	14.7	-0.4
	18th	565	12.8	-2.3
Central Total		1,528	13.9	-1.2
<i>Northeast Region</i>				
	8th	180	14.1	-1.0
	13th	34	11.8	-3.3
	17th	287	14.1	-0.9
	19th	322	13.4	-1.6
	20th	112	10.6	-4.5
Northeast Total		935	13.4	-1.7
<i>Southern Region</i>				
	3rd	9	13.4	-1.7
	4th	484	18.6	3.5
	10th	172	13.8	-1.3
	11th	65	7.3	-7.8
	12th	25	16.4	1.3
	15th	21	27.9	12.8
	16th	9	4.6	-10.5
Southern Total		785	16.5	1.5
<i>Western Region</i>				
	6th	35	18.3	3.3
	7th	37	18.4	3.3
	9th	24	17.7	2.6
	14th	5	8.2	-6.8
	21st	134	13.9	-1.1
	22nd	12	13.0	-2.1
Western Total		247	15.4	0.3
Statewide Total		3,508	15.1	-

January 2017 SB94 JDSAG Supplemental Report

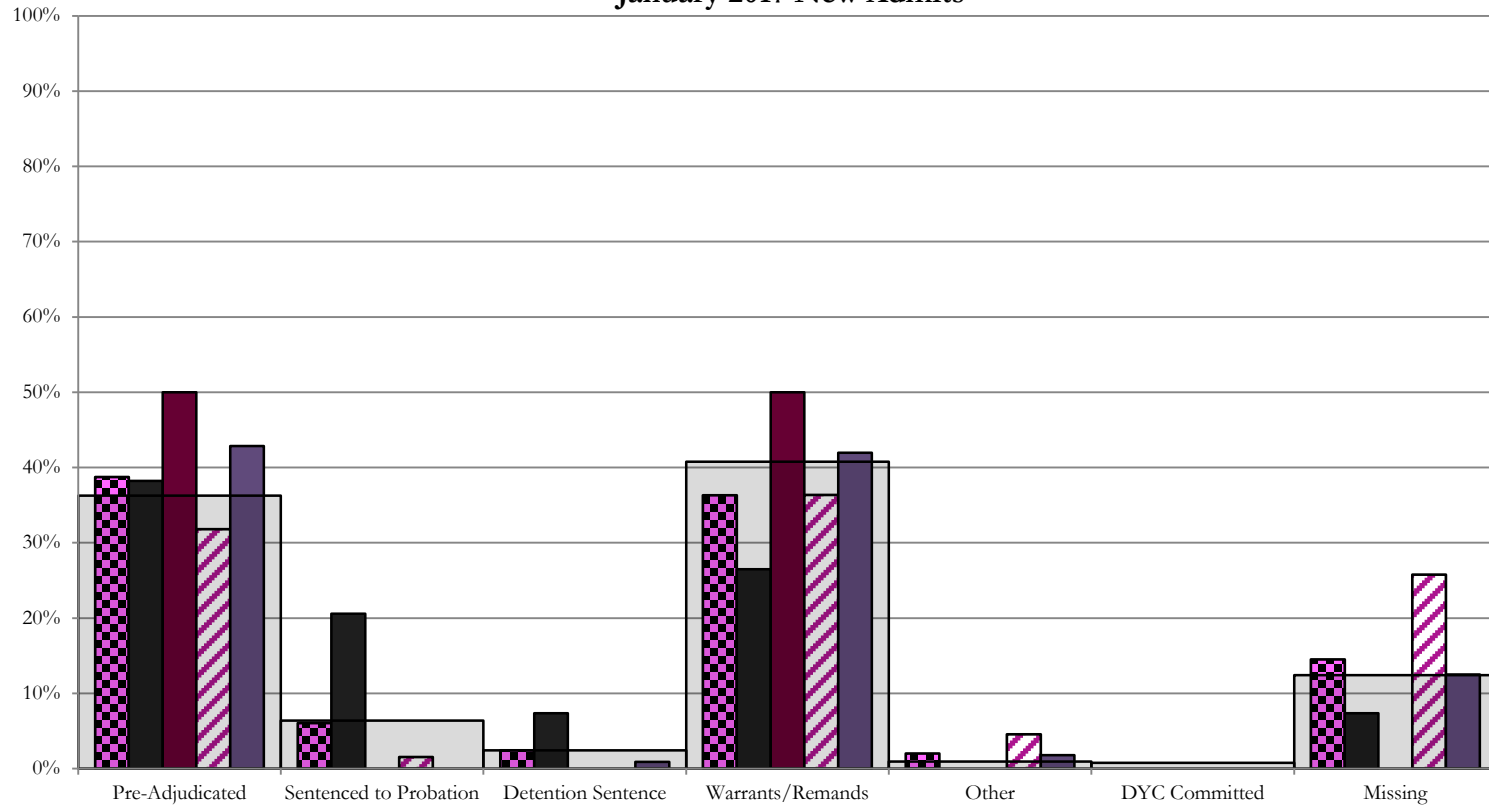
SB94 Reason Detained (RD) by Judicial District

Region	JD	Monthly New Admits	Pre-Adjudicated				Sentenced to Probation				Detention Sentence								Warrants/Remands				Other						DYC Committed		Missing					
			Felony		Misdemeanor		Technical Violator		New Charges		Probation Sentence		Detention Sentence		Valid Court Order (VCO) Truancy		Awaiting DSS (Social Services) Placement		Failure to Appear (FTA)		Failure to Comply (FTC)		Interstate Compact on Juveniles (ICJ) Hold		Immigration Hold		No Bond Hold		Out-of-Country Warrant		Institutional		Parole		Missing	
			#	%	#	%	#	%	#	%	#	%	#	%	#	%	#	%	#	%	#	%	#	%	#	%	#	%	#	%	#	%	#	%	#	%
Central Region																																				
	1st	68	19	27.9%	7	10.3%	12	17.6%	2	2.9%	0	0.0%	5	7.4%	0	0.0%	0	0.0%	6	8.8%	12	17.6%	0	0.0%	0	0.0%	0	0.0%	0	0.0%	0	0.0%	0	0.0%	5	7.4%
	2nd	66	21	31.8%	0	0.0%	1	1.5%	0	0.0%	0	0.0%	0	0.0%	0	0.0%	0	0.0%	7	10.6%	17	25.8%	3	4.5%	0	0.0%	0	0.0%	0	0.0%	0	0.0%	0	0.0%	17	25.8%
	5th	2	0	0.0%	1	50.0%	0	0.0%	0	0.0%	0	0.0%	0	0.0%	0	0.0%	0	0.0%	1	50.0%	0	0.0%	0	0.0%	0	0.0%	0	0.0%	0	0.0%	0	0.0%	0	0.0%	0	0.0%
	18th	112	28	25.0%	20	17.9%	0	0.0%	0	0.0%	0	0.0%	1	0.9%	0	0.0%	0	0.0%	12	10.7%	35	31.3%	2	1.8%	0	0.0%	0	0.0%	0	0.0%	0	0.0%	0	0.0%	14	12.5%
Central Total		248	68	27%	28	11%	13	5.2%	2	0.8%	0	0.0%	6	2.4%	0	0.0%	0	0.0%	26	10%	64	26%	5	2.0%	0	0.0%	0	0.0%	0	0.0%	0	0.0%	0	0.0%	36	14.5%
Northeast Region																																				
	8th	19	3	15.8%	2	10.5%	0	0.0%	0	0.0%	0	0.0%	1	5.3%	0	0.0%	0	0.0%	1	5.3%	11	57.9%	0	0.0%	0	0.0%	0	0.0%	0	0.0%	0	0.0%	0	0.0%	1	5.3%
	13th	3	2	66.7%	0	0.0%	0	0.0%	0	0.0%	0	0.0%	0	0.0%	0	0.0%	0	0.0%	0	0.0%	1	33.3%	0	0.0%	0	0.0%	0	0.0%	0	0.0%	0	0.0%	0	0.0%	0	0.0%
	17th	41	6	14.6%	3	7.3%	0	0.0%	0	0.0%	0	0.0%	0	0.0%	0	0.0%	0	0.0%	5	12.2%	20	48.8%	0	0.0%	0	0.0%	0	0.0%	0	0.0%	0	0.0%	0	0.0%	7	17.1%
	19th	49	9	18.4%	12	24.5%	10	20.4%	0	0.0%	0	0.0%	1	2.0%	0	0.0%	0	0.0%	1	2.0%	15	30.6%	0	0.0%	0	0.0%	0	0.0%	0	0.0%	0	0.0%	0	0.0%	1	2.0%
	20th	9	0	0.0%	1	11.1%	0	0.0%	0	0.0%	0	0.0%	4	44.4%	0	0.0%	0	0.0%	0	0.0%	0	0.0%	0	0.0%	0	0.0%	0	0.0%	0	0.0%	0	0.0%	0	0.0%	4	44.4%
Northeast Total		121	20	17%	18	15%	10	8.3%	0	0.0%	0	0.0%	6	5.0%	0	0.0%	0	0.0%	7	5.8%	47	39%	0	0.0%	0	0.0%	0	0.0%	0	0.0%	0	0.0%	0	0.0%	13	11%
Southern Region																																				
	3rd	4	2	50.0%	0	0%	1	25.0%	0	0.0%	0	0.0%	0	0.0%	0	0.0%	0	0.0%	0	0.0%	0	0.0%	0	0.0%	0	0.0%	0	0.0%	0	0.0%	0	0.0%	1	25.0%		
	4th	69	20	29.0%	9	13.0%	0	0.0%	5	7.2%	0	0.0%	0	0.0%	0	0.0%	0	0.0%	4	5.8%	26	37.7%	0	0.0%	0	0.0%	0	0.0%	2	2.9%	0	0.0%	3	4.3%		
	10th	29	6	20.7%	0	0.0%	0	0.0%	0	0.0%	0	0.0%	0	0.0%	0	0.0%	0	0.0%	12	41.4%	9	31.0%	0	0.0%	0	0.0%	0	0.0%	1	3.4%	0	0.0%	1	3.4%		
	11th	10	0	0.0%	2	20.0%	0	0.0%	0	0.0%	0	0.0%	0	0.0%	0	0.0%	0	0.0%	3	30.0%	0	0.0%	0	0.0%	0	0.0%	0	0.0%	1	10.0%	0	0.0%	4	40.0%		
	12th	5	1	20.0%	2	40.0%	0	0.0%	1	20.0%	0	0.0%	0	0.0%	0	0.0%	0	0.0%	1	20.0%	1	20.0%	0	0.0%	0	0.0%	0	0.0%	0	0.0%	0	0.0%	0	0.0%		
	15th	4	0	0.0%	0	0.0%	1	25.0%	0	0.0%	0	0.0%	0	0.0%	0	0.0%	0	0.0%	1	25.0%	1	25.0%	0	0.0%	0	0.0%	0	0.0%	0	0.0%	0	0.0%	1	25.0%		
	16th	2	0	0.0%	1	50.0%	0	0.0%	0	0.0%	0	0.0%	0	0.0%	0	0.0%	0	0.0%	1	50.0%	0	0.0%	0	0.0%	0	0.0%	0	0.0%	0	0.0%	0	0.0%	0	0.0%		
Southern Total		123	29	24%	14	11%	2	1.6%	6	4.9%	0	0.0%	0	0.0%	0	0.0%	0	0.0%	18	15%	40	33%	0	0.0%	0	0.0%	0	0.0%	0	0.0%	4	3.3%	0	0.0%	10	8%
Western Region																																				
	6th	2	0	0.0%	0	0.0%	0	0.0%	0	0.0%	0	0.0%	0	0.0%	0	0.0%	0	0.0%	0	0.0%	0	0.0%	0	0.0%	0	0.0%	0	0.0%	0	0.0%	0	0.0%	2	100%		
	7th	10	3	30.0%	2	20.0%	0	0.0%	0	0.0%	0	0.0%	0	0.0%	0	0.0%	0	0.0%	2	20.0%	0	0.0%	0	0.0%	0	0.0%	0	0.0%	0	0.0%	0	0.0%	3	30.0%		
	9th	3	2	66.7%	0	0.0%	1	33.3%	0	0.0%	0	0.0%	0	0.0%	0	0.0%	0	0.0%	0	0.0%	0	0.0%	0	0.0%	0	0.0%	0	0.0%	0	0.0%	0	0.0%	0	0.0%		
	14th	1	0	0.0%	0	0.0%	0	0.0%	0	0.0%	0	0.0%	0	0.0%	0	0.0%	0	0.0%	0	0.0%	0	0.0%	0	0.0%	0	0.0%	0	0.0%	0	0.0%	0	0.0%	1	100%		
	21st	24	8	33.3%	1	4.2%	0	0.0%	0	0.0%	0	0.0%	1	4.2%	0	0.0%	0	0.0%	0	0.0%	13	54.2%	0	0.0%	0	0.0%	0	0.0%	0	0.0%	0	0.0%	1	4.2%		
	22nd	0	0	0.0%	0	0.0%	0	0.0%	0	0.0%	0	0.0%	0	0.0%	0	0.0%	0	0.0%	0	0.0%	0	0.0%	0	0.0%	0	0.0%	0	0.0%	0	0.0%	0	0.0%	0	0.0%		
Western Total		40	13	33%	3	7.5%	1	2.5%	0	0.0%	0	0.0%	1	2.5%	0	0.0%	0	0.0%	0	0.0%	15	38%	0	0.0%	0	0.0%	0	0.0%	0	0.0%	0	0.0%	7	18%		
Individual RD Totals		532	130	24%	63	12%	26	4.9%	8	1.5%	0	0.0%	13	2.4%	0	0.0%	0	0.0%	51	10%	166	31%	5	0.9%	0	0.0%	0	0.0%	0	0.0%	4	0.8%	0	0.0%	66	12%
Statewide Totals		532	193	36.3%	34	6.4%	13	2.4%	0	0.0%	0	0.0%	13	2.4%	0	0.0%	0	0.0%	217	40.8%	5	0.9%	0	0.0%	0	0.0%	4	0.8%	0	0.0%	66	12%				

Central Region

SB94 Reason Detained by Judicial District

January 2017 New Admits



■ CENTRAL REGION, 248 New Admits

■ 5th JD, 2 New Admits

■ 18th JD, 112 New Admits

■ 1st JD, 68 New Admits

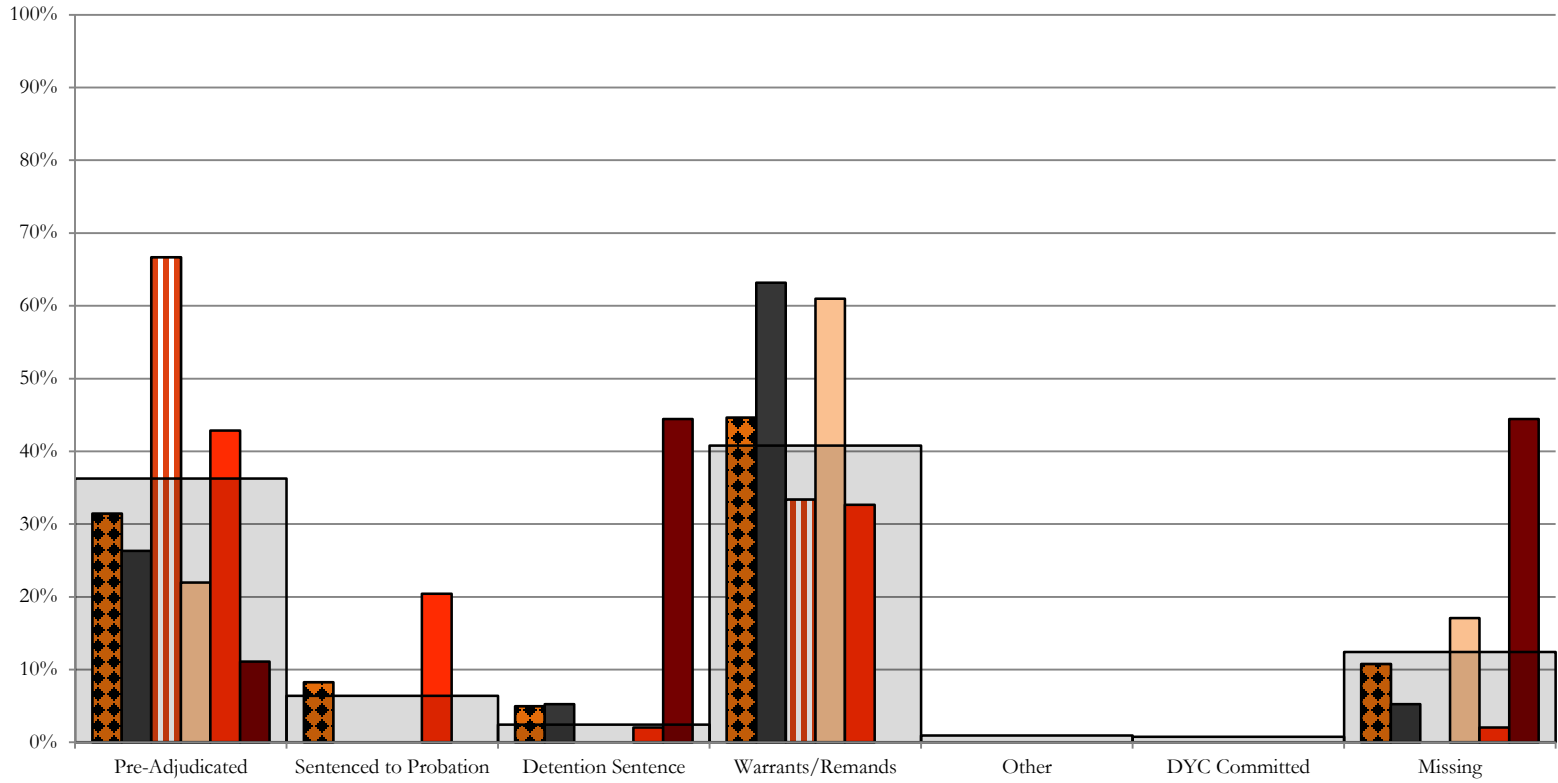
■ 2nd JD, 66 New Admits

■ STATEWIDE, 532 New Admits

Northeast Region

SB94 Reason Detained by Judicial District

January 2017 New Admits



■ NORTHEAST REGION, 121 New Admits

■ 8th JD, 19 New Admits

■ 13th JD, 3 New Admits

■ 17th JD, 41 New Admits

■ 19th JD, 49 New Admits

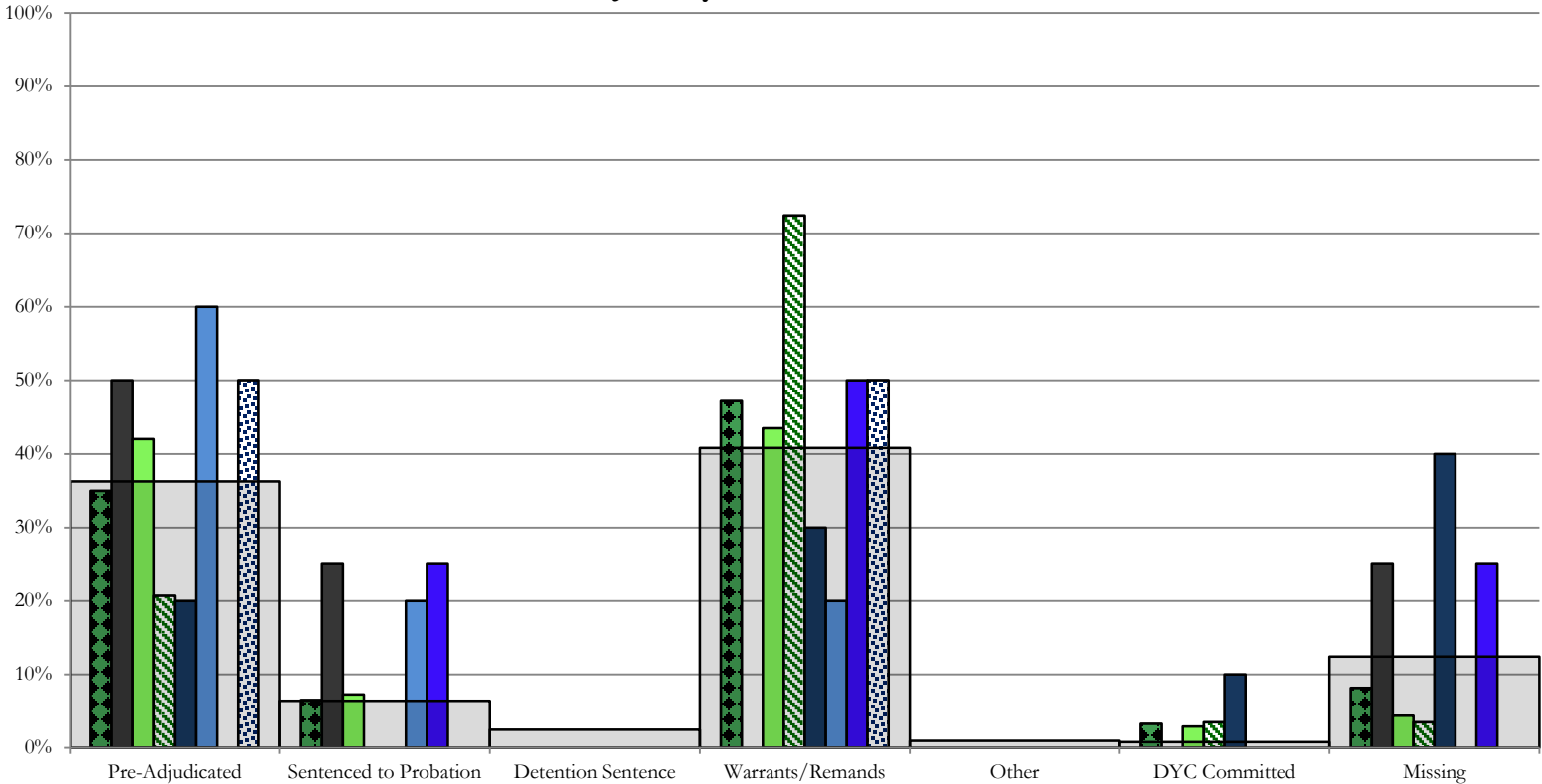
■ 20th JD, 9 New Admits

■ STATEWIDE, 532 New Admits

Southern Region

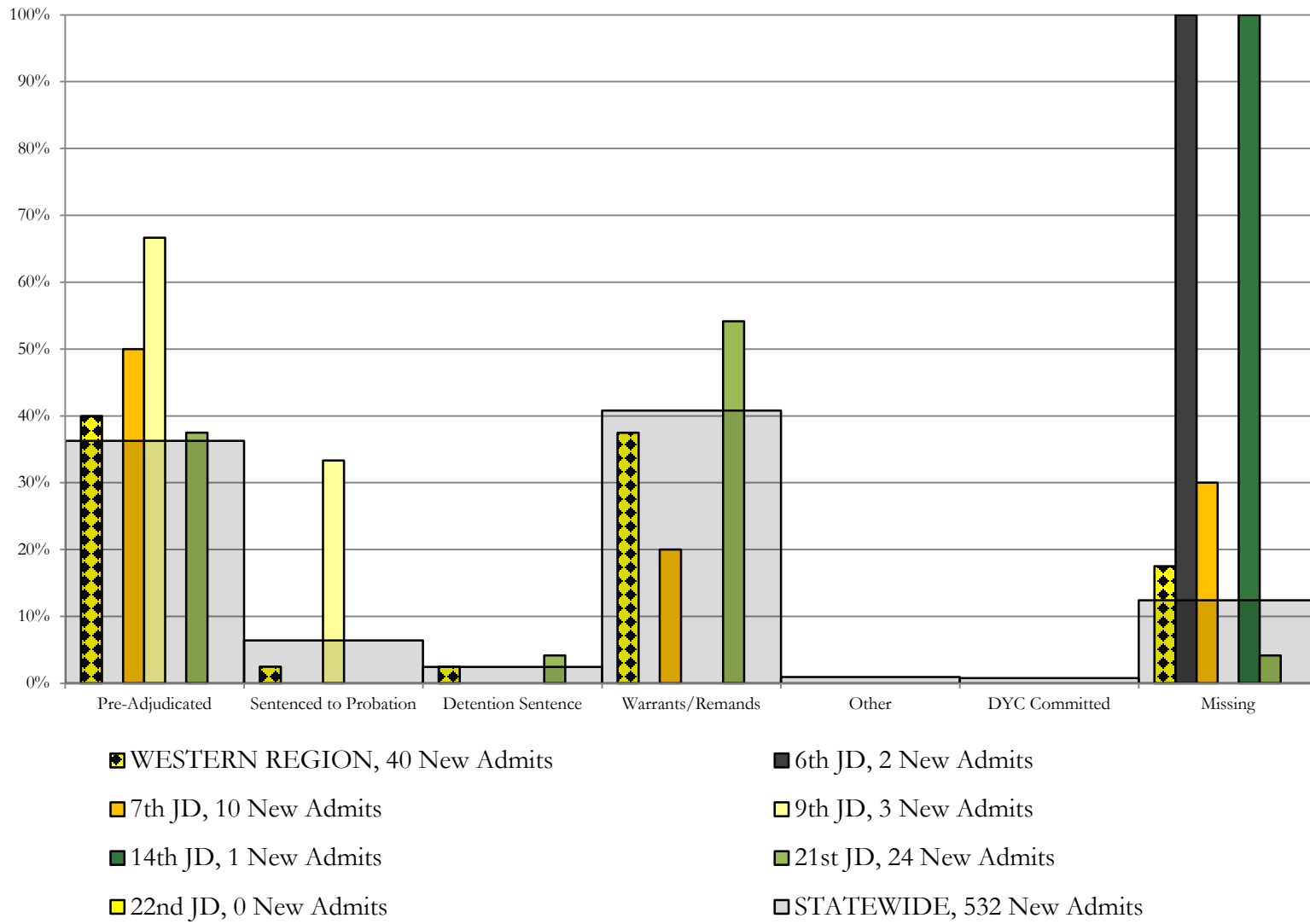
SB94 Reason Detained by Judicial District

January 2017 New Admits



- SOUTHERN REGION, 123 New Admits
- 4th JD, 69 New Admits
- 11th JD, 10 New Admits
- 15th JD, 4 New Admits
- STATEWIDE, 532 New Admits
- 3rd JD, 4 New Admits
- 10th JD, 29 New Admits
- 12th JD, 5 New Admits
- 16th JD, 2 New Admits

Western Region SB94 Reason Detained by Judicial District January 2017 New Admits



January 2017 SB94 Supplemental Report

DYC Detention Maximum Youth Served by Judicial District¹

Region	JD	Detention Capacity	Detention ADP		Maximum Youth Served on a Single Day ^{2,3}			
			January 2017	YTD	January 2017		YTD	
					Number of Youth	% of Detention Capacity	Number of Youth	% of Detention Capacity
<i>Central Region</i>								
	1st	37	25.1	21.1	30	81.1%	32	86.5%
	2nd	64	39.6	43.5	49	76.6%	59	92.2%
	5th	4	1.4	1.3	3	75.0%	4	100.0%
	18th	61	52.4	39.2	59	96.7%	59	96.7%
Central Region		166	118.5	105.0	136	81.9%	136	81.9%
<i>Northeast Region</i>								
	8th	21	10.0	11.1	14	66.7%	19	90.5%
	13th	5	0.6	1.8	2	40.0%	5	100.0%
	17th	30	24.2	22.4	29	96.7%	30	100.0%
	19th	25	17.9	20.9	25	100.0%	32	128.0%
	20th	13	7.6	7.0	10	76.9%	12	92.3%
Northeast Region		94	60.3	63.2	70	74.5%	76	80.9%
<i>Southern Region</i>								
	3rd	2	1.1	0.6	3	150.0%	3	150.0%
	4th	51	44.7	45.5	52	102.0%	53	103.9%
	10th	13	12.8	11.7	19	146.2%	19	146.2%
	11th	8	3.6	2.7	5	62.5%	6	75.0%
	12th	4	0.8	1.8	2	50.0%	4	100.0%
	15th	2	2.0	2.5	3	150.0%	6	300.0%
	16th	3	2.3	0.6	4	133.3%	4	133.3%
Southern Region		83	67.4	65.5	75	90.4%	77	92.8%
<i>Western Region</i>								
	6th	5	2.3	2.9	3	60.0%	7	140.0%
	7th	7	3.5	4.1	6	85.7%	9	128.6%
	9th	6	1.7	2.2	3	50.0%	5	83.3%
	14th	3	0.1	0.2	1	33.3%	2	66.7%
	21st	14	14.4	10.5	18	128.6%	18	128.6%
	22nd	4	0.2	0.8	2	50.0%	3	75.0%
Western Region		39	22.3	20.8	28	71.8%	31	79.5%
<i>Missing JD or Multiple JDs</i>			0.5	1.1				
Statewide		382	269.0	255.6	302	79.1%	302	79.1%

¹ Maximum youth served is the highest number of youth in detention on a single day during the month or fiscal year.

² Regional figures are not the sum of judicial districts, but represent the maximum count on one day for the entire region.

³ State figures are not the sum of regional figures, but represent the maximum count on one day for the entire state.

January 2017 SB94 Supplemental Report

SB94 Community ADP by Judicial District

Region	JD	Committed		Diversion		ICJ		Municipal		Pre-Adjudicated		Sentenced		VCO		Total	
		January	YTD	January	YTD	January	YTD	January	YTD	January	YTD	January	YTD	January	YTD	January	YTD
<i>Central Region</i>																	
	1st	0.3	0.4	0.0	0.0	0.0	0.0	9.8	9.4	285.9	256.9	31.1	18.9	0.0	0.0	327.1	285.6
	2nd	6.7	4.3	0.0	0.0	1.2	0.4	0.0	0.1	175.7	205.5	35.4	34.9	0.0	0.0	219.1	245.1
	5th	0.0	0.0	8.0	7.0	0.0	0.0	0.0	0.0	14.4	13.5	23.6	25.5	0.0	0.0	46.0	46.0
	18th	1.9	1.3	4.0	4.0	0.6	0.1	0.0	0.0	347.5	317.1	51.7	48.0	8.0	8.4	413.6	378.9
Central Total		8.8	6.0	12.0	11.0	1.8	0.5	9.8	9.5	823.5	793.0	141.8	127.2	8.0	8.4	1005.8	955.7
<i>Northeast Region</i>																	
	8th	0.0	0.0	2.0	2.4	0.0	0.0	0.0	0.0	34.7	41.1	30.4	29.1	0.0	0.0	67.0	72.6
	13th	1.0	0.5	0.0	0.0	0.0	0.0	0.0	0.0	9.3	10.9	10.6	10.1	7.6	4.7	28.5	26.3
	17th	4.0	3.8	0.0	0.0	0.0	0.0	1.0	1.0	216.3	197.2	73.9	58.8	0.0	0.0	295.2	260.8
	19th	0.3	0.3	0.0	0.0	0.0	0.0	0.0	0.0	52.3	53.2	34.4	37.6	2.0	1.8	89.0	92.9
	20th	0.0	0.8	23.3	11.7	0.0	0.0	0.0	0.0	78.0	53.5	61.6	57.4	6.8	5.5	169.7	129.1
Northeast Total		5.3	5.4	25.3	14.1	0.0	0.0	1.0	1.0	390.6	355.9	210.8	193.1	16.4	12.1	649.4	581.6
<i>Southern Region</i>																	
	3rd	0.0	0.0	0.0	0.0	0.0	0.0	0.0	0.0	12.1	12.0	7.7	7.0	1.0	1.0	20.8	20.1
	4th	0.5	0.9	0.0	0.0	0.0	0.0	103.4	99.2	211.9	167.9	39.6	46.7	1.0	1.0	356.3	315.8
	10th	0.0	0.0	0.0	0.0	0.5	0.1	27.1	23.7	16.8	17.1	17.5	16.9	7.0	4.9	68.8	62.7
	11th	0.0	0.0	0.0	0.0	0.0	0.0	3.4	1.1	15.0	16.0	31.0	33.0	2.4	1.3	51.7	51.4
	12th	0.0	0.0	0.0	0.0	0.0	0.0	6.0	4.0	5.9	5.0	5.0	2.6	0.0	0.0	16.9	11.6
	15th	0.0	0.0	0.0	0.0	0.0	0.0	0.0	0.0	0.3	1.4	17.9	13.9	0.0	0.0	18.2	15.3
	16th	0.0	0.0	0.0	0.0	0.0	0.0	0.0	0.0	6.3	4.3	16.0	16.2	25.0	22.0	47.3	42.4
Southern Total		0.5	1.0	0.0	0.0	0.5	0.1	139.8	128.0	268.2	223.7	134.7	136.4	36.3	30.2	580.0	519.3
<i>Western Region</i>																	
	6th	0.0	0.0	0.4	0.1	0.0	0.0	0.0	0.0	13.2	14.1	0.0	0.1	0.0	0.0	13.6	14.3
	7th	0.0	0.2	11.7	9.0	0.0	0.0	1.0	0.7	12.3	12.3	26.2	21.2	0.0	0.0	51.2	43.3
	9th	0.0	0.0	0.0	0.0	0.0	0.0	0.0	0.0	7.9	7.2	4.7	8.4	0.0	0.0	12.6	15.6
	14th	0.0	0.0	9.0	11.7	0.0	0.0	0.0	0.0	4.4	2.3	2.0	1.5	0.0	0.0	15.4	15.5
	21st	0.0	0.0	0.0	0.3	0.0	0.0	2.0	2.0	43.7	35.6	21.7	13.5	0.0	0.0	67.4	51.4
	22nd	0.0	0.0	0.0	0.0	0.0	0.0	0.0	0.0	7.0	7.6	4.0	3.7	0.0	0.0	11.0	11.3
Western Total		0.0	0.2	21.1	21.0	0.0	0.0	3.0	2.7	88.5	79.0	58.7	48.5	0.0	0.0	171.3	151.3
Statewide Total		14.6	12.5	58.4	46.2	2.3	0.6	153.6	141.3	1570.9	1451.5	545.9	505.2	60.7	50.6	2406.5	2207.9