

December 2016
FY 2016-2017
SB94 JDSAG SUPPLEMENTAL REPORT

Prepared by the Division of Youth Corrections (DYC)
Research and Evaluation Unit
February 1st, 2017



COLORADO

**Office of Children,
Youth & Families**

Division of Youth Corrections

December 2016 SB94 Supplemental Report

DYC Commitment ADP & New Commitments by Judicial District

Region	JD ¹	2017 Population Estimates ²	ADP ³		New Commitments		
			December 2016	YTD	December 2016	YTD	YTD Rate ⁴
<i>Central Region</i>							
	1st	56,020	72.4	73.6	2	18	3.2
	2nd	62,634	109.4	118.1	0	17	2.7
	5th	10,162	10.0	9.1	0	2	2.0
	18th	121,363	58.3	64.7	1	14	1.2
Central Total		250,179	250.2	265.5	3	51	2.0
<i>Northeast Region</i>							
	8th	32,983	42.4	43.2	3	21	6.4
	13th	8,520	5.8	6.2	1	2	2.3
	17th	71,425	77.5	74.2	5	19	2.7
	19th	36,924	57.0	51.4	2	22	6.0
	20th	32,693	9.5	9.2	0	4	1.2
Northeast Total		182,545	192.2	184.2	11	68	3.7
<i>Southern Region</i>							
	3rd	1,871	1.0	1.1	0	1	5.3
	4th	81,725	79.6	79.4	9	25	3.1
	10th	17,869	34.9	40.3	1	8	4.5
	11th	7,196	5.0	4.3	0	1	1.4
	12th	5,241	8.0	8.7	0	2	3.8
	15th	2,102	2.0	0.7	0	2	9.5
	16th	2,749	-	-	0	0	0.0
Southern Total		118,753	130.5	134.4	10	39	3.3
<i>Western Region</i>							
	6th	6,491	7.4	6.7	1	4	6.2
	7th	10,788	7.5	8.5	0	3	2.8
	9th	9,477	6.0	4.2	0	3	3.2
	14th	5,635	2.0	2.9	0	0	0.0
	21st	15,968	35.3	36.3	2	12	7.5
	22nd	3,108	3.0	2.7	0	0	0.0
Western Total		51,467	61.2	61.3	3	22	4.3
Statewide Total		602,944	634.0	645.4	27	180	3.0

¹ JD represents the judicial district in which the client was committed. Regional totals are a sum of their respective judicial districts. Regional totals reported here may differ slightly from those reported in the Monthly Population Report, where region is defined by active caseloads.

² Source: DOLA 2017 Estimates.

³ Due to rounding, totals shown may not be an exact sum of the subtotals.

⁴ Per 10,000 youth in the population.

December 2016 SB94 Supplemental Report

DYC Detention ADP and New Detention Admissions by Judicial District

Region	JD	2017 Population Estimates ¹	ADP		New Admits		
			December 2016	YTD	December 2016	YTD	YTD New Admit Rate ²
<i>Central Region</i>							
	1st	56,020	18.1	20.4	56	344	61.4
	2nd	62,634	42.5	45.2	74	473	75.5
	5th	10,162	0.4	1.2	3	16	15.7
	18th	121,363	45.5	37.2	73	479	39.5
Central Total		250,179	106.6	104.0	206	1,312	52.4
<i>Northeast Region</i>							
	8th	32,983	12.3	11.2	28	159	48.2
	13th	8,520	1.3	2.1	1	29	34.0
	17th	71,425	24.5	22.1	39	254	35.6
	19th	36,924	18.1	21.8	35	281	76.1
	20th	32,693	7.1	6.9	13	107	32.7
Northeast Total		182,545	63.3	64.2	116	830	45.5
<i>Southern Region</i>							
	3rd	1,871	0.0	0.5	0	6	32.1
	4th	81,725	44.4	45.7	70	423	51.8
	10th	17,869	13.7	11.5	32	145	81.1
	11th	7,196	3.7	2.5	9	58	80.6
	12th	5,241	1.4	1.9	3	19	36.3
	15th	2,102	1.7	2.6	3	15	71.4
	16th	2,749	0.9	0.4	2	8	29.1
Southern Total		118,753	65.9	65.2	119	674	56.8
<i>Western Region</i>							
	6th	6,491	2.8	2.8	4	31	47.8
	7th	10,788	3.1	4.2	1	33	30.6
	9th	9,477	1.2	2.3	4	22	23.2
	14th	5,635	0.6	0.2	1	5	8.9
	21st	15,968	12.8	9.9	21	119	74.5
	22nd	3,108	1.1	0.8	3	11	35.4
Western Total		51,467	21.6	20.2	34	221	42.9
<i>Missing JD or Multiple JDs</i>			<i>0.4</i>	<i>1.2</i>			
Statewide Total		602,944	257.9	254.8	475	3,037	50.4

¹ Source: DOLA 2017 Estimates.

² Per 10,000 youth in the population.

December 2016 SB94 Supplemental Report

DYC Detention LOS by Judicial District

Region	JD	YTD Detention Releases	YTD LOS (days)	LOS (days) Compared to State AVG
<i>Central Region</i>				
	1st	339	11.2	-3.6
	2nd	491	16.7	1.9
	5th	14	14.8	0.0
	18th	466	11.5	-3.3
Central Total		1,310	13.4	-1.4
<i>Northeast Region</i>				
	8th	158	13.2	-1.6
	13th	33	12.2	-2.6
	17th	247	13.1	-1.7
	19th	281	13.6	-1.1
	20th	100	10.1	-4.7
Northeast Total		819	12.9	-1.9
<i>Southern Region</i>				
	3rd	7	16.2	1.5
	4th	423	19.3	4.6
	10th	139	13.9	-0.8
	11th	56	7.2	-7.6
	12th	21	18.4	3.6
	15th	17	27.5	12.7
	16th	7	4.7	-10.0
Southern Total		670	17.2	2.4
<i>Western Region</i>				
	6th	32	15.0	0.2
	7th	30	15.8	1.0
	9th	20	17.1	2.3
	14th	5	8.2	-6.5
	21st	113	14.1	-0.7
	22nd	10	4.8	-9.9
Western Total		210	14.2	-0.6
Statewide Total		3,018	14.8	-

December 2016 SB 94 Supplemental Report

YTD DYC Detention ADP & Ethnicity by Judicial District

Region	JD	Anglo-American		African-American		Hispanic / Latino		Native-American		Asian-American		Other		TOTAL	
		ADP	%	ADP	%	ADP	%	ADP	%	ADP	%	ADP	%	ADP	%
Central															
	1st	11.8	58.0%	1.6	7.9%	6.3	31.1%	0.3	1.4%	0.0	0.0%	0.3	1.5%	20.4	100%
	2nd	6.3	13.9%	17.1	37.8%	21.4	47.3%	0.1	0.1%	0.04	0.1%	0.3	0.7%	45.2	100%
	5th	0.6	45.0%	0.0	0.0%	0.6	46.6%	0.0	0.0%	0.0	0.0%	0.1	8.4%	1.2	100%
	18th	13.8	37.2%	13.5	36.2%	7.6	20.5%	1.0	2.7%	0.5	1.3%	0.8	2.2%	37.2	100%
Central Total		32.5	38.5%	32.2	20.5%	35.9	36.4%	1.4	1.1%	0.5	0.4%	1.5	3.2%	104.0	100%
Northeast															
	8th	5.7	51.0%	1.3	11.5%	3.8	33.6%	0.10	0.9%	0.1	1.0%	0.2	2.0%	11.2	100%
	13th	1.1	53.6%	0.01	0.4%	0.9	43.7%	0.0	0.0%	0.0	0.0%	0.05	2.3%	2.1	100%
	17th	6.6	29.6%	3.3	14.7%	12.0	54.5%	0.1	0.3%	0.02	0.1%	0.2	0.8%	22.1	100%
	19th	6.6	30.3%	1.0	4.6%	14.2	64.9%	0.0	0.0%	0.0	0.0%	0.04	0.2%	21.8	100%
	20th	4.3	61.4%	0.6	8.3%	1.9	28.0%	0.0	0.0%	0.2	2.3%	0.0	0.0%	6.9	100%
Northeast Total		24.3	45.2%	6.2	7.9%	32.8	44.9%	0.2	0.2%	0.3	0.7%	0.5	1.1%	64.2	100%
Southern															
	3rd	0.1	12.9%	0.01	1.9%	0.4	85%	0.0	0.0%	0.0	0.0%	0.0	0.0%	0.5	100%
	4th	14.8	32.4%	16.0	35.0%	13.9	30.4%	0.6	1.2%	0.1	0.3%	0.3	0.6%	45.7	100%
	10th	3.0	26.1%	1.1	9.5%	6.9	59.8%	0.1	1.2%	0.0	0.0%	0.4	3.4%	11.5	100%
	11th	2.1	84.2%	0.1	4.4%	0.3	11.4%	0.0	0.0%	0.0	0.0%	0.0	0.0%	2.5	100%
	12th	0.8	39.8%	0.04	1.9%	1.1	57.1%	0.0	0.0%	0.0	0.0%	0.02	1.2%	1.9	100%
	15th	1.4	52.3%	0.0	0.0%	1.3	47.7%	0.0	0.0%	0.0	0.0%	0.0	0.0%	2.6	100%
	16th	0.1	24.4%	0.2	52.2%	0.1	23.4%	0.0	0.0%	0.0	0.0%	0.0	0.0%	0.4	100%
Southern Total		22.2	38.9%	17.4	15.0%	24.0	45.0%	0.7	0.3%	0.1	0.0%	0.7	0.8%	65.2	100%
Western															
	6th	0.8	30.3%	0.0	0.0%	1.3	45.9%	0.1	4.5%	0.0	0.0%	0.5	19.4%	2.8	100%
	7th	3.9	91.3%	0.0	0.0%	0.4	8.7%	0.0	0.0%	0.0	0.0%	0.0	0.0%	4.2	100%
	9th	1.6	70.3%	0.0	0.0%	0.7	29.7%	0.0	0.0%	0.0	0.0%	0.0	0.0%	2.3	100%
	14th	0.2	97%	0.0	0.0%	0.01	2.8%	0.0	0.0%	0.0	0.0%	0.0	0.0%	0.2	100%
	21st	7.3	74.4%	0.11	1.1%	2.2	22.0%	0.15	1.6%	0.1	0.7%	0.02	0.2%	9.9	100%
	22nd	0.8	96.1%	0.003	0.3%	0.01	1.8%	0.0	0.8%	0.0	0.0%	0.0	0.0%	0.8	99%
Western Total		14.7	76.6%	0.1	0.2%	4.5	18.5%	0.3	1.1%	0.1	0.1%	0.6	3.3%	20.2	100%
	Missing JD Data	0.2		0.1		1.0		0.0		0.0		0.0		1.2	
Statewide Total		93.9	36.8%	56.0	22.0%	98.2	38.5%	2.5	1.0%	1.1	0.4%	3.3	1.3%	254.8	100%

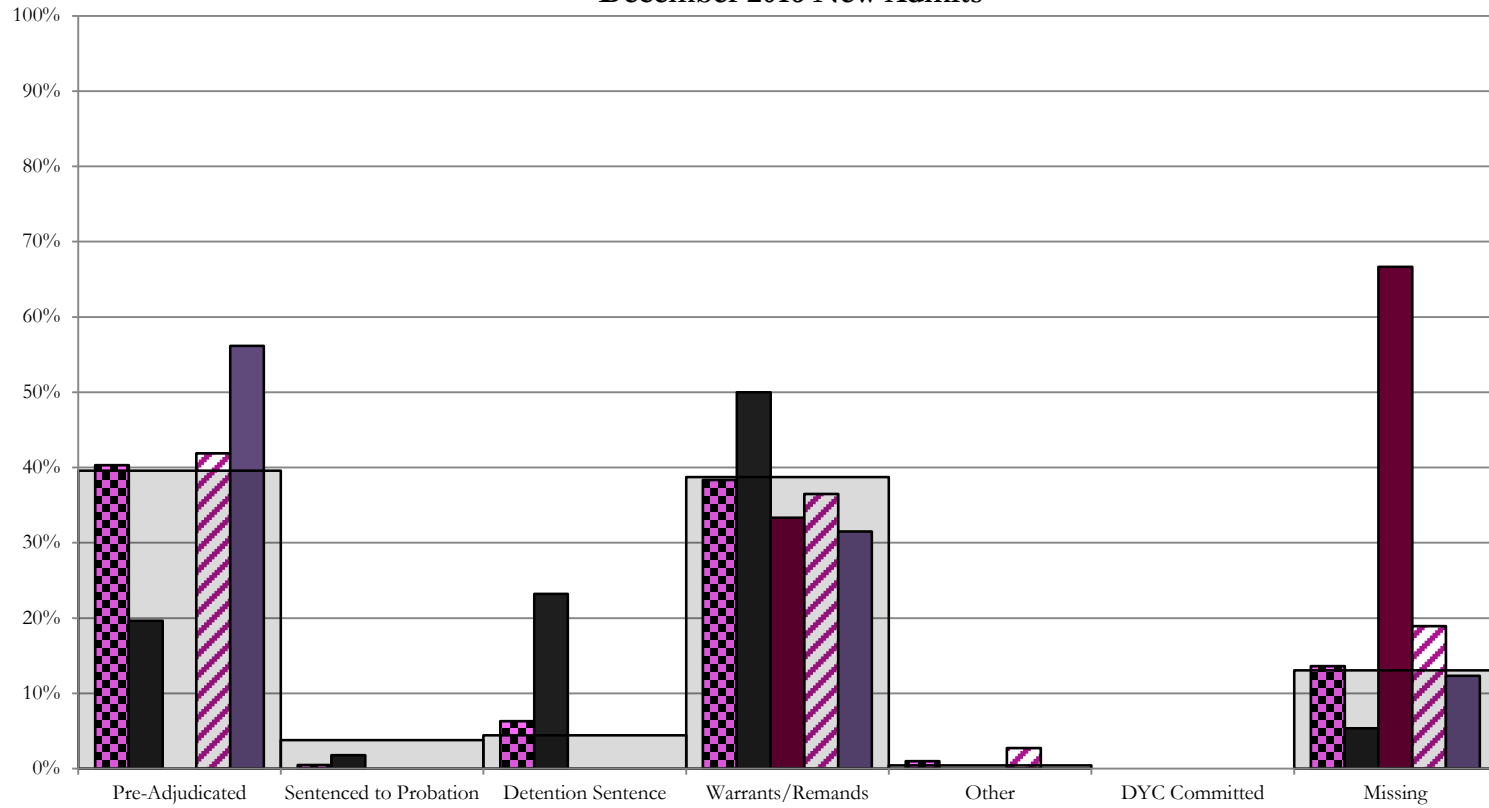
December 2016 SB94 JDSAG Supplemental Report

SB94 Reason Detained (RD) by Judicial District

Region	JD	Monthly New Admits	Pre-Adjudicated				Sentenced to Probation				Detention Sentence								Warrants/Remands				Other						DYC Committed		Missing					
			Felony		Misdemeanor		Technical Violator		New Charges		Probation Sentence		Detention Sentence		Valid Court Order (VCO) Truancy		Awaiting DSS (Social Services) Placement		Failure to Appear (FTA)		Failure to Comply (FTC)		Interstate Compact on Juveniles (ICJ) Hold		Immigration Hold		No Bond Hold		Out-of-Country Warrant		Institutional		Parole		Missing	
			#	%	#	%	#	%	#	%	#	%	#	%	#	%	#	%	#	%	#	%	#	%	#	%	#	%	#	%	#	%	#	%	#	%
Central Region																																				
	1st	56	6	10.7%	5	8.9%	0	0.0%	1	1.8%	0	0.0%	13	23.2%	0	0.0%	0	0.0%	10	17.9%	18	32.1%	0	0.0%	0	0.0%	0	0.0%	0	0.0%	0	0.0%	0	0.0%	3	5.4%
	2nd	74	24	32.4%	7	9.5%	0	0.0%	0	0.0%	0	0.0%	0	0.0%	0	0.0%	0	0.0%	10	13.5%	17	23.0%	2	2.7%	0	0.0%	0	0.0%	0	0.0%	0	0.0%	0	0.0%	14	18.9%
	5th	3	0	0.0%	0	0.0%	0	0.0%	0	0.0%	0	0.0%	0	0.0%	0	0.0%	0	0.0%	0	0.0%	1	33.3%	0	0.0%	0	0.0%	0	0.0%	0	0.0%	0	0.0%	0	0.0%	2	66.7%
	18th	73	20	27.4%	21	28.8%	0	0.0%	0	0.0%	0	0.0%	0	0.0%	0	0.0%	0	0.0%	7	9.6%	16	21.9%	0	0.0%	0	0.0%	0	0.0%	0	0.0%	0	0.0%	0	0.0%	9	12.3%
Central Total		206	50	24%	33	16%	0	0.0%	1	0.5%	0	0.0%	13	6.3%	0	0.0%	0	0.0%	27	13%	52	25%	2	1.0%	0	0.0%	0	0.0%	0	0.0%	0	0.0%	0	0.0%	28	13.6%
Northeast Region																																				
	8th	28	2	7.1%	6	21.4%	0	0.0%	0	0.0%	0	0.0%	1	3.6%	0	0.0%	0	0.0%	2	7.1%	13	46.4%	0	0.0%	0	0.0%	0	0.0%	0	0.0%	0	0.0%	0	0.0%	4	14.3%
	13th	1	1	100.0%	0	0.0%	0	0.0%	0	0.0%	0	0.0%	0	0.0%	0	0.0%	0	0.0%	0	0.0%	0	0.0%	0	0.0%	0	0.0%	0	0.0%	0	0.0%	0	0.0%	0	0.0%	0	0.0%
	17th	39	11	28.2%	3	7.7%	0	0.0%	0	0.0%	0	0.0%	0	0.0%	0	0.0%	0	0.0%	2	5.1%	11	28.2%	0	0.0%	0	0.0%	0	0.0%	0	0.0%	0	0.0%	0	0.0%	12	30.8%
	19th	35	8	22.9%	3	8.6%	9	25.7%	0	0.0%	0	0.0%	0	0.0%	0	0.0%	0	0.0%	2	5.7%	12	34.3%	0	0.0%	0	0.0%	0	0.0%	0	0.0%	0	0.0%	1	2.9%		
	20th	13	4	30.8%	3	23.1%	0	0.0%	0	0.0%	0	0.0%	2	15.4%	0	0.0%	0	0.0%	0	0.0%	1	7.7%	0	0.0%	0	0.0%	0	0.0%	0	0.0%	0	0.0%	3	23.1%		
Northeast Total		116	26	22%	15	13%	9	7.8%	0	0.0%	0	0.0%	3	2.6%	0	0.0%	0	0.0%	6	5.2%	37	32%	0	0.0%	0	0.0%	0	0.0%	0	0.0%	0	0.0%	0	0.0%	20	17%
Southern Region																																				
	3rd	0	0	0.0%	0	0%	0	0.0%	0	0.0%	0	0.0%	0	0.0%	0	0.0%	0	0.0%	0	0.0%	0	0.0%	0	0.0%	0	0.0%	0	0.0%	0	0.0%	0	0.0%	0	0.0%	0	0.0%
	4th	70	28	40.0%	10	14.3%	0	0.0%	6	8.6%	0	0.0%	1	1.4%	1	1.4%	0	0.0%	3	4.3%	17	24.3%	0	0.0%	0	0.0%	0	0.0%	0	0.0%	0	0.0%	0	0.0%	4	5.7%
	10th	32	7	21.9%	1	3.1%	0	0.0%	0	0.0%	0	0.0%	0	0.0%	0	0.0%	0	0.0%	5	15.6%	15	46.9%	0	0.0%	0	0.0%	0	0.0%	0	0.0%	0	0.0%	2	6.3%		
	11th	9	0	0.0%	0	0.0%	0	0.0%	0	0.0%	0	0.0%	0	0.0%	0	0.0%	0	0.0%	2	22.2%	5	55.6%	0	0.0%	0	0.0%	0	0.0%	0	0.0%	0	0.0%	2	22.2%		
	12th	3	2	66.7%	0	0.0%	0	0.0%	0	0.0%	0	0.0%	0	0.0%	0	0.0%	0	0.0%	1	33.3%	0	0.0%	0	0.0%	0	0.0%	0	0.0%	0	0.0%	0	0.0%	0	0.0%		
	15th	3	1	33.3%	0	0.0%	0	0.0%	0	0.0%	0	0.0%	0	0.0%	0	0.0%	0	0.0%	2	66.7%	0	0.0%	0	0.0%	0	0.0%	0	0.0%	0	0.0%	0	0.0%	0	0.0%		
	16th	2	1	50.0%	0	0.0%	0	0.0%	0	0.0%	0	0.0%	0	0.0%	0	0.0%	0	0.0%	0	0%	0	0.0%	0	0.0%	0	0.0%	0	0.0%	0	0.0%	0	0.0%	1	50.0%		
Southern Total		119	39	33%	11	9%	0	0.0%	6	5.0%	0	0.0%	3	2.5%	1	0.8%	0	0.0%	11	9%	39	33%	0	0.0%	0	0.0%	0	0.0%	0	0.0%	0	0.0%	0	0.0%	9	8%
Western Region																																				
	6th	4	2	50.0%	1	25.0%	0	0.0%	0	0.0%	0	0.0%	0	0.0%	0	0.0%	0	0.0%	1	25.0%	0	0.0%	0	0.0%	0	0.0%	0	0.0%	0	0.0%	0	0.0%	0	0.0%		
	7th	1	0	0.0%	1	100.0%	0	0.0%	0	0.0%	0	0.0%	0	0.0%	0	0.0%	0	0.0%	0	0.0%	0	0.0%	0	0.0%	0	0.0%	0	0.0%	0	0.0%	0	0.0%	0	0.0%		
	9th	4	0	0.0%	1	25.0%	1	25.0%	0	0.0%	0	0.0%	0	0.0%	0	0.0%	0	0.0%	1	25.0%	0	0.0%	0	0.0%	0	0.0%	0	0.0%	0	0.0%	0	0.0%	1	25.0%		
	14th	1	1	100.0%	0	0.0%	0	0.0%	0	0.0%	0	0.0%	0	0.0%	0	0.0%	0	0.0%	0	0.0%	0	0.0%	0	0.0%	0	0.0%	0	0.0%	0	0.0%	0	0.0%	0	0.0%		
	21st	21	6	28.6%	0	0.0%	0	0.0%	0	0.0%	0	0.0%	1	4.8%	0	0.0%	0	0.0%	3	14.3%	7	33.3%	0	0.0%	0	0.0%	0	0.0%	0	0.0%	0	0.0%	4	19.0%		
	22nd	3	0	0.0%	2	66.7%	1	33.3%	0	0.0%	0	0.0%	0	0.0%	0	0.0%	0	0.0%	0	0.0%	0	0.0%	0	0.0%	0	0.0%	0	0.0%	0	0.0%	0	0.0%	0	0.0%		
Western Total		34	9	26%	5	14.7%	2	5.9%	0	0.0%	0	0.0%	1	2.9%	0	0.0%	0	0.0%	3	8.8%	9	26%	0	0.0%	0	0.0%	0	0.0%	0	0.0%	0	0.0%	5	15%		
Individual RD Totals		475	124	26%	64	13%	11	2.3%	7	1.5%	0	0.0%	20	4.2%	1	0.2%	0	0.0%	47	10%	137	29%	2	0.4%	0	0.0%	0	0.0%	0	0.0%	0	0.0%	0	0.0%	62	13%
Statewide Totals		475	188	39.6%	18	3.8%					21			4.4%			184	38.7%	2		0.4%			0	0.0%	0	0.0%	62	13%							

Central Region

SB94 Reason Detained by Judicial District December 2016 New Admits



■ CENTRAL REGION, 206 New Admits

■ 1st JD, 56 New Admits

■ 5th JD, 3 New Admits

■ 2nd JD, 74 New Admits

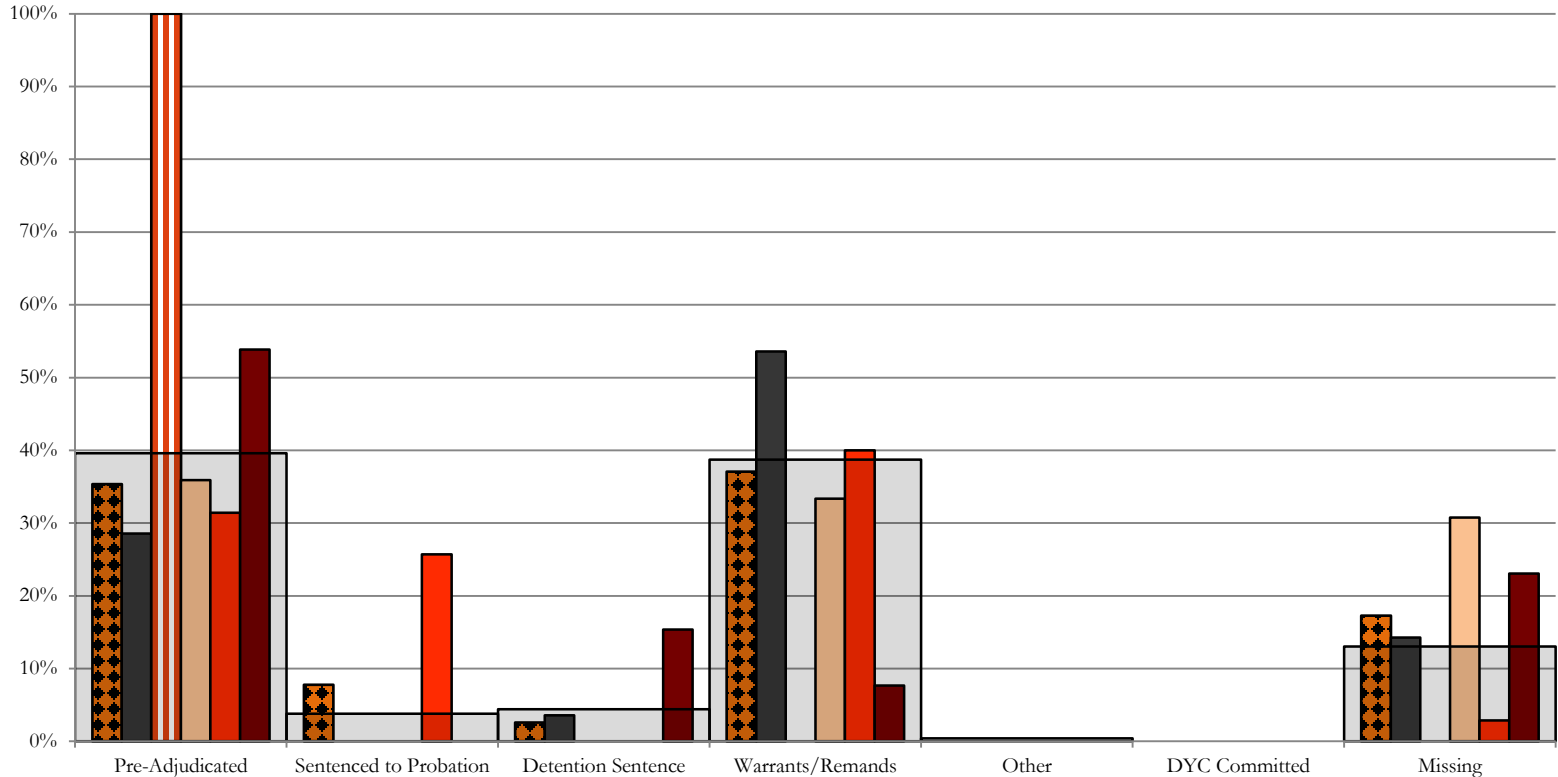
■ 18th JD, 73 New Admits

■ STATEWIDE, 475 New Admits

Northeast Region

SB94 Reason Detained by Judicial District

December 2016 New Admits

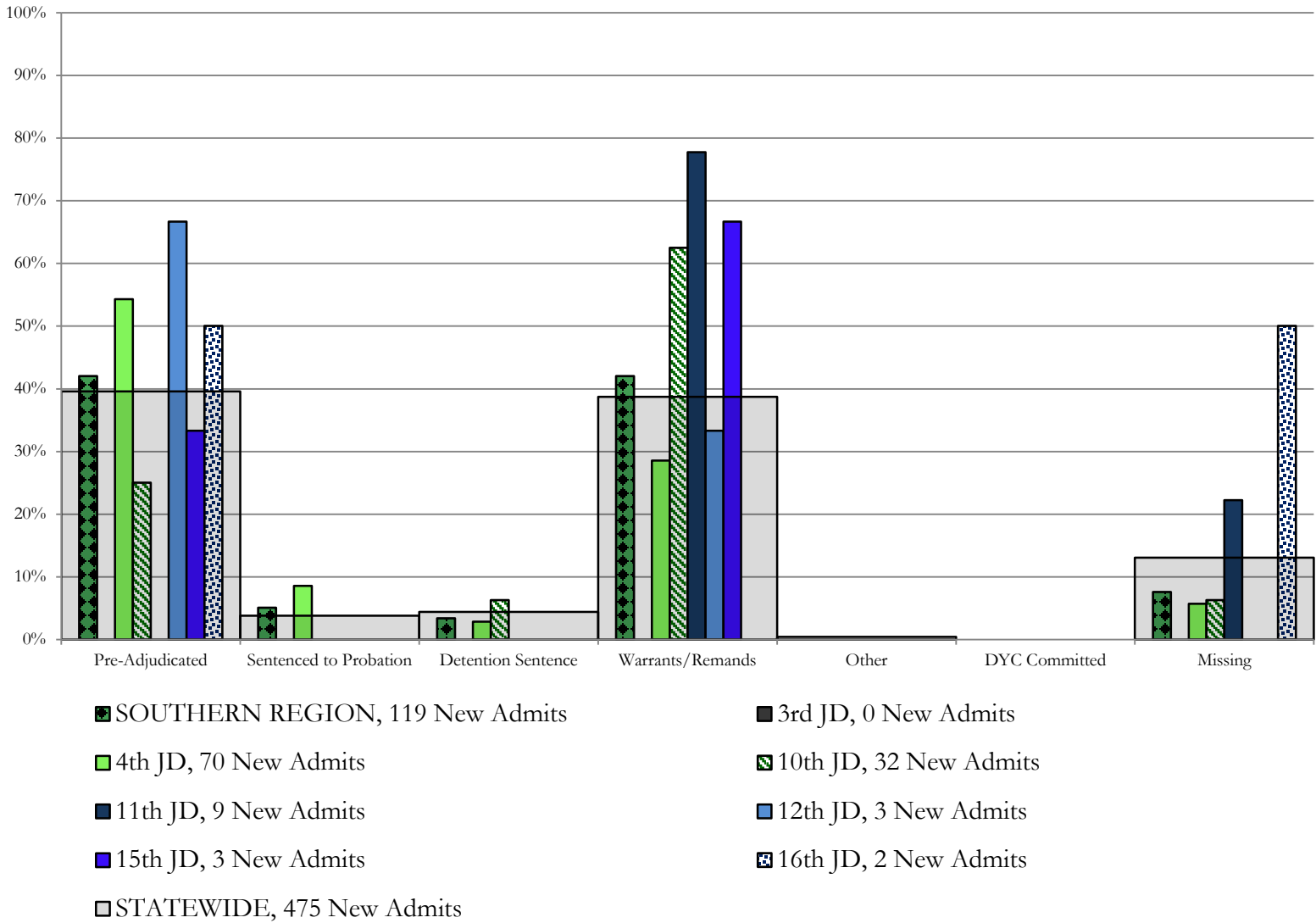


- NORTHEAST REGION, 116 New Admits
- 8th JD, 28 New Admits
- 13th JD, 1 New Admits
- 17th JD, 39 New Admits
- 19th JD, 35 New Admits
- 20th JD, 13 New Admits
- STATEWIDE, 475 New Admits

Southern Region

SB94 Reason Detained by Judicial District

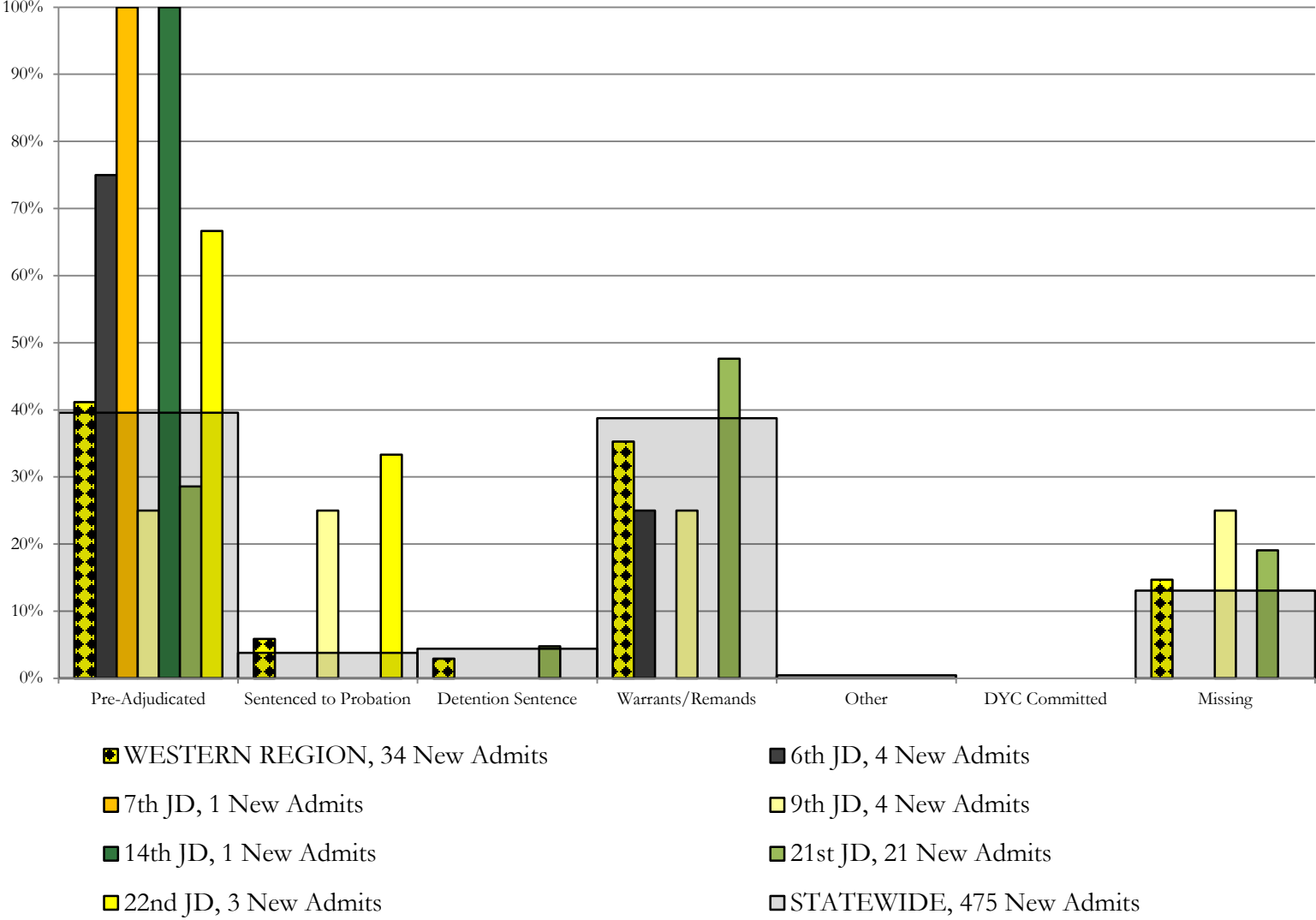
December 2016 New Admits



Western Region

SB94 Reason Detained by Judicial District

December 2016 New Admits



December 2016 SB94 JDSAG Supplemental Report

SB94 Reason Detained (RD) by Judicial District Year to Date

Region	JD	Year to Date New Admits	Pre-Adjudicated				Sentenced to Probation				Detention Sentence						Warrants/Remands				Other				DYC Committed				Missing					
			Felony		Misdemeanor		Technical Violator		New Charges		Probation Sentence		Detention Sentence		Valid Court Order (VCO) Truancy		Awaiting DSS (Social Services) Placement		Failure to Appear (FTA)		Failure to Comply (FTC)		Interstate Compact on Juveniles (ICJ) Hold		Immigration Hold		Institutional		Parole		Missing			
			#	%	#	%	#	%	#	%	#	%	#	%	#	%	#	%	#	%	#	%	#	%	#	%	#	%	#	%	#	%	#	%
Central Region																																		
	1st	344	62	18.0%	50	14.5%	3	0.9%	2	0.6%	0	0.0%	73	21.2%	0	0.0%	0	0.0%	39	11.3%	107	31.1%	0	0.0%	0	0.0%	0	0.0%	0	0.0%	0	0.0%	8	2.3%
	2nd	473	185	39.1%	34	7.2%	4	0.8%	3	0.6%	0	0.0%	0	0.0%	0	0.0%	0	0.0%	62	13.1%	81	17.1%	8	1.7%	0	0.0%	1	0.2%	0	0.0%	95	20.1%		
	5th	16	3	18.8%	0	0.0%	0	0.0%	0	0.0%	0	0.0%	2	12.5%	0	0.0%	0	0.0%	2	12.5%	5	31.3%	0	0.0%	0	0.0%	0	0.0%	0	0.0%	4	25.0%		
	18th	479	84	17.5%	123	25.7%	0	0.0%	1	0.2%	0	0.0%	8	1.7%	0	0.0%	0	0.0%	52	10.9%	129	26.9%	2	0.4%	0	0.0%	0	0.0%	0	0.0%	80	16.7%		
Central Total		1,312	334	25.5%	207	15.8%	7	0.5%	6	0.5%	0	0.0%	83	6.3%	0	0.0%	0	0.0%	155	11.8%	322	24.5%	10	0.8%	0	0.0%	1	0.1%	0	0.0%	187	14.3%		
Northeast Region																																		
	8th	159	14	8.8%	24	15.1%	0	0.0%	0	0.0%	0	0.0%	7	4.4%	0	0.0%	0	0.0%	14	8.8%	92	57.9%	0	0.0%	0	0.0%	0	0.0%	0	0.0%	8	5.0%		
	13th	29	10	34.5%	4	13.8%	3	10.3%	0	0.0%	0	0.0%	0	0.0%	1	3.4%	0	0.0%	3	10.3%	8	27.6%	0	0.0%	0	0.0%	0	0.0%	0	0.0%	0	0.0%		
	17th	254	75	29.5%	26	10.2%	3	1.2%	0	0.0%	0	0.0%	0	0.0%	0	0.0%	0	0.0%	29	11.4%	91	35.8%	0	0.0%	0	0.0%	0	0.0%	0	0.0%	30	11.8%		
	19th	281	74	26.3%	44	15.7%	54	19.2%	0	0.0%	0	0.0%	8	2.8%	1	0.4%	0	0.0%	17	6.0%	80	28.5%	0	0.0%	0	0.0%	0	0.0%	1	0.4%	2	0.7%		
	20th	107	26	24.3%	16	15.0%	7	6.5%	0	0.0%	0	0.0%	23	21.5%	0	0.0%	0	0.0%	2	1.9%	26	24.3%	0	0.0%	0	0.0%	0	0.0%	0	0.0%	7	6.5%		
Northeast Total		830	199	24.0%	114	13.7%	67	8.1%	0	0.0%	0	0.0%	38	4.6%	2	0.2%	0	0.0%	65	7.8%	297	35.8%	0	0.0%	0	0.0%	0	0.0%	1	0.1%	47	5.7%		
Southern Region																																		
	3rd	6	1	16.7%	1	16.7%	2	33.3%	0	0.0%	0	0.0%	0	0.0%	0	0.0%	0	0.0%	1	16.7%	1	16.7%	0	0.0%	0	0.0%	0	0.0%	0	0.0%	0	0.0%		
	4th	423	140	33.1%	41	9.7%	2	0.5%	29	6.9%	0	0.0%	3	0.7%	1	0.2%	1	0.2%	37	8.7%	142	33.6%	0	0.0%	0	0.0%	6	1.4%	1	0.2%	20	4.7%		
	10th	145	28	19.3%	10	6.9%	1	0.7%	1	0.7%	0	0.0%	6	4.1%	0	0.0%	0	0.0%	37	25.5%	59	40.7%	0	0.0%	0	0.0%	1	0.7%	0	0.0%	2	1.4%		
	11th	58	2	3.4%	2	3.4%	0	0.0%	0	0.0%	0	0.0%	0	0.0%	0	0.0%	1	1.7%	13	22.4%	17	29.3%	0	0.0%	0	0.0%	0	0.0%	0	0.0%	23	39.7%		
	12th	19	8	42.1%	3	15.8%	1	5.3%	0	0.0%	0	0.0%	0	0.0%	0	0.0%	3	15.8%	3	15.8%	3	15.8%	0	0.0%	0	0.0%	0	0.0%	0	0.0%	1	5.3%		
	15th	15	4	26.7%	1	6.7%	0	0.0%	0	0.0%	0	0.0%	3	20.0%	0	0.0%	0	0.0%	0	0.0%	6	40.0%	0	0.0%	0	0.0%	0	0.0%	0	0.0%	1	6.7%		
	16th	8	2	25.0%	2	25.0%	0	0.0%	0	0.0%	0	0.0%	1	12.5%	0	0.0%	0	0.0%	0	0.0%	0	0.0%	0	0.0%	0	0.0%	0	0.0%	0	0.0%	3	37.5%		
Southern Total		674	185	27.4%	60	8.9%	6	0.9%	30	4.5%	0	0.0%	13	1.9%	1	0.1%	2	0.3%	91	13.5%	228	33.8%	0	0.0%	0	0.0%	7	1.0%	1	0.1%	50	7.4%		
Western Region																																		
	6th	31	12	38.7%	6	19.4%	6	19.4%	0	0.0%	0	0.0%	0	0.0%	0	0.0%	0	0.0%	0	0.0%	4	12.9%	0	0.0%	0	0.0%	0	0.0%	0	0.0%	3	9.7%		
	7th	33	11	33.3%	3	9.1%	0	0.0%	0	0.0%	0	0.0%	5	15.2%	0	0.0%	0	0.0%	3	9.1%	11	33.3%	0	0.0%	0	0.0%	0	0.0%	0	0.0%	0	0.0%		
	9th	22	3	13.6%	1	4.5%	6	27.3%	0	0.0%	0	0.0%	0	0.0%	0	0.0%	0	0.0%	1	4.5%	3	13.6%	0	0.0%	0	0.0%	0	0.0%	0	0.0%	8	36.4%		
	14th	5	3	60.0%	0	0.0%	0	0.0%	0	0.0%	0	0.0%	0	0.0%	0	0.0%	0	0.0%	0	0.0%	1	20.0%	0	0.0%	0	0.0%	0	0.0%	0	0.0%	1	20.0%		
	21st	119	35	29.4%	13	10.9%	1	0.8%	0	0.0%	0	0.0%	5	4.2%	0	0.0%	0	0.0%	8	6.7%	48	40.3%	0	0.0%	0	0.0%	0	0.0%	0	0.0%	9	7.6%		
	22nd	11	1	9.1%	3	27.3%	3	27.3%	0	0.0%	0	0.0%	0	0.0%	0	0.0%	0	0.0%	1	9.1%	2	18.2%	0	0.0%	0	0.0%	0	0.0%	0	0.0%	1	9.1%		
Western Total		221	65	29.4%	26	11.8%	16	7.2%	0	0.0%	0	0.0%	10	4.5%	0	0.0%	0	0.0%	13	5.9%	69	31.2%	0	0.0%	0	0.0%	0	0.0%	0	0.0%	22	10.0%		
Individual RD Totals		3,037	783	25.8%	407	13.4%	96	3.2%	36	1.2%	0	0.0%	144	4.7%	3	0.1%	2	0.1%	324	10.7%	916	30.2%	10	0.3%	0	0.0%	8	0.3%	2	0.1%	306	10.1%		
Statewide Totals		3,037	1,190	39.2%	407	13.4%	96	3.2%	36	1.2%	0	0.0%	144	4.7%	3	0.1%	2	0.1%	324	10.7%	916	30.2%	10	0.3%	0	0.0%	8	0.3%	2	0.1%	306	10.1%		

December 2016 SB94 Supplemental Report

DYC Detention Maximum Youth Served by Judicial District¹

Region	JD	Detention Capacity	Detention ADP		Maximum Youth Served on a Single Day ^{2,3}			
			December 2016	YTD	December 2016		YTD	
					Number of Youth	% of Detention Capacity	Number of Youth	% of Detention Capacity
<i>Central Region</i>								
	1st	37	18.1	20.4	23	62.2%	32	86.5%
	2nd	64	42.5	45.2	49	76.6%	59	92.2%
	5th	4	0.4	1.2	3	75.0%	4	100.0%
	18th	61	45.5	37.2	55	90.2%	55	90.2%
Central Region		166	106.6	104.0	117	70.5%	124	74.7%
<i>Northeast Region</i>								
	8th	21	12.3	11.2	16	76.2%	19	90.5%
	13th	5	1.3	2.1	3	60.0%	5	100.0%
	17th	30	24.5	22.1	30	100.0%	30	100.0%
	19th	25	18.1	21.8	22	88.0%	32	128.0%
	20th	13	7.1	6.9	10	76.9%	12	92.3%
Northeast Region		94	63.3	64.2	71	75.5%	76	80.9%
<i>Southern Region</i>								
	3rd	2	0.0	0.5	0	0.0%	2	100.0%
	4th	51	44.4	45.7	53	103.9%	53	103.9%
	10th	13	13.7	11.5	17	130.8%	17	130.8%
	11th	8	3.7	2.5	5	62.5%	6	75.0%
	12th	4	1.4	1.9	4	100.0%	4	100.0%
	15th	2	1.7	2.6	3	150.0%	6	300.0%
	16th	3	0.9	0.4	2	66.7%	2	66.7%
Southern Region		83	65.9	65.2	75	90.4%	77	92.8%
<i>Western Region</i>								
	6th	5	2.8	2.8	6	120.0%	7	140.0%
	7th	7	3.1	4.2	4	57.1%	9	128.6%
	9th	6	1.2	2.3	2	33.3%	5	83.3%
	14th	3	0.6	0.2	1	33.3%	2	66.7%
	21st	14	12.8	9.9	18	128.6%	18	128.6%
	22nd	4	1.1	0.8	2	50.0%	3	75.0%
Western Region		39	21.6	20.2	31	79.5%	31	79.5%
<i>Missing JD or Multiple JDs</i>			0.4	1.2				
Statewide		382	257.9	254.8	286	74.9%	286	74.9%

¹ Maximum youth served is the highest number of youth in detention on a single day during the month or fiscal year.

² Regional figures are not the sum of judicial districts, but represent the maximum count on one day for the entire region.

³ State figures are not the sum of regional figures, but represent the maximum count on one day for the entire state.

December 2016
SB94 Supplemental Report

SB94 Community ADP by Judicial District

Region	JD	Committed		Diversion		ICJ		Municipal		Pre-Adjudicated		Sentenced		VCO		Total	
		December	YTD	December	YTD	December	YTD	December	YTD	December	YTD	December	YTD	December	YTD	December	YTD
<i>Central Region</i>																	
	1st	1.0	0.4	0.0	0.0	0.0	0.0	9.0	9.3	263.9	249.6	22.3	16.1	0.0	0.0	296.2	275.5
	2nd	7.8	4.9	0.0	0.0	1.0	0.2	0.0	0.1	269.9	255.2	49.8	49.9	0.0	0.0	328.5	310.3
	5th	0.0	0.0	8.3	6.9	0.0	0.0	0.0	0.0	14.8	14.8	23.0	25.8	0.0	0.0	46.1	47.5
	18th	1.0	1.2	5.0	5.0	0.0	0.0	0.0	0.0	333.0	315.9	56.3	54.3	8.0	8.4	403.3	384.8
Central Total		9.8	6.5	13.3	11.9	1.0	0.3	9.0	9.4	881.5	835.5	151.5	146.1	8.0	8.4	1074.0	1018.1
<i>Northeast Region</i>																	
	8th	0.0	0.0	2.0	2.5	0.0	0.0	0.0	0.0	41.0	43.1	26.2	30.1	0.0	0.0	69.2	75.7
	13th	1.0	0.4	0.0	0.0	0.0	0.0	0.0	0.1	11.5	11.2	10.7	10.1	7.8	4.2	30.9	25.9
	17th	3.7	3.8	0.0	0.0	0.0	0.0	1.0	1.0	244.1	204.2	67.1	56.5	0.0	0.0	315.9	265.5
	19th	0.2	0.3	0.0	0.0	0.0	0.0	0.0	0.0	53.6	53.3	34.5	38.0	1.0	1.1	89.2	92.6
	20th	0.0	1.0	19.7	9.8	0.0	0.0	0.0	0.0	65.7	47.4	58.0	54.6	4.8	4.3	148.2	117.0
Northeast Total		4.8	5.4	21.7	12.2	0.0	0.0	1.0	1.1	415.8	359.3	196.5	189.1	13.5	9.6	653.4	576.7
<i>Southern Region</i>																	
	3rd	0.0	0.0	0.0	0.0	0.0	0.0	0.0	0.0	12.5	12.0	8.0	6.9	1.0	1.0	21.5	19.9
	4th	5.0	3.5	0.0	0.0	0.0	0.0	102.0	98.5	317.7	274.5	174.2	154.9	2.6	2.1	601.5	533.5
	10th	0.0	0.0	0.0	0.0	0.0	0.0	89.0	83.9	29.5	25.3	21.1	21.4	10.2	7.4	149.8	138.1
	11th	0.0	0.0	0.0	0.0	0.0	0.0	1.5	0.7	16.0	16.2	31.5	33.4	1.0	1.1	50.0	51.4
	12th	0.0	0.0	0.0	0.0	0.0	0.0	2.5	1.9	11.8	7.1	4.0	1.9	0.0	0.0	18.3	10.9
	15th	0.0	0.0	0.0	0.0	0.0	0.0	0.0	0.0	5.0	5.1	23.0	16.6	0.0	0.0	28.0	21.7
	16th	0.0	0.0	0.0	0.0	0.0	0.0	0.0	0.0	5.3	3.9	16.0	16.2	24.9	21.5	46.2	41.6
Southern Total		5.0	3.6	0.0	0.0	0.0	0.0	195.0	185.0	397.9	344.1	277.8	251.3	39.7	33.1	915.3	817.2
<i>Western Region</i>																	
	6th	0.0	0.0	1.0	1.0	0.0	0.0	0.0	0.0	17.5	14.3	0.0	0.1	0.0	0.0	18.5	15.4
	7th	0.0	0.2	7.5	6.7	0.0	0.0	1.0	0.7	11.6	11.5	23.9	20.1	0.0	0.0	44.0	39.2
	9th	0.0	0.0	0.0	0.0	0.0	0.0	0.0	0.0	8.0	6.9	4.8	9.1	0.0	0.0	12.7	15.9
	14th	0.0	0.0	9.1	12.1	0.0	0.0	0.0	0.0	3.4	1.9	2.0	1.4	0.0	0.0	14.5	15.5
	21st	0.0	0.0	0.0	0.3	0.0	0.0	2.0	2.0	37.0	32.8	14.2	12.0	0.0	0.0	53.3	47.2
	22nd	0.0	0.0	0.0	0.0	0.0	0.0	0.0	0.0	7.7	7.7	4.0	3.7	0.0	0.0	11.7	11.3
Western Total		0.0	0.2	17.7	20.2	0.0	0.0	3.0	2.7	85.2	75.0	48.8	46.4	0.0	0.0	154.7	144.4
Statewide Total		19.6	15.7	52.6	44.3	1.0	0.3	208.0	198.1	1780.4	1613.9	674.6	633.0	61.2	51.1	2797.4	2556.4