

November 2016
FY 2016-2017
SB94 JDSAG SUPPLEMENTAL REPORT

Prepared by the Division of Youth Corrections (DYC)
Research and Evaluation Unit
December 28th, 2016



COLORADO

**Office of Children,
Youth & Families**

Division of Youth Corrections

November 2016 SB94 Supplemental Report

DYC Commitment ADP & New Commitments by Judicial District

Region	JD ¹	2017 Population Estimates ²	ADP ³		New Commitments		
			November 2016	YTD	November 2016	YTD	YTD Rate ⁴
<i>Central Region</i>							
	1st	56,020	73.2	73.6	2	16	2.9
	2nd	62,634	113.2	119.5	3	17	2.7
	5th	10,162	9.9	8.9	0	2	2.0
	18th	121,363	63.4	66.0	1	13	1.1
Central Total		250,179	259.6	268.0	6	48	1.9
<i>Northeast Region</i>							
	8th	32,983	45.3	43.5	2	18	5.5
	13th	8,520	5.6	6.3	0	1	1.2
	17th	71,425	75.6	73.5	1	14	2.0
	19th	36,924	53.0	50.6	8	20	5.4
	20th	32,693	9.4	9.1	0	4	1.2
Northeast Total		182,545	188.9	183.0	11	57	3.1
<i>Southern Region</i>							
	3rd	1,871	1.0	1.1	0	1	5.3
	4th	81,725	76.1	78.9	5	16	2.0
	10th	17,869	37.0	41.1	1	7	3.9
	11th	7,196	4.7	4.1	1	1	1.4
	12th	5,241	7.9	8.8	1	2	3.8
	15th	2,102	1.2	0.5	1	2	9.5
	16th	2,749	-	-	0	0	0.0
Southern Total		118,753	127.9	134.6	9	29	2.4
<i>Western Region</i>							
	6th	6,491	6.8	6.7	1	3	4.6
	7th	10,788	7.9	8.8	0	2	1.9
	9th	9,477	5.8	3.8	1	3	3.2
	14th	5,635	3.0	3.0	0	0	0.0
	21st	15,968	35.1	36.5	1	10	6.3
	22nd	3,108	3.0	2.7	0	0	0.0
Western Total		51,467	61.5	61.4	3	18	3.5
Statewide Total		602,944	637.9	647.0	29	152	2.5

¹ JD represents the judicial district in which the client was committed. Regional totals are a sum of their respective judicial districts. Regional totals reported here may differ slightly from those reported in the Monthly Population Report, where region is defined by active caseloads.

² Source: DOLA 2017 Estimates

³ Due to rounding, totals shown may not be an exact sum of the subtotals.

⁴ Per 10,000 youth in the population

November 2016 SB94 Supplemental Report

DYC Detention ADP and New Detention Admissions by Judicial District

Region	JD	2017 Population Estimates ¹	ADP		New Admits		
			November 2016	YTD	November 2016	YTD	YTD New Admit Rate ²
<i>Central Region</i>							
	1st	56,020	23.0	21.1	58	290	51.8
	2nd	62,634	42.6	45.7	72	399	63.7
	5th	10,162	1.9	1.4	4	13	12.8
	18th	121,363	43.8	35.6	78	406	33.5
Central Total		250,179	111.2	103.8	212	1,108	44.3
<i>Northeast Region</i>							
	8th	32,983	10.8	11.3	32	132	40.0
	13th	8,520	3.7	2.5	6	29	34.0
	17th	71,425	21.7	21.6	47	215	30.1
	19th	36,924	24.6	22.7	52	247	66.9
	20th	32,693	8.8	6.9	16	94	28.8
Northeast Total		182,545	69.7	65.0	153	717	39.3
<i>Southern Region</i>							
	3rd	1,871	0.0	0.6	0	6	32.1
	4th	81,725	46.2	45.9	80	353	43.2
	10th	17,869	11.2	11.1	27	113	63.2
	11th	7,196	2.3	2.3	7	49	68.1
	12th	5,241	1.6	2.1	5	16	30.5
	15th	2,102	2.3	2.8	0	12	57.1
	16th	2,749	0.6	0.2	2	6	21.8
Southern Total		118,753	64.1	65.0	121	555	46.7
<i>Western Region</i>							
	6th	6,491	3.9	2.6	4	26	40.1
	7th	10,788	4.1	4.5	4	32	29.7
	9th	9,477	0.8	2.5	2	18	19.0
	14th	5,635	0.0	0.2	0	4	7.1
	21st	15,968	10.4	9.3	20	98	61.4
	22nd	3,108	1.6	0.8	3	8	25.7
Western Total		51,467	20.8	19.8	33	186	36.1
<i>Missing JD or Multiple JDs</i>			<i>0.2</i>	<i>1.4</i>			
Statewide Total		602,944	266.0	255.0	519	2,566	42.6

¹ Source: DOLA 2017 Estimates

² Per 10,000 youth in the population

November 2016 SB94 Supplemental Report

DYC Detention LOS by Judicial District

Region	JD	YTD Detention Releases	YTD LOS (days)	LOS (days) Compared to State AVG
<i>Central Region</i>				
	1st	289	11.4	-2.9
	2nd	417	16.3	2.0
	5th	14	14.8	0.5
	18th	394	10.8	-3.5
Central Total		1,114	13.1	-1.2
<i>Northeast Region</i>				
	8th	131	14.0	-0.3
	13th	30	11.1	-3.2
	17th	207	12.1	-2.2
	19th	243	13.2	-1.1
	20th	92	9.3	-5.0
Northeast Total		703	12.4	-1.9
<i>Southern Region</i>				
	3rd	7	16.2	1.9
	4th	347	18.2	3.9
	10th	110	14.3	0.0
	11th	47	6.6	-7.7
	12th	16	21.3	7.0
	15th	13	29.9	15.6
	16th	6	5.2	-9.1
Southern Total		546	16.6	2.3
<i>Western Region</i>				
	6th	27	11.5	-2.8
	7th	29	16.3	2.0
	9th	17	18.2	3.9
	14th	4	5.8	-8.5
	21st	97	13.2	-1.1
	22nd	7	6.8	-7.5
Western Total		181	13.5	-0.8
Statewide Total		2,550	14.3	-

November 2016 SB94 JDSAG Supplemental Report

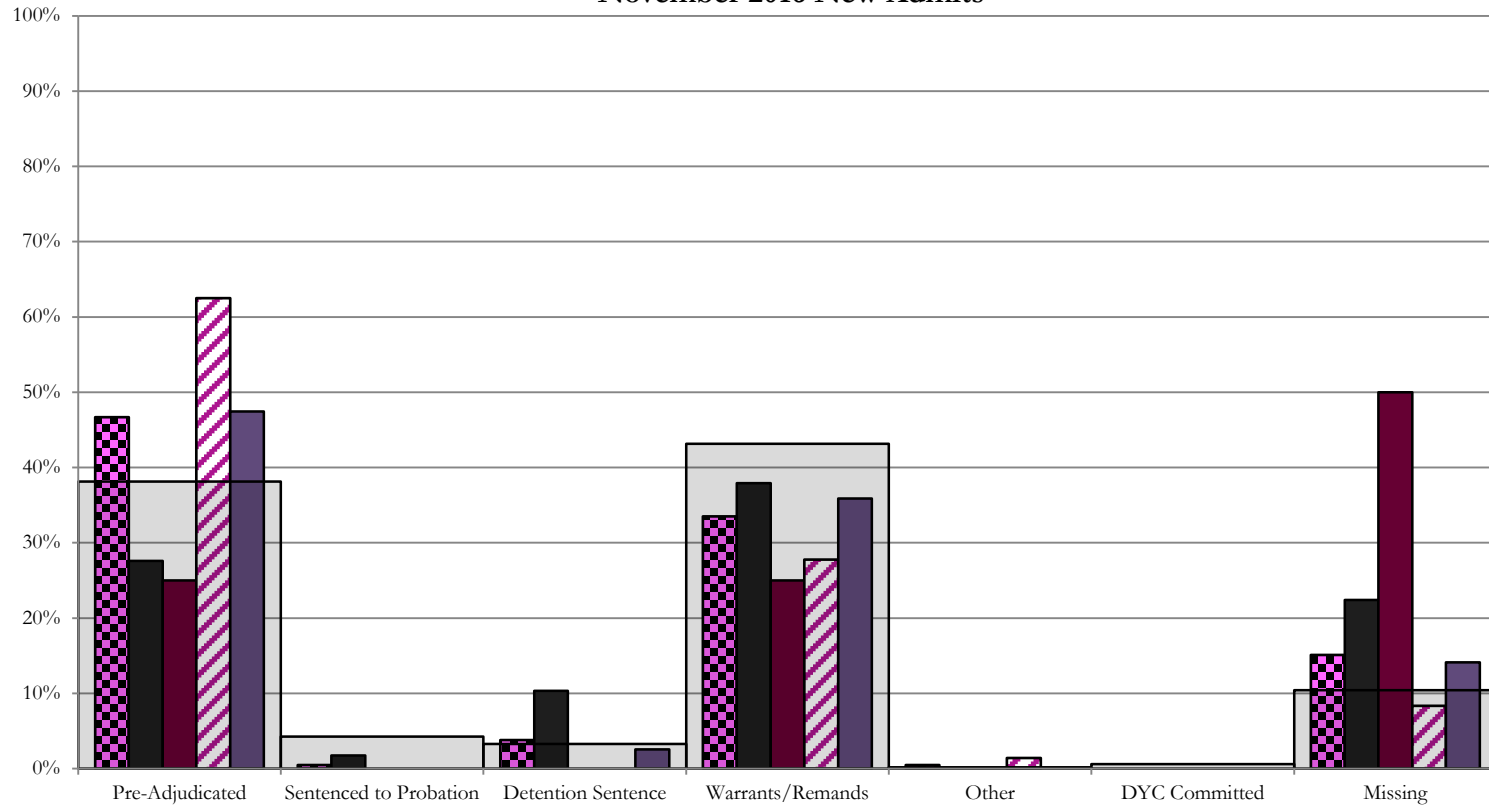
SB94 Reason Detained (RD) by Judicial District

Region	JD	Monthly New Admits	Pre-Adjudicated				Sentenced to Probation				Detention Sentence								Warrants/Remands				Other						DYC Committed		Missing					
			Felony		Misdemeanor		Technical Violator		New Charges		Probation Sentence		Detention Sentence		Valid Court Order (VCO) Truancy		Awaiting DSS (Social Services) Placement		Failure to Appear (FTA)		Failure to Comply (FTC)		Interstate Compact on Juveniles (ICJ) Hold		Immigration Hold		No Bond Hold		Out-of-Country Warrant		Institutional		Parole		Missing	
			#	%	#	%	#	%	#	%	#	%	#	%	#	%	#	%	#	%	#	%	#	%	#	%	#	%	#	%	#	%	#	%	#	%
Central Region																																				
	1st	58	14	24.1%	2	3.4%	0	0.0%	1	1.7%	0	0.0%	6	10.3%	0	0.0%	0	0.0%	6	10.3%	16	27.6%	0	0.0%	0	0.0%	0	0.0%	0	0.0%	0	0.0%	0	0.0%	13	22.4%
	2nd	72	40	55.6%	5	6.9%	0	0.0%	0	0.0%	0	0.0%	0	0.0%	0	0.0%	0	0.0%	8	11.1%	12	16.7%	1	1.4%	0	0.0%	0	0.0%	0	0.0%	0	0.0%	0	0.0%	6	8.3%
	5th	4	1	25.0%	0	0.0%	0	0.0%	0	0.0%	0	0.0%	0	0.0%	0	0.0%	0	0.0%	1	25.0%	0	0.0%	0	0.0%	0	0.0%	0	0.0%	0	0.0%	0	0.0%	0	0.0%	2	50.0%
	18th	78	13	16.7%	24	30.8%	0	0.0%	0	0.0%	0	0.0%	2	2.6%	0	0.0%	0	0.0%	6	7.7%	22	28.2%	0	0.0%	0	0.0%	0	0.0%	0	0.0%	0	0.0%	0	0.0%	11	14.1%
Central Total		212	68	32%	31	15%	0	0.0%	1	0.5%	0	0.0%	8	3.8%	0	0.0%	0	0.0%	21	10%	50	24%	1	0.5%	0	0.0%	0	0.0%	0	0.0%	0	0.0%	0	0.0%	32	15.1%
Northeast Region																																				
	8th	32	4	12.5%	5	15.6%	0	0.0%	0	0.0%	0	0.0%	2	6.3%	0	0.0%	0	0.0%	1	3.1%	19	59.4%	0	0.0%	0	0.0%	0	0.0%	0	0.0%	0	0.0%	0	0.0%	1	3.1%
	13th	6	2	33.3%	0	0.0%	0	0.0%	0	0.0%	0	0.0%	0	0.0%	0	0.0%	0	0.0%	4	66.7%	0	0.0%	0	0.0%	0	0.0%	0	0.0%	0	0.0%	0	0.0%	0	0.0%	0	0.0%
	17th	47	10	21.3%	7	14.9%	0	0.0%	0	0.0%	0	0.0%	0	0.0%	0	0.0%	0	0.0%	9	19.1%	16	34.0%	0	0.0%	0	0.0%	0	0.0%	0	0.0%	0	0.0%	0	0.0%	5	10.6%
	19th	52	13	25.0%	2	3.8%	13	25.0%	0	0.0%	0	0.0%	0	0.0%	0	0.0%	0	0.0%	7	13.5%	16	30.8%	0	0.0%	0	0.0%	0	0.0%	0	0.0%	1	1.9%	0	0.0%	0	0.0%
	20th	16	1	6.3%	2	12.5%	0	0.0%	0	0.0%	0	0.0%	5	31.3%	0	0.0%	0	0.0%	0	0.0%	2	12.5%	0	0.0%	0	0.0%	0	0.0%	0	0.0%	0	0.0%	0	0.0%	6	37.5%
Northeast Total		153	30	20%	16	10%	13	8.5%	0	0.0%	0	0.0%	7	4.6%	0	0.0%	0	0.0%	17	11.1%	57	37%	0	0.0%	0	0.0%	0	0.0%	0	0.0%	1	0.7%	12	8%		
Southern Region																																				
	3rd	0	0	0.0%	0	0%	0	0.0%	0	0.0%	0	0.0%	0	0.0%	0	0.0%	0	0.0%	0	0.0%	0	0.0%	0	0.0%	0	0.0%	0	0.0%	0	0.0%	0	0.0%	0	0.0%	0	0.0%
	4th	80	23	28.8%	8	10.0%	0	0.0%	5	6.3%	0	0.0%	0	0.0%	0	0.0%	0	0.0%	8	10.0%	32	40.0%	0	0.0%	0	0.0%	0	0.0%	1	1.3%	1	1.3%	2	2.5%	0	0.0%
	10th	27	8	29.6%	1	3.7%	0	0.0%	0	0.0%	0	0.0%	0	0.0%	0	0.0%	0	0.0%	5	18.5%	10	37.0%	0	0.0%	0	0.0%	0	0.0%	0	0.0%	0	0.0%	0	0.0%	3	11.1%
	11th	7	0	0.0%	0	0.0%	0	0.0%	0	0.0%	0	0.0%	0	0.0%	0	0.0%	0	0.0%	2	28.6%	2	28.6%	0	0.0%	0	0.0%	0	0.0%	0	0.0%	0	0.0%	3	42.9%	0	0.0%
	12th	5	2	40.0%	0	0.0%	0	0.0%	0	0.0%	0	0.0%	0	0.0%	0	0.0%	0	0.0%	1	20.0%	2	40.0%	0	0.0%	0	0.0%	0	0.0%	0	0.0%	0	0.0%	0	0.0%	0	0.0%
	15th	0	0	0.0%	0	0.0%	0	0.0%	0	0.0%	0	0.0%	0	0.0%	0	0.0%	0	0.0%	0	0.0%	0	0.0%	0	0.0%	0	0.0%	0	0.0%	0	0.0%	0	0.0%	0	0.0%	0	0.0%
	16th	2	1	50.0%	0	0.0%	0	0.0%	0	0.0%	0	0.0%	1	50.0%	0	0.0%	0	0.0%	0	0.0%	0	0%	0	0.0%	0	0.0%	0	0.0%	0	0.0%	0	0.0%	0	0.0%	0	0.0%
Southern Total		121	34	28%	9	7%	0	0.0%	5	4.1%	0	0.0%	1	0.8%	0	0.0%	0	0.0%	16	13%	46	38%	0	0.0%	0	0.0%	0	0.0%	0	0.0%	1	0.8%	1	0.8%	8	7%
Western Region																																				
	6th	4	2	50.0%	0	0.0%	1	25.0%	0	0.0%	0	0.0%	0	0.0%	0	0.0%	0	0.0%	0	0.0%	0	0.0%	0	0.0%	0	0.0%	0	0.0%	0	0.0%	0	0.0%	1	25%	0	0.0%
	7th	4	1	25.0%	0	0.0%	0	0.0%	0	0.0%	0	0.0%	0	0.0%	0	0.0%	0	0.0%	3	75.0%	0	0.0%	0	0.0%	0	0.0%	0	0.0%	0	0.0%	0	0.0%	0	0.0%	0	0.0%
	9th	2	0	0.0%	0	0.0%	1	50.0%	0	0.0%	0	0.0%	0	0.0%	0	0.0%	0	0.0%	1	50.0%	0	0.0%	0	0.0%	0	0.0%	0	0.0%	0	0.0%	0	0.0%	0	0.0%	0	0.0%
	14th	0	0	0.0%	0	0.0%	0	0.0%	0	0.0%	0	0.0%	0	0.0%	0	0.0%	0	0.0%	0	0.0%	0	0.0%	0	0.0%	0	0.0%	0	0.0%	0	0.0%	0	0.0%	0	0.0%	0	0.0%
	21st	20	4	20.0%	2	10.0%	0	0.0%	0	0.0%	0	0.0%	1	5.0%	0	0.0%	0	0.0%	1	5.0%	11	55.0%	0	0.0%	0	0.0%	0	0.0%	0	0.0%	0	0.0%	1	5.0%	0	0.0%
	22nd	3	1	33.3%	0	0.0%	1	33.3%	0	0.0%	0	0.0%	0	0.0%	0	0.0%	0	0.0%	1	33.3%	0	0.0%	0	0.0%	0	0.0%	0	0.0%	0	0.0%	0	0.0%	0	0.0%	0	0.0%
Western Total		33	8	24%	2	6.1%	3	9.1%	0	0.0%	0	0.0%	1	3.0%	0	0.0%	0	0.0%	2	6.1%	15	45%	0	0.0%	0	0.0%	0	0.0%	0	0.0%	0	0.0%	2	6%		
Individual RD Totals		519	140	27%	58	11%	16	3.1%	6	1.2%	0	0.0%	17	3.3%	0	0.0%	0	0.0%	56	11%	168	32%	1	0.2%	0	0.0%	0	0.0%	0	0.0%	1	0.2%	2	0.4%	54	10%
Statewide Totals		519	198	38.2%	22	4.2%	17	3.3%	0	0.0%	0	0.0%	17	3.3%	0	0.0%	0	0.0%	224	43.2%	1	0.2%	0	0.0%	0	0.0%	3	0.6%	54	10%	0	0.0%	0	0.0%		

Central Region

SB94 Reason Detained by Judicial District

November 2016 New Admits



■ CENTRAL REGION, 212 New Admits

■ 1st JD, 58 New Admits

■ 5th JD, 4 New Admits

■ 2nd JD, 72 New Admits

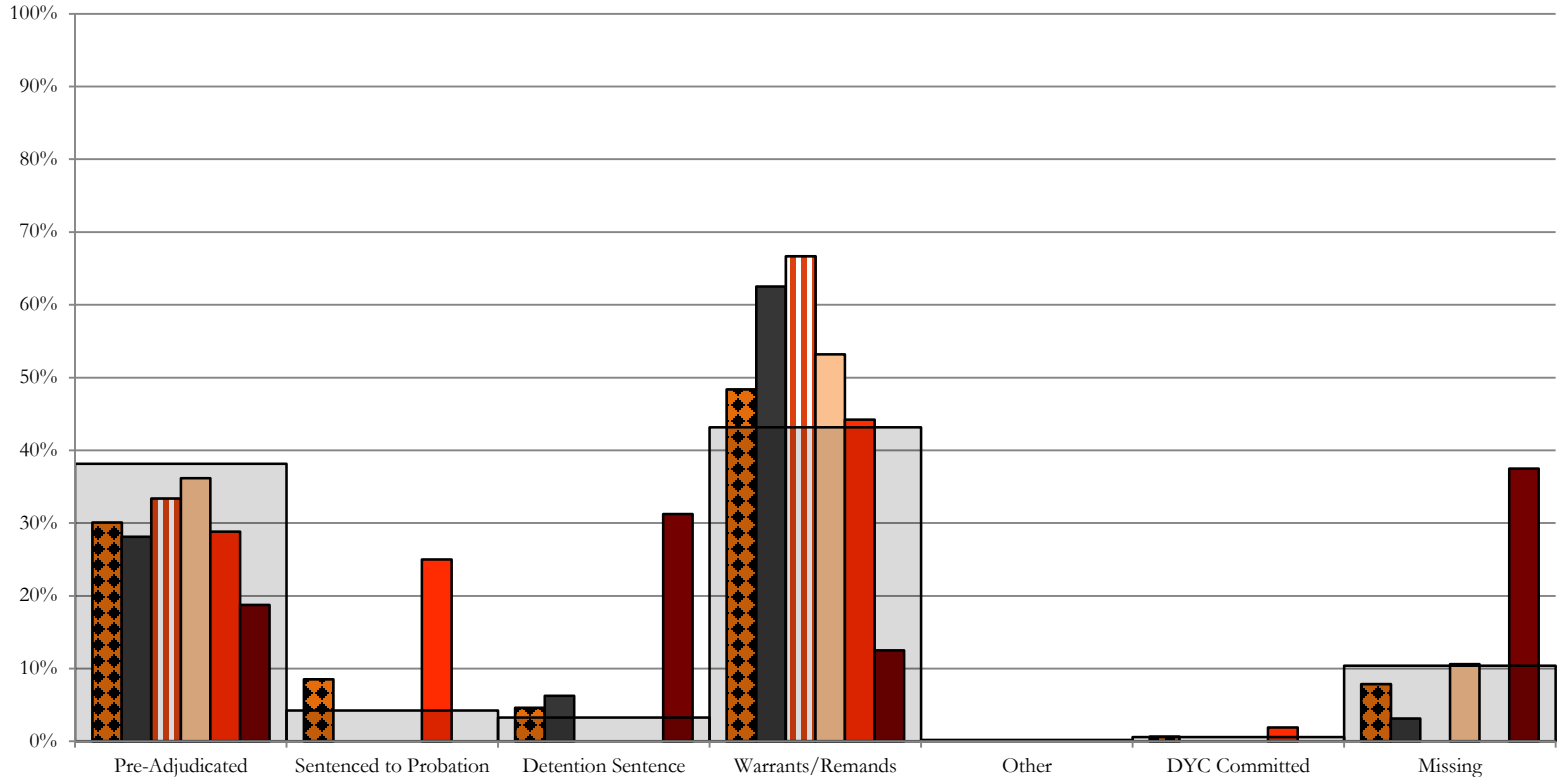
■ 18th JD, 78 New Admits

■ STATEWIDE, 519 New Admits

Northeast Region

SB94 Reason Detained by Judicial District

November 2016 New Admits

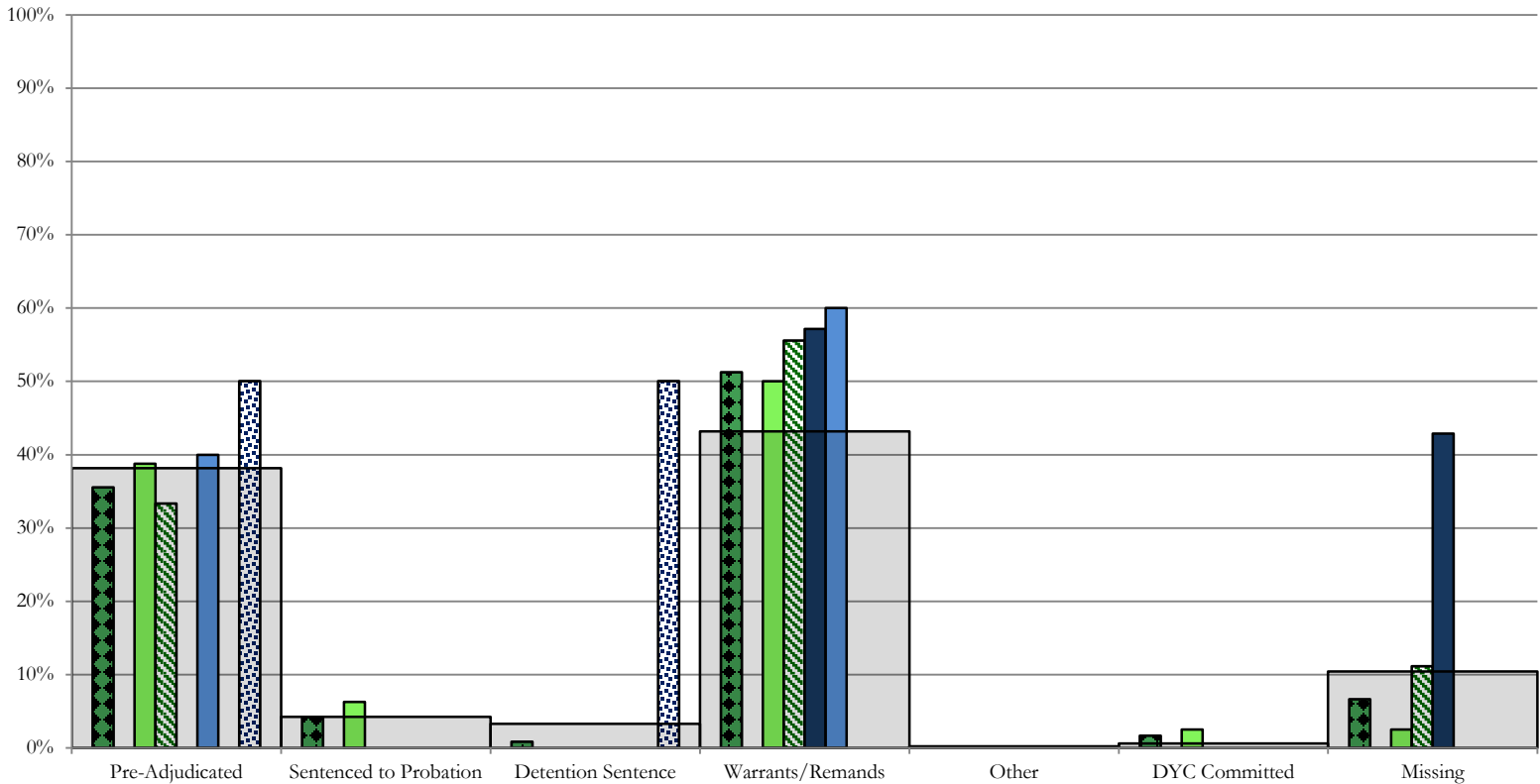


- NORTHEAST REGION, 153 New Admits
- 8th JD, 32 New Admits
- 13th JD, 6 New Admits
- 17th JD, 47 New Admits
- 19th JD, 52 New Admits
- 20th JD, 16 New Admits
- STATEWIDE, 519 New Admits

Southern Region

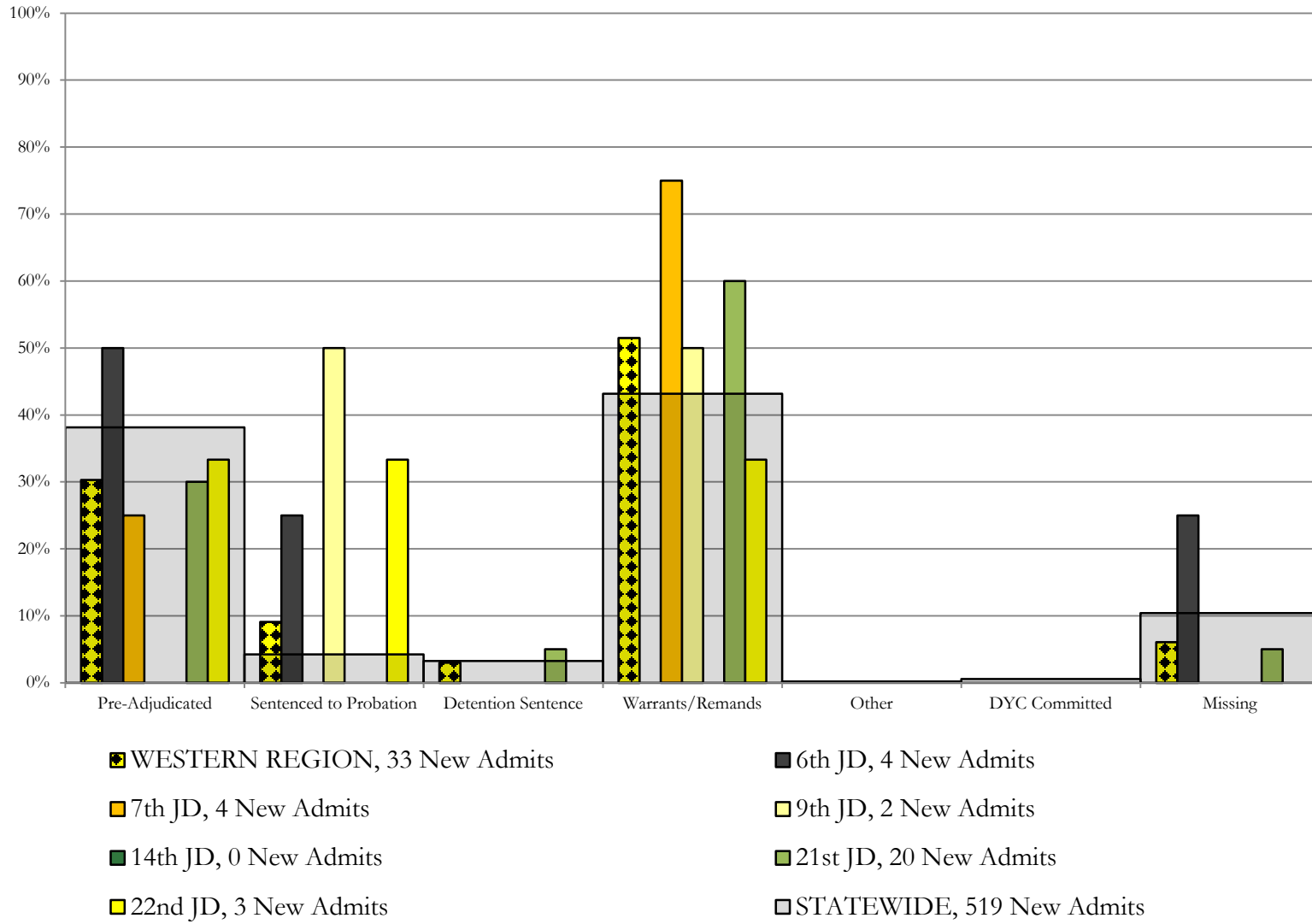
SB94 Reason Detained by Judicial District

November 2016 New Admits



- SOUTHERN REGION, 121 New Admits
- 4th JD, 80 New Admits
- 11th JD, 7 New Admits
- 15th JD, 0 New Admits
- STATEWIDE, 519 New Admits
- 3rd JD, 0 New Admits
- 10th JD, 27 New Admits
- 12th JD, 5 New Admits
- 16th JD, 2 New Admits

Western Region SB94 Reason Detained by Judicial District November 2016 New Admits



November 2016 SB94 Supplemental Report

DYC Detention Maximum Youth Served by Judicial District¹

Region	JD	Detention Capacity	Detention ADP		Maximum Youth Served on a Single Day ^{2,3}			
			November 2016	YTD	November 2016		YTD	
					Number of Youth	% of Detention Capacity	Number of Youth	% of Detention Capacity
<i>Central Region</i>								
	1st	37	23.0	21.1	29	78.4%	32	86.5%
	2nd	64	42.6	45.7	53	82.8%	60	93.8%
	5th	4	1.9	1.4	4	100.0%	4	100.0%
	18th	61	43.8	35.6	49	80.3%	49	80.3%
Central Region		166	111.2	103.8	125	75.3%	125	75.3%
<i>Northeast Region</i>								
	8th	21	10.8	11.3	14	66.7%	19	90.5%
	13th	5	3.7	2.5	4	80.0%	5	100.0%
	17th	30	21.7	21.6	28	93.3%	29	96.7%
	19th	25	24.6	22.7	31	124.0%	33	132.0%
	20th	13	8.8	6.9	12	92.3%	12	92.3%
Northeast Region		94	69.7	65.0	72	76.6%	77	81.9%
<i>Southern Region</i>								
	3rd	2	0.0	0.6	0	0.0%	2	100.0%
	4th	51	46.2	45.9	51	100.0%	51	100.0%
	10th	13	11.2	11.1	17	130.8%	17	130.8%
	11th	8	2.3	2.3	5	62.5%	6	75.0%
	12th	4	1.6	2.1	3	75.0%	4	100.0%
	15th	2	2.3	2.8	3	150.0%	6	300.0%
	16th	3	0.6	0.2	2	66.7%	2	66.7%
Southern Region		83	64.1	65.0	73	88.0%	77	92.8%
<i>Western Region</i>								
	6th	5	3.9	2.6	6	120.0%	6	120.0%
	7th	7	4.1	4.5	5	71.4%	9	128.6%
	9th	6	0.8	2.5	2	33.3%	5	83.3%
	14th	3	0.0	0.2	0	0.0%	2	66.7%
	21st	14	10.4	9.3	14	100.0%	15	107.1%
	22nd	4	1.6	0.8	3	75.0%	3	75.0%
Western Region		39	20.8	19.8	26	66.7%	30	76.9%
<i>Missing JD or Multiple JDs</i>			0.2	1.4				
Statewide		382	266.0	255.0	286	74.9%	286	74.9%

¹ Maximum youth served is the highest number of youth in detention on a single day during the month or fiscal year.

² Regional figures are not the sum of judicial districts, but represent the maximum count on one day for the entire region.

³ State figures are not the sum of regional figures, but represent the maximum count on one day for the entire state.

November 2016 SB94 Supplemental Report

SB94 Community ADP by Judicial District

Region	JD	Committed		Diversion		ICJ		Municipal		Pre-Adjudicated		Sentenced		VCO		Total	
		November	YTD	November	YTD	November	YTD	November	YTD	November	YTD	November	YTD	November	YTD	November	YTD
<i>Central Region</i>																	
	1st	1.0	0.3	0.0	0.0	0.0	0.0	12.2	12.3	260.8	254.7	20.3	14.9	0.0	0.0	294.2	282.2
	2nd	13.7	9.1	0.0	0.0	0.5	0.1	0.7	0.1	404.9	350.8	91.0	81.5	1.0	1.0	511.8	442.7
	5th	0.0	0.0	7.0	6.8	0.0	0.0	0.0	0.0	17.4	18.2	29.3	32.3	0.0	0.0	53.7	57.3
	18th	1.2	1.2	5.0	5.0	0.0	0.0	0.0	0.0	340.0	313.4	54.4	52.9	8.0	8.5	408.6	381.1
Central Total		16.0	10.6	12.0	11.8	0.5	0.1	12.9	12.5	1023.1	937.1	195.0	181.6	9.0	9.5	1268.4	1163.3
<i>Northeast Region</i>																	
	8th	0.0	0.0	4.0	3.5	0.0	0.0	0.0	0.0	53.7	50.8	43.6	44.2	0.0	0.0	101.2	98.5
	13th	1.0	0.3	0.0	0.0	0.0	0.0	0.0	0.1	12.4	11.1	11.9	9.8	4.6	3.5	29.9	24.8
	17th	3.0	3.8	0.0	0.0	0.0	0.0	1.0	1.0	225.8	197.1	52.3	48.4	0.0	0.0	282.2	250.4
	19th	0.1	0.3	0.0	0.0	0.0	0.0	0.0	0.0	87.5	67.8	56.9	46.7	1.0	1.1	145.5	115.9
	20th	1.0	1.2	44.1	26.9	0.0	0.0	0.0	0.0	76.4	59.3	66.8	60.4	5.0	5.0	193.3	152.7
Northeast Total		5.1	5.5	48.1	30.4	0.0	0.0	1.0	1.1	455.8	386.1	231.4	209.5	10.6	9.6	752.1	642.2
<i>Southern Region</i>																	
	3rd	0.0	0.0	0.0	0.0	0.0	0.0	0.0	0.0	12.0	11.6	5.0	5.4	1.0	1.0	18.0	18.0
	4th	4.0	3.3	0.0	0.0	0.0	0.0	95.0	90.8	296.8	266.8	166.3	150.9	2.0	2.0	564.2	513.8
	10th	0.0	0.0	0.0	0.0	0.0	0.0	89.2	82.7	24.8	24.6	20.3	21.7	10.6	7.3	144.9	136.3
	11th	0.0	0.0	0.0	0.0	0.0	0.0	1.0	0.7	22.8	19.1	39.5	37.0	2.0	2.1	65.4	58.8
	12th	0.0	0.0	0.0	0.0	0.0	0.0	2.9	1.7	10.0	6.2	2.5	1.5	0.0	0.0	15.5	9.4
	15th	0.0	0.0	0.0	0.0	0.0	0.0	0.0	0.0	6.0	5.1	22.9	15.3	0.0	0.0	28.9	20.5
	16th	0.0	0.0	0.0	0.0	0.0	0.0	0.0	0.0	5.7	3.6	16.0	16.3	21.8	20.8	43.5	40.7
Southern Total		4.0	3.3	0.0	0.0	0.0	0.0	188.1	176.0	378.2	336.9	272.6	248.1	37.4	33.2	880.3	797.4
<i>Western Region</i>																	
	6th	0.0	0.0	1.0	1.0	0.0	0.0	0.0	0.0	13.2	13.6	2.0	2.1	0.0	0.0	16.2	16.7
	7th	0.0	0.2	6.0	5.6	0.0	0.0	1.0	0.6	14.0	13.3	20.7	18.2	0.0	0.0	41.7	37.9
	9th	0.0	0.0	0.0	0.0	0.0	0.0	0.0	0.0	5.7	6.2	5.5	9.9	0.0	0.0	11.2	16.1
	14th	0.0	0.0	10.4	12.7	0.0	0.0	0.0	0.0	1.9	1.6	2.5	1.3	0.0	0.0	14.8	15.7
	21st	0.0	0.0	0.0	0.4	0.0	0.0	2.0	2.0	35.0	32.0	12.8	12.4	0.0	0.0	49.8	46.8
	22nd	0.0	0.0	0.0	0.0	0.0	0.0	0.0	0.0	6.1	7.4	3.5	3.6	0.0	0.0	9.7	11.0
Western Total		0.0	0.2	17.4	19.7	0.0	0.0	3.0	2.6	75.9	74.1	47.0	47.6	0.0	0.0	143.4	144.2
Statewide Total		25.1	19.7	77.5	61.8	0.5	0.1	205.0	192.1	1933.0	1734.2	746.0	686.8	57.0	52.3	3044.2	2747.1