

October 2016
FY 2016-2017
SB94 JDSAG SUPPLEMENTAL REPORT

Prepared by the Division of Youth Corrections (DYC)
Research and Evaluation Unit
November 28th, 2016



COLORADO

**Office of Children,
Youth & Families**

Division of Youth Corrections

October 2016 SB94 Supplemental Report

DYC Commitment ADP & New Commitments by Judicial District

Region	JD ¹	2017 Population Estimates ²	ADP ³		New Commitments		
			October 2016	YTD	October 2016	YTD	YTD Rate ⁴
<i>Central Region</i>							
	1st	56,020	74.5	73.6	4	14	2.5
	2nd	62,634	113.7	121.1	6	14	2.2
	5th	10,162	8.9	8.7	2	2	2.0
	18th	121,363	63.6	66.7	1	12	1.0
Central Total		250,179	260.7	270.1	13	42	1.7
<i>Northeast Region</i>							
	8th	32,983	43.8	43.5	5	15	4.5
	13th	8,520	6.0	6.4	0	1	1.2
	17th	71,425	73.6	73.0	3	13	1.8
	19th	36,924	48.4	50.0	2	12	3.2
	20th	32,693	7.3	9.1	2	4	1.2
Northeast Total		182,545	179.2	182.0	12	45	2.5
<i>Southern Region</i>							
	3rd	1,871	1.0	1.1	0	1	5.3
	4th	81,725	75.0	79.9	3	11	1.3
	10th	17,869	40.2	42.1	0	6	3.4
	11th	7,196	4.0	4.0	0	0	0.0
	12th	5,241	9.5	9.2	0	1	1.9
	15th	2,102	1.0	0.3	0	1	4.8
	16th	2,749	-	-	0	0	0.0
Southern Total		118,753	130.8	136.6	3	20	1.7
<i>Western Region</i>							
	6th	6,491	5.9	6.7	1	2	3.1
	7th	10,788	8.6	9.0	0	2	1.9
	9th	9,477	4.2	3.3	1	2	2.1
	14th	5,635	3.0	3.0	0	0	0.0
	21st	15,968	34.6	36.6	2	9	5.6
	22nd	3,108	3.0	2.6	0	0	0.0
Western Total		51,467	59.3	61.1	4	15	2.9
Statewide Total		602,944	630.0	649.8	32	122	2.0

¹ JD represents the judicial district in which the client was committed. Regional totals are a sum of their respective judicial districts. Regional totals reported here may differ slightly from those reported in the Monthly Population Report, where region is defined by active caseloads.

² Source: DOLA 2017 Estimates

³ Due to rounding, totals shown may not be an exact sum of the subtotals.

⁴ Per 10,000 youth in the population

October 2016 SB94 Supplemental Report

DYC Detention ADP and New Detention Admissions by Judicial District

Region	JD	2017 Population Estimates ¹	ADP		New Admits		YTD New Admit Rate ²
			October 2016	YTD	October 2016	YTD	
<i>Central Region</i>							
	1st	56,020	23.7	20.7	61	232	41.4
	2nd	62,634	47.8	46.5	100	327	52.2
	5th	10,162	1.1	1.3	3	9	8.9
	18th	121,363	32.7	33.6	89	328	27.0
Central Total		250,179	105.3	102.0	253	896	35.8
<i>Northeast Region</i>							
	8th	32,983	10.8	11.4	27	100	30.3
	13th	8,520	2.4	2.2	9	23	27.0
	17th	71,425	22.2	21.6	39	168	23.5
	19th	36,924	27.1	22.3	49	195	52.8
	20th	32,693	8.2	6.4	21	78	23.9
Northeast Total		182,545	70.8	63.9	145	564	30.9
<i>Southern Region</i>							
	3rd	1,871	0.9	0.8	1	6	32.1
	4th	81,725	46.3	46.3	77	273	33.4
	10th	17,869	10.5	11.1	16	86	48.1
	11th	7,196	3.8	2.3	15	42	58.4
	12th	5,241	1.5	2.2	4	11	21.0
	15th	2,102	2.3	2.9	2	12	57.1
	16th	2,749	0.1	0.1	1	4	14.6
Southern Total		118,753	65.1	65.7	116	434	36.5
<i>Western Region</i>							
	6th	6,491	4.1	2.3	6	22	33.9
	7th	10,788	4.2	4.5	4	28	26.0
	9th	9,477	2.4	3.0	2	16	16.9
	14th	5,635	0.7	0.2	2	4	7.1
	21st	15,968	10.5	9.0	17	78	48.8
	22nd	3,108	0.1	0.2	1	3	9.7
Western Total		51,467	22.0	19.2	32	151	29.3
<i>Missing JD or Multiple JDs</i>			<i>1.5</i>	<i>1.7</i>			
Statewide Total		602,944	264.7	252.4	546	2,045	33.9

¹ Source: DOLA 2017 Estimates

² Per 10,000 youth in the population

October 2016 SB94 Supplemental Report

DYC Detention LOS by Judicial District

Region	JD	YTD Detention Releases	YTD LOS (days)	LOS (days) Compared to State AVG
<i>Central Region</i>				
	1st	222	11.3	-3.3
	2nd	332	16.9	2.3
	5th	8	11.7	-2.9
	18th	325	11.0	-3.6
Central Total		887	13.3	-1.3
<i>Northeast Region</i>				
	8th	102	15.3	0.7
	13th	24	11.5	-3.1
	17th	168	12.8	-1.8
	19th	184	13.3	-1.3
	20th	72	9.3	-5.3
Northeast Total		550	12.9	-1.7
<i>Southern Region</i>				
	3rd	7	16.3	1.6
	4th	266	18.9	4.3
	10th	89	14.2	-0.4
	11th	38	5.6	-9.0
	12th	11	24.5	9.9
	15th	12	30.3	15.7
	16th	4	3.8	-10.8
Southern Total		427	17.0	2.4
<i>Western Region</i>				
	6th	21	8.6	-6.0
	7th	25	17.8	3.2
	9th	15	19.1	4.5
	14th	4	5.8	-8.8
	21st	77	13.7	-1.0
	22nd	4	5.0	-9.6
Western Total		146	13.7	-0.9
Statewide Total		2,011	14.6	-

**October 2016
SB94 JDSAG Supplemental Report**

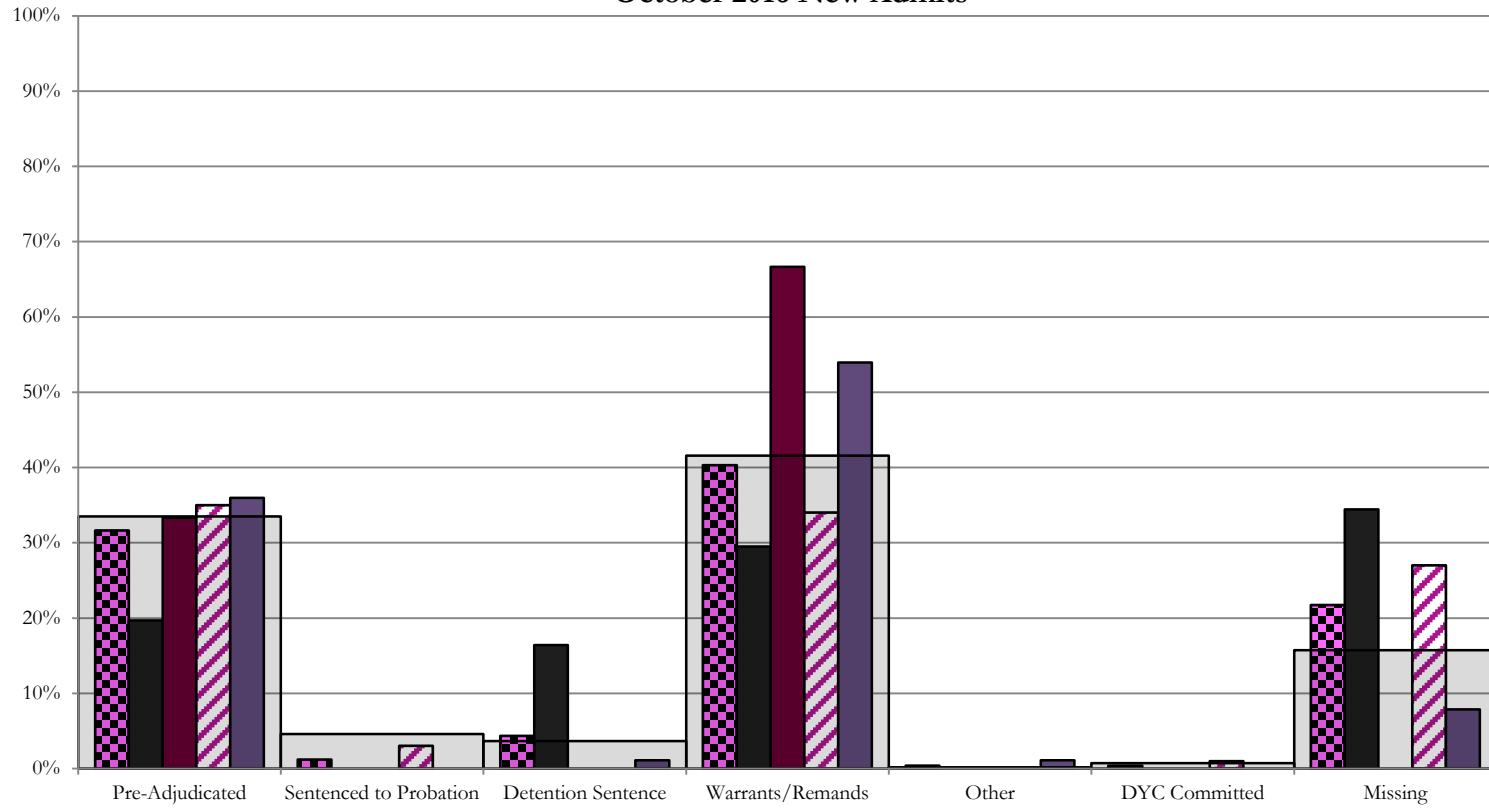
SB94 Reason Detained (RD) by Judicial District

Region	JD	Monthly New Admits	Pre-Adjudicated				Sentenced to Probation				Detention Sentence								Warrants/Remands				Other						DYC Committed		Missing					
			Felony		Misdemeanor		Technical Violator		New Charges		Probation Sentence		Detention Sentence		Valid Court Order (VCO) Truancy		Awaiting DSS (Social Services) Placement		Failure to Appear (FTA)		Failure to Comply (FTC)		Interstate Compact on Juveniles (ICJ) Hold		Immigration Hold		No Bond Hold		Out-of-Country Warrant		Institutional		Parole		Missing	
			#	%	#	%	#	%	#	%	#	%	#	%	#	%	#	%	#	%	#	%	#	%	#	%	#	%	#	%	#	%	#	%	#	%
Central Region																																				
	1st	61	6	9.8%	6	9.8%	0	0.0%	0	0.0%	0	0.0%	10	16.4%	0	0.0%	0	0.0%	4	6.6%	14	23.0%	0	0.0%	0	0.0%	0	0.0%	0	0.0%	0	0.0%	0	0.0%	21	34.4%
	2nd	100	29	29.0%	6	6.0%	3	3.0%	0	0.0%	0	0.0%	0	0.0%	0	0.0%	0	0.0%	11	11.0%	23	23.0%	0	0.0%	0	0.0%	0	0.0%	0	0.0%	1	1.0%	0	0.0%	27	27.0%
	5th	3	1	33.3%	0	0.0%	0	0.0%	0	0.0%	0	0.0%	0	0.0%	0	0.0%	0	0.0%	1	33.3%	1	33.3%	0	0.0%	0	0.0%	0	0.0%	0	0.0%	0	0.0%	0	0.0%	0	0.0%
	18th	89	10	11.2%	22	24.7%	0	0.0%	0	0.0%	0	0.0%	1	1.1%	0	0.0%	0	0.0%	18	20.2%	30	33.7%	1	1.1%	0	0.0%	0	0.0%	0	0.0%	0	0.0%	0	0.0%	7	7.9%
Central Total		253	46	18%	34	13%	3	1.2%	0	0.0%	0	0.0%	11	4.3%	0	0.0%	0	0.0%	34	13%	68	27%	1	0.4%	0	0.0%	0	0.0%	0	0.0%	1	0.4%	0	0.0%	55	21.7%
Northeast Region																																				
	8th	27	2	7.4%	2	7.4%	0	0.0%	0	0.0%	0	0.0%	1	3.7%	0	0.0%	0	0.0%	3	11.1%	18	66.7%	0	0.0%	0	0.0%	0	0.0%	0	0.0%	0	0.0%	0	0.0%	1	3.7%
	13th	9	1	11.1%	3	33.3%	0	0.0%	0	0.0%	0	0.0%	0	0.0%	0	0.0%	0	0.0%	1	11.1%	2	22.2%	0	0.0%	0	0.0%	0	0.0%	0	0.0%	0	0.0%	0	0.0%	2	22.2%
	17th	39	17	43.6%	2	5.1%	1	2.6%	0	0.0%	0	0.0%	0	0.0%	0	0.0%	0	0.0%	3	7.7%	12	30.8%	0	0.0%	0	0.0%	0	0.0%	0	0.0%	0	0.0%	4	10.3%		
	19th	49	10	20.4%	9	18.4%	11	22.4%	0	0.0%	0	0.0%	3	6.1%	0	0.0%	0	0.0%	3	6.1%	13	26.5%	0	0.0%	0	0.0%	0	0.0%	0	0.0%	0	0.0%	0	0.0%	0	0.0%
	20th	21	5	23.8%	1	4.8%	1	4.8%	0	0.0%	0	0.0%	1	4.8%	0	0.0%	0	0.0%	0	0.0%	5	23.8%	0	0.0%	0	0.0%	0	0.0%	0	0.0%	0	0.0%	8	38.1%		
Northeast Total		145	35	24%	17	12%	13	9.0%	0	0.0%	0	0.0%	5	3.4%	0	0.0%	0	0.0%	10	6.9%	50	34%	0	0.0%	0	0.0%	0	0.0%	0	0.0%	0	0.0%	0	0.0%	15	10%
Southern Region																																				
	3rd	1	0	0.0%	0	0%	0	0.0%	0	0.0%	0	0.0%	0	0.0%	0	0.0%	0	0.0%	0	0.0%	0	0.0%	0	0.0%	0	0.0%	0	0.0%	0	0.0%	0	0.0%	1	100.0%		
	4th	77	21	27.3%	6	7.8%	0	0.0%	7	9.1%	0	0.0%	1	1.3%	1	1.3%	0	0.0%	6	7.8%	27	35.1%	0	0.0%	0	0.0%	0	0.0%	3	3.9%	0	0.0%	5	6.5%		
	10th	16	1	6.3%	4	25.0%	0	0.0%	1	6.3%	0	0.0%	0	0.0%	0	0.0%	0	0.0%	7	43.8%	3	18.8%	0	0.0%	0	0.0%	0	0.0%	0	0.0%	0	0.0%	0	0.0%	0	0.0%
	11th	15	1	6.7%	0	0.0%	0	0.0%	0	0.0%	0	0.0%	0	0.0%	1	6.7%	4	26.7%	3	20.0%	0	0.0%	0	0.0%	0	0.0%	0	0.0%	0	0.0%	0	0.0%	6	40.0%		
	12th	4	3	75.0%	0	0.0%	0	0.0%	0	0.0%	0	0.0%	0	0.0%	0	0.0%	0	0.0%	0	0.0%	0	0.0%	0	0.0%	0	0.0%	0	0.0%	0	0.0%	1	25.0%				
	15th	2	0	0.0%	0	0.0%	0	0.0%	0	0.0%	0	0.0%	1	50.0%	0	0.0%	0	0.0%	0	0.0%	0	0.0%	0	0.0%	0	0.0%	0	0.0%	0	0.0%	1	50.0%				
	16th	1	0	0.0%	0	0.0%	0	0.0%	0	0.0%	0	0.0%	0	0.0%	0	0.0%	0	0.0%	0	0.0%	0	0.0%	0	0.0%	0	0.0%	0	0.0%	0	0.0%	1	100.0%				
Southern Total		116	26	22%	10	9%	0	0.0%	8	6.9%	0	0.0%	2	1.7%	1	0.9%	1	0.9%	17	15%	33	28%	0	0.0%	0	0.0%	0	0.0%	0	0.0%	3	2.6%	0	0.0%	15	13%
Western Region																																				
	6th	6	3	50.0%	2	33.3%	0	0.0%	0	0.0%	0	0.0%	0	0.0%	0	0.0%	0	0.0%	1	16.7%	0	0.0%	0	0.0%	0	0.0%	0	0.0%	0	0.0%	0	0.0%	0	0.0%		
	7th	4	0	0.0%	1	25.0%	0	0.0%	0	0.0%	0	0.0%	0	0.0%	0	0.0%	0	0.0%	3	75.0%	0	0.0%	0	0.0%	0	0.0%	0	0.0%	0	0.0%	0	0.0%	0	0.0%	0	0.0%
	9th	2	0	0.0%	0	0.0%	1	50.0%	0	0.0%	0	0.0%	0	0.0%	0	0.0%	0	0.0%	0	0.0%	0	0.0%	0	0.0%	0	0.0%	0	0.0%	0	0.0%	1	50.0%	0	0.0%		
	14th	2	1	50.0%	0	0.0%	0	0.0%	0	0.0%	0	0.0%	0	0.0%	0	0.0%	0	0.0%	1	50.0%	0	0.0%	0	0.0%	0	0.0%	0	0.0%	0	0.0%	0	0.0%	0	0.0%		
	21st	17	7	41.2%	1	5.9%	0	0.0%	0	0.0%	0	0.0%	0	0.0%	0	0.0%	1	5.9%	8	47.1%	0	0.0%	0	0.0%	0	0.0%	0	0.0%	0	0.0%	0	0.0%	0	0.0%		
	22nd	1	0	0.0%	0	0.0%	0	0.0%	0	0.0%	0	0.0%	0	0.0%	0	0.0%	0	0.0%	1	100.0%	0	0.0%	0	0.0%	0	0.0%	0	0.0%	0	0.0%	0	0.0%	0	0.0%		
Western Total		32	11	34%	4	12.5%	1	3.1%	0	0.0%	0	0.0%	0	0.0%	0	0.0%	0	0.0%	1	3.1%	14	44%	0	0.0%	0	0.0%	0	0.0%	0	0.0%	0	0.0%	1	3%		
Individual RD Totals		546	118	22%	65	12%	17	3.1%	8	1.5%	0	0.0%	18	3.3%	1	0.2%	1	0.2%	62	11%	165	30%	1	0.2%	0	0.0%	0	0.0%	0	0.0%	4	0.7%	0	0.0%	86	16%
Statewide Totals		546	183	33.5%	25	4.6%	20	3.7%	227	41.6%	1	0.2%	1	0.2%	62	11%	165	30%	1	0.2%	0	0.0%	0	0.0%	0	0.0%	4	0.7%	0	0.0%	86	16%				

Central Region

SB94 Reason Detained by Judicial District

October 2016 New Admits



■ CENTRAL REGION, 253 New Admits

■ 5th JD, 3 New Admits

■ 18th JD, 89 New Admits

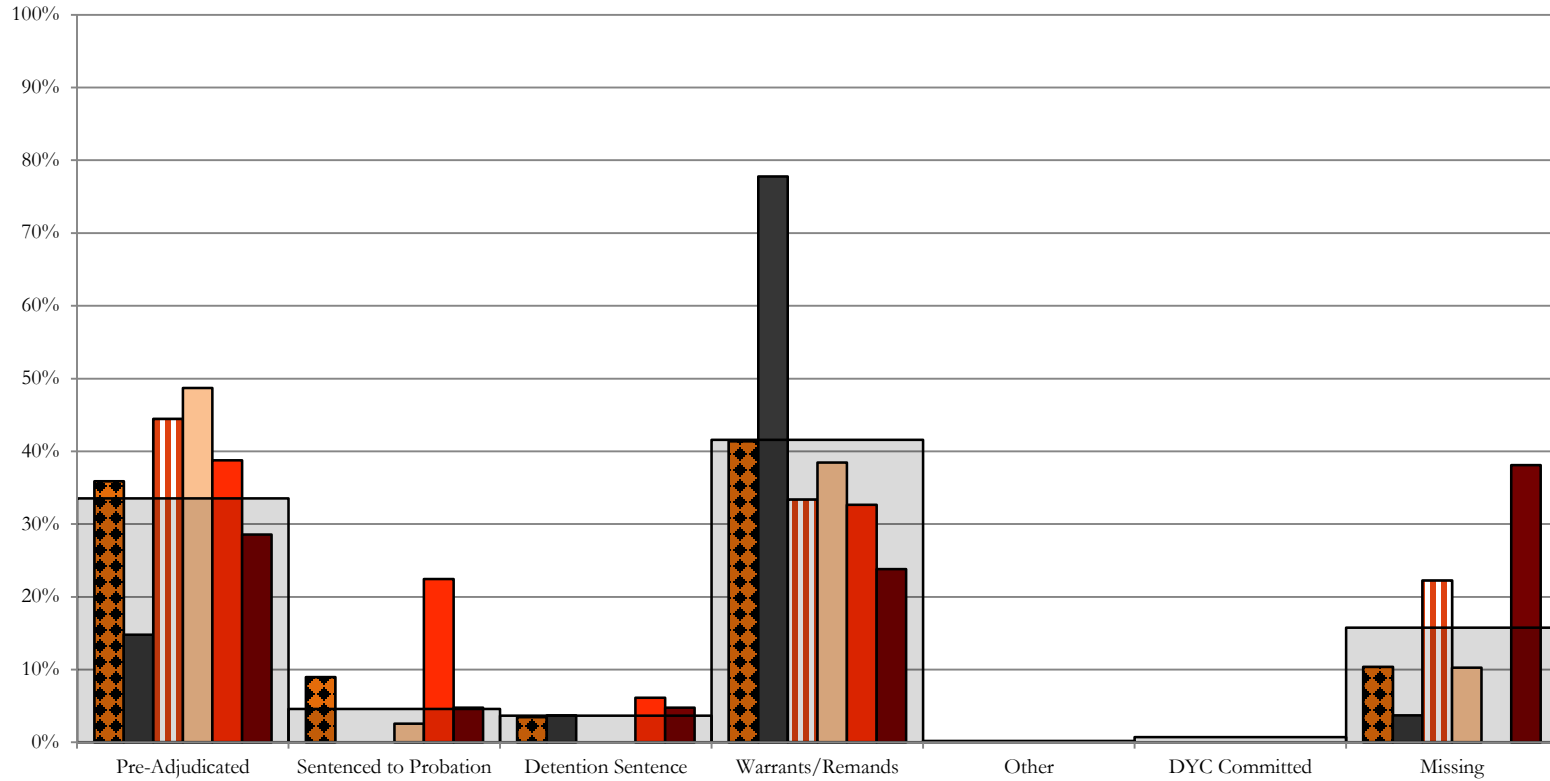
■ 1st JD, 61 New Admits

■ 2nd JD, 100 New Admits

■ STATEWIDE, 546 New Admits

Northeast Region

SB94 Reason Detained by Judicial District October 2016 New Admits



■ NORTHEAST REGION, 145 New Admits

■ 8th JD, 27 New Admits

■ 13th JD, 9 New Admits

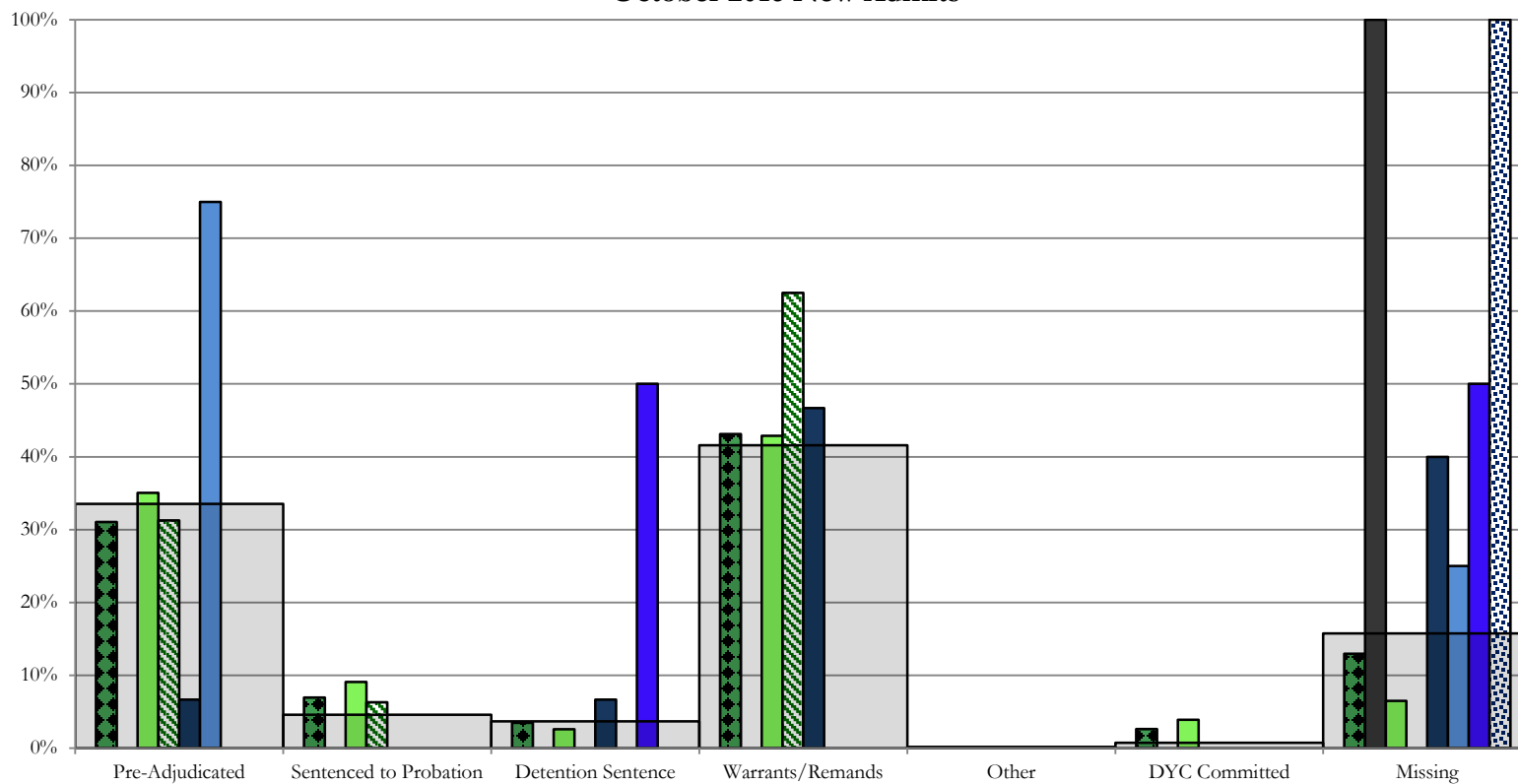
■ 17th JD, 39 New Admits

■ 19th JD, 49 New Admits

■ 20th JD, 21 New Admits

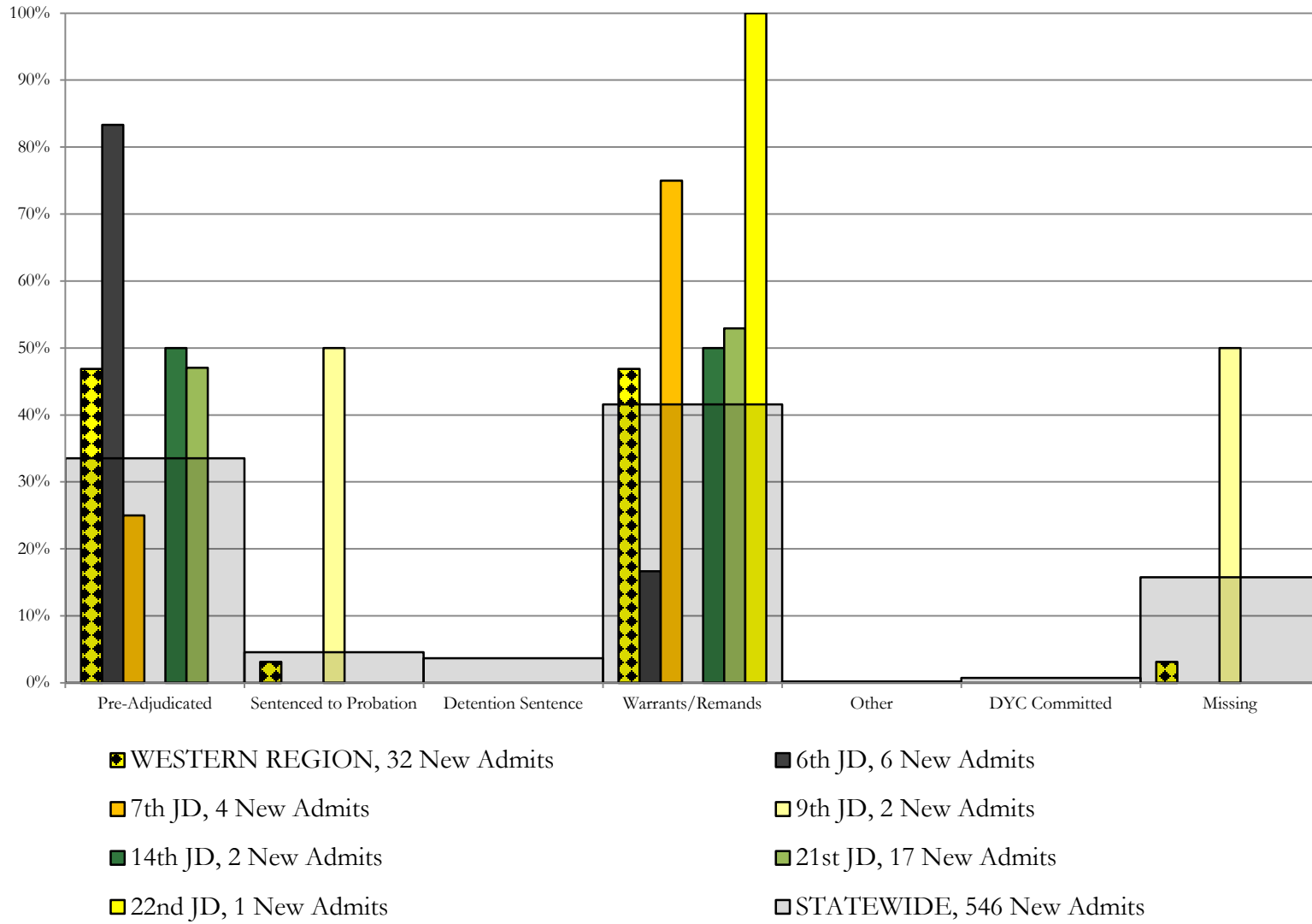
■ STATEWIDE, 546 New Admits

Southern Region SB94 Reason Detained by Judicial District October 2016 New Admits



- SOUTHERN REGION, 116 New Admits
- 4th JD, 77 New Admits
- 11th JD, 15 New Admits
- 15th JD, 2 New Admits
- STATEWIDE, 546 New Admits
- 3rd JD, 1 New Admits
- 10th JD, 16 New Admits
- 12th JD, 4 New Admits
- 16th JD, 1 New Admits

Western Region SB94 Reason Detained by Judicial District October 2016 New Admits



October 2016 SB94 Supplemental Report

DYC Detention Maximum Youth Served by Judicial District¹

Region	JD	Detention Capacity	Detention ADP		Maximum Youth Served on a Single Day ^{2,3}			
			October 2016	YTD	October 2016		YTD	
					Number of Youth	% of Detention Capacity	Number of Youth	% of Detention Capacity
<i>Central Region</i>								
	1st	37	23.7	20.7	33	89.2%	33	89.2%
	2nd	64	47.8	46.5	60	93.8%	60	93.8%
	5th	4	1.1	1.3	2	50.0%	2	50.0%
	18th	61	32.7	33.6	45	73.8%	45	73.8%
Central Region		166	105.3	102.0	119	71.7%	120	72.3%
<i>Northeast Region</i>								
	8th	21	10.8	11.4	14	66.7%	19	90.5%
	13th	5	2.4	2.2	5	100.0%	5	100.0%
	17th	30	22.2	21.6	29	96.7%	29	96.7%
	19th	25	27.1	22.3	32	128.0%	32	128.0%
	20th	13	8.2	6.4	11	84.6%	12	92.3%
Northeast Region		94	70.8	63.9	78	83.0%	78	83.0%
<i>Southern Region</i>								
	3rd	2	0.9	0.8	1	50.0%	2	100.0%
	4th	51	46.3	46.3	50	98.0%	51	100.0%
	10th	13	10.5	11.1	14	107.7%	17	130.8%
	11th	8	3.8	2.3	6	75.0%	6	75.0%
	12th	4	1.5	2.2	3	75.0%	4	100.0%
	15th	2	2.3	2.9	3	150.0%	6	300.0%
	16th	3	0.1	0.1	1	33.3%	1	33.3%
Southern Region		83	65.1	65.7	71	85.5%	77	92.8%
<i>Western Region</i>								
	6th	5	4.1	2.3	6	120.0%	6	120.0%
	7th	7	4.2	4.5	5	71.4%	9	128.6%
	9th	6	2.4	3.0	4	66.7%	5	83.3%
	14th	3	0.7	0.2	2	66.7%	2	66.7%
	21st	14	10.5	9.0	13	92.9%	15	107.1%
	22nd	4	0.1	0.2	2	50.0%	2	50.0%
Western Region		39	22.0	19.2	29	74.4%	29	74.4%
<i>Missing JD or Multiple JDs</i>			1.5	1.7				
Statewide		382	264.7	252.4	279	73.0%	279	73.0%

¹ Maximum youth served is the highest number of youth in detention on a single day during the month or fiscal year.

² Regional figures are not the sum of judicial districts, but represent the maximum count on one day for the entire region.

³ State figures are not the sum of regional figures, but represent the maximum count on one day for the entire state.

October 2016 SB94 Supplemental Report

SB94 Community ADP by Judicial District

Region	JD	Committed		Diversion		ICJ		Municipal		Pre-Adjudicated		Sentenced		VCO		Total	
		October	YTD	October	YTD	October	YTD	October	YTD	October	YTD	October	YTD	October	YTD	October	YTD
<i>Central Region</i>																	
	1st	0.7	0.2	0.0	0.0	0.0	0.0	13.0	13.0	305.5	307.8	25.1	21.2	0.0	0.0	344.3	342.1
	2nd	10.2	8.0	0.0	0.0	0.0	0.0	0.0	0.0	374.6	336.1	86.5	79.2	1.0	1.0	472.3	424.3
	5th	0.0	0.0	18.0	18.0	0.0	0.0	0.0	0.0	18.0	19.2	32.3	33.1	0.0	0.0	68.3	70.3
	18th	1.2	1.2	5.0	5.0	0.0	0.0	0.0	0.0	318.2	307.9	51.3	52.2	8.0	8.7	383.7	375.0
Central Total		12.1	9.3	23.0	23.0	0.0	0.0	13.0	13.0	1016.3	971.0	195.2	185.6	9.0	9.7	1268.6	1211.7
<i>Northeast Region</i>																	
	8th	0.0	0.0	4.0	3.4	0.0	0.0	0.0	0.0	49.2	50.9	35.7	42.4	0.0	0.0	89.0	96.7
	13th	0.4	0.1	0.0	0.0	0.0	0.0	0.0	0.1	11.6	10.8	10.2	9.3	4.3	3.3	26.5	23.6
	17th	4.0	4.0	0.0	0.0	0.0	0.0	1.0	1.0	216.1	194.6	50.0	47.5	0.0	0.0	271.2	247.2
	19th	0.0	0.3	0.0	0.0	0.0	0.0	0.0	0.0	76.2	63.0	44.9	44.0	1.0	1.1	122.1	108.4
	20th	2.0	2.0	35.1	24.6	0.0	0.0	0.0	0.0	80.4	61.8	68.9	63.6	4.0	4.0	190.3	155.9
Northeast Total		6.4	6.4	39.1	27.9	0.0	0.0	1.0	1.1	433.5	381.2	209.7	206.7	9.3	8.4	699.0	631.8
<i>Southern Region</i>																	
	3rd	0.0	0.0	0.0	0.0	0.0	0.0	0.0	0.0	12.0	11.4	5.0	5.5	1.0	1.0	18.0	18.0
	4th	3.2	3.1	0.0	0.0	0.0	0.0	94.1	90.1	292.9	265.3	161.2	148.1	2.0	2.0	553.4	508.5
	10th	0.0	0.0	0.0	0.0	0.0	0.0	90.0	83.1	21.5	23.9	22.2	22.2	8.4	6.6	142.0	135.8
	11th	0.0	0.0	0.0	0.0	0.0	0.0	0.0	0.0	20.0	17.3	38.3	36.8	2.0	2.2	60.3	56.2
	12th	0.0	0.0	0.0	0.0	0.0	0.0	2.4	1.4	6.6	6.0	2.0	1.6	0.0	0.0	11.0	9.0
	15th	0.0	0.0	0.0	0.0	0.0	0.0	0.0	0.0	5.3	4.9	17.2	13.5	0.0	0.0	22.6	18.4
	16th	0.0	0.0	0.0	0.0	0.0	0.0	0.0	0.0	4.8	3.1	16.0	16.4	20.3	20.5	41.2	40.0
Southern Total		3.2	3.1	0.0	0.0	0.0	0.0	186.5	174.6	363.0	331.9	262.0	244.1	33.7	32.2	848.4	785.9
<i>Western Region</i>																	
	6th	0.0	0.0	1.0	1.0	0.0	0.0	0.0	0.0	15.1	13.8	2.0	2.2	0.0	0.0	18.1	17.0
	7th	0.0	0.3	5.9	5.5	0.0	0.0	1.0	0.5	12.9	13.1	19.2	17.6	0.0	0.0	39.0	36.9
	9th	0.0	0.0	0.0	0.0	0.0	0.0	0.0	0.0	5.0	6.3	10.5	11.0	0.0	0.0	15.5	17.3
	14th	0.0	0.0	13.0	15.1	0.0	0.0	0.0	0.0	1.8	2.0	1.6	1.0	0.0	0.0	16.5	18.1
	21st	0.0	0.0	0.0	0.5	0.0	0.0	2.0	2.0	33.6	31.2	13.1	12.3	0.0	0.0	48.7	46.0
	22nd	0.0	0.0	0.0	0.0	0.0	0.0	0.0	0.0	8.6	7.4	4.0	4.0	0.0	0.0	12.6	11.4
Western Total		0.0	0.3	19.9	22.1	0.0	0.0	3.0	2.5	77.0	73.8	50.4	48.1	0.0	0.0	150.3	146.7
Statewide Total		21.8	19.1	82.0	73.0	0.0	0.0	203.5	191.2	1889.9	1757.9	717.3	684.4	52.0	50.3	2966.4	2776.0