

September 2016
FY 2016-2017
SB94 JDSAG SUPPLEMENTAL REPORT

Prepared by the Division of Youth Corrections (DYC)
Research and Evaluation Unit
November 1st, 2016



COLORADO

**Office of Children,
Youth & Families**

Division of Youth Corrections

September 2016 SB94 Supplemental Report

DYC Commitment ADP & New Commitments by Judicial District

Region	JD ¹	2017 Population Estimates ²	ADP ³		New Commitments		
			September 2016	YTD	September 2016	YTD	YTD Rate ⁴
<i>Central Region</i>							
	1st	56,020	71.7	73.3	5	10	1.8
	2nd	62,634	117.5	123.6	2	8	1.3
	5th	10,162	8.0	8.7	0	0	0.0
	18th	121,363	67.7	67.7	1	11	0.9
Central Total		250,179	264.9	273.3	8	29	1.2
<i>Northeast Region</i>							
	8th	32,983	44.3	43.2	3	10	3.0
	13th	8,520	6.0	6.6	0	1	1.2
	17th	71,425	75.5	72.8	2	10	1.4
	19th	36,924	48.0	50.5	1	9	2.4
	20th	32,693	9.5	9.6	0	2	0.6
Northeast Total		182,545	183.3	182.7	6	32	1.8
<i>Southern Region</i>							
	3rd	1,871	1.0	1.2	0	1	5.3
	4th	81,725	77.3	81.6	1	8	1.0
	10th	17,869	42.9	42.1	3	6	3.4
	11th	7,196	4.0	4.0	0	0	0.0
	12th	5,241	9.3	9.0	1	1	1.9
	15th	2,102	0.1	0.0	1	1	4.8
	16th	2,749	-	-	0	0	0.0
Southern Total		118,753	134.8	138.0	6	17	1.4
<i>Western Region</i>							
	6th	6,491	7.0	6.9	0	1	1.5
	7th	10,788	8.4	8.1	0	1	0.9
	9th	9,477	3.1	3.0	1	1	1.1
	14th	5,635	3.0	3.0	0	0	0.0
	21st	15,968	37.2	37.3	1	7	4.4
	22nd	3,108	3.0	2.4	0	0	0.0
Western Total		51,467	61.6	60.8	2	10	1.9
Statewide Total		602,944	644.6	654.7	22	88	1.5

¹ JD represents the judicial district in which the client was committed. Regional totals are a sum of their respective judicial districts. Regional totals reported here may differ slightly from those reported in the Monthly Population Report, where region is defined by active caseloads.

² Source: DOLA 2017 Estimates

³ Due to rounding, totals shown may not be an exact sum of the subtotals.

⁴ Per 10,000 youth in the population

September 2016 SB94 Supplemental Report

DYC Detention ADP and New Detention Admissions by Judicial District

Region	JD	2017 Population Estimates ¹	ADP		New Admits		
			September 2016	YTD	September 2016	YTD	YTD New Admit Rate ²
<i>Central Region</i>							
	1st	56,020	18.9	19.7	57	172	30.7
	2nd	62,634	44.4	47.0	78	227	36.2
	5th	10,162	1.6	1.3	2	6	5.9
	18th	121,363	35.3	34.9	76	239	19.7
Central Total		250,179	100.2	102.9	213	644	25.7
<i>Northeast Region</i>							
	8th	32,983	10.9	11.9	23	74	22.4
	13th	8,520	1.8	2.1	5	14	16.4
	17th	71,425	23.2	21.4	34	129	18.1
	19th	36,924	22.5	20.6	58	146	39.5
	20th	32,693	7.2	5.9	19	57	17.4
Northeast Total		182,545	65.5	61.9	139	420	23.0
<i>Southern Region</i>							
	3rd	1,871	1.2	0.7	1	5	26.7
	4th	81,725	45.2	46.3	59	196	24.0
	10th	17,869	12.6	11.3	23	70	39.2
	11th	7,196	3.1	1.8	8	27	37.5
	12th	5,241	1.8	2.4	3	7	13.4
	15th	2,102	3.0	3.2	4	10	47.6
	16th	2,749	0.1	0.2	1	3	10.9
Southern Total		118,753	66.8	65.9	99	318	26.8
<i>Western Region</i>							
	6th	6,491	1.6	1.7	4	16	24.6
	7th	10,788	3.1	4.7	7	24	22.2
	9th	9,477	4.0	3.1	5	14	14.8
	14th	5,635	0.0	0.0	0	2	3.5
	21st	15,968	11.4	8.5	25	61	38.2
	22nd	3,108	0.4	0.2	0	2	6.4
Western Total		51,467	20.4	18.2	41	119	23.1
<i>Missing JD or Multiple JDs</i>			<i>0.6</i>	<i>0.8</i>			
Statewide Total		602,944	253.6	249.7	492	1,501	24.9

¹ Source: DOLA 2017 Estimates

² Per 10,000 youth in the population

September 2016 SB94 Supplemental Report

DYC Detention LOS by Judicial District

Region	JD	YTD Detention Releases	YTD LOS (days)	LOS (days) Compared to State AVG
<i>Central Region</i>				
	1st	174	12.1	-2.9
	2nd	250	17.9	2.9
	5th	6	15.3	0.3
	18th	240	12.0	-3.0
Central Total		670	14.3	-0.8
<i>Northeast Region</i>				
	8th	75	15.8	0.8
	13th	15	14.3	-0.7
	17th	124	11.2	-3.8
	19th	144	13.4	-1.6
	20th	51	9.1	-5.9
Northeast Total		409	12.7	-2.3
<i>Southern Region</i>				
	3rd	5	10.3	-4.8
	4th	194	19.2	4.2
	10th	68	14.2	-0.8
	11th	26	5.4	-9.6
	12th	8	29.8	14.8
	15th	11	32.0	17.0
	16th	3	4.7	-10.3
Southern Total		315	17.4	2.4
<i>Western Region</i>				
	6th	16	8.4	-6.6
	7th	21	14.8	-0.2
	9th	11	15.8	0.8
	14th	2	2.0	-13.0
	21st	58	15.0	-0.1
	22nd	3	6.1	-8.9
Western Total		111	13.6	-1.4
Statewide Total		1,503	15.0	-

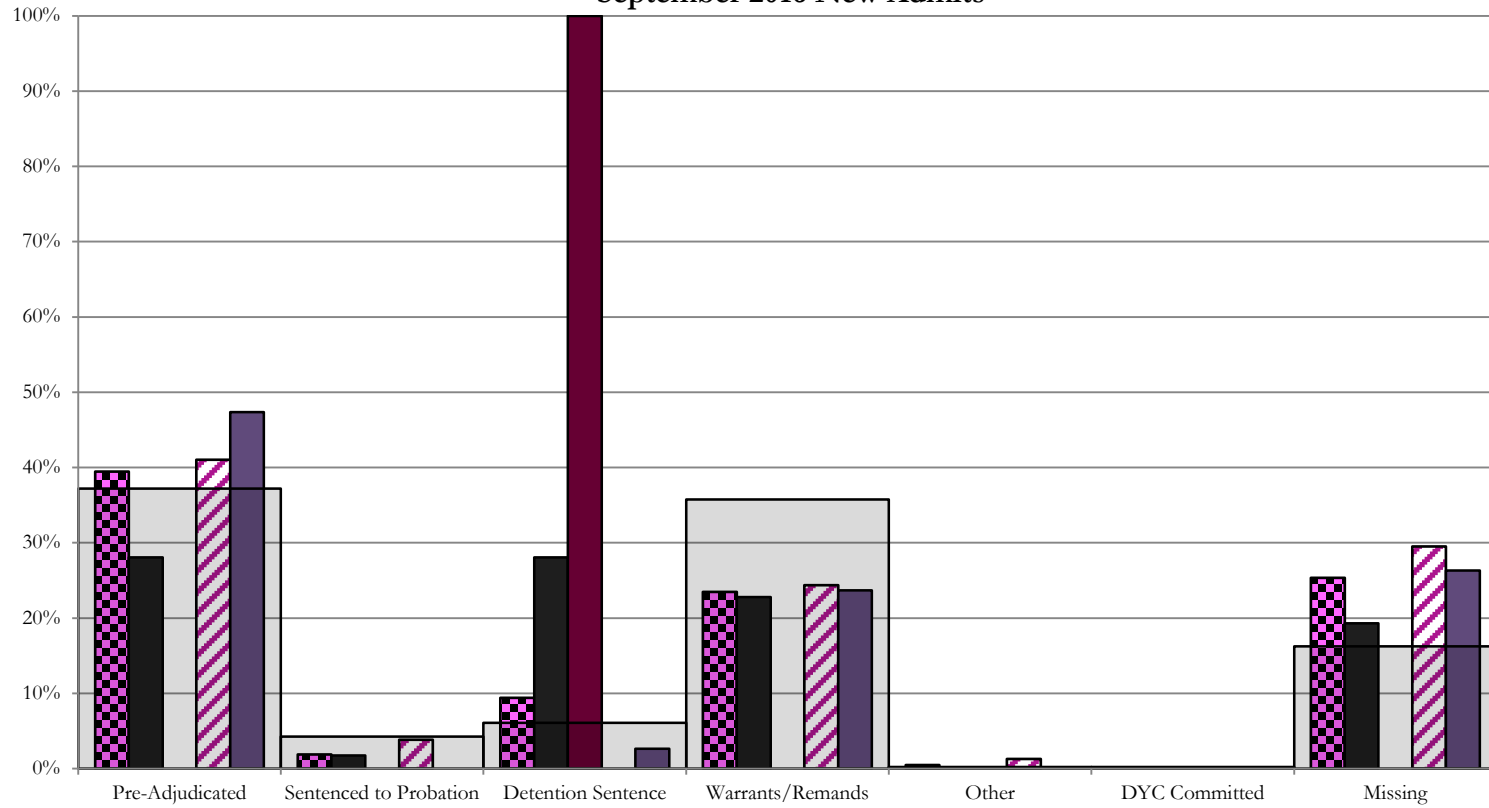
**September 2016
SB94 JDSAG Supplemental Report**

SB94 Reason Detained (RD) by Judicial District

Region	JD	Monthly New Admits	Pre-Adjudicated				Sentenced to Probation				Detention Sentence								Warrants/Remands				Other						DYC Committed		Missing							
			Felony		Misdemeanor		Technical Violator		New Charges		Probation Sentence		Detention Sentence		Valid Court Order (VCO) Truancy		Awaiting DSS (Social Services) Placement		Failure to Appear (FTA)		Failure to Comply (FTC)		Interstate Compact on Juveniles (ICJ) Hold		Immigration Hold		No Bond Hold		Out-of-Country Warrant		Institutional		Parole		Missing			
			#	%	#	%	#	%	#	%	#	%	#	%	#	%	#	%	#	%	#	%	#	%	#	%	#	%	#	%	#	%	#	%	#	%		
Central Region																																						
	1st	57	9	15.8%	7	12.3%	1	1.8%	0	0.0%	0	0.0%	16	28.1%	0	0.0%	0	0.0%	3	5.3%	10	17.5%	0	0.0%	0	0.0%	0	0.0%	0	0.0%	0	0.0%	0	0.0%	0	0.0%	11	19.3%
	2nd	78	27	34.6%	5	6.4%	0	0.0%	3	3.8%	0	0.0%	0	0.0%	0	0.0%	0	0.0%	9	11.5%	10	12.8%	1	1.3%	0	0.0%	0	0.0%	0	0.0%	0	0.0%	0	0.0%	0	0.0%	23	29.5%
	5th	2	0	0.0%	0	0.0%	0	0.0%	0	0.0%	0	0.0%	2	100.0%	0	0.0%	0	0.0%	0	0.0%	0	0.0%	0	0.0%	0	0.0%	0	0.0%	0	0.0%	0	0.0%	0	0.0%	0	0.0%	0	0.0%
	18th	76	13	17.1%	23	30.3%	0	0.0%	0	0.0%	0	0.0%	2	2.6%	0	0.0%	0	0.0%	4	5.3%	14	18.4%	0	0.0%	0	0.0%	0	0.0%	0	0.0%	0	0.0%	0	0.0%	0	0.0%	20	26.3%
Central Total		213	49	23%	35	16%	1	0.5%	3	1.4%	0	0.0%	20	9.4%	0	0.0%	0	0.0%	16	8%	34	16%	1	0.5%	0	0.0%	0	0.0%	0	0.0%	0	0.0%	0	0.0%	54	25.4%		
Northeast Region																																						
	8th	23	2	8.7%	2	8.7%	0	0.0%	0	0.0%	0	0.0%	1	4.3%	0	0.0%	0	0.0%	4	17.4%	8	34.8%	0	0.0%	0	0.0%	0	0.0%	0	0.0%	0	0.0%	0	0.0%	0	0.0%	6	26.1%
	13th	5	1	20.0%	1	20.0%	2	40.0%	0	0.0%	0	0.0%	0	0.0%	0	0.0%	0	0.0%	0	0.0%	1	20.0%	0	0.0%	0	0.0%	0	0.0%	0	0.0%	0	0.0%	0	0.0%	0	0.0%	0	0.0%
	17th	34	8	23.5%	1	2.9%	0	0.0%	0	0.0%	0	0.0%	0	0.0%	0	0.0%	0	0.0%	6	17.6%	13	38.2%	0	0.0%	0	0.0%	0	0.0%	0	0.0%	0	0.0%	0	0.0%	0	0.0%	6	17.6%
	19th	58	18	31.0%	13	22.4%	5	8.6%	0	0.0%	0	0.0%	2	3.4%	1	1.7%	0	0.0%	2	3.4%	17	29.3%	0	0.0%	0	0.0%	0	0.0%	0	0.0%	0	0.0%	0	0.0%	0	0.0%	0	0.0%
	20th	19	1	5.3%	6	31.6%	1	5.3%	0	0.0%	0	0.0%	2	10.5%	0	0.0%	0	0.0%	1	5.3%	5	26.3%	0	0.0%	0	0.0%	0	0.0%	0	0.0%	0	0.0%	0	0.0%	0	0.0%	3	15.8%
Northeast Total		139	30	22%	23	17%	8	5.8%	0	0.0%	0	0.0%	5	3.6%	1	0.7%	0	0.0%	13	9.4%	44	32%	0	0.0%	0	0.0%	0	0.0%	0	0.0%	0	0.0%	0	0.0%	15	11%		
Southern Region																																						
	3rd	1	1	100.0%	0	0%	0	0.0%	0	0.0%	0	0.0%	0	0.0%	0	0.0%	0	0.0%	0	0.0%	0	0.0%	0	0.0%	0	0.0%	0	0.0%	0	0.0%	0	0.0%	0	0.0%	0	0.0%		
	4th	59	20	33.9%	3	5.1%	0	0.0%	3	5.1%	0	0.0%	0	0.0%	0	0.0%	0	0.0%	3	5.1%	28	47.5%	0	0.0%	0	0.0%	0	0.0%	0	0.0%	0	0.0%	0	0.0%	2	3.4%		
	10th	23	3	13.0%	0	0.0%	1	4.3%	0	0.0%	0	0.0%	2	8.7%	0	0.0%	0	0.0%	7	30.4%	9	39.1%	0	0.0%	0	0.0%	0	0.0%	1	4.3%	0	0.0%	0	0.0%	0	0.0%		
	11th	8	1	12.5%	0	0.0%	0	0.0%	0	0.0%	0	0.0%	0	0.0%	0	0.0%	0	0.0%	1	12.5%	1	12.5%	0	0.0%	0	0.0%	0	0.0%	0	0.0%	0	0.0%	0	0.0%	5	62.5%		
	12th	3	0	0.0%	2	66.7%	1	33.3%	0	0.0%	0	0.0%	0	0.0%	0	0.0%	0	0.0%	0	0.0%	0	0.0%	0	0.0%	0	0.0%	0	0.0%	0	0.0%	0	0.0%	0	0.0%	0	0.0%		
	15th	4	1	25.0%	0	0.0%	0	0.0%	0	0.0%	0	0.0%	1	25.0%	0	0.0%	0	0.0%	0	0.0%	2	50%	0	0.0%	0	0.0%	0	0.0%	0	0.0%	0	0.0%	0	0.0%	0	0.0%		
	16th	1	0	0.0%	1	100.0%	0	0.0%	0	0.0%	0	0.0%	0	0.0%	0	0.0%	0	0.0%	0	0.0%	0	0.0%	0	0.0%	0	0.0%	0	0.0%	0	0.0%	0	0.0%	0	0.0%	0	0.0%		
Southern Total		99	26	26%	6	6%	2	2.0%	3	3.0%	0	0.0%	3	3.0%	0	0.0%	0	0.0%	11	11%	40	40%	0	0.0%	0	0.0%	0	0.0%	0	0.0%	0	0.0%	1	1.0%	0	0.0%	7	7%
Western Region																																						
	6th	4	1	25.0%	1	25.0%	2	50.0%	0	0.0%	0	0.0%	0	0.0%	0	0.0%	0	0.0%	0	0.0%	0	0.0%	0	0.0%	0	0.0%	0	0.0%	0	0.0%	0	0.0%	0	0.0%	0	0.0%		
	7th	7	3	42.9%	0	0.0%	0	0.0%	0	0.0%	0	0.0%	0	0.0%	0	0.0%	0	0.0%	1	14.3%	3	42.9%	0	0.0%	0	0.0%	0	0.0%	0	0.0%	0	0.0%	0	0.0%	0	0.0%	0	0.0%
	9th	5	1	20.0%	0	0.0%	2	40.0%	0	0.0%	0	0.0%	0	0.0%	0	0.0%	0	0.0%	1	20.0%	0	0.0%	0	0.0%	0	0.0%	0	0.0%	0	0.0%	0	0.0%	0	0.0%	1	20.0%		
	14th	0	0	0.0%	0	0.0%	0	0.0%	0	0.0%	0	0.0%	0	0.0%	0	0.0%	0	0.0%	0	0.0%	0	0.0%	0	0.0%	0	0.0%	0	0.0%	0	0.0%	0	0.0%	0	0.0%	0	0.0%		
	21st	25	4	16.0%	4	16.0%	0	0.0%	0	0.0%	0	0.0%	1	4.0%	0	0.0%	0	0.0%	0	0.0%	13	52.0%	0	0.0%	0	0.0%	0	0.0%	0	0.0%	0	0.0%	0	0.0%	3	12.0%		
	22nd	0	0	0.0%	0	0.0%	0	0.0%	0	0.0%	0	0.0%	0	0.0%	0	0.0%	0	0.0%	0	0.0%	0	0.0%	0	0.0%	0	0.0%	0	0.0%	0	0.0%	0	0.0%	0	0.0%	0	0.0%		
Western Total		41	9	22%	5	12.2%	4	9.8%	0	0.0%	0	0.0%	1	2.4%	0	0.0%	0	0.0%	1	2.4%	17	41%	0	0.0%	0	0.0%	0	0.0%	0	0.0%	0	0.0%	0	0.0%	4	10%		
Individual RD Totals		492	114	23%	69	14%	15	3.0%	6	1.2%	0	0.0%	29	5.9%	1	0.2%	0	0.0%	41	8%	135	27%	1	0.2%	0	0.0%	0	0.0%	0	0.0%	0	0.0%	1	0.2%	0	0.0%	80	16%
Statewide Totals		492	183	37.2%	21	4.3%					30			6.1%			176	35.8%	1			0.2%			1		0.2%			80	16%							

Central Region

SB94 Reason Detained by Judicial District September 2016 New Admits



■ CENTRAL REGION, 213 New Admits

■ 5th JD, 2 New Admits

■ 18th JD, 76 New Admits

■ 1st JD, 57 New Admits

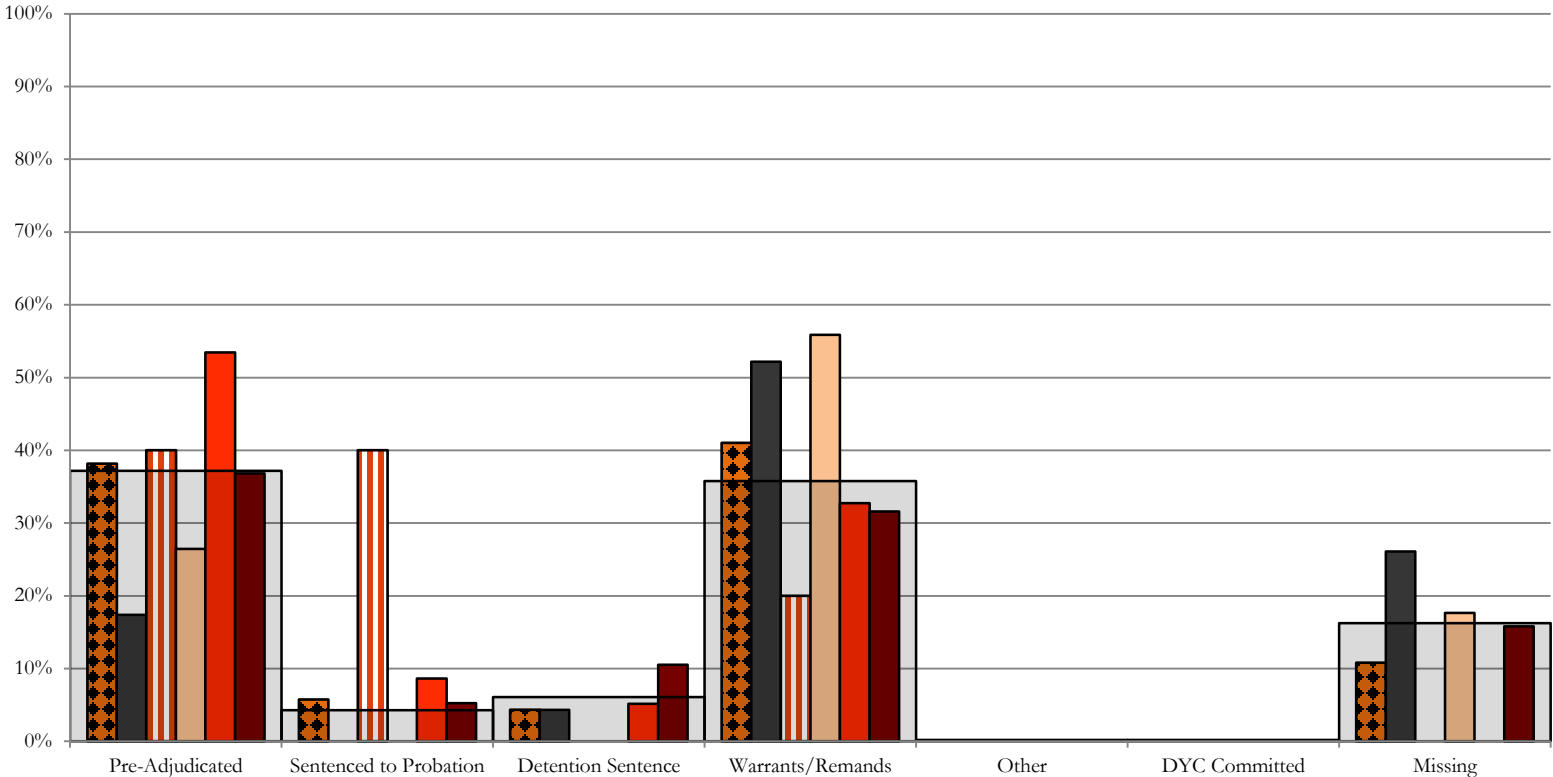
■ 2nd JD, 78 New Admits

■ STATEWIDE, 492 New Admits

Northeast Region

SB94 Reason Detained by Judicial District

September 2016 New Admits

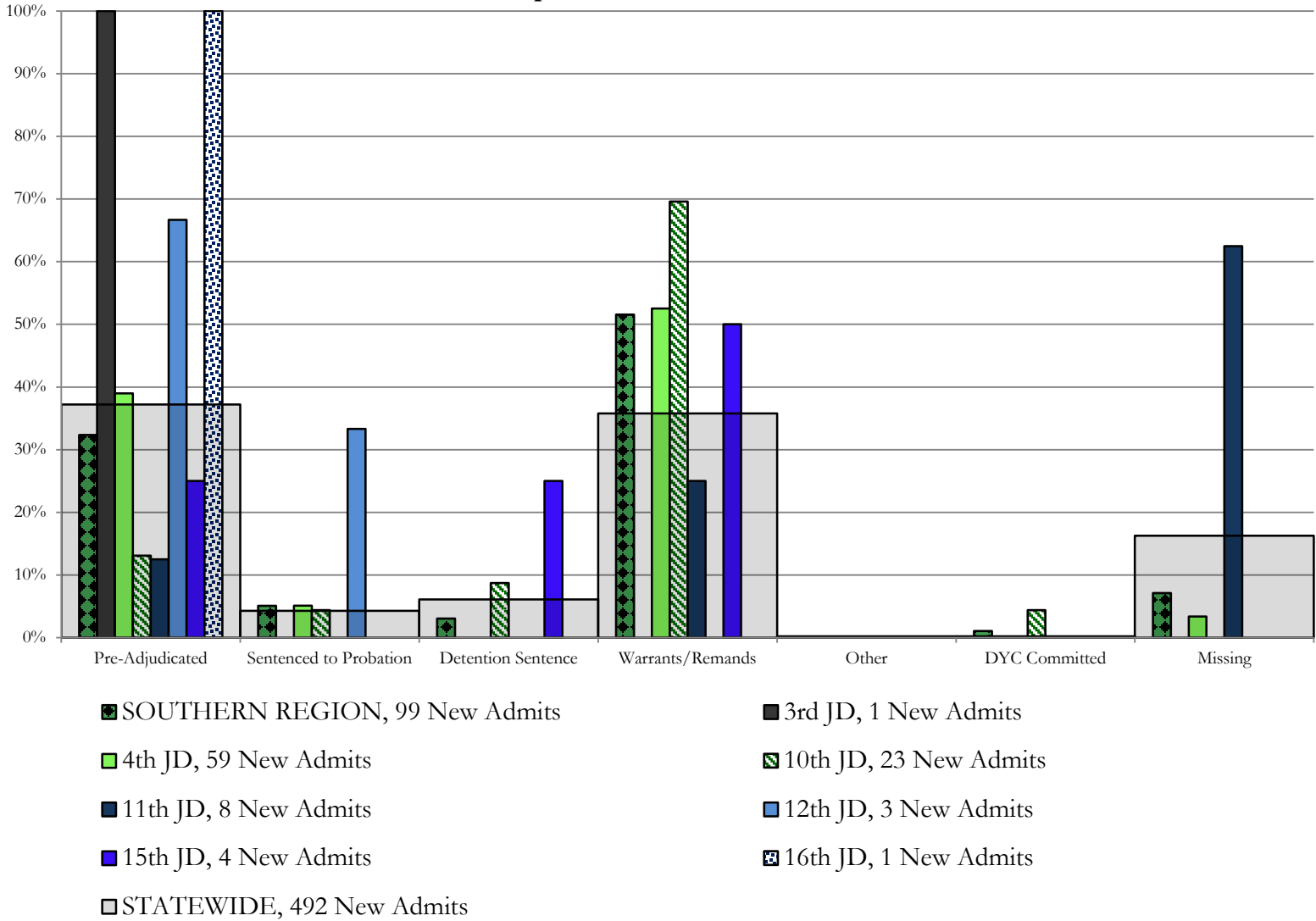


- NORTHEAST REGION, 139 New Admits
- 8th JD, 23 New Admits
- 13th JD, 5 New Admits
- 17th JD, 34 New Admits
- 19th JD, 58 New Admits
- 20th JD, 19 New Admits
- STATEWIDE, 492 New Admits

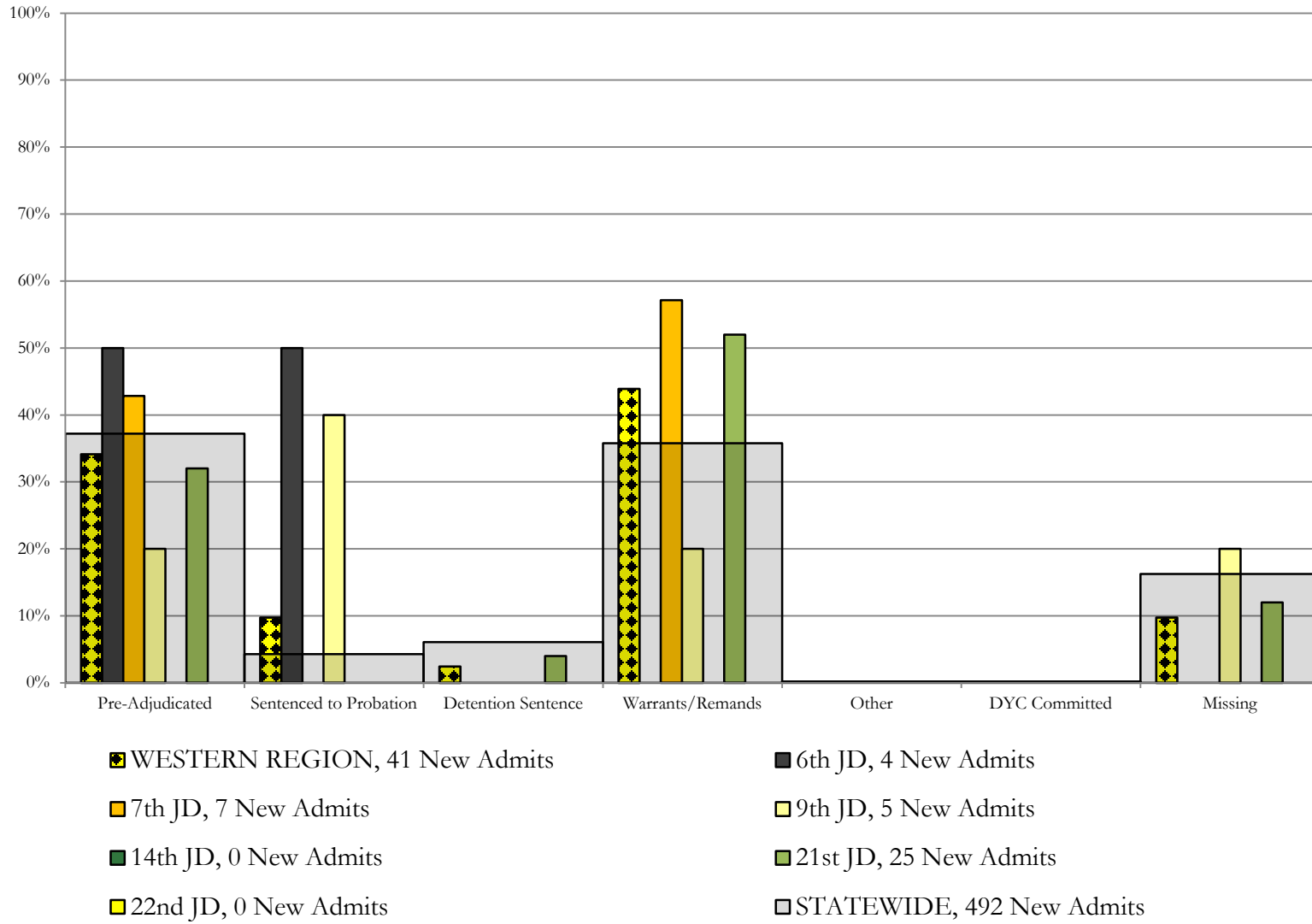
Southern Region

SB94 Reason Detained by Judicial District

September 2016 New Admits



Western Region SB94 Reason Detained by Judicial District September 2016 New Admits



September 2016 SB94 Supplemental Report

DYC Detention Maximum Youth Served by Judicial District¹

Region	JD	Detention Capacity	Detention ADP		Maximum Youth Served on a Single Day ^{2,3}			
			September 2016	YTD	September 2016		YTD	
					Number of Youth	% of Detention Capacity	Number of Youth	% of Detention Capacity
<i>Central Region</i>								
	1st	37	18.9	19.7	25	67.6%	30	81.1%
	2nd	64	44.4	47.0	53	82.8%	60	93.8%
	5th	4	1.6	1.3	2	50.0%	2	50.0%
	18th	61	35.3	34.9	40	65.6%	44	72.1%
Central Region		166	100.2	102.9	108	65.1%	121	72.9%
<i>Northeast Region</i>								
	8th	21	10.9	11.9	15	71.4%	19	90.5%
	13th	5	1.8	2.1	3	60.0%	5	100.0%
	17th	30	23.2	21.4	27	90.0%	29	96.7%
	19th	25	22.5	20.6	31	124.0%	31	124.0%
	20th	13	7.2	5.9	12	92.3%	12	92.3%
Northeast Region		94	65.5	61.9	75	79.8%	75	79.8%
<i>Southern Region</i>								
	3rd	2	1.2	0.7	2	100.0%	2	100.0%
	4th	51	45.2	46.3	51	100.0%	51	100.0%
	10th	13	12.6	11.3	17	130.8%	17	130.8%
	11th	8	3.1	1.8	5	62.5%	5	62.5%
	12th	4	1.8	2.4	3	75.0%	4	100.0%
	15th	2	3.0	3.2	4	200.0%	6	300.0%
	16th	3	0.1	0.2	1	33.3%	1	33.3%
Southern Region		83	66.8	65.9	77	92.8%	77	92.8%
<i>Western Region</i>								
	6th	5	1.6	1.7	3	60.0%	5	100.0%
	7th	7	3.1	4.7	5	71.4%	9	128.6%
	9th	6	4.0	3.1	5	83.3%	5	83.3%
	14th	3	0.0	0.0	0	0.0%	1	33.3%
	21st	14	11.4	8.5	15	107.1%	15	107.1%
	22nd	4	0.4	0.2	2	50.0%	2	50.0%
Western Region		39	20.4	18.2	23	59.0%	24	61.5%
<i>Missing JD or Multiple JDs</i>			0.6	0.8				
Statewide		382	253.6	249.7	277	72.5%	277	72.5%

¹ Maximum youth served is the highest number of youth in detention on a single day during the month or fiscal year.

² Regional figures are not the sum of judicial districts, but represent the maximum count on one day for the entire region.

³ State figures are not the sum of regional figures, but represent the maximum count on one day for the entire state.

September 2016 SB94 Supplemental Report

SB94 Community ADP by Judicial District

Region	JD	Committed		Diversion		ICJ		Municipal		Pre-Adjudicated		Sentenced		VCO		Total	
		September	YTD	September	YTD	September	YTD	September	YTD	September	YTD	September	YTD	September	YTD	September	YTD
<i>Central Region</i>																	
	1st	0.0	0.0	0.0	0.0	0.0	0.0	13.0	13.0	296.1	303.2	21.5	20.4	0.0	0.0	330.6	336.6
	2nd	8.4	7.2	0.0	0.0	0.0	0.0	0.0	0.0	342.6	323.2	76.4	76.8	1.0	1.0	428.4	408.2
	5th	0.0	0.0	18.0	18.0	0.0	0.0	0.0	0.0	22.9	23.0	31.1	32.0	0.0	0.0	71.9	73.0
	18th	1.3	1.2	5.0	5.0	0.0	0.1	0.1	0.0	314.0	305.4	51.5	52.4	8.7	8.9	380.5	373.0
Central Total		9.7	8.4	23.0	23.0	0.0	0.1	13.1	13.0	975.6	954.8	180.5	181.6	9.7	9.9	1211.5	1190.8
<i>Northeast Region</i>																	
	8th	0.0	0.0	3.5	3.2	0.0	0.0	0.0	0.0	51.0	50.9	36.9	43.2	0.0	0.0	91.4	97.3
	13th	0.0	0.0	0.0	0.0	0.0	0.0	0.0	0.1	10.0	10.5	8.9	9.0	3.0	3.0	21.9	22.6
	17th	4.0	3.6	0.0	0.0	0.0	0.0	1.0	1.0	199.4	185.7	44.0	42.7	0.0	0.0	248.4	233.0
	19th	0.2	0.4	0.0	0.0	0.0	0.0	0.0	0.0	64.7	58.6	41.1	43.7	1.0	1.1	107.1	103.8
	20th	2.0	2.0	28.0	21.0	0.0	0.0	0.0	0.0	66.9	54.0	64.2	60.8	4.0	4.0	165.0	141.8
Northeast Total		6.2	6.0	31.5	24.2	0.0	0.0	1.0	1.1	392.0	359.8	195.0	199.3	8.0	8.1	633.7	598.5
<i>Southern Region</i>																	
	3rd	0.0	0.0	0.0	0.0	0.0	0.0	0.0	0.0	10.5	10.3	6.0	5.7	1.0	1.0	17.5	16.9
	4th	3.0	3.0	0.0	0.0	0.0	0.0	81.0	80.2	274.9	257.5	149.0	142.2	2.0	2.0	509.9	485.0
	10th	0.0	0.1	0.0	0.0	0.0	0.0	80.7	80.8	25.3	24.7	24.1	22.2	6.9	5.9	137.0	133.6
	11th	0.0	0.0	0.0	0.0	0.0	0.0	0.0	0.0	17.2	16.4	36.0	35.7	2.0	2.2	55.2	54.3
	12th	0.0	0.0	0.0	0.0	0.0	0.0	1.8	1.1	5.8	5.8	2.6	1.5	0.0	0.0	10.2	8.4
	15th	0.0	0.0	0.0	0.0	0.0	0.0	0.0	0.0	6.1	5.9	14.7	12.1	0.0	0.0	20.8	18.1
	16th	0.0	0.0	0.0	0.0	0.0	0.0	0.0	0.0	3.4	2.6	16.0	16.5	20.0	20.6	39.4	39.6
Southern Total		3.0	3.1	0.0	0.0	0.0	0.0	163.5	162.1	343.2	323.1	248.5	235.9	31.9	31.7	790.1	755.9
<i>Western Region</i>																	
	6th	0.0	0.0	1.0	1.0	0.0	0.0	0.0	0.0	12.8	13.4	2.0	2.2	0.0	0.0	15.8	16.6
	7th	0.0	0.4	5.0	5.3	0.0	0.0	1.0	0.3	13.8	13.1	16.1	17.1	0.0	0.0	35.9	36.2
	9th	0.0	0.0	0.0	0.0	0.0	0.0	0.0	0.0	6.0	6.7	14.9	11.0	0.0	0.0	20.8	17.8
	14th	0.0	0.0	13.5	15.8	0.0	0.0	0.0	0.0	1.5	2.1	1.0	0.8	0.0	0.0	15.9	18.7
	21st	0.0	0.0	0.6	0.7	0.0	0.0	2.0	2.0	29.5	30.4	13.2	12.0	0.0	0.0	45.3	45.1
	22nd	0.0	0.0	0.0	0.0	0.0	0.0	0.0	0.0	8.0	7.0	4.0	4.0	0.0	0.0	12.0	11.0
Western Total		0.0	0.4	20.1	22.8	0.0	0.0	3.0	2.3	71.5	72.7	51.1	47.1	0.0	0.0	145.7	145.3
Statewide Total		18.9	17.8	74.6	70.0	0.0	0.1	180.5	178.6	1782.3	1710.4	675.1	664.0	49.6	49.7	2781.0	2690.6