

# August 2016 FY 2016-2017 SB94 JDSAG SUPPLEMENTAL REPORT

---

Prepared by the Division of Youth Corrections (DYC)  
Research and Evaluation Unit  
September 28th, 2016



**COLORADO**

**Office of Children,  
Youth & Families**

Division of Youth Corrections

# August 2016 SB94 Supplemental Report

## DYC Commitment ADP & New Commitments by Judicial District

Region	JD <sup>1</sup>	2017 Population Estimates <sup>2</sup>	ADP <sup>3</sup>		New Commitments		
			August 2016	YTD	August 2016	YTD	YTD Rate <sup>4</sup>
<i>Central Region</i>							
	1st	56,020	73.7	74.0	2	5	0.9
	2nd	62,634	122.0	125.6	1	6	1.0
	5th	10,162	9.0	9.0	0	0	0.0
	18th	121,363	65.0	66.6	2	8	0.7
<b>Central Total</b>		<b>250,179</b>	<b>269.7</b>	<b>275.3</b>	<b>5</b>	<b>19</b>	<b>0.8</b>
<i>Northeast Region</i>							
	8th	32,983	43.9	43.1	4	7	2.1
	13th	8,520	6.1	6.8	0	1	1.2
	17th	71,425	71.1	71.4	5	8	1.1
	19th	36,924	51.1	52.1	4	8	2.2
	20th	32,693	8.5	9.7	2	2	0.6
<b>Northeast Total</b>		<b>182,545</b>	<b>180.8</b>	<b>183.2</b>	<b>15</b>	<b>26</b>	<b>1.4</b>
<i>Southern Region</i>							
	3rd	1,871	1.0	1.3	0	1	5.3
	4th	81,725	84.6	84.3	5	7	0.9
	10th	17,869	42.0	41.7	2	3	1.7
	11th	7,196	4.0	4.0	0	0	0.0
	12th	5,241	9.0	8.9	0	0	0.0
	15th	2,102	-	-	0	0	0.0
	16th	2,749	-	-	0	0	0.0
<b>Southern Total</b>		<b>118,753</b>	<b>140.6</b>	<b>140.2</b>	<b>7</b>	<b>11</b>	<b>0.9</b>
<i>Western Region</i>							
	6th	6,491	7.0	6.9	0	1	1.5
	7th	10,788	8.5	8.5	0	0	0.0
	9th	9,477	3.0	3.0	0	0	0.0
	14th	5,635	3.0	3.0	0	0	0.0
	21st	15,968	38.3	37.3	3	6	3.8
	22nd	3,108	2.2	2.2	0	0	0.0
<b>Western Total</b>		<b>51,467</b>	<b>62.1</b>	<b>60.8</b>	<b>3</b>	<b>7</b>	<b>1.4</b>
<b>Statewide Total</b>		<b>602,944</b>	<b>653.3</b>	<b>659.5</b>	<b>30</b>	<b>63</b>	<b>1.0</b>

<sup>1</sup> JD represents the judicial district in which the client was committed. Regional totals are a sum of their respective judicial districts. Regional totals reported here may differ slightly from those reported in the Monthly Population Report, where region is defined by active caseloads.

<sup>2</sup> Source: DOLA 2017 Estimates

<sup>3</sup> Due to rounding, totals shown may not be an exact sum of the subtotals.

<sup>4</sup> Per 10,000 youth in the population

# August 2016 SB94 Supplemental Report

## DYC Detention ADP and New Detention Admissions by Judicial District

Region	JD	2017 Population Estimates <sup>1</sup>	ADP		New Admits		YTD New Admit Rate <sup>2</sup>
			August 2016	YTD	August 2016	YTD	
<i>Central Region</i>							
	1st	56,020	19.1	20.0	66	115	20.5
	2nd	62,634	44.8	48.3	73	149	23.8
	5th	10,162	1.0	1.2	1	4	3.9
	18th	121,363	33.7	34.7	89	163	13.4
<b>Central Total</b>		<b>250,179</b>	<b>98.5</b>	<b>104.2</b>	<b>229</b>	<b>431</b>	<b>17.2</b>
<i>Northeast Region</i>							
	8th	32,983	12.0	12.4	23	51	15.5
	13th	8,520	1.8	2.2	1	9	10.6
	17th	71,425	23.4	21.6	53	95	13.3
	19th	36,924	19.7	19.8	42	88	23.8
	20th	32,693	5.3	5.2	13	38	11.6
<b>Northeast Total</b>		<b>182,545</b>	<b>62.2</b>	<b>61.2</b>	<b>132</b>	<b>281</b>	<b>15.4</b>
<i>Southern Region</i>							
	3rd	1,871	0.5	0.5	2	4	21.4
	4th	81,725	47.5	46.9	73	137	16.8
	10th	17,869	11.5	10.7	27	47	26.3
	11th	7,196	1.0	1.2	8	19	26.4
	12th	5,241	2.6	2.7	3	4	7.6
	15th	2,102	2.6	3.3	3	6	28.5
	16th	2,749	0.0	0.2	1	2	7.3
<b>Southern Total</b>		<b>118,753</b>	<b>65.8</b>	<b>65.5</b>	<b>117</b>	<b>219</b>	<b>18.4</b>
<i>Western Region</i>							
	6th	6,491	1.5	1.7	6	12	18.5
	7th	10,788	5.9	5.4	2	17	15.8
	9th	9,477	3.0	2.7	6	9	9.5
	14th	5,635	0.0	0.1	1	2	3.5
	21st	15,968	7.2	7.0	18	36	22.5
	22nd	3,108	0.2	0.1	2	2	6.4
<b>Western Total</b>		<b>51,467</b>	<b>17.8</b>	<b>17.1</b>	<b>35</b>	<b>78</b>	<b>15.2</b>
<i>Missing JD or Multiple JDs</i>			<i>0.3</i>	<i>0.8</i>			
<b>Statewide Total</b>		<b>602,944</b>	<b>244.7</b>	<b>248.8</b>	<b>513</b>	<b>1,009</b>	<b>16.7</b>

<sup>1</sup> Source: DOLA 2017 Estimates

<sup>2</sup> Per 10,000 youth in the population

# August 2016 SB94 Supplemental Report

DYC Detention LOS by Judicial District				
Region	JD	YTD Detention Releases	YTD LOS (days)	LOS (days) Compared to State AVG
<i>Central Region</i>				
	1st	118	11.9	-2.7
	2nd	158	19.7	5.1
	5th	4	17.5	2.9
	18th	166	10.8	-3.8
<b>Central Total</b>		<b>446</b>	<b>14.3</b>	<b>-0.3</b>
<i>Northeast Region</i>				
	8th	52	10.9	-3.8
	13th	11	14.4	-0.3
	17th	88	11.9	-2.7
	19th	84	14.0	-0.6
	20th	38	8.2	-6.4
<b>Northeast Total</b>		<b>273</b>	<b>11.9</b>	<b>-2.7</b>
<i>Southern Region</i>				
	3rd	4	12.1	-2.5
	4th	133	18.2	3.5
	10th	45	14.4	-0.2
	11th	18	3.3	-11.3
	12th	3	47.9	33.3
	15th	6	27.1	12.5
	16th	2	6.6	-8.0
<b>Southern Total</b>		<b>211</b>	<b>16.5</b>	<b>1.9</b>
<i>Western Region</i>				
	6th	14	9.4	-5.2
	7th	15	14.0	-0.6
	9th	7	17.7	3.1
	14th	2	2.0	-12.6
	21st	37	15.2	0.6
	22nd	1	0.0	-14.6
<b>Western Total</b>		<b>76</b>	<b>13.6</b>	<b>-1.0</b>
<b>Statewide Total</b>		<b>1,003</b>	<b>14.6</b>	<b>-</b>

## August 2016 SB94 JDSAG Supplemental Report

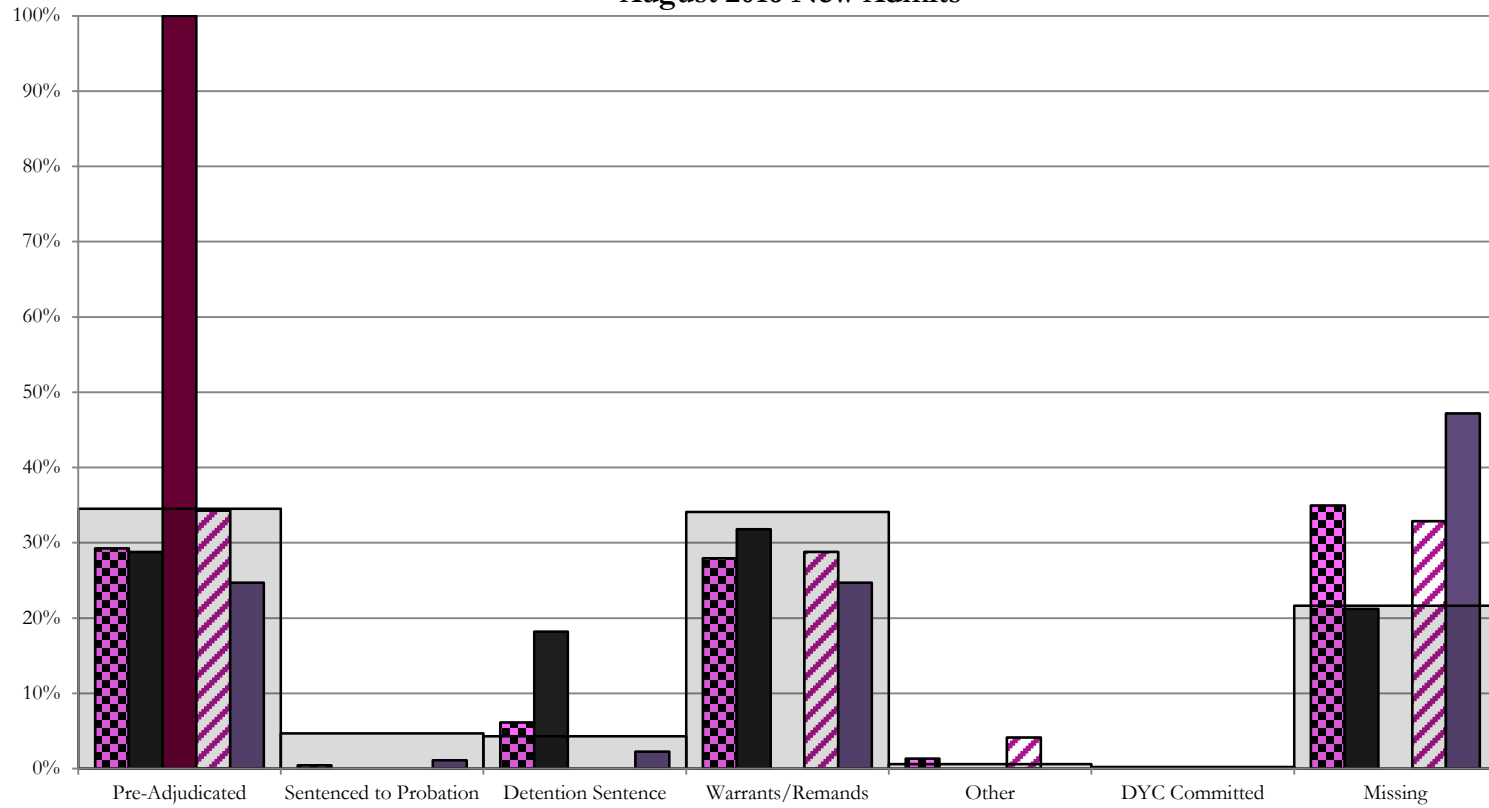
### SB94 Reason Detained (RD) by Judicial District

Region	JD	Pre-Adjudicated		Sentenced to Probation		Detention Sentence				Warrants/Remands		Other				DYC Committed		Missing																				
		Felony		Misdemeanor		Technical Violator	New Charges	Probation Sentence	Detention Sentence	Valid Court Order (VCO) Truancy	Awaiting DSS (Social Services) Placement	Failure to Appear (FTA)		Failure to Comply (FTC)	Interstate Compact on Juveniles (ICJ) Hold	Immigration Hold	No Bond Hold	Out-of-Country Warrant	Institutional		Parole		Missing															
		#	%	#	%							#	%						#	%	#	%	#	%	#	%	#	%	#	%	#	%	#	%				
<b>Central Region</b>																																						
	1st	66	9	13.6%	10	15.2%	0	0.0%	0	0.0%	0	0.0%	12	18.2%	0	0.0%	0	0.0%	5	7.6%	16	24.2%	0	0.0%	0	0.0%	0	0.0%	0	0.0%	0	0.0%	14	21.2%				
	2nd	73	22	30.1%	3	4.1%	0	0.0%	0	0.0%	0	0.0%	0	0.0%	0	0.0%	0	0.0%	12	16.4%	9	12.3%	3	4.1%	0	0.0%	0	0.0%	0	0.0%	0	0.0%	0	0.0%	24	32.9%		
	5th	1	1	100.0%	0	0.0%	0	0.0%	0	0.0%	0	0.0%	0	0.0%	0	0.0%	0	0.0%	0	0.0%	0	0.0%	0	0.0%	0	0.0%	0	0.0%	0	0.0%	0	0.0%	0	0.0%				
	18th	89	10	11.2%	12	13.5%	0	0.0%	1	1.1%	0	0.0%	2	2.2%	0	0.0%	0	0.0%	7	7.9%	15	16.9%	0	0.0%	0	0.0%	0	0.0%	0	0.0%	0	0.0%	42	47.2%				
<b>Central Total</b>		<b>229</b>	<b>42</b>	<b>18%</b>	<b>25</b>	<b>11%</b>	<b>0</b>	<b>0.0%</b>	<b>1</b>	<b>0.4%</b>	<b>0</b>	<b>0.0%</b>	<b>14</b>	<b>6.1%</b>	<b>0</b>	<b>0.0%</b>	<b>0</b>	<b>0.0%</b>	<b>24</b>	<b>10%</b>	<b>40</b>	<b>17%</b>	<b>3</b>	<b>1.3%</b>	<b>0</b>	<b>0.0%</b>	<b>0</b>	<b>0.0%</b>	<b>0</b>	<b>0.0%</b>	<b>0</b>	<b>0.0%</b>	<b>0</b>	<b>0.0%</b>	<b>80</b>	<b>34.9%</b>		
<b>Northeast Region</b>																																						
	8th	23	3	13.0%	4	17.4%	0	0.0%	0	0.0%	0	0.0%	0	0.0%	0	0.0%	0	0.0%	2	8.7%	14	60.9%	0	0.0%	0	0.0%	0	0.0%	0	0.0%	0	0.0%	0	0.0%	0	0.0%		
	1st	1	1	100.0%	0	0.0%	0	0.0%	0	0.0%	0	0.0%	0	0.0%	0	0.0%	0	0.0%	0	0.0%	0	0.0%	0	0.0%	0	0.0%	0	0.0%	0	0.0%	0	0.0%	0	0.0%				
	17th	53	16	30.2%	6	11.3%	1	1.9%	0	0.0%	0	0.0%	0	0.0%	0	0.0%	0	0.0%	4	7.5%	19	35.8%	0	0.0%	0	0.0%	0	0.0%	0	0.0%	0	0.0%	7	13.2%				
	19th	42	11	26.2%	11	26.2%	7	16.7%	0	0.0%	0	0.0%	3	7.1%	0	0.0%	0	0.0%	1	2.4%	9	21.4%	0	0.0%	0	0.0%	0	0.0%	0	0.0%	0	0.0%	0	0.0%				
	20th	13	3	23.1%	2	15.4%	3	23.1%	0	0.0%	0	0.0%	1	7.7%	0	0.0%	0	0.0%	1	7.7%	1	7.7%	0	0.0%	0	0.0%	0	0.0%	0	0.0%	0	0.0%	2	15.4%				
<b>Northeast Total</b>		<b>132</b>	<b>34</b>	<b>26%</b>	<b>23</b>	<b>17%</b>	<b>11</b>	<b>8.3%</b>	<b>0</b>	<b>0.0%</b>	<b>0</b>	<b>0.0%</b>	<b>4</b>	<b>3.0%</b>	<b>0</b>	<b>0.0%</b>	<b>0</b>	<b>0.0%</b>	<b>8</b>	<b>6.1%</b>	<b>43</b>	<b>33%</b>	<b>0</b>	<b>0.0%</b>	<b>0</b>	<b>0.0%</b>	<b>0</b>	<b>0.0%</b>	<b>0</b>	<b>0.0%</b>	<b>0</b>	<b>0.0%</b>	<b>0</b>	<b>0.0%</b>	<b>9</b>	<b>7%</b>		
<b>Southern Region</b>																																						
	3rd	2	0	0.0%	1	50%	1	50.0%	0	0.0%	0	0.0%	0	0.0%	0	0.0%	0	0.0%	0	0.0%	0	0.0%	0	0.0%	0	0.0%	0	0.0%	0	0.0%	0	0.0%	0	0.0%				
	4th	73	26	35.6%	6	8.2%	2	2.7%	6	8.2%	0	0.0%	0	0.0%	0	0.0%	0	0.0%	10	13.7%	18	24.7%	0	0.0%	0	0.0%	0	0.0%	1	1.4%	0	0.0%	4	5.5%				
	10th	27	3	11.1%	3	11.1%	0	0.0%	0	0.0%	0	0.0%	1	3.7%	0	0.0%	0	0.0%	6	22.2%	11	40.7%	0	0.0%	0	0.0%	0	0.0%	0	0.0%	0	0.0%	3	11.1%				
	11th	8	0	0.0%	1	12.5%	0	0.0%	0	0.0%	0	0.0%	0	0.0%	0	0.0%	0	0.0%	0	0.0%	0	0.0%	0	0.0%	0	0.0%	0	0.0%	0	0.0%	0	0.0%	7	87.5%				
	12th	3	0	0.0%	1	33.3%	0	0.0%	0	0.0%	0	0.0%	0	0.0%	0	0.0%	0	0.0%	1	33.3%	1	33.3%	0	0.0%	0	0.0%	0	0.0%	0	0.0%	0	0.0%	0	0.0%				
	15th	3	0	0.0%	0	0.0%	0	0.0%	0	0.0%	0	0.0%	1	33.3%	0	0.0%	0	0.0%	0	0.0%	2	67%	0	0.0%	0	0.0%	0	0.0%	0	0.0%	0	0.0%	0	0.0%				
	16th	1	0	0.0%	0	0.0%	0	0.0%	0	0.0%	0	0.0%	0	0.0%	0	0.0%	0	0.0%	0	0.0%	0	0.0%	0	0.0%	0	0.0%	0	0.0%	0	0.0%	0	0.0%	1	100.0%				
<b>Southern Total</b>		<b>117</b>	<b>29</b>	<b>25%</b>	<b>12</b>	<b>10%</b>	<b>3</b>	<b>2.6%</b>	<b>6</b>	<b>5.1%</b>	<b>0</b>	<b>0.0%</b>	<b>2</b>	<b>1.7%</b>	<b>0</b>	<b>0.0%</b>	<b>0</b>	<b>0.0%</b>	<b>17</b>	<b>15%</b>	<b>32</b>	<b>27%</b>	<b>0</b>	<b>0.0%</b>	<b>0</b>	<b>0.0%</b>	<b>0</b>	<b>0.0%</b>	<b>0</b>	<b>0.0%</b>	<b>0</b>	<b>0.0%</b>	<b>1</b>	<b>0.9%</b>	<b>0</b>	<b>0.0%</b>	<b>15</b>	<b>13%</b>
<b>Western Region</b>																																						
	6th	6	1	16.7%	1	16.7%	2	33.3%	0	0.0%	0	0.0%	0	0.0%	0	0.0%	0	0.0%	0	0.0%	1	16.7%	0	0.0%	0	0.0%	0	0.0%	0	0.0%	0	0.0%	0	0.0%	1	17%		
	7th	2	0	0.0%	0	0.0%	0	0.0%	0	0.0%	0	0.0%	0	0.0%	0	0.0%	0	0.0%	1	50.0%	1	50.0%	0	0.0%	0	0.0%	0	0.0%	0	0.0%	0	0.0%	0	0.0%	0	0.0%		
	9th	6	1	16.7%	0	0.0%	1	16.7%	0	0.0%	0	0.0%	0	0.0%	0	0.0%	0	0.0%	0	0.0%	0	0.0%	0	0.0%	0	0.0%	0	0.0%	0	0.0%	0	0.0%	0	0.0%	4	66.7%		
	14th	1	0	0.0%	0	0.0%	0	0.0%	0	0.0%	0	0.0%	0	0.0%	0	0.0%	0	0.0%	0	0.0%	0	0.0%	0	0.0%	0	0.0%	0	0.0%	0	0.0%	0	0.0%	1	100.0%				
	21st	18	5	27.8%	3	16.7%	0	0.0%	0	0.0%	0	0.0%	2	11.1%	0	0.0%	0	0.0%	1	5.6%	7	38.9%	0	0.0%	0	0.0%	0	0.0%	0	0.0%	0	0.0%	0	0.0%	0	0.0%		
	22nd	2	0	0.0%	1	50.0%	0	0.0%	0	0.0%	0	0.0%	0	0.0%	0	0.0%	0	0.0%	0	0.0%	0	0.0%	0	0.0%	0	0.0%	0	0.0%	0	0.0%	0	0.0%	1	50.0%				
<b>Western Total</b>		<b>35</b>	<b>7</b>	<b>20%</b>	<b>5</b>	<b>14.3%</b>	<b>3</b>	<b>8.6%</b>	<b>0</b>	<b>0.0%</b>	<b>0</b>	<b>0.0%</b>	<b>2</b>	<b>5.7%</b>	<b>0</b>	<b>0.0%</b>	<b>0</b>	<b>0.0%</b>	<b>2</b>	<b>5.7%</b>	<b>9</b>	<b>26%</b>	<b>0</b>	<b>0.0%</b>	<b>0</b>	<b>0.0%</b>	<b>0</b>	<b>0.0%</b>	<b>0</b>	<b>0.0%</b>	<b>0</b>	<b>0.0%</b>	<b>0</b>	<b>0.0%</b>	<b>7</b>	<b>20%</b>		
<b>Individual RD Totals</b>		<b>513</b>	<b>112</b>	<b>22%</b>	<b>65</b>	<b>13%</b>	<b>17</b>	<b>3.3%</b>	<b>7</b>	<b>1.4%</b>	<b>0</b>	<b>0.0%</b>	<b>22</b>	<b>4.3%</b>	<b>0</b>	<b>0.0%</b>	<b>0</b>	<b>0.0%</b>	<b>51</b>	<b>10%</b>	<b>124</b>	<b>24%</b>	<b>3</b>	<b>0.6%</b>	<b>0</b>	<b>0.0%</b>	<b>0</b>	<b>0.0%</b>	<b>0</b>	<b>0.0%</b>	<b>0</b>	<b>0.0%</b>	<b>1</b>	<b>0.2%</b>	<b>0</b>	<b>0.0%</b>	<b>111</b>	<b>22%</b>
<b>Statewide Totals</b>		<b>513</b>	<b>177</b>	<b>34.5%</b>	<b>24</b>	<b>4.7%</b>	<b>22</b>	<b>4.3%</b>	<b>175</b>	<b>34.1%</b>	<b>3</b>	<b>0.6%</b>	<b>0</b>	<b>0.0%</b>	<b>0</b>	<b>0.0%</b>	<b>0</b>	<b>0.0%</b>	<b>1</b>	<b>0.2%</b>	<b>111</b>	<b>22%</b>	<b>0</b>	<b>0.0%</b>	<b>0</b>	<b>0.0%</b>	<b>0</b>	<b>0.0%</b>	<b>0</b>	<b>0.0%</b>	<b>0</b>	<b>0.0%</b>	<b>0</b>	<b>0.0%</b>	<b>0</b>	<b>0.0%</b>		

# Central Region

## SB94 Reason Detained by Judicial District

### August 2016 New Admits



■ CENTRAL REGION, 229 New Admits

■ 5th JD, 1 New Admits

■ 18th JD, 89 New Admits

■ 1st JD, 66 New Admits

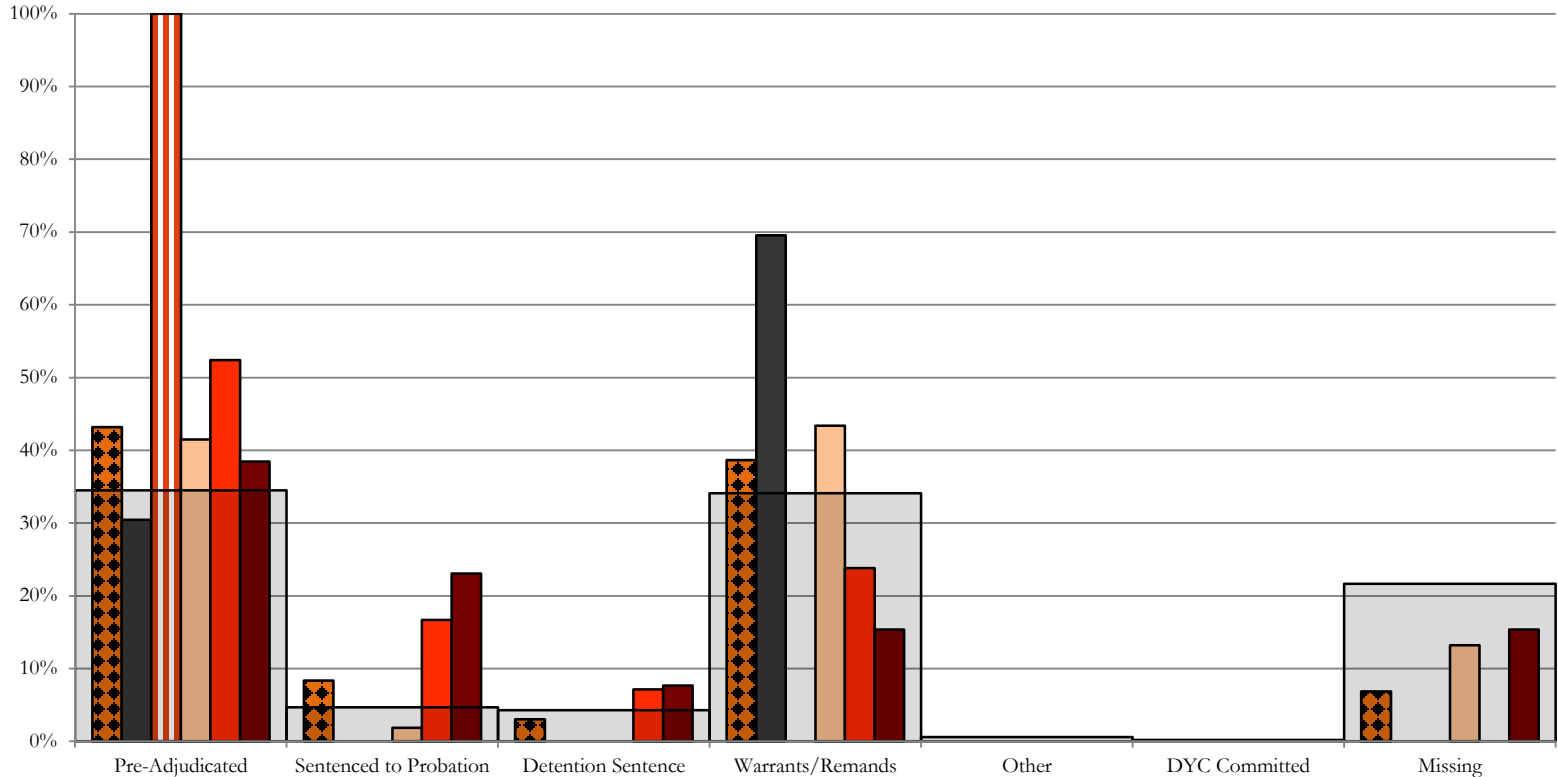
■ 2nd JD, 73 New Admits

■ STATEWIDE, 513 New Admits

# Northeast Region

## SB94 Reason Detained by Judicial District

### August 2016 New Admits

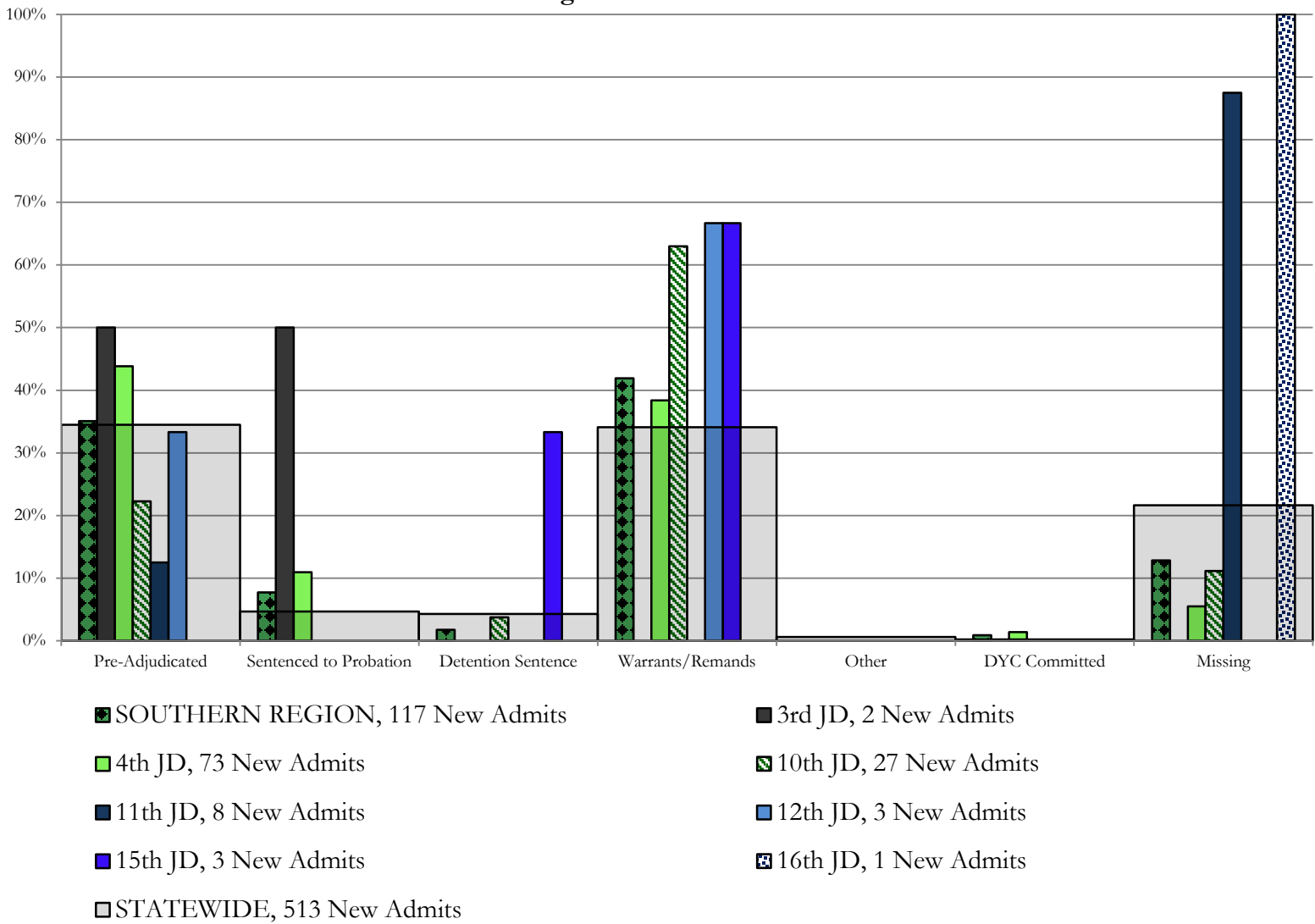


- NORTHEAST REGION, 132 New Admits
- 8th JD, 23 New Admits
- 13th JD, 1 New Admits
- 17th JD, 53 New Admits
- 19th JD, 42 New Admits
- 20th JD, 13 New Admits
- STATEWIDE, 513 New Admits

# Southern Region

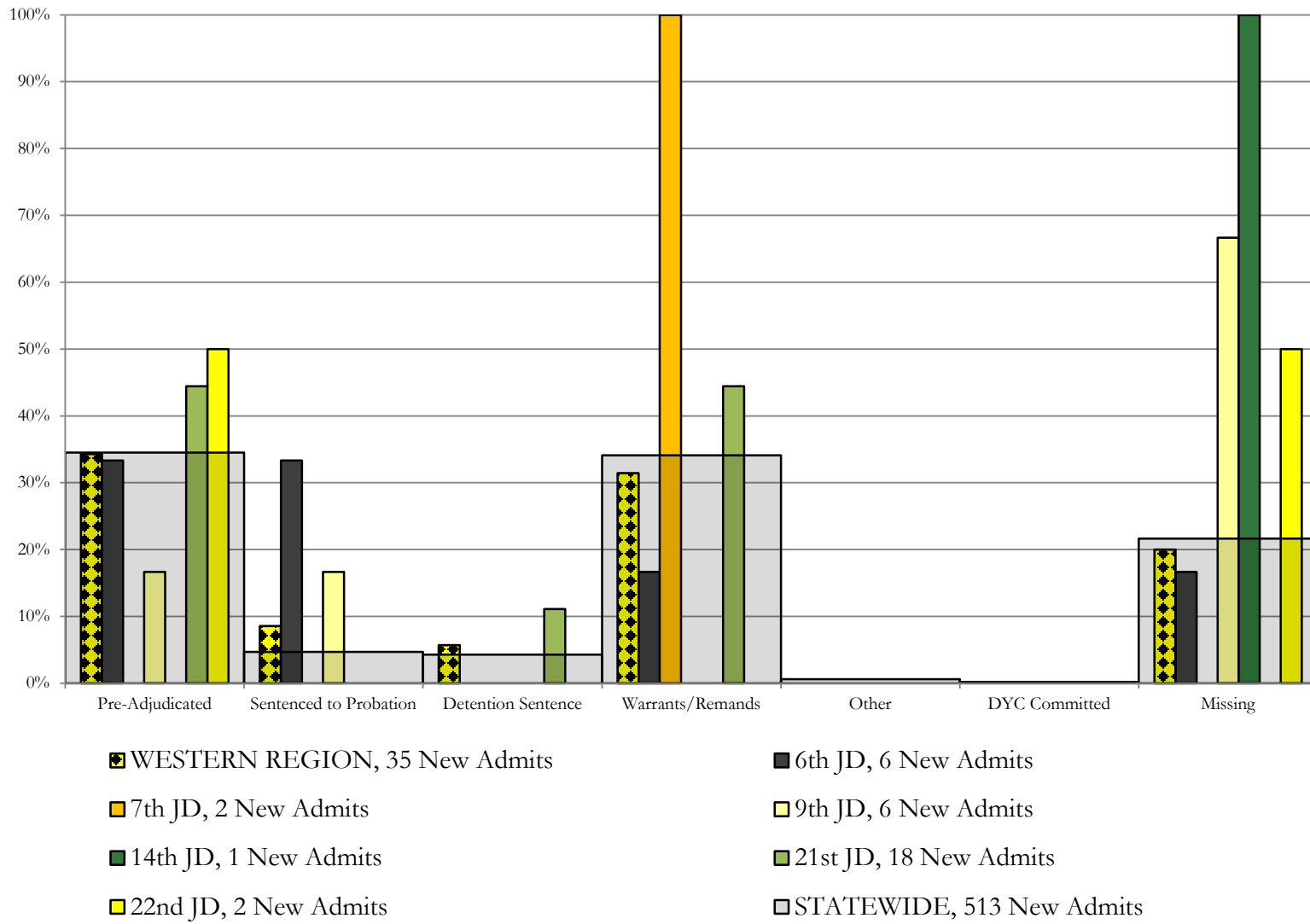
## SB94 Reason Detained by Judicial District

### August 2016 New Admits





## Western Region SB94 Reason Detained by Judicial District August 2016 New Admits



# August 2016 SB94 Supplemental Report

## DYC Detention Maximum Youth Served by Judicial District<sup>1</sup>

Region	JD	Detention Capacity	Detention ADP		Maximum Youth Served on a Single Day <sup>2,3</sup>			
			August 2016	YTD	August 2016		YTD	
					Number of Youth	% of Detention Capacity	Number of Youth	% of Detention Capacity
<i>Central Region</i>								
	1st	37	19.1	20.0	25	67.6%	30	81.1%
	2nd	64	44.8	48.3	54	84.4%	60	93.8%
	5th	4	1.0	1.2	2	50.0%	2	50.0%
	18th	61	33.7	34.7	43	70.5%	45	73.8%
<b>Central Region</b>		<b>166</b>	<b>98.5</b>	<b>104.2</b>	<b>108</b>	<b>65.1%</b>	<b>122</b>	<b>73.5%</b>
<i>Northeast Region</i>								
	8th	21	12.0	12.4	15	71.4%	19	90.5%
	13th	5	1.8	2.2	3	60.0%	5	100.0%
	17th	30	23.4	21.6	29	96.7%	29	96.7%
	19th	25	19.7	19.8	25	100.0%	26	104.0%
	20th	13	5.3	5.2	9	69.2%	9	69.2%
<b>Northeast Region</b>		<b>94</b>	<b>62.2</b>	<b>61.2</b>	<b>71</b>	<b>75.5%</b>	<b>71</b>	<b>75.5%</b>
<i>Southern Region</i>								
	3rd	2	0.5	0.5	1	50.0%	1	50.0%
	4th	51	47.5	46.9	51	100.0%	51	100.0%
	10th	13	11.5	10.7	15	115.4%	15	115.4%
	11th	8	1.0	1.2	3	37.5%	3	37.5%
	12th	4	2.6	2.7	4	100.0%	4	100.0%
	15th	2	2.6	3.3	4	200.0%	6	300.0%
	16th	3	0.0	0.2	1	33.3%	1	33.3%
<b>Southern Region</b>		<b>83</b>	<b>65.8</b>	<b>65.5</b>	<b>72</b>	<b>86.7%</b>	<b>72</b>	<b>86.7%</b>
<i>Western Region</i>								
	6th	5	1.5	1.7	5	100.0%	5	100.0%
	7th	7	5.9	5.4	9	128.6%	9	128.6%
	9th	6	3.0	2.7	5	83.3%	5	83.3%
	14th	3	0.0	0.1	1	33.3%	1	33.3%
	21st	14	7.2	7.0	12	85.7%	13	92.9%
	22nd	4	0.2	0.1	2	50.0%	2	50.0%
<b>Western Region</b>		<b>39</b>	<b>17.8</b>	<b>17.1</b>	<b>24</b>	<b>61.5%</b>	<b>24</b>	<b>61.5%</b>
<i>Missing JD or Multiple JDs</i>			0.3	0.8				
<b>Statewide</b>		<b>382</b>	<b>244.7</b>	<b>248.8</b>	<b>268</b>	<b>70.2%</b>	<b>270</b>	<b>70.7%</b>

<sup>1</sup> Maximum youth served is the highest number of youth in detention on a single day during the month or fiscal year.

<sup>2</sup> Regional figures are not the sum of judicial districts, but represent the maximum count on one day for the entire region.

<sup>3</sup> State figures are not the sum of regional figures, but represent the maximum count on one day for the entire state.

## August 2016 SB94 Supplemental Report

### SB94 Community ADP by Judicial District

Region	JD	Committed		Diversion		ICJ		Municipal		Pre-Adjudicated		Sentenced		VCO		Total	
		August	YTD	August	YTD	August	YTD	August	YTD	August	YTD	August	YTD	August	YTD	August	YTD
<i>Central Region</i>																	
	1st	0.0	0.0	0.0	0.0	0.0	0.0	13.1	13.0	299.8	300.6	20.3	19.8	0.0	0.0	333.1	333.4
	2nd	7.0	6.7	0.0	0.0	0.0	0.0	0.0	0.0	316.8	315.8	76.3	77.0	1.0	1.0	401.1	400.4
	5th	0.0	0.0	18.0	18.0	0.0	0.0	0.0	0.0	23.0	23.0	28.3	29.5	0.0	0.0	69.3	70.5
	18th	1.0	1.1	5.0	5.0	0.1	0.1	0.0	0.0	311.3	306.3	52.9	53.5	9.0	9.0	379.3	375.0
<b>Central Total</b>		<b>8.0</b>	<b>7.8</b>	<b>23.0</b>	<b>23.0</b>	<b>0.1</b>	<b>0.1</b>	<b>13.1</b>	<b>13.0</b>	<b>950.9</b>	<b>945.6</b>	<b>177.8</b>	<b>179.8</b>	<b>10.0</b>	<b>10.0</b>	<b>1182.8</b>	<b>1179.3</b>
<i>Northeast Region</i>																	
	8th	0.0	0.0	3.0	3.0	0.0	0.0	0.0	0.0	50.4	51.4	40.0	44.6	0.0	0.0	93.5	99.1
	13th	0.0	0.0	0.0	0.0	0.0	0.0	0.0	0.2	11.2	11.3	8.6	8.8	3.0	3.0	22.8	23.2
	17th	3.8	3.4	0.0	0.0	0.0	0.0	1.0	1.0	184.8	179.1	44.0	42.1	0.0	0.0	233.6	225.6
	19th	0.0	0.5	0.0	0.0	0.0	0.0	0.0	0.0	55.6	55.3	52.4	49.2	1.2	1.2	109.3	106.2
	20th	2.0	2.0	23.3	17.2	0.0	0.0	0.0	0.0	65.4	58.5	59.0	56.2	4.0	4.0	153.7	137.9
<b>Northeast Total</b>		<b>5.9</b>	<b>5.9</b>	<b>26.3</b>	<b>20.2</b>	<b>0.0</b>	<b>0.0</b>	<b>1.0</b>	<b>1.2</b>	<b>367.4</b>	<b>355.6</b>	<b>204.1</b>	<b>200.9</b>	<b>8.2</b>	<b>8.2</b>	<b>612.8</b>	<b>592.0</b>
<i>Southern Region</i>																	
	3rd	0.0	0.0	0.0	0.0	0.0	0.0	0.0	0.0	12.7	11.8	8.3	8.2	1.0	1.0	21.9	21.0
	4th	3.0	3.0	0.0	0.0	0.0	0.0	80.5	79.9	259.4	248.5	143.4	140.0	2.0	2.0	488.3	473.3
	10th	1.0	1.1	0.0	0.0	0.0	0.0	80.1	81.8	25.6	24.5	24.4	21.3	5.9	5.5	137.0	134.2
	11th	0.0	0.0	0.0	0.0	0.0	0.0	0.0	0.0	16.8	16.2	35.0	34.9	2.0	2.3	53.8	53.4
	12th	0.0	0.0	0.0	0.0	0.0	0.0	1.0	0.8	5.6	5.8	1.7	0.9	0.0	0.0	8.3	7.5
	15th	0.0	0.0	0.0	0.0	0.0	0.0	0.0	0.0	6.4	5.9	12.0	10.9	0.0	0.0	18.4	16.8
	16th	0.0	0.0	0.0	0.0	0.0	0.0	0.0	0.0	2.3	2.1	15.4	15.7	20.7	20.9	38.4	38.7
<b>Southern Total</b>		<b>4.0</b>	<b>4.1</b>	<b>0.0</b>	<b>0.0</b>	<b>0.0</b>	<b>0.0</b>	<b>161.6</b>	<b>162.5</b>	<b>328.7</b>	<b>314.8</b>	<b>240.1</b>	<b>231.9</b>	<b>31.6</b>	<b>31.6</b>	<b>766.0</b>	<b>744.8</b>
<i>Western Region</i>																	
	6th	0.0	0.0	1.0	1.0	0.0	0.0	0.0	0.0	13.6	13.7	2.4	2.4	1.0	1.0	18.0	18.0
	7th	0.1	0.5	5.0	5.5	0.0	0.0	0.0	0.0	14.0	12.8	17.1	17.5	0.0	0.0	36.2	36.4
	9th	0.0	0.0	0.0	0.0	0.0	0.0	0.0	0.0	7.3	7.1	6.8	8.3	0.0	0.0	14.2	15.4
	14th	0.0	0.0	29.0	29.0	0.0	0.0	0.0	0.0	2.0	2.4	2.0	1.7	0.0	0.0	33.0	33.1
	21st	0.0	0.0	1.0	0.7	0.0	0.0	4.0	4.0	30.9	31.9	14.1	12.6	0.0	0.0	50.0	49.2
	22nd	0.0	0.0	0.0	0.0	0.0	0.0	0.0	0.0	6.2	5.5	4.0	4.0	0.0	0.0	10.2	9.5
<b>Western Total</b>		<b>0.1</b>	<b>0.5</b>	<b>36.0</b>	<b>36.2</b>	<b>0.0</b>	<b>0.0</b>	<b>4.0</b>	<b>4.0</b>	<b>74.1</b>	<b>73.4</b>	<b>46.4</b>	<b>46.4</b>	<b>1.0</b>	<b>1.0</b>	<b>161.5</b>	<b>161.5</b>
<b>Statewide Total</b>		<b>17.9</b>	<b>18.3</b>	<b>85.3</b>	<b>79.4</b>	<b>0.1</b>	<b>0.1</b>	<b>179.7</b>	<b>180.7</b>	<b>1721.0</b>	<b>1689.3</b>	<b>668.4</b>	<b>659.0</b>	<b>50.8</b>	<b>50.8</b>	<b>2723.2</b>	<b>2677.7</b>