

July 2016 FY 2016-2017 SB94 JDSAG SUPPLEMENTAL REPORT

Prepared by the Division of Youth Corrections (DYC)
Research and Evaluation Unit
August 26th, 2016



COLORADO

**Office of Children,
Youth & Families**

Division of Youth Corrections

July 2016 SB94 Supplemental Report

DYC Commitment ADP & New Commitments by Judicial District

Region	JD ¹	2017 Population Estimates ²	ADP ³		New Commitments		
			July 2016	YTD	July 2016	YTD	YTD Rate ⁴
<i>Central Region</i>							
	1st	56,020	74.4	74.4	3	3	0.5
	2nd	62,634	129.3	129.3	5	5	0.8
	5th	10,162	9.0	9.0	0	0	0.0
	18th	121,363	67.2	67.2	6	6	0.5
Central Total		250,179	279.9	279.9	14	14	0.6
<i>Northeast Region</i>							
	8th	32,983	42.2	42.2	3	3	0.9
	13th	8,520	7.5	7.5	1	1	1.2
	17th	71,425	71.7	71.7	2	2	0.3
	19th	36,924	53.2	53.2	4	4	1.1
	20th	32,693	10.9	10.9	0	0	0.0
Northeast Total		182,545	185.6	185.6	10	10	0.5
<i>Southern Region</i>							
	3rd	1,871	1.6	1.6	1	1	5.3
	4th	81,725	83.9	83.9	2	2	0.2
	10th	17,869	41.4	41.4	1	1	0.6
	11th	7,196	4.0	4.0	0	0	0.0
	12th	5,241	8.8	8.8	0	0	0.0
	15th	2,102	-	-	0	0	0.0
	16th	2,749	-	-	0	0	0.0
Southern Total		118,753	139.6	139.6	4	4	0.3
<i>Western Region</i>							
	6th	6,491	6.8	6.8	1	1	1.5
	7th	10,788	8.4	8.4	0	0	0.0
	9th	9,477	3.0	3.0	0	0	0.0
	14th	5,635	3.0	3.0	0	0	0.0
	21st	15,968	36.3	36.3	3	3	1.9
	22nd	3,108	2.1	2.1	0	0	0.0
Western Total		51,467	59.5	59.5	4	4	0.8
Statewide Total		602,944	664.7	664.7	32	32	0.5

¹ JD represents the judicial district in which the client was committed. Regional totals are a sum of their respective judicial districts. Regional totals reported here may differ slightly from those reported in the Monthly Population Report, where region is defined by active caseloads.

² Source: DOLA 2017 Estimates

³ Due to rounding, totals shown may not be an exact sum of the subtotals.

⁴ Per 10,000 youth in the population

July 2016

SB94 Supplemental Report

DYC Detention ADP and New Detention Admissions by Judicial District

Region	JD	2017 Population Estimates ¹	ADP		New Admits		
			July 2016	YTD	July 2016	YTD	YTD New Admit Rate ²
<i>Central Region</i>							
	1st	56,020	21.0	21.0	49	49	8.7
	2nd	62,634	51.8	51.8	76	76	12.1
	5th	10,162	1.4	1.4	3	3	3.0
	18th	121,363	37.2	37.2	75	75	6.2
Central Total		250,179	111.3	111.3	203	203	8.1
<i>Northeast Region</i>							
	8th	32,983	12.9	12.9	28	28	8.5
	13th	8,520	2.6	2.6	8	8	9.4
	17th	71,425	19.8	19.8	39	39	5.5
	19th	36,924	19.8	19.8	46	46	12.5
	20th	32,693	5.1	5.1	25	25	7.6
Northeast Total		182,545	60.1	60.1	146	146	8.0
<i>Southern Region</i>							
	3rd	1,871	0.5	0.5	2	2	10.7
	4th	81,725	46.2	46.2	64	64	7.8
	10th	17,869	9.9	9.9	20	20	11.2
	11th	7,196	1.3	1.3	11	11	15.3
	12th	5,241	2.8	2.8	1	1	1.9
	15th	2,102	4.0	4.0	3	3	14.3
	16th	2,749	0.4	0.4	1	1	3.6
Southern Total		118,753	65.2	65.2	102	102	8.6
<i>Western Region</i>							
	6th	6,491	2.0	2.0	6	6	9.2
	7th	10,788	4.9	4.9	15	15	13.9
	9th	9,477	2.5	2.5	3	3	3.2
	14th	5,635	0.1	0.1	1	1	1.8
	21st	15,968	6.9	6.9	18	18	11.3
	22nd	3,108	0.0	0.0	0	0	0.0
Western Total		51,467	16.4	16.4	43	43	8.4
<i>Missing JD or Multiple JDs</i>			<i>1.3</i>	<i>1.3</i>			
Statewide Total		602,944	254.3	254.3	494	494	8.2

¹ Source: DOLA 2017 Estimates

² Per 10,000 youth in the population

July 2016 SB94 Supplemental Report

DYC Detention LOS by Judicial District

Region	JD	YTD Detention Releases	YTD LOS (days)	LOS (days) Compared to State AVG
<i>Central Region</i>				
	1st	53	15.3	0.7
	2nd	78	21.9	7.2
	5th	1	5.2	-9.5
	18th	75	9.7	-5.0
Central Total		207	15.7	1.0
<i>Northeast Region</i>				
	8th	26	8.6	-6.0
	13th	8	7.4	-7.3
	17th	36	14.0	-0.6
	19th	39	15.5	0.8
	20th	22	4.2	-10.4
Northeast Total		131	11.4	-3.3
<i>Southern Region</i>				
	3rd	3	14.2	-0.5
	4th	60	17.7	3.1
	10th	17	12.5	-2.1
	11th	11	4.2	-10.4
	12th	0	0.0	-14.7
	15th	2	26.4	11.7
	16th	1	13.4	-1.2
Southern Total		94	15.2	0.6
<i>Western Region</i>				
	6th	6	6.6	-8.1
	7th	8	7.3	-7.3
	9th	4	12.6	-2.0
	14th	1	3.1	-11.6
	21st	17	20.4	5.7
	22nd	1	0.0	-14.6
Western Total		37	13.5	-1.2
Statewide Total		468	14.7	-

July 2016 SB94 JDSAG Supplemental Report

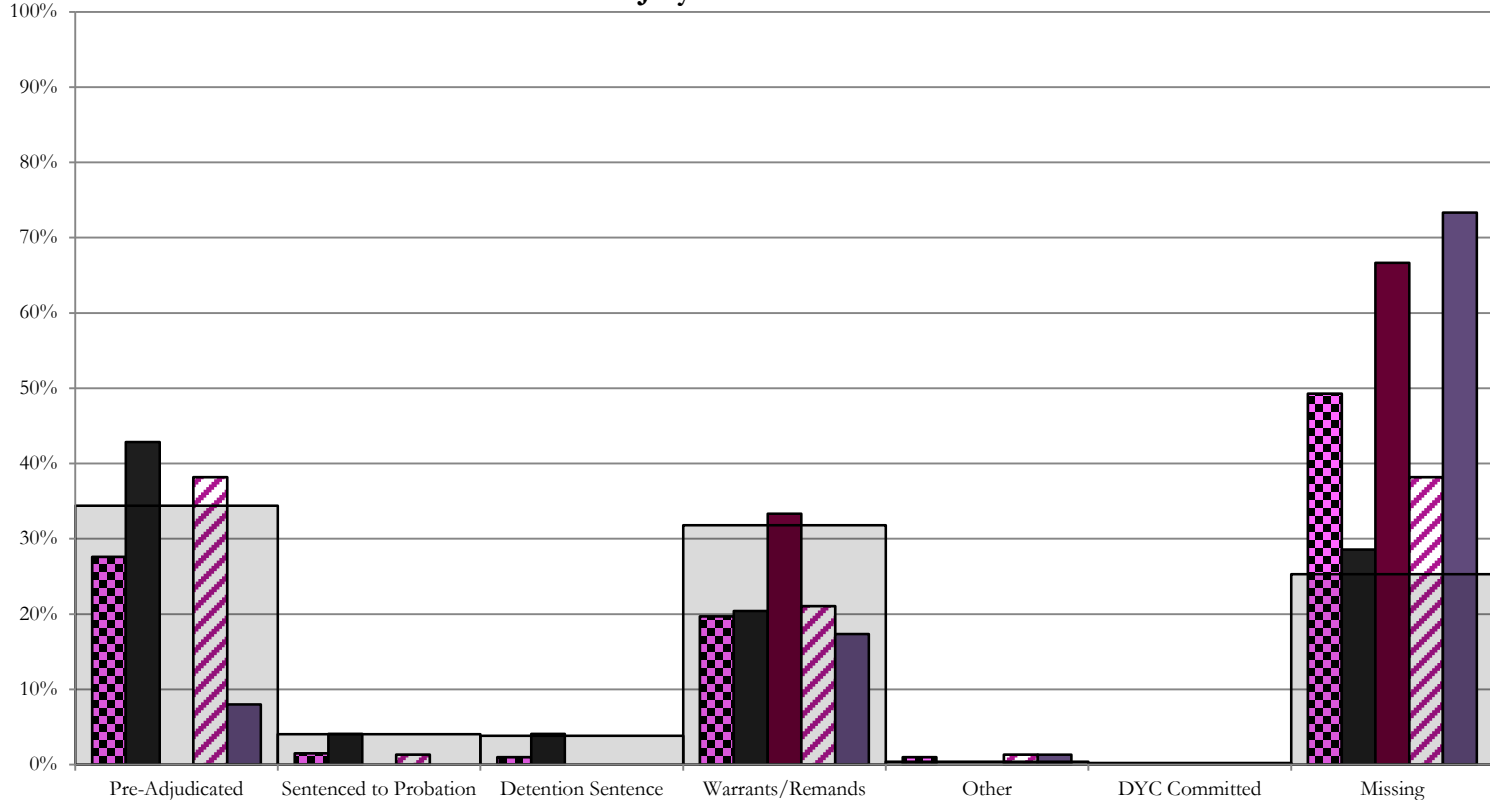
SB94 Reason Detained (RD) by Judicial District

Region	JD	Monthly New Admits	Pre-Adjudicated				Sentenced to Probation				Detention Sentence								Warrants/Remands				Other						DYC Committed		Missing							
			Felony		Misdemeanor		Technical Violator		New Charges		Probation Sentence		Detention Sentence		Valid Court Order (VCO) Truancy		Awaiting DSS (Social Services) Placement		Failure to Appear (FTA)		Failure to Comply (FTC)		Interstate Compact on Juveniles (ICJ) Hold		Immigration Hold		No Bond Hold		Out-of-Country Warrant		Institutional		Parole		Missing			
			#	%	#	%	#	%	#	%	#	%	#	%	#	%	#	%	#	%	#	%	#	%	#	%	#	%	#	%	#	%	#	%	#	%		
Central Region																																						
	1st	49	10	20.4%	11	22.4%	2	4.1%	0	0.0%	0	0.0%	2	4.1%	0	0.0%	0	0.0%	3	6.1%	7	14.3%	0	0.0%	0	0.0%	0	0.0%	0	0.0%	0	0.0%	0	0.0%	0	0.0%	14	28.6%
	2nd	76	23	30.3%	6	7.9%	1	1.3%	0	0.0%	0	0.0%	0	0.0%	0	0.0%	0	0.0%	8	10.5%	8	10.5%	1	1.3%	0	0.0%	0	0.0%	0	0.0%	0	0.0%	0	0.0%	0	0.0%	29	38.2%
	5th	3	0	0.0%	0	0.0%	0	0.0%	0	0.0%	0	0.0%	0	0.0%	0	0.0%	0	0.0%	0	0.0%	1	33.3%	0	0.0%	0	0.0%	0	0.0%	0	0.0%	0	0.0%	0	0.0%	0	0.0%	2	66.7%
	18th	75	2	2.7%	4	5.3%	0	0.0%	0	0.0%	0	0.0%	0	0.0%	0	0.0%	0	0.0%	4	5.3%	9	12.0%	1	1.3%	0	0.0%	0	0.0%	0	0.0%	0	0.0%	0	0.0%	0	0.0%	55	73.3%
Central Total		203	35	17%	21	10%	3	1.5%	0	0.0%	0	0.0%	2	1.0%	0	0.0%	0	0.0%	15	7%	25	12%	2	1.0%	0	0.0%	0	0.0%	0	0.0%	0	0.0%	0	0.0%	0	0.0%	100	49.3%
Northeast Region																																						
	8th	28	2	7.1%	5	17.9%	0	0.0%	0	0.0%	0	0.0%	2	7.1%	0	0.0%	0	0.0%	2	7.1%	16	57.1%	0	0.0%	0	0.0%	0	0.0%	0	0.0%	0	0.0%	0	0.0%	0	0.0%	1	3.6%
	13th	8	2	25.0%	0	0.0%	1	12.5%	0	0.0%	0	0.0%	0	0.0%	0	0.0%	0	0.0%	2	25.0%	2	25.0%	0	0.0%	0	0.0%	0	0.0%	0	0.0%	0	0.0%	0	0.0%	0	0.0%	1	12.5%
	17th	39	11	28.2%	5	12.8%	1	2.6%	0	0.0%	0	0.0%	0	0.0%	0	0.0%	0	0.0%	3	7.7%	15	38.5%	0	0.0%	0	0.0%	0	0.0%	0	0.0%	0	0.0%	0	0.0%	4	10.3%		
	19th	46	14	30.4%	6	13.0%	9	19.6%	0	0.0%	0	0.0%	0	0.0%	0	0.0%	0	0.0%	2	4.3%	14	30.4%	0	0.0%	0	0.0%	0	0.0%	0	0.0%	0	0.0%	0	0.0%	1	2.2%		
	20th	25	8	32.0%	1	4.0%	2	8.0%	0	0.0%	0	0.0%	7	28.0%	0	0.0%	0	0.0%	0	0.0%	6	24.0%	0	0.0%	0	0.0%	0	0.0%	0	0.0%	0	0.0%	0	0.0%	1	4.0%		
Northeast Total		146	37	25%	17	12%	13	8.9%	0	0.0%	0	0.0%	9	6.2%	0	0.0%	0	0.0%	9	6.2%	53	36%	0	0.0%	0	0.0%	0	0.0%	0	0.0%	0	0.0%	0	0.0%	0	0.0%	8	5%
Southern Region																																						
	3rd	2	0	0.0%	0	0%	0	0.0%	0	0.0%	0	0.0%	0	0.0%	0	0.0%	0	0.0%	0	0.0%	1	50.0%	0	0.0%	0	0.0%	0	0.0%	0	0.0%	0	0.0%	0	0.0%	0	0.0%	1	50.0%
	4th	64	20	31.3%	8	12.5%	0	0.0%	2	3.1%	0	0.0%	1	1.6%	0	0.0%	1	1.6%	7	10.9%	19	29.7%	0	0.0%	0	0.0%	0	0.0%	1	1.6%	0	0.0%	0	0.0%	5	7.8%		
	10th	20	4	20.0%	1	5.0%	0	0.0%	0	0.0%	0	0.0%	1	5.0%	0	0.0%	0	0.0%	5	25.0%	9	45.0%	0	0.0%	0	0.0%	0	0.0%	0	0.0%	0	0.0%	0	0.0%	0	0.0%	0	0.0%
	11th	11	0	0.0%	1	9.1%	0	0.0%	0	0.0%	0	0.0%	0	0.0%	0	0.0%	0	0.0%	3	27.3%	3	27.3%	0	0.0%	0	0.0%	0	0.0%	0	0.0%	0	0.0%	0	0.0%	4	36.4%		
	12th	1	1	100.0%	0	0.0%	0	0.0%	0	0.0%	0	0.0%	0	0.0%	0	0.0%	0	0.0%	0	0.0%	0	0.0%	0	0.0%	0	0.0%	0	0.0%	0	0.0%	0	0.0%	0	0.0%	0	0.0%		
	15th	3	1	33.3%	0	0.0%	0	0.0%	0	0.0%	0	0.0%	0	0.0%	0	0.0%	0	0.0%	0	0.0%	0	0%	0	0.0%	0	0.0%	0	0.0%	0	0.0%	0	0.0%	0	0.0%	2	66.7%		
	16th	1	0	0.0%	0	0.0%	0	0.0%	0	0.0%	0	0.0%	0	0.0%	0	0.0%	0	0.0%	0	0.0%	0	0%	0	0.0%	0	0.0%	0	0.0%	0	0.0%	0	0.0%	0	0.0%	1	100.0%		
Southern Total		102	26	25%	10	10%	0	0.0%	2	2.0%	0	0.0%	2	2.0%	0	0.0%	1	1.0%	15	15%	32	31%	0	0.0%	0	0.0%	0	0.0%	0	0.0%	0	0.0%	1	1.0%	0	0.0%	13	13%
Western Region																																						
	6th	6	2	33.3%	0	0.0%	1	16.7%	0	0.0%	0	0.0%	0	0.0%	0	0.0%	0	0.0%	0	0.0%	1	16.7%	0	0.0%	0	0.0%	0	0.0%	0	0.0%	0	0.0%	0	0.0%	0	0.0%	2	33%
	7th	15	7	46.7%	1	6.7%	0	0.0%	0	0.0%	0	0.0%	5	33.3%	0	0.0%	0	0.0%	1	6.7%	1	6.7%	0	0.0%	0	0.0%	0	0.0%	0	0.0%	0	0.0%	0	0.0%	0	0.0%	0	0.0%
	9th	3	1	33.3%	0	0.0%	0	0.0%	0	0.0%	0	0.0%	0	0.0%	0	0.0%	0	0.0%	0	0.0%	0	0.0%	0	0.0%	0	0.0%	0	0.0%	0	0.0%	0	0.0%	0	0.0%	2	66.7%		
	14th	1	1	100.0%	0	0.0%	0	0.0%	0	0.0%	0	0.0%	0	0.0%	0	0.0%	0	0.0%	0	0.0%	0	0.0%	0	0.0%	0	0.0%	0	0.0%	0	0.0%	0	0.0%	0	0.0%	0	0.0%		
	21st	18	9	50.0%	3	16.7%	1	5.6%	0	0.0%	0	0.0%	0	0.0%	0	0.0%	0	0.0%	2	11.1%	3	16.7%	0	0.0%	0	0.0%	0	0.0%	0	0.0%	0	0.0%	0	0.0%	0	0.0%		
	22nd	0	0	0.0%	0	0.0%	0	0.0%	0	0.0%	0	0.0%	0	0.0%	0	0.0%	0	0.0%	0	0.0%	0	0.0%	0	0.0%	0	0.0%	0	0.0%	0	0.0%	0	0.0%	0	0.0%	0	0.0%		
Western Total		43	20	47%	4	9.3%	2	4.7%	0	0.0%	0	0.0%	5	11.6%	0	0.0%	0	0.0%	3	7.0%	5	12%	0	0.0%	0	0.0%	0	0.0%	0	0.0%	0	0.0%	0	0.0%	4	9%		
Individual RD Totals		494	118	24%	52	11%	18	3.6%	2	0.4%	0	0.0%	18	3.6%	0	0.0%	1	0.2%	42	9%	115	23%	2	0.4%	0	0.0%	0	0.0%	0	0.0%	0	0.0%	1	0.2%	0	0.0%	125	25%
Statewide Totals		494	170	34.4%	20	4.0%	19	3.8%	157	31.8%	2	0.4%	1	0.2%	42	8.5%	115	23.3%	2	0.4%	0	0.0%	0	0.0%	0	0.0%	1	0.2%	0	0.0%	125	25.3%						

Central Region

SB94 Reason Detained by Judicial District

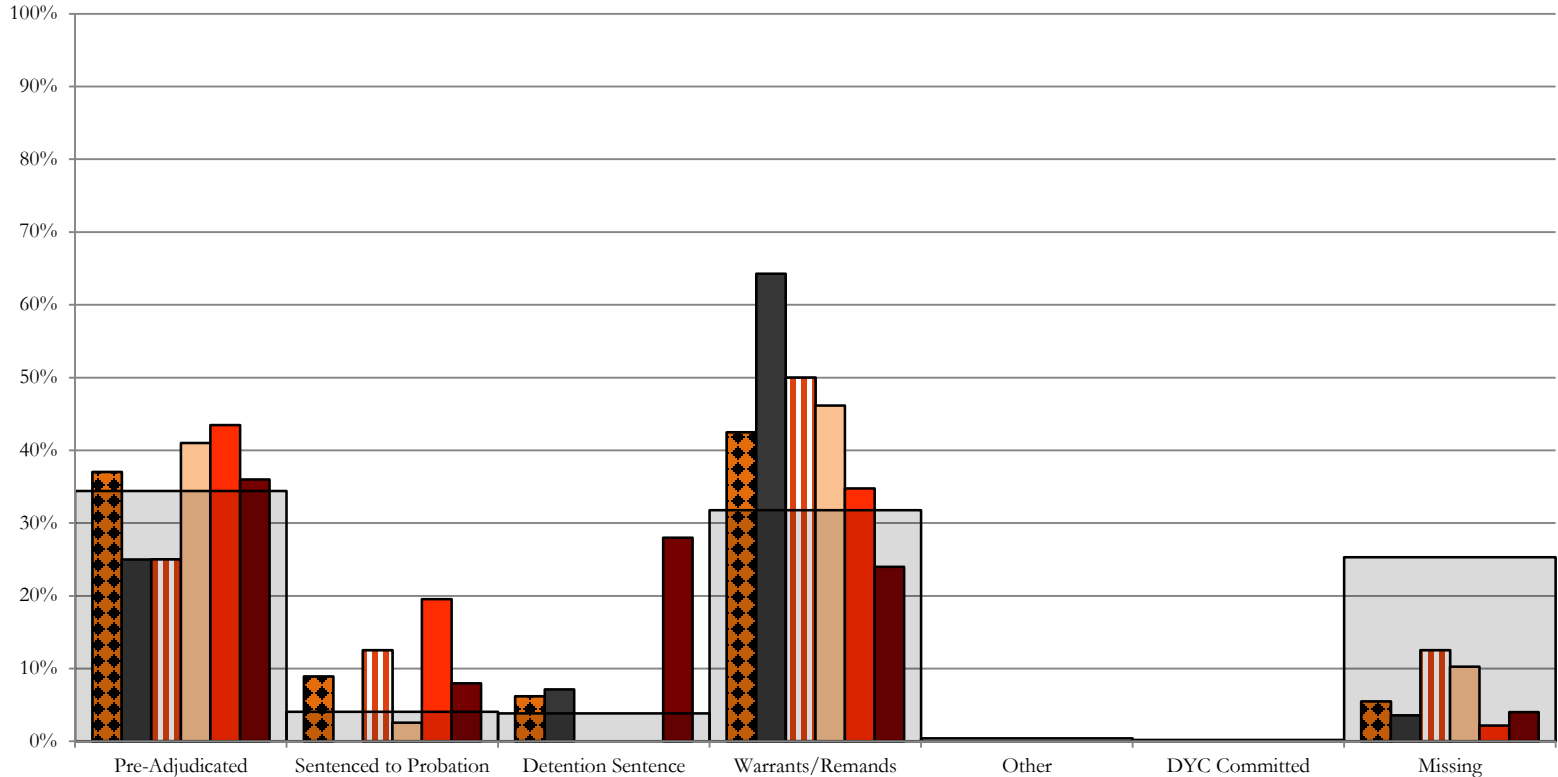
July 2016 New Admits



- CENTRAL REGION, 203 New Admits
- 1st JD, 49 New Admits
- 5th JD, 3 New Admits
- 2nd JD, 76 New Admits
- 18th JD, 75 New Admits
- STATEWIDE, 494 New Admits

Northeast Region

SB94 Reason Detained by Judicial District July 2016 New Admits



■ NORTHEAST REGION, 146 New Admits

■ 8th JD, 28 New Admits

■ 13th JD, 8 New Admits

■ 17th JD, 39 New Admits

■ 19th JD, 46 New Admits

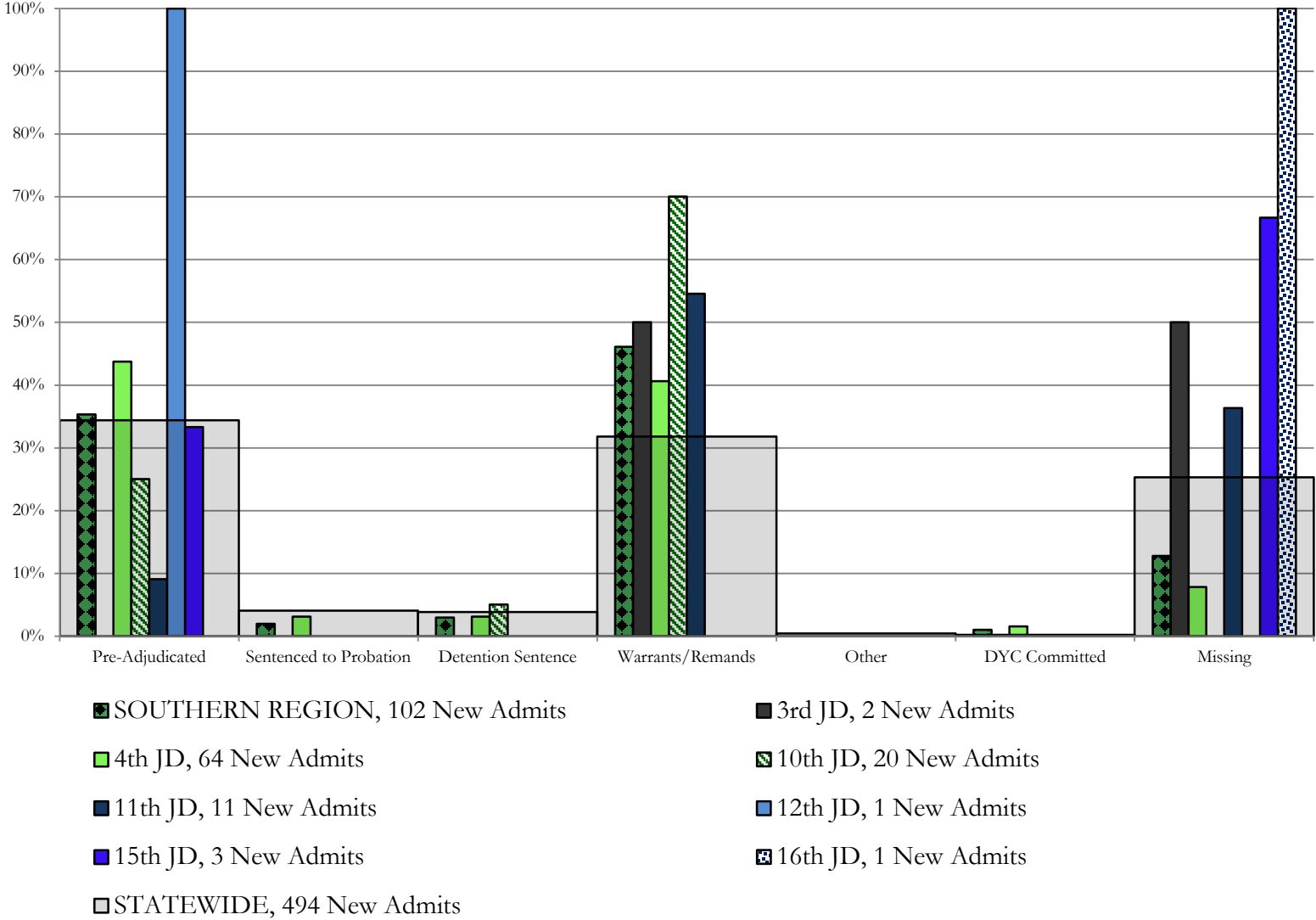
■ 20th JD, 25 New Admits

■ STATEWIDE, 494 New Admits

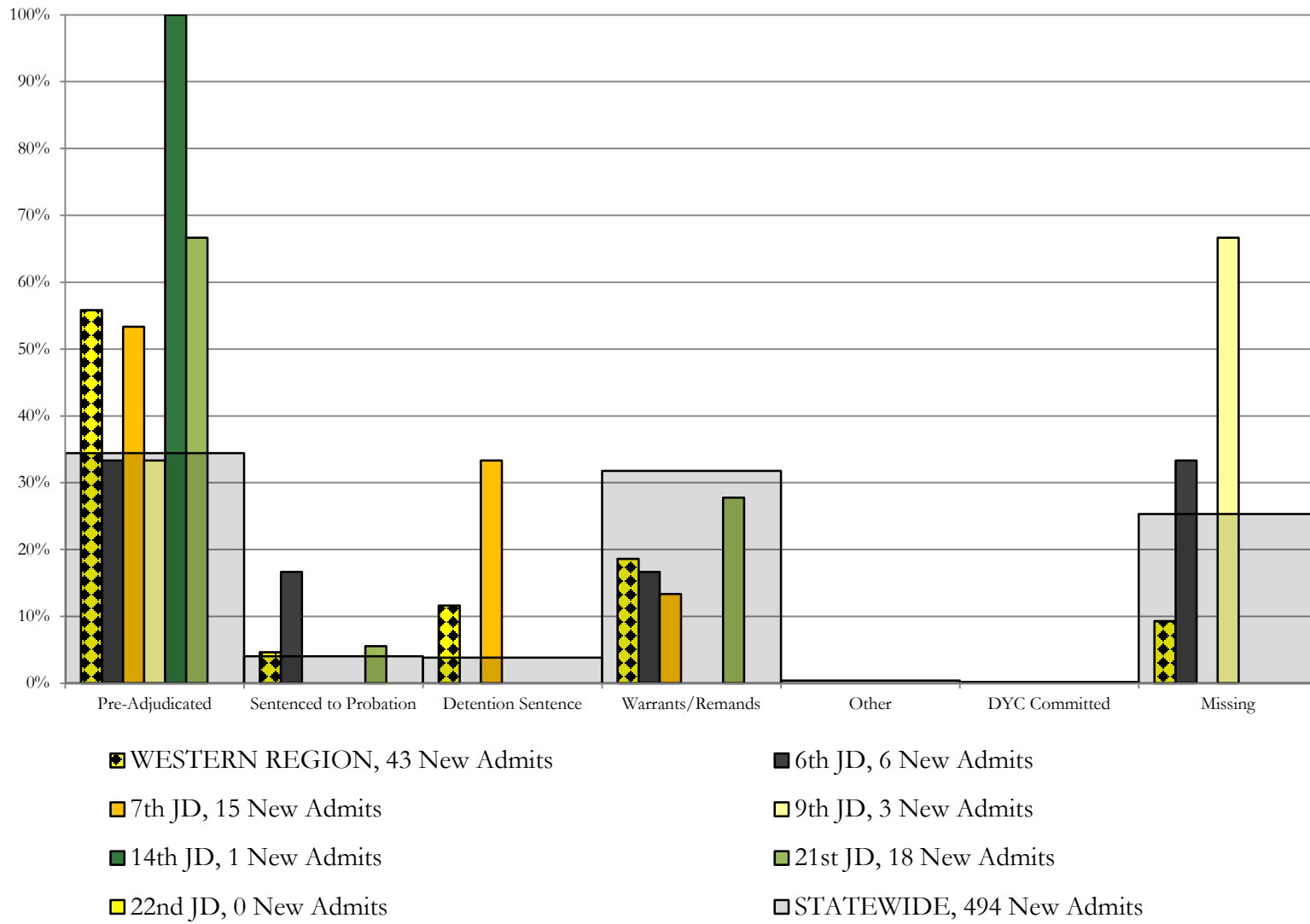
Southern Region

SB94 Reason Detained by Judicial District

July 2016 New Admits



Western Region SB94 Reason Detained by Judicial District July 2016 New Admits



July 2016 SB94 Supplemental Report

DYC Detention Maximum Youth Served by Judicial District¹

Region	JD	Detention Capacity	Detention ADP		Maximum Youth Served on a Single Day ^{2,3}			
			July 2016	YTD	July 2016		YTD	
					Number of Youth	% of Detention Capacity	Number of Youth	% of Detention Capacity
<i>Central Region</i>								
	1st	37	21.0	21.0	30	81.1%	30	81.1%
	2nd	64	51.8	51.8	60	93.8%	60	93.8%
	5th	4	1.4	1.4	2	50.0%	2	50.0%
	18th	61	37.2	37.2	46	75.4%	46	75.4%
Central Region		166	111.3	111.3	123	74.1%	123	74.1%
<i>Northeast Region</i>								
	8th	21	12.9	12.9	19	90.5%	19	90.5%
	13th	5	2.6	2.6	5	100.0%	5	100.0%
	17th	30	19.8	19.8	23	76.7%	23	76.7%
	19th	25	19.8	19.8	26	104.0%	26	104.0%
	20th	13	5.1	5.1	8	61.5%	8	61.5%
Northeast Region		94	60.1	60.1	71	75.5%	71	75.5%
<i>Southern Region</i>								
	3rd	2	0.5	0.5	1	50.0%	1	50.0%
	4th	51	46.2	46.2	51	100.0%	51	100.0%
	10th	13	9.9	9.9	15	115.4%	15	115.4%
	11th	8	1.3	1.3	3	37.5%	3	37.5%
	12th	4	2.8	2.8	3	75.0%	3	75.0%
	15th	2	4.0	4.0	6	300.0%	6	300.0%
	16th	3	0.4	0.4	1	33.3%	1	33.3%
Southern Region		83	65.2	65.2	71	85.5%	71	85.5%
<i>Western Region</i>								
	6th	5	2.0	2.0	4	80.0%	4	80.0%
	7th	7	4.9	4.9	9	128.6%	9	128.6%
	9th	6	2.5	2.5	4	66.7%	4	66.7%
	14th	3	0.1	0.1	1	33.3%	1	33.3%
	21st	14	6.9	6.9	13	92.9%	13	92.9%
	22nd	4	0.0	0.0	1	25.0%	1	25.0%
Western Region		39	16.4	16.4	24	61.5%	24	61.5%
<i>Missing JD or Multiple JDs</i>			1.3	1.3				
Statewide		382	254.3	254.3	272	71.2%	272	71.2%

¹ Maximum youth served is the highest number of youth in detention on a single day during the month or fiscal year.

² Regional figures are not the sum of judicial districts, but represent the maximum count on one day for the entire region.

³ State figures are not the sum of regional figures, but represent the maximum count on one day for the entire state.

July 2016 SB94 Supplemental Report

SB94 Community ADP by Judicial District

Region	JD	Committed		Diversion		ICJ		Municipal		Pre-Adjudicated		Sentenced		VCO		Total	
		July	YTD	July	YTD	July	YTD	July	YTD	July	YTD	July	YTD	July	YTD	July	YTD
<i>Central Region</i>																	
	1st	0.0	0.0	0.0	0.0	0.0	0.0	13.0	13.0	292.9	292.9	18.6	18.6	0.0	0.0	324.4	324.4
	2nd	6.3	6.3	0.0	0.0	0.0	0.0	0.0	0.0	317.0	317.0	77.5	77.5	2.0	2.0	402.9	402.9
	5th	0.0	0.0	11.0	11.0	0.0	0.0	0.0	0.0	18.0	18.0	29.6	29.6	0.0	0.0	58.6	58.6
	18th	1.2	1.2	5.0	5.0	0.1	0.1	0.0	0.0	312.0	312.0	54.1	54.1	9.0	9.0	381.4	381.4
Central Total		7.6	7.6	16.0	16.0	0.1	0.1	13.0	13.0	939.9	939.9	179.8	179.8	11.0	11.0	1167.4	1167.4
<i>Northeast Region</i>																	
	8th	0.0	0.0	3.0	3.0	0.0	0.0	0.0	0.0	50.3	50.3	44.2	44.2	0.0	0.0	97.4	97.4
	13th	0.0	0.0	0.0	0.0	0.0	0.0	0.3	0.3	11.5	11.5	9.0	9.0	3.0	3.0	23.8	23.8
	17th	2.9	2.9	0.0	0.0	0.0	0.0	1.0	1.0	173.3	173.3	40.3	40.3	0.0	0.0	217.5	217.5
	19th	1.0	1.0	0.0	0.0	0.0	0.0	0.0	0.0	58.3	58.3	47.8	47.8	1.0	1.0	108.1	108.1
	20th	2.0	2.0	6.4	6.4	0.0	0.0	0.0	0.0	84.9	84.9	52.2	52.2	0.0	0.0	145.6	145.6
Northeast Total		5.9	5.9	9.4	9.4	0.0	0.0	1.3	1.3	378.2	378.2	193.5	193.5	4.0	4.0	592.4	592.4
<i>Southern Region</i>																	
	3rd	0.0	0.0	0.0	0.0	0.0	0.0	0.0	0.0	11.0	11.0	8.0	8.0	1.0	1.0	20.0	20.0
	4th	3.0	3.0	0.0	0.0	0.0	0.0	77.5	77.5	245.2	245.2	137.1	137.1	2.0	2.0	464.8	464.8
	10th	1.2	1.2	0.0	0.0	0.0	0.0	83.4	83.4	23.5	23.5	18.2	18.2	5.0	5.0	131.3	131.3
	11th	0.0	0.0	0.0	0.0	0.0	0.0	0.0	0.0	19.0	19.0	35.9	35.9	7.0	7.0	61.9	61.9
	12th	0.0	0.0	0.0	0.0	0.0	0.0	0.0	0.0	6.0	6.0	0.1	0.1	0.0	0.0	6.1	6.1
	15th	0.0	0.0	0.0	0.0	0.0	0.0	0.0	0.0	5.3	5.3	9.8	9.8	0.0	0.0	15.2	15.2
	16th	0.0	0.0	0.0	0.0	0.0	0.0	0.0	0.0	2.0	2.0	16.0	16.0	21.0	21.0	39.0	39.0
Southern Total		4.2	4.2	0.0	0.0	0.0	0.0	160.9	160.9	312.0	312.0	225.2	225.2	36.0	36.0	738.3	738.3
<i>Western Region</i>																	
	6th	0.0	0.0	1.0	1.0	0.0	0.0	0.0	0.0	14.8	14.8	2.3	2.3	1.0	1.0	19.1	19.1
	7th	1.0	1.0	6.0	6.0	0.0	0.0	0.0	0.0	11.6	11.6	18.0	18.0	0.0	0.0	36.6	36.6
	9th	0.0	0.0	0.0	0.0	0.0	0.0	0.0	0.0	6.9	6.9	7.8	7.8	0.0	0.0	14.7	14.7
	14th	0.0	0.0	29.0	29.0	0.0	0.0	0.0	0.0	2.9	2.9	1.3	1.3	0.0	0.0	33.2	33.2
	21st	0.0	0.0	0.4	0.4	0.0	0.0	4.0	4.0	32.9	32.9	11.1	11.1	0.0	0.0	48.4	48.4
	22nd	0.0	0.0	0.0	0.0	0.0	0.0	0.0	0.0	4.3	4.3	2.0	2.0	0.0	0.0	6.3	6.3
Western Total		1.0	1.0	36.4	36.4	0.0	0.0	4.0	4.0	73.3	73.3	42.5	42.5	1.0	1.0	158.2	158.2
Statewide Total		18.6	18.6	61.8	61.8	0.1	0.1	179.3	179.3	1703.5	1703.5	641.0	641.0	52.1	52.1	2656.4	2656.4