

June 2016
FY 2015-2016
SB94 JDSAG SUPPLEMENTAL REPORT

Prepared by the Division of Youth Corrections (DYC)
Research and Evaluation Unit
July 25th, 2016



COLORADO

**Office of Children,
Youth & Families**

Division of Youth Corrections

June 2016 SB94 Supplemental Report

DYC Commitment ADP & New Commitments by Judicial District

Region	JD ¹	2016 Population Estimates ²	ADP ³		New Commitments		
			June 2016	YTD	June 2016	YTD	YTD Rate ⁴
<i>Central Region</i>							
	1st	55,832	71.2	70.0	9	50	9.0
	2nd	60,479	132.2	133.8	2	58	9.6
	5th	9,792	10.0	11.0	0	4	4.1
	18th	117,684	68.8	77.4	2	38	3.2
Central Total		243,787	282.2	292.2	13	150	6.2
<i>Northeast Region</i>							
	8th	31,855	41.4	42.6	0	30	9.4
	13th	8,467	7.2	8.4	0	4	4.7
	17th	69,058	70.5	79.9	6	41	5.9
	19th	35,275	52.3	54.4	5	34	9.6
	20th	32,027	11.1	13.5	0	6	1.9
Northeast Total		176,682	182.5	198.8	11	115	6.5
<i>Southern Region</i>							
	3rd	1,880	1.0	1.6	0	0	0.0
	4th	80,316	81.1	88.6	5	41	5.1
	10th	17,742	38.5	38.8	3	22	12.4
	11th	7,203	3.6	4.5	1	4	5.6
	12th	5,251	7.8	6.0	1	6	11.4
	15th	2,174	0.0	1.2	0	1	4.6
	16th	2,795	0.0	0.6	0	1	3.6
Southern Total		117,361	131.9	141.1	10	75	6.4
<i>Western Region</i>							
	6th	6,232	6.0	9.6	0	3	4.8
	7th	10,543	7.1	9.3	1	6	5.7
	9th	9,287	3.0	3.9	0	4	4.3
	14th	5,553	3.7	3.3	0	2	3.6
	21st	15,602	33.4	30.6	2	25	16.0
	22nd	3,036	2.0	4.0	0	1	3.3
Western Total		50,253	55.2	60.6	3	41	8.2
Statewide Total		588,083	651.8	692.6	37	381	6.5

¹ JD represents the judicial district in which the client was committed. Regional totals are a sum of their respective judicial districts. Regional totals reported here may differ slightly from those reported in the Monthly Population Report, where region is defined by active caseloads.

² Source: DOLA 2016 Estimates

³ Due to rounding, totals shown may not be an exact sum of the subtotals.

⁴ Per 10,000 youth in the population

June 2016 SB94 Supplemental Report

DYC Detention ADP and New Detention Admissions by Judicial District

Region	JD	2016 Population Estimates ¹	ADP		New Admits		
			June 2016	YTD	June 2016	YTD	YTD New Admit Rate ²
<i>Central Region</i>							
	1st	55,832	28.9	23.9	55	672	120.4
	2nd	60,479	56.3	53.8	89	1,122	185.5
	5th	9,792	2.3	2.6	3	45	46.0
	18th	117,684	37.3	40.3	89	1,031	87.6
Central Total		243,787	124.8	120.6	236	2,870	117.7
<i>Northeast Region</i>							
	8th	31,855	12.0	14.7	29	382	119.9
	13th	8,467	4.0	3.6	6	85	100.4
	17th	69,058	30.1	24.8	61	548	79.4
	19th	35,275	21.5	19.7	34	495	140.3
	20th	32,027	4.8	5.4	20	285	89.0
Northeast Total		176,682	72.4	68.1	150	1,795	101.6
<i>Southern Region</i>							
	3rd	1,880	0.9	1.3	1	18	95.7
	4th	80,316	41.3	41.6	61	784	97.6
	10th	17,742	14.0	12.4	27	378	213.1
	11th	7,203	3.0	2.9	10	129	179.1
	12th	5,251	1.7	2.1	1	54	102.8
	15th	2,174	2.1	1.0	4	22	101.2
	16th	2,795	0.1	0.5	1	17	60.8
Southern Total		117,361	63.0	61.8	105	1,402	119.5
<i>Western Region</i>							
	6th	6,232	1.3	1.4	4	46	73.8
	7th	10,543	4.4	4.0	4	60	56.9
	9th	9,287	3.5	4.3	6	61	65.7
	14th	5,553	0.0	0.9	0	23	41.4
	21st	15,602	12.7	11.3	13	231	148.1
	22nd	3,036	2.2	0.9	3	22	72.5
Western Total		50,253	24.1	23.0	30	443	88.2
<i>Missing JD or Multiple JDs</i>			<i>1.4</i>	<i>1.5</i>			
Statewide Total		588,083	285.6	275.0	521	6,510	110.7

¹ Source: DOLA 2016 Estimates

² Per 10,000 youth in the population

June 2016 SB94 Supplemental Report

DYC Detention LOS by Judicial District				
Region	JD	YTD Detention Releases	YTD LOS (days)	LOS (days) Compared to State AVG
<i>Central Region</i>				
	1st	665	13.6	-1.8
	2nd	1,124	16.4	1.0
	5th	49	22.3	6.9
	18th	1,035	13.7	-1.7
Central Total		2,873	14.9	-0.6
<i>Northeast Region</i>				
	8th	392	13.0	-2.4
	13th	86	15.3	-0.1
	17th	557	15.7	0.3
	19th	507	15.8	0.4
	20th	286	6.5	-9.0
Northeast Total		1,828	13.7	-1.7
<i>Southern Region</i>				
	3rd	18	25.7	10.3
	4th	773	18.8	3.4
	10th	382	11.3	-4.1
	11th	129	7.6	-7.8
	12th	53	13.3	-2.1
	15th	21	14.5	-1.0
	16th	18	10.3	-5.1
Southern Total		1,394	15.4	0.0
<i>Western Region</i>				
	6th	44	10.6	-4.9
	7th	58	16.7	1.3
	9th	59	24.5	9.1
	14th	22	15.0	-0.4
	21st	220	15.7	0.3
	22nd	22	15.4	-0.1
Western Total		425	16.5	1.0
Statewide Total		6,541	15.4	-

June 2016 SB 94 Supplemental Report

YTD DYC Detention ADP & Ethnicity by Judicial District

Region	JD	Anglo-American		African-American		Hispanic / Latino		Native-American		Asian-American		Other		TOTAL	
		ADP	%	ADP	%	ADP	%	ADP	%	ADP	%	ADP	%	ADP	%
Central															
	1st	12.0	50.1%	1.7	7.1%	8.8	36.6%	0.5	2.3%	0.6	2.6%	0.3	1.3%	23.9	100%
	2nd	5.6	10.4%	22.6	42.1%	24.7	46.0%	0.1	0.2%	0.5	0.8%	0.2	0.4%	53.8	100%
	5th	1.6	63.0%	0.1	4.1%	0.8	32.7%	0.0	0.0%	0.0	0.0%	0.0	0.3%	2.6	100%
	18th	14.9	37.1%	15.6	38.8%	8.5	21.1%	0.4	0.9%	0.1	0.2%	0.8	2.0%	40.3	100%
Central Total		34.2	40.1%	40.1	23.0%	42.8	34.1%	1.0	0.9%	1.1	0.9%	1.3	1.0%	120.6	100%
Northeast															
	8th	8.5	57.9%	1.0	6.6%	4.4	30.0%	0.05	0.3%	0.0	0.0%	0.8	5.1%	14.7	100%
	13th	1.4	39.9%	0.0	0.2%	2.0	55.9%	0.1	3.9%	0.0	0.0%	0.00	0.0%	3.6	100%
	17th	5.5	22.4%	4.4	17.6%	14.4	58.3%	0.0	0.1%	0.14	0.6%	0.2	1.0%	24.8	100%
	19th	7.2	36.8%	0.5	2.6%	11.3	57.2%	0.4	2.1%	0.0	0.0%	0.2	1.2%	19.7	100%
	20th	2.8	52.1%	0.3	6.1%	2.2	40.2%	0.1	1.0%	0.0	0.6%	0.0	0.0%	5.4	100%
Northeast Total		25.5	41.8%	6.2	6.6%	34.3	48.3%	0.7	1.5%	0.2	0.2%	1.2	1.5%	68.1	100%
Southern															
	3rd	0.8	61.0%	0.0	0.0%	0.5	39%	0.0	0.0%	0.0	0.0%	0.0	0.0%	1.3	100%
	4th	15.4	37.0%	13.5	32.5%	12.0	28.8%	0.3	0.8%	0.2	0.4%	0.2	0.5%	41.6	100%
	10th	2.5	19.9%	0.9	7.5%	8.8	71.1%	0.0	0.1%	0.0	0.0%	0.2	1.4%	12.4	100%
	11th	2.1	73.0%	0.2	7.8%	0.5	17.4%	0.05	1.8%	0.0	0.1%	0.0	0.0%	2.9	100%
	12th	0.5	23.3%	0.01	0.3%	1.4	69.3%	0.1	5.3%	0.0	0.0%	0.0	1.8%	2.1	100%
	15th	0.5	46.0%	0.2	18.4%	0.3	25.7%	0.10	9.9%	0.0	0.0%	0.0	0.0%	1.0	100%
	16th	0.2	33.6%	0.0	0.0%	0.3	65.7%	0.0	0.0%	0.0	0.0%	0.0	0.7%	0.5	100%
Southern Total		21.8	42.0%	14.9	9.5%	23.8	45.3%	0.6	2.6%	0.2	0.1%	0.4	0.6%	61.8	100%
Western															
	6th	0.8	56.2%	0.0	0.0%	0.4	27.2%	0.2	15.2%	0.0	0.0%	0.0	1.5%	1.4	100%
	7th	3.0	74.2%	0.0	0.0%	0.7	16.9%	0.4	8.9%	0.0	0.0%	0.0	0.0%	4.0	100%
	9th	2.7	61.4%	0.0	0.1%	1.7	38.1%	0.0	0.4%	0.0	0.0%	0.0	0.0%	4.3	100%
	14th	0.9	91%	0.0	1.9%	0.07	7.1%	0.0	0.0%	0.0	0.0%	0.0	0.0%	0.9	100%
	21st	8.1	71.4%	0.55	4.9%	2.0	17.5%	0.00	0.0%	0.4	3.3%	0.3	2.8%	11.3	100%
	22nd	0.5	51.4%	0.4	43.7%	0.0	2.6%	0.0	2.3%	0.0	0.0%	0.0	0.0%	0.9	100%
Western Total		15.9	67.6%	1.0	8.4%	4.8	18.3%	0.6	4.5%	0.4	0.5%	0.3	0.7%	23.0	100%
	Missing JD Data	0.3		0.4		0.7		0.0		0.0		0.0		1.5	
Statewide Total		97.8	35.6%	62.5	22.7%	106.5	38.7%	3.0	1.1%	1.9	0.7%	3.3	1.2%	275.0	100%

June 2016 SB94 JDSAG Supplemental Report

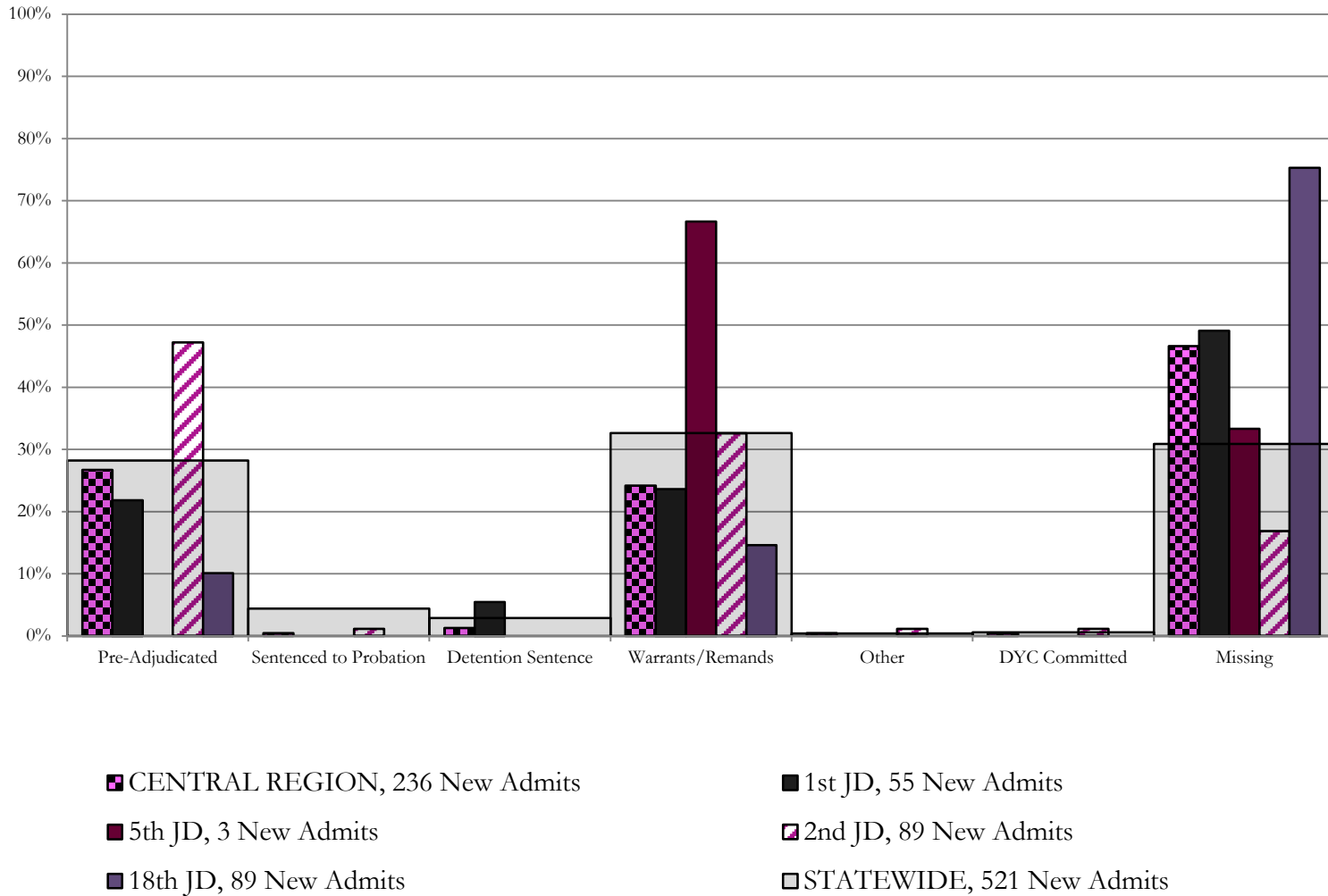
SB94 Reason Detained (RD) by Judicial District

Region	JD	Monthly New Admits	Pre-Adjudicated				Sentenced to Probation				Detention Sentence								Warrants/Remands				Other						DYC Committed		Missing							
			Felony		Misdemeanor		Technical Violator		New Charges		Probation Sentence		Detention Sentence		Valid Court Order (VCO) Truancy		Awaiting DSS (Social Services) Placement		Failure to Appear (FTA)		Failure to Comply (FTC)		Interstate Compact on Juveniles (ICJ) Hold		Immigration Hold		No Bond Hold		Out-of-Country Warrant		Institutional		Parole		Missing			
			#	%	#	%	#	%	#	%	#	%	#	%	#	%	#	%	#	%	#	%	#	%	#	%	#	%	#	%	#	%	#	%	#	%		
<i>Central Region</i>																																						
	1st	55	8	14.5%	4	7.3%	0	0.0%	0	0.0%	0	0.0%	3	5.5%	0	0.0%	0	0.0%	2	3.6%	11	20.0%	0	0.0%	0	0.0%	0	0.0%	0	0.0%	0	0.0%	0	0.0%	0	0.0%	27	49.1%
	2nd	89	37	41.6%	5	5.6%	1	1.1%	0	0.0%	0	0.0%	0	0.0%	0	0.0%	0	0.0%	10	11.2%	19	21.3%	1	1.1%	0	0.0%	0	0.0%	0	0.0%	0	0.0%	0	0.0%	1	1.1%	15	16.9%
	5th	3	0	0.0%	0	0.0%	0	0.0%	0	0.0%	0	0.0%	0	0.0%	0	0.0%	0	0.0%	1	33.3%	1	33.3%	0	0.0%	0	0.0%	0	0.0%	0	0.0%	0	0.0%	0	0.0%	0	0.0%	1	33.3%
	18th	89	4	4.5%	5	5.6%	0	0.0%	0	0.0%	0	0.0%	0	0.0%	0	0.0%	0	0.0%	3	3.4%	10	11.2%	0	0.0%	0	0.0%	0	0.0%	0	0.0%	0	0.0%	0	0.0%	0	0.0%	67	75.3%
Central Total		236	49	21%	14	6%	1	0.4%	0	0.0%	0	0.0%	3	1.3%	0	0.0%	0	0.0%	16	7%	41	17%	1	0.4%	0	0.0%	0	0.0%	0	0.0%	0	0.0%	1	0.4%	110	46.6%		
<i>Northeast Region</i>																																						
	8th	29	5	17.2%	5	17.2%	0	0.0%	0	0.0%	0	0.0%	2	6.9%	0	0.0%	0	0.0%	1	3.4%	14	48.3%	0	0.0%	0	0.0%	0	0.0%	0	0.0%	0	0.0%	0	0.0%	0	0.0%	2	6.9%
	13th	6	2	33.3%	1	16.7%	1	16.7%	0	0.0%	0	0.0%	0	0.0%	0	0.0%	0	0.0%	0	0.0%	2	33.3%	0	0.0%	0	0.0%	0	0.0%	0	0.0%	0	0.0%	0	0.0%	0	0.0%	0	0.0%
	17th	61	15	24.6%	3	4.9%	0	0.0%	1	1.6%	0	0.0%	0	0.0%	0	0.0%	0	0.0%	8	13.1%	12	19.7%	0	0.0%	0	0.0%	0	0.0%	0	0.0%	0	0.0%	0	0.0%	0	0.0%	22	36.1%
	19th	34	7	20.6%	2	5.9%	13	38.2%	0	0.0%	0	0.0%	1	2.9%	0	0.0%	0	0.0%	2	5.9%	9	26.5%	0	0.0%	0	0.0%	0	0.0%	0	0.0%	0	0.0%	0	0.0%	0	0.0%	0	0.0%
	20th	20	4	20.0%	1	5.0%	0	0.0%	0	0.0%	0	0.0%	3	15.0%	0	0.0%	0	0.0%	1	5.0%	1	5.0%	0	0.0%	0	0.0%	0	0.0%	0	0.0%	0	0.0%	0	0.0%	0	0.0%	10	50.0%
Northeast Total		150	33	22%	12	8%	14	9.3%	1	0.7%	0	0.0%	6	4.0%	0	0.0%	0	0.0%	12	8.0%	38	25%	0	0.0%	0	0.0%	0	0.0%	0	0.0%	0	0.0%	0	0.0%	34	23%		
<i>Southern Region</i>																																						
	3rd	1	0	0.0%	0	0.0%	0	0.0%	0	0.0%	0	0.0%	0	0.0%	0	0.0%	0	0.0%	0	0.0%	1	100.0%	0	0.0%	0	0.0%	0	0.0%	0	0.0%	0	0.0%	0	0.0%	0	0.0%	0	0.0%
	4th	61	22	36.1%	3	4.9%	0	0.0%	2	3.3%	0	0.0%	1	1.6%	0	0.0%	0	0.0%	5	8.2%	22	36.1%	0	0.0%	0	0.0%	0	0.0%	0	0.0%	2	3.3%	0	0.0%	4	6.6%		
	10th	27	3	11.1%	2	7.4%	0	0.0%	0	0.0%	0	0.0%	2	7.4%	0	0.0%	0	0.0%	4	14.8%	13	48.1%	0	0.0%	0	0.0%	0	0.0%	0	0.0%	0	0.0%	0	0.0%	0	0.0%	3	11.1%
	11th	10	1	10.0%	0	0.0%	0	0.0%	0	0.0%	0	0.0%	0	0.0%	0	0.0%	0	0.0%	1	10.0%	4	40.0%	0	0.0%	0	0.0%	0	0.0%	0	0.0%	0	0.0%	0	0.0%	4	40.0%		
	12th	1	0	0.0%	0	0.0%	0	0.0%	0	0.0%	0	0.0%	0	0.0%	0	0.0%	0	0.0%	0	0.0%	1	100.0%	0	0.0%	0	0.0%	0	0.0%	0	0.0%	0	0.0%	0	0.0%	0	0.0%		
	15th	4	0	0.0%	1	25.0%	0	0.0%	0	0.0%	0	0.0%	0	0.0%	0	0.0%	0	0.0%	1	25.0%	1	25.0%	0	0.0%	0	0.0%	0	0.0%	0	0.0%	0	0.0%	0	0.0%	1	25.0%		
	16th	1	0	0.0%	0	0.0%	0	0.0%	0	0.0%	0	0.0%	1	100.0%	0	0.0%	0	0.0%	0	0.0%	0	0.0%	0	0.0%	0	0.0%	0	0.0%	0	0.0%	0	0.0%	0	0.0%	0	0.0%		
Southern Total		105	26	25%	6	6%	0	0.0%	2	1.9%	0	0.0%	4	3.8%	0	0.0%	0	0.0%	11	10%	42	40%	0	0.0%	0	0.0%	0	0.0%	0	0.0%	2	1.9%	0	0.0%	12	11%		
<i>Western Region</i>																																						
	6th	4	1	25.0%	1	25.0%	1	25.0%	0	0.0%	0	0.0%	0	0.0%	0	0.0%	0	0.0%	0	0.0%	0	0.0%	0	0.0%	0	0.0%	0	0.0%	0	0.0%	0	0.0%	0	0.0%	1	25%		
	7th	4	0	0.0%	0	0.0%	0	0.0%	1	25.0%	0	0.0%	0	0.0%	0	0.0%	0	0.0%	1	25.0%	0	0.0%	0	0.0%	0	0.0%	0	0.0%	0	0.0%	0	0.0%	0	0.0%	2	50.0%		
	9th	6	2	33.3%	1	16.7%	3	50.0%	0	0.0%	0	0.0%	0	0.0%	0	0.0%	0	0.0%	0	0.0%	0	0.0%	0	0.0%	0	0.0%	0	0.0%	0	0.0%	0	0.0%	0	0.0%	0	0.0%		
	14th	0	0	0.0%	0	0.0%	0	0.0%	0	0.0%	0	0.0%	0	0.0%	0	0.0%	0	0.0%	0	0.0%	0	0.0%	0	0.0%	0	0.0%	0	0.0%	0	0.0%	0	0.0%	0	0.0%	0	0.0%		
	21st	13	2	15.4%	0	0.0%	0	0.0%	0	0.0%	0	0.0%	2	15.4%	0	0.0%	0	0.0%	0	0.0%	7	53.8%	1	7.7%	0	0.0%	0	0.0%	0	0.0%	0	0.0%	0	0.0%	1	7.7%		
	22nd	3	0	0.0%	0	0.0%	0	0.0%	0	0.0%	0	0.0%	0	0.0%	0	0.0%	0	0.0%	0	0.0%	2	66.7%	0	0.0%	0	0.0%	0	0.0%	0	0.0%	0	0.0%	0	0.0%	0	0.0%		
Western Total		30	5	17%	2	6.7%	4	13.3%	1	3.3%	0	0.0%	2	6.7%	0	0.0%	0	0.0%	1	3.3%	9	30%	1	3.3%	0	0.0%	0	0.0%	0	0.0%	0	0.0%	5	17%				
Individual RD Totals		521	113	22%	34	7%	19	3.6%	4	0.8%	0	0.0%	15	2.9%	0	0.0%	0	0.0%	40	8%	130	25%	2	0.4%	0	0.0%	0	0.0%	0	0.0%	2	0.4%	1	0.2%	161	31%		
Statewide Totals		521	147	28.2%	23	4.4%					15	2.9%						170	32.6%		2		0.4%			3	0.6%			161	31%							

Central Region

SB94 Reason Detained by Judicial District

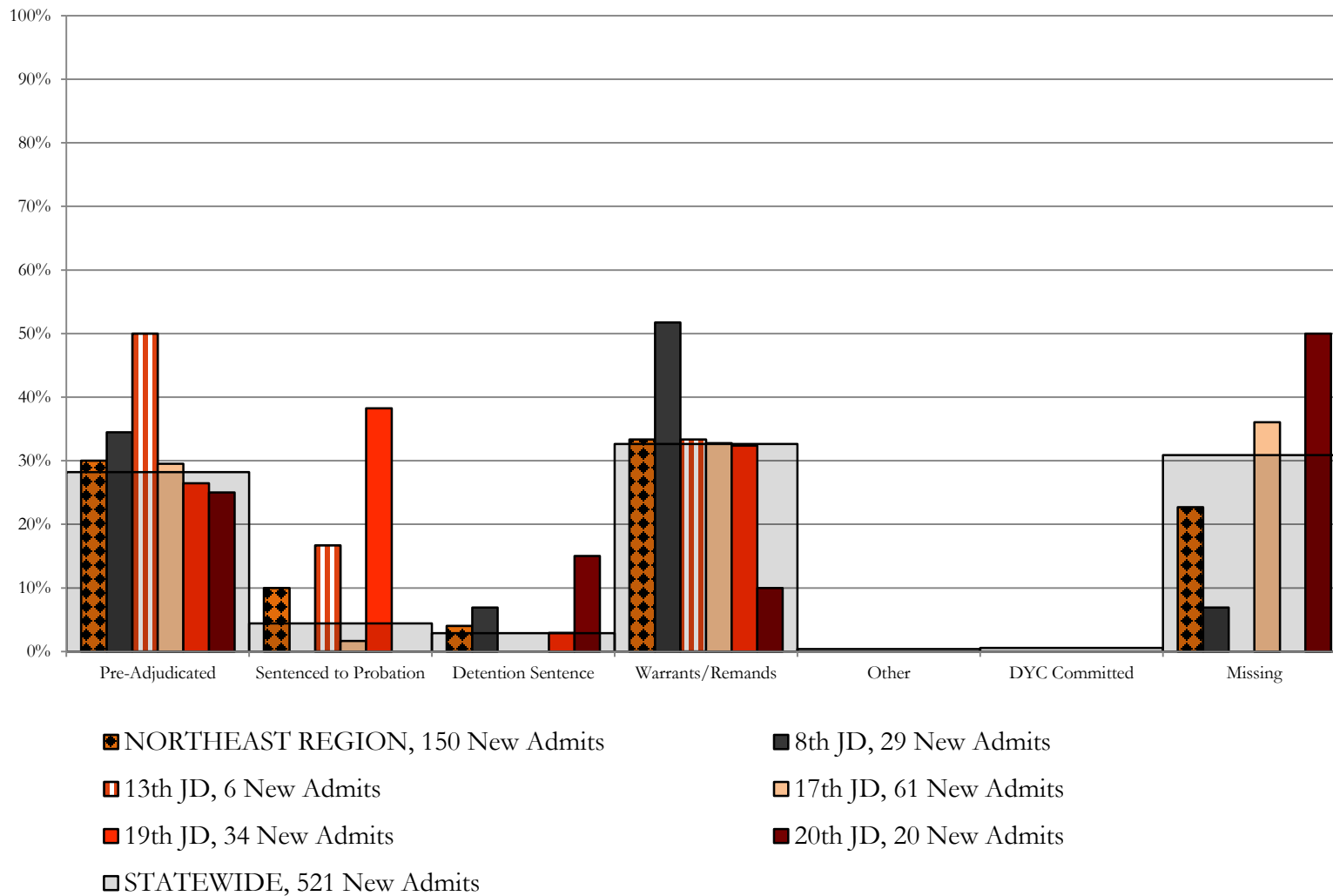
June 2016 New Admits



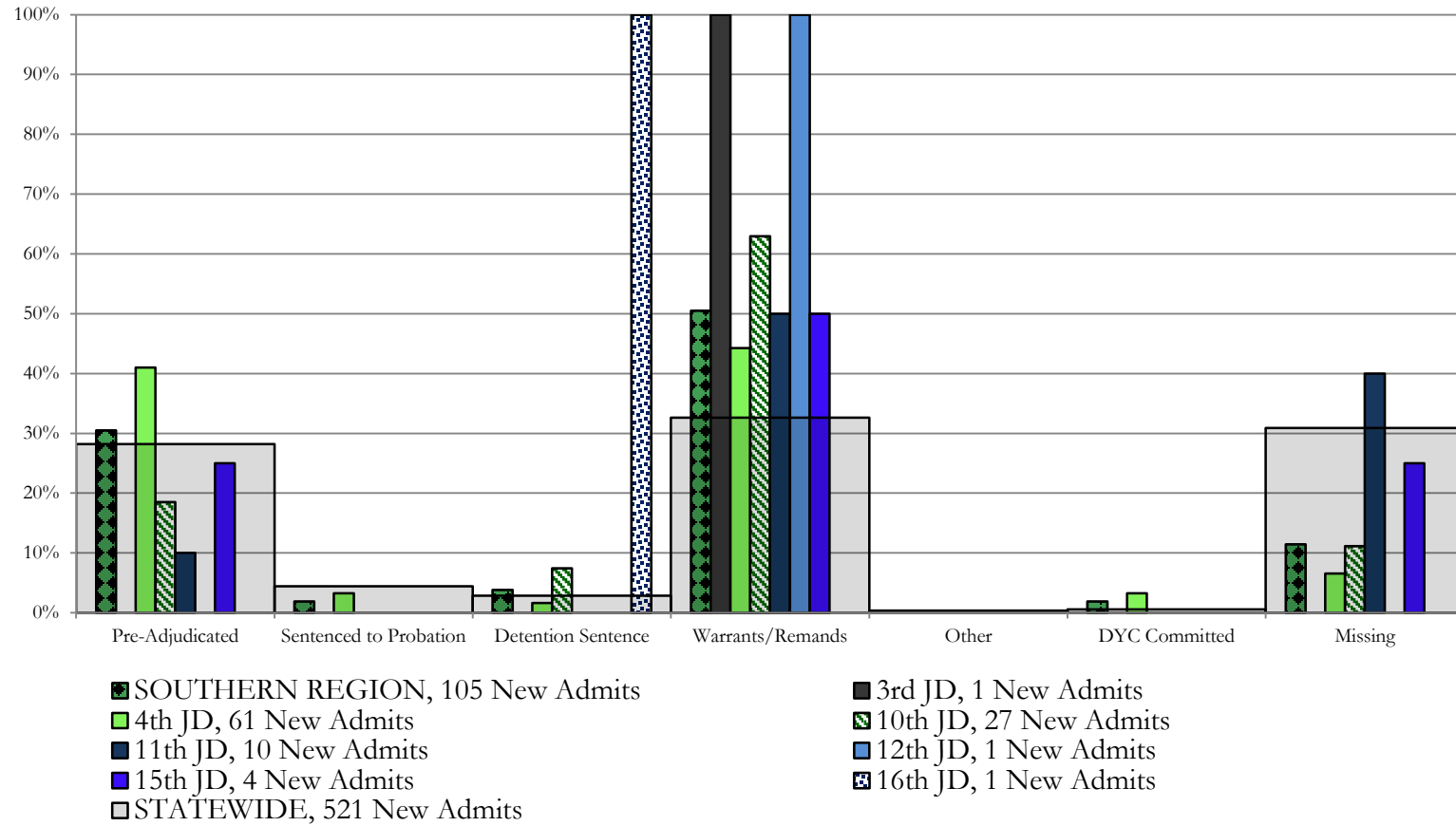
Northeast Region

SB94 Reason Detained by Judicial District

June 2016 New Admits



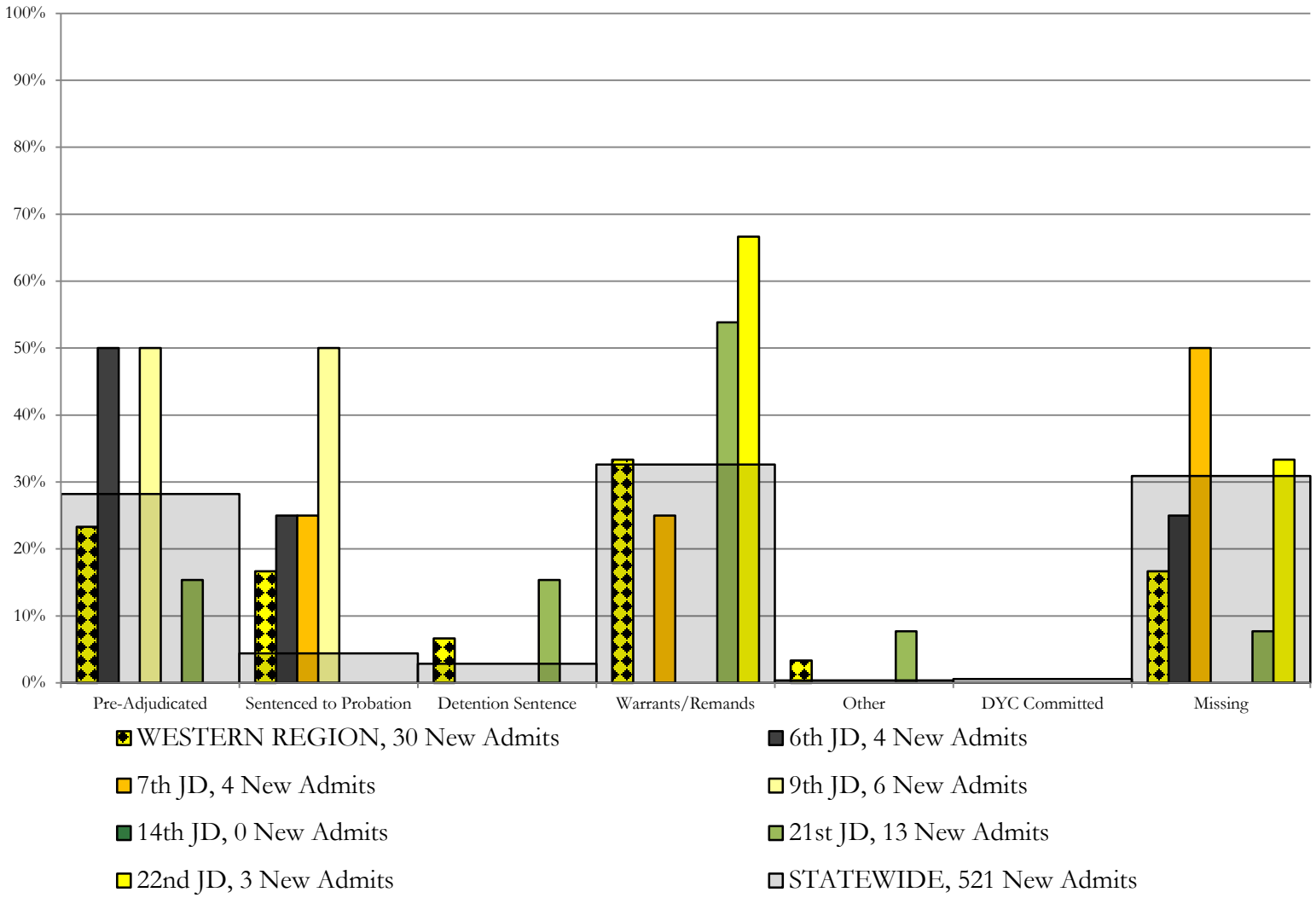
Southern Region SB94 Reason Detained by Judicial District June 2016 New Admits



Western Region

SB94 Reason Detained by Judicial District

June 2016 New Admits



June 2016 SB94 Supplemental Report

DYC Detention Maximum Youth Served by Judicial District¹

Region	JD	Detention Capacity	Detention ADP		Maximum Youth Served on a Single Day ^{2,3}			
			June 2016	YTD	June 2016		YTD	
					Number of Youth	% of Detention Capacity	Number of Youth	% of Detention Capacity
<i>Central Region</i>								
	1st	37	28.9	23.9	36	97.3%	37	100.0%
	2nd	64	56.3	53.8	62	96.9%	66	103.1%
	5th	4	2.3	2.6	4	100.0%	6	150.0%
	18th	61	37.3	40.3	49	80.3%	58	95.1%
Central Region		166	124.8	120.6	143	86.1%	143	86.1%
<i>Northeast Region</i>								
	8th	21	12.0	14.7	15	71.4%	23	109.5%
	13th	5	4.0	3.6	7	140.0%	10	200.0%
	17th	30	30.1	24.8	38	126.7%	38	126.7%
	19th	25	21.5	19.7	28	112.0%	31	124.0%
	20th	13	4.8	5.4	8	61.5%	13	100.0%
Northeast Region		94	72.4	68.1	92	97.9%	95	101.1%
<i>Southern Region</i>								
	3rd	2	0.9	1.3	1	50.0%	3	150.0%
	4th	51	41.3	41.6	51	100.0%	54	105.9%
	10th	13	14.0	12.4	20	153.8%	21	161.5%
	11th	8	3.0	2.9	5	62.5%	8	100.0%
	12th	4	1.7	2.1	3	75.0%	5	125.0%
	15th	2	2.1	1.0	3	150.0%	4	200.0%
	16th	3	0.1	0.5	1	33.3%	2	66.7%
Southern Region		83	63.0	61.8	78	94.0%	79	95.2%
<i>Western Region</i>								
	6th	5	1.3	1.4	3	60.0%	4	80.0%
	7th	7	4.4	4.0	5	71.4%	8	114.3%
	9th	6	3.5	4.3	6	100.0%	10	166.7%
	14th	3	0.0	0.9	0	0.0%	4	133.3%
	21st	14	12.7	11.3	16	114.3%	19	135.7%
	22nd	4	2.2	0.9	3	75.0%	4	100.0%
Western Region		39	24.1	23.0	30	76.9%	30	76.9%
<i>Missing JD or Multiple JDs</i>			1.4	1.5				
Statewide		382	285.6	275.0	314	82.2%	315	82.5%

¹ Maximum youth served is the highest number of youth in detention on a single day during the month or fiscal year.

² Regional figures are not the sum of judicial districts, but represent the maximum count on one day for the entire region.

³ State figures are not the sum of regional figures, but represent the maximum count on one day for the entire state.

June 2016 SB94 Supplemental Report

SB94 Community ADP by Judicial District

Region	JD	Committed		Diversion		ICJ		Municipal		Pre-Adjudicated		Sentenced		VCO		Total	
		June	YTD	June	YTD	June	YTD	June	YTD	June	YTD	June	YTD	June	YTD	June	YTD
<i>Central Region</i>																	
	1st	1.0	0.6	1.0	0.5	0.0	0.0	15.4	15.7	320.5	266.6	26.9	23.5	0.0	0.0	364.8	307.0
	2nd	4.0	1.7	0.9	0.2	0.0	0.1	0.0	0.0	328.5	247.6	83.4	74.0	2.0	1.7	418.8	325.3
	5th	0.0	0.0	11.0	2.1	0.0	0.0	0.0	0.0	17.5	12.1	28.5	28.4	0.0	0.0	57.0	42.5
	18th	1.4	0.9	5.5	9.3	0.0	0.0	0.0	0.0	305.0	289.2	48.8	45.6	9.0	6.4	369.8	351.4
Central Total		6.4	3.2	18.5	12.1	0.0	0.1	15.4	15.7	971.6	815.5	187.5	171.5	11.0	8.0	1210.4	1026.2
<i>Northeast Region</i>																	
	8th	0.0	0.0	2.9	0.6	0.0	0.0	0.0	0.0	53.6	44.7	51.9	38.9	0.0	0.0	108.3	84.2
	13th	0.0	0.0	0.0	0.0	0.0	0.0	1.0	0.1	13.3	16.2	9.1	10.6	3.4	5.0	26.8	31.9
	17th	2.0	0.7	0.0	0.5	0.0	0.0	1.0	1.0	176.7	124.2	37.4	46.8	0.0	0.0	217.1	173.2
	19th	1.0	0.6	0.0	0.0	0.0	0.0	0.0	0.2	58.5	59.3	45.6	38.5	1.0	0.5	106.0	99.1
	20th	1.1	0.2	0.0	0.0	0.0	0.0	0.0	0.0	79.5	61.7	45.7	34.4	0.0	0.0	126.2	96.3
Northeast Total		4.0	1.5	2.9	1.1	0.0	0.0	2.0	1.4	381.5	306.1	189.6	169.3	4.4	5.5	584.4	484.8
<i>Southern Region</i>																	
	3rd	0.0	0.0	0.0	0.0	0.0	0.0	0.0	0.0	9.7	7.9	8.9	5.1	1.0	1.2	19.7	14.2
	4th	2.9	1.4	0.0	0.0	0.0	0.0	76.0	42.8	236.4	174.1	135.0	113.4	2.0	1.4	452.3	333.2
	10th	1.6	1.4	0.0	0.0	0.0	0.0	93.1	60.4	32.5	23.3	27.3	19.7	7.6	7.9	162.0	112.6
	11th	0.0	0.0	0.0	0.0	0.1	0.0	0.0	0.2	19.5	17.4	35.2	28.5	8.0	2.9	62.8	49.0
	12th	0.0	0.0	0.0	0.0	0.0	0.0	0.0	0.0	6.7	6.4	0.0	3.4	0.0	0.0	6.7	9.9
	15th	0.0	0.0	0.0	0.0	0.0	0.0	0.0	0.0	6.0	5.2	11.1	8.9	0.0	0.0	17.1	14.1
	16th	0.0	0.0	0.0	0.0	0.0	0.0	0.0	0.0	2.0	2.5	18.5	15.9	20.0	19.7	40.5	38.2
Southern Total		4.5	2.8	0.0	0.0	0.1	0.0	169.1	103.4	312.7	236.8	236.0	195.0	38.6	33.1	760.9	571.2
<i>Western Region</i>																	
	6th	0.0	0.0	1.1	0.5	0.0	0.0	0.2	0.6	12.2	10.9	2.0	1.5	1.0	1.0	16.5	14.5
	7th	0.1	0.0	6.0	4.7	0.0	0.0	0.0	0.7	8.8	10.7	20.4	17.9	0.0	0.6	35.3	34.6
	9th	0.0	0.0	0.0	0.1	0.0	0.0	0.0	0.0	10.3	11.4	11.3	7.8	0.0	0.0	21.6	19.3
	14th	0.0	0.0	30.0	22.6	0.0	0.1	0.0	0.0	2.9	4.2	2.0	1.0	0.0	0.0	34.9	27.9
	21st	0.0	0.0	0.0	0.2	0.0	0.0	5.8	2.1	31.0	38.6	23.1	19.9	0.0	0.0	59.8	60.7
	22nd	0.0	0.0	0.0	0.0	0.0	0.0	0.0	0.0	5.1	3.7	3.0	1.4	0.0	0.0	8.0	5.1
Western Total		0.1	0.0	37.1	28.0	0.0	0.1	6.0	3.5	70.2	79.6	61.7	49.5	1.0	1.6	176.1	162.3
Statewide Total		15.1	7.5	58.4	41.2	0.1	0.2	192.5	124.0	1736.1	1438.1	674.7	585.3	55.0	48.2	2731.9	2244.4