

May 2016
FY 2015-2016
SB94 JDSAG SUPPLEMENTAL REPORT

Prepared by the Division of Youth Corrections (DYC)
Research and Evaluation Unit
June 23rd, 2016



COLORADO

**Office of Children,
Youth & Families**

Division of Youth Corrections

May 2016 SB94 Supplemental Report

DYC Commitment ADP & New Commitments by Judicial District

Region	JD ¹	2016 Population Estimates ²	ADP ³		New Commitments		
			May 2016	YTD	May 2016	YTD	YTD Rate ⁴
<i>Central Region</i>							
	1st	55,832	70.4	69.9	3	40	7.2
	2nd	60,479	131.4	133.9	7	55	9.1
	5th	9,792	10.1	11.1	0	4	4.1
	18th	117,684	76.0	78.2	0	35	3.0
Central Total		243,787	287.9	293.0	10	134	5.5
<i>Northeast Region</i>							
	8th	31,855	43.9	42.7	1	30	9.4
	13th	8,467	7.7	8.5	1	4	4.7
	17th	69,058	73.7	80.8	2	34	4.9
	19th	35,275	54.7	54.6	2	29	8.2
	20th	32,027	12.9	13.7	0	6	1.9
Northeast Total		176,682	192.9	200.4	6	103	5.8
<i>Southern Region</i>							
	3rd	1,880	1.0	1.6	0	0	0.0
	4th	80,316	78.8	89.2	4	36	4.5
	10th	17,742	36.7	38.3	0	19	10.7
	11th	7,203	3.0	4.6	0	3	4.2
	12th	5,251	7.9	5.8	0	5	9.5
	15th	2,174	0.0	1.3	0	1	4.6
	16th	2,795	0.0	0.7	0	1	3.6
Southern Total		117,361	127.4	141.4	4	65	5.5
<i>Western Region</i>							
	6th	6,232	6.7	9.9	1	3	4.8
	7th	10,543	8.5	9.5	0	5	4.7
	9th	9,287	3.9	3.9	2	4	4.3
	14th	5,553	4.0	3.2	0	2	3.6
	21st	15,602	32.2	30.3	1	23	14.7
	22nd	3,036	1.8	4.1	0	1	3.3
Western Total		50,253	57.1	61.0	4	38	7.6
Statewide Total		588,083	665.2	695.9	24	340	5.8

¹ JD represents the judicial district in which the client was committed. Regional totals are a sum of their respective judicial districts. Regional totals reported here may differ slightly from those reported in the Monthly Population Report, where region is defined by active caseloads.

² Source: DOLA 2016 Estimates

³ Due to rounding, totals shown may not be an exact sum of the subtotals.

⁴ Per 10,000 youth in the population

May 2016 SB94 Supplemental Report

DYC Detention ADP and New Detention Admissions by Judicial District

Region	JD	2016 Population Estimates ¹	ADP		New Admits		
			May 2016	YTD	May 2016	YTD	YTD New Admit Rate ²
<i>Central Region</i>							
	1st	55,832	31.8	23.4	67	615	110.2
	2nd	60,479	55.4	53.5	98	1,033	170.8
	5th	9,792	2.5	2.6	3	42	42.9
	18th	117,684	40.2	40.6	95	942	80.0
Central Total		243,787	129.9	120.1	263	2,632	108.0
<i>Northeast Region</i>							
	8th	31,855	11.2	14.9	23	353	110.8
	13th	8,467	3.2	3.6	9	79	93.3
	17th	69,058	24.6	24.3	47	487	70.5
	19th	35,275	21.9	19.5	50	461	130.7
	20th	32,027	6.1	5.5	25	265	82.7
Northeast Total		176,682	67.0	67.8	154	1,645	93.1
<i>Southern Region</i>							
	3rd	1,880	1.4	1.3	1	17	90.4
	4th	80,316	47.4	42.1	81	723	90.0
	10th	17,742	16.6	12.3	33	351	197.8
	11th	7,203	1.7	2.8	9	119	165.2
	12th	5,251	2.7	2.1	5	53	100.9
	15th	2,174	0.5	0.9	1	18	82.8
	16th	2,795	0.0	0.6	0	16	57.2
Southern Total		117,361	70.2	62.1	130	1,297	110.5
<i>Western Region</i>							
	6th	6,232	0.7	1.4	3	42	67.4
	7th	10,543	4.0	4.0	7	56	53.1
	9th	9,287	3.6	4.4	7	55	59.2
	14th	5,553	0.3	1.0	2	23	41.4
	21st	15,602	11.8	11.2	19	218	139.7
	22nd	3,036	0.7	0.8	4	19	62.6
Western Total		50,253	21.0	22.9	42	413	82.2
<i>Missing JD or Multiple JDs</i>			<i>1.8</i>	<i>1.5</i>			
Statewide Total		588,083	289.9	274.4	589	5,987	101.8

¹ Source: DOLA 2016 Estimates

² Per 10,000 youth in the population

May 2016 SB94 Supplemental Report

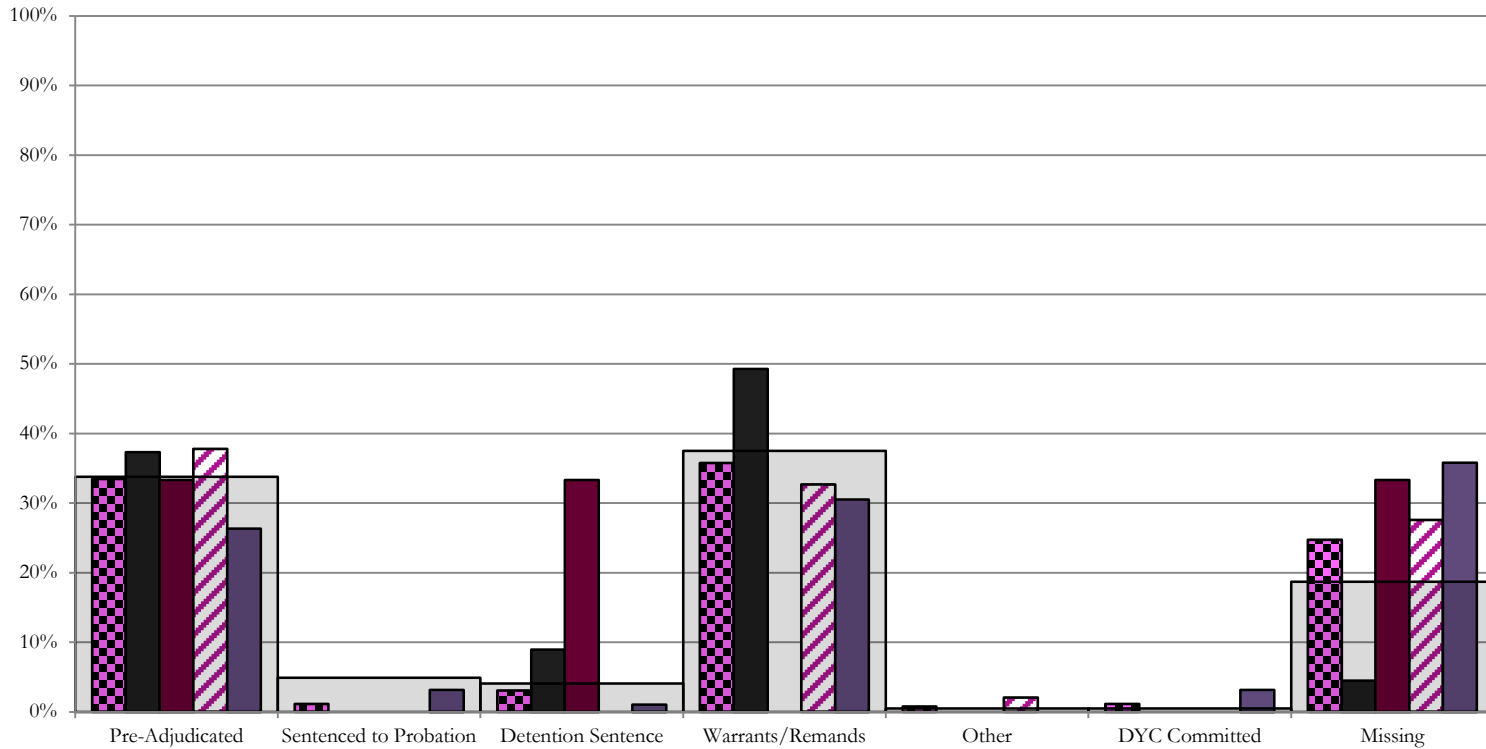
DYC Detention LOS by Judicial District

Region	JD	YTD Detention Releases	YTD LOS (days)	LOS (days) Compared to State AVG
<i>Central Region</i>				
	1st	599	13.5	-1.9
	2nd	1,039	16.6	1.2
	5th	44	21.6	6.2
	18th	939	13.9	-1.5
Central Total		2,621	15.0	-0.4
<i>Northeast Region</i>				
	8th	366	13.0	-2.3
	13th	80	14.9	-0.4
	17th	488	15.4	0.1
	19th	465	15.4	0.0
	20th	263	6.4	-9.0
Northeast Total		1,662	13.4	-1.9
<i>Southern Region</i>				
	3rd	17	21.9	6.6
	4th	706	18.7	3.4
	10th	350	11.1	-4.3
	11th	117	7.7	-7.7
	12th	51	12.6	-2.7
	15th	19	15.9	0.5
	16th	17	10.8	-4.5
Southern Total		1,277	15.3	-0.1
<i>Western Region</i>				
	6th	41	10.9	-4.5
	7th	53	16.9	1.5
	9th	50	26.1	10.7
	14th	22	15.0	-0.3
	21st	206	14.9	-0.5
	22nd	18	14.4	-1.0
Western Total		390	16.1	0.8
Statewide Total		5,966	15.4	-

Central Region

SB94 Reason Detained by Judicial District

May 2016 New Admits



CENTRAL REGION, 263 New Admits

 5th JD, 3 New Admits

 18th JD, 95 New Admits

1st JD, 67 New Admits

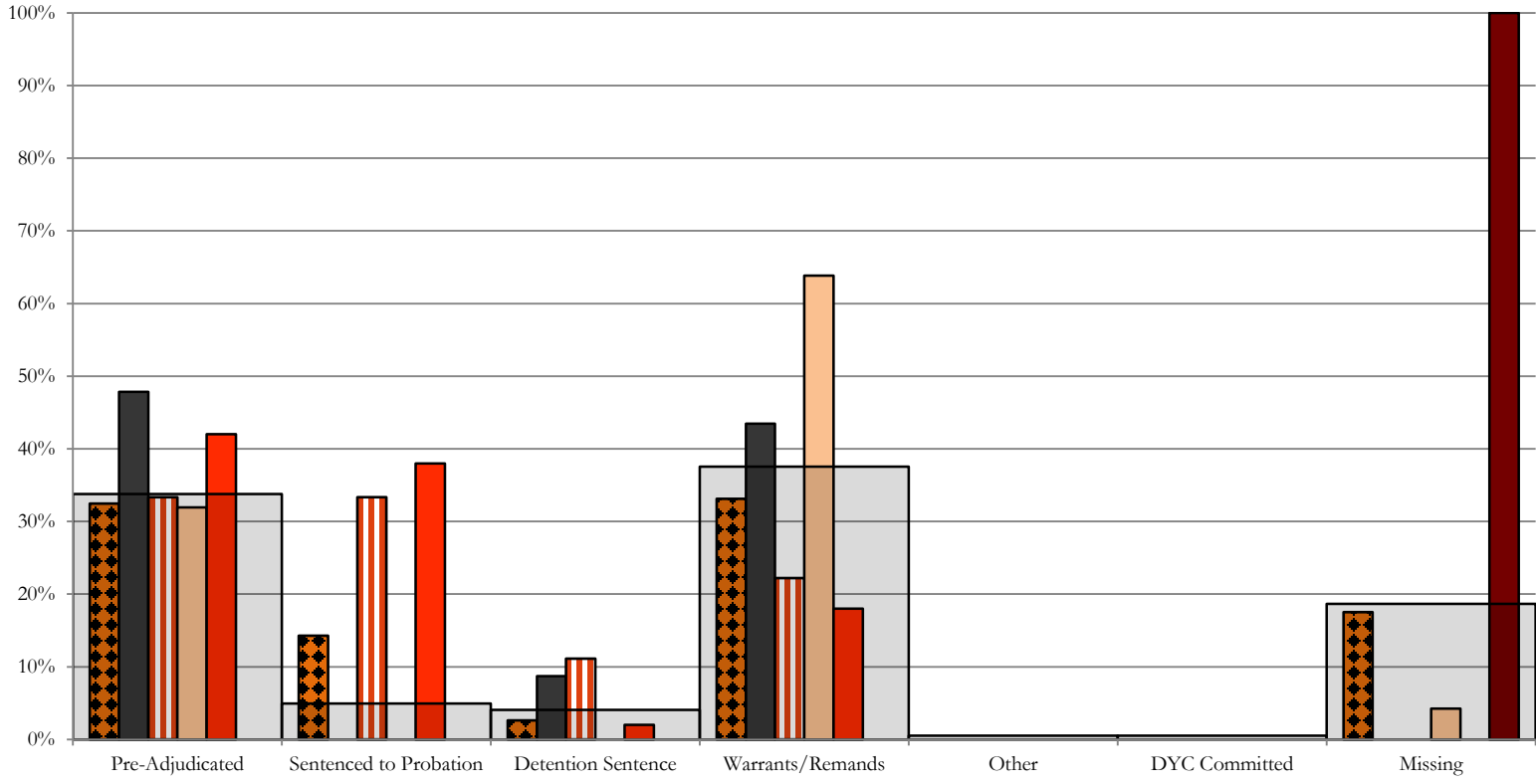
 2nd JD, 98 New Admits

 STATEWIDE, 589 New Admits

Northeast Region

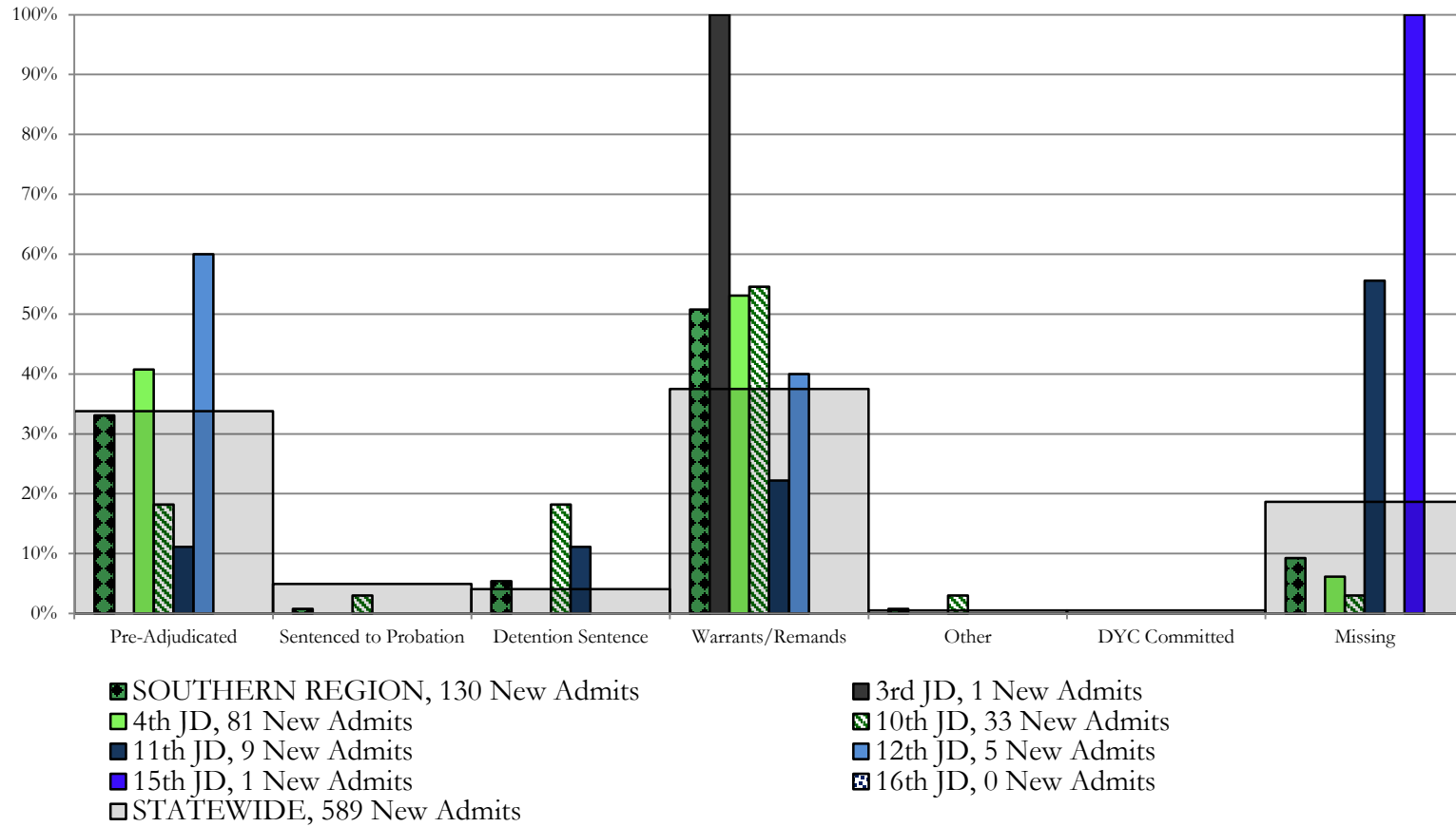
SB94 Reason Detained by Judicial District

May 2016 New Admits



- NORTHEAST REGION, 154 New Admits
- 8th JD, 23 New Admits
- 13th JD, 9 New Admits
- 17th JD, 47 New Admits
- 19th JD, 50 New Admits
- STATEWIDE, 589 New Admits
- 20th JD, 25 New Admits

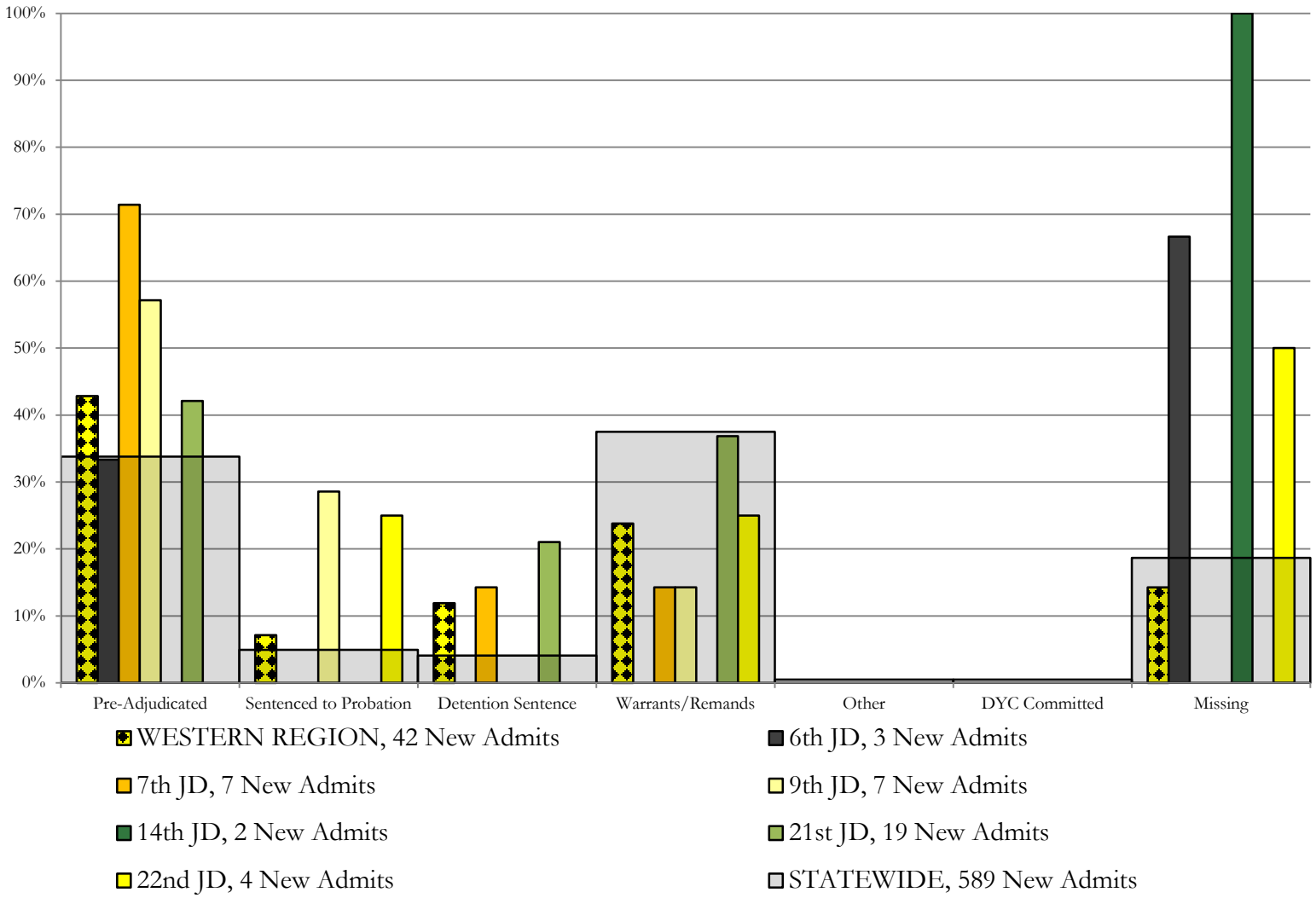
Southern Region SB94 Reason Detained by Judicial District May 2016 New Admits



Western Region

SB94 Reason Detained by Judicial District

May 2016 New Admits



May 2016 SB94 Supplemental Report

DYC Detention Maximum Youth Served by Judicial District¹

Region	JD	Detention Capacity	Detention ADP		Maximum Youth Served on a Single Day ^{2,3}			
			May 2016	YTD	May 2016		YTD	
					Number of Youth	% of Detention Capacity	Number of Youth	% of Detention Capacity
<i>Central Region</i>								
	1st	37	31.8	23.4	36	97.3%	37	100.0%
	2nd	64	55.4	53.5	63	98.4%	66	103.1%
	5th	4	2.5	2.6	4	100.0%	6	150.0%
	18th	61	40.2	40.6	48	78.7%	58	95.1%
Central Region		166	129.9	120.1	139	83.7%	142	85.5%
<i>Northeast Region</i>								
	8th	21	11.2	14.9	17	81.0%	23	109.5%
	13th	5	3.2	3.6	6	120.0%	10	200.0%
	17th	30	24.6	24.3	29	96.7%	31	103.3%
	19th	25	21.9	19.5	27	108.0%	31	124.0%
	20th	13	6.1	5.5	8	61.5%	13	100.0%
Northeast Region		94	67.0	67.8	74	78.7%	95	101.1%
<i>Southern Region</i>								
	3rd	2	1.4	1.3	2	100.0%	3	150.0%
	4th	51	47.4	42.1	53	103.9%	54	105.9%
	10th	13	16.6	12.3	20	153.8%	21	161.5%
	11th	8	1.7	2.8	4	50.0%	8	100.0%
	12th	4	2.7	2.1	4	100.0%	5	125.0%
	15th	2	0.5	0.9	1	50.0%	4	200.0%
	16th	3	0.0	0.6	0	0.0%	2	66.7%
Southern Region		83	70.2	62.1	79	95.2%	79	95.2%
<i>Western Region</i>								
	6th	5	0.7	1.4	3	60.0%	4	80.0%
	7th	7	4.0	4.0	5	71.4%	8	114.3%
	9th	6	3.6	4.4	7	116.7%	10	166.7%
	14th	3	0.3	1.0	1	33.3%	4	133.3%
	21st	14	11.8	11.2	15	107.1%	19	135.7%
	22nd	4	0.7	0.8	3	75.0%	4	100.0%
Western Region		39	21.0	22.9	28	71.8%	30	76.9%
<i>Missing JD or Multiple JDs</i>			1.8	1.5				
Statewide		382	289.9	274.4	308	80.6%	315	82.5%

¹ Maximum youth served is the highest number of youth in detention on a single day during the month or fiscal year.

² Regional figures are not the sum of judicial districts, but represent the maximum count on one day for the entire region.

³ State figures are not the sum of regional figures, but represent the maximum count on one day for the entire state.

May 2016
SB94 Supplemental Report

SB94 Community ADP by Judicial District

Region	JD	Committed		Diversion		ICJ		Municipal		Pre-Adjudicated		Sentenced		VCO		Total	
		May	YTD	May	YTD	May	YTD	May	YTD	May	YTD	May	YTD	May	YTD	May	YTD
<i>Central Region</i>																	
	1st	1.1	0.6	1.0	0.4	0.0	0.0	13.3	13.6	343.8	266.5	28.4	23.1	0.0	0.0	387.5	304.2
	2nd	3.1	1.5	0.9	0.1	0.0	0.1	0.0	0.0	309.9	243.0	78.3	71.5	2.0	1.7	394.2	317.9
	5th	0.0	0.0	8.1	1.3	0.0	0.0	0.0	0.0	15.8	12.3	26.0	27.6	0.0	0.0	49.9	41.2
	18th	1.7	0.8	6.3	9.7	0.0	0.0	0.0	0.0	292.7	288.7	50.9	45.3	9.7	6.1	361.3	350.6
Central Total		5.9	2.9	16.4	11.5	0.0	0.1	13.3	13.6	962.1	810.5	183.5	167.5	11.7	7.8	1192.9	1013.8
<i>Northeast Region</i>																	
	8th	1.0	0.2	0.0	0.3	0.0	0.0	0.0	0.0	63.4	48.7	55.9	45.5	0.0	0.0	120.3	94.7
	13th	0.0	0.0	0.0	0.0	0.0	0.0	0.7	0.1	16.1	16.6	7.6	10.7	4.8	5.1	29.2	32.5
	17th	2.0	0.6	0.0	0.6	0.0	0.0	1.0	1.0	189.6	123.3	41.3	47.7	0.0	0.0	233.9	173.1
	19th	1.1	0.5	0.0	0.0	0.0	0.0	0.0	0.3	63.2	60.6	37.3	38.1	2.0	1.2	103.6	100.7
	20th	0.7	0.1	0.0	0.0	0.0	0.0	0.0	0.0	93.4	67.6	53.2	39.1	0.0	0.0	147.3	106.8
Northeast Total		4.8	1.4	0.0	0.9	0.0	0.0	1.7	1.3	425.6	316.8	195.4	181.1	6.8	6.4	634.3	507.9
<i>Southern Region</i>																	
	3rd	0.0	0.0	0.0	0.0	0.0	0.0	0.0	0.0	8.9	7.7	9.4	4.8	1.0	1.2	19.3	13.7
	4th	2.1	1.2	0.0	0.0	0.0	0.0	28.0	14.6	225.8	171.4	138.4	110.7	2.0	1.4	396.3	299.4
	10th	1.7	1.4	0.0	0.0	0.0	0.0	90.2	60.2	32.0	22.0	29.4	18.9	6.7	7.9	160.0	110.4
	11th	0.0	0.0	0.0	0.0	0.0	0.0	0.0	0.2	26.4	18.3	44.3	30.4	8.0	2.4	78.7	51.2
	12th	0.0	0.0	0.0	0.0	0.0	0.0	0.0	0.0	10.6	7.0	0.0	3.7	0.0	0.0	10.6	10.8
	15th	0.0	0.0	0.0	0.0	0.0	0.0	0.0	0.0	8.1	5.1	12.0	8.7	0.0	0.0	20.0	13.9
	16th	0.0	0.0	0.0	0.0	0.0	0.0	0.0	0.0	5.0	4.4	14.4	14.0	19.1	19.7	38.6	38.2
Southern Total		3.8	2.7	0.0	0.0	0.0	0.0	118.2	75.0	316.8	236.0	247.9	191.3	36.8	32.5	723.6	537.5
<i>Western Region</i>																	
	6th	0.0	0.0	1.0	0.4	0.0	0.0	1.0	1.2	11.2	10.8	2.0	1.3	1.0	1.0	16.3	14.6
	7th	0.0	0.0	4.0	4.4	0.0	0.0	0.0	0.8	9.2	11.0	20.6	17.6	0.0	0.6	33.8	34.5
	9th	0.0	0.0	0.0	0.1	0.0	0.0	0.0	0.0	8.6	12.5	5.9	7.2	0.0	0.0	14.5	19.8
	14th	0.0	0.0	23.9	19.3	0.0	0.1	0.0	0.0	2.5	4.3	1.0	0.9	0.0	0.0	27.4	24.7
	21st	0.0	0.0	0.0	0.1	0.0	0.0	3.0	1.6	26.0	38.6	14.2	16.3	0.1	0.0	43.3	56.6
	22nd	0.0	0.0	0.0	0.0	0.0	0.0	0.0	0.0	10.5	4.6	1.9	1.3	0.0	0.0	12.4	5.9
Western Total		0.0	0.0	29.0	24.3	0.0	0.1	4.0	3.6	68.0	82.0	45.6	44.5	1.1	1.6	147.7	156.0
Statewide Total		14.5	7.0	45.3	36.6	0.0	0.2	137.2	93.5	1772.5	1445.2	672.5	584.4	56.4	48.3	2698.4	2215.2