

April 2016
FY 2015-2016
SB94 JDSAG SUPPLEMENTAL REPORT

Prepared by the Division of Youth Corrections (DYC)
Research and Evaluation Unit
May 23rd, 2016



COLORADO

**Office of Children,
Youth & Families**

Division of Youth Corrections

April 2016 SB94 Supplemental Report

DYC Commitment ADP & New Commitments by Judicial District

Region	JD ¹	2016 Population Estimates ²	ADP ³		New Commitments		
			April 2016	YTD	April 2016	YTD	YTD Rate ⁴
<i>Central Region</i>							
	1st	55,832	69.2	69.8	7	37	6.6
	2nd	60,479	131.3	134.1	5	48	7.9
	5th	9,792	9.5	11.2	2	4	4.1
	18th	117,684	74.8	78.4	4	34	2.9
Central Total		243,787	284.9	293.5	18	123	5.0
<i>Northeast Region</i>							
	8th	31,855	46.6	42.6	3	29	9.1
	13th	8,467	8.4	8.6	0	3	3.5
	17th	69,058	76.5	81.5	3	32	4.6
	19th	35,275	56.0	54.6	1	27	7.7
	20th	32,027	15.2	13.8	2	6	1.9
Northeast Total		176,682	202.7	201.2	9	97	5.5
<i>Southern Region</i>							
	3rd	1,880	1.0	1.7	0	0	0.0
	4th	80,316	78.8	90.2	4	31	3.9
	10th	17,742	36.9	38.5	2	19	10.7
	11th	7,203	3.0	4.7	0	3	4.2
	12th	5,251	7.0	5.6	1	5	9.5
	15th	2,174	0.0	1.4	0	1	4.6
	16th	2,795	0.0	0.7	0	1	3.6
Southern Total		117,361	126.7	142.9	7	60	5.1
<i>Western Region</i>							
	6th	6,232	7.1	10.2	2	2	3.2
	7th	10,543	10.5	9.6	1	5	4.7
	9th	9,287	2.1	4.0	1	2	2.2
	14th	5,553	4.0	3.2	0	2	3.6
	21st	15,602	29.9	30.1	3	22	14.1
	22nd	3,036	2.1	4.4	0	1	3.3
Western Total		50,253	55.8	61.4	7	34	6.8
Statewide Total		588,083	670.1	699.0	41	314	5.3

¹ JD represents the judicial district in which the client was committed. Regional totals are a sum of their respective judicial districts. Regional totals reported here may differ slightly from those reported in the Monthly Population Report, where region is defined by active caseloads.

² Source: DOLA 2016 Estimates

³ Due to rounding, totals shown may not be an exact sum of the subtotals.

⁴ Per 10,000 youth in the population

April 2016 SB94 Supplemental Report

DYC Detention ADP and New Detention Admissions by Judicial District

Region	JD	2016 Population Estimates ¹	ADP		New Admits		
			April 2016	YTD	April 2016	YTD	YTD New Admit Rate ²
<i>Central Region</i>							
	1st	55,832	29.2	22.8	73	552	98.9
	2nd	60,479	52.6	53.4	100	935	154.6
	5th	9,792	3.1	2.6	5	39	39.8
	18th	117,684	41.5	40.6	79	847	72.0
Central Total		243,787	126.4	119.5	257	2,373	97.3
<i>Northeast Region</i>							
	8th	31,855	15.9	15.3	24	330	103.6
	13th	8,467	7.3	3.6	5	70	82.7
	17th	69,058	19.7	24.2	45	440	63.7
	19th	35,275	21.3	19.3	45	411	116.5
	20th	32,027	7.1	5.4	25	240	74.9
Northeast Total		176,682	71.4	67.9	144	1,491	84.4
<i>Southern Region</i>							
	3rd	1,880	1.0	1.3	0	16	85.1
	4th	80,316	44.8	41.7	69	642	79.9
	10th	17,742	14.5	11.9	35	318	179.2
	11th	7,203	2.7	3.0	9	110	152.7
	12th	5,251	1.8	2.1	4	48	91.4
	15th	2,174	0.9	0.9	2	17	78.2
	16th	2,795	0.7	0.6	3	16	57.2
Southern Total		117,361	66.5	61.4	122	1,167	99.4
<i>Western Region</i>							
	6th	6,232	2.3	1.5	10	39	62.6
	7th	10,543	2.3	4.0	2	49	46.5
	9th	9,287	6.4	4.5	5	48	51.7
	14th	5,553	1.2	1.1	3	21	37.8
	21st	15,602	12.0	11.2	18	199	127.5
	22nd	3,036	0.0	0.8	0	15	49.4
Western Total		50,253	24.1	23.1	38	371	73.8
<i>Missing JD or Multiple JDs</i>			<i>0.5</i>	<i>1.4</i>			
Statewide Total		588,083	288.8	273.2	561	5,402	91.9

¹ Source: DOLA 2016 Estimates

² Per 10,000 youth in the population

April 2016

SB94 Supplemental Report

DYC Detention LOS by Judicial District				
Region	JD	YTD Detention Releases	YTD LOS (days)	LOS (days) Compared to State AVG
<i>Central Region</i>				
	1st	542	13.7	-1.7
	2nd	935	16.3	0.9
	5th	39	22.1	6.7
	18th	851	13.8	-1.6
Central Total		2,367	14.9	-0.5
<i>Northeast Region</i>				
	8th	338	13.2	-2.2
	13th	69	14.4	-1.0
	17th	444	15.7	0.4
	19th	416	15.7	0.3
	20th	237	6.2	-9.2
Northeast Total		1,504	13.6	-1.8
<i>Southern Region</i>				
	3rd	16	22.6	7.2
	4th	631	19.0	3.6
	10th	315	10.8	-4.6
	11th	112	7.7	-7.7
	12th	48	12.1	-3.3
	15th	19	15.9	0.5
	16th	17	10.8	-4.6
Southern Total		1,158	15.3	-0.1
<i>Western Region</i>				
	6th	39	11.1	-4.3
	7th	47	18.5	3.1
	9th	42	27.0	11.6
	14th	20	16.1	0.8
	21st	185	15.3	-0.1
	22nd	16	15.9	0.5
Western Total		349	16.7	1.3
Statewide Total		5,391	15.4	-

April 2016
SB94 JDSAG Supplemental Report

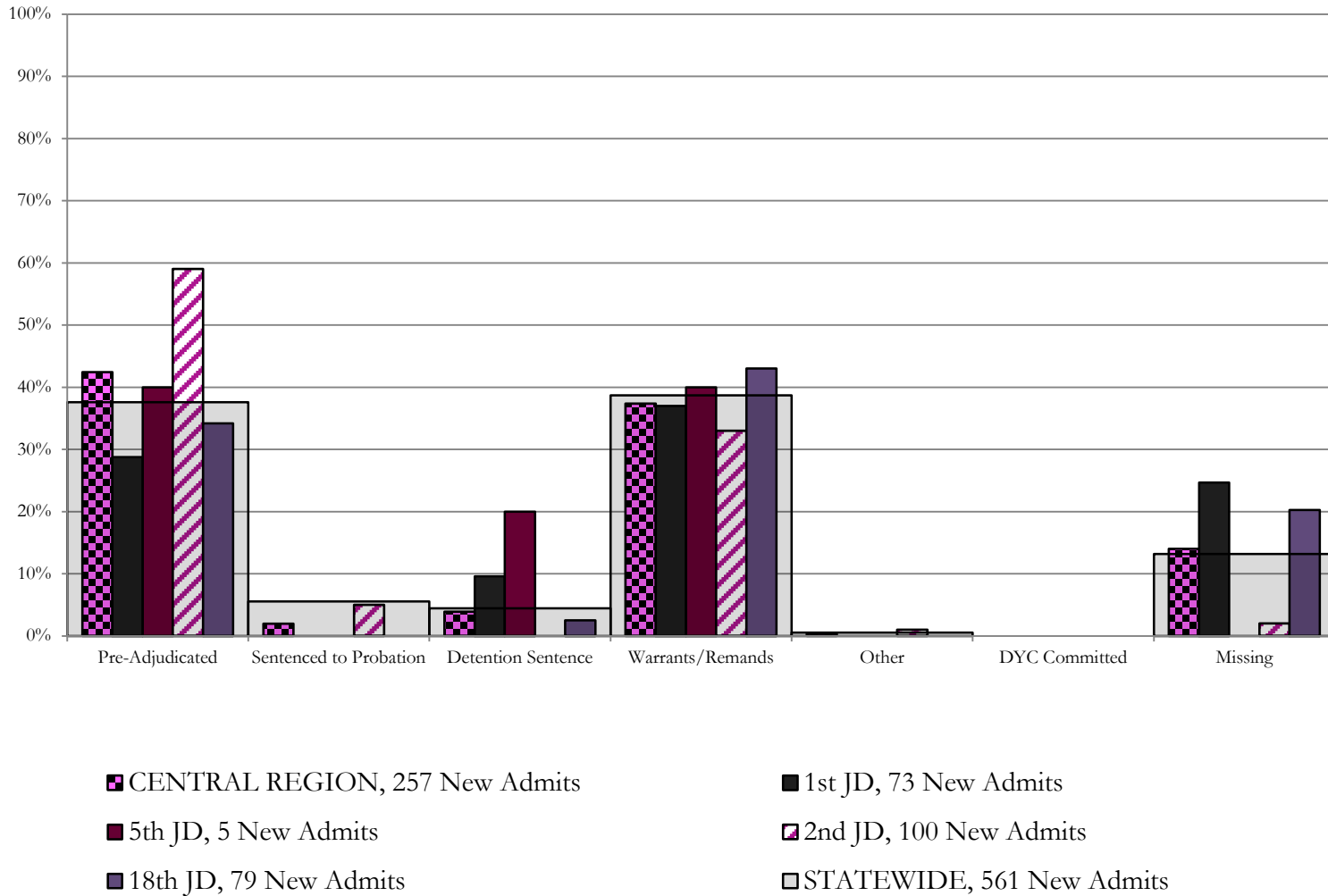
SB94 Reason Detained (RD) by Judicial District

Region	JD	Monthly New Admits	Pre-Adjudicated				Sentenced to Probation				Detention Sentence								Warrants/Remands				Other						DYC Committed		Missing					
			Felony		Misdemeanor		Technical Violator		New Charges		Probation Sentence		Detention Sentence		Valid Court Order (VCO) Truancy		Awaiting DSS (Social Services) Placement		Failure to Appear (FTA)		Failure to Comply (FTC)		Interstate Compact on Juveniles (ICJ) Hold		Immigration Hold		No Bond Hold		Out-of-Country Warrant		Institutional		Parole		Missing	
			#	%	#	%	#	%	#	%	#	%	#	%	#	%	#	%	#	%	#	%	#	%	#	%	#	%	#	%	#	%	#	%		
<i>Central Region</i>																																				
	1st	73	8	11.0%	13	17.8%	0	0.0%	0	0.0%	0	0.0%	7	9.6%	0	0.0%	0	0.0%	3	4.1%	24	32.9%	0	0.0%	0	0.0%	0	0.0%	0	0.0%	0	0.0%	0	0.0%	18	24.7%
	2nd	100	50	50.0%	9	9.0%	2	2.0%	3	3.0%	0	0.0%	0	0.0%	0	0.0%	0	0.0%	11	11.0%	22	22.0%	1	1.0%	0	0.0%	0	0.0%	0	0.0%	0	0.0%	0	0.0%	2	2.0%
	5th	5	2	40.0%	0	0.0%	0	0.0%	0	0.0%	0	0.0%	0	0.0%	0	0.0%	1	20.0%	0	0.0%	2	40.0%	0	0.0%	0	0.0%	0	0.0%	0	0.0%	0	0.0%	0	0.0%	0	0.0%
	18th	79	18	22.8%	9	11.4%	0	0.0%	0	0.0%	0	0.0%	2	2.5%	0	0.0%	0	0.0%	7	8.9%	27	34.2%	0	0.0%	0	0.0%	0	0.0%	0	0.0%	0	0.0%	0	0.0%	16	20.3%
Central Total		257	78	30%	31	12%	2	0.8%	3	1.2%	0	0.0%	9	3.5%	0	0.0%	1	0.4%	21	8%	75	29%	1	0.4%	0	0.0%	0	0.0%	0	0.0%	0	0.0%	0	0.0%	36	14.0%
<i>Northeast Region</i>																																				
	8th	24	3	12.5%	6	25.0%	0	0.0%	0	0.0%	0	0.0%	1	4.2%	0	0.0%	0	0.0%	1	4.2%	12	50.0%	0	0.0%	0	0.0%	0	0.0%	0	0.0%	0	0.0%	0	0.0%	1	4.2%
	13th	5	1	20.0%	1	20.0%	0	0.0%	0	0.0%	0	0.0%	0	0.0%	1	20.0%	0	0.0%	0	0.0%	2	40.0%	0	0.0%	0	0.0%	0	0.0%	0	0.0%	0	0.0%	0	0.0%	0	0.0%
	17th	45	12	26.7%	4	8.9%	0	0.0%	1	2.2%	0	0.0%	0	0.0%	0	0.0%	0	0.0%	6	13.3%	15	33.3%	0	0.0%	0	0.0%	0	0.0%	0	0.0%	0	0.0%	0	0.0%	8	17.8%
	19th	45	11	24.4%	5	11.1%	15	33.3%	0	0.0%	0	0.0%	2	4.4%	1	2.2%	0	0.0%	2	4.4%	9	20.0%	0	0.0%	0	0.0%	0	0.0%	0	0.0%	0	0.0%	0	0.0%	0	0.0%
	20th	25	3	12.0%	1	4.0%	0	0.0%	0	0.0%	0	0.0%	0	0.0%	0	0.0%	0	0.0%	0	0.0%	1	4.0%	0	0.0%	0	0.0%	0	0.0%	0	0.0%	0	0.0%	0	0.0%	20	80.0%
Northeast Total		144	30	21%	17	12%	15	10.4%	1	0.7%	0	0.0%	3	2.1%	2	1.4%	0	0.0%	9	6.3%	39	27%	0	0.0%	0	0.0%	0	0.0%	0	0.0%	0	0.0%	0	0.0%	28	19%
<i>Southern Region</i>																																				
	3rd	0	0	0.0%	0	0.0%	0	0.0%	0	0.0%	0	0.0%	0	0.0%	0	0.0%	0	0.0%	0	0.0%	0	0.0%	0	0.0%	0	0.0%	0	0.0%	0	0.0%	0	0.0%	0	0.0%	0	0.0%
	4th	69	23	33.3%	6	8.7%	4	5.8%	4	5.8%	0	0.0%	0	0.0%	2	2.9%	0	0.0%	4	11.4%	19	27.5%	0	0.0%	0	0.0%	0	0.0%	0	0.0%	0	0.0%	0	0.0%	0	0.0%
	10th	35	7	20.0%	1	2.9%	0	0.0%	0	0.0%	0	0.0%	3	8.6%	0	0.0%	0	0.0%	4	11.4%	19	54.3%	0	0.0%	0	0.0%	0	0.0%	0	0.0%	0	0.0%	0	0.0%	1	2.9%
	11th	9	3	33.3%	2	22.2%	0	0.0%	0	0.0%	0	0.0%	0	0.0%	0	0.0%	0	0.0%	1	11.1%	2	22.2%	0	0.0%	0	0.0%	0	0.0%	0	0.0%	0	0.0%	0	0.0%	1	11.1%
	12th	4	2	50.0%	1	25.0%	0	0.0%	0	0.0%	0	0.0%	0	0.0%	0	0.0%	0	0.0%	0	0.0%	1	25.0%	0	0.0%	0	0.0%	0	0.0%	0	0.0%	0	0.0%	0	0.0%	0	0.0%
	15th	2	0	0.0%	1	50.0%	0	0.0%	0	0.0%	0	0.0%	0	0.0%	0	0.0%	0	0.0%	0	0.0%	1	50.0%	0	0.0%	0	0.0%	0	0.0%	0	0.0%	0	0.0%	0	0.0%	0	0.0%
	16th	3	0	0.0%	0	0.0%	0	0.0%	0	0.0%	0	0.0%	1	33.3%	0	0.0%	0	0.0%	0	0.0%	0	0.0%	0	0.0%	0	0.0%	0	0.0%	0	0.0%	0	0.0%	0	0.0%	2	66.7%
Southern Total		122	35	29%	11	9%	4	3.3%	4	3.3%	0	0.0%	4	3.3%	2	1.6%	0	0.0%	16	13%	42	34%	0	0.0%	0	0.0%	0	0.0%	0	0.0%	0	0.0%	0	0.0%	4	3%
<i>Western Region</i>																																				
	6th	10	1	10.0%	0	0.0%	0	0.0%	0	0.0%	0	0.0%	0	0.0%	0	0.0%	0	0.0%	0	0.0%	5	50.0%	0	0.0%	0	0.0%	0	0.0%	0	0.0%	0	0.0%	0	0.0%	4	40%
	7th	2	0	0.0%	0	0.0%	0	0.0%	0	0.0%	0	0.0%	1	50.0%	0	0.0%	0	0.0%	0	0.0%	0	0.0%	0	0.0%	0	0.0%	0	0.0%	0	0.0%	0	0.0%	0	0.0%	1	50.0%
	9th	5	1	20.0%	1	20.0%	2	40.0%	0	0.0%	0	0.0%	0	0.0%	0	0.0%	0	0.0%	0	0.0%	1	20.0%	0	0.0%	0	0.0%	0	0.0%	0	0.0%	0	0.0%	0	0.0%	0	0.0%
	14th	3	0	0.0%	0	0.0%	0	0.0%	0	0.0%	0	0.0%	0	0.0%	0	0.0%	0	0.0%	0	0.0%	1	33.3%	2	66.7%	0	0.0%	0	0.0%	0	0.0%	0	0.0%	0	0.0%	0	0.0%
	21st	18	5	27.8%	1	5.6%	0	0.0%	0	0.0%	0	0.0%	3	16.7%	0	0.0%	0	0.0%	0	0.0%	8	44.4%	0	0.0%	0	0.0%	0	0.0%	0	0.0%	0	0.0%	0	0.0%	1	5.6%
	22nd	0	0	0.0%	0	0.0%	0	0.0%	0	0.0%	0	0.0%	0	0.0%	0	0.0%	0	0.0%	0	0.0%	0	0.0%	0	0.0%	0	0.0%	0	0.0%	0	0.0%	0	0.0%	0	0.0%	0	0.0%
Western Total		38	7	18%	2	5.3%	2	5.3%	0	0.0%	0	0.0%	4	10.5%	0	0.0%	0	0.0%	0	0.0%	15	39%	2	5.3%	0	0.0%	0	0.0%	0	0.0%	0	0.0%	0	0.0%	6	16%
Individual RD Totals		561	150	27%	61	11%	23	4.1%	8	1.4%	0	0.0%	20	3.6%	4	0.7%	1	0.2%	46	8%	171	30%	3	0.5%	0	0.0%	0	0.0%	0	0.0%	0	0.0%	0	0.0%	74	13%
Statewide Totals		561	211	37.6%	31	5.5%					25			4.5%				217	38.7%	3		0.5%			0	0.0%	0	0.0%	0	0.0%	74	13%				

Central Region

SB94 Reason Detained by Judicial District

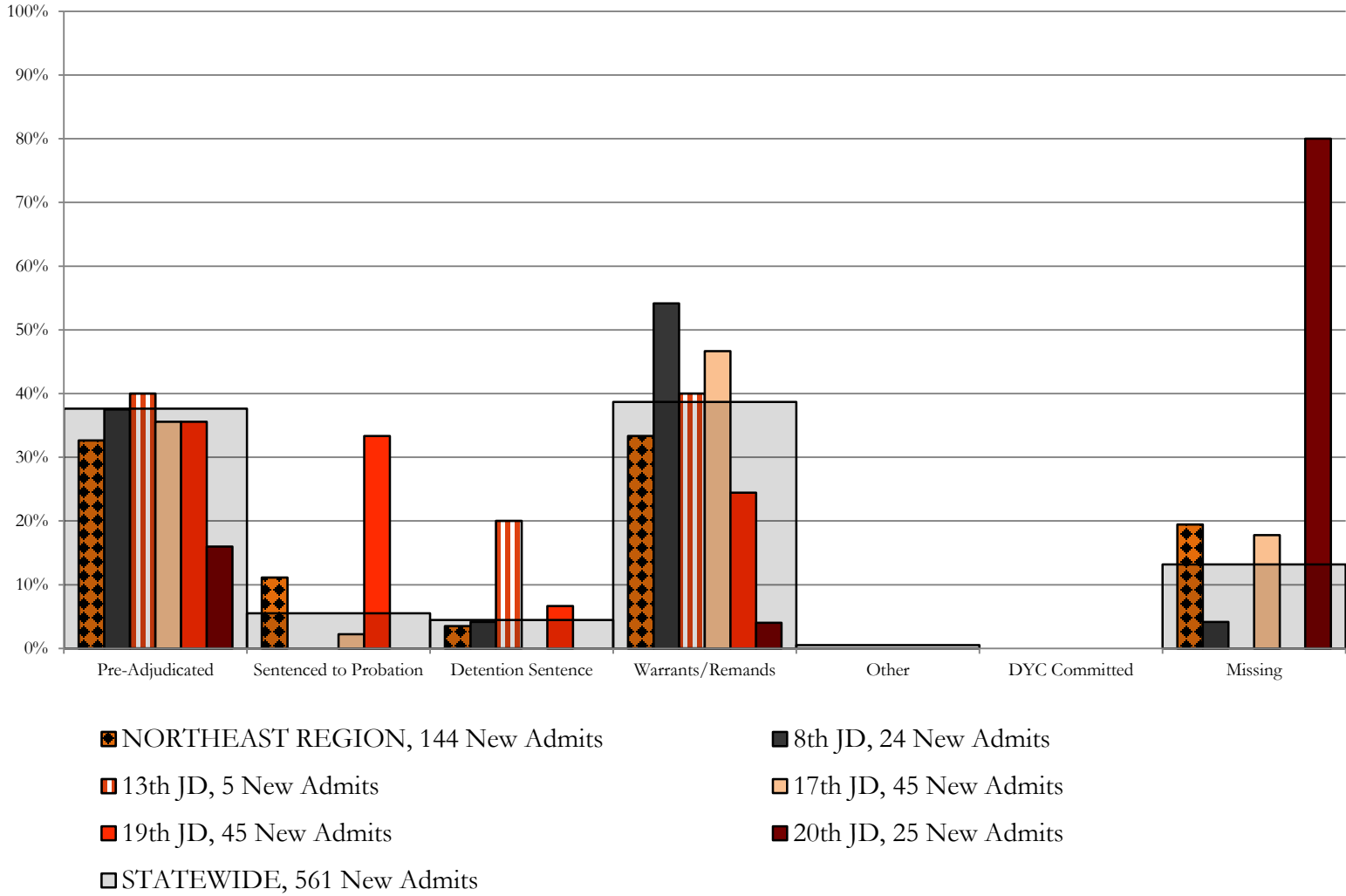
April 2016 New Admits



Northeast Region

SB94 Reason Detained by Judicial District

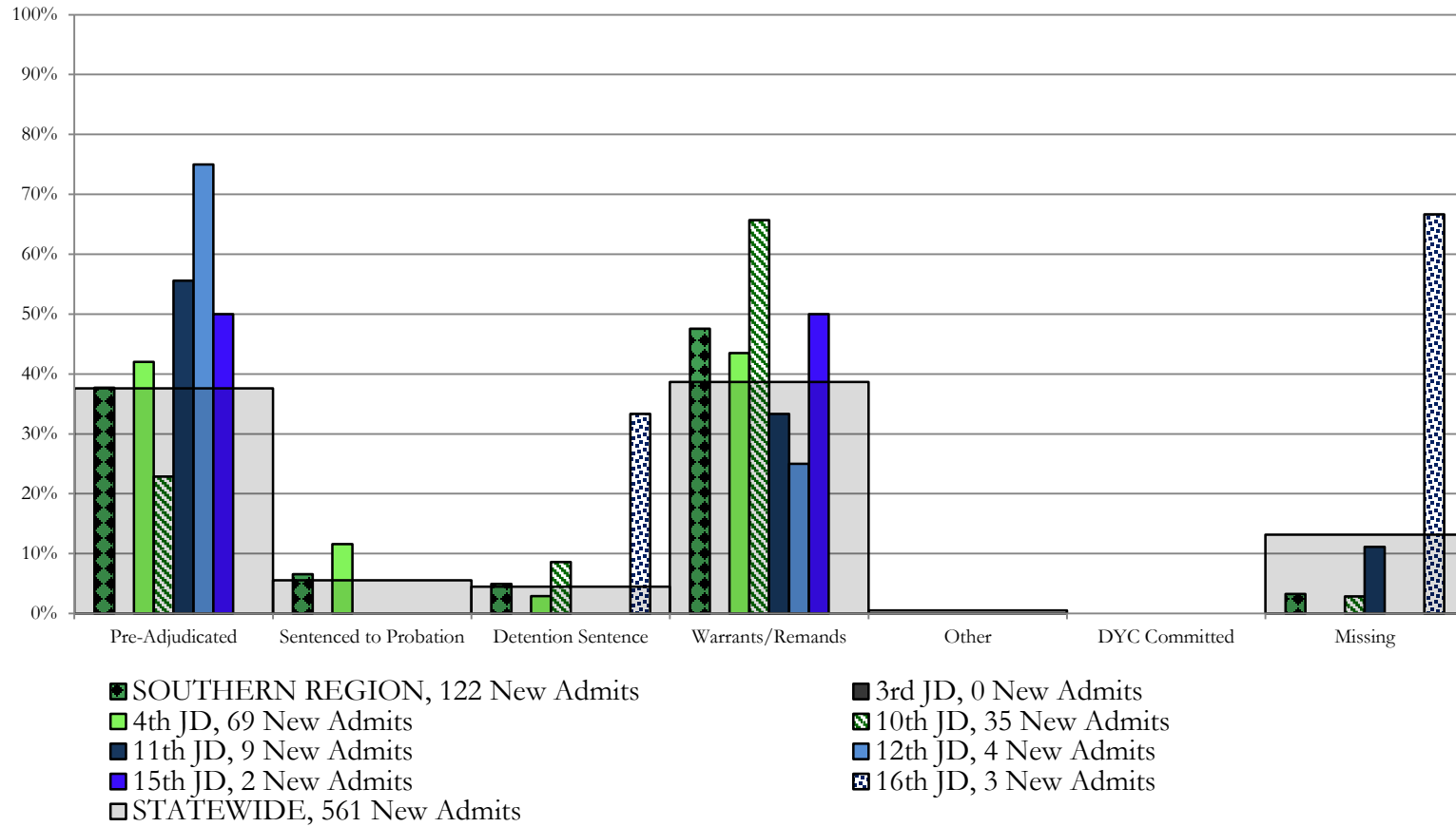
April 2016 New Admits



Southern Region

SB94 Reason Detained by Judicial District

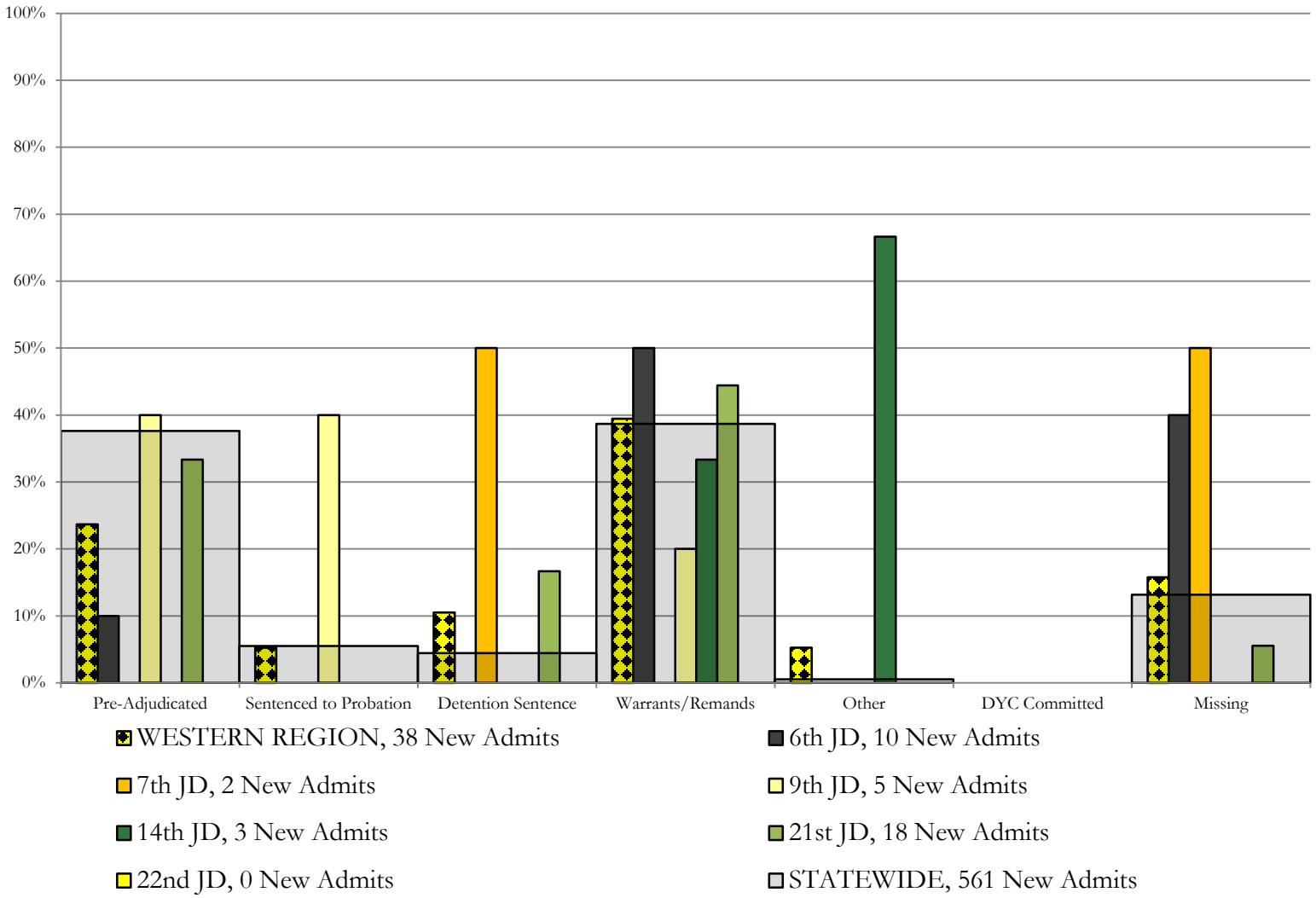
April 2016 New Admits



Western Region

SB94 Reason Detained by Judicial District

April 2016 New Admits



April 2016 SB94 Supplemental Report

DYC Detention Maximum Youth Served by Judicial District¹

Region	JD	Detention Capacity	Detention ADP		Maximum Youth Served on a Single Day ^{2,3}			
			April 2016	YTD	April 2016		YTD	
					Number of Youth	% of Detention Capacity	Number of Youth	% of Detention Capacity
<i>Central Region</i>								
	1st	37	29.2	22.8	36	97.3%	37	100.0%
	2nd	64	52.6	53.4	61	95.3%	66	103.1%
	5th	4	3.1	2.6	4	100.0%	6	150.0%
	18th	61	41.5	40.6	50	82.0%	58	95.1%
Central Region		166	126.4	119.5	140	84.3%	142	85.5%
<i>Northeast Region</i>								
	8th	21	15.9	15.3	23	109.5%	23	109.5%
	13th	5	7.3	3.6	8	160.0%	10	200.0%
	17th	30	19.7	24.2	25	83.3%	31	103.3%
	19th	25	21.3	19.3	26	104.0%	31	124.0%
	20th	13	7.1	5.4	12	92.3%	13	100.0%
Northeast Region		94	71.4	67.9	82	87.2%	95	101.1%
<i>Southern Region</i>								
	3rd	2	1.0	1.3	2	100.0%	3	150.0%
	4th	51	44.8	41.7	50	98.0%	55	107.8%
	10th	13	14.5	11.9	20	153.8%	21	161.5%
	11th	8	2.7	3.0	5	62.5%	8	100.0%
	12th	4	1.8	2.1	4	100.0%	5	125.0%
	15th	2	0.9	0.9	3	150.0%	4	200.0%
	16th	3	0.7	0.6	1	33.3%	2	66.7%
Southern Region		83	66.5	61.4	73	88.0%	80	96.4%
<i>Western Region</i>								
	6th	5	2.3	1.5	4	80.0%	4	80.0%
	7th	7	2.3	4.0	4	57.1%	8	114.3%
	9th	6	6.4	4.5	8	133.3%	10	166.7%
	14th	3	1.2	1.1	3	100.0%	4	133.3%
	21st	14	12.0	11.2	15	107.1%	19	135.7%
	22nd	4	0.0	0.8	0	0.0%	4	100.0%
Western Region		39	24.1	23.1	29	74.4%	30	76.9%
<i>Missing JD or Multiple JDs</i>			0.5	1.4				
Statewide		382	288.8	273.2	308	80.6%	316	82.7%

¹ Maximum youth served is the highest number of youth in detention on a single day during the month or fiscal year.

² Regional figures are not the sum of judicial districts, but represent the maximum count on one day for the entire region.

³ State figures are not the sum of regional figures, but represent the maximum count on one day for the entire state.

April 2016
SB94 Supplemental Report

SB94 Community ADP by Judicial District

Region	JD	Committed		Diversion		ICJ		Municipal		Pre-Adjudicated		Sentenced		VCO		Total	
		April	YTD	April	YTD	April	YTD	April	YTD	April	YTD	April	YTD	April	YTD	April	YTD
<i>Central Region</i>																	
	1st	1.1	0.5	1.0	0.4	0.0	0.0	0.1	0.1	325.2	249.9	24.6	17.5	0.0	0.0	352.0	268.3
	2nd	3.2	1.4	0.0	0.0	0.2	0.1	0.0	0.0	291.6	237.5	82.6	72.0	2.0	1.6	379.6	312.5
	5th	0.0	0.0	1.0	0.2	0.0	0.0	0.0	0.0	14.7	11.9	26.2	27.8	0.0	0.0	41.9	40.0
	18th	1.1	0.7	6.9	10.0	0.0	0.0	0.0	0.0	297.8	288.4	50.3	44.7	10.0	5.8	366.0	349.6
Central Total		5.3	2.6	8.9	10.6	0.2	0.1	0.1	0.1	929.2	787.6	183.7	162.0	12.0	7.4	1139.5	970.3
<i>Northeast Region</i>																	
	8th	0.7	0.1	1.0	0.3	0.0	0.0	0.0	0.0	59.8	47.6	55.9	44.2	0.0	0.0	117.4	92.2
	13th	0.0	0.0	0.0	0.0	0.0	0.0	0.0	0.0	22.1	16.8	8.2	11.1	4.1	5.1	34.4	33.0
	17th	0.6	0.4	0.8	0.6	0.0	0.0	1.0	1.0	172.4	117.6	46.0	48.4	0.0	0.0	220.8	168.0
	19th	1.0	0.5	0.0	0.0	0.0	0.0	0.0	0.3	60.8	60.3	34.1	38.8	1.7	1.2	97.7	101.1
	20th	0.0	0.1	0.0	0.0	0.0	0.0	0.0	0.0	75.6	57.1	51.1	35.5	0.0	0.0	126.8	92.6
Northeast Total		2.4	1.0	1.7	0.9	0.0	0.0	1.0	1.3	390.7	299.4	195.3	177.9	5.8	6.3	597.0	486.8
<i>Southern Region</i>																	
	3rd	0.0	0.0	0.0	0.0	0.0	0.0	0.0	0.0	6.7	7.6	9.3	4.3	1.0	1.2	17.0	13.1
	4th	2.0	1.1	0.0	0.0	0.0	0.0	2.6	1.3	193.8	161.0	135.0	108.5	1.5	1.3	334.8	273.2
	10th	2.0	1.4	0.0	0.0	0.0	0.0	94.3	59.6	23.9	21.0	28.9	18.1	8.0	8.8	157.2	108.9
	11th	0.0	0.0	0.0	0.0	0.0	0.0	0.0	0.2	24.2	17.1	41.6	29.3	7.6	1.8	73.4	48.4
	12th	0.0	0.0	0.0	0.0	0.0	0.0	0.0	0.0	10.7	6.7	1.0	4.1	0.0	0.0	11.7	10.8
	15th	0.0	0.0	0.0	0.0	0.0	0.0	0.0	0.0	10.4	4.8	14.2	8.4	0.0	0.0	24.5	13.2
	16th	0.0	0.0	0.0	0.0	0.0	0.0	0.0	0.0	5.0	4.4	13.0	12.9	6.0	5.2	24.0	22.5
Southern Total		4.0	2.6	0.0	0.0	0.0	0.0	96.9	61.1	274.7	222.5	242.9	185.7	24.1	18.3	642.6	490.1
<i>Western Region</i>																	
	6th	0.0	0.0	2.0	0.3	0.0	0.0	1.0	1.2	8.9	10.7	1.0	0.2	1.0	1.0	13.8	13.4
	7th	0.0	0.0	4.8	4.5	0.0	0.0	1.1	0.9	8.7	11.2	21.6	17.2	1.6	0.7	37.8	34.5
	9th	0.0	0.0	0.0	0.1	0.0	0.0	0.0	0.0	12.6	12.0	7.2	7.3	0.0	0.0	19.8	19.4
	14th	0.0	0.0	18.0	16.7	0.7	0.1	0.0	0.0	4.0	4.7	2.1	1.9	0.0	0.0	24.7	23.4
	21st	0.0	0.0	0.7	0.1	0.0	0.0	3.0	1.4	27.4	40.0	15.5	16.7	0.1	0.0	46.7	58.1
	22nd	0.0	0.0	0.0	0.0	0.0	0.0	0.0	0.0	5.6	3.3	1.0	1.2	0.0	0.0	6.6	4.5
Western Total		0.0	0.0	25.5	21.7	0.7	0.1	5.1	3.5	67.2	81.9	48.3	44.5	2.7	1.7	149.6	153.4
Statewide Total		11.8	6.2	36.1	33.2	0.9	0.2	103.0	66.0	1661.9	1391.3	670.2	570.1	44.7	33.6	2528.7	2100.7