

March 2016
FY 2015-2016
SB94 JDSAG SUPPLEMENTAL REPORT

Prepared by the Division of Youth Corrections (DYC)
Research and Evaluation Unit
April 28th, 2016



COLORADO

**Office of Children,
Youth & Families**

Division of Youth Corrections

March 2016 SB94 Supplemental Report

DYC Commitment ADP & New Commitments by Judicial District

Region	JD ¹	2016 Population Estimates ²	ADP ³		New Commitments		
			March 2016	YTD	March 2016	YTD	YTD Rate ⁴
<i>Central Region</i>							
	1st	55,832	69.9	69.8	3	30	5.4
	2nd	60,479	132.1	134.4	6	43	7.1
	5th	9,792	8.9	10.6	0	2	2.0
	18th	117,684	77.4	78.8	1	30	2.5
Central Total		243,787	288.4	293.6	10	105	4.3
<i>Northeast Region</i>							
	8th	31,855	45.7	42.1	4	26	8.2
	13th	8,467	9.0	8.6	0	3	3.5
	17th	69,058	76.4	82.2	5	29	4.2
	19th	35,275	56.7	54.5	4	26	7.4
	20th	32,027	14.0	13.7	0	4	1.2
Northeast Total		176,682	201.7	201.1	13	88	5.0
<i>Southern Region</i>							
	3rd	1,880	1.0	1.7	0	0	0.0
	4th	80,316	82.8	91.5	2	27	3.4
	10th	17,742	37.6	38.7	2	17	9.6
	11th	7,203	3.1	4.9	1	3	4.2
	12th	5,251	5.9	5.4	1	3	5.7
	15th	2,174	0.0	1.6	0	1	4.6
	16th	2,795	0.0	0.8	0	1	3.6
Southern Total		117,361	130.4	144.7	6	52	4.4
<i>Western Region</i>							
	6th	6,232	6.8	10.6	0	0	0.0
	7th	10,543	10.9	9.5	1	4	3.8
	9th	9,287	2.0	4.2	0	1	1.1
	14th	5,553	4.0	3.1	0	2	3.6
	21st	15,602	29.7	30.1	1	19	12.2
	22nd	3,036	3.0	4.6	0	1	3.3
Western Total		50,253	56.4	62.0	2	27	5.4
Statewide Total		588,083	676.8	701.4	31	272	4.6

¹ JD represents the judicial district in which the client was committed. Regional totals are a sum of their respective judicial districts. Regional totals reported here may differ slightly from those reported in the Monthly Population Report, where region is defined by active caseloads.

² Source: DOLA 2016 Estimates

³ Due to rounding, totals shown may not be an exact sum of the subtotals.

⁴ Per 10,000 youth in the population

March 2016 SB94 Supplemental Report

DYC Detention ADP and New Detention Admissions by Judicial District

Region	JD	2016 Population Estimates ¹	ADP		New Admits		
			March 2016	YTD	March 2016	YTD	YTD New Admit Rate ²
<i>Central Region</i>							
	1st	55,832	21.1	22.2	75	480	86.0
	2nd	60,479	54.8	53.5	93	835	138.1
	5th	9,792	4.4	3.3	6	35	35.7
	18th	117,684	49.8	40.5	79	768	65.3
Central Total		243,787	130.1	119.5	253	2,118	86.9
<i>Northeast Region</i>							
	8th	31,855	18.0	15.2	41	306	96.1
	13th	8,467	5.2	3.2	11	65	76.8
	17th	69,058	24.1	24.7	53	395	57.2
	19th	35,275	18.1	19.0	49	366	103.8
	20th	32,027	7.1	5.3	35	215	67.1
Northeast Total		176,682	72.5	67.5	189	1,347	76.2
<i>Southern Region</i>							
	3rd	1,880	1.6	1.3	3	16	85.1
	4th	80,316	48.6	41.3	73	573	71.3
	10th	17,742	9.3	11.6	19	283	159.5
	11th	7,203	3.5	3.0	8	101	140.2
	12th	5,251	2.9	2.1	4	44	83.8
	15th	2,174	0.4	1.0	4	15	69.0
	16th	2,795	1.0	0.6	2	13	46.5
Southern Total		117,361	67.3	60.9	113	1,045	89.0
<i>Western Region</i>							
	6th	6,232	3.1	1.4	3	29	46.5
	7th	10,543	3.5	4.2	4	47	44.6
	9th	9,287	4.8	4.3	7	43	46.3
	14th	5,553	1.2	1.1	4	18	32.4
	21st	15,602	11.6	11.1	15	181	116.0
	22nd	3,036	0.3	0.9	2	15	49.4
Western Total		50,253	24.4	23.0	35	333	66.3
<i>Missing JD or Multiple JDs</i>			<i>0.5</i>	<i>1.5</i>			
Statewide Total		588,083	294.8	272.3	590	4,843	82.4

¹ Source: DOLA 2016 Estimates

² Per 10,000 youth in the population

March 2016 SB94 Supplemental Report

DYC Detention LOS by Judicial District

Region	JD	YTD Detention Releases	YTD LOS (days)	LOS (days) Compared to State AVG
<i>Central Region</i>				
	1st	469	14.4	-1.0
	2nd	844	15.9	0.5
	5th	36	23.3	7.9
	18th	774	13.5	-1.8
Central Total		2,123	14.8	-0.5
<i>Northeast Region</i>				
	8th	309	12.9	-2.5
	13th	61	12.7	-2.6
	17th	407	15.7	0.3
	19th	372	16.8	1.4
	20th	213	6.3	-9.1
Northeast Total		1,362	13.7	-1.6
<i>Southern Region</i>				
	3rd	15	23.9	8.5
	4th	565	19.0	3.7
	10th	293	10.8	-4.6
	11th	99	7.6	-7.8
	12th	43	12.0	-3.3
	15th	16	17.1	1.7
	16th	13	10.5	-4.9
Southern Total		1,044	15.3	-0.1
<i>Western Region</i>				
	6th	27	11.2	-4.2
	7th	44	19.7	4.3
	9th	38	24.1	8.7
	14th	17	17.0	1.6
	21st	167	13.9	-1.5
	22nd	16	15.9	0.5
Western Total		309	16.0	0.6
Statewide Total		4,848	15.4	-

March 2016
SB94 JDSAG Supplemental Report

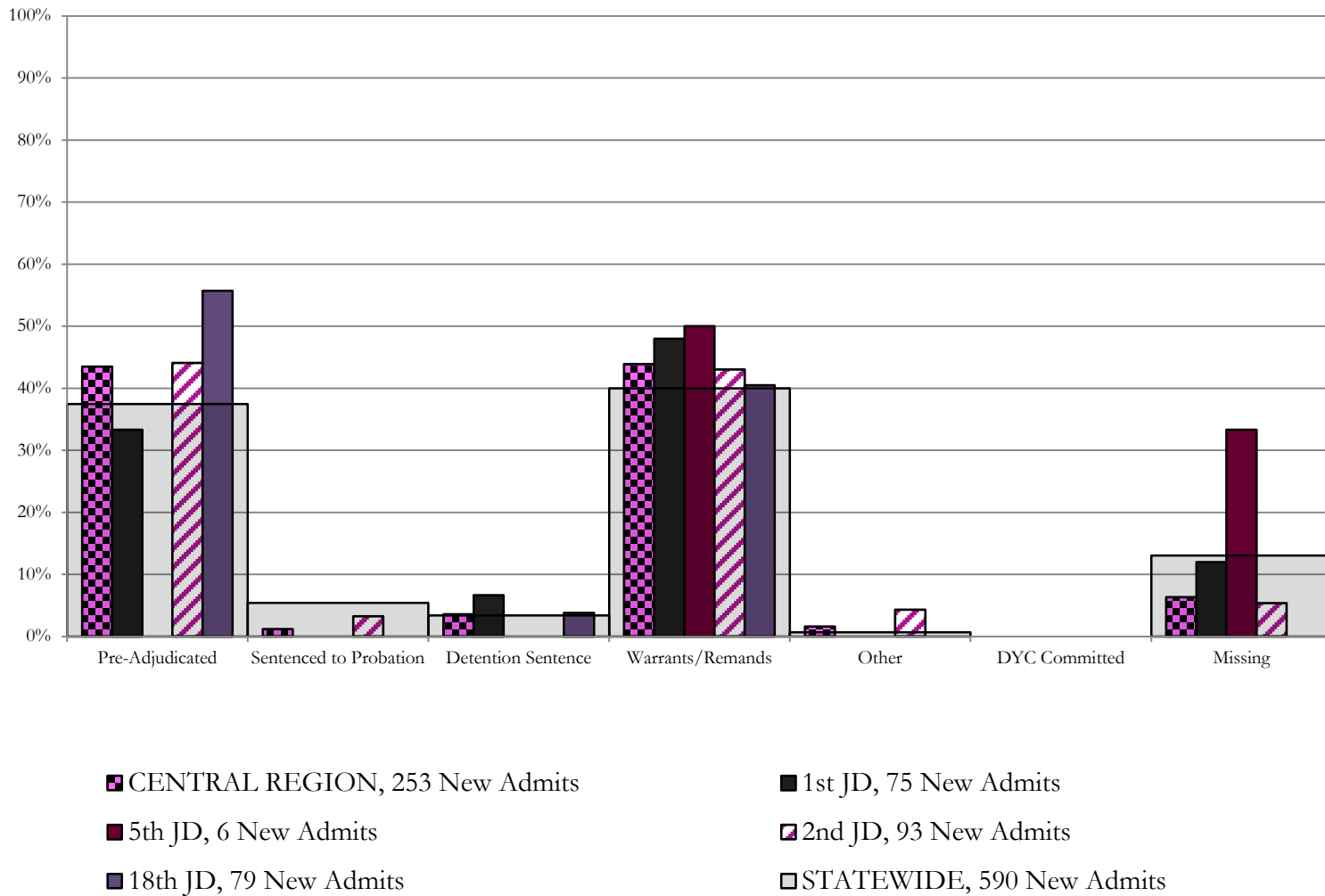
SB94 Reason Detained (RD) by Judicial District

Region	JD	Pre-Adjudicated				Sentenced to Probation				Detention Sentence								Warrants/Remands				Other						DYC Committed				Missing					
		Felony		Misdemeanor		Technical Violator		New Charges		Probation Sentence		Detention Sentence		Valid Court Order (VCO) Truancy		Awaiting DSS (Social Services) Placement		Failure to Appear (FTA)		Failure to Comply (FTC)		Interstate Compact on Juveniles (ICJ) Hold		Immigration Hold		No Bond Hold		Out-of-Country Warrant		Institutional		Parole		Missing			
		#	%	#	%	#	%	#	%	#	%	#	%	#	%	#	%	#	%	#	%	#	%	#	%	#	%	#	%	#	%	#	%	#	%	#	%
Central Region																																					
1st	75	16	21.3%	9	12.0%	0	0.0%	0	0.0%	0	0.0%	5	6.7%	0	0.0%	0	0.0%	3	4.0%	33	44.0%	0	0.0%	0	0.0%	0	0.0%	0	0.0%	0	0.0%	0	0.0%	0	0.0%	9	12.0%
2nd	93	29	31.2%	12	12.9%	2	2.2%	1	1.1%	0	0.0%	0	0.0%	0	0.0%	0	0.0%	10	10.8%	30	32.3%	4	4.3%	0	0.0%	0	0.0%	0	0.0%	0	0.0%	0	0.0%	0	0.0%	5	5.4%
5th	6	0	0.0%	0	0.0%	0	0.0%	0	0.0%	0	0.0%	1	0.0%	0	0.0%	0	0.0%	0	0.0%	3	50.0%	0	0.0%	0	0.0%	0	0.0%	0	0.0%	0	0.0%	0	0.0%	0	0.0%	2	33.3%
18th	79	22	27.8%	22	27.8%	0	0.0%	0	0.0%	0	0.0%	3	3.8%	0	0.0%	0	0.0%	6	7.6%	26	32.9%	0	0.0%	0	0.0%	0	0.0%	0	0.0%	0	0.0%	0	0.0%	0	0.0%	0	0.0%
Central Total	253	67	26%	43	17%	2	0.8%	1	0.4%	0	0.0%	9	3.6%	0	0.0%	0	0.0%	19	8%	92	36%	4	1.6%	0	0.0%	0	0.0%	0	0.0%	0	0.0%	0	0.0%	0	0.0%	16	6.3%
Northeast Region																																					
8th	41	8	19.5%	6	14.6%	0	0.0%	0	0.0%	0	0.0%	1	2.4%	0	0.0%	0	0.0%	2	4.9%	18	43.9%	0	0.0%	0	0.0%	0	0.0%	0	0.0%	0	0.0%	0	0.0%	0	0.0%	6	14.6%
13th	11	4	36.4%	4	36.4%	0	0.0%	0	0.0%	0	0.0%	0	0.0%	0	0.0%	0	0.0%	0	0.0%	2	18.2%	0	0.0%	0	0.0%	0	0.0%	0	0.0%	0	0.0%	0	0.0%	1	9.1%		
17th	53	16	30.2%	6	11.3%	0	0.0%	0	0.0%	0	0.0%	2	3.8%	0	0.0%	0	0.0%	6	11.3%	17	32.1%	0	0.0%	0	0.0%	0	0.0%	0	0.0%	0	0.0%	0	0.0%	0	0.0%	7	13.2%
19th	49	12	24.5%	8	16.3%	21	42.9%	0	0.0%	0	0.0%	1	2.0%	0	0.0%	0	0.0%	0	0.0%	7	14.3%	0	0.0%	0	0.0%	0	0.0%	0	0.0%	0	0.0%	0	0.0%	0	0.0%	0	0.0%
20th	35	0	0.0%	1	2.9%	0	0.0%	0	0.0%	0	0.0%	0	0.0%	0	0.0%	0	0.0%	0	0.0%	0	0.0%	0	0.0%	0	0.0%	0	0.0%	0	0.0%	0	0.0%	0	0.0%	0	0.0%	34	97.1%
Northeast Total	189	40	21%	25	13%	21	11.1%	0	0.0%	0	0.0%	4	2.1%	0	0.0%	0	0.0%	8	4.2%	44	23%	0	0.0%	0	0.0%	0	0.0%	0	0.0%	0	0.0%	0	0.0%	0	0.0%	47	25%
Southern Region																																					
3rd	3	0	0.0%	0	0.0%	1	33.3%	0	0.0%	0	0.0%	0	0.0%	0	0.0%	0	0.0%	1	0.0%	1	0.0%	0	0.0%	0	0.0%	0	0.0%	0	0.0%	0	0.0%	0	0.0%	0	0.0%	0	0.0%
4th	73	17	23.3%	12	16.4%	0	0.0%	1	1.4%	0	0.0%	1	1.4%	1	1.4%	0	0.0%	12	16.4%	26	35.6%	0	0.0%	0	0.0%	0	0.0%	0	0.0%	0	0.0%	0	0.0%	0	0.0%	3	4.1%
10th	19	2	10.5%	1	5.3%	1	5.3%	0	0.0%	0	0.0%	2	10.5%	0	0.0%	0	0.0%	9	47.4%	2	10.5%	0	0.0%	0	0.0%	0	0.0%	0	0.0%	0	0.0%	0	0.0%	0	0.0%	2	10.5%
11th	8	2	25.0%	0	0.0%	0	0.0%	0	0.0%	0	0.0%	0	0.0%	0	0.0%	0	0.0%	1	12.5%	4	50.0%	0	0.0%	0	0.0%	0	0.0%	0	0.0%	0	0.0%	0	0.0%	1	12.5%		
12th	4	1	25.0%	0	0.0%	2	50.0%	0	0.0%	0	0.0%	0	0.0%	0	0.0%	0	0.0%	0	0.0%	1	25.0%	0	0.0%	0	0.0%	0	0.0%	0	0.0%	0	0.0%	0	0.0%	0	0.0%	0	0.0%
15th	4	4	0.0%	0	0.0%	0	0.0%	0	0.0%	0	0.0%	0	0.0%	0	0.0%	0	0.0%	0	0.0%	0	0.0%	0	0.0%	0	0.0%	0	0.0%	0	0.0%	0	0.0%	0	0.0%	0	0.0%	0	0.0%
16th	2	1	0.0%	0	0.0%	0	0.0%	0	0.0%	0	0.0%	0	0.0%	0	0.0%	0	0.0%	1	0.0%	0	0.0%	0	0.0%	0	0.0%	0	0.0%	0	0.0%	0	0.0%	0	0.0%	0	0.0%	0	0.0%
Southern Total	113	27	24%	13	12%	4	3.5%	1	0.9%	0	0.0%	3	2.7%	1	0.9%	0	0.0%	24	21%	34	30%	0	0.0%	0	0.0%	0	0.0%	0	0.0%	0	0.0%	0	0.0%	0	0.0%	6	5%
Western Region																																					
6th	3	1	33.3%	0	0.0%	1	33.3%	0	0.0%	0	0.0%	0	0.0%	0	0.0%	0	0.0%	0	0.0%	0	0.0%	0	0.0%	0	0.0%	0	0.0%	0	0.0%	0	0.0%	0	0.0%	1	33%		
7th	4	1	25.0%	0	0.0%	0	0.0%	0	0.0%	0	0.0%	2	50.0%	0	0.0%	0	0.0%	0	0.0%	0	0.0%	0	0.0%	0	0.0%	0	0.0%	0	0.0%	0	0.0%	0	0.0%	1	25.0%		
9th	7	0	0.0%	0	0.0%	2	28.6%	0	0.0%	0	0.0%	0	0.0%	0	0.0%	0	0.0%	3	42.9%	2	28.6%	0	0.0%	0	0.0%	0	0.0%	0	0.0%	0	0.0%	0	0.0%	0	0.0%	0	0.0%
14th	4	0	0.0%	0	0.0%	0	0.0%	0	0.0%	0	0.0%	0	0.0%	0	0.0%	0	0.0%	1	0.0%	0	0.0%	0	0.0%	0	0.0%	0	0.0%	0	0.0%	0	0.0%	0	0.0%	3	75.0%		
21st	15	3	20.0%	1	6.7%	0	0.0%	0	0.0%	0	0.0%	1	6.7%	0	0.0%	0	0.0%	0	0.0%	8	53.3%	0	0.0%	0	0.0%	0	0.0%	0	0.0%	0	0.0%	0	0.0%	2	13.3%		
22nd	2	0	0.0%	0	0.0%	0	0.0%	0	0.0%	0	0.0%	0	0.0%	0	0.0%	0	0.0%	1	0.0%	0	0.0%	0	0.0%	0	0.0%	0	0.0%	0	0.0%	0	0.0%	0	0.0%	1	50.0%		
Western Total	35	5	14%	1	2.9%	3	8.6%	0	0.0%	0	0.0%	3	8.6%	0	0.0%	0	0.0%	5	14.3%	10	29%	0	0.0%	0	0.0%	0	0.0%	0	0.0%	0	0.0%	0	0.0%	8	23%		
Individual RD Totals	590	139	24%	82	14%	30	5.1%	2	0.3%	0	0.0%	19	3.2%	1	0.2%	0	0.0%	56	9%	180	31%	4	0.7%	0	0.0%	0	0.0%	0	0.0%	0	0.0%	0	0.0%	77	13%		
Statewide Totals	590	221	37.5%	32	5.4%	20	3.4%	0	0.0%	0	0.0%	20	3.4%	1	0.2%	0	0.0%	236	40.0%	4	0.7%	0	0.0%	0	0.0%	0	0.0%	0	0.0%	0	0.0%	77	13%				

Central Region

SB94 Reason Detained by Judicial District

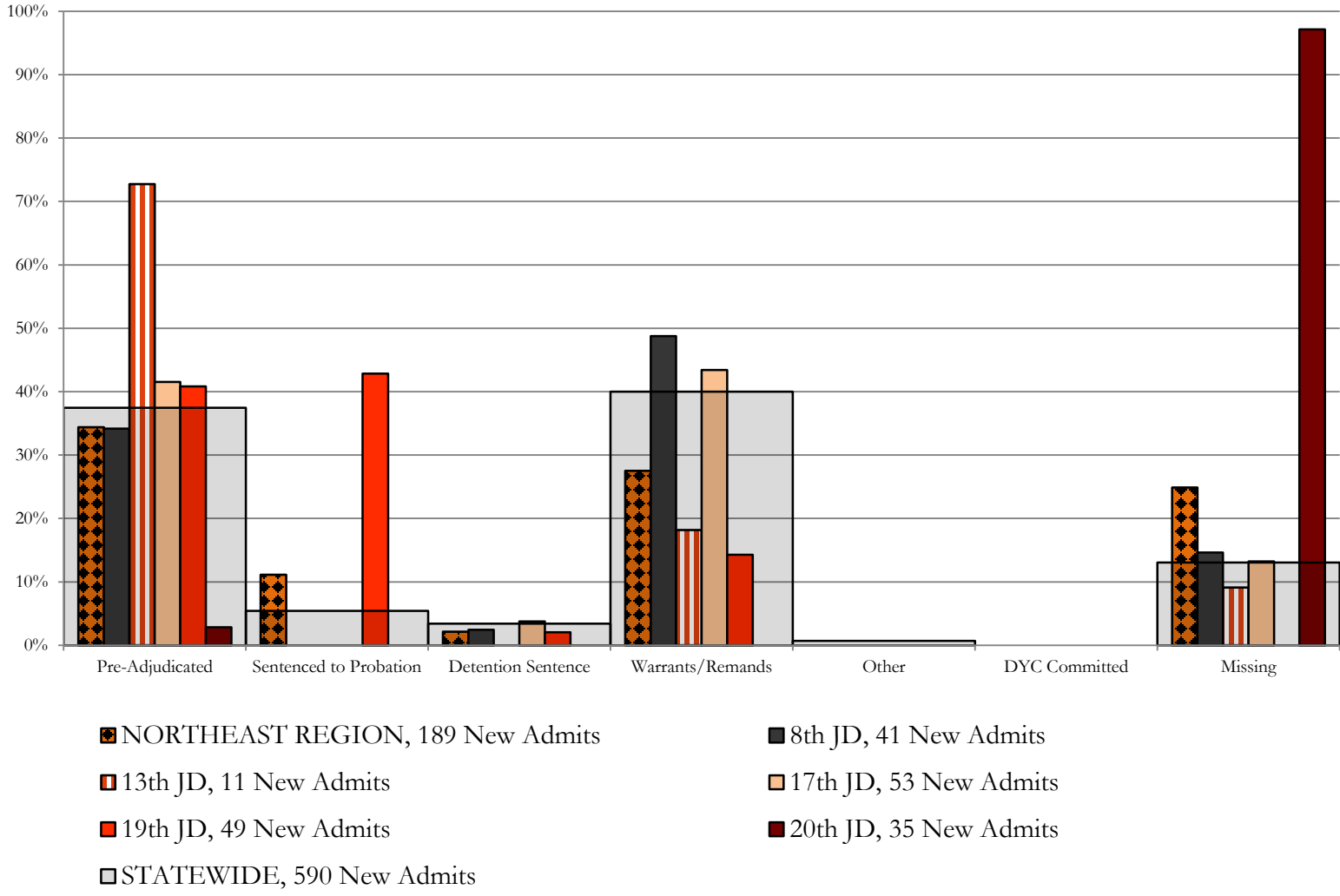
March 2016 New Admits



Northeast Region

SB94 Reason Detained by Judicial District

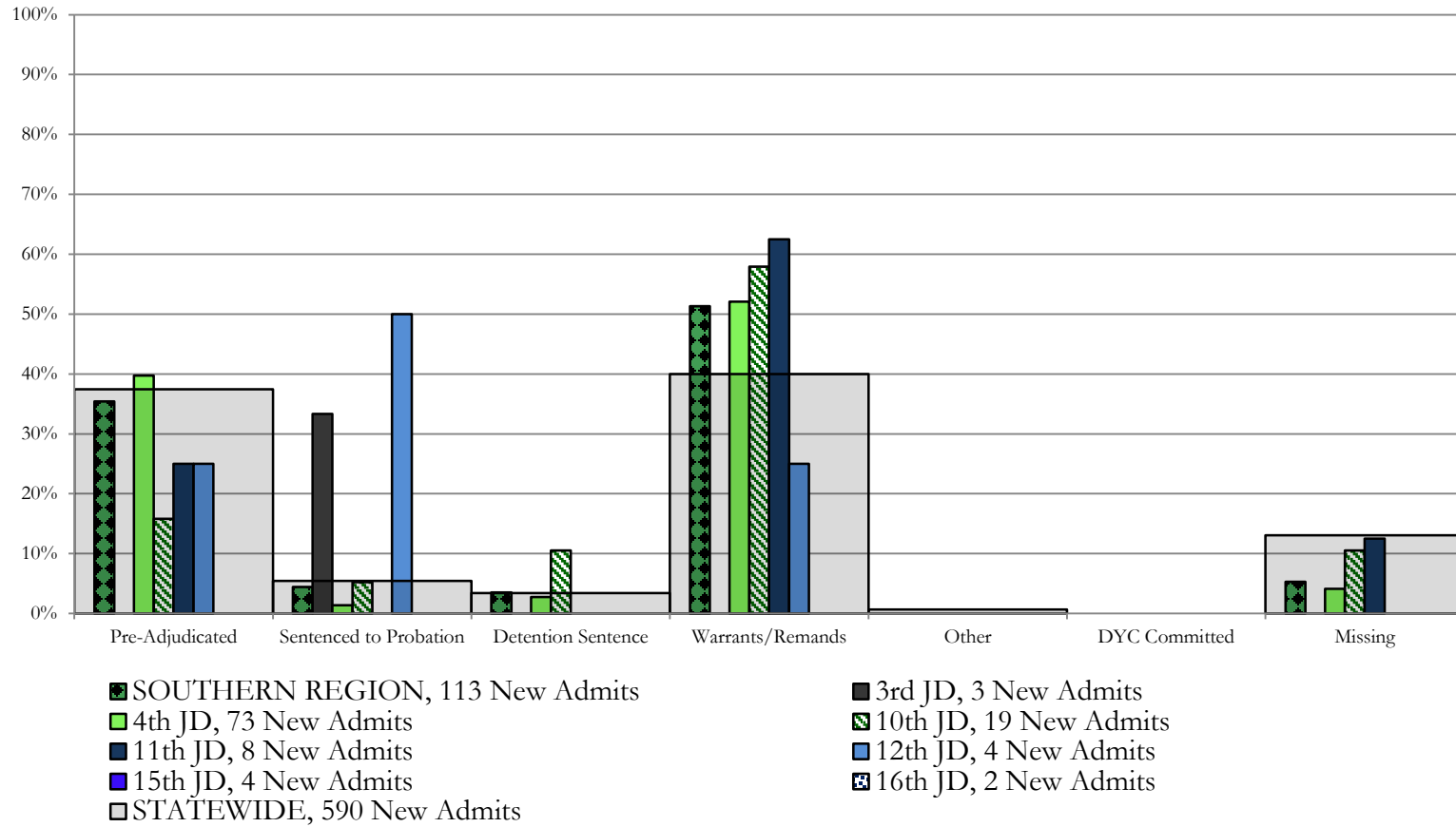
March 2016 New Admits



Southern Region

SB94 Reason Detained by Judicial District

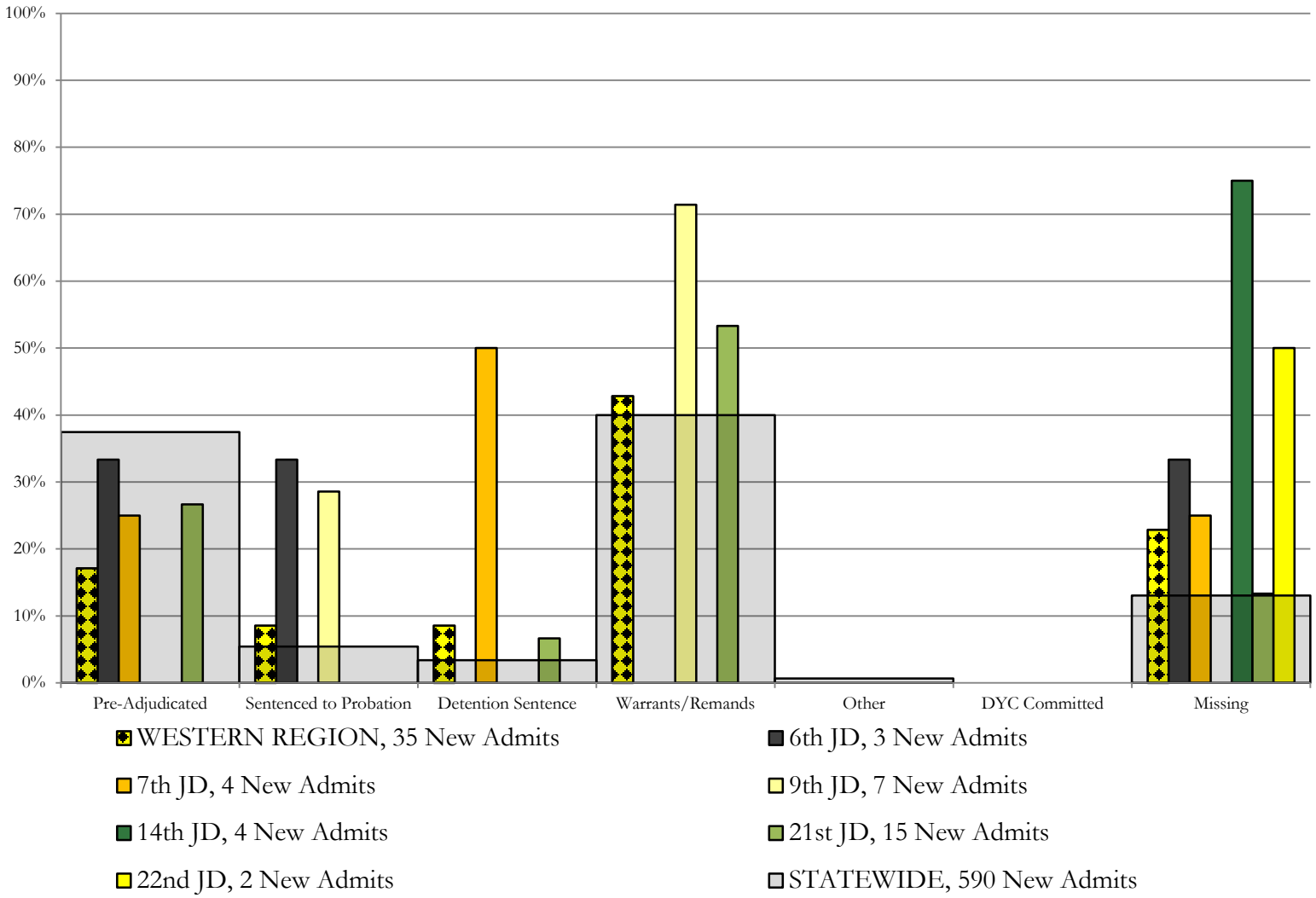
March 2016 New Admits



Western Region

SB94 Reason Detained by Judicial District

March 2016 New Admits



March 2016 SB94 Supplemental Report

DYC Detention Maximum Youth Served by Judicial District¹

Region	JD	Detention Capacity	Detention ADP		Maximum Youth Served on a Single Day ^{2,3}			
			March 2016	YTD	March 2016		YTD	
					Number of Youth	% of Detention Capacity	Number of Youth	% of Detention Capacity
<i>Central Region</i>								
	1st	37	21.1	22.2	31	83.8%	37	100.0%
	2nd	64	54.8	53.5	61	95.3%	66	103.1%
	5th	4	4.4	3.3	6	150.0%	6	150.0%
	18th	61	49.8	40.5	58	95.1%	58	95.1%
Central Region		166	130.1	119.5	142	85.5%	142	85.5%
<i>Northeast Region</i>								
	8th	21	18.0	15.2	23	109.5%	23	109.5%
	13th	5	5.2	3.2	8	160.0%	10	200.0%
	17th	30	24.1	24.7	30	100.0%	31	103.3%
	19th	25	18.1	19.0	23	92.0%	31	124.0%
	20th	13	7.1	5.3	12	92.3%	13	100.0%
Northeast Region		94	72.5	67.5	83	88.3%	95	101.1%
<i>Southern Region</i>								
	3rd	2	1.6	1.3	3	150.0%	3	150.0%
	4th	51	48.6	41.3	54	105.9%	55	107.8%
	10th	13	9.3	11.6	15	115.4%	21	161.5%
	11th	8	3.5	3.0	6	75.0%	8	100.0%
	12th	4	2.9	2.1	5	125.0%	5	125.0%
	15th	2	0.4	1.0	4	200.0%	4	200.0%
	16th	3	1.0	0.6	2	66.7%	2	66.7%
Southern Region		83	67.3	60.9	77	92.8%	80	96.4%
<i>Western Region</i>								
	6th	5	3.1	1.4	4	80.0%	4	80.0%
	7th	7	3.5	4.2	6	85.7%	8	114.3%
	9th	6	4.8	4.3	6	100.0%	10	166.7%
	14th	3	1.2	1.1	4	133.3%	4	133.3%
	21st	14	11.6	11.1	13	92.9%	19	135.7%
	22nd	4	0.3	0.9	1	25.0%	4	100.0%
Western Region		39	24.4	23.0	28	71.8%	30	76.9%
<i>Missing JD or Multiple JDs</i>			0.5	1.5				
Statewide		382	294.8	272.3	316	82.7%	316	82.7%

¹ Maximum youth served is the highest number of youth in detention on a single day during the month or fiscal year.

² Regional figures are not the sum of judicial districts, but represent the maximum count on one day for the entire region.

³ State figures are not the sum of regional figures, but represent the maximum count on one day for the entire state.

March 2016
SB94 Supplemental Report

SB94 Community ADP by Judicial District

Region	JD	Committed		Diversion		ICJ		Municipal		Pre-Adjudicated		Sentenced		VCO		Total	
		March	YTD	March	YTD	March	YTD	March	YTD	March	YTD	March	YTD	March	YTD	March	YTD
<i>Central Region</i>																	
	1st	1.0	0.5	1.0	0.3	0.0	0.0	0.0	0.1	321.3	247.3	21.4	16.7	0.0	0.0	344.7	264.8
	2nd	1.9	1.2	0.0	0.0	0.7	0.1	0.0	0.0	259.9	230.4	77.7	70.8	2.0	1.6	342.3	304.1
	5th	0.0	0.0	0.0	0.0	0.0	0.0	0.0	0.0	14.2	12.5	27.0	28.0	0.0	0.0	41.2	40.5
	18th	1.0	0.7	7.2	10.4	0.0	0.0	1.0	0.6	314.8	287.3	46.0	43.1	11.0	5.7	381.0	347.8
Central Total		3.9	2.3	8.3	10.7	0.7	0.1	1.0	0.7	910.2	777.6	172.1	158.5	13.0	7.3	1109.2	957.2
<i>Northeast Region</i>																	
	8th	0.0	0.0	0.0	0.0	0.0	0.0	0.0	0.0	59.0	46.7	58.9	43.7	0.0	0.0	117.9	90.4
	13th	0.0	0.0	0.0	0.0	0.0	0.0	0.0	0.0	21.9	16.2	9.8	11.4	4.8	5.3	36.5	32.9
	17th	0.0	0.4	1.0	0.1	0.0	0.0	1.0	1.0	154.0	111.5	43.9	48.6	0.0	0.0	199.8	161.6
	19th	1.0	0.4	0.0	0.0	0.0	0.0	0.0	0.0	63.1	60.9	33.9	41.1	1.0	0.4	99.0	102.8
	20th	0.0	0.1	0.0	0.0	0.0	0.0	0.0	0.0	69.4	54.9	42.4	33.7	0.0	0.0	111.8	88.7
Northeast Total		1.0	0.9	1.0	0.1	0.0	0.0	1.0	1.0	367.4	290.2	188.9	178.5	5.8	5.7	565.0	476.4
<i>Southern Region</i>																	
	3rd	0.0	0.0	0.0	0.0	0.0	0.0	0.0	0.0	6.8	7.6	7.1	4.1	1.0	1.2	14.8	12.9
	4th	2.0	1.0	0.0	0.0	0.0	0.0	0.0	0.0	187.6	155.8	123.2	105.9	1.0	1.3	313.8	264.0
	10th	2.1	1.3	0.0	0.0	0.0	0.0	96.6	57.5	22.3	20.5	25.1	17.0	9.2	9.3	155.4	105.6
	11th	0.0	0.0	0.0	0.0	0.0	0.0	0.0	0.2	22.0	16.2	36.5	28.1	5.0	1.0	63.5	45.5
	12th	0.0	0.0	0.0	0.0	0.0	0.0	0.0	0.0	9.8	6.2	1.8	4.5	0.0	0.0	11.7	10.7
	15th	0.0	0.0	0.0	0.0	0.0	0.0	0.0	0.0	6.7	4.2	15.1	7.6	0.0	0.0	21.9	11.8
	16th	0.0	0.0	0.0	0.0	0.0	0.0	0.0	0.0	4.9	3.6	12.3	12.9	5.9	5.1	23.2	21.7
Southern Total		4.1	2.4	0.0	0.0	0.0	0.0	96.6	57.7	260.1	214.2	221.2	180.1	22.1	17.9	604.2	472.3
<i>Western Region</i>																	
	6th	0.0	0.0	0.0	0.1	0.0	0.0	1.0	1.2	8.3	11.0	0.9	0.1	1.0	1.0	11.3	13.4
	7th	0.0	0.0	5.5	4.4	0.0	0.0	1.0	0.9	8.4	11.5	22.8	16.9	2.0	0.6	39.7	34.3
	9th	0.0	0.0	0.0	0.0	0.0	0.0	0.0	0.0	16.1	12.1	6.6	5.0	0.0	0.0	22.7	17.1
	14th	0.0	0.0	18.0	16.6	0.0	0.0	0.0	0.0	3.9	4.7	2.4	1.9	0.0	0.0	24.3	23.2
	21st	0.0	0.0	0.0	0.0	0.0	0.0	3.0	1.2	35.9	41.2	15.5	13.2	0.0	0.0	54.4	55.6
	22nd	0.0	0.0	0.0	0.0	0.0	0.0	0.0	0.0	3.1	2.9	1.0	1.2	0.0	0.0	4.1	4.2
Western Total		0.0	0.0	23.5	21.2	0.0	0.0	5.0	3.3	75.6	83.5	49.2	38.4	3.0	1.6	156.4	147.9
Statewide Total		9.1	5.6	32.8	32.0	0.7	0.1	103.6	62.7	1613.3	1365.4	631.5	555.5	43.9	32.4	2434.8	2053.8