

February 2016  
FY 2015-2016  
SB94 JDSAG SUPPLEMENTAL REPORT

Prepared by the Division of Youth Corrections (DYC)  
Research and Evaluation Unit  
March 25th, 2016



**COLORADO**

**Office of Children,  
Youth & Families**

Division of Youth Corrections

## February 2016 SB94 Supplemental Report

### DYC Commitment ADP & New Commitments by Judicial District

Region	JD <sup>1</sup>	2016 Population Estimates <sup>2</sup>	ADP <sup>3</sup>		New Commitments		
			February 2016	YTD	February 2016	YTD	YTD Rate <sup>4</sup>
<i>Central Region</i>							
	1st	55,832	70.6	69.8	3	27	4.8
	2nd	60,479	129.4	134.7	6	36	6.0
	5th	9,792	9.0	10.8	1	2	2.0
	18th	117,684	76.1	79.0	6	29	2.5
<b>Central Total</b>		<b>243,787</b>	<b>285.1</b>	<b>294.3</b>	<b>16</b>	<b>94</b>	<b>3.9</b>
<i>Northeast Region</i>							
	8th	31,855	42.6	41.7	2	22	6.9
	13th	8,467	8.9	8.6	1	3	3.5
	17th	69,058	73.9	82.9	4	23	3.3
	19th	35,275	53.8	54.2	2	22	6.2
	20th	32,027	15.1	13.6	0	4	1.2
<b>Northeast Total</b>		<b>176,682</b>	<b>194.3</b>	<b>201.0</b>	<b>9</b>	<b>74</b>	<b>4.2</b>
<i>Southern Region</i>							
	3rd	1,880	0.0	1.7	0	0	0.0
	4th	80,316	87.5	92.7	2	25	3.1
	10th	17,742	37.0	38.9	0	15	8.5
	11th	7,203	3.4	5.1	1	2	2.8
	12th	5,251	6.0	5.3	0	2	3.8
	15th	2,174	1.0	1.8	0	1	4.6
	16th	2,795	0.2	0.9	0	1	3.6
<b>Southern Total</b>		<b>117,361</b>	<b>135.1</b>	<b>146.4</b>	<b>3</b>	<b>46</b>	<b>3.9</b>
<i>Western Region</i>							
	6th	6,232	8.1	11.0	0	0	0.0
	7th	10,543	9.4	9.2	0	3	2.8
	9th	9,287	2.7	4.4	0	1	1.1
	14th	5,553	4.0	2.9	0	2	3.6
	21st	15,602	32.3	30.2	1	18	11.5
	22nd	3,036	3.5	4.8	0	1	3.3
<b>Western Total</b>		<b>50,253</b>	<b>59.9</b>	<b>62.6</b>	<b>1</b>	<b>25</b>	<b>5.0</b>
<b>Statewide Total</b>		<b>588,083</b>	<b>674.4</b>	<b>704.4</b>	<b>29</b>	<b>239</b>	<b>4.1</b>

<sup>1</sup> JD represents the judicial district in which the client was committed. Regional totals are a sum of their respective judicial districts. Regional totals reported here may differ slightly from those reported in the Monthly Population Report, where region is defined by active caseloads.

<sup>2</sup> Source: DOLA 2016 Estimates

<sup>3</sup> Due to rounding, totals shown may not be an exact sum of the subtotals.

<sup>4</sup> Per 10,000 youth in the population

## February 2016 SB94 Supplemental Report

### DYC Detention ADP and New Detention Admissions by Judicial District

Region	JD	2016 Population Estimates <sup>1</sup>	ADP		New Admits		
			February 2016	YTD	February 2016	YTD	YTD New Admit Rate <sup>2</sup>
<i>Central Region</i>							
	1st	55,832	18.8	22.4	55	406	72.7
	2nd	60,479	53.7	53.3	92	742	122.7
	5th	9,792	4.1	3.2	1	29	29.6
	18th	117,684	39.8	39.3	79	689	58.5
<b>Central Total</b>		<b>243,787</b>	<b>116.4</b>	<b>118.3</b>	<b>227</b>	<b>1,866</b>	<b>76.5</b>
<i>Northeast Region</i>							
	8th	31,855	18.3	14.8	30	265	83.2
	13th	8,467	2.7	3.0	8	54	63.8
	17th	69,058	17.2	24.8	34	342	49.5
	19th	35,275	18.5	19.2	32	317	89.9
	20th	32,027	3.8	5.0	26	180	56.2
<b>Northeast Total</b>		<b>176,682</b>	<b>60.5</b>	<b>66.8</b>	<b>130</b>	<b>1,158</b>	<b>65.5</b>
<i>Southern Region</i>							
	3rd	1,880	0.8	1.3	2	13	69.1
	4th	80,316	41.2	40.4	64	500	62.3
	10th	17,742	14.9	11.9	27	264	148.8
	11th	7,203	3.4	2.9	10	93	129.1
	12th	5,251	3.2	2.0	7	40	76.2
	15th	2,174	0.1	1.0	1	11	50.6
	16th	2,795	0.1	0.5	1	11	39.4
<b>Southern Total</b>		<b>117,361</b>	<b>63.6</b>	<b>60.1</b>	<b>112</b>	<b>932</b>	<b>79.4</b>
<i>Western Region</i>							
	6th	6,232	2.0	1.2	3	26	41.7
	7th	10,543	5.0	4.3	5	43	40.8
	9th	9,287	4.7	4.2	3	36	38.8
	14th	5,553	1.3	1.1	1	14	25.2
	21st	15,602	10.2	11.0	21	166	106.4
	22nd	3,036	0.4	1.0	3	13	42.8
<b>Western Total</b>		<b>50,253</b>	<b>23.6</b>	<b>22.8</b>	<b>36</b>	<b>298</b>	<b>59.3</b>
<i>Missing JD or Multiple JDs</i>			0.2	1.6			
<b>Statewide Total</b>		<b>588,083</b>	<b>264.4</b>	<b>269.6</b>	<b>505</b>	<b>4,254</b>	<b>72.3</b>

<sup>1</sup> Source: DOLA 2016 Estimates

<sup>2</sup> Per 10,000 youth in the population

## February 2016 SB94 Supplemental Report

DYC Detention LOS by Judicial District				
Region	JD	YTD Detention Releases	YTD LOS (days)	LOS (days) Compared to State AVG
<i>Central Region</i>				
	1st	409	15.6	0.1
	2nd	744	15.5	0.1
	5th	30	23.6	8.2
	18th	688	13.5	-1.9
<b>Central Total</b>		<b>1,871</b>	<b>14.9</b>	<b>-0.5</b>
<i>Northeast Region</i>				
	8th	271	12.7	-2.8
	13th	55	13.4	-2.0
	17th	345	16.4	0.9
	19th	323	17.4	2.0
	20th	181	6.3	-9.2
<b>Northeast Total</b>		<b>1,175</b>	<b>14.1</b>	<b>-1.3</b>
<i>Southern Region</i>				
	3rd	13	24.7	9.3
	4th	490	19.3	3.9
	10th	267	10.1	-5.3
	11th	90	7.5	-8.0
	12th	37	11.4	-4.0
	15th	13	20.5	5.1
	16th	12	11.2	-4.2
<b>Southern Total</b>		<b>922</b>	<b>15.1</b>	<b>-0.3</b>
<i>Western Region</i>				
	6th	25	8.9	-6.5
	7th	39	16.4	1.0
	9th	33	23.7	8.3
	14th	12	20.2	4.7
	21st	154	12.7	-2.7
	22nd	14	17.6	2.2
<b>Western Total</b>		<b>277</b>	<b>14.8</b>	<b>-0.6</b>
<b>Statewide Total</b>		<b>4,248</b>	<b>15.4</b>	<b>-</b>

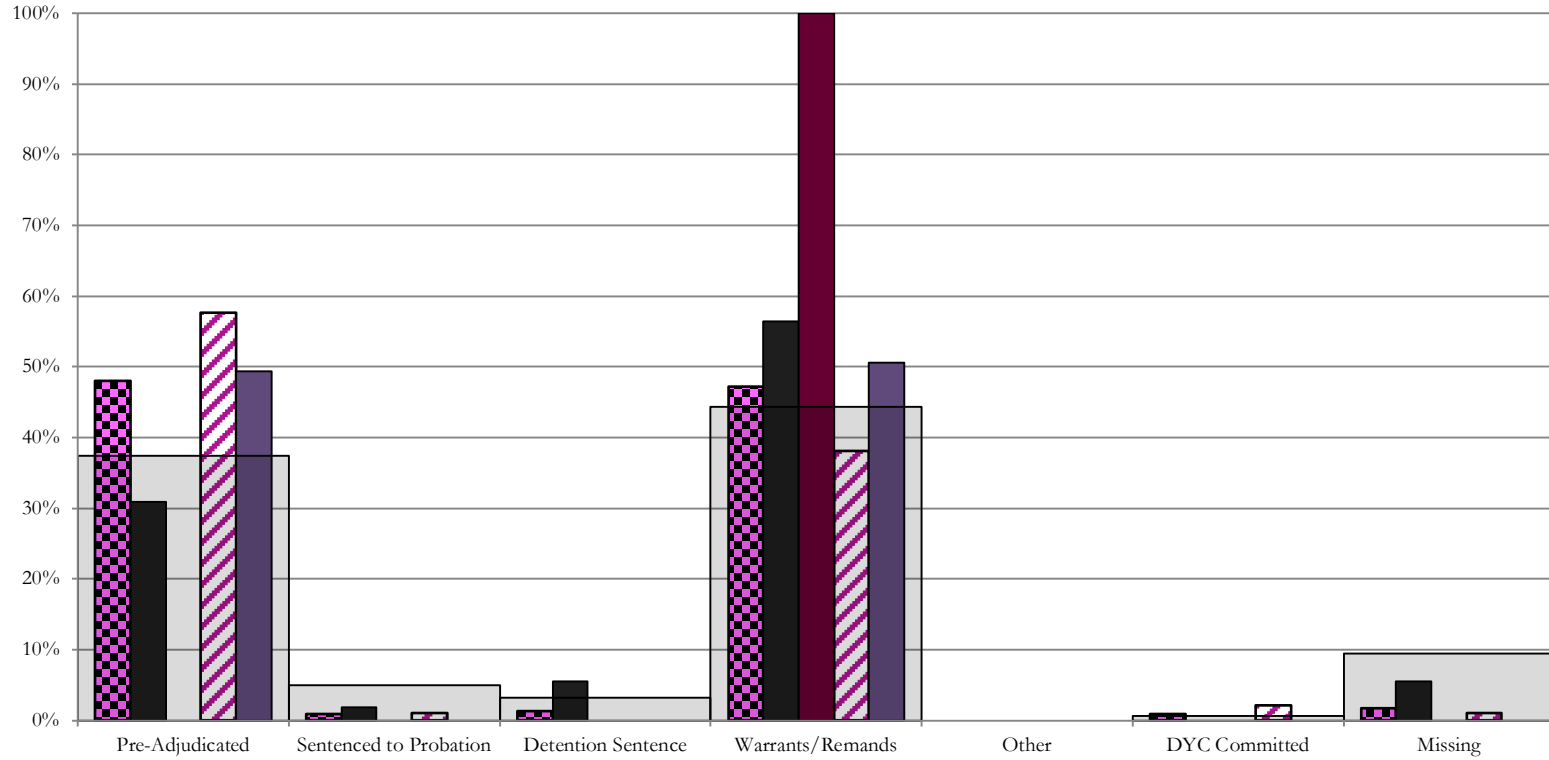
**February 2016**  
**SB94 JDSAG Supplemental Report**

SB94 Reason Detained (RD) by Judicial District

Region	JD	Monthly New Admits	Pre-Adjudicated				Sentenced to Probation				Detention Sentence								Warrants/Remands				Other						DYC Committed		Missing									
			Felony		Misdemeanor		Technical Violator		New Charges		Probation Sentence		Detention Sentence		Valid Court Order (VCO) Truancy		Awaiting DSS (Social Services) Placement		Failure to Appear (FTA)		Failure to Comply (FTC)		Interstate Compact on Juveniles (ICJ) Hold		Immigration Hold		No Bond Hold		Out-of-Country Warrant		Institutional		Parole		Missing					
			#	%	#	%	#	%	#	%	#	%	#	%	#	%	#	%	#	%	#	%	#	%	#	%	#	%	#	%	#	%	#	%	#	%	#	%		
<b>Central Region</b>																																								
	1st	55	8	14.5%	9	16.4%	1	1.8%	0	0.0%	0	0.0%	2	3.6%	0	0.0%	1	1.8%	6	10.9%	25	45.5%	0	0.0%	0	0.0%	0	0.0%	0	0.0%	0	0.0%	0	0.0%	0	0.0%	0	0.0%	3	5.5%
	2nd	92	32	34.8%	21	22.8%	1	1.1%	0	0.0%	0	0.0%	0	0.0%	0	0.0%	0	0.0%	5	5.4%	30	32.6%	0	0.0%	0	0.0%	0	0.0%	0	0.0%	0	0.0%	1	1.1%	1	1.1%	1	1.1%	0	0.0%
	5th	1	0	0.0%	0	0.0%	0	0.0%	0	0.0%	0	0.0%	0	0.0%	0	0.0%	0	0.0%	0	0.0%	1	100.0%	0	0.0%	0	0.0%	0	0.0%	0	0.0%	0	0.0%	0	0.0%	0	0.0%	0	0.0%	0	0.0%
	18th	79	18	22.8%	21	26.6%	0	0.0%	0	0.0%	0	0.0%	0	0.0%	0	0.0%	0	0.0%	9	11.4%	31	39.2%	0	0.0%	0	0.0%	0	0.0%	0	0.0%	0	0.0%	0	0.0%	0	0.0%	0	0.0%	0	0.0%
	<b>Central Total</b>	<b>227</b>	<b>58</b>	<b>26%</b>	<b>51</b>	<b>22%</b>	<b>2</b>	<b>0.9%</b>	<b>0</b>	<b>0.0%</b>	<b>0</b>	<b>0.0%</b>	<b>2</b>	<b>0.9%</b>	<b>0</b>	<b>0.0%</b>	<b>1</b>	<b>0.4%</b>	<b>20</b>	<b>9%</b>	<b>87</b>	<b>38%</b>	<b>0</b>	<b>0.0%</b>	<b>0</b>	<b>0.0%</b>	<b>0</b>	<b>0.0%</b>	<b>0</b>	<b>0.0%</b>	<b>0</b>	<b>0.0%</b>	<b>1</b>	<b>0.4%</b>	<b>1</b>	<b>0.4%</b>	<b>4</b>	<b>1.8%</b>		
<b>Northeast Region</b>																																								
	8th	30	0	0.0%	7	23.3%	0	0.0%	0	0.0%	0	0.0%	0	0.0%	0	0.0%	0	0.0%	5	16.7%	17	56.7%	0	0.0%	0	0.0%	0	0.0%	0	0.0%	0	0.0%	0	0.0%	0	0.0%	0	0.0%	1	3.3%
	13th	8	2	25.0%	4	50.0%	0	0.0%	0	0.0%	0	0.0%	0	0.0%	0	0.0%	0	0.0%	0	0.0%	1	12.5%	0	0.0%	0	0.0%	0	0.0%	0	0.0%	0	0.0%	0	0.0%	0	0.0%	0	0.0%	1	12.5%
	17th	34	9	26.5%	2	5.9%	0	0.0%	0	0.0%	0	0.0%	1	2.9%	0	0.0%	0	0.0%	3	8.8%	15	44.1%	0	0.0%	0	0.0%	0	0.0%	0	0.0%	0	0.0%	0	0.0%	0	0.0%	0	0.0%	5	14.7%
	19th	32	6	18.8%	6	18.8%	13	40.6%	0	0.0%	0	0.0%	3	9.4%	0	0.0%	0	0.0%	2	6.3%	2	6.3%	0	0.0%	0	0.0%	0	0.0%	0	0.0%	0	0.0%	0	0.0%	0	0.0%	0	0.0%	0	0.0%
	20th	26	0	0.0%	0	0.0%	0	0.0%	0	0.0%	0	0.0%	0	0.0%	0	0.0%	0	0.0%	0	0.0%	0	0.0%	0	0.0%	0	0.0%	0	0.0%	0	0.0%	0	0.0%	0	0.0%	0	0.0%	26	100.0%		
	<b>Northeast Total</b>	<b>130</b>	<b>17</b>	<b>13%</b>	<b>19</b>	<b>15%</b>	<b>13</b>	<b>10.0%</b>	<b>0</b>	<b>0.0%</b>	<b>0</b>	<b>0.0%</b>	<b>4</b>	<b>3.1%</b>	<b>0</b>	<b>0.0%</b>	<b>0</b>	<b>0.0%</b>	<b>10</b>	<b>7.7%</b>	<b>35</b>	<b>27%</b>	<b>0</b>	<b>0.0%</b>	<b>0</b>	<b>0.0%</b>	<b>0</b>	<b>0.0%</b>	<b>0</b>	<b>0.0%</b>	<b>0</b>	<b>0.0%</b>	<b>0</b>	<b>0.0%</b>	<b>0</b>	<b>0.0%</b>	<b>32</b>	<b>25%</b>		
<b>Southern Region</b>																																								
	3rd	2	1	50.0%	0	0.0%	0	0.0%	0	0.0%	0	0.0%	0	0.0%	0	0.0%	0	0.0%	0	0.0%	0	0.0%	0	0.0%	0	0.0%	0	0.0%	0	0.0%	0	0.0%	0	0.0%	0	0.0%	1	50.0%		
	4th	64	18	28.1%	1	1.6%	2	3.1%	4	6.3%	0	0.0%	0	0.0%	0	0.0%	0	0.0%	10	15.6%	26	40.6%	0	0.0%	0	0.0%	0	0.0%	0	0.0%	0	0.0%	0	0.0%	1	1.6%	2	3.1%	0	0.0%
	10th	27	5	18.5%	0	0.0%	1	3.7%	0	0.0%	0	0.0%	3	11.1%	0	0.0%	0	0.0%	6	22.2%	9	33.3%	0	0.0%	0	0.0%	0	0.0%	0	0.0%	0	0.0%	0	0.0%	0	0.0%	3	11.1%	0	0.0%
	11th	10	1	10.0%	3	30.0%	0	0.0%	1	10.0%	0	0.0%	0	0.0%	0	0.0%	0	0.0%	1	10.0%	4	40.0%	0	0.0%	0	0.0%	0	0.0%	0	0.0%	0	0.0%	0	0.0%	0	0.0%	0	0.0%	0	0.0%
	12th	7	2	28.6%	4	57.1%	0	0.0%	1	14.3%	0	0.0%	0	0.0%	0	0.0%	0	0.0%	0	0%	0	0.0%	0	0.0%	0	0.0%	0	0.0%	0	0.0%	0	0.0%	0	0.0%	0	0.0%	0	0.0%	0	0.0%
	15th	1	0	0.0%	1	0.0%	0	0.0%	0	0.0%	0	0.0%	0	0.0%	0	0.0%	0	0.0%	0	0.0%	0	0%	0	0.0%	0	0.0%	0	0.0%	0	0.0%	0	0.0%	0	0.0%	0	0.0%	0	0.0%	0	0.0%
	16th	1	1	0.0%	0	0.0%	0	0.0%	0	0.0%	0	0.0%	0	0.0%	0	0.0%	0	0.0%	0	0.0%	0	0%	0	0.0%	0	0.0%	0	0.0%	0	0.0%	0	0.0%	0	0.0%	0	0.0%	0	0.0%	0	0.0%
	<b>Southern Total</b>	<b>112</b>	<b>28</b>	<b>25%</b>	<b>9</b>	<b>8%</b>	<b>3</b>	<b>2.7%</b>	<b>6</b>	<b>5.4%</b>	<b>0</b>	<b>0.0%</b>	<b>3</b>	<b>2.7%</b>	<b>0</b>	<b>0.0%</b>	<b>0</b>	<b>0.0%</b>	<b>17</b>	<b>15%</b>	<b>39</b>	<b>35%</b>	<b>0</b>	<b>0.0%</b>	<b>0</b>	<b>0.0%</b>	<b>0</b>	<b>0.0%</b>	<b>0</b>	<b>0.0%</b>	<b>0</b>	<b>0.0%</b>	<b>1</b>	<b>0.9%</b>	<b>6</b>	<b>5%</b>				
<b>Western Region</b>																																								
	6th	3	0	0.0%	0	0.0%	1	33.3%	0	0.0%	0	0.0%	0	0.0%	0	0.0%	0	0.0%	1	33.3%	0	0.0%	0	0.0%	0	0.0%	0	0.0%	0	0.0%	0	0.0%	0	0.0%	0	0.0%	1	33%		
	7th	5	0	0.0%	0	0.0%	0	0.0%	0	0.0%	0	0.0%	3	60.0%	0	0.0%	0	0.0%	0	0.0%	2	40.0%	0	0.0%	0	0.0%	0	0.0%	0	0.0%	0	0.0%	0	0.0%	0	0.0%	0	0.0%	0	0.0%
	9th	3	1	33.3%	0	0.0%	0	0.0%	0	0.0%	0	0.0%	0	0.0%	0	0.0%	0	0.0%	1	33.3%	0	0.0%	0	0.0%	0	0.0%	0	0.0%	0	0.0%	0	0.0%	0	0.0%	0	0.0%	1	33.3%	0	0.0%
	14th	1	1	0.0%	0	0.0%	0	0.0%	0	0.0%	0	0.0%	0	0.0%	0	0.0%	0	0.0%	0	0.0%	0	0.0%	0	0.0%	0	0.0%	0	0.0%	0	0.0%	0	0.0%	0	0.0%	0	0.0%	0	0.0%	0	0.0%
	21st	21	4	19.0%	1	4.8%	0	0.0%	0	0.0%	0	0.0%	3	14.3%	0	0.0%	0	0.0%	3	14.3%	9	42.9%	0	0.0%	0	0.0%	0	0.0%	0	0.0%	0	0.0%	0	0.0%	0	0.0%	1	4.8%	0	0.0%
	22nd	3	0	0.0%	0	0.0%	0	0.0%	0	0.0%	0	0.0%	0	0.0%	0	0.0%	0	0.0%	0	0.0%	0	0.0%	0	0.0%	0	0.0%	0	0.0%	0	0.0%	0	0.0%	0	0.0%	0	0.0%	3	0.0%		
	<b>Western Total</b>	<b>36</b>	<b>6</b>	<b>17%</b>	<b>1</b>	<b>2.8%</b>	<b>1</b>	<b>2.8%</b>	<b>0</b>	<b>0.0%</b>	<b>0</b>	<b>0.0%</b>	<b>6</b>	<b>16.7%</b>	<b>0</b>	<b>0.0%</b>	<b>0</b>	<b>0.0%</b>	<b>5</b>	<b>13.9%</b>	<b>11</b>	<b>31%</b>	<b>0</b>	<b>0.0%</b>	<b>0</b>	<b>0.0%</b>	<b>0</b>	<b>0.0%</b>	<b>0</b>	<b>0.0%</b>	<b>0</b>	<b>0.0%</b>	<b>0</b>	<b>0.0%</b>	<b>6</b>	<b>17%</b>				
	<b>Individual RD Totals</b>	<b>505</b>	<b>109</b>	<b>22%</b>	<b>80</b>	<b>16%</b>	<b>19</b>	<b>3.8%</b>	<b>6</b>	<b>1.2%</b>	<b>0</b>	<b>0.0%</b>	<b>15</b>	<b>3.0%</b>	<b>0</b>	<b>0.0%</b>	<b>1</b>	<b>0.2%</b>	<b>52</b>	<b>10%</b>	<b>172</b>	<b>34%</b>	<b>0</b>	<b>0.0%</b>	<b>0</b>	<b>0.0%</b>	<b>0</b>	<b>0.0%</b>	<b>0</b>	<b>0.0%</b>	<b>0</b>	<b>0.0%</b>	<b>1</b>	<b>0.2%</b>	<b>2</b>	<b>0.4%</b>	<b>48</b>	<b>10%</b>		
	<b>Statewide Totals</b>	<b>505</b>	<b>189</b>	<b>37.4%</b>	<b>25</b>	<b>5.0%</b>					<b>16</b>		<b>3.2%</b>					<b>224</b>	<b>44.4%</b>	<b>0</b>		<b>0.0%</b>		<b>0.0%</b>	<b>3</b>		<b>0.6%</b>	<b>48</b>	<b>10%</b>											

# Central Region

## SB94 Reason Detained by Judicial District February 2016 New Admits



■ CENTRAL REGION, 227 New Admits

■ 5th JD, 1 New Admits

■ 18th JD, 79 New Admits

■ 1st JD, 55 New Admits

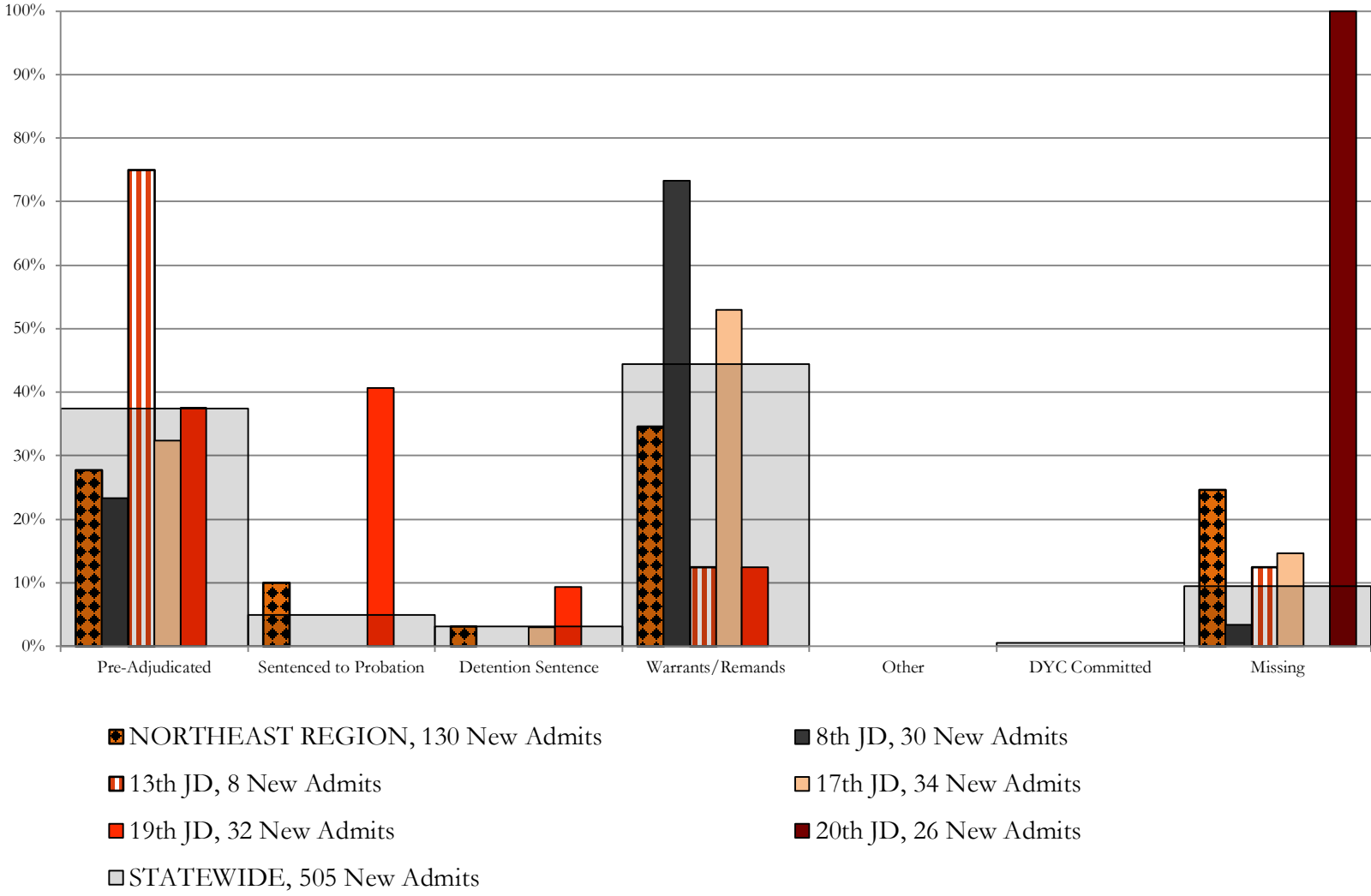
■ 2nd JD, 92 New Admits

■ STATEWIDE, 505 New Admits

# Northeast Region

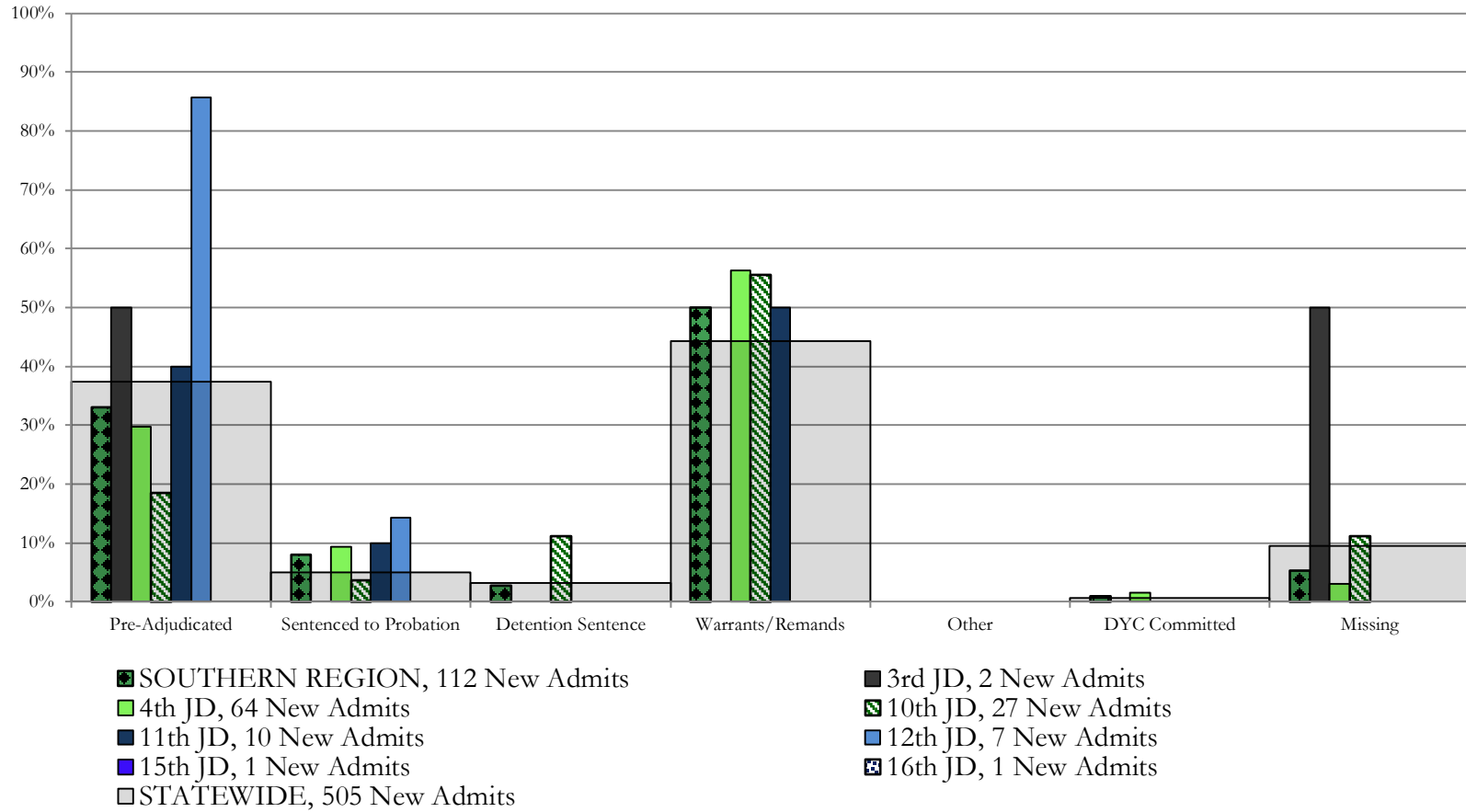
## SB94 Reason Detained by Judicial District

### February 2016 New Admits



## Southern Region

### SB94 Reason Detained by Judicial District February 2016 New Admits

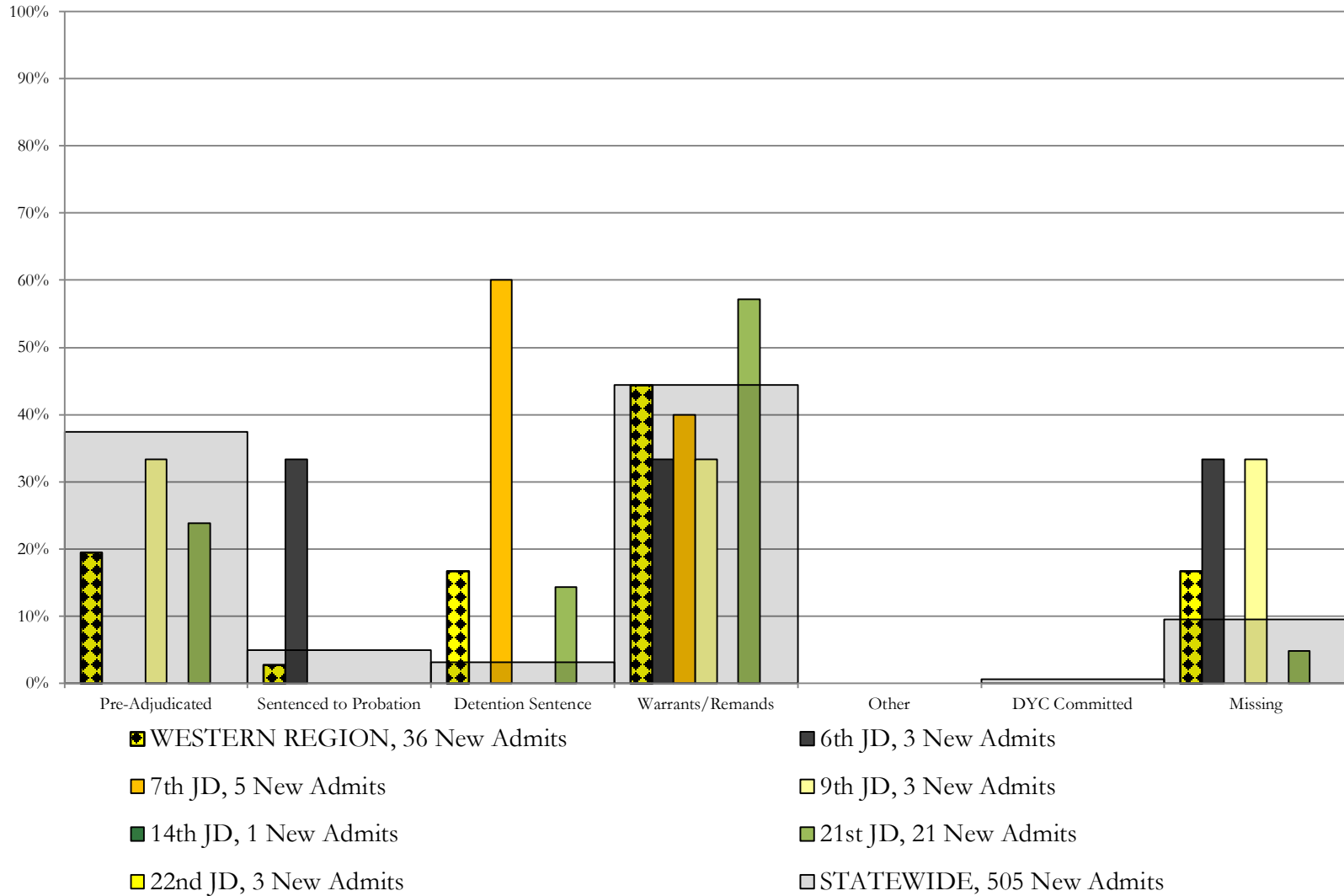




# Western Region

## SB94 Reason Detained by Judicial District

### February 2016 New Admits



# February 2016 SB94 Supplemental Report

## DYC Detention Maximum Youth Served by Judicial District<sup>1</sup>

Region	JD	Detention Capacity	Detention ADP		Maximum Youth Served on a Single Day <sup>2,3</sup>			
			February 2016	YTD	February 2016		YTD	
					Number of Youth	% of Detention Capacity	Number of Youth	% of Detention Capacity
<i>Central Region</i>								
	1st	37	18.8	22.4	24	64.9%	37	100.0%
	2nd	64	53.7	53.3	63	98.4%	66	103.1%
	5th	4	4.1	3.2	6	150.0%	6	150.0%
	18th	61	39.8	39.3	46	75.4%	53	86.9%
<b>Central Region</b>		<b>166</b>	<b>116.4</b>	<b>118.3</b>	<b>127</b>	<b>76.5%</b>	<b>138</b>	<b>83.1%</b>
<i>Northeast Region</i>								
	8th	21	18.3	14.8	23	109.5%	23	109.5%
	13th	5	2.7	3.0	5	100.0%	10	200.0%
	17th	30	17.2	24.8	27	90.0%	31	103.3%
	19th	25	18.5	19.2	22	88.0%	31	124.0%
	20th	13	3.8	5.0	10	76.9%	13	100.0%
<b>Northeast Region</b>		<b>94</b>	<b>60.5</b>	<b>66.8</b>	<b>72</b>	<b>76.6%</b>	<b>95</b>	<b>101.1%</b>
<i>Southern Region</i>								
	3rd	2	0.8	1.3	2	100.0%	3	150.0%
	4th	51	41.2	40.4	53	103.9%	54	105.9%
	10th	13	14.9	11.9	18	138.5%	21	161.5%
	11th	8	3.4	2.9	6	75.0%	8	100.0%
	12th	4	3.2	2.0	5	125.0%	5	125.0%
	15th	2	0.1	1.0	1	50.0%	3	150.0%
	16th	3	0.1	0.5	1	33.3%	2	66.7%
<b>Southern Region</b>		<b>83</b>	<b>63.6</b>	<b>60.1</b>	<b>80</b>	<b>96.4%</b>	<b>80</b>	<b>96.4%</b>
<i>Western Region</i>								
	6th	5	2.0	1.2	3	60.0%	3	60.0%
	7th	7	5.0	4.3	6	85.7%	8	114.3%
	9th	6	4.7	4.2	6	100.0%	10	166.7%
	14th	3	1.3	1.1	2	66.7%	4	133.3%
	21st	14	10.2	11.0	13	92.9%	19	135.7%
	22nd	4	0.4	1.0	1	25.0%	4	100.0%
<b>Western Region</b>		<b>39</b>	<b>23.6</b>	<b>22.8</b>	<b>29</b>	<b>74.4%</b>	<b>30</b>	<b>76.9%</b>
<i>Missing JD or Multiple JDs</i>			0.2	1.6				
<b>Statewide</b>		<b>382</b>	<b>264.4</b>	<b>269.6</b>	<b>299</b>	<b>78.3%</b>	<b>310</b>	<b>81.2%</b>

<sup>1</sup> Maximum youth served is the highest number of youth in detention on a single day during the month or fiscal year.

<sup>2</sup> Regional figures are not the sum of judicial districts, but represent the maximum count on one day for the entire region.

<sup>3</sup> State figures are not the sum of regional figures, but represent the maximum count on one day for the entire state.

**February 2016**  
**SB94 Supplemental Report**

**SB94 Community ADP by Judicial District**

Region	JD	Committed		Diversion		ICJ		Municipal		Pre-Adjudicated		Sentenced		VCO		Total	
		February	YTD	February	YTD	February	YTD	February	YTD	February	YTD	February	YTD	February	YTD	February	YTD
<i>Central Region</i>																	
	1st	1.0	0.4	1.0	0.2	0.0	0.0	0.0	0.1	282.5	234.9	19.8	16.1	0.0	0.0	304.3	251.6
	2nd	1.2	1.1	0.0	0.0	0.0	0.0	0.0	0.0	227.2	228.0	76.6	70.3	1.1	1.5	306.0	300.8
	5th	0.0	0.0	0.0	0.0	0.0	0.0	0.0	0.0	13.1	11.8	27.3	28.1	0.0	0.0	40.3	39.9
	18th	1.0	0.5	10.2	10.8	0.0	0.0	1.0	0.6	302.4	280.9	40.3	42.7	7.8	4.0	362.6	339.5
<b>Central Total</b>		<b>3.1</b>	<b>1.9</b>	<b>11.2</b>	<b>11.0</b>	<b>0.0</b>	<b>0.0</b>	<b>1.0</b>	<b>0.7</b>	<b>825.2</b>	<b>755.6</b>	<b>163.9</b>	<b>157.1</b>	<b>8.9</b>	<b>5.6</b>	<b>1013.3</b>	<b>931.9</b>
<i>Northeast Region</i>																	
	8th	0.0	0.0	1.0	0.2	0.0	0.0	0.0	0.0	50.5	45.3	61.5	43.0	0.0	0.0	113.0	88.5
	13th	0.0	0.0	0.0	0.0	0.0	0.0	0.0	0.0	17.0	15.5	9.4	10.6	4.8	5.4	31.2	31.4
	17th	0.0	0.4	0.0	0.0	0.0	0.0	1.0	1.0	138.8	107.1	41.8	46.7	0.0	0.0	181.5	155.3
	19th	0.6	0.3	0.0	0.0	0.0	0.0	0.0	0.0	66.6	60.2	37.6	42.5	1.0	0.3	105.8	103.3
	20th	0.0	0.1	0.0	0.0	0.0	0.0	0.0	0.0	59.4	52.1	31.7	31.9	0.0	0.0	91.2	84.0
<b>Northeast Total</b>		<b>0.6</b>	<b>0.9</b>	<b>1.0</b>	<b>0.2</b>	<b>0.0</b>	<b>0.0</b>	<b>1.0</b>	<b>1.0</b>	<b>332.3</b>	<b>280.1</b>	<b>181.9</b>	<b>174.7</b>	<b>5.8</b>	<b>5.7</b>	<b>522.7</b>	<b>462.5</b>
<i>Southern Region</i>																	
	3rd	0.0	0.1	0.0	0.0	0.0	0.0	0.0	0.0	15.7	9.3	2.0	3.1	2.0	2.0	19.7	14.5
	4th	1.7	0.9	0.0	0.0	0.0	0.0	0.0	0.0	172.2	143.2	150.4	118.6	1.0	1.3	325.2	264.0
	10th	2.0	1.2	0.0	0.0	0.0	0.0	94.6	56.1	18.3	19.8	22.5	16.1	10.2	9.3	147.6	102.5
	11th	0.0	0.0	0.0	0.0	0.0	0.0	0.0	0.2	23.4	15.5	35.5	27.1	3.9	0.5	62.8	43.3
	12th	0.0	0.0	0.0	0.0	0.0	0.0	0.0	0.0	6.2	5.7	2.0	4.7	0.0	0.0	8.2	10.5
	15th	0.0	0.0	0.0	0.0	0.0	0.0	0.0	0.0	6.1	3.9	12.0	6.6	0.0	0.0	18.2	10.5
	16th	0.0	0.0	0.0	0.0	0.0	0.0	0.0	0.0	4.9	3.5	13.0	14.0	4.0	4.0	21.9	21.5
<b>Southern Total</b>		<b>3.7</b>	<b>2.2</b>	<b>0.0</b>	<b>0.0</b>	<b>0.0</b>	<b>0.0</b>	<b>94.6</b>	<b>56.3</b>	<b>246.9</b>	<b>200.9</b>	<b>237.3</b>	<b>190.3</b>	<b>21.2</b>	<b>17.1</b>	<b>603.7</b>	<b>466.7</b>
<i>Western Region</i>																	
	6th	0.0	0.0	0.0	0.1	0.0	0.0	1.0	1.2	7.5	11.3	0.0	0.0	1.0	1.0	9.5	13.7
	7th	0.0	0.0	5.4	2.2	0.0	0.0	1.4	0.9	9.2	12.0	17.5	16.2	2.0	0.4	35.5	31.6
	9th	0.0	0.0	0.0	0.0	0.0	0.0	0.0	0.0	16.3	11.6	6.8	4.8	0.0	0.0	23.1	16.5
	14th	0.0	0.0	18.0	16.4	0.0	0.0	0.0	0.0	2.8	4.8	2.0	1.8	0.0	0.0	22.8	23.1
	21st	0.0	0.0	0.0	0.0	0.0	0.0	0.0	0.0	44.3	44.5	13.0	11.2	0.0	0.0	57.3	55.6
	22nd	0.0	0.0	0.0	0.0	0.0	0.0	0.0	0.0	2.0	2.9	1.0	1.3	0.0	0.0	3.0	4.2
<b>Western Total</b>		<b>0.0</b>	<b>0.0</b>	<b>23.4</b>	<b>18.8</b>	<b>0.0</b>	<b>0.0</b>	<b>2.4</b>	<b>2.1</b>	<b>82.1</b>	<b>87.1</b>	<b>40.2</b>	<b>35.3</b>	<b>3.0</b>	<b>1.4</b>	<b>151.1</b>	<b>144.7</b>
<b>Statewide Total</b>		<b>7.5</b>	<b>5.0</b>	<b>35.5</b>	<b>29.9</b>	<b>0.0</b>	<b>0.1</b>	<b>99.0</b>	<b>60.0</b>	<b>1486.5</b>	<b>1323.7</b>	<b>623.4</b>	<b>557.4</b>	<b>38.9</b>	<b>29.7</b>	<b>2290.8</b>	<b>2005.8</b>