

January 2016  
FY 2015-2016  
SB94 JDSAG SUPPLEMENTAL REPORT

Prepared by the Division of Youth Corrections (DYC)  
Research and Evaluation Unit  
February 22nd, 2016



**COLORADO**

**Office of Children,  
Youth & Families**

Division of Youth Corrections

# January 2016 SB94 Supplemental Report

## DYC Commitment ADP & New Commitments by Judicial District

Region	JD <sup>1</sup>	2016 Population Estimates <sup>2</sup>	ADP <sup>3</sup>		New Commitments		
			January 2016	YTD	January 2016	YTD	YTD Rate <sup>4</sup>
<i>Central Region</i>							
	1st	55,832	67.1	69.7	3	24	4.3
	2nd	60,479	132.7	135.4	5	30	5.0
	5th	9,792	8.5	10.9	0	1	1.0
	18th	117,684	72.9	78.3	3	23	2.0
<b>Central Total</b>		<b>243,787</b>	<b>281.2</b>	<b>294.2</b>	<b>11</b>	<b>78</b>	<b>3.2</b>
<i>Northeast Region</i>							
	8th	31,855	43.4	41.6	0	20	6.3
	13th	8,467	8.0	8.3	0	2	2.4
	17th	69,058	73.5	84.1	0	19	2.8
	19th	35,275	51.9	54.2	0	20	5.7
	20th	32,027	14.7	13.5	0	4	1.2
<b>Northeast Total</b>		<b>176,682</b>	<b>191.5</b>	<b>201.7</b>	<b>0</b>	<b>65</b>	<b>3.7</b>
<i>Southern Region</i>							
	3rd	1,880	1.0	1.9	0	0	0.0
	4th	80,316	87.6	93.4	5	23	2.9
	10th	17,742	39.8	39.1	0	15	8.5
	11th	7,203	3.1	5.4	0	1	1.4
	12th	5,251	6.0	5.2	0	2	3.8
	15th	2,174	2.0	1.9	0	1	4.6
	16th	2,795	0.0	1.0	0	1	3.6
<b>Southern Total</b>		<b>117,361</b>	<b>139.6</b>	<b>148.0</b>	<b>5</b>	<b>43</b>	<b>3.7</b>
<i>Western Region</i>							
	6th	6,232	8.3	11.4	0	0	0.0
	7th	10,543	9.1	9.2	1	3	2.8
	9th	9,287	4.0	4.7	0	1	1.1
	14th	5,553	3.6	2.8	1	2	3.6
	21st	15,602	34.2	29.9	2	16	10.3
	22nd	3,036	4.5	5.0	0	1	3.3
<b>Western Total</b>		<b>50,253</b>	<b>63.8</b>	<b>63.0</b>	<b>4</b>	<b>23</b>	<b>4.6</b>
<b>Statewide Total</b>		<b>588,083</b>	<b>676.1</b>	<b>706.9</b>	<b>20</b>	<b>209</b>	<b>3.6</b>

<sup>1</sup> JD represents the judicial district in which the client was committed. Regional totals are a sum of their respective judicial districts. Regional totals reported here may differ slightly from those reported in the Monthly Population Report, where region is defined by active caseloads.

<sup>2</sup> Source: DOLA 2016 Estimates

<sup>3</sup> Due to rounding, totals shown may not be an exact sum of the subtotals.

<sup>4</sup> Per 10,000 youth in the population

# January 2016 SB94 Supplemental Report

## DYC Detention ADP and New Detention Admissions by Judicial District

Region	JD	2016 Population Estimates <sup>1</sup>	ADP		New Admits		
			January 2016	YTD	January 2016	YTD	YTD New Admit Rate <sup>2</sup>
<i>Central Region</i>							
	1st	55,832	19.3	23.0	59	352	63.0
	2nd	60,479	55.0	53.3	79	650	107.5
	5th	9,792	3.0	3.3	5	29	29.6
	18th	117,684	40.1	40.4	90	613	52.1
<b>Central Total</b>		<b>243,787</b>	<b>117.3</b>	<b>120.0</b>	<b>233</b>	<b>1,644</b>	<b>67.4</b>
<i>Northeast Region</i>							
	8th	31,855	13.3	14.4	25	235	73.8
	13th	8,467	3.0	3.2	3	47	55.5
	17th	69,058	26.2	25.8	41	308	44.6
	19th	35,275	16.5	19.3	39	285	80.8
	20th	32,027	3.1	5.2	9	154	48.1
<b>Northeast Total</b>		<b>176,682</b>	<b>62.2</b>	<b>67.9</b>	<b>117</b>	<b>1,029</b>	<b>58.2</b>
<i>Southern Region</i>							
	3rd	1,880	0.3	1.3	1	11	58.5
	4th	80,316	40.0	40.3	59	436	54.3
	10th	17,742	10.9	11.5	28	237	133.6
	11th	7,203	5.0	2.9	13	83	115.2
	12th	5,251	2.8	1.8	5	33	62.8
	15th	2,174	0.9	1.2	1	10	46.0
	16th	2,795	0.3	0.6	4	10	35.8
<b>Southern Total</b>		<b>117,361</b>	<b>60.3</b>	<b>59.6</b>	<b>111</b>	<b>820</b>	<b>69.9</b>
<i>Western Region</i>							
	6th	6,232	0.9	1.1	3	23	36.9
	7th	10,543	5.0	4.2	3	38	36.0
	9th	9,287	5.3	4.2	7	33	35.5
	14th	5,553	0.8	1.1	1	13	23.4
	21st	15,602	7.2	11.1	19	145	92.9
	22nd	3,036	0.0	1.1	0	10	32.9
<b>Western Total</b>		<b>50,253</b>	<b>19.4</b>	<b>22.7</b>	<b>33</b>	<b>262</b>	<b>52.1</b>
<i>Missing JD or Multiple JDs</i>			<i>0.3</i>	<i>1.8</i>			
<b>Statewide Total</b>		<b>588,083</b>	<b>259.4</b>	<b>272.0</b>	<b>494</b>	<b>3,755</b>	<b>63.9</b>

<sup>1</sup> Source: DOLA 2016 Estimates

<sup>2</sup> Per 10,000 youth in the population

# January 2016 SB94 Supplemental Report

DYC Detention LOS by Judicial District				
Region	JD	YTD Detention Releases	YTD LOS (days)	LOS (days) Compared to State AVG
<i>Central Region</i>				
	1st	346	16.0	0.6
	2nd	660	15.6	0.1
	5th	26	25.4	10.0
	18th	612	13.6	-1.8
<b>Central Total</b>		<b>1,644</b>	<b>15.1</b>	<b>-0.3</b>
<i>Northeast Region</i>				
	8th	240	12.5	-2.9
	13th	49	14.1	-1.3
	17th	310	15.6	0.1
	19th	288	17.5	2.0
	20th	157	6.7	-8.8
<b>Northeast Total</b>		<b>1,044</b>	<b>14.0</b>	<b>-1.5</b>
<i>Southern Region</i>				
	3rd	12	26.6	11.2
	4th	441	18.8	3.4
	10th	242	9.5	-5.9
	11th	81	6.5	-8.9
	12th	31	10.1	-5.3
	15th	12	22.2	6.7
	16th	11	12.2	-3.3
<b>Southern Total</b>		<b>830</b>	<b>14.7</b>	<b>-0.8</b>
<i>Western Region</i>				
	6th	21	9.3	-6.1
	7th	36	17.4	1.9
	9th	28	26.3	10.9
	14th	11	19.1	3.6
	21st	136	13.4	-2.1
	22nd	11	21.6	6.1
<b>Western Total</b>		<b>243</b>	<b>15.8</b>	<b>0.3</b>
<b>Statewide Total</b>		<b>3,762</b>	<b>15.5</b>	<b>-</b>

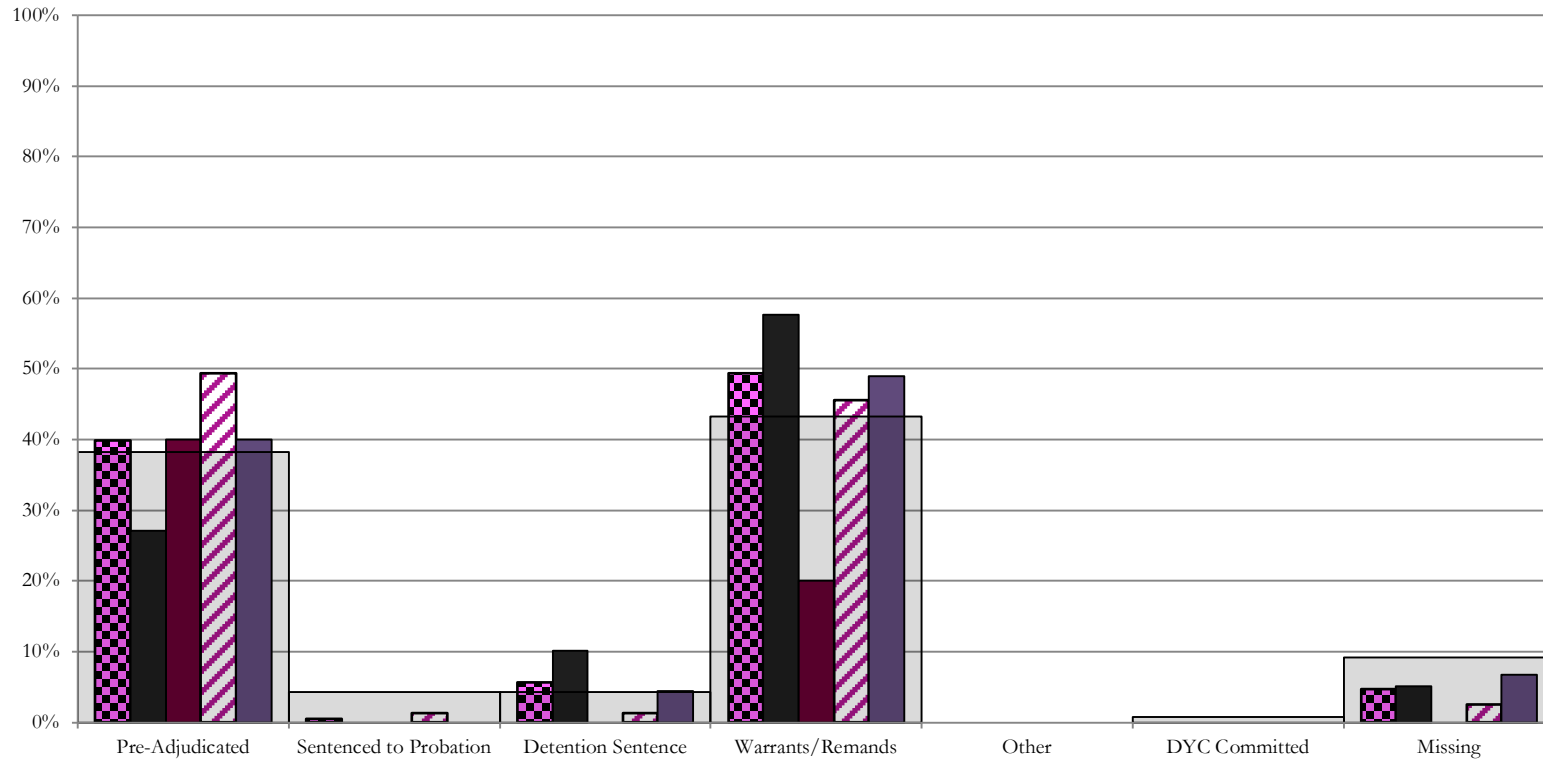
## January 2016 SB94 JDSAG Supplemental Report

SB94 Reason Detained (RD) by Judicial District

Region	JD	Pre-Adjudicated				Sentenced to Probation				Detention Sentence								Warrants/Remands				Other						DYC Committed		Missing								
		Felony		Misdemeanor		Technical Violator		New Charges		Probation Sentence		Detention Sentence		Valid Court Order (VCO) Truancy		Awaiting DSS (Social Services) Placement		Failure to Appear (FTA)		Failure to Comply (FTC)		Interstate Compact on Juveniles (ICJ) Hold		Immigration Hold		No Bond Hold		Out-of-Country Warrant		Institutional		Parole		Missing				
		#	%	#	%	#	%	#	%	#	%	#	%	#	%	#	%	#	%	#	%	#	%	#	%	#	%	#	%	#	%	#	%	#	%	#	%	
<b>Central Region</b>																																						
	1st	59	7	11.9%	9	15.3%	0	0.0%	0	0.0%	0	0.0%	6	10.2%	0	0.0%	0	0.0%	8	13.6%	26	44.1%	0	0.0%	0	0.0%	0	0.0%	0	0.0%	0	0.0%	0	0.0%	0	0.0%	3	5.1%
	2nd	79	30	38.0%	9	11.4%	0	0.0%	1	1.3%	0	0.0%	1	1.3%	0	0.0%	0	0.0%	12	15.2%	24	30.4%	0	0.0%	0	0.0%	0	0.0%	0	0.0%	0	0.0%	0	0.0%	0	0.0%	2	2.5%
	5th	5	2	40.0%	0	0.0%	0	0.0%	0	0.0%	0	0.0%	2	0.0%	0	0.0%	0	0.0%	0	0.0%	1	20.0%	0	0.0%	0	0.0%	0	0.0%	0	0.0%	0	0.0%	0	0.0%	0	0.0%	0	0.0%
	18th	90	19	21.1%	17	18.9%	0	0.0%	0	0.0%	0	0.0%	4	4.4%	0	0.0%	0	0.0%	10	11.1%	34	37.8%	0	0.0%	0	0.0%	0	0.0%	0	0.0%	0	0.0%	0	0.0%	0	0.0%	6	6.7%
	<b>Central Total</b>	<b>233</b>	<b>58</b>	<b>25%</b>	<b>35</b>	<b>15%</b>	<b>0</b>	<b>0.0%</b>	<b>1</b>	<b>0.4%</b>	<b>0</b>	<b>0.0%</b>	<b>13</b>	<b>5.6%</b>	<b>0</b>	<b>0.0%</b>	<b>0</b>	<b>0.0%</b>	<b>30</b>	<b>13%</b>	<b>85</b>	<b>36%</b>	<b>0</b>	<b>0.0%</b>	<b>0</b>	<b>0.0%</b>	<b>0</b>	<b>0.0%</b>	<b>0</b>	<b>0.0%</b>	<b>0</b>	<b>0.0%</b>	<b>0</b>	<b>0.0%</b>	<b>11</b>	<b>4.7%</b>		
<b>Northeast Region</b>																																						
	8th	25	3	12.0%	2	8.0%	0	0.0%	0	0.0%	0	0.0%	3	12.0%	0	0.0%	0	0.0%	2	8.0%	12	48.0%	0	0.0%	0	0.0%	0	0.0%	0	0.0%	0	0.0%	0	0.0%	0	0.0%	3	12.0%
	13th	3	1	33.3%	1	33.3%	0	0.0%	0	0.0%	0	0.0%	0	0.0%	0	0.0%	0	0.0%	0	0.0%	1	33.3%	0	0.0%	0	0.0%	0	0.0%	0	0.0%	0	0.0%	0	0.0%	0	0.0%	0	0.0%
	17th	41	10	24.4%	4	9.8%	0	0.0%	0	0.0%	0	0.0%	0	0.0%	0	0.0%	0	0.0%	7	17.1%	16	39.0%	0	0.0%	0	0.0%	0	0.0%	0	0.0%	0	0.0%	0	0.0%	0	0.0%	5	12.2%
	19th	39	10	25.6%	11	28.2%	13	33.3%	0	0.0%	0	0.0%	1	2.6%	0	0.0%	0	0.0%	1	2.6%	3	7.7%	0	0.0%	0	0.0%	0	0.0%	0	0.0%	0	0.0%	0	0.0%	0	0.0%	0	0.0%
	20th	9	0	0.0%	0	0.0%	0	0.0%	0	0.0%	0	0.0%	0	0.0%	0	0.0%	0	0.0%	0	0.0%	0	0.0%	0	0.0%	0	0.0%	0	0.0%	0	0.0%	0	0.0%	0	0.0%	9	100.0%		
	<b>Northeast Total</b>	<b>117</b>	<b>24</b>	<b>21%</b>	<b>18</b>	<b>15%</b>	<b>13</b>	<b>11.1%</b>	<b>0</b>	<b>0.0%</b>	<b>0</b>	<b>0.0%</b>	<b>4</b>	<b>3.4%</b>	<b>0</b>	<b>0.0%</b>	<b>0</b>	<b>0.0%</b>	<b>10</b>	<b>8.5%</b>	<b>32</b>	<b>27%</b>	<b>0</b>	<b>0.0%</b>	<b>0</b>	<b>0.0%</b>	<b>0</b>	<b>0.0%</b>	<b>0</b>	<b>0.0%</b>	<b>0</b>	<b>0.0%</b>	<b>0</b>	<b>0.0%</b>	<b>16</b>	<b>14%</b>		
<b>Southern Region</b>																																						
	3rd	1	1	100.0%	0	0.0%	0	0.0%	0	0.0%	0	0.0%	0	0.0%	0	0.0%	0	0.0%	0	0.0%	0	0.0%	0	0.0%	0	0.0%	0	0.0%	0	0.0%	0	0.0%	0	0.0%	0	0.0%		
	4th	59	18	30.5%	8	13.6%	0	0.0%	2	3.4%	0	0.0%	0	0.0%	0	0.0%	0	0.0%	5	8.5%	21	35.6%	0	0.0%	0	0.0%	0	0.0%	0	0.0%	3	5.1%	1	1.7%	1	1.7%		
	10th	28	2	7.1%	2	7.1%	0	0.0%	0	0.0%	0	0.0%	3	10.7%	0	0.0%	0	0.0%	8	28.6%	9	32.1%	0	0.0%	0	0.0%	0	0.0%	0	0.0%	0	0.0%	0	0.0%	4	14.3%		
	11th	13	6	46.2%	2	15.4%	0	0.0%	0	0.0%	0	0.0%	0	0.0%	0	0.0%	0	0.0%	0	0.0%	4	30.8%	0	0.0%	0	0.0%	0	0.0%	0	0.0%	0	0.0%	0	0.0%	1	7.7%		
	12th	5	0	0.0%	1	20.0%	4	80.0%	0	0.0%	0	0.0%	0	0.0%	0	0.0%	0	0.0%	0	0%	0	0.0%	0	0.0%	0	0.0%	0	0.0%	0	0.0%	0	0.0%	0	0.0%	0	0.0%		
	15th	1	0	0.0%	0	0.0%	0	0.0%	0	0.0%	0	0.0%	0	0.0%	0	0.0%	0	0.0%	0	0.0%	0	0%	0	0.0%	0	0.0%	0	0.0%	0	0.0%	0	0.0%	0	0.0%	1	0.0%		
	16th	4	2	0.0%	0	0.0%	0	0.0%	0	0.0%	0	0.0%	0	0.0%	0	0.0%	0	0.0%	1	0.0%	0	0%	0	0.0%	0	0.0%	0	0.0%	0	0.0%	0	0.0%	0	0.0%	1	0.0%		
	<b>Southern Total</b>	<b>111</b>	<b>29</b>	<b>26%</b>	<b>13</b>	<b>12%</b>	<b>4</b>	<b>3.6%</b>	<b>2</b>	<b>1.8%</b>	<b>0</b>	<b>0.0%</b>	<b>3</b>	<b>2.7%</b>	<b>0</b>	<b>0.0%</b>	<b>0</b>	<b>0.0%</b>	<b>14</b>	<b>13%</b>	<b>34</b>	<b>31%</b>	<b>0</b>	<b>0.0%</b>	<b>0</b>	<b>0.0%</b>	<b>0</b>	<b>0.0%</b>	<b>0</b>	<b>0.0%</b>	<b>3</b>	<b>2.7%</b>	<b>1</b>	<b>0.9%</b>	<b>8</b>	<b>7%</b>		
<b>Western Region</b>																																						
	6th	3	0	0.0%	0	0.0%	0	0.0%	0	0.0%	0	0.0%	0	0.0%	0	0.0%	0	0.0%	0	0.0%	0	0.0%	0	0.0%	0	0.0%	0	0.0%	0	0.0%	0	0.0%	0	0.0%	3	100%		
	7th	3	1	33.3%	0	0.0%	0	0.0%	0	0.0%	0	0.0%	0	0.0%	0	0.0%	0	0.0%	0	0.0%	2	66.7%	0	0.0%	0	0.0%	0	0.0%	0	0.0%	0	0.0%	0	0.0%	0	0.0%		
	9th	7	1	14.3%	3	42.9%	0	0.0%	0	0.0%	0	0.0%	1	14.3%	0	0.0%	0	0.0%	1	14.3%	0	0.0%	0	0.0%	0	0.0%	0	0.0%	0	0.0%	0	0.0%	0	0.0%	1	14.3%		
	14th	1	0	0.0%	0	0.0%	0	0.0%	0	0.0%	0	0.0%	0	0.0%	0	0.0%	0	0.0%	0	0.0%	0	0.0%	0	0.0%	0	0.0%	0	0.0%	0	0.0%	0	0.0%	0	0.0%	1	100.0%		
	21st	19	6	31.6%	1	5.3%	1	5.3%	0	0.0%	0	0.0%	0	0.0%	0	0.0%	0	0.0%	0	0.0%	6	31.6%	0	0.0%	0	0.0%	0	0.0%	0	0.0%	0	0.0%	0	0.0%	5	26.3%		
	22nd	0	0	0.0%	0	0.0%	0	0.0%	0	0.0%	0	0.0%	0	0.0%	0	0.0%	0	0.0%	0	0.0%	0	0.0%	0	0.0%	0	0.0%	0	0.0%	0	0.0%	0	0.0%	0	0.0%	0	0.0%		
	<b>Western Total</b>	<b>33</b>	<b>8</b>	<b>24%</b>	<b>4</b>	<b>12.1%</b>	<b>1</b>	<b>3.0%</b>	<b>0</b>	<b>0.0%</b>	<b>0</b>	<b>0.0%</b>	<b>1</b>	<b>3.0%</b>	<b>0</b>	<b>0.0%</b>	<b>0</b>	<b>0.0%</b>	<b>1</b>	<b>3.0%</b>	<b>8</b>	<b>24%</b>	<b>0</b>	<b>0.0%</b>	<b>0</b>	<b>0.0%</b>	<b>0</b>	<b>0.0%</b>	<b>0</b>	<b>0.0%</b>	<b>0</b>	<b>0.0%</b>	<b>10</b>	<b>30%</b>				
	<b>Individual RD Totals</b>	<b>494</b>	<b>119</b>	<b>24%</b>	<b>70</b>	<b>14%</b>	<b>18</b>	<b>3.6%</b>	<b>3</b>	<b>0.6%</b>	<b>0</b>	<b>0.0%</b>	<b>21</b>	<b>4.3%</b>	<b>0</b>	<b>0.0%</b>	<b>0</b>	<b>0.0%</b>	<b>55</b>	<b>11%</b>	<b>159</b>	<b>32%</b>	<b>0</b>	<b>0.0%</b>	<b>0</b>	<b>0.0%</b>	<b>0</b>	<b>0.0%</b>	<b>0</b>	<b>0.0%</b>	<b>3</b>	<b>0.6%</b>	<b>1</b>	<b>0.2%</b>	<b>45</b>	<b>9%</b>		
	<b>Statewide Totals</b>	<b>494</b>	<b>189</b>	<b>38.3%</b>	<b>21</b>	<b>4.3%</b>	<b>21</b>	<b>4.3%</b>	<b>21</b>	<b>4.3%</b>	<b>21</b>	<b>4.3%</b>	<b>21</b>	<b>4.3%</b>	<b>21</b>	<b>4.3%</b>	<b>21</b>	<b>4.3%</b>	<b>214</b>	<b>43.3%</b>	<b>0</b>	<b>0.0%</b>	<b>0</b>	<b>0.0%</b>	<b>0</b>	<b>0.0%</b>	<b>4</b>	<b>0.8%</b>	<b>45</b>	<b>9%</b>								

# Central Region

## SB94 Reason Detained by Judicial District January 2016 New Admits



■ CENTRAL REGION, 233 New Admits

■ 5th JD, 5 New Admits

■ 18th JD, 90 New Admits

■ 1st JD, 59 New Admits

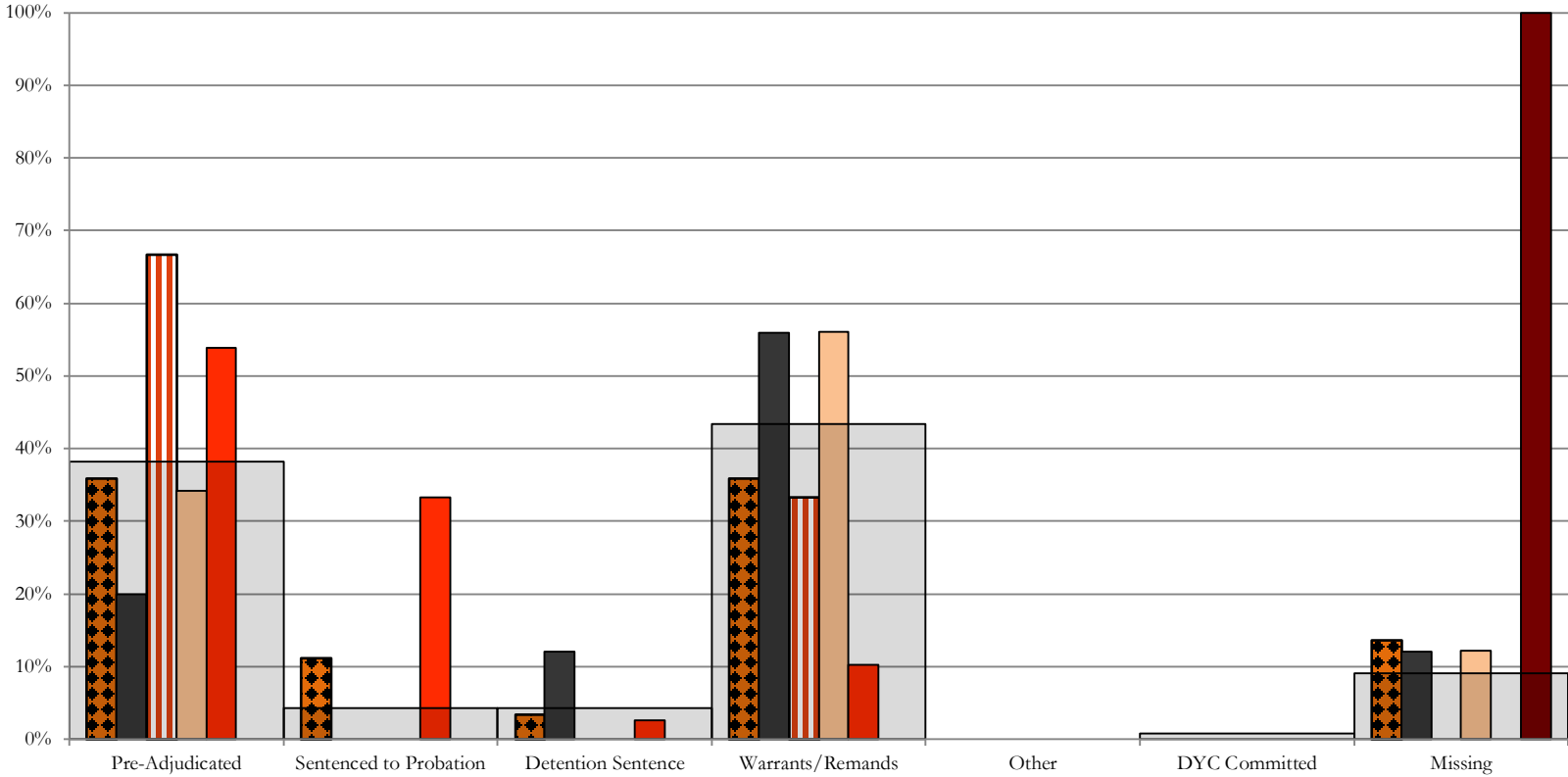
■ 2nd JD, 79 New Admits

□ STATEWIDE, 494 New Admits

# Northeast Region

## SB94 Reason Detained by Judicial District

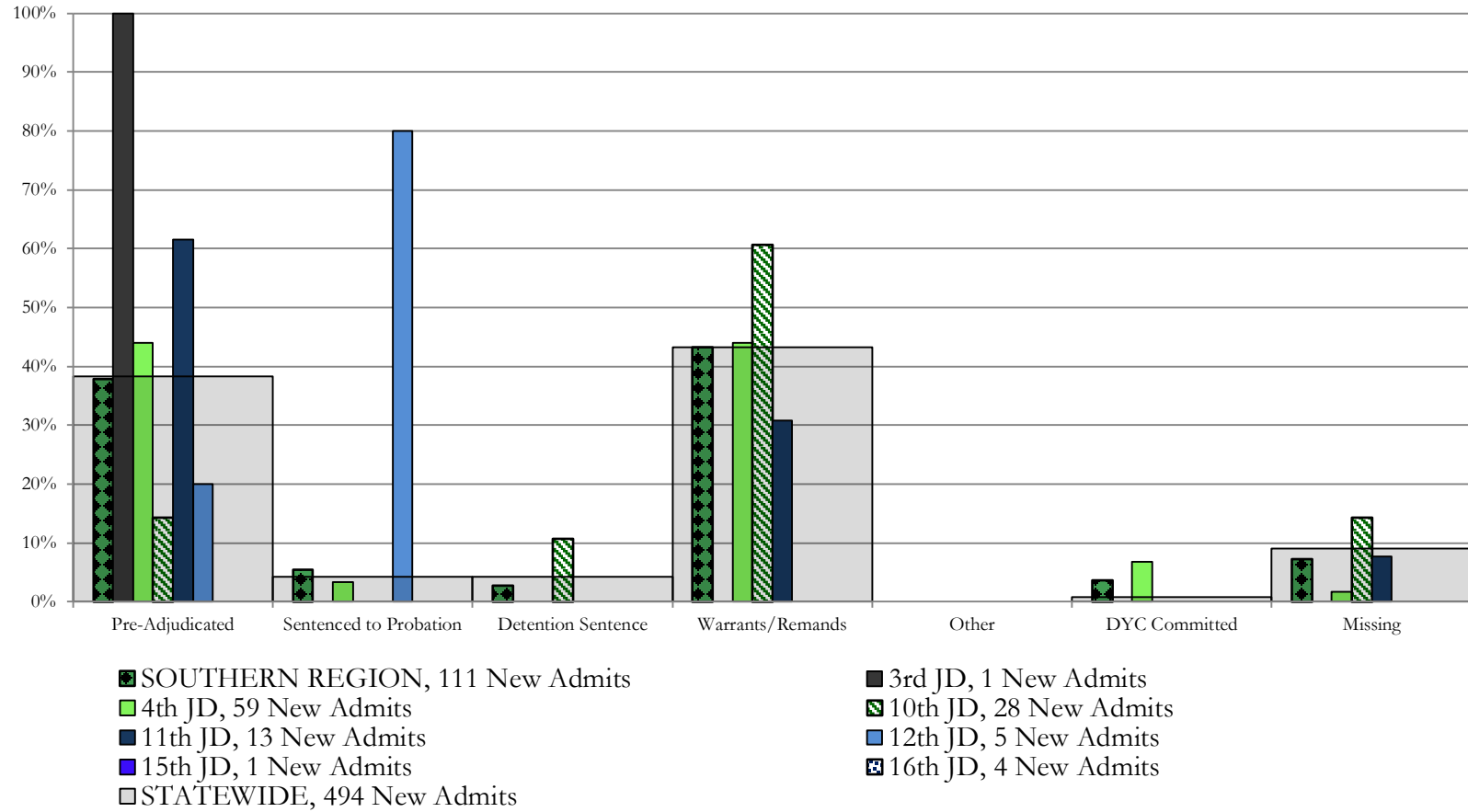
### January 2016 New Admits



- NORTHEAST REGION, 117 New Admits
- 8th JD, 25 New Admits
- 13th JD, 3 New Admits
- 17th JD, 41 New Admits
- 19th JD, 39 New Admits
- 20th JD, 9 New Admits
- STATEWIDE, 494 New Admits

## Southern Region

### SB94 Reason Detained by Judicial District January 2016 New Admits

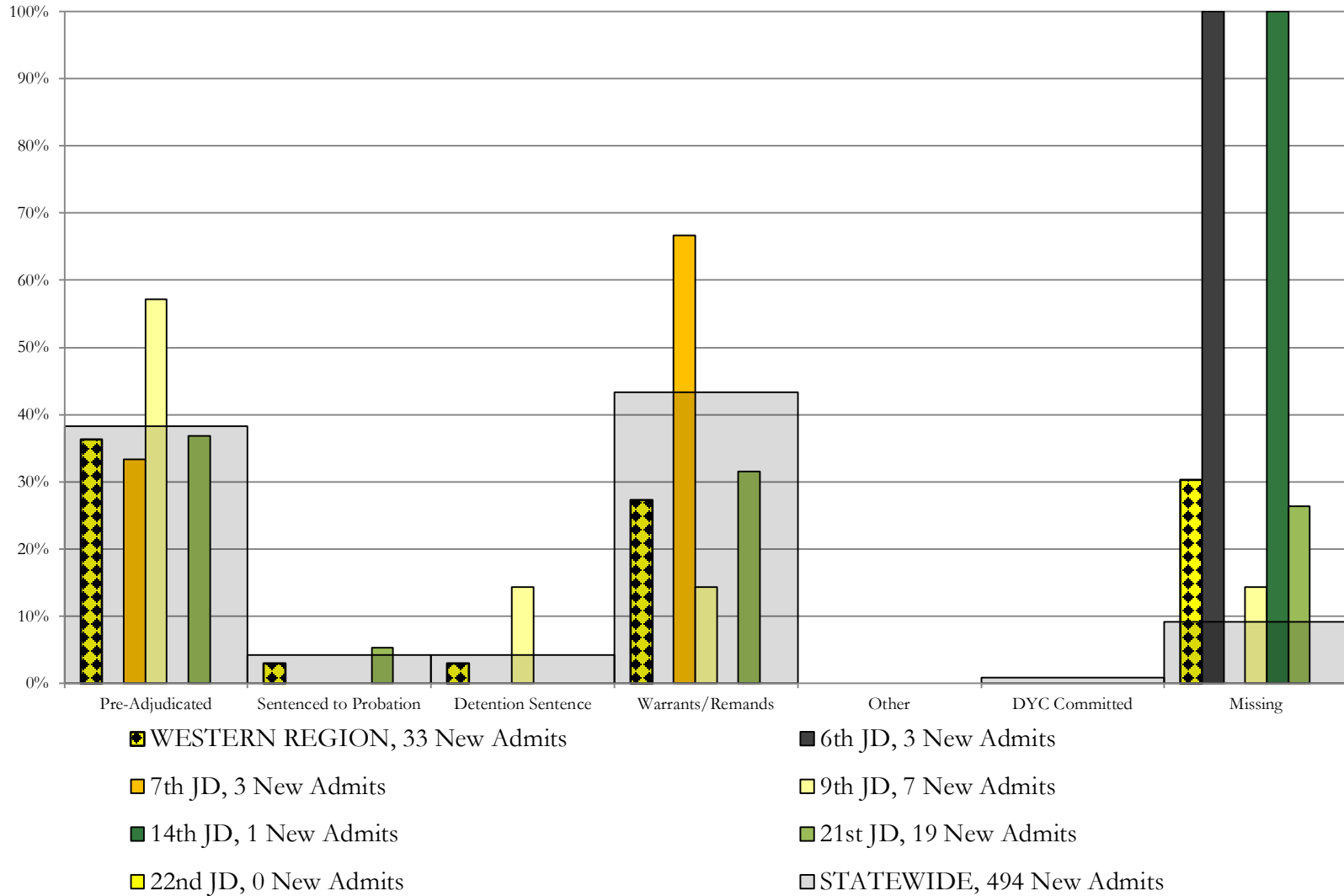




# Western Region

## SB94 Reason Detained by Judicial District

### January 2016 New Admits



# January 2016 SB94 Supplemental Report

## DYC Detention Maximum Youth Served by Judicial District<sup>1</sup>

Region	JD	Detention Capacity	Detention ADP		Maximum Youth Served on a Single Day <sup>2,3</sup>			
			January 2016	YTD	January 2016		YTD	
					Number of Youth	% of Detention Capacity	Number of Youth	% of Detention Capacity
<i>Central Region</i>								
	1st	37	19.3	23.0	26	70.3%	37	100.0%
	2nd	64	55.0	53.3	66	103.1%	66	103.1%
	5th	4	3.0	3.3	6	150.0%	6	150.0%
	18th	61	40.1	40.4	42	68.9%	53	86.9%
<b>Central Region</b>		<b>166</b>	<b>117.3</b>	<b>120.0</b>	<b>126</b>	<b>75.9%</b>	<b>138</b>	<b>83.1%</b>
<i>Northeast Region</i>								
	8th	21	13.3	14.4	18	85.7%	22	104.8%
	13th	5	3.0	3.2	5	100.0%	10	200.0%
	17th	30	26.2	25.8	30	100.0%	31	103.3%
	19th	25	16.5	19.3	28	112.0%	31	124.0%
	20th	13	3.1	5.2	7	53.8%	13	100.0%
<b>Northeast Region</b>		<b>94</b>	<b>62.2</b>	<b>67.9</b>	<b>79</b>	<b>84.0%</b>	<b>95</b>	<b>101.1%</b>
<i>Southern Region</i>								
	3rd	2	0.3	1.3	1	50.0%	3	150.0%
	4th	51	40.0	40.3	49	96.1%	53	103.9%
	10th	13	10.9	11.5	15	115.4%	21	161.5%
	11th	8	5.0	2.9	8	100.0%	8	100.0%
	12th	4	2.8	1.8	4	100.0%	4	100.0%
	15th	2	0.9	1.2	3	150.0%	3	150.0%
	16th	3	0.3	0.6	1	33.3%	2	66.7%
<b>Southern Region</b>		<b>83</b>	<b>60.3</b>	<b>59.6</b>	<b>66</b>	<b>79.5%</b>	<b>75</b>	<b>90.4%</b>
<i>Western Region</i>								
	6th	5	0.9	1.1	3	60.0%	3	60.0%
	7th	7	5.0	4.2	6	85.7%	8	114.3%
	9th	6	5.3	4.2	7	116.7%	10	166.7%
	14th	3	0.8	1.1	2	66.7%	4	133.3%
	21st	14	7.2	11.1	11	78.6%	19	135.7%
	22nd	4	0.0	1.1	0	0.0%	4	100.0%
<b>Western Region</b>		<b>39</b>	<b>19.4</b>	<b>22.7</b>	<b>24</b>	<b>61.5%</b>	<b>30</b>	<b>76.9%</b>
<i>Missing JD or Multiple JDs</i>			0.3	1.8				
<b>Statewide</b>		<b>382</b>	<b>259.4</b>	<b>272.0</b>	<b>269</b>	<b>70.4%</b>	<b>310</b>	<b>81.2%</b>

<sup>1</sup> Maximum youth served is the highest number of youth in detention on a single day during the month or fiscal year.

<sup>2</sup> Regional figures are not the sum of judicial districts, but represent the maximum count on one day for the entire region.

<sup>3</sup> State figures are not the sum of regional figures, but represent the maximum count on one day for the entire state.

## January 2016 SB94 Supplemental Report

### SB94 Community ADP by Judicial District

Region	JD	Committed		Diversion		ICJ		Municipal		Pre-Adjudicated		Sentenced		VCO		Total	
		January	YTD	January	YTD	January	YTD	January	YTD	January	YTD	January	YTD	January	YTD	January	YTD
<i>Central Region</i>																	
	1st	2.0	0.8	0.8	0.1	0.0	0.0	0.0	0.1	267.4	221.9	13.7	14.5	0.0	0.0	283.9	237.4
	2nd	3.0	1.0	0.0	0.0	0.0	0.0	0.0	0.0	204.2	229.5	74.8	69.4	1.0	1.6	282.9	301.6
	5th	0.0	0.0	0.0	0.0	0.0	0.0	0.0	0.0	11.4	11.3	28.0	28.2	0.0	0.0	39.4	39.5
	18th	2.1	0.8	1.0	0.4	0.0	0.0	0.0	0.0	334.7	301.7	36.7	40.0	1.0	0.5	375.5	343.3
<b>Central Total</b>		<b>7.1</b>	<b>2.6</b>	<b>1.8</b>	<b>0.5</b>	<b>0.0</b>	<b>0.0</b>	<b>0.0</b>	<b>0.1</b>	<b>817.6</b>	<b>764.4</b>	<b>153.2</b>	<b>152.1</b>	<b>2.0</b>	<b>2.0</b>	<b>981.7</b>	<b>921.8</b>
<i>Northeast Region</i>																	
	8th	0.0	0.0	0.4	0.1	0.0	0.0	0.0	0.0	48.7	45.2	53.3	40.3	0.0	0.0	102.4	85.6
	13th	0.0	0.0	0.0	0.0	0.0	0.0	0.0	0.0	17.9	14.8	10.8	11.1	5.0	5.4	33.7	31.4
	17th	0.0	0.5	0.0	0.0	0.0	0.0	1.0	1.0	124.1	103.8	44.3	46.3	0.0	0.0	169.4	151.6
	19th	0.9	0.3	0.0	0.0	0.0	0.0	0.0	0.0	68.3	59.6	51.8	48.9	1.0	0.2	122.0	109.0
	20th	2.0	1.3	0.0	0.0	0.0	0.0	0.0	0.0	102.4	79.6	52.8	49.1	0.0	0.0	157.2	130.0
<b>Northeast Total</b>		<b>2.9</b>	<b>2.1</b>	<b>0.4</b>	<b>0.1</b>	<b>0.0</b>	<b>0.0</b>	<b>1.0</b>	<b>1.0</b>	<b>361.4</b>	<b>303.1</b>	<b>213.1</b>	<b>195.7</b>	<b>6.0</b>	<b>5.6</b>	<b>584.7</b>	<b>507.6</b>
<i>Southern Region</i>																	
	3rd	0.0	0.1	0.0	0.0	0.0	0.0	0.0	0.0	14.0	8.3	2.0	3.3	2.0	2.0	18.0	13.7
	4th	3.1	2.0	0.0	0.0	0.0	0.0	2.0	2.0	190.4	160.2	145.1	118.2	4.0	2.6	344.6	285.0
	10th	2.0	1.1	0.0	0.0	0.0	0.0	83.4	50.9	14.8	20.0	14.7	15.3	8.9	9.2	123.8	96.4
	11th	0.0	0.0	0.0	0.0	0.0	0.0	0.0	0.3	22.0	14.7	35.0	26.2	0.0	0.0	56.9	41.2
	12th	0.0	0.0	0.0	0.0	0.0	0.0	0.0	0.0	6.6	7.8	7.9	6.3	0.0	0.0	14.5	14.1
	15th	0.0	0.0	0.0	0.0	0.0	0.0	0.0	0.0	4.0	3.1	7.8	5.8	0.0	0.0	11.8	8.9
	16th	0.0	0.0	0.0	0.0	0.0	0.0	0.0	0.0	5.6	3.5	14.0	14.3	4.0	4.0	23.6	21.8
<b>Southern Total</b>		<b>5.1</b>	<b>3.1</b>	<b>0.0</b>	<b>0.0</b>	<b>0.0</b>	<b>0.0</b>	<b>85.4</b>	<b>53.1</b>	<b>257.4</b>	<b>217.6</b>	<b>226.5</b>	<b>189.4</b>	<b>18.9</b>	<b>17.7</b>	<b>593.3</b>	<b>481.0</b>
<i>Western Region</i>																	
	6th	0.0	0.0	0.0	0.2	0.0	0.0	0.0	0.0	8.4	10.8	0.0	0.0	1.0	1.0	9.4	11.9
	7th	0.0	0.0	5.8	1.8	0.0	0.0	2.0	0.8	11.8	12.7	16.8	14.6	1.2	0.2	37.6	30.1
	9th	0.0	0.0	0.0	0.0	0.0	0.0	0.0	0.0	16.4	11.0	5.3	4.6	0.0	0.0	21.6	15.6
	14th	0.0	0.0	0.0	0.0	0.0	0.0	0.0	0.0	5.0	5.3	2.0	1.7	0.0	0.0	7.0	7.0
	21st	0.0	0.0	0.0	0.0	0.0	0.0	0.0	0.0	46.8	45.3	9.7	9.6	0.0	0.0	56.5	54.8
	22nd	0.0	0.0	0.0	0.0	0.0	0.0	0.0	0.0	2.0	3.0	1.0	1.3	0.0	0.0	3.0	4.3
<b>Western Total</b>		<b>0.0</b>	<b>0.0</b>	<b>5.8</b>	<b>1.9</b>	<b>0.0</b>	<b>0.0</b>	<b>2.0</b>	<b>0.8</b>	<b>90.3</b>	<b>88.0</b>	<b>34.8</b>	<b>31.8</b>	<b>2.2</b>	<b>1.2</b>	<b>135.1</b>	<b>123.8</b>
<b>Statewide Total</b>		<b>15.1</b>	<b>7.8</b>	<b>8.0</b>	<b>2.5</b>	<b>0.0</b>	<b>0.1</b>	<b>88.4</b>	<b>55.0</b>	<b>1526.7</b>	<b>1373.1</b>	<b>627.5</b>	<b>569.1</b>	<b>29.1</b>	<b>26.6</b>	<b>2294.8</b>	<b>2034.1</b>