

December 2015  
FY 2015-2016  
SB94 JDSAG SUPPLEMENTAL REPORT

Prepared by the Division of Youth Corrections (DYC)

Research and Evaluation Unit

January 27, 2016



**COLORADO**

**Office of Children,  
Youth & Families**

Division of Youth Corrections

# December 2015 SB94 Supplemental Report

## DYC Commitment ADP & New Commitments by Judicial District

Region	JD <sup>1</sup>	2016 Population Estimates <sup>2</sup>	ADP <sup>3</sup>		New Commitments		
			December 2015	YTD	December 2015	YTD	YTD Rate <sup>4</sup>
<i>Central Region</i>							
	1st	55,832	65.4	70.0	3	21	3.8
	2nd	60,479	132.5	135.8	2	25	4.1
	5th	9,792	9.9	10.6	1	1	1.0
	18th	117,684	76.4	79.3	4	20	1.7
<b>Central Total</b>		<b>243,787</b>	<b>284.1</b>	<b>295.7</b>	<b>10</b>	<b>67</b>	<b>2.7</b>
<i>Northeast Region</i>							
	8th	31,855	44.6	41.2	2	20	6.3
	13th	8,467	8.0	8.4	0	2	2.4
	17th	69,058	79.0	86.1	4	19	2.8
	19th	35,275	56.7	54.6	3	20	5.7
	20th	32,027	13.5	13.2	1	4	1.2
<b>Northeast Total</b>		<b>176,682</b>	<b>201.8</b>	<b>203.6</b>	<b>10</b>	<b>65</b>	<b>3.7</b>
<i>Southern Region</i>							
	3rd	1,880	1.0	2.1	0	0	0.0
	4th	80,316	87.7	94.3	3	18	2.2
	10th	17,742	41.9	39.0	2	15	8.5
	11th	7,203	4.5	5.7	0	1	1.4
	12th	5,251	6.0	5.1	0	2	3.8
	15th	2,174	2.0	1.9	0	1	4.6
	16th	2,795	0.0	1.2	0	1	3.6
<b>Southern Total</b>		<b>117,361</b>	<b>143.1</b>	<b>149.4</b>	<b>5</b>	<b>38</b>	<b>3.2</b>
<i>Western Region</i>							
	6th	6,232	10.0	11.9	0	0	0.0
	7th	10,543	10.0	9.2	0	2	1.9
	9th	9,287	3.5	4.8	0	1	1.1
	14th	5,553	2.5	2.7	1	1	1.8
	21st	15,602	32.3	29.2	2	14	9.0
	22nd	3,036	4.0	5.1	0	1	3.3
<b>Western Total</b>		<b>50,253</b>	<b>62.3</b>	<b>62.9</b>	<b>3</b>	<b>19</b>	<b>3.8</b>
<b>Statewide Total</b>		<b>588,083</b>	<b>691.3</b>	<b>711.6</b>	<b>28</b>	<b>189</b>	<b>3.2</b>

<sup>1</sup> JD represents the judicial district in which the client was committed. Regional totals are a sum of their respective judicial districts. Regional totals reported here may differ slightly from those reported in the Monthly Population Report, where region is defined by active caseloads.

<sup>2</sup> Source: DOLA 2016 Estimates

<sup>3</sup> Due to rounding, totals shown may not be an exact sum of the subtotals.

<sup>4</sup> Per 10,000 youth in the population

# December 2015 SB94 Supplemental Report

## DYC Detention ADP and New Detention Admissions by Judicial District

Region	JD	2016 Population Estimates <sup>1</sup>	ADP		New Admits		
			December 2015	YTD	December 2015	YTD	YTD New Admit Rate <sup>2</sup>
<i>Central Region</i>							
	1st	55,832	22.1	23.8	53	294	52.7
	2nd	60,479	52.5	53.0	83	571	94.4
	5th	9,792	2.5	3.3	2	24	24.5
	18th	117,684	33.8	41.2	70	524	44.5
<b>Central Total</b>		<b>243,787</b>	<b>110.9</b>	<b>121.3</b>	<b>208</b>	<b>1,413</b>	<b>58.0</b>
<i>Northeast Region</i>							
	8th	31,855	8.7	14.6	31	210	65.9
	13th	8,467	3.3	3.3	8	44	52.0
	17th	69,058	24.4	25.8	42	267	38.7
	19th	35,275	19.9	19.7	37	245	69.5
	20th	32,027	4.0	5.5	22	145	45.3
<b>Northeast Total</b>		<b>176,682</b>	<b>60.3</b>	<b>68.9</b>	<b>140</b>	<b>911</b>	<b>51.6</b>
<i>Southern Region</i>							
	3rd	1,880	0.5	1.5	0	10	53.2
	4th	80,316	41.5	40.4	58	377	46.9
	10th	17,742	8.1	11.6	23	209	117.8
	11th	7,203	2.6	2.5	16	70	97.2
	12th	5,251	2.5	1.7	5	28	53.3
	15th	2,174	1.3	1.2	3	9	41.4
	16th	2,795	0.0	0.7	0	6	21.5
<b>Southern Total</b>		<b>117,361</b>	<b>56.4</b>	<b>59.5</b>	<b>105</b>	<b>709</b>	<b>60.4</b>
<i>Western Region</i>							
	6th	6,232	0.1	1.1	1	20	32.1
	7th	10,543	5.2	4.0	3	35	33.2
	9th	9,287	7.0	4.0	4	26	28.0
	14th	5,553	2.6	1.1	4	12	21.6
	21st	15,602	8.5	11.8	24	126	80.8
	22nd	3,036	0.0	1.2	1	10	32.9
<b>Western Total</b>		<b>50,253</b>	<b>23.4</b>	<b>23.2</b>	<b>37</b>	<b>229</b>	<b>45.6</b>
<i>Missing JD or Multiple JDs</i>			1.8	2.1			
<b>Statewide Total</b>		<b>588,083</b>	<b>252.8</b>	<b>274.9</b>	<b>490</b>	<b>3,262</b>	<b>55.5</b>

<sup>1</sup> Source: DOLA 2016 Estimates

<sup>2</sup> Per 10,000 youth in the population

# December 2015 SB94 Supplemental Report

DYC Detention LOS by Judicial District				
Region	JD	YTD Detention Releases	YTD LOS (days)	LOS (days) Compared to State AVG
<i>Central Region</i>				
	1st	298	16.8	1.4
	2nd	579	15.3	-0.1
	5th	25	25.8	10.4
	18th	530	13.3	-2.1
<b>Central Total</b>		<b>1,432</b>	<b>15.0</b>	<b>-0.4</b>
<i>Northeast Region</i>				
	8th	221	12.5	-3.0
	13th	43	13.0	-2.4
	17th	273	15.1	-0.3
	19th	255	18.3	2.9
	20th	145	6.4	-9.0
<b>Northeast Total</b>		<b>937</b>	<b>13.9</b>	<b>-1.5</b>
<i>Southern Region</i>				
	3rd	11	28.4	13.0
	4th	376	18.9	3.5
	10th	221	9.7	-5.7
	11th	69	6.5	-8.9
	12th	27	9.5	-6.0
	15th	8	25.1	9.7
	16th	7	18.3	2.9
<b>Southern Total</b>		<b>719</b>	<b>14.8</b>	<b>-0.7</b>
<i>Western Region</i>				
	6th	21	9.3	-6.1
	7th	32	15.8	0.3
	9th	20	24.8	9.4
	14th	10	19.2	3.8
	21st	119	14.2	-1.2
	22nd	11	21.6	6.2
<b>Western Total</b>		<b>213</b>	<b>15.6</b>	<b>0.1</b>
<b>Statewide Total</b>		<b>3,300</b>	<b>15.4</b>	<b>-</b>

## December 2015 SB 94 Supplemental Report

### YTD DYC Detention ADP & Ethnicity by Judicial District

Region	JD	Anglo-American		African-American		Hispanic / Latino		Native-American		Asian-American		Other		TOTAL	
		ADP	%	ADP	%	ADP	%	ADP	%	ADP	%	ADP	%	ADP	%
<b>Central</b>															
	1st	12.1	51.0%	1.4	5.7%	8.6	35.9%	0.7	2.7%	0.8	3.4%	0.3	1.3%	23.8	100%
	2nd	6.3	11.9%	21.6	40.7%	24.2	45.7%	0.1	0.2%	0.4	0.8%	0.3	0.6%	53.0	100%
	5th	1.9	57.6%	0.0	0.0%	1.4	42.4%	0.0	0.0%	0.0	0.0%	0.0	0.0%	3.3	100%
	18th	15.6	38.0%	16.0	38.8%	8.8	21.3%	0.4	1.0%	0.1	0.1%	0.4	0.9%	41.2	100%
<b>Central Total</b>		<b>36.0</b>	<b>39.6%</b>	<b>38.9</b>	<b>21.3%</b>	<b>43.0</b>	<b>36.3%</b>	<b>1.2</b>	<b>1.0%</b>	<b>1.3</b>	<b>1.1%</b>	<b>1.0</b>	<b>0.7%</b>	<b>121.3</b>	<b>100%</b>
<b>Northeast</b>															
	8th	8.7	59.5%	0.5	3.2%	4.6	31.5%	0.10	0.7%	0.0	0.0%	0.7	5.1%	14.6	100%
	13th	1.3	39.3%	0.0	0.0%	1.6	48.4%	0.0	0.0%	0.0	0.0%	0.40	12.2%	3.3	100%
	17th	5.0	19.2%	5.3	20.5%	15.2	58.8%	0.0	0.0%	0.02	0.1%	0.4	1.5%	25.8	100%
	19th	6.8	34.2%	0.8	4.2%	11.5	58.3%	0.6	2.9%	0.0	0.0%	0.1	0.4%	19.7	100%
	20th	2.9	53.0%	0.3	4.6%	2.1	38.5%	0.1	1.9%	0.0	0.0%	0.1	1.9%	5.5	100%
<b>Northeast Total</b>		<b>24.6</b>	<b>41.0%</b>	<b>6.8</b>	<b>6.5%</b>	<b>35.0</b>	<b>47.1%</b>	<b>0.8</b>	<b>1.1%</b>	<b>0.0</b>	<b>0.0%</b>	<b>1.7</b>	<b>4.2%</b>	<b>68.9</b>	<b>100%</b>
<b>Southern</b>															
	3rd	0.8	53.0%	0.0	0.0%	0.7	47%	0.0	0.0%	0.0	0.0%	0.0	0.0%	1.5	100%
	4th	15.7	38.9%	12.5	30.9%	11.1	27.4%	0.6	1.4%	0.3	0.8%	0.2	0.6%	40.4	100%
	10th	2.5	21.9%	0.9	7.6%	8.1	70.0%	0.0	0.2%	0.0	0.0%	0.0	0.3%	11.6	100%
	11th	2.0	78.0%	0.1	5.7%	0.3	12.3%	0.10	4.0%	0.0	0.0%	0.0	0.0%	2.5	100%
	12th	0.4	24.6%	0.00	0.0%	1.0	58.2%	0.2	12.7%	0.0	0.0%	0.1	4.5%	1.7	100%
	15th	0.2	17.5%	0.3	28.6%	0.4	37.2%	0.20	16.6%	0.0	0.0%	0.0	0.0%	1.2	100%
	16th	0.1	11.8%	0.0	0.0%	0.6	88.2%	0.0	0.0%	0.0	0.0%	0.0	0.0%	0.7	100%
<b>Southern Total</b>		<b>21.7</b>	<b>35.1%</b>	<b>13.9</b>	<b>10.4%</b>	<b>22.2</b>	<b>48.6%</b>	<b>1.1</b>	<b>5.0%</b>	<b>0.3</b>	<b>0.1%</b>	<b>0.3</b>	<b>0.8%</b>	<b>59.5</b>	<b>100%</b>
<b>Western</b>															
	6th	0.5	48.9%	0.0	0.0%	0.5	46.0%	0.1	5.1%	0.0	0.0%	0.0	0.0%	1.1	100%
	7th	2.6	63.3%	0.0	0.0%	0.8	19.0%	0.7	17.7%	0.0	0.0%	0.0	0.0%	4.0	100%
	9th	2.2	54.8%	0.0	0.0%	1.8	44.4%	0.0	0.8%	0.0	0.0%	0.0	0.0%	4.0	100%
	14th	1.0	90%	0.0	0.0%	0.10	9.6%	0.0	0.0%	0.0	0.0%	0.0	0.0%	1.1	100%
	21st	8.3	70.3%	0.97	8.2%	2.3	19.6%	0.00	0.0%	0.0	0.1%	0.2	1.8%	11.8	100%
	22nd	0.6	51.3%	0.6	45.8%	0.0	0.0%	0.0	2.9%	0.0	0.0%	0.0	0.0%	1.3	100%
<b>Western Total</b>		<b>15.2</b>	<b>63.2%</b>	<b>1.5</b>	<b>9.0%</b>	<b>5.5</b>	<b>23.1%</b>	<b>0.8</b>	<b>4.4%</b>	<b>0.0</b>	<b>0.0%</b>	<b>0.2</b>	<b>0.3%</b>	<b>23.2</b>	<b>100%</b>
Missing JD Data		0.5		0.4		1.2		0.0		0.0		0.0		2.0	
<b>Statewide Total</b>		<b>97.8</b>	<b>35.6%</b>	<b>61.5</b>	<b>22.4%</b>	<b>106.7</b>	<b>38.8%</b>	<b>3.9</b>	<b>1.4%</b>	<b>1.6</b>	<b>0.6%</b>	<b>3.3</b>	<b>1.2%</b>	<b>274.9</b>	<b>100%</b>

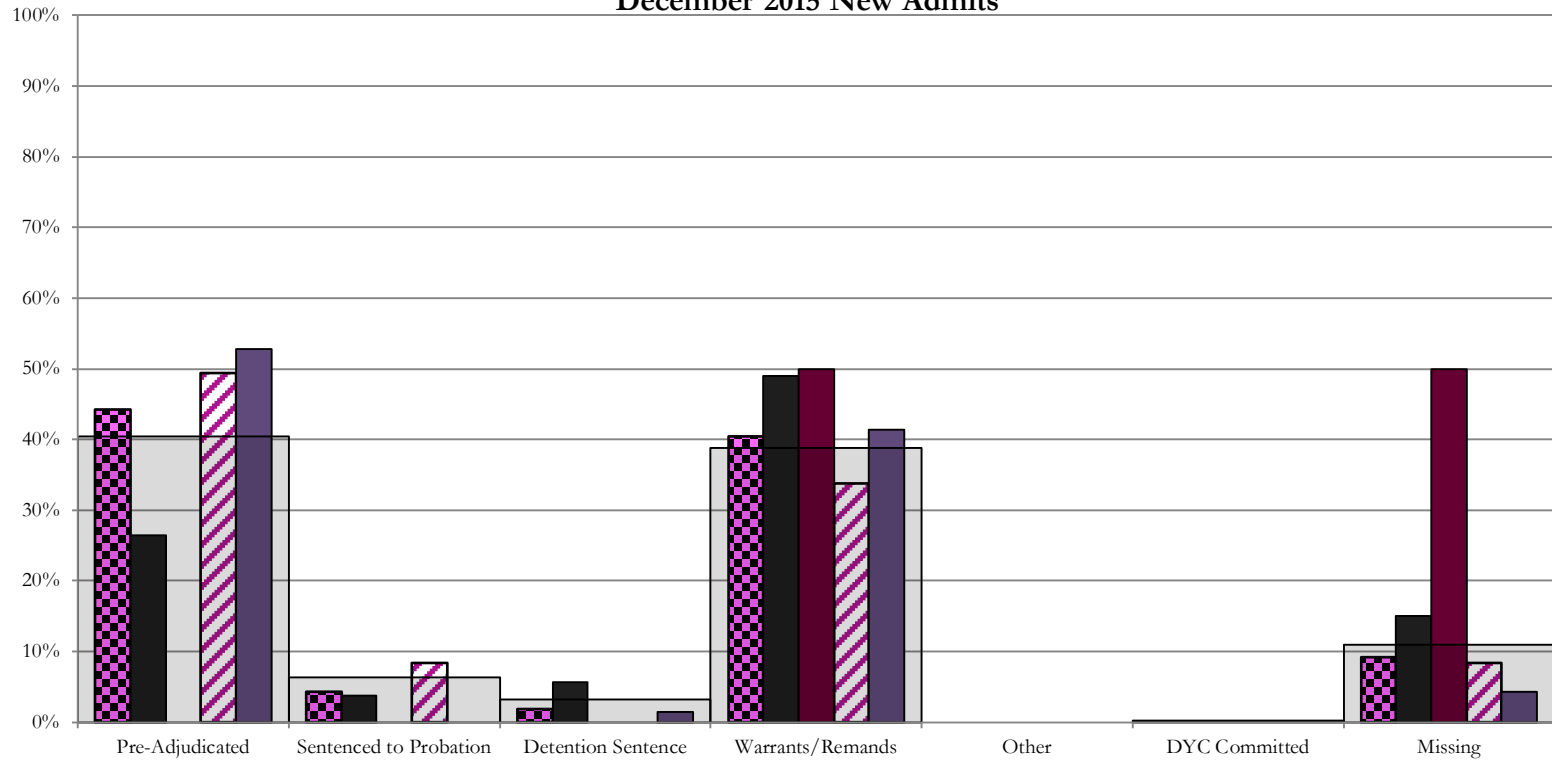
**December 2015**  
**SB94 JDSAG Supplemental Report**

SB94 Reason Detained (RD) by Judicial District

Region	JD	Monthly New Admits	Pre-Adjudicated				Sentenced to Probation				Detention Sentence								Warrants/Remands				Other						DYC Committed				Missing							
			Felony		Misdemeanor		Technical Violator		New Charges		Probation Sentence		Detention Sentence		Valid Court Order (VCO) Truancy		Awaiting DSS (Social Services) Placement		Failure to Appear (FTA)		Failure to Comply (FTC)		Interstate Compact on Juveniles (ICJ) Hold		Immigration Hold		No Bond Hold		Out-of-Country Warrant		Institutional		Parole		Missing					
			#	%	#	%	#	%	#	%	#	%	#	%	#	%	#	%	#	%	#	%	#	%	#	%	#	%	#	%	#	%	#	%	#	%				
<b>Central Region</b>																																								
	1st	53	11	20.8%	3	5.7%	2	3.8%	0	0.0%	0	0.0%	3	5.7%	0	0.0%	0	0.0%	0	0.0%	0	0.0%	0	0.0%	0	0.0%	0	0.0%	0	0.0%	0	0.0%	0	0.0%	0	0.0%	8	15.1%		
	2nd	83	37	44.6%	4	4.8%	6	7.2%	1	1.2%	0	0.0%	0	0.0%	0	0.0%	0	0.0%	0	0.0%	0	0.0%	0	0.0%	0	0.0%	0	0.0%	0	0.0%	0	0.0%	0	0.0%	0	0.0%	7	8.4%		
	5th	2	0	0.0%	0	0.0%	0	0.0%	0	0.0%	0	0.0%	0	0.0%	0	0.0%	0	0.0%	0	0.0%	1	50.0%	0	0.0%	0	0.0%	0	0.0%	0	0.0%	0	0.0%	0	0.0%	0	0.0%	1	50.0%		
	18th	70	23	32.9%	14	20.0%	0	0.0%	0	0.0%	0	0.0%	1	1.4%	0	0.0%	0	0.0%	0	0.0%	5	7.1%	24	34.3%	0	0.0%	0	0.0%	0	0.0%	0	0.0%	0	0.0%	0	0.0%	3	4.3%		
<b>Central Total</b>		<b>208</b>	<b>71</b>	<b>34%</b>	<b>21</b>	<b>10%</b>	<b>8</b>	<b>3.8%</b>	<b>1</b>	<b>0.5%</b>	<b>0</b>	<b>0.0%</b>	<b>4</b>	<b>1.9%</b>	<b>0</b>	<b>0.0%</b>	<b>0</b>	<b>0.0%</b>	<b>0</b>	<b>0.0%</b>	<b>27</b>	<b>13%</b>	<b>57</b>	<b>27%</b>	<b>0</b>	<b>0.0%</b>	<b>0</b>	<b>0.0%</b>	<b>0</b>	<b>0.0%</b>	<b>0</b>	<b>0.0%</b>	<b>0</b>	<b>0.0%</b>	<b>0</b>	<b>0.0%</b>	<b>19</b>	<b>9.1%</b>		
<b>Northeast Region</b>																																								
	8th	31	4	12.9%	4	12.9%	0	0.0%	0	0.0%	0	0.0%	0	0.0%	0	0.0%	0	0.0%	0	0.0%	1	3.2%	17	54.8%	0	0.0%	0	0.0%	0	0.0%	0	0.0%	0	0.0%	0	0.0%	5	16.1%		
	13th	8	6	75.0%	0	0.0%	0	0.0%	0	0.0%	0	0.0%	0	0.0%	0	0.0%	0	0.0%	0	0.0%	2	25.0%	0	0.0%	0	0.0%	0	0.0%	0	0.0%	0	0.0%	0	0.0%	0	0.0%	0	0.0%		
	17th	42	16	38.1%	5	11.9%	0	0.0%	0	0.0%	0	0.0%	4	9.5%	0	0.0%	0	0.0%	0	0.0%	2	4.8%	10	23.8%	0	0.0%	0	0.0%	0	0.0%	0	0.0%	0	0.0%	0	0.0%	6	14.3%		
	19th	37	11	29.7%	9	24.3%	8	21.6%	0	0.0%	0	0.0%	0	0.0%	0	0.0%	0	0.0%	0	0.0%	1	2.7%	8	21.6%	0	0.0%	0	0.0%	0	0.0%	0	0.0%	0	0.0%	0	0.0%	0	0.0%		
	20th	22	3	13.6%	0	0.0%	6	27.3%	0	0.0%	0	0.0%	0	0.0%	0	0.0%	0	0.0%	0	0.0%	0	0.0%	0	0.0%	0	0.0%	0	0.0%	0	0.0%	0	0.0%	0	0.0%	0	0.0%	13	59.1%		
<b>Northeast Total</b>		<b>140</b>	<b>40</b>	<b>29%</b>	<b>18</b>	<b>13%</b>	<b>14</b>	<b>10.0%</b>	<b>0</b>	<b>0.0%</b>	<b>0</b>	<b>0.0%</b>	<b>4</b>	<b>2.9%</b>	<b>0</b>	<b>0.0%</b>	<b>0</b>	<b>0.0%</b>	<b>0</b>	<b>0.0%</b>	<b>4</b>	<b>2.9%</b>	<b>37</b>	<b>26%</b>	<b>0</b>	<b>0.0%</b>	<b>0</b>	<b>0.0%</b>	<b>0</b>	<b>0.0%</b>	<b>0</b>	<b>0.0%</b>	<b>0</b>	<b>0.0%</b>	<b>0</b>	<b>0.0%</b>	<b>23</b>	<b>16%</b>		
<b>Southern Region</b>																																								
	3rd	0	0	0.0%	0	0.0%	0	0.0%	0	0.0%	0	0.0%	0	0.0%	0	0.0%	0	0.0%	0	0.0%	0	0.0%	0	0.0%	0	0.0%	0	0.0%	0	0.0%	0	0.0%	0	0.0%	0	0.0%	0	0.0%		
	4th	58	17	29.3%	4	6.9%	2	3.4%	2	3.4%	0	0.0%	1	1.7%	0	0.0%	0	0.0%	0	0.0%	7	12.1%	24	41.4%	0	0.0%	0	0.0%	0	0.0%	0	0.0%	0	0.0%	0	0.0%	1	1.7%		
	10th	23	2	8.7%	1	4.3%	0	0.0%	0	0.0%	0	0.0%	4	17.4%	0	0.0%	0	0.0%	4	17.4%	10	43.5%	0	0.0%	0	0.0%	0	0.0%	1	4.3%	0	0.0%	1	4.3%	0	0.0%	1	4.3%		
	11th	16	3	18.8%	1	6.3%	2	12.5%	0	0.0%	0	0.0%	1	6.3%	0	0.0%	0	0.0%	0	0.0%	2	12.5%	5	31.3%	0	0.0%	0	0.0%	0	0.0%	0	0.0%	0	0.0%	0	0.0%	2	12.5%		
	12th	5	1	20.0%	2	40.0%	0	0.0%	0	0.0%	0	0.0%	0	0.0%	0	0.0%	0	0.0%	1	20%	1	20.0%	0	0.0%	0	0.0%	0	0.0%	0	0.0%	0	0.0%	0	0.0%	0	0.0%	0	0.0%		
	15th	3	0	0.0%	1	0.0%	0	0.0%	0	0.0%	0	0.0%	0	0.0%	0	0.0%	0	0.0%	0	0.0%	0	0.0%	0	0.0%	0	0.0%	0	0.0%	0	0.0%	0	0.0%	0	0.0%	2	0.0%				
	16th	0	0	0.0%	0	0.0%	0	0.0%	0	0.0%	0	0.0%	0	0.0%	0	0.0%	0	0.0%	0	0.0%	0	0.0%	0	0.0%	0	0.0%	0	0.0%	0	0.0%	0	0.0%	0	0.0%	0	0.0%	0	0.0%		
<b>Southern Total</b>		<b>105</b>	<b>23</b>	<b>22%</b>	<b>9</b>	<b>9%</b>	<b>4</b>	<b>3.8%</b>	<b>2</b>	<b>1.9%</b>	<b>0</b>	<b>0.0%</b>	<b>6</b>	<b>5.7%</b>	<b>0</b>	<b>0.0%</b>	<b>0</b>	<b>0.0%</b>	<b>0</b>	<b>0.0%</b>	<b>14</b>	<b>13%</b>	<b>40</b>	<b>38%</b>	<b>0</b>	<b>0.0%</b>	<b>0</b>	<b>0.0%</b>	<b>0</b>	<b>0.0%</b>	<b>0</b>	<b>0.0%</b>	<b>0</b>	<b>0.0%</b>	<b>1</b>	<b>1.0%</b>	<b>0</b>	<b>0.0%</b>	<b>6</b>	<b>6%</b>
<b>Western Region</b>																																								
	6th	1	0	0.0%	1	100.0%	0	0.0%	0	0.0%	0	0.0%	0	0.0%	0	0.0%	0	0.0%	0	0.0%	0	0.0%	0	0.0%	0	0.0%	0	0.0%	0	0.0%	0	0.0%	0	0.0%	0	0.0%	0	0.0%		
	7th	3	1	33.3%	0	0.0%	0	0.0%	0	0.0%	0	0.0%	0	0.0%	1	33.3%	0	0.0%	1	33.3%	0	0.0%	0	0.0%	0	0.0%	0	0.0%	0	0.0%	0	0.0%	0	0.0%	0	0.0%	0	0.0%		
	9th	4	2	50.0%	0	0.0%	1	25.0%	0	0.0%	0	0.0%	0	0.0%	0	0.0%	0	0.0%	0	0.0%	0	0.0%	0	0.0%	0	0.0%	0	0.0%	0	0.0%	0	0.0%	0	0.0%	0	0.0%	1	25.0%		
	14th	4	1	0.0%	0	0.0%	0	0.0%	0	0.0%	0	0.0%	0	0.0%	0	0.0%	0	0.0%	0	0.0%	0	0.0%	0	0.0%	0	0.0%	0	0.0%	0	0.0%	0	0.0%	0	0.0%	0	0.0%	3	75.0%		
	21st	24	8	33.3%	3	12.5%	0	0.0%	0	0.0%	0	0.0%	1	4.2%	0	0.0%	0	0.0%	0	0.0%	2	8.3%	8	33.3%	0	0.0%	0	0.0%	0	0.0%	0	0.0%	0	0.0%	0	0.0%	2	8.3%		
	22nd	1	0	0.0%	0	0.0%	1	0.0%	0	0.0%	0	0.0%	0	0.0%	0	0.0%	0	0.0%	0	0.0%	0	0.0%	0	0.0%	0	0.0%	0	0.0%	0	0.0%	0	0.0%	0	0.0%	0	0.0%	0	0.0%		
<b>Western Total</b>		<b>37</b>	<b>12</b>	<b>32%</b>	<b>4</b>	<b>10.8%</b>	<b>2</b>	<b>5.4%</b>	<b>0</b>	<b>0.0%</b>	<b>0</b>	<b>0.0%</b>	<b>1</b>	<b>2.7%</b>	<b>1</b>	<b>2.7%</b>	<b>0</b>	<b>0.0%</b>	<b>3</b>	<b>8.1%</b>	<b>8</b>	<b>22%</b>	<b>0</b>	<b>0.0%</b>	<b>0</b>	<b>0.0%</b>	<b>0</b>	<b>0.0%</b>	<b>0</b>	<b>0.0%</b>	<b>0</b>	<b>0.0%</b>	<b>0</b>	<b>0.0%</b>	<b>0</b>	<b>0.0%</b>	<b>6</b>	<b>16%</b>		
<b>Individual RD Totals</b>		<b>490</b>	<b>146</b>	<b>30%</b>	<b>52</b>	<b>11%</b>	<b>28</b>	<b>5.7%</b>	<b>3</b>	<b>0.6%</b>	<b>0</b>	<b>0.0%</b>	<b>15</b>	<b>3.1%</b>	<b>1</b>	<b>0.2%</b>	<b>0</b>	<b>0.0%</b>	<b>48</b>	<b>10%</b>	<b>142</b>	<b>29%</b>	<b>0</b>	<b>0.0%</b>	<b>0</b>	<b>0.0%</b>	<b>0</b>	<b>0.0%</b>	<b>0</b>	<b>0.0%</b>	<b>0</b>	<b>0.0%</b>	<b>1</b>	<b>0.2%</b>	<b>0</b>	<b>0.0%</b>	<b>54</b>	<b>11%</b>		
<b>Statewide Totals</b>		<b>490</b>	<b>198</b>	<b>40.4%</b>	<b>31</b>	<b>6.3%</b>	<b>16</b>	<b>3.3%</b>	<b>190</b>	<b>38.8%</b>	<b>0</b>	<b>0.0%</b>	<b>1</b>	<b>0.2%</b>	<b>0</b>	<b>0.0%</b>	<b>0</b>	<b>0.0%</b>	<b>48</b>	<b>10%</b>	<b>142</b>	<b>29%</b>	<b>0</b>	<b>0.0%</b>	<b>0</b>	<b>0.0%</b>	<b>0</b>	<b>0.0%</b>	<b>0</b>	<b>0.0%</b>	<b>1</b>	<b>0.2%</b>	<b>0</b>	<b>0.0%</b>	<b>54</b>	<b>11%</b>				

# Central Region

## SB94 Reason Detained by Judicial District December 2015 New Admits



■ CENTRAL REGION, 208 New Admits

■ 5th JD, 2 New Admits

■ 18th JD, 70 New Admits

■ 1st JD, 53 New Admits

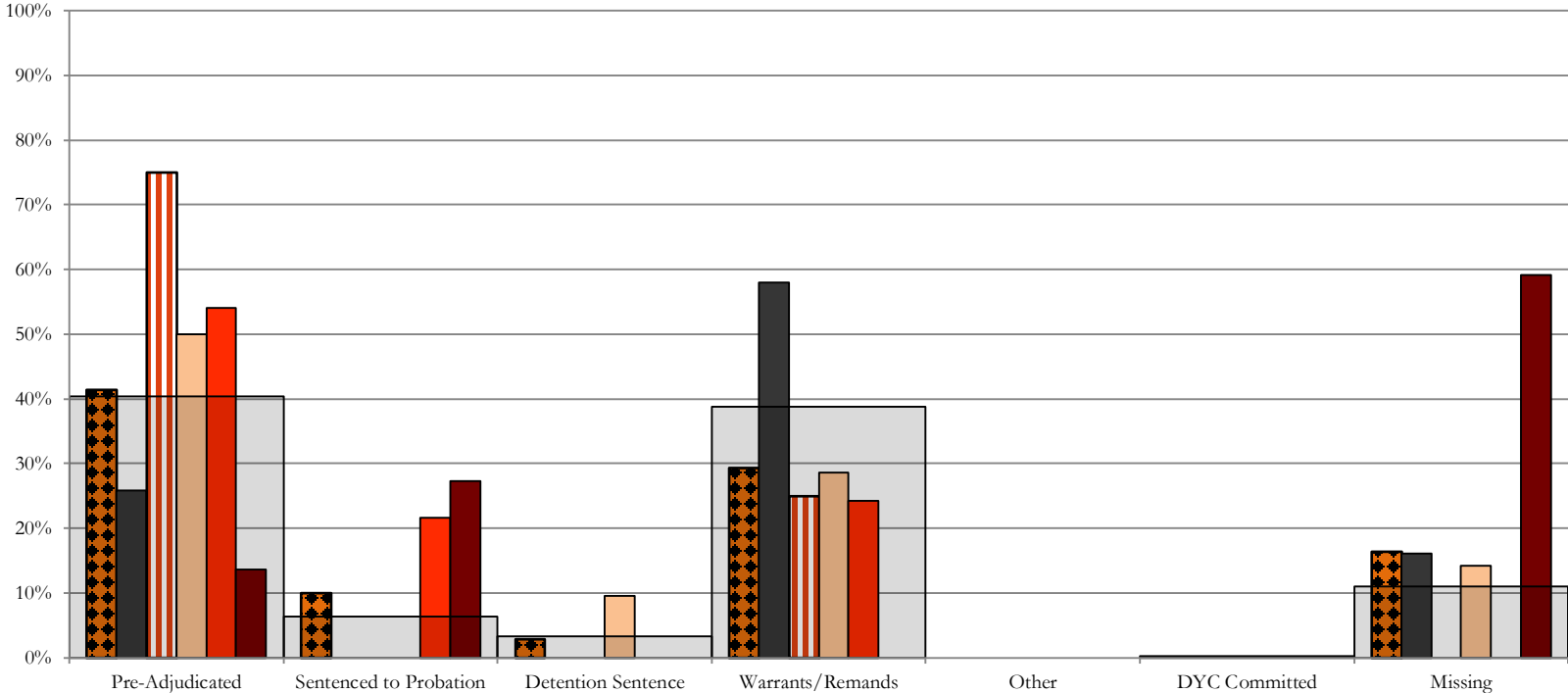
■ 2nd JD, 83 New Admits

■ STATEWIDE, 490 New Admits

# Northeast Region

## SB94 Reason Detained by Judicial District

### December 2015 New Admits



NORTHEAST REGION, 140 New Admits  

 13th JD, 8 New Admits  

 19th JD, 37 New Admits  

 STATEWIDE, 490 New Admits

8th JD, 31 New Admits  

 17th JD, 42 New Admits  

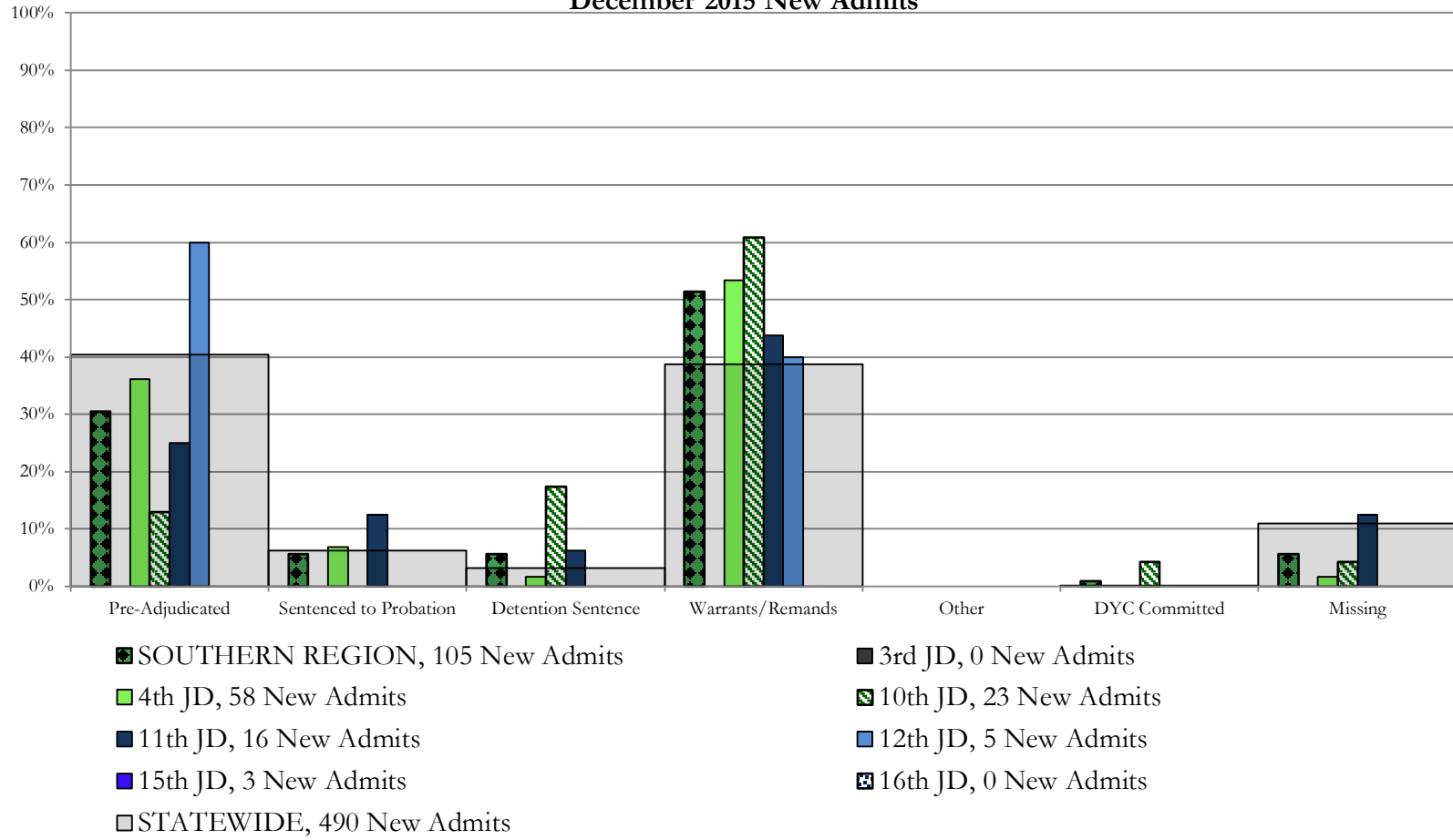
 20th JD, 22 New Admits



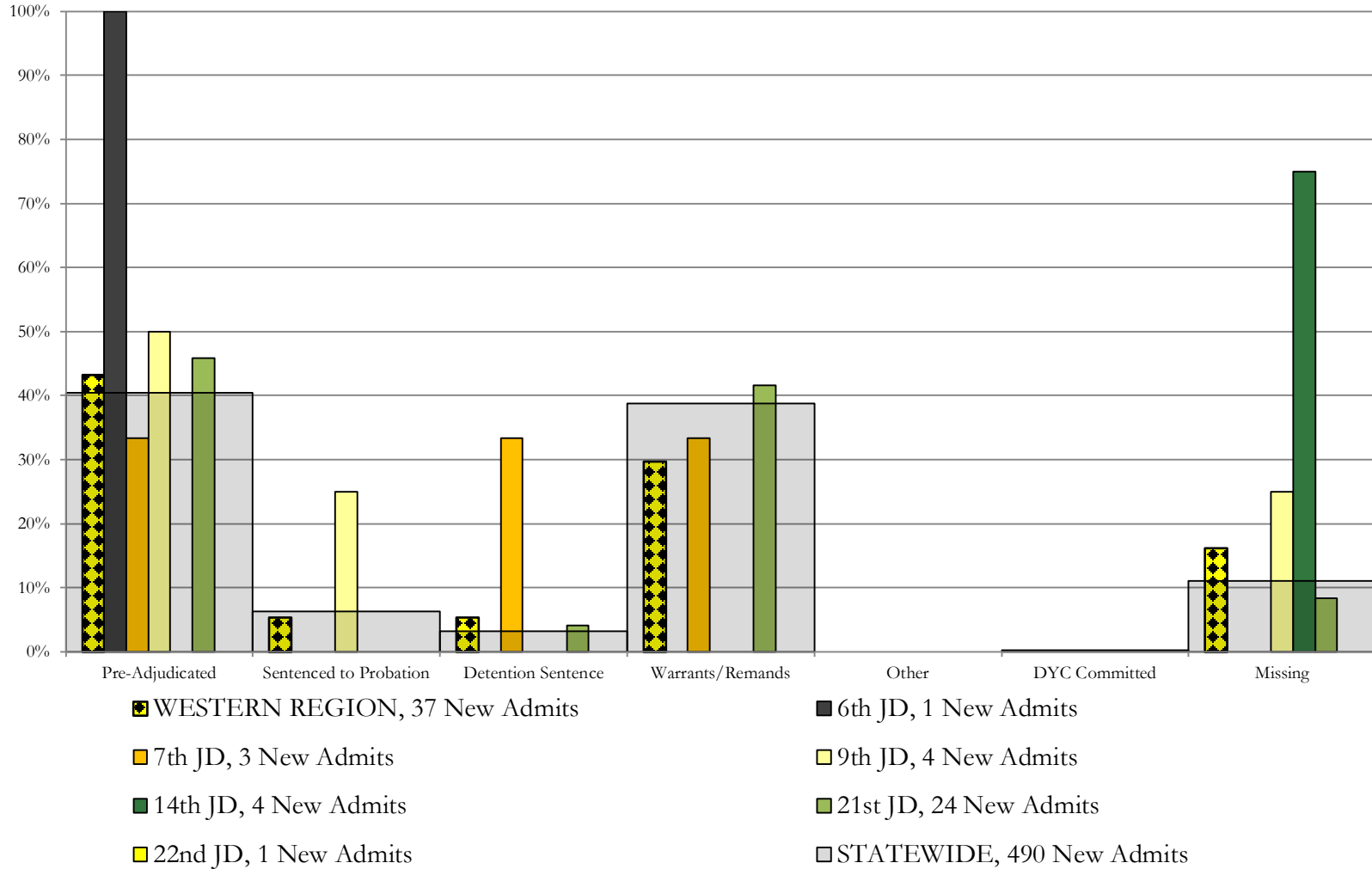
## Southern Region

### SB94 Reason Detained by Judicial District

#### December 2015 New Admits



## Western Region SB94 Reason Detained by Judicial District December 2015 New Admits



## December 2015 SB94 JDSAG Supplemental Report

SB94 Reason Detained (RD) by Judicial District Year to Date

Region	JD	Year to Date New Admits	Pre-Adjudicated				Sentenced to Probation				Detention Sentence								Warrants/Remands				Other				DYC Committed				Missing			
			Felony		Misdemeanor		Technical Violator		New Charges		Probation Sentence		Detention Sentence		Valid Court Order (VCO) Truancy		Awaiting DSS (Social Services) Placement		Failure to Appear (FTA)		Failure to Comply (FTC)		Interstate Compact on Juveniles (ICJ) Hold		Immigration Hold		Institutional		Parole		Missing			
			#	%	#	%	#	%	#	%	#	%	#	%	#	%	#	%	#	%	#	%	#	%	#	%	#	%	#	%	#	%		
<b>Central Region</b>																																		
	1st	294	62	21.1%	35	11.9%	3	1.0%	0	0.0%	0	0.0%	20	6.8%	0	0.0%	0	0.0%	38	12.9%	124	42.2%	0	0.0%	0	0.0%	0	0.0%	0	0.0%	0	0.0%	12	4.1%
	2nd	571	248	43.4%	47	8.2%	12	2.1%	5	0.9%	0	0.0%	0	0.0%	0	0.0%	0	0.0%	72	12.6%	154	27.0%	6	1.1%	0	0.0%	2	0.4%	2	0.4%	23	4.0%		
	5th	24	4	16.7%	4	16.7%	0	0.0%	0	0.0%	0	0.0%	0	0.0%	0	0.0%	0	0.0%	0	0.0%	14	58.3%	0	0.0%	0	0.0%	0	0.0%	0	0.0%	2	8.3%		
	18th	524	155	29.6%	102	19.5%	0	0.0%	0	0.0%	0	0.0%	12	2.3%	0	0.0%	0	0.0%	55	10.5%	178	34.0%	4	0.8%	0	0.0%	0	0.0%	0	0.0%	18	3.4%		
<b>Central Total</b>		<b>1,413</b>	<b>469</b>	<b>33.2%</b>	<b>188</b>	<b>13.3%</b>	<b>15</b>	<b>1.1%</b>	<b>5</b>	<b>0.4%</b>	<b>0</b>	<b>0.0%</b>	<b>32</b>	<b>2.3%</b>	<b>0</b>	<b>0.0%</b>	<b>0</b>	<b>0.0%</b>	<b>165</b>	<b>11.7%</b>	<b>470</b>	<b>33.3%</b>	<b>10</b>	<b>0.7%</b>	<b>0</b>	<b>0.0%</b>	<b>2</b>	<b>0.1%</b>	<b>2</b>	<b>0.1%</b>	<b>55</b>	<b>3.9%</b>		
<b>Northeast Region</b>																																		
	8th	210	33	15.7%	34	16.2%	5	2.4%	0	0.0%	0	0.0%	3	1.4%	0	0.0%	0	0.0%	22	10.5%	96	45.7%	0	0.0%	0	0.0%	0	0.0%	0	0.0%	0	0.0%	17	8.1%
	13th	44	19	43.2%	7	15.9%	2	4.5%	0	0.0%	0	0.0%	0	0.0%	0	0.0%	0	0.0%	0	0.0%	16	36.4%	0	0.0%	0	0.0%	0	0.0%	0	0.0%	0	0.0%		
	17th	267	74	27.7%	30	11.2%	1	0.4%	1	0.4%	0	0.0%	5	1.9%	0	0.0%	0	0.0%	25	9.4%	110	41.2%	0	0.0%	0	0.0%	0	0.0%	0	0.0%	21	7.9%		
	19th	245	57	23.3%	53	21.6%	75	30.6%	0	0.0%	0	0.0%	2	0.8%	6	2.4%	0	0.0%	19	7.8%	32	13.1%	0	0.0%	0	0.0%	0	0.0%	0	0.0%	1	0.4%		
	20th	145	38	26.2%	14	9.7%	18	12.4%	0	0.0%	0	0.0%	34	23.4%	0	0.0%	0	0.0%	7	4.8%	14	9.7%	0	0.0%	0	0.0%	0	0.0%	0	0.0%	20	13.8%		
<b>Northeast Total</b>		<b>911</b>	<b>221</b>	<b>24.3%</b>	<b>138</b>	<b>15.1%</b>	<b>101</b>	<b>11.1%</b>	<b>1</b>	<b>0.1%</b>	<b>0</b>	<b>0.0%</b>	<b>44</b>	<b>4.8%</b>	<b>6</b>	<b>0.7%</b>	<b>0</b>	<b>0.0%</b>	<b>73</b>	<b>8.0%</b>	<b>268</b>	<b>29.4%</b>	<b>0</b>	<b>0.0%</b>	<b>0</b>	<b>0.0%</b>	<b>0</b>	<b>0.0%</b>	<b>0</b>	<b>0.0%</b>	<b>59</b>	<b>6.5%</b>		
<b>Southern Region</b>																																		
	3rd	10	3	30.0%	2	20.0%	1	10.0%	0	0.0%	0	0.0%	0	0.0%	0	0.0%	0	0.0%	0	0.0%	2	20.0%	0	0.0%	0	0.0%	0	0.0%	0	0.0%	2	20.0%		
	4th	377	111	29.4%	35	9.3%	37	9.8%	16	4.2%	0	0.0%	2	0.5%	2	0.5%	0	0.0%	46	12.2%	108	28.6%	0	0.0%	0	0.0%	3	0.8%	0	0.0%	17	4.5%		
	10th	209	35	16.7%	7	3.3%	2	1.0%	0	0.0%	0	0.0%	38	18.2%	0	0.0%	0	0.0%	50	23.9%	65	31.1%	0	0.0%	0	0.0%	3	1.4%	0	0.0%	9	4.3%		
	11th	70	17	24.3%	8	11.4%	4	5.7%	0	0.0%	0	0.0%	5	7.1%	1	1.4%	0	0.0%	10	14.3%	21	30.0%	0	0.0%	0	0.0%	0	0.0%	0	0.0%	4	5.7%		
	12th	28	4	14.3%	5	17.9%	2	7.1%	0	0.0%	0	0.0%	0	0.0%	0	0.0%	0	0.0%	5	17.9%	7	25.0%	0	0.0%	0	0.0%	0	0.0%	0	0.0%	5	17.9%		
	15th	9	2	22.2%	1	11.1%	0	0.0%	0	0.0%	0	0.0%	0	0.0%	0	0.0%	0	0.0%	0	0.0%	4	44.4%	0	0.0%	0	0.0%	0	0.0%	0	0.0%	2	22.2%		
	16th	6	0	0.0%	0	0.0%	0	0.0%	0	0.0%	0	0.0%	2	33.3%	0	0.0%	0	0.0%	0	0.0%	4	66.7%	0	0.0%	0	0.0%	0	0.0%	0	0.0%	0	0.0%		
<b>Southern Total</b>		<b>709</b>	<b>172</b>	<b>24.3%</b>	<b>58</b>	<b>8.2%</b>	<b>46</b>	<b>6.5%</b>	<b>16</b>	<b>2.3%</b>	<b>0</b>	<b>0.0%</b>	<b>47</b>	<b>6.6%</b>	<b>3</b>	<b>0.4%</b>	<b>0</b>	<b>0.0%</b>	<b>111</b>	<b>15.7%</b>	<b>211</b>	<b>29.8%</b>	<b>0</b>	<b>0.0%</b>	<b>0</b>	<b>0.0%</b>	<b>6</b>	<b>0.8%</b>	<b>0</b>	<b>0.0%</b>	<b>39</b>	<b>5.5%</b>		
<b>Western Region</b>																																		
	6th	20	7	35.0%	1	5.0%	2	10.0%	0	0.0%	0	0.0%	0	0.0%	0	0.0%	0	0.0%	0	0.0%	0	0.0%	0	0.0%	0	0.0%	0	0.0%	0	0.0%	10	50.0%		
	7th	35	15	42.9%	5	14.3%	0	0.0%	0	0.0%	0	0.0%	7	20.0%	2	5.7%	0	0.0%	1	2.9%	5	14.3%	0	0.0%	0	0.0%	0	0.0%	0	0.0%	0	0.0%		
	9th	26	8	30.8%	6	23.1%	5	19.2%	0	0.0%	0	0.0%	2	7.7%	0	0.0%	0	0.0%	0	0.0%	2	7.7%	0	0.0%	0	0.0%	0	0.0%	0	0.0%	3	11.5%		
	14th	12	2	16.7%	1	8.3%	0	0.0%	0	0.0%	0	0.0%	0	0.0%	0	0.0%	0	0.0%	1	8.3%	1	8.3%	0	0.0%	0	0.0%	0	0.0%	0	0.0%	7	58.3%		
	21st	126	38	30.2%	14	11.1%	1	0.8%	0	0.0%	0	0.0%	6	4.8%	0	0.0%	0	0.0%	13	10.3%	52	41.3%	0	0.0%	0	0.0%	0	0.0%	0	0.0%	2	1.6%		
	22nd	10	1	10.0%	0	0.0%	2	20.0%	0	0.0%	0	0.0%	0	0.0%	0	0.0%	0	0.0%	1	10.0%	5	50.0%	1	10.0%	0	0.0%	0	0.0%	0	0.0%	0	0.0%		
<b>Western Total</b>		<b>229</b>	<b>71</b>	<b>31.0%</b>	<b>27</b>	<b>11.8%</b>	<b>10</b>	<b>4.4%</b>	<b>0</b>	<b>0.0%</b>	<b>0</b>	<b>0.0%</b>	<b>15</b>	<b>6.6%</b>	<b>2</b>	<b>0.9%</b>	<b>0</b>	<b>0.0%</b>	<b>16</b>	<b>7.0%</b>	<b>65</b>	<b>28.4%</b>	<b>1</b>	<b>0.4%</b>	<b>0</b>	<b>0.0%</b>	<b>0</b>	<b>0.0%</b>	<b>0</b>	<b>0.0%</b>	<b>22</b>	<b>9.6%</b>		
<b>Individual RD Totals</b>		<b>3,262</b>	<b>933</b>	<b>28.6%</b>	<b>411</b>	<b>12.6%</b>	<b>172</b>	<b>5.3%</b>	<b>22</b>	<b>0.7%</b>	<b>0</b>	<b>0.0%</b>	<b>138</b>	<b>4.2%</b>	<b>11</b>	<b>0.3%</b>	<b>0</b>	<b>0.0%</b>	<b>365</b>	<b>11.2%</b>	<b>1014</b>	<b>31.1%</b>	<b>11</b>	<b>0.3%</b>	<b>0</b>	<b>0.0%</b>	<b>8</b>	<b>0.2%</b>	<b>2</b>	<b>0.1%</b>	<b>175</b>	<b>5.4%</b>		
<b>Statewide Totals</b>		<b>3,262</b>	<b>1,344</b>	<b>41.2%</b>	<b>194</b>	<b>5.9%</b>					<b>149</b>			<b>4.6%</b>			<b>1379</b>		<b>42.3%</b>		<b>11</b>		<b>10</b>		<b>0.3%</b>			<b>175</b>	<b>5.4%</b>					

# December 2015 SB94 Supplemental Report

## DYC Detention Maximum Youth Served by Judicial District<sup>1</sup>

Region	JD	Detention Capacity	Detention ADP		Maximum Youth Served on a Single Day <sup>2,3</sup>			
			December 2015	YTD	December 2015		YTD	
					Number of Youth	% of Detention Capacity	Number of Youth	% of Detention Capacity
<i>Central Region</i>								
	1st	37	22.1	23.8	29	78.4%	37	100.0%
	2nd	64	52.5	53.0	61	95.3%	64	100.0%
	5th	4	2.5	3.3	3	75.0%	6	150.0%
	18th	61	33.8	41.2	40	65.6%	55	90.2%
<b>Central Region</b>		<b>166</b>	<b>110.9</b>	<b>121.3</b>	<b>123</b>	<b>74.1%</b>	<b>140</b>	<b>84.3%</b>
<i>Northeast Region</i>								
	8th	21	8.7	14.6	13	61.9%	22	104.8%
	13th	5	3.3	3.3	6	120.0%	10	200.0%
	17th	30	24.4	25.8	31	103.3%	31	103.3%
	19th	25	19.9	19.7	27	108.0%	31	124.0%
	20th	13	4.0	5.5	8	61.5%	13	100.0%
<b>Northeast Region</b>		<b>94</b>	<b>60.3</b>	<b>68.9</b>	<b>73</b>	<b>77.7%</b>	<b>95</b>	<b>101.1%</b>
<i>Southern Region</i>								
	3rd	2	0.5	1.5	2	100.0%	3	150.0%
	4th	51	41.5	40.4	52	102.0%	53	103.9%
	10th	13	8.1	11.6	15	115.4%	21	161.5%
	11th	8	2.6	2.5	6	75.0%	7	87.5%
	12th	4	2.5	1.7	4	100.0%	4	100.0%
	15th	2	1.3	1.2	3	150.0%	3	150.0%
	16th	3	0.0	0.7	0	0.0%	2	66.7%
<b>Southern Region</b>		<b>83</b>	<b>56.4</b>	<b>59.5</b>	<b>64</b>	<b>77.1%</b>	<b>75</b>	<b>90.4%</b>
<i>Western Region</i>								
	6th	5	0.1	1.1	1	20.0%	3	60.0%
	7th	7	5.2	4.0	6	85.7%	8	114.3%
	9th	6	7.0	4.0	10	166.7%	10	166.7%
	14th	3	2.6	1.1	4	133.3%	4	133.3%
	21st	14	8.5	11.8	12	85.7%	19	135.7%
	22nd	4	0.0	1.2	1	25.0%	4	100.0%
<b>Western Region</b>		<b>39</b>	<b>23.4</b>	<b>23.2</b>	<b>28</b>	<b>71.8%</b>	<b>30</b>	<b>76.9%</b>
<i>Missing JD or Multiple JDs</i>			1.8	2.1				
<b>Statewide</b>		<b>382</b>	<b>252.8</b>	<b>274.9</b>	<b>278</b>	<b>72.8%</b>	<b>312</b>	<b>81.7%</b>

<sup>1</sup> Maximum youth served is the highest number of youth in detention on a single day during the month or fiscal year.

<sup>2</sup> Regional figures are not the sum of judicial districts, but represent the maximum count on one day for the entire region.

<sup>3</sup> State figures are not the sum of regional figures, but represent the maximum count on one day for the entire state.

## December 2015 SB94 Supplemental Report

### SB94 Community ADP by Judicial District

Region	JD	Committed		Diversion		ICJ		Municipal		Pre-Adjudicated		Sentenced		VCO		Total	
		December	YTD	December	YTD	December	YTD	December	YTD	December	YTD	December	YTD	December	YTD	December	YTD
<i>Central Region</i>																	
	1st	2.0	0.6	0.0	0.0	0.0	0.0	0.0	0.1	247.8	215.3	16.4	15.5	0.0	0.0	266.1	231.5
	2nd	2.1	0.7	0.0	0.0	0.0	0.0	0.0	0.0	230.4	233.6	76.6	68.5	1.2	1.7	310.3	304.5
	5th	0.0	0.0	0.0	0.0	0.0	0.0	0.0	0.0	15.5	13.6	27.5	29.1	0.0	0.0	43.0	42.7
	18th	1.2	0.5	1.0	1.0	0.0	0.0	0.0	0.0	328.0	296.8	35.7	40.6	1.0	0.4	366.9	339.3
<b>Central Total</b>		<b>5.3</b>	<b>1.8</b>	<b>1.0</b>	<b>1.0</b>	<b>0.0</b>	<b>0.1</b>	<b>0.0</b>	<b>0.1</b>	<b>821.7</b>	<b>759.3</b>	<b>156.1</b>	<b>153.6</b>	<b>2.2</b>	<b>2.0</b>	<b>986.4</b>	<b>917.9</b>
<i>Northeast Region</i>																	
	8th	0.0	0.0	0.0	0.0	0.0	0.0	0.0	0.0	59.0	47.9	49.8	35.0	0.0	0.0	108.8	82.9
	13th	0.0	0.0	0.0	0.0	0.0	0.0	0.0	0.0	18.8	14.9	10.3	10.3	3.0	3.7	32.1	28.9
	17th	0.0	0.6	0.0	0.0	0.0	0.0	1.0	1.0	126.9	106.8	39.6	37.3	0.0	0.0	167.6	145.6
	19th	0.2	0.2	0.0	0.0	0.0	0.0	0.0	0.0	66.2	57.7	55.0	49.8	0.5	0.1	121.9	107.7
	20th	1.4	1.2	0.0	0.0	0.0	0.0	0.0	0.0	99.6	77.7	55.0	51.5	0.0	0.0	156.0	130.4
<b>Northeast Total</b>		<b>1.7</b>	<b>2.0</b>	<b>0.0</b>	<b>0.0</b>	<b>0.0</b>	<b>0.0</b>	<b>1.0</b>	<b>1.0</b>	<b>370.5</b>	<b>305.0</b>	<b>209.7</b>	<b>183.8</b>	<b>3.5</b>	<b>3.7</b>	<b>586.4</b>	<b>495.5</b>
<i>Southern Region</i>																	
	3rd	0.0	0.1	0.0	0.0	0.0	0.0	0.0	0.0	13.4	7.4	2.1	3.5	2.0	2.0	17.6	12.9
	4th	3.0	1.8	0.0	0.0	0.0	0.0	2.0	2.0	183.2	155.2	134.3	113.3	4.0	2.4	326.6	274.7
	10th	2.0	1.0	0.0	0.0	0.0	0.0	76.8	47.8	17.9	20.9	11.8	15.0	10.9	9.4	119.4	94.1
	11th	0.0	0.0	0.0	0.0	0.0	0.0	0.0	0.3	17.1	14.5	28.8	24.8	0.0	0.0	46.0	39.6
	12th	0.0	0.0	0.0	0.0	0.0	0.0	0.0	0.0	6.6	8.0	6.9	6.0	0.0	0.0	13.5	14.0
	15th	0.0	0.0	0.0	0.0	0.0	0.0	0.0	0.0	3.5	3.0	7.6	5.5	0.0	0.0	11.1	8.5
	16th	0.0	0.0	0.0	0.0	0.0	0.0	0.0	0.0	3.0	3.1	14.0	14.3	4.0	4.0	21.0	21.5
<b>Southern Total</b>		<b>5.0</b>	<b>2.8</b>	<b>0.0</b>	<b>0.0</b>	<b>0.0</b>	<b>0.0</b>	<b>78.8</b>	<b>50.1</b>	<b>244.8</b>	<b>212.1</b>	<b>205.7</b>	<b>182.5</b>	<b>20.9</b>	<b>17.7</b>	<b>555.1</b>	<b>465.2</b>
<i>Western Region</i>																	
	6th	0.0	0.0	0.0	0.0	0.0	0.0	0.0	0.0	9.6	11.2	0.0	0.0	1.0	1.0	10.6	12.2
	7th	0.0	0.0	3.0	0.7	0.0	0.0	0.6	0.3	16.8	15.4	15.0	13.7	1.0	0.4	36.4	30.5
	9th	0.0	0.0	0.0	0.0	0.0	0.0	0.0	0.0	14.5	9.9	5.8	4.5	0.0	0.0	20.3	14.3
	14th	0.0	0.0	0.0	0.0	0.0	0.0	0.0	0.0	4.7	5.4	2.5	1.7	0.0	0.0	7.1	7.0
	21st	0.0	0.0	0.0	0.0	0.0	0.0	0.0	0.0	45.8	45.0	9.8	10.5	0.0	0.0	55.6	55.5
	22nd	0.0	0.0	0.0	0.0	0.0	0.0	0.0	0.0	1.3	3.2	1.5	1.3	0.0	0.0	2.8	4.5
<b>Western Total</b>		<b>0.0</b>	<b>0.0</b>	<b>3.0</b>	<b>0.7</b>	<b>0.0</b>	<b>0.0</b>	<b>0.6</b>	<b>0.3</b>	<b>92.7</b>	<b>89.9</b>	<b>34.6</b>	<b>31.7</b>	<b>2.0</b>	<b>1.4</b>	<b>132.9</b>	<b>124.0</b>
<b>Statewide Total</b>		<b>12.0</b>	<b>6.6</b>	<b>4.0</b>	<b>1.7</b>	<b>0.0</b>	<b>0.1</b>	<b>80.5</b>	<b>51.5</b>	<b>1529.7</b>	<b>1366.2</b>	<b>606.2</b>	<b>551.6</b>	<b>28.6</b>	<b>24.9</b>	<b>2260.8</b>	<b>2002.7</b>