

November 2015  
FY 2015-2016  
SB94 JDSAG SUPPLEMENTAL REPORT

Prepared by the Division of Youth Corrections (DYC)  
Research and Evaluation Unit  
December 31, 2015



**COLORADO**

**Office of Children,  
Youth & Families**

Division of Youth Corrections

# November 2015 SB94 Supplemental Report

## DYC Commitment ADP & New Commitments by Judicial District

Region	JD <sup>1</sup>	2016 Population Estimates <sup>2</sup>	ADP <sup>3</sup>		New Commitments		
			November 2015	YTD	November 2015	YTD	YTD Rate <sup>4</sup>
<i>Central Region</i>							
	1st	55,832	66.9	71.0	1	18	3.2
	2nd	60,479	129.7	136.5	6	23	3.8
	5th	9,792	9.7	10.7	0	0	0.0
	18th	117,684	74.4	79.3	4	16	1.4
<b>Central Total</b>		<b>243,787</b>	<b>280.8</b>	<b>297.6</b>	<b>11</b>	<b>57</b>	<b>2.3</b>
<i>Northeast Region</i>							
	8th	31,855	42.7	40.6	4	18	5.7
	13th	8,467	8.4	8.5	0	2	2.4
	17th	69,058	79.9	87.6	5	15	2.2
	19th	35,275	55.5	54.5	1	17	4.8
	20th	32,027	13.1	13.2	0	3	0.9
<b>Northeast Total</b>		<b>176,682</b>	<b>199.6</b>	<b>204.3</b>	<b>10</b>	<b>55</b>	<b>3.1</b>
<i>Southern Region</i>							
	3rd	1,880	2.0	2.5	0	0	0.0
	4th	80,316	89.5	95.7	1	15	1.9
	10th	17,742	40.6	38.4	1	13	7.3
	11th	7,203	6.0	6.0	0	1	1.4
	12th	5,251	5.3	4.9	1	2	3.8
	15th	2,174	2.0	1.9	0	1	4.6
	16th	2,795	0.7	1.5	0	1	3.6
<b>Southern Total</b>		<b>117,361</b>	<b>146.2</b>	<b>150.9</b>	<b>3</b>	<b>33</b>	<b>2.8</b>
<i>Western Region</i>							
	6th	6,232	10.8	13.0	0	0	0.0
	7th	10,543	10.0	9.0	0	2	1.9
	9th	9,287	3.2	5.0	0	1	1.1
	14th	5,553	2.0	2.7	0	0	0.0
	21st	15,602	31.8	28.6	2	12	7.7
	22nd	3,036	4.2	5.3	0	1	3.3
<b>Western Total</b>		<b>50,253</b>	<b>62.0</b>	<b>63.6</b>	<b>2</b>	<b>16</b>	<b>3.2</b>
<b>Statewide Total</b>		<b>588,083</b>	<b>688.6</b>	<b>716.3</b>	<b>26</b>	<b>161</b>	<b>2.7</b>

<sup>1</sup> JD represents the judicial district in which the client was committed. Regional totals are a sum of their respective judicial districts. Regional totals reported here may differ slightly from those reported in the Monthly Population Report, where region is defined by active caseloads.

<sup>2</sup> Source: DOLA 2016 Estimates

<sup>3</sup> Due to rounding, totals shown may not be an exact sum of the subtotals.

<sup>4</sup> Per 10,000 youth in the population

# November 2015

## SB94 Supplemental Report

### DYC Detention ADP and New Detention Admissions by Judicial District

Region	JD	2016 Population Estimates <sup>1</sup>	ADP		New Admits		
			November 2015	YTD	November 2015	YTD	YTD New Admit Rate <sup>2</sup>
<i>Central Region</i>							
	1st	55,832	25.2	24.1	45	241	43.2
	2nd	60,479	53.7	53.1	102	488	80.7
	5th	9,792	4.9	4.1	2	23	23.5
	18th	117,684	40.4	42.7	68	454	38.6
<b>Central Total</b>		<b>243,787</b>	<b>124.1</b>	<b>124.1</b>	<b>217</b>	<b>1,206</b>	<b>49.5</b>
<i>Northeast Region</i>							
	8th	31,855	14.5	15.8	26	179	56.2
	13th	8,467	4.2	3.3	9	36	42.5
	17th	69,058	27.8	26.1	46	225	32.6
	19th	35,275	22.3	20.2	40	208	59.0
	20th	32,027	6.5	5.8	26	123	38.4
<b>Northeast Total</b>		<b>176,682</b>	<b>75.2</b>	<b>71.1</b>	<b>147</b>	<b>771</b>	<b>43.6</b>
<i>Southern Region</i>							
	3rd	1,880	1.6	1.7	4	10	53.2
	4th	80,316	43.7	40.3	51	319	39.7
	10th	17,742	11.1	12.3	32	186	104.8
	11th	7,203	2.2	2.5	13	54	75.0
	12th	5,251	2.1	1.5	7	23	43.8
	15th	2,174	0.8	1.2	0	6	27.6
	16th	2,795	0.0	0.8	0	6	21.5
<b>Southern Total</b>		<b>117,361</b>	<b>61.4</b>	<b>60.3</b>	<b>107</b>	<b>604</b>	<b>51.5</b>
<i>Western Region</i>							
	6th	6,232	1.2	1.3	2	19	30.5
	7th	10,543	2.2	3.8	7	32	30.4
	9th	9,287	6.0	3.4	6	22	23.7
	14th	5,553	1.5	0.8	2	8	14.4
	21st	15,602	12.1	12.4	14	102	65.4
	22nd	3,036	0.6	1.5	0	9	29.6
<b>Western Total</b>		<b>50,253</b>	<b>23.5</b>	<b>23.2</b>	<b>31</b>	<b>192</b>	<b>38.2</b>
<i>Missing JD or Multiple JDs</i>			2.3	2.1			
<b>Statewide Total</b>		<b>588,083</b>	<b>286.5</b>	<b>280.7</b>	<b>502</b>	<b>2,773</b>	<b>47.2</b>

<sup>1</sup> Source: DOLA 2016 Estimates

<sup>2</sup> Per 10,000 youth in the population

# November 2015 SB94 Supplemental Report

DYC Detention LOS by Judicial District				
Region	JD	YTD Detention Releases	YTD LOS (days)	LOS (days) Compared to State AVG
<i>Central Region</i>				
	1st	238	17.4	2.2
	2nd	493	15.2	-0.1
	5th	23	23.6	8.3
	18th	465	13.0	-2.3
<b>Central Total</b>		<b>1,219</b>	<b>15.0</b>	<b>-0.3</b>
<i>Northeast Region</i>				
	8th	196	12.9	-2.4
	13th	36	13.0	-2.3
	17th	228	13.8	-1.4
	19th	215	19.0	3.7
	20th	123	6.0	-9.2
<b>Northeast Total</b>		<b>798</b>	<b>13.8</b>	<b>-1.5</b>
<i>Southern Region</i>				
	3rd	9	30.7	15.5
	4th	314	18.3	3.0
	10th	188	9.8	-5.5
	11th	54	7.2	-8.0
	12th	22	9.1	-6.2
	15th	8	25.1	9.9
	16th	7	18.3	3.0
<b>Southern Total</b>		<b>602</b>	<b>14.6</b>	<b>-0.7</b>
<i>Western Region</i>				
	6th	19	8.2	-7.1
	7th	30	16.7	1.4
	9th	16	21.2	5.9
	14th	7	18.9	3.7
	21st	95	14.5	-0.8
	22nd	10	23.7	8.5
<b>Western Total</b>		<b>177</b>	<b>15.5</b>	<b>0.2</b>
<b>Statewide Total</b>		<b>2,794</b>	<b>15.3</b>	<b>-</b>

**November 2015**  
**SB94 JDSAG Supplemental Report**

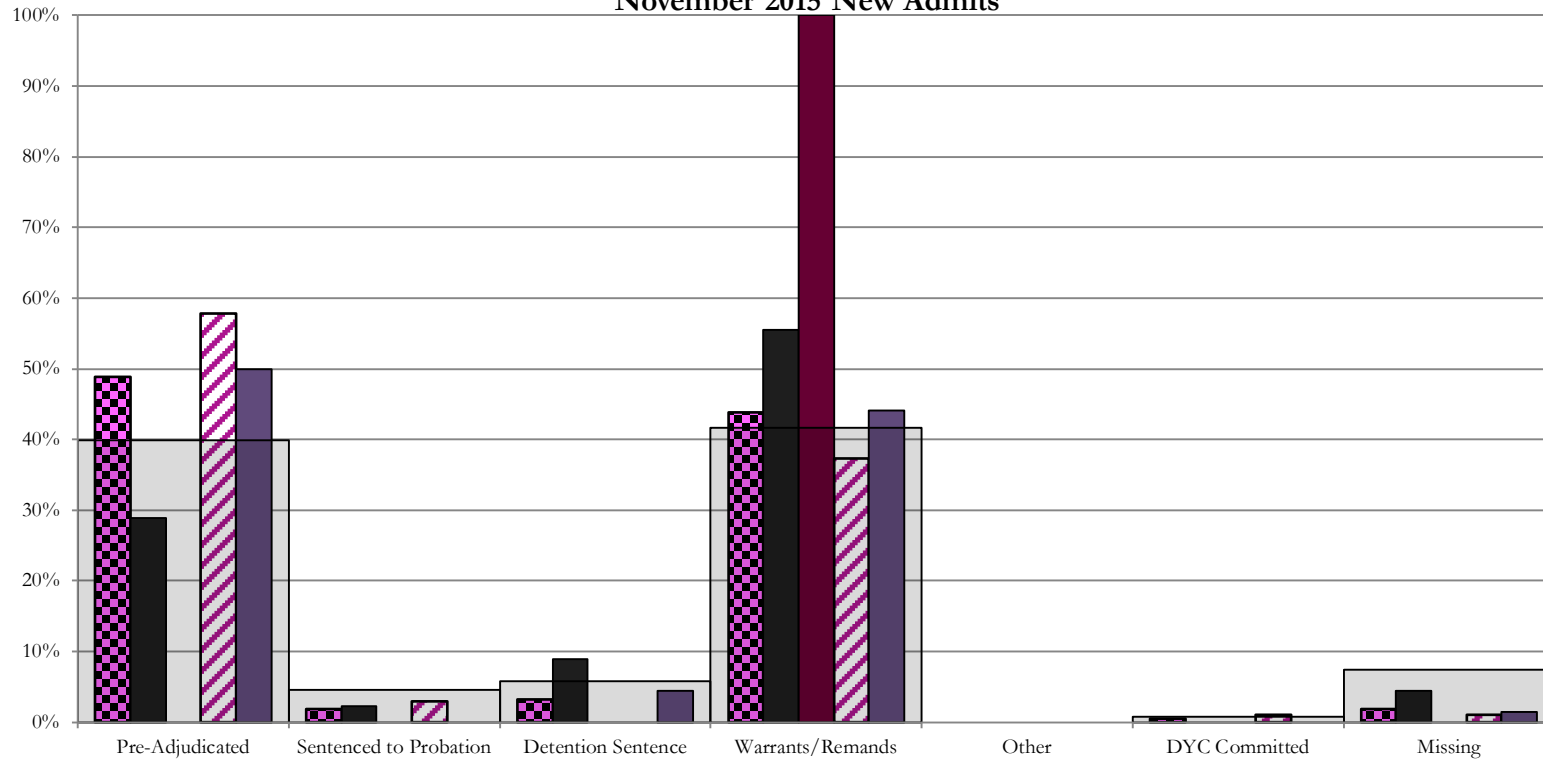
SB94 Reason Detained (RD) by Judicial District

Region	JD	Pre-Adjudicated				Sentenced to Probation				Detention Sentence								Warrants/Remands				Other						DYC Committed		Missing						
		Felony		Misdemeanor		Technical Violator		New Charges		Probation Sentence		Detention Sentence		Valid Court Order (VCO) Truancy		Awaiting DSS (Social Services) Placement		Failure to Appear (FTA)		Failure to Comply (FTC)		Interstate Compact on Juveniles (ICJ) Hold		Immigration Hold		No Bond Hold		Out-of-Country Warrant		Institutional		Parole		Missing		
		#	%	#	%	#	%	#	%	#	%	#	%	#	%	#	%	#	%	#	%	#	%	#	%	#	%	#	%	#	%	#	%	#	%	
<b>Central Region</b>																																				
	1st	45	7	15.6%	6	13.3%	1	2.2%	0	0.0%	0	0.0%	4	8.9%	0	0.0%	0	0.0%	4	8.9%	21	46.7%	0	0.0%	0	0.0%	0	0.0%	0	0.0%	0	0.0%	0	0.0%	2	4.4%
	2nd	102	48	47.1%	11	10.8%	1	1.0%	2	2.0%	0	0.0%	0	0.0%	0	0.0%	0	0.0%	9	8.8%	29	28.4%	0	0.0%	0	0.0%	0	0.0%	0	0.0%	0	0.0%	1	1.0%	1	1.0%
	5th	2	0	0.0%	0	0.0%	0	0.0%	0	0.0%	0	0.0%	0	0.0%	0	0.0%	0	0.0%	2	100.0%	0	0.0%	0	0.0%	0	0.0%	0	0.0%	0	0.0%	0	0.0%	0	0.0%	0	0.0%
	18th	68	20	29.4%	14	20.6%	0	0.0%	0	0.0%	0	0.0%	3	4.4%	0	0.0%	0	0.0%	8	11.8%	22	32.4%	0	0.0%	0	0.0%	0	0.0%	0	0.0%	0	0.0%	0	0.0%	1	1.5%
	<b>Central Total</b>	<b>217</b>	<b>75</b>	<b>35%</b>	<b>31</b>	<b>14%</b>	<b>2</b>	<b>0.9%</b>	<b>2</b>	<b>0.9%</b>	<b>0</b>	<b>0.0%</b>	<b>7</b>	<b>3.2%</b>	<b>0</b>	<b>0.0%</b>	<b>0</b>	<b>0.0%</b>	<b>21</b>	<b>10%</b>	<b>74</b>	<b>34%</b>	<b>0</b>	<b>0.0%</b>	<b>0</b>	<b>0.0%</b>	<b>0</b>	<b>0.0%</b>	<b>0</b>	<b>0.0%</b>	<b>0</b>	<b>0.0%</b>	<b>1</b>	<b>0.5%</b>	<b>4</b>	<b>1.8%</b>
<b>Northeast Region</b>																																				
	8th	26	4	15.4%	3	11.5%	0	0.0%	0	0.0%	0	0.0%	1	3.8%	0	0.0%	0	0.0%	3	11.5%	10	38.5%	0	0.0%	0	0.0%	0	0.0%	0	0.0%	0	0.0%	0	0.0%	5	19.2%
	13th	9	0	0.0%	5	55.6%	1	11.1%	0	0.0%	0	0.0%	0	0.0%	0	0.0%	0	0.0%	3	33.3%	0	0.0%	0	0.0%	0	0.0%	0	0.0%	0	0.0%	0	0.0%	0	0.0%	0	0.0%
	17th	46	11	23.9%	5	10.9%	0	0.0%	0	0.0%	0	0.0%	0	0.0%	0	0.0%	0	0.0%	4	8.7%	22	47.8%	0	0.0%	0	0.0%	0	0.0%	0	0.0%	0	0.0%	0	0.0%	5	10.9%
	19th	40	9	22.5%	9	22.5%	11	27.5%	0	0.0%	0	0.0%	0	0.0%	2	5.0%	0	0.0%	5	12.5%	4	10.0%	0	0.0%	0	0.0%	0	0.0%	0	0.0%	0	0.0%	0	0.0%	0	0.0%
	20th	26	4	15.4%	3	11.5%	0	0.0%	0	0.0%	0	0.0%	4	15.4%	0	0.0%	0	0.0%	1	3.8%	4	15.4%	0	0.0%	0	0.0%	0	0.0%	0	0.0%	0	0.0%	0	0.0%	10	38.5%
	<b>Northeast Total</b>	<b>147</b>	<b>28</b>	<b>19%</b>	<b>25</b>	<b>17%</b>	<b>12</b>	<b>8.2%</b>	<b>0</b>	<b>0.0%</b>	<b>0</b>	<b>0.0%</b>	<b>5</b>	<b>3.4%</b>	<b>2</b>	<b>1.4%</b>	<b>0</b>	<b>0.0%</b>	<b>13</b>	<b>8.8%</b>	<b>43</b>	<b>29%</b>	<b>0</b>	<b>0.0%</b>	<b>0</b>	<b>0.0%</b>	<b>0</b>	<b>0.0%</b>	<b>0</b>	<b>0.0%</b>	<b>0</b>	<b>0.0%</b>	<b>0</b>	<b>0.0%</b>	<b>19</b>	<b>13%</b>
<b>Southern Region</b>																																				
	3rd	4	2	50.0%	0	0.0%	0	0.0%	0	0.0%	0	0.0%	0	0.0%	0	0.0%	0	0.0%	0	0.0%	0	0.0%	0	0.0%	0	0.0%	0	0.0%	0	0.0%	0	0.0%	0	0.0%	2	50.0%
	4th	51	13	25.5%	3	5.9%	4	7.8%	2	3.9%	0	0.0%	0	0.0%	0	0.0%	0	0.0%	10	19.6%	14	27.5%	0	0.0%	0	0.0%	0	0.0%	0	0.0%	1	2.0%	0	0.0%	4	7.8%
	10th	32	2	6.3%	3	9.4%	0	0.0%	0	0.0%	0	0.0%	10	31.3%	0	0.0%	0	0.0%	7	21.9%	7	21.9%	0	0.0%	0	0.0%	0	0.0%	2	6.3%	0	0.0%	1	3.1%	0	0.0%
	11th	13	2	15.4%	3	23.1%	0	0.0%	0	0.0%	0	0.0%	2	15.4%	0	0.0%	0	0.0%	3	23.1%	3	23.1%	0	0.0%	0	0.0%	0	0.0%	0	0.0%	0	0.0%	0	0.0%	0	0.0%
	12th	7	1	14.3%	0	0.0%	0	0.0%	0	0.0%	0	0.0%	0	0.0%	0	0.0%	0	0.0%	1	14%	3	42.9%	0	0.0%	0	0.0%	0	0.0%	0	0.0%	0	0.0%	2	28.6%	0	0.0%
	15th	0	0	0.0%	0	0.0%	0	0.0%	0	0.0%	0	0.0%	0	0.0%	0	0.0%	0	0.0%	0	0.0%	0	0%	0	0.0%	0	0.0%	0	0.0%	0	0.0%	0	0.0%	0	0.0%	0	0.0%
	16th	0	0	0.0%	0	0.0%	0	0.0%	0	0.0%	0	0.0%	0	0.0%	0	0.0%	0	0.0%	0	0.0%	0	0%	0	0.0%	0	0.0%	0	0.0%	0	0.0%	0	0.0%	0	0.0%	0	0.0%
	<b>Southern Total</b>	<b>107</b>	<b>20</b>	<b>19%</b>	<b>9</b>	<b>8%</b>	<b>4</b>	<b>3.7%</b>	<b>2</b>	<b>1.9%</b>	<b>0</b>	<b>0.0%</b>	<b>12</b>	<b>11.2%</b>	<b>0</b>	<b>0.0%</b>	<b>0</b>	<b>0.0%</b>	<b>21</b>	<b>20%</b>	<b>27</b>	<b>25%</b>	<b>0</b>	<b>0.0%</b>	<b>0</b>	<b>0.0%</b>	<b>0</b>	<b>0.0%</b>	<b>0</b>	<b>0.0%</b>	<b>3</b>	<b>2.8%</b>	<b>0</b>	<b>0.0%</b>	<b>9</b>	<b>8%</b>
<b>Western Region</b>																																				
	6th	2	0	0.0%	0	0.0%	0	0.0%	0	0.0%	0	0.0%	0	0.0%	0	0.0%	0	0.0%	0	0.0%	0	0.0%	0	0.0%	0	0.0%	0	0.0%	0	0.0%	0	0.0%	2	100%		
	7th	7	5	71.4%	1	14.3%	0	0.0%	0	0.0%	0	0.0%	0	0.0%	0	0.0%	0	0.0%	0	0.0%	0	0.0%	0	0.0%	0	0.0%	0	0.0%	0	0.0%	0	0.0%	1	14.3%	0	0.0%
	9th	6	2	33.3%	1	16.7%	1	16.7%	0	0.0%	0	0.0%	0	0.0%	0	0.0%	0	0.0%	1	16.7%	0	0.0%	0	0.0%	0	0.0%	0	0.0%	0	0.0%	0	0.0%	0	0.0%	1	16.7%
	14th	2	0	0.0%	0	0.0%	0	0.0%	0	0.0%	0	0.0%	0	0.0%	0	0.0%	0	0.0%	0	0.0%	0	0.0%	0	0.0%	0	0.0%	0	0.0%	0	0.0%	0	0.0%	2	100.0%	0	0.0%
	21st	14	2	14.3%	1	7.1%	0	0.0%	0	0.0%	0	0.0%	2	14.3%	0	0.0%	0	0.0%	2	14.3%	7	50.0%	0	0.0%	0	0.0%	0	0.0%	0	0.0%	0	0.0%	0	0.0%	0	0.0%
	22nd	0	0	0.0%	0	0.0%	0	0.0%	0	0.0%	0	0.0%	0	0.0%	0	0.0%	0	0.0%	0	0.0%	0	0.0%	0	0.0%	0	0.0%	0	0.0%	0	0.0%	0	0.0%	0	0.0%	0	0.0%
	<b>Western Total</b>	<b>31</b>	<b>9</b>	<b>29%</b>	<b>3</b>	<b>9.7%</b>	<b>1</b>	<b>3.2%</b>	<b>0</b>	<b>0.0%</b>	<b>0</b>	<b>0.0%</b>	<b>2</b>	<b>6.5%</b>	<b>0</b>	<b>0.0%</b>	<b>0</b>	<b>0.0%</b>	<b>2</b>	<b>6.5%</b>	<b>8</b>	<b>26%</b>	<b>0</b>	<b>0.0%</b>	<b>0</b>	<b>0.0%</b>	<b>0</b>	<b>0.0%</b>	<b>0</b>	<b>0.0%</b>	<b>0</b>	<b>0.0%</b>	<b>6</b>	<b>19%</b>		
	<b>Individual RD Totals</b>	<b>502</b>	<b>132</b>	<b>26%</b>	<b>68</b>	<b>14%</b>	<b>19</b>	<b>3.8%</b>	<b>4</b>	<b>0.8%</b>	<b>0</b>	<b>0.0%</b>	<b>26</b>	<b>5.2%</b>	<b>3</b>	<b>0.6%</b>	<b>0</b>	<b>0.0%</b>	<b>57</b>	<b>11%</b>	<b>152</b>	<b>30%</b>	<b>0</b>	<b>0.0%</b>	<b>0</b>	<b>0.0%</b>	<b>0</b>	<b>0.0%</b>	<b>0</b>	<b>0.0%</b>	<b>3</b>	<b>0.6%</b>	<b>1</b>	<b>0.2%</b>	<b>37</b>	<b>7%</b>
	<b>Statewide Totals</b>	<b>502</b>	<b>200</b>	<b>39.8%</b>	<b>23</b>	<b>4.6%</b>					<b>29</b>	<b>5.8%</b>					<b>209</b>	<b>41.6%</b>	<b>0</b>	<b>0.0%</b>	<b>0</b>	<b>0.0%</b>	<b>0</b>	<b>0.0%</b>	<b>0</b>	<b>0.0%</b>	<b>4</b>	<b>0.8%</b>	<b>37</b>	<b>7%</b>						

# Central Region

## SB94 Reason Detained by Judicial District

### November 2015 New Admits



■ CENTRAL REGION, 217 New Admits

■ 5th JD, 2 New Admits

■ 18th JD, 68 New Admits

■ 1st JD, 45 New Admits

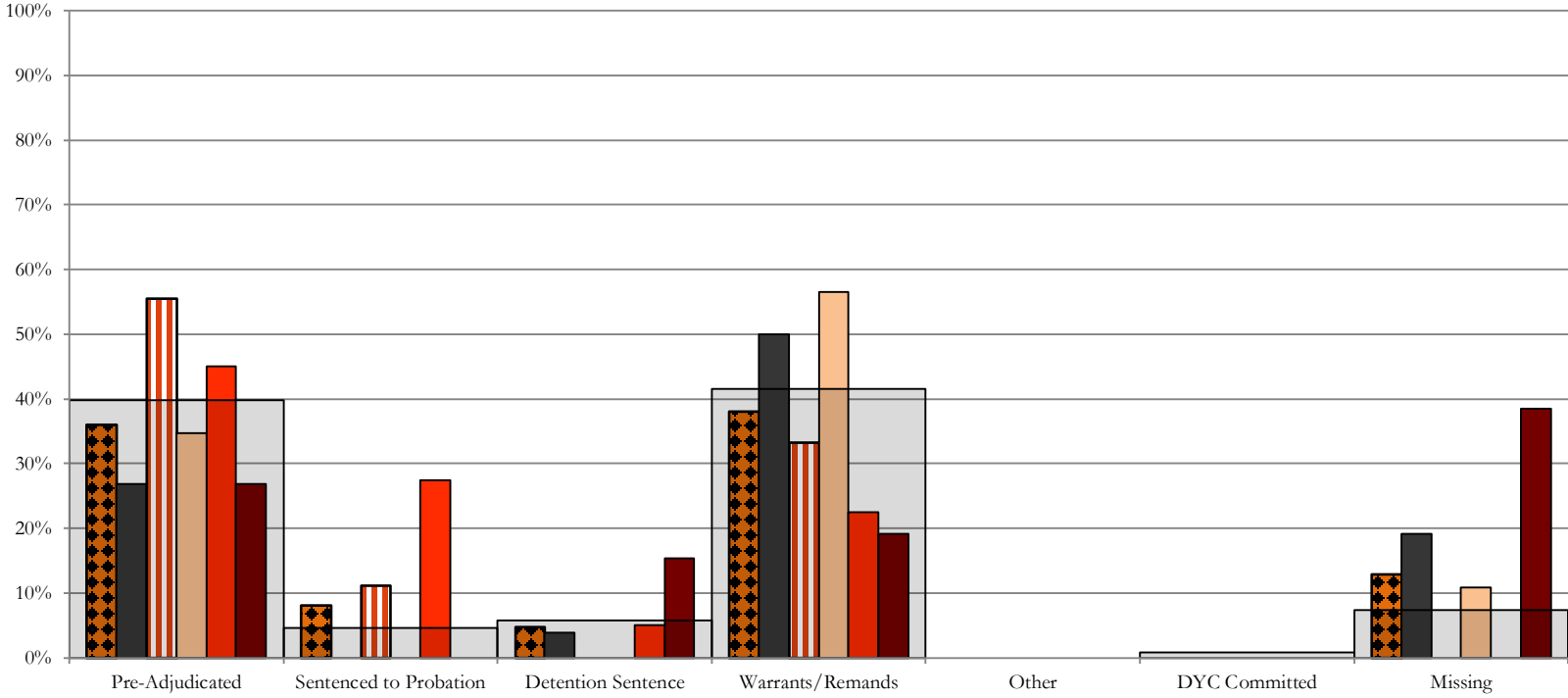
■ 2nd JD, 102 New Admits

■ STATEWIDE, 502 New Admits

# Northeast Region

## SB94 Reason Detained by Judicial District

### November 2015 New Admits



■ NORTHEAST REGION, 147 New Admits

■ 8th JD, 26 New Admits

■ 13th JD, 9 New Admits

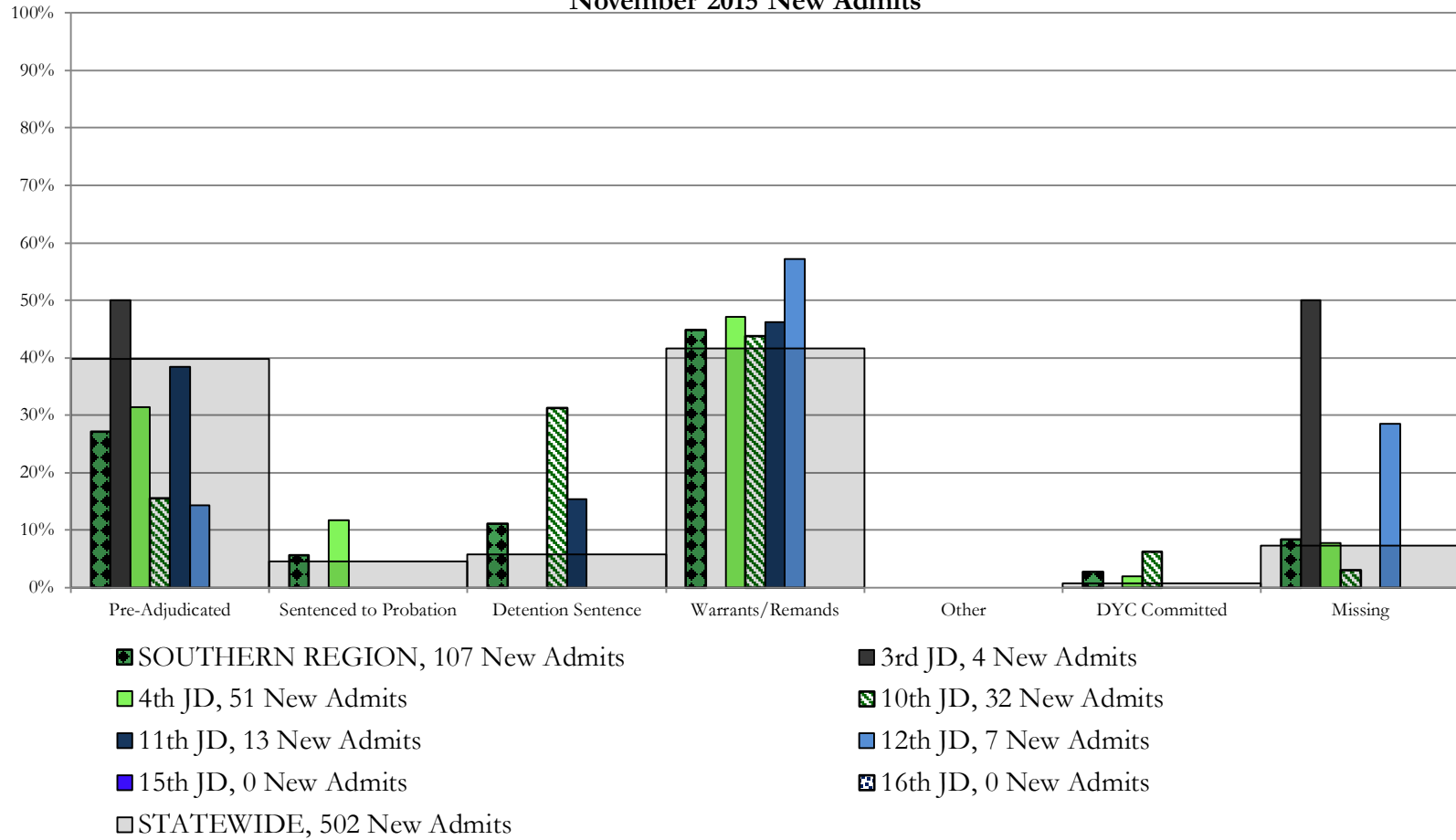
■ 17th JD, 46 New Admits

■ 19th JD, 40 New Admits

■ 20th JD, 26 New Admits

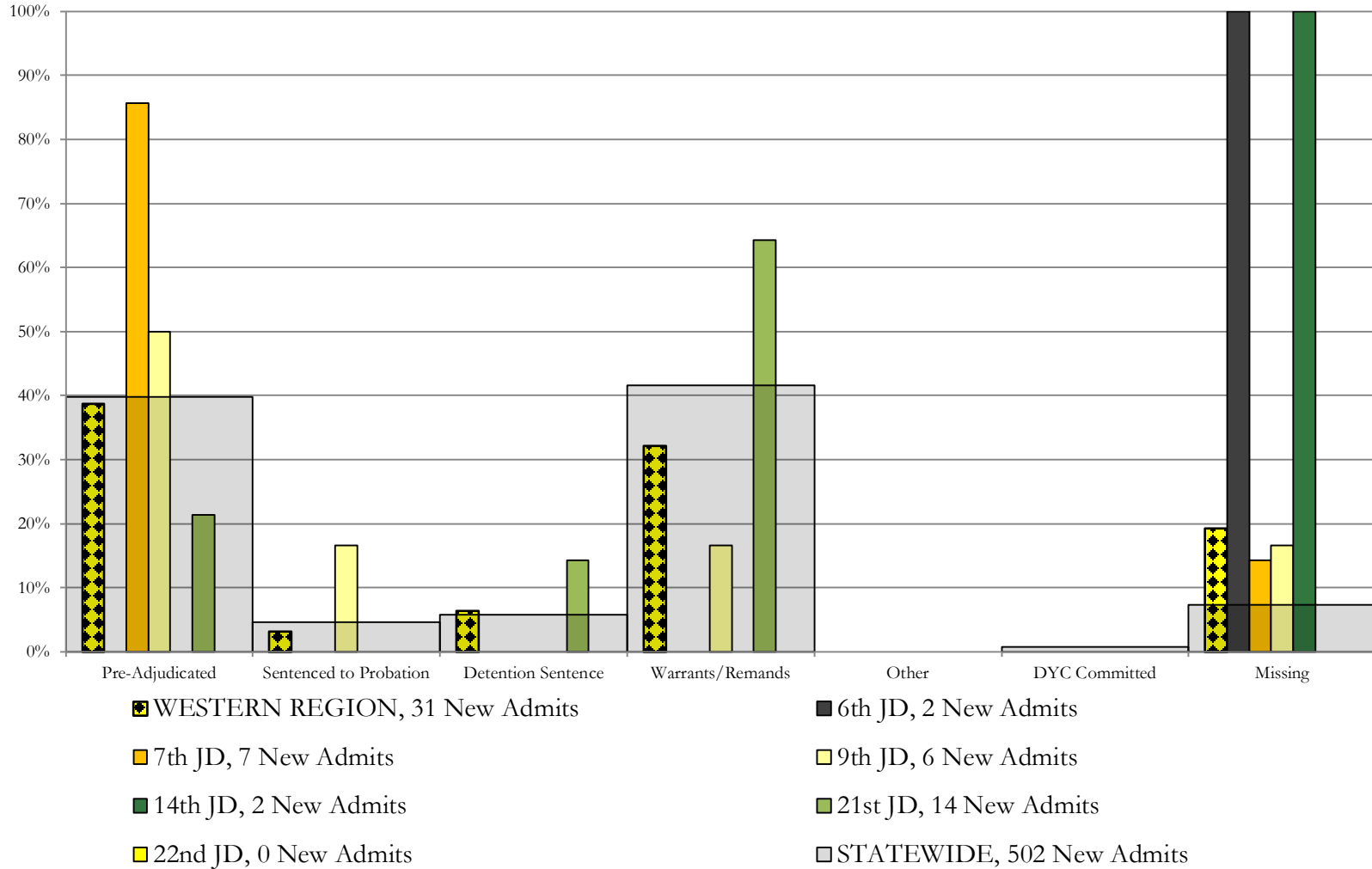
■ STATEWIDE, 502 New Admits

## Southern Region SB94 Reason Detained by Judicial District November 2015 New Admits





## Western Region SB94 Reason Detained by Judicial District November 2015 New Admits



# November 2015 SB94 Supplemental Report

## DYC Detention Maximum Youth Served by Judicial District<sup>1</sup>

Region	JD	Detention Capacity	Detention ADP		Maximum Youth Served on a Single Day <sup>2,3</sup>			
			November 2015	YTD	November 2015		YTD	
					Number of Youth	% of Detention Capacity	Number of Youth	% of Detention Capacity
<i>Central Region</i>								
	1st	37	25.2	24.1	30	81.1%	37	100.0%
	2nd	64	53.7	53.1	61	95.3%	64	100.0%
	5th	4	4.9	4.1	6	150.0%	7	175.0%
	18th	61	40.4	42.7	48	78.7%	55	90.2%
<b>Central Region</b>		<b>166</b>	<b>124.1</b>	<b>124.1</b>	<b>136</b>	<b>81.9%</b>	<b>141</b>	<b>84.9%</b>
<i>Northeast Region</i>								
	8th	21	14.5	15.8	22	104.8%	22	104.8%
	13th	5	4.2	3.3	6	120.0%	10	200.0%
	17th	30	27.8	26.1	31	103.3%	31	103.3%
	19th	25	22.3	20.2	27	108.0%	31	124.0%
	20th	13	6.5	5.8	13	100.0%	13	100.0%
<b>Northeast Region</b>		<b>94</b>	<b>75.2</b>	<b>71.1</b>	<b>93</b>	<b>98.9%</b>	<b>95</b>	<b>101.1%</b>
<i>Southern Region</i>								
	3rd	2	1.6	1.7	2	100.0%	3	150.0%
	4th	51	43.7	40.3	53	103.9%	54	105.9%
	10th	13	11.1	12.3	15	115.4%	21	161.5%
	11th	8	2.2	2.5	4	50.0%	7	87.5%
	12th	4	2.1	1.5	4	100.0%	4	100.0%
	15th	2	0.8	1.2	1	50.0%	2	100.0%
	16th	3	0.0	0.8	0	0.0%	2	66.7%
<b>Southern Region</b>		<b>83</b>	<b>61.4</b>	<b>60.3</b>	<b>73</b>	<b>88.0%</b>	<b>75</b>	<b>90.4%</b>
<i>Western Region</i>								
	6th	5	1.2	1.3	2	40.0%	3	60.0%
	7th	7	2.2	3.8	5	71.4%	8	114.3%
	9th	6	6.0	3.4	8	133.3%	8	133.3%
	14th	3	1.5	0.8	2	66.7%	2	66.7%
	21st	14	12.1	12.4	16	114.3%	19	135.7%
	22nd	4	0.6	1.5	1	25.0%	4	100.0%
<b>Western Region</b>		<b>39</b>	<b>23.5</b>	<b>23.2</b>	<b>27</b>	<b>69.2%</b>	<b>30</b>	<b>76.9%</b>
<i>Missing JD or Multiple JDs</i>			2.3	2.1				
<b>Statewide</b>		<b>382</b>	<b>286.5</b>	<b>280.7</b>	<b>314</b>	<b>82.2%</b>	<b>314</b>	<b>82.2%</b>

<sup>1</sup> Maximum youth served is the biggest number of youth in detention on a single day during the month or fiscal year.

<sup>2</sup> Regional figures are not the sum of judicial districts, but represent the maximum count on one day for the entire region.

<sup>3</sup> State figures are not the sum of regional figures, but represent the maximum count on one day for the entire state.

## November 2015 SB94 Supplemental Report

### SB94 Community ADP by Judicial District

Region	JD	Committed		ICJ		Municipal		Pre-Adjudicated		Sentenced		VCO		Total	
		November	YTD	November	YTD	November	YTD	November	YTD	November	YTD	November	YTD	November	YTD
<i>Central Region</i>															
	1st	1.1	0.3	0.0	0.0	0.0	0.1	236.5	202.7	15.0	15.3	0.0	0.0	252.7	218.4
	2nd	0.2	0.4	0.0	0.0	0.0	0.0	298.7	258.8	68.3	65.7	0.0	0.0	367.1	324.9
	5th	0.0	0.0	0.0	0.0	0.0	0.0	18.6	15.8	28.3	30.7	0.0	0.0	46.8	46.5
	18th	0.6	0.4	0.0	0.1	0.0	0.0	336.7	300.9	40.0	39.9	0.0	0.0	377.4	341.2
<b>Central Total</b>		<b>1.9</b>	<b>1.1</b>	<b>0.0</b>	<b>0.1</b>	<b>0.0</b>	<b>0.1</b>	<b>890.5</b>	<b>778.1</b>	<b>151.6</b>	<b>151.6</b>	<b>0.0</b>	<b>0.0</b>	<b>1044.1</b>	<b>931.0</b>
<i>Northeast Region</i>															
	8th	0.0	0.0	0.0	0.0	0.0	0.0	56.3	46.6	47.6	32.6	0.0	0.0	103.9	79.2
	13th	0.0	0.0	0.0	0.0	0.0	0.0	22.4	18.5	20.6	20.4	3.0	3.8	46.0	42.7
	17th	0.0	0.7	0.0	0.0	1.0	1.0	115.2	102.2	42.3	35.8	0.0	0.0	158.5	139.7
	19th	0.0	0.2	0.0	0.0	0.0	0.0	58.6	55.7	56.4	48.7	0.0	0.0	114.9	104.6
	20th	2.0	2.0	0.0	0.0	0.0	0.0	121.1	102.8	74.6	72.7	0.0	0.0	197.7	177.5
<b>Northeast Total</b>		<b>2.0</b>	<b>2.9</b>	<b>0.0</b>	<b>0.0</b>	<b>1.0</b>	<b>1.0</b>	<b>373.6</b>	<b>325.9</b>	<b>241.5</b>	<b>210.1</b>	<b>3.0</b>	<b>3.8</b>	<b>621.1</b>	<b>543.8</b>
<i>Southern Region</i>															
	3rd	0.0	0.1	0.0	0.0	0.0	0.0	7.6	5.6	5.0	4.9	2.0	2.0	14.6	12.5
	4th	2.2	1.5	0.0	0.0	2.0	2.0	185.4	158.2	125.3	110.9	3.0	2.0	317.9	274.6
	10th	1.3	0.8	0.0	0.0	61.5	42.0	25.8	21.5	12.1	15.6	10.0	9.2	110.7	88.9
	11th	0.0	0.0	0.0	0.0	0.0	0.4	18.4	15.0	26.9	24.9	0.0	0.0	45.2	40.2
	12th	0.0	0.0	0.0	0.0	0.0	0.0	8.9	8.3	6.0	5.8	0.0	0.0	14.9	14.1
	15th	0.0	0.0	0.0	0.0	0.0	0.0	4.0	2.9	6.1	5.1	0.0	0.0	10.1	7.9
	16th	0.0	0.0	0.0	0.0	0.0	0.0	3.0	3.2	14.0	14.4	4.0	4.0	21.0	21.5
<b>Southern Total</b>		<b>3.5</b>	<b>2.3</b>	<b>0.0</b>	<b>0.0</b>	<b>63.5</b>	<b>44.3</b>	<b>253.1</b>	<b>214.5</b>	<b>195.2</b>	<b>181.5</b>	<b>19.1</b>	<b>17.2</b>	<b>534.4</b>	<b>459.8</b>
<i>Western Region</i>															
	6th	0.0	0.0	0.0	0.0	0.0	0.0	12.3	11.5	0.0	0.0	1.0	1.0	13.3	12.5
	7th	0.0	0.0	0.0	0.0	0.0	0.2	13.1	15.1	14.1	13.4	1.0	0.3	28.2	29.0
	9th	0.0	0.0	0.0	0.0	0.0	0.0	11.2	9.2	5.2	4.2	0.0	0.0	16.3	13.4
	14th	0.0	0.0	0.0	0.0	0.0	0.0	4.1	5.5	2.5	1.5	0.0	0.0	6.6	7.0
	21st	0.0	0.0	0.0	0.0	0.0	0.0	41.6	45.1	6.3	10.5	0.0	0.0	47.9	55.5
	22nd	0.0	0.0	0.0	0.0	0.0	0.0	1.3	3.5	1.4	1.3	0.0	0.0	2.7	4.9
<b>Western Total</b>		<b>0.0</b>	<b>0.0</b>	<b>0.0</b>	<b>0.0</b>	<b>0.0</b>	<b>0.2</b>	<b>83.6</b>	<b>89.9</b>	<b>29.4</b>	<b>30.9</b>	<b>2.0</b>	<b>1.3</b>	<b>115.0</b>	<b>122.4</b>
<b>Statewide Total</b>		<b>7.4</b>	<b>6.3</b>	<b>0.0</b>	<b>0.1</b>	<b>64.5</b>	<b>45.7</b>	<b>1600.7</b>	<b>1408.4</b>	<b>617.8</b>	<b>574.1</b>	<b>24.1</b>	<b>22.3</b>	<b>2314.6</b>	<b>2056.9</b>