

October 2015 FY 2015-2016 SB94 JDSAG SUPPLEMENTAL REPORT

Prepared by the Division of Youth Corrections (DYC)
Research and Evaluation Unit
November 30, 2015



COLORADO

**Office of Children,
Youth & Families**

Division of Youth Corrections

October 2015 SB94 Supplemental Report

DYC Commitment ADP & New Commitments by Judicial District

Region	JD ¹	2016 Population Estimates ²	ADP ³		New Commitments		
			October 2015	YTD	October 2015	YTD	YTD Rate ⁴
<i>Central Region</i>							
	1st	55,832	69.9	72.0	5	17	3.0
	2nd	60,479	136.4	138.2	4	17	2.8
	5th	9,792	11.0	11.0	0	0	0.0
	18th	117,684	79.4	80.9	2	12	1.0
Central Total		243,787	296.7	302.0	11	46	1.9
<i>Northeast Region</i>							
	8th	31,855	40.0	39.9	6	14	4.4
	13th	8,467	9.0	8.5	0	2	2.4
	17th	69,058	87.9	89.6	1	10	1.4
	19th	35,275	56.5	54.3	1	16	4.5
	20th	32,027	14.0	13.2	0	3	0.9
Northeast Total		176,682	207.4	205.4	8	45	2.5
<i>Southern Region</i>							
	3rd	1,880	2.8	2.6	0	0	0.0
	4th	80,316	95.5	97.2	4	14	1.7
	10th	17,742	39.7	37.9	3	12	6.8
	11th	7,203	6.0	6.0	0	1	1.4
	12th	5,251	4.6	4.8	0	1	1.9
	15th	2,174	2.1	1.9	0	1	4.6
	16th	2,795	2.0	1.7	0	1	3.6
Southern Total		117,361	152.6	152.0	7	30	2.6
<i>Western Region</i>							
	6th	6,232	11.7	13.5	0	0	0.0
	7th	10,543	9.0	8.7	1	2	1.9
	9th	9,287	4.0	5.5	0	1	1.1
	14th	5,553	2.5	2.9	0	0	0.0
	21st	15,602	28.9	27.8	4	10	6.4
	22nd	3,036	4.9	5.6	0	1	3.3
Western Total		50,253	61.0	64.0	5	14	2.8
Statewide Total		588,083	717.6	723.4	31	135	2.3

¹ JD represents the judicial district in which the client was committed. Regional totals are a sum of their respective judicial districts. Regional totals reported here may differ slightly from those reported in the Monthly Population Report, where region is defined by active caseloads.

² Source: DOLA 2016 Estimates

³ Due to rounding, totals shown may not be an exact sum of the subtotals.

⁴ Per 10,000 youth in the population

October 2015 SB94 Supplemental Report

DYC Detention ADP and New Detention Admissions by Judicial District

Region	JD	2016 Population Estimates ¹	ADP		New Admits		
			October 2015	YTD	October 2015	YTD	YTD New Admit Rate ²
<i>Central Region</i>							
	1st	55,832	26.9	23.5	51	195	34.9
	2nd	60,479	53.8	54.0	115	386	63.8
	5th	9,792	4.1	3.9	6	21	21.4
	18th	117,684	43.1	43.2	91	385	32.7
Central Total		243,787	127.9	124.6	263	987	40.5
<i>Northeast Region</i>							
	8th	31,855	16.8	16.0	32	153	48.0
	13th	8,467	1.5	3.0	8	27	31.9
	17th	69,058	25.7	25.7	47	179	25.9
	19th	35,275	16.5	19.4	48	167	47.3
	20th	32,027	7.9	5.7	37	97	30.3
Northeast Total		176,682	68.4	69.7	172	623	35.3
<i>Southern Region</i>							
	3rd	1,880	2.3	1.8	2	6	31.9
	4th	80,316	42.2	39.5	65	267	33.2
	10th	17,742	12.1	12.6	48	154	86.8
	11th	7,203	1.9	2.6	11	41	56.9
	12th	5,251	1.4	1.3	7	16	30.5
	15th	2,174	0.5	1.3	3	6	27.6
	16th	2,795	0.9	1.0	0	6	21.5
Southern Total		117,361	61.3	60.0	136	496	42.3
<i>Western Region</i>							
	6th	6,232	1.7	1.3	4	17	27.3
	7th	10,543	2.4	4.2	3	25	23.7
	9th	9,287	1.6	2.7	4	16	17.2
	14th	5,553	0.3	0.6	3	6	10.8
	21st	15,602	15.6	12.5	12	88	56.4
	22nd	3,036	2.1	1.8	2	9	29.6
Western Total		50,253	23.6	23.1	28	161	32.0
<i>Missing JD or Multiple JDs</i>			<i>0.2</i>	<i>1.1</i>			
Statewide Total		588,083	281.4	278.5	599	2,267	38.5

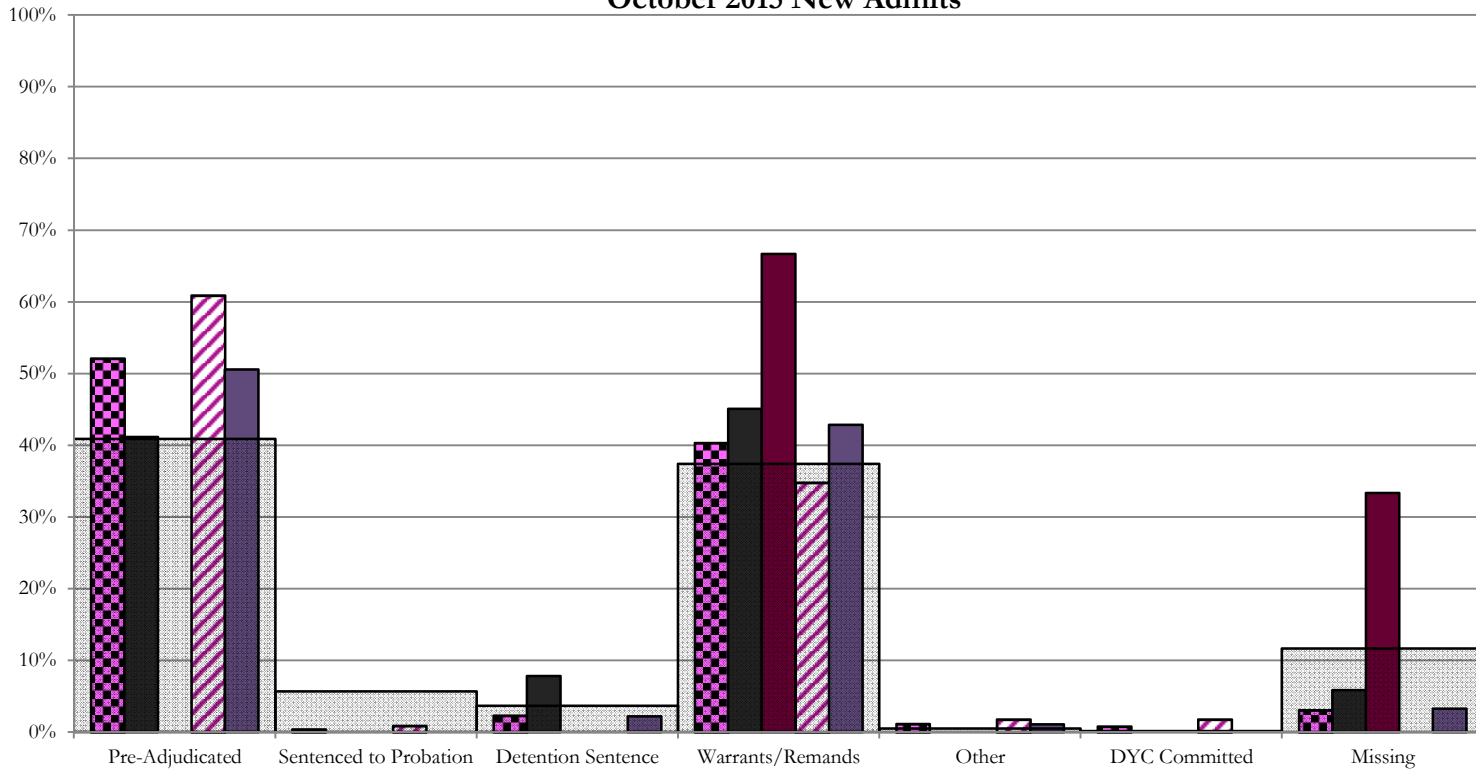
¹ Source: DOLA 2016 Estimates

² Per 10,000 youth in the population

October 2015 SB94 Supplemental Report

DYC Detention LOS by Judicial District				
Region	JD	YTD Detention Releases	YTD LOS (days)	LOS (days) Compared to State AVG
<i>Central Region</i>				
	1st	188	13.4	-1.6
	2nd	395	15.9	1.0
	5th	21	23.0	8.1
	18th	384	13.0	-1.9
Central Total		988	14.5	-0.5
<i>Northeast Region</i>				
	8th	159	12.1	-2.9
	13th	28	14.5	-0.4
	17th	183	13.2	-1.7
	19th	168	18.1	3.1
	20th	94	6.4	-8.6
Northeast Total		632	13.3	-1.7
<i>Southern Region</i>				
	3rd	5	40.7	25.7
	4th	259	18.7	3.7
	10th	158	9.9	-5.0
	11th	43	7.8	-7.2
	12th	14	10.9	-4.0
	15th	7	24.1	9.2
	16th	7	18.4	3.4
Southern Total		493	15.0	0.0
<i>Western Region</i>				
	6th	17	8.9	-6.0
	7th	25	19.5	4.6
	9th	13	23.0	8.1
	14th	5	21.7	6.8
	21st	76	13.9	-1.1
	22nd	8	22.0	7.1
Western Total		144	15.8	0.9
Statewide Total		2,255	14.9	-

Central Region SB94 Reason Detained by Judicial District October 2015 New Admits



■ CENTRAL REGION, 263 New Admits

■ 1st JD, 51 New Admits

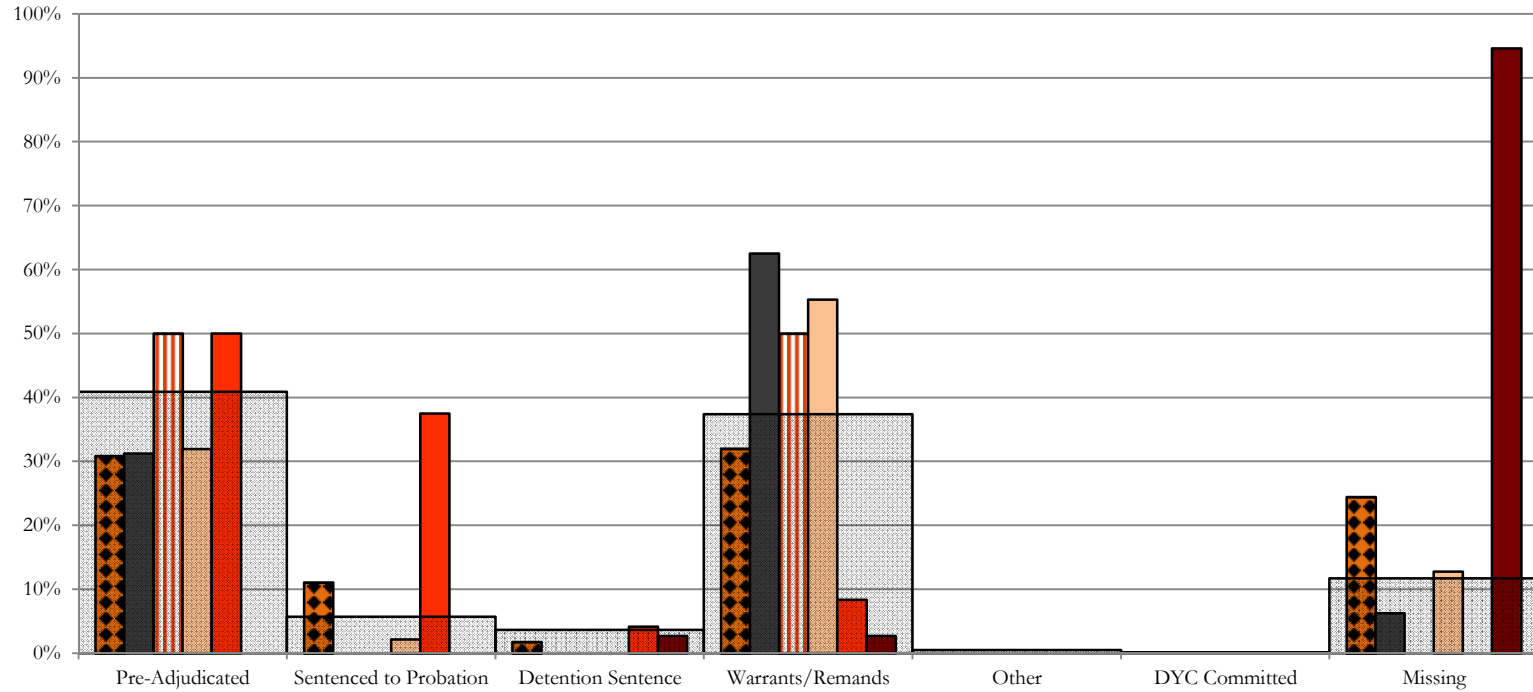
■ 5th JD, 6 New Admits

■ 2nd JD, 115 New Admits

■ 18th JD, 91 New Admits

■ STATEWIDE, 599 New Admits

Northeast Region SB94 Reason Detained by Judicial District October 2015 New Admits



■ NORTHEAST REGION, 172 New Admits

■ 8th JD, 32 New Admits

■ 13th JD, 8 New Admits

■ 17th JD, 47 New Admits

■ 19th JD, 48 New Admits

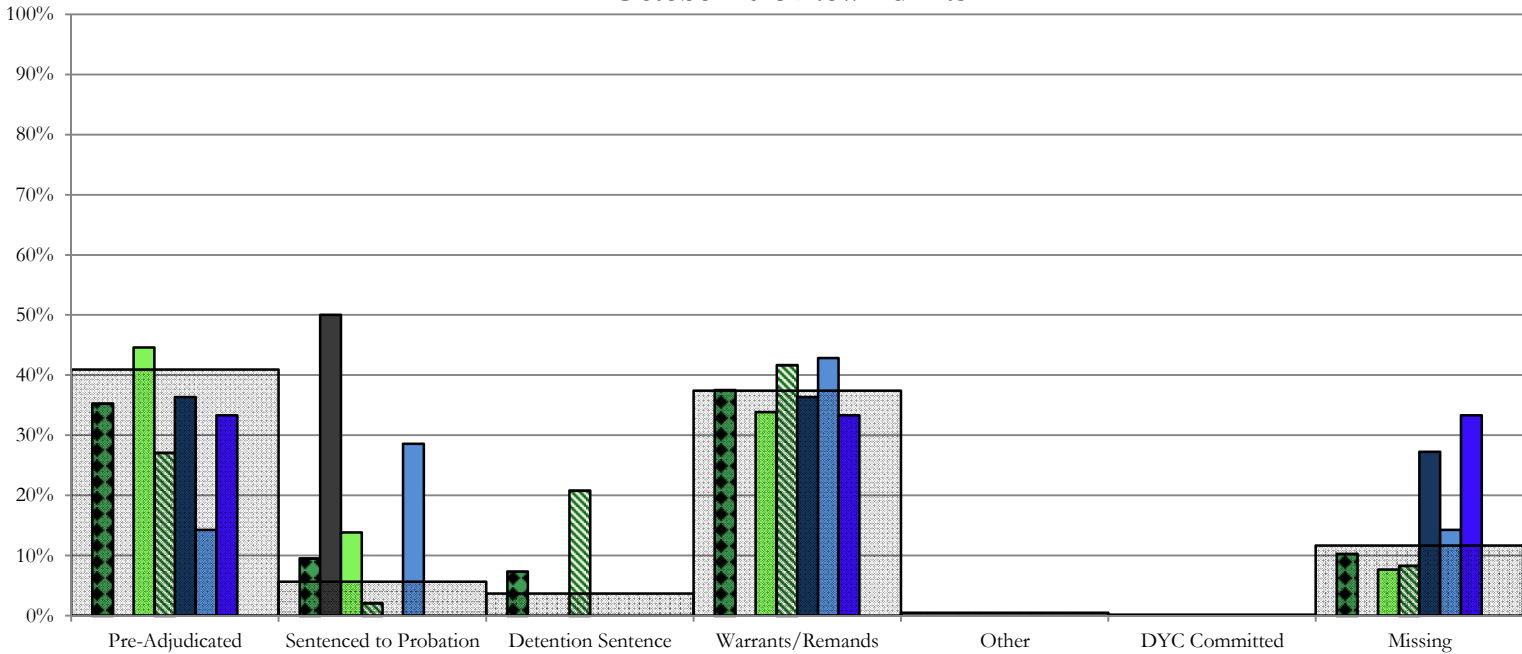
■ 20th JD, 37 New Admits

■ STATEWIDE, 599 New Admits

Southern Region

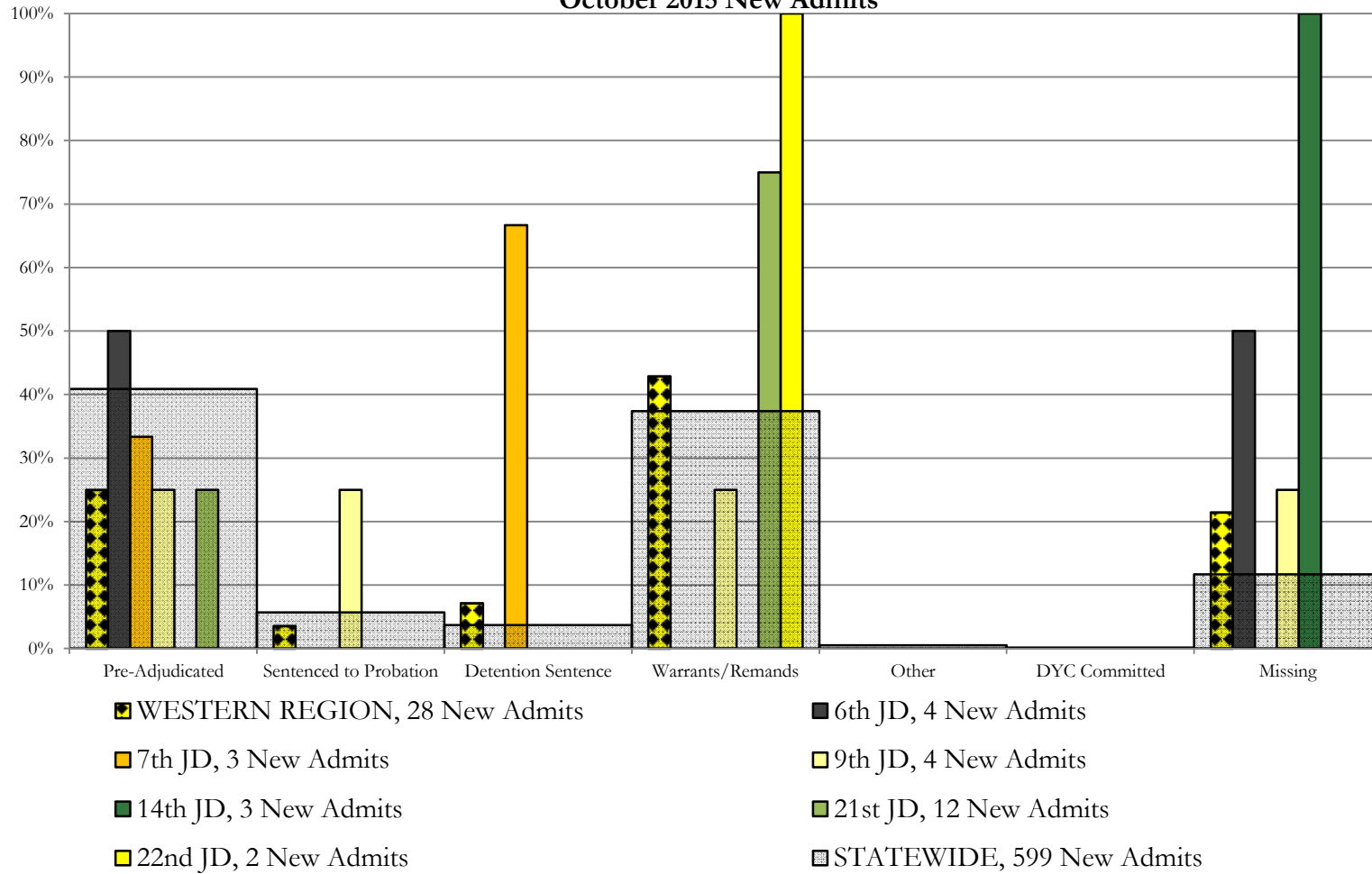
SB94 Reason Detained by Judicial District

October 2015 New Admits



- SOUTHERN REGION, 136 New Admits
- 4th JD, 65 New Admits
- 11th JD, 11 New Admits
- 15th JD, 3 New Admits
- STATEWIDE, 599 New Admits
- 3rd JD, 2 New Admits
- 10th JD, 48 New Admits
- 12th JD, 7 New Admits
- 16th JD, 0 New Admits

Western Region SB94 Reason Detained by Judicial District October 2015 New Admits



October 2015 SB94 Supplemental Report

DYC Detention Maximum Youth Served by Judicial District¹

Region	JD	Detention Capacity	Detention ADP		Maximum Youth Served on a Single Day ^{2,3}			
			October 2015	YTD	October 2015		YTD	
					Number of Youth	% of Detention Capacity	Number of Youth	% of Detention Capacity
<i>Central Region</i>								
	1st	37	26.9	23.5	36	97.3%	37	100.0%
	2nd	64	53.8	54.0	63	98.4%	65	101.6%
	5th	4	4.1	3.9	7	175.0%	7	175.0%
	18th	61	43.1	43.2	51	83.6%	55	90.2%
Central Region		166	127.9	124.6	142	85.5%	142	85.5%
<i>Northeast Region</i>								
	8th	21	16.8	16.0	21	100.0%	22	104.8%
	13th	5	1.5	3.0	6	120.0%	10	200.0%
	17th	30	25.7	25.7	30	100.0%	31	103.3%
	19th	25	16.5	19.4	30	120.0%	31	124.0%
	20th	13	7.9	5.7	13	100.0%	13	100.0%
Northeast Region		94	68.4	69.7	78	83.0%	95	101.1%
<i>Southern Region</i>								
	3rd	2	2.3	1.8	3	150.0%	3	150.0%
	4th	51	42.2	39.5	52	102.0%	53	103.9%
	10th	13	12.1	12.6	19	146.2%	21	161.5%
	11th	8	1.9	2.6	4	50.0%	7	87.5%
	12th	4	1.4	1.3	3	75.0%	4	100.0%
	15th	2	0.5	1.3	1	50.0%	2	100.0%
	16th	3	0.9	1.0	2	66.7%	2	66.7%
Southern Region		83	61.3	60.0	70	84.3%	75	90.4%
<i>Western Region</i>								
	6th	5	1.7	1.3	3	60.0%	3	60.0%
	7th	7	2.4	4.2	3	42.9%	8	114.3%
	9th	6	1.6	2.7	4	66.7%	7	116.7%
	14th	3	0.3	0.6	2	66.7%	2	66.7%
	21st	14	15.6	12.5	19	135.7%	19	135.7%
	22nd	4	2.1	1.8	3	75.0%	4	100.0%
Western Region		39	23.6	23.1	27	69.2%	30	76.9%
<i>Missing JD or Multiple JDs</i>			0.2	1.1				
Statewide		382	281.4	278.5	299	78.3%	305	79.8%

¹ Maximum youth served is the highest number of youth in detention on a single day during the month or fiscal year.

² Regional figures are not the sum of judicial districts, but represent the maximum count on one day for the entire region.

³ State figures are not the sum of regional figures, but represent the maximum count on one day for the entire state.

October 2015 SB94 Supplemental Report

SB94 Community ADP by Judicial District

Region	JD	Committed		ICJ		Municipal		Pre-Adjudicated		Sentenced		VCO		Total	
		October	YTD	October	YTD	October	YTD	October	YTD	October	YTD	October	YTD	October	YTD
<i>Central Region</i>															
	1st	0.3	0.1	0.0	0.0	0.1	0.0	216.3	194.5	19.2	17.5	0.0	0.0	235.9	212.2
	2nd	7.9	6.3	5.0	4.5	0.0	0.0	288.9	257.2	63.0	65.9	0.0	0.0	364.9	333.9
	5th	0.0	0.0	0.0	0.0	0.0	0.0	17.3	14.8	31.7	32.8	0.0	0.0	49.1	47.6
	18th	0.0	0.3	0.0	0.1	0.0	0.0	332.9	295.9	42.4	39.9	0.0	0.0	375.2	336.2
Central Total		8.2	6.7	5.0	4.6	0.1	0.0	855.4	762.4	156.3	156.1	0.0	0.0	1025.1	929.9
<i>Northeast Region</i>															
	8th	0.0	0.0	0.0	0.0	0.0	0.0	50.8	45.3	33.1	26.0	0.0	0.0	84.0	71.4
	13th	0.0	0.0	0.0	0.0	0.0	0.0	18.2	17.7	21.1	20.3	4.0	4.0	43.3	42.0
	17th	0.0	0.9	0.0	0.0	1.0	1.0	105.9	100.8	41.1	34.6	0.0	0.0	148.0	137.3
	19th	0.0	0.3	0.0	0.0	0.0	0.0	63.9	59.4	59.6	50.1	0.0	0.0	123.5	109.8
	20th	2.0	2.0	0.0	0.0	0.0	0.0	111.8	101.0	73.0	71.3	0.0	0.0	186.8	174.2
Northeast Total		2.0	3.1	0.0	0.0	1.0	1.0	350.8	324.2	227.9	202.3	4.0	4.0	585.7	534.7
<i>Southern Region</i>															
	3rd	0.0	0.1	0.0	0.0	0.0	0.0	6.0	5.1	5.0	4.9	2.0	1.9	13.0	12.0
	4th	2.0	1.3	0.0	0.0	2.0	2.0	169.7	152.4	116.1	107.4	2.0	1.8	291.8	265.0
	10th	1.0	0.6	0.0	0.0	47.3	38.4	24.9	20.4	17.3	17.4	11.6	9.2	102.1	86.1
	11th	0.0	0.0	0.0	0.0	1.0	0.7	15.0	14.3	26.0	24.9	0.0	0.0	42.0	39.9
	12th	0.0	0.0	0.0	0.0	0.0	0.0	9.3	9.0	7.0	6.1	0.0	0.0	16.3	15.1
	15th	0.0	0.0	0.0	0.0	0.0	0.0	3.6	2.6	6.9	4.8	0.0	0.0	10.6	7.4
	16th	0.0	0.0	0.0	0.0	0.0	0.0	3.0	3.2	14.0	14.5	4.0	4.0	21.0	21.7
Southern Total		3.0	2.1	0.0	0.0	50.3	41.2	231.5	207.0	192.3	180.1	19.6	16.9	496.8	447.2
<i>Western Region</i>															
	6th	0.0	0.0	0.0	0.0	0.0	0.0	11.8	11.5	0.0	0.0	1.0	1.0	12.8	12.5
	7th	0.0	0.0	0.0	0.0	0.4	0.3	12.8	14.6	11.6	13.2	0.6	0.1	25.4	28.2
	9th	0.0	0.0	0.0	0.0	0.0	0.0	9.4	9.2	4.9	4.0	0.0	0.0	14.3	13.1
	14th	0.0	0.0	0.0	0.0	0.0	0.0	4.1	5.8	0.8	1.2	0.0	0.0	4.8	7.1
	21st	0.0	0.0	0.0	0.0	0.0	0.0	43.1	46.0	10.8	11.4	0.0	0.0	53.9	57.4
	22nd	0.0	0.0	0.0	0.0	0.0	0.0	2.9	4.1	1.5	1.3	0.0	0.0	4.4	5.4
Western Total		0.0	0.0	0.0	0.0	0.4	0.3	84.1	91.1	29.7	31.2	1.6	1.1	115.7	123.7
Statewide Total		13.3	11.9	5.0	4.6	51.8	42.5	1521.7	1384.8	606.2	569.7	25.2	22.0	2223.2	2035.5