

# September 2015 FY 2015-2016 SB94 JDSAG SUPPLEMENTAL REPORT

---

Prepared by the Division of Youth Corrections (DYC)  
Research and Evaluation Unit  
October 28, 2015



**COLORADO**  
**Office of Children,  
Youth & Families**  
Division of Youth Corrections

# September 2015 SB94 Supplemental Report

## DYC Commitment ADP & New Commitments by Judicial District

Region	JD <sup>1</sup>	2016 Population Estimates <sup>2</sup>	ADP <sup>3</sup>		New Commitments		
			September 2015	YTD	September 2015	YTD	YTD Rate <sup>4</sup>
<i>Central Region</i>							
	1st	55,832	74.9	72.6	5	12	2.1
	2nd	60,479	139.2	138.7	5	12	2.0
	5th	9,792	10.9	11.0	0	0	0.0
	18th	117,684	82.0	81.4	5	10	0.8
<b>Central Total</b>		<b>243,787</b>	<b>307.0</b>	<b>303.8</b>	<b>15</b>	<b>34</b>	<b>1.4</b>
<i>Northeast Region</i>							
	8th	31,855	41.1	39.8	3	8	2.5
	13th	8,467	9.0	8.3	0	2	2.4
	17th	69,058	91.0	90.1	3	7	1.0
	19th	35,275	53.7	53.5	6	15	4.3
	20th	32,027	12.2	12.9	1	2	0.6
<b>Northeast Total</b>		<b>176,682</b>	<b>207.0</b>	<b>204.6</b>	<b>13</b>	<b>34</b>	<b>1.9</b>
<i>Southern Region</i>							
	3rd	1,880	3.0	2.5	0	0	0.0
	4th	80,316	97.7	97.8	3	10	1.2
	10th	17,742	38.0	37.0	3	9	5.1
	11th	7,203	6.0	6.0	0	1	1.4
	12th	5,251	4.5	4.9	0	1	1.9
	15th	2,174	2.0	1.8	0	1	4.6
	16th	2,795	1.4	1.5	1	1	3.6
<b>Southern Total</b>		<b>117,361</b>	<b>152.7</b>	<b>151.6</b>	<b>7</b>	<b>23</b>	<b>2.0</b>
<i>Western Region</i>							
	6th	6,232	13.5	14.1	0	0	0.0
	7th	10,543	8.0	8.6	1	1	0.9
	9th	9,287	4.6	6.0	0	1	1.1
	14th	5,553	3.0	3.0	0	0	0.0
	21st	15,602	26.4	27.5	5	6	3.8
	22nd	3,036	5.5	5.8	0	1	3.3
<b>Western Total</b>		<b>50,253</b>	<b>61.0</b>	<b>65.1</b>	<b>6</b>	<b>9</b>	<b>1.8</b>
<b>Statewide Total</b>		<b>588,083</b>	<b>727.6</b>	<b>725.0</b>	<b>41</b>	<b>100</b>	<b>1.7</b>

<sup>1</sup> JD represents the judicial district in which the client was committed. Regional totals are a sum of their respective judicial districts. Regional totals reported here may differ slightly from those reported in the Monthly Population Report, where region is defined by active caseloads.

<sup>2</sup> Source: DOLA 2016 Estimates

<sup>3</sup> Due to rounding, totals shown may not be an exact sum of the subtotals.

<sup>4</sup> Per 10,000 youth in the population

## September 2015 SB94 Supplemental Report

### DYC Detention ADP and New Detention Admissions by Judicial District

Region	JD	2016 Population Estimates <sup>1</sup>	ADP		New Admits		
			September 2015	YTD	September 2015	YTD	YTD New Admit Rate <sup>2</sup>
<i>Central Region</i>							
	1st	55,832	21.6	22.3	47	144	25.8
	2nd	60,479	47.5	54.0	93	271	44.8
	5th	9,792	4.9	3.9	4	15	15.3
	18th	117,684	48.1	43.2	103	294	25.0
<b>Central Total</b>		<b>243,787</b>	<b>122.2</b>	<b>123.5</b>	<b>247</b>	<b>724</b>	<b>29.7</b>
<i>Northeast Region</i>							
	8th	31,855	18.1	16.7	37	124	38.9
	13th	8,467	0.2	3.5	2	19	22.4
	17th	69,058	24.9	25.7	48	132	19.1
	19th	35,275	19.4	20.3	41	119	33.7
	20th	32,027	6.1	4.9	24	60	18.7
<b>Northeast Total</b>		<b>176,682</b>	<b>68.6</b>	<b>71.2</b>	<b>152</b>	<b>454</b>	<b>25.7</b>
<i>Southern Region</i>							
	3rd	1,880	1.3	1.6	1	4	21.3
	4th	80,316	40.3	38.4	67	201	25.0
	10th	17,742	10.9	12.7	32	106	59.7
	11th	7,203	1.3	2.8	8	30	41.6
	12th	5,251	1.1	1.3	5	9	17.1
	15th	2,174	1.0	1.5	0	3	13.8
	16th	2,795	1.9	1.1	2	6	21.5
<b>Southern Total</b>		<b>117,361</b>	<b>57.7</b>	<b>59.4</b>	<b>115</b>	<b>359</b>	<b>30.6</b>
<i>Western Region</i>							
	6th	6,232	1.5	1.2	7	13	20.9
	7th	10,543	6.3	5.0	8	22	20.9
	9th	9,287	1.0	3.1	2	12	12.9
	14th	5,553	0.0	0.7	0	3	5.4
	21st	15,602	12.2	11.2	31	76	48.7
	22nd	3,036	1.0	1.7	2	7	23.1
<b>Western Total</b>		<b>50,253</b>	<b>21.9</b>	<b>23.0</b>	<b>50</b>	<b>133</b>	<b>26.5</b>
<i>Missing JD or Multiple JDs</i>			<i>0.7</i>	<i>1.3</i>			
<b>Statewide Total</b>		<b>588,083</b>	<b>271.1</b>	<b>278.4</b>	<b>564</b>	<b>1,670</b>	<b>28.4</b>

<sup>1</sup> Source: DOLA 2016 Estimates

<sup>2</sup> Per 10,000 youth in the population

# September 2015 SB94 Supplemental Report

DYC Detention LOS by Judicial District				
Region	JD	YTD Detention Releases	YTD LOS (days)	LOS (days) Compared to State AVG
<i>Central Region</i>				
	1st	139	12.9	-2.2
	2nd	290	16.9	1.8
	5th	15	20.1	5.0
	18th	287	13.1	-2.0
<b>Central Total</b>		<b>731</b>	<b>14.7</b>	<b>-0.4</b>
<i>Northeast Region</i>				
	8th	128	11.2	-3.9
	13th	23	17.1	2.0
	17th	135	11.9	-3.2
	19th	126	19.5	4.4
	20th	58	6.8	-8.3
<b>Northeast Total</b>		<b>470</b>	<b>13.4</b>	<b>-1.7</b>
<i>Southern Region</i>				
	3rd	4	29.0	13.8
	4th	202	18.7	3.6
	10th	114	10.5	-4.6
	11th	32	8.8	-6.3
	12th	9	12.2	-2.9
	15th	5	33.3	18.2
	16th	5	10.8	-4.3
<b>Southern Total</b>		<b>371</b>	<b>15.4</b>	<b>0.3</b>
<i>Western Region</i>				
	6th	11	8.7	-6.4
	7th	22	13.7	-1.4
	9th	12	24.4	9.3
	14th	4	26.2	11.1
	21st	62	12.6	-2.5
	22nd	6	23.1	7.9
<b>Western Total</b>		<b>117</b>	<b>14.6</b>	<b>-0.5</b>
<b>Statewide Total</b>		<b>1,685</b>	<b>15.1</b>	<b>-</b>

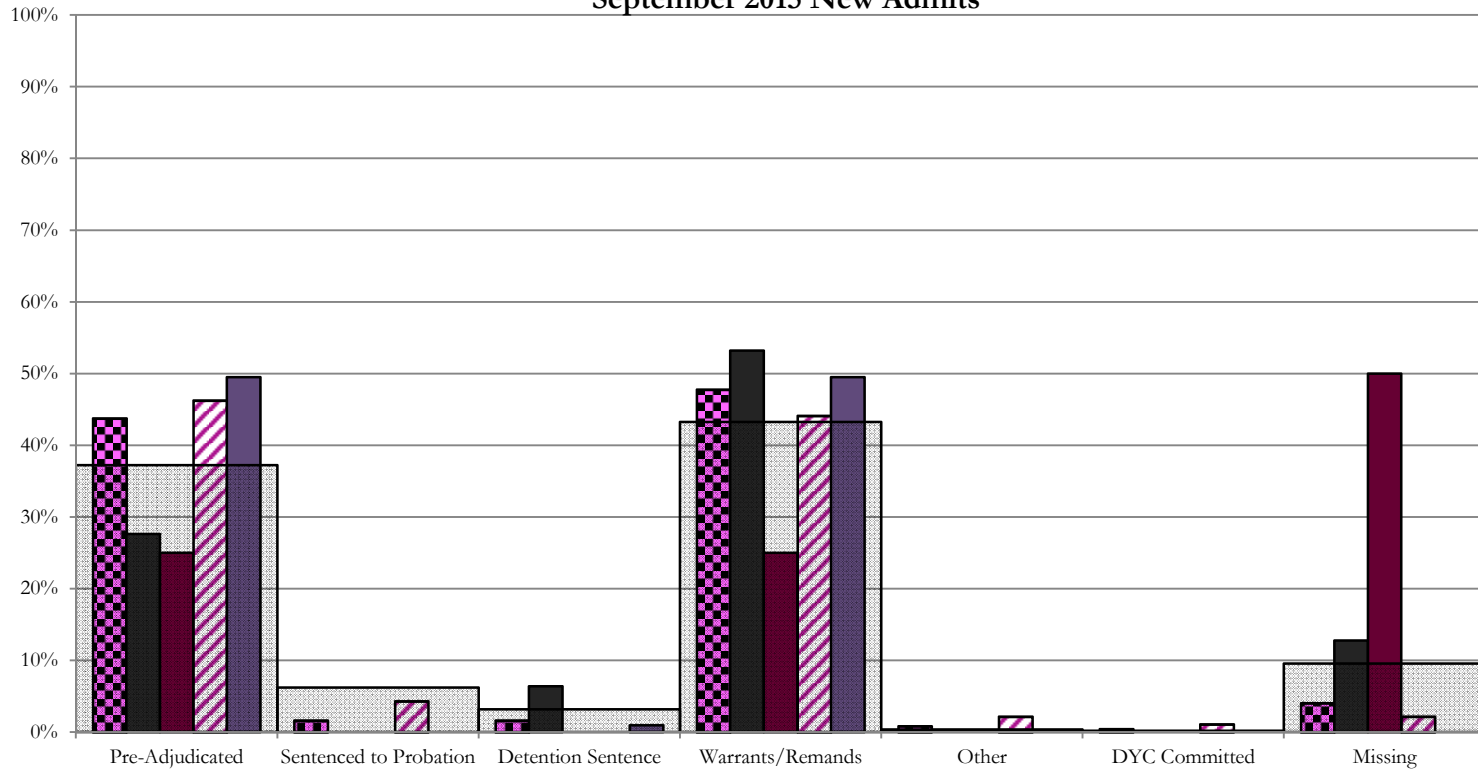
## September 2015 SB94 JDSAG Supplemental Report

### SB94 Reason Detained (RD) by Judicial District

Region	JD	Pre-Adjudicated				Sentenced to Probation				Detention Sentence								Warrants/Remands				Other						DYC Committed		Missing							
		Felony		Misdemeanor		Technical Violator		New Charges		Probation Sentence		Detention Sentence		Valid Court Order (VCO) Truancy		Awaiting DSS (Social Services) Placement		Failure to Appear (FTA)		Failure to Comply (FTC)		Interstate Compact on Juveniles (ICJ) Hold		Immigration Hold		No Bond Hold		Out-of-Country Warrant		Institutional		Parole		Missing			
Monthly New Admits	#	%	#	%	#	%	#	%	#	%	#	%	#	%	#	%	#	%	#	%	#	%	#	%	#	%	#	%	#	%	#	%	#	%			
<b>Central Region</b>																																					
1st	47	6	12.8%	7	14.9%	0	0.0%	0	0.0%	0	0.0%	3	6.4%	0	0.0%	0	0.0%	0	0.0%	6	12.8%	19	40.4%	0	0.0%	0	0.0%	0	0.0%	0	0.0%	0	0.0%	0	0.0%	6	12.8%
2nd	93	33	35.5%	10	10.8%	4	4.3%	0	0.0%	0	0.0%	0	0.0%	0	0.0%	0	0.0%	12	12.9%	29	31.2%	2	2.2%	0	0.0%	0	0.0%	0	0.0%	1	1.1%	0	0.0%	2	2.2%		
5th	4	1	25.0%	0	0.0%	0	0.0%	0	0.0%	0	0.0%	0	0.0%	0	0.0%	0	0.0%	0	0.0%	1	25.0%	0	0.0%	0	0.0%	0	0.0%	0	0.0%	0	0.0%	0	0.0%	2	50.0%		
18th	103	32	31.1%	19	18.4%	0	0.0%	0	0.0%	0	0.0%	1	1.0%	0	0.0%	0	0.0%	11	10.7%	40	38.8%	0	0.0%	0	0.0%	0	0.0%	0	0.0%	0	0.0%	0	0.0%	0	0.0%		
<b>Central Total</b>	<b>247</b>	<b>72</b>	<b>29%</b>	<b>36</b>	<b>15%</b>	<b>4</b>	<b>1.6%</b>	<b>0</b>	<b>0.0%</b>	<b>0</b>	<b>0.0%</b>	<b>4</b>	<b>1.6%</b>	<b>0</b>	<b>0.0%</b>	<b>0</b>	<b>0.0%</b>	<b>29</b>	<b>12%</b>	<b>89</b>	<b>36%</b>	<b>2</b>	<b>0.8%</b>	<b>0</b>	<b>0.0%</b>	<b>0</b>	<b>0.0%</b>	<b>0</b>	<b>0.0%</b>	<b>0</b>	<b>0.0%</b>	<b>1</b>	<b>0.4%</b>	<b>0</b>	<b>0.0%</b>	<b>10</b>	<b>4.0%</b>
<b>Northeast Region</b>																																					
8th	37	6	16.2%	9	24.3%	0	0.0%	0	0.0%	0	0.0%	0	0.0%	0	0.0%	0	0.0%	2	5.4%	15	40.5%	0	0.0%	0	0.0%	0	0.0%	0	0.0%	0	0.0%	0	0.0%	0	0.0%	5	13.5%
13th	2	1	50.0%	0	0.0%	0	0.0%	0	0.0%	0	0.0%	0	0.0%	0	0.0%	0	0.0%	0	0.0%	1	50.0%	0	0.0%	0	0.0%	0	0.0%	0	0.0%	0	0.0%	0	0.0%	0	0.0%	0	0.0%
17th	48	11	22.9%	4	8.3%	0	0.0%	0	0.0%	0	0.0%	0	0.0%	0	0.0%	0	0.0%	8	16.7%	20	41.7%	0	0.0%	0	0.0%	0	0.0%	0	0.0%	0	0.0%	0	0.0%	0	0.0%	6	12.5%
19th	41	8	19.5%	6	14.6%	16	39.0%	0	0.0%	0	0.0%	1	2.4%	2	4.9%	0	0.0%	2	4.9%	6	14.6%	0	0.0%	0	0.0%	0	0.0%	0	0.0%	0	0.0%	0	0.0%	0	0.0%	0	0.0%
20th	24	4	16.7%	1	4.2%	0	0.0%	0	0.0%	0	0.0%	2	8.3%	0	0.0%	0	0.0%	2	8.3%	0	0.0%	0	0.0%	0	0.0%	0	0.0%	0	0.0%	0	0.0%	0	0.0%	0	0.0%	15	62.5%
<b>Northeast Total</b>	<b>152</b>	<b>30</b>	<b>20%</b>	<b>20</b>	<b>13%</b>	<b>16</b>	<b>10.5%</b>	<b>0</b>	<b>0.0%</b>	<b>0</b>	<b>0.0%</b>	<b>3</b>	<b>2.0%</b>	<b>2</b>	<b>1.3%</b>	<b>0</b>	<b>0.0%</b>	<b>14</b>	<b>9.2%</b>	<b>42</b>	<b>28%</b>	<b>0</b>	<b>0.0%</b>	<b>0</b>	<b>0.0%</b>	<b>0</b>	<b>0.0%</b>	<b>0</b>	<b>0.0%</b>	<b>0</b>	<b>0.0%</b>	<b>0</b>	<b>0.0%</b>	<b>0</b>	<b>0.0%</b>	<b>25</b>	<b>16%</b>
<b>Southern Region</b>																																					
3rd	1	1	100.0%	0	0.0%	0	0.0%	0	0.0%	0	0.0%	0	0.0%	0	0.0%	0	0.0%	0	0.0%	0	0.0%	0	0.0%	0	0.0%	0	0.0%	0	0.0%	0	0.0%	0	0.0%	0	0.0%	0	0.0%
4th	67	20	29.9%	6	9.0%	8	11.9%	5	7.5%	0	0.0%	0	0.0%	0	0.0%	0	0.0%	8	11.9%	18	26.9%	0	0.0%	0	0.0%	0	0.0%	0	0.0%	0	0.0%	0	0.0%	0	0.0%	2	3.0%
10th	32	4	12.5%	1	3.1%	0	0.0%	0	0.0%	0	0.0%	5	15.6%	0	0.0%	0	0.0%	7	21.9%	11	34.4%	0	0.0%	0	0.0%	0	0.0%	0	0.0%	0	0.0%	0	0.0%	0	0.0%	4	12.5%
11th	8	3	37.5%	1	12.5%	0	0.0%	0	0.0%	0	0.0%	0	0.0%	1	12.5%	0	0.0%	0	0.0%	3	37.5%	0	0.0%	0	0.0%	0	0.0%	0	0.0%	0	0.0%	0	0.0%	0	0.0%	0	0.0%
12th	5	1	20.0%	0	0.0%	0	0.0%	0	0.0%	0	0.0%	0	0.0%	0	0.0%	0	0.0%	0	0%	1	20.0%	0	0.0%	0	0.0%	0	0.0%	0	0.0%	0	0.0%	0	0.0%	3	60.0%		
15th	0	0	0.0%	0	0.0%	0	0.0%	0	0.0%	0	0.0%	0	0.0%	0	0.0%	0	0.0%	0	0.0%	0	0%	0	0.0%	0	0.0%	0	0.0%	0	0.0%	0	0.0%	0	0.0%	0	0.0%		
16th	2	0	0.0%	0	0.0%	0	0.0%	0	0.0%	0	0.0%	0	0.0%	0	0.0%	0	0.0%	0	0.0%	2	0%	0	0.0%	0	0.0%	0	0.0%	0	0.0%	0	0.0%	0	0.0%	0	0.0%		
<b>Southern Total</b>	<b>115</b>	<b>29</b>	<b>25%</b>	<b>8</b>	<b>7%</b>	<b>8</b>	<b>7.0%</b>	<b>5</b>	<b>4.3%</b>	<b>0</b>	<b>0.0%</b>	<b>5</b>	<b>4.3%</b>	<b>1</b>	<b>0.9%</b>	<b>0</b>	<b>0.0%</b>	<b>15</b>	<b>13%</b>	<b>35</b>	<b>30%</b>	<b>0</b>	<b>0.0%</b>	<b>0</b>	<b>0.0%</b>	<b>0</b>	<b>0.0%</b>	<b>0</b>	<b>0.0%</b>	<b>0</b>	<b>0.0%</b>	<b>0</b>	<b>0.0%</b>	<b>0</b>	<b>0.0%</b>	<b>9</b>	<b>8%</b>
<b>Western Region</b>																																					
6th	7	1	14.3%	0	0.0%	1	14.3%	0	0.0%	0	0.0%	0	0.0%	0	0.0%	0	0.0%	0	0.0%	0	0.0%	0	0.0%	0	0.0%	0	0.0%	0	0.0%	0	0.0%	0	0.0%	5	71%		
7th	8	4	50.0%	1	12.5%	0	0.0%	0	0.0%	0	0.0%	2	25.0%	0	0.0%	0	0.0%	0	0.0%	1	12.5%	0	0.0%	0	0.0%	0	0.0%	0	0.0%	0	0.0%	0	0.0%	0	0.0%	0	0.0%
9th	2	0	0.0%	0	0.0%	0	0.0%	0	0.0%	0	0.0%	1	50.0%	0	0.0%	0	0.0%	0	0.0%	0	0.0%	0	0.0%	0	0.0%	0	0.0%	0	0.0%	0	0.0%	0	0.0%	1	50.0%		
14th	0	0	0.0%	0	0.0%	0	0.0%	0	0.0%	0	0.0%	0	0.0%	0	0.0%	0	0.0%	0	0.0%	0	0.0%	0	0.0%	0	0.0%	0	0.0%	0	0.0%	0	0.0%	0	0.0%	0	0.0%		
21st	31	5	16.1%	4	12.9%	1	3.2%	0	0.0%	0	0.0%	0	0.0%	0	0.0%	0	0.0%	3	9.7%	14	45.2%	0	0.0%	0	0.0%	0	0.0%	0	0.0%	0	0.0%	0	0.0%	4	12.9%		
22nd	2	0	0.0%	0	0.0%	0	0.0%	0	0.0%	0	0.0%	0	0.0%	0	0.0%	0	0.0%	0	0.0%	2	100%	0	0.0%	0	0.0%	0	0.0%	0	0.0%	0	0.0%	0	0.0%	0	0.0%		
<b>Western Total</b>	<b>50</b>	<b>10</b>	<b>20%</b>	<b>5</b>	<b>10.0%</b>	<b>2</b>	<b>4.0%</b>	<b>0</b>	<b>0.0%</b>	<b>0</b>	<b>0.0%</b>	<b>3</b>	<b>6.0%</b>	<b>0</b>	<b>0.0%</b>	<b>0</b>	<b>0.0%</b>	<b>3</b>	<b>6.0%</b>	<b>17</b>	<b>34%</b>	<b>0</b>	<b>0.0%</b>	<b>0</b>	<b>0.0%</b>	<b>0</b>	<b>0.0%</b>	<b>0</b>	<b>0.0%</b>	<b>0</b>	<b>0.0%</b>	<b>0</b>	<b>0.0%</b>	<b>10</b>	<b>20%</b>		
<b>Individual RD Totals</b>	<b>564</b>	<b>141</b>	<b>25%</b>	<b>69</b>	<b>12%</b>	<b>30</b>	<b>5.3%</b>	<b>5</b>	<b>0.9%</b>	<b>0</b>	<b>0.0%</b>	<b>15</b>	<b>2.7%</b>	<b>3</b>	<b>0.5%</b>	<b>0</b>	<b>0.0%</b>	<b>61</b>	<b>11%</b>	<b>183</b>	<b>32%</b>	<b>2</b>	<b>0.4%</b>	<b>0</b>	<b>0.0%</b>	<b>0</b>	<b>0.0%</b>	<b>0</b>	<b>0.0%</b>	<b>0</b>	<b>0.0%</b>	<b>1</b>	<b>0.2%</b>	<b>0</b>	<b>0.0%</b>	<b>54</b>	<b>10%</b>
<b>Statewide Totals</b>	<b>564</b>	<b>210</b>	<b>37.2%</b>	<b>108</b>	<b>19.1%</b>	<b>35</b>	<b>6.2%</b>	<b>10</b>	<b>1.8%</b>	<b>0</b>	<b>0.0%</b>	<b>18</b>	<b>3.2%</b>	<b>4</b>	<b>0.7%</b>	<b>0</b>	<b>0.0%</b>	<b>244</b>	<b>43.3%</b>	<b>89</b>	<b>15.8%</b>	<b>2</b>	<b>0.4%</b>	<b>0</b>	<b>0.0%</b>	<b>0</b>	<b>0.0%</b>	<b>0</b>	<b>0.0%</b>	<b>1</b>	<b>0.2%</b>	<b>0</b>	<b>0.0%</b>	<b>54</b>	<b>10%</b>		

# Central Region

## SB94 Reason Detained by Judicial District September 2015 New Admits



■ CENTRAL REGION, 247 New Admits

■ 5th JD, 4 New Admits

■ 18th JD, 103 New Admits

■ 1st JD, 47 New Admits

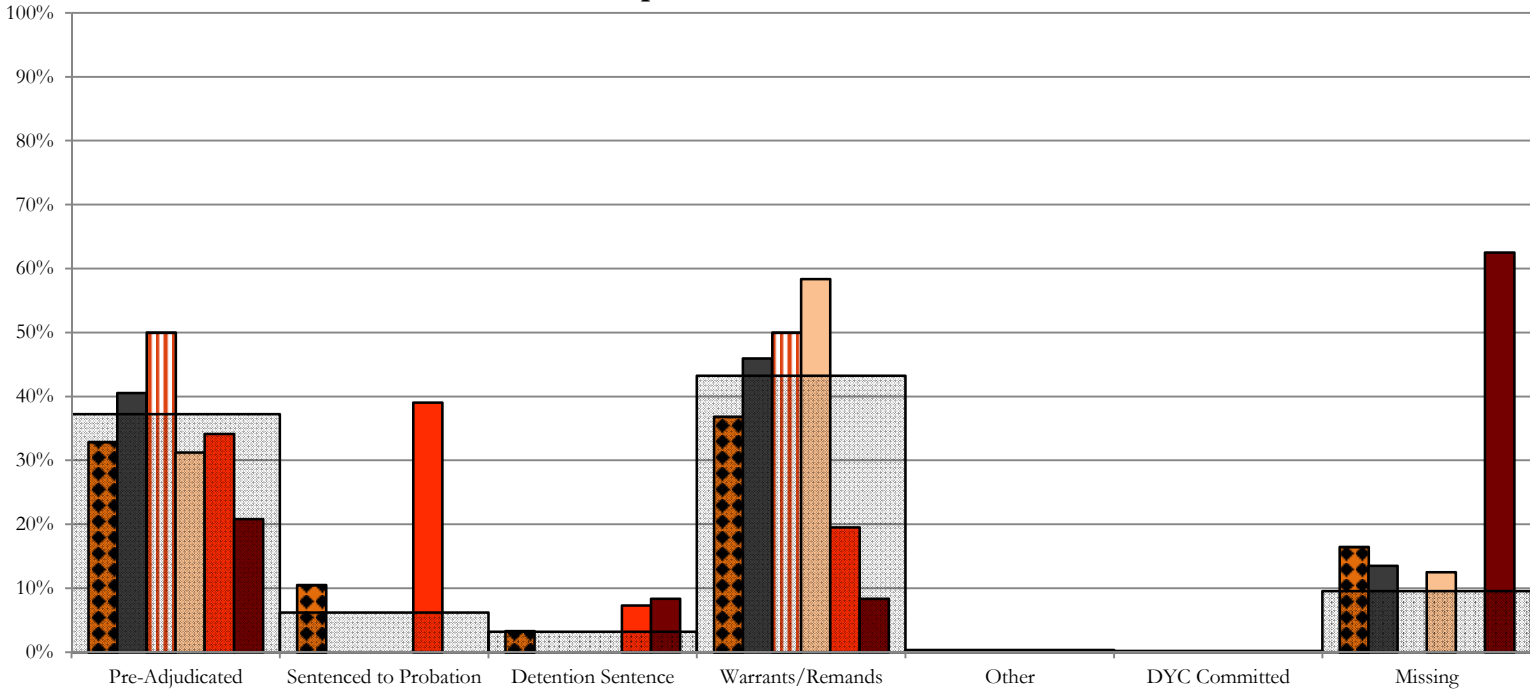
■ 2nd JD, 93 New Admits

■ STATEWIDE, 564 New Admits

# Northeast Region

## SB94 Reason Detained by Judicial District

### September 2015 New Admits

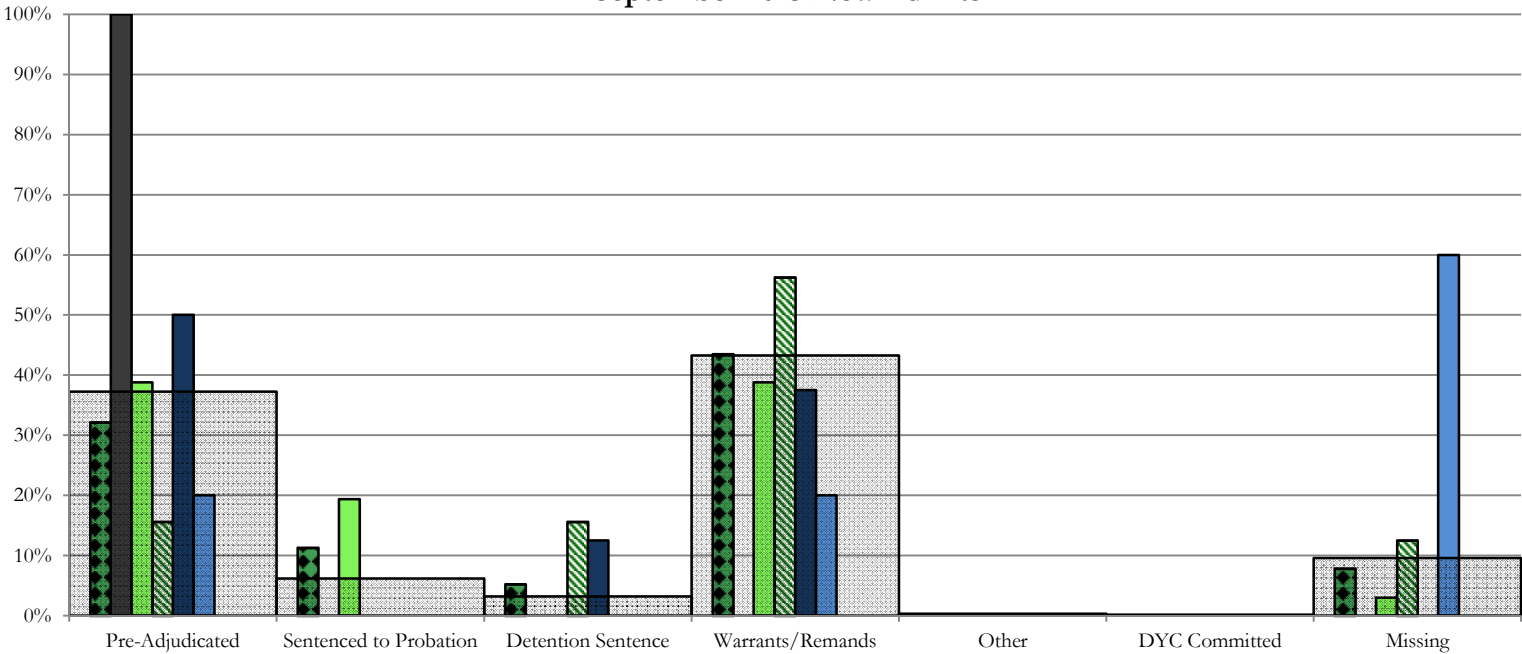


- NORTHEAST REGION, 152 New Admits
- 8th JD, 37 New Admits
- 13th JD, 2 New Admits
- 17th JD, 48 New Admits
- 19th JD, 41 New Admits
- 20th JD, 24 New Admits
- STATEWIDE, 564 New Admits

# Southern Region

## SB94 Reason Detained by Judicial District

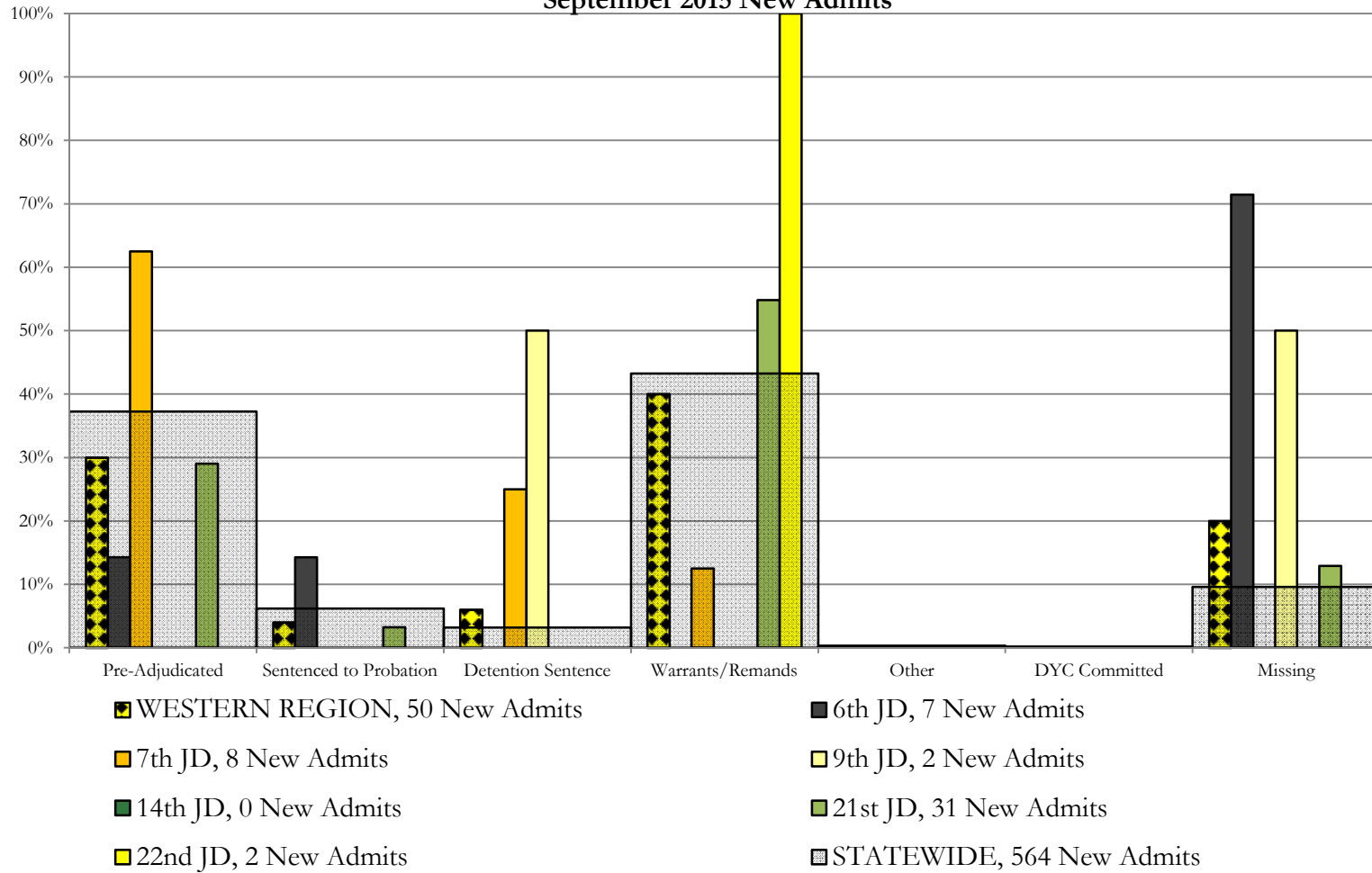
### September 2015 New Admits



- SOUTHERN REGION, 115 New Admits
- 4th JD, 67 New Admits
- 11th JD, 8 New Admits
- 15th JD, 0 New Admits
- STATEWIDE, 564 New Admits
- 3rd JD, 1 New Admits
- 10th JD, 32 New Admits
- 12th JD, 5 New Admits
- 16th JD, 2 New Admits



## Western Region SB94 Reason Detained by Judicial District September 2015 New Admits



## September 2015 SB94 Supplemental Report

### DYC Detention Maximum Youth Served by Judicial District<sup>1</sup>

Region	JD	Detention Capacity	Detention ADP		Maximum Youth Served on a Single Day <sup>2,3</sup>			
			September 2015	YTD	September 2015		YTD	
					Number of Youth	% of Detention Capacity	Number of Youth	% of Detention Capacity
<i>Central Region</i>								
	1st	37	21.6	22.3	27	73.0%	30	81.1%
	2nd	64	47.5	54.0	56	87.5%	65	101.6%
	5th	4	4.9	3.9	6	150.0%	6	150.0%
	18th	61	48.1	43.2	55	90.2%	55	90.2%
<b>Central Region</b>		<b>166</b>	<b>122.2</b>	<b>123.5</b>	<b>131</b>	<b>78.9%</b>	<b>137</b>	<b>82.5%</b>
<i>Northeast Region</i>								
	8th	21	18.1	16.7	24	114.3%	24	114.3%
	13th	5	0.2	3.5	1	20.0%	10	200.0%
	17th	30	24.9	25.7	30	100.0%	31	103.3%
	19th	25	19.4	20.3	24	96.0%	31	124.0%
	20th	13	6.1	4.9	10	76.9%	10	76.9%
<b>Northeast Region</b>		<b>94</b>	<b>68.6</b>	<b>71.2</b>	<b>77</b>	<b>81.9%</b>	<b>95</b>	<b>101.1%</b>
<i>Southern Region</i>								
	3rd	2	1.3	1.6	2	100.0%	3	150.0%
	4th	51	40.3	38.4	51	100.0%	52	102.0%
	10th	13	10.9	12.7	16	123.1%	21	161.5%
	11th	8	1.3	2.8	2	25.0%	7	87.5%
	12th	4	1.1	1.3	3	75.0%	4	100.0%
	15th	2	1.0	1.5	2	100.0%	2	100.0%
	16th	3	1.9	1.1	2	66.7%	2	66.7%
<b>Southern Region</b>		<b>83</b>	<b>57.7</b>	<b>59.4</b>	<b>73</b>	<b>88.0%</b>	<b>75</b>	<b>90.4%</b>
<i>Western Region</i>								
	6th	5	1.5	1.2	3	60.0%	3	60.0%
	7th	7	6.3	5.0	8	114.3%	8	114.3%
	9th	6	1.0	3.1	2	33.3%	7	116.7%
	14th	3	0.0	0.7	0	0.0%	2	66.7%
	21st	14	12.2	11.2	18	128.6%	18	128.6%
	22nd	4	1.0	1.7	2	50.0%	4	100.0%
<b>Western Region</b>		<b>39</b>	<b>21.9</b>	<b>23.0</b>	<b>27</b>	<b>69.2%</b>	<b>31</b>	<b>79.5%</b>
<i>Missing JD or Multiple JDs</i>			0.7	1.3				
<b>Statewide</b>		<b>382</b>	<b>271.1</b>	<b>278.4</b>	<b>289</b>	<b>75.7%</b>	<b>306</b>	<b>80.1%</b>

<sup>1</sup> Maximum youth served is the highest number of youth in detention on a single day during the month or fiscal year.

<sup>2</sup> Regional figures are not the sum of judicial districts, but represent the maximum count on one day for the entire region.

<sup>3</sup> State figures are not the sum of regional figures, but represent the maximum count on one day for the entire state.

## September 2015 SB94 Supplemental Report

### SB94 Community ADP by Judicial District

Region	JD	Committed		ICJ		Municipal		Pre-Adjudicated		Sentenced		VCO		Total	
		September	YTD	September	YTD	September	YTD	September	YTD	September	YTD	September	YTD	September	YTD
<i>Central Region</i>															
	1st	0.0	0.0	0.0	0.0	0.1	0.0	194.2	185.2	19.0	15.9	0.0	0.0	213.3	201.1
	2nd	7.6	7.8	4.9	4.3	0.0	0.0	247.7	246.8	65.3	67.3	0.0	0.0	325.5	326.2
	5th	0.0	0.0	0.0	0.0	0.0	0.0	16.9	14.5	31.0	31.0	0.0	0.0	47.9	45.5
	18th	0.0	0.4	0.0	0.1	0.0	0.0	306.9	283.7	45.2	39.4	0.0	0.0	352.1	323.7
<b>Central Total</b>		<b>7.6</b>	<b>8.2</b>	<b>4.9</b>	<b>4.4</b>	<b>0.1</b>	<b>0.0</b>	<b>765.7</b>	<b>730.2</b>	<b>160.4</b>	<b>153.6</b>	<b>0.0</b>	<b>0.0</b>	<b>938.8</b>	<b>896.5</b>
<i>Northeast Region</i>															
	8th	0.0	0.0	0.0	0.0	0.0	0.0	42.2	42.6	21.0	19.1	0.0	0.0	63.2	61.6
	13th	0.0	0.0	0.0	0.0	0.0	0.0	19.8	18.8	24.2	22.5	4.0	4.0	48.0	45.3
	17th	0.0	0.3	0.0	0.0	1.0	1.0	115.4	113.8	30.9	30.6	0.0	0.0	147.3	145.7
	19th	0.1	0.3	0.0	0.0	0.0	0.0	60.5	57.9	57.6	48.3	0.0	0.0	118.2	106.5
	20th	2.0	2.0	0.0	0.0	0.0	0.0	102.9	97.3	70.9	69.7	0.0	0.0	175.9	169.0
<b>Northeast Total</b>		<b>2.1</b>	<b>2.6</b>	<b>0.0</b>	<b>0.0</b>	<b>1.0</b>	<b>1.0</b>	<b>340.8</b>	<b>330.4</b>	<b>204.7</b>	<b>190.1</b>	<b>4.0</b>	<b>4.0</b>	<b>552.5</b>	<b>528.1</b>
<i>Southern Region</i>															
	3rd	0.0	0.1	0.0	0.0	0.0	0.0	6.1	4.7	5.0	4.8	2.0	1.9	13.1	11.6
	4th	3.3	2.3	0.0	0.0	2.0	2.0	178.8	160.8	130.4	115.4	2.0	1.7	316.5	282.2
	10th	1.0	0.5	0.0	0.0	40.4	35.7	19.7	19.0	17.4	18.5	8.6	8.4	87.0	82.0
	11th	0.0	0.0	0.0	0.0	1.0	0.6	15.0	15.1	27.7	25.9	0.0	0.0	43.6	41.7
	12th	0.0	0.0	0.0	0.0	0.0	0.0	10.2	9.2	6.3	5.7	0.0	0.0	16.5	14.9
	15th	0.0	0.0	0.0	0.0	0.0	0.0	2.0	2.3	5.2	3.9	0.0	0.0	7.2	6.2
	16th	0.0	0.0	0.0	0.0	0.0	0.0	4.9	4.3	14.0	14.6	4.0	4.0	22.9	22.9
<b>Southern Total</b>		<b>4.3</b>	<b>3.0</b>	<b>0.0</b>	<b>0.0</b>	<b>43.4</b>	<b>38.3</b>	<b>236.6</b>	<b>215.4</b>	<b>206.0</b>	<b>188.9</b>	<b>16.6</b>	<b>16.0</b>	<b>506.9</b>	<b>461.5</b>
<i>Western Region</i>															
	6th	0.0	0.0	0.0	0.0	0.0	0.0	12.0	11.3	0.0	0.0	1.0	1.0	13.0	12.3
	7th	0.0	0.0	0.0	0.0	0.7	0.3	18.2	15.3	12.4	13.4	0.0	0.0	31.4	29.0
	9th	0.0	0.0	0.0	0.0	0.0	0.0	11.9	11.8	3.5	3.4	0.0	0.0	15.3	15.2
	14th	0.0	0.0	0.0	0.0	0.0	0.0	11.4	13.3	6.0	6.1	0.0	0.0	17.4	19.3
	21st	0.0	0.0	0.0	0.0	0.0	0.0	46.8	47.3	9.2	11.5	0.0	0.0	56.0	58.8
	22nd	0.0	0.0	1.0	0.7	0.0	0.0	3.2	4.8	0.9	1.2	0.0	0.0	5.2	6.6
<b>Western Total</b>		<b>0.0</b>	<b>0.0</b>	<b>1.0</b>	<b>0.7</b>	<b>0.7</b>	<b>0.3</b>	<b>103.6</b>	<b>103.8</b>	<b>32.0</b>	<b>35.5</b>	<b>1.0</b>	<b>1.0</b>	<b>138.3</b>	<b>141.2</b>
<b>Statewide Total</b>		<b>14.0</b>	<b>13.8</b>	<b>5.9</b>	<b>5.1</b>	<b>45.1</b>	<b>39.6</b>	<b>1446.7</b>	<b>1379.8</b>	<b>603.1</b>	<b>568.1</b>	<b>21.6</b>	<b>21.0</b>	<b>2136.4</b>	<b>2027.4</b>