

August 2015 FY 2015-2016 SB94 JDSAG SUPPLEMENTAL REPORT

Prepared by the Division of Youth Corrections (DYC)
Research and Evaluation Unit
September 24, 2015



COLORADO

**Office of Children,
Youth & Families**

Division of Youth Corrections

August 2015 SB94 Supplemental Report

DYC Commitment ADP & New Commitments by Judicial District

Region	JD ¹	2016 Population Estimates ²	ADP ³		New Commitments		
			August 2015	YTD	August 2015	YTD	YTD Rate ⁴
<i>Central Region</i>							
	1st	55,832	71.7	71.5	2	7	1.3
	2nd	60,479	137.6	138.5	1	7	1.2
	5th	9,792	11.0	11.0	0	0	0.0
	18th	117,684	76.8	80.2	2	5	0.4
Central Total		243,787	297.0	301.2	5	19	0.8
<i>Northeast Region</i>							
	8th	31,855	38.9	39.2	3	5	1.6
	13th	8,467	8.2	8.0	2	2	2.4
	17th	69,058	90.8	89.7	2	4	0.6
	19th	35,275	54.7	53.4	4	9	2.6
	20th	32,027	13.9	13.3	0	1	0.3
Northeast Total		176,682	206.4	203.6	11	21	1.2
<i>Southern Region</i>							
	3rd	1,880	2.0	2.3	0	0	0.0
	4th	80,316	98.2	97.8	3	7	0.9
	10th	17,742	36.5	36.5	4	5	2.8
	11th	7,203	5.9	6.0	1	1	1.4
	12th	5,251	5.3	5.1	0	1	1.9
	15th	2,174	2.0	1.6	0	1	4.6
	16th	2,795	1.6	1.6	0	0	0.0
Southern Total		117,361	151.5	150.9	8	15	1.3
<i>Western Region</i>							
	6th	6,232	13.8	14.2	0	0	0.0
	7th	10,543	8.2	8.9	0	0	0.0
	9th	9,287	5.6	6.5	0	1	1.1
	14th	5,553	3.0	3.0	0	0	0.0
	21st	15,602	25.1	28.1	1	1	0.6
	22nd	3,036	6.0	6.0	0	0	0.0
Western Total		50,253	61.7	66.6	1	2	0.4
Statewide Total		588,083	716.6	722.4	25	57	1.0

¹ JD represents the judicial district in which the client was committed. Regional totals are a sum of their respective judicial districts. Regional totals reported here may differ slightly from those reported in the Monthly Population Report, where region is defined by active caseloads.

² Source: DOLA 2016 Estimates

³ Due to rounding, totals shown may not be an exact sum of the subtotals.

⁴ Per 10,000 youth in the population

August 2015 SB94 Supplemental Report

DYC Detention ADP and New Detention Admissions by Judicial District

Region	JD	2016 Population Estimates ¹	ADP		New Admits		
			August 2015	YTD	August 2015	YTD	YTD New Admit Rate ²
<i>Central Region</i>							
	1st	55,832	24.1	23.1	53	99	17.7
	2nd	60,479	56.6	57.2	84	178	29.4
	5th	9,792	3.1	3.4	6	11	11.2
	18th	117,684	42.8	41.9	109	191	16.2
Central Total		243,787	126.7	125.5	252	479	19.6
<i>Northeast Region</i>							
	8th	31,855	16.4	17.1	45	87	27.3
	13th	8,467	3.4	5.2	4	17	20.1
	17th	69,058	26.2	26.0	45	84	12.2
	19th	35,275	20.4	21.5	48	80	22.7
	20th	32,027	4.2	4.4	18	36	11.2
Northeast Total		176,682	70.7	74.1	160	304	17.2
<i>Southern Region</i>							
	3rd	1,880	2.1	1.7	0	3	16.0
	4th	80,316	39.1	37.5	69	134	16.7
	10th	17,742	12.1	13.6	44	74	41.7
	11th	7,203	3.9	3.5	11	22	30.5
	12th	5,251	0.8	1.5	1	4	7.6
	15th	2,174	1.9	1.8	2	3	13.8
	16th	2,795	1.3	0.7	2	4	14.3
Southern Total		117,361	61.1	60.2	129	244	20.8
<i>Western Region</i>							
	6th	6,232	1.1	1.1	4	6	9.6
	7th	10,543	5.5	4.4	8	14	13.3
	9th	9,287	3.7	4.1	2	10	10.8
	14th	5,553	1.2	1.1	2	3	5.4
	21st	15,602	11.4	10.8	24	45	28.8
	22nd	3,036	1.8	2.0	1	5	16.5
Western Total		50,253	24.6	23.5	41	83	16.5
<i>Missing JD or Multiple JDs</i>			2.0	1.7			
Statewide Total		588,083	285.2	285.0	582	1,110	18.9

¹ Source: DOLA 2016 Estimates

² Per 10,000 youth in the population

August 2015 SB94 Supplemental Report

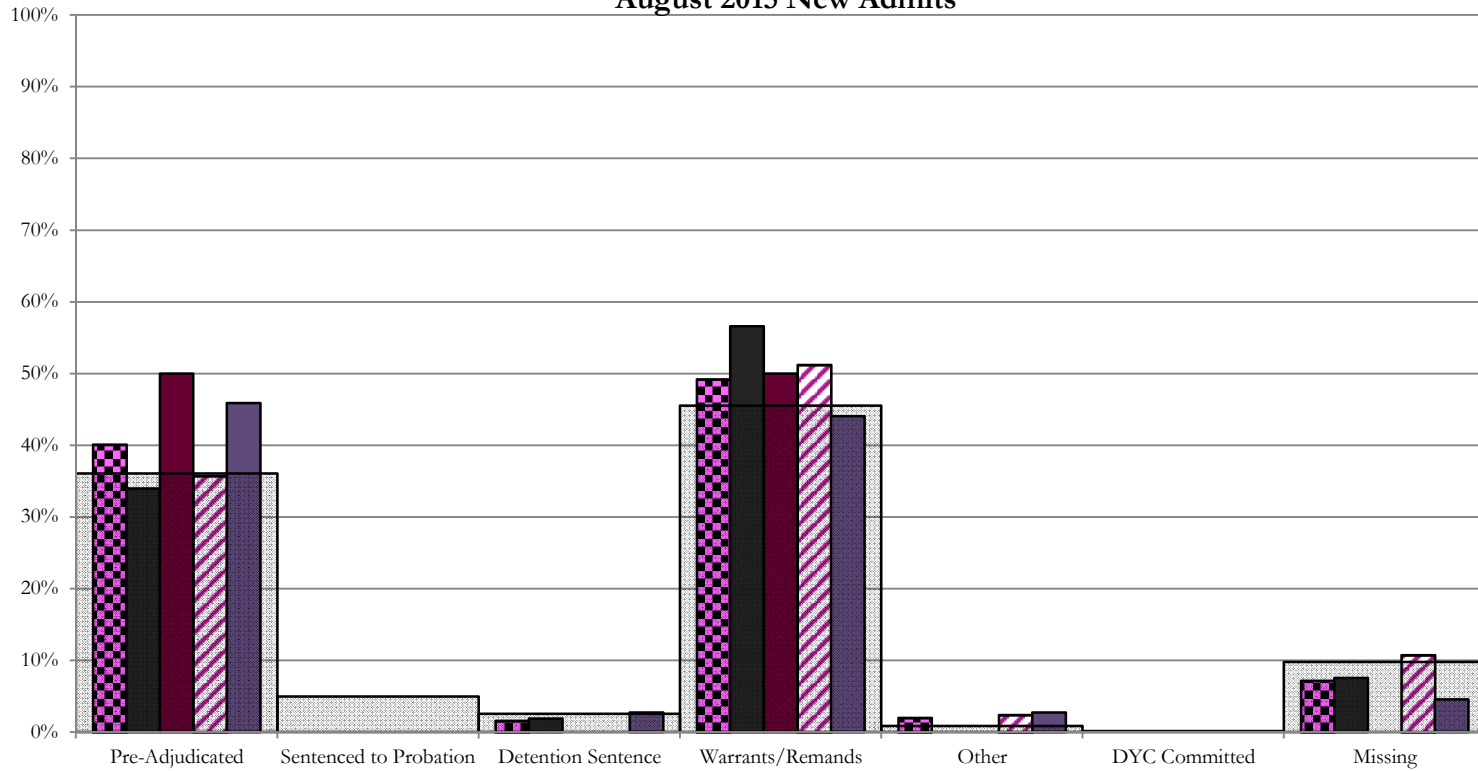
DYC Detention LOS by Judicial District				
Region	JD	YTD Detention Releases	YTD LOS (days)	LOS (days) Compared to State AVG
<i>Central Region</i>				
	1st	97	12.6	-2.5
	2nd	163	16.1	1.0
	5th	11	20.7	5.6
	18th	188	12.6	-2.5
Central Total		459	14.0	-1.0
<i>Northeast Region</i>				
	8th	91	12.3	-2.8
	13th	21	18.5	3.5
	17th	85	11.9	-3.2
	19th	85	19.2	4.1
	20th	34	7.7	-7.4
Northeast Total		316	14.0	-1.1
<i>Southern Region</i>				
	3rd	3	36.0	21.0
	4th	128	20.0	4.9
	10th	79	10.9	-4.1
	11th	24	10.6	-4.5
	12th	6	16.1	1.0
	15th	3	28.3	13.2
	16th	4	8.2	-6.8
Southern Total		247	16.2	1.1
<i>Western Region</i>				
	6th	7	9.9	-5.2
	7th	11	6.8	-8.3
	9th	10	24.8	9.7
	14th	4	26.3	11.2
	21st	42	12.6	-2.5
	22nd	5	11.6	-3.5
Western Total		79	13.7	-1.4
Statewide Total		1,118	15.1	-

August 2015 SB94 JDSAG Supplemental Report

SB94 Reason Detained (RD) by Judicial District

Region	JD	Pre-Adjudicated				Sentenced to Probation				Detention Sentence								Warrants/Remands				Other						DYC Committed		Missing					
		Felony		Misdemeanor		Technical Violator		New Charges		Probation Sentence		Detention Sentence		Valid Court Order (VCO) Truancy		Awaiting DSS (Social Services) Placement		Failure to Appear (FTA)		Failure to Comply (FTC)		Interstate Compact on Juveniles (ICJ) Hold		Immigration Hold		No Bond Hold		Out-of-Country Warrant		Institutional		Parole		Missing	
Monthly New Admits	#	%	#	%	#	%	#	%	#	%	#	%	#	%	#	%	#	%	#	%	#	%	#	%	#	%	#	%	#	%	#	%	#	%	
Central Region																																			
1st	53	9	17.0%	9	17.0%	0	0.0%	0	0.0%	0	0.0%	1	1.9%	0	0.0%	0	0.0%	7	13.2%	23	43.4%	0	0.0%	0	0.0%	0	0.0%	0	0.0%	0	0.0%	0	0.0%	4	7.5%
2nd	84	26	31.0%	4	4.8%	0	0.0%	0	0.0%	0	0.0%	0	0.0%	0	0.0%	0	0.0%	13	15.5%	30	35.7%	2	2.4%	0	0.0%	0	0.0%	0	0.0%	0	0.0%	0	0.0%	0	0.0%
5th	6	1	16.7%	2	33.3%	0	0.0%	0	0.0%	0	0.0%	0	0.0%	0	0.0%	0	0.0%	0	0.0%	3	50.0%	0	0.0%	0	0.0%	0	0.0%	0	0.0%	0	0.0%	0	0.0%	0	0.0%
18th	109	26	23.9%	24	22.0%	0	0.0%	0	0.0%	0	0.0%	3	2.8%	0	0.0%	0	0.0%	12	11.0%	36	33.0%	3	2.8%	0	0.0%	0	0.0%	0	0.0%	0	0.0%	0	0.0%	5	4.6%
Central Total	252	62	25%	39	15%	0	0.0%	0	0.0%	0	0.0%	4	1.6%	0	0.0%	0	0.0%	32	13%	92	37%	5	2.0%	0	0.0%	0	0.0%	0	0.0%	0	0.0%	0	0.0%	18	7.1%
Northeast Region																																			
8th	45	2	4.4%	7	15.6%	3	6.7%	0	0.0%	0	0.0%	1	2.2%	0	0.0%	0	0.0%	10	22.2%	18	40.0%	0	0.0%	0	0.0%	0	0.0%	0	0.0%	0	0.0%	0	0.0%	4	8.9%
13th	4	1	25.0%	0	0.0%	0	0.0%	0	0.0%	0	0.0%	0	0.0%	0	0.0%	0	0.0%	1	25.0%	0	0.0%	0	0.0%	0	0.0%	0	0.0%	0	0.0%	0	0.0%	2	50.0%		
17th	45	13	28.9%	6	13.3%	0	0.0%	1	2.2%	0	0.0%	0	0.0%	0	0.0%	0	0.0%	2	4.4%	15	33.3%	0	0.0%	0	0.0%	0	0.0%	0	0.0%	0	0.0%	0	0.0%	9	20.0%
19th	48	11	22.9%	12	25.0%	10	20.8%	0	0.0%	0	0.0%	0	0.0%	1	2.1%	0	0.0%	6	12.5%	8	16.7%	0	0.0%	0	0.0%	0	0.0%	0	0.0%	0	0.0%	0	0.0%	0	0.0%
20th	18	3	16.7%	0	0.0%	0	0.0%	0	0.0%	0	0.0%	0	0.0%	0	0.0%	0	0.0%	0	0.0%	0	0.0%	0	0.0%	0	0.0%	0	0.0%	0	0.0%	0	0.0%	0	0.0%	15	83.3%
Northeast Total	160	30	19%	25	16%	13	8.1%	1	0.6%	0	0.0%	1	0.6%	0	0.0%	0	0.0%	19	11.9%	41	26%	0	0.0%	0	0.0%	0	0.0%	0	0.0%	0	0.0%	0	0.0%	29	18%
Southern Region																																			
3rd	0	0	0.0%	0	0.0%	0	0.0%	0	0.0%	0	0.0%	0	0.0%	0	0.0%	0	0.0%	0	0.0%	0	0.0%	0	0.0%	0	0.0%	0	0.0%	0	0.0%	0	0.0%	0	0.0%	0	0.0%
4th	69	18	26.1%	5	7.2%	10	14.5%	3	4.3%	0	0.0%	1	1.4%	0	0.0%	0	0.0%	7	10.1%	20	29.0%	0	0.0%	0	0.0%	0	0.0%	0	0.0%	1	1.4%	0	0.0%	4	5.8%
10th	44	6	13.6%	1	2.3%	1	2.3%	0	0.0%	0	0.0%	3	6.8%	0	0.0%	0	0.0%	13	29.5%	19	43.2%	0	0.0%	0	0.0%	0	0.0%	0	0.0%	0	0.0%	1	2.3%	0	0.0%
11th	11	2	18.2%	2	18.2%	1	9.1%	0	0.0%	0	0.0%	1	9.1%	0	0.0%	0	0.0%	3	27.3%	2	18.2%	0	0.0%	0	0.0%	0	0.0%	0	0.0%	0	0.0%	0	0.0%	0	0.0%
12th	1	0	0.0%	0	0.0%	0	0.0%	0	0.0%	0	0.0%	0	0.0%	0	0.0%	0	0.0%	1	100%	0	0.0%	0	0.0%	0	0.0%	0	0.0%	0	0.0%	0	0.0%	0	0.0%	0	0.0%
15th	2	0	0.0%	0	0.0%	0	0.0%	0	0.0%	0	0.0%	0	0.0%	0	0.0%	0	0.0%	0	0.0%	2	100%	0	0.0%	0	0.0%	0	0.0%	0	0.0%	0	0.0%	0	0.0%	0	0.0%
16th	2	0	0.0%	0	0.0%	0	0.0%	0	0.0%	0	0.0%	1	0.0%	0	0.0%	0	0.0%	0	0.0%	0	0%	0	0.0%	0	0.0%	0	0.0%	0	0.0%	0	0.0%	1	0.0%		
Southern Total	129	26	20%	8	6%	12	9.3%	3	2.3%	0	0.0%	6	4.7%	0	0.0%	0	0.0%	24	19%	43	33%	0	0.0%	0	0.0%	0	0.0%	0	0.0%	1	0.8%	0	0.0%	6	5%
Western Region																																			
6th	4	2	50.0%	0	0.0%	0	0.0%	0	0.0%	0	0.0%	0	0.0%	0	0.0%	0	0.0%	0	0.0%	0	0.0%	0	0.0%	0	0.0%	0	0.0%	0	0.0%	0	0.0%	2	50%		
7th	8	2	25.0%	2	25.0%	0	0.0%	0	0.0%	0	0.0%	1	12.5%	0	0.0%	0	0.0%	0	0.0%	3	37.5%	0	0.0%	0	0.0%	0	0.0%	0	0.0%	0	0.0%	0	0.0%	0	0.0%
9th	2	0	0.0%	1	50.0%	0	0.0%	0	0.0%	0	0.0%	1	50.0%	0	0.0%	0	0.0%	0	0.0%	0	0.0%	0	0.0%	0	0.0%	0	0.0%	0	0.0%	0	0.0%	0	0.0%	0	0.0%
14th	2	0	0.0%	0	0.0%	0	0.0%	0	0.0%	0	0.0%	0	0.0%	0	0.0%	0	0.0%	1	50.0%	0	0.0%	0	0.0%	0	0.0%	0	0.0%	0	0.0%	0	0.0%	1	50.0%		
21st	24	10	41.7%	3	12.5%	0	0.0%	0	0.0%	0	0.0%	1	4.2%	0	0.0%	0	0.0%	3	12.5%	6	25.0%	0	0.0%	0	0.0%	0	0.0%	0	0.0%	0	0.0%	1	4.2%		
22nd	1	0	0.0%	0	0.0%	0	0.0%	0	0.0%	0	0.0%	0	0.0%	0	0.0%	0	0.0%	0	0.0%	1	100%	0	0.0%	0	0.0%	0	0.0%	0	0.0%	0	0.0%	0	0.0%		
Western Total	41	14	34%	6	14.6%	0	0.0%	0	0.0%	0	0.0%	3	7.3%	0	0.0%	0	0.0%	4	9.8%	10	24%	0	0.0%	0	0.0%	0	0.0%	0	0.0%	0	0.0%	4	10%		
Individual RD Totals	582	132	23%	78	13%	25	4.3%	4	0.7%	0	0.0%	14	2.4%	1	0.2%	0	0.0%	79	14%	186	32%	5	0.9%	0	0.0%	0	0.0%	0	0.0%	1	0.2%	0	0.0%	57	10%
Statewide Totals	582	210	36.1%	29	5.0%	15	2.6%	265	45.5%	5	0.9%	1	0.2%	0	0.0%	79	14%	186	32%	5	0.9%	0	0.0%	0	0.0%	0	0.0%	1	0.2%	0	0.0%	57	10%		

Central Region SB94 Reason Detained by Judicial District August 2015 New Admits



■ CENTRAL REGION, 252 New Admits

■ 5th JD, 6 New Admits

■ 18th JD, 109 New Admits

■ 1st JD, 53 New Admits

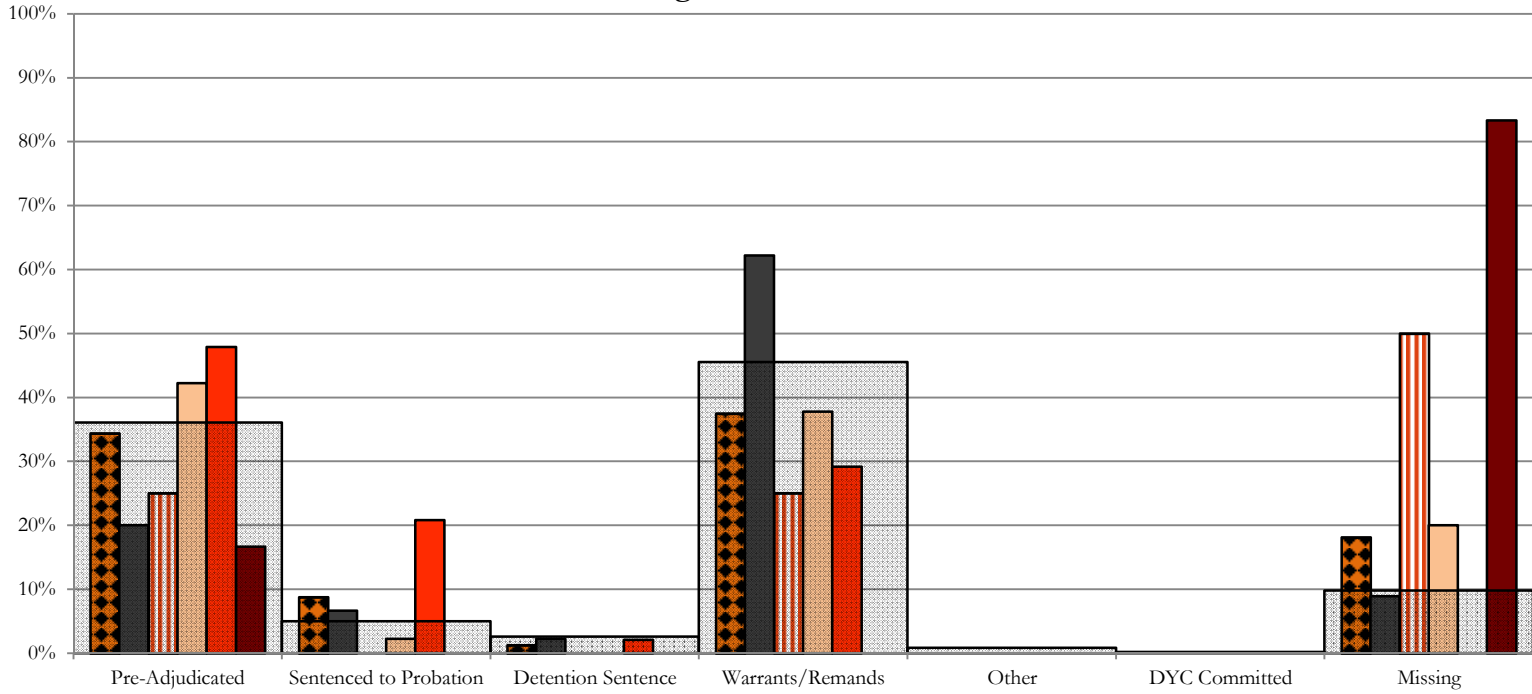
■ 2nd JD, 84 New Admits

■ STATEWIDE, 582 New Admits

Northeast Region

SB94 Reason Detained by Judicial District

August 2015 New Admits

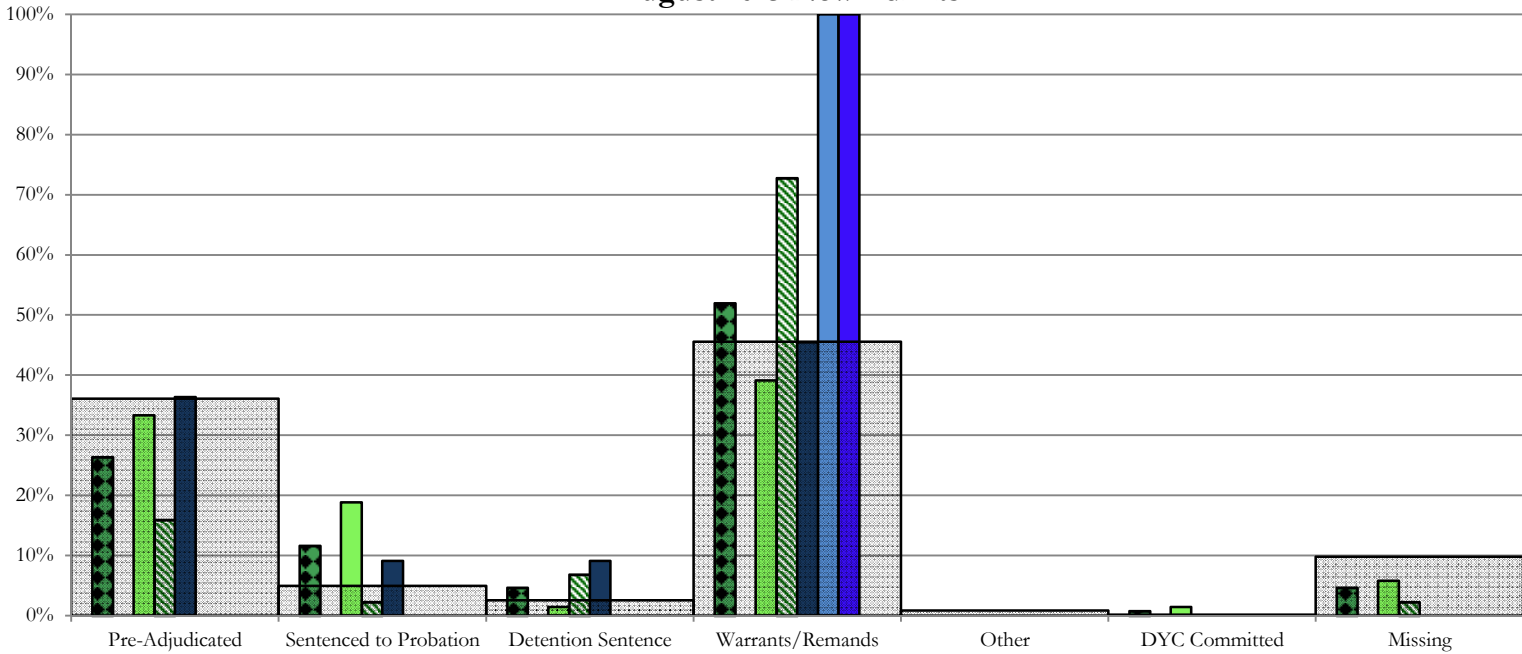


- NORTHEAST REGION, 160 New Admits
- 8th JD, 45 New Admits
- 13th JD, 4 New Admits
- 17th JD, 45 New Admits
- 19th JD, 48 New Admits
- 20th JD, 18 New Admits
- STATEWIDE, 582 New Admits

Southern Region

SB94 Reason Detained by Judicial District

August 2015 New Admits

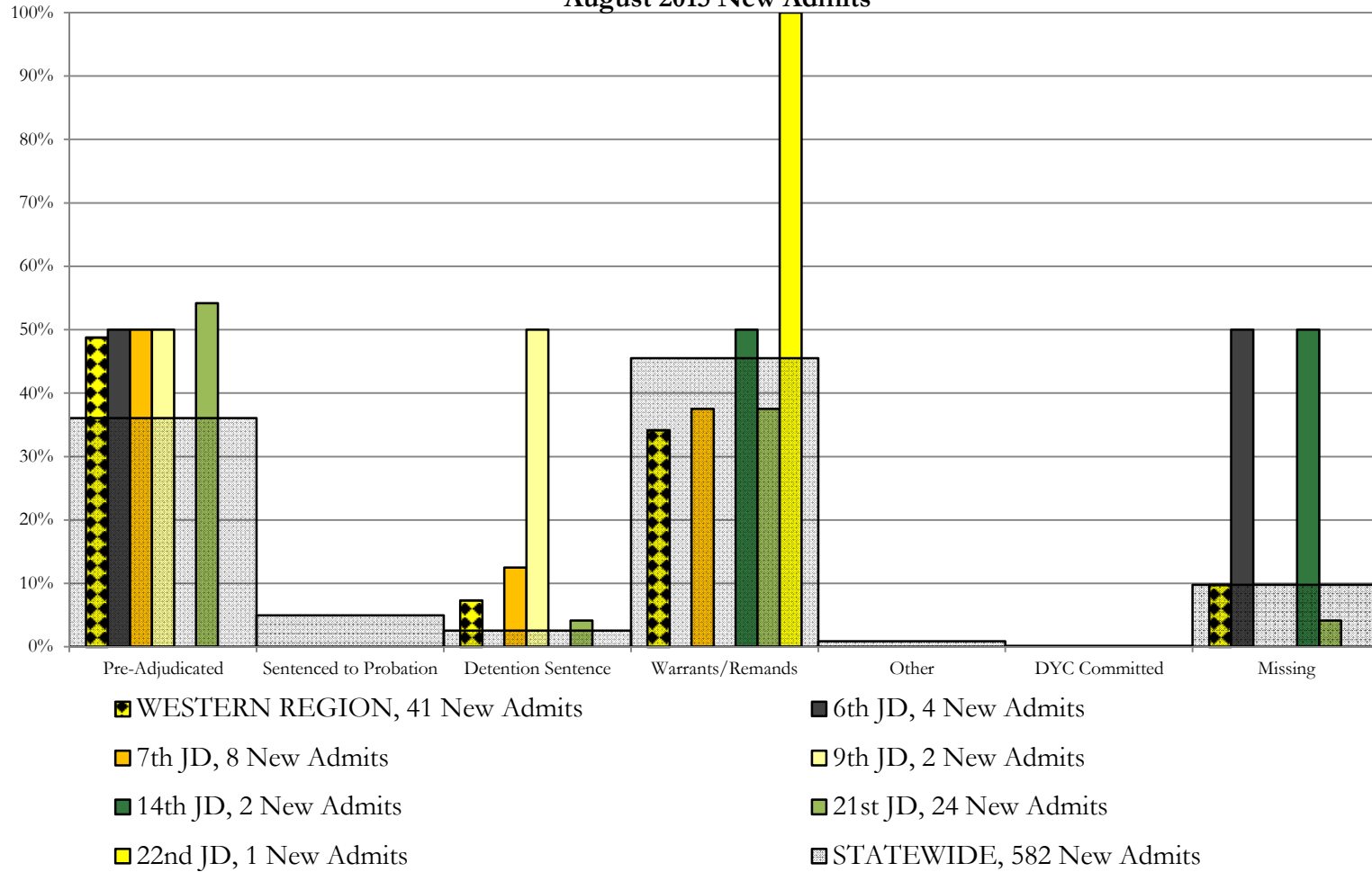


- SOUTHERN REGION, 129 New Admits
- 3rd JD, 0 New Admits
- 4th JD, 69 New Admits
- 10th JD, 44 New Admits
- 11th JD, 11 New Admits
- 12th JD, 1 New Admits
- 15th JD, 2 New Admits
- 16th JD, 2 New Admits
- STATEWIDE, 582 New Admits

Western Region

SB94 Reason Detained by Judicial District

August 2015 New Admits



August 2015 SB94 Supplemental Report

DYC Detention Maximum Youth Served by Judicial District¹

Region	JD	Detention Capacity	Detention ADP		Maximum Youth Served on a Single Day ^{2,3}			
			August 2015	YTD	August 2015		YTD	
					Number of Youth	% of Detention Capacity	Number of Youth	% of Detention Capacity
<i>Central Region</i>								
	1st	37	24.1	23.1	32	86.5%	32	86.5%
	2nd	64	56.6	57.2	61	95.3%	65	101.6%
	5th	4	3.1	3.4	4	100.0%	6	150.0%
	18th	61	42.8	41.9	50	82.0%	51	83.6%
Central Region		166	126.7	125.5	140	84.3%	140	84.3%
<i>Northeast Region</i>								
	8th	21	16.4	17.1	20	95.2%	22	104.8%
	13th	5	3.4	5.2	8	160.0%	10	200.0%
	17th	30	26.2	26.0	30	100.0%	31	103.3%
	19th	25	20.4	21.5	26	104.0%	31	124.0%
	20th	13	4.2	4.4	8	61.5%	8	61.5%
Northeast Region		94	70.7	74.1	79	84.0%	95	101.1%
<i>Southern Region</i>								
	3rd	2	2.1	1.7	3	150.0%	3	150.0%
	4th	51	39.1	37.5	47	92.2%	48	94.1%
	10th	13	12.1	13.6	21	161.5%	21	161.5%
	11th	8	3.9	3.5	7	87.5%	7	87.5%
	12th	4	0.8	1.5	2	50.0%	4	100.0%
	15th	2	1.9	1.8	2	100.0%	2	100.0%
	16th	3	1.3	0.7	2	66.7%	2	66.7%
Southern Region		83	61.1	60.2	75	90.4%	75	90.4%
<i>Western Region</i>								
	6th	5	1.1	1.1	3	60.0%	3	60.0%
	7th	7	5.5	4.4	7	100.0%	7	100.0%
	9th	6	3.7	4.1	7	116.7%	7	116.7%
	14th	3	1.2	1.1	2	66.7%	2	66.7%
	21st	14	11.4	10.8	16	114.3%	16	114.3%
	22nd	4	1.8	2.0	3	75.0%	4	100.0%
Western Region		39	24.6	23.5	31	79.5%	31	79.5%
<i>Missing JD or Multiple JDs</i>			2.0	1.7				
Statewide		382	285.2	285.0	305	79.8%	307	80.4%

¹ Maximum youth served is the highest number of youth in detention on a single day during the month or fiscal year.

² Regional figures are not the sum of judicial districts, but represent the maximum count on one day for the entire region.

³ State figures are not the sum of regional figures, but represent the maximum count on one day for the entire state.

August 2015 SB94 Supplemental Report

SB94 Community ADP by Judicial District

Region	JD	Committed		ICJ		Municipal		Pre-Adjudicated		Sentenced		VCO		Total	
		August	YTD	August	YTD	August	YTD	August	YTD	August	YTD	August	YTD	August	YTD
<i>Central Region</i>															
	1st	0.0	0.0	0.0	0.0	0.0	0.0	196.3	187.9	18.4	14.5	0.0	0.0	214.8	202.4
	2nd	7.0	7.9	4.0	4.0	0.0	0.0	232.6	245.6	66.1	68.5	0.0	0.0	309.6	325.9
	5th	0.0	0.0	0.0	0.0	0.0	0.0	14.7	13.3	31.0	31.0	0.0	0.0	45.7	44.3
	18th	0.7	0.6	0.3	0.1	0.0	0.0	276.7	270.7	38.1	36.6	0.0	0.0	315.8	308.1
Central Total		7.8	8.6	4.3	4.1	0.0	0.0	720.3	717.5	153.6	150.6	0.0	0.0	885.9	880.7
<i>Northeast Region</i>															
	8th	0.0	0.0	0.0	0.0	0.0	0.0	39.4	42.3	17.2	15.7	0.0	0.0	56.6	57.9
	13th	0.0	0.0	0.0	0.0	0.0	0.0	19.7	17.9	23.6	21.7	4.0	4.0	47.3	43.5
	17th	0.0	0.5	0.0	0.0	1.0	1.0	121.1	119.9	30.7	30.6	0.0	0.0	152.8	151.9
	19th	0.8	0.5	0.0	0.0	0.0	0.0	55.8	57.3	47.9	43.2	0.0	0.0	104.5	100.9
	20th	2.0	2.0	0.0	0.0	0.0	0.0	92.8	89.8	69.8	68.7	0.0	0.0	164.6	160.5
Northeast Total		2.8	2.9	0.0	0.0	1.0	1.0	328.8	327.0	189.2	179.9	4.0	4.0	525.8	514.8
<i>Southern Region</i>															
	3rd	0.0	0.2	0.0	0.0	0.0	0.0	4.8	4.1	5.0	4.7	2.0	1.9	11.8	10.9
	4th	2.7	1.9	0.0	0.0	2.0	2.0	168.5	158.0	108.6	104.5	2.0	1.5	283.9	267.9
	10th	0.4	0.2	0.0	0.0	37.3	34.4	19.1	18.9	18.2	17.8	8.4	8.3	83.4	79.7
	11th	0.0	0.0	0.0	0.0	0.9	0.5	14.6	15.2	26.2	25.0	0.0	0.0	41.7	40.7
	12th	0.0	0.0	0.0	0.0	0.0	0.0	8.8	8.7	5.3	5.4	0.0	0.0	14.1	14.1
	15th	0.0	0.0	0.0	0.0	0.0	0.0	2.8	2.4	4.3	3.3	0.0	0.0	7.1	5.7
	16th	0.0	0.0	0.0	0.0	0.0	0.0	4.0	4.0	14.9	14.9	4.0	4.0	22.9	22.9
Southern Total		3.2	2.3	0.0	0.0	40.2	36.9	222.7	211.3	182.4	175.7	16.4	15.7	464.9	442.0
<i>Western Region</i>															
	6th	0.0	0.0	0.0	0.0	0.0	0.0	13.5	10.9	0.0	0.0	1.0	1.0	14.6	11.9
	7th	0.0	0.0	0.0	0.0	0.0	0.1	17.0	16.0	14.4	13.8	0.0	0.0	31.4	29.8
	9th	0.0	0.0	0.0	0.0	0.0	0.0	13.6	11.7	3.1	3.3	0.0	0.0	16.7	15.1
	14th	0.0	0.0	0.0	0.0	0.0	0.0	13.4	14.1	6.0	6.1	0.0	0.0	19.4	20.2
	21st	0.0	0.0	0.0	0.0	0.0	0.0	53.2	47.4	8.8	9.4	0.0	0.0	61.9	56.7
	22nd	0.0	0.0	1.0	0.5	0.0	0.0	5.1	5.5	1.0	1.3	0.0	0.0	7.1	7.4
Western Total		0.0	0.0	1.0	0.5	0.0	0.1	115.9	105.6	33.3	34.0	1.0	1.0	151.2	141.2
Statewide Total		13.7	13.8	5.3	4.6	41.2	38.0	1387.7	1361.4	558.6	540.1	21.4	20.7	2027.9	1978.7