

July 2015 FY 2015-2016 SB94 JDSAG SUPPLEMENTAL REPORT

Prepared by the Division of Youth Corrections (DYC)
Research and Evaluation Unit
August 24, 2015



COLORADO

**Office of Children,
Youth & Families**

Division of Youth Corrections

July 2015 SB94 Supplemental Report

DYC Commitment ADP & New Commitments by Judicial District

| Region | JD ¹ | 2016 Population Estimates ² | ADP ³ | | New Commitments | | |
|-------------------------|-----------------|----------------------------------------------|------------------|--------------|-----------------|-----------|-----------------------|
| | | | July 2015 | YTD | July 2015 | YTD | YTD Rate ⁴ |
| <i>Central Region</i> | | | | | | | |
| | 1st | 55,832 | 71.4 | 71.4 | 5 | 5 | 0.9 |
| | 2nd | 60,479 | 139.4 | 139.4 | 6 | 6 | 1.0 |
| | 5th | 9,792 | 11.0 | 11.0 | 0 | 0 | 0.0 |
| | 18th | 117,684 | 83.6 | 83.6 | 3 | 3 | 0.3 |
| Central Total | | 243,787 | 305.3 | 305.3 | 14 | 14 | 0.6 |
| <i>Northeast Region</i> | | | | | | | |
| | 8th | 31,855 | 39.5 | 39.5 | 2 | 2 | 0.6 |
| | 13th | 8,467 | 7.8 | 7.8 | 0 | 0 | 0.0 |
| | 17th | 69,058 | 88.7 | 88.7 | 2 | 2 | 0.3 |
| | 19th | 35,275 | 52.2 | 52.2 | 5 | 5 | 1.4 |
| | 20th | 32,027 | 12.7 | 12.7 | 1 | 1 | 0.3 |
| Northeast Total | | 176,682 | 200.9 | 200.9 | 10 | 10 | 0.6 |
| <i>Southern Region</i> | | | | | | | |
| | 3rd | 1,880 | 2.6 | 2.6 | 0 | 0 | 0.0 |
| | 4th | 80,316 | 97.3 | 97.3 | 4 | 4 | 0.5 |
| | 10th | 17,742 | 36.4 | 36.4 | 1 | 1 | 0.6 |
| | 11th | 7,203 | 6.2 | 6.2 | 0 | 0 | 0.0 |
| | 12th | 5,251 | 5.0 | 5.0 | 1 | 1 | 1.9 |
| | 15th | 2,174 | 1.3 | 1.3 | 1 | 1 | 4.6 |
| | 16th | 2,795 | 1.6 | 1.6 | 0 | 0 | 0.0 |
| Southern Total | | 117,361 | 150.4 | 150.4 | 7 | 7 | 0.6 |
| <i>Western Region</i> | | | | | | | |
| | 6th | 6,232 | 14.5 | 14.5 | 0 | 0 | 0.0 |
| | 7th | 10,543 | 9.7 | 9.7 | 0 | 0 | 0.0 |
| | 9th | 9,287 | 7.3 | 7.3 | 1 | 1 | 1.1 |
| | 14th | 5,553 | 3.0 | 3.0 | 0 | 0 | 0.0 |
| | 21st | 15,602 | 31.0 | 31.0 | 0 | 0 | 0.0 |
| | 22nd | 3,036 | 6.0 | 6.0 | 0 | 0 | 0.0 |
| Western Total | | 50,253 | 71.6 | 71.6 | 1 | 1 | 0.2 |
| Statewide Total | | 588,083 | 728.2 | 728.2 | 32 | 32 | 0.5 |

¹ JD represents the judicial district in which the client was committed. Regional totals are a sum of their respective judicial districts. Regional totals reported here may differ slightly from those reported in the Monthly Population Report, where region is defined by active caseloads.

² Source: DOLA 2016 Estimates

³ Due to rounding, totals shown may not be an exact sum of the subtotals.

⁴ Per 10,000 youth in the population

July 2015 SB94 Supplemental Report

DYC Detention ADP and New Detention Admissions by Judicial District

| Region | JD | 2016 Population Estimates ¹ | ADP | | New Admits | | |
|-----------------------------------|------|----------------------------------------------|--------------|--------------|------------|------------|------------------------------------|
| | | | July 2015 | YTD | July 2015 | YTD | YTD New Admit Rate ² |
| <i>Central Region</i> | | | | | | | |
| | 1st | 55,832 | 22.0 | 22.0 | 46 | 46 | 8.2 |
| | 2nd | 60,479 | 57.7 | 57.7 | 94 | 94 | 15.5 |
| | 5th | 9,792 | 3.6 | 3.6 | 5 | 5 | 5.1 |
| | 18th | 117,684 | 41.2 | 41.2 | 83 | 83 | 7.1 |
| Central Total | | 243,787 | 124.6 | 124.6 | 228 | 228 | 9.4 |
| <i>Northeast Region</i> | | | | | | | |
| | 8th | 31,855 | 17.7 | 17.7 | 42 | 42 | 13.2 |
| | 13th | 8,467 | 6.9 | 6.9 | 13 | 13 | 15.4 |
| | 17th | 69,058 | 25.8 | 25.8 | 39 | 39 | 5.6 |
| | 19th | 35,275 | 22.5 | 22.5 | 30 | 30 | 8.5 |
| | 20th | 32,027 | 4.6 | 4.6 | 18 | 18 | 5.6 |
| Northeast Total | | 176,682 | 77.5 | 77.5 | 142 | 142 | 8.0 |
| <i>Southern Region</i> | | | | | | | |
| | 3rd | 1,880 | 1.3 | 1.3 | 3 | 3 | 16.0 |
| | 4th | 80,316 | 35.9 | 35.9 | 65 | 65 | 8.1 |
| | 10th | 17,742 | 16.0 | 16.0 | 30 | 30 | 16.9 |
| | 11th | 7,203 | 3.0 | 3.0 | 11 | 11 | 15.3 |
| | 12th | 5,251 | 2.1 | 2.1 | 3 | 3 | 5.7 |
| | 15th | 2,174 | 1.7 | 1.7 | 1 | 1 | 4.6 |
| | 16th | 2,795 | 0.1 | 0.1 | 2 | 2 | 7.2 |
| Southern Total | | 117,361 | 60.2 | 60.2 | 115 | 115 | 9.8 |
| <i>Western Region</i> | | | | | | | |
| | 6th | 6,232 | 1.1 | 1.1 | 2 | 2 | 3.2 |
| | 7th | 10,543 | 3.4 | 3.4 | 6 | 6 | 5.7 |
| | 9th | 9,287 | 4.6 | 4.6 | 8 | 8 | 8.6 |
| | 14th | 5,553 | 1.0 | 1.0 | 1 | 1 | 1.8 |
| | 21st | 15,602 | 10.2 | 10.2 | 21 | 21 | 13.5 |
| | 22nd | 3,036 | 2.1 | 2.1 | 4 | 4 | 13.2 |
| Western Total | | 50,253 | 22.4 | 22.4 | 42 | 42 | 8.4 |
| <i>Missing JD or Multiple JDs</i> | | | <i>0.3</i> | <i>0.3</i> | | | |
| Statewide Total | | 588,083 | 285.1 | 285.1 | 527 | 527 | 9.0 |

¹ Source: DOLA 2016 Estimates

² Per 10,000 youth in the population

July 2015 SB94 Supplemental Report

| DYC Detention LOS by Judicial District | | | | |
|----------------------------------------|------|------------------------|----------------|----------------------------------|
| Region | JD | YTD Detention Releases | YTD LOS (days) | LOS (days) Compared to State AVG |
| <i>Central Region</i> | | | | |
| | 1st | 51 | 12.1 | -2.2 |
| | 2nd | 96 | 15.7 | 1.4 |
| | 5th | 7 | 26.9 | 12.5 |
| | 18th | 94 | 14.3 | -0.1 |
| Central Total | | 248 | 14.7 | 0.4 |
| <i>Northeast Region</i> | | | | |
| | 8th | 46 | 12.9 | -1.4 |
| | 13th | 9 | 7.3 | -7.1 |
| | 17th | 37 | 11.7 | -2.7 |
| | 19th | 41 | 15.6 | 1.2 |
| | 20th | 20 | 7.8 | -6.6 |
| Northeast Total | | 153 | 12.3 | -2.0 |
| <i>Southern Region</i> | | | | |
| | 3rd | 1 | 0.0 | -14.3 |
| | 4th | 62 | 18.5 | 4.2 |
| | 10th | 30 | 12.5 | -1.8 |
| | 11th | 12 | 7.4 | -7.0 |
| | 12th | 4 | 14.7 | 0.3 |
| | 15th | 1 | 39.5 | 25.2 |
| | 16th | 2 | 4.2 | -10.1 |
| Southern Total | | 112 | 15.3 | 1.0 |
| <i>Western Region</i> | | | | |
| | 6th | 2 | 1.1 | -13.3 |
| | 7th | 7 | 7.7 | -6.6 |
| | 9th | 2 | 1.0 | -13.3 |
| | 14th | 2 | 34.5 | 20.1 |
| | 21st | 17 | 11.1 | -3.3 |
| | 22nd | 3 | 11.0 | -3.3 |
| Western Total | | 33 | 10.6 | -3.8 |
| Statewide Total | | 544 | 14.4 | - |

July 2015 SB94 JDSAG Supplemental Report

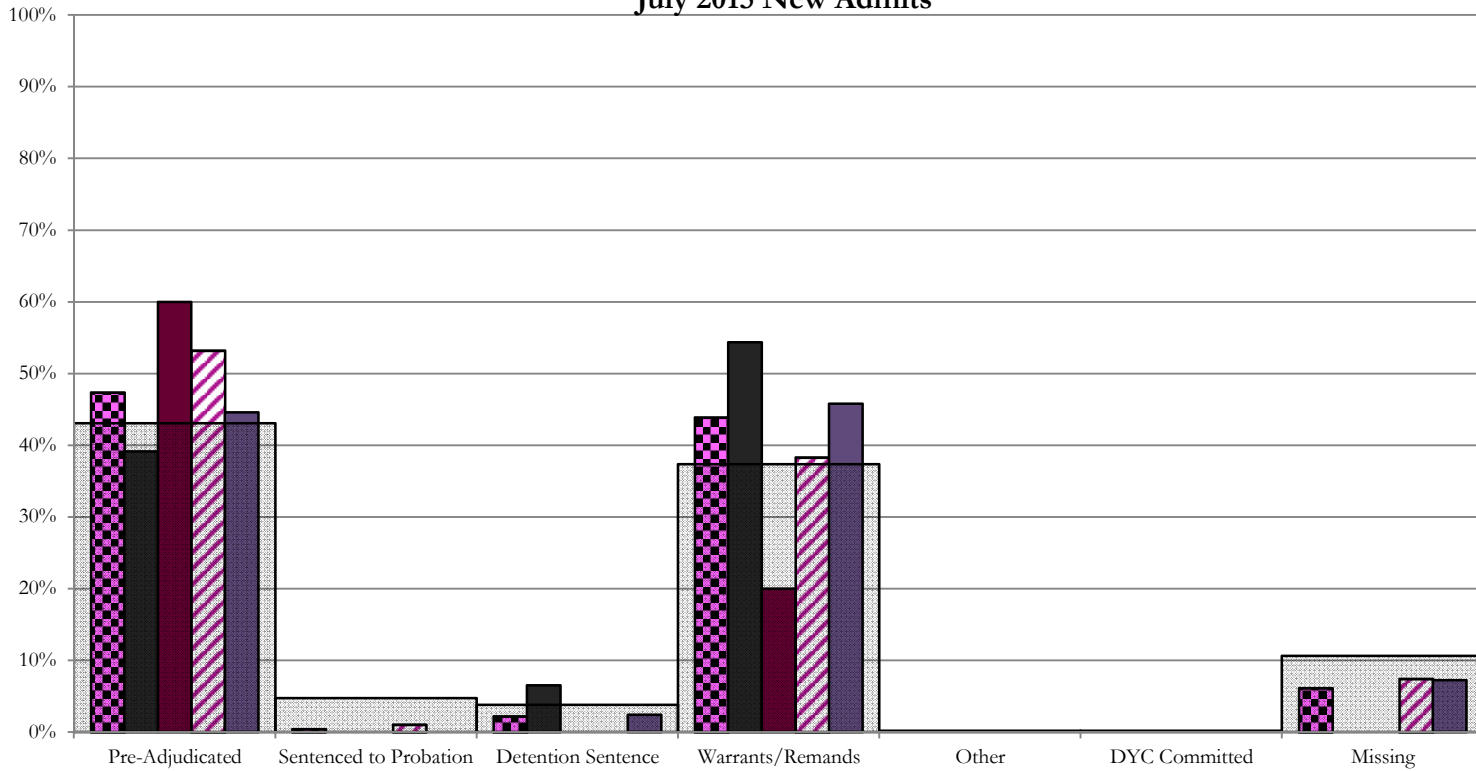
SB94 Reason Detained (RD) by Judicial District

| Region | JD | Pre-Adjudicated | | | | Sentenced to Probation | | | | Detention Sentence | | | | | | | | Warrants/Remands | | | | Other | | | | | | DYC Committed | | Missing | | | | | | | |
|-----------------------------|------------|-----------------|--------------|-------------|--------------|------------------------|-------------|-------------|-------------|--------------------|-------------|--------------------|-------------|---------------------------------|-------------|------------------------------------------|-------------|-------------------------|--------------|-------------------------|-------------|--------------------------------------------|-------------|------------------|-------------|--------------|-------------|------------------------|-------------|---------------|-------------|-----------|-------------|-----------|-------------|----|-------|
| | | Felony | | Misdemeanor | | Technical Violator | | New Charges | | Probation Sentence | | Detention Sentence | | Valid Court Order (VCO) Truancy | | Awaiting DSS (Social Services) Placement | | Failure to Appear (FTA) | | Failure to Comply (FTC) | | Interstate Compact on Juveniles (ICJ) Hold | | Immigration Hold | | No Bond Hold | | Out-of-Country Warrant | | Institutional | | Parole | | Missing | | | |
| Monthly New Admits | # | % | # | % | # | % | # | % | # | % | # | % | # | % | # | % | # | % | # | % | # | % | # | % | # | % | # | % | # | % | # | % | # | % | | | |
| <i>Central Region</i> | | | | | | | | | | | | | | | | | | | | | | | | | | | | | | | | | | | | | |
| 1st | 46 | 11 | 23.9% | 7 | 15.2% | 0 | 0.0% | 0 | 0.0% | 0 | 0.0% | 3 | 6.5% | 0 | 0.0% | 0 | 0.0% | 7 | 15.2% | 18 | 39.1% | 0 | 0.0% | 0 | 0.0% | 0 | 0.0% | 0 | 0.0% | 0 | 0.0% | 0 | 0.0% | 0 | 0.0% | 0 | 0.0% |
| 2nd | 94 | 42 | 44.7% | 8 | 8.5% | 0 | 0.0% | 1 | 1.1% | 0 | 0.0% | 0 | 0.0% | 0 | 0.0% | 0 | 0.0% | 13 | 13.8% | 23 | 24.5% | 0 | 0.0% | 0 | 0.0% | 0 | 0.0% | 0 | 0.0% | 0 | 0.0% | 0 | 0.0% | 0 | 0.0% | 7 | 7.4% |
| 5th | 5 | 2 | 40.0% | 1 | 20.0% | 0 | 0.0% | 0 | 0.0% | 0 | 0.0% | 0 | 0.0% | 0 | 0.0% | 0 | 0.0% | 0 | 0.0% | 1 | 20.0% | 0 | 0.0% | 0 | 0.0% | 0 | 0.0% | 0 | 0.0% | 0 | 0.0% | 0 | 0.0% | 1 | 0.0% | | |
| 18th | 83 | 23 | 27.7% | 14 | 16.9% | 0 | 0.0% | 0 | 0.0% | 0 | 0.0% | 2 | 2.4% | 0 | 0.0% | 0 | 0.0% | 12 | 14.5% | 26 | 31.3% | 0 | 0.0% | 0 | 0.0% | 0 | 0.0% | 0 | 0.0% | 0 | 0.0% | 0 | 0.0% | 6 | 7.2% | | |
| Central Total | 228 | 78 | 34% | 30 | 13% | 0 | 0.0% | 1 | 0.4% | 0 | 0.0% | 5 | 2.2% | 0 | 0.0% | 0 | 0.0% | 32 | 14% | 68 | 30% | 0 | 0.0% | 0 | 0.0% | 0 | 0.0% | 0 | 0.0% | 0 | 0.0% | 0 | 0.0% | 14 | 6.1% | | |
| <i>Northeast Region</i> | | | | | | | | | | | | | | | | | | | | | | | | | | | | | | | | | | | | | |
| 8th | 42 | 9 | 21.4% | 5 | 11.9% | 0 | 0.0% | 0 | 0.0% | 0 | 0.0% | 0 | 0.0% | 0 | 0.0% | 0 | 0.0% | 2 | 4.8% | 11 | 26.2% | 0 | 0.0% | 0 | 0.0% | 0 | 0.0% | 0 | 0.0% | 0 | 0.0% | 0 | 0.0% | 0 | 0.0% | 15 | 35.7% |
| 13th | 13 | 5 | 38.5% | 0 | 0.0% | 0 | 0.0% | 0 | 0.0% | 0 | 0.0% | 0 | 0.0% | 0 | 0.0% | 0 | 0.0% | 0 | 0.0% | 2 | 15.4% | 0 | 0.0% | 0 | 0.0% | 0 | 0.0% | 0 | 0.0% | 0 | 0.0% | 0 | 0.0% | 6 | 46.2% | | |
| 17th | 39 | 9 | 23.1% | 4 | 10.3% | 0 | 0.0% | 0 | 0.0% | 0 | 0.0% | 0 | 0.0% | 0 | 0.0% | 0 | 0.0% | 6 | 15.4% | 17 | 43.6% | 0 | 0.0% | 0 | 0.0% | 0 | 0.0% | 0 | 0.0% | 0 | 0.0% | 0 | 0.0% | 4 | 10.3% | | |
| 19th | 30 | 7 | 23.3% | 1 | 3.3% | 12 | 40.0% | 0 | 0.0% | 0 | 0.0% | 0 | 0.0% | 0 | 0.0% | 0 | 0.0% | 4 | 13.3% | 4 | 13.3% | 0 | 0.0% | 0 | 0.0% | 0 | 0.0% | 0 | 0.0% | 0 | 0.0% | 0 | 0.0% | 2 | 6.7% | | |
| 20th | 18 | 6 | 33.3% | 1 | 5.6% | 0 | 0.0% | 0 | 0.0% | 0 | 0.0% | 3 | 16.7% | 0 | 0.0% | 0 | 0.0% | 0 | 0.0% | 0 | 0.0% | 0 | 0.0% | 0 | 0.0% | 0 | 0.0% | 0 | 0.0% | 0 | 0.0% | 0 | 0.0% | 8 | 44.4% | | |
| Northeast Total | 142 | 36 | 25% | 11 | 8% | 12 | 8.5% | 0 | 0.0% | 0 | 0.0% | 3 | 2.1% | 0 | 0.0% | 0 | 0.0% | 12 | 8.5% | 34 | 24% | 0 | 0.0% | 0 | 0.0% | 0 | 0.0% | 0 | 0.0% | 0 | 0.0% | 0 | 0.0% | 34 | 24% | | |
| <i>Southern Region</i> | | | | | | | | | | | | | | | | | | | | | | | | | | | | | | | | | | | | | |
| 3rd | 3 | 0 | 0.0% | 2 | 67% | 0 | 0.0% | 0 | 0.0% | 0 | 0.0% | 0 | 0.0% | 0 | 0.0% | 0 | 0.0% | 0 | 0.0% | 1 | 33.3% | 0 | 0.0% | 0 | 0.0% | 0 | 0.0% | 0 | 0.0% | 0 | 0.0% | 0 | 0.0% | 0 | 0.0% | | |
| 4th | 65 | 20 | 30.8% | 10 | 15.4% | 7 | 10.8% | 1 | 1.5% | 0 | 0.0% | 0 | 0.0% | 0 | 0.0% | 0 | 0.0% | 5 | 7.7% | 18 | 27.7% | 0 | 0.0% | 0 | 0.0% | 0 | 0.0% | 0 | 0.0% | 1 | 1.5% | 0 | 0.0% | 3 | 4.6% | | |
| 10th | 30 | 9 | 30.0% | 1 | 3.3% | 0 | 0.0% | 0 | 0.0% | 0 | 0.0% | 6 | 20.0% | 0 | 0.0% | 0 | 0.0% | 7 | 23.3% | 6 | 20.0% | 0 | 0.0% | 0 | 0.0% | 0 | 0.0% | 0 | 0.0% | 0 | 0.0% | 0 | 0.0% | 1 | 3.3% | | |
| 11th | 11 | 3 | 27.3% | 3 | 27.3% | 1 | 9.1% | 0 | 0.0% | 0 | 0.0% | 1 | 9.1% | 0 | 0.0% | 0 | 0.0% | 1 | 9.1% | 2 | 18.2% | 0 | 0.0% | 0 | 0.0% | 0 | 0.0% | 0 | 0.0% | 0 | 0.0% | 0 | 0.0% | 0 | 0.0% | | |
| 12th | 3 | 1 | 33.3% | 1 | 33.3% | 0 | 0.0% | 0 | 0.0% | 0 | 0.0% | 0 | 0.0% | 0 | 0.0% | 0 | 0.0% | 0 | 0.0% | 1 | 33.3% | 0 | 0.0% | 0 | 0.0% | 0 | 0.0% | 0 | 0.0% | 0 | 0.0% | 0 | 0.0% | 0 | 0.0% | | |
| 15th | 1 | 1 | 100.0% | 0 | 0.0% | 0 | 0.0% | 0 | 0.0% | 0 | 0.0% | 0 | 0.0% | 0 | 0.0% | 0 | 0.0% | 0 | 0.0% | 0 | 0% | 0 | 0.0% | 0 | 0.0% | 0 | 0.0% | 0 | 0.0% | 0 | 0.0% | 0 | 0.0% | 0 | 0.0% | | |
| 16th | 2 | 0 | 0.0% | 0 | 0.0% | 0 | 0.0% | 0 | 0.0% | 0 | 0.0% | 1 | 0.0% | 0 | 0.0% | 0 | 0.0% | 0 | 0.0% | 1 | 0% | 0 | 0.0% | 0 | 0.0% | 0 | 0.0% | 0 | 0.0% | 0 | 0.0% | 0 | 0.0% | 0 | 0.0% | | |
| Southern Total | 115 | 34 | 30% | 17 | 15% | 8 | 7.0% | 1 | 0.9% | 0 | 0.0% | 8 | 7.0% | 0 | 0.0% | 0 | 0.0% | 13 | 11% | 29 | 25% | 0 | 0.0% | 0 | 0.0% | 0 | 0.0% | 0 | 0.0% | 1 | 0.9% | 0 | 0.0% | 4 | 3% | | |
| <i>Western Region</i> | | | | | | | | | | | | | | | | | | | | | | | | | | | | | | | | | | | | | |
| 6th | 2 | 0 | 0.0% | 0 | 0.0% | 0 | 0.0% | 0 | 0.0% | 0 | 0.0% | 0 | 0.0% | 0 | 0.0% | 0 | 0.0% | 0 | 0.0% | 0 | 0.0% | 0 | 0.0% | 0 | 0.0% | 0 | 0.0% | 0 | 0.0% | 0 | 0.0% | 0 | 0.0% | 2 | 100% | | |
| 7th | 6 | 2 | 33.3% | 0 | 0.0% | 0 | 0.0% | 0 | 0.0% | 0 | 0.0% | 3 | 50.0% | 0 | 0.0% | 0 | 0.0% | 0 | 0.0% | 1 | 16.7% | 0 | 0.0% | 0 | 0.0% | 0 | 0.0% | 0 | 0.0% | 0 | 0.0% | 0 | 0.0% | 0 | 0.0% | | |
| 9th | 8 | 3 | 37.5% | 3 | 37.5% | 2 | 25.0% | 0 | 0.0% | 0 | 0.0% | 0 | 0.0% | 0 | 0.0% | 0 | 0.0% | 0 | 0.0% | 0 | 0.0% | 0 | 0.0% | 0 | 0.0% | 0 | 0.0% | 0 | 0.0% | 0 | 0.0% | 0 | 0.0% | 0 | 0.0% | | |
| 14th | 1 | 0 | 0.0% | 1 | 100.0% | 0 | 0.0% | 0 | 0.0% | 0 | 0.0% | 0 | 0.0% | 0 | 0.0% | 0 | 0.0% | 0 | 0.0% | 0 | 0.0% | 0 | 0.0% | 0 | 0.0% | 0 | 0.0% | 0 | 0.0% | 0 | 0.0% | 0 | 0.0% | 0 | 0.0% | | |
| 21st | 21 | 9 | 42.9% | 2 | 9.5% | 0 | 0.0% | 0 | 0.0% | 0 | 0.0% | 1 | 4.8% | 0 | 0.0% | 0 | 0.0% | 1 | 4.8% | 6 | 28.6% | 0 | 0.0% | 0 | 0.0% | 0 | 0.0% | 0 | 0.0% | 0 | 0.0% | 0 | 0.0% | 2 | 9.5% | | |
| 22nd | 4 | 1 | 25.0% | 0 | 0.0% | 1 | 25.0% | 0 | 0.0% | 0 | 0.0% | 0 | 0.0% | 0 | 0.0% | 0 | 0.0% | 0 | 0.0% | 1 | 25.0% | 1 | 25.0% | 0 | 0.0% | 0 | 0.0% | 0 | 0.0% | 0 | 0.0% | 0 | 0.0% | 0 | 0.0% | | |
| Western Total | 42 | 15 | 36% | 6 | 14.3% | 3 | 7.1% | 0 | 0.0% | 0 | 0.0% | 4 | 9.5% | 0 | 0.0% | 0 | 0.0% | 1 | 2.4% | 8 | 19% | 1 | 2.4% | 0 | 0.0% | 0 | 0.0% | 0 | 0.0% | 0 | 0.0% | 4 | 10% | | | | |
| Individual RD Totals | 527 | 163 | 31% | 64 | 12% | 23 | 4.4% | 2 | 0.4% | 0 | 0.0% | 20 | 3.8% | 0 | 0.0% | 0 | 0.0% | 58 | 11% | 139 | 26% | 1 | 0.2% | 0 | 0.0% | 0 | 0.0% | 0 | 0.0% | 1 | 0.2% | 0 | 0.0% | 56 | 11% | | |
| Statewide Totals | 527 | 227 | 43.1% | 25 | 4.7% | 20 | 3.8% | 1 | 0.2% | 0 | 0.0% | 20 | 3.8% | 0 | 0.0% | 0 | 0.0% | 197 | 37.4% | 1 | 0.2% | 0 | 0.0% | 0 | 0.0% | 0 | 0.0% | 1 | 0.2% | 0 | 0.0% | 56 | 11% | | | | |

Central Region

SB94 Reason Detained by Judicial District

July 2015 New Admits



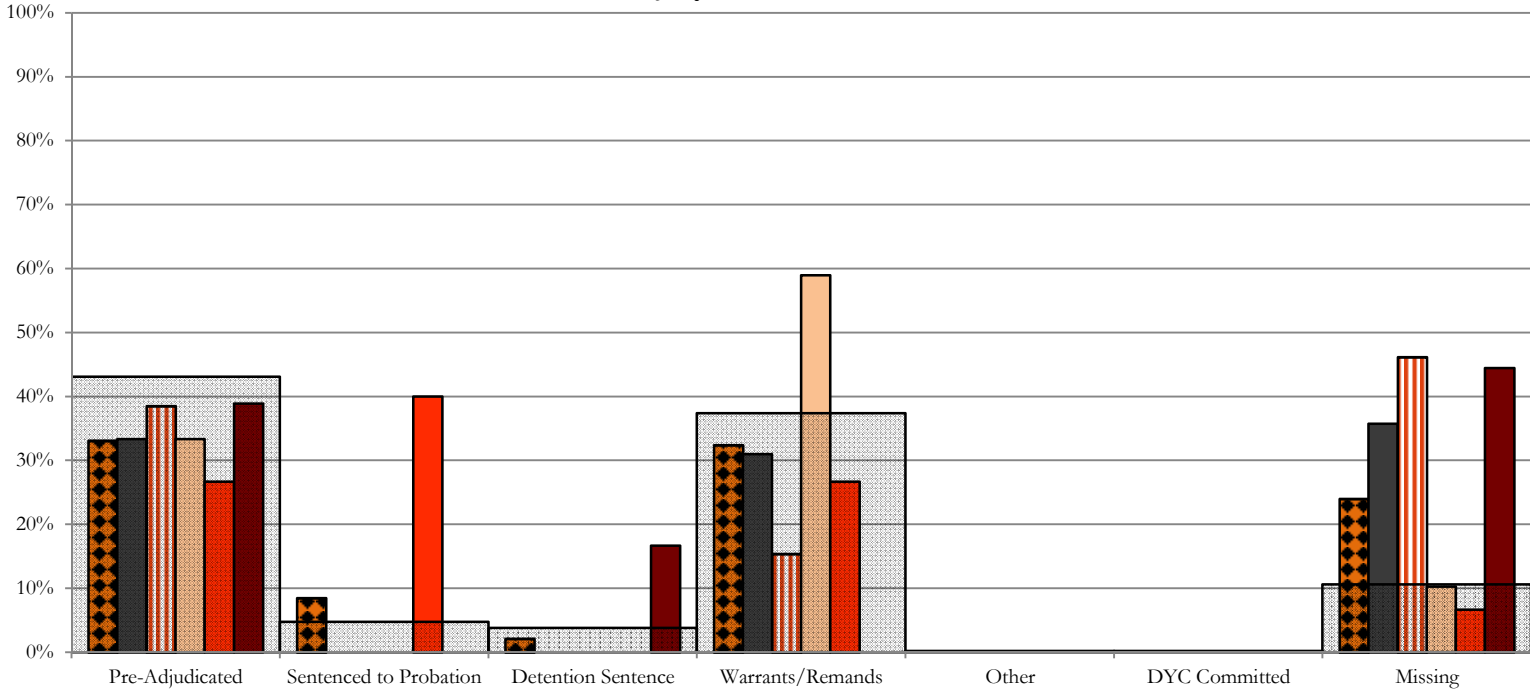
CENTRAL REGION, 228 New Admits
 1st JD, 46 New Admits
 5th JD, 5 New Admits
 2nd JD, 94 New Admits
 18th JD, 83 New Admits
 STATEWIDE, 527 New Admits

1st JD, 46 New Admits
 2nd JD, 94 New Admits
 STATEWIDE, 527 New Admits

Northeast Region

SB94 Reason Detained by Judicial District

July 2015 New Admits

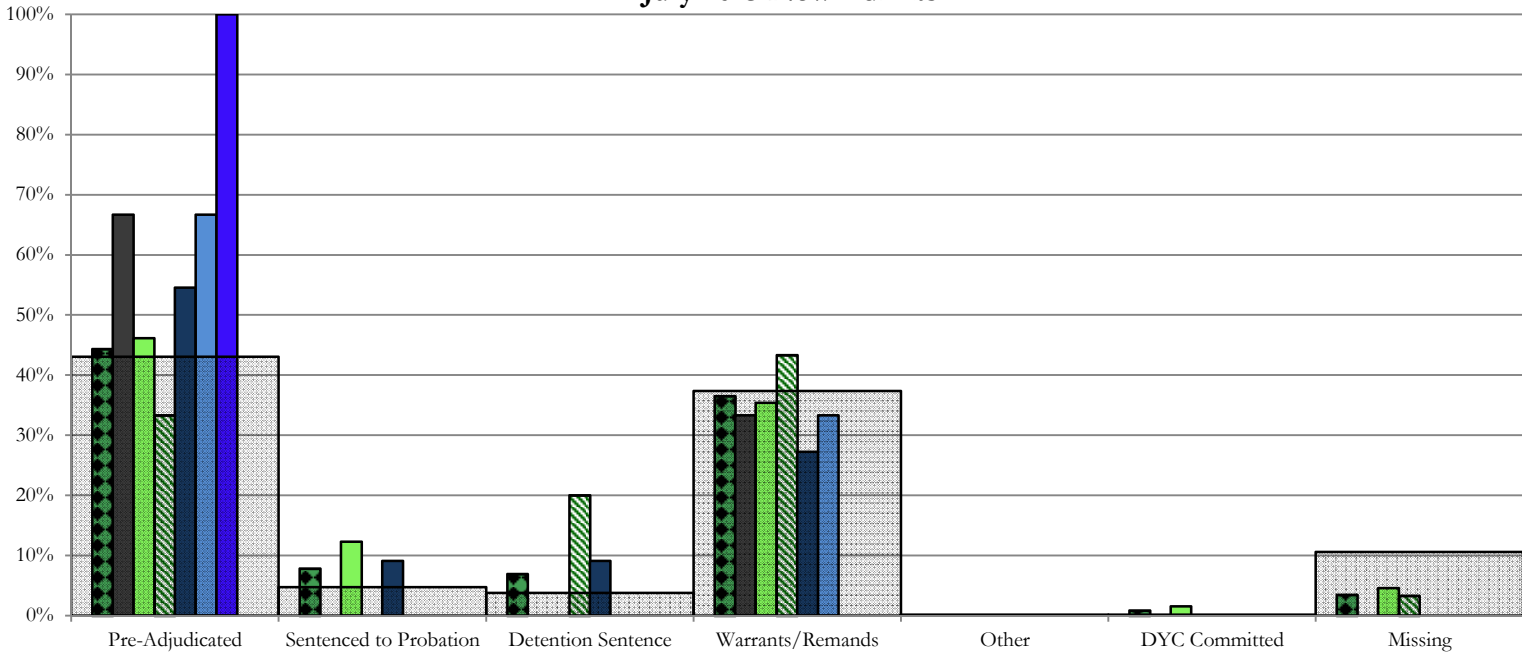


- NORTHEAST REGION, 142 New Admits
- 8th JD, 42 New Admits
- 13th JD, 13 New Admits
- 17th JD, 39 New Admits
- 19th JD, 30 New Admits
- 20th JD, 18 New Admits
- STATEWIDE, 527 New Admits

Southern Region

SB94 Reason Detained by Judicial District

July 2015 New Admits

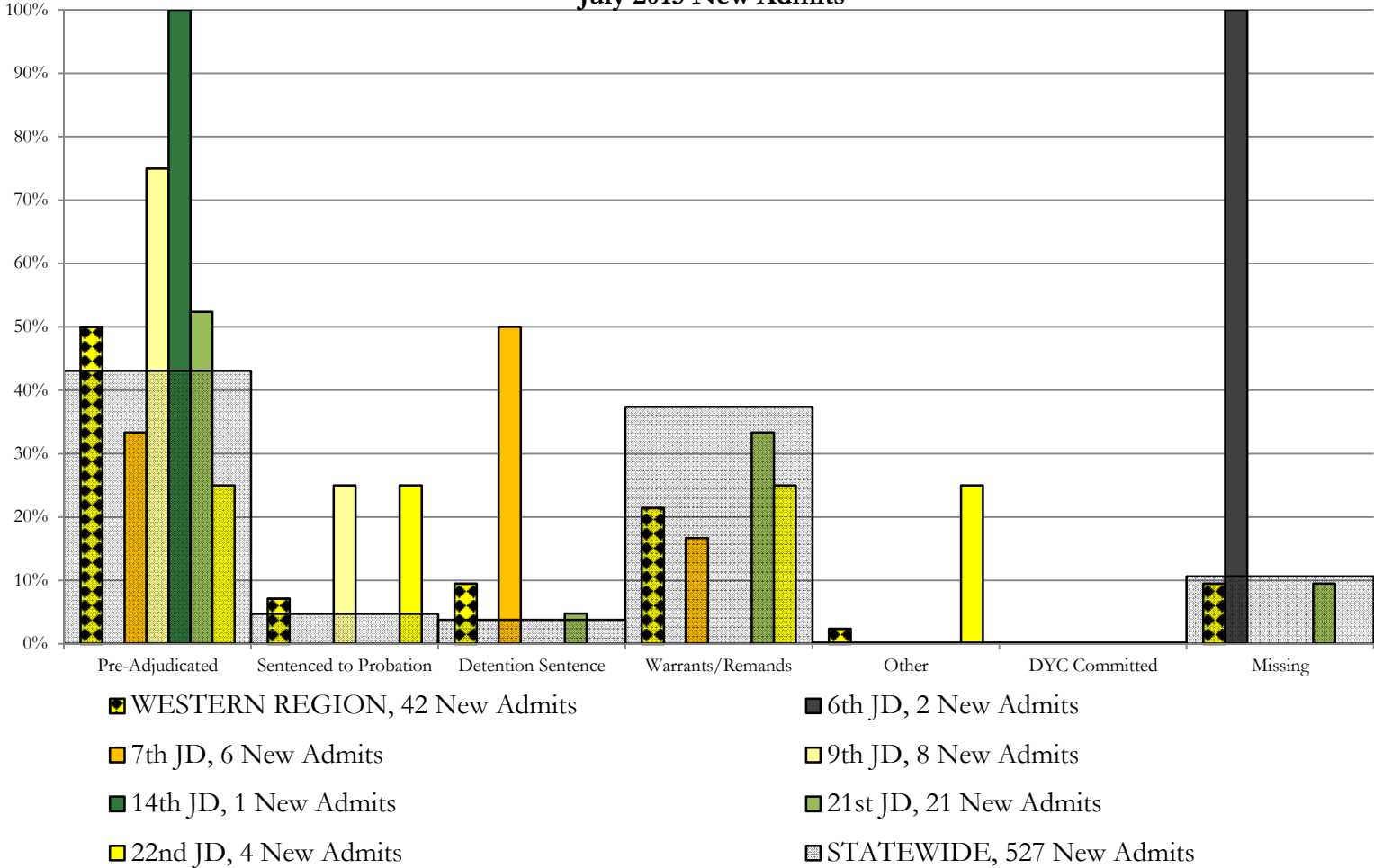


- SOUTHERN REGION, 115 New Admits
- 4th JD, 65 New Admits
- 11th JD, 11 New Admits
- 15th JD, 1 New Admits
- STATEWIDE, 527 New Admits
- 3rd JD, 3 New Admits
- 10th JD, 30 New Admits
- 12th JD, 3 New Admits
- 16th JD, 2 New Admits

Western Region

SB94 Reason Detained by Judicial District

July 2015 New Admits



July 2015 SB94 Supplemental Report

DYC Detention Maximum Youth Served by Judicial District¹

| Region | JD | Detention Capacity | Detention ADP | | Maximum Youth Served on a Single Day ^{2,3} | | | |
|-----------------------------------|------|--------------------|---------------|--------------|-----------------------------------------------------|-------------------------|-----------------|-------------------------|
| | | | July 2015 | YTD | July 2015 | | YTD | |
| | | | | | Number of Youth | % of Detention Capacity | Number of Youth | % of Detention Capacity |
| <i>Central Region</i> | | | | | | | | |
| | 1st | 37 | 22.0 | 22.0 | 27 | 73.0% | 27 | 73.0% |
| | 2nd | 64 | 57.7 | 57.7 | 65 | 101.6% | 65 | 101.6% |
| | 5th | 4 | 3.6 | 3.6 | 6 | 150.0% | 6 | 150.0% |
| | 18th | 61 | 41.2 | 41.2 | 51 | 83.6% | 51 | 83.6% |
| Central Region | | 166 | 124.6 | 124.6 | 138 | 83.1% | 138 | 83.1% |
| <i>Northeast Region</i> | | | | | | | | |
| | 8th | 21 | 17.7 | 17.7 | 23 | 109.5% | 23 | 109.5% |
| | 13th | 5 | 6.9 | 6.9 | 10 | 200.0% | 10 | 200.0% |
| | 17th | 30 | 25.8 | 25.8 | 31 | 103.3% | 31 | 103.3% |
| | 19th | 25 | 22.5 | 22.5 | 31 | 124.0% | 31 | 124.0% |
| | 20th | 13 | 4.6 | 4.6 | 8 | 61.5% | 8 | 61.5% |
| Northeast Region | | 94 | 77.5 | 77.5 | 96 | 102.1% | 96 | 102.1% |
| <i>Southern Region</i> | | | | | | | | |
| | 3rd | 2 | 1.3 | 1.3 | 3 | 150.0% | 3 | 150.0% |
| | 4th | 51 | 35.9 | 35.9 | 47 | 92.2% | 47 | 92.2% |
| | 10th | 13 | 16.0 | 16.0 | 19 | 146.2% | 19 | 146.2% |
| | 11th | 8 | 3.0 | 3.0 | 6 | 75.0% | 6 | 75.0% |
| | 12th | 4 | 2.1 | 2.1 | 4 | 100.0% | 4 | 100.0% |
| | 15th | 2 | 1.7 | 1.7 | 2 | 100.0% | 2 | 100.0% |
| | 16th | 3 | 0.1 | 0.1 | 1 | 33.3% | 1 | 33.3% |
| Southern Region | | 83 | 60.2 | 60.2 | 68 | 81.9% | 68 | 81.9% |
| <i>Western Region</i> | | | | | | | | |
| | 6th | 5 | 1.1 | 1.1 | 2 | 40.0% | 2 | 40.0% |
| | 7th | 7 | 3.4 | 3.4 | 5 | 71.4% | 5 | 71.4% |
| | 9th | 6 | 4.6 | 4.6 | 7 | 116.7% | 7 | 116.7% |
| | 14th | 3 | 1.0 | 1.0 | 2 | 66.7% | 2 | 66.7% |
| | 21st | 14 | 10.2 | 10.2 | 14 | 100.0% | 14 | 100.0% |
| | 22nd | 4 | 2.1 | 2.1 | 4 | 100.0% | 4 | 100.0% |
| Western Region | | 39 | 22.4 | 22.4 | 29 | 74.4% | 29 | 74.4% |
| <i>Missing JD or Multiple JDs</i> | | | 0.3 | 0.3 | | | | |
| Statewide | | 382 | 285.1 | 285.1 | 308 | 80.6% | 308 | 80.6% |

¹ Maximum youth served is the highest number of youth in detention on a single day during the month or fiscal year.

² Regional figures are not the sum of judicial districts, but represent the maximum count on one day for the entire region.

³ State figures are not the sum of regional figures, but represent the maximum count on one day for the entire state.

July 2015 SB94 Supplemental Report

SB94 Community ADP by Judicial District

| Region | JD | Committed | | ICJ | | Municipal | | Pre-Adjudicated | | Sentenced | | VCO | | Total | |
|-------------------------|------|-------------|-------------|------------|------------|-------------|-------------|-----------------|---------------|--------------|--------------|-------------|-------------|---------------|---------------|
| | | July | YTD | July | YTD | July | YTD | July | YTD | July | YTD | July | YTD | July | YTD |
| <i>Central Region</i> | | | | | | | | | | | | | | | |
| | 1st | 0.0 | 0.0 | 0.0 | 0.0 | 0.0 | 0.0 | 180.2 | 180.2 | 9.5 | 9.5 | 0.0 | 0.0 | 189.8 | 189.8 |
| | 2nd | 8.9 | 8.9 | 4.0 | 4.0 | 0.0 | 0.0 | 271.8 | 271.8 | 70.0 | 70.0 | 0.0 | 0.0 | 354.8 | 354.8 |
| | 5th | 0.0 | 0.0 | 0.0 | 0.0 | 0.0 | 0.0 | 12.0 | 12.0 | 31.0 | 31.0 | 0.0 | 0.0 | 43.0 | 43.0 |
| | 18th | 0.6 | 0.6 | 0.0 | 0.0 | 0.0 | 0.0 | 274.8 | 274.8 | 35.2 | 35.2 | 0.0 | 0.0 | 310.5 | 310.5 |
| Central Total | | 9.5 | 9.5 | 4.0 | 4.0 | 0.0 | 0.0 | 738.8 | 738.8 | 145.7 | 145.7 | 0.0 | 0.0 | 898.0 | 898.0 |
| <i>Northeast Region</i> | | | | | | | | | | | | | | | |
| | 8th | 0.0 | 0.0 | 0.0 | 0.0 | 0.0 | 0.0 | 45.6 | 45.6 | 15.2 | 15.2 | 0.0 | 0.0 | 60.7 | 60.7 |
| | 13th | 0.0 | 0.0 | 0.0 | 0.0 | 0.0 | 0.0 | 15.6 | 15.6 | 19.5 | 19.5 | 4.0 | 4.0 | 39.2 | 39.2 |
| | 17th | 0.9 | 0.9 | 0.0 | 0.0 | 1.0 | 1.0 | 127.9 | 127.9 | 27.8 | 27.8 | 0.0 | 0.0 | 157.7 | 157.7 |
| | 19th | 0.1 | 0.1 | 0.0 | 0.0 | 0.0 | 0.0 | 58.7 | 58.7 | 37.6 | 37.6 | 0.0 | 0.0 | 96.5 | 96.5 |
| | 20th | 0.0 | 0.0 | 0.0 | 0.0 | 0.0 | 0.0 | 83.8 | 83.8 | 64.1 | 64.1 | 0.0 | 0.0 | 148.0 | 148.0 |
| Northeast Total | | 1.1 | 1.1 | 0.0 | 0.0 | 1.0 | 1.0 | 331.7 | 331.7 | 164.3 | 164.3 | 4.0 | 4.0 | 502.0 | 502.0 |
| <i>Southern Region</i> | | | | | | | | | | | | | | | |
| | 3rd | 0.4 | 0.4 | 0.0 | 0.0 | 0.0 | 0.0 | 3.3 | 3.3 | 4.5 | 4.5 | 1.8 | 1.8 | 10.0 | 10.0 |
| | 4th | 1.0 | 1.0 | 0.0 | 0.0 | 2.0 | 2.0 | 155.8 | 155.8 | 100.0 | 100.0 | 1.1 | 1.1 | 259.8 | 259.8 |
| | 10th | 0.0 | 0.0 | 0.0 | 0.0 | 31.6 | 31.6 | 17.5 | 17.5 | 15.5 | 15.5 | 8.2 | 8.2 | 72.7 | 72.7 |
| | 11th | 0.0 | 0.0 | 0.0 | 0.0 | 0.0 | 0.0 | 16.6 | 16.6 | 24.7 | 24.7 | 0.0 | 0.0 | 41.3 | 41.3 |
| | 12th | 0.0 | 0.0 | 0.0 | 0.0 | 0.0 | 0.0 | 8.6 | 8.6 | 5.6 | 5.6 | 0.0 | 0.0 | 14.2 | 14.2 |
| | 15th | 0.0 | 0.0 | 0.0 | 0.0 | 0.0 | 0.0 | 2.0 | 2.0 | 2.3 | 2.3 | 4.0 | 4.0 | 8.3 | 8.3 |
| | 16th | 0.0 | 0.0 | 0.0 | 0.0 | 0.0 | 0.0 | 4.0 | 4.0 | 15.0 | 15.0 | 0.0 | 0.0 | 19.0 | 19.0 |
| Southern Total | | 1.4 | 1.4 | 0.0 | 0.0 | 33.6 | 33.6 | 207.8 | 207.8 | 167.5 | 167.5 | 15.1 | 15.1 | 425.4 | 425.4 |
| <i>Western Region</i> | | | | | | | | | | | | | | | |
| | 6th | 0.0 | 0.0 | 0.0 | 0.0 | 0.0 | 0.0 | 8.3 | 8.3 | 0.0 | 0.0 | 1.0 | 1.0 | 9.3 | 9.3 |
| | 7th | 0.0 | 0.0 | 0.0 | 0.0 | 0.1 | 0.1 | 14.9 | 14.9 | 13.3 | 13.3 | 0.0 | 0.0 | 28.3 | 28.3 |
| | 9th | 0.0 | 0.0 | 0.0 | 0.0 | 0.0 | 0.0 | 9.9 | 9.9 | 3.5 | 3.5 | 0.0 | 0.0 | 13.4 | 13.4 |
| | 14th | 0.0 | 0.0 | 0.0 | 0.0 | 0.0 | 0.0 | 14.9 | 14.9 | 6.2 | 6.2 | 0.0 | 0.0 | 21.1 | 21.1 |
| | 21st | 0.0 | 0.0 | 0.0 | 0.0 | 0.0 | 0.0 | 40.3 | 40.3 | 10.0 | 10.0 | 0.0 | 0.0 | 50.3 | 50.3 |
| | 22nd | 0.0 | 0.0 | 0.0 | 0.0 | 0.0 | 0.0 | 5.9 | 5.9 | 1.7 | 1.7 | 0.0 | 0.0 | 7.6 | 7.6 |
| Western Total | | 0.0 | 0.0 | 0.0 | 0.0 | 0.1 | 0.1 | 94.2 | 94.2 | 34.6 | 34.6 | 1.0 | 1.0 | 130.0 | 130.0 |
| Statewide Total | | 12.0 | 12.0 | 4.0 | 4.0 | 34.7 | 34.7 | 1372.5 | 1372.5 | 512.1 | 512.1 | 20.1 | 20.1 | 1955.3 | 1955.3 |