

# June 2015 FY 2014-2015 SB94 JDSAG SUPPLEMENTAL REPORT

---

Prepared by the Division of Youth Corrections (DYC)  
Research and Evaluation Unit  
July 23, 2015



**COLORADO**

**Office of Children,  
Youth & Families**

Division of Youth Corrections

# June 2015 SB94 Supplemental Report

## DYC Commitment ADP & New Commitments by Judicial District

Region	JD <sup>1</sup>	2015 Population Estimates <sup>2</sup>	ADP <sup>3</sup>		New Commitments		
			June 2015	YTD	June 2015	YTD	YTD Rate <sup>4</sup>
<i>Central Region</i>							
	1st	54,562	69.1	68.9	4	39	7.1
	2nd	58,395	143.7	147.7	6	65	11.1
	5th	10,073	9.1	8.3	2	7	6.9
	18th	115,459	85.0	90.5	5	48	4.2
<b>Central Total</b>		<b>238,489</b>	<b>306.9</b>	<b>315.4</b>	<b>17</b>	<b>159</b>	<b>6.7</b>
<i>Northeast Region</i>							
	8th	31,146	37.2	36.9	2	24	7.7
	13th	8,509	8.0	13.5	0	4	4.7
	17th	66,724	93.6	85.4	0	62	9.3
	19th	34,214	49.1	54.2	5	42	12.3
	20th	31,597	11.7	9.8	2	7	2.2
<b>Northeast Total</b>		<b>172,190</b>	<b>199.6</b>	<b>199.8</b>	<b>9</b>	<b>139</b>	<b>8.1</b>
<i>Southern Region</i>							
	3rd	1,993	2.0	2.5	0	2	10.0
	4th	79,018	101.9	106.2	1	41	5.2
	10th	18,161	37.4	27.3	2	24	13.2
	11th	7,322	6.9	10.0	2	6	8.2
	12th	5,216	5.9	6.5	0	1	1.9
	15th	2,182	1.0	1.9	0	0	0.0
	16th	2,902	0.3	2.6	1	2	6.9
<b>Southern Total</b>		<b>116,794</b>	<b>155.4</b>	<b>157.0</b>	<b>6</b>	<b>76</b>	<b>6.5</b>
<i>Western Region</i>							
	6th	6,346	16.2	14.2	0	7	11.0
	7th	10,564	10.3	9.1	2	6	5.7
	9th	9,448	5.5	8.3	0	2	2.1
	14th	5,479	3.0	1.8	0	2	3.7
	21st	15,437	31.2	28.3	2	16	10.4
	22nd	3,013	6.0	6.1	0	3	10.0
<b>Western Total</b>		<b>50,287</b>	<b>72.2</b>	<b>67.9</b>	<b>4</b>	<b>36</b>	<b>7.2</b>
<b>Statewide Total</b>		<b>577,760</b>	<b>734.1</b>	<b>740.0</b>	<b>36</b>	<b>410</b>	<b>7.1</b>

<sup>1</sup> JD represents the judicial district in which the client was committed. Regional totals are a sum of their respective judicial districts. Regional totals reported here may differ slightly from those reported in the Monthly Population Report, where region is defined by active caseloads.

<sup>2</sup> Source: DOLA 2015 Estimates

<sup>3</sup> Due to rounding, totals shown may not be an exact sum of the subtotals.

<sup>4</sup> Per 10,000 youth in the population

## June 2015 SB94 Supplemental Report

### DYC Detention ADP and New Detention Admissions by Judicial District

Region	JD	2015 Population Estimates <sup>1</sup>	ADP		New Admits		YTD New Admit Rate <sup>2</sup>
			June 2015	YTD	June 2015	YTD	
<i>Central Region</i>							
	1st	54,562	26.8	26.0	56	691	126.6
	2nd	58,395	60.3	53.2	103	1,134	194.2
	5th	10,073	4.1	2.6	4	35	34.7
	18th	115,459	43.7	47.6	86	1,248	108.1
<b>Central Total</b>		<b>238,489</b>	<b>134.9</b>	<b>129.4</b>	<b>249</b>	<b>3,108</b>	<b>130.3</b>
<i>Northeast Region</i>							
	8th	31,146	22.2	17.6	50	490	157.3
	13th	8,509	3.0	2.2	8	88	103.4
	17th	66,724	20.1	21.7	54	544	81.5
	19th	34,214	27.4	25.0	39	607	177.4
	20th	31,597	4.0	5.9	21	321	101.6
<b>Northeast Total</b>		<b>172,190</b>	<b>76.6</b>	<b>72.5</b>	<b>172</b>	<b>2,050</b>	<b>119.1</b>
<i>Southern Region</i>							
	3rd	1,993	1.0	0.9	0	20	100.4
	4th	79,018	38.7	36.5	61	774	98.0
	10th	18,161	13.8	12.0	47	419	230.7
	11th	7,322	2.6	2.6	10	131	178.9
	12th	5,216	0.9	1.4	4	48	92.0
	15th	2,182	0.9	0.9	2	28	128.3
	16th	2,902	1.0	1.6	2	21	72.4
<b>Southern Total</b>		<b>116,794</b>	<b>59.0</b>	<b>55.8</b>	<b>126</b>	<b>1,441</b>	<b>123.4</b>
<i>Western Region</i>							
	6th	6,346	1.4	2.3	4	49	77.2
	7th	10,564	2.3	4.4	5	57	54.0
	9th	9,448	2.3	2.5	3	45	47.6
	14th	5,479	1.0	0.9	0	25	45.6
	21st	15,437	8.7	10.8	16	216	139.9
	22nd	3,013	0.8	1.7	5	33	109.5
<b>Western Total</b>		<b>50,287</b>	<b>16.6</b>	<b>22.7</b>	<b>33</b>	<b>425</b>	<b>84.5</b>
<i>Missing JD or Multiple JDs</i>			<i>1.3</i>	<i>1.5</i>			
<b>Statewide Total</b>		<b>577,760</b>	<b>288.4</b>	<b>281.8</b>	<b>580</b>	<b>7,024</b>	<b>121.6</b>

<sup>1</sup> Source: DOLA 2015 Estimates

<sup>2</sup> Per 10,000 youth in the population

# June 2015 SB94 Supplemental Report

## DYC Detention LOS by Judicial District

Region	JD	YTD Detention Releases	YTD LOS (days)	LOS (days) Compared to State AVG
<i>Central Region</i>				
	1st	688	13.1	-1.5
	2nd	1,117	17.0	2.3
	5th	33	27.1	12.5
	18th	1,245	13.2	-1.4
<b>Central Total</b>		<b>3,083</b>	<b>14.7</b>	<b>0.1</b>
<i>Northeast Region</i>				
	8th	478	12.5	-2.2
	13th	86	9.0	-5.7
	17th	543	14.5	-0.2
	19th	609	14.1	-0.6
	20th	319	6.0	-8.6
<b>Northeast Total</b>		<b>2,035</b>	<b>12.3</b>	<b>-2.3</b>
<i>Southern Region</i>				
	3rd	20	13.9	-0.8
	4th	756	16.1	1.5
	10th	413	12.2	-2.4
	11th	124	7.0	-7.7
	12th	44	10.5	-4.1
	15th	28	11.7	-3.0
	16th	23	24.8	10.1
<b>Southern Total</b>		<b>1,408</b>	<b>14.0</b>	<b>-0.6</b>
<i>Western Region</i>				
	6th	50	16.5	1.9
	7th	52	26.8	12.2
	9th	43	18.2	3.6
	14th	24	11.5	-3.1
	21st	210	14.9	0.3
	22nd	33	18.4	3.7
<b>Western Total</b>		<b>412</b>	<b>17.0</b>	<b>2.4</b>
<b>Statewide Total</b>		<b>6,968</b>	<b>14.6</b>	<b>-</b>

## June 2015 SB 94 Supplemental Report

### YTD DYC Detention ADP & Ethnicity by Judicial District

Region	JD	Anglo-American		African-American		Hispanic / Latino		Native-American		Asian-American		Other		TOTAL	
		ADP	%	ADP	%	ADP	%	ADP	%	ADP	%	ADP	%	ADP	%
<b>Central</b>															
	1st	13.7	52.7%	2.1	8.2%	8.3	32.0%	0.2	0.6%	1.6	6.0%	0.1	0.4%	26.0	100%
	2nd	6.1	11.5%	22.5	42.4%	23.1	43.5%	0.2	0.4%	0.5	1.0%	0.6	1.2%	53.2	100%
	5th	1.8	69.7%	0.0	1.3%	0.8	29.0%	0.0	0.0%	0.0	0.0%	0.0	0.0%	2.6	100%
	18th	16.8	35.3%	19.4	40.9%	10.3	21.6%	0.3	0.5%	0.4	0.9%	0.3	0.7%	47.6	100%
<b>Central Total</b>		<b>38.5</b>	<b>42.3%</b>	<b>44.2</b>	<b>23.2%</b>	<b>42.5</b>	<b>31.6%</b>	<b>0.6</b>	<b>0.4%</b>	<b>2.5</b>	<b>2.0%</b>	<b>1.1</b>	<b>0.6%</b>	<b>129.4</b>	<b>100%</b>
<b>Northeast</b>															
	8th	10.8	61.3%	1.0	5.7%	4.8	27.4%	0.17	1.0%	0.0	0.0%	0.8	4.6%	17.6	100%
	13th	1.1	50.6%	0.0	0.0%	1.0	45.2%	0.0	0.0%	0.0	0.5%	0.08	3.7%	2.2	100%
	17th	5.9	27.3%	3.7	16.9%	11.6	53.5%	0.3	1.4%	0.17	0.8%	0.0	0.1%	21.7	100%
	19th	6.6	26.3%	0.4	1.6%	17.4	69.4%	0.3	1.2%	0.3	1.2%	0.1	0.3%	25.0	100%
	20th	2.5	41.9%	0.7	12.2%	2.5	42.9%	0.0	0.2%	0.0	0.0%	0.2	2.8%	5.9	100%
<b>Northeast Total</b>		<b>26.9</b>	<b>41.5%</b>	<b>5.8</b>	<b>7.3%</b>	<b>37.3</b>	<b>47.7%</b>	<b>0.8</b>	<b>0.7%</b>	<b>0.5</b>	<b>0.5%</b>	<b>1.2</b>	<b>2.3%</b>	<b>72.4</b>	<b>100%</b>
<b>Southern</b>															
	3rd	0.3	37.9%	0.0	0.0%	0.6	62%	0.0	0.0%	0.0	0.0%	0.0	0.0%	0.9	100%
	4th	15.6	42.8%	10.7	29.5%	9.0	24.6%	0.6	1.6%	0.2	0.4%	0.4	1.1%	36.5	100%
	10th	3.3	27.9%	0.9	7.2%	7.4	61.7%	0.0	0.0%	0.0	0.0%	0.4	3.2%	12.0	100%
	11th	1.9	70.8%	0.5	17.4%	0.2	8.6%	0.08	3.0%	0.0	0.0%	0.0	0.2%	2.6	100%
	12th	0.6	41.8%	0.01	0.5%	0.7	52.9%	0.0	0.0%	0.0	0.0%	0.1	4.8%	1.4	100%
	15th	0.7	71.8%	0.0	0.0%	0.2	23.2%	0.05	5.0%	0.0	0.0%	0.0	0.0%	0.9	100%
	16th	0.2	15.6%	0.0	0.0%	1.3	84.4%	0.0	0.0%	0.0	0.0%	0.0	0.0%	1.6	100%
<b>Southern Total</b>		<b>22.6</b>	<b>44.1%</b>	<b>12.1</b>	<b>7.8%</b>	<b>19.4</b>	<b>45.4%</b>	<b>0.7</b>	<b>1.4%</b>	<b>0.2</b>	<b>0.1%</b>	<b>0.8</b>	<b>1.3%</b>	<b>55.8</b>	<b>100%</b>
<b>Western</b>															
	6th	1.7	74.2%	0.0	0.0%	0.1	5.9%	0.4	19.3%	0.0	0.0%	0.0	0.6%	2.3	100%
	7th	3.0	67.7%	0.0	0.0%	1.1	24.9%	0.3	7.3%	0.0	0.0%	0.0	0.0%	4.4	100%
	9th	1.2	48.9%	0.1	4.8%	1.2	46.0%	0.0	0.2%	0.0	0.0%	0.0	0.0%	2.5	100%
	14th	0.8	84%	0.0	0.0%	0.14	15.7%	0.0	0.0%	0.0	0.0%	0.0	0.0%	0.9	100%
	21st	8.5	78.4%	0.01	0.1%	2.2	20.3%	0.01	0.1%	0.0	0.0%	0.1	1.2%	10.8	100%
	22nd	1.4	83.4%	0.1	6.1%	0.0	0.6%	0.2	9.0%	0.0	0.0%	0.0	1.0%	1.7	100%
<b>Western Total</b>		<b>16.6</b>	<b>72.8%</b>	<b>0.2</b>	<b>1.8%</b>	<b>4.8</b>	<b>18.9%</b>	<b>0.9</b>	<b>6.0%</b>	<b>0.0</b>	<b>0.0%</b>	<b>0.2</b>	<b>0.5%</b>	<b>22.7</b>	<b>100%</b>
Missing JD Data		0.3		0.3		0.9		0.0		0.0		0.0		1.5	
<b>Statewide Total</b>		<b>105.0</b>	<b>37.2%</b>	<b>62.5</b>	<b>22.2%</b>	<b>104.9</b>	<b>37.2%</b>	<b>3.1</b>	<b>1.1%</b>	<b>3.1</b>	<b>1.1%</b>	<b>3.3</b>	<b>1.2%</b>	<b>281.8</b>	<b>100%</b>

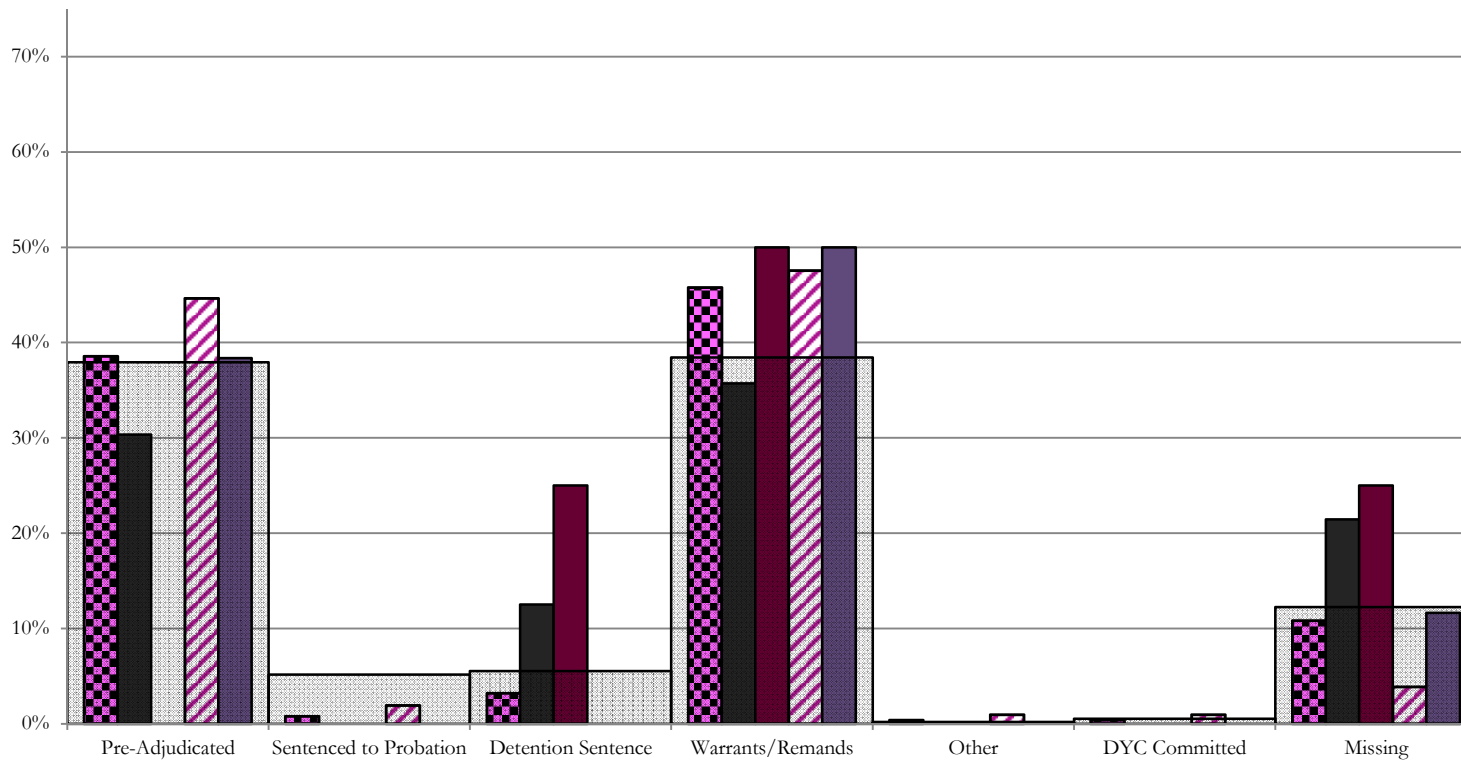
**June 2015**  
**SB94 JDSAG Supplemental Report**  
**SB94 Reason Detained (RD) by Judicial District**

Region	JD	Pre-Adjudicated				Probation Hold				Detention Sentence				Warrants/Remands				Other				DYC Committed				Missing		
		Felony		Misdemeanor		Technical Violator		New Charges		Detention Sentence (up to 45 days)		Valid Court Order (VCO) Truancy		Failure to Appear (FTA)		Failure to Comply (FTC)		Interstate Compact on Juveniles (ICJ) Hold		Immigration Hold		Institutional		Parole		Missing		
	Monthly New Admits	#	%	#	%	#	%	#	%	#	%	#	%	#	%	#	%	#	%	#	%	#	%	#	%	#	%	
<i>Central Region</i>																												
	1st	56	9	16.1%	8	14.3%	0	0.0%	0	0.0%	7	12.5%	0	0.0%	6	10.7%	14	25.0%	0	0.0%	0	0.0%	0	0.0%	0	0.0%	12	21.4%
	2nd	103	40	38.8%	6	5.8%	1	1.0%	1	1.0%	0	0.0%	0	0.0%	12	11.7%	37	35.9%	1	1.0%	0	0.0%	0	0.0%	1	1.0%	4	3.9%
	5th	4	0	0.0%	0	0.0%	0	0.0%	0	0.0%	1	25.0%	0	0.0%	0	0.0%	2	50.0%	0	0.0%	0	0.0%	0	0.0%	0	0.0%	1	25.0%
	18th	86	19	22.1%	14	16.3%	0	0.0%	0	0.0%	0	0.0%	0	0.0%	13	15.1%	30	34.9%	0	0.0%	0	0.0%	0	0.0%	0	0.0%	10	11.6%
<b>Central Total</b>		<b>249</b>	<b>68</b>	<b>27.3%</b>	<b>28</b>	<b>11.2%</b>	<b>1</b>	<b>0.4%</b>	<b>1</b>	<b>0.4%</b>	<b>8</b>	<b>3.2%</b>	<b>0</b>	<b>0.0%</b>	<b>31</b>	<b>12.4%</b>	<b>83</b>	<b>33.3%</b>	<b>1</b>	<b>0.4%</b>	<b>0</b>	<b>0.0%</b>	<b>0</b>	<b>0.0%</b>	<b>1</b>	<b>0.4%</b>	<b>27</b>	<b>10.8%</b>
<i>Northeast Region</i>																												
	8th	50	10	20.0%	15	30.0%	1	2.0%	0	0.0%	1	2.0%	0	0.0%	4	8.0%	19	38.0%	0	0.0%	0	0.0%	0	0.0%	0	0.0%	0	0.0%
	13th	8	0	0.0%	0	0.0%	2	25.0%	0	0.0%	1	12.5%	0	0.0%	0	0.0%	3	37.5%	0	0.0%	0	0.0%	0	0.0%	0	0.0%	2	25.0%
	17th	54	16	29.6%	6	11.1%	0	0.0%	0	0.0%	1	1.9%	0	0.0%	6	11.1%	18	33.3%	0	0.0%	0	0.0%	1	1.9%	0	0.0%	7	13.0%
	19th	39	8	20.5%	8	20.5%	11	28.2%	0	0.0%	0	0.0%	1	2.6%	6	15.4%	5	12.8%	0	0.0%	0	0.0%	0	0.0%	0	0.0%	0	0.0%
	20th	21	1	4.8%	1	4.8%	1	4.8%	0	0.0%	1	4.8%	0	0.0%	2	9.5%	0	0.0%	0	0.0%	0	0.0%	0	0.0%	0	0.0%	15	71.4%
<b>Northeast Total</b>		<b>172</b>	<b>35</b>	<b>20.3%</b>	<b>30</b>	<b>17.4%</b>	<b>15</b>	<b>8.7%</b>	<b>0</b>	<b>0.0%</b>	<b>4</b>	<b>2.3%</b>	<b>1</b>	<b>0.6%</b>	<b>18</b>	<b>10.5%</b>	<b>45</b>	<b>26.2%</b>	<b>0</b>	<b>0.0%</b>	<b>0</b>	<b>0.0%</b>	<b>1</b>	<b>0.6%</b>	<b>0</b>	<b>0.0%</b>	<b>23</b>	<b>13.4%</b>
<i>Southern Region</i>																												
	3rd	0	0	0.0%	0	0.0%	0	0.0%	0	0.0%	0	0.0%	0	0.0%	0	0.0%	0	0.0%	0	0.0%	0	0.0%	0	0.0%	0	0.0%	0	0.0%
	4th	61	29	47.5%	5	8.2%	3	4.9%	4	6.6%	0	0.0%	2	3.3%	5	8.2%	10	16.4%	0	0.0%	0	0.0%	1	1.6%	0	0.0%	2	3.3%
	10th	47	7	14.9%	2	4.3%	1	2.1%	0	0.0%	9	19.1%	3	6.4%	8	17.0%	7	14.9%	0	0.0%	0	0.0%	0	0.0%	0	0.0%	10	21.3%
	11th	10	1	10.0%	1	10.0%	0	0.0%	0	0.0%	1	10.0%	0	0.0%	3	30.0%	1	10.0%	0	0.0%	0	0.0%	0	0.0%	0	0.0%	3	30.0%
	12th	4	0	0.0%	0	0.0%	0	0.0%	0	0.0%	0	0.0%	0	0.0%	1	25.0%	3	75.0%	0	0.0%	0	0.0%	0	0.0%	0	0.0%	0	0.0%
	15th	2	0	0.0%	0	0.0%	0	0.0%	0	0.0%	1	50.0%	0	0.0%	0	0.0%	1	50.0%	0	0.0%	0	0.0%	0	0.0%	0	0.0%	0	0.0%
	16th	2	0	0.0%	0	0.0%	0	0.0%	0	0.0%	0	0.0%	0	0.0%	0	0.0%	1	50.0%	0	0.0%	0	0.0%	0	0.0%	0	0.0%	1	50.0%
<b>Southern Total</b>		<b>126</b>	<b>37</b>	<b>29.4%</b>	<b>8</b>	<b>6.3%</b>	<b>4</b>	<b>3.2%</b>	<b>4</b>	<b>3.2%</b>	<b>11</b>	<b>8.7%</b>	<b>5</b>	<b>4.0%</b>	<b>17</b>	<b>13.5%</b>	<b>23</b>	<b>18.3%</b>	<b>0</b>	<b>0.0%</b>	<b>0</b>	<b>0.0%</b>	<b>1</b>	<b>0.8%</b>	<b>0</b>	<b>0.0%</b>	<b>16</b>	<b>12.7%</b>
<i>Western Region</i>																												
	6th	4	2	50.0%	1	25.0%	0	0.0%	0	0.0%	0	0.0%	0	0.0%	0	0.0%	0	0.0%	0	0.0%	0	0.0%	0	0.0%	0	0.0%	1	25.0%
	7th	5	1	20.0%	0	0.0%	0	0.0%	1	20.0%	2	40.0%	0	0.0%	0	0.0%	1	20.0%	0	0.0%	0	0.0%	0	0.0%	0	0.0%	0	0.0%
	9th	3	0	0.0%	0	0.0%	2	66.7%	0	0.0%	0	0.0%	0	0.0%	0	0.0%	0	0.0%	0	0.0%	0	0.0%	0	0.0%	0	0.0%	1	33.3%
	14th	0	0	0.0%	0	0.0%	0	0.0%	0	0.0%	0	0.0%	0	0.0%	0	0.0%	0	0.0%	0	0.0%	0	0.0%	0	0.0%	0	0.0%	0	0.0%
	21st	16	4	25.0%	3	18.8%	0	0.0%	0	0.0%	1	6.3%	0	0.0%	1	6.3%	4	25.0%	0	0.0%	0	0.0%	0	0.0%	0	0.0%	3	18.8%
	22nd	5	2	40.0%	1	20.0%	2	40.0%	0	0.0%	0	0.0%	0	0.0%	0	0.0%	0	0.0%	0	0.0%	0	0.0%	0	0.0%	0	0.0%	0	0.0%
<b>Western Total</b>		<b>33</b>	<b>9</b>	<b>27.3%</b>	<b>5</b>	<b>15.2%</b>	<b>4</b>	<b>12.1%</b>	<b>1</b>	<b>3.0%</b>	<b>3</b>	<b>9.1%</b>	<b>0</b>	<b>0.0%</b>	<b>1</b>	<b>3.0%</b>	<b>5</b>	<b>15.2%</b>	<b>0</b>	<b>0.0%</b>	<b>0</b>	<b>0.0%</b>	<b>0</b>	<b>0.0%</b>	<b>0</b>	<b>0.0%</b>	<b>5</b>	<b>15.2%</b>
<b>Missing JD or Multiple JDs</b>		<b>0</b>	<b>0</b>		<b>0</b>		<b>0</b>		<b>0</b>		<b>0</b>		<b>0</b>		<b>0</b>		<b>0</b>		<b>0</b>		<b>0</b>		<b>0</b>		<b>0</b>		<b>0</b>	
<b>Individual RD Totals</b>		<b>580</b>	<b>149</b>	<b>25.7%</b>	<b>71</b>	<b>12.2%</b>	<b>24</b>	<b>4.1%</b>	<b>6</b>	<b>1.0%</b>	<b>26</b>	<b>4.5%</b>	<b>6</b>	<b>1.0%</b>	<b>67</b>	<b>11.6%</b>	<b>156</b>	<b>26.9%</b>	<b>1</b>	<b>0.2%</b>	<b>0</b>	<b>0.0%</b>	<b>2</b>	<b>0.3%</b>	<b>1</b>	<b>0.2%</b>	<b>71</b>	<b>12.2%</b>
<b>Statewide Totals</b>		<b>580</b>	<b>220</b>		<b>37.9%</b>	<b>30</b>		<b>5.2%</b>		<b>32</b>		<b>5.5%</b>		<b>223</b>		<b>38.4%</b>		<b>1</b>		<b>0.0%</b>		<b>3</b>		<b>0.5%</b>		<b>71</b>	<b>12.2%</b>	

# Central Region

## SB94 Reason Detained by Judicial District

### June 2015 New Admits



■ CENTRAL REGION, 249 New Admits

■ 5th JD, 4 New Admits

■ 18th JD, 86 New Admits

■ 1st JD, 56 New Admits

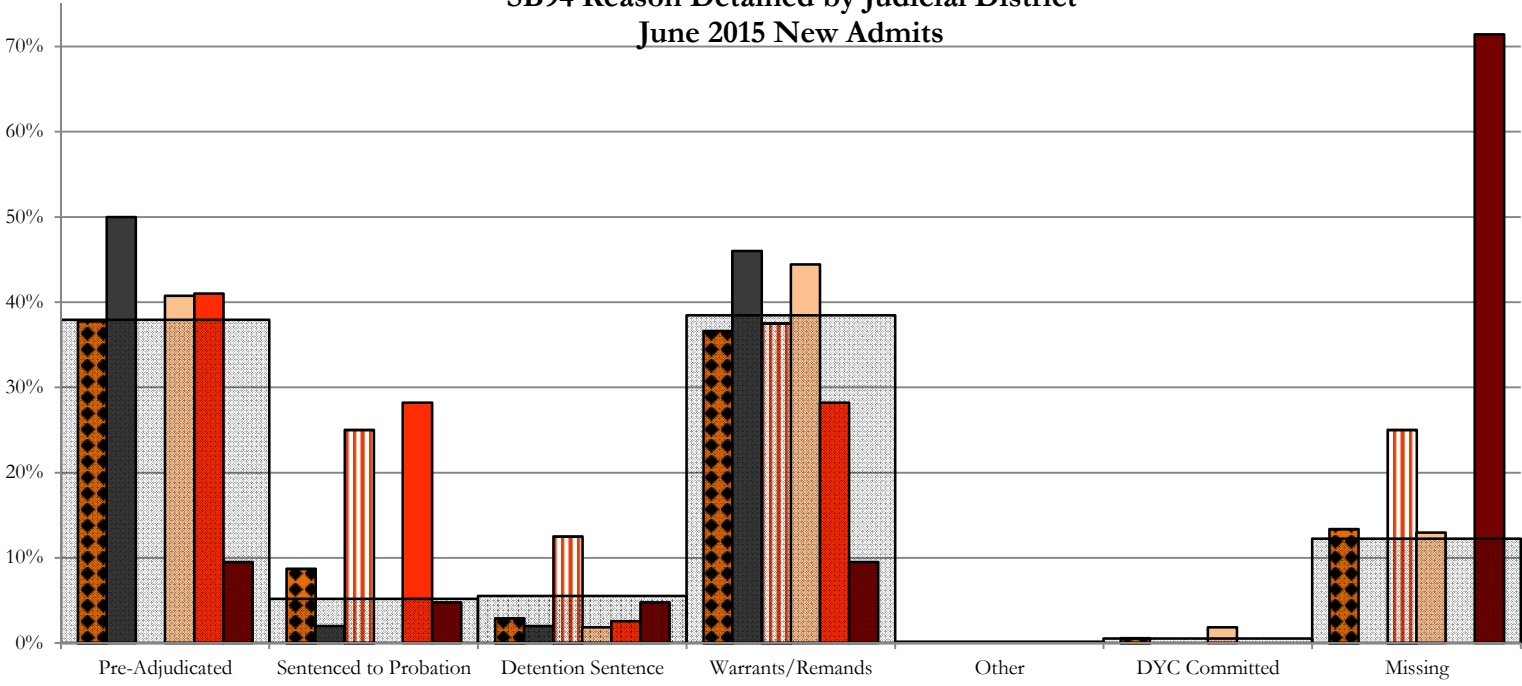
■ 2nd JD, 103 New Admits

■ STATEWIDE, 580 New Admits

# Northeast Region

## SB94 Reason Detained by Judicial District

### June 2015 New Admits



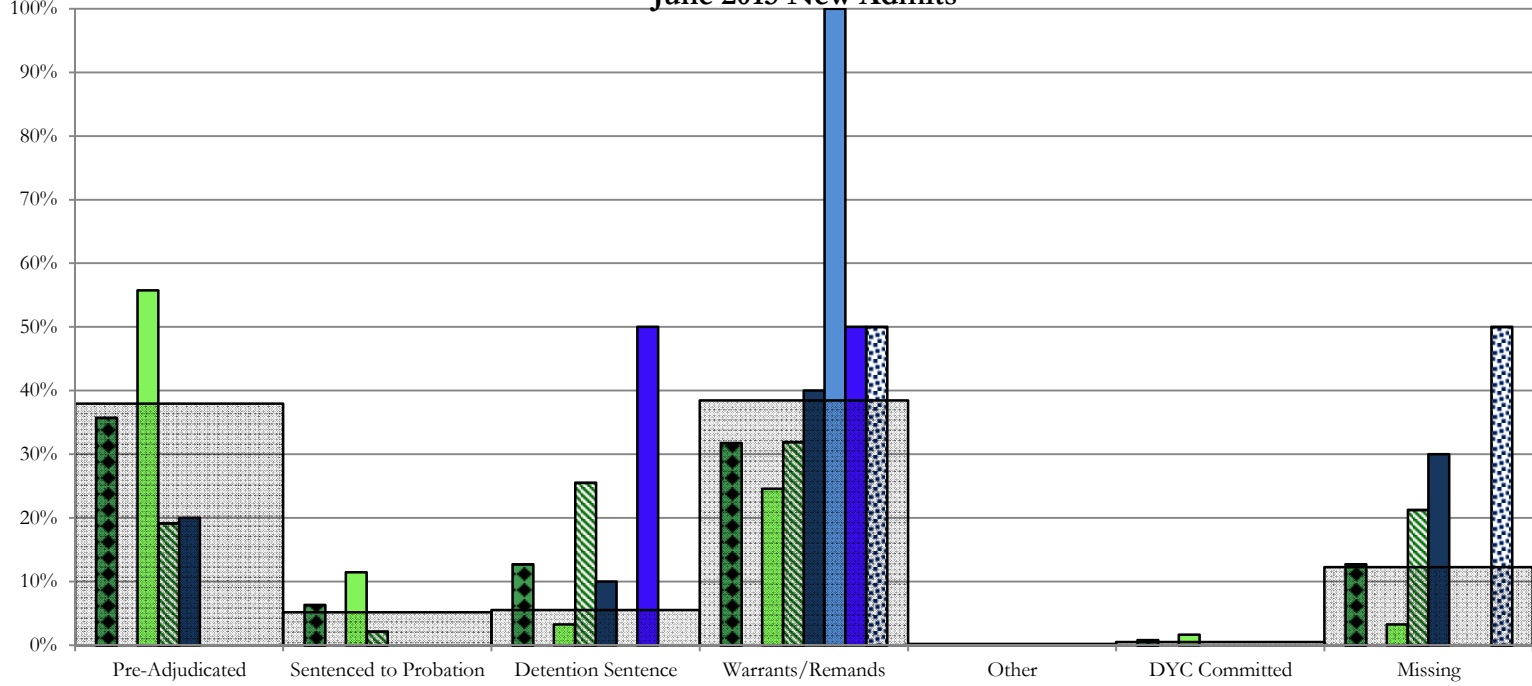
- NORTHEAST REGION, 172 New Admits
- 8th JD, 50 New Admits
- 13th JD, 8 New Admits
- 17th JD, 54 New Admits
- 19th JD, 39 New Admits
- 20th JD, 21 New Admits
- STATEWIDE, 580 New Admits



# Southern Region

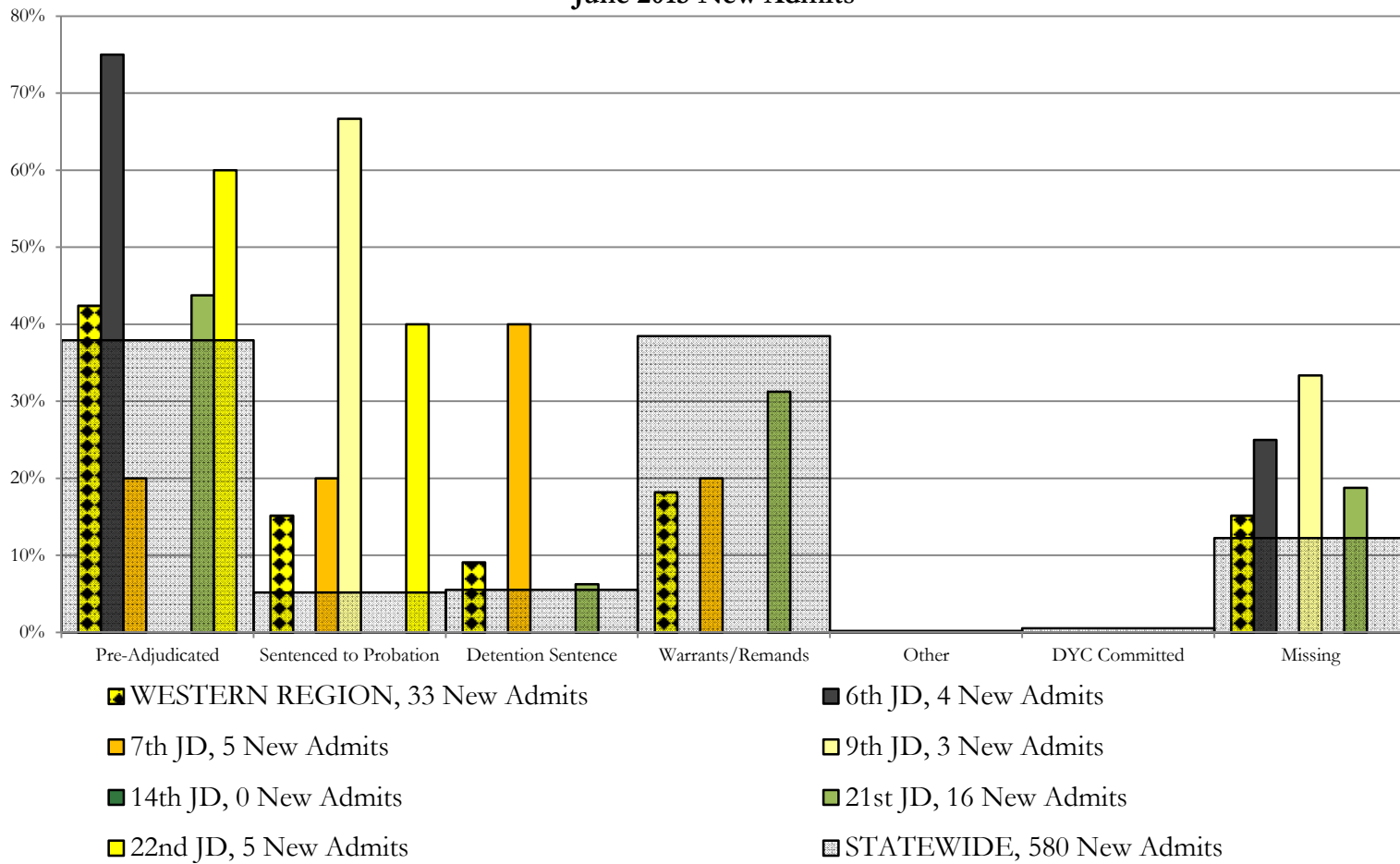
## SB94 Reason Detained by Judicial District

### June 2015 New Admits



- SOUTHERN REGION, 126 New Admits
- 4th JD, 61 New Admits
- 11th JD, 10 New Admits
- 15th JD, 2 New Admits
- STATEWIDE, 580 New Admits
- 3rd JD, 0 New Admits
- 10th JD, 47 New Admits
- 12th JD, 4 New Admits
- 16th JD, 2 New Admits

## Western Region SB94 Reason Detained by Judicial District June 2015 New Admits



## June 2015 SB94 JDSAG Supplemental Report

SB94 Reason Detained (RD) by Judicial District Year to Date

Region	JD	Pre-Adjudicated				Sentenced to Probation				Detention Sentence								Warrants/Remands				Other				DYC Committed				Missing			
		Felony		Misdemeanor		Technical Violator		New Charges		Probation Sentence		Detention Sentence		Valid Court Order (VCO) Truancy		Awaiting DSS (Social Services) Placement		Failure to Appear (FTA)		Failure to Comply (FTC)		Interstate Compact on Juveniles (ICJ) Hold		Immigration Hold		Institutional		Parole		Missing			
Year to Date New Admits	#	%	#	%	#	%	#	%	#	%	#	%	#	%	#	%	#	%	#	%	#	%	#	%	#	%	#	%	#	%			
<b>Central Region</b>																																	
1st	691	129	18.7%	80	11.6%	10	1.4%	0	0.0%	0	0.0%	76	11.0%	2	0.3%	0	0.0%	104	15.1%	271	39.2%	0	0.0%	0	0.0%	0	0.0%	0	0.0%	0	0.0%	19	2.7%
2nd	1,134	398	35.1%	111	9.8%	29	2.6%	5	0.4%	0	0.0%	3	0.3%	0	0.0%	0	0.0%	119	10.5%	380	33.5%	15	1.3%	0	0.0%	3	0.3%	5	0.4%	66	5.8%		
5th	35	7	20.0%	5	14.3%	0	0.0%	0	0.0%	0	0.0%	4	11.4%	0	0.0%	0	0.0%	6	17.1%	12	34.3%	0	0.0%	0	0.0%	0	0.0%	0	0.0%	1	2.9%		
18th	1,248	264	21.2%	305	24.4%	0	0.0%	0	0.0%	0	0.0%	39	3.1%	0	0.0%	0	0.0%	112	9.0%	451	36.1%	9	0.7%	0	0.0%	2	0.2%	0	0.0%	66	5.3%		
<b>Central Total</b>	<b>3,108</b>	<b>798</b>	<b>25.7%</b>	<b>501</b>	<b>16.1%</b>	<b>39</b>	<b>1.3%</b>	<b>5</b>	<b>0.2%</b>	<b>0</b>	<b>0.0%</b>	<b>122</b>	<b>3.9%</b>	<b>2</b>	<b>0.1%</b>	<b>0</b>	<b>0.0%</b>	<b>341</b>	<b>11.0%</b>	<b>1114</b>	<b>35.8%</b>	<b>24</b>	<b>0.8%</b>	<b>0</b>	<b>0.0%</b>	<b>5</b>	<b>0.2%</b>	<b>5</b>	<b>0.2%</b>	<b>152</b>	<b>4.9%</b>		
<b>Northeast Region</b>																																	
8th	490	61	12.4%	74	15.1%	44	9.0%	1	0.2%	0	0.0%	13	2.7%	0	0.0%	0	0.0%	43	8.8%	253	51.6%	0	0.0%	0	0.0%	0	0.0%	0	0.0%	1	0.2%		
13th	88	21	23.9%	22	25.0%	5	5.7%	0	0.0%	0	0.0%	1	1.1%	0	0.0%	0	0.0%	0	0.0%	32	36.4%	2	2.3%	0	0.0%	0	0.0%	0	0.0%	5	5.7%		
17th	544	121	22.2%	63	11.6%	4	0.7%	1	0.2%	0	0.0%	2	0.4%	1	0.2%	0	0.0%	64	11.8%	229	42.1%	0	0.0%	0	0.0%	2	0.4%	0	0.0%	57	10.5%		
19th	607	132	21.7%	106	17.5%	161	26.5%	4	0.7%	0	0.0%	20	3.3%	52	8.6%	1	0.2%	49	8.1%	77	12.7%	0	0.0%	0	0.0%	0	0.0%	0	0.0%	5	0.8%		
20th	321	65	20.2%	55	17.1%	40	12.5%	0	0.0%	0	0.0%	56	17.4%	3	0.9%	3	0.9%	15	4.7%	50	15.6%	1	0.3%	0	0.0%	0	0.0%	0	0.0%	33	10.3%		
<b>Northeast Total</b>	<b>2,050</b>	<b>400</b>	<b>19.5%</b>	<b>320</b>	<b>15.6%</b>	<b>254</b>	<b>12.4%</b>	<b>6</b>	<b>0.3%</b>	<b>0</b>	<b>0.0%</b>	<b>92</b>	<b>4.5%</b>	<b>56</b>	<b>2.7%</b>	<b>4</b>	<b>0.2%</b>	<b>171</b>	<b>8.3%</b>	<b>641</b>	<b>31.3%</b>	<b>3</b>	<b>0.1%</b>	<b>0</b>	<b>0.0%</b>	<b>2</b>	<b>0.1%</b>	<b>0</b>	<b>0.0%</b>	<b>101</b>	<b>4.9%</b>		
<b>Southern Region</b>																																	
3rd	20	1	5.0%	11	55.0%	2	10.0%	0	0.0%	0	0.0%	0	0.0%	0	0.0%	0	0.0%	0	0.0%	6	30.0%	0	0.0%	0	0.0%	0	0.0%	0	0.0%	0	0.0%		
4th	774	220	28.4%	103	13.3%	58	7.5%	34	4.4%	1	0.1%	2	0.3%	28	3.6%	2	0.3%	65	8.4%	200	25.8%	3	0.4%	0	0.0%	36	4.7%	1	0.1%	21	2.7%		
10th	419	58	13.8%	23	5.5%	14	3.3%	1	0.2%	0	0.0%	72	17.2%	11	2.6%	0	0.0%	114	27.2%	93	22.2%	1	0.2%	0	0.0%	3	0.7%	0	0.0%	29	6.9%		
11th	131	21	16.0%	19	14.5%	2	1.5%	1	0.8%	0	0.0%	17	13.0%	1	0.8%	0	0.0%	7	5.3%	49	37.4%	0	0.0%	0	0.0%	0	0.0%	0	0.0%	14	10.7%		
12th	48	8	16.7%	7	14.6%	0	0.0%	0	0.0%	0	0.0%	4	8.3%	0	0.0%	0	0.0%	5	10.4%	21	43.8%	0	0.0%	0	0.0%	0	0.0%	0	0.0%	3	6.3%		
15th	28	4	14.3%	2	7.1%	0	0.0%	1	3.6%	0	0.0%	2	7.1%	0	0.0%	0	0.0%	3	10.7%	16	57.1%	0	0.0%	0	0.0%	0	0.0%	0	0.0%	0	0.0%		
16th	21	2	9.5%	2	9.5%	0	0.0%	0	0.0%	0	0.0%	3	14.3%	0	0.0%	0	0.0%	4	19.0%	9	42.9%	0	0.0%	0	0.0%	0	0.0%	0	0.0%	1	4.8%		
<b>Southern Total</b>	<b>1,441</b>	<b>314</b>	<b>21.8%</b>	<b>167</b>	<b>11.6%</b>	<b>76</b>	<b>5.3%</b>	<b>37</b>	<b>2.6%</b>	<b>1</b>	<b>0.1%</b>	<b>100</b>	<b>6.9%</b>	<b>40</b>	<b>2.8%</b>	<b>2</b>	<b>0.1%</b>	<b>198</b>	<b>13.7%</b>	<b>394</b>	<b>27.3%</b>	<b>4</b>	<b>0.3%</b>	<b>0</b>	<b>0.0%</b>	<b>39</b>	<b>2.7%</b>	<b>1</b>	<b>0.1%</b>	<b>68</b>	<b>4.7%</b>		
<b>Western Region</b>																																	
6th	49	14	28.6%	5	10.2%	7	14.3%	0	0.0%	0	0.0%	0	0.0%	0	0.0%	0	0.0%	0	0.0%	3	6.1%	0	0.0%	0	0.0%	0	0.0%	0	0.0%	20	40.8%		
7th	57	19	33.3%	2	3.5%	5	8.8%	3	5.3%	0	0.0%	7	12.3%	0	0.0%	0	0.0%	3	5.3%	18	31.6%	0	0.0%	0	0.0%	0	0.0%	0	0.0%	0	0.0%		
9th	45	12	26.7%	8	17.8%	12	26.7%	1	2.2%	0	0.0%	1	2.2%	0	0.0%	0	0.0%	0	0.0%	5	11.1%	0	0.0%	0	0.0%	0	0.0%	0	0.0%	6	13.3%		
14th	25	6	24.0%	8	32.0%	0	0.0%	0	0.0%	0	0.0%	0	0.0%	2	8.0%	0	0.0%	0	0.0%	8	32.0%	0	0.0%	0	0.0%	0	0.0%	0	0.0%	1	4.0%		
21st	216	84	38.9%	43	19.9%	4	1.9%	0	0.0%	0	0.0%	16	7.4%	0	0.0%	0	0.0%	14	6.5%	46	21.3%	0	0.0%	0	0.0%	0	0.0%	0	0.0%	9	4.2%		
22nd	33	10	30.3%	3	9.1%	4	12.1%	1	3.0%	0	0.0%	4	12.1%	0	0.0%	0	0.0%	1	3.0%	8	24.2%	0	0.0%	0	0.0%	0	0.0%	0	0.0%	2	6.1%		
<b>Western Total</b>	<b>425</b>	<b>145</b>	<b>34.1%</b>	<b>69</b>	<b>16.2%</b>	<b>32</b>	<b>7.5%</b>	<b>5</b>	<b>1.2%</b>	<b>0</b>	<b>0.0%</b>	<b>28</b>	<b>6.6%</b>	<b>2</b>	<b>0.5%</b>	<b>0</b>	<b>0.0%</b>	<b>18</b>	<b>4.2%</b>	<b>88</b>	<b>20.7%</b>	<b>0</b>	<b>0.0%</b>	<b>0</b>	<b>0.0%</b>	<b>0</b>	<b>0.0%</b>	<b>0</b>	<b>0.0%</b>	<b>38</b>	<b>8.9%</b>		
<b>Individual RD Totals</b>	<b>7,024</b>	<b>1657</b>	<b>23.6%</b>	<b>1057</b>	<b>15.0%</b>	<b>401</b>	<b>5.7%</b>	<b>53</b>	<b>0.8%</b>	<b>1</b>	<b>0.0%</b>	<b>342</b>	<b>4.9%</b>	<b>100</b>	<b>1.4%</b>	<b>6</b>	<b>0.1%</b>	<b>728</b>	<b>10.4%</b>	<b>2237</b>	<b>31.8%</b>	<b>31</b>	<b>0.4%</b>	<b>0</b>	<b>0.0%</b>	<b>46</b>	<b>0.7%</b>	<b>6</b>	<b>0.1%</b>	<b>359</b>	<b>5.1%</b>		
<b>Statewide Totals</b>	<b>7,024</b>	<b>2,714</b>	<b>38.6%</b>	<b>454</b>	<b>6.5%</b>	<b>449</b>	<b>6.4%</b>	<b>2965</b>	<b>42.2%</b>	<b>31</b>	<b>0.4%</b>	<b>46</b>	<b>0.7%</b>	<b>6</b>	<b>0.1%</b>	<b>359</b>	<b>5.1%</b>																

# June 2015 SB94 Supplemental Report

## DYC Detention Maximum Youth Served by Judicial District<sup>1</sup>

Region	JD	Detention Capacity	Detention ADP		Maximum Youth Served on a Single Day <sup>2,3</sup>			
			June 2015	YTD	June 2015		YTD	
					Number of Youth	% of Detention Capacity	Number of Youth	% of Detention Capacity
<i>Central Region</i>								
	1st	37	26.8	26.0	33	89.2%	36	97.3%
	2nd	64	60.3	53.2	68	106.3%	69	107.8%
	5th	4	4.1	2.6	6	150.0%	6	150.0%
	18th	61	43.7	47.6	52	85.2%	62	101.6%
<b>Central Region</b>		<b>166</b>	<b>134.9</b>	<b>129.4</b>	<b>143</b>	<b>86.1%</b>	<b>153</b>	<b>92.2%</b>
<i>Northeast Region</i>								
	8th	21	22.2	17.6	33	157.1%	33	157.1%
	13th	5	3.0	2.2	5	100.0%	7	140.0%
	17th	30	20.1	21.7	30	100.0%	30	100.0%
	19th	25	27.4	25.0	33	132.0%	43	172.0%
	20th	13	4.0	5.9	10	76.9%	13	100.0%
<b>Northeast Region</b>		<b>94</b>	<b>76.6</b>	<b>72.5</b>	<b>88</b>	<b>93.6%</b>	<b>91</b>	<b>96.8%</b>
<i>Southern Region</i>								
	3rd	2	1.0	0.9	2	100.0%	3	150.0%
	4th	51	38.7	36.5	45	88.2%	52	102.0%
	10th	13	13.8	12.0	18	138.5%	21	161.5%
	11th	8	2.6	2.6	6	75.0%	7	87.5%
	12th	4	0.9	1.4	3	75.0%	4	100.0%
	15th	2	0.9	0.9	2	100.0%	4	200.0%
	16th	3	1.0	1.6	2	66.7%	6	200.0%
<b>Southern Region</b>		<b>83</b>	<b>59.0</b>	<b>55.8</b>	<b>63</b>	<b>75.9%</b>	<b>72</b>	<b>86.7%</b>
<i>Western Region</i>								
	6th	5	1.4	2.3	3	60.0%	6	120.0%
	7th	7	2.3	4.4	4	57.1%	8	114.3%
	9th	6	2.3	2.5	4	66.7%	7	116.7%
	14th	3	1.0	0.9	1	33.3%	4	133.3%
	21st	14	8.7	10.8	11	78.6%	19	135.7%
	22nd	4	0.8	1.7	3	75.0%	6	150.0%
<b>Western Region</b>		<b>39</b>	<b>16.6</b>	<b>22.7</b>	<b>21</b>	<b>53.8%</b>	<b>32</b>	<b>82.1%</b>
<i>Missing JD or Multiple JDs</i>			1.3	1.5				
<b>Statewide</b>		<b>382</b>	<b>288.4</b>	<b>281.8</b>	<b>305</b>	<b>79.8%</b>	<b>322</b>	<b>84.3%</b>

<sup>1</sup> Maximum youth served is the highest number of youth in detention on a single day during the month or fiscal year.

<sup>2</sup> Regional figures are not the sum of judicial districts, but represent the maximum count on one day for the entire region.

<sup>3</sup> State figures are not the sum of regional figures, but represent the maximum count on one day for the entire state.

## June 2015 SB94 Supplemental Report

### SB94 Community ADP by Judicial District

Region	JD	Committed		ICJ		Municipal		Pre-Adjudicated		Sentenced		VCO		Total	
		June	YTD	June	YTD	June	YTD	June	YTD	June	YTD	June	YTD	June	YTD
<i>Central Region</i>															
	1st	0.0	0.0	0.0	0.0	0.0	0.0	182.9	131.4	11.4	11.2	0.0	0.0	194.3	142.6
	2nd	10.8	4.1	3.1	0.7	0.0	0.0	331.7	206.0	73.6	59.7	0.0	0.0	419.2	270.5
	5th	0.0	0.0	0.0	0.0	0.0	0.0	9.9	7.6	30.0	30.8	0.0	0.0	39.9	38.4
	18th	0.0	0.1	0.0	0.0	0.0	0.0	276.7	227.0	23.8	20.3	0.0	0.0	300.5	247.4
<b>Central Total</b>		<b>10.8</b>	<b>4.2</b>	<b>3.1</b>	<b>0.8</b>	<b>0.0</b>	<b>0.0</b>	<b>801.2</b>	<b>572.0</b>	<b>138.7</b>	<b>121.9</b>	<b>0.0</b>	<b>0.0</b>	<b>953.9</b>	<b>698.9</b>
<i>Northeast Region</i>															
	8th	0.0	0.0	0.0	0.0	0.0	0.0	46.0	47.8	16.0	24.6	0.0	0.0	62.0	72.4
	13th	0.0	0.0	0.0	0.0	0.0	0.0	13.5	19.4	15.3	12.6	4.0	4.9	32.8	36.9
	17th	0.2	0.3	0.0	0.0	1.0	0.3	113.2	72.2	22.2	39.9	0.0	0.0	136.7	112.7
	19th	0.2	0.1	0.0	0.0	0.0	0.0	62.2	50.7	32.6	33.4	0.0	0.3	95.0	84.6
	20th	0.0	0.2	0.0	0.0	0.0	0.0	63.9	48.7	58.4	46.7	0.0	0.0	122.3	95.6
<b>Northeast Total</b>		<b>0.4</b>	<b>0.7</b>	<b>0.0</b>	<b>0.0</b>	<b>1.0</b>	<b>0.3</b>	<b>298.9</b>	<b>238.8</b>	<b>144.5</b>	<b>157.3</b>	<b>4.0</b>	<b>5.2</b>	<b>448.8</b>	<b>402.3</b>
<i>Southern Region</i>															
	3rd	0.1	0.0	0.0	0.0	0.0	0.0	4.7	3.4	4.6	5.7	0.7	0.1	10.2	9.1
	4th	1.0	0.4	0.0	0.0	1.2	0.3	133.3	91.9	89.1	53.5	1.0	0.4	225.6	146.6
	10th	0.0	0.5	0.0	0.1	20.0	4.5	12.2	14.1	15.2	19.2	12.5	6.7	59.8	45.1
	11th	0.0	0.0	0.0	0.0	0.0	0.0	12.3	11.1	25.0	31.0	0.0	0.0	37.3	42.1
	12th	0.0	0.0	0.0	0.0	0.0	0.0	9.0	5.9	3.1	6.3	0.0	0.0	12.1	12.2
	15th	0.0	0.0	0.0	0.0	0.0	0.0	2.9	4.3	6.6	6.6	0.0	0.0	9.5	10.9
	16th	0.0	0.0	0.0	0.0	0.0	0.0	4.0	2.4	14.3	12.6	4.0	5.2	22.3	20.3
<b>Southern Total</b>		<b>1.1</b>	<b>0.9</b>	<b>0.0</b>	<b>0.1</b>	<b>21.2</b>	<b>4.8</b>	<b>178.5</b>	<b>133.2</b>	<b>157.9</b>	<b>134.9</b>	<b>18.2</b>	<b>12.5</b>	<b>376.8</b>	<b>286.3</b>
<i>Western Region</i>															
	6th	0.0	0.0	0.0	0.0	0.0	0.0	9.7	10.6	0.0	0.7	0.0	0.0	9.7	11.3
	7th	0.0	0.0	0.0	0.0	0.6	0.1	12.1	12.4	15.8	16.6	0.0	0.0	28.5	29.0
	9th	0.0	0.0	0.0	0.0	0.0	0.0	10.1	8.8	2.2	2.6	0.0	0.0	12.2	11.5
	14th	0.0	0.0	0.0	0.0	0.0	0.0	10.6	4.8	5.0	3.8	1.0	0.3	16.6	9.0
	21st	0.0	0.0	0.0	0.0	0.0	0.0	39.7	44.0	7.6	7.2	0.0	0.0	47.2	51.3
	22nd	0.0	0.0	0.0	0.0	0.0	0.0	5.4	6.7	0.0	0.9	0.0	0.0	5.4	7.6
<b>Western Total</b>		<b>0.0</b>	<b>0.0</b>	<b>0.0</b>	<b>0.0</b>	<b>0.6</b>	<b>0.1</b>	<b>87.4</b>	<b>87.4</b>	<b>30.6</b>	<b>31.9</b>	<b>1.0</b>	<b>0.3</b>	<b>119.6</b>	<b>119.7</b>
<b>Statewide Total</b>		<b>12.4</b>	<b>5.8</b>	<b>3.1</b>	<b>0.9</b>	<b>22.8</b>	<b>5.1</b>	<b>1366.1</b>	<b>1031.4</b>	<b>471.7</b>	<b>446.0</b>	<b>23.2</b>	<b>18.0</b>	<b>1899.1</b>	<b>1507.1</b>