

May 2015 FY 2014-2015 SB94 JDSAG SUPPLEMENTAL REPORT

Prepared by the Division of Youth Corrections (DYC)
Research and Evaluation Unit
June 19, 2015



COLORADO

**Office of Children,
Youth & Families**

Division of Youth Corrections

May 2015 SB94 Supplemental Report

DYC Commitment ADP & New Commitments by Judicial District

Region	JD ¹	2015 Population Estimates ²	ADP ³		New Commitments		
			May 2015	YTD	May 2015	YTD	YTD Rate ⁴
<i>Central Region</i>							
	1st	54,562	68.3	69.7	3	35	6.4
	2nd	58,395	144.5	148.0	6	59	10.1
	5th	10,073	9.0	8.2	0	5	5.0
	18th	115,459	89.1	90.3	3	43	3.7
Central Total		238,489	310.9	316.3	12	142	6.0
<i>Northeast Region</i>							
	8th	31,146	35.5	36.9	2	22	7.1
	13th	8,509	8.5	13.9	0	4	4.7
	17th	66,724	96.6	84.7	5	62	9.3
	19th	34,214	50.0	54.8	3	37	10.8
	20th	31,597	9.8	9.6	2	5	1.6
Northeast Total		172,190	200.2	199.9	12	130	7.5
<i>Southern Region</i>							
	3rd	1,993	2.0	2.5	0	2	10.0
	4th	79,018	104.5	106.5	6	39	4.9
	10th	18,161	33.9	26.4	6	22	12.1
	11th	7,322	7.0	10.3	0	4	5.5
	12th	5,216	5.6	6.6	0	1	1.9
	15th	2,182	1.0	2.0	0	0	0.0
	16th	2,902	0.8	2.8	0	1	3.4
Southern Total		116,794	154.8	157.0	12	69	5.9
<i>Western Region</i>							
	6th	6,346	15.9	14.0	0	7	11.0
	7th	10,564	8.4	9.0	1	4	3.8
	9th	9,448	4.7	8.6	0	2	2.1
	14th	5,479	2.4	1.7	0	2	3.7
	21st	15,437	29.9	28.0	0	14	9.1
	22nd	3,013	6.0	6.0	1	3	10.0
Western Total		50,287	67.2	67.4	2	32	6.4
Statewide Total		577,760	733.2	740.7	38	373	6.5

¹ JD represents the judicial district in which the client was committed. Regional totals are a sum of their respective judicial districts. Regional totals reported here may differ slightly from those reported in the Monthly Population Report, where region is defined by active caseloads.

² Source: DOLA 2015 Estimates

³ Due to rounding, totals shown may not be an exact sum of the subtotals.

⁴ Per 10,000 youth in the population

May 2015 SB94 Supplemental Report

DYC Detention ADP and New Detention Admissions by Judicial District

Region	JD	2015 Population Estimates ¹	ADP		New Admits		YTD New Admit Rate ²
			May 2015	YTD	May 2015	YTD	
<i>Central Region</i>							
	1st	54,562	27.6	26.0	55	635	116.4
	2nd	58,395	53.2	52.5	97	1,031	176.6
	5th	10,073	4.1	2.5	4	31	30.8
	18th	115,459	46.5	48.8	91	1,163	100.7
Central Total		238,489	131.4	129.7	247	2,860	119.9
<i>Northeast Region</i>							
	8th	31,146	22.4	17.2	49	440	141.3
	13th	8,509	1.4	2.2	6	80	94.0
	17th	66,724	21.8	21.9	43	490	73.4
	19th	34,214	22.3	24.8	53	569	166.3
	20th	31,597	5.1	6.0	18	300	94.9
Northeast Total		172,190	73.0	72.1	169	1,879	109.1
<i>Southern Region</i>							
	3rd	1,993	1.7	0.9	3	20	100.4
	4th	79,018	34.9	36.3	58	713	90.2
	10th	18,161	12.8	11.8	42	372	204.8
	11th	7,322	2.6	2.6	15	121	165.3
	12th	5,216	1.2	1.4	1	44	84.4
	15th	2,182	1.0	0.9	3	26	119.2
	16th	2,902	1.4	1.6	0	19	65.5
Southern Total		116,794	55.7	55.6	122	1,315	112.6
<i>Western Region</i>							
	6th	6,346	1.7	2.3	2	45	70.9
	7th	10,564	6.5	4.6	5	52	49.2
	9th	9,448	1.4	2.5	4	42	44.5
	14th	5,479	0.5	0.9	1	25	45.6
	21st	15,437	12.0	11.0	26	200	129.6
	22nd	3,013	0.8	1.8	1	28	92.9
Western Total		50,287	22.9	23.2	39	392	78.0
<i>Missing JD or Multiple JDs</i>			2.4	1.4			
Statewide Total		577,760	285.3	282.0	577	6,446	111.6

¹ Source: DOLA 2015 Estimates

² Per 10,000 youth in the population

May 2015 SB94 Supplemental Report

DYC Detention LOS by Judicial District				
Region	JD	YTD Detention Releases	YTD LOS (days)	LOS (days) Compared to State AVG
<i>Central Region</i>				
	1st	631	13.2	-1.5
	2nd	1,026	17.1	2.4
	5th	29	28.3	13.7
	18th	1,159	13.2	-1.4
Central Total		2,845	14.8	0.1
<i>Northeast Region</i>				
	8th	426	12.5	-2.2
	13th	81	9.3	-5.3
	17th	497	14.7	0.0
	19th	565	13.4	-1.3
	20th	299	6.1	-8.6
Northeast Total		1,868	12.2	-2.5
<i>Southern Region</i>				
	3rd	19	14.0	-0.6
	4th	700	15.9	1.3
	10th	369	12.8	-1.9
	11th	117	6.9	-7.8
	12th	42	9.8	-4.8
	15th	28	11.7	-3.0
	16th	21	23.1	8.5
Southern Total		1,296	14.0	-0.6
<i>Western Region</i>				
	6th	45	16.4	1.8
	7th	48	26.2	11.6
	9th	38	19.0	4.4
	14th	24	11.5	-3.1
	21st	191	15.1	0.4
	22nd	29	20.6	6.0
Western Total		375	17.3	2.6
Statewide Total		6,403	14.7	-

May 2015
SB94 JDSAG Supplemental Report

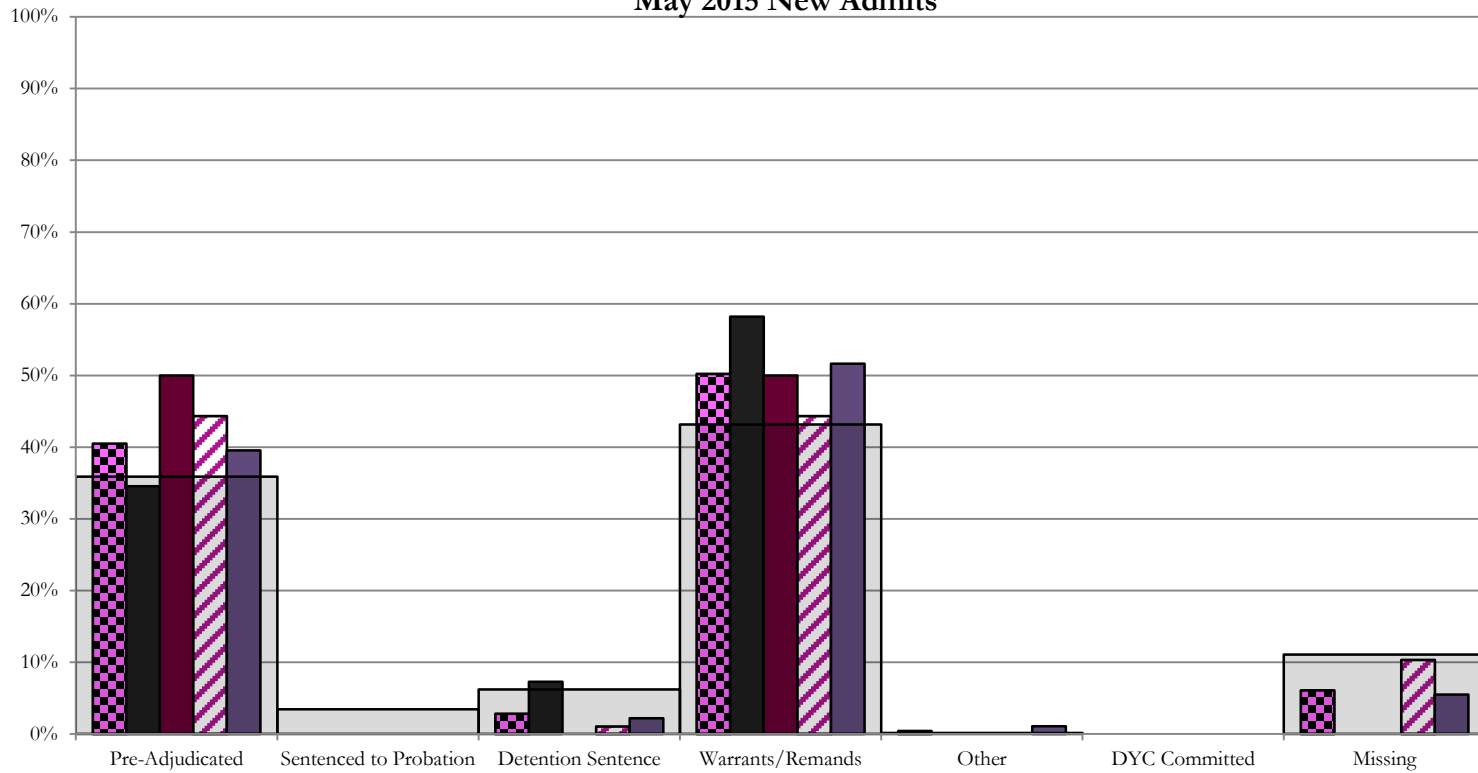
SB94 Reason Detained (RD) by Judicial District

Region	JD	Pre-Adjudicated				Sentenced to Probation				Detention Sentence						Warrants/Remands				Other						DYC Committed		Missing									
		Felony		Misdemeanor		Technical Violator		New Charges		Probation Sentence		Detention Sentence		Valid Court Order (VCO) Truancy		Awaiting DSS (Social Services) Placement		Failure to Appear (FTA)		Failure to Comply (FTC)		Interstate Compact on Juveniles (ICJ) Hold		Immigration Hold		No Bond Hold		Out-of-Country Warrant		Institutional		Parole		Missing			
		#	%	#	%	#	%	#	%	#	%	#	%	#	%	#	%	#	%	#	%	#	%	#	%	#	%	#	%	#	%	#	%	#	%		
Central Region																																					
1st	55	10	18.2%	9	16.4%	0	0.0%	0	0.0%	0	0.0%	4	7.3%	0	0.0%	0	0.0%	8	14.5%	24	43.6%	0	0.0%	0	0.0%	0	0.0%	0	0.0%	0	0.0%	0	0.0%	0	0.0%	0	0.0%
2nd	97	34	35.1%	9	9.3%	0	0.0%	0	0.0%	0	0.0%	1	1.0%	0	0.0%	0	0.0%	9	9.3%	34	35.1%	0	0.0%	0	0.0%	0	0.0%	0	0.0%	0	0.0%	0	0.0%	0	0.0%	0	0.0%
5th	4	2	50.0%	0	0.0%	0	0.0%	0	0.0%	0	0.0%	0	0.0%	0	0.0%	0	0.0%	0	0.0%	2	50.0%	0	0.0%	0	0.0%	0	0.0%	0	0.0%	0	0.0%	0	0.0%	0	0.0%	0	0.0%
18th	91	23	25.3%	13	14.3%	0	0.0%	0	0.0%	0	0.0%	2	2.2%	0	0.0%	0	0.0%	6	6.6%	41	45.1%	1	1.1%	0	0.0%	0	0.0%	0	0.0%	0	0.0%	0	0.0%	0	0.0%	5	5.5%
Central Total	247	69	28%	31	13%	0	0.0%	0	0.0%	0	0.0%	7	2.8%	0	0.0%	0	0.0%	23	9%	101	41%	1	0.4%	0	0.0%	0	0.0%	0	0.0%	0	0.0%	0	0.0%	0	0.0%	15	6.1%
Northeast Region																																					
8th	49	4	8.2%	9	18.4%	0	0.0%	0	0.0%	0	0.0%	3	6.1%	0	0.0%	0	0.0%	1	2.0%	18	36.7%	0	0.0%	0	0.0%	0	0.0%	0	0.0%	0	0.0%	0	0.0%	0	0.0%	14	28.6%
13th	6	1	16.7%	1	16.7%	0	0.0%	0	0.0%	0	0.0%	0	0.0%	0	0.0%	0	0.0%	0	0.0%	2	33.3%	0	0.0%	0	0.0%	0	0.0%	0	0.0%	0	0.0%	0	0.0%	2	33.3%		
17th	43	11	25.6%	5	11.6%	0	0.0%	0	0.0%	0	0.0%	0	0.0%	0	0.0%	0	0.0%	6	14.0%	18	41.9%	0	0.0%	0	0.0%	0	0.0%	0	0.0%	0	0.0%	0	0.0%	4	9.3%		
19th	53	8	15.1%	12	22.6%	10	18.9%	0	0.0%	0	0.0%	2	3.8%	1	1.9%	0	0.0%	12	22.6%	8	15.1%	0	0.0%	0	0.0%	0	0.0%	0	0.0%	0	0.0%	0	0.0%	0	0.0%	0	0.0%
20th	18	0	0.0%	0	0.0%	0	0.0%	0	0.0%	0	0.0%	0	0.0%	0	0.0%	0	0.0%	0	0.0%	1	5.6%	0	0.0%	0	0.0%	0	0.0%	0	0.0%	0	0.0%	0	0.0%	17	94.4%		
Northeast Total	169	24	14%	27	16%	10	5.9%	0	0.0%	0	0.0%	5	3.0%	1	0.6%	0	0.0%	19	11.2%	47	28%	0	0.0%	0	0.0%	0	0.0%	0	0.0%	0	0.0%	0	0.0%	0	0.0%	36	21%
Southern Region																																					
3rd	3	0	0.0%	0	0%	1	33.3%	0	0.0%	0	0.0%	0	0.0%	0	0.0%	0	0.0%	0	0.0%	0	0.0%	0	0.0%	0	0.0%	0	0.0%	0	0.0%	0	0.0%	0	0.0%	2	66.7%		
4th	58	20	34.5%	7	12.1%	4	6.9%	1	1.7%	0	0.0%	0	0.0%	0	0.0%	0	0.0%	6	10.3%	15	25.9%	0	0.0%	0	0.0%	0	0.0%	0	0.0%	0	0.0%	0	0.0%	5	8.6%		
10th	42	5	11.9%	1	2.4%	1	2.4%	0	0.0%	0	0.0%	7	16.7%	4	9.5%	0	0.0%	16	38.1%	8	19.0%	0	0.0%	0	0.0%	0	0.0%	0	0.0%	0	0.0%	0	0.0%	0	0.0%	0	0.0%
11th	15	2	13.3%	3	20.0%	0	0.0%	0	0.0%	0	0.0%	2	13.3%	0	0.0%	0	0.0%	0	0.0%	2	13.3%	0	0.0%	0	0.0%	0	0.0%	0	0.0%	0	0.0%	6	40.0%				
12th	1	0	0.0%	1	100.0%	0	0.0%	0	0.0%	0	0.0%	0	0.0%	0	0.0%	0	0.0%	0	0.0%	0	0.0%	0	0.0%	0	0.0%	0	0.0%	0	0.0%	0	0.0%	0	0.0%	0	0.0%		
15th	3	0	0.0%	0	0.0%	0	0.0%	1	33.3%	0	0.0%	0	0.0%	0	0.0%	0	0.0%	0	0.0%	2	67%	0	0.0%	0	0.0%	0	0.0%	0	0.0%	0	0.0%	0	0.0%	0	0.0%	0	0.0%
16th	0	0	0.0%	0	0.0%	0	0.0%	0	0.0%	0	0.0%	0	0.0%	0	0.0%	0	0.0%	0	0.0%	0	0%	0	0.0%	0	0.0%	0	0.0%	0	0.0%	0	0.0%	0	0.0%	0	0.0%	0	0.0%
Southern Total	122	27	22%	12	10%	6	4.9%	2	1.6%	0	0.0%	9	7.4%	4	3.3%	0	0.0%	22	18%	27	22%	0	0.0%	0	0.0%	0	0.0%	0	0.0%	0	0.0%	0	0.0%	13	11%		
Western Region																																					
6th	2	2	100.0%	0	0.0%	0	0.0%	0	0.0%	0	0.0%	0	0.0%	0	0.0%	0	0.0%	0	0.0%	0	0.0%	0	0.0%	0	0.0%	0	0.0%	0	0.0%	0	0.0%	0	0.0%	0	0.0%	0	0%
7th	5	0	0.0%	1	20.0%	0	0.0%	1	20.0%	0	0.0%	2	40.0%	0	0.0%	0	0.0%	0	0.0%	1	20.0%	0	0.0%	0	0.0%	0	0.0%	0	0.0%	0	0.0%	0	0.0%	0	0.0%	0	0.0%
9th	4	1	25.0%	1	25.0%	0	0.0%	0	0.0%	0	0.0%	1	25.0%	0	0.0%	0	0.0%	0	0.0%	0	0.0%	0	0.0%	0	0.0%	0	0.0%	0	0.0%	0	0.0%	1	25.0%	0	0.0%	0	0.0%
14th	1	0	0.0%	0	0.0%	0	0.0%	0	0.0%	0	0.0%	0	0.0%	0	0.0%	0	0.0%	0	0.0%	0	0.0%	0	0.0%	0	0.0%	0	0.0%	0	0.0%	0	0.0%	1	100.0%	0	0.0%	0	0.0%
21st	26	7	26.9%	5	19.2%	1	3.8%	1	3.8%	0	0.0%	4	15.4%	0	0.0%	0	0.0%	2	7.7%	6	23.1%	0	0.0%	0	0.0%	0	0.0%	0	0.0%	0	0.0%	0	0.0%	0	0.0%	0	0.0%
22nd	1	0	0.0%	0	0.0%	0	0.0%	0	0.0%	0	0.0%	0	0.0%	0	0.0%	0	0.0%	0	0.0%	1	100.0%	0	0.0%	0	0.0%	0	0.0%	0	0.0%	0	0.0%	0	0.0%	0	0.0%	0	0.0%
Western Total	39	10	26%	7	17.9%	1	2.6%	2	5.1%	0	0.0%	7	17.9%	0	0.0%	0	0.0%	2	5.1%	8	21%	0	0.0%	0	0.0%	0	0.0%	0	0.0%	0	0.0%	0	0.0%	2	5%		
Individual RD Totals	577	130	23%	77	13%	17	2.9%	3	0.5%	0	0.0%	28	4.9%	8	1.4%	0	0.0%	66	11%	183	32%	1	0.2%	0	0.0%	0	0.0%	0	0.0%	0	0.0%	0	0.0%	64	11%		
Statewide Totals	577	207	35.9%	20	3.5%	36	6.2%	249	43.2%	1	0.2%	0	0.0%	66	11%	183	32%	1	0.2%	0	0.0%	0	0.0%	0	0.0%	0	0.0%	0	0.0%	64	11%	64	11%	64	11%		

Central Region

SB94 Reason Detained by Judicial District

May 2015 New Admits



■ CENTRAL REGION, 247 New Admits

■ 5th JD, 4 New Admits

■ 18th JD, 91 New Admits

■ 1st JD, 55 New Admits

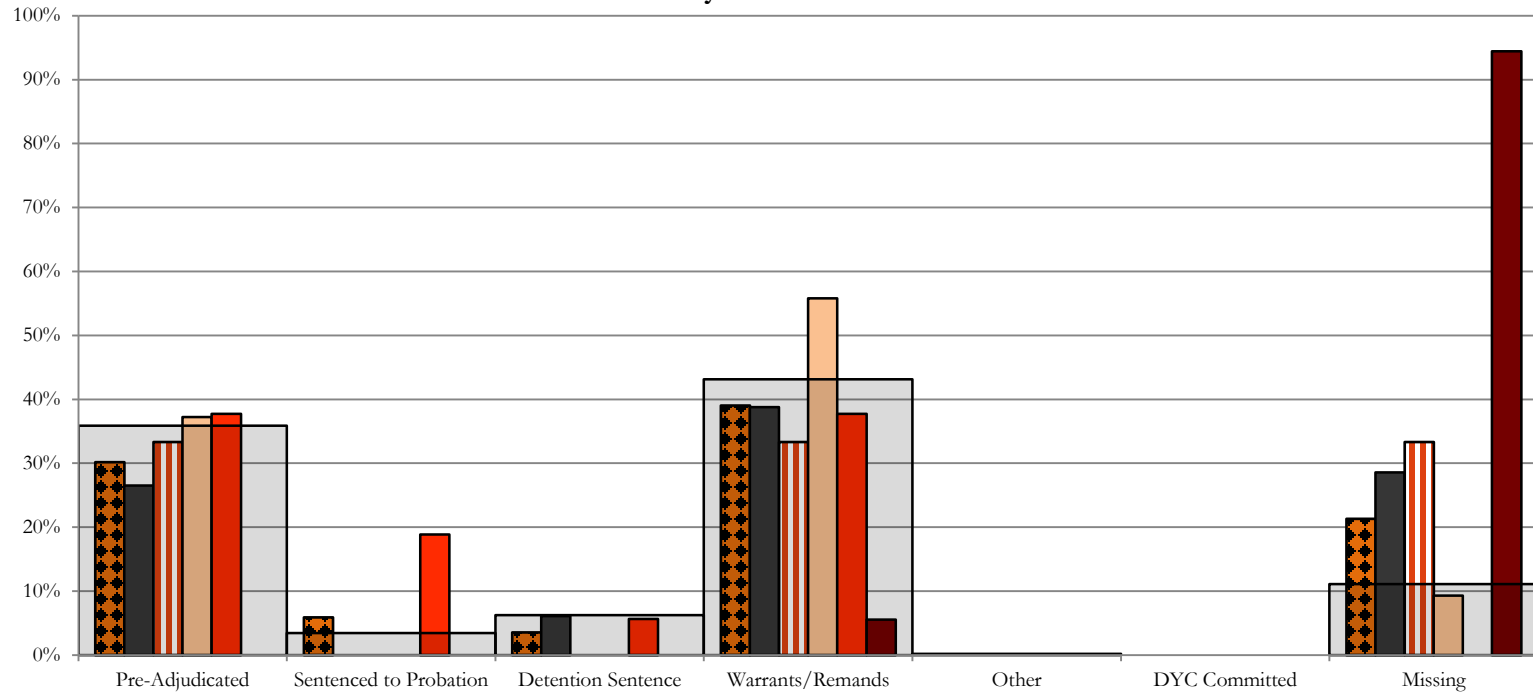
■ 2nd JD, 97 New Admits

■ STATEWIDE, 577 New Admits

Northeast Region

SB94 Reason Detained by Judicial District

May 2015 New Admits



■ NORTHEAST REGION, 169 New Admits

■ 8th JD, 49 New Admits

■ 13th JD, 6 New Admits

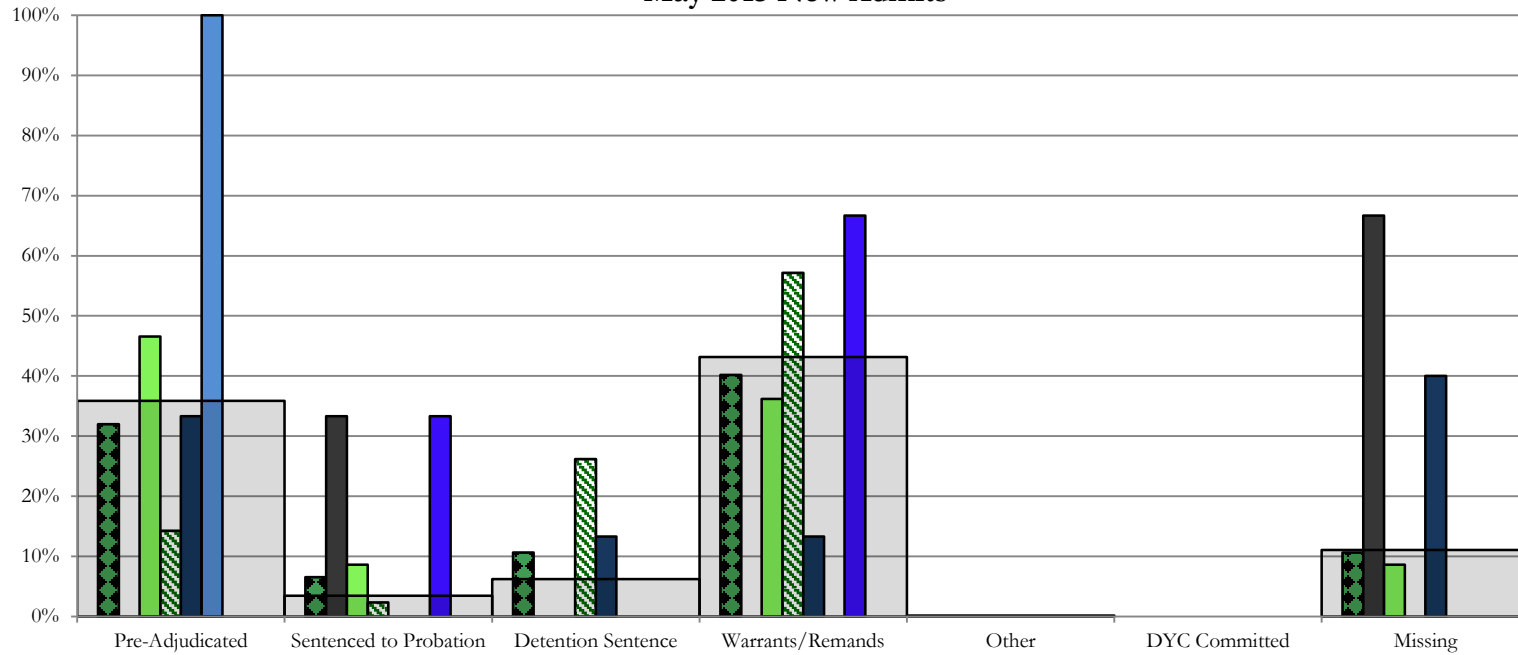
■ 17th JD, 43 New Admits

■ 19th JD, 53 New Admits

■ 20th JD, 18 New Admits

■ STATEWIDE, 577 New Admits

Southern Region SB94 Reason Detained by Judicial District May 2015 New Admits



■ SOUTHERN REGION, 122 New Admits

■ 4th JD, 58 New Admits

■ 11th JD, 15 New Admits

■ 15th JD, 3 New Admits

■ STATEWIDE, 577 New Admits

■ 3rd JD, 3 New Admits

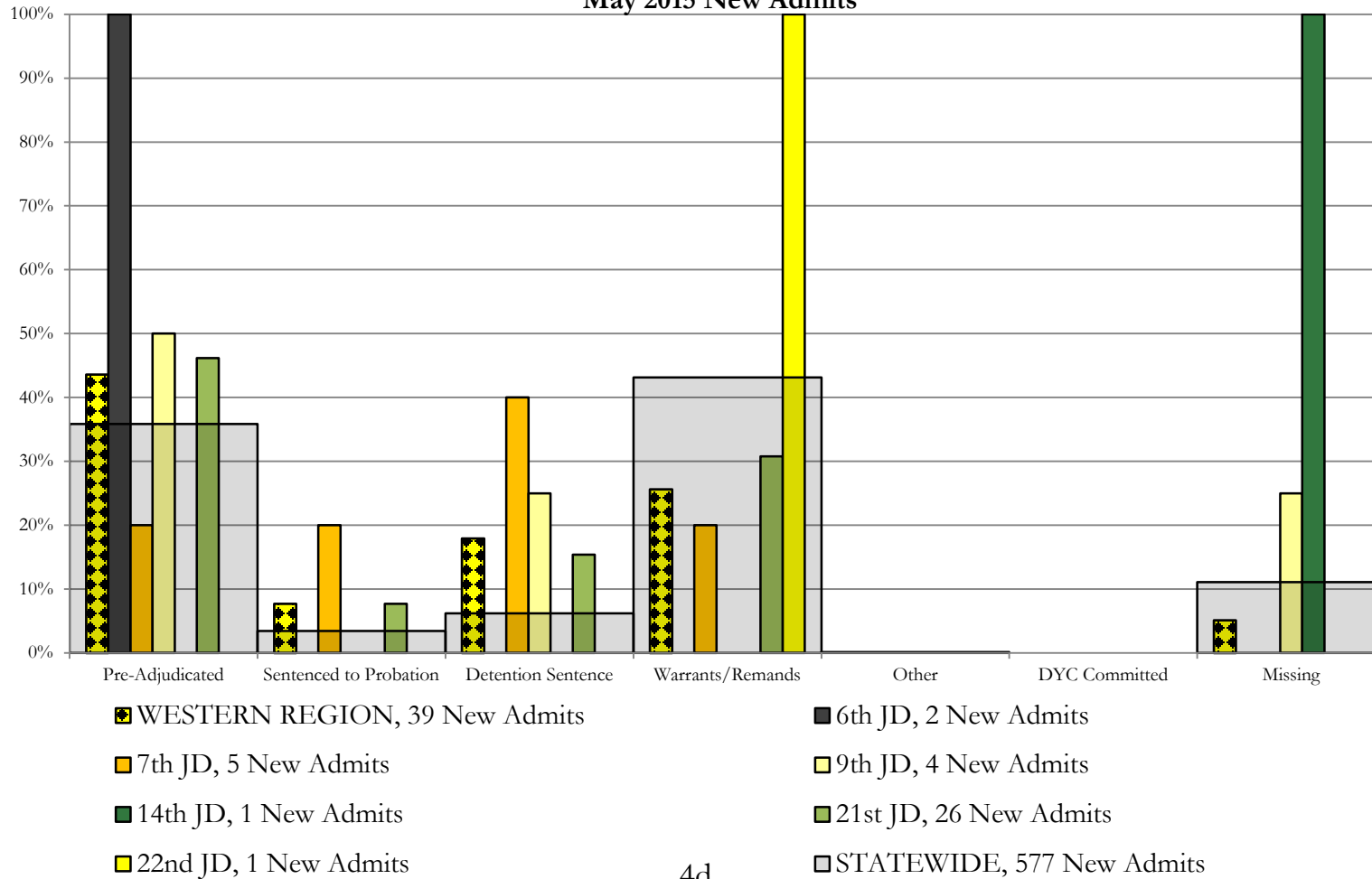
■ 10th JD, 42 New Admits

■ 12th JD, 1 New Admits

■ 16th JD, 0 New Admits

Western Region

SB94 Reason Detained by Judicial District May 2015 New Admits



May 2015 SB94 Supplemental Report

DYC Detention Maximum Youth Served by Judicial District¹

Region	JD	Detention Capacity	Detention ADP		Maximum Youth Served on a Single Day ^{2,3}			
			May 2015	YTD	May 2015		YTD	
					Number of Youth	% of Detention Capacity	Number of Youth	% of Detention Capacity
<i>Central Region</i>								
	1st	37	27.6	26.0	34	91.9%	36	97.3%
	2nd	64	53.2	52.5	62	96.9%	68	106.3%
	5th	4	4.1	2.5	6	150.0%	6	150.0%
	18th	61	46.5	48.8	52	85.2%	62	101.6%
Central Region		166	131.4	129.7	146	88.0%	154	92.8%
<i>Northeast Region</i>								
	8th	21	22.4	17.2	29	138.1%	30	142.9%
	13th	5	1.4	2.2	4	80.0%	7	140.0%
	17th	30	21.8	21.9	28	93.3%	30	100.0%
	19th	25	22.3	24.8	31	124.0%	43	172.0%
	20th	13	5.1	6.0	11	84.6%	13	100.0%
Northeast Region		94	73.0	72.1	90	95.7%	91	96.8%
<i>Southern Region</i>								
	3rd	2	1.7	0.9	3	150.0%	3	150.0%
	4th	51	34.9	36.3	40	78.4%	52	102.0%
	10th	13	12.8	11.8	16	123.1%	21	161.5%
	11th	8	2.6	2.6	5	62.5%	7	87.5%
	12th	4	1.2	1.4	2	50.0%	4	100.0%
	15th	2	1.0	0.9	4	200.0%	4	200.0%
	16th	3	1.4	1.6	2	66.7%	6	200.0%
Southern Region		83	55.7	55.6	63	75.9%	72	86.7%
<i>Western Region</i>								
	6th	5	1.7	2.3	2	40.0%	6	120.0%
	7th	7	6.5	4.6	8	114.3%	8	114.3%
	9th	6	1.4	2.5	3	50.0%	7	116.7%
	14th	3	0.5	0.9	1	33.3%	4	133.3%
	21st	14	12.0	11.0	16	114.3%	19	135.7%
	22nd	4	0.8	1.8	2	50.0%	6	150.0%
Western Region		39	22.9	23.2	29	74.4%	32	82.1%
<i>Missing JD or Multiple JDs</i>			2.4	1.4				
Statewide		382	285.3	282.0	318	83.2%	323	84.6%

¹ Maximum youth served is the highest number of youth in detention on a single day during the month or fiscal year.

² Regional figures are not the sum of judicial districts, but represent the maximum count on one day for the entire region.

³ State figures are not the sum of regional figures, but represent the maximum count on one day for the entire state.

May 2015 SB94 Supplemental Report

SB94 Community ADP by Judicial District

Region	JD	Committed		ICJ		Municipal		Pre-Adjudicated		Sentenced		VCO		Total	
		May	YTD	May	YTD	May	YTD	May	YTD	May	YTD	May	YTD	May	YTD
<i>Central Region</i>															
	1st	0.0	0.0	0.0	0.0	0.0	0.0	173.8	127.2	7.9	10.7	0.0	0.0	181.7	137.9
	2nd	9.2	3.5	3.0	0.5	0.0	0.0	316.1	194.8	66.2	58.4	0.0	0.0	394.5	257.2
	5th	0.0	0.0	0.0	0.0	0.0	0.0	8.5	7.3	29.3	30.7	0.0	0.0	37.8	38.0
	18th	0.0	0.1	0.0	0.0	0.0	0.0	271.0	224.0	21.5	17.9	0.0	0.0	292.5	241.9
Central Total		9.2	3.6	3.0	0.6	0.0	0.0	769.4	553.3	124.9	117.7	0.0	0.0	906.5	675.1
<i>Northeast Region</i>															
	8th	0.0	0.0	0.0	0.0	0.0	0.0	38.6	45.3	14.8	23.0	0.0	0.0	53.5	68.3
	13th	0.0	0.0	0.0	0.0	0.0	0.0	22.8	23.7	18.3	14.9	4.0	4.9	45.0	43.5
	17th	0.0	0.3	0.0	0.0	1.0	0.2	95.0	69.2	25.4	41.2	0.0	0.0	121.5	110.8
	19th	0.1	0.1	0.0	0.0	0.0	0.0	60.3	50.1	31.9	33.7	0.2	0.4	92.5	84.3
	20th	0.0	0.3	0.0	0.0	0.0	0.0	44.0	42.9	45.9	37.0	0.0	0.0	89.8	80.2
Northeast Total		0.1	0.7	0.0	0.0	1.0	0.2	260.6	231.2	136.4	149.8	4.2	5.3	402.3	387.2
<i>Southern Region</i>															
	3rd	0.0	0.0	0.0	0.0	0.0	0.0	2.2	2.7	6.0	6.2	0.0	0.0	8.2	9.0
	4th	1.6	0.4	0.0	0.0	1.0	0.2	123.1	89.6	76.0	49.0	1.0	0.4	202.7	139.6
	10th	0.0	0.5	0.0	0.1	10.9	3.1	9.5	15.3	21.1	20.4	16.0	6.6	57.6	46.0
	11th	0.0	0.0	0.0	0.0	0.0	0.0	10.0	11.0	23.9	31.7	0.0	0.0	33.9	42.7
	12th	0.0	0.0	0.0	0.0	0.0	0.0	6.4	5.5	4.7	6.6	0.0	0.0	11.2	12.1
	15th	0.0	0.0	0.0	0.0	0.0	0.0	7.5	5.1	9.8	9.2	0.0	0.0	17.3	14.3
	16th	0.0	0.0	0.0	0.0	0.0	0.0	5.0	2.4	14.0	12.9	4.0	5.3	23.0	20.6
Southern Total		1.6	0.9	0.0	0.1	11.9	3.3	163.8	131.7	155.5	136.0	21.0	12.3	353.8	284.3
<i>Western Region</i>															
	6th	0.0	0.0	0.0	0.0	0.0	0.0	11.6	11.1	0.0	0.7	0.0	0.0	11.6	11.8
	7th	0.0	0.0	0.0	0.0	0.0	0.0	14.8	12.5	14.1	16.5	0.0	0.0	28.9	29.0
	9th	0.0	0.0	0.0	0.0	0.0	0.0	15.1	8.9	5.1	3.0	0.0	0.0	20.1	11.9
	14th	0.0	0.0	0.0	0.0	0.0	0.0	8.5	4.3	5.0	3.7	1.0	0.2	14.5	8.3
	21st	0.0	0.0	0.0	0.0	0.0	0.0	37.5	44.0	9.0	7.2	0.0	0.0	46.5	51.2
	22nd	0.0	0.0	0.0	0.0	0.0	0.0	5.4	6.8	0.0	1.0	0.0	0.0	5.4	7.8
Western Total		0.0	0.0	0.0	0.0	0.0	0.0	92.7	87.6	33.2	32.1	1.0	0.2	127.0	120.0
Statewide Total		10.9	5.2	3.0	0.7	12.9	3.5	1286.6	1003.7	450.0	435.6	26.2	17.9	1789.6	1466.6