

April 2015 FY 2014-2015 SB94 JDSAG SUPPLEMENTAL REPORT

Prepared by the Division of Youth Corrections (DYC)
Research and Evaluation Unit
May 27, 2015



COLORADO

**Office of Children,
Youth & Families**

Division of Youth Corrections

April 2015 SB94 Supplemental Report

DYC Commitment ADP & New Commitments by Judicial District

Region	JD ¹	2015 Population Estimates ²	ADP ³		New Commitments		
			April 2015	YTD	April 2015	YTD	YTD Rate ⁴
<i>Central Region</i>							
	1st	54,562	68.3	69.4	5	31	5.7
	2nd	58,395	140.6	148.4	6	53	9.1
	5th	10,073	9.7	8.2	0	5	5.0
	18th	115,459	84.8	90.5	6	40	3.5
Central Total		238,489	303.3	316.4	17	129	5.4
<i>Northeast Region</i>							
	8th	31,146	36.2	37.0	2	20	6.4
	13th	8,509	9.6	14.5	0	4	4.7
	17th	66,724	93.4	83.5	5	57	8.5
	19th	34,214	52.5	55.3	3	34	9.9
	20th	31,597	9.0	9.6	0	3	0.9
Northeast Total		172,190	200.7	199.9	10	118	6.9
<i>Southern Region</i>							
	3rd	1,993	2.0	2.5	0	2	10.0
	4th	79,018	102.6	106.6	2	32	4.0
	10th	18,161	30.4	25.6	4	16	8.8
	11th	7,322	7.9	10.6	0	4	5.5
	12th	5,216	5.3	6.7	1	1	1.9
	15th	2,182	1.0	2.1	0	0	0.0
	16th	2,902	1.3	3.0	0	1	3.4
Southern Total		116,794	150.5	157.1	7	56	4.8
<i>Western Region</i>							
	6th	6,346	13.6	13.8	2	7	11.0
	7th	10,564	6.5	9.1	1	3	2.8
	9th	9,448	6.3	9.0	0	2	2.1
	14th	5,479	2.5	1.7	0	2	3.7
	21st	15,437	30.3	27.8	0	14	9.1
	22nd	3,013	3.9	6.1	1	1	3.3
Western Total		50,287	63.0	67.4	4	29	5.8
Statewide Total		577,760	717.5	740.8	38	332	5.7

¹ JD represents the judicial district in which the client was committed. Regional totals are a sum of their respective judicial districts. Regional totals reported here may differ slightly from those reported in the Monthly Population Report, where region is defined by active caseloads.

² Source: DOLA 2015 Estimates

³ Due to rounding, totals shown may not be an exact sum of the subtotals.

⁴ Per 10,000 youth in the population

April 2015 SB94 Supplemental Report

DYC Detention ADP and New Detention Admissions by Judicial District

Region	JD	2015 Population Estimates ¹	ADP		New Admits		YTD New Admit Rate ²
			April 2015	YTD	April 2015	YTD	
<i>Central Region</i>							
	1st	54,562	23.2	25.8	70	580	106.3
	2nd	58,395	54.8	52.4	128	934	159.9
	5th	10,073	1.1	2.3	1	27	26.8
	18th	115,459	47.3	49.0	126	1,072	92.8
Central Total		238,489	126.4	129.6	325	2,613	109.6
<i>Northeast Region</i>							
	8th	31,146	18.3	16.6	51	391	125.5
	13th	8,509	2.9	2.2	10	74	87.0
	17th	66,724	22.1	21.8	54	447	67.0
	19th	34,214	25.2	25.1	56	517	151.1
	20th	31,597	6.0	6.1	29	282	89.2
Northeast Total		172,190	74.5	72.0	200	1,711	99.4
<i>Southern Region</i>							
	3rd	1,993	1.7	0.8	4	17	85.3
	4th	79,018	35.9	36.5	69	656	83.0
	10th	18,161	12.6	11.7	39	330	181.7
	11th	7,322	1.2	2.6	10	106	144.8
	12th	5,216	1.7	1.4	6	43	82.4
	15th	2,182	0.3	0.9	2	23	105.4
	16th	2,902	3.8	1.7	5	19	65.5
Southern Total		116,794	57.1	55.6	135	1,194	102.2
<i>Western Region</i>							
	6th	6,346	1.6	2.4	4	43	67.8
	7th	10,564	6.1	4.4	6	47	44.5
	9th	9,448	2.9	2.6	3	38	40.2
	14th	5,479	0.8	1.0	3	24	43.8
	21st	15,437	9.8	10.9	22	174	112.7
	22nd	3,013	2.6	1.9	4	27	89.6
Western Total		50,287	23.9	23.2	42	353	70.2
<i>Missing JD or Multiple JDs</i>			<i>1.5</i>	<i>1.3</i>			
Statewide Total		577,760	283.5	281.7	702	5,871	101.6

¹ Source: DOLA 2015 Estimates

² Per 10,000 youth in the population

April 2015 SB94 Supplemental Report

DYC Detention LOS by Judicial District				
Region	JD	YTD Detention Releases	YTD LOS (days)	LOS (days) Compared to State AVG
<i>Central Region</i>				
	1st	577	13.1	-1.5
	2nd	919	17.2	2.6
	5th	27	29.3	14.8
	18th	1,073	12.9	-1.7
Central Total		2,596	14.7	0.1
<i>Northeast Region</i>				
	8th	385	12.5	-2.0
	13th	73	9.3	-5.2
	17th	452	14.5	-0.1
	19th	522	13.6	-1.0
	20th	278	6.0	-8.5
Northeast Total		1,710	12.2	-2.4
<i>Southern Region</i>				
	3rd	15	13.8	-0.8
	4th	646	15.5	0.9
	10th	328	13.3	-1.2
	11th	105	7.3	-7.3
	12th	40	10.0	-4.6
	15th	24	12.4	-2.2
	16th	20	22.4	7.8
Southern Total		1,178	14.0	-0.6
<i>Western Region</i>				
	6th	43	16.0	1.4
	7th	39	23.8	9.2
	9th	36	18.9	4.3
	14th	23	11.6	-3.0
	21st	166	15.5	0.9
	22nd	26	20.9	6.3
Western Total		333	17.1	2.5
Statewide Total		5,830	14.6	-

April 2015
SB94 JDSAG Supplemental Report

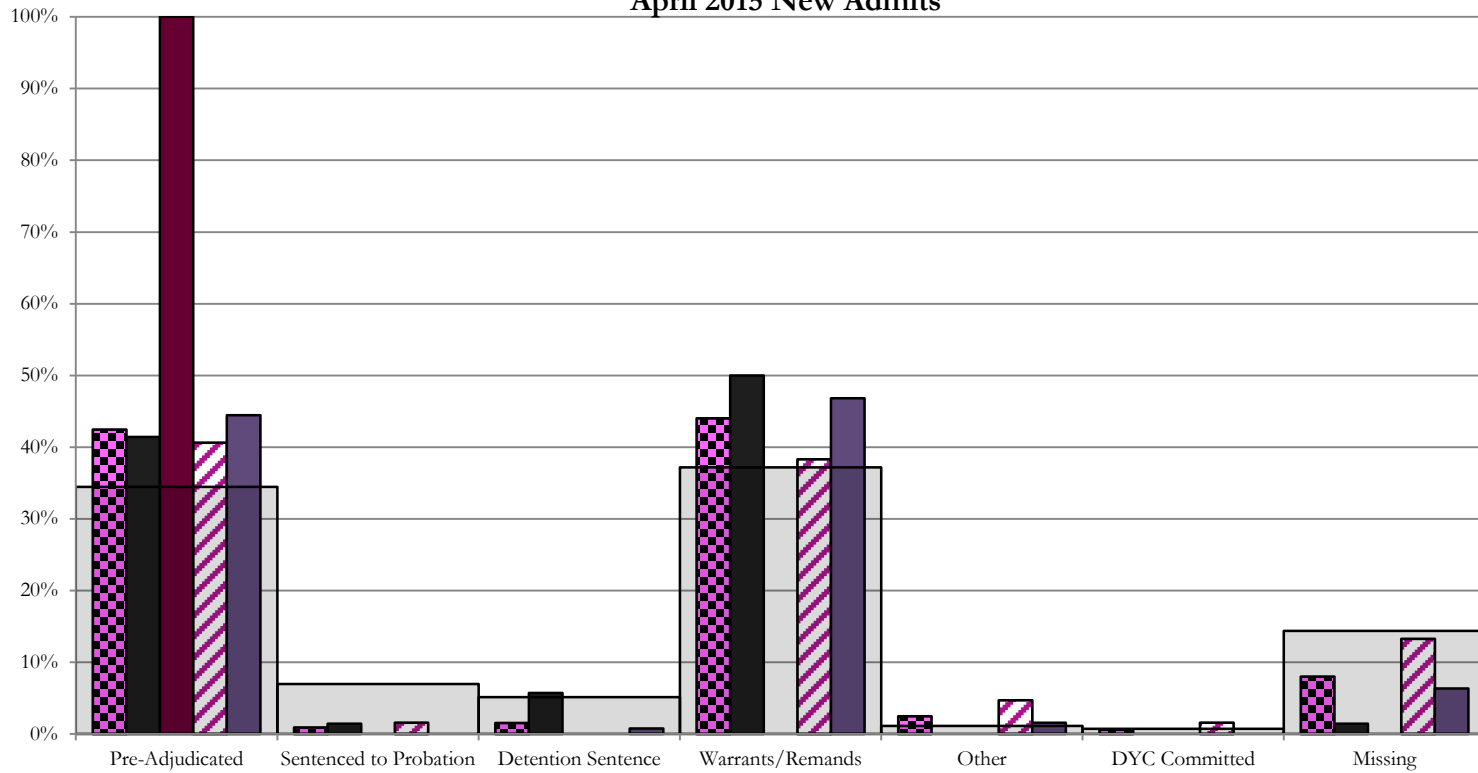
SB94 Reason Detained (RD) by Judicial District

Region	JD	Monthly New Admits	Pre-Adjudicated				Sentenced to Probation				Detention Sentence						Warrants/Remands				Other						DYC Committed		Missing									
			Felony		Misdemeanor		Technical Violator		New Charges		Probation Sentence		Detention Sentence		Valid Court Order (VCO) Truancy		Awaiting DSS (Social Services) Placement		Failure to Appear (FTA)		Failure to Comply (FTC)		Interstate Compact on Juveniles (ICJ) Hold		Immigration Hold		No Bond Hold		Out-of-Country Warrant		Institutional		Parole		Missing			
			#	%	#	%	#	%	#	%	#	%	#	%	#	%	#	%	#	%	#	%	#	%	#	%	#	%	#	%	#	%	#	%	#	%		
<i>Central Region</i>																																						
	1st	70	24	34.3%	5	7.1%	1	1.4%	0	0.0%	0	0.0%	4	5.7%	0	0.0%	0	0.0%	11	15.7%	24	34.3%	0	0.0%	0	0.0%	0	0.0%	0	0.0%	0	0.0%	0	0.0%	0	0.0%	1	1.4%
	2nd	128	39	30.5%	13	10.2%	1	0.8%	1	0.8%	0	0.0%	0	0.0%	0	0.0%	0	0.0%	11	8.6%	38	29.7%	6	4.7%	0	0.0%	0	0.0%	0	0.0%	0	0.0%	0	0.0%	2	1.6%	17	13.3%
	5th	1	1	100.0%	0	0.0%	0	0.0%	0	0.0%	0	0.0%	0	0.0%	0	0.0%	0	0.0%	0	0.0%	0	0.0%	0	0.0%	0	0.0%	0	0.0%	0	0.0%	0	0.0%	0	0.0%	0	0.0%	0	0.0%
	18th	126	31	24.6%	25	19.8%	0	0.0%	0	0.0%	1	0.8%	0	0.0%	0	0.0%	0	0.0%	13	10.3%	46	36.5%	2	1.6%	0	0.0%	0	0.0%	0	0.0%	0	0.0%	0	0.0%	0	0.0%	8	6.3%
Central Total		325	95	29%	43	13%	2	0.6%	1	0.3%	0	0.0%	5	1.5%	0	0.0%	0	0.0%	35	11%	108	33%	8	2.5%	0	0.0%	0	0.0%	0	0.0%	0	0.0%	2	0.6%	26	8.0%		
<i>Northeast Region</i>																																						
	8th	51	6	11.8%	1	2.0%	1	2.0%	0	0.0%	0	0.0%	0	0.0%	0	0.0%	0	0.0%	4	7.8%	14	27.5%	0	0.0%	0	0.0%	0	0.0%	0	0.0%	0	0.0%	0	0.0%	0	0.0%	25	49.0%
	13th	10	1	10.0%	2	20.0%	1	10.0%	0	0.0%	0	0.0%	0	0.0%	0	0.0%	0	0.0%	0	0.0%	2	20.0%	0	0.0%	0	0.0%	0	0.0%	0	0.0%	0	0.0%	0	0.0%	4	40.0%		
	17th	54	13	24.1%	7	13.0%	1	1.9%	0	0.0%	0	0.0%	0	0.0%	0	0.0%	0	0.0%	3	5.6%	24	44.4%	0	0.0%	0	0.0%	0	0.0%	0	0.0%	0	0.0%	0	0.0%	7	13.0%		
	19th	56	8	14.3%	8	14.3%	20	35.7%	2	3.6%	0	0.0%	1	1.8%	8	14.3%	0	0.0%	3	5.4%	6	10.7%	0	0.0%	0	0.0%	0	0.0%	0	0.0%	0	0.0%	0	0.0%	0	0.0%	0	0.0%
	20th	29	1	3.4%	0	0.0%	0	0.0%	0	0.0%	0	0.0%	2	6.9%	0	0.0%	1	3.4%	0	0.0%	3	10.3%	0	0.0%	0	0.0%	0	0.0%	0	0.0%	0	0.0%	0	0.0%	22	75.9%		
Northeast Total		200	29	15%	18	9%	23	11.5%	2	1.0%	0	0.0%	3	1.5%	8	4.0%	1	0.5%	10	5.0%	49	25%	0	0.0%	0	0.0%	0	0.0%	0	0.0%	0	0.0%	0	0.0%	57	29%		
<i>Southern Region</i>																																						
	3rd	4	0	0.0%	4	100%	0	0.0%	0	0.0%	0	0.0%	0	0.0%	0	0.0%	0	0.0%	0	0.0%	0	0.0%	0	0.0%	0	0.0%	0	0.0%	0	0.0%	0	0.0%	0	0.0%	0	0.0%		
	4th	69	16	23.2%	5	7.2%	9	13.0%	8	11.6%	0	0.0%	0	0.0%	0	0.0%	0	0.0%	4	5.8%	16	23.2%	0	0.0%	0	0.0%	0	0.0%	0	0.0%	3	4.3%	0	0.0%	8	11.6%		
	10th	39	3	7.7%	3	7.7%	2	5.1%	0	0.0%	0	0.0%	9	23.1%	1	2.6%	0	0.0%	12	30.8%	5	12.8%	0	0.0%	0	0.0%	0	0.0%	0	0.0%	0	0.0%	0	0.0%	4	10.3%		
	11th	10	0	0.0%	0	0.0%	1	10.0%	0	0.0%	0	0.0%	2	20.0%	0	0.0%	0	0.0%	1	10.0%	3	30.0%	0	0.0%	0	0.0%	0	0.0%	0	0.0%	0	0.0%	3	30.0%				
	12th	6	2	33.3%	0	0.0%	0	0.0%	0	0.0%	0	0.0%	2	33.3%	0	0.0%	0	0.0%	0	0.0%	2	33.3%	0	0.0%	0	0.0%	0	0.0%	0	0.0%	0	0.0%	0	0.0%	0	0.0%		
	15th	2	1	50.0%	0	0.0%	0	0.0%	0	0.0%	0	0.0%	0	0.0%	0	0.0%	0	0.0%	0	0.0%	1	50%	0	0.0%	0	0.0%	0	0.0%	0	0.0%	0	0.0%	0	0.0%	0	0.0%		
	16th	5	1	20.0%	1	20.0%	0	0.0%	0	0.0%	0	0.0%	0	0.0%	0	0.0%	0	0.0%	1	20.0%	2	40%	0	0.0%	0	0.0%	0	0.0%	0	0.0%	0	0.0%	0	0.0%	0	0.0%		
Southern Total		135	23	17%	13	10%	12	8.9%	8	5.9%	0	0.0%	13	9.6%	1	0.7%	0	0.0%	18	13%	29	21%	0	0.0%	0	0.0%	0	0.0%	0	0.0%	3	2.2%	0	0.0%	15	11%		
<i>Western Region</i>																																						
	6th	4	0	0.0%	0	0.0%	0	0.0%	0	0.0%	0	0.0%	0	0.0%	0	0.0%	0	0.0%	0	0.0%	1	25.0%	0	0.0%	0	0.0%	0	0.0%	0	0.0%	0	0.0%	0	0.0%	3	75%		
	7th	6	2	33.3%	0	0.0%	0	0.0%	1	16.7%	0	0.0%	0	0.0%	0	0.0%	0	0.0%	0	0.0%	2	33.3%	0	0.0%	0	0.0%	0	0.0%	0	0.0%	0	0.0%	0	0.0%	1	16.7%		
	9th	3	1	33.3%	1	33.3%	0	0.0%	0	0.0%	0	0.0%	0	0.0%	0	0.0%	0	0.0%	0	0.0%	1	33.3%	0	0.0%	0	0.0%	0	0.0%	0	0.0%	0	0.0%	0	0.0%	0	0.0%		
	14th	3	1	33.3%	1	33.3%	0	0.0%	0	0.0%	0	0.0%	0	0.0%	1	33.3%	0	0.0%	0	0.0%	0	0.0%	0	0.0%	0	0.0%	0	0.0%	0	0.0%	0	0.0%	0	0.0%	0	0.0%		
	21st	22	12	54.5%	3	13.6%	0	0.0%	0	0.0%	0	0.0%	0	0.0%	0	0.0%	0	0.0%	2	9.1%	4	18.2%	0	0.0%	0	0.0%	0	0.0%	0	0.0%	0	0.0%	0	0.0%	1	4.5%		
	22nd	4	0	0.0%	0	0.0%	0	0.0%	0	0.0%	0	0.0%	0	0.0%	0	0.0%	0	0.0%	0	0.0%	2	50.0%	0	0.0%	0	0.0%	0	0.0%	0	0.0%	0	0.0%	0	0.0%	2	50.0%		
Western Total		42	16	38%	5	11.9%	0	0.0%	1	2.4%	0	0.0%	0	0.0%	1	2.4%	0	0.0%	2	4.8%	10	24%	0	0.0%	0	0.0%	0	0.0%	0	0.0%	0	0.0%	7	17%				
Individual RD Totals		702	163	23%	79	11%	37	5.3%	12	1.7%	0	0.0%	21	3.0%	14	2.0%	1	0.1%	65	9%	196	28%	8	1.1%	0	0.0%	0	0.0%	0	0.0%	3	0.4%	2	0.3%	101	14%		
Statewide Totals		702	242	34.5%	49	7.0%			36				5.1%	261	37.2%	8	1.1%					8	1.1%			5	0.7%	101	14%									

Central Region

SB94 Reason Detained by Judicial District

April 2015 New Admits



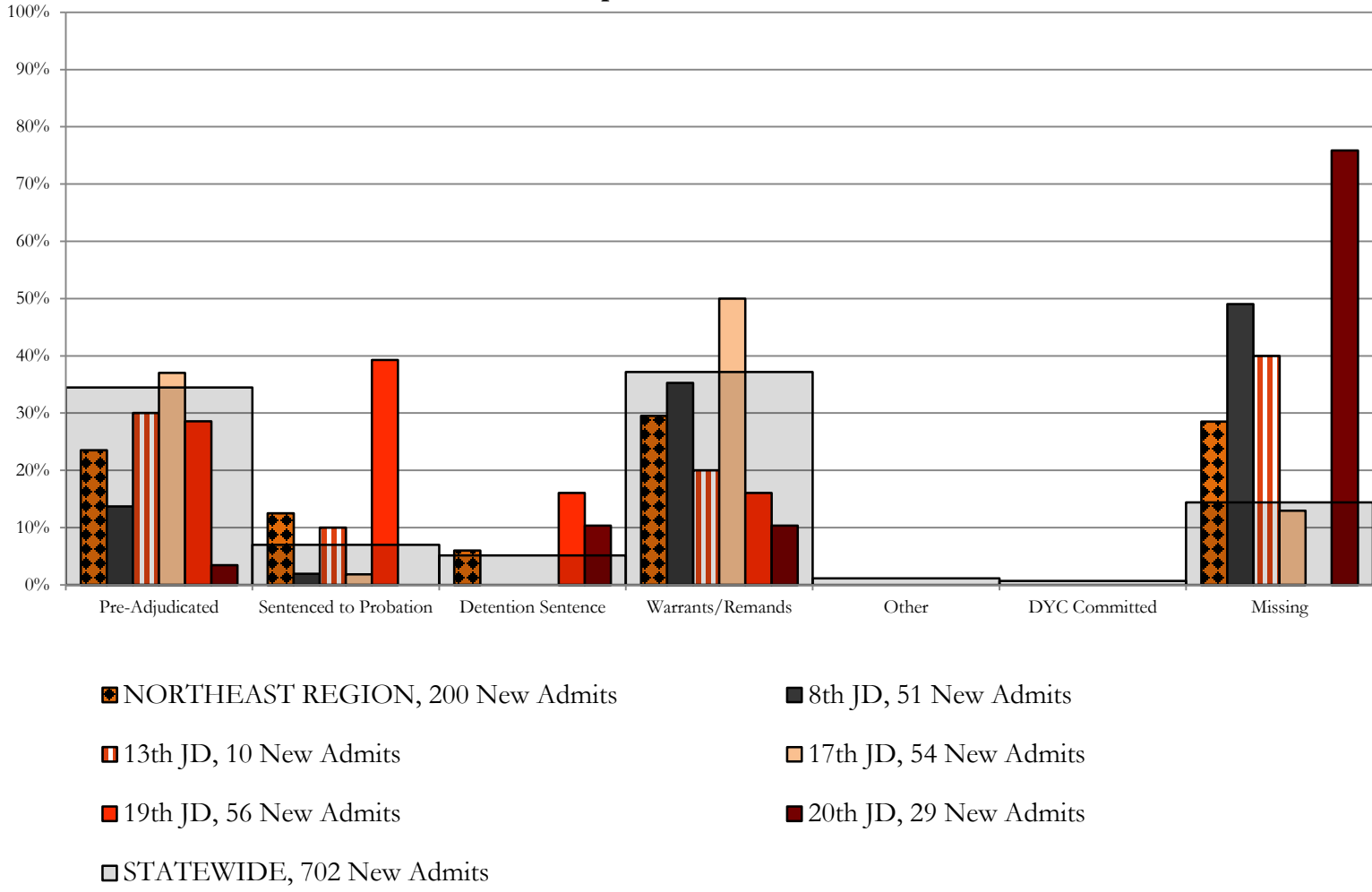
■ CENTRAL REGION, 325 New Admits
 ■ 5th JD, 1 New Admits
 ■ 18th JD, 126 New Admits

■ 1st JD, 70 New Admits
 ■ 2nd JD, 128 New Admits
 ■ STATEWIDE, 702 New Admits

Northeast Region

SB94 Reason Detained by Judicial District

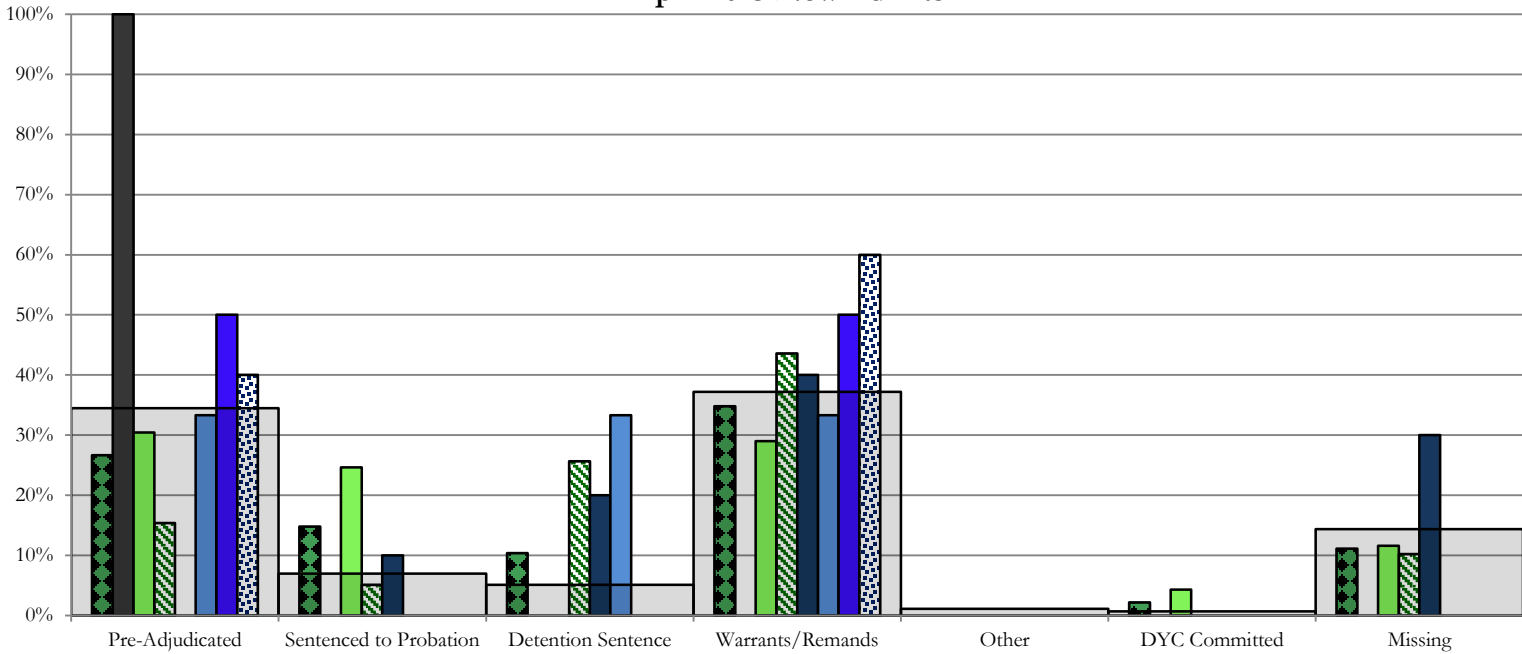
April 2015 New Admits



Southern Region

SB94 Reason Detained by Judicial District

April 2015 New Admits

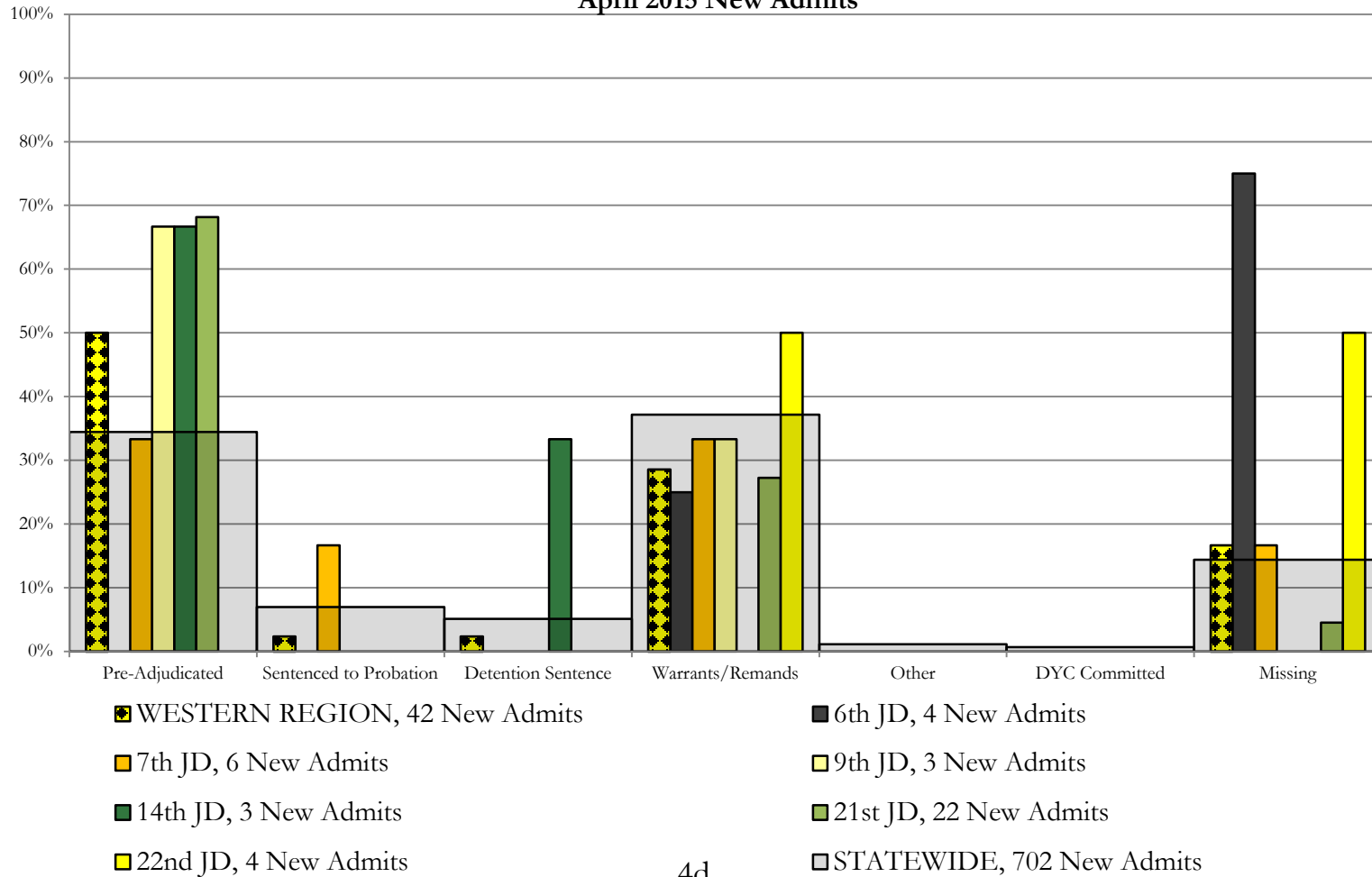


- SOUTHERN REGION, 135 New Admits
- 3rd JD, 4 New Admits
- 4th JD, 69 New Admits
- 10th JD, 39 New Admits
- 11th JD, 10 New Admits
- 12th JD, 6 New Admits
- 15th JD, 2 New Admits
- 16th JD, 5 New Admits
- STATEWIDE, 702 New Admits

Western Region

SB94 Reason Detained by Judicial District

April 2015 New Admits



April 2015 SB94 Supplemental Report

DYC Detention Maximum Youth Served by Judicial District¹

Region	JD	Detention Capacity	Detention ADP		Maximum Youth Served on a Single Day ^{2,3}			
			April 2015	YTD	April 2015		YTD	
					Number of Youth	% of Detention Capacity	Number of Youth	% of Detention Capacity
<i>Central Region</i>								
	1st	37	23.2	25.8	31	83.8%	36	97.3%
	2nd	64	54.8	52.4	66	103.1%	68	106.3%
	5th	4	1.1	2.3	2	50.0%	5	125.0%
	18th	61	47.3	49.0	56	91.8%	62	101.6%
Central Region		166	126.4	129.6	150	90.4%	154	92.8%
<i>Northeast Region</i>								
	8th	21	18.3	16.6	25	119.0%	29	138.1%
	13th	5	2.9	2.2	4	80.0%	7	140.0%
	17th	30	22.1	21.8	29	96.7%	30	100.0%
	19th	25	25.2	25.1	31	124.0%	43	172.0%
	20th	13	6.0	6.1	11	84.6%	13	100.0%
Northeast Region		94	74.5	72.0	88	93.6%	90	95.7%
<i>Southern Region</i>								
	3rd	2	1.7	0.8	3	150.0%	3	150.0%
	4th	51	35.9	36.5	41	80.4%	52	102.0%
	10th	13	12.6	11.7	21	161.5%	21	161.5%
	11th	8	1.2	2.6	3	37.5%	7	87.5%
	12th	4	1.7	1.4	3	75.0%	4	100.0%
	15th	2	0.3	0.9	1	50.0%	4	200.0%
	16th	3	3.8	1.7	6	200.0%	6	200.0%
Southern Region		83	57.1	55.6	64	77.1%	72	86.7%
<i>Western Region</i>								
	6th	5	1.6	2.4	2	40.0%	6	120.0%
	7th	7	6.1	4.4	8	114.3%	8	114.3%
	9th	6	2.9	2.6	4	66.7%	7	116.7%
	14th	3	0.8	1.0	2	66.7%	4	133.3%
	21st	14	9.8	10.9	13	92.9%	19	135.7%
	22nd	4	2.6	1.9	4	100.0%	6	150.0%
Western Region		39	23.9	23.2	27	69.2%	32	82.1%
<i>Missing JD or Multiple JDs</i>			1.5	1.3				
Statewide		382	283.5	281.7	317	83.0%	322	84.3%

¹ Maximum youth served is the highest number of youth in detention on a single day during the month or fiscal year.

² Regional figures are not the sum of judicial districts, but represent the maximum count on one day for the entire region.

³ State figures are not the sum of regional figures, but represent the maximum count on one day for the entire state.

April 2015 SB94 Supplemental Report

SB94 Community ADP by Judicial District

Region	JD	Committed		ICJ		Municipal		Pre-Adjudicated		Sentenced		VCO		Total	
		April	YTD	April	YTD	April	YTD	April	YTD	April	YTD	April	YTD	April	YTD
<i>Central Region</i>															
	1st	0.0	0.0	0.0	0.0	0.0	0.0	166.2	122.8	5.3	11.1	0.0	0.0	171.5	133.9
	2nd	4.9	3.1	2.7	0.3	0.0	0.0	286.6	182.7	61.8	57.4	0.0	0.0	356.0	243.4
	5th	0.0	0.0	0.0	0.0	0.0	0.0	8.0	6.8	22.9	29.0	0.0	0.0	30.9	35.9
	18th	0.0	0.1	1.0	0.4	0.0	0.0	314.7	240.3	20.0	18.6	0.0	0.0	335.6	259.4
Central Total		4.9	3.1	3.7	0.7	0.0	0.0	775.4	552.6	110.0	116.2	0.0	0.0	894.0	672.6
<i>Northeast Region</i>															
	8th	0.0	0.0	0.0	0.0	0.0	0.0	38.0	45.4	11.0	23.3	0.0	0.0	49.0	68.7
	13th	0.0	0.0	0.0	0.0	0.0	0.0	25.5	23.9	16.3	14.5	4.0	5.0	45.8	43.5
	17th	0.0	0.0	0.0	0.0	1.0	0.1	115.2	75.9	35.3	42.8	0.0	0.0	151.5	118.8
	19th	0.1	0.1	0.0	0.0	0.0	0.0	61.7	48.3	41.7	34.3	3.0	0.4	106.6	83.2
	20th	0.0	0.3	0.0	0.0	0.0	0.0	52.4	43.0	41.8	35.6	0.0	0.0	94.2	78.8
Northeast Total		0.2	0.4	0.0	0.0	1.0	0.1	292.8	236.5	146.2	150.6	7.0	5.4	447.1	393.1
<i>Southern Region</i>															
	3rd	0.0	0.0	0.0	0.0	0.0	0.0	3.0	2.8	6.0	6.3	0.0	0.0	9.0	9.1
	4th	0.8	0.3	0.0	0.0	1.0	0.1	129.3	87.6	63.6	46.5	1.0	0.3	195.7	134.8
	10th	0.0	0.6	0.0	0.1	4.4	2.3	9.4	15.9	27.8	20.6	13.0	5.6	54.6	45.1
	11th	0.0	0.0	0.0	0.0	0.0	0.0	13.4	11.8	37.0	33.7	0.0	0.0	50.4	45.5
	12th	0.0	0.0	0.0	0.0	0.0	0.0	7.0	5.5	5.1	6.8	0.0	0.0	12.1	12.2
	15th	0.0	0.0	0.0	0.0	0.0	0.0	5.6	4.9	10.8	9.1	0.0	0.0	16.3	14.0
	16th	0.0	0.0	0.0	0.0	0.0	0.0	4.5	2.2	13.0	11.8	5.2	5.9	22.8	19.9
Southern Total		0.8	0.9	0.0	0.1	5.4	2.4	172.2	130.5	163.4	134.7	19.2	11.9	361.0	280.4
<i>Western Region</i>															
	6th	0.0	0.0	0.0	0.0	0.0	0.0	12.4	11.0	0.0	0.7	0.0	0.0	12.4	11.7
	7th	0.0	0.0	0.0	0.0	0.0	0.0	13.4	12.3	16.6	16.7	0.0	0.0	29.9	29.0
	9th	0.0	0.0	0.2	0.0	0.0	0.0	13.5	8.2	8.6	3.0	0.0	0.0	22.4	11.3
	14th	0.0	0.0	0.0	0.0	0.0	0.0	6.5	3.9	6.7	3.6	1.0	0.2	14.2	7.7
	21st	0.0	0.0	0.0	0.0	0.0	0.0	41.1	45.0	5.9	7.2	0.0	0.0	47.0	52.2
	22nd	0.0	0.0	0.0	0.0	0.0	0.0	9.1	7.1	0.8	1.1	0.0	0.0	9.9	8.2
Western Total		0.0	0.0	0.2	0.0	0.0	0.0	96.0	87.6	38.5	32.4	1.0	0.2	135.7	120.2
Statewide Total		5.9	4.4	3.9	0.8	6.4	2.5	1336.3	1007.2	458.0	433.8	27.2	17.5	1837.7	1466.3