

March 2015 FY 2014-2015 SB94 JDSAG SUPPLEMENTAL REPORT

Prepared by the Division of Youth Corrections (DYC)
Research and Evaluation Unit
April 23, 2015



COLORADO

**Office of Children,
Youth & Families**

Division of Youth Corrections

March 2015 SB94 Supplemental Report

DYC Commitment ADP & New Commitments by Judicial District

Region	JD ¹	2015 Population Estimates ²	ADP ³		New Commitments		
			March 2015	YTD	March 2015	YTD	YTD Rate ⁴
<i>Central Region</i>							
	1st	54,562	64.1	69.5	4	26	4.8
	2nd	58,395	143.7	149.3	6	47	8.0
	5th	10,073	9.8	8.0	1	5	5.0
	18th	115,459	78.8	91.1	4	34	2.9
Central Total		238,489	296.5	317.8	15	112	4.7
<i>Northeast Region</i>							
	8th	31,146	37.7	37.1	1	18	5.8
	13th	8,509	11.3	15.0	0	4	4.7
	17th	66,724	89.2	82.4	7	52	7.8
	19th	34,214	52.0	55.6	1	31	9.1
	20th	31,597	9.4	9.7	0	3	0.9
Northeast Total		172,190	199.7	199.8	9	108	6.3
<i>Southern Region</i>							
	3rd	1,993	2.7	2.6	0	2	10.0
	4th	79,018	101.6	106.9	4	30	3.8
	10th	18,161	26.0	25.1	4	12	6.6
	11th	7,322	9.4	10.9	0	4	5.5
	12th	5,216	4.9	6.9	0	0	0.0
	15th	2,182	1.1	2.2	0	0	0.0
	16th	2,902	2.4	3.2	0	1	3.4
Southern Total		116,794	148.0	157.8	8	49	4.2
<i>Western Region</i>							
	6th	6,346	12.3	13.8	0	5	7.9
	7th	10,564	7.0	9.4	0	2	1.9
	9th	9,448	7.7	9.3	1	2	2.1
	14th	5,479	3.0	1.6	0	2	3.7
	21st	15,437	29.7	27.5	0	13	8.4
	22nd	3,013	3.9	6.3	0	0	0.0
Western Total		50,287	63.6	67.9	1	24	4.8
Statewide Total		577,760	707.8	743.3	33	293	5.1

¹ JD represents the judicial district in which the client was committed. Regional totals are a sum of their respective judicial districts. Regional totals reported here may differ slightly from those reported in the Monthly Population Report, where region is defined by active caseloads.

² Source: DOLA 2015 Estimates

³ Due to rounding, totals shown may not be an exact sum of the subtotals.

⁴ Per 10,000 youth in the population

March 2015 SB94 Supplemental Report

DYC Detention ADP and New Detention Admissions by Judicial District

Region	JD	2015 Population Estimates ¹	ADP		New Admits		YTD New Admit Rate ²
			March 2015	YTD	March 2015	YTD	
<i>Central Region</i>							
	1st	54,562	19.3	26.1	56	511	93.7
	2nd	58,395	52.6	52.2	87	806	138.0
	5th	10,073	1.1	2.5	4	26	25.8
	18th	115,459	49.0	49.2	102	946	81.9
Central Total		238,489	122.0	130.0	249	2,289	96.0
<i>Northeast Region</i>							
	8th	31,146	15.0	16.5	30	340	109.2
	13th	8,509	1.0	2.2	6	64	75.2
	17th	66,724	21.2	21.8	53	393	58.9
	19th	34,214	30.6	25.1	58	461	134.7
	20th	31,597	6.4	6.2	28	253	80.1
Northeast Total		172,190	74.1	71.7	175	1,511	87.8
<i>Southern Region</i>							
	3rd	1,993	0.4	0.7	2	13	65.2
	4th	79,018	40.7	36.5	78	587	74.3
	10th	18,161	12.2	11.6	40	291	160.2
	11th	7,322	2.4	2.8	8	96	131.1
	12th	5,216	2.2	1.4	5	37	70.9
	15th	2,182	0.7	1.0	2	21	96.2
	16th	2,902	1.2	1.4	2	14	48.2
Southern Total		116,794	59.9	55.5	137	1,059	90.7
<i>Western Region</i>							
	6th	6,346	1.5	2.5	3	39	61.5
	7th	10,564	5.6	4.3	4	41	38.8
	9th	9,448	3.8	2.6	3	35	37.0
	14th	5,479	1.4	1.0	3	21	38.3
	21st	15,437	7.8	11.1	16	152	98.5
	22nd	3,013	4.5	1.8	2	23	76.3
Western Total		50,287	24.5	23.2	31	311	61.8
<i>Missing JD or Multiple JDs</i>			<i>1.6</i>	<i>1.3</i>			
Statewide Total		577,760	282.1	281.6	592	5,170	89.5

¹ Source: DOLA 2015 Estimates

² Per 10,000 youth in the population

March 2015 SB94 Supplemental Report

DYC Detention LOS by Judicial District				
Region	JD	YTD Detention Releases	YTD LOS (days)	LOS (days) Compared to State AVG
<i>Central Region</i>				
	1st	519	13.8	-1.0
	2nd	804	17.7	2.9
	5th	26	30.1	15.3
	18th	949	12.7	-2.1
Central Total		2,298	14.9	0.1
<i>Northeast Region</i>				
	8th	340	12.9	-1.8
	13th	65	9.8	-5.0
	17th	401	15.2	0.4
	19th	461	13.6	-1.2
	20th	249	6.0	-8.8
Northeast Total		1,516	12.5	-2.3
<i>Southern Region</i>				
	3rd	13	14.7	-0.1
	4th	583	15.6	0.8
	10th	287	13.2	-1.6
	11th	96	7.6	-7.2
	12th	35	10.0	-4.8
	15th	23	12.9	-1.9
	16th	15	23.9	9.1
Southern Total		1,052	14.1	-0.7
<i>Western Region</i>				
	6th	39	15.4	0.6
	7th	35	24.3	9.5
	9th	29	17.3	2.5
	14th	20	11.4	-3.4
	21st	147	16.3	1.5
	22nd	20	16.6	1.8
Western Total		290	16.9	2.1
Statewide Total		5,162	14.8	-

March 2015
SB94 JDSAG Supplemental Report

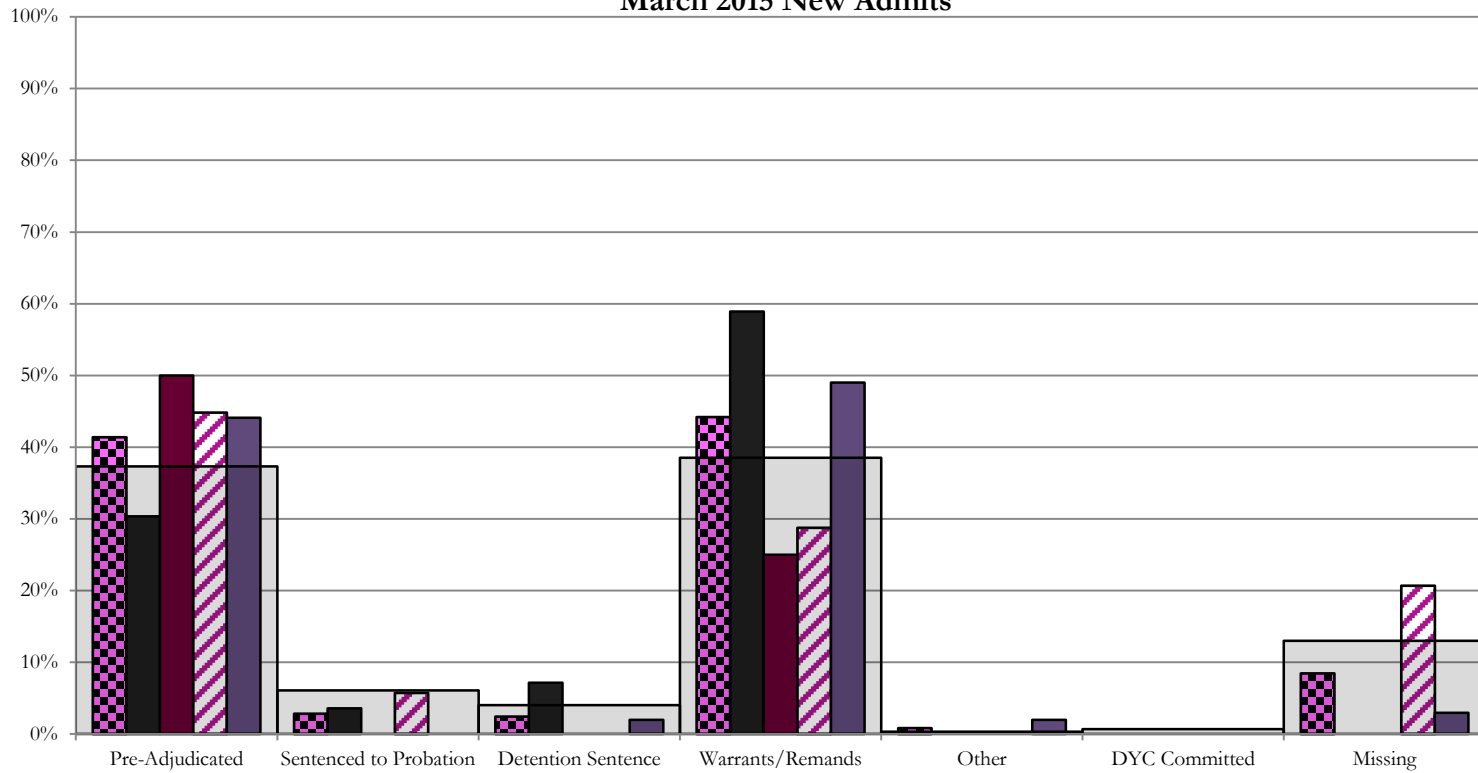
SB94 Reason Detained (RD) by Judicial District

Region	JD	Monthly New Admits	Pre-Adjudicated				Sentenced to Probation				Detention Sentence						Warrants/Remands				Other						DYC Committed		Missing								
			Felony		Misdemeanor		Technical Violator		New Charges		Probation Sentence		Detention Sentence		Valid Court Order (VCO) Truancy		Awaiting DSS (Social Services) Placement		Failure to Appear (FTA)		Failure to Comply (FTC)		Interstate Compact on Juveniles (ICJ) Hold		Immigration Hold		No Bond Hold		Out-of-Country Warrant		Institutional		Parole		Missing		
			#	%	#	%	#	%	#	%	#	%	#	%	#	%	#	%	#	%	#	%	#	%	#	%	#	%	#	%	#	%	#	%	#	%	
Central Region																																					
1st	56	11	19.6%	6	10.7%	2	3.6%	0	0.0%	0	0.0%	4	7.1%	0	0.0%	0	0.0%	10	17.9%	23	41.1%	0	0.0%	0	0.0%	0	0.0%	0	0.0%	0	0.0%	0	0.0%	0	0.0%	0	0.0%
2nd	87	31	35.6%	8	9.2%	3	3.4%	2	2.3%	0	0.0%	0	0.0%	0	0.0%	0	0.0%	7	8.0%	18	20.7%	0	0.0%	0	0.0%	0	0.0%	0	0.0%	0	0.0%	0	0.0%	0	0.0%	18	20.7%
5th	4	2	50.0%	0	0.0%	0	0.0%	0	0.0%	0	0.0%	0	0.0%	0	0.0%	0	0.0%	1	0.0%	1	25.0%	0	0.0%	0	0.0%	0	0.0%	0	0.0%	0	0.0%	0	0.0%	0	0.0%	0	0.0%
18th	102	26	25.5%	19	18.6%	0	0.0%	0	0.0%	2	2.0%	0	0.0%	0	0.0%	0	0.0%	9	8.8%	41	40.2%	1	1.0%	0	0.0%	1	1.0%	0	0.0%	0	0.0%	0	0.0%	0	0.0%	3	2.9%
Central Total	249	70	28%	33	13%	5	2.0%	2	0.8%	0	0.0%	6	2.4%	0	0.0%	0	0.0%	27	11%	83	33%	1	0.4%	0	0.0%	1	0.4%	0	0.0%	0	0.0%	0	0.0%	21	8.4%		
Northeast Region																																					
8th	30	2	6.7%	4	13.3%	0	0.0%	0	0.0%	0	0.0%	0	0.0%	0	0.0%	0	0.0%	4	13.3%	8	26.7%	0	0.0%	0	0.0%	0	0.0%	0	0.0%	0	0.0%	0	0.0%	0	0.0%	12	40.0%
13th	6	0	0.0%	2	33.3%	0	0.0%	0	0.0%	0	0.0%	0	0.0%	0	0.0%	0	0.0%	0	0.0%	2	33.3%	0	0.0%	0	0.0%	0	0.0%	0	0.0%	0	0.0%	0	0.0%	2	33.3%		
17th	53	14	26.4%	10	18.9%	0	0.0%	1	1.9%	0	0.0%	0	0.0%	0	0.0%	0	0.0%	3	5.7%	20	37.7%	0	0.0%	0	0.0%	0	0.0%	0	0.0%	0	0.0%	0	0.0%	6	11.3%		
19th	58	13	22.4%	12	20.7%	13	22.4%	1	1.7%	0	0.0%	2	3.4%	4	6.9%	0	0.0%	7	12.1%	6	10.3%	0	0.0%	0	0.0%	0	0.0%	0	0.0%	0	0.0%	0	0.0%	0	0.0%	0	0.0%
20th	28	4	14.3%	3	10.7%	1	3.6%	0	0.0%	0	0.0%	0	0.0%	0	0.0%	0	0.0%	1	3.6%	5	17.9%	0	0.0%	0	0.0%	0	0.0%	0	0.0%	0	0.0%	0	0.0%	14	50.0%		
Northeast Total	175	33	19%	31	18%	14	8.0%	2	1.1%	0	0.0%	2	1.1%	4	2.3%	0	0.0%	15	8.6%	41	23%	0	0.0%	0	0.0%	0	0.0%	0	0.0%	0	0.0%	0	0.0%	33	19%		
Southern Region																																					
3rd	2	0	0.0%	2	100%	0	0.0%	0	0.0%	0	0.0%	0	0.0%	0	0.0%	0	0.0%	0	0.0%	0	0.0%	0	0.0%	0	0.0%	0	0.0%	0	0.0%	0	0.0%	0	0.0%	0	0.0%	0	0.0%
4th	78	17	21.8%	15	19.2%	9	11.5%	1	1.3%	0	0.0%	1	1.3%	0	0.0%	0	0.0%	6	7.7%	21	26.9%	0	0.0%	0	0.0%	0	0.0%	0	0.0%	0	0.0%	3	3.8%	1	1.3%	4	5.1%
10th	40	3	7.5%	1	2.5%	1	2.5%	1	2.5%	0	0.0%	6	15.0%	0	0.0%	0	0.0%	11	27.5%	8	20.0%	0	0.0%	0	0.0%	0	0.0%	0	0.0%	0	0.0%	0	0.0%	0	0.0%	9	22.5%
11th	8	2	25.0%	1	12.5%	1	12.5%	0	0.0%	0	0.0%	0	0.0%	0	0.0%	0	0.0%	0	0.0%	1	12.5%	0	0.0%	0	0.0%	0	0.0%	0	0.0%	0	0.0%	0	0.0%	3	37.5%		
12th	5	2	40.0%	0	0.0%	0	0.0%	0	0.0%	0	0.0%	0	0.0%	0	0.0%	0	0.0%	1	20.0%	2	40.0%	0	0.0%	0	0.0%	0	0.0%	0	0.0%	0	0.0%	0	0.0%	0	0.0%	0	0.0%
15th	2	0	0.0%	0	0.0%	0	0.0%	0	0.0%	0	0.0%	0	0.0%	0	0.0%	0	0.0%	0	0.0%	2	100%	0	0.0%	0	0.0%	0	0.0%	0	0.0%	0	0.0%	0	0.0%	0	0.0%	0	0.0%
16th	2	0	0.0%	0	0.0%	0	0.0%	0	0.0%	0	0.0%	0	0.0%	0	0.0%	0	0.0%	0	0.0%	2	100%	0	0.0%	0	0.0%	0	0.0%	0	0.0%	0	0.0%	0	0.0%	0	0.0%	0	0.0%
Southern Total	137	24	18%	19	14%	11	8.0%	2	1.5%	0	0.0%	7	5.1%	0	0.0%	0	0.0%	18	13%	36	26%	0	0.0%	0	0.0%	0	0.0%	0	0.0%	3	2.2%	1	0.7%	16	12%		
Western Region																																					
6th	3	0	0.0%	0	0.0%	0	0.0%	0	0.0%	0	0.0%	0	0.0%	0	0.0%	0	0.0%	0	0.0%	0	0.0%	0	0.0%	0	0.0%	0	0.0%	0	0.0%	0	0.0%	0	0.0%	3	100%		
7th	4	2	50.0%	0	0.0%	0	0.0%	0	0.0%	0	0.0%	0	0.0%	0	0.0%	0	0.0%	0	0.0%	2	50.0%	0	0.0%	0	0.0%	0	0.0%	0	0.0%	0	0.0%	0	0.0%	0	0.0%	0	0.0%
9th	3	1	33.3%	0	0.0%	0	0.0%	0	0.0%	0	0.0%	0	0.0%	0	0.0%	0	0.0%	0	0.0%	0	0.0%	0	0.0%	0	0.0%	0	0.0%	0	0.0%	0	0.0%	0	0.0%	2	66.7%		
14th	3	0	0.0%	0	0.0%	0	0.0%	0	0.0%	0	0.0%	0	0.0%	1	33.3%	0	0.0%	0	0.0%	0	0.0%	0	0.0%	0	0.0%	0	0.0%	0	0.0%	0	0.0%	0	0.0%	2	66.7%		
21st	16	5	31.3%	3	18.8%	0	0.0%	0	0.0%	0	0.0%	1	6.3%	0	0.0%	0	0.0%	1	6.3%	4	25.0%	0	0.0%	0	0.0%	0	0.0%	0	0.0%	0	0.0%	0	0.0%	2	12.5%		
22nd	2	0	0.0%	0	0.0%	0	0.0%	0	0.0%	0	0.0%	1	50.0%	0	0.0%	0	0.0%	1	50.0%	0	0.0%	0	0.0%	0	0.0%	0	0.0%	0	0.0%	0	0.0%	0	0.0%	0	0.0%	0	0.0%
Western Total	31	8	26%	3	9.7%	0	0.0%	0	0.0%	0	0.0%	2	6.5%	1	3.2%	0	0.0%	2	6.5%	6	19%	0	0.0%	0	0.0%	0	0.0%	0	0.0%	0	0.0%	0	0.0%	9	29%		
Individual RD Totals	592	135	23%	86	15%	30	5.1%	6	1.0%	0	0.0%	17	2.9%	7	1.2%	0	0.0%	62	10%	166	28%	1	0.2%	0	0.0%	1	0.2%	0	0.0%	3	0.5%	1	0.2%	77	13%		
Statewide Totals	592	221	37.3%	36	6.1%	24												228	38.5%	2		0.3%		4	0.7%	77	13%										

Central Region

SB94 Reason Detained by Judicial District

March 2015 New Admits



■ CENTRAL REGION, 249 New Admits

■ 5th JD, 4 New Admits

■ 18th JD, 102 New Admits

■ 1st JD, 56 New Admits

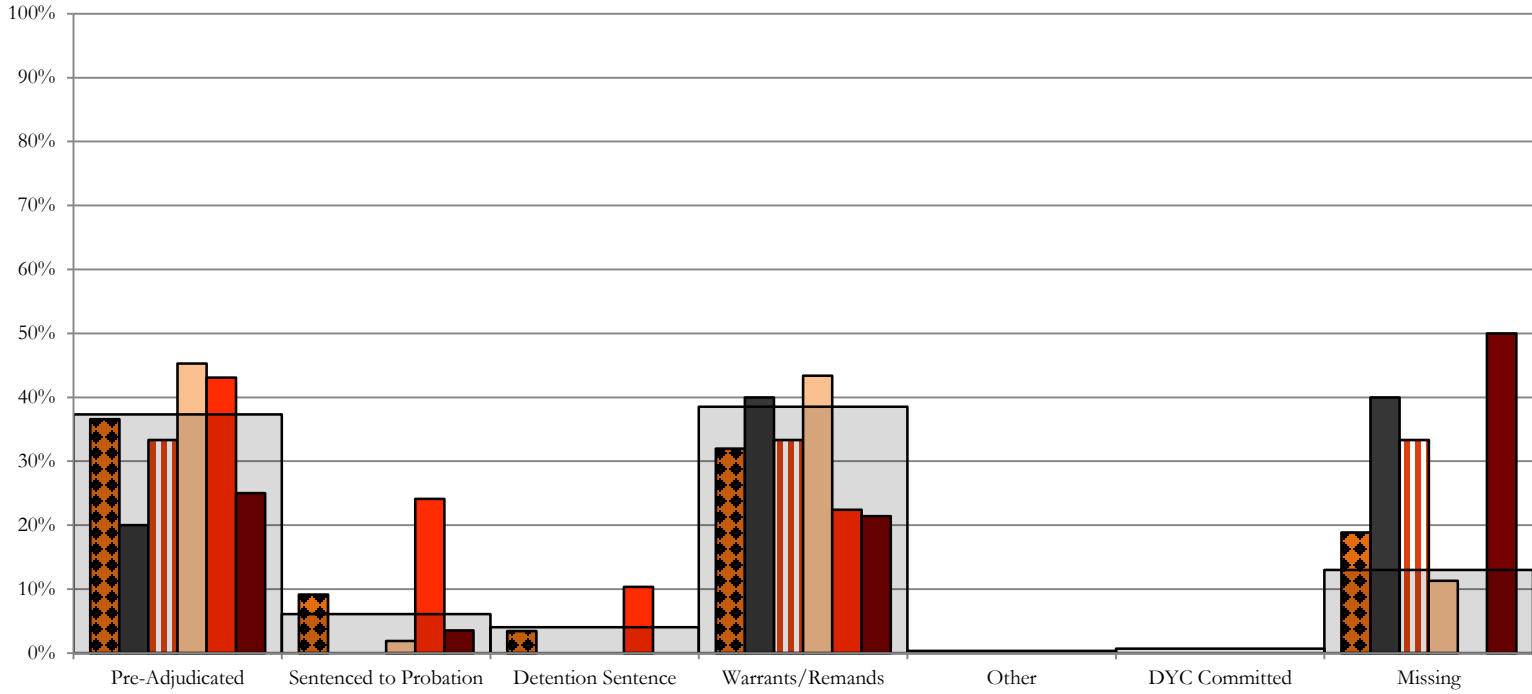
■ 2nd JD, 87 New Admits

■ STATEWIDE, 592 New Admits

Northeast Region

SB94 Reason Detained by Judicial District

March 2015 New Admits

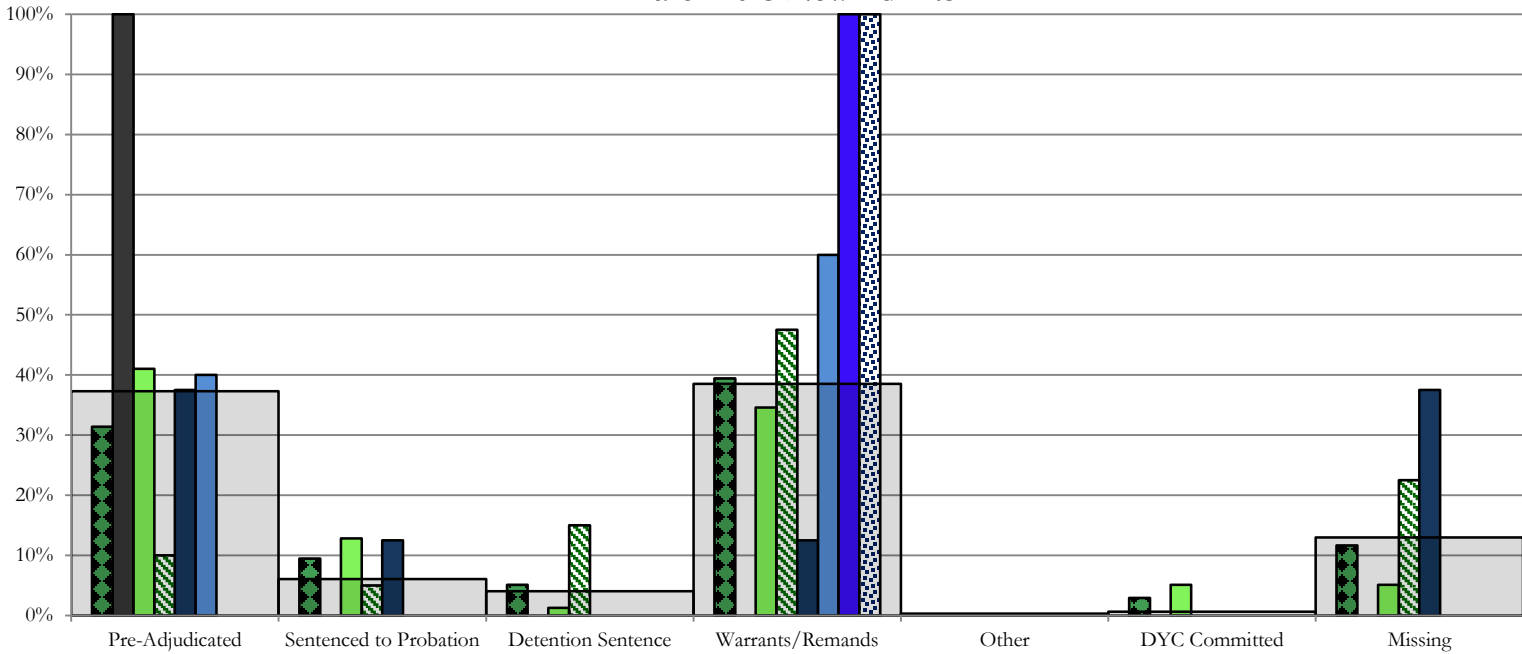


- NORTHEAST REGION, 175 New Admits
- 8th JD, 30 New Admits
- 13th JD, 6 New Admits
- 19th JD, 58 New Admits
- 20th JD, 28 New Admits
- STATEWIDE, 592 New Admits

Southern Region

SB94 Reason Detained by Judicial District

March 2015 New Admits

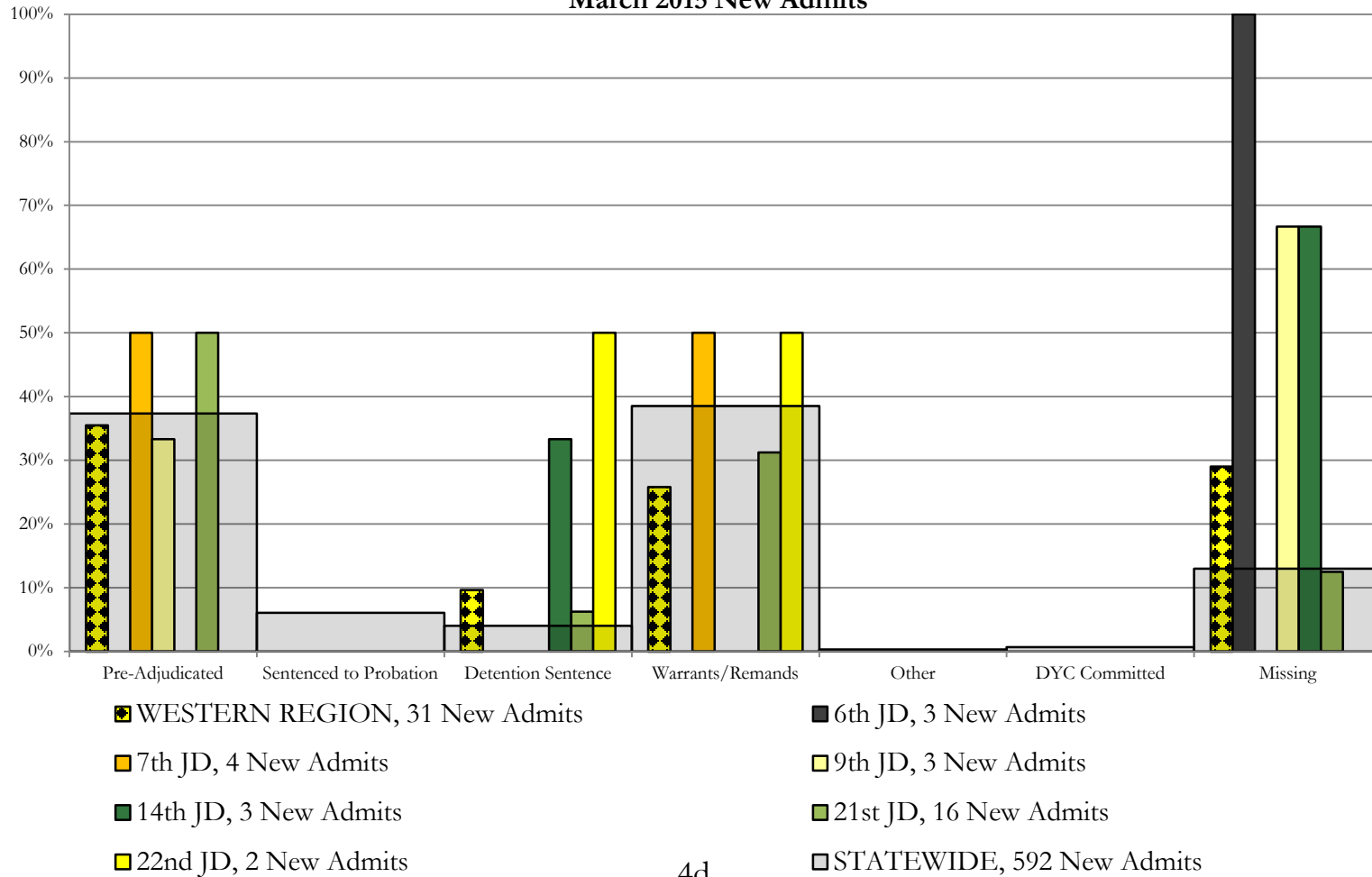


- SOUTHERN REGION, 137 New Admits
- 3rd JD, 2 New Admits
- 4th JD, 78 New Admits
- 10th JD, 40 New Admits
- 11th JD, 8 New Admits
- 12th JD, 5 New Admits
- 15th JD, 2 New Admits
- 16th JD, 2 New Admits
- STATEWIDE, 592 New Admits

Western Region

SB94 Reason Detained by Judicial District

March 2015 New Admits



March 2015 SB94 Supplemental Report

DYC Detention Maximum Youth Served by Judicial District¹

Region	JD	Detention Capacity	Detention ADP		Maximum Youth Served on a Single Day ^{2,3}			
			March 2015	YTD	March 2015		YTD	
					Number of Youth	% of Detention Capacity	Number of Youth	% of Detention Capacity
<i>Central Region</i>								
	1st	37	19.3	26.1	27	73.0%	36	97.3%
	2nd	64	52.6	52.2	64	100.0%	68	106.3%
	5th	4	1.1	2.5	2	50.0%	5	125.0%
	18th	61	49.0	49.2	58	95.1%	62	101.6%
Central Region		166	122.0	130.0	140	84.3%	154	92.8%
<i>Northeast Region</i>								
	8th	21	15.0	16.5	22	104.8%	29	138.1%
	13th	5	1.0	2.2	4	80.0%	7	140.0%
	17th	30	21.2	21.8	29	96.7%	30	100.0%
	19th	25	30.6	25.1	43	172.0%	43	172.0%
	20th	13	6.4	6.2	11	84.6%	13	100.0%
Northeast Region		94	74.1	71.7	88	93.6%	90	95.7%
<i>Southern Region</i>								
	3rd	2	0.4	0.7	1	50.0%	2	100.0%
	4th	51	40.7	36.5	49	96.1%	52	102.0%
	10th	13	12.2	11.6	18	138.5%	19	146.2%
	11th	8	2.4	2.8	4	50.0%	7	87.5%
	12th	4	2.2	1.4	4	100.0%	4	100.0%
	15th	2	0.7	1.0	2	100.0%	4	200.0%
	16th	3	1.2	1.4	2	66.7%	3	100.0%
Southern Region		83	59.9	55.5	72	86.7%	72	86.7%
<i>Western Region</i>								
	6th	5	1.5	2.5	3	60.0%	6	120.0%
	7th	7	5.6	4.3	6	85.7%	7	100.0%
	9th	6	3.8	2.6	6	100.0%	7	116.7%
	14th	3	1.4	1.0	2	66.7%	4	133.3%
	21st	14	7.8	11.1	12	85.7%	19	135.7%
	22nd	4	4.5	1.8	6	150.0%	6	150.0%
Western Region		39	24.5	23.2	31	79.5%	33	84.6%
<i>Missing JD or Multiple JDs</i>			1.6	1.3				
Statewide		382	282.1	281.6	308	80.6%	322	84.3%

¹ Maximum youth served is the highest number of youth in detention on a single day during the month or fiscal year.

² Regional figures are not the sum of judicial districts, but represent the maximum count on one day for the entire region.

³ State figures are not the sum of regional figures, but represent the maximum count on one day for the entire state.

March 2015

SB94 Supplemental Report

SB94 Community ADP by Judicial District

Region	JD	Pre-Adjudicated		Sentenced		Total Pre-Adjudicated and Sentenced	
		March 2015	YTD	March 2015	YTD	March 2015	YTD
<i>Central Region</i>							
	1st	160.7	120.5	6.8	12.8	167.5	133.4
	2nd	254.0	171.3	72.9	57.0	326.8	228.3
	5th	7.7	6.7	21.0	27.3	28.7	34.1
	18th	287.3	231.1	19.9	18.5	307.1	249.6
Central Total		709.6	529.7	120.5	115.6	830.1	645.3
<i>Northeast Region</i>							
	8th	39.2	46.2	9.7	24.4	48.9	70.7
	13th	24.8	22.9	15.2	14.1	40.0	37.0
	17th	94.7	71.4	37.0	42.1	131.7	113.5
	19th	60.8	47.0	45.4	33.5	106.2	80.5
	20th	42.2	38.4	35.0	32.2	77.2	70.6
Northeast Total		261.7	225.9	142.4	146.4	404.1	372.3
<i>Southern Region</i>							
	3rd	2.6	2.8	6.0	6.3	8.6	9.1
	4th	108.9	83.0	51.9	44.1	160.8	127.2
	10th	17.0	21.1	56.4	27.5	73.4	48.7
	11th	15.4	12.0	39.5	33.7	55.0	45.7
	12th	5.6	5.0	6.8	6.9	12.4	11.9
	15th	5.3	4.9	8.0	8.4	13.3	13.3
	16th	1.8	1.5	13.0	11.6	14.8	13.2
Southern Total		156.6	130.4	181.6	138.6	338.2	269.0
<i>Western Region</i>							
	6th	16.5	10.6	0.0	0.8	16.5	11.4
	7th	10.8	12.2	17.1	16.8	27.9	28.9
	9th	11.1	7.7	4.3	2.0	15.4	9.6
	14th	3.7	3.4	5.0	3.5	8.7	6.9
	21st	39.3	45.7	5.5	6.5	44.8	52.2
	22nd	6.8	6.9	1.2	1.2	8.0	8.1
Western Total		88.2	86.5	33.2	30.6	121.3	117.2
Statewide Total		1216.1	972.5	477.7	431.3	1693.7	1403.7