

February 2015 FY 2014-2015 SB94 JDSAG SUPPLEMENTAL REPORT

Prepared by the Division of Youth Corrections (DYC)
Research and Evaluation Unit
March 19, 2015



COLORADO
**Office of Children,
Youth & Families**
Division of Youth Corrections

February 2015 SB94 Supplemental Report

DYC Commitment ADP & New Commitments by Judicial District

Region	JD ¹	2015 Population Estimates ²	ADP ³		New Commitments		
			February 2015	YTD	February 2015	YTD	YTD Rate ⁴
<i>Central Region</i>							
	1st	54,562	62.6	70.2	3	22	4.0
	2nd	58,395	146.0	150.0	5	41	7.0
	5th	10,073	10.0	7.8	0	4	4.0
	18th	115,459	82.9	92.7	1	30	2.6
Central Total		238,489	301.5	320.6	9	97	4.1
<i>Northeast Region</i>							
	8th	31,146	40.9	37.0	1	17	5.5
	13th	8,509	12.3	15.5	0	4	4.7
	17th	66,724	83.1	81.5	10	45	6.7
	19th	34,214	53.9	56.0	2	30	8.8
	20th	31,597	9.8	9.7	0	3	0.9
Northeast Total		172,190	199.9	199.8	13	99	5.7
<i>Southern Region</i>							
	3rd	1,993	3.9	2.6	0	2	10.0
	4th	79,018	106.3	107.6	2	26	3.3
	10th	18,161	22.5	25.0	0	7	3.9
	11th	7,322	10.0	11.1	0	4	5.5
	12th	5,216	4.7	7.1	0	0	0.0
	15th	2,182	2.8	2.3	0	0	0.0
	16th	2,902	3.0	3.3	0	1	3.4
Southern Total		116,794	153.2	159.0	2	40	3.4
<i>Western Region</i>							
	6th	6,346	14.6	14.0	0	5	7.9
	7th	10,564	9.8	9.7	0	2	1.9
	9th	9,448	7.1	9.5	0	1	1.1
	14th	5,479	2.6	1.4	0	2	3.7
	21st	15,437	29.0	27.2	4	13	8.4
	22nd	3,013	5.0	6.6	0	0	0.0
Western Total		50,287	68.2	68.4	4	23	4.6
Statewide Total		577,760	722.8	747.8	28	259	4.5

¹ JD represents the judicial district in which the client was committed. Regional totals are a sum of their respective judicial districts. Regional totals reported here may differ slightly from those reported in the Monthly Population Report, where region is defined by active caseloads.

² Source: DOLA 2015 Estimates

³ Due to rounding, totals shown may not be an exact sum of the subtotals.

⁴ Per 10,000 youth in the population

February 2015 SB94 Supplemental Report

DYC Detention ADP and New Detention Admissions by Judicial District

Region	JD	2015 Population Estimates ¹	ADP		New Admits		
			February 2015	YTD	February 2015	YTD	YTD New Admit Rate ²
<i>Central Region</i>							
	1st	54,562	24.8	27.0	53	455	83.4
	2nd	58,395	50.1	52.1	88	719	123.1
	5th	10,073	0.6	2.6	3	22	21.8
	18th	115,459	48.3	49.2	100	844	73.1
Central Total		238,489	123.8	131.0	244	2,040	85.5
<i>Northeast Region</i>							
	8th	31,146	16.6	16.6	35	310	99.5
	13th	8,509	1.7	2.3	9	58	68.2
	17th	66,724	23.1	21.9	46	340	51.0
	19th	34,214	23.7	24.4	55	401	117.2
	20th	31,597	6.1	6.1	29	225	71.2
Northeast Total		172,190	71.0	71.4	174	1,334	77.5
<i>Southern Region</i>							
	3rd	1,993	0.3	0.8	1	11	55.2
	4th	79,018	33.2	36.0	55	509	64.4
	10th	18,161	11.1	11.6	32	251	138.2
	11th	7,322	1.5	2.9	11	88	120.2
	12th	5,216	0.5	1.3	2	32	61.3
	15th	2,182	0.4	1.0	1	19	87.1
	16th	2,902	1.5	1.4	1	12	41.4
Southern Total		116,794	48.6	55.0	103	922	78.9
<i>Western Region</i>							
	6th	6,346	1.1	2.6	3	36	56.7
	7th	10,564	4.1	4.1	4	37	35.0
	9th	9,448	2.7	2.5	4	32	33.9
	14th	5,479	2.5	0.9	3	18	32.9
	21st	15,437	10.2	11.5	16	136	88.1
	22nd	3,013	3.6	1.5	4	21	69.7
Western Total		50,287	24.2	23.0	34	280	55.7
<i>Missing JD or Multiple JDs</i>			1.7	1.2			
Statewide Total		577,760	269.3	281.5	555	4,576	79.2

¹ Source: DOLA 2015 Estimates

² Per 10,000 youth in the population

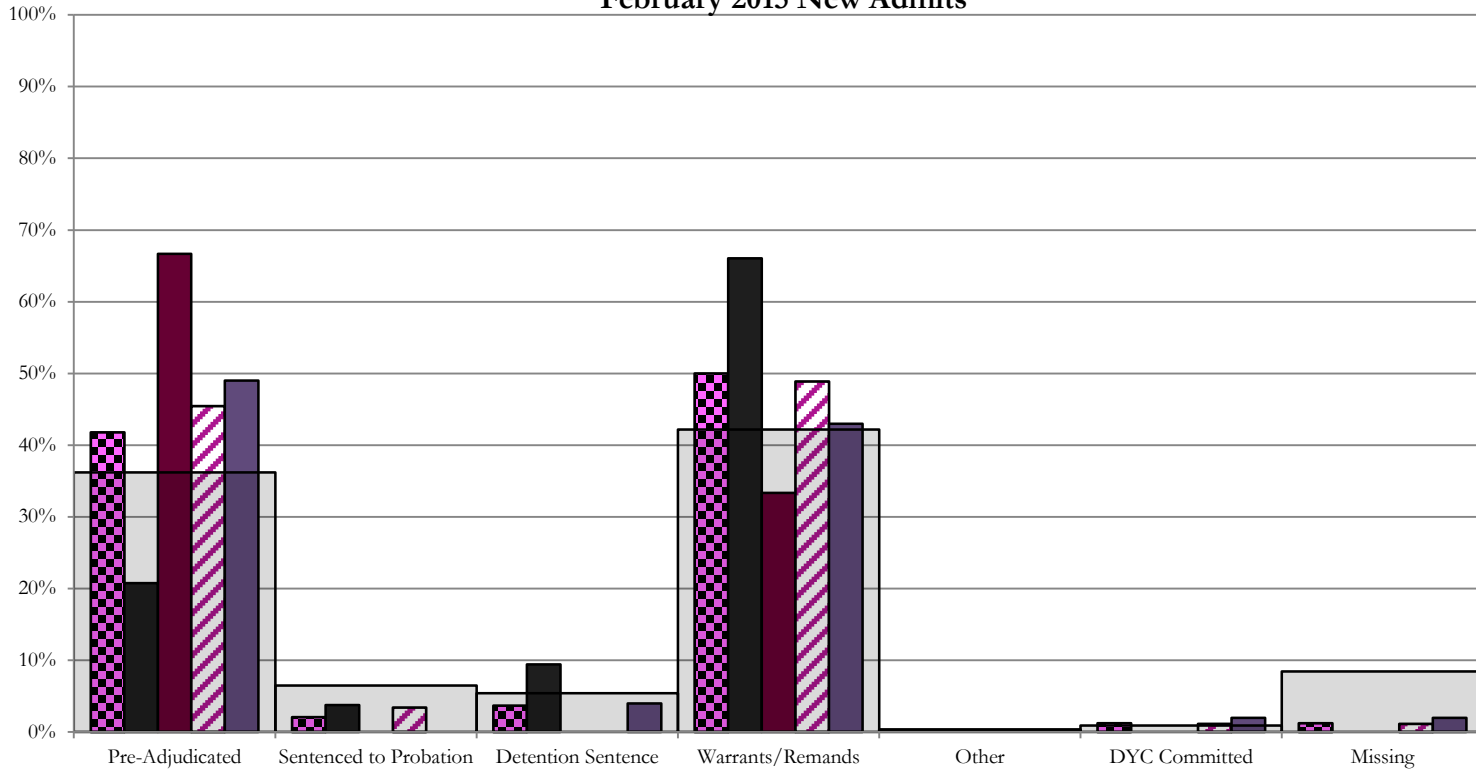
February 2015 SB94 Supplemental Report

DYC Detention LOS by Judicial District				
Region	JD	YTD Detention Releases	YTD LOS (days)	LOS (days) Compared to State AVG
<i>Central Region</i>				
	1st	452	14.2	-0.7
	2nd	720	17.9	3.0
	5th	22	30.9	15.9
	18th	841	12.6	-2.3
Central Total		2,035	15.0	0.1
<i>Northeast Region</i>				
	8th	300	12.5	-2.4
	13th	57	10.5	-4.5
	17th	342	16.1	1.2
	19th	399	13.9	-1.1
	20th	220	6.0	-9.0
Northeast Total		1,318	12.7	-2.3
<i>Southern Region</i>				
	3rd	12	15.4	0.4
	4th	507	15.6	0.7
	10th	251	14.2	-0.8
	11th	89	7.3	-7.6
	12th	29	10.1	-4.8
	15th	20	13.3	-1.7
	16th	13	24.8	9.8
Southern Total		921	14.3	-0.6
<i>Western Region</i>				
	6th	37	16.0	1.0
	7th	32	22.8	7.8
	9th	26	18.3	3.4
	14th	16	10.3	-4.7
	21st	124	16.2	1.2
	22nd	16	12.4	-2.6
Western Total		251	16.6	1.6
Statewide Total		4,528	14.9	-

Central Region

SB94 Reason Detained by Judicial District

February 2015 New Admits



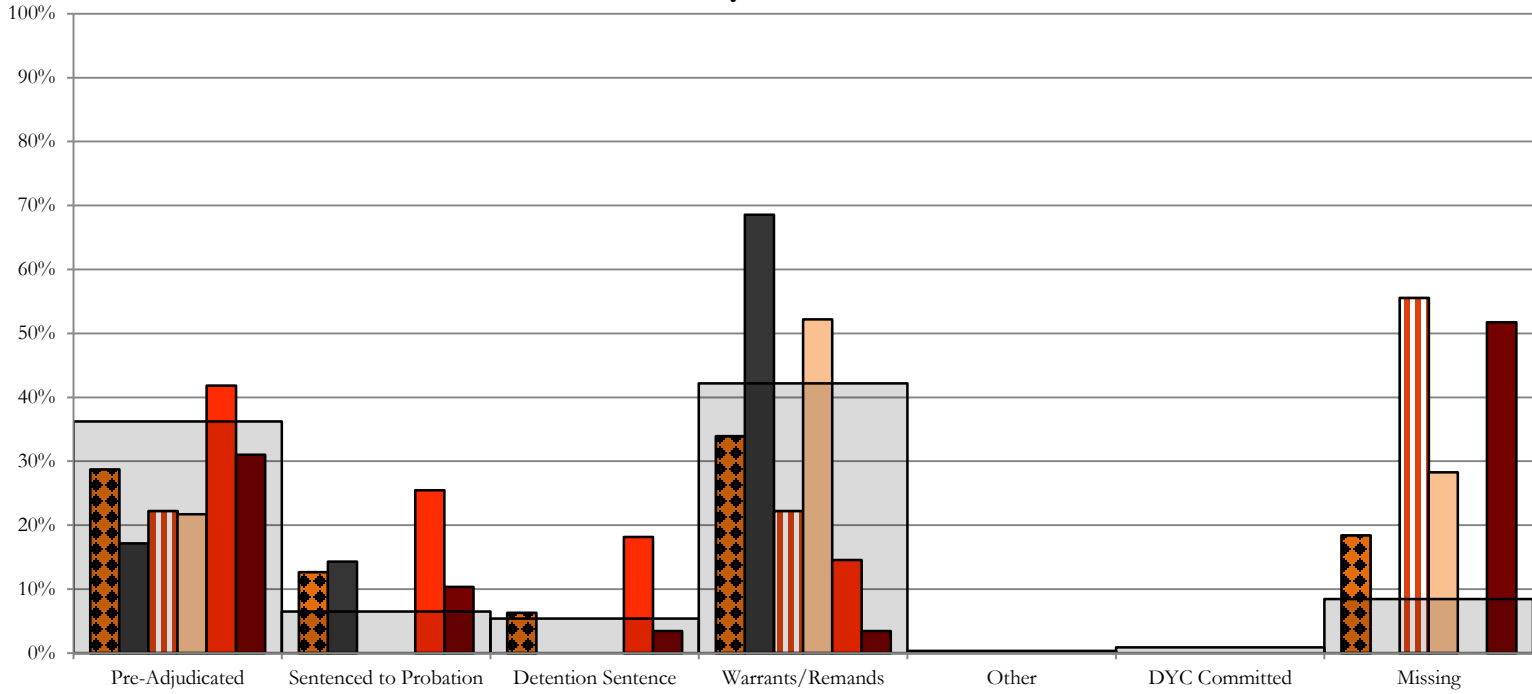
CENTRAL REGION, 244 New Admits
 5th JD, 3 New Admits
 18th JD, 100 New Admits

1st JD, 53 New Admits
 2nd JD, 88 New Admits
 STATEWIDE, 555 New Admits

Northeast Region

SB94 Reason Detained by Judicial District

February 2015 New Admits

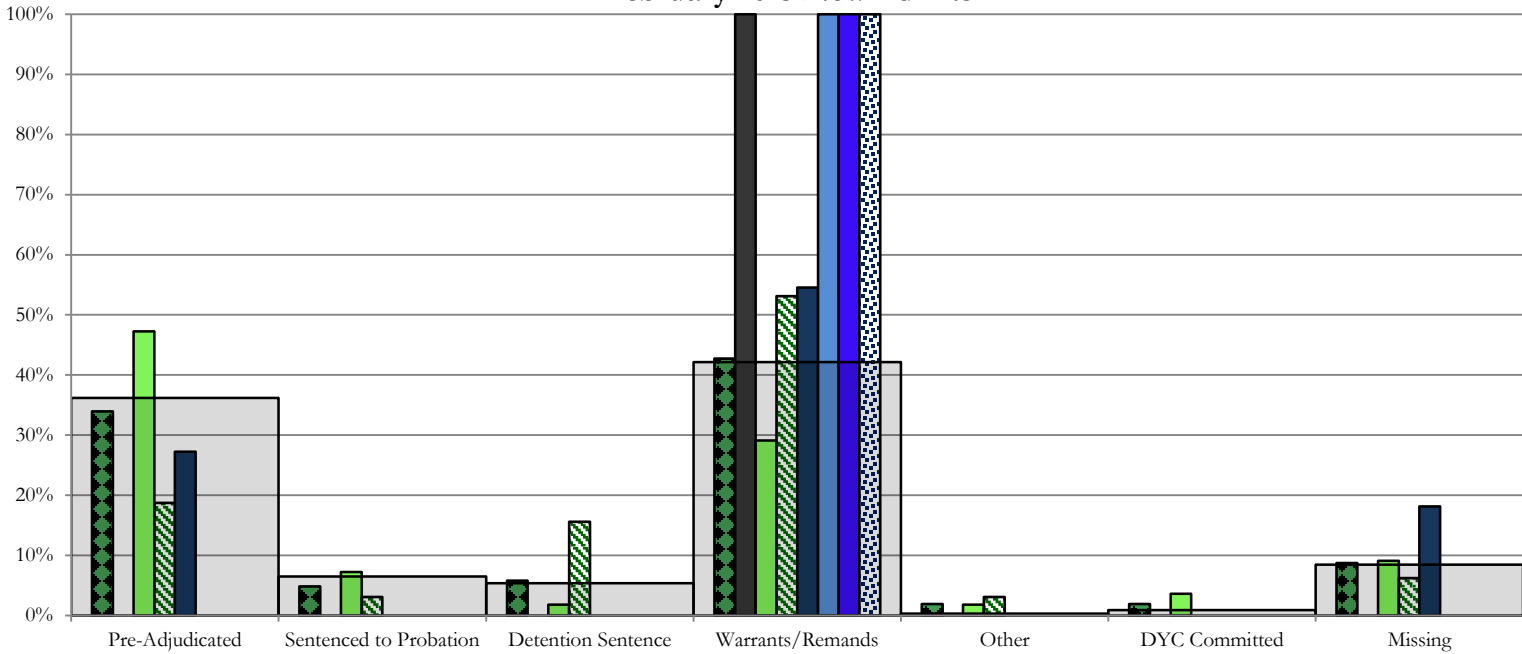


- NORTHEAST REGION, 174 New Admits
- 8th JD, 35 New Admits
- 13th JD, 9 New Admits
- 17th JD, 46 New Admits
- 19th JD, 55 New Admits
- 20th JD, 29 New Admits
- STATEWIDE, 555 New Admits

Southern Region

SB94 Reason Detained by Judicial District

February 2015 New Admits

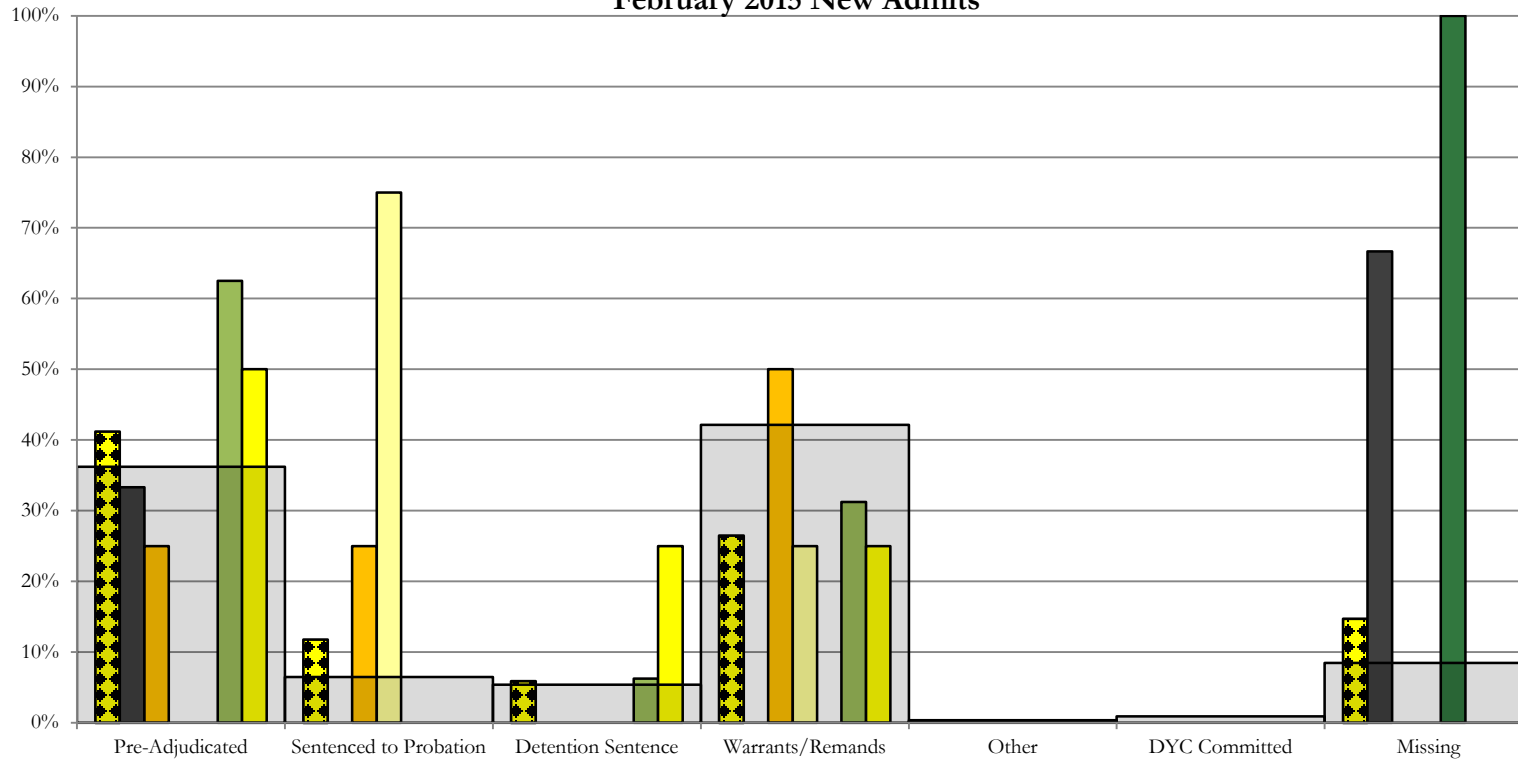


- SOUTHERN REGION, 103 New Admits
- 4th JD, 55 New Admits
- 11th JD, 11 New Admits
- 15th JD, 1 New Admits
- STATEWIDE, 555 New Admits
- 3rd JD, 1 New Admits
- 10th JD, 32 New Admits
- 12th JD, 2 New Admits
- 16th JD, 1 New Admits

Western Region

SB94 Reason Detained by Judicial District

February 2015 New Admits



■ WESTERN REGION, 34 New Admits

■ 7th JD, 4 New Admits

■ 14th JD, 3 New Admits

■ 22nd JD, 4 New Admits

■ 6th JD, 3 New Admits

■ 9th JD, 4 New Admits

■ 21st JD, 16 New Admits

■ STATEWIDE, 555 New Admits

February 2015 SB94 Supplemental Report

DYC Detention Maximum Youth Served by Judicial District¹

Region	JD	Detention Capacity	Detention ADP		Maximum Youth Served on a Single Day ^{2,3}			
			February 2015	YTD	February 2015		YTD	
					Number of Youth	% of Detention Capacity	Number of Youth	% of Detention Capacity
<i>Central Region</i>								
	1st	37	24.8	27.0	32	86.5%	36	97.3%
	2nd	64	50.1	52.1	61	95.3%	68	106.3%
	5th	4	0.6	2.6	1	25.0%	5	125.0%
	18th	61	48.3	49.2	55	90.2%	62	101.6%
Central Region		166	123.8	131.0	137	82.5%	154	92.8%
<i>Northeast Region</i>								
	8th	21	16.6	16.6	22	104.8%	29	138.1%
	13th	5	1.7	2.3	3	60.0%	7	140.0%
	17th	30	23.1	21.9	27	90.0%	30	100.0%
	19th	25	23.7	24.4	34	136.0%	34	136.0%
	20th	13	6.1	6.1	9	69.2%	13	100.0%
Northeast Region		94	71.0	71.4	90	95.7%	90	95.7%
<i>Southern Region</i>								
	3rd	2	0.3	0.8	1	50.0%	2	100.0%
	4th	51	33.2	36.0	38	74.5%	52	102.0%
	10th	13	11.1	11.6	16	123.1%	19	146.2%
	11th	8	1.5	2.9	3	37.5%	7	87.5%
	12th	4	0.5	1.3	3	75.0%	4	100.0%
	15th	2	0.4	1.0	1	50.0%	4	200.0%
	16th	3	1.5	1.4	2	66.7%	3	100.0%
Southern Region		83	48.6	55.0	57	68.7%	72	86.7%
<i>Western Region</i>								
	6th	5	1.1	2.6	2	40.0%	6	120.0%
	7th	7	4.1	4.1	5	71.4%	7	100.0%
	9th	6	2.7	2.5	5	83.3%	7	116.7%
	14th	3	2.5	0.9	4	133.3%	4	133.3%
	21st	14	10.2	11.5	14	100.0%	19	135.7%
	22nd	4	3.6	1.5	6	150.0%	6	150.0%
Western Region		39	24.2	23.0	31	79.5%	33	84.6%
<i>Missing JD or Multiple JDs</i>			1.7	1.2				
Statewide		382	269.3	281.5	291	76.2%	322	84.3%

¹ Maximum youth served is the highest number of youth in detention on a single day during the month or fiscal year.

² Regional figures are not the sum of judicial districts, but represent the maximum count on one day for the entire region.

³ State figures are not the sum of regional figures, but represent the maximum count on one day for the entire state.

February 2015

SB94 Supplemental Report

SB94 Community ADP by Judicial District

Region	JD	Pre-Adjudicated		Sentenced		Total Pre-Adjudicated and Sentenced	
		February 2015	YTD	February 2015	YTD	February 2015	YTD
<i>Central Region</i>							
	1st	140.6	115.3	12.8	13.6	153.4	128.9
	2nd	223.8	160.8	56.4	55.0	280.2	215.8
	5th	6.7	6.7	20.0	27.8	26.7	34.5
	18th	283.3	231.8	19.1	18.8	302.4	250.7
Central Total		654.3	514.6	108.3	115.2	762.6	629.9
<i>Northeast Region</i>							
	8th	49.1	47.2	16.1	26.3	65.3	73.5
	13th	45.4	41.0	32.0	26.4	77.4	67.4
	17th	79.3	68.6	39.4	43.4	118.7	112.0
	19th	57.9	45.5	35.3	33.2	93.1	78.7
	20th	37.1	37.2	29.3	29.1	66.5	66.3
Northeast Total		268.9	239.5	152.1	158.4	421.0	397.9
<i>Southern Region</i>							
	3rd	2.0	2.8	6.0	6.3	8.0	9.1
	4th	94.2	79.7	46.3	42.9	140.5	122.5
	10th	22.0	22.5	45.3	24.2	67.3	46.8
	11th	19.5	12.9	44.5	34.0	64.1	46.9
	12th	6.0	5.0	10.6	7.3	16.6	12.3
	15th	7.3	6.0	8.0	7.7	15.3	13.8
	16th	1.0	1.5	13.0	11.5	14.0	13.0
Southern Total		152.2	130.5	173.7	133.9	325.9	264.4
<i>Western Region</i>							
	6th	16.0	9.9	0.0	0.9	16.0	10.8
	7th	11.0	12.6	17.3	16.2	28.3	28.8
	9th	9.6	7.2	3.8	1.8	13.3	9.0
	14th	4.0	3.4	4.4	3.3	8.4	6.7
	21st	41.6	46.7	4.0	6.3	45.6	52.9
	22nd	5.6	6.9	2.4	1.1	8.0	8.1
Western Total		87.8	86.7	31.9	29.6	119.7	116.2
Statewide Total		1163.1	971.3	466.1	437.1	1629.2	1408.4