

January 2015 FY 2014-2015 SB94 JDSAG SUPPLEMENTAL REPORT

Prepared by the Division of Youth Corrections (DYC)
Research and Evaluation Unit
February 24, 2015



COLORADO

**Office of Children,
Youth & Families**

Division of Youth Corrections

January 2015 SB94 Supplemental Report

DYC Commitment ADP & New Commitments by Judicial District

Region	JD ¹	2015 Population Estimates ²	ADP ³		New Commitments		
			January 2015	YTD	January 2015	YTD	YTD Rate ⁴
<i>Central Region</i>							
	1st	54,562	65.2	71.1	1	19	3.5
	2nd	58,395	142.7	150.4	4	36	6.2
	5th	10,073	8.2	7.5	1	4	4.0
	18th	115,459	86.9	93.9	4	29	2.5
Central Total		238,489	302.9	322.9	10	88	3.7
<i>Northeast Region</i>							
	8th	31,146	39.0	36.5	3	16	5.1
	13th	8,509	14.9	15.9	0	4	4.7
	17th	66,724	80.5	81.3	5	34	5.1
	19th	34,214	54.6	56.3	3	28	8.2
	20th	31,597	10.0	9.7	0	3	0.9
Northeast Total		172,190	199.1	199.8	11	85	4.9
<i>Southern Region</i>							
	3rd	1,993	3.3	2.4	1	2	10.0
	4th	79,018	109.8	107.7	1	24	3.0
	10th	18,161	22.5	25.4	1	7	3.9
	11th	7,322	11.0	11.3	0	4	5.5
	12th	5,216	4.9	7.4	0	0	0.0
	15th	2,182	2.3	2.3	0	0	0.0
	16th	2,902	3.0	3.3	0	1	3.4
Southern Total		116,794	156.7	159.8	3	38	3.3
<i>Western Region</i>							
	6th	6,346	14.5	14.0	0	5	7.9
	7th	10,564	10.0	9.7	0	2	1.9
	9th	9,448	7.7	9.8	1	1	1.1
	14th	5,479	2.0	1.2	0	1	1.8
	21st	15,437	27.6	27.0	1	9	5.8
	22nd	3,013	6.0	7.5	0	0	0.0
Western Total		50,287	67.7	69.2	2	18	3.6
Statewide Total		577,760	726.4	751.8	26	229	4.0

¹ JD represents the judicial district in which the client was committed. Regional totals are a sum of their respective judicial districts. Regional totals reported here may differ slightly from those reported in the Monthly Population Report, where region is defined by active caseloads.

² Source: DOLA 2015 Estimates

³ Due to rounding, totals shown may not be an exact sum of the subtotals.

⁴ Per 10,000 youth in the population

January 2015 SB94 Supplemental Report

DYC Detention ADP and New Detention Admissions by Judicial District

Region	JD	2015 Population Estimates ¹	ADP		New Admits		
			January 2015	YTD	January 2015	YTD	YTD New Admit Rate ²
<i>Central Region</i>							
	1st	54,562	25.6	27.3	55	402	73.7
	2nd	58,395	47.2	52.4	84	631	108.1
	5th	10,073	1.9	2.9	2	19	18.9
	18th	115,459	47.5	49.3	116	744	64.4
Central Total		238,489	122.2	131.9	257	1,796	75.3
<i>Northeast Region</i>							
	8th	31,146	10.5	16.7	30	275	88.3
	13th	8,509	4.3	2.4	4	49	57.6
	17th	66,724	18.5	21.7	53	294	44.1
	19th	34,214	22.2	24.5	49	344	100.5
	20th	31,597	5.5	6.1	29	196	62.0
Northeast Total		172,190	60.9	71.4	165	1,158	67.3
<i>Southern Region</i>							
	3rd	1,993	0.6	0.8	1	10	50.2
	4th	79,018	30.2	36.3	58	454	57.5
	10th	18,161	10.5	11.6	27	219	120.6
	11th	7,322	1.9	3.0	5	77	105.2
	12th	5,216	2.1	1.4	7	30	57.5
	15th	2,182	0.3	1.1	2	18	82.5
	16th	2,902	1.5	1.4	2	11	37.9
Southern Total		116,794	47.0	55.8	102	819	70.1
<i>Western Region</i>							
	6th	6,346	2.5	2.8	4	33	52.0
	7th	10,564	4.8	4.1	3	33	31.2
	9th	9,448	2.9	2.4	4	28	29.6
	14th	5,479	0.5	0.7	4	15	27.4
	21st	15,437	7.5	11.6	16	120	77.7
	22nd	3,013	3.2	1.2	4	17	56.4
Western Total		50,287	21.4	22.8	35	246	48.9
<i>Missing JD or Multiple JDs</i>			<i>0.8</i>	<i>1.1</i>			
Statewide Total		577,760	252.3	283.1	559	4,019	69.6

¹ Source: DOLA 2015 Estimates

² Per 10,000 youth in the population

January 2015 SB94 Supplemental Report

DYC Detention LOS by Judicial District				
Region	JD	YTD Detention Releases	YTD LOS (days)	LOS (days) Compared to State AVG
<i>Central Region</i>				
	1st	400	14.4	-0.7
	2nd	635	18.0	3.0
	5th	20	33.3	18.3
	18th	743	12.8	-2.3
Central Total		1,798	15.2	0.2
<i>Northeast Region</i>				
	8th	277	12.6	-2.5
	13th	50	9.1	-5.9
	17th	298	16.3	1.2
	19th	354	14.3	-0.7
	20th	188	6.2	-8.8
Northeast Total		1,167	12.9	-2.2
<i>Southern Region</i>				
	3rd	11	16.2	1.1
	4th	449	15.6	0.6
	10th	221	13.3	-1.7
	11th	78	8.0	-7.0
	12th	26	9.7	-5.4
	15th	20	13.3	-1.8
	16th	12	23.7	8.6
Southern Total		817	14.2	-0.9
<i>Western Region</i>				
	6th	34	17.3	2.3
	7th	29	19.3	4.2
	9th	25	17.7	2.6
	14th	12	10.7	-4.4
	21st	115	16.6	1.5
	22nd	15	13.1	-1.9
Western Total		230	16.6	1.6
Statewide Total		4,012	15.1	-

January 2015
SB94 JDSAG Supplemental Report

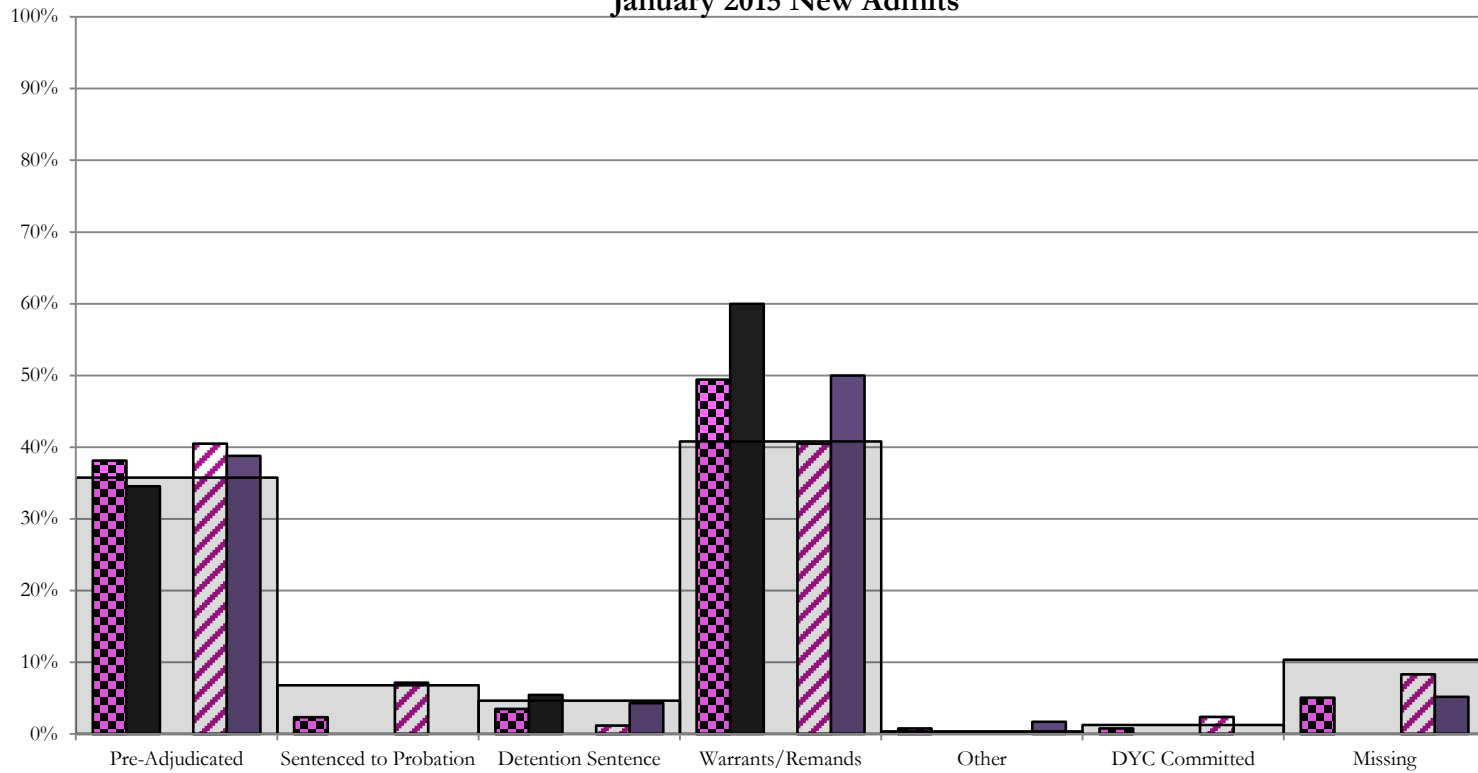
SB94 Reason Detained (RD) by Judicial District

Region	JD	Monthly New Admits	Pre-Adjudicated		Sentenced to Probation		Detention Sentence				Warrants/Remands		Other				DYC Committed		Missing																		
			Felony	Misdemeanor	Technical Violator	New Charges	Probation Sentence	Detention Sentence	Valid Court Order (VCO) Truancy	Awaiting DSS (Social Services) Placement	Failure to Appear (FTA)	Failure to Comply (FTC)	Interstate Compact on Juveniles (ICJ) Hold	Immigration Hold	No Bond Hold	Out-of-Country Warrant	Institutional	Parole	Missing																		
																				#	%	#	%	#	%	#	%	#	%	#	%	#	%	#	%	#	%
Central Region																																					
1st	55	12	21.8%	7	12.7%	0	0.0%	0	0.0%	0	0.0%	3	5.5%	0	0.0%	0	0.0%	4	7.3%	29	52.7%	0	0.0%	0	0.0%	0	0.0%	0	0.0%	0	0.0%	0	0.0%	0	0.0%		
2nd	84	27	32.1%	7	8.3%	6	7.1%	0	0.0%	0	0.0%	1	1.2%	0	0.0%	0	0.0%	8	9.5%	26	31.0%	0	0.0%	0	0.0%	0	0.0%	2	2.4%	0	0.0%	7	8.3%				
5th	2	0	0.0%	0	0.0%	0	0.0%	0	0.0%	0	0.0%	0	0.0%	0	0.0%	0	0.0%	1	0.0%	1	0.0%	0	0.0%	0	0.0%	0	0.0%	0	0.0%	0	0.0%	0	0.0%				
18th	116	19	16.4%	26	22.4%	0	0.0%	0	0.0%	0	0.0%	5	4.3%	0	0.0%	0	0.0%	12	10.3%	46	39.7%	2	1.7%	0	0.0%	0	0.0%	0	0.0%	0	0.0%	6	5.2%				
Central Total	257	58	22.6%	40	15.6%	6	2.3%	0	0.0%	0	0.0%	9	3.5%	0	0.0%	0	0.0%	25	9.7%	102	39.7%	2	0.8%	0	0.0%	0	0.0%	0	0.0%	2	0.8%	0	0.0%	13	5.1%		
Northeast Region																																					
8th	30	2	6.7%	3	10.0%	1	3.3%	0	0.0%	0	0.0%	0	0.0%	0	0.0%	0	0.0%	2	6.7%	21	70.0%	0	0.0%	0	0.0%	0	0.0%	0	0.0%	0	0.0%	0	0.0%	1	3.3%		
13th	4	2	50.0%	0	0.0%	1	25.0%	0	0.0%	0	0.0%	0	0.0%	0	0.0%	0	0.0%	0	0.0%	1	25.0%	0	0.0%	0	0.0%	0	0.0%	0	0.0%	0	0.0%	0	0.0%	0	0.0%		
17th	53	9	17.0%	4	7.5%	0	0.0%	0	0.0%	0	0.0%	0	0.0%	0	0.0%	0	0.0%	8	15.1%	19	35.8%	0	0.0%	0	0.0%	0	0.0%	0	0.0%	0	0.0%	14	26.4%				
19th	49	9	18.4%	10	20.4%	15	30.6%	0	0.0%	0	0.0%	0	0.0%	5	10.2%	0	0.0%	5	10.2%	4	8.2%	0	0.0%	0	0.0%	0	0.0%	0	0.0%	0	0.0%	1	2.0%				
20th	29	7	24.1%	2	6.9%	2	6.9%	0	0.0%	0	0.0%	0	0.0%	0	0.0%	0	0.0%	1	3.4%	3	10.3%	0	0.0%	0	0.0%	0	0.0%	0	0.0%	0	0.0%	14	48.3%				
Northeast Total	165	29	17.6%	19	11.5%	19	11.5%	0	0.0%	0	0.0%	0	0.0%	5	3.0%	0	0.0%	16	9.7%	48	29.1%	0	0.0%	0	0.0%	0	0.0%	0	0.0%	0	0.0%	0	0.0%	29	17.6%		
Southern Region																																					
3rd	1	0	0.0%	0	0.0%	0	0.0%	0	0.0%	0	0.0%	0	0.0%	0	0.0%	0	0.0%	0	0.0%	1	100.0%	0	0.0%	0	0.0%	0	0.0%	0	0.0%	0	0.0%	0	0.0%	0	0.0%		
4th	58	21	36.2%	6	10.3%	9	15.5%	1	1.7%	0	0.0%	1	1.7%	0	0.0%	0	0.0%	4	6.9%	6	10.3%	0	0.0%	0	0.0%	0	0.0%	0	0.0%	5	8.6%	0	0.0%	5	8.6%		
10th	27	3	11.1%	1	3.7%	2	7.4%	0	0.0%	0	0.0%	6	22.2%	1	3.7%	0	0.0%	7	25.9%	7	25.9%	0	0.0%	0	0.0%	0	0.0%	0	0.0%	0	0.0%	0	0.0%	0	0.0%		
11th	5	1	20.0%	1	20.0%	0	0.0%	0	0.0%	0	0.0%	1	20.0%	0	0.0%	0	0.0%	0	0.0%	0	0.0%	0	0.0%	0	0.0%	0	0.0%	0	0.0%	0	0.0%	2	40.0%				
12th	7	3	42.9%	1	14.3%	0	0.0%	0	0.0%	0	0.0%	0	0.0%	0	0.0%	0	0.0%	2	28.6%	0	0.0%	0	0.0%	0	0.0%	0	0.0%	0	0.0%	0	0.0%	1	14.3%				
15th	2	0	0.0%	0	0.0%	0	0.0%	0	0.0%	0	0.0%	0	0.0%	0	0.0%	0	0.0%	2	100.0%	0	0.0%	0	0.0%	0	0.0%	0	0.0%	0	0.0%	0	0.0%	0	0.0%				
16th	2	0	0.0%	1	50.0%	0	0.0%	0	0.0%	0	0.0%	0	0.0%	0	0.0%	0	0.0%	0	0.0%	0	0.0%	0	0.0%	0	0.0%	0	0.0%	0	0.0%	0	0.0%	1	50.0%				
Southern Total	102	28	27.5%	10	9.8%	11	10.8%	1	1.0%	0	0.0%	8	7.8%	1	1.0%	0	0.0%	11	10.8%	18	17.6%	0	0.0%	0	0.0%	0	0.0%	0	0.0%	0	0.0%	5	4.9%	0	0.0%	9	8.8%
Western Region																																					
6th	4	1	25.0%	0	0.0%	0	0.0%	0	0.0%	0	0.0%	0	0.0%	0	0.0%	0	0.0%	0	0.0%	0	0.0%	0	0.0%	0	0.0%	0	0.0%	0	0.0%	0	0.0%	3	75.0%				
7th	3	1	33.3%	0	0.0%	0	0.0%	0	0.0%	0	0.0%	0	0.0%	0	0.0%	0	0.0%	1	33.3%	0	0.0%	0	0.0%	0	0.0%	0	0.0%	0	0.0%	0	0.0%	1	33.3%				
9th	4	1	25.0%	2	50.0%	0	0.0%	0	0.0%	0	0.0%	0	0.0%	0	0.0%	0	0.0%	0	0.0%	0	0.0%	0	0.0%	0	0.0%	0	0.0%	0	0.0%	0	0.0%	1	25.0%				
14th	4	0	0.0%	0	0.0%	0	0.0%	0	0.0%	0	0.0%	0	0.0%	0	0.0%	0	0.0%	0	0.0%	1	25.0%	0	0.0%	0	0.0%	0	0.0%	0	0.0%	0	0.0%	3	75.0%				
21st	16	9	56.3%	1	6.3%	0	0.0%	0	0.0%	0	0.0%	0	0.0%	0	0.0%	0	0.0%	2	12.5%	2	12.5%	0	0.0%	0	0.0%	0	0.0%	0	0.0%	0	0.0%	2	12.5%				
22nd	4	0	0.0%	1	25.0%	1	25.0%	0	0.0%	0	0.0%	0	0.0%	0	0.0%	0	0.0%	0	0.0%	2	50.0%	0	0.0%	0	0.0%	0	0.0%	0	0.0%	0	0.0%	0	0.0%				
Western Total	35	12	34.3%	4	11.4%	1	2.9%	0	0.0%	0	0.0%	0	0.0%	0	0.0%	0	0.0%	3	8.6%	5	14.3%	0	0.0%	0	0.0%	0	0.0%	0	0.0%	0	0.0%	0	0.0%	10	28.6%		
Individual RD Totals	559	127	22.7%	73	13.1%	37	6.6%	1	0.2%	0	0.0%	17	3.0%	9	1.6%	0	0.0%	55	9.8%	173	30.9%	2	0.4%	0	0.0%	0	0.0%	0	0.0%	7	1.3%	0	0.0%	58	10.4%		
Statewide Totals	559	200	35.8%	38	6.8%	26	4.7%	228	40.8%	2	0.4%	7	1.3%	58	10.4%																						

Central Region

SB94 Reason Detained by Judicial District

January 2015 New Admits



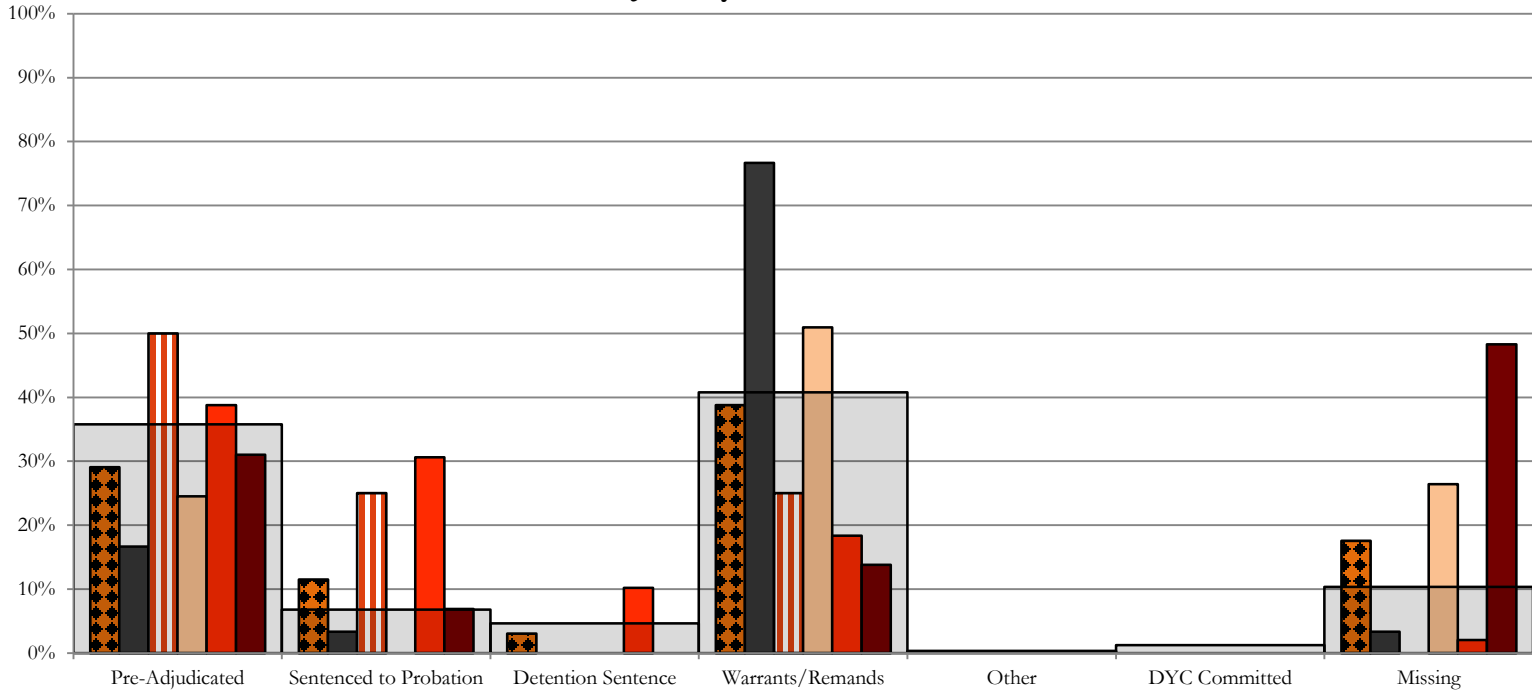
CENTRAL REGION, 257 New Admits
 5th JD, 2 New Admits
 18th JD, 116 New Admits

1st JD, 55 New Admits
 2nd JD, 84 New Admits
 STATEWIDE, 559 New Admits

Northeast Region

SB94 Reason Detained by Judicial District

January 2015 New Admits

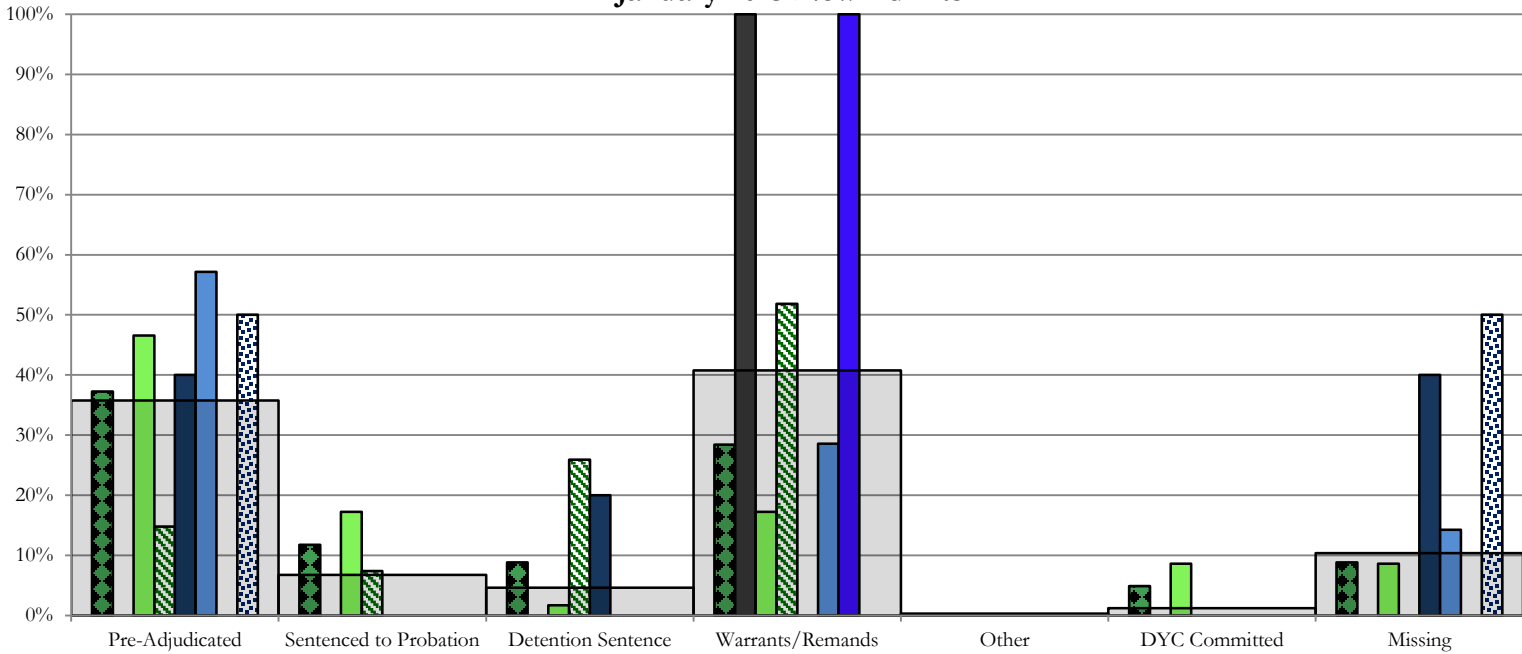


- NORTHEAST REGION, 165 New Admits
- 8th JD, 30 New Admits
- 13th JD, 4 New Admits
- 19th JD, 49 New Admits
- 20th JD, 29 New Admits
- STATEWIDE, 559 New Admits

Southern Region

SB94 Reason Detained by Judicial District

January 2015 New Admits

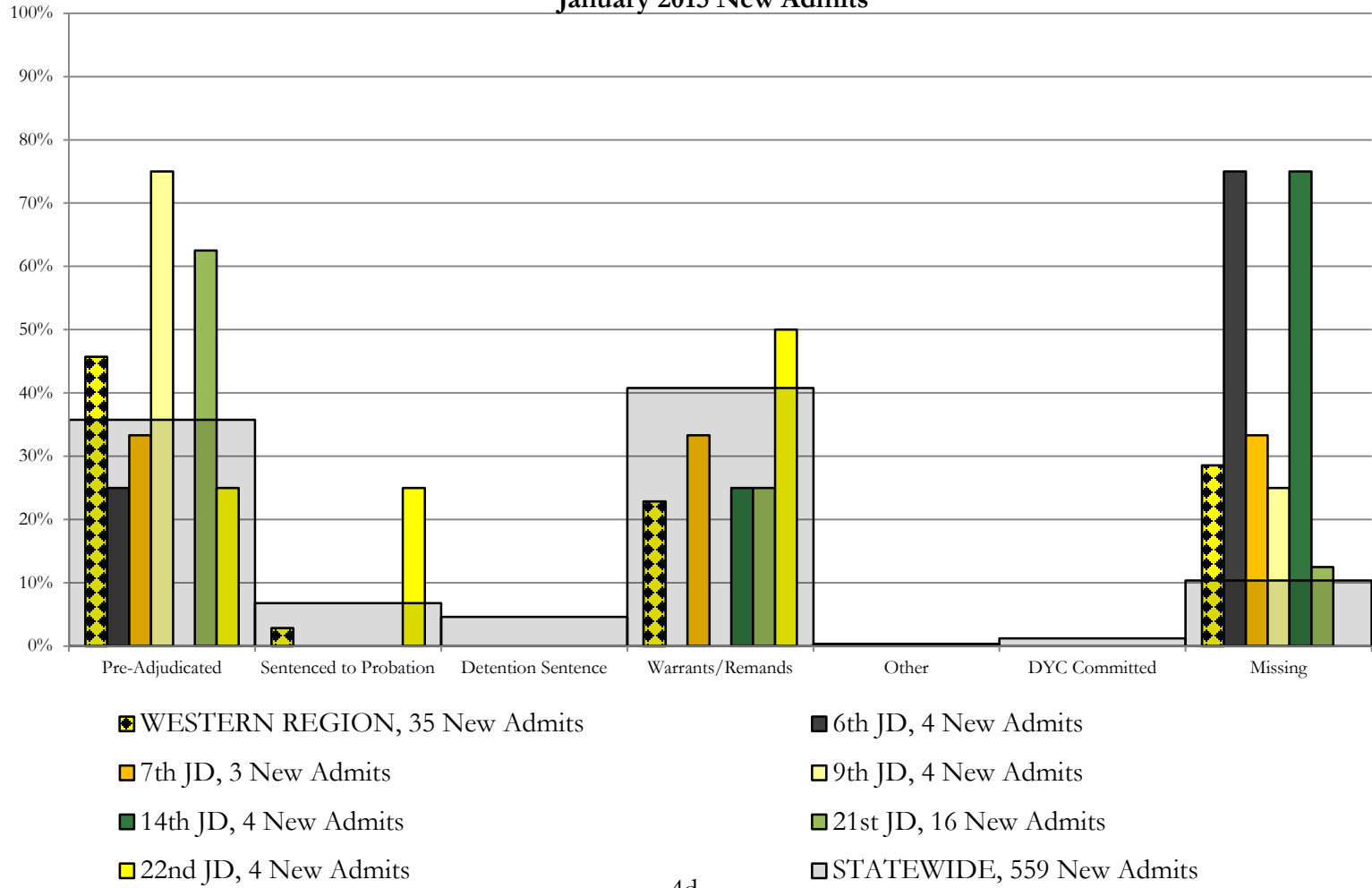


- SOUTHERN REGION, 102 New Admits
- 4th JD, 58 New Admits
- 11th JD, 5 New Admits
- 15th JD, 2 New Admits
- STATEWIDE, 559 New Admits
- 3rd JD, 1 New Admits
- 10th JD, 27 New Admits
- 12th JD, 7 New Admits
- 16th JD, 2 New Admits

Western Region

SB94 Reason Detained by Judicial District

January 2015 New Admits



January 2015 SB94 Supplemental Report

DYC Detention Maximum Youth Served by Judicial District¹

Region	JD	Detention Capacity	Detention ADP		Maximum Youth Served on a Single Day ^{2,3}			
			January 2015	YTD	January 2015		YTD	
					Number of Youth	% of Detention Capacity	Number of Youth	% of Detention Capacity
<i>Central Region</i>								
	1st	37	25.6	27.3	34	91.9%	36	97.3%
	2nd	64	47.2	52.4	58	90.6%	68	106.3%
	5th	4	1.9	2.9	3	75.0%	5	125.0%
	18th	61	47.5	49.3	54	88.5%	62	101.6%
Central Region		166	122.2	131.9	140	84.3%	154	92.8%
<i>Northeast Region</i>								
	8th	21	10.5	16.7	17	81.0%	29	138.1%
	13th	5	4.3	2.4	7	140.0%	7	140.0%
	17th	30	18.5	21.7	29	96.7%	30	100.0%
	19th	25	22.2	24.5	30	120.0%	34	136.0%
	20th	13	5.5	6.1	10	76.9%	13	100.0%
Northeast Region		94	60.9	71.4	74	78.7%	90	95.7%
<i>Southern Region</i>								
	3rd	2	0.6	0.8	1	50.0%	2	100.0%
	4th	51	30.2	36.3	36	70.6%	52	102.0%
	10th	13	10.5	11.6	15	115.4%	19	146.2%
	11th	8	1.9	3.0	3	37.5%	7	87.5%
	12th	4	2.1	1.4	4	100.0%	4	100.0%
	15th	2	0.3	1.1	2	100.0%	4	200.0%
	16th	3	1.5	1.4	3	100.0%	3	100.0%
Southern Region		83	47.0	55.8	55	66.3%	72	86.7%
<i>Western Region</i>								
	6th	5	2.5	2.8	6	120.0%	6	120.0%
	7th	7	4.8	4.1	6	85.7%	7	100.0%
	9th	6	2.9	2.4	5	83.3%	7	116.7%
	14th	3	0.5	0.7	3	100.0%	4	133.3%
	21st	14	7.5	11.6	11	78.6%	19	135.7%
	22nd	4	3.2	1.2	5	125.0%	5	125.0%
Western Region		39	21.4	22.8	25	64.1%	33	84.6%
<i>Missing JD or Multiple JDs</i>			0.8	1.1				
Statewide		382	252.3	283.1	272	71.2%	322	84.3%

¹ Maximum youth served is the highest number of youth in detention on a single day during the month or fiscal year.

² Regional figures are not the sum of judicial districts, but represent the maximum count on one day for the entire region.

³ State figures are not the sum of regional figures, but represent the maximum count on one day for the entire state.

January 2015

SB94 Supplemental Report

SB94 Community ADP by Judicial District

Region	JD	Pre-Adjudicated		Sentenced		Total Pre-Adjudicated and Sentenced	
		January 2015	YTD	January 2015	YTD	January 2015	YTD
<i>Central Region</i>							
	1st	141.4	112.1	12.6	13.7	154.0	125.8
	2nd	212.6	153.1	61.9	54.8	274.5	207.9
	5th	5.6	6.7	21.5	28.8	27.2	35.5
	18th	293.2	249.0	13.4	13.0	306.7	262.0
Central Total		652.9	520.8	109.4	110.3	762.3	631.1
<i>Northeast Region</i>							
	8th	43.6	43.1	10.9	21.4	54.5	64.5
	13th	43.8	40.4	30.9	25.7	74.7	66.1
	17th	82.2	69.0	31.3	43.5	113.5	112.6
	19th	48.4	43.8	31.3	32.6	79.7	76.5
	20th	35.1	36.8	26.1	28.7	61.2	65.6
Northeast Total		253.1	233.2	130.6	151.9	383.7	385.1
<i>Southern Region</i>							
	3rd	2.9	2.9	6.0	6.4	8.9	9.3
	4th	92.6	78.3	46.7	42.3	139.3	120.5
	10th	26.0	22.8	34.0	21.9	60.0	44.7
	11th	21.2	12.8	37.0	32.3	58.2	45.1
	12th	4.3	4.9	10.1	6.9	14.4	11.8
	15th	7.4	5.9	7.4	6.7	14.8	12.5
	16th	0.6	1.6	12.1	11.3	12.8	12.9
Southern Total		155.0	129.1	153.2	127.7	308.3	256.9
<i>Western Region</i>							
	6th	13.4	9.0	0.0	1.0	13.4	10.1
	7th	10.6	12.8	18.9	16.1	29.6	28.9
	9th	13.5	6.9	3.6	1.5	17.1	8.4
	14th	4.0	3.3	4.8	3.1	8.8	6.4
	21st	40.4	47.3	4.0	6.6	44.4	53.9
	22nd	7.4	7.1	3.1	1.0	10.6	8.1
Western Total		89.4	86.5	34.5	29.3	123.9	115.7
Statewide Total		1150.4	969.6	427.7	419.3	1578.2	1388.9