

December 2014 FY 2013-2014 SB94 JDSAG SUPPLEMENTAL REPORT

Prepared by the Division of Youth Corrections (DYC)
Research and Evaluation Unit
January 29, 2015



COLORADO

**Office of Children,
Youth & Families**

Division of Youth Corrections

December 2014 SB94 Supplemental Report

DYC Commitment ADP & New Commitments by Judicial District

Region	JD ¹	2015 Population Estimates ²	ADP ³		New Commitments		
			December 2014	YTD	December 2014	YTD	YTD Rate ⁴
<i>Central Region</i>							
	1st	54,562	68.9	72.3	5	18	3.3
	2nd	58,395	146.9	152.1	8	32	5.5
	5th	10,073	8.0	7.4	1	3	3.0
	18th	115,459	92.2	95.0	1	25	2.2
Central Total		238,489	316.1	326.7	15	78	3.3
<i>Northeast Region</i>							
	8th	31,146	36.3	36.1	1	12	3.9
	13th	8,509	16.3	16.1	1	4	4.7
	17th	66,724	79.2	81.5	6	29	4.3
	19th	34,214	55.1	56.3	4	25	7.3
	20th	31,597	8.5	9.7	2	3	0.9
Northeast Total		172,190	195.4	199.6	14	73	4.2
<i>Southern Region</i>							
	3rd	1,993	3.0	2.3	0	1	5.0
	4th	79,018	107.3	107.2	5	22	2.8
	10th	18,161	23.3	25.7	1	6	3.3
	11th	7,322	11.0	11.4	0	4	5.5
	12th	5,216	5.5	7.8	0	0	0.0
	15th	2,182	2.0	2.3	0	0	0.0
	16th	2,902	4.0	3.9	0	1	3.4
Southern Total		116,794	156.1	160.6	6	34	2.9
<i>Western Region</i>							
	6th	6,346	15.3	13.9	1	5	7.9
	7th	10,564	9.0	9.5	1	2	1.9
	9th	9,448	9.6	10.7	0	0	0.0
	14th	5,479	1.7	1.1	1	1	1.8
	21st	15,437	26.6	26.9	2	8	5.2
	22nd	3,013	6.6	8.1	0	0	0.0
Western Total		50,287	68.8	70.1	5	16	3.2
Statewide Total		577,760	736.4	757.0	40	201	3.5

¹ JD represents the judicial district in which the client was committed. Regional totals are a sum of their respective judicial districts. Regional totals reported here may differ slightly from those reported in the Monthly Population Report, where region is defined by active caseloads.

² Source: DOLA 2015 Estimates

³ Due to rounding, totals shown may not be an exact sum of the subtotals.

⁴ Per 10,000 youth in the population

December 2014 SB94 Supplemental Report

DYC Detention ADP and New Detention Admissions by Judicial District

Region	JD	2015 Population Estimates ¹	ADP		New Admits		
			December 2014	YTD	December 2014	YTD	YTD New Admit Rate ²
<i>Central Region</i>							
	1st	54,562	26.9	27.6	54	347	63.6
	2nd	58,395	50.9	53.3	84	547	93.7
	5th	10,073	2.0	3.1	5	17	16.9
	18th	115,459	46.4	49.6	106	628	54.4
Central Total		238,489	126.2	133.5	249	1,539	64.5
<i>Northeast Region</i>							
	8th	31,146	17.5	17.7	43	245	78.7
	13th	8,509	4.3	2.1	11	45	52.9
	17th	66,724	20.9	22.3	39	241	36.1
	19th	34,214	23.2	24.9	43	295	86.2
	20th	31,597	7.1	6.2	31	167	52.9
Northeast Total		172,190	73.0	73.2	167	993	57.7
<i>Southern Region</i>							
	3rd	1,993	1.3	0.9	0	9	45.2
	4th	79,018	34.2	37.4	63	396	50.1
	10th	18,161	12.5	11.9	38	192	105.7
	11th	7,322	1.7	3.2	6	73	99.7
	12th	5,216	0.7	1.3	2	23	44.1
	15th	2,182	0.1	1.3	1	16	73.3
	16th	2,902	1.1	1.4	1	9	31.0
Southern Total		116,794	51.5	57.4	111	718	61.5
<i>Western Region</i>							
	6th	6,346	3.0	2.8	3	29	45.7
	7th	10,564	4.3	4.0	3	30	28.4
	9th	9,448	3.5	2.4	5	24	25.4
	14th	5,479	1.3	0.7	5	11	20.1
	21st	15,437	9.3	12.3	10	104	67.4
	22nd	3,013	1.4	0.8	3	13	43.1
Western Total		50,287	22.7	23.1	29	211	42.0
<i>Missing JD or Multiple JDs</i>			<i>1.1</i>	<i>1.1</i>			
Statewide Total		577,760	274.6	288.2	556	3,461	59.9

¹ Source: DOLA 2015 Estimates

² Per 10,000 youth in the population

December 2014 SB94 Supplemental Report

DYC Detention LOS by Judicial District				
Region	JD	YTD Detention Releases	YTD LOS (days)	LOS (days) Compared to State AVG
<i>Central Region</i>				
	1st	346	14.3	-0.7
	2nd	551	17.9	2.9
	5th	16	25.5	10.5
	18th	625	12.7	-2.3
Central Total		1,538	15.1	0.0
<i>Northeast Region</i>				
	8th	244	12.5	-2.5
	13th	41	7.3	-7.8
	17th	252	17.5	2.5
	19th	306	14.3	-0.7
	20th	161	6.0	-9.0
Northeast Total		1,004	13.0	-2.0
<i>Southern Region</i>				
	3rd	9	13.2	-1.8
	4th	401	15.4	0.4
	10th	197	13.6	-1.4
	11th	72	7.6	-7.4
	12th	21	10.7	-4.3
	15th	18	14.4	-0.6
	16th	10	24.1	9.1
Southern Total		728	14.1	-0.9
<i>Western Region</i>				
	6th	28	13.5	-1.5
	7th	26	19.1	4.1
	9th	20	19.1	4.1
	14th	11	11.5	-3.5
	21st	104	17.8	2.8
	22nd	12	10.9	-4.1
Western Total		201	16.7	1.7
Statewide Total		3,471	15.0	-

December 2014 SB 94 Supplemental Report

YTD DYC Detention ADP & Ethnicity by Judicial District

Region	JD	Anglo-American		African-American		Hispanic / Latino		Native-American		Asian-American		Other		TOTAL	
		ADP	%	ADP	%	ADP	%	ADP	%	ADP	%	ADP	%	ADP	%
Central															
	1st	15.5	56.1%	1.9	6.8%	8.4	30.6%	0.1	0.4%	1.3	4.7%	0.0	0.0%	27.2	99%
	2nd	4.2	7.9%	22.0	41.4%	25.7	48.2%	0.2	0.3%	0.5	0.9%	0.7	1.3%	53.3	100%
	5th	2.0	64.1%	0.0	0.0%	1.1	35.9%	0.0	0.0%	0.0	0.0%	0.0	0.0%	3.1	100%
	18th	16.9	34.1%	21.2	42.8%	10.4	21.0%	0.4	0.8%	0.3	0.6%	0.3	0.7%	49.6	100%
Central Total		38.6	40.5%	45.2	22.7%	45.7	33.9%	0.7	0.4%	2.0	1.5%	1.0	0.5%	133.2	100%
Northeast															
	8th	11.3	63.6%	1.1	6.4%	4.5	25.5%	0.05	0.3%	0.0	0.0%	0.3	1.6%	17.2	97%
	13th	1.2	58.3%	0.0	0.0%	0.9	41.1%	0.0	0.0%	0.0	0.0%	0.01	0.5%	2.1	100%
	17th	6.9	31.1%	4.0	18.1%	10.7	48.0%	0.6	2.7%	0.05	0.2%	0.0	0.0%	22.3	100%
	19th	6.6	26.7%	0.2	0.8%	17.6	70.6%	0.0	0.0%	0.2	0.7%	0.3	1.2%	24.9	100%
	20th	3.0	48.9%	0.6	10.2%	2.3	37.4%	0.0	0.0%	0.0	0.0%	0.2	3.6%	6.2	100%
Northeast Total		29.1	45.7%	6.0	7.1%	36.0	44.5%	0.7	0.6%	0.2	0.2%	0.8	1.4%	72.7	99%
Southern															
	3rd	0.1	17.2%	0.0	0.0%	0.7	83%	0.0	0.0%	0.0	0.0%	0.0	0.0%	0.9	100%
	4th	14.0	37.4%	11.7	31.4%	11.0	29.4%	0.4	1.1%	0.0	0.0%	0.3	0.8%	37.4	100%
	10th	4.3	36.1%	0.4	3.4%	6.6	55.7%	0.0	0.0%	0.0	0.0%	0.6	4.8%	11.9	100%
	11th	2.6	80.4%	0.4	11.2%	0.2	7.7%	0.02	0.6%	0.0	0.0%	0.0	0.0%	3.2	100%
	12th	0.5	37.8%	0.01	0.6%	0.7	51.5%	0.0	0.0%	0.0	0.0%	0.1	10.1%	1.3	100%
	15th	1.0	77.0%	0.0	0.0%	0.3	20.2%	0.04	2.8%	0.0	0.0%	0.0	0.0%	1.3	100%
	16th	0.1	9.3%	0.0	0.0%	1.3	90.7%	0.0	0.0%	0.0	0.0%	0.0	0.0%	1.4	100%
Southern Total		22.6	42.2%	12.5	6.7%	20.8	48.3%	0.5	0.6%	0.0	0.0%	1.0	2.2%	57.4	100%
Western															
	6th	2.0	72.9%	0.0	0.0%	0.1	2.2%	0.5	18.0%	0.0	0.0%	0.2	6.9%	2.8	100%
	7th	3.1	78.8%	0.0	0.0%	0.8	21.2%	0.0	0.0%	0.0	0.0%	0.0	0.0%	4.0	100%
	9th	1.5	62.7%	0.2	8.6%	0.7	28.8%	0.0	0.0%	0.0	0.0%	0.0	0.0%	2.4	100%
	14th	0.7	94%	0.0	0.0%	0.04	5.9%	0.0	0.0%	0.0	0.0%	0.0	0.0%	0.7	100%
	21st	10.3	83.7%	0.02	0.2%	2.0	16.0%	0.02	0.2%	0.0	0.0%	0.0	0.0%	12.3	100%
	22nd	0.5	58.0%	0.1	9.7%	0.0	0.0%	0.3	32.3%	0.0	0.0%	0.0	0.0%	0.8	100%
Western Total		18.2	75.0%	0.3	3.1%	3.6	12.3%	0.8	8.4%	0.0	0.0%	0.2	1.2%	23.1	100%
Missing JD Data		0.3		0.3		0.5		0.0		0.0		0.0		1.1	
Statewide Total		108.8	37.7%	64.2	22.3%	106.5	37.0%	2.6	0.9%	2.3	0.8%	3.0	1.0%	287.4	100%

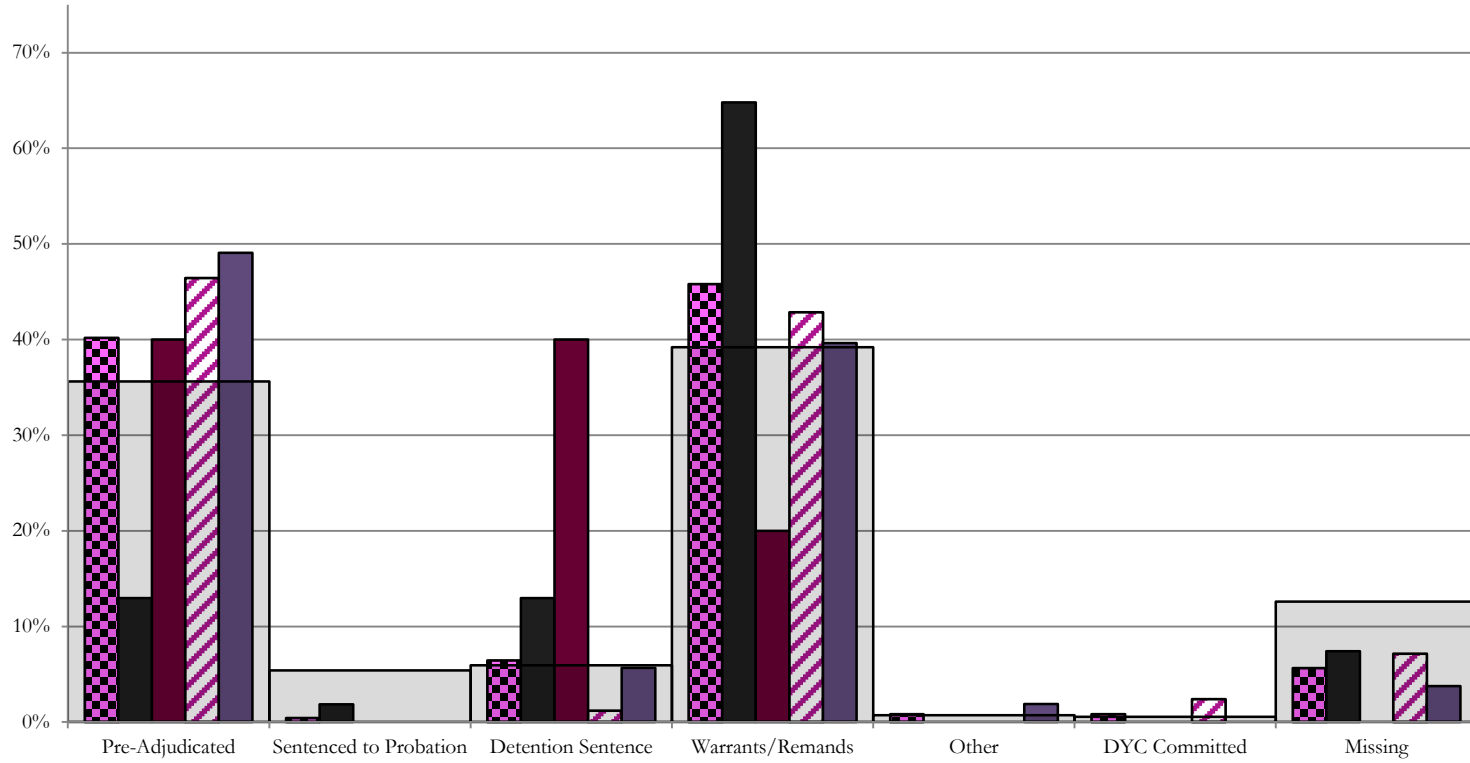
December 2014 SB94 JDSAG Supplemental Report

SB94 Reason Detained (RD) by Judicial District

Region	JD	Monthly New Admits	Pre-Adjudicated		Probation Hold		Detention Sentence		Warrants/Remands		Other		DYC Committed		Missing													
			Felony	Misdemeanor	Technical Violator	New Charges	Detention Sentence (up to 45 days)	Valid Court Order (VCO) Truancy	Failure to Appear (FTA)	Failure to Comply (FTC)	Interstate Compact on Juveniles (ICJ) Hold	Immigration Hold	Institutional	Parole	Missing													
																#	%	#	%	#	%	#	%	#	%	#	%	#
Central Region																												
	1st	54	5	9.3%	2	3.7%	1	1.9%	0	0.0%	7	13.0%	0	0.0%	13	24.1%	22	40.7%	0	0.0%	0	0.0%	0	0.0%	0	0.0%	4	7.4%
	2nd	84	26	31.0%	13	15.5%	0	0.0%	0	0.0%	1	1.2%	0	0.0%	4	4.8%	32	38.1%	0	0.0%	0	0.0%	1	1.2%	1	1.2%	6	7.1%
	5th	5	0	0.0%	2	40.0%	0	0.0%	0	0.0%	2	40.0%	0	0.0%	0	0.0%	1	20.0%	0	0.0%	0	0.0%	0	0.0%	0	0.0%	0	0.0%
	18th	106	22	20.8%	30	28.3%	0	0.0%	0	0.0%	6	5.7%	0	0.0%	6	5.7%	36	34.0%	2	1.9%	0	0.0%	0	0.0%	0	0.0%	4	3.8%
	Central Total	249	53	21.3%	47	18.9%	1	0.4%	0	0.0%	16	6.4%	0	0.0%	23	9.2%	91	36.5%	2	0.8%	0	0.0%	1	0.4%	1	0.4%	14	5.6%
Northeast Region																												
	8th	43	3	7.0%	3	7.0%	3	7.0%	0	0.0%	0	0.0%	0	0.0%	4	9.3%	21	48.8%	0	0.0%	0	0.0%	0	0.0%	0	0.0%	9	20.9%
	13th	11	2	18.2%	2	18.2%	0	0.0%	0	0.0%	0	0.0%	0	0.0%	0	0.0%	1	9.1%	2	18.2%	0	0.0%	0	0.0%	0	0.0%	4	36.4%
	17th	39	9	23.1%	4	10.3%	1	2.6%	0	0.0%	0	0.0%	0	0.0%	4	10.3%	15	38.5%	0	0.0%	0	0.0%	0	0.0%	0	0.0%	7	17.9%
	19th	43	15	34.9%	3	7.0%	12	27.9%	0	0.0%	4	9.3%	5	11.6%	2	4.7%	1	2.3%	0	0.0%	0	0.0%	0	0.0%	0	0.0%	1	2.3%
	20th	31	4	12.9%	4	12.9%	0	0.0%	0	0.0%	1	3.2%	0	0.0%	0	0.0%	1	3.2%	0	0.0%	0	0.0%	0	0.0%	0	0.0%	21	67.7%
	Northeast Total	167	33	19.8%	16	9.6%	16	9.6%	0	0.0%	5	3.0%	5	3.0%	10	6.0%	39	23.4%	2	1.2%	0	0.0%	0	0.0%	0	0.0%	41	24.6%
Southern Region																												
	3rd	0	0	0.0%	0	0.0%	0	0.0%	0	0.0%	0	0.0%	0	0.0%	0	0.0%	0	0.0%	0	0.0%	0	0.0%	0	0.0%	0	0.0%	0	0.0%
	4th	63	18	28.6%	12	19.0%	3	4.8%	5	7.9%	0	0.0%	3	4.8%	5	7.9%	16	25.4%	0	0.0%	0	0.0%	1	1.6%	0	0.0%	0	0.0%
	10th	38	7	18.4%	0	0.0%	0	0.0%	0	0.0%	1	2.6%	1	2.6%	10	26.3%	14	36.8%	0	0.0%	0	0.0%	1	2.6%	0	0.0%	4	10.5%
	11th	6	0	0.0%	1	16.7%	0	0.0%	0	0.0%	0	0.0%	1	16.7%	1	16.7%	2	33.3%	0	0.0%	0	0.0%	0	0.0%	0	0.0%	1	16.7%
	12th	2	0	0.0%	1	50.0%	0	0.0%	0	0.0%	0	0.0%	0	0.0%	0	0.0%	1	50.0%	0	0.0%	0	0.0%	0	0.0%	0	0.0%	0	0.0%
	15th	1	0	0.0%	0	0.0%	0	0.0%	0	0.0%	0	0.0%	0	0.0%	1	100.0%	0	0.0%	0	0.0%	0	0.0%	0	0.0%	0	0.0%	0	0.0%
	16th	1	0	0.0%	0	0.0%	0	0.0%	0	0.0%	0	0.0%	0	0.0%	1	100.0%	0	0.0%	0	0.0%	0	0.0%	0	0.0%	0	0.0%	0	0.0%
	Southern Total	111	25	22.5%	14	12.6%	3	2.7%	5	4.5%	1	0.9%	5	4.5%	17	15.3%	34	30.6%	0	0.0%	0	0.0%	2	1.8%	0	0.0%	5	4.5%
Western Region																												
	6th	3	0	0.0%	0	0.0%	0	0.0%	0	0.0%	0	0.0%	0	0.0%	0	0.0%	0	0.0%	0	0.0%	0	0.0%	0	0.0%	0	0.0%	3	100.0%
	7th	3	2	66.7%	0	0.0%	0	0.0%	0	0.0%	0	0.0%	0	0.0%	1	33.3%	0	0.0%	0	0.0%	0	0.0%	0	0.0%	0	0.0%	0	0.0%
	9th	5	0	0.0%	0	0.0%	4	80.0%	0	0.0%	0	0.0%	0	0.0%	0	0.0%	0	0.0%	0	0.0%	0	0.0%	0	0.0%	0	0.0%	1	20.0%
	14th	5	1	20.0%	0	0.0%	0	0.0%	0	0.0%	0	0.0%	0	0.0%	0	0.0%	0	0.0%	0	0.0%	0	0.0%	0	0.0%	0	0.0%	4	80.0%
	21st	10	3	30.0%	2	20.0%	0	0.0%	0	0.0%	1	10.0%	0	0.0%	0	0.0%	3	30.0%	0	0.0%	0	0.0%	0	0.0%	0	0.0%	1	10.0%
	22nd	3	2	66.7%	0	0.0%	1	33.3%	0	0.0%	0	0.0%	0	0.0%	0	0.0%	0	0.0%	0	0.0%	0	0.0%	0	0.0%	0	0.0%	0	0.0%
	Western Total	29	8	27.6%	2	6.9%	5	17.2%	0	0.0%	1	3.4%	0	0.0%	0	0.0%	4	13.8%	0	0.0%	0	0.0%	0	0.0%	0	0.0%	9	31.0%
	Missing JD or Multiple JD	0	0	0	0	0	0	0	0	0	0	0	0	0	0	0	0	0	0	0	0	0	0	0	0	0	0	0
	Individual RD Totals	556	119	21.4%	79	14.2%	25	4.5%	5	0.9%	23	4.1%	10	1.8%	50	9.0%	168	30.2%	4	0.7%	0	0.0%	3	0.5%	0	0.0%	70	12.6%
	Statewide Totals	556	198	35.6%	30	5.4%	33	5.9%	218	39.2%	4	0.7%	0	0.0%	3	0.5%	70	12.6%										

Central Region

SB94 Reason Detained by Judicial District December 2014 New Admits



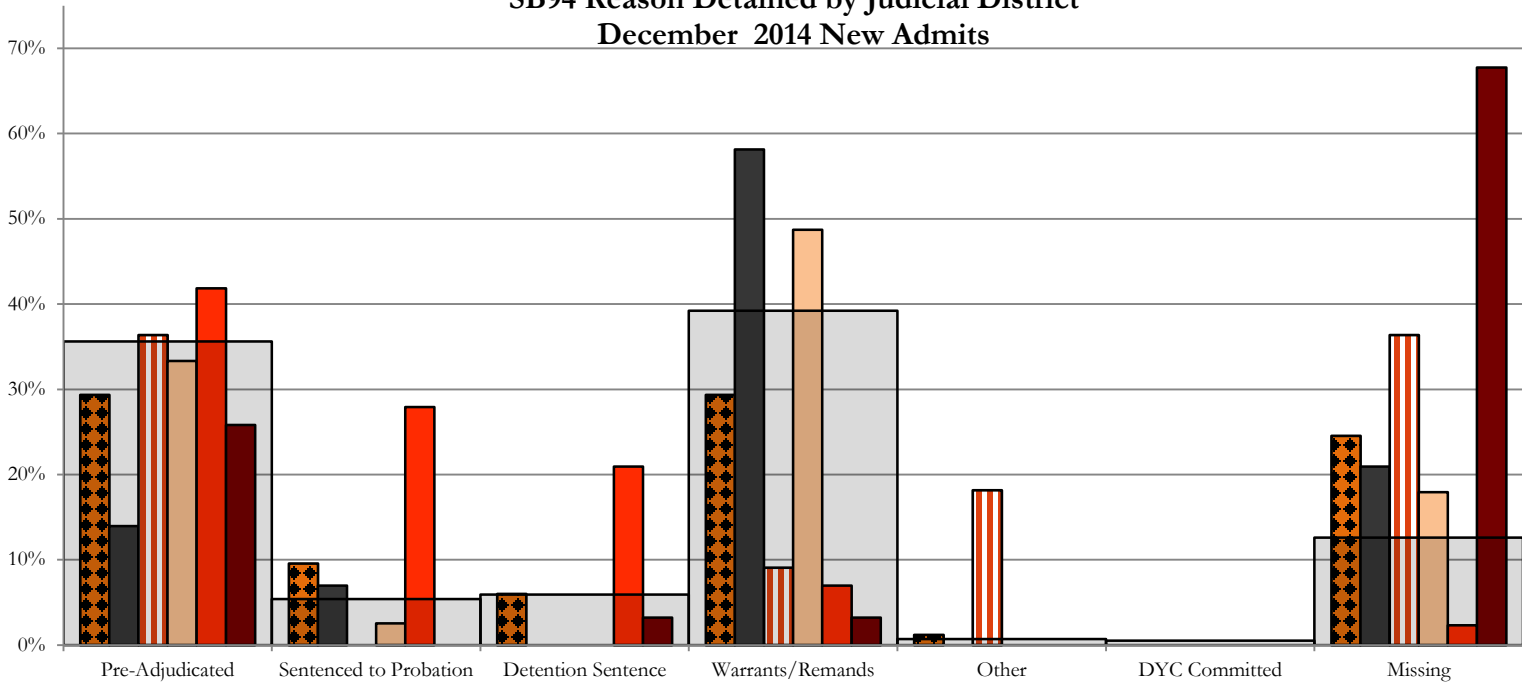
■ CENTRAL REGION, 249 New Admits
 ■ 5th JD, 5 New Admits
 ■ 18th JD, 106 New Admits

■ 1st JD, 54 New Admits
 ■ 2nd JD, 84 New Admits
 ■ STATEWIDE, 556 New Admits

Northeast Region

SB94 Reason Detained by Judicial District

December 2014 New Admits

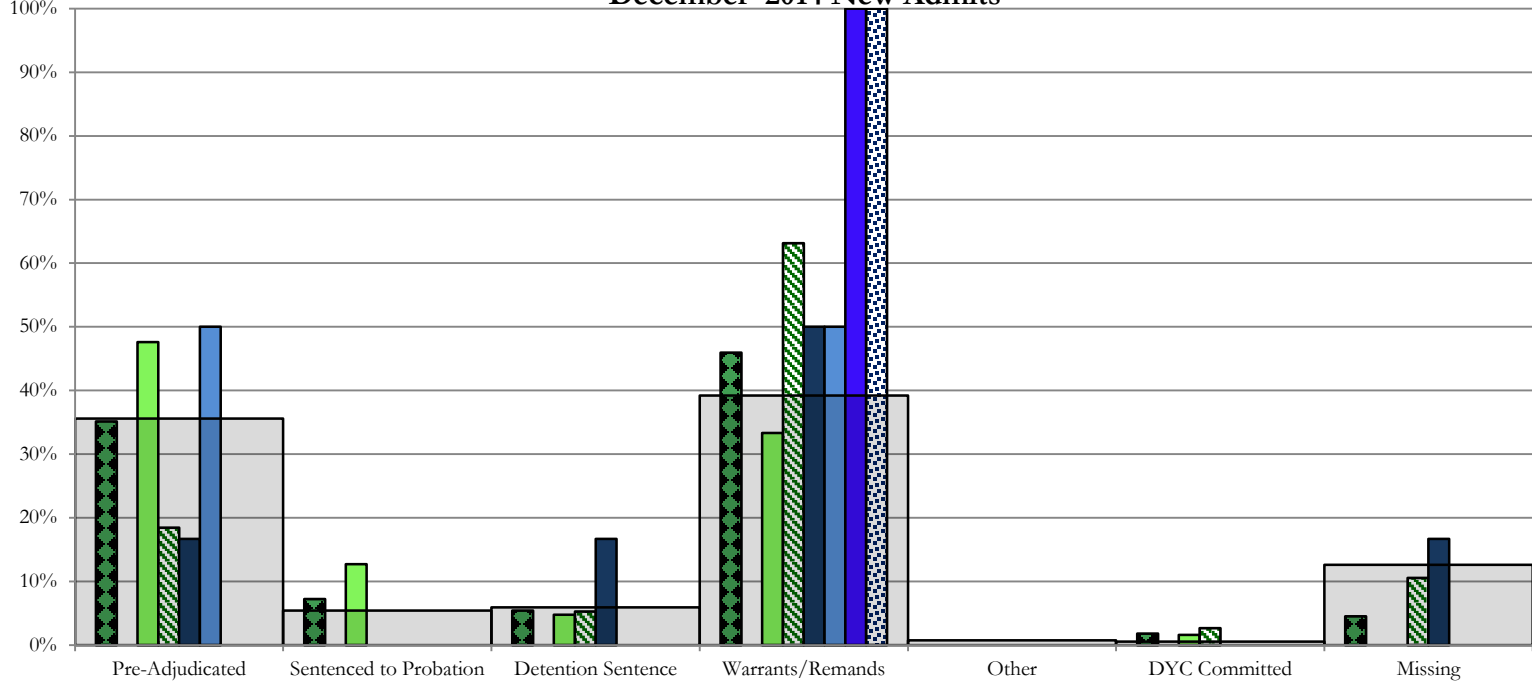


- NORTHEAST REGION, 167 New Admits
- 8th JD, 43 New Admits
- 13th JD, 11 New Admits
- 19th JD, 43 New Admits
- 17th JD, 39 New Admits
- 20th JD, 31 New Admits
- STATEWIDE, 556 New Admits

Southern Region

SB94 Reason Detained by Judicial District

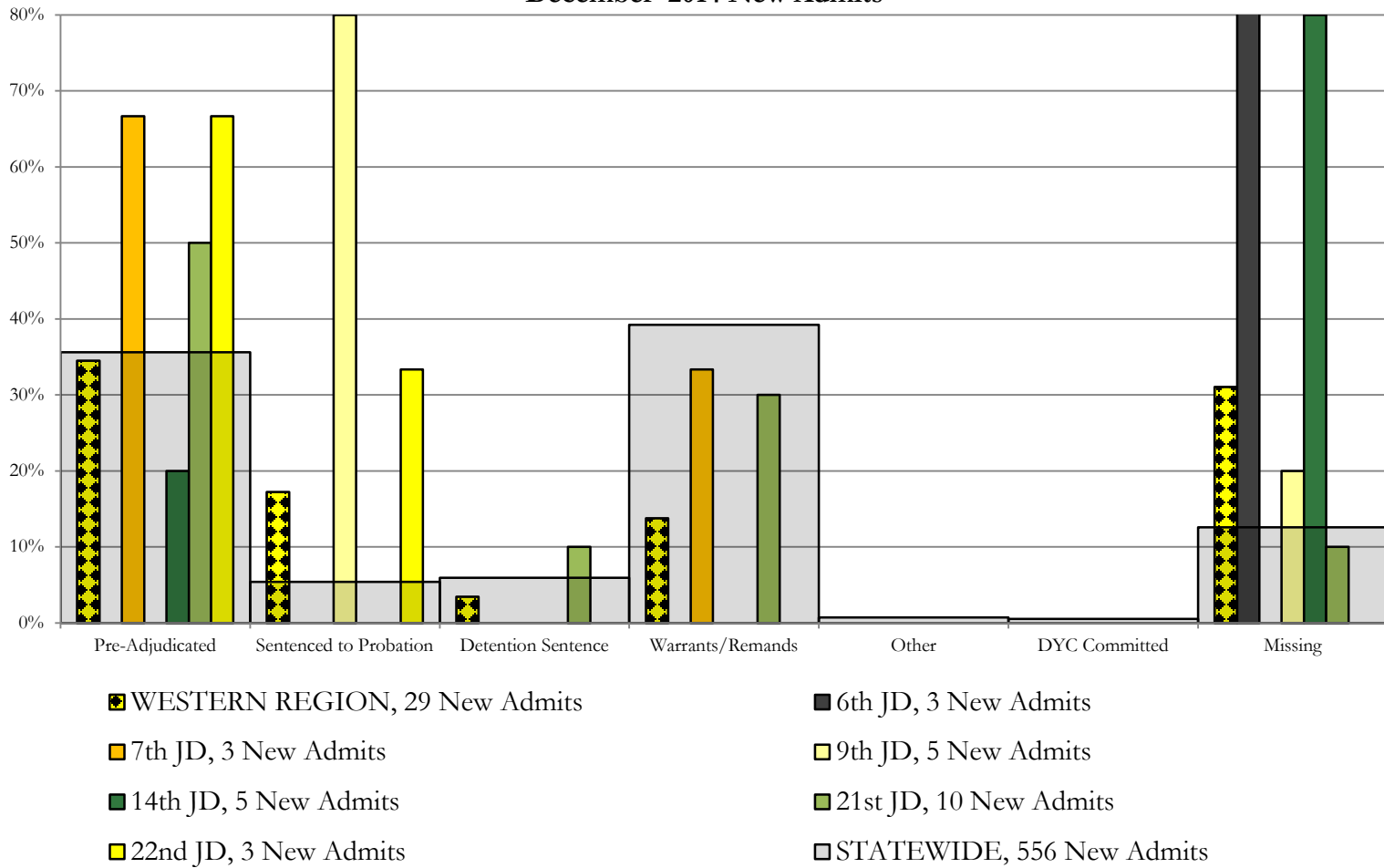
December 2014 New Admits



- SOUTHERN REGION, 111 New Admits
- 3rd JD, 0 New Admits
- 4th JD, 63 New Admits
- 10th JD, 38 New Admits
- 11th JD, 6 New Admits
- 12th JD, 2 New Admits
- 15th JD, 1 New Admits
- 16th JD, 1 New Admits
- STATEWIDE, 556 New Admits

Western Region

SB94 Reason Detained by Judicial District December 2014 New Admits



December 2014 SB94 Supplemental Report

DYC Detention Maximum Youth Served by Judicial District¹

Region	JD	Detention Capacity	Detention ADP		Maximum Youth Served on a Single Day ^{2,3}			
			December 2014	YTD	December 2014		YTD	
					Number of Youth	% of Detention Capacity	Number of Youth	% of Detention Capacity
<i>Central Region</i>								
	1st	37	26.9	27.6	35	94.6%	36	97.3%
	2nd	64	50.9	53.3	58	90.6%	68	106.3%
	5th	4	2.0	3.1	4	100.0%	5	125.0%
	18th	61	46.4	49.6	52	85.2%	62	101.6%
Central Region		166	126.2	133.5	139	83.7%	154	92.8%
<i>Northeast Region</i>								
	8th	21	17.5	17.7	25	119.0%	28	133.3%
	13th	5	4.3	2.1	7	140.0%	7	140.0%
	17th	30	20.9	22.3	30	100.0%	30	100.0%
	19th	25	23.2	24.9	30	120.0%	34	136.0%
	20th	13	7.1	6.2	13	100.0%	13	100.0%
Northeast Region		94	73.0	73.2	89	94.7%	89	94.7%
<i>Southern Region</i>								
	3rd	2	1.3	0.9	2	100.0%	2	100.0%
	4th	51	34.2	37.4	45	88.2%	52	102.0%
	10th	13	12.5	11.9	20	153.8%	20	153.8%
	11th	8	1.7	3.2	3	37.5%	7	87.5%
	12th	4	0.7	1.3	2	50.0%	4	100.0%
	15th	2	0.1	1.3	1	50.0%	4	200.0%
	16th	3	1.1	1.4	2	66.7%	3	100.0%
Southern Region		83	51.5	57.4	64	77.1%	72	86.7%
<i>Western Region</i>								
	6th	5	3.0	2.8	4	80.0%	5	100.0%
	7th	7	4.3	4.0	6	85.7%	7	100.0%
	9th	6	3.5	2.4	7	116.7%	7	116.7%
	14th	3	1.3	0.7	4	133.3%	4	133.3%
	21st	14	9.3	12.3	15	107.1%	19	135.7%
	22nd	4	1.4	0.8	2	50.0%	3	75.0%
Western Region		39	22.7	23.1	33	84.6%	33	84.6%
<i>Missing JD or Multiple JDs</i>			1.1	1.1				
Statewide		382	274.6	288.2	307	80.4%	321	84.0%

¹ Maximum youth served is the highest number of youth in detention on a single day during the month or fiscal year.

² Regional figures are not the sum of judicial districts, but represent the maximum count on one day for the entire region.

³ State figures are not the sum of regional figures, but represent the maximum count on one day for the entire state.

December 2014

SB94 Supplemental Report

SB94 Community ADP by Judicial District

Region	JD	Pre-Adjudicated		Sentenced		Total Pre-Adjudicated and Sentenced	
		December 2014	YTD	December 2014	YTD	December 2014	YTD
<i>Central Region</i>							
	1st	135.5	112.5	13.6	14.5	149.0	127.0
	2nd	200.0	146.5	63.6	54.8	263.6	201.2
	5th	5.6	6.8	22.9	28.7	28.5	35.5
	18th	351.7	307.7	26.7	26.0	378.4	333.7
Central Total		692.8	573.5	126.7	124.0	819.5	697.5
<i>Northeast Region</i>							
	8th	41.9	39.3	14.1	18.9	56.1	58.1
	13th	48.8	41.7	30.2	24.8	79.0	66.5
	17th	110.3	86.6	82.8	79.7	193.1	166.3
	19th	44.8	43.1	32.0	33.0	76.8	76.1
	20th	39.4	38.1	28.4	29.4	67.8	67.6
Northeast Total		285.2	248.8	187.6	185.8	472.8	434.6
<i>Southern Region</i>							
	3rd	3.0	2.3	2.5	2.9	5.5	5.3
	4th	113.9	87.9	48.1	43.0	162.1	130.8
	10th	22.2	23.2	36.2	26.0	58.4	49.2
	11th	19.0	12.0	43.9	34.0	62.9	46.0
	12th	3.0	5.0	9.4	6.4	12.5	11.3
	15th	8.0	5.6	9.2	6.1	17.2	11.7
	16th	0.0	1.7	12.0	11.1	12.0	12.9
Southern Total		169.2	137.7	161.3	129.5	330.5	267.1
<i>Western Region</i>							
	6th	12.0	9.3	0.0	1.2	12.0	10.5
	7th	14.1	13.2	17.7	15.6	31.8	28.8
	9th	13.9	6.1	2.8	1.2	16.7	7.2
	14th	4.0	2.2	3.1	2.4	7.1	4.6
	21st	45.0	48.4	5.5	7.0	50.5	55.4
	22nd	6.9	7.0	1.8	0.6	8.7	7.7
Western Total		96.0	86.2	30.8	27.9	126.7	114.1
Statewide Total		1243.2	1046.1	506.4	467.1	1749.6	1513.3