

September 2014 FY 2014-2015 SB94 JDSAG SUPPLEMENTAL REPORT

Prepared by the Division of Youth Corrections (DYC)
Research and Evaluation Unit
October 28, 2014



COLORADO

**Office of Children,
Youth & Families**

Division of Youth Corrections

September 2014 SB94 Supplemental Report

DYC Commitment ADP & New Commitments by Judicial District

Region	JD ¹	2015 Population Estimates ²	ADP ³		New Commitments		
			September 2014	YTD	September 2014	YTD	YTD Rate ⁴
<i>Central Region</i>							
	1st	54,562	72.5	73.4	2	9	1.6
	2nd	58,395	148.8	154.9	6	17	2.9
	5th	10,073	7.0	6.7	1	2	2.0
	18th	115,459	95.8	97.5	1	13	1.1
Central Total		238,489	324.1	332.5	10	41	1.7
<i>Northeast Region</i>							
	8th	31,146	36.1	37.9	2	4	1.3
	13th	8,509	15.2	15.8	0	1	1.2
	17th	66,724	81.5	82.7	5	16	2.4
	19th	34,214	59.2	54.6	3	14	4.1
	20th	31,597	10.9	11.0	0	1	0.3
Northeast Total		172,190	202.9	202.0	10	36	2.1
<i>Southern Region</i>							
	3rd	1,993	2.0	2.0	0	0	0.0
	4th	79,018	106.3	108.1	5	11	1.4
	10th	18,161	27.9	26.5	2	4	2.2
	11th	7,322	12.9	10.9	1	4	5.5
	12th	5,216	8.0	8.9	0	0	0.0
	15th	2,182	2.0	2.4	0	0	0.0
	16th	2,902	4.0	3.8	0	1	3.4
Southern Total		116,794	163.1	162.6	8	20	1.7
<i>Western Region</i>							
	6th	6,346	14.8	13.4	0	1	1.6
	7th	10,564	8.4	9.3	0	0	0.0
	9th	9,448	10.6	11.8	0	0	0.0
	14th	5,479	1.0	1.0	0	0	0.0
	21st	15,437	28.6	27.0	2	4	2.6
	22nd	3,013	8.1	8.5	0	0	0.0
Western Total		50,287	71.6	71.0	2	5	1.0
Statewide Total		577,760	761.6	768.1	30	102	1.8

¹ JD represents the judicial district in which the client was committed. Regional totals are a sum of their respective judicial districts. Regional totals reported here may differ slightly from those reported in the Monthly Population Report, where region is defined by active caseloads.

² Source: DOLA 2015 Estimates

³ Due to rounding, totals shown may not be an exact sum of the subtotals.

⁴ Per 10,000 youth in the population

September 2014 SB94 Supplemental Report

DYC Detention ADP and New Detention Admissions by Judicial District

Region	JD	2015 Population Estimates ¹	ADP		New Admits		
			September 2014	YTD	September 2014	YTD	YTD New Admit Rate ²
<i>Central Region</i>							
	1st	54,562	27.0	26.6	62	173	31.7
	2nd	58,395	56.4	51.2	100	282	48.3
	5th	10,073	4.3	4.2	5	10	9.9
	18th	115,459	48.4	50.0	115	313	27.1
Central Total		238,489	136.1	132.0	282	778	32.6
<i>Northeast Region</i>							
	8th	31,146	13.7	17.6	35	115	36.9
	13th	8,509	1.7	1.2	5	20	23.5
	17th	66,724	22.9	22.2	47	126	18.9
	19th	34,214	23.3	25.2	51	149	43.5
	20th	31,597	8.1	6.8	32	88	27.9
Northeast Total		172,190	69.7	73.0	170	498	28.9
<i>Southern Region</i>							
	3rd	1,993	0.0	0.5	0	3	15.1
	4th	79,018	42.5	34.8	70	184	23.3
	10th	18,161	12.5	12.8	37	97	53.4
	11th	7,322	3.7	3.9	15	37	50.5
	12th	5,216	1.3	0.9	6	12	23.0
	15th	2,182	1.4	2.2	3	11	50.4
	16th	2,902	1.8	1.7	2	4	13.8
Southern Total		116,794	63.2	56.8	133	348	29.8
<i>Western Region</i>							
	6th	6,346	2.7	2.5	2	12	18.9
	7th	10,564	3.4	3.3	5	19	18.0
	9th	9,448	2.1	1.7	2	6	6.4
	14th	5,479	0.0	0.7	0	2	3.7
	21st	15,437	14.2	12.3	24	57	36.9
	22nd	3,013	0.0	0.7	0	7	23.2
Western Total		50,287	22.5	21.2	33	103	20.5
<i>Missing JD or Multiple JDs</i>			<i>1.4</i>	<i>1.1</i>			
Statewide Total		577,760	292.9	284.0	618	1,727	29.9

¹ Source: DOLA 2015 Estimates

² Per 10,000 youth in the population

September 2014 SB94 Supplemental Report

DYC Detention LOS by Judicial District

Region	JD	YTD Detention Releases	YTD LOS* (days)	LOS (days) Compared to State AVG
<i>Central Region</i>				
	1st	165	12.2	-3.1
	2nd	275	16.8	1.5
	5th	7	40.2	24.9
	18th	316	13.9	-1.4
Central Total		763	14.8	-0.5
<i>Northeast Region</i>				
	8th	108	14.3	-1.0
	13th	18	7.1	-8.2
	17th	127	18.2	2.9
	19th	148	15.7	0.4
	20th	79	6.4	-8.9
Northeast Total		480	14.2	-1.1
<i>Southern Region</i>				
	3rd	4	12.3	-3.0
	4th	171	15.3	0.0
	10th	102	18.5	3.2
	11th	37	9.9	-5.4
	12th	11	5.9	-9.4
	15th	12	13.9	-1.5
	16th	4	19.2	3.9
Southern Total		341	15.3	0.0
<i>Western Region</i>				
	6th	12	15.6	0.3
	7th	14	7.9	-7.4
	9th	4	29.8	14.5
	14th	3	24.1	8.8
	21st	49	15.8	0.5
	22nd	8	10.5	-4.8
Western Total		90	14.9	-0.4
Statewide Total		1,674	15.3	-

**Length of Stay figures should be cautiously interpreted during the first few months of a new fiscal year due to the small number of total discharges/releases. LOS figures become more reliable as the number of discharged/released youth accumulates over the course of the FY.*

September 2014 SB94 JDSAG Supplemental Report

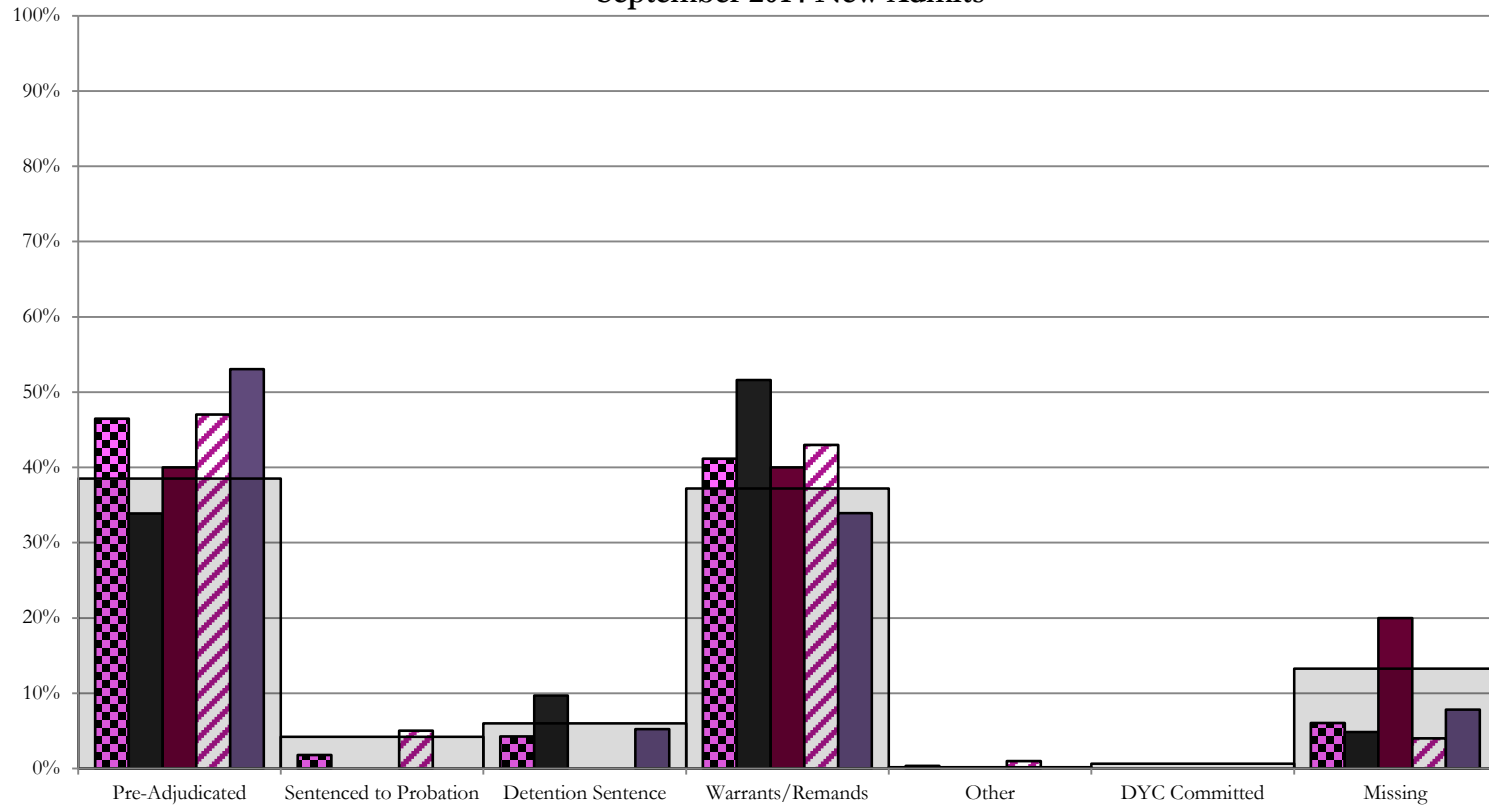
SB94 Reason Detained (RD) by Judicial District

Region	JD	Pre-Adjudicated				Sentenced to Probation				Detention Sentence								Warrants/Remands				Other								DYC Committed				Missing				
		Felony		Misdemeanor		Technical Violator		New Charges		Probation Sentence		Detention Sentence		Valid Court Order (VCO) Truancy		Awaiting DSS (Social Services) Placement		Failure to Appear (FTA)		Failure to Comply (FTC)		Interstate Compact on Juveniles (ICJ) Hold		Immigration Hold		No Bond Hold		Out-of-Country Warrant		Institutional		Parole		Missing				
		#	%	#	%	#	%	#	%	#	%	#	%	#	%	#	%	#	%	#	%	#	%	#	%	#	%	#	%	#	%	#	%	#	%			
Central Region																																						
	1st	62	12	19.4%	9	14.5%	0	0.0%	0	0.0%	0	0.0%	4	6.5%	2	3.2%	0	0.0%	15	24.2%	17	27.4%	0	0.0%	0	0.0%	0	0.0%	0	0.0%	0	0.0%	0	0.0%	0	0.0%	3	4.8%
	2nd	100	35	35.0%	12	12.0%	4	4.0%	1	1.0%	0	0.0%	0	0.0%	0	0.0%	0	0.0%	9	9.0%	34	34.0%	1	1.0%	0	0.0%	0	0.0%	0	0.0%	0	0.0%	0	0.0%	0	0.0%	4	4.0%
	5th	5	0	0.0%	2	40.0%	0	0.0%	0	0.0%	0	0.0%	0	0.0%	0	0.0%	0	0.0%	2	40.0%	0	0.0%	0	0.0%	0	0.0%	0	0.0%	0	0.0%	0	0.0%	0	0.0%	0	0.0%	1	20.0%
	18th	115	27	23.5%	34	29.6%	0	0.0%	0	0.0%	0	0.0%	6	5.2%	0	0.0%	0	0.0%	5	4.3%	34	29.6%	0	0.0%	0	0.0%	0	0.0%	0	0.0%	0	0.0%	0	0.0%	0	0.0%	9	7.8%
	Central Total	282	74	26.2%	57	20.2%	4	1.4%	1	0.4%	0	0.0%	10	3.5%	2	0.7%	0	0.0%	31	11.0%	85	30.1%	1	0.4%	0	0.0%	0	0.0%	0	0.0%	0	0.0%	0	0.0%	17	6.0%		
Northeast Region																																						
	8th	35	3	8.6%	4	11.4%	0	0.0%	0	0.0%	0	0.0%	1	2.9%	0	0.0%	0	0.0%	3	8.6%	7	20.0%	0	0.0%	0	0.0%	0	0.0%	0	0.0%	0	0.0%	0	0.0%	0	0.0%	17	48.6%
	13th	5	0	0.0%	1	20.0%	0	0.0%	0	0.0%	0	0.0%	0	0.0%	0	0.0%	0	0.0%	0	0.0%	0	0.0%	0	0.0%	0	0.0%	0	0.0%	0	0.0%	0	0.0%	0	0.0%	4	80.0%		
	17th	47	7	14.9%	5	10.6%	2	4.3%	0	0.0%	0	0.0%	0	0.0%	0	0.0%	0	0.0%	4	8.5%	17	36.2%	0	0.0%	0	0.0%	0	0.0%	0	0.0%	0	0.0%	0	0.0%	0	0.0%	13	27.7%
	19th	51	8	15.7%	10	19.6%	8	15.7%	1	2.0%	0	0.0%	3	5.9%	8	15.7%	0	0.0%	3	5.9%	9	17.6%	0	0.0%	0	0.0%	0	0.0%	0	0.0%	0	0.0%	0	0.0%	0	0.0%	1	2.0%
	20th	32	2	6.3%	3	9.4%	0	0.0%	0	0.0%	0	0.0%	4	12.5%	0	0.0%	0	0.0%	1	3.1%	0	0.0%	0	0.0%	0	0.0%	0	0.0%	0	0.0%	0	0.0%	0	0.0%	0	0.0%	22	68.8%
	Northeast Total	170	20	11.8%	23	13.5%	10	5.9%	1	0.6%	0	0.0%	8	4.7%	8	4.7%	0	0.0%	11	6.5%	33	19.4%	0	0.0%	0	0.0%	0	0.0%	0	0.0%	0	0.0%	0	0.0%	56	32.9%		
Southern Region																																						
	3rd	0	0	0.0%	0	0.0%	0	0.0%	0	0.0%	0	0.0%	0	0.0%	0	0.0%	0	0.0%	0	0.0%	0	0.0%	0	0.0%	0	0.0%	0	0.0%	0	0.0%	0	0.0%	0	0.0%	0	0.0%	0	0.0%
	4th	70	21	30.0%	9	12.9%	4	5.7%	1	1.4%	0	0.0%	0	0.0%	0	0.0%	0	0.0%	8	11.4%	22	31.4%	0	0.0%	0	0.0%	0	0.0%	0	0.0%	4	5.7%	0	0.0%	0	0.0%	1	1.4%
	10th	37	4	10.8%	2	5.4%	3	8.1%	0	0.0%	0	0.0%	7	18.9%	0	0.0%	0	0.0%	16	43.2%	5	13.5%	0	0.0%	0	0.0%	0	0.0%	0	0.0%	0	0.0%	0	0.0%	0	0.0%	0	0.0%
	11th	15	2	13.3%	3	20.0%	0	0.0%	0	0.0%	0	0.0%	1	6.7%	0	0.0%	0	0.0%	0	0.0%	5	33.3%	0	0.0%	0	0.0%	0	0.0%	0	0.0%	0	0.0%	0	0.0%	4	26.7%		
	12th	6	0	0.0%	1	16.7%	0	0.0%	0	0.0%	0	0.0%	0	0.0%	0	0.0%	0	0.0%	0	0.0%	4	66.7%	0	0.0%	0	0.0%	0	0.0%	0	0.0%	0	0.0%	0	0.0%	1	16.7%		
	15th	3	1	33.3%	0	0.0%	0	0.0%	0	0.0%	0	0.0%	0	0.0%	0	0.0%	0	0.0%	1	33.3%	1	33.3%	0	0.0%	0	0.0%	0	0.0%	0	0.0%	0	0.0%	0	0.0%	0	0.0%	0	0.0%
	16th	2	0	0.0%	0	0.0%	0	0.0%	0	0.0%	0	0.0%	0	0.0%	0	0.0%	0	0.0%	1	50.0%	0	0.0%	0	0.0%	0	0.0%	0	0.0%	0	0.0%	0	0.0%	0	0.0%	1	50.0%		
	Southern Total	133	28	21.1%	15	11.3%	7	5.3%	1	0.8%	0	0.0%	8	6.0%	0	0.0%	0	0.0%	25	18.8%	38	28.6%	0	0.0%	0	0.0%	0	0.0%	0	0.0%	0	0.0%	4	3.0%	0	0.0%	7	5.3%
Western Region																																						
	6th	2	1	50.0%	0	0.0%	1	50.0%	0	0.0%	0	0.0%	0	0.0%	0	0.0%	0	0.0%	0	0.0%	0	0.0%	0	0.0%	0	0.0%	0	0.0%	0	0.0%	0	0.0%	0	0.0%	0	0.0%	0	0.0%
	7th	5	4	80.0%	0	0.0%	0	0.0%	0	0.0%	0	0.0%	0	0.0%	0	0.0%	0	0.0%	1	20.0%	0	0.0%	0	0.0%	0	0.0%	0	0.0%	0	0.0%	0	0.0%	0	0.0%	0	0.0%	0	0.0%
	9th	2	0	0.0%	0	0.0%	1	50.0%	0	0.0%	0	0.0%	0	0.0%	0	0.0%	0	0.0%	0	0.0%	0	0.0%	0	0.0%	0	0.0%	0	0.0%	0	0.0%	0	0.0%	0	0.0%	0	0.0%	1	50.0%
	14th	0	0	0.0%	0	0.0%	0	0.0%	0	0.0%	0	0.0%	0	0.0%	0	0.0%	0	0.0%	0	0.0%	0	0.0%	0	0.0%	0	0.0%	0	0.0%	0	0.0%	0	0.0%	0	0.0%	0	0.0%	0	0.0%
	21st	24	11	45.8%	5	20.8%	0	0.0%	0	0.0%	0	0.0%	1	4.2%	0	0.0%	0	0.0%	2	8.3%	4	16.7%	0	0.0%	0	0.0%	0	0.0%	0	0.0%	0	0.0%	0	0.0%	0	0.0%	1	4.2%
	22nd	0	0	0.0%	0	0.0%	0	0.0%	0	0.0%	0	0.0%	0	0.0%	0	0.0%	0	0.0%	0	0.0%	0	0.0%	0	0.0%	0	0.0%	0	0.0%	0	0.0%	0	0.0%	0	0.0%	0	0.0%	0	0.0%
	Western Total	33	16	48.5%	5	15.2%	2	6.1%	0	0.0%	0	0.0%	1	3.0%	0	0.0%	0	0.0%	3	9.1%	4	12.1%	0	0.0%	0	0.0%	0	0.0%	0	0.0%	0	0.0%	0	0.0%	2	6.1%		
Individual RD Totals		618	138	22.3%	100	16.2%	23	3.7%	3	0.5%	0	0.0%	27	4.4%	10	1.6%	0	0.0%	70	11.3%	160	25.9%	1	0.2%	0	0.0%	0	0.0%	0	0.0%	0	0.0%	4	0.6%	0	0.0%	82	13.3%
Statewide Totals		618	238	38.5%	26	4.2%	37	6.0%	37	6.0%	230	37.2%	1	0.2%	0	0.0%	0	0.0%	0	0.0%	0	0.0%	0	0.0%	0	0.0%	0	0.0%	0	0.0%	4	0.6%	0	0.0%	82	13.3%		

Central Region

SB94 Reason Detained by Judicial District

September 2014 New Admits



■ CENTRAL REGION, 282 New Admits

■ 5th JD, 5 New Admits

■ 18th JD, 115 New Admits

■ 1st JD, 62 New Admits

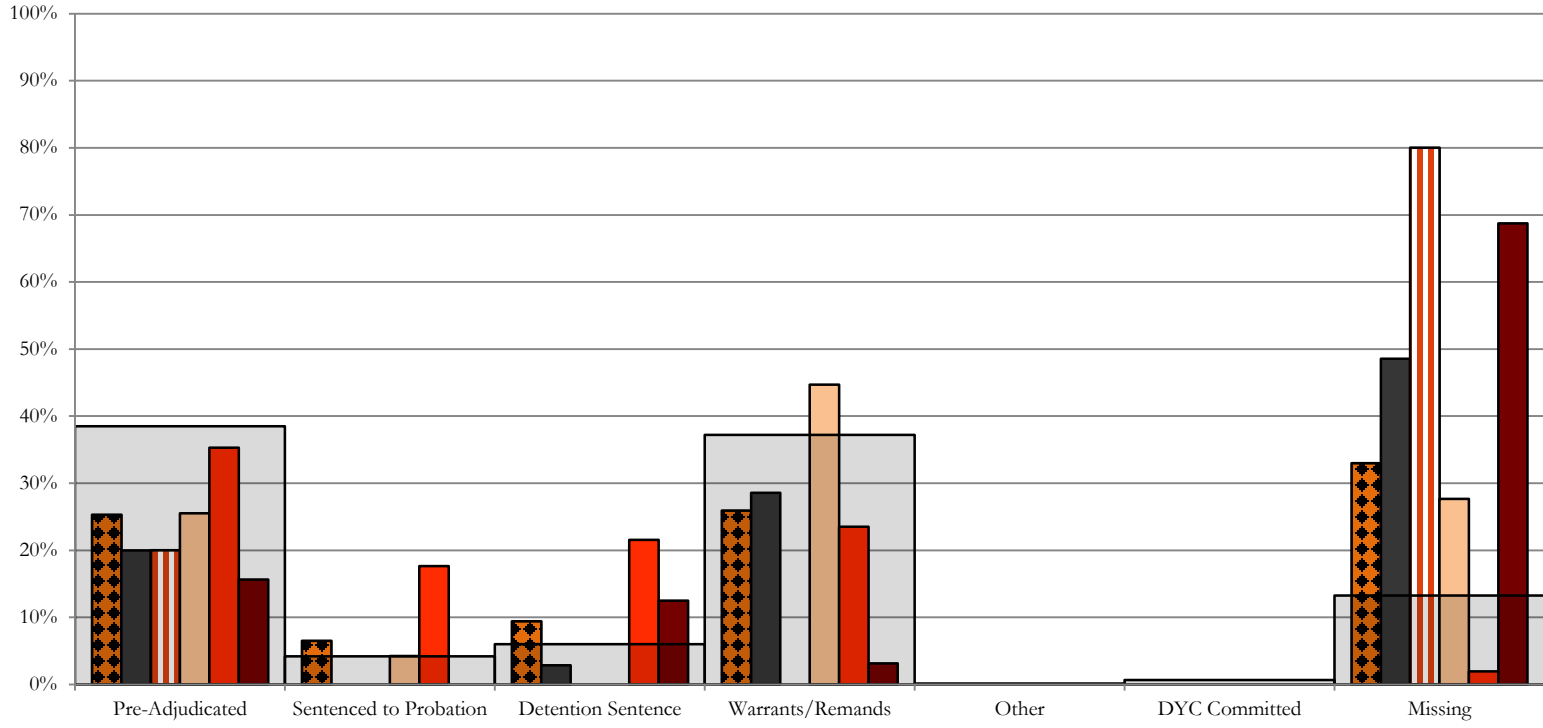
■ 2nd JD, 100 New Admits

■ STATEWIDE, 618 New Admits

Northeast Region

SB94 Reason Detained by Judicial District

September 2014 New Admits

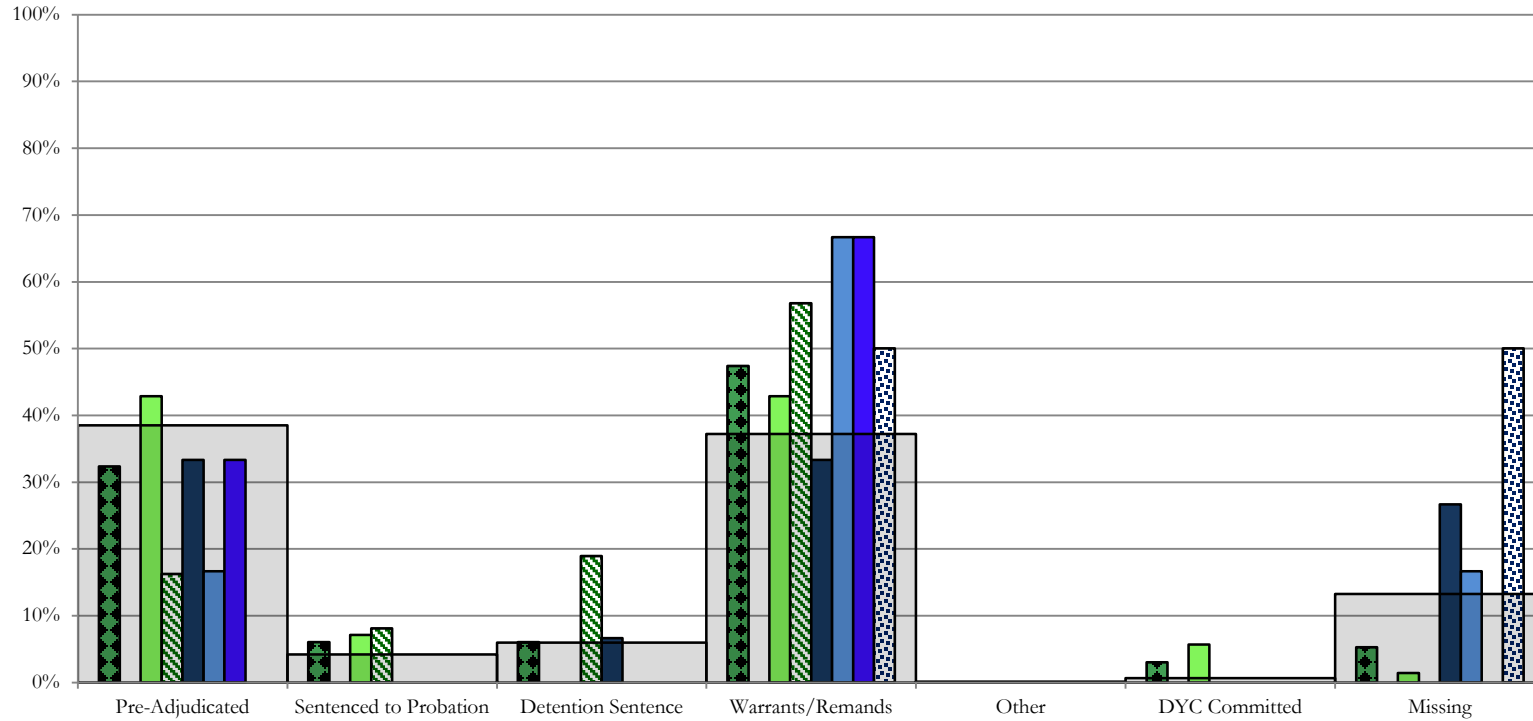


- NORTHEAST REGION, 170 New Admits
- 8th JD, 35 New Admits
- 13th JD, 5 New Admits
- 17th JD, 47 New Admits
- 19th JD, 51 New Admits
- 20th JD, 32 New Admits
- STATEWIDE, 618 New Admits

Southern Region

SB94 Reason Detained by Judicial District

September 2014 New Admits



■ SOUTHERN REGION, 133 New Admits

■ 4th JD, 70 New Admits

■ 11th JD, 15 New Admits

■ 15th JD, 3 New Admits

■ STATEWIDE, 618 New Admits

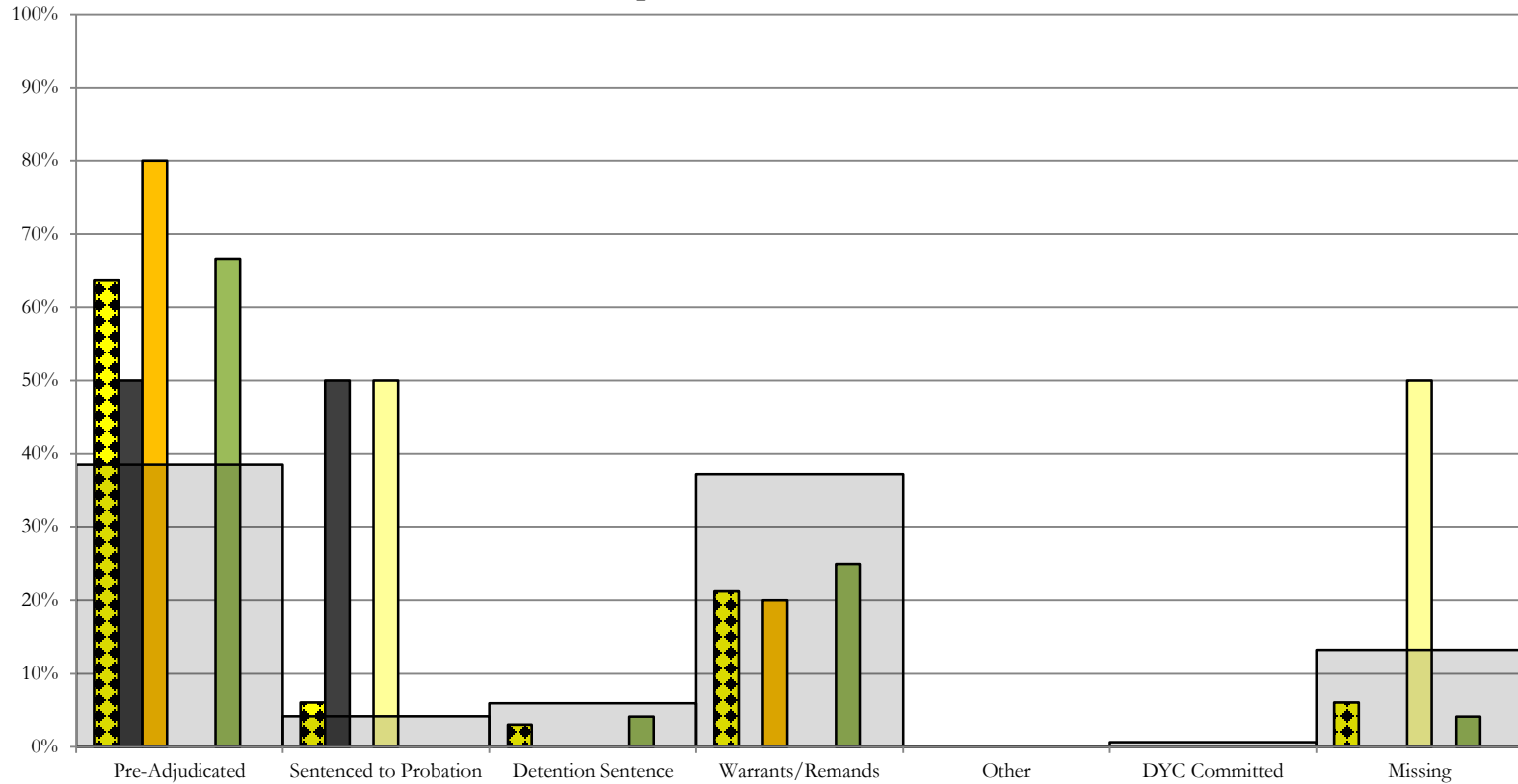
■ 3rd JD, 0 New Admits

■ 10th JD, 37 New Admits

■ 12th JD, 6 New Admits

■ 16th JD, 2 New Admits

Western Region SB94 Reason Detained by Judicial District September 2014 New Admits



■ WESTERN REGION, 33 New Admits

■ 7th JD, 5 New Admits

■ 14th JD, 0 New Admits

■ 22nd JD, 0 New Admits

■ 6th JD, 2 New Admits

■ 9th JD, 2 New Admits

■ 21st JD, 24 New Admits

■ STATEWIDE, 618 New Admits

September 2014 SB94 Supplemental Report

DYC Detention Maximum Youth Served by Judicial District¹

Region	JD	Detention Capacity	Detention ADP		Maximum Youth Served on a Single Day ^{2,3}			
			September 2014	YTD	September 2014		YTD	
					Number of Youth	% of Detention Capacity	Number of Youth	% of Detention Capacity
<i>Central Region</i>								
	1st	37	27.0	26.6	33	89.2%	33	89.2%
	2nd	64	56.4	51.2	64	100.0%	64	100.0%
	5th	4	4.3	4.2	5	125.0%	5	125.0%
	18th	61	48.4	50.0	58	95.1%	62	101.6%
Central Region		166	136.1	132.0	154	92.8%	154	92.8%
<i>Northeast Region</i>								
	8th	21	13.7	17.6	19	90.5%	28	133.3%
	13th	5	1.7	1.2	4	80.0%	4	80.0%
	17th	30	22.9	22.2	30	100.0%	30	100.0%
	19th	25	23.3	25.2	30	120.0%	33	132.0%
	20th	13	8.1	6.8	12	92.3%	13	100.0%
Northeast Region		94	69.7	73.0	85	90.4%	86	91.5%
<i>Southern Region</i>								
	3rd	2	0.0	0.5	0	0.0%	2	100.0%
	4th	51	42.5	34.8	49	96.1%	49	96.1%
	10th	13	12.5	12.8	16	123.1%	18	138.5%
	11th	8	3.7	3.9	7	87.5%	7	87.5%
	12th	4	1.3	0.9	2	50.0%	3	75.0%
	15th	2	1.4	2.2	3	150.0%	4	200.0%
	16th	3	1.8	1.7	3	100.0%	3	100.0%
Southern Region		83	63.2	56.8	72	86.7%	72	86.7%
<i>Western Region</i>								
	6th	5	2.7	2.5	4	80.0%	5	100.0%
	7th	7	3.4	3.3	6	85.7%	7	100.0%
	9th	6	2.1	1.7	3	50.0%	3	50.0%
	14th	3	0.0	0.7	0	0.0%	3	100.0%
	21st	14	14.2	12.3	19	135.7%	19	135.7%
	22nd	4	0.0	0.7	1	25.0%	3	75.0%
Western Region		39	22.5	21.2	30	76.9%	30	76.9%
<i>Missing JD or Multiple JDs</i>			1.4	1.1				
Statewide		382	292.9	284.0	316	82.7%	316	82.7%

¹ Maximum youth served is the highest number of youth in detention on a single day during the month or fiscal year.

² Regional figures are not the sum of judicial districts, but represent the maximum count on one day for the entire region.

³ State figures are not the sum of regional figures, but represent the maximum count on one day for the entire state.

September 2014

SB94 Supplemental Report

SB94 Community ADP by Judicial District

Region	JD	Pre-Adjudicated		Sentenced		Total Pre-Adjudicated and Sentenced	
		September 2014	YTD	September 2014	YTD	September 2014	YTD
<i>Central Region</i>							
	1st	147.8	135.8	29.9	29.4	177.7	165.2
	2nd	135.9	118.3	60.1	59.6	196.0	177.9
	5th	6.0	7.6	40.8	40.9	46.8	48.5
	18th	382.9	360.9	56.8	54.3	439.7	415.2
Central Total		672.7	622.6	187.5	184.2	860.2	806.8
<i>Northeast Region</i>							
	8th	46.6	45.6	23.2	23.7	69.8	69.3
	13th	42.4	37.6	25.2	22.3	67.6	60.0
	17th	89.9	77.7	88.1	83.1	177.9	160.8
	19th	42.4	45.3	38.6	34.1	80.9	79.4
	20th	39.6	34.8	34.0	29.4	73.6	64.3
Northeast Total		260.8	241.1	209.0	192.7	469.8	433.8
<i>Southern Region</i>							
	3rd	3.0	3.1	3.0	2.7	6.0	5.8
	4th	76.5	79.9	45.1	40.8	121.6	120.7
	10th	28.4	27.9	26.8	24.8	55.2	52.7
	11th	26.2	19.7	36.8	33.7	63.0	53.4
	12th	7.5	7.7	7.1	7.2	14.6	14.9
	15th	5.2	4.3	14.4	13.2	19.6	17.5
	16th	4.4	5.1	19.2	19.4	23.6	24.5
Southern Total		151.1	147.7	152.5	141.7	303.6	289.4
<i>Western Region</i>							
	6th	6.1	5.5	1.6	2.1	7.7	7.5
	7th	12.9	13.1	14.0	12.5	26.9	25.6
	9th	2.0	2.0	2.3	2.0	4.3	4.0
	14th	1.0	1.5	2.0	2.0	3.0	3.5
	21st	54.9	46.6	7.3	7.5	62.2	54.1
	22nd	8.7	6.5	0.0	0.1	8.7	6.7
Western Total		85.6	75.2	27.2	26.3	112.8	101.5
Statewide Total		1170.3	1086.5	576.1	544.9	1746.4	1631.5