

August 2014
FY 2014-2015
SB94 JDSAG SUPPLEMENTAL REPORT

Prepared by the Division of Youth Corrections (DYC)
Research and Evaluation Unit
September 18, 2014



COLORADO

**Office of Children,
Youth & Families**

Division of Youth Corrections

August 2014 SB94 Supplemental Report

DYC Commitment ADP & New Commitments by Judicial District

Region	JD ¹	2015 Population Estimates ²	ADP ³		New Commitments		
			August 2014	YTD	August 2014	YTD	YTD Rate ⁴
<i>Central Region</i>							
	1st	54,562	74.2	73.7	2	7	1.3
	2nd	58,395	152.8	157.0	2	11	1.9
	5th	10,073	7.0	6.6	0	1	1.0
	18th	115,459	99.5	98.6	9	12	1.0
Central Total		238,489	333.4	335.9	13	31	1.3
<i>Northeast Region</i>							
	8th	31,146	38.7	38.8	0	2	0.6
	13th	8,509	16.0	16.1	0	1	1.2
	17th	66,724	83.5	83.6	3	11	1.6
	19th	34,214	54.6	51.8	8	11	3.2
	20th	31,597	11.2	11.1	0	1	0.3
Northeast Total		172,190	203.9	201.4	11	26	1.5
<i>Southern Region</i>							
	3rd	1,993	2.0	2.0	0	0	0.0
	4th	79,018	106.5	109.3	6	6	0.8
	10th	18,161	26.0	25.9	2	2	1.1
	11th	7,322	10.6	9.9	2	3	4.1
	12th	5,216	8.6	9.3	0	0	0.0
	15th	2,182	2.1	2.5	0	0	0.0
	16th	2,902	4.0	3.7	0	1	3.4
Southern Total		116,794	159.7	162.6	10	12	1.0
<i>Western Region</i>							
	6th	6,346	13.7	12.7	1	1	1.6
	7th	10,564	10.4	10.4	0	0	0.0
	9th	9,448	12.3	12.4	0	0	0.0
	14th	5,479	1.0	1.0	0	0	0.0
	21st	15,437	26.8	26.2	2	2	1.3
	22nd	3,013	7.8	8.3	0	0	0.0
Western Total		50,287	72.0	71.0	3	3	0.6
Statewide Total		577,760	769.1	770.9	37	72	1.2

¹ JD represents the judicial district in which the client was committed. Regional totals are a sum of their respective judicial districts. Regional totals reported here may differ slightly from those reported in the Monthly Population Report, where region is defined by active caseloads.

² Source: DOLA 2015 Estimates

³ Due to rounding, totals shown may not be an exact sum of the subtotals.

⁴ Per 10,000 youth in the population

August 2014 SB94 Supplemental Report

DYC Detention ADP and New Detention Admissions by Judicial District

Region	JD	2015 Population Estimates ¹	ADP		New Admits		YTD New Admit Rate ²
			August 2014	YTD	August 2014	YTD	
<i>Central Region</i>							
	1st	54,562	25.5	26.4	57	111	20.3
	2nd	58,395	48.7	48.7	92	182	31.2
	5th	10,073	3.9	4.2	3	5	5.0
	18th	115,459	52.5	50.7	105	198	17.1
Central Total		238,489	130.6	130.0	257	496	20.8
<i>Northeast Region</i>							
	8th	31,146	20.5	19.5	32	80	25.7
	13th	8,509	1.1	0.9	12	15	17.6
	17th	66,724	20.9	21.9	37	79	11.8
	19th	34,214	24.7	26.1	50	99	28.9
	20th	31,597	8.0	6.2	29	56	17.7
Northeast Total		172,190	75.2	74.6	160	329	19.1
<i>Southern Region</i>							
	3rd	1,993	0.2	0.7	1	3	15.1
	4th	79,018	33.9	31.1	55	114	14.4
	10th	18,161	13.1	13.0	33	60	33.0
	11th	7,322	4.9	3.9	8	22	30.0
	12th	5,216	0.6	0.7	2	6	11.5
	15th	2,182	2.4	2.5	3	8	36.7
	16th	2,902	1.6	1.7	2	2	6.9
Southern Total		116,794	56.9	53.7	104	215	18.4
<i>Western Region</i>							
	6th	6,346	3.5	2.3	5	10	15.8
	7th	10,564	4.1	3.2	8	14	13.3
	9th	9,448	2.3	1.4	1	4	4.2
	14th	5,479	0.9	1.1	0	2	3.7
	21st	15,437	11.6	11.4	17	33	21.4
	22nd	3,013	0.7	1.1	3	7	23.2
Western Total		50,287	23.1	20.5	34	70	13.9
<i>Missing JD or Multiple JDs</i>			<i>1.4</i>	<i>1.0</i>			
Statewide Total		577,760	287.3	279.8	555	1,110	19.2

¹ Source: DOLA 2015 Estimates

² Per 10,000 youth in the population

August 2014 SB94 Supplemental Report

DYC Detention LOS by Judicial District

Region	JD	YTD Detention Releases	YTD LOS* (days)	LOS (days) Compared to State AVG
<i>Central Region</i>				
	1st	106	13.2	-2.0
	2nd	178	16.3	1.1
	5th	3	29.8	14.5
	18th	195	15.2	-0.1
Central Total		482	15.3	0.0
<i>Northeast Region</i>				
	8th	79	14.2	-1.0
	13th	13	8.5	-6.8
	17th	87	19.4	4.1
	19th	103	16.0	0.8
	20th	47	5.6	-9.7
Northeast Total		329	14.7	-0.6
<i>Southern Region</i>				
	3rd	4	12.4	-2.9
	4th	106	15.4	0.1
	10th	62	11.4	-3.9
	11th	16	9.8	-5.5
	12th	4	6.4	-8.9
	15th	9	17.2	1.9
	16th	2	18.2	2.9
Southern Total		203	13.6	-1.7
<i>Western Region</i>				
	6th	8	12.1	-3.1
	7th	13	8.5	-6.8
	9th	2	24.4	9.1
	14th	3	24.2	8.9
	21st	33	18.4	3.1
	22nd	7	11.7	-3.6
Western Total		66	15.4	0.1
Statewide Total		1,081	15.3	-

**Length of Stay figures should be cautiously interpreted during the first few months of a new fiscal year due to the small number of total discharges/releases. LOS figures become more reliable as the number of discharged/released youth accumulates over the course of the FY.*

August 2014 SB94 JDSAG Supplemental Report

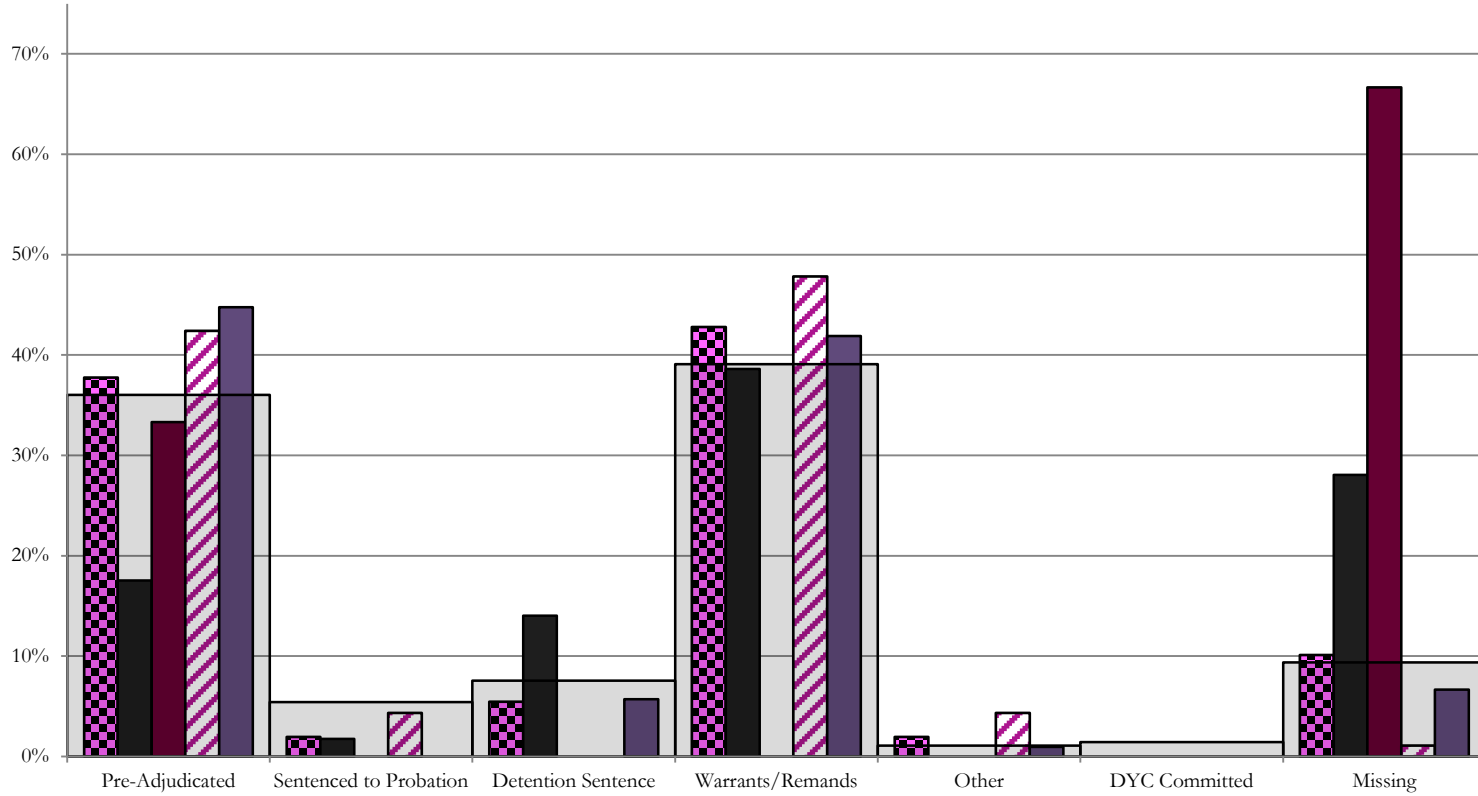
SB94 Reason Detained (RD) by Judicial District

Region	JD	Pre-Adjudicated				Sentenced to Probation				Detention Sentence						Warrants/Remands				Other						DYC Committed		Missing							
		Felony		Misdemeanor		Technical Violator		New Charges		Probation Sentence		Detention Sentence		Valid Court Order (VCO) Truancy		Awaiting DSS (Social Services) Placement		Failure to Appear (FTA)		Failure to Comply (FTC)		Interstate Compact on Juveniles (ICJ) Hold		Immigration Hold		No Bond Hold		Out-of-Country Warrant		Institutional		Parole		Missing	
		#	%	#	%	#	%	#	%	#	%	#	%	#	%	#	%	#	%	#	%	#	%	#	%	#	%	#	%	#	%	#	%	#	%
Central Region																																			
1st	57	6	10.5%	4	7.0%	1	1.8%	0	0.0%	0	0.0%	8	14.0%	0	0.0%	0	0.0%	5	8.8%	17	29.8%	0	0.0%	0	0.0%	0	0.0%	0	0.0%	0	0.0%	0	0.0%	16	28.1%
2nd	92	33	35.9%	6	6.5%	4	4.3%	0	0.0%	0	0.0%	0	0.0%	0	0.0%	0	0.0%	7	7.6%	37	40.2%	4	4.3%	0	0.0%	0	0.0%	0	0.0%	0	0.0%	0	0.0%	1	1.1%
5th	3	1	33.3%	0	0.0%	0	0.0%	0	0.0%	0	0.0%	0	0.0%	0	0.0%	0	0.0%	0	0.0%	0	0.0%	0	0.0%	0	0.0%	0	0.0%	0	0.0%	0	0.0%	2	66.7%		
18th	105	19	18.1%	28	26.7%	0	0.0%	0	0.0%	0	0.0%	6	5.7%	0	0.0%	0	0.0%	7	6.7%	37	35.2%	1	1.0%	0	0.0%	0	0.0%	0	0.0%	0	0.0%	0	0.0%	7	6.7%
Central Total	257	59	23.0%	38	14.8%	5	1.9%	0	0.0%	0	0.0%	14	5.4%	0	0.0%	0	0.0%	19	7.4%	91	35.4%	5	1.9%	0	0.0%	0	0.0%	0	0.0%	0	0.0%	0	0.0%	26	10.1%
Northeast Region																																			
8th	32	3	9.4%	3	9.4%	3	9.4%	0	0.0%	0	0.0%	1	3.1%	0	0.0%	0	0.0%	4	12.5%	15	46.9%	0	0.0%	0	0.0%	0	0.0%	0	0.0%	0	0.0%	0	0.0%	3	9.4%
13th	12	3	25.0%	3	25.0%	0	0.0%	0	0.0%	0	0.0%	0	0.0%	0	0.0%	0	0.0%	0	0.0%	2	16.7%	0	0.0%	0	0.0%	0	0.0%	0	0.0%	0	0.0%	4	33.3%		
17th	37	10	27.0%	6	16.2%	0	0.0%	0	0.0%	0	0.0%	1	2.7%	0	0.0%	0	0.0%	6	16.2%	12	32.4%	0	0.0%	0	0.0%	0	0.0%	0	0.0%	0	0.0%	0	0.0%	3	8.1%
19th	50	12	24.0%	10	20.0%	15	30.0%	0	0.0%	0	0.0%	2	4.0%	2	4.0%	1	2.0%	0	0.0%	6	12.0%	0	0.0%	0	0.0%	0	0.0%	0	0.0%	0	0.0%	2	4.0%		
20th	29	4	13.8%	3	10.3%	1	3.4%	0	0.0%	0	0.0%	4	13.8%	0	0.0%	0	0.0%	3	10.3%	6	20.7%	1	3.4%	0	0.0%	0	0.0%	0	0.0%	0	0.0%	7	24.1%		
Northeast Total	160	32	20.0%	25	15.6%	19	11.9%	0	0.0%	0	0.0%	8	5.0%	2	1.3%	1	0.6%	13	8.1%	41	25.6%	1	0.6%	0	0.0%	0	0.0%	0	0.0%	0	0.0%	0	0.0%	18	11.3%
Southern Region																																			
3rd	1	0	0.0%	1	100.0%	0	0.0%	0	0.0%	0	0.0%	0	0.0%	0	0.0%	0	0.0%	0	0.0%	0	0.0%	0	0.0%	0	0.0%	0	0.0%	0	0.0%	0	0.0%	0	0.0%	0	0.0%
4th	55	10	18.2%	6	10.9%	1	1.8%	1	1.8%	1	1.8%	0	0.0%	0	0.0%	1	1.8%	7	12.7%	22	40.0%	0	0.0%	0	0.0%	0	0.0%	0	0.0%	6	10.9%	0	0.0%	0	0.0%
10th	33	4	12.1%	5	15.2%	0	0.0%	0	0.0%	0	0.0%	12	36.4%	0	0.0%	0	0.0%	5	15.2%	2	6.1%	0	0.0%	0	0.0%	0	0.0%	2	6.1%	0	0.0%	3	9.1%		
11th	8	0	0.0%	1	12.5%	0	0.0%	1	12.5%	0	0.0%	1	12.5%	0	0.0%	0	0.0%	0	0.0%	5	62.5%	0	0.0%	0	0.0%	0	0.0%	0	0.0%	0	0.0%	0	0.0%		
12th	2	0	0.0%	1	50.0%	0	0.0%	0	0.0%	0	0.0%	0	0.0%	0	0.0%	0	0.0%	1	50.0%	0	0.0%	0	0.0%	0	0.0%	0	0.0%	0	0.0%	0	0.0%	0	0.0%		
15th	3	0	0.0%	1	33.3%	0	0.0%	0	0.0%	0	0.0%	0	0.0%	0	0.0%	0	0.0%	0	0.0%	1	33.3%	0	0.0%	0	0.0%	0	0.0%	0	0.0%	0	0.0%	1	33.3%		
16th	2	0	0.0%	0	0.0%	0	0.0%	0	0.0%	0	0.0%	0	0.0%	0	0.0%	0	0.0%	0	0.0%	0	0.0%	0	0.0%	0	0.0%	0	0.0%	0	0.0%	0	0.0%	2	100.0%		
Southern Total	104	14	13.5%	15	14.4%	1	1.0%	2	1.9%	1	1.0%	13	12.5%	0	0.0%	1	1.0%	13	12.5%	30	28.8%	0	0.0%	0	0.0%	0	0.0%	0	0.0%	8	7.7%	0	0.0%	6	5.8%
Western Region																																			
6th	5	3	60.0%	1	20.0%	0	0.0%	0	0.0%	0	0.0%	0	0.0%	0	0.0%	0	0.0%	0	0.0%	0	0.0%	0	0.0%	0	0.0%	0	0.0%	0	0.0%	0	0.0%	1	20.0%		
7th	8	2	25.0%	0	0.0%	1	12.5%	0	0.0%	0	0.0%	2	25.0%	0	0.0%	0	0.0%	0	0.0%	3	37.5%	0	0.0%	0	0.0%	0	0.0%	0	0.0%	0	0.0%	0	0.0%		
9th	1	0	0.0%	0	0.0%	1	100.0%	0	0.0%	0	0.0%	0	0.0%	0	0.0%	0	0.0%	0	0.0%	0	0.0%	0	0.0%	0	0.0%	0	0.0%	0	0.0%	0	0.0%	0	0.0%		
14th	0	0	0.0%	0	0.0%	0	0.0%	0	0.0%	0	0.0%	0	0.0%	0	0.0%	0	0.0%	0	0.0%	0	0.0%	0	0.0%	0	0.0%	0	0.0%	0	0.0%	0	0.0%	0	0.0%		
21st	17	2	11.8%	7	41.2%	1	5.9%	0	0.0%	0	0.0%	0	0.0%	0	0.0%	0	0.0%	1	5.9%	6	35.3%	0	0.0%	0	0.0%	0	0.0%	0	0.0%	0	0.0%	0	0.0%		
22nd	3	1	33.3%	1	33.3%	0	0.0%	0	0.0%	0	0.0%	0	0.0%	0	0.0%	0	0.0%	0	0.0%	0	0.0%	0	0.0%	0	0.0%	0	0.0%	0	0.0%	0	0.0%	1	33.3%		
Western Total	34	8	23.5%	9	26.5%	3	8.8%	0	0.0%	0	0.0%	2	5.9%	0	0.0%	0	0.0%	1	2.9%	9	26.5%	0	0.0%	0	0.0%	0	0.0%	0	0.0%	0	0.0%	2	5.9%		
Individual RD Totals	555	113	20.4%	87	15.7%	28	5.0%	2	0.4%	1	0.2%	37	6.7%	2	0.4%	2	0.4%	46	8.3%	171	30.8%	6	1.1%	0	0.0%	0	0.0%	0	0.0%	8	1.4%	0	0.0%	52	9.4%
Statewide Totals	555	200	36.0%	30	5.4%	42				7.6%					217	39.1%	6	1.1%	0	0.0%	0	0.0%	0	0.0%	0	0.0%	8	1.4%	52	9.4%					

Central Region

SB94 Reason Detained by Judicial District

August 2014 New Admits



■ CENTRAL REGION, 257 New Admits

■ 5th JD, 3 New Admits

■ 18th JD, 105 New Admits

■ 1st JD, 57 New Admits

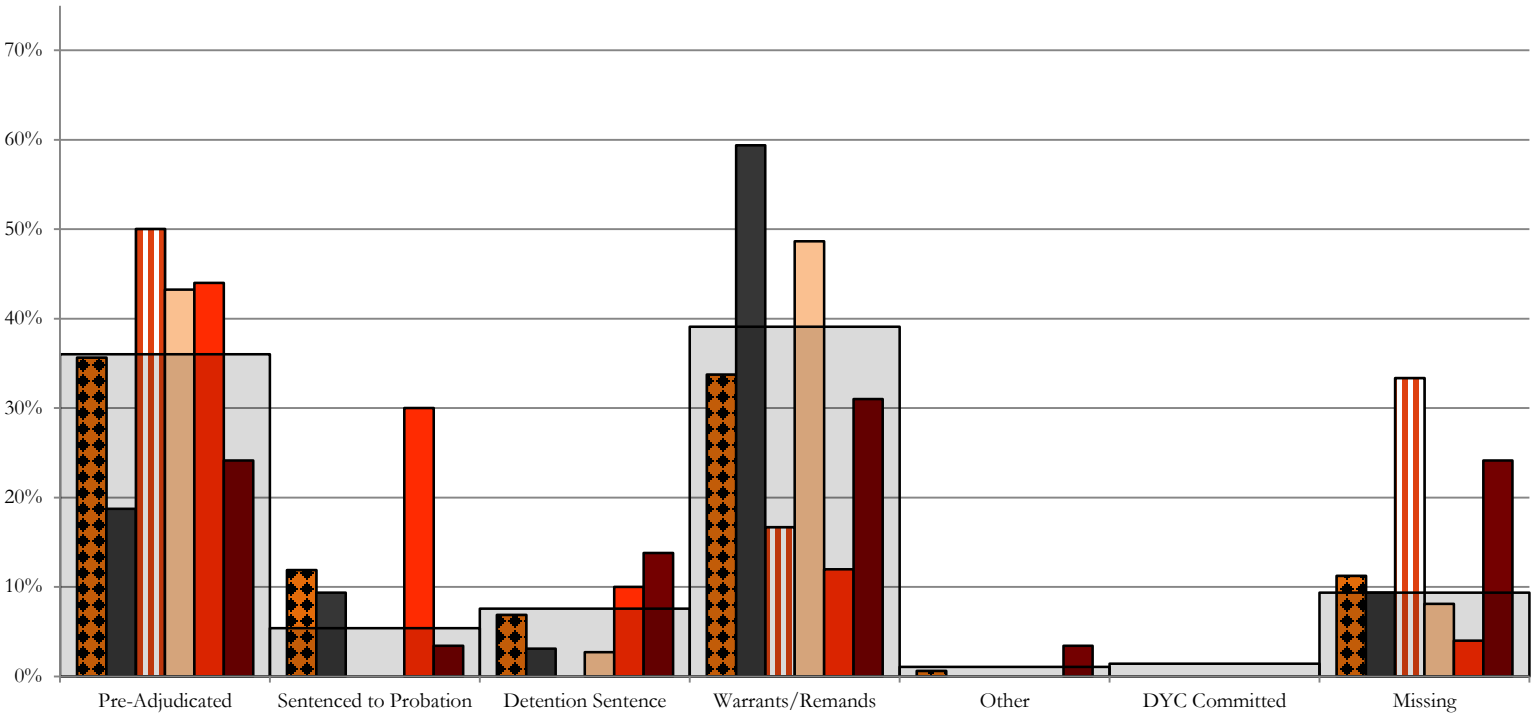
■ 2nd JD, 92 New Admits

■ STATEWIDE, 555 New Admits

Northeast Region

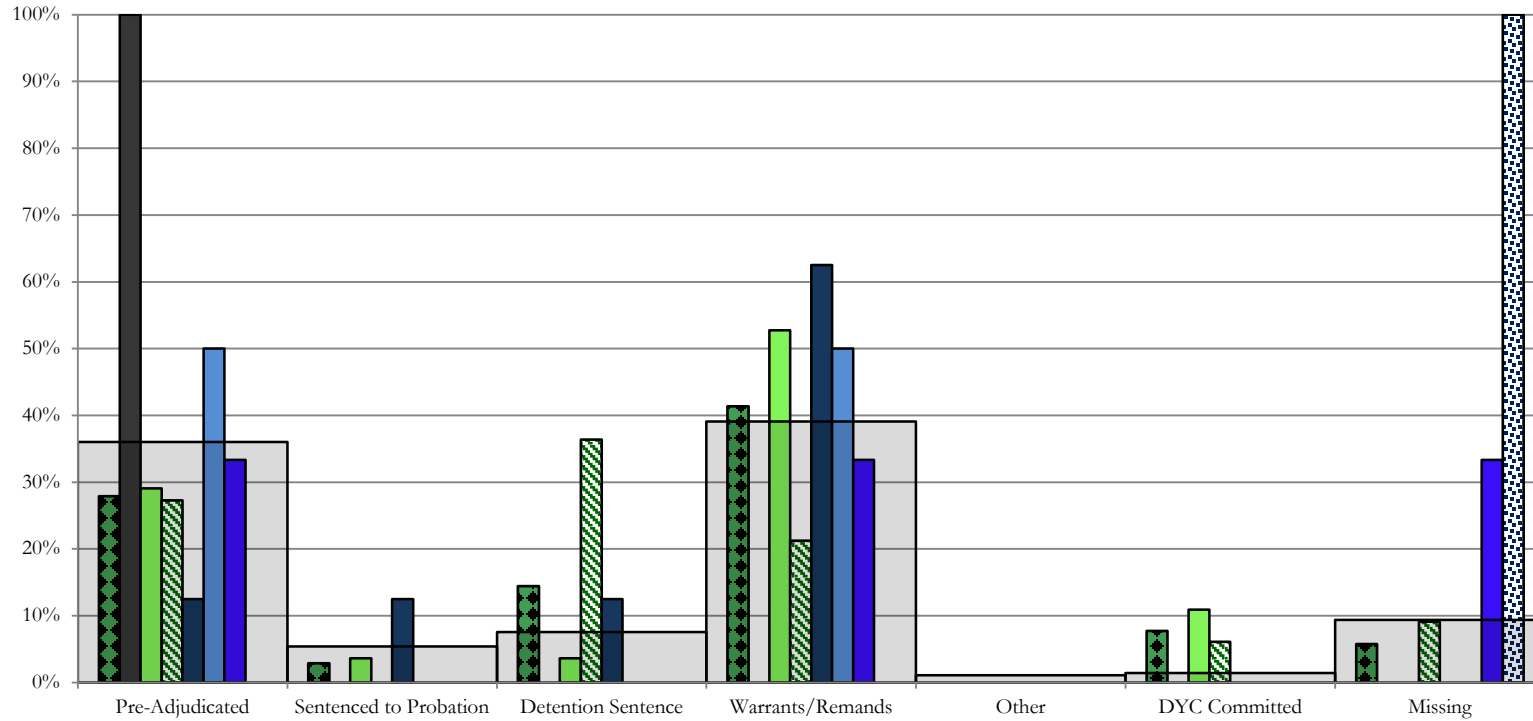
SB94 Reason Detained by Judicial District

August 2014 New Admits



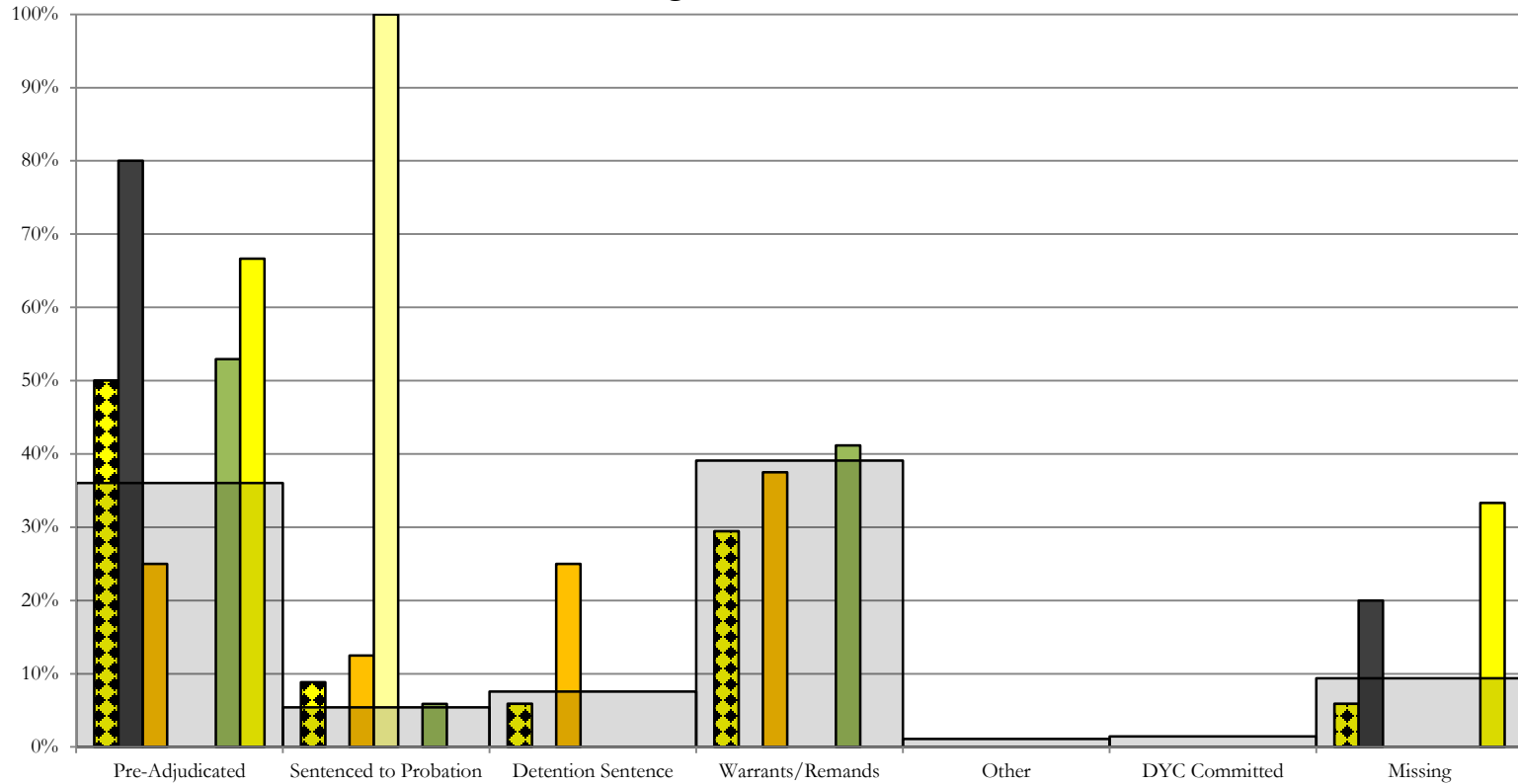
- NORTHEAST REGION, 160 New Admits
- 8th JD, 32 New Admits
- 13th JD, 12 New Admits
- 17th JD, 37 New Admits
- 19th JD, 50 New Admits
- 20th JD, 29 New Admits
- STATEWIDE, 555 New Admits

Southern Region SB94 Reason Detained by Judicial District August 2014 New Admits



- SOUTHERN REGION, 104 New Admits
- 4th JD, 55 New Admits
- 11th JD, 8 New Admits
- 15th JD, 3 New Admits
- STATEWIDE, 555 New Admits
- 3rd JD, 1 New Admits
- 10th JD, 33 New Admits
- 12th JD, 2 New Admits
- 16th JD, 2 New Admits

Western Region SB94 Reason Detained by Judicial District August 2014 New Admits



■ WESTERN REGION, 34 New Admits

■ 7th JD, 8 New Admits

■ 14th JD, 0 New Admits

■ 22nd JD, 3 New Admits

■ 6th JD, 5 New Admits

■ 9th JD, 1 New Admits

■ 21st JD, 17 New Admits

■ STATEWIDE, 555 New Admits

August 2014 SB94 Supplemental Report

DYC Detention Maximum Youth Served by Judicial District¹

Region	JD	Detention Capacity	Detention ADP		Maximum Youth Served on a Single Day ^{2,3}			
			August 2014	YTD	August 2014		YTD	
					Number of Youth	% of Detention Capacity	Number of Youth	% of Detention Capacity
<i>Central Region</i>								
	1st	37	25.5	26.4	33	89.2%	33	89.2%
	2nd	64	48.7	48.7	60	93.8%	60	93.8%
	5th	4	3.9	4.2	5	125.0%	5	125.0%
	18th	61	52.5	50.7	62	101.6%	62	101.6%
Central Region		166	130.6	130.0	145	87.3%	145	87.3%
<i>Northeast Region</i>								
	8th	21	20.5	19.5	28	133.3%	28	133.3%
	13th	5	1.1	0.9	4	80.0%	4	80.0%
	17th	30	20.9	21.9	28	93.3%	28	93.3%
	19th	25	24.7	26.1	30	120.0%	33	132.0%
	20th	13	8.0	6.2	13	100.0%	13	100.0%
Northeast Region		94	75.2	74.6	85	90.4%	86	91.5%
<i>Southern Region</i>								
	3rd	2	0.2	0.7	1	50.0%	2	100.0%
	4th	51	33.9	31.1	41	80.4%	41	80.4%
	10th	13	13.1	13.0	16	123.1%	18	138.5%
	11th	8	4.9	3.9	7	87.5%	7	87.5%
	12th	4	0.6	0.7	2	50.0%	3	75.0%
	15th	2	2.4	2.5	4	200.0%	4	200.0%
	16th	3	1.6	1.7	2	66.7%	2	66.7%
Southern Region		83	56.9	53.7	69	83.1%	69	83.1%
<i>Western Region</i>								
	6th	5	3.5	2.3	5	100.0%	5	100.0%
	7th	7	4.1	3.2	7	100.0%	7	100.0%
	9th	6	2.3	1.4	3	50.0%	3	50.0%
	14th	3	0.9	1.1	1	33.3%	3	100.0%
	21st	14	11.6	11.4	16	114.3%	16	114.3%
	22nd	4	0.7	1.1	2	50.0%	3	75.0%
Western Region		39	23.1	20.5	30	76.9%	30	76.9%
<i>Missing JD or Multiple JDs</i>			1.4	1.0				
Statewide		382	287.3	279.8	310	81.2%	310	81.2%

¹ Maximum youth served is the highest number of youth in detention on a single day during the month or fiscal year.

² Regional figures are not the sum of judicial districts, but represent the maximum count on one day for the entire region.

³ State figures are not the sum of regional figures, but represent the maximum count on one day for the entire state.

August 2014

SB94 Supplemental Report

SB94 Community ADP by Judicial District

Region	JD	Pre-Adjudicated		Sentenced		Total Pre-Adjudicated and Sentenced	
		August 2014	YTD	August 2014	YTD	August 2014	YTD
<i>Central Region</i>							
	1st	132.3	130.3	28.4	29.2	160.7	159.4
	2nd	121.7	110.0	54.1	55.6	175.9	165.6
	5th	16.0	16.0	36.2	36.0	52.2	52.1
	18th	374.9	354.0	51.5	53.1	426.4	407.1
Central Total		645.0	610.2	170.2	173.9	815.2	784.1
<i>Northeast Region</i>							
	8th	44.9	42.8	23.4	21.8	68.3	64.6
	13th	37.6	36.4	23.4	20.9	61.0	57.3
	17th	79.6	75.4	78.1	76.4	157.8	151.8
	19th	46.9	46.7	34.9	33.2	81.8	80.0
	20th	37.9	35.8	27.7	27.5	65.6	63.3
Northeast Total		247.0	237.0	187.4	179.9	434.4	417.0
<i>Southern Region</i>							
	3rd	3.0	3.1	3.0	2.5	6.0	5.7
	4th	74.4	80.9	40.4	38.5	114.9	119.5
	10th	26.5	27.9	25.0	24.2	51.5	52.1
	11th	20.4	16.5	34.2	32.2	54.6	48.7
	12th	8.0	7.8	7.6	7.3	15.6	15.1
	15th	4.1	3.9	11.0	10.5	15.1	14.4
	16th	12.3	13.0	19.0	19.5	31.3	32.5
Southern Total		148.8	153.2	140.2	134.8	289.0	288.0
<i>Western Region</i>							
	6th	6.2	5.1	1.0	1.3	7.2	6.5
	7th	11.7	12.2	14.0	12.8	25.7	25.0
	9th	2.0	1.6	2.4	1.9	4.4	3.5
	14th	1.9	1.8	2.0	2.0	3.9	3.8
	21st	48.6	42.6	7.0	7.6	55.6	50.3
	22nd	6.2	5.5	0.0	0.2	6.2	5.7
Western Total		76.6	68.8	26.4	25.9	103.0	94.7
Statewide Total		1117.3	1069.3	524.3	514.5	1641.6	1583.8