

July 2014 FY 2014-2015 SB94 JDSAG SUPPLEMENTAL REPORT

Prepared by the Division of Youth Corrections (DYC)
Research and Evaluation Unit
September 2, 2014



COLORADO

**Office of Children,
Youth & Families**

Division of Youth Corrections

July 2014 SB94 Supplemental Report

DYC Commitment ADP & New Commitments by Judicial District

Region	JD ¹	2015 Population Estimates ²	ADP ³		New Commitments		
			July 2014	YTD	July 2014	YTD	YTD Rate ⁴
<i>Central Region</i>							
	1st	54,562	73.3	73.3	5	5	0.9
	2nd	58,395	161.3	161.3	9	9	1.5
	5th	10,073	6.1	6.1	1	1	1.0
	18th	115,459	97.5	97.5	3	3	0.3
Central Total		238,489	338.2	338.2	18	18	0.8
<i>Northeast Region</i>							
	8th	31,146	38.8	38.8	2	2	0.6
	13th	8,509	16.2	16.2	1	1	1.2
	17th	66,724	84.7	84.7	8	8	1.2
	19th	34,214	49.1	49.1	3	3	0.9
	20th	31,597	11.0	11.0	1	1	0.3
Northeast Total		172,190	199.8	199.8	15	15	0.9
<i>Southern Region</i>							
	3rd	1,993	2.0	2.0	0	0	0.0
	4th	79,018	112.8	112.8	0	0	0.0
	10th	18,161	25.8	25.8	0	0	0.0
	11th	7,322	9.2	9.2	1	1	1.4
	12th	5,216	10.0	10.0	0	0	0.0
	15th	2,182	3.0	3.0	0	0	0.0
	16th	2,902	3.4	3.4	1	1	3.4
Southern Total		116,794	166.3	166.3	2	2	0.2
<i>Western Region</i>							
	6th	6,346	11.7	11.7	0	0	0.0
	7th	10,564	10.4	10.4	0	0	0.0
	9th	9,448	12.5	12.5	0	0	0.0
	14th	5,479	1.0	1.0	0	0	0.0
	21st	15,437	25.5	25.5	0	0	0.0
	22nd	3,013	8.8	8.8	0	0	0.0
Western Total		50,287	70.0	70.0	0	0	0.0
Statewide Total		577,760	774.3	774.3	35	35	0.6

¹ JD represents the judicial district in which the client was committed. Regional totals are a sum of their respective judicial districts. Regional totals reported here may differ slightly from those reported in the Monthly Population Report, where region is defined by active caseloads.

² Source: DOLA 2015 Estimates

³ Due to rounding, totals shown may not be an exact sum of the subtotals.

⁴ Per 10,000 youth in the population

July 2014 SB94 Supplemental Report

DYC Detention ADP and New Detention Admissions by Judicial District

Region	JD	2015 Population Estimates ¹	ADP		New Admits		YTD New Admit Rate ²
			July 2014	YTD	July 2014	YTD	
<i>Central Region</i>							
	1st	54,562	27.1	27.1	54	54	9.9
	2nd	58,395	48.7	48.7	90	90	15.4
	5th	10,073	4.4	4.4	2	2	2.0
	18th	115,459	48.9	48.9	93	93	8.1
Central Total		238,489	129.1	129.1	239	239	10.0
<i>Northeast Region</i>							
	8th	31,146	18.4	18.4	48	48	15.4
	13th	8,509	0.7	0.7	3	3	3.5
	17th	66,724	23.0	23.0	42	42	6.3
	19th	34,214	27.8	27.8	49	49	14.3
	20th	31,597	4.3	4.3	27	27	8.5
Northeast Total		172,190	74.3	74.3	169	169	9.8
<i>Southern Region</i>							
	3rd	1,993	1.1	1.1	2	2	10.0
	4th	79,018	28.3	28.3	59	59	7.5
	10th	18,161	12.9	12.9	27	27	14.9
	11th	7,322	2.9	2.9	14	14	19.1
	12th	5,216	0.9	0.9	4	4	7.7
	15th	2,182	2.6	2.6	5	5	22.9
	16th	2,902	1.8	1.8	0	0	0.0
Southern Total		116,794	50.5	50.5	111	111	9.5
<i>Western Region</i>							
	6th	6,346	1.2	1.2	5	5	7.9
	7th	10,564	2.4	2.4	6	6	5.7
	9th	9,448	0.5	0.5	3	3	3.2
	14th	5,479	1.3	1.3	2	2	3.7
	21st	15,437	11.2	11.2	16	16	10.4
	22nd	3,013	1.4	1.4	4	4	13.3
Western Total		50,287	18.0	18.0	36	36	7.2
<i>Missing JD or Multiple JDs</i>			<i>0.6</i>	<i>0.6</i>			
Statewide Total		577,760	272.4	272.4	555	555	9.6

¹ Source: DOLA 2015 Estimates

² Per 10,000 youth in the population

July 2014 SB94 Supplemental Report

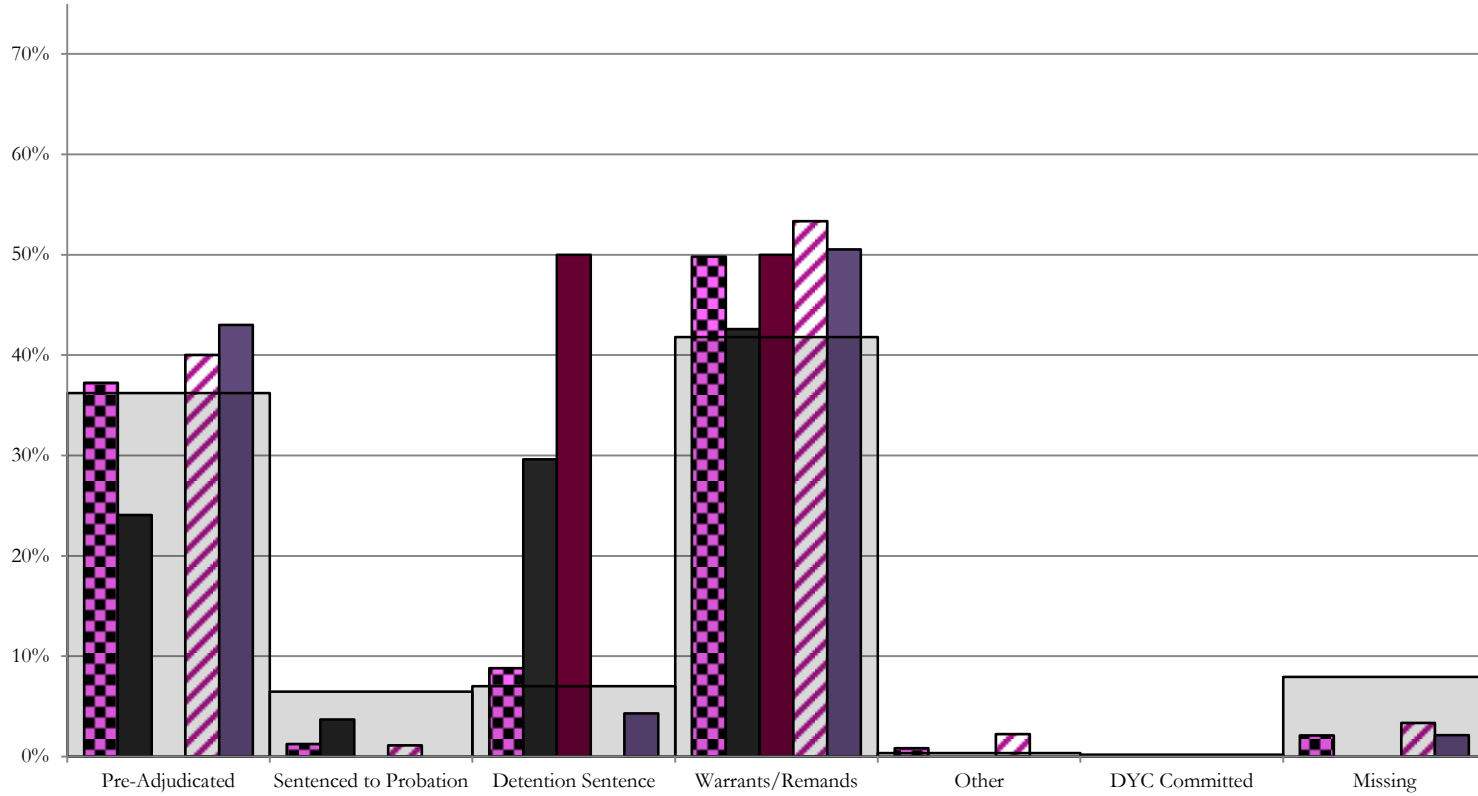
DYC Detention LOS by Judicial District				
Region	JD	YTD Detention Releases	YTD LOS (days)	LOS (days) Compared to State AVG
<i>Central Region</i>				
	1st	50	11.1	-3.9
	2nd	91	16.2	1.2
	5th	0	0.0	-15.0
	18th	90	16.1	1.1
Central Total		231	15.1	0.0
<i>Northeast Region</i>				
	8th	38	10.9	-4.1
	13th	4	23.9	8.9
	17th	44	23.0	7.9
	19th	46	14.5	-0.5
	20th	21	5.1	-9.9
Northeast Total		153	15.0	0.0
<i>Southern Region</i>				
	3rd	3	14.7	-0.4
	4th	57	15.0	0.0
	10th	30	14.4	-0.6
	11th	8	8.5	-6.5
	12th	4	6.5	-8.6
	15th	5	14.1	-1.0
	16th	1	36.8	21.7
Southern Total		108	14.2	-0.8
<i>Western Region</i>				
	6th	5	9.9	-5.1
	7th	5	9.9	-5.1
	9th	0	0.0	-15.0
	14th	2	4.1	-10.9
	21st	15	13.7	-1.3
	22nd	4	10.7	-4.3
Western Total		31	11.5	-3.5
Statewide Total		524	15.0	-

July 2014 SB94 JDSAG Supplemental Report

SB94 Reason Detained (RD) by Judicial District

Region	JD	Pre-Adjudicated				Sentenced to Probation				Detention Sentence						Warrants/Remands				Other						DYC Committed		Missing								
		Felony		Misdemeanor		Technical Violator	New Charges		Probation Sentence	Detention Sentence	Valid Court Order (VCO) Truancy	Awaiting DSS (Social Services) Placement	Failure to Appear (FTA)		Failure to Comply (FTC)		Interstate Compact on Juveniles (ICJ) Hold	Immigration Hold	No Bond Hold		Out-of-Country Warrant	Institutional	Parole		Missing											
		#	%	#	%		#	%					#	%	#	%			#	%			#	%	#	%	#	%	#	%	#	%	#	%		
Central Region																																				
	1st	54	5	9.3%	8	14.8%	2	3.7%	0	0.0%	0	0.0%	16	29.6%	0	0.0%	0	0.0%	9	16.7%	14	25.9%	0	0.0%	0	0.0%	0	0.0%	0	0.0%	0	0.0%	0	0.0%	0	0.0%
	2nd	90	28	31.1%	8	8.9%	1	1.1%	0	0.0%	0	0.0%	0	0.0%	0	0.0%	0	0.0%	16	17.8%	32	35.6%	2	2.2%	0	0.0%	0	0.0%	0	0.0%	0	0.0%	0	0.0%	3	3.3%
	5th	2	0	0.0%	0	0.0%	0	0.0%	0	0.0%	0	0.0%	1	50.0%	0	0.0%	0	0.0%	0	0.0%	1	50.0%	0	0.0%	0	0.0%	0	0.0%	0	0.0%	0	0.0%	0	0.0%	0	0.0%
	18th	93	18	19.4%	22	23.7%	0	0.0%	0	0.0%	0	0.0%	4	4.3%	0	0.0%	0	0.0%	11	11.8%	36	38.7%	0	0.0%	0	0.0%	0	0.0%	0	0.0%	0	0.0%	0	0.0%	2	2.2%
Central Total		239	51	21.3%	38	15.9%	3	1.3%	0	0.0%	0	0.0%	21	8.8%	0	0.0%	0	0.0%	36	15.1%	83	34.7%	2	0.8%	0	0.0%	0	0.0%	0	0.0%	0	0.0%	5	2.1%		
Northeast Region																																				
	8th	48	10	20.8%	5	10.4%	4	8.3%	0	0.0%	0	0.0%	2	4.2%	0	0.0%	0	0.0%	3	6.3%	19	39.6%	0	0.0%	0	0.0%	0	0.0%	0	0.0%	0	0.0%	0	0.0%	5	10.4%
	13th	3	0	0.0%	1	33.3%	0	0.0%	0	0.0%	0	0.0%	0	0.0%	0	0.0%	0	0.0%	0	0.0%	1	33.3%	0	0.0%	0	0.0%	0	0.0%	0	0.0%	0	0.0%	1	33.3%		
	17th	42	9	21.4%	2	4.8%	0	0.0%	0	0.0%	0	0.0%	0	0.0%	0	0.0%	0	0.0%	4	9.5%	21	50.0%	0	0.0%	0	0.0%	0	0.0%	0	0.0%	0	0.0%	7	16.7%		
	19th	49	16	32.7%	9	18.4%	16	32.7%	0	0.0%	0	0.0%	1	2.0%	0	0.0%	0	0.0%	1	2.0%	5	10.2%	0	0.0%	0	0.0%	0	0.0%	0	0.0%	0	0.0%	1	2.0%		
	20th	27	3	11.1%	3	11.1%	2	7.4%	0	0.0%	0	0.0%	4	14.8%	0	0.0%	0	0.0%	0	0.0%	2	7.4%	0	0.0%	0	0.0%	0	0.0%	0	0.0%	0	0.0%	13	48.1%		
Northeast Total		169	38	22.5%	20	11.8%	22	13.0%	0	0.0%	0	0.0%	7	4.1%	0	0.0%	0	0.0%	8	4.7%	48	28.4%	0	0.0%	0	0.0%	0	0.0%	0	0.0%	0	0.0%	26	15.4%		
Southern Region																																				
	3rd	2	1	50.0%	0	0.0%	0	0.0%	0	0.0%	0	0.0%	0	0.0%	0	0.0%	0	0.0%	0	0.0%	1	50.0%	0	0.0%	0	0.0%	0	0.0%	0	0.0%	0	0.0%	0	0.0%	0	0.0%
	4th	59	15	25.4%	7	11.9%	3	5.1%	2	3.4%	0	0.0%	0	0.0%	0	0.0%	0	0.0%	5	8.5%	20	33.9%	0	0.0%	0	0.0%	0	0.0%	0	0.0%	1	1.7%	0	0.0%	6	10.2%
	10th	27	7	25.9%	0	0.0%	0	0.0%	0	0.0%	0	0.0%	9	33.3%	0	0.0%	0	0.0%	7	25.9%	4	14.8%	0	0.0%	0	0.0%	0	0.0%	0	0.0%	0	0.0%	0	0.0%	0	0.0%
	11th	14	3	21.4%	3	21.4%	0	0.0%	0	0.0%	0	0.0%	0	0.0%	0	0.0%	0	0.0%	1	7.1%	4	28.6%	0	0.0%	0	0.0%	0	0.0%	0	0.0%	0	0.0%	3	21.4%		
	12th	4	0	0.0%	1	25.0%	0	0.0%	0	0.0%	0	0.0%	0	0.0%	0	0.0%	0	0.0%	0	0.0%	3	75.0%	0	0.0%	0	0.0%	0	0.0%	0	0.0%	0	0.0%	0	0.0%		
	15th	5	0	0.0%	0	0.0%	0	0.0%	0	0.0%	0	0.0%	1	20.0%	0	0.0%	0	0.0%	0	0.0%	3	60.0%	0	0.0%	0	0.0%	0	0.0%	0	0.0%	0	0.0%	1	20.0%		
	16th	0	0	0.0%	0	0.0%	0	0.0%	0	0.0%	0	0.0%	0	0.0%	0	0.0%	0	0.0%	0	0.0%	2	0.0%	0	0.0%	0	0.0%	0	0.0%	0	0.0%	0	0.0%	0	0.0%		
Southern Total		111	26	23.4%	11	9.9%	3	2.7%	2	1.8%	0	0.0%	10	9.0%	0	0.0%	0	0.0%	13	11.7%	35	31.5%	0	0.0%	0	0.0%	0	0.0%	0	0.0%	1	0.9%	0	0.0%	10	9.0%
Western Region																																				
	6th	5	0	0.0%	0	0.0%	3	60.0%	0	0.0%	0	0.0%	0	0.0%	0	0.0%	0	0.0%	0	0.0%	1	20.0%	0	0.0%	0	0.0%	0	0.0%	0	0.0%	0	0.0%	1	20.0%		
	7th	6	2	33.3%	0	0.0%	0	0.0%	0	0.0%	0	0.0%	0	0.0%	0	0.0%	0	0.0%	0	0.0%	3	50.0%	0	0.0%	0	0.0%	0	0.0%	0	0.0%	0	0.0%	1	16.7%		
	9th	3	1	33.3%	0	0.0%	2	66.7%	0	0.0%	0	0.0%	0	0.0%	0	0.0%	0	0.0%	0	0.0%	0	0.0%	0	0.0%	0	0.0%	0	0.0%	0	0.0%	0	0.0%	0	0.0%		
	14th	2	1	50.0%	1	50.0%	0	0.0%	0	0.0%	0	0.0%	0	0.0%	0	0.0%	0	0.0%	0	0.0%	0	0.0%	0	0.0%	0	0.0%	0	0.0%	0	0.0%	0	0.0%	0	0.0%		
	21st	16	7	43.8%	3	18.8%	1	6.3%	0	0.0%	0	0.0%	1	6.3%	0	0.0%	0	0.0%	0	0.0%	3	18.8%	0	0.0%	0	0.0%	0	0.0%	0	0.0%	0	0.0%	1	6.3%		
	22nd	4	2	50.0%	0	0.0%	0	0.0%	0	0.0%	0	0.0%	0	0.0%	0	0.0%	0	0.0%	2	50.0%	0	0.0%	0	0.0%	0	0.0%	0	0.0%	0	0.0%	0	0.0%	0	0.0%		
Western Total		36	13	36.1%	4	11.1%	6	16.7%	0	0.0%	0	0.0%	1	2.8%	0	0.0%	0	0.0%	0	0.0%	9	25.0%	0	0.0%	0	0.0%	0	0.0%	0	0.0%	0	0.0%	3	8.3%		
Individual RD Totals		555	128	23.1%	73	13.2%	34	6.1%	2	0.4%	0	0.0%	39	7.0%	0	0.0%	0	0.0%	57	10.3%	175	31.5%	2	0.4%	0	0.0%	0	0.0%	0	0.0%	1	0.2%	0	0.0%	44	7.9%
Statewide Totals		555	201	36.2%	36	6.5%	39	7.0%	0	0.0%	0	0.0%	39	7.0%	0	0.0%	0	0.0%	232	41.8%	2	0.4%	0	0.0%	0	0.0%	0	0.0%	1	0.2%	0	0.0%	44	7.9%		

Central Region SB94 Reason Detained by Judicial District July 2014 New Admits



■ CENTRAL REGION, 239 New Admits

■ 5th JD, 2 New Admits

■ 18th JD, 93 New Admits

■ 1st JD, 54 New Admits

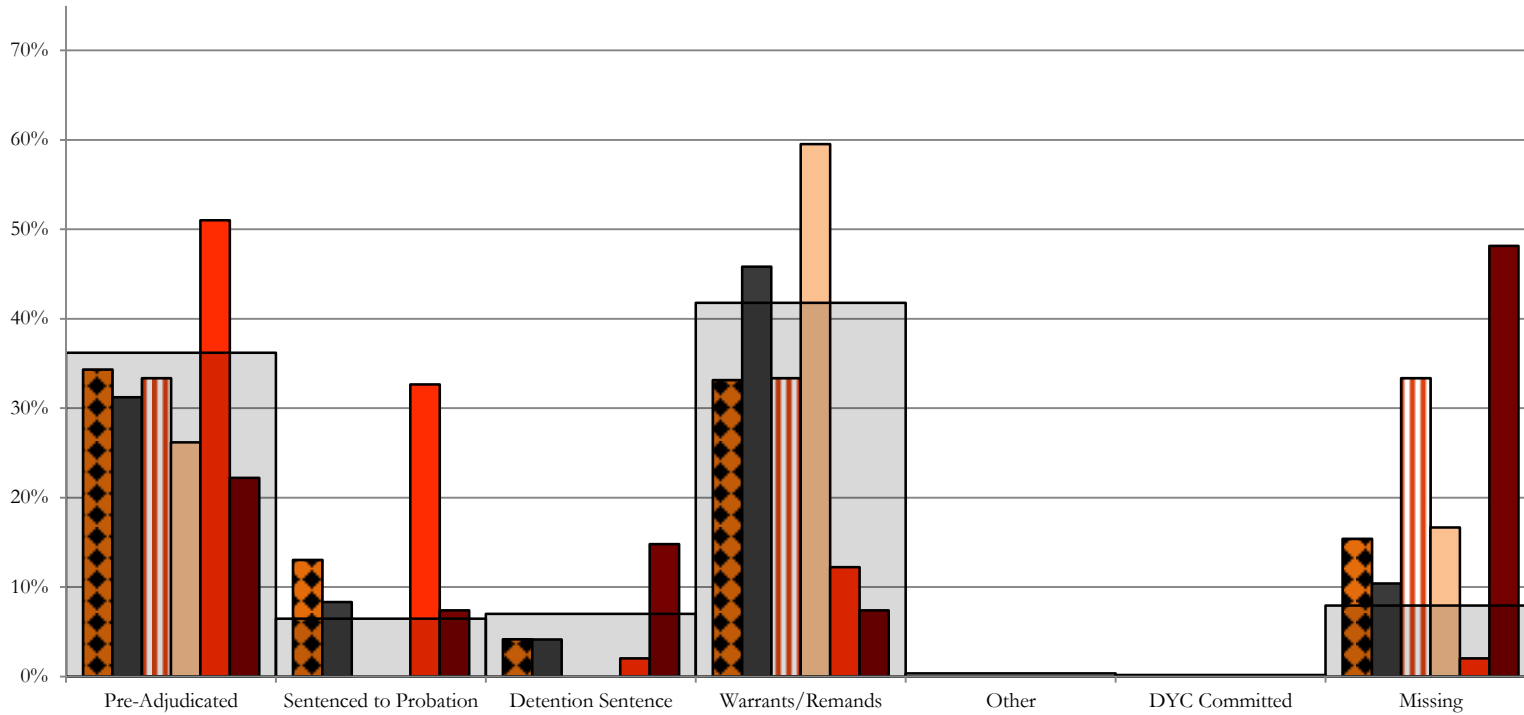
■ 2nd JD, 90 New Admits

■ STATEWIDE, 555 New Admits

Northeast Region

SB94 Reason Detained by Judicial District

July 2014 New Admits



■ NORTHEAST REGION, 169 New Admits

■ 8th JD, 48 New Admits

■ 13th JD, 3 New Admits

■ 17th JD, 42 New Admits

■ 19th JD, 49 New Admits

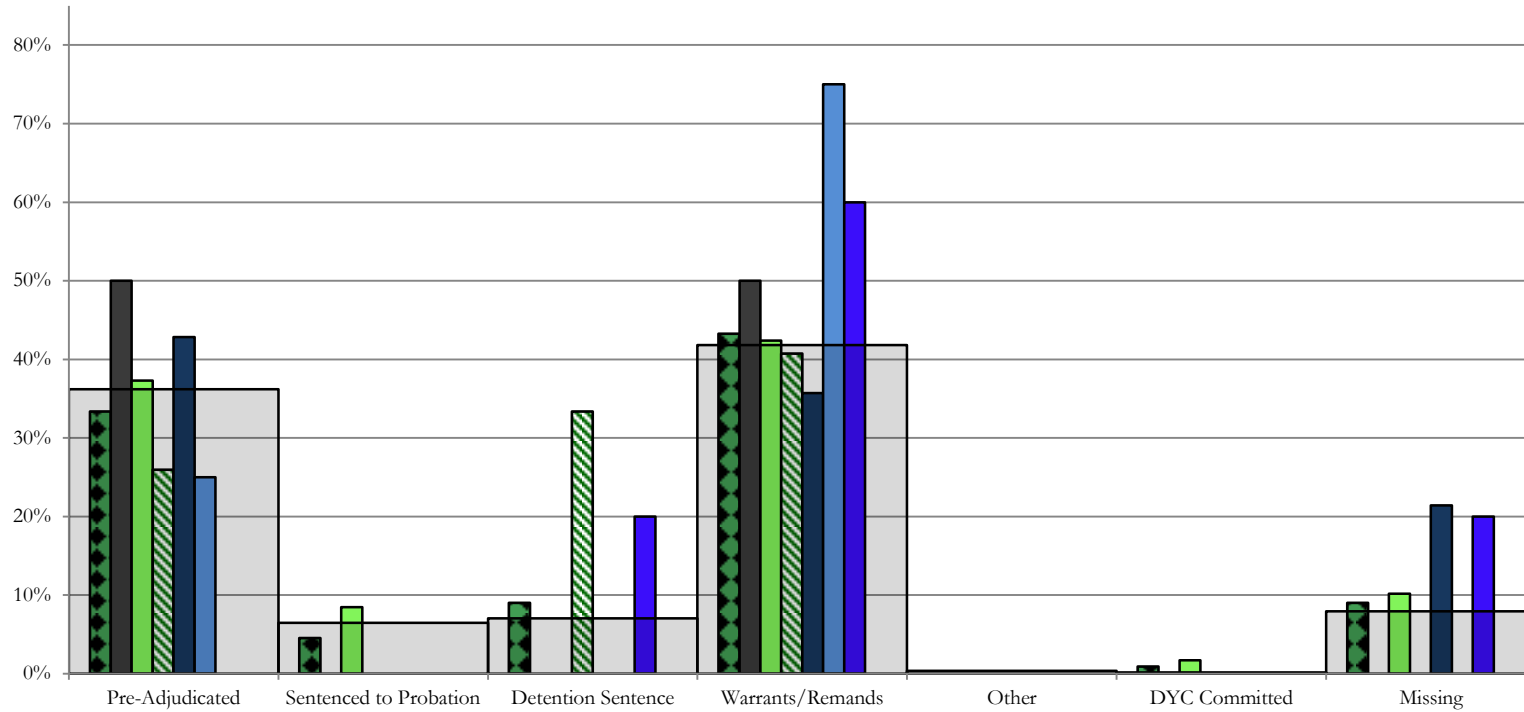
■ 20th JD, 27 New Admits

■ STATEWIDE, 555 New Admits

Southern Region

SB94 Reason Detained by Judicial District

July 2014 New Admits

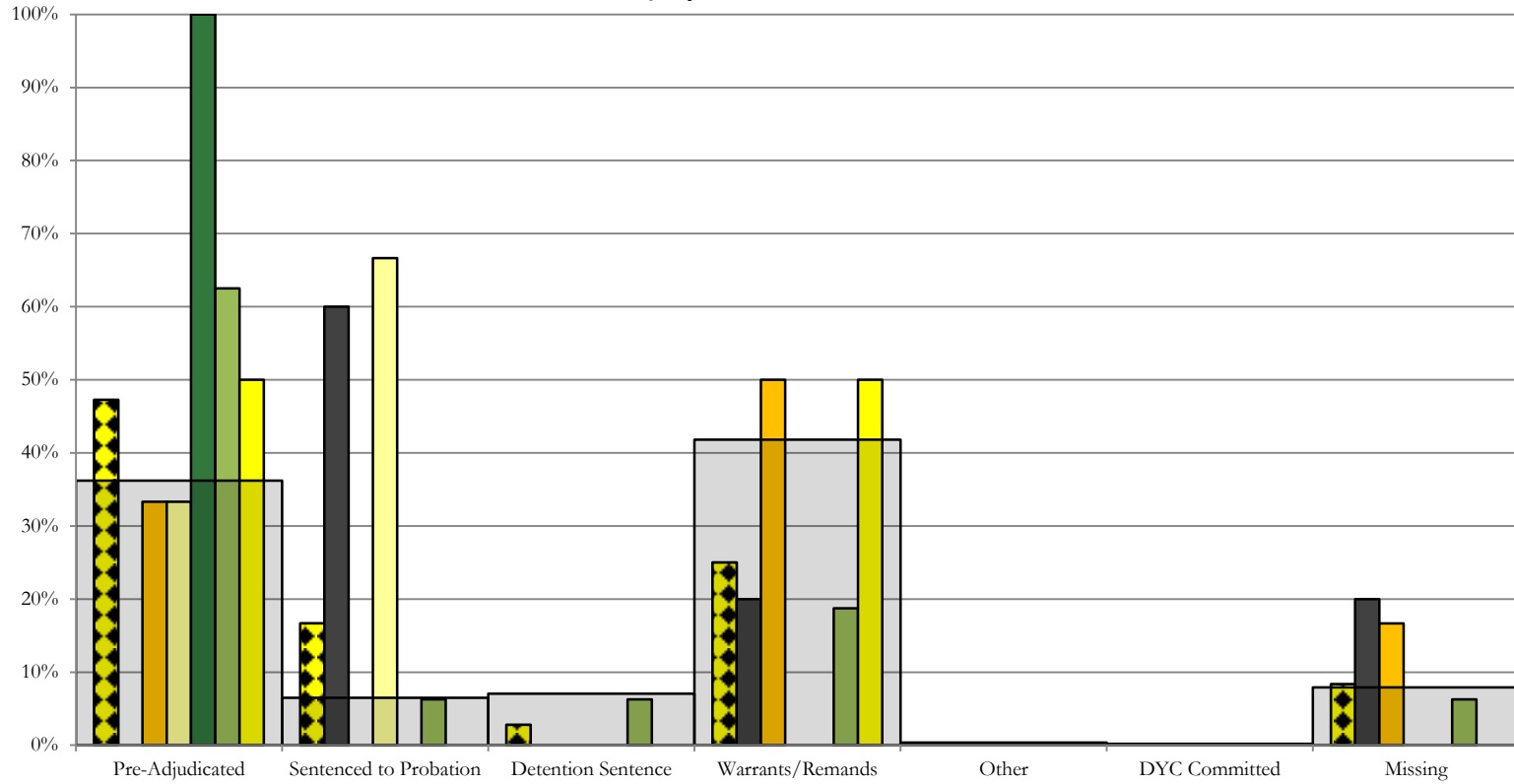


- SOUTHERN REGION, 111 New Admits
- 4th JD, 59 New Admits
- 11th JD, 14 New Admits
- 15th JD, 5 New Admits
- STATEWIDE, 555 New Admits
- 3rd JD, 2 New Admits
- 10th JD, 27 New Admits
- 12th JD, 4 New Admits
- 16th JD, 0 New Admits

Western Region

SB94 Reason Detained by Judicial District

July 2014 New Admits



■ WESTERN REGION, 36 New Admits

■ 7th JD, 6 New Admits

■ 14th JD, 2 New Admits

■ 22nd JD, 4 New Admits

■ 6th JD, 5 New Admits

■ 9th JD, 3 New Admits

■ 21st JD, 16 New Admits

■ STATEWIDE, 555 New Admits

July 2014 SB94 Supplemental Report

DYC Detention Maximum Youth Served by Judicial District¹

Region	JD	Detention Capacity	Detention ADP		Maximum Youth Served on a Single Day ^{2,3}			
			July 2014	YTD	July 2014		YTD	
					Number of Youth	% of Detention Capacity	Number of Youth	% of Detention Capacity
<i>Central Region</i>								
	1st	37	27.1	27.1	32	86.5%	32	86.5%
	2nd	64	48.7	48.7	56	87.5%	56	87.5%
	5th	4	4.4	4.4	5	125.0%	5	125.0%
	18th	61	48.9	48.9	56	91.8%	56	91.8%
Central Region		166	129.1	129.1	154	92.8%	154	92.8%
<i>Northeast Region</i>								
	8th	21	18.4	18.4	26	123.8%	26	123.8%
	13th	5	0.7	0.7	2	40.0%	2	40.0%
	17th	30	23.0	23.0	28	93.3%	28	93.3%
	19th	25	27.8	27.8	33	132.0%	33	132.0%
	20th	13	4.3	4.3	8	61.5%	8	61.5%
Northeast Region		94	74.3	74.3	93	98.9%	93	98.9%
<i>Southern Region</i>								
	3rd	2	1.1	1.1	2	100.0%	2	100.0%
	4th	51	28.3	28.3	36	70.6%	36	70.6%
	10th	13	12.9	12.9	18	138.5%	18	138.5%
	11th	8	2.9	2.9	6	75.0%	6	75.0%
	12th	4	0.9	0.9	3	75.0%	3	75.0%
	15th	2	2.6	2.6	4	200.0%	4	200.0%
	16th	3	1.8	1.8	2	66.7%	2	66.7%
Southern Region		83	50.5	50.5	70	84.3%	78	94.0%
<i>Western Region</i>								
	6th	5	1.2	1.2	4	80.0%	4	80.0%
	7th	7	2.4	2.4	5	71.4%	5	71.4%
	9th	6	0.5	0.5	3	50.0%	3	50.0%
	14th	3	1.3	1.3	3	100.0%	3	100.0%
	21st	14	11.2	11.2	15	107.1%	15	107.1%
	22nd	4	1.4	1.4	3	75.0%	3	75.0%
Western Region		39	18.0	18.0	19	48.7%	34	87.2%
<i>Missing JD or Multiple JDs</i>			0.6	0.6				
Statewide		382	272.4	272.4	321	84.0%	322	84.3%

¹ Maximum youth served is the highest number of youth in detention on a single day during the month or fiscal year.

² Regional figures are not the sum of judicial districts, but represent the maximum count on one day for the entire region.

³ State figures are not the sum of regional figures, but represent the maximum count on one day for the entire state.

July 2014

SB94 Supplemental Report

SB94 Community ADP by Judicial District

Region	JD	Pre-Adjudicated		Sentenced		Total Pre-Adjudicated and Sentenced	
		July 2014	YTD	July 2014	YTD	July 2014	YTD
<i>Central Region</i>							
	1st	129.2	129.2	29.9	29.9	159.1	159.1
	2nd	93.9	93.9	56.1	56.1	150.0	150.0
	5th	15.1	15.1	35.9	35.9	51.0	51.0
	18th	334.1	334.1	54.7	54.7	388.8	388.8
Central Total		572.2	572.2	176.6	176.6	748.8	748.8
<i>Northeast Region</i>							
	8th	39.7	39.7	20.3	20.3	60.0	60.0
	13th	35.1	35.1	18.5	18.5	53.6	53.6
	17th	71.4	71.4	73.8	73.8	145.2	145.2
	19th	46.5	46.5	32.6	32.6	79.1	79.1
	20th	33.7	33.7	27.4	27.4	61.0	61.0
Northeast Total		226.4	226.4	172.5	172.5	398.9	398.9
<i>Southern Region</i>							
	3rd	3.2	3.2	2.1	2.1	5.3	5.3
	4th	87.4	87.4	36.6	36.6	124.1	124.1
	10th	29.3	29.3	23.4	23.4	52.7	52.7
	11th	12.7	12.7	30.2	30.2	42.9	42.9
	12th	7.7	7.7	2.0	2.0	9.7	9.7
	15th	3.6	3.6	10.1	10.1	13.7	13.7
	16th	14.7	14.7	20.0	20.0	34.7	34.7
Southern Total		158.6	158.6	124.4	124.4	283.1	283.1
<i>Western Region</i>							
	6th	3.0	3.0	1.7	1.7	4.7	4.7
	7th	12.7	12.7	11.7	11.7	24.4	24.4
	9th	2.3	2.3	1.4	1.4	3.6	3.6
	14th	1.7	1.7	2.0	2.0	3.7	3.7
	21st	34.7	34.7	8.3	8.3	43.0	43.0
	22nd	4.8	4.8	0.4	0.4	5.2	5.2
Western Total		59.0	59.0	25.4	25.4	84.4	84.4
Statewide Total		1016.2	1016.2	499.0	499.0	1515.2	1515.2